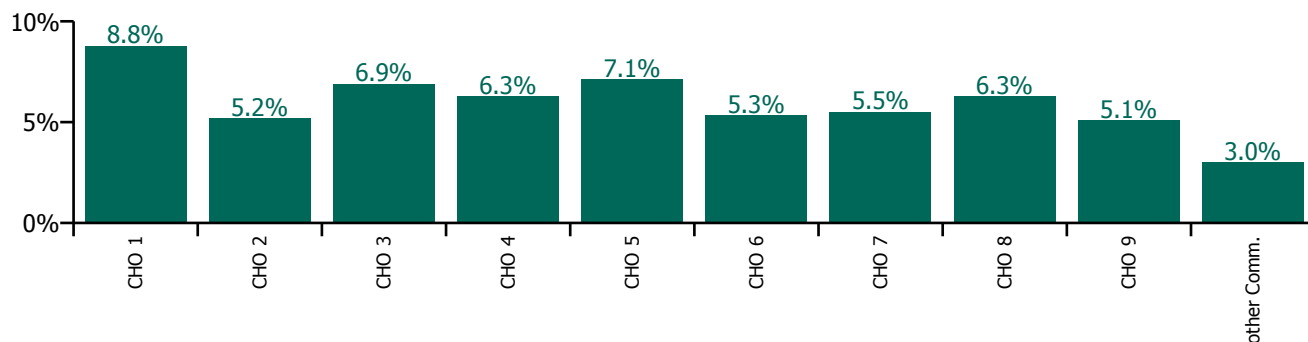


July 2023

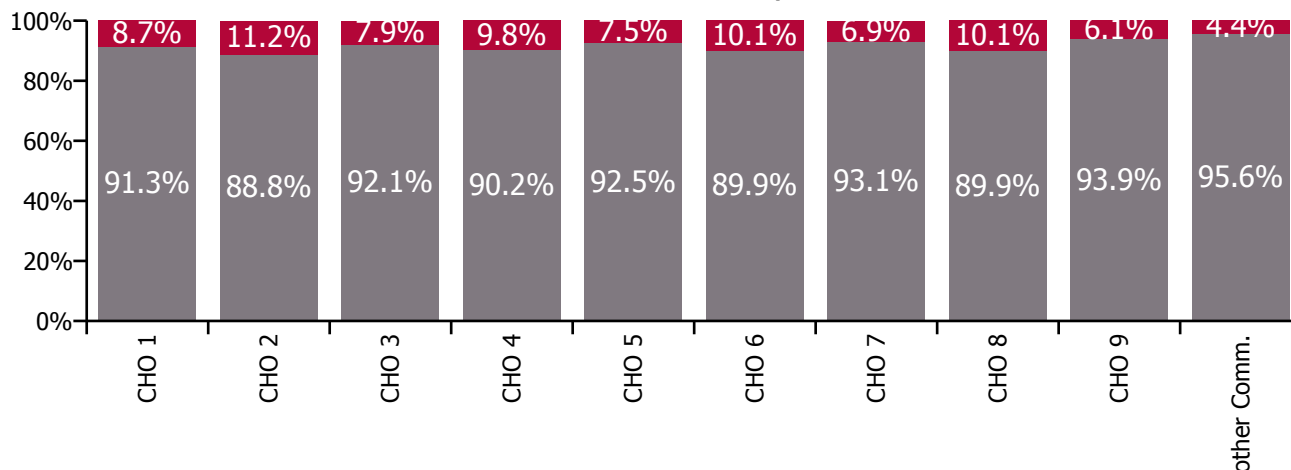
Health Service Absence Rate - by Staff Category: Jul 2023	Certified absence	Self-certified absence	Non Covid-19 absence	Covid-19 absence	Total absence rate	% Non Covid-19 absence	% Covid-19 absence
Social Care	5.1%	0.6%	5.6%	0.5%	6.2%	91.4%	8.6%
Medical & Dental	1.5%	0.4%	1.8%	0.0%	1.9%	98.2%	1.8%
Nursing & Midwifery	5.3%	0.7%	6.1%	0.7%	6.8%	89.2%	10.8%
Health & Social Care Professionals	3.7%	0.4%	4.1%	0.3%	4.4%	92.9%	7.1%
Management & Administrative	3.4%	0.3%	3.7%	0.2%	3.9%	93.6%	6.4%
General Support	6.5%	0.4%	6.9%	0.4%	7.3%	94.6%	5.4%
Patient & Client Care	5.6%	0.6%	6.2%	0.6%	6.8%	91.6%	8.4%

Health Service Absence Rate - Care Group by CHO: Jul 2023	Certified absence	Self-certified absence	Non Covid-19 absence	Covid-19 absence	Total absence rate	% Non Covid-19 absence	% Covid-19 absence
Social Care	5.1%	0.6%	5.6%	0.5%	6.2%	91.4%	8.6%
CHO 1	7.4%	0.6%	8.0%	0.8%	8.8%	91.3%	8.7%
CHO 2	4.3%	0.3%	4.6%	0.6%	5.2%	88.8%	11.2%
CHO 3	5.9%	0.5%	6.3%	0.5%	6.9%	92.1%	7.9%
CHO 4	4.9%	0.8%	5.6%	0.6%	6.3%	90.2%	9.8%
CHO 5	5.8%	0.8%	6.6%	0.5%	7.1%	92.5%	7.5%
CHO 6	4.2%	0.6%	4.8%	0.5%	5.3%	89.9%	10.1%
CHO 7	4.5%	0.6%	5.1%	0.4%	5.5%	93.1%	6.9%
CHO 8	5.1%	0.5%	5.6%	0.6%	6.3%	89.9%	10.1%
CHO 9	4.3%	0.5%	4.8%	0.3%	5.1%	93.9%	6.1%
Other Community Services	2.6%	0.2%	2.9%	0.1%	3.0%	95.6%	4.4%

Total absence rate



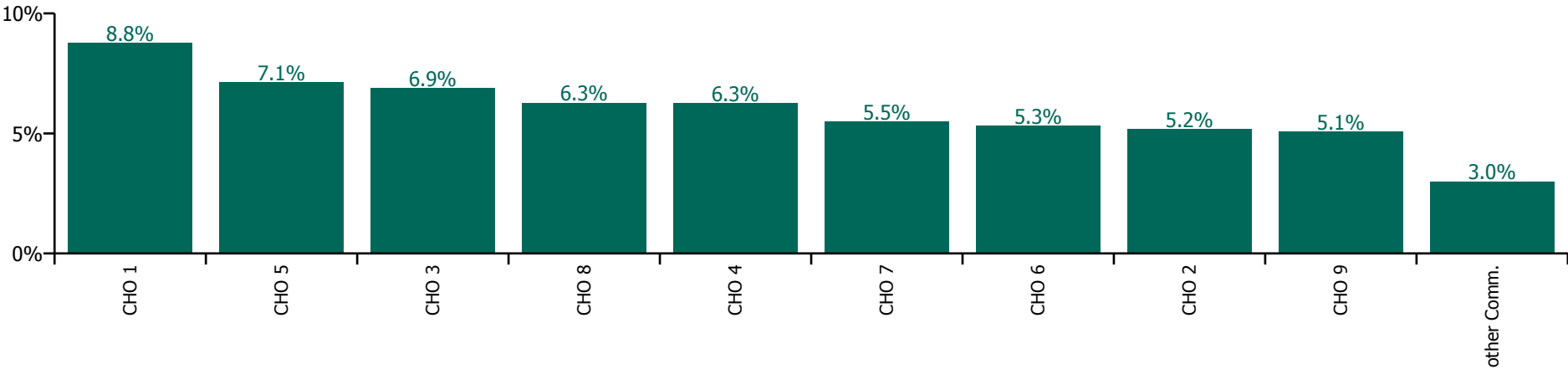
% of Absence Non Covid-19 / Covid-19



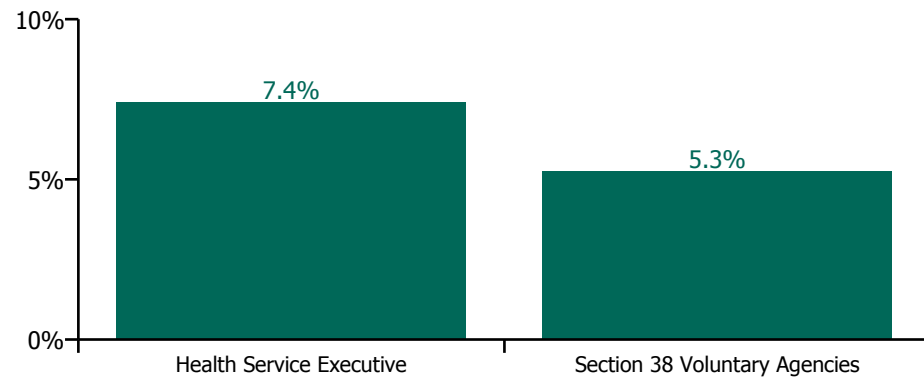
July 2023

Health Service Absence Rate - by Hospital Group & Staff Category: Jul 2023	Medical & Dental	Nursing & Midwifery	Health & Social Care Professionals	Management & Administrative	General Support	Patient & Client Care	Certified absence	Self-certified absence	Non Covid-19 absence	Covid-19 absence	Total absence rate
Social Care	1.9%	6.8%	4.4%	3.9%	7.3%	6.8%	5.1%	0.6%	5.6%	0.5%	6.2%
CHO 1	0.0%	9.0%	4.7%	5.7%	12.8%	9.0%	7.4%	0.6%	8.0%	0.8%	8.8%
CHO 2	0.0%	6.9%	3.9%	3.4%	4.9%	5.2%	4.3%	0.3%	4.6%	0.6%	5.2%
CHO 3	9.8%	8.6%	4.1%	4.8%	8.6%	6.9%	5.9%	0.5%	6.3%	0.5%	6.9%
CHO 4	0.0%	6.1%	5.1%	3.8%	6.0%	7.0%	4.9%	0.8%	5.6%	0.6%	6.3%
CHO 5	6.4%	8.0%	5.6%	4.2%	8.7%	7.4%	5.8%	0.8%	6.6%	0.5%	7.1%
CHO 6	0.0%	4.2%	4.4%	3.7%	7.3%	6.7%	4.2%	0.6%	4.8%	0.5%	5.3%
CHO 7	1.1%	6.8%	3.6%	3.7%	5.2%	6.0%	4.5%	0.6%	5.1%	0.4%	5.5%
CHO 8	0.0%	6.9%	5.2%	3.2%	4.9%	7.0%	5.1%	0.5%	5.6%	0.6%	6.3%
CHO 9	1.1%	4.9%	4.1%	3.6%	8.5%	6.0%	4.3%	0.5%	4.8%	0.3%	5.1%
Other Community Services		0.0%		3.1%		0.0%	2.6%	0.2%	2.9%	0.1%	3.0%

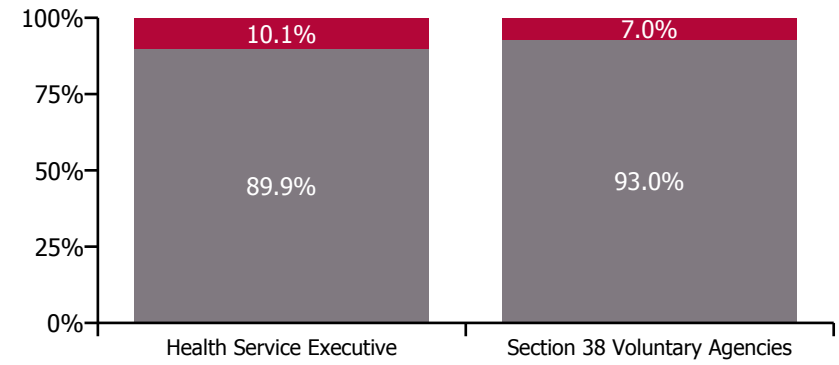
Total absence rate



Total absence rate



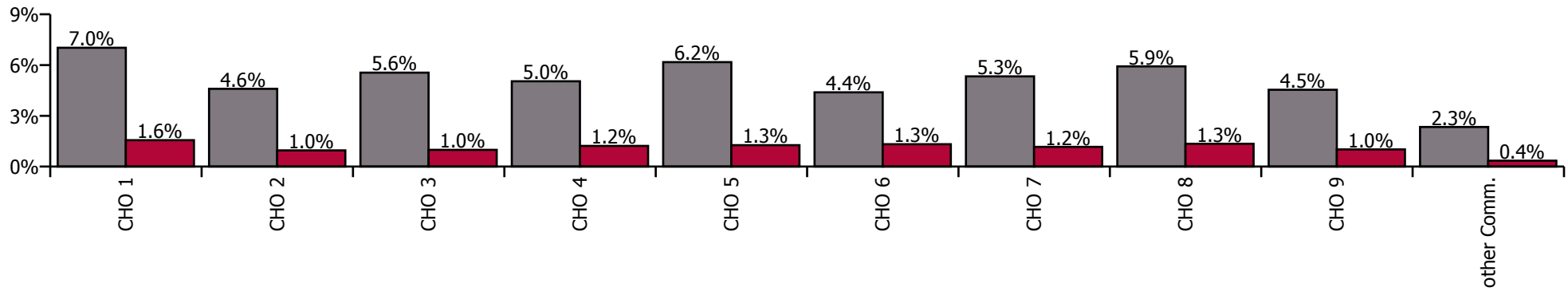
Non Covid-19 & Covid-19 Absence



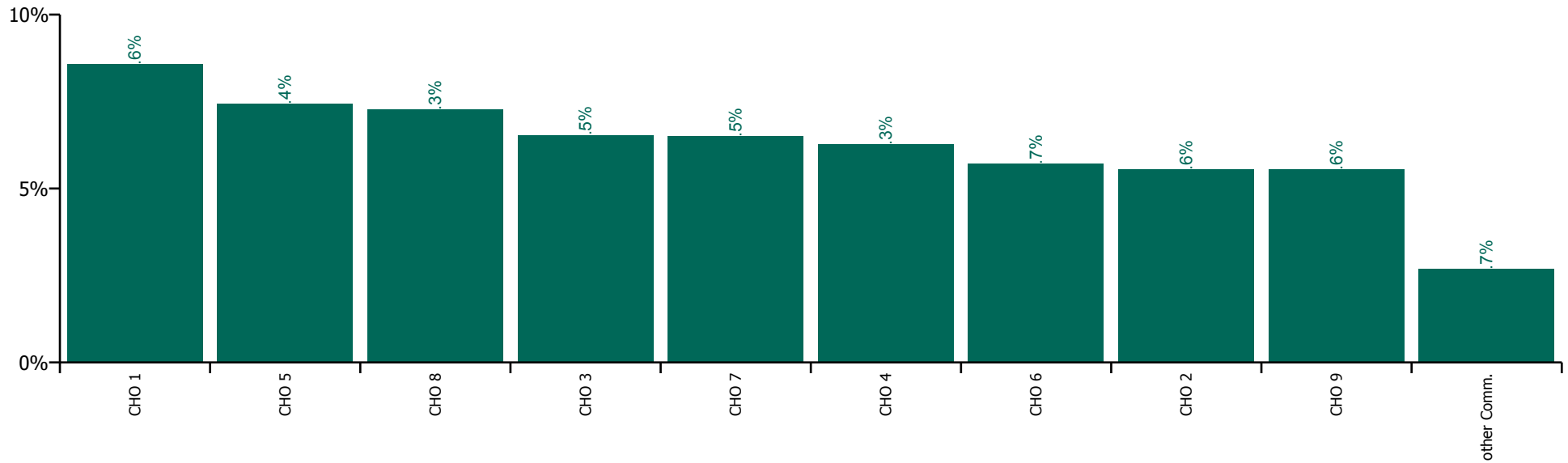
July 2023

Health Service Absence Rate by Hospital: Jul 2023	Medical & Dental	Nursing & Midwifery	Health & Social Care Professionals	Management & Administrative	General Support	Patient & Client Care	Certified absence	Self-certified absence	Non Covid-19 absence	Covid-19 absence	Total absence rate
Social Care	2.0%	7.0%	5.0%	4.1%	6.9%	7.2%	4.8%	0.5%	5.3%	1.2%	6.5%
Health Service Executive	0.4%	8.8%	4.9%	5.0%	8.9%	9.3%	6.6%	0.4%	7.0%	1.6%	8.6%
CHO 1	0.4%	8.8%	4.9%	5.0%	8.9%	9.3%	6.6%	0.4%	7.0%	1.6%	8.6%
Health Service Executive	1.0%	5.9%	2.5%	2.9%	3.7%	5.6%	3.9%	0.2%	4.1%	1.1%	5.2%
Section 38 Voluntary Agencies	3.7%	6.1%	5.8%	3.5%	5.5%	6.2%	4.6%	0.4%	5.0%	0.9%	5.9%
CHO 2	2.0%	6.0%	5.3%	3.2%	4.5%	5.9%	4.3%	0.3%	4.6%	1.0%	5.6%
Health Service Executive	4.1%	10.2%	5.0%	5.7%	11.1%	10.6%	7.7%	0.6%	8.3%	1.1%	9.4%
Section 38 Voluntary Agencies	1.5%	5.8%	5.0%	3.3%	5.0%	5.4%	4.1%	0.3%	4.4%	0.9%	5.3%
CHO 3	3.8%	7.5%	5.0%	4.7%	8.1%	6.6%	5.2%	0.4%	5.6%	1.0%	6.5%
Health Service Executive	0.6%	6.1%	4.0%	3.0%	5.9%	7.1%	4.2%	0.5%	4.7%	1.5%	6.1%
Section 38 Voluntary Agencies	0.0%	7.3%	5.4%	3.2%	6.0%	6.7%	4.4%	1.0%	5.3%	1.0%	6.4%
CHO 4	0.6%	6.6%	5.2%	3.1%	6.0%	6.9%	4.3%	0.8%	5.0%	1.2%	6.3%
Health Service Executive	1.3%	8.4%	5.5%	6.0%	8.2%	8.9%	6.1%	0.6%	6.7%	1.4%	8.0%
Section 38 Voluntary Agencies	10.1%	7.7%	7.5%	5.0%	7.2%	6.7%	5.1%	0.6%	5.7%	1.2%	6.9%
CHO 5	2.2%	8.2%	6.6%	5.5%	8.0%	7.5%	5.6%	0.6%	6.2%	1.3%	7.4%
Health Service Executive	0.8%	7.3%	6.0%	5.7%	8.3%	9.9%	5.2%	0.6%	5.9%	2.3%	8.2%
Section 38 Voluntary Agencies	1.7%	5.7%	4.6%	2.9%	5.5%	5.7%	3.5%	0.5%	4.0%	1.1%	5.1%
CHO 6	1.3%	6.2%	4.7%	3.4%	6.2%	6.7%	3.8%	0.6%	4.4%	1.3%	5.7%
Health Service Executive	1.0%	8.8%	4.7%	6.6%	10.5%	11.1%	6.5%	0.8%	7.3%	2.1%	9.3%
Section 38 Voluntary Agencies	2.0%	6.2%	4.6%	3.6%	5.9%	6.5%	4.4%	0.5%	4.9%	1.0%	5.9%
CHO 7	1.9%	7.0%	4.6%	4.3%	7.2%	7.2%	4.8%	0.5%	5.3%	1.2%	6.5%
Health Service Executive	0.2%	9.5%	5.8%	5.9%	8.0%	11.4%	7.4%	0.6%	8.0%	1.7%	9.7%
Section 38 Voluntary Agencies	0.5%	5.4%	5.4%	3.0%	5.4%	5.5%	3.9%	0.4%	4.3%	1.0%	5.3%
CHO 8	0.2%	7.6%	5.5%	4.8%	6.6%	8.2%	5.5%	0.5%	5.9%	1.3%	7.3%
Health Service Executive	2.6%	7.8%	4.1%	4.3%	8.6%	8.5%	5.2%	0.7%	5.9%	1.5%	7.3%
Section 38 Voluntary Agencies	3.3%	4.8%	4.7%	3.4%	5.8%	6.0%	3.8%	0.3%	4.2%	0.9%	5.0%
CHO 9	3.1%	5.8%	4.6%	3.6%	6.5%	6.6%	4.1%	0.4%	4.5%	1.0%	5.6%
Other Community Services		3.1%	0.4%	2.7%		1.1%	2.1%	0.2%	2.3%	0.4%	2.7%

Non Covid-19 / Covid-19 absence rates



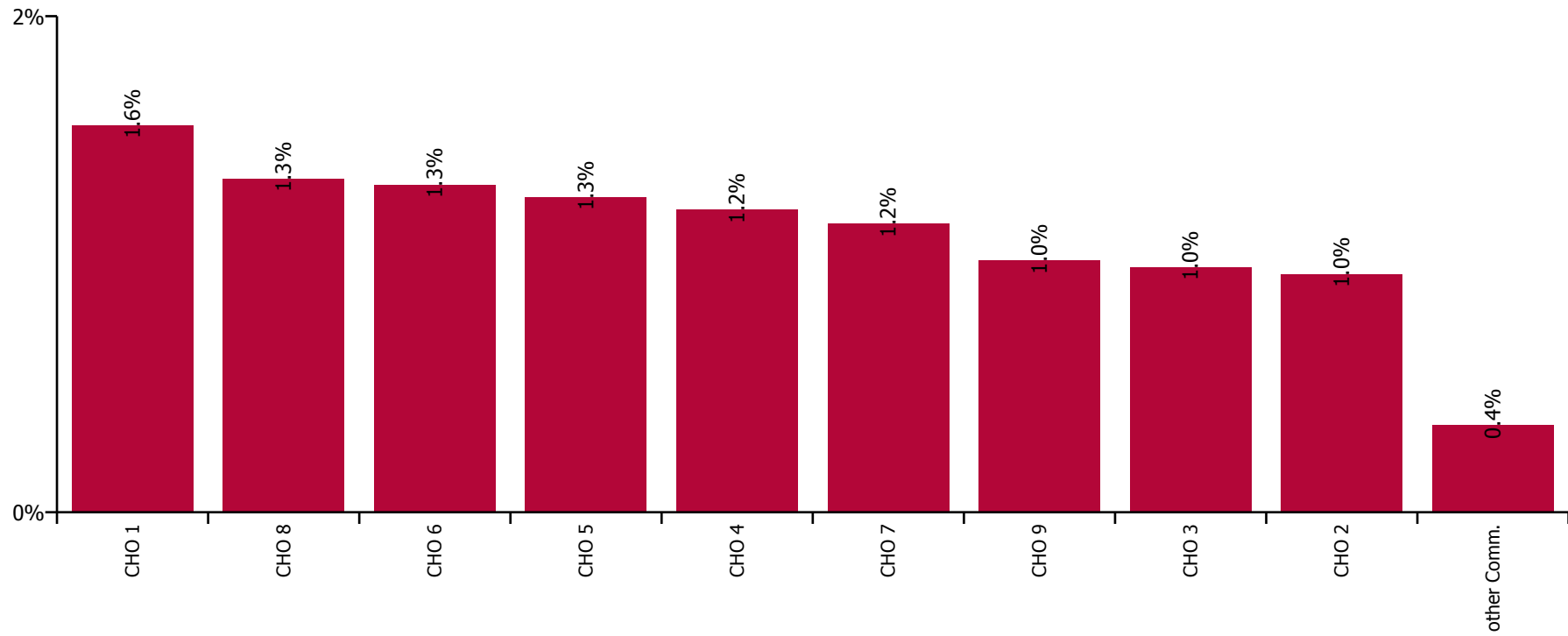
Total absence rate



July 2023

Health Service Covid-19 Absence Rate - by Staff Category & Hospital: Jul 2023	Medical & Dental	Nursing & Midwifery	Health & Social Care Professionals	Management & Administrative	General Support	Patient & Client Care	Covid-19 absence	Non Covid-19 absence	Total absence rate
Social Care	0.4%	1.5%	0.9%	4.1%	1.1%	1.3%	1.2%	5.3%	6.5%
Health Service Executive	0.0%	1.6%	0.7%	5.0%	1.2%	1.8%	1.6%	7.0%	8.6%
CHO 1	0.0%	1.6%	0.7%	5.0%	1.2%	1.8%	1.6%	7.0%	8.6%
Health Service Executive	0.0%	1.5%	0.4%	2.9%	0.5%	1.0%	1.1%	4.1%	5.2%
Section 38 Voluntary Agencies	0.0%	0.9%	0.9%	3.5%	0.6%	1.0%	0.9%	5.0%	5.9%
CHO 2	0.0%	1.3%	0.8%	3.2%	0.5%	1.0%	1.0%	4.6%	5.6%
Health Service Executive	0.1%	1.3%	0.6%	5.7%	1.2%	1.1%	1.1%	8.3%	9.4%
Section 38 Voluntary Agencies	0.3%	1.1%	0.8%	3.3%	0.9%	0.9%	0.9%	4.4%	5.3%
CHO 3	0.1%	1.2%	0.7%	4.7%	1.1%	1.0%	1.0%	5.6%	6.5%
Health Service Executive	0.1%	1.6%	0.8%	3.0%	1.2%	1.7%	1.5%	4.7%	6.1%
Section 38 Voluntary Agencies	0.0%	1.3%	0.8%	3.2%	1.3%	1.1%	1.0%	5.3%	6.4%
CHO 4	0.1%	1.5%	0.8%	3.1%	1.3%	1.3%	1.2%	5.0%	6.3%
Health Service Executive	0.0%	1.8%	0.8%	6.0%	1.4%	1.3%	1.4%	6.7%	8.0%
Section 38 Voluntary Agencies	0.3%	1.2%	1.6%	5.0%	0.7%	1.1%	1.2%	5.7%	6.9%
CHO 5	0.0%	1.6%	1.3%	5.5%	1.2%	1.2%	1.3%	6.2%	7.4%
Health Service Executive	0.2%	2.6%	3.2%	5.7%	1.0%	2.6%	2.3%	5.9%	8.2%
Section 38 Voluntary Agencies	0.3%	1.5%	1.0%	2.9%	1.1%	1.1%	1.1%	4.0%	5.1%
CHO 6	0.2%	1.9%	1.1%	3.4%	1.1%	1.5%	1.3%	4.4%	5.7%
Health Service Executive	0.3%	2.6%	0.8%	6.6%	2.1%	2.1%	2.1%	7.3%	9.3%
Section 38 Voluntary Agencies	0.8%	1.1%	0.9%	3.6%	0.8%	1.0%	1.0%	4.9%	5.9%
CHO 7	0.7%	1.5%	0.9%	4.3%	1.1%	1.2%	1.2%	5.3%	6.5%
Health Service Executive	0.1%	1.8%	0.8%	5.9%	1.7%	2.1%	1.7%	8.0%	9.7%
Section 38 Voluntary Agencies	0.4%	1.3%	0.9%	3.0%	0.6%	1.1%	1.0%	4.3%	5.3%
CHO 8	0.2%	1.6%	0.9%	4.8%	1.1%	1.5%	1.3%	5.9%	7.3%
Health Service Executive	0.9%	1.9%	0.9%	4.3%	1.7%	1.4%	1.5%	5.9%	7.3%
Section 38 Voluntary Agencies	0.6%	1.0%	0.9%	3.4%	0.9%	1.0%	0.9%	4.2%	5.0%
CHO 9	0.7%	1.3%	0.9%	3.6%	1.1%	1.1%	1.0%	4.5%	5.6%
Other Community Services		0.0%	0.0%	2.7%		0.0%	0.4%	2.3%	2.7%

Covid-19 absence rate



July 2023

Health Service Absence Rate - by Staff Category: Jul 2023	Certified absence	Self-certified absence	Non Covid-19 absence	Covid-19 absence	Total absence rate	% Non Covid-19 absence	% Covid-19 absence
HSE Social Care CHO 1	7.4%	0.6%	8.0%	0.8%	8.8%	91.3%	8.7%
Medical & Dental	0.0%	0.0%	0.0%	0.0%	0.0%		
Nursing & Midwifery	7.7%	0.6%	8.3%	0.7%	9.0%	92.0%	8.0%
Health & Social Care Professionals	4.3%	0.3%	4.7%	0.0%	4.7%	100.0%	0.0%
Management & Administrative	4.6%	0.2%	4.8%	0.9%	5.7%	84.7%	15.3%
General Support	11.6%	0.4%	12.0%	0.8%	12.8%	93.9%	6.1%
Patient & Client Care	7.5%	0.6%	8.2%	0.8%	9.0%	90.7%	9.3%

July 2023

Health Service Absence Rate - by Staff Category: Jul 2023	Certified absence	Self-certified absence	Non Covid-19 absence	Covid-19 absence	Total absence rate	% Non Covid-19 absence	% Covid-19 absence
HSE Social Care CHO 2	4.3%	0.3%	4.6%	0.6%	5.2%	88.8%	11.2%
Medical & Dental	0.0%	0.0%	0.0%	0.0%	0.0%		
Nursing & Midwifery	5.3%	0.2%	5.6%	1.3%	6.9%	81.6%	18.4%
Health & Social Care Professionals	3.4%	0.4%	3.8%	0.1%	3.9%	97.0%	3.0%
Management & Administrative	3.1%	0.1%	3.3%	0.1%	3.4%	95.7%	4.3%
General Support	3.4%	0.4%	3.8%	1.1%	4.9%	77.9%	22.1%
Patient & Client Care	4.4%	0.3%	4.7%	0.5%	5.2%	91.2%	8.8%

July 2023

Health Service Absence Rate - by Staff Category: Jul 2023	Certified absence	Self-certified absence	Non Covid-19 absence	Covid-19 absence	Total absence rate	% Non Covid-19 absence	% Covid-19 absence
HSE Social Care CHO 3	5.9%	0.5%	6.3%	0.5%	6.9%	92.1%	7.9%
Medical & Dental	9.8%	0.0%	9.8%	0.0%	9.8%	100.0%	0.0%
Nursing & Midwifery	6.8%	0.7%	7.6%	1.0%	8.6%	88.0%	12.0%
Health & Social Care Professionals	3.6%	0.3%	3.9%	0.2%	4.1%	95.5%	4.5%
Management & Administrative	4.1%	0.2%	4.2%	0.6%	4.8%	88.3%	11.7%
General Support	8.4%	0.3%	8.6%	0.0%	8.6%	100.0%	0.0%
Patient & Client Care	6.0%	0.5%	6.5%	0.5%	6.9%	93.3%	6.7%

July 2023

Health Service Absence Rate - by Staff Category: Jul 2023	Certified absence	Self-certified absence	Non Covid-19 absence	Covid-19 absence	Total absence rate	% Non Covid-19 absence	% Covid-19 absence
HSE Social Care CHO 4	4.9%	0.8%	5.6%	0.6%	6.3%	90.2%	9.8%
Medical & Dental	0.0%	0.0%	0.0%	0.0%	0.0%		
Nursing & Midwifery	4.3%	1.0%	5.3%	0.8%	6.1%	87.1%	12.9%
Health & Social Care Professionals	4.4%	0.6%	5.0%	0.1%	5.1%	98.4%	1.6%
Management & Administrative	3.4%	0.2%	3.6%	0.2%	3.8%	94.2%	5.8%
General Support	4.7%	0.5%	5.1%	0.8%	6.0%	86.5%	13.5%
Patient & Client Care	5.5%	0.8%	6.3%	0.7%	7.0%	90.1%	9.9%

July 2023

Health Service Absence Rate - by Staff Category: Jul 2023	Certified absence	Self- certified absence	Non Covid-19 absence	Covid-19 absence	Total absence rate	% Non Covid-19 absence	% Covid-19 absence
HSE Social Care CHO 5	5.8%	0.8%	6.6%	0.5%	7.1%	92.5%	7.5%
Medical & Dental	6.4%	0.0%	6.4%	0.0%	6.4%	100.0%	0.0%
Nursing & Midwifery	6.4%	0.6%	7.1%	0.9%	8.0%	88.3%	11.7%
Health & Social Care Professionals	4.1%	0.6%	4.8%	0.8%	5.6%	85.1%	14.9%
Management & Administrative	3.5%	0.5%	4.0%	0.2%	4.2%	96.0%	4.0%
General Support	7.0%	0.5%	7.5%	1.2%	8.7%	86.2%	13.8%
Patient & Client Care	6.1%	1.0%	7.1%	0.3%	7.4%	95.7%	4.3%

July 2023

Health Service Absence Rate - by Staff Category: Jul 2023	Certified absence	Self- certified absence	Non Covid-19 absence	Covid-19 absence	Total absence rate	% Non Covid-19 absence	% Covid-19 absence
HSE Social Care CHO 6	4.2%	0.6%	4.8%	0.5%	5.3%	89.9%	10.1%
Medical & Dental	0.0%	0.0%	0.0%	0.0%	0.0%		
Nursing & Midwifery	2.9%	0.7%	3.7%	0.6%	4.2%	86.4%	13.6%
Health & Social Care Professionals	3.5%	0.5%	4.0%	0.3%	4.4%	92.2%	7.8%
Management & Administrative	3.3%	0.3%	3.6%	0.1%	3.7%	96.4%	3.6%
General Support	6.8%	0.6%	7.3%	0.0%	7.3%	100.0%	0.0%
Patient & Client Care	5.1%	0.7%	5.8%	0.9%	6.7%	86.9%	13.1%

July 2023

Health Service Absence Rate - by Staff Category: Jul 2023	Certified absence	Self- certified absence	Non Covid-19 absence	Covid-19 absence	Total absence rate	% Non Covid-19 absence	% Covid-19 absence
HSE Social Care CHO 7	4.5%	0.6%	5.1%	0.4%	5.5%	93.1%	6.9%
Medical & Dental	0.0%	1.1%	1.1%	0.0%	1.1%	100.0%	0.0%
Nursing & Midwifery	5.3%	0.9%	6.1%	0.6%	6.8%	90.5%	9.5%
Health & Social Care Professionals	3.0%	0.4%	3.4%	0.2%	3.6%	94.7%	5.3%
Management & Administrative	3.1%	0.3%	3.4%	0.3%	3.7%	91.2%	8.8%
General Support	4.8%	0.4%	5.2%	0.0%	5.2%	99.1%	0.9%
Patient & Client Care	4.9%	0.6%	5.6%	0.4%	6.0%	93.3%	6.7%

July 2023

Health Service Absence Rate - by Staff Category: Jul 2023	Certified absence	Self- certified absence	Non Covid-19 absence	Covid-19 absence	Total absence rate	% Non Covid-19 absence	% Covid-19 absence
HSE Social Care CHO 8	5.1%	0.5%	5.6%	0.6%	6.3%	89.9%	10.1%
Medical & Dental	0.0%	0.0%	0.0%	0.0%	0.0%		
Nursing & Midwifery	5.3%	0.9%	6.3%	0.6%	6.9%	91.0%	9.0%
Health & Social Care Professionals	4.2%	0.3%	4.4%	0.7%	5.2%	85.9%	14.1%
Management & Administrative	2.9%	0.2%	3.1%	0.1%	3.2%	97.4%	2.6%
General Support	4.6%	0.3%	4.9%	0.0%	4.9%	100.0%	0.0%
Patient & Client Care	5.8%	0.5%	6.3%	0.7%	7.0%	89.6%	10.4%

July 2023

Health Service Absence Rate - by Staff Category: Jul 2023	Certified absence	Self-certified absence	Non Covid-19 absence	Covid-19 absence	Total absence rate	% Non Covid-19 absence	% Covid-19 absence
HSE Social Care CHO 9	4.3%	0.5%	4.8%	0.3%	5.1%	93.9%	6.1%
Medical & Dental	0.0%	1.0%	1.0%	0.1%	1.1%	87.5%	12.5%
Nursing & Midwifery	4.0%	0.6%	4.6%	0.4%	4.9%	92.8%	7.2%
Health & Social Care Professionals	3.5%	0.4%	3.9%	0.2%	4.1%	94.2%	5.8%
Management & Administrative	3.2%	0.4%	3.6%	0.0%	3.6%	98.8%	1.2%
General Support	7.7%	0.6%	8.3%	0.2%	8.5%	97.2%	2.8%
Patient & Client Care	5.0%	0.6%	5.6%	0.5%	6.0%	92.5%	7.5%

July 2023

Health Service Absence Rate - by Staff Category: Jul 2023	Certified absence	Self-certified absence	Non Covid-19 absence	Covid-19 absence	Total absence rate	% Non Covid-19 absence	% Covid-19 absence
HSE Social Care Other Community Services	2.6%	0.2%	2.9%	0.1%	3.0%	95.6%	4.4%
Medical & Dental							
Nursing & Midwifery	0.0%	0.0%	0.0%	0.0%	0.0%		#DIV/0
Health & Social Care Professionals							
Management & Administrative	2.7%	0.3%	3.0%	0.1%	3.1%	95.6%	4.4%
General Support							
Patient & Client Care	0.0%	0.0%	0.0%	0.0%	0.0%		#DIV/0

July 2023

Aurora absence by Staff Category	Certified absence	Self-certified absence	Non Covid-19 absence	Covid-19 absence	Total absence rate	% Non Covid-19 absence	% Covid-19 absence
Aurora (CHO 5)	8.7%	1.6%	10.3%	0.1%	10.5%	98.7%	1.3%
Medical & Dental							
Nursing & Midwifery	21.2%	0.4%	21.6%	0.0%	21.6%	100.0%	0.0%
Health & Social Care Professionals	2.8%	2.2%	5.0%	0.0%	5.0%	100.0%	0.0%
Management & Administrative	2.1%	0.8%	2.9%	0.0%	2.9%	100.0%	0.0%
General Support	15.4%	0.4%	15.8%	0.0%	15.8%	100.0%	0.0%
Patient & Client Care	8.4%	1.9%	10.3%	0.2%	10.5%	98.0%	2.0%

July 2023

Avista Dublin absence by Staff Category	Certified absence	Self-certified absence	Non Covid-19 absence	Covid-19 absence	Total absence rate	% Non Covid-19 absence	% Covid-19 absence
Avista Dublin (CHO 9)	4.2%	0.6%	4.7%	0.8%	5.6%	85.4%	14.6%
Medical & Dental							
Nursing & Midwifery	4.9%	0.5%	5.3%	0.8%	6.1%	87.5%	12.5%
Health & Social Care Professionals	2.8%	0.6%	3.4%	0.7%	4.1%	83.6%	16.4%
Management & Administrative	4.4%	0.3%	4.7%	0.0%	4.7%	100.0%	0.0%
General Support	2.2%	0.4%	2.6%	0.2%	2.8%	92.7%	7.3%
Patient & Client Care	5.0%	0.7%	5.8%	1.3%	7.0%	81.9%	18.1%

July 2023

Avista Limerick absence by Staff Category	Certified absence	Self-certified absence	Non Covid-19 absence	Covid-19 absence	Total absence rate	% Non Covid-19 absence	% Covid-19 absence
Avista Limerick (CHO 3)	4.6%	0.2%	4.8%	0.6%	5.4%	89.6%	10.4%
Medical & Dental							
Nursing & Midwifery	6.3%	0.2%	6.5%	0.7%	7.2%	90.6%	9.4%
Health & Social Care Professionals	2.1%	0.2%	2.4%	0.0%	2.4%	100.0%	0.0%
Management & Administrative	0.8%	0.3%	1.1%	0.7%	1.8%	62.3%	37.7%
General Support	9.2%	0.2%	9.4%	0.0%	9.4%	100.0%	0.0%
Patient & Client Care	3.3%	0.1%	3.4%	0.8%	4.3%	80.3%	19.7%

July 2023

Avista Roscrea absence by Staff Category	Certified absence	Self-certified absence	Non Covid-19 absence	Covid-19 absence	Total absence rate	% Non Covid-19 absence	% Covid-19 absence
Avista Roscrea (CHO 3)	3.8%	0.3%	4.1%	0.4%	4.5%	92.1%	7.9%
Medical & Dental							
Nursing & Midwifery	2.8%	0.4%	3.2%	0.0%	3.2%	100.0%	0.0%
Health & Social Care Professionals	4.4%	0.0%	4.4%	0.0%	4.4%	100.0%	0.0%
Management & Administrative	0.0%	0.0%	0.0%	0.0%	0.0%		#DIV/0
General Support	0.6%	0.5%	1.1%	0.0%	1.1%	100.0%	0.0%
Patient & Client Care	4.5%	0.4%	4.9%	0.5%	5.5%	90.1%	9.9%

July 2023

Bros. of Charity, Clare absence by Staff Category	Certified absence	Self-certified absence	Non Covid-19 absence	Covid-19 absence	Total absence rate	% Non Covid-19 absence	% Covid-19 absence
Bros. of Charity, Clare (CHO 3)	5.2%	0.4%	5.5%	0.5%	6.0%	91.9%	8.1%
Medical & Dental	0.0%	0.0%	0.0%	0.0%	0.0%		
Nursing & Midwifery	0.0%	0.0%	0.0%	7.3%	7.3%	0.0%	100.0%
Health & Social Care Professionals	5.3%	0.4%	5.7%	0.8%	6.5%	87.9%	12.1%
Management & Administrative	6.7%	0.0%	6.7%	0.0%	6.7%	100.0%	0.0%
General Support							
Patient & Client Care	5.2%	0.4%	5.5%	0.4%	5.9%	93.7%	6.3%

July 2023

Bros. of Charity, Limerick absence by Staff Category	Certified absence	Self-certified absence	Non Covid-19 absence	Covid-19 absence	Total absence rate	% Non Covid-19 absence	% Covid-19 absence
Bros. of Charity, Limerick (CHO 3)	5.5%	0.6%	6.1%	0.3%	6.4%	94.5%	5.5%
Medical & Dental							
Nursing & Midwifery	6.2%	0.8%	6.9%	1.4%	8.4%	83.0%	17.0%
Health & Social Care Professionals	2.9%	0.5%	3.4%	0.1%	3.4%	98.3%	1.7%
Management & Administrative	2.6%	0.0%	2.6%	0.0%	2.6%	100.0%	0.0%
General Support	5.5%	0.0%	5.5%	0.0%	5.5%	100.0%	0.0%
Patient & Client Care	6.4%	0.6%	7.0%	0.1%	7.0%	99.0%	1.0%

July 2023

Bros. of Charity, Southern absence by Staff Category	Certified absence	Self-certified absence	Non Covid-19 absence	Covid-19 absence	Total absence rate	% Non Covid-19 absence	% Covid-19 absence
Bros. of Charity, Southern (CHO 4)	3.9%	0.5%	4.4%	0.1%	4.4%	98.4%	1.6%
Medical & Dental							
Nursing & Midwifery	0.5%	0.8%	1.4%	0.3%	1.6%	83.9%	16.1%
Health & Social Care Professionals	5.1%	0.6%	5.6%	0.0%	5.6%	100.0%	0.0%
Management & Administrative	3.1%	0.2%	3.3%	0.0%	3.3%	100.0%	0.0%
General Support	6.2%	0.2%	6.3%	0.0%	6.3%	100.0%	0.0%
Patient & Client Care	3.9%	0.4%	4.3%	0.1%	4.4%	98.0%	2.0%

July 2023

Bros. of Charity, Waterford absence by Staff Category	Certified absence	Self-certified absence	Non Covid-19 absence	Covid-19 absence	Total absence rate	% Non Covid-19 absence	% Covid-19 absence
Bros. of Charity, Waterford (CHO 5)	5.7%	0.9%	6.5%	0.5%	7.0%	93.4%	6.6%
Medical & Dental	10.5%	0.0%	10.5%	0.0%	10.5%	100.0%	0.0%
Nursing & Midwifery	8.3%	0.6%	8.9%	0.6%	9.4%	93.9%	6.1%
Health & Social Care Professionals	6.8%	0.7%	7.4%	2.2%	9.6%	77.3%	22.7%
Management & Administrative	3.7%	0.3%	4.0%	0.0%	4.0%	100.0%	0.0%
General Support	4.6%	2.3%	7.0%	0.0%	7.0%	100.0%	0.0%
Patient & Client Care	5.3%	1.0%	6.3%	0.2%	6.4%	97.6%	2.4%

July 2023

Bros. of Charity, West Region absence by Staff Category	Certified absence	Self-certified absence	Non Covid-19 absence	Covid-19 absence	Total absence rate	% Non Covid-19 absence	% Covid-19 absence
Bros. of Charity, West Region (CHO 2)	4.7%	0.4%	5.1%	0.3%	5.4%	93.6%	6.4%
Medical & Dental	0.0%	0.0%	0.0%	0.0%	0.0%		
Nursing & Midwifery	5.9%	0.2%	6.1%	0.4%	6.5%	93.7%	6.3%
Health & Social Care Professionals	3.9%	0.4%	4.4%	0.1%	4.5%	96.9%	3.1%
Management & Administrative	2.7%	0.2%	3.0%	0.2%	3.1%	95.0%	5.0%
General Support	5.1%	0.6%	5.7%	0.8%	6.4%	88.1%	11.9%
Patient & Client Care	5.0%	0.4%	5.4%	0.4%	5.9%	92.7%	7.3%

July 2023

Carriglea Cairde Services absence by Staff Category	Certified absence	Self-certified absence	Non Covid-19 absence	Covid-19 absence	Total absence rate	% Non Covid-19 absence	% Covid-19 absence
Carriglea Cairde Services (CHO 5)	3.9%	0.3%	4.3%	0.3%	4.6%	92.5%	7.5%
Medical & Dental							
Nursing & Midwifery	3.3%	0.0%	3.3%	0.5%	3.8%	87.7%	12.3%
Health & Social Care Professionals	0.9%	0.0%	0.9%	0.3%	1.2%	78.0%	22.0%
Management & Administrative	0.0%	0.0%	0.0%	0.0%	0.0%		#DIV/0
General Support	0.0%	0.9%	0.9%	0.0%	0.9%	100.0%	0.0%
Patient & Client Care	5.1%	0.5%	5.7%	0.4%	6.0%	93.9%	6.1%

July 2023

Central Remedial Clinic absence by Staff Category	Certified absence	Self-certified absence	Non Covid-19 absence	Covid-19 absence	Total absence rate	% Non Covid-19 absence	% Covid-19 absence
Central Remedial Clinic (CHO 9)	3.7%	0.3%	4.0%	0.1%	4.1%	97.4%	2.6%
Medical & Dental	0.0%	0.0%	0.0%	0.0%	0.0%		
Nursing & Midwifery	0.0%	0.0%	0.0%	0.0%	0.0%		#DIV/0
Health & Social Care Professionals	1.9%	0.3%	2.2%	0.1%	2.3%	97.7%	2.3%
Management & Administrative	6.0%	0.0%	6.0%	0.0%	6.0%	100.0%	0.0%
General Support	16.4%	0.0%	16.4%	0.0%	16.4%	100.0%	0.0%
Patient & Client Care	4.9%	0.3%	5.2%	0.3%	5.5%	94.7%	5.3%

July 2023

Cheeverstown House absence by Staff Category	Certified absence	Self-certified absence	Non Covid-19 absence	Covid-19 absence	Total absence rate	% Non Covid-19 absence	% Covid-19 absence
Cheeverstown House (CHO 7)	5.2%	0.7%	5.9%	0.4%	6.3%	93.7%	6.3%
Medical & Dental							
Nursing & Midwifery	2.8%	0.9%	3.7%	0.1%	3.8%	98.4%	1.6%
Health & Social Care Professionals	5.9%	0.5%	6.4%	0.0%	6.4%	100.0%	0.0%
Management & Administrative	3.2%	0.5%	3.6%	0.0%	3.6%	100.0%	0.0%
General Support	7.4%	0.2%	7.6%	0.0%	7.6%	100.0%	0.0%
Patient & Client Care	6.7%	0.8%	7.5%	0.9%	8.4%	88.9%	11.1%

July 2023

Children's Sunshine Home absence by Staff Category	Certified absence	Self-certified absence	Non Covid-19 absence	Covid-19 absence	Total absence rate	% Non Covid-19 absence	% Covid-19 absence
Children's Sunshine Home (CHO 6)	7.2%	0.2%	7.3%	1.4%	8.7%	84.3%	15.7%
Medical & Dental							
Nursing & Midwifery	1.5%	0.0%	1.5%	0.0%	1.5%	100.0%	0.0%
Health & Social Care Professionals	0.0%	0.0%	0.0%	0.0%	0.0%		#DIV/0
Management & Administrative	13.1%	0.0%	13.1%	0.0%	13.1%	100.0%	0.0%
General Support	0.0%	0.0%	0.0%	0.0%	0.0%		
Patient & Client Care	15.1%	0.5%	15.7%	4.5%	20.1%	77.8%	22.2%

July 2023

Cope Foundation absence by Staff Category	Certified absence	Self-certified absence	Non Covid-19 absence	Covid-19 absence	Total absence rate	% Non Covid-19 absence	% Covid-19 absence
Cope Foundation (CHO 4)	3.5%	1.3%	4.8%	0.8%	5.6%	86.5%	13.5%
Medical & Dental							
Nursing & Midwifery	4.3%	1.6%	5.9%	0.7%	6.6%	89.0%	11.0%
Health & Social Care Professionals	1.0%	0.7%	1.7%	0.3%	2.0%	84.5%	15.5%
Management & Administrative	1.3%	0.0%	1.3%	0.3%	1.6%	80.5%	19.5%
General Support	3.6%	1.0%	4.6%	1.0%	5.6%	81.6%	18.4%
Patient & Client Care	3.7%	1.5%	5.2%	0.8%	6.1%	86.1%	13.9%

July 2023

Incorporated Orthopaedic Hospital absence by Staff Category	Certified absence	Self-certified absence	Non Covid-19 absence	Covid-19 absence	Total absence rate	% Non Covid-19 absence	% Covid-19 absence
Incorporated Orthopaedic Hospital (CHO 9)	2.3%	1.0%	3.4%	0.0%	3.4%	99.5%	0.5%
Medical & Dental	0.0%	3.6%	3.6%	0.5%	4.1%	87.5%	12.5%
Nursing & Midwifery	1.7%	0.8%	2.5%	0.0%	2.5%	100.0%	0.0%
Health & Social Care Professionals	0.3%	0.2%	0.5%	0.0%	0.5%	100.0%	0.0%
Management & Administrative	0.0%	5.2%	5.2%	0.0%	5.2%	100.0%	0.0%
General Support	6.1%	1.0%	7.0%	0.0%	7.0%	100.0%	0.0%
Patient & Client Care	3.4%	0.4%	3.8%	0.0%	3.8%	100.0%	0.0%

July 2023

Kare, Newbridge, Co Kildare absence by Staff Category	Certified absence	Self-certified absence	Non Covid-19 absence	Covid-19 absence	Total absence rate	% Non Covid-19 absence	% Covid-19 absence
Kare, Newbridge, Co Kildare (CHO 7)	4.9%	0.5%	5.4%	0.2%	5.6%	96.6%	3.4%
Medical & Dental							
Nursing & Midwifery	5.9%	0.2%	6.0%	1.1%	7.1%	85.2%	14.8%
Health & Social Care Professionals	3.5%	0.4%	3.9%	0.2%	4.1%	94.3%	5.7%
Management & Administrative	0.0%	0.4%	0.4%	0.0%	0.4%	100.0%	0.0%
General Support	0.0%	0.0%	0.0%	0.0%	0.0%		
Patient & Client Care	6.1%	0.7%	6.8%	0.1%	6.9%	98.6%	1.4%

July 2023

Leopardstown Park Hospital absence by Staff Category	Certified absence	Self-certified absence	Non Covid-19 absence	Covid-19 absence	Total absence rate	% Non Covid-19 absence	% Covid-19 absence
Leopardstown Park Hospital (CHO 6)	3.5%	1.0%	4.4%	0.4%	4.8%	92.1%	7.9%
Medical & Dental	0.0%	0.0%	0.0%	0.0%	0.0%		
Nursing & Midwifery	2.2%	1.2%	3.4%	0.5%	3.9%	87.9%	12.1%
Health & Social Care Professionals	0.4%	0.8%	1.1%	0.0%	1.1%	100.0%	0.0%
Management & Administrative	1.3%	0.0%	1.3%	0.2%	1.5%	85.1%	14.9%
General Support	3.2%	0.7%	3.9%	0.0%	3.9%	100.0%	0.0%
Patient & Client Care	5.7%	1.2%	7.0%	0.6%	7.6%	91.6%	8.4%

July 2023

Muiriosa Foundation, Laois/Offaly absence by Staff Category	Certified absence	Self-certified absence	Non Covid-19 absence	Covid-19 absence	Total absence rate	% Non Covid-19 absence	% Covid-19 absence
Muiriosa Foundation, Laois/Offaly (CHO 8)	4.7%	0.3%	5.0%	1.2%	6.2%	80.5%	19.5%
Medical & Dental							
Nursing & Midwifery	4.7%	0.3%	5.0%	3.2%	8.2%	61.1%	38.9%
Health & Social Care Professionals	4.6%	0.3%	4.9%	2.4%	7.3%	67.7%	32.3%
Management & Administrative	0.2%	0.1%	0.3%	0.0%	0.3%	100.0%	0.0%
General Support	0.0%	0.0%	0.0%	0.0%	0.0%		
Patient & Client Care	5.2%	0.3%	5.5%	0.2%	5.7%	96.1%	3.9%

July 2023

Muiriosa Foundation, Longford/Westmeath absence by Staff Category	Certified absence	Self-certified absence	Non Covid-19 absence	Covid-19 absence	Total absence rate	% Non Covid-19 absence	% Covid-19 absence
Muiriosa Foundation, Longford/Westmeath (CHO 8)	2.6%	0.2%	2.8%	0.1%	2.9%	96.8%	3.2%
Medical & Dental							
Nursing & Midwifery	2.5%	1.2%	3.7%	0.0%	3.7%	100.0%	0.0%
Health & Social Care Professionals	2.8%	0.1%	2.9%	0.2%	3.1%	94.6%	5.4%
Management & Administrative	0.0%	0.0%	0.0%	0.0%	0.0%		#DIV/0
General Support	0.0%	0.0%	0.0%	0.0%	0.0%		
Patient & Client Care	2.8%	0.3%	3.0%	0.1%	3.1%	97.8%	2.2%

July 2023

Muiriosa Foundation, South Kildare absence by Staff Category	Certified absence	Self-certified absence	Non Covid-19 absence	Covid-19 absence	Total absence rate	% Non Covid-19 absence	% Covid-19 absence
Muiriosa Foundation, South Kildare (CHO 8)	3.0%	0.3%	3.3%	0.2%	3.4%	95.2%	4.8%
Medical & Dental							
Nursing & Midwifery	1.1%	0.4%	1.5%	0.0%	1.5%	100.0%	0.0%
Health & Social Care Professionals	2.4%	0.3%	2.7%	0.0%	2.7%	100.0%	0.0%
Management & Administrative	0.0%	0.0%	0.0%	0.0%	0.0%		#DIV/0
General Support	4.1%	0.7%	4.8%	0.0%	4.8%	100.0%	0.0%
Patient & Client Care	4.4%	0.2%	4.6%	0.4%	5.0%	92.6%	7.4%

July 2023

Peamount Hospital (Newcastle) absence by Staff Category	Certified absence	Self-certified absence	Non Covid-19 absence	Covid-19 absence	Total absence rate	% Non Covid-19 absence	% Covid-19 absence
Peamount Hospital (Newcastle) (CHO 7)	3.7%	0.8%	4.4%	0.4%	4.9%	90.8%	9.2%
Medical & Dental	0.0%	1.6%	1.6%	0.0%	1.6%	100.0%	0.0%
Nursing & Midwifery	6.1%	0.9%	7.0%	1.0%	8.0%	87.9%	12.1%
Health & Social Care Professionals	2.1%	0.9%	3.0%	0.0%	3.0%	100.0%	0.0%
Management & Administrative	1.9%	0.8%	2.7%	0.1%	2.8%	96.4%	3.6%
General Support	1.7%	0.5%	2.2%	0.0%	2.2%	100.0%	0.0%
Patient & Client Care	3.5%	0.7%	4.2%	0.4%	4.6%	90.8%	9.2%

July 2023

Royal Hospital, Donnybrook, Dublin absence by Staff Category	Certified absence	Self-certified absence	Non Covid-19 absence	Covid-19 absence	Total absence rate	% Non Covid-19 absence	% Covid-19 absence
Royal Hospital, Donnybrook, Dublin (CHO 6)	4.1%	0.5%	4.6%	0.1%	4.7%	98.4%	1.6%
Medical & Dental	0.0%	0.0%	0.0%	0.0%	0.0%		
Nursing & Midwifery	3.3%	0.5%	3.8%	0.2%	4.1%	94.0%	6.0%
Health & Social Care Professionals	3.6%	0.4%	4.1%	0.0%	4.1%	100.0%	0.0%
Management & Administrative	2.8%	0.0%	2.8%	0.0%	2.8%	100.0%	0.0%
General Support	5.9%	0.8%	6.7%	0.0%	6.7%	100.0%	0.0%
Patient & Client Care	4.7%	0.5%	5.2%	0.0%	5.2%	100.0%	0.0%

July 2023

Stewart's Hospital, (Palmerstown) absence by Staff Category	Certified absence	Self-certified absence	Non Covid-19 absence	Covid-19 absence	Total absence rate	% Non Covid-19 absence	% Covid-19 absence
Stewart's Hospital, (Palmerstown) (CHO 7)	4.5%	0.6%	5.1%	0.3%	5.4%	95.0%	5.0%
Medical & Dental							
Nursing & Midwifery	6.2%	0.6%	6.8%	0.6%	7.4%	92.4%	7.6%
Health & Social Care Professionals	3.3%	0.6%	3.9%	0.5%	4.4%	89.1%	10.9%
Management & Administrative	3.2%	0.1%	3.2%	0.5%	3.7%	87.8%	12.2%
General Support	6.5%	0.4%	6.9%	0.0%	6.9%	100.0%	0.0%
Patient & Client Care	4.4%	0.6%	5.0%	0.2%	5.2%	96.2%	3.8%

July 2023

St. John of God, Drumcar absence by Staff Category	Certified absence	Self-certified absence	Non Covid-19 absence	Covid-19 absence	Total absence rate	% Non Covid-19 absence	% Covid-19 absence
St. John of God, Drumcar (CHO 8)	6.0%	0.7%	6.7%	0.6%	7.2%	92.2%	7.8%
Medical & Dental	0.0%	0.0%	0.0%	0.0%	0.0%		
Nursing & Midwifery	5.7%	1.1%	6.7%	0.4%	7.1%	95.0%	5.0%
Health & Social Care Professionals	6.1%	0.4%	6.6%	0.3%	6.9%	95.5%	4.5%
Management & Administrative	6.9%	0.2%	7.0%	0.0%	7.0%	100.0%	0.0%
General Support	5.1%	0.4%	5.5%	0.0%	5.5%	100.0%	0.0%
Patient & Client Care	6.2%	0.6%	6.7%	0.8%	7.6%	89.2%	10.8%

July 2023

St John of God HQ absence by Staff Category	Certified absence	Self-certified absence	Non Covid-19 absence	Covid-19 absence	Total absence rate	% Non Covid-19 absence	% Covid-19 absence
St John of God HQ (CHO 6)	2.7%	0.2%	3.0%	0.0%	3.0%	100.0%	0.0%
Medical & Dental							
Nursing & Midwifery							
Health & Social Care Professionals	11.0%	0.0%	11.0%	0.0%	11.0%	100.0%	0.0%
Management & Administrative	2.0%	0.3%	2.3%	0.0%	2.3%	100.0%	0.0%
General Support	0.0%	0.0%	0.0%	0.0%	0.0%		
Patient & Client Care							

July 2023

St. John of God (IDS) absence by Staff Category	Certified absence	Self-certified absence	Non Covid-19 absence	Covid-19 absence	Total absence rate	% Non Covid-19 absence	% Covid-19 absence
St. John of God (IDS) (CHO 6)	6.3%	0.5%	6.9%	0.4%	7.2%	94.7%	5.3%
Medical & Dental	0.0%	0.0%	0.0%	0.0%	0.0%		
Nursing & Midwifery	6.4%	0.6%	7.0%	0.0%	7.0%	100.0%	0.0%
Health & Social Care Professionals	5.8%	0.5%	6.3%	0.0%	6.3%	100.0%	0.0%
Management & Administrative	5.7%	0.4%	6.1%	0.0%	6.1%	100.0%	0.0%
General Support	11.7%	0.3%	12.0%	0.0%	12.0%	100.0%	0.0%
Patient & Client Care	6.3%	0.6%	6.9%	1.0%	7.9%	86.9%	13.1%

July 2023

St. John of God, Kerry absence by Staff Category	Certified absence	Self-certified absence	Non Covid-19 absence	Covid-19 absence	Total absence rate	% Non Covid-19 absence	% Covid-19 absence
St. John of God, Kerry (CHO 4)	4.2%	0.3%	4.4%	0.0%	4.4%	99.4%	0.6%
Medical & Dental							
Nursing & Midwifery	0.4%	0.3%	0.7%	0.0%	0.7%	100.0%	0.0%
Health & Social Care Professionals	7.0%	0.2%	7.3%	0.0%	7.3%	100.0%	0.0%
Management & Administrative	2.8%	0.5%	3.3%	0.0%	3.3%	100.0%	0.0%
General Support	5.9%	0.0%	5.9%	0.0%	5.9%	100.0%	0.0%
Patient & Client Care	4.3%	0.2%	4.6%	0.1%	4.6%	98.9%	1.1%

July 2023

St. John of God Liffey Services absence by Staff Category	Certified absence	Self-certified absence	Non Covid-19 absence	Covid-19 absence	Total absence rate	% Non Covid-19 absence	% Covid-19 absence
St. John of God Liffey Services (CHO 7)	3.1%	0.4%	3.4%	0.1%	3.5%	96.7%	3.3%
Medical & Dental	0.0%	0.0%	0.0%	0.0%	0.0%		
Nursing & Midwifery	4.4%	0.3%	4.7%	0.0%	4.7%	100.0%	0.0%
Health & Social Care Professionals	2.3%	0.4%	2.7%	0.1%	2.8%	97.6%	2.4%
Management & Administrative	5.0%	0.0%	5.0%	1.6%	6.5%	76.1%	23.9%
General Support	4.5%	0.3%	4.9%	0.0%	4.9%	100.0%	0.0%
Patient & Client Care	2.8%	0.4%	3.3%	0.1%	3.4%	98.0%	2.0%

July 2023

St. Michael's House, Dublin absence by Staff Category	Certified absence	Self-certified absence	Non Covid-19 absence	Covid-19 absence	Total absence rate	% Non Covid-19 absence	% Covid-19 absence
St. Michael's House, Dublin (CHO 9)	4.4%	0.3%	4.7%	0.1%	4.8%	97.2%	2.8%
Medical & Dental	0.0%	0.0%	0.0%	0.0%	0.0%		
Nursing & Midwifery	2.2%	0.3%	2.5%	0.1%	2.6%	95.2%	4.8%
Health & Social Care Professionals	4.4%	0.3%	4.7%	0.2%	4.8%	96.3%	3.7%
Management & Administrative	3.0%	0.0%	3.0%	0.0%	3.0%	100.0%	0.0%
General Support	11.8%	0.4%	12.2%	0.3%	12.5%	97.4%	2.6%
Patient & Client Care	5.8%	0.3%	6.1%	0.1%	6.1%	98.9%	1.1%

July 2023

Sunbeam House Services absence by Staff Category	Certified absence	Self-certified absence	Non Covid-19 absence	Covid-19 absence	Total absence rate	% Non Covid-19 absence	% Covid-19 absence
Sunbeam House Services (CHO 6)	2.8%	0.5%	3.3%	0.2%	3.5%	94.2%	5.8%
Medical & Dental							
Nursing & Midwifery	0.6%	0.8%	1.5%	0.0%	1.5%	100.0%	0.0%
Health & Social Care Professionals	2.5%	0.5%	2.9%	0.2%	3.1%	95.1%	4.9%
Management & Administrative	2.5%	0.2%	2.7%	0.0%	2.7%	100.0%	0.0%
General Support	0.6%	0.9%	1.5%	0.0%	1.5%	100.0%	0.0%
Patient & Client Care	3.7%	0.7%	4.4%	0.4%	4.8%	92.3%	7.7%

Social Care

Year/ month	Medical & Dental	Nursing & Midwifery	Health & Social Care Professionals	Management & Administrative	General Support	Patient & Client Care	Certified absence	Self-certified absence	Non Covid-19 absence	Covid-19 absence	Total absence rate
2023	2.3%	6.9%	4.9%	4.2%	7.3%	7.1%	5.3%	0.6%	5.9%	0.6%	6.5%
Jul 2023	1.9%	6.8%	4.4%	3.9%	7.3%	6.8%	5.1%	0.6%	5.6%	0.5%	6.2%
Jun 2023	2.3%	6.9%	4.8%	4.4%	7.2%	6.9%	5.4%	0.6%	5.9%	0.4%	6.4%
May 2023	1.7%	6.8%	5.1%	4.0%	7.5%	7.1%	5.4%	0.5%	5.9%	0.5%	6.4%
Apr 2023	1.9%	6.8%	5.0%	4.0%	6.9%	7.0%	5.2%	0.6%	5.8%	0.6%	6.3%
Mar 2023	2.1%	6.4%	5.5%	4.6%	7.2%	7.1%	5.2%	0.6%	5.8%	0.7%	6.5%
Feb 2023	3.0%	6.6%	4.4%	4.4%	7.0%	6.6%	4.9%	0.5%	5.5%	0.6%	6.1%
Jan 2023	3.3%	8.2%	5.6%	4.4%	8.1%	8.3%	5.7%	0.7%	6.4%	1.1%	7.5%
2022	1.9%	8.5%	6.1%	5.0%	8.2%	9.0%	5.1%	0.6%	5.8%	2.2%	8.0%
Dec 2022	2.4%	8.3%	6.5%	4.9%	8.2%	8.9%	5.8%	0.8%	6.6%	1.4%	8.0%
Nov 2022	1.5%	7.2%	4.8%	3.8%	6.9%	7.7%	5.1%	0.6%	5.7%	0.9%	6.6%
Oct 2022	1.7%	6.9%	5.2%	3.7%	7.1%	8.1%	5.3%	0.6%	5.9%	1.0%	6.9%
Sep 2022	1.1%	7.0%	4.8%	4.1%	6.9%	7.8%	5.3%	0.6%	5.9%	0.9%	6.8%
Aug 2022	2.8%	6.7%	5.3%	4.0%	6.9%	8.1%	5.3%	0.5%	5.8%	1.0%	6.8%
Jul 2022	2.4%	8.3%	6.2%	5.1%	7.8%	9.4%	5.5%	0.5%	6.0%	2.1%	8.1%
Jun 2022	2.9%	7.8%	6.2%	4.9%	8.0%	8.5%	5.1%	0.6%	5.7%	1.9%	7.6%
May 2022	2.5%	7.0%	4.3%	4.3%	7.4%	7.8%	4.8%	0.6%	5.4%	1.2%	6.6%
Apr 2022	0.9%	9.6%	6.9%	5.6%	9.6%	9.7%	5.1%	0.6%	5.8%	3.1%	8.8%
Mar 2022	1.7%	11.7%	8.1%	7.4%	10.8%	11.1%	5.1%	0.6%	5.8%	4.6%	10.4%
Feb 2022	1.5%	9.5%	6.8%	5.4%	8.3%	9.1%	4.7%	0.6%	5.3%	3.2%	8.4%
Jan 2022	1.3%	11.6%	8.3%	6.4%	10.5%	12.0%	4.6%	0.6%	5.2%	5.6%	10.8%
2021	2.2%	7.7%	5.4%	4.0%	7.2%	7.9%	4.7%	0.5%	5.2%	1.8%	7.1%
Dec 2021	1.6%	9.1%	6.8%	5.4%	9.2%	9.4%	5.0%	0.6%	5.6%	3.0%	8.6%
Nov 2021	2.3%	9.1%	6.8%	5.7%	8.3%	9.3%	5.1%	0.7%	5.9%	2.6%	8.4%
Oct 2021	1.4%	7.8%	5.6%	4.8%	7.4%	7.8%	5.1%	0.6%	5.7%	1.5%	7.2%
Sep 2021	3.3%	7.4%	5.0%	4.0%	6.7%	7.4%	5.0%	0.5%	5.5%	1.2%	6.7%
Aug 2021	4.2%	6.9%	4.7%	4.0%	6.5%	7.4%	5.0%	0.4%	5.4%	1.1%	6.5%
Jul 2021	2.9%	6.4%	4.4%	3.6%	7.0%	6.9%	4.9%	0.5%	5.3%	0.8%	6.1%
Jun 2021	1.5%	6.2%	4.1%	3.4%	6.3%	6.5%	4.5%	0.5%	5.0%	0.7%	5.7%
May 2021	1.2%	5.6%	4.1%	2.9%	5.5%	6.1%	4.2%	0.4%	4.6%	0.8%	5.4%
Apr 2021	0.7%	6.3%	4.5%	3.2%	5.8%	6.3%	4.3%	0.4%	4.7%	1.0%	5.7%
Mar 2021	1.2%	6.5%	4.8%	3.5%	5.6%	6.7%	4.3%	0.5%	4.8%	1.2%	6.0%

Feb 2021	3.0%	9.4%	6.0%	3.5%	7.3%	9.2%	4.7%	0.5%	5.2%	2.9%	8.2%
Jan 2021	2.6%	11.7%	7.8%	4.5%	10.3%	11.6%	4.9%	0.4%	5.2%	5.2%	10.4%
2020	2.3%	7.7%	4.9%	3.7%	7.8%	7.6%	4.9%	0.4%	5.3%	1.6%	6.9%
Dec 2020	2.8%	7.1%	4.0%	3.9%	6.5%	7.2%	4.5%	0.4%	4.9%	1.5%	6.4%
Nov 2020	2.1%	6.4%	3.7%	3.6%	6.3%	6.6%	4.4%	0.4%	4.8%	1.0%	5.8%
Oct 2020	1.2%	7.1%	4.8%	3.6%	7.7%	7.4%	4.7%	0.4%	5.0%	1.6%	6.6%
Sep 2020	1.2%	7.3%	4.6%	3.3%	7.6%	7.0%	4.8%	0.4%	5.2%	1.2%	6.4%
Aug 2020	2.9%	6.4%	4.3%	3.5%	6.7%	6.7%	4.8%	0.3%	5.2%	0.8%	6.0%
Jul 2020	0.8%	6.2%	3.8%	2.8%	7.0%	6.5%	4.7%	0.4%	5.1%	0.7%	5.8%
Jun 2020	2.0%	6.4%	3.7%	2.9%	7.2%	6.3%	4.4%	0.3%	4.8%	1.0%	5.7%
May 2020	2.6%	9.9%	5.6%	3.7%	9.5%	9.3%	5.0%	0.3%	5.3%	3.1%	8.5%
Apr 2020	3.2%	15.0%	8.1%	4.9%	12.9%	13.0%	5.6%	0.3%	5.9%	6.1%	12.1%
Mar 2020	3.8%	8.9%	7.1%	5.2%	8.9%	8.8%	5.4%	0.4%	5.8%	2.5%	8.3%
Feb 2020	1.9%	5.7%	4.4%	3.6%	6.3%	6.0%	5.0%	0.5%	5.5%		5.5%
Jan 2020	1.7%	5.9%	4.8%	3.9%	7.2%	6.7%	5.4%	0.6%	6.0%		6.0%

Social Care

Year/ month	CHO 1	CHO 2	CHO 3	CHO 4	CHO 5	CHO 6	CHO 7	CHO 8	CHO 9	other Comm.	Community Services absence rate	Certified absence	Self-certified absence	Non Covid-19 absence	Covid-19 absence	Total absence rate
2023	8.3%	5.6%	5.4%	5.8%	7.5%	5.3%	5.5%	5.9%	5.1%	3.8%	5.9%	4.8%	0.6%	5.4%	0.5%	5.9%
Jul 2023	7.8%	5.3%	5.6%	5.5%	6.9%	5.3%	5.0%	5.5%	5.1%	3.0%	5.6%	4.7%	0.5%	5.2%	0.4%	5.62%
Jun 2023	7.7%	5.9%	5.3%	5.6%	7.7%	5.3%	5.1%	6.0%	5.3%	3.2%	5.8%	5.0%	0.6%	5.5%	0.3%	5.82%
May 2023	8.0%	5.6%	5.6%	5.7%	7.2%	5.2%	5.6%	5.9%	5.1%		5.9%	5.0%	0.5%	5.5%	0.4%	5.87%
Apr 2023	7.8%	6.0%	5.5%	6.1%	7.2%	5.2%	5.4%	5.7%	5.0%		5.9%	4.9%	0.5%	5.4%	0.5%	5.85%
Mar 2023	8.6%	5.2%	4.9%	5.6%	7.6%	6.1%	6.1%	5.8%	5.3%		6.0%	4.9%	0.6%	5.4%	0.6%	6.00%
Feb 2023	8.1%	5.1%	5.0%	5.4%	7.5%	4.7%	4.9%	5.0%	4.5%	11.2%	5.4%	4.4%	0.5%	4.9%	0.5%	5.36%
Jan 2023	9.9%	6.3%	6.2%	6.6%	8.3%	5.6%	6.2%	7.5%	5.1%	11.9%	6.7%	5.1%	0.7%	5.8%	0.9%	6.67%
2022	10.0%	7.0%	6.6%	8.1%	9.3%	6.4%	7.0%	8.2%	5.8%	0.4%	7.4%	4.8%	0.6%	5.4%	2.0%	7.4%
Dec 2022	11.0%	6.5%	6.7%	7.2%	9.9%	6.8%	6.7%	7.1%	6.0%		7.3%	5.4%	0.7%	6.1%	1.2%	7.30%
Nov 2022	8.3%	5.6%	5.4%	6.5%	7.9%	4.8%	5.6%	7.0%	4.4%		5.9%	4.7%	0.6%	5.2%	0.7%	5.95%
Oct 2022	9.7%	5.9%	5.5%	7.1%	8.4%	5.8%	5.5%	6.9%	4.8%		6.3%	4.9%	0.6%	5.5%	0.8%	6.33%
Sep 2022	9.2%	6.0%	5.0%	6.3%	8.3%	5.1%	6.3%	7.0%	5.2%		6.4%	5.1%	0.6%	5.7%	0.7%	6.36%
Aug 2022	10.3%	6.2%	4.7%	6.5%	8.7%	4.4%	5.9%	7.2%	4.9%	2.2%	6.4%	5.0%	0.5%	5.4%	0.9%	6.36%
Jul 2022	10.6%	7.0%	7.1%	7.7%	9.8%	6.0%	7.3%	9.0%	6.1%		7.7%	5.2%	0.5%	5.7%	2.0%	7.71%
Jun 2022	8.6%	7.9%	5.6%	7.7%	8.6%	7.3%	7.2%	7.7%	5.5%	0.7%	7.1%	4.7%	0.6%	5.4%	1.8%	7.15%
May 2022	8.1%	6.0%	5.4%	6.2%	7.9%	5.1%	6.3%	7.0%	5.1%		6.2%	4.6%	0.6%	5.2%	1.1%	6.22%
Apr 2022	9.7%	7.8%	8.3%	10.7%	9.5%	6.6%	8.0%	8.7%	6.2%		8.3%	4.8%	0.7%	5.5%	2.9%	8.31%
Mar 2022	13.3%	8.9%	8.4%	11.2%	11.6%	9.3%	10.0%	11.0%	7.8%		10.0%	4.8%	0.7%	5.5%	4.4%	9.98%
Feb 2022	10.2%	7.0%	7.8%	8.4%	9.0%	8.0%	7.3%	8.1%	6.1%		7.8%	4.2%	0.6%	4.8%	2.9%	7.75%
Jan 2022	11.6%	10.4%	9.8%	12.2%	12.3%	8.2%	8.4%	11.0%	8.0%	1.5%	10.0%	4.3%	0.6%	4.9%	5.1%	10.01%
2021	8.5%	5.8%	5.7%	7.1%	7.0%	5.8%	6.6%	6.6%	5.5%	0.2%	6.4%	4.4%	0.5%	4.9%	1.5%	6.4%
Dec 2021	10.2%	7.7%	7.7%	10.2%	9.2%	6.3%	8.4%	7.0%	6.5%	0.7%	8.1%	4.6%	0.7%	5.3%	2.8%	8.08%
Nov 2021	9.8%	6.7%	7.6%	10.3%	8.2%	6.7%	7.9%	8.0%	7.1%		8.1%	4.9%	0.7%	5.6%	2.4%	8.05%
Oct 2021	8.7%	5.4%	6.4%	8.1%	6.7%	5.2%	6.6%	6.9%	5.9%		6.6%	4.8%	0.5%	5.3%	1.3%	6.62%
Sep 2021	8.3%	4.6%	5.4%	6.9%	6.0%	6.3%	6.3%	6.8%	5.0%	1.9%	6.1%	4.6%	0.5%	5.1%	1.0%	6.12%
Aug 2021	8.9%	4.6%	4.8%	6.0%	6.4%	5.7%	6.2%	6.1%	4.9%		5.9%	4.6%	0.4%	5.0%	0.9%	5.86%
Jul 2021	8.3%	4.4%	4.1%	5.4%	5.1%	6.1%	5.8%	6.3%	4.9%		5.5%	4.5%	0.4%	4.9%	0.6%	5.48%
Jun 2021	7.1%	4.8%	4.5%	5.7%	5.3%	5.0%	5.1%	5.3%	4.5%		5.1%	4.1%	0.5%	4.6%	0.5%	5.15%
May 2021	6.6%	4.6%	4.7%	5.5%	4.8%	4.3%	5.1%	5.0%	4.3%		5.0%	3.9%	0.4%	4.3%	0.7%	4.96%
Apr 2021	6.2%	4.5%	3.9%	5.1%	5.3%	5.0%	5.8%	5.6%	4.6%		5.1%	3.9%	0.4%	4.3%	0.8%	5.13%
Mar 2021	7.1%	6.2%	4.5%	5.4%	6.4%	4.5%	5.5%	5.9%	4.7%		5.5%	4.0%	0.5%	4.5%	1.0%	5.48%
Feb 2021	8.5%	7.6%	5.9%	6.7%	9.0%	6.2%	6.6%	7.7%	5.6%		6.9%	4.4%	0.5%	4.9%	2.0%	6.89%
Jan 2021	12.3%	9.0%	8.8%	10.1%	11.3%	8.9%	9.6%	8.7%	7.8%		9.4%	4.6%	0.3%	4.9%	4.5%	9.40%
2020	7.1%	5.6%	5.2%	6.2%	6.6%	4.7%	7.3%	6.7%	5.8%	0.0%	6.2%	4.5%	0.4%	4.9%	1.4%	6.2%
Dec 2020	7.6%	5.7%	4.7%	5.4%	6.9%	3.8%	6.1%	5.6%	4.5%	0.3%	5.5%	4.2%	0.4%	4.6%	1.0%	5.51%
Nov 2020	7.2%	5.2%	4.9%	5.0%	5.5%	3.5%	5.5%	5.4%	4.1%		5.1%	4.0%	0.3%	4.3%	0.8%	5.09%
Oct 2020	8.6%	5.8%	5.3%	6.5%	5.7%	3.7%	7.2%	6.5%	5.1%		6.1%	4.2%	0.4%	4.6%	1.5%	6.08%
Sep 2020	7.6%	5.3%	5.0%	5.3%	5.7%	4.1%	6.9%	6.1%	5.3%		5.8%	4.3%	0.4%	4.6%	1.1%	5.76%
Aug 2020	7.0%	4.1%	5.6%	5.3%	5.5%	4.0%	5.7%	5.7%	4.8%		5.3%	4.4%	0.3%	4.7%	0.6%	5.32%
Jul 2020	6.1%	4.1%	3.9%	4.6%	6.3%	4.4%	6.1%	6.2%	5.2%		5.3%	4.4%	0.4%	4.8%	0.5%	5.26%
Jun 2020	5.6%	4.3%	4.8%	4.9%	5.4%	3.7%	5.5%	5.4%	4.7%		5.0%	4.0%	0.3%	4.3%	0.7%	5.00%
May 2020	6.2%	6.2%	5.9%	7.7%	6.9%	5.4%	9.2%	8.4%	6.5%		7.2%	4.5%	0.2%	4.7%	2.5%	7.19%
Apr 2020	8.8%	9.0%	6.0%	11.9%	10.2%	10.9%	15.8%	12.1%	9.9%		10.9%	5.2%	0.4%	5.7%	5.3%	10.91%
Mar 2020	9.2%	6.8%	6.8%	8.1%	7.7%	6.0%	9.6%	7.2%	8.5%		8.0%	5.1%	0.4%	5.5%	2.6%	8.01%
Feb 2020	5.5%	5.3%	4.4%	4.9%	6.0%	3.7%	4.9%	5.3%	5.2%		5.0%	4.6%	0.5%	5.0%		5.04%
Jan 2020	6.2%	6.3%	5.1%	5.3%	6.9%	4.0%	5.5%	6.4%	5.2%		5.6%	5.0%	0.6%	5.6%		5.59%

