

March 2021

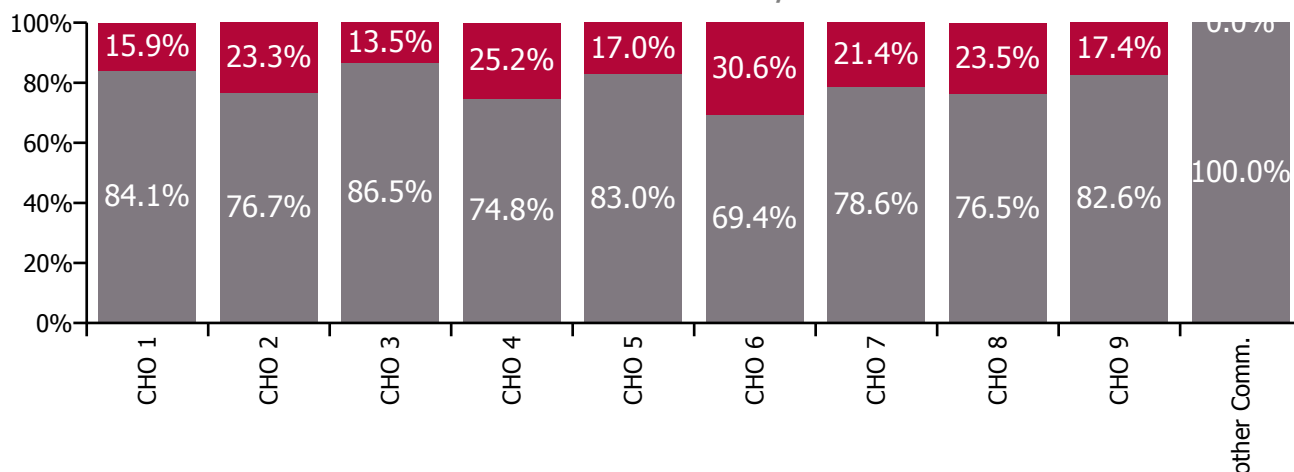
Health Service Absence Rate - by Staff Category: Mar 2021	Certified absence	Self-certified absence	Non Covid-19 absence	Covid-19 absence	Total absence rate	% Non Covid-19 absence	% Covid-19 absence
Social Care	4.3%	0.5%	4.8%	1.2%	6.0%	79.5%	20.5%
Medical & Dental	1.0%	0.0%	1.1%	0.2%	1.2%	85.4%	14.6%
Nursing & Midwifery	4.5%	0.5%	5.0%	1.5%	6.5%	77.3%	22.7%
Health & Social Care Professionals	3.6%	0.3%	3.9%	0.9%	4.8%	81.5%	18.5%
Management & Administrative	2.9%	0.3%	3.1%	0.3%	3.5%	90.3%	9.7%
General Support	4.4%	0.3%	4.7%	0.9%	5.6%	84.6%	15.4%
Patient & Client Care	4.7%	0.5%	5.3%	1.4%	6.7%	78.7%	21.3%

Health Service Absence Rate - Care Group by CHO: Mar 2021	Certified absence	Self-certified absence	Non Covid-19 absence	Covid-19 absence	Total absence rate	% Non Covid-19 absence	% Covid-19 absence
Social Care	4.3%	0.5%	4.8%	1.2%	6.0%	79.5%	20.5%
CHO 1	6.1%	0.3%	6.4%	1.2%	7.6%	84.1%	15.9%
CHO 2	4.0%	0.3%	4.3%	1.3%	5.6%	76.7%	23.3%
CHO 3	4.9%	0.3%	5.2%	0.8%	6.0%	86.5%	13.5%
CHO 4	3.5%	0.8%	4.2%	1.4%	5.7%	74.8%	25.2%
CHO 5	5.1%	0.6%	5.7%	1.2%	6.9%	83.0%	17.0%
CHO 6	3.3%	0.5%	3.8%	1.7%	5.5%	69.4%	30.6%
CHO 7	4.1%	0.6%	4.7%	1.3%	5.9%	78.6%	21.4%
CHO 8	4.7%	0.4%	5.1%	1.6%	6.6%	76.5%	23.5%
CHO 9	3.7%	0.4%	4.0%	0.8%	4.9%	82.6%	17.4%
Other Community Services	0.5%	0.2%	0.7%	0.0%	0.7%	100.0%	0.0%

Total absence rate

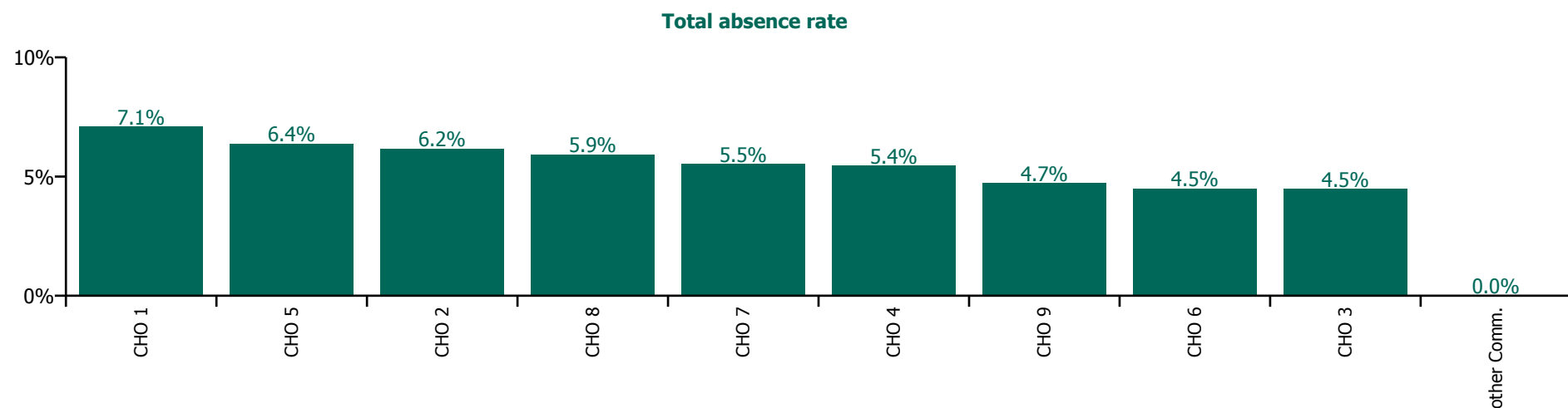


% of Absence Non Covid-19 / Covid-19

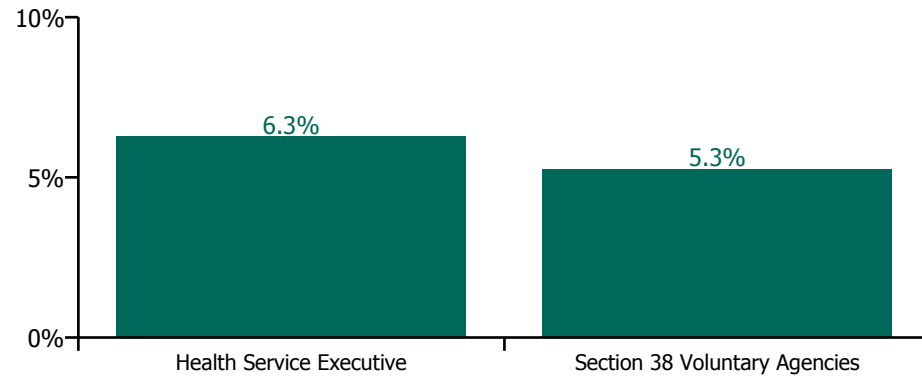


March 2021

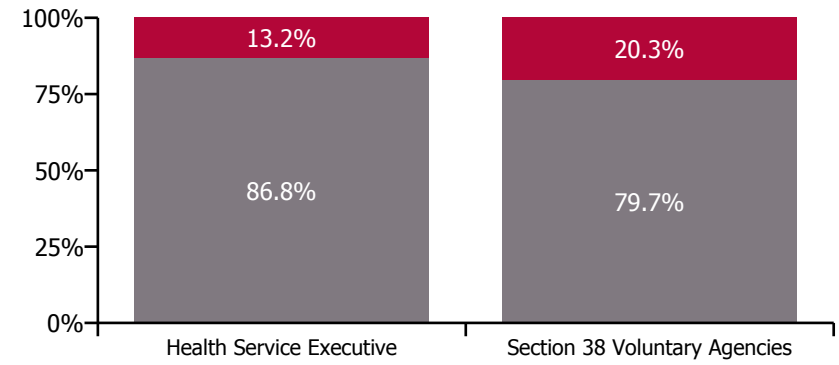
Health Service Absence Rate - by Hospital Group & Staff Category: Mar 2021	Medical & Dental	Nursing & Midwifery	Health & Social Care Professionals	Management & Administrative	General Support	Patient & Client Care	Certified absence	Self-certified absence	Non Covid-19 absence	Covid-19 absence	Total absence rate
Social Care	2.2%	5.7%	4.9%	3.1%	5.3%	6.1%	4.0%	0.5%	4.5%	1.0%	5.5%
CHO 1	0.0%	7.3%	4.5%	4.7%	4.5%	7.7%	6.1%	0.3%	6.5%	0.6%	7.1%
CHO 2	0.0%	4.7%	4.8%	5.7%	4.5%	7.5%	4.3%	0.3%	4.6%	1.6%	6.2%
CHO 3	0.0%	4.8%	5.0%	1.8%	4.1%	4.4%	3.4%	0.2%	3.6%	0.9%	4.5%
CHO 4	0.0%	7.0%	4.6%	1.6%	4.4%	5.8%	3.8%	0.9%	4.7%	0.7%	5.4%
CHO 5	0.0%	5.2%	7.4%	4.8%	6.5%	6.6%	4.4%	0.7%	5.1%	1.3%	6.4%
CHO 6	2.9%	5.1%	4.6%	1.5%	3.4%	5.2%	2.9%	0.6%	3.5%	1.0%	4.5%
CHO 7	0.0%	7.0%	4.4%	3.8%	6.5%	5.6%	3.7%	0.6%	4.4%	1.2%	5.5%
CHO 8	0.0%	6.3%	5.2%	4.7%	7.4%	6.3%	4.0%	0.4%	4.4%	1.6%	5.9%
CHO 9	6.3%	4.1%	4.6%	1.7%	5.4%	6.0%	3.7%	0.3%	4.0%	0.7%	4.7%
Other Community Services				0.0%			0.0%	0.0%	0.0%	0.0%	0.0%



Total absence rate



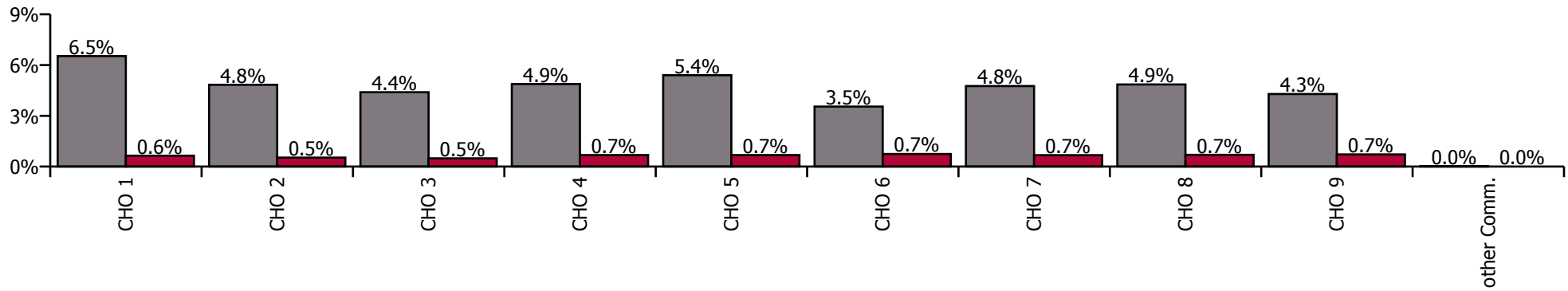
Non Covid-19 & Covid-19 Absence



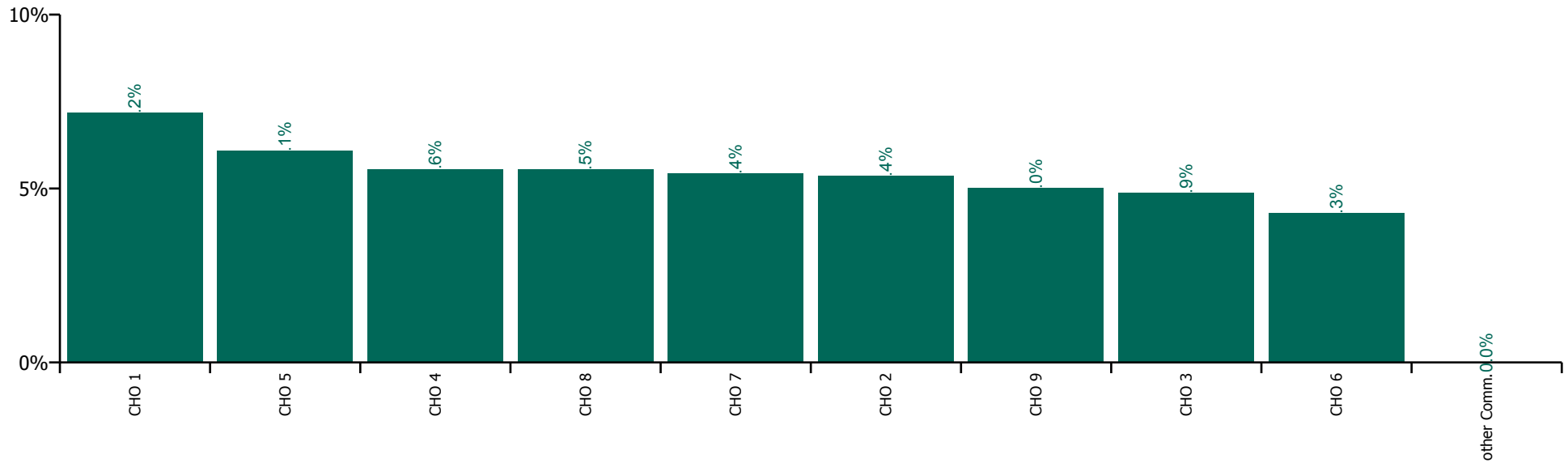
March 2021

Health Service Absence Rate by Hospital: Mar 2021	Medical & Dental	Nursing & Midwifery	Health & Social Care Professionals	Management & Administrative	General Support	Patient & Client Care	Certified absence	Self-certified absence	Non Covid-19 absence	Covid-19 absence	Total absence rate
Social Care	2.2%	6.1%	4.6%	3.2%	5.3%	5.9%	4.4%	0.4%	4.8%	0.7%	5.4%
Health Service Executive	0.3%	8.5%	3.6%	2.7%	4.5%	7.5%	6.2%	0.3%	6.5%	0.6%	7.2%
CHO 1	0.3%	8.5%	3.6%	2.7%	4.5%	7.5%	6.2%	0.3%	6.5%	0.6%	7.2%
Health Service Executive	1.8%	8.4%	4.4%	1.3%	1.0%	5.5%	4.6%	0.3%	4.9%	0.6%	5.5%
Section 38 Voluntary Agencies	2.5%	5.6%	5.0%	3.1%	4.7%	5.8%	4.5%	0.3%	4.8%	0.5%	5.4%
CHO 2	2.3%	6.1%	5.0%	2.8%	4.3%	5.8%	4.5%	0.3%	4.8%	0.5%	5.4%
Health Service Executive			3.4%	4.2%	22.3%	5.7%	4.3%	0.3%	4.6%	0.5%	5.0%
Section 38 Voluntary Agencies	1.8%	5.7%	4.6%	2.6%	4.7%	4.8%	4.1%	0.3%	4.4%	0.5%	4.9%
CHO 3	1.8%	5.7%	4.5%	3.1%	5.5%	4.8%	4.1%	0.3%	4.4%	0.5%	4.9%
Health Service Executive	7.4%	5.1%	4.0%	1.7%	4.2%	4.7%	3.2%	0.6%	3.8%	0.5%	4.3%
Section 38 Voluntary Agencies	0.0%	6.7%	4.6%	3.1%	5.3%	6.0%	4.3%	0.7%	5.0%	0.7%	5.7%
CHO 4	7.3%	6.6%	4.6%	2.8%	5.1%	5.9%	4.2%	0.6%	4.9%	0.7%	5.6%
Health Service Executive	0.0%	7.8%	5.7%	5.8%	5.4%	8.4%	5.9%	0.5%	6.4%	0.7%	7.1%
Section 38 Voluntary Agencies	19.1%	6.8%	6.1%	4.5%	7.0%	5.7%	4.6%	0.6%	5.2%	0.7%	5.9%
CHO 5	14.4%	7.1%	6.0%	4.8%	6.9%	6.0%	4.8%	0.6%	5.4%	0.7%	6.1%
Health Service Executive	0.7%	6.5%	5.2%	3.4%	2.5%	9.0%	3.6%	0.5%	4.1%	2.7%	6.8%
Section 38 Voluntary Agencies	0.0%	4.4%	4.3%	2.3%	4.9%	4.4%	3.0%	0.5%	3.5%	0.6%	4.2%
CHO 6	0.3%	4.6%	4.4%	2.4%	4.9%	4.7%	3.1%	0.5%	3.5%	0.7%	4.3%
Health Service Executive		0.0%	5.3%	5.7%		4.9%	4.6%	0.3%	5.0%	0.4%	5.4%
Section 38 Voluntary Agencies	1.4%	5.8%	4.3%	3.1%	5.4%	6.1%	4.3%	0.4%	4.8%	0.7%	5.4%
CHO 7	1.4%	5.8%	4.4%	3.2%	5.4%	6.1%	4.3%	0.4%	4.8%	0.7%	5.4%
Health Service Executive	0.2%	10.2%	6.4%	5.5%	10.9%	11.0%	7.6%	0.5%	8.1%	1.2%	9.3%
Section 38 Voluntary Agencies	0.2%	4.5%	4.7%	2.9%	5.3%	4.8%	3.7%	0.3%	4.1%	0.6%	4.6%
CHO 8	0.2%	5.8%	4.9%	3.9%	5.8%	6.0%	4.5%	0.4%	4.9%	0.7%	5.5%
Health Service Executive	1.1%	8.4%	4.1%	3.1%	10.8%	8.2%	6.1%	0.4%	6.5%	1.1%	7.6%
Section 38 Voluntary Agencies	2.5%	4.6%	4.5%	3.2%	5.5%	5.4%	3.8%	0.3%	4.1%	0.7%	4.8%
CHO 9	2.4%	5.3%	4.5%	3.2%	5.6%	5.7%	4.0%	0.3%	4.3%	0.7%	5.0%
Other Community Services				0.0%			0.0%	0.0%	0.0%	0.0%	0.0%

Non Covid-19 / Covid-19 absence rates



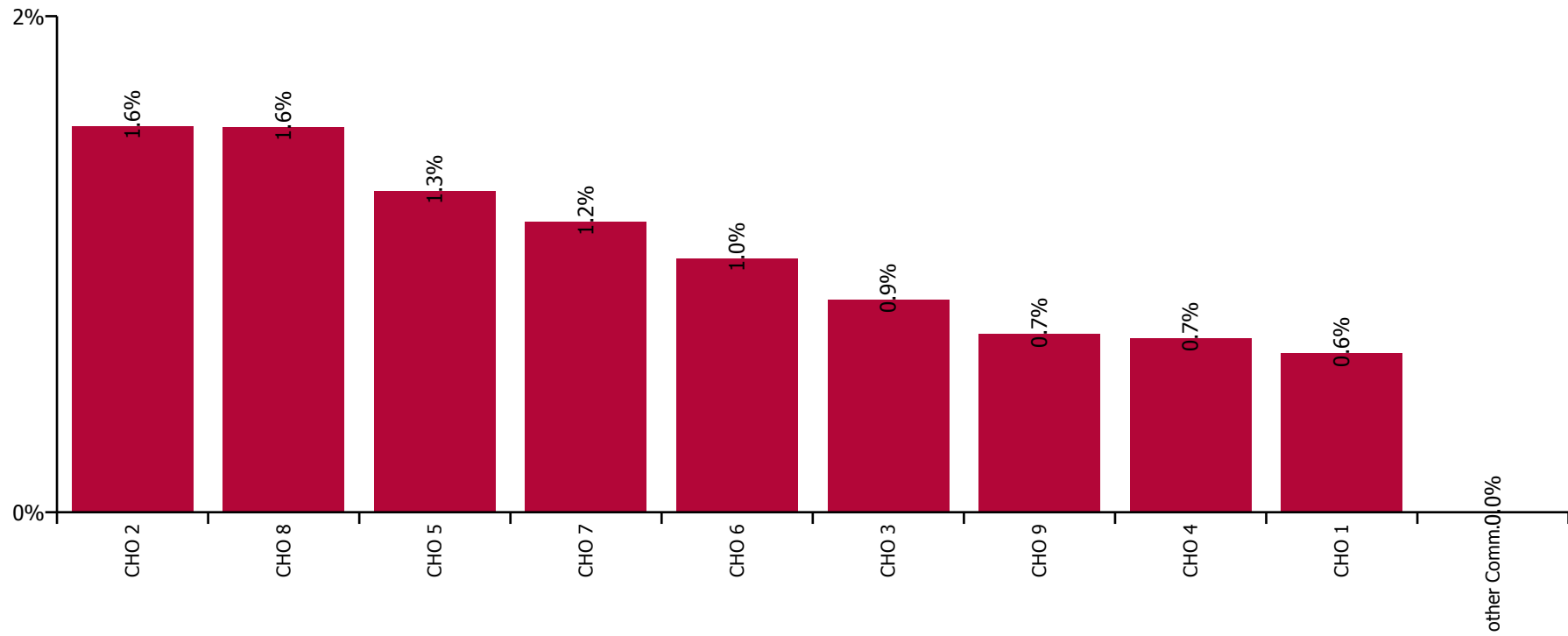
Total absence rate



March 2021

Health Service Covid-19 Absence Rate - by Staff Category & Hospital: Mar 2021	Medical & Dental	Nursing & Midwifery	Health & Social Care Professionals	Management & Administrative	General Support	Patient & Client Care	Covid-19 absence	Non Covid-19 absence	Total absence rate
Social Care	0.5%	1.0%	0.9%	3.1%	0.7%	1.2%	1.0%	4.5%	5.5%
Health Service Executive	0.0%	0.4%	0.4%	4.7%	0.0%	0.8%	0.6%	6.5%	7.1%
CHO 1	0.0%	0.4%	0.4%	4.7%	0.0%	0.8%	0.6%	6.5%	7.1%
Health Service Executive	0.0%	0.0%	0.0%	0.0%	0.0%	1.3%	0.5%	5.0%	5.5%
Section 38 Voluntary Agencies	0.0%	0.9%	2.1%	7.5%	0.1%	2.1%	1.7%	4.5%	6.3%
CHO 2	0.0%	0.7%	1.9%	5.7%	0.1%	2.0%	1.6%	4.6%	6.2%
Health Service Executive			0.0%	2.4%	0.0%	3.3%	1.4%	3.4%	4.8%
Section 38 Voluntary Agencies	0.0%	1.5%	0.3%	1.3%	0.0%	0.8%	0.8%	3.6%	4.4%
CHO 3	0.0%	1.5%	0.3%	1.8%	0.0%	0.9%	0.9%	3.6%	4.5%
Health Service Executive	0.0%	0.5%	0.0%	0.9%	0.0%	0.0%	0.1%	2.0%	2.1%
Section 38 Voluntary Agencies		1.4%	0.6%	1.8%	0.1%	0.8%	0.8%	5.1%	5.8%
CHO 4	0.0%	1.3%	0.5%	1.6%	0.0%	0.7%	0.7%	4.7%	5.4%
Health Service Executive	0.0%	0.0%	0.0%	3.8%	0.0%	1.1%	0.3%	4.4%	4.7%
Section 38 Voluntary Agencies	0.0%	1.9%	2.9%	5.5%	1.7%	1.4%	1.6%	5.3%	6.9%
CHO 5	0.0%	1.2%	1.7%	4.8%	1.5%	1.4%	1.3%	5.1%	6.4%
Health Service Executive	0.0%	1.7%	3.4%	1.0%	0.0%	2.5%	2.1%	3.6%	5.6%
Section 38 Voluntary Agencies	0.0%	1.0%	0.6%	1.6%	0.0%	1.1%	0.8%	3.5%	4.2%
CHO 6	0.0%	1.3%	0.9%	1.5%	0.0%	1.4%	1.0%	3.5%	4.5%
Health Service Executive		0.0%	0.0%	4.3%		1.9%	0.1%	3.7%	3.8%
Section 38 Voluntary Agencies	0.0%	1.2%	1.2%	3.7%	1.2%	1.3%	1.2%	4.4%	5.6%
CHO 7	0.0%	1.2%	1.0%	3.8%	1.2%	1.3%	1.2%	4.4%	5.5%
Health Service Executive	0.0%	0.8%	0.9%	7.4%	9.5%	3.1%	1.9%	6.5%	8.4%
Section 38 Voluntary Agencies	0.0%	2.2%	0.5%	1.7%	0.1%	1.8%	1.4%	3.5%	4.9%
CHO 8	0.0%	1.7%	0.6%	4.7%	1.7%	2.1%	1.6%	4.4%	5.9%
Health Service Executive	6.1%	0.6%	0.0%	1.8%	0.0%	0.2%	0.5%	5.8%	6.3%
Section 38 Voluntary Agencies	0.0%	0.6%	0.9%	1.7%	1.1%	0.8%	0.8%	3.7%	4.5%
CHO 9	1.8%	0.6%	0.9%	1.7%	1.0%	0.7%	0.7%	4.0%	4.7%
Other Community Services				0.0%			0.0%	0.0%	0.0%

Covid-19 absence rate



March 2021

Health Service Absence Rate - by Staff Category: Mar 2021	Certified absence	Self- certified absence	Non Covid-19 absence	Covid-19 absence	Total absence rate	% Non Covid-19 absence	% Covid-19 absence
HSE Social Care CHO 1	6.1%	0.3%	6.4%	1.2%	7.6%	84.1%	15.9%
Medical & Dental	0.0%	0.0%	0.0%	0.0%	0.0%		
Nursing & Midwifery	6.2%	0.3%	6.5%	0.9%	7.4%	87.6%	12.4%
Health & Social Care Professionals	2.7%	0.3%	3.0%	0.3%	3.3%	90.2%	9.8%
Management & Administrative	3.9%	0.1%	4.0%	0.5%	4.5%	88.1%	11.9%
General Support	8.4%	0.2%	8.6%	0.0%	8.6%	100.0%	0.0%
Patient & Client Care	6.4%	0.3%	6.8%	1.7%	8.5%	79.5%	20.5%

March 2021

Health Service Absence Rate - by Staff Category: Mar 2021	Certified absence	Self- certified absence	Non Covid-19 absence	Covid-19 absence	Total absence rate	% Non Covid-19 absence	% Covid-19 absence
HSE Social Care CHO 2	4.0%	0.3%	4.3%	1.3%	5.6%	76.7%	23.3%
Medical & Dental	0.0%	0.0%	0.0%	0.0%	0.0%		
Nursing & Midwifery	4.4%	0.3%	4.7%	1.0%	5.7%	82.2%	17.8%
Health & Social Care Professionals	2.4%	0.2%	2.6%	1.6%	4.3%	61.5%	38.5%
Management & Administrative	3.3%	0.2%	3.5%	0.1%	3.7%	95.9%	4.1%
General Support	2.4%	0.1%	2.5%	0.0%	2.6%	98.1%	1.9%
Patient & Client Care	4.6%	0.3%	4.9%	1.6%	6.5%	74.8%	25.2%

March 2021

Health Service Absence Rate - by Staff Category: Mar 2021	Certified absence	Self- certified absence	Non Covid-19 absence	Covid-19 absence	Total absence rate	% Non Covid-19 absence	% Covid-19 absence
HSE Social Care CHO 3	4.9%	0.3%	5.2%	0.8%	6.0%	86.5%	13.5%
Medical & Dental	1.9%	0.0%	1.9%	0.0%	1.9%	100.0%	0.0%
Nursing & Midwifery	5.6%	0.4%	6.0%	1.1%	7.1%	83.9%	16.1%
Health & Social Care Professionals	4.6%	0.2%	4.8%	0.3%	5.1%	94.7%	5.3%
Management & Administrative	2.6%	0.4%	3.0%	1.0%	4.0%	74.4%	25.6%
General Support	5.4%	0.3%	5.7%	0.3%	6.0%	94.8%	5.2%
Patient & Client Care	4.9%	0.3%	5.1%	0.8%	6.0%	85.9%	14.1%

March 2021

Health Service Absence Rate - by Staff Category: Mar 2021	Certified absence	Self- certified absence	Non Covid-19 absence	Covid-19 absence	Total absence rate	% Non Covid-19 absence	% Covid-19 absence
HSE Social Care CHO 4	3.5%	0.8%	4.2%	1.4%	5.7%	74.8%	25.2%
Medical & Dental	0.0%	0.0%	0.0%	0.0%	0.0%		
Nursing & Midwifery	3.6%	0.9%	4.6%	2.1%	6.7%	68.1%	31.9%
Health & Social Care Professionals	3.1%	0.7%	3.8%	0.5%	4.3%	88.4%	11.6%
Management & Administrative	1.7%	0.4%	2.1%	0.0%	2.1%	99.6%	0.4%
General Support	3.2%	0.3%	3.5%	1.8%	5.3%	66.3%	33.7%
Patient & Client Care	3.8%	0.8%	4.6%	1.5%	6.1%	75.9%	24.1%

March 2021

Health Service Absence Rate - by Staff Category: Mar 2021	Certified absence	Self- certified absence	Non Covid-19 absence	Covid-19 absence	Total absence rate	% Non Covid-19 absence	% Covid-19 absence
HSE Social Care CHO 5	5.1%	0.6%	5.7%	1.2%	6.9%	83.0%	17.0%
Medical & Dental	0.0%	0.0%	0.0%	0.0%	0.0%		
Nursing & Midwifery	5.1%	0.5%	5.7%	1.2%	6.9%	82.7%	17.3%
Health & Social Care Professionals	4.9%	0.3%	5.3%	1.5%	6.8%	77.3%	22.7%
Management & Administrative	4.9%	0.5%	5.4%	0.5%	5.9%	91.7%	8.3%
General Support	4.0%	0.2%	4.2%	1.5%	5.7%	73.2%	26.8%
Patient & Client Care	5.2%	0.8%	6.0%	1.2%	7.2%	83.8%	16.2%

March 2021

Health Service Absence Rate - by Staff Category: Mar 2021	Certified absence	Self- certified absence	Non Covid-19 absence	Covid-19 absence	Total absence rate	% Non Covid-19 absence	% Covid-19 absence
HSE Social Care CHO 6	3.3%	0.5%	3.8%	1.7%	5.5%	69.4%	30.6%
Medical & Dental	1.6%	0.0%	1.6%	0.0%	1.6%	100.0%	0.0%
Nursing & Midwifery	3.3%	0.5%	3.9%	2.5%	6.4%	60.5%	39.5%
Health & Social Care Professionals	3.3%	0.6%	4.0%	0.9%	4.9%	80.9%	19.1%
Management & Administrative	1.8%	0.3%	2.1%	0.4%	2.5%	84.3%	15.7%
General Support	3.8%	0.4%	4.2%	0.9%	5.0%	82.6%	17.4%
Patient & Client Care	3.6%	0.6%	4.1%	2.2%	6.3%	64.7%	35.3%

March 2021

Health Service Absence Rate - by Staff Category: Mar 2021	Certified absence	Self- certified absence	Non Covid-19 absence	Covid-19 absence	Total absence rate	% Non Covid-19 absence	% Covid-19 absence
HSE Social Care CHO 7	4.1%	0.6%	4.7%	1.3%	5.9%	78.6%	21.4%
Medical & Dental	0.0%	0.0%	0.0%	0.0%	0.0%		
Nursing & Midwifery	4.9%	0.8%	5.6%	1.8%	7.5%	75.6%	24.4%
Health & Social Care Professionals	2.9%	0.4%	3.3%	1.1%	4.4%	75.4%	24.6%
Management & Administrative	3.2%	0.2%	3.3%	0.3%	3.6%	92.2%	7.8%
General Support	4.6%	0.5%	5.1%	1.2%	6.3%	81.0%	19.0%
Patient & Client Care	4.2%	0.7%	4.8%	1.3%	6.1%	79.4%	20.6%

March 2021

Health Service Absence Rate - by Staff Category: Mar 2021	Certified absence	Self- certified absence	Non Covid-19 absence	Covid-19 absence	Total absence rate	% Non Covid-19 absence	% Covid-19 absence
HSE Social Care CHO 8	4.7%	0.4%	5.1%	1.6%	6.6%	76.5%	23.5%
Medical & Dental	0.0%	0.0%	0.0%	0.0%	0.0%		
Nursing & Midwifery	3.9%	0.5%	4.4%	1.6%	6.0%	73.3%	26.7%
Health & Social Care Professionals	4.4%	0.3%	4.7%	0.5%	5.2%	89.7%	10.3%
Management & Administrative	3.9%	0.3%	4.1%	0.5%	4.6%	89.0%	11.0%
General Support	4.3%	0.5%	4.8%	0.9%	5.7%	84.0%	16.0%
Patient & Client Care	5.3%	0.4%	5.8%	2.1%	7.9%	73.1%	26.9%

March 2021

Health Service Absence Rate - by Staff Category: Mar 2021	Certified absence	Self-certified absence	Non Covid-19 absence	Covid-19 absence	Total absence rate	% Non Covid-19 absence	% Covid-19 absence
HSE Social Care CHO 9	3.7%	0.4%	4.0%	0.8%	4.9%	82.6%	17.4%
Medical & Dental	3.6%	0.2%	3.7%	0.8%	4.5%	82.5%	17.5%
Nursing & Midwifery	3.4%	0.4%	3.8%	1.2%	5.1%	75.4%	24.6%
Health & Social Care Professionals	3.6%	0.2%	3.8%	0.9%	4.7%	80.0%	20.0%
Management & Administrative	2.3%	0.2%	2.5%	0.2%	2.7%	93.6%	6.4%
General Support	3.4%	0.3%	3.8%	0.7%	4.5%	84.0%	16.0%
Patient & Client Care	4.5%	0.5%	5.1%	0.6%	5.7%	88.9%	11.1%

March 2021

Health Service Absence Rate - by Staff Category: Mar 2021	Certified absence	Self- certified absence	Non Covid-19 absence	Covid-19 absence	Total absence rate	% Non Covid-19 absence	% Covid-19 absence
HSE Social Care Other Community Services	0.5%	0.2%	0.7%	0.0%	0.7%	100.0%	0.0%
Medical & Dental							
Nursing & Midwifery							
Health & Social Care Professionals							
Management & Administrative	0.5%	0.2%	0.7%	0.0%	0.7%	100.0%	0.0%
General Support							
Patient & Client Care	0.0%	0.0%	0.0%	0.0%	0.0%		#DIV/0

March 2021

Bros. of Charity, Clare absence by Staff Category	Certified absence	Self-certified absence	Non Covid-19 absence	Covid-19 absence	Total absence rate	% Non Covid-19 absence	% Covid-19 absence
Bros. of Charity, Clare (CHO 3)	4.1%	0.2%	4.4%	0.3%	4.7%	92.7%	7.3%
Medical & Dental	0.0%	0.0%	0.0%	0.0%	0.0%		
Nursing & Midwifery	0.0%	0.0%	0.0%	0.0%	0.0%		#DIV/0
Health & Social Care Professionals	7.7%	0.1%	7.8%	0.5%	8.3%	94.4%	5.6%
Management & Administrative	2.3%	2.3%	4.5%	0.0%	4.5%	100.0%	0.0%
General Support							
Patient & Client Care	3.1%	0.2%	3.3%	0.3%	3.6%	91.1%	8.9%

March 2021

Bros. of Charity, Limerick absence by Staff Category	Certified absence	Self-certified absence	Non Covid-19 absence	Covid-19 absence	Total absence rate	% Non Covid-19 absence	% Covid-19 absence
Bros. of Charity, Limerick (CHO 3)	3.3%	0.4%	3.7%	1.1%	4.7%	77.3%	22.7%
Medical & Dental	0.0%	0.0%	0.0%	0.0%	0.0%		
Nursing & Midwifery	2.8%	0.5%	3.4%	1.7%	5.1%	65.9%	34.1%
Health & Social Care Professionals	4.0%	0.4%	4.3%	0.5%	4.8%	89.8%	10.2%
Management & Administrative	0.1%	0.3%	0.3%	0.0%	0.3%	100.0%	0.0%
General Support	0.0%	0.0%	0.0%	0.0%	0.0%		
Patient & Client Care	3.5%	0.3%	3.8%	1.2%	5.0%	76.4%	23.6%

March 2021

Bros. of Charity, Southern absence by Staff Category	Certified absence	Self-certified absence	Non Covid-19 absence	Covid-19 absence	Total absence rate	% Non Covid-19 absence	% Covid-19 absence
Bros. of Charity, Southern (CHO 4)	4.0%	0.6%	4.6%	0.7%	5.3%	86.0%	14.0%
Medical & Dental							
Nursing & Midwifery	7.9%	0.2%	8.1%	2.6%	10.7%	75.9%	24.1%
Health & Social Care Professionals	3.6%	0.4%	4.0%	0.5%	4.5%	88.1%	11.9%
Management & Administrative	2.4%	0.7%	3.1%	0.0%	3.1%	100.0%	0.0%
General Support	2.6%	0.4%	3.0%	0.0%	3.0%	100.0%	0.0%
Patient & Client Care	3.8%	0.7%	4.5%	0.6%	5.1%	87.5%	12.5%

March 2021

Bros. of Charity, Waterford absence by Staff Category	Certified absence	Self-certified absence	Non Covid-19 absence	Covid-19 absence	Total absence rate	% Non Covid-19 absence	% Covid-19 absence
Bros. of Charity, Waterford (CHO 5)	4.4%	1.0%	5.4%	2.7%	8.1%	67.0%	33.0%
Medical & Dental	0.0%	0.0%	0.0%	0.0%	0.0%		
Nursing & Midwifery	2.4%	0.8%	3.2%	3.5%	6.7%	48.1%	51.9%
Health & Social Care Professionals	6.0%	0.6%	6.6%	5.2%	11.9%	56.0%	44.0%
Management & Administrative	5.7%	0.8%	6.5%	0.0%	6.5%	100.0%	0.0%
General Support	0.0%	0.0%	0.0%	3.7%	3.7%	0.0%	100.0%
Patient & Client Care	4.4%	1.2%	5.5%	2.3%	7.8%	71.1%	28.9%

March 2021

Bros. of Charity, West Region absence by Staff Category	Certified absence	Self-certified absence	Non Covid-19 absence	Covid-19 absence	Total absence rate	% Non Covid-19 absence	% Covid-19 absence
Bros. of Charity, West Region (CHO 2)	4.2%	0.3%	4.5%	1.7%	6.3%	72.3%	27.7%
Medical & Dental	0.0%	0.0%	0.0%	0.0%	0.0%		
Nursing & Midwifery	2.2%	0.3%	2.6%	0.9%	3.5%	73.2%	26.8%
Health & Social Care Professionals	3.0%	0.3%	3.3%	2.1%	5.4%	61.0%	39.0%
Management & Administrative	6.9%	0.3%	7.3%	0.2%	7.5%	97.3%	2.7%
General Support	4.9%	0.2%	5.1%	0.1%	5.3%	97.4%	2.6%
Patient & Client Care	5.0%	0.3%	5.3%	2.1%	7.5%	71.5%	28.5%

March 2021

Carriglea Cairde Services absence by Staff Category	Certified absence	Self-certified absence	Non Covid-19 absence	Covid-19 absence	Total absence rate	% Non Covid-19 absence	% Covid-19 absence
Carriglea Cairde Services (CHO 5)	3.6%	0.2%	3.8%	0.4%	4.2%	90.6%	9.4%
Medical & Dental							
Nursing & Midwifery	2.3%	0.5%	2.8%	0.2%	3.0%	92.5%	7.5%
Health & Social Care Professionals	6.1%	0.0%	6.1%	0.0%	6.1%	100.0%	0.0%
Management & Administrative	0.2%	0.3%	0.5%	0.0%	0.5%	100.0%	0.0%
General Support	2.3%	0.0%	2.3%	1.5%	3.8%	60.4%	39.6%
Patient & Client Care	3.8%	0.2%	4.0%	0.5%	4.5%	88.7%	11.3%

March 2021

Central Remedial Clinic absence by Staff Category	Certified absence	Self-certified absence	Non Covid-19 absence	Covid-19 absence	Total absence rate	% Non Covid-19 absence	% Covid-19 absence
Central Remedial Clinic (CHO 9)	0.4%	0.3%	0.7%	0.4%	1.1%	64.1%	35.9%
Medical & Dental	0.0%	0.0%	0.0%	0.0%	0.0%		
Nursing & Midwifery	0.0%	0.3%	0.3%	0.0%	0.3%	100.0%	0.0%
Health & Social Care Professionals	0.9%	0.1%	1.0%	0.8%	1.8%	57.5%	42.5%
Management & Administrative	0.0%	0.6%	0.6%	0.0%	0.6%	100.0%	0.0%
General Support	0.8%	0.7%	1.6%	1.3%	2.9%	55.6%	44.4%
Patient & Client Care	0.0%	0.2%	0.2%	0.0%	0.2%	100.0%	0.0%

March 2021

Cheeverstown House absence by Staff Category	Certified absence	Self-certified absence	Non Covid-19 absence	Covid-19 absence	Total absence rate	% Non Covid-19 absence	% Covid-19 absence
Cheeverstown House (CHO 7)	4.9%	0.7%	5.7%	1.2%	6.9%	82.4%	17.6%
Medical & Dental	0.0%	0.0%	0.0%	0.0%	0.0%		
Nursing & Midwifery	6.3%	1.0%	7.2%	0.5%	7.7%	93.8%	6.2%
Health & Social Care Professionals	0.6%	0.4%	1.0%	1.6%	2.6%	37.6%	62.4%
Management & Administrative	5.6%	0.6%	6.2%	0.5%	6.7%	93.0%	7.0%
General Support	8.4%	0.0%	8.4%	4.1%	12.5%	67.3%	32.7%
Patient & Client Care	4.8%	0.8%	5.6%	1.2%	6.9%	81.9%	18.1%

March 2021

Children's Sunshine Home absence by Staff Category	Certified absence	Self-certified absence	Non Covid-19 absence	Covid-19 absence	Total absence rate	% Non Covid-19 absence	% Covid-19 absence
Children's Sunshine Home (CHO 6)	6.4%	0.8%	7.2%	0.1%	7.3%	98.2%	1.8%
Medical & Dental							
Nursing & Midwifery	7.9%	0.6%	8.5%	0.0%	8.5%	100.0%	0.0%
Health & Social Care Professionals	0.0%	0.0%	0.0%	0.0%	0.0%		#DIV/0
Management & Administrative	0.0%	0.7%	0.7%	0.0%	0.7%	100.0%	0.0%
General Support	0.0%	1.7%	1.7%	0.0%	1.7%	100.0%	0.0%
Patient & Client Care	8.5%	1.0%	9.4%	0.4%	9.8%	96.0%	4.0%

March 2021

Cope Foundation absence by Staff Category	Certified absence	Self-certified absence	Non Covid-19 absence	Covid-19 absence	Total absence rate	% Non Covid-19 absence	% Covid-19 absence
Cope Foundation (CHO 4)	4.6%	1.5%	6.1%	0.9%	7.0%	87.3%	12.7%
Medical & Dental							
Nursing & Midwifery	3.9%	1.9%	5.8%	1.4%	7.2%	80.8%	19.2%
Health & Social Care Professionals	4.7%	1.9%	6.6%	0.0%	6.6%	100.0%	0.0%
Management & Administrative	0.5%	0.7%	1.1%	0.0%	1.1%	100.0%	0.0%
General Support	5.7%	0.5%	6.2%	0.0%	6.2%	100.0%	0.0%
Patient & Client Care	5.1%	1.5%	6.6%	1.0%	7.6%	86.4%	13.6%

March 2021

Daughters of Charity, Dublin absence by Staff Category	Certified absence	Self-certified absence	Non Covid-19 absence	Covid-19 absence	Total absence rate	% Non Covid-19 absence	% Covid-19 absence
Daughters of Charity, Dublin (CHO 9)	3.0%	0.5%	3.4%	1.1%	4.5%	76.3%	23.7%
Medical & Dental							
Nursing & Midwifery	2.8%	0.4%	3.2%	0.8%	4.0%	79.2%	20.8%
Health & Social Care Professionals	2.7%	0.4%	3.1%	2.1%	5.2%	59.3%	40.7%
Management & Administrative	2.4%	0.2%	2.5%	0.0%	2.5%	100.0%	0.0%
General Support	1.6%	0.4%	2.0%	0.0%	2.0%	100.0%	0.0%
Patient & Client Care	3.6%	0.7%	4.4%	1.0%	5.4%	80.8%	19.2%

March 2021

Daughters of Charity, Limerick absence by Staff Category	Certified absence	Self-certified absence	Non Covid-19 absence	Covid-19 absence	Total absence rate	% Non Covid-19 absence	% Covid-19 absence
Daughters of Charity, Limerick (CHO 3)	3.1%	0.2%	3.3%	1.2%	4.4%	73.6%	26.4%
Medical & Dental							
Nursing & Midwifery	3.3%	0.1%	3.4%	1.7%	5.0%	66.6%	33.4%
Health & Social Care Professionals	1.8%	0.2%	2.0%	0.1%	2.1%	93.6%	6.4%
Management & Administrative							
General Support	3.1%	0.2%	3.3%	0.0%	3.3%	100.0%	0.0%
Patient & Client Care	3.6%	0.2%	3.8%	1.4%	5.2%	73.2%	26.8%

March 2021

Daughters of Charity, Roscrea absence by Staff Category	Certified absence	Self-certified absence	Non Covid-19 absence	Covid-19 absence	Total absence rate	% Non Covid-19 absence	% Covid-19 absence
Daughters of Charity, Roscrea (CHO 3)	3.2%	0.2%	3.4%	0.3%	3.7%	92.5%	7.5%
Medical & Dental							
Nursing & Midwifery	2.0%	0.3%	2.3%	0.0%	2.3%	100.0%	0.0%
Health & Social Care Professionals	9.6%	0.0%	9.6%	0.0%	9.6%	100.0%	0.0%
Management & Administrative	0.0%	0.3%	0.3%	0.0%	0.3%	100.0%	0.0%
General Support							
Patient & Client Care	2.7%	0.3%	2.9%	0.4%	3.3%	88.3%	11.7%

March 2021

Incorporated Orthopaedic Hospital absence by Staff Category	Certified absence	Self-certified absence	Non Covid-19 absence	Covid-19 absence	Total absence rate	% Non Covid-19 absence	% Covid-19 absence
Incorporated Orthopaedic Hospital (CHO 9)	2.5%	0.2%	2.7%	1.9%	4.7%	58.9%	41.1%
Medical & Dental	0.0%	0.0%	0.0%	0.0%	0.0%		
Nursing & Midwifery	3.2%	0.2%	3.4%	3.8%	7.1%	47.2%	52.8%
Health & Social Care Professionals	1.3%	0.0%	1.3%	4.1%	5.4%	24.1%	75.9%
Management & Administrative	7.7%	0.0%	7.7%	0.0%	7.7%	100.0%	0.0%
General Support	3.1%	0.4%	3.4%	0.0%	3.4%	100.0%	0.0%
Patient & Client Care	1.0%	0.5%	1.5%	0.0%	1.5%	100.0%	0.0%

March 2021

Kare, Newbridge, Co Kildare absence by Staff Category	Certified absence	Self-certified absence	Non Covid-19 absence	Covid-19 absence	Total absence rate	% Non Covid-19 absence	% Covid-19 absence
Kare, Newbridge, Co Kildare (CHO 7)	3.9%	0.8%	4.7%	1.1%	5.8%	81.4%	18.6%
Medical & Dental							
Nursing & Midwifery	2.9%	0.2%	3.1%	4.3%	7.3%	41.7%	58.3%
Health & Social Care Professionals	5.1%	0.5%	5.7%	0.5%	6.1%	92.1%	7.9%
Management & Administrative	2.8%	0.0%	2.8%	0.7%	3.5%	80.0%	20.0%
General Support	0.0%	0.0%	0.0%	0.0%	0.0%		
Patient & Client Care	3.8%	1.1%	4.9%	0.9%	5.8%	84.1%	15.9%

March 2021

Leopardstown Park Hospital absence by Staff Category	Certified absence	Self-certified absence	Non Covid-19 absence	Covid-19 absence	Total absence rate	% Non Covid-19 absence	% Covid-19 absence
Leopardstown Park Hospital (CHO 6)	3.5%	0.3%	3.7%	1.5%	5.3%	70.8%	29.2%
Medical & Dental							
Nursing & Midwifery	3.1%	0.8%	3.8%	0.0%	3.8%	100.0%	0.0%
Health & Social Care Professionals	0.0%	0.0%	0.0%	6.4%	6.4%	0.0%	100.0%
Management & Administrative	4.9%	0.0%	4.9%	0.8%	5.7%	86.6%	13.4%
General Support	1.5%	0.1%	1.6%	0.7%	2.3%	70.1%	29.9%
Patient & Client Care	4.8%	0.2%	5.0%	2.3%	7.2%	68.6%	31.4%

March 2021

Muiriosa Foundation, Laois/Offaly absence by Staff Category	Certified absence	Self-certified absence	Non Covid-19 absence	Covid-19 absence	Total absence rate	% Non Covid-19 absence	% Covid-19 absence
Muiriosa Foundation, Laois/Offaly (CHO 8)	3.1%	0.1%	3.2%	1.6%	4.8%	66.4%	33.6%
Medical & Dental							
Nursing & Midwifery	6.2%	0.0%	6.2%	0.0%	6.2%	100.0%	0.0%
Health & Social Care Professionals	3.2%	0.0%	3.2%	1.7%	4.9%	65.9%	34.1%
Management & Administrative	1.9%	0.2%	2.1%	0.0%	2.1%	100.0%	0.0%
General Support	0.0%	0.0%	0.0%	0.9%	0.9%	0.0%	100.0%
Patient & Client Care	2.4%	0.1%	2.6%	2.3%	4.8%	52.8%	47.2%

March 2021

Muiriosa Foundation, Longford/Westmeath absence by Staff Category	Certified absence	Self-certified absence	Non Covid-19 absence	Covid-19 absence	Total absence rate	% Non Covid-19 absence	% Covid-19 absence
Muiriosa Foundation, Longford/Westmeath (CHO 8)	2.9%	0.4%	3.3%	0.1%	3.4%	97.3%	2.7%
Medical & Dental							
Nursing & Midwifery	8.5%	1.2%	9.7%	0.0%	9.7%	100.0%	0.0%
Health & Social Care Professionals	3.2%	0.4%	3.6%	0.1%	3.7%	98.3%	1.7%
Management & Administrative	0.3%	0.6%	1.0%	0.0%	1.0%	100.0%	0.0%
General Support	0.0%	0.0%	0.0%	0.0%	0.0%		
Patient & Client Care	2.5%	0.3%	2.7%	0.1%	2.9%	95.3%	4.7%

March 2021

Muiriosa Foundation, South Kildare absence by Staff Category	Certified absence	Self-certified absence	Non Covid-19 absence	Covid-19 absence	Total absence rate	% Non Covid-19 absence	% Covid-19 absence
Muiriosa Foundation, South Kildare (CHO 8)	2.9%	0.4%	3.3%	0.1%	3.4%	97.3%	2.7%
Medical & Dental							
Nursing & Midwifery	8.5%	1.2%	9.7%	0.0%	9.7%	100.0%	0.0%
Health & Social Care Professionals	3.2%	0.4%	3.6%	0.1%	3.7%	98.3%	1.7%
Management & Administrative	0.3%	0.6%	1.0%	0.0%	1.0%	100.0%	0.0%
General Support	0.0%	0.0%	0.0%	0.0%	0.0%		
Patient & Client Care	2.5%	0.3%	2.7%	0.1%	2.9%	95.3%	4.7%

March 2021

Peamount Hospital (Newcastle) absence by Staff Category	Certified absence	Self-certified absence	Non Covid-19 absence	Covid-19 absence	Total absence rate	% Non Covid-19 absence	% Covid-19 absence
Peamount Hospital (Newcastle) (CHO 7)	2.7%	0.7%	3.4%	2.5%	5.9%	58.1%	41.9%
Medical & Dental	0.0%	0.0%	0.0%	0.0%	0.0%		
Nursing & Midwifery	2.5%	0.7%	3.2%	1.6%	4.8%	66.4%	33.6%
Health & Social Care Professionals	0.7%	0.6%	1.3%	0.1%	1.4%	91.8%	8.2%
Management & Administrative	1.4%	0.1%	1.5%	1.3%	2.8%	53.6%	46.4%
General Support	5.7%	0.9%	6.6%	1.7%	8.3%	79.7%	20.3%
Patient & Client Care	2.9%	0.9%	3.8%	3.8%	7.6%	49.5%	50.5%

March 2021

Royal Hospital, Donnybrook, Dublin absence by Staff Category	Certified absence	Self-certified absence	Non Covid-19 absence	Covid-19 absence	Total absence rate	% Non Covid-19 absence	% Covid-19 absence
Royal Hospital, Donnybrook, Dublin (CHO 6)	4.9%	0.5%	5.4%	3.5%	8.9%	61.0%	39.0%
Medical & Dental	0.0%	0.0%	0.0%	0.0%	0.0%		
Nursing & Midwifery	3.3%	0.7%	4.0%	5.3%	9.3%	43.3%	56.7%
Health & Social Care Professionals	8.9%	0.6%	9.5%	0.4%	10.0%	95.8%	4.2%
Management & Administrative	0.0%	0.3%	0.3%	0.0%	0.3%	100.0%	0.0%
General Support	7.2%	0.5%	7.7%	2.8%	10.4%	73.2%	26.8%
Patient & Client Care	4.9%	0.4%	5.3%	3.9%	9.1%	57.7%	42.3%

March 2021

Stewart's Hospital, (Palmerstown) absence by Staff Category	Certified absence	Self-certified absence	Non Covid-19 absence	Covid-19 absence	Total absence rate	% Non Covid-19 absence	% Covid-19 absence
Stewart's Hospital, (Palmerstown) (CHO 7)	4.2%	0.6%	4.8%	0.2%	5.0%	96.6%	3.4%
Medical & Dental	0.0%	0.0%	0.0%	0.0%	0.0%		
Nursing & Midwifery	4.8%	0.7%	5.5%	0.0%	5.5%	100.0%	0.0%
Health & Social Care Professionals	4.0%	0.3%	4.3%	0.0%	4.3%	100.0%	0.0%
Management & Administrative	3.7%	0.3%	4.0%	0.0%	4.0%	100.0%	0.0%
General Support	4.1%	0.5%	4.6%	0.0%	4.6%	100.0%	0.0%
Patient & Client Care	4.1%	0.7%	4.8%	0.2%	5.1%	95.2%	4.8%

March 2021

St. John of God, Drumcar absence by Staff Category	Certified absence	Self-certified absence	Non Covid-19 absence	Covid-19 absence	Total absence rate	% Non Covid-19 absence	% Covid-19 absence
St. John of God, Drumcar (CHO 8)	3.5%	0.5%	4.0%	2.6%	6.6%	60.5%	39.5%
Medical & Dental	0.0%	0.0%	0.0%	0.0%	0.0%		
Nursing & Midwifery	0.4%	0.4%	0.8%	3.1%	3.8%	20.6%	79.4%
Health & Social Care Professionals	9.0%	0.4%	9.4%	0.0%	9.4%	100.0%	0.0%
Management & Administrative	0.3%	0.0%	0.3%	2.1%	2.4%	12.8%	87.2%
General Support	9.2%	0.7%	9.9%	0.0%	9.9%	100.0%	0.0%
Patient & Client Care	3.9%	0.6%	4.5%	3.2%	7.7%	58.5%	41.5%

March 2021

St. John of God (IDS) absence by Staff Category	Certified absence	Self-certified absence	Non Covid-19 absence	Covid-19 absence	Total absence rate	% Non Covid-19 absence	% Covid-19 absence
St. John of God (IDS) (CHO 6)	2.4%	0.8%	3.2%	1.0%	4.2%	76.5%	23.5%
Medical & Dental	0.0%	0.0%	0.0%	0.0%	0.0%		
Nursing & Midwifery	3.7%	0.6%	4.3%	1.3%	5.7%	76.4%	23.6%
Health & Social Care Professionals	2.6%	1.1%	3.6%	1.1%	4.7%	76.3%	23.7%
Management & Administrative	0.1%	0.3%	0.4%	0.0%	0.4%	100.0%	0.0%
General Support	5.8%	0.1%	6.0%	0.0%	6.0%	100.0%	0.0%
Patient & Client Care	2.3%	0.7%	3.0%	1.2%	4.2%	72.2%	27.8%

March 2021

St. John of God, Kerry absence by Staff Category	Certified absence	Self-certified absence	Non Covid-19 absence	Covid-19 absence	Total absence rate	% Non Covid-19 absence	% Covid-19 absence
St. John of God, Kerry (CHO 4)	2.8%	0.0%	2.8%	0.5%	3.2%	85.8%	14.2%
Medical & Dental							
Nursing & Midwifery	4.4%	0.0%	4.4%	0.2%	4.7%	95.1%	4.9%
Health & Social Care Professionals	0.0%	0.0%	0.0%	1.9%	1.9%	0.0%	100.0%
Management & Administrative	0.0%	0.0%	0.0%	0.0%	0.0%		#DIV/0
General Support	2.6%	0.0%	2.6%	0.2%	2.8%	92.6%	7.4%
Patient & Client Care	3.3%	0.0%	3.3%	0.2%	3.4%	95.5%	4.5%

March 2021

St. John of God Liffey Services absence by Staff Category	Certified absence	Self-certified absence	Non Covid-19 absence	Covid-19 absence	Total absence rate	% Non Covid-19 absence	% Covid-19 absence
St. John of God Liffey Services (CHO 7)	3.0%	0.5%	3.5%	1.9%	5.4%	65.4%	34.6%
Medical & Dental	0.0%	0.0%	0.0%	0.0%	0.0%		
Nursing & Midwifery	7.0%	0.6%	7.6%	2.3%	9.9%	76.5%	23.5%
Health & Social Care Professionals	2.9%	0.4%	3.4%	1.6%	4.9%	68.2%	31.8%
Management & Administrative	2.5%	0.1%	2.6%	0.0%	2.6%	100.0%	0.0%
General Support	2.3%	0.5%	2.8%	0.2%	3.1%	92.0%	8.0%
Patient & Client Care	1.9%	0.5%	2.4%	2.4%	4.8%	50.1%	49.9%

March 2021

St. Michael's House, Dublin absence by Staff Category	Certified absence	Self-certified absence	Non Covid-19 absence	Covid-19 absence	Total absence rate	% Non Covid-19 absence	% Covid-19 absence
St. Michael's House, Dublin (CHO 9)	4.4%	0.1%	4.5%	0.6%	5.1%	88.6%	11.4%
Medical & Dental	7.2%	0.0%	7.2%	0.0%	7.2%	100.0%	0.0%
Nursing & Midwifery	2.3%	0.2%	2.5%	0.3%	2.8%	88.2%	11.8%
Health & Social Care Professionals	4.4%	0.1%	4.5%	0.5%	5.0%	90.2%	9.8%
Management & Administrative	1.5%	0.1%	1.6%	0.1%	1.7%	93.5%	6.5%
General Support	9.5%	0.1%	9.6%	2.7%	12.3%	77.7%	22.3%
Patient & Client Care	6.1%	0.1%	6.2%	0.8%	6.9%	89.1%	10.9%

March 2021

St. Patrick's, Kilkenny absence by Staff Category	Certified absence	Self-certified absence	Non Covid-19 absence	Covid-19 absence	Total absence rate	% Non Covid-19 absence	% Covid-19 absence
St. Patrick's, Kilkenny (CHO 5)	5.7%	0.7%	6.4%	0.3%	6.7%	96.1%	3.9%
Medical & Dental							
Nursing & Midwifery	2.3%	0.6%	2.9%	0.5%	3.4%	85.2%	14.8%
Health & Social Care Professionals	8.0%	0.8%	8.8%	0.0%	8.8%	100.0%	0.0%
Management & Administrative	6.0%	0.8%	6.7%	0.0%	6.7%	100.0%	0.0%
General Support	16.3%	1.6%	17.9%	0.0%	17.9%	100.0%	0.0%
Patient & Client Care	5.8%	0.7%	6.5%	0.3%	6.8%	95.7%	4.3%

March 2021

Sunbeam House Services absence by Staff Category	Certified absence	Self-certified absence	Non Covid-19 absence	Covid-19 absence	Total absence rate	% Non Covid-19 absence	% Covid-19 absence
Sunbeam House Services (CHO 6)	2.8%	0.5%	3.3%	0.7%	4.0%	82.8%	17.2%
Medical & Dental							
Nursing & Midwifery	3.7%	0.6%	4.3%	1.2%	5.6%	77.9%	22.1%
Health & Social Care Professionals	3.7%	0.4%	4.1%	0.2%	4.3%	95.2%	4.8%
Management & Administrative	1.6%	0.3%	1.9%	1.4%	3.3%	58.8%	41.2%
General Support	0.0%	1.0%	1.0%	0.0%	1.0%	100.0%	0.0%
Patient & Client Care	2.1%	0.5%	2.6%	1.0%	3.7%	71.8%	28.2%

Social Care

Year/ month	Medical & Dental	Nursing & Midwifery	Health & Social Care Professionals	Management & Administrative	General Support	Patient & Client Care	Certified absence	Self-certified absence	Non Covid-19 absence	Covid-19 absence	Total absence rate
2021	1.4%	7.9%	6.3%	3.2%	6.9%	8.1%	4.3%	0.5%	4.8%	2.5%	7.3%
Mar 2021	2.2%	5.7%	4.9%	3.1%	5.3%	6.1%	4.0%	0.5%	4.5%	1.0%	5.5%
Feb 2021	1.3%	7.5%	6.1%	2.9%	6.1%	7.7%	4.4%	0.5%	4.9%	2.0%	6.9%
Jan 2021	0.9%	10.5%	8.1%	3.5%	9.5%	10.5%	4.6%	0.3%	4.9%	4.5%	9.4%
2020	3.1%	7.3%	5.0%	2.9%	6.6%	6.8%	4.5%	0.4%	4.9%	1.4%	6.2%
Dec 2020	2.6%	6.5%	4.1%	3.1%	4.9%	6.2%	4.2%	0.4%	4.6%	1.0%	5.5%
Nov 2020	3.6%	5.7%	3.8%	2.9%	5.5%	5.7%	4.0%	0.3%	4.3%	0.8%	5.1%
Oct 2020	3.8%	7.0%	5.0%	2.6%	6.8%	6.7%	4.2%	0.4%	4.6%	1.5%	6.1%
Sep 2020	3.0%	7.0%	4.7%	2.3%	6.1%	6.2%	4.3%	0.4%	4.6%	1.1%	5.8%
Aug 2020	3.7%	6.3%	4.4%	2.5%	4.8%	5.9%	4.4%	0.3%	4.7%	0.6%	5.3%
Jul 2020	1.1%	6.1%	4.0%	2.1%	5.9%	5.9%	4.4%	0.4%	4.8%	0.5%	5.3%
Jun 2020	0.9%	6.0%	3.7%	1.9%	6.1%	5.5%	4.0%	0.3%	4.3%	0.7%	5.0%
May 2020	2.1%	8.7%	5.6%	2.6%	7.6%	7.9%	4.5%	0.2%	4.7%	2.5%	7.2%
Apr 2020	2.6%	13.6%	8.3%	3.4%	12.8%	12.0%	5.2%	0.4%	5.7%	5.3%	10.9%
Mar 2020	3.1%	9.0%	7.1%	4.7%	7.9%	8.5%	5.1%	0.4%	5.5%	2.6%	8.0%
Feb 2020	4.3%	5.6%	4.4%	3.5%	5.0%	5.3%	4.6%	0.5%	5.0%		5.0%
Jan 2020	4.6%	6.0%	5.0%	3.5%	6.2%	5.9%	5.0%	0.6%	5.6%		5.6%
2019	1.3%	5.6%	4.2%	3.3%	4.8%	5.2%	4.4%	0.5%	4.9%		4.9%
Dec 2019	3.7%	6.0%	4.7%	3.5%	5.4%	4.8%	4.4%	0.5%	4.9%		4.9%
Nov 2019	1.5%	6.1%	3.8%	3.0%	5.0%	5.4%	4.5%	0.5%	5.0%		5.0%
Oct 2019	0.5%	6.0%	4.2%	2.9%	5.3%	5.7%	4.7%	0.5%	5.2%		5.2%
Sep 2019	1.3%	5.6%	4.5%	3.5%	5.3%	5.2%	4.5%	0.5%	4.9%		4.9%
Aug 2019	1.9%	5.7%	4.6%	3.4%	4.5%	5.4%	4.7%	0.4%	5.0%		5.0%
Jul 2019	1.5%	5.3%	4.1%	3.5%	4.8%	5.1%	4.5%	0.3%	4.8%		4.8%
Jun 2019	2.5%	5.4%	3.9%	2.8%	4.1%	5.3%	4.4%	0.4%	4.8%		4.8%
May 2019	3.9%	5.8%	4.3%	2.7%	4.3%	5.2%	4.4%	0.5%	4.9%		4.9%
Apr 2019	0.1%	5.5%	3.9%	3.1%	4.9%	5.2%	4.3%	0.4%	4.7%		4.7%
Mar 2019	0.3%	5.0%	3.7%	3.5%	4.7%	4.9%	4.1%	0.4%	4.5%		4.5%
Feb 2019	1.0%	5.6%	3.9%	3.9%	4.7%	4.9%	4.3%	0.5%	4.7%		4.7%
Jan 2019	0.3%	5.6%	4.5%	4.2%	5.3%	5.5%	4.6%	0.5%	5.2%		5.2%
2018	1.9%	4.6%	4.2%	3.4%	4.2%	4.8%	4.1%	0.4%	4.5%		4.5%

Social Care

Year/ month	CHO 1	CHO 2	CHO 3	CHO 4	CHO 5	CHO 6	CHO 7	CHO 8	CHO 9	other Comm.	Community Services absence rate	Certified absence	Self-certified absence	Non Covid-19 absence	Covid-19 absence	Total absence rate
2021	9.3%	7.6%	6.4%	7.4%	8.8%	6.5%	7.2%	7.5%	6.0%		7.3%	4.3%	0.5%	4.8%	2.5%	7.3%
Mar 2021	7.1%	6.2%	4.5%	5.4%	6.4%	4.5%	5.5%	5.9%	4.7%		5.5%	4.0%	0.5%	4.5%	1.0%	5.48%
Feb 2021	8.5%	7.6%	5.9%	6.7%	9.0%	6.2%	6.6%	7.7%	5.6%		6.9%	4.4%	0.5%	4.9%	2.0%	6.89%
Jan 2021	12.3%	9.0%	8.8%	10.1%	11.3%	8.9%	9.6%	8.7%	7.8%		9.4%	4.6%	0.3%	4.9%	4.5%	9.40%
2020	7.1%	5.6%	5.2%	6.2%	6.6%	4.7%	7.3%	6.7%	5.8%	0.0%	6.2%	4.5%	0.4%	4.9%	1.4%	6.2%
Dec 2020	7.6%	5.7%	4.7%	5.4%	6.9%	3.8%	6.1%	5.6%	4.5%	0.3%	5.5%	4.2%	0.4%	4.6%	1.0%	5.51%
Nov 2020	7.2%	5.2%	4.9%	5.0%	5.5%	3.5%	5.5%	5.4%	4.1%		5.1%	4.0%	0.3%	4.3%	0.8%	5.09%
Oct 2020	8.6%	5.8%	5.3%	6.5%	5.7%	3.7%	7.2%	6.5%	5.1%		6.1%	4.2%	0.4%	4.6%	1.5%	6.08%
Sep 2020	7.6%	5.3%	5.0%	5.3%	5.7%	4.1%	6.9%	6.1%	5.3%		5.8%	4.3%	0.4%	4.6%	1.1%	5.76%
Aug 2020	7.0%	4.1%	5.6%	5.3%	5.5%	4.0%	5.7%	5.7%	4.8%		5.3%	4.4%	0.3%	4.7%	0.6%	5.32%
Jul 2020	6.1%	4.1%	3.9%	4.6%	6.3%	4.4%	6.1%	6.2%	5.2%		5.3%	4.4%	0.4%	4.8%	0.5%	5.26%
Jun 2020	5.6%	4.3%	4.8%	4.9%	5.4%	3.7%	5.5%	5.4%	4.7%		5.0%	4.0%	0.3%	4.3%	0.7%	5.00%
May 2020	6.2%	6.2%	5.9%	7.7%	6.9%	5.4%	9.2%	8.4%	6.5%		7.2%	4.5%	0.2%	4.7%	2.5%	7.19%
Apr 2020	8.8%	9.0%	6.0%	11.9%	10.2%	10.9%	15.8%	12.1%	9.9%		10.9%	5.2%	0.4%	5.7%	5.3%	10.91%
Mar 2020	9.2%	6.8%	6.8%	8.1%	7.7%	6.0%	9.6%	7.2%	8.5%		8.0%	5.1%	0.4%	5.5%	2.6%	8.01%
Feb 2020	5.5%	5.3%	4.4%	4.9%	6.0%	3.7%	4.9%	5.3%	5.2%		5.0%	4.6%	0.5%	5.0%		5.04%
Jan 2020	6.2%	6.3%	5.1%	5.3%	6.9%	4.0%	5.5%	6.4%	5.2%		5.6%	5.0%	0.6%	5.6%		5.59%
2019	7.2%	4.8%	4.4%	4.9%	5.4%	4.0%	4.6%	5.0%	4.6%		4.9%	4.4%	0.5%	4.9%		4.9%
Dec 2019	7.1%	5.0%	4.0%	5.3%	7.0%	3.0%	4.9%	5.0%	5.0%		4.9%	4.4%	0.5%	4.9%		4.94%
Nov 2019	6.3%	5.5%	4.8%	5.4%	6.4%	3.4%	4.5%	4.9%	4.6%		5.0%	4.5%	0.5%	5.0%		5.01%
Oct 2019	6.3%	5.8%	4.8%	5.6%	5.5%	5.0%	5.1%	5.3%	4.6%		5.2%	4.7%	0.5%	5.2%		5.24%
Sep 2019	6.4%	4.9%	4.2%	5.2%	5.5%	4.2%	4.4%	4.9%	4.8%		4.9%	4.5%	0.5%	4.9%		4.93%
Aug 2019	8.1%	5.0%	4.4%	4.7%	5.0%	5.0%	4.3%	5.5%	4.7%		5.0%	4.7%	0.4%	5.0%		5.04%
Jul 2019	7.6%	3.9%	4.3%	4.7%	4.9%	4.2%	4.2%	5.3%	4.5%		4.8%	4.5%	0.3%	4.8%		4.78%
Jun 2019	7.1%	4.1%	4.5%	4.4%	4.7%	4.3%	5.1%	5.0%	4.4%		4.8%	4.4%	0.4%	4.8%		4.82%
May 2019	6.9%	4.4%	4.2%	4.5%	5.2%	4.3%	5.1%	5.2%	4.4%		4.9%	4.4%	0.5%	4.9%		4.89%
Apr 2019	6.7%	4.7%	4.6%	4.7%	5.5%	4.4%	4.4%	4.3%	4.0%		4.7%	4.3%	0.4%	4.7%		4.69%
Mar 2019	7.4%	4.4%	4.1%	4.2%	4.6%	3.4%	4.3%	4.9%	4.0%		4.5%	4.1%	0.4%	4.5%		4.54%
Feb 2019	7.9%	4.5%	4.4%	4.5%	4.9%	3.5%	4.2%	4.5%	4.8%		4.7%	4.3%	0.5%	4.7%		4.73%
Jan 2019	8.3%	4.8%	4.7%	5.4%	5.2%	3.8%	4.7%	5.2%	4.9%		5.2%	4.6%	0.5%	5.2%		5.18%

