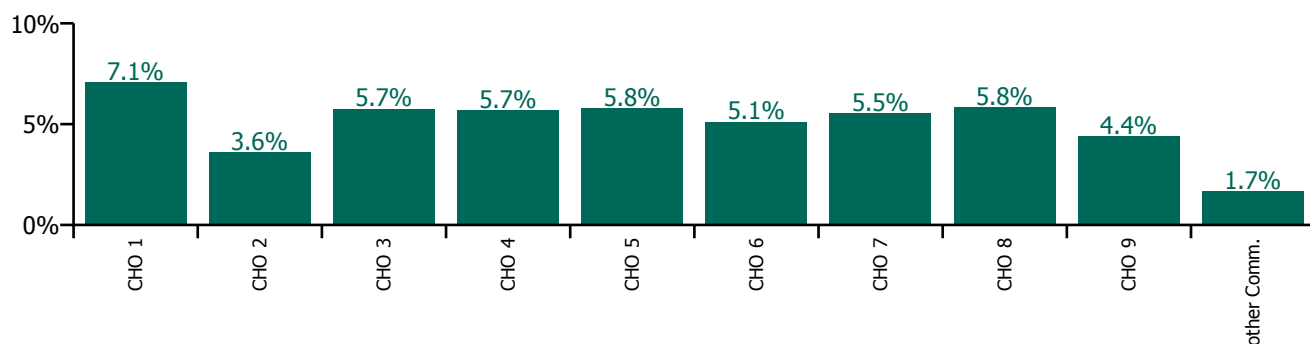


May 2021

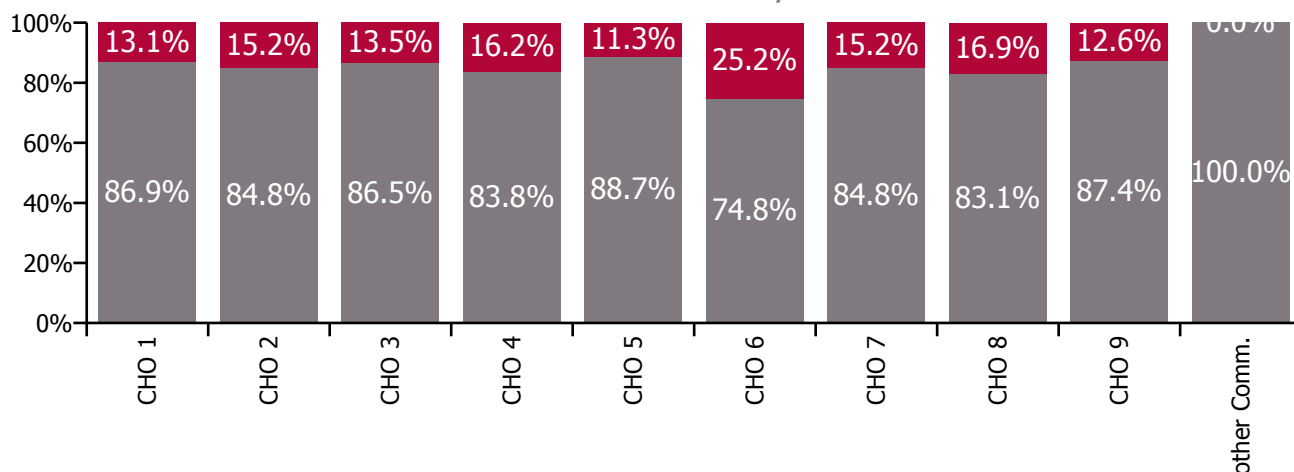
Health Service Absence Rate - by Staff Category: May 2021	Certified absence	Self-certified absence	Non Covid-19 absence	Covid-19 absence	Total absence rate	% Non Covid-19 absence	% Covid-19 absence
Social Care	4.2%	0.4%	4.6%	0.8%	5.4%	85.0%	15.0%
Medical & Dental	1.1%	0.0%	1.2%	0.0%	1.2%	100.0%	0.0%
Nursing & Midwifery	4.2%	0.5%	4.6%	1.0%	5.7%	82.2%	17.8%
Health & Social Care Professionals	3.1%	0.3%	3.4%	0.7%	4.0%	83.6%	16.4%
Management & Administrative	2.6%	0.2%	2.8%	0.1%	2.9%	95.7%	4.3%
General Support	4.7%	0.3%	5.0%	0.5%	5.5%	91.1%	8.9%
Patient & Client Care	4.8%	0.5%	5.2%	0.9%	6.1%	85.2%	14.8%

Health Service Absence Rate - Care Group by CHO: May 2021	Certified absence	Self-certified absence	Non Covid-19 absence	Covid-19 absence	Total absence rate	% Non Covid-19 absence	% Covid-19 absence
Social Care	4.2%	0.4%	4.6%	0.8%	5.4%	85.0%	15.0%
CHO 1	5.7%	0.4%	6.1%	0.9%	7.1%	86.9%	13.1%
CHO 2	3.0%	0.1%	3.1%	0.5%	3.6%	84.8%	15.2%
CHO 3	4.6%	0.3%	5.0%	0.8%	5.7%	86.5%	13.5%
CHO 4	3.9%	0.8%	4.8%	0.9%	5.7%	83.8%	16.2%
CHO 5	4.7%	0.5%	5.1%	0.7%	5.8%	88.7%	11.3%
CHO 6	3.4%	0.4%	3.8%	1.3%	5.1%	74.8%	25.2%
CHO 7	4.2%	0.5%	4.7%	0.8%	5.5%	84.8%	15.2%
CHO 8	4.5%	0.3%	4.8%	1.0%	5.8%	83.1%	16.9%
CHO 9	3.5%	0.3%	3.8%	0.6%	4.4%	87.4%	12.6%
Other Community Services	1.4%	0.2%	1.7%	0.0%	1.7%	100.0%	0.0%

Total absence rate

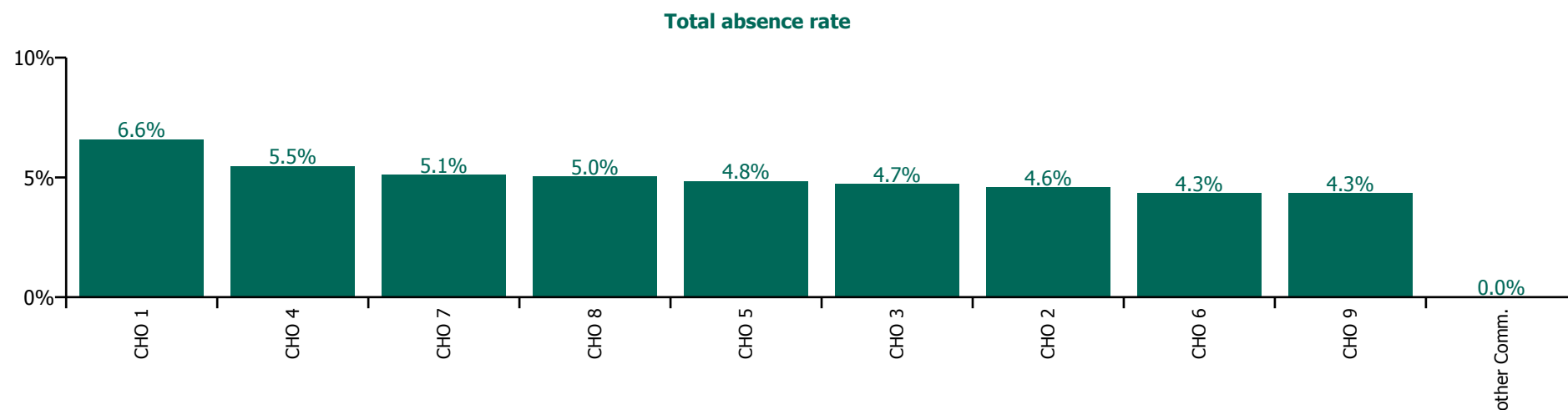


% of Absence Non Covid-19 / Covid-19

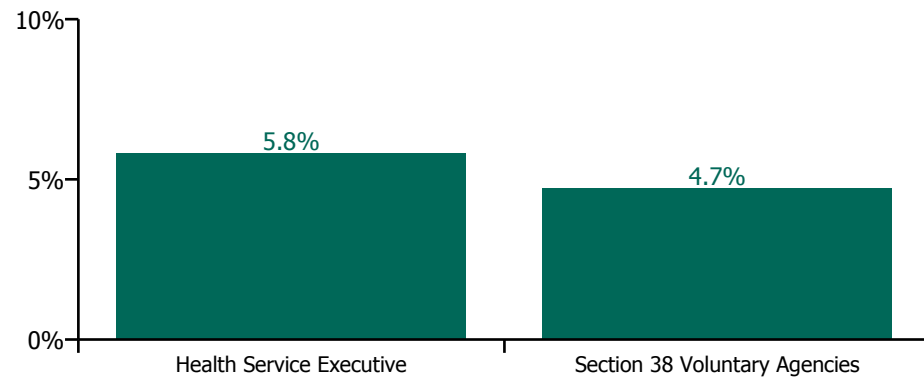


May 2021

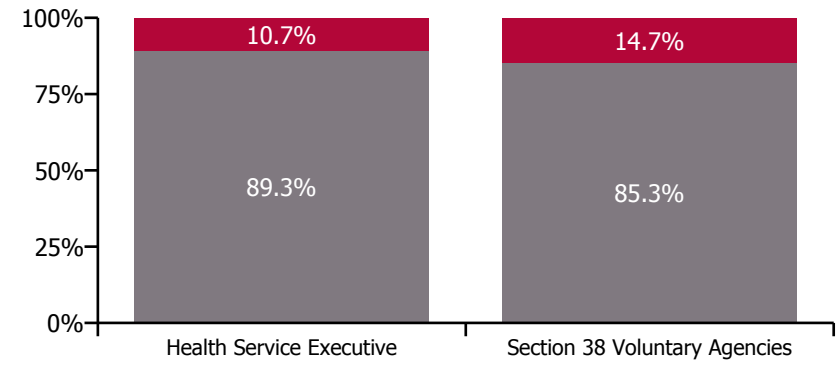
Health Service Absence Rate - by Hospital Group & Staff Category: May 2021	Medical & Dental	Nursing & Midwifery	Health & Social Care Professionals	Management & Administrative	General Support	Patient & Client Care	Certified absence	Self-certified absence	Non Covid-19 absence	Covid-19 absence	Total absence rate
Social Care	2.5%	5.2%	4.1%	2.4%	4.5%	5.7%	3.9%	0.4%	4.3%	0.7%	5.0%
CHO 1	0.0%	7.3%	3.2%	5.2%	1.6%	7.0%	5.7%	0.4%	6.1%	0.4%	6.6%
CHO 2	12.0%	2.6%	4.7%	4.3%	2.8%	5.3%	3.9%	0.1%	4.0%	0.5%	4.6%
CHO 3	0.0%	4.3%	4.9%	0.9%	7.5%	5.0%	3.5%	0.3%	3.8%	0.9%	4.7%
CHO 4		5.1%	4.3%	3.9%	4.8%	6.2%	4.1%	1.0%	5.1%	0.4%	5.5%
CHO 5	0.0%	5.1%	5.8%	2.6%	0.0%	4.9%	3.6%	0.4%	4.0%	0.8%	4.8%
CHO 6	0.8%	5.4%	3.9%	1.0%	3.5%	5.5%	2.9%	0.4%	3.4%	1.0%	4.3%
CHO 7	0.0%	7.0%	3.9%	1.5%	5.9%	5.4%	3.9%	0.5%	4.3%	0.8%	5.1%
CHO 8	0.0%	6.5%	3.8%	2.2%	4.4%	5.4%	3.9%	0.3%	4.1%	0.9%	5.0%
CHO 9	3.6%	3.5%	3.8%	1.9%	3.7%	6.3%	3.6%	0.2%	3.8%	0.5%	4.3%
Other Community Services				0.0%			0.0%	0.0%	0.0%	0.0%	0.0%



Total absence rate



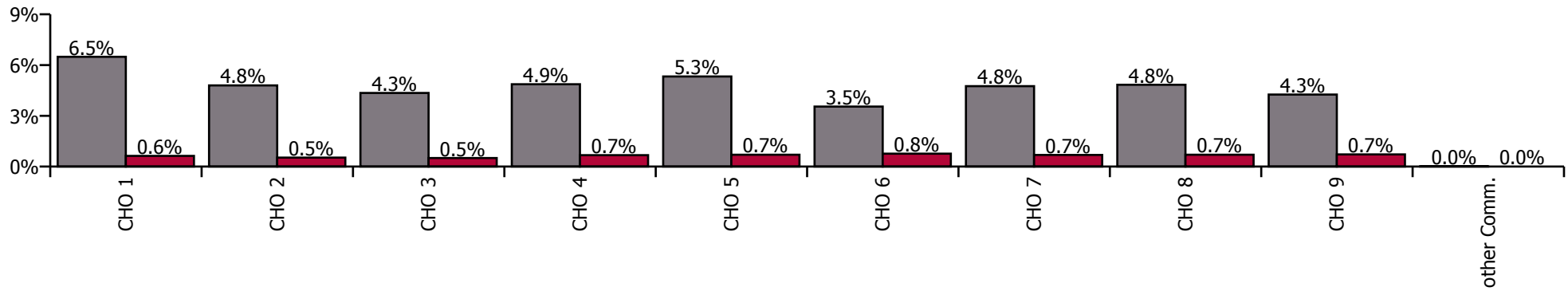
Non Covid-19 & Covid-19 Absence



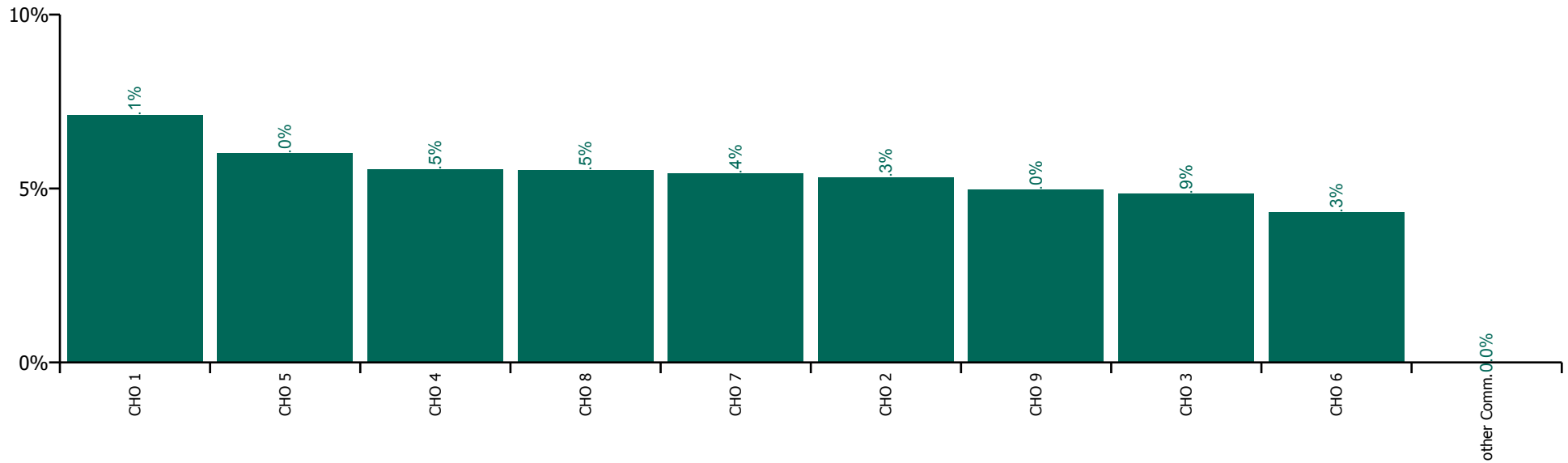
May 2021

Health Service Absence Rate by Hospital: May 2021	Medical & Dental	Nursing & Midwifery	Health & Social Care Professionals	Management & Administrative	General Support	Patient & Client Care	Certified absence	Self-certified absence	Non Covid-19 absence	Covid-19 absence	Total absence rate
Social Care	2.2%	6.1%	4.6%	3.1%	5.3%	5.8%	4.3%	0.4%	4.7%	0.7%	5.4%
Health Service Executive	0.2%	8.4%	3.6%	2.9%	4.4%	7.4%	6.2%	0.3%	6.5%	0.6%	7.1%
CHO 1	0.2%	8.4%	3.6%	2.9%	4.4%	7.4%	6.2%	0.3%	6.5%	0.6%	7.1%
Health Service Executive	1.6%	8.3%	4.1%	1.2%	1.0%	5.5%	4.6%	0.3%	4.8%	0.6%	5.4%
Section 38 Voluntary Agencies	2.8%	5.4%	5.0%	3.2%	4.7%	5.8%	4.5%	0.3%	4.8%	0.5%	5.3%
CHO 2	2.5%	5.9%	4.9%	2.9%	4.3%	5.7%	4.5%	0.3%	4.8%	0.5%	5.3%
Health Service Executive			3.4%	3.9%	22.3%	5.7%	4.2%	0.3%	4.5%	0.5%	5.0%
Section 38 Voluntary Agencies	1.7%	5.6%	4.6%	2.6%	4.8%	4.8%	4.1%	0.3%	4.3%	0.5%	4.9%
CHO 3	1.7%	5.6%	4.5%	3.0%	5.6%	4.8%	4.1%	0.3%	4.3%	0.5%	4.9%
Health Service Executive	7.0%	5.0%	3.9%	1.9%	4.1%	4.6%	3.2%	0.6%	3.7%	0.5%	4.2%
Section 38 Voluntary Agencies	0.0%	6.7%	4.6%	3.1%	5.3%	6.0%	4.3%	0.7%	5.0%	0.7%	5.7%
CHO 4	6.8%	6.5%	4.5%	2.9%	5.1%	5.9%	4.2%	0.7%	4.9%	0.7%	5.5%
Health Service Executive	0.0%	7.5%	5.5%	5.4%	5.1%	8.2%	5.7%	0.5%	6.2%	0.7%	6.9%
Section 38 Voluntary Agencies	18.1%	6.7%	6.2%	4.5%	6.8%	5.7%	4.6%	0.6%	5.1%	0.7%	5.8%
CHO 5	12.9%	6.9%	6.0%	4.7%	6.6%	5.9%	4.8%	0.6%	5.3%	0.7%	6.0%
Health Service Executive	1.4%	6.3%	4.9%	3.0%	2.0%	9.0%	3.6%	0.5%	4.1%	2.6%	6.6%
Section 38 Voluntary Agencies	0.0%	4.4%	4.3%	2.3%	4.9%	4.4%	3.0%	0.5%	3.5%	0.7%	4.2%
CHO 6	0.7%	4.7%	4.3%	2.3%	4.8%	4.8%	3.0%	0.5%	3.5%	0.8%	4.3%
Health Service Executive		0.0%	5.0%	5.1%		4.4%	4.2%	0.3%	4.6%	0.4%	5.0%
Section 38 Voluntary Agencies	1.3%	5.9%	4.3%	3.0%	5.4%	6.1%	4.3%	0.4%	4.8%	0.7%	5.4%
CHO 7	1.3%	5.9%	4.4%	3.1%	5.4%	6.0%	4.3%	0.4%	4.8%	0.7%	5.4%
Health Service Executive	0.2%	10.1%	6.2%	5.5%	10.9%	10.9%	7.5%	0.5%	8.0%	1.2%	9.2%
Section 38 Voluntary Agencies	0.2%	4.5%	4.7%	2.8%	5.3%	4.8%	3.7%	0.3%	4.1%	0.6%	4.6%
CHO 8	0.2%	5.8%	4.9%	3.8%	5.8%	6.0%	4.5%	0.4%	4.8%	0.7%	5.5%
Health Service Executive	1.0%	8.2%	3.9%	2.9%	9.6%	8.2%	6.0%	0.4%	6.4%	1.0%	7.4%
Section 38 Voluntary Agencies	2.6%	4.6%	4.5%	3.0%	5.4%	5.4%	3.7%	0.3%	4.0%	0.7%	4.7%
CHO 9	2.5%	5.3%	4.5%	3.0%	5.5%	5.7%	4.0%	0.3%	4.3%	0.7%	5.0%
Other Community Services				0.0%			0.0%	0.0%	0.0%	0.0%	0.0%

Non Covid-19 / Covid-19 absence rates



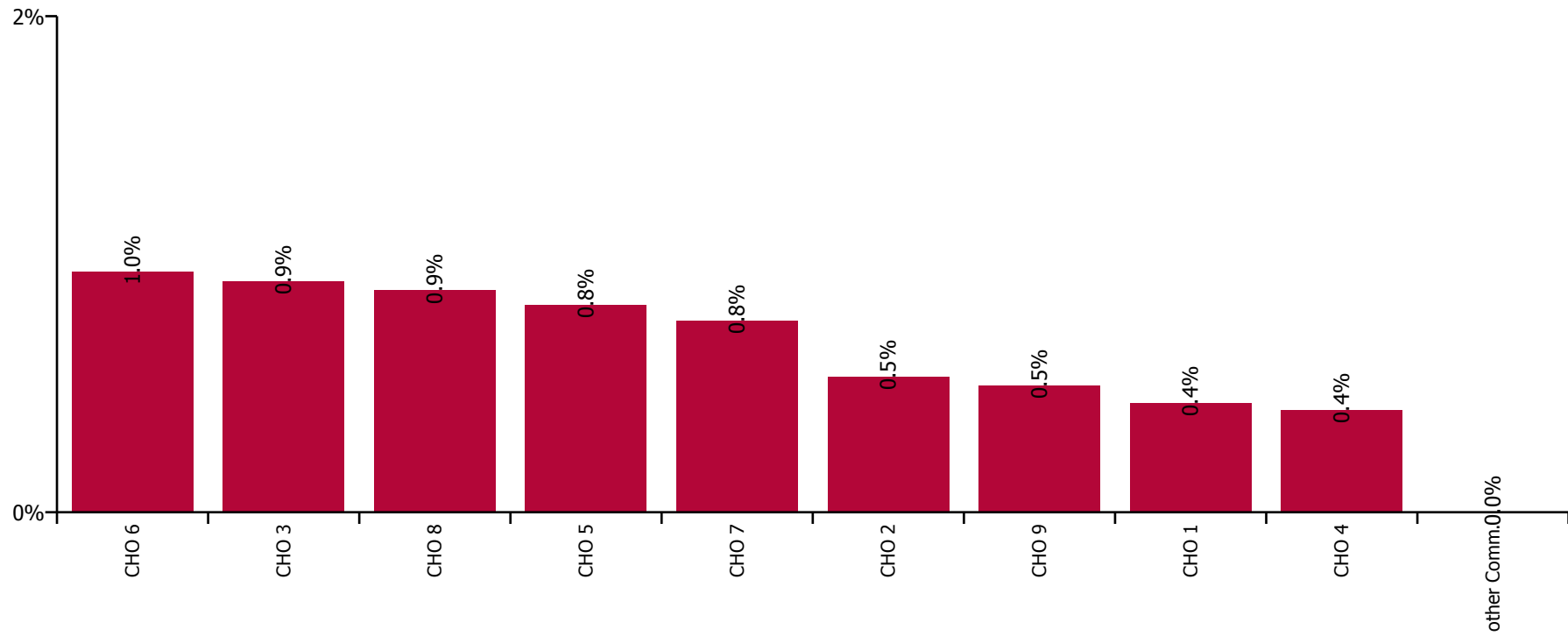
Total absence rate



May 2021

Health Service Covid-19 Absence Rate - by Staff Category & Hospital: May 2021	Medical & Dental	Nursing & Midwifery	Health & Social Care Professionals	Management & Administrative	General Support	Patient & Client Care	Covid-19 absence	Non Covid-19 absence	Total absence rate
Social Care	0.0%	0.6%	0.7%	2.4%	0.6%	0.8%	0.7%	4.3%	5.0%
Health Service Executive	0.0%	0.4%	0.2%	5.2%	1.0%	0.5%	0.4%	6.1%	6.6%
CHO 1	0.0%	0.4%	0.2%	5.2%	1.0%	0.5%	0.4%	6.1%	6.6%
Health Service Executive	0.0%	0.0%	0.0%	0.0%	0.0%	0.0%	0.0%	2.0%	2.0%
Section 38 Voluntary Agencies	0.0%	0.1%	1.0%	5.5%	0.2%	0.7%	0.6%	4.4%	5.0%
CHO 2	0.0%	0.1%	0.9%	4.3%	0.2%	0.6%	0.5%	4.0%	4.6%
Health Service Executive			0.2%	0.7%	0.0%	0.0%	0.1%	3.6%	3.7%
Section 38 Voluntary Agencies	0.0%	0.8%	0.9%	1.1%	2.6%	1.0%	1.0%	3.8%	4.8%
CHO 3	0.0%	0.8%	0.8%	0.9%	2.4%	1.0%	0.9%	3.8%	4.7%
Health Service Executive			0.0%	15.2%	0.0%	0.0%	0.0%	6.9%	6.9%
Section 38 Voluntary Agencies		0.3%	0.5%	3.2%	0.0%	0.5%	0.4%	5.0%	5.5%
CHO 4		0.3%	0.4%	3.9%	0.0%	0.5%	0.4%	5.1%	5.5%
Health Service Executive	0.0%	0.0%	0.4%	1.2%	0.0%	1.1%	0.4%	3.5%	4.0%
Section 38 Voluntary Agencies	0.0%	1.1%	1.9%	3.5%	0.0%	0.9%	1.0%	4.2%	5.1%
CHO 5	0.0%	0.7%	1.3%	2.6%	0.0%	0.9%	0.8%	4.0%	4.8%
Health Service Executive	0.0%	2.1%	2.8%	1.5%	0.0%	2.1%	1.9%	4.0%	5.9%
Section 38 Voluntary Agencies	0.0%	1.4%	0.8%	0.9%	0.0%	0.8%	0.8%	3.2%	4.0%
CHO 6	0.0%	1.6%	0.9%	1.0%	0.0%	1.1%	1.0%	3.4%	4.3%
Health Service Executive		0.0%	0.0%	2.7%		0.0%	0.7%	1.1%	1.9%
Section 38 Voluntary Agencies	0.0%	1.2%	1.0%	1.3%	0.4%	0.7%	0.8%	4.5%	5.2%
CHO 7	0.0%	1.2%	0.9%	1.5%	0.4%	0.7%	0.8%	4.3%	5.1%
Health Service Executive	0.0%	0.1%	0.9%	4.4%	10.3%	2.8%	1.5%	5.8%	7.4%
Section 38 Voluntary Agencies	0.0%	0.8%	0.6%	0.2%	0.0%	0.8%	0.7%	3.6%	4.2%
CHO 8	0.0%	0.6%	0.6%	2.2%	1.4%	1.3%	0.9%	4.1%	5.0%
Health Service Executive	0.0%	0.2%	0.0%	3.3%	0.0%	0.2%	0.2%	5.9%	6.1%
Section 38 Voluntary Agencies	0.0%	0.5%	0.5%	1.6%	0.4%	0.9%	0.6%	3.5%	4.0%
CHO 9	0.0%	0.4%	0.5%	1.9%	0.4%	0.8%	0.5%	3.8%	4.3%
Other Community Services				0.0%			0.0%	0.0%	0.0%

Covid-19 absence rate



May 2021

Health Service Absence Rate - by Staff Category: May 2021	Certified absence	Self-certified absence	Non Covid-19 absence	Covid-19 absence	Total absence rate	% Non Covid-19 absence	% Covid-19 absence
HSE Social Care CHO 1	5.7%	0.4%	6.1%	0.9%	7.1%	86.9%	13.1%
Medical & Dental	0.0%	0.0%	0.0%	0.0%	0.0%		
Nursing & Midwifery	5.4%	0.6%	6.0%	1.0%	7.0%	85.6%	14.4%
Health & Social Care Professionals	2.3%	0.2%	2.5%	0.2%	2.7%	93.3%	6.7%
Management & Administrative	5.4%	0.1%	5.5%	0.3%	5.8%	94.4%	5.6%
General Support	7.3%	0.1%	7.5%	0.5%	7.9%	94.1%	5.9%
Patient & Client Care	6.1%	0.4%	6.5%	1.1%	7.6%	85.7%	14.3%

May 2021

Health Service Absence Rate - by Staff Category: May 2021	Certified absence	Self-certified absence	Non Covid-19 absence	Covid-19 absence	Total absence rate	% Non Covid-19 absence	% Covid-19 absence
HSE Social Care CHO 2	3.0%	0.1%	3.1%	0.5%	3.6%	84.8%	15.2%
Medical & Dental	5.8%	0.0%	5.8%	0.0%	5.8%	100.0%	0.0%
Nursing & Midwifery	2.2%	0.0%	2.2%	0.6%	2.8%	79.0%	21.0%
Health & Social Care Professionals	3.3%	0.1%	3.4%	0.8%	4.2%	80.6%	19.4%
Management & Administrative	3.6%	0.0%	3.6%	0.0%	3.6%	100.0%	0.0%
General Support	1.4%	0.0%	1.4%	0.1%	1.4%	94.9%	5.1%
Patient & Client Care	3.3%	0.1%	3.5%	0.6%	4.0%	85.7%	14.3%

May 2021

Health Service Absence Rate - by Staff Category: May 2021	Certified absence	Self-certified absence	Non Covid-19 absence	Covid-19 absence	Total absence rate	% Non Covid-19 absence	% Covid-19 absence
HSE Social Care CHO 3	4.6%	0.3%	5.0%	0.8%	5.7%	86.5%	13.5%
Medical & Dental	0.0%	0.0%	0.0%	0.0%	0.0%		
Nursing & Midwifery	4.6%	0.5%	5.1%	0.7%	5.8%	88.1%	11.9%
Health & Social Care Professionals	3.7%	0.2%	3.9%	0.7%	4.6%	84.0%	16.0%
Management & Administrative	2.6%	0.0%	2.6%	0.1%	2.7%	96.0%	4.0%
General Support	6.8%	0.4%	7.2%	1.5%	8.6%	83.2%	16.8%
Patient & Client Care	5.0%	0.3%	5.3%	0.8%	6.1%	86.3%	13.7%

May 2021

Health Service Absence Rate - by Staff Category: May 2021	Certified absence	Self-certified absence	Non Covid-19 absence	Covid-19 absence	Total absence rate	% Non Covid-19 absence	% Covid-19 absence
HSE Social Care CHO 4	3.9%	0.8%	4.8%	0.9%	5.7%	83.8%	16.2%
Medical & Dental	0.0%	0.0%	0.0%	0.0%	0.0%		
Nursing & Midwifery	3.5%	1.0%	4.5%	1.3%	5.7%	78.1%	21.9%
Health & Social Care Professionals	3.1%	0.6%	3.7%	0.4%	4.1%	89.8%	10.2%
Management & Administrative	2.7%	0.6%	3.3%	0.0%	3.3%	100.0%	0.0%
General Support	4.5%	0.5%	5.0%	0.0%	5.1%	99.4%	0.6%
Patient & Client Care	4.4%	0.9%	5.3%	1.1%	6.4%	82.5%	17.5%

May 2021

Health Service Absence Rate - by Staff Category: May 2021	Certified absence	Self- certified absence	Non Covid-19 absence	Covid-19 absence	Total absence rate	% Non Covid-19 absence	% Covid-19 absence
HSE Social Care CHO 5	4.7%	0.5%	5.1%	0.7%	5.8%	88.7%	11.3%
Medical & Dental	0.0%	0.0%	0.0%	0.0%	0.0%		
Nursing & Midwifery	4.9%	0.5%	5.4%	0.5%	5.9%	92.1%	7.9%
Health & Social Care Professionals	4.0%	0.4%	4.4%	1.1%	5.5%	79.9%	20.1%
Management & Administrative	3.9%	0.1%	4.0%	0.1%	4.1%	98.7%	1.3%
General Support	5.1%	0.3%	5.5%	0.9%	6.3%	86.3%	13.7%
Patient & Client Care	4.9%	0.5%	5.4%	0.7%	6.1%	88.1%	11.9%

May 2021

Health Service Absence Rate - by Staff Category: May 2021	Certified absence	Self- certified absence	Non Covid-19 absence	Covid-19 absence	Total absence rate	% Non Covid-19 absence	% Covid-19 absence
HSE Social Care CHO 6	3.4%	0.4%	3.8%	1.3%	5.1%	74.8%	25.2%
Medical & Dental	0.0%	0.5%	0.5%	0.0%	0.5%	100.0%	0.0%
Nursing & Midwifery	2.8%	0.4%	3.2%	2.2%	5.4%	59.6%	40.4%
Health & Social Care Professionals	2.9%	0.4%	3.3%	0.8%	4.1%	79.7%	20.3%
Management & Administrative	2.1%	0.1%	2.2%	0.2%	2.5%	90.9%	9.1%
General Support	3.6%	0.3%	3.9%	0.3%	4.2%	93.7%	6.3%
Patient & Client Care	4.5%	0.5%	5.0%	1.6%	6.5%	76.1%	23.9%

May 2021

Health Service Absence Rate - by Staff Category: May 2021	Certified absence	Self- certified absence	Non Covid-19 absence	Covid-19 absence	Total absence rate	% Non Covid-19 absence	% Covid-19 absence
HSE Social Care CHO 7	4.2%	0.5%	4.7%	0.8%	5.5%	84.8%	15.2%
Medical & Dental	0.0%	0.0%	0.0%	0.0%	0.0%		
Nursing & Midwifery	5.0%	0.6%	5.5%	1.6%	7.1%	77.6%	22.4%
Health & Social Care Professionals	2.8%	0.3%	3.0%	0.9%	3.9%	77.5%	22.5%
Management & Administrative	1.0%	0.2%	1.2%	0.4%	1.6%	74.8%	25.2%
General Support	6.0%	0.4%	6.4%	0.4%	6.7%	94.4%	5.6%
Patient & Client Care	4.5%	0.6%	5.1%	0.6%	5.8%	89.1%	10.9%

May 2021

Health Service Absence Rate - by Staff Category: May 2021	Certified absence	Self- certified absence	Non Covid-19 absence	Covid-19 absence	Total absence rate	% Non Covid-19 absence	% Covid-19 absence
HSE Social Care CHO 8	4.5%	0.3%	4.8%	1.0%	5.8%	83.1%	16.9%
Medical & Dental	0.0%	0.0%	0.0%	0.0%	0.0%		
Nursing & Midwifery	5.1%	0.4%	5.5%	1.0%	6.5%	84.2%	15.8%
Health & Social Care Professionals	3.2%	0.1%	3.3%	0.6%	4.0%	83.9%	16.1%
Management & Administrative	2.3%	0.2%	2.4%	0.0%	2.4%	100.0%	0.0%
General Support	2.8%	0.4%	3.2%	0.7%	4.0%	81.2%	18.8%
Patient & Client Care	5.1%	0.4%	5.5%	1.2%	6.7%	81.5%	18.5%

May 2021

Health Service Absence Rate - by Staff Category: May 2021	Certified absence	Self-certified absence	Non Covid-19 absence	Covid-19 absence	Total absence rate	% Non Covid-19 absence	% Covid-19 absence
HSE Social Care CHO 9	3.5%	0.3%	3.8%	0.6%	4.4%	87.4%	12.6%
Medical & Dental	2.2%	0.0%	2.2%	0.0%	2.2%	100.0%	0.0%
Nursing & Midwifery	3.1%	0.4%	3.6%	0.7%	4.3%	83.5%	16.5%
Health & Social Care Professionals	3.0%	0.2%	3.2%	0.5%	3.7%	87.5%	12.5%
Management & Administrative	1.9%	0.1%	2.0%	0.0%	2.0%	99.3%	0.7%
General Support	3.6%	0.2%	3.8%	0.5%	4.3%	89.2%	10.8%
Patient & Client Care	4.8%	0.4%	5.2%	0.7%	5.9%	88.2%	11.8%

May 2021

[illegible]

May 2021

Bros. of Charity, Clare absence by Staff Category	Certified absence	Self-certified absence	Non Covid-19 absence	Covid-19 absence	Total absence rate	% Non Covid-19 absence	% Covid-19 absence
Bros. of Charity, Clare (CHO 3)	3.1%	0.2%	3.2%	1.5%	4.7%	68.1%	31.9%
Medical & Dental	0.0%	0.0%	0.0%	0.0%	0.0%		
Nursing & Midwifery	0.0%	0.0%	0.0%	0.0%	0.0%		#DIV/0
Health & Social Care Professionals	4.4%	0.3%	4.7%	2.0%	6.7%	69.9%	30.1%
Management & Administrative	5.3%	0.0%	5.3%	0.0%	5.3%	100.0%	0.0%
General Support							
Patient & Client Care	2.6%	0.1%	2.7%	1.4%	4.1%	65.7%	34.3%

May 2021

Bros. of Charity, Limerick absence by Staff Category	Certified absence	Self-certified absence	Non Covid-19 absence	Covid-19 absence	Total absence rate	% Non Covid-19 absence	% Covid-19 absence
Bros. of Charity, Limerick (CHO 3)	4.0%	0.3%	4.3%	1.1%	5.3%	80.1%	19.9%
Medical & Dental	0.0%	0.0%	0.0%	0.0%	0.0%		
Nursing & Midwifery	4.3%	0.7%	5.0%	0.8%	5.7%	86.5%	13.5%
Health & Social Care Professionals	4.1%	0.1%	4.2%	0.6%	4.8%	88.2%	11.8%
Management & Administrative	0.0%	0.0%	0.0%	0.0%	0.0%		#DIV/0
General Support	0.0%	0.0%	0.0%	5.3%	5.3%	0.0%	100.0%
Patient & Client Care	4.2%	0.2%	4.4%	1.3%	5.7%	77.3%	22.7%

May 2021

Bros. of Charity, Southern absence by Staff Category	Certified absence	Self-certified absence	Non Covid-19 absence	Covid-19 absence	Total absence rate	% Non Covid-19 absence	% Covid-19 absence
Bros. of Charity, Southern (CHO 4)	4.0%	0.3%	4.4%	0.4%	4.7%	92.1%	7.9%
Medical & Dental							
Nursing & Midwifery	3.6%	0.2%	3.9%	0.1%	4.0%	96.5%	3.5%
Health & Social Care Professionals	3.3%	0.4%	3.7%	0.3%	4.0%	92.6%	7.4%
Management & Administrative	4.5%	0.2%	4.7%	0.0%	4.7%	100.0%	0.0%
General Support	2.4%	0.0%	2.4%	0.0%	2.4%	100.0%	0.0%
Patient & Client Care	4.4%	0.4%	4.7%	0.5%	5.3%	90.4%	9.6%

May 2021

Bros. of Charity, Waterford absence by Staff Category	Certified absence	Self-certified absence	Non Covid-19 absence	Covid-19 absence	Total absence rate	% Non Covid-19 absence	% Covid-19 absence
Bros. of Charity, Waterford (CHO 5)	3.2%	0.3%	3.6%	1.6%	5.1%	69.5%	30.5%
Medical & Dental	0.0%	0.0%	0.0%	0.0%	0.0%		
Nursing & Midwifery	4.7%	0.2%	5.0%	2.2%	7.2%	69.3%	30.7%
Health & Social Care Professionals	2.4%	0.4%	2.8%	3.0%	5.8%	48.2%	51.8%
Management & Administrative	3.4%	0.1%	3.5%	0.0%	3.5%	100.0%	0.0%
General Support	0.0%	0.0%	0.0%	0.0%	0.0%		
Patient & Client Care	3.1%	0.4%	3.5%	1.3%	4.8%	72.6%	27.4%

May 2021

Bros. of Charity, West Region absence by Staff Category	Certified absence	Self-certified absence	Non Covid-19 absence	Covid-19 absence	Total absence rate	% Non Covid-19 absence	% Covid-19 absence
Bros. of Charity, West Region (CHO 2)	4.2%	0.1%	4.4%	0.6%	5.0%	87.3%	12.7%
Medical & Dental	16.8%	0.0%	16.8%	0.0%	16.8%	100.0%	0.0%
Nursing & Midwifery	2.0%	0.1%	2.1%	0.1%	2.2%	94.8%	5.2%
Health & Social Care Professionals	4.1%	0.1%	4.2%	1.0%	5.2%	80.6%	19.4%
Management & Administrative	5.5%	0.0%	5.5%	0.0%	5.5%	100.0%	0.0%
General Support	3.0%	0.0%	3.0%	0.2%	3.2%	93.8%	6.2%
Patient & Client Care	4.8%	0.2%	5.0%	0.7%	5.7%	87.1%	12.9%

May 2021

Carriglea Cairde Services absence by Staff Category	Certified absence	Self-certified absence	Non Covid-19 absence	Covid-19 absence	Total absence rate	% Non Covid-19 absence	% Covid-19 absence
Carriglea Cairde Services (CHO 5)	2.6%	0.1%	2.7%	0.1%	2.8%	95.2%	4.8%
Medical & Dental							
Nursing & Midwifery	4.2%	0.0%	4.2%	0.0%	4.2%	100.0%	0.0%
Health & Social Care Professionals	6.6%	0.0%	6.6%	0.3%	6.9%	95.3%	4.7%
Management & Administrative	0.0%	0.0%	0.0%	0.0%	0.0%		#DIV/0
General Support	0.0%	0.0%	0.0%	0.0%	0.0%		
Patient & Client Care	1.6%	0.1%	1.7%	0.1%	1.9%	92.3%	7.7%

May 2021

Central Remedial Clinic absence by Staff Category	Certified absence	Self-certified absence	Non Covid-19 absence	Covid-19 absence	Total absence rate	% Non Covid-19 absence	% Covid-19 absence
Central Remedial Clinic (CHO 9)	2.9%	0.3%	3.1%	0.1%	3.2%	97.2%	2.8%
Medical & Dental	0.0%	0.0%	0.0%	0.0%	0.0%		
Nursing & Midwifery	2.5%	1.1%	3.6%	0.0%	3.6%	100.0%	0.0%
Health & Social Care Professionals	1.0%	0.1%	1.1%	0.0%	1.1%	100.0%	0.0%
Management & Administrative	2.4%	0.2%	2.6%	0.0%	2.6%	100.0%	0.0%
General Support	3.0%	0.5%	3.5%	2.5%	6.0%	58.1%	41.9%
Patient & Client Care	6.0%	0.4%	6.4%	0.0%	6.4%	100.0%	0.0%

May 2021

Cheeverstown House absence by Staff Category	Certified absence	Self-certified absence	Non Covid-19 absence	Covid-19 absence	Total absence rate	% Non Covid-19 absence	% Covid-19 absence
Cheeverstown House (CHO 7)	5.5%	0.8%	6.3%	0.1%	6.4%	98.2%	1.8%
Medical & Dental	0.0%	0.0%	0.0%	0.0%	0.0%		
Nursing & Midwifery	6.4%	0.5%	6.9%	0.2%	7.1%	97.4%	2.6%
Health & Social Care Professionals	0.6%	0.5%	1.1%	0.0%	1.1%	100.0%	0.0%
Management & Administrative	0.0%	0.3%	0.3%	0.6%	0.9%	33.3%	66.7%
General Support	10.5%	0.5%	11.0%	0.0%	11.0%	100.0%	0.0%
Patient & Client Care	6.9%	1.5%	8.4%	0.0%	8.4%	99.4%	0.6%

May 2021

Children's Sunshine Home absence by Staff Category	Certified absence	Self-certified absence	Non Covid-19 absence	Covid-19 absence	Total absence rate	% Non Covid-19 absence	% Covid-19 absence
Children's Sunshine Home (CHO 6)	4.8%	0.9%	5.7%	0.7%	6.5%	88.7%	11.3%
Medical & Dental							
Nursing & Midwifery	7.6%	0.6%	8.2%	0.0%	8.2%	100.0%	0.0%
Health & Social Care Professionals	0.0%	0.0%	0.0%	0.0%	0.0%		#DIV/0
Management & Administrative	0.0%	0.6%	0.6%	2.2%	2.9%	22.0%	78.0%
General Support	0.0%	0.0%	0.0%	0.0%	0.0%		
Patient & Client Care	4.0%	1.6%	5.6%	1.4%	6.9%	80.4%	19.6%

May 2021

Cope Foundation absence by Staff Category	Certified absence	Self-certified absence	Non Covid-19 absence	Covid-19 absence	Total absence rate	% Non Covid-19 absence	% Covid-19 absence
Cope Foundation (CHO 4)	4.2%	1.7%	5.9%	0.5%	6.4%	92.5%	7.5%
Medical & Dental							
Nursing & Midwifery	3.0%	2.2%	5.3%	0.4%	5.7%	92.6%	7.4%
Health & Social Care Professionals	2.5%	1.2%	3.6%	0.0%	3.6%	100.0%	0.0%
Management & Administrative	1.1%	1.6%	2.7%	0.0%	2.7%	100.0%	0.0%
General Support	4.7%	1.1%	5.8%	0.0%	5.8%	100.0%	0.0%
Patient & Client Care	5.1%	1.7%	6.7%	0.7%	7.4%	90.9%	9.1%

May 2021

Daughters of Charity, Dublin absence by Staff Category	Certified absence	Self-certified absence	Non Covid-19 absence	Covid-19 absence	Total absence rate	% Non Covid-19 absence	% Covid-19 absence
Daughters of Charity, Dublin (CHO 9)	2.9%	0.3%	3.2%	0.9%	4.2%	77.6%	22.4%
Medical & Dental							
Nursing & Midwifery	2.4%	0.2%	2.6%	0.7%	3.4%	78.3%	21.7%
Health & Social Care Professionals	2.5%	0.5%	3.0%	1.4%	4.4%	68.2%	31.8%
Management & Administrative	3.4%	0.0%	3.4%	0.0%	3.4%	100.0%	0.0%
General Support	2.5%	0.4%	2.8%	0.5%	3.3%	85.3%	14.7%
Patient & Client Care	3.6%	0.4%	3.9%	1.1%	5.0%	78.7%	21.3%

May 2021

Daughters of Charity, Limerick absence by Staff Category	Certified absence	Self-certified absence	Non Covid-19 absence	Covid-19 absence	Total absence rate	% Non Covid-19 absence	% Covid-19 absence
Daughters of Charity, Limerick (CHO 3)	3.4%	0.3%	3.8%	0.9%	4.7%	80.9%	19.1%
Medical & Dental							
Nursing & Midwifery	3.1%	0.2%	3.3%	0.9%	4.2%	78.4%	21.6%
Health & Social Care Professionals	2.7%	0.4%	3.2%	0.1%	3.3%	97.5%	2.5%
Management & Administrative	0.2%	0.0%	0.2%	0.4%	0.5%	33.6%	66.4%
General Support	4.8%	0.5%	5.3%	2.6%	7.9%	67.1%	32.9%
Patient & Client Care	4.5%	0.4%	4.9%	0.9%	5.7%	84.8%	15.2%

May 2021

Daughters of Charity, Roscrea absence by Staff Category	Certified absence	Self-certified absence	Non Covid-19 absence	Covid-19 absence	Total absence rate	% Non Covid-19 absence	% Covid-19 absence
Daughters of Charity, Roscrea (CHO 3)	3.3%	0.4%	3.7%	0.3%	4.0%	91.5%	8.5%
Medical & Dental							
Nursing & Midwifery	0.1%	0.3%	0.4%	0.4%	0.9%	50.4%	49.6%
Health & Social Care Professionals						0.0%	
Management & Administrative	0.6%	0.0%	0.6%	0.0%	0.6%	100.0%	0.0%
General Support	0.0%	0.4%	0.4%	0.0%	0.4%	100.0%	0.0%
Patient & Client Care	4.2%	0.4%	4.6%	0.3%	4.9%	94.4%	5.6%

May 2021

Incorporated Orthopaedic Hospital absence by Staff Category	Certified absence	Self-certified absence	Non Covid-19 absence	Covid-19 absence	Total absence rate	% Non Covid-19 absence	% Covid-19 absence
Incorporated Orthopaedic Hospital (CHO 9)	2.7%	0.3%	3.0%	0.3%	3.3%	90.6%	9.4%
Medical & Dental	0.0%	0.0%	0.0%	0.0%	0.0%		
Nursing & Midwifery	2.0%	0.3%	2.3%	0.4%	2.7%	85.2%	14.8%
Health & Social Care Professionals	1.1%	0.2%	1.3%	0.0%	1.3%	100.0%	0.0%
Management & Administrative	7.7%	0.0%	7.7%	0.0%	7.7%	100.0%	0.0%
General Support	6.6%	0.0%	6.6%	0.0%	6.6%	100.0%	0.0%
Patient & Client Care	1.1%	0.6%	1.7%	0.6%	2.4%	73.2%	26.8%

May 2021

Kare, Newbridge, Co Kildare absence by Staff Category	Certified absence	Self-certified absence	Non Covid-19 absence	Covid-19 absence	Total absence rate	% Non Covid-19 absence	% Covid-19 absence
Kare, Newbridge, Co Kildare (CHO 7)	3.8%	0.3%	4.1%	0.8%	4.9%	83.4%	16.6%
Medical & Dental							
Nursing & Midwifery	6.2%	0.4%	6.6%	2.9%	9.5%	69.1%	30.9%
Health & Social Care Professionals	4.0%	0.2%	4.2%	0.2%	4.4%	95.5%	4.5%
Management & Administrative	2.0%	0.2%	2.1%	0.0%	2.1%	100.0%	0.0%
General Support	0.0%	0.0%	0.0%	0.0%	0.0%		
Patient & Client Care	3.7%	0.3%	4.0%	0.9%	4.8%	81.9%	18.1%

May 2021

Leopardstown Park Hospital absence by Staff Category	Certified absence	Self-certified absence	Non Covid-19 absence	Covid-19 absence	Total absence rate	% Non Covid-19 absence	% Covid-19 absence
Leopardstown Park Hospital (CHO 6)	4.4%	0.3%	4.6%	0.7%	5.4%	86.5%	13.5%
Medical & Dental							
Nursing & Midwifery	3.1%	0.1%	3.2%	0.7%	3.9%	82.4%	17.6%
Health & Social Care Professionals	0.0%	0.0%	0.0%	0.0%	0.0%		#DIV/0
Management & Administrative	3.9%	0.0%	3.9%	0.0%	3.9%	100.0%	0.0%
General Support	3.0%	0.1%	3.1%	0.0%	3.1%	100.0%	0.0%
Patient & Client Care	6.5%	0.6%	7.0%	1.4%	8.4%	83.9%	16.1%

May 2021

Muiriosa Foundation, Laois/Offaly absence by Staff Category	Certified absence	Self-certified absence	Non Covid-19 absence	Covid-19 absence	Total absence rate	% Non Covid-19 absence	% Covid-19 absence
Muiriosa Foundation, Laois/Offaly (CHO 8)	3.0%	0.1%	3.1%	1.6%	4.8%	65.7%	34.3%
Medical & Dental							
Nursing & Midwifery	5.4%	0.2%	5.6%	0.5%	6.1%	92.1%	7.9%
Health & Social Care Professionals	1.7%	0.1%	1.8%	2.0%	3.8%	47.9%	52.1%
Management & Administrative	0.0%	0.0%	0.0%	0.0%	0.0%		#DIV/0
General Support	0.0%	0.7%	0.7%	0.0%	0.7%	100.0%	0.0%
Patient & Client Care	3.5%	0.2%	3.7%	1.9%	5.6%	65.7%	34.3%

May 2021

Muiriosa Foundation, Longford/Westmeath absence by Staff Category	Certified absence	Self-certified absence	Non Covid-19 absence	Covid-19 absence	Total absence rate	% Non Covid-19 absence	% Covid-19 absence
Muiriosa Foundation, Longford/Westmeath (CHO 8)	3.1%	0.1%	3.2%	0.0%	3.2%	100.0%	0.0%
Medical & Dental							
Nursing & Midwifery	10.2%	0.0%	10.2%	0.0%	10.2%	100.0%	0.0%
Health & Social Care Professionals	2.5%	0.1%	2.6%	0.0%	2.6%	100.0%	0.0%
Management & Administrative	0.0%	0.8%	0.8%	0.0%	0.8%	100.0%	0.0%
General Support	0.0%	0.0%	0.0%	0.0%	0.0%		
Patient & Client Care	3.3%	0.1%	3.4%	0.0%	3.4%	100.0%	0.0%

May 2021

Muiriosa Foundation, South Kildare absence by Staff Category	Certified absence	Self-certified absence	Non Covid-19 absence	Covid-19 absence	Total absence rate	% Non Covid-19 absence	% Covid-19 absence
Muiriosa Foundation, South Kildare (CHO 8)	2.1%	0.2%	2.3%	0.0%	2.3%	98.6%	1.4%
Medical & Dental							
Nursing & Midwifery	2.8%	0.5%	3.3%	0.2%	3.5%	93.7%	6.3%
Health & Social Care Professionals	2.6%	0.2%	2.8%	0.0%	2.8%	100.0%	0.0%
Management & Administrative	0.0%	0.2%	0.2%	0.0%	0.2%	100.0%	0.0%
General Support	3.4%	0.0%	3.4%	0.0%	3.4%	100.0%	0.0%
Patient & Client Care	1.7%	0.2%	1.8%	0.0%	1.8%	100.0%	0.0%

May 2021

Peamount Hospital (Newcastle) absence by Staff Category	Certified absence	Self-certified absence	Non Covid-19 absence	Covid-19 absence	Total absence rate	% Non Covid-19 absence	% Covid-19 absence
Peamount Hospital (Newcastle) (CHO 7)	3.2%	0.9%	4.0%	1.2%	5.2%	77.7%	22.3%
Medical & Dental	0.0%	0.0%	0.0%	0.0%	0.0%		
Nursing & Midwifery	3.6%	0.9%	4.4%	1.1%	5.6%	79.7%	20.3%
Health & Social Care Professionals	0.6%	0.8%	1.5%	3.4%	4.9%	30.1%	69.9%
Management & Administrative	1.4%	0.7%	2.1%	0.0%	2.1%	100.0%	0.0%
General Support	2.6%	0.8%	3.4%	0.0%	3.4%	100.0%	0.0%
Patient & Client Care	4.1%	1.0%	5.0%	1.3%	6.3%	79.4%	20.6%

May 2021

Royal Hospital, Donnybrook, Dublin absence by Staff Category	Certified absence	Self-certified absence	Non Covid-19 absence	Covid-19 absence	Total absence rate	% Non Covid-19 absence	% Covid-19 absence
Royal Hospital, Donnybrook, Dublin (CHO 6)	4.0%	0.4%	4.4%	2.0%	6.5%	68.8%	31.2%
Medical & Dental	0.0%	0.0%	0.0%	0.0%	0.0%		
Nursing & Midwifery	2.2%	0.4%	2.6%	3.8%	6.4%	41.2%	58.8%
Health & Social Care Professionals	9.9%	0.0%	9.9%	0.0%	9.9%	100.0%	0.0%
Management & Administrative	2.0%	0.3%	2.4%	1.9%	4.3%	55.2%	44.8%
General Support	7.1%	0.2%	7.3%	1.1%	8.4%	86.8%	13.2%
Patient & Client Care	2.6%	0.8%	3.4%	1.5%	4.9%	69.5%	30.5%

May 2021

Stewart's Hospital, (Palmerstown) absence by Staff Category	Certified absence	Self-certified absence	Non Covid-19 absence	Covid-19 absence	Total absence rate	% Non Covid-19 absence	% Covid-19 absence
Stewart's Hospital, (Palmerstown) (CHO 7)	4.8%	0.5%	5.3%	0.1%	5.5%	97.2%	2.8%
Medical & Dental	0.0%	0.0%	0.0%	0.0%	0.0%		
Nursing & Midwifery	7.5%	0.2%	7.7%	0.0%	7.7%	100.0%	0.0%
Health & Social Care Professionals	1.9%	0.0%	1.9%	0.0%	1.9%	100.0%	0.0%
Management & Administrative	1.0%	0.1%	1.1%	0.0%	1.1%	100.0%	0.0%
General Support	7.2%	0.4%	7.6%	0.0%	7.6%	100.0%	0.0%
Patient & Client Care	4.6%	0.6%	5.3%	0.2%	5.5%	96.1%	3.9%

May 2021

St. John of God, Drumcar absence by Staff Category	Certified absence	Self-certified absence	Non Covid-19 absence	Covid-19 absence	Total absence rate	% Non Covid-19 absence	% Covid-19 absence
St. John of God, Drumcar (CHO 8)	4.2%	0.3%	4.5%	0.8%	5.3%	85.3%	14.7%
Medical & Dental	0.0%	0.0%	0.0%	0.0%	0.0%		
Nursing & Midwifery	4.5%	0.3%	4.8%	1.0%	5.8%	82.4%	17.6%
Health & Social Care Professionals	6.9%	0.3%	7.2%	0.1%	7.3%	98.2%	1.8%
Management & Administrative	0.0%	0.0%	0.0%	0.0%	0.0%		#DIV/0
General Support	3.5%	0.9%	4.5%	0.0%	4.5%	100.0%	0.0%
Patient & Client Care	3.6%	0.3%	3.9%	0.9%	4.8%	81.6%	18.4%

May 2021

St. John of God (IDS) absence by Staff Category	Certified absence	Self-certified absence	Non Covid-19 absence	Covid-19 absence	Total absence rate	% Non Covid-19 absence	% Covid-19 absence
St. John of God (IDS) (CHO 6)	3.2%	0.3%	3.5%	1.1%	4.5%	76.5%	23.5%
Medical & Dental	0.0%	0.0%	0.0%	0.0%	0.0%		
Nursing & Midwifery	4.5%	0.2%	4.7%	1.7%	6.4%	74.0%	26.0%
Health & Social Care Professionals	2.9%	0.4%	3.3%	1.6%	4.9%	68.2%	31.8%
Management & Administrative	0.1%	0.0%	0.1%	0.0%	0.1%	100.0%	0.0%
General Support	6.2%	0.4%	6.6%	0.0%	6.6%	100.0%	0.0%
Patient & Client Care	3.8%	0.3%	4.1%	0.8%	4.9%	83.5%	16.5%

May 2021

St. John of God, Kerry absence by Staff Category	Certified absence	Self-certified absence	Non Covid-19 absence	Covid-19 absence	Total absence rate	% Non Covid-19 absence	% Covid-19 absence
St. John of God, Kerry (CHO 4)	3.6%	0.3%	3.9%	0.3%	4.2%	92.2%	7.8%
Medical & Dental							
Nursing & Midwifery	4.2%	0.1%	4.3%	0.0%	4.3%	100.0%	0.0%
Health & Social Care Professionals	3.3%	0.5%	3.8%	1.9%	5.7%	67.3%	32.7%
Management & Administrative	0.0%	0.0%	0.0%	0.0%	0.0%		#DIV/0
General Support	3.2%	0.0%	3.2%	0.2%	3.3%	94.4%	5.6%
Patient & Client Care	3.9%	0.3%	4.3%	0.0%	4.3%	100.0%	0.0%

May 2021

St. John of God Liffey Services absence by Staff Category	Certified absence	Self-certified absence	Non Covid-19 absence	Covid-19 absence	Total absence rate	% Non Covid-19 absence	% Covid-19 absence
St. John of God Liffey Services (CHO 7)	2.8%	0.2%	3.0%	1.6%	4.6%	65.0%	35.0%
Medical & Dental	0.0%	0.0%	0.0%	0.0%	0.0%		
Nursing & Midwifery	3.5%	0.2%	3.7%	3.3%	7.0%	52.9%	47.1%
Health & Social Care Professionals	3.3%	0.2%	3.5%	1.3%	4.8%	72.6%	27.4%
Management & Administrative	0.1%	0.0%	0.1%	0.0%	0.1%	100.0%	0.0%
General Support	1.6%	0.0%	1.6%	1.8%	3.5%	46.6%	53.4%
Patient & Client Care	2.4%	0.2%	2.7%	1.4%	4.0%	66.4%	33.6%

May 2021

St. Michael's House, Dublin absence by Staff Category	Certified absence	Self-certified absence	Non Covid-19 absence	Covid-19 absence	Total absence rate	% Non Covid-19 absence	% Covid-19 absence
St. Michael's House, Dublin (CHO 9)	3.5%	0.2%	3.7%	0.4%	4.1%	90.1%	9.9%
Medical & Dental	4.9%	0.0%	4.9%	0.0%	4.9%	100.0%	0.0%
Nursing & Midwifery	1.9%	0.3%	2.2%	0.2%	2.5%	89.9%	10.1%
Health & Social Care Professionals	3.7%	0.2%	3.8%	0.3%	4.1%	92.8%	7.2%
Management & Administrative	0.2%	0.1%	0.3%	0.0%	0.3%	100.0%	0.0%
General Support	3.9%	0.1%	4.0%	0.2%	4.2%	95.3%	4.7%
Patient & Client Care	5.0%	0.2%	5.2%	0.9%	6.0%	85.7%	14.3%

May 2021

St. Patrick's, Kilkenny absence by Staff Category	Certified absence	Self-certified absence	Non Covid-19 absence	Covid-19 absence	Total absence rate	% Non Covid-19 absence	% Covid-19 absence
St. Patrick's, Kilkenny (CHO 5)	6.1%	0.4%	6.4%	0.2%	6.6%	97.5%	2.5%
Medical & Dental							
Nursing & Midwifery	3.4%	0.2%	3.6%	0.0%	3.6%	100.0%	0.0%
Health & Social Care Professionals	10.0%	0.2%	10.2%	0.0%	10.2%	100.0%	0.0%
Management & Administrative	4.2%	0.4%	4.6%	0.4%	5.0%	91.9%	8.1%
General Support	0.0%	0.0%	0.0%	0.0%	0.0%		
Patient & Client Care	6.4%	0.4%	6.8%	0.2%	7.0%	97.2%	2.8%

May 2021

Sunbeam House Services absence by Staff Category	Certified absence	Self-certified absence	Non Covid-19 absence	Covid-19 absence	Total absence rate	% Non Covid-19 absence	% Covid-19 absence
Sunbeam House Services (CHO 6)	2.3%	0.5%	2.8%	0.5%	3.2%	85.1%	14.9%
Medical & Dental							
Nursing & Midwifery	0.0%	0.9%	0.9%	1.7%	2.6%	34.7%	65.3%
Health & Social Care Professionals	2.4%	0.6%	3.0%	0.2%	3.2%	94.4%	5.6%
Management & Administrative	1.5%	0.1%	1.6%	0.0%	1.6%	100.0%	0.0%
General Support	0.0%	0.5%	0.5%	0.0%	0.5%	100.0%	0.0%
Patient & Client Care	2.9%	0.3%	3.3%	0.7%	4.0%	81.7%	18.3%

Social Care

Year/ month	Medical & Dental	Nursing & Midwifery	Health & Social Care Professionals	Management & Administrative	General Support	Patient & Client Care	Certified absence	Self-certified absence	Non Covid-19 absence	Covid-19 absence	Total absence rate
2021	1.7%	7.0%	5.5%	2.9%	6.1%	7.1%	4.1%	0.4%	4.6%	1.8%	6.4%
May 2021	2.5%	5.2%	4.1%	2.4%	4.5%	5.7%	3.9%	0.4%	4.3%	0.7%	5.0%
Apr 2021	2.0%	5.8%	4.5%	2.7%	5.4%	5.5%	3.9%	0.4%	4.3%	0.8%	5.1%
Mar 2021	2.2%	5.7%	4.9%	3.1%	5.3%	6.1%	4.0%	0.5%	4.5%	1.0%	5.5%
Feb 2021	1.3%	7.5%	6.1%	2.9%	6.1%	7.7%	4.4%	0.5%	4.9%	2.0%	6.9%
Jan 2021	0.9%	10.5%	8.1%	3.5%	9.5%	10.5%	4.6%	0.3%	4.9%	4.5%	9.4%
2020	3.1%	7.3%	5.0%	2.9%	6.6%	6.8%	4.5%	0.4%	4.9%	1.4%	6.2%
Dec 2020	2.6%	6.5%	4.1%	3.1%	4.9%	6.2%	4.2%	0.4%	4.6%	1.0%	5.5%
Nov 2020	3.6%	5.7%	3.8%	2.9%	5.5%	5.7%	4.0%	0.3%	4.3%	0.8%	5.1%
Oct 2020	3.8%	7.0%	5.0%	2.6%	6.8%	6.7%	4.2%	0.4%	4.6%	1.5%	6.1%
Sep 2020	3.0%	7.0%	4.7%	2.3%	6.1%	6.2%	4.3%	0.4%	4.6%	1.1%	5.8%
Aug 2020	3.7%	6.3%	4.4%	2.5%	4.8%	5.9%	4.4%	0.3%	4.7%	0.6%	5.3%
Jul 2020	1.1%	6.1%	4.0%	2.1%	5.9%	5.9%	4.4%	0.4%	4.8%	0.5%	5.3%
Jun 2020	0.9%	6.0%	3.7%	1.9%	6.1%	5.5%	4.0%	0.3%	4.3%	0.7%	5.0%
May 2020	2.1%	8.7%	5.6%	2.6%	7.6%	7.9%	4.5%	0.2%	4.7%	2.5%	7.2%
Apr 2020	2.6%	13.6%	8.3%	3.4%	12.8%	12.0%	5.2%	0.4%	5.7%	5.3%	10.9%
Mar 2020	3.1%	9.0%	7.1%	4.7%	7.9%	8.5%	5.1%	0.4%	5.5%	2.6%	8.0%
Feb 2020	4.3%	5.6%	4.4%	3.5%	5.0%	5.3%	4.6%	0.5%	5.0%		5.0%
Jan 2020	4.6%	6.0%	5.0%	3.5%	6.2%	5.9%	5.0%	0.6%	5.6%		5.6%
2019	1.3%	5.6%	4.2%	3.3%	4.8%	5.2%	4.4%	0.5%	4.9%		4.9%
Dec 2019	3.7%	6.0%	4.7%	3.5%	5.4%	4.8%	4.4%	0.5%	4.9%		4.9%
Nov 2019	1.5%	6.1%	3.8%	3.0%	5.0%	5.4%	4.5%	0.5%	5.0%		5.0%
Oct 2019	0.5%	6.0%	4.2%	2.9%	5.3%	5.7%	4.7%	0.5%	5.2%		5.2%
Sep 2019	1.3%	5.6%	4.5%	3.5%	5.3%	5.2%	4.5%	0.5%	4.9%		4.9%
Aug 2019	1.9%	5.7%	4.6%	3.4%	4.5%	5.4%	4.7%	0.4%	5.0%		5.0%
Jul 2019	1.5%	5.3%	4.1%	3.5%	4.8%	5.1%	4.5%	0.3%	4.8%		4.8%
Jun 2019	2.5%	5.4%	3.9%	2.8%	4.1%	5.3%	4.4%	0.4%	4.8%		4.8%
May 2019	3.9%	5.8%	4.3%	2.7%	4.3%	5.2%	4.4%	0.5%	4.9%		4.9%
Apr 2019	0.1%	5.5%	3.9%	3.1%	4.9%	5.2%	4.3%	0.4%	4.7%		4.7%
Mar 2019	0.3%	5.0%	3.7%	3.5%	4.7%	4.9%	4.1%	0.4%	4.5%		4.5%
Feb 2019	1.0%	5.6%	3.9%	3.9%	4.7%	4.9%	4.3%	0.5%	4.7%		4.7%
Jan 2019	0.3%	5.6%	4.5%	4.2%	5.3%	5.5%	4.6%	0.5%	5.2%		5.2%

2018	1.9%	4.6%	4.2%	3.4%	4.2%	4.8%	4.1%	0.4%	4.5%		4.5%
------	------	------	------	------	------	------	------	------	------	--	------

Social Care

Year/ month	CHO 1	CHO 2	CHO 3	CHO 4	CHO 5	CHO 6	CHO 7	CHO 8	CHO 9	other Comm.	Community Services absence rate	Certified absence	Self-certified absence	Non Covid-19 absence	Covid-19 absence	Total absence rate
2021	8.1%	6.4%	5.6%	6.6%	7.3%	5.7%	6.5%	6.7%	5.4%		6.4%	4.1%	0.4%	4.6%	1.8%	6.4%
May 2021	6.6%	4.6%	4.7%	5.5%	4.8%	4.3%	5.1%	5.0%	4.3%		5.0%	3.9%	0.4%	4.3%	0.7%	4.96%
Apr 2021	6.2%	4.5%	3.9%	5.1%	5.3%	5.0%	5.8%	5.6%	4.6%		5.1%	3.9%	0.4%	4.3%	0.8%	5.13%
Mar 2021	7.1%	6.2%	4.5%	5.4%	6.4%	4.5%	5.5%	5.9%	4.7%		5.5%	4.0%	0.5%	4.5%	1.0%	5.48%
Feb 2021	8.5%	7.6%	5.9%	6.7%	9.0%	6.2%	6.6%	7.7%	5.6%		6.9%	4.4%	0.5%	4.9%	2.0%	6.89%
Jan 2021	12.3%	9.0%	8.8%	10.1%	11.3%	8.9%	9.6%	8.7%	7.8%		9.4%	4.6%	0.3%	4.9%	4.5%	9.40%
2020	7.1%	5.6%	5.2%	6.2%	6.6%	4.7%	7.3%	6.7%	5.8%	0.0%	6.2%	4.5%	0.4%	4.9%	1.4%	6.2%
Dec 2020	7.6%	5.7%	4.7%	5.4%	6.9%	3.8%	6.1%	5.6%	4.5%	0.3%	5.5%	4.2%	0.4%	4.6%	1.0%	5.51%
Nov 2020	7.2%	5.2%	4.9%	5.0%	5.5%	3.5%	5.5%	5.4%	4.1%		5.1%	4.0%	0.3%	4.3%	0.8%	5.09%
Oct 2020	8.6%	5.8%	5.3%	6.5%	5.7%	3.7%	7.2%	6.5%	5.1%		6.1%	4.2%	0.4%	4.6%	1.5%	6.08%
Sep 2020	7.6%	5.3%	5.0%	5.3%	5.7%	4.1%	6.9%	6.1%	5.3%		5.8%	4.3%	0.4%	4.6%	1.1%	5.76%
Aug 2020	7.0%	4.1%	5.6%	5.3%	5.5%	4.0%	5.7%	5.7%	4.8%		5.3%	4.4%	0.3%	4.7%	0.6%	5.32%
Jul 2020	6.1%	4.1%	3.9%	4.6%	6.3%	4.4%	6.1%	6.2%	5.2%		5.3%	4.4%	0.4%	4.8%	0.5%	5.26%
Jun 2020	5.6%	4.3%	4.8%	4.9%	5.4%	3.7%	5.5%	5.4%	4.7%		5.0%	4.0%	0.3%	4.3%	0.7%	5.00%
May 2020	6.2%	6.2%	5.9%	7.7%	6.9%	5.4%	9.2%	8.4%	6.5%		7.2%	4.5%	0.2%	4.7%	2.5%	7.19%
Apr 2020	8.8%	9.0%	6.0%	11.9%	10.2%	10.9%	15.8%	12.1%	9.9%		10.9%	5.2%	0.4%	5.7%	5.3%	10.91%
Mar 2020	9.2%	6.8%	6.8%	8.1%	7.7%	6.0%	9.6%	7.2%	8.5%		8.0%	5.1%	0.4%	5.5%	2.6%	8.01%
Feb 2020	5.5%	5.3%	4.4%	4.9%	6.0%	3.7%	4.9%	5.3%	5.2%		5.0%	4.6%	0.5%	5.0%		5.04%
Jan 2020	6.2%	6.3%	5.1%	5.3%	6.9%	4.0%	5.5%	6.4%	5.2%		5.6%	5.0%	0.6%	5.6%		5.59%
2019	7.2%	4.8%	4.4%	4.9%	5.4%	4.0%	4.6%	5.0%	4.6%		4.9%	4.4%	0.5%	4.9%		4.9%
Dec 2019	7.1%	5.0%	4.0%	5.3%	7.0%	3.0%	4.9%	5.0%	5.0%		4.9%	4.4%	0.5%	4.9%		4.94%
Nov 2019	6.3%	5.5%	4.8%	5.4%	6.4%	3.4%	4.5%	4.9%	4.6%		5.0%	4.5%	0.5%	5.0%		5.01%
Oct 2019	6.3%	5.8%	4.8%	5.6%	5.5%	5.0%	5.1%	5.3%	4.6%		5.2%	4.7%	0.5%	5.2%		5.24%
Sep 2019	6.4%	4.9%	4.2%	5.2%	5.5%	4.2%	4.4%	4.9%	4.8%		4.9%	4.5%	0.5%	4.9%		4.93%
Aug 2019	8.1%	5.0%	4.4%	4.7%	5.0%	5.0%	4.3%	5.5%	4.7%		5.0%	4.7%	0.4%	5.0%		5.04%
Jul 2019	7.6%	3.9%	4.3%	4.7%	4.9%	4.2%	4.2%	5.3%	4.5%		4.8%	4.5%	0.3%	4.8%		4.78%
Jun 2019	7.1%	4.1%	4.5%	4.4%	4.7%	4.3%	5.1%	5.0%	4.4%		4.8%	4.4%	0.4%	4.8%		4.82%
May 2019	6.9%	4.4%	4.2%	4.5%	5.2%	4.3%	5.1%	5.2%	4.4%		4.9%	4.4%	0.5%	4.9%		4.89%
Apr 2019	6.7%	4.7%	4.6%	4.7%	5.5%	4.4%	4.4%	4.3%	4.0%		4.7%	4.3%	0.4%	4.7%		4.69%
Mar 2019	7.4%	4.4%	4.1%	4.2%	4.6%	3.4%	4.3%	4.9%	4.0%		4.5%	4.1%	0.4%	4.5%		4.54%
Feb 2019	7.9%	4.5%	4.4%	4.5%	4.9%	3.5%	4.2%	4.5%	4.8%		4.7%	4.3%	0.5%	4.7%		4.73%
Jan 2019	8.3%	4.8%	4.7%	5.4%	5.2%	3.8%	4.7%	5.2%	4.9%		5.2%	4.6%	0.5%	5.2%		5.18%

