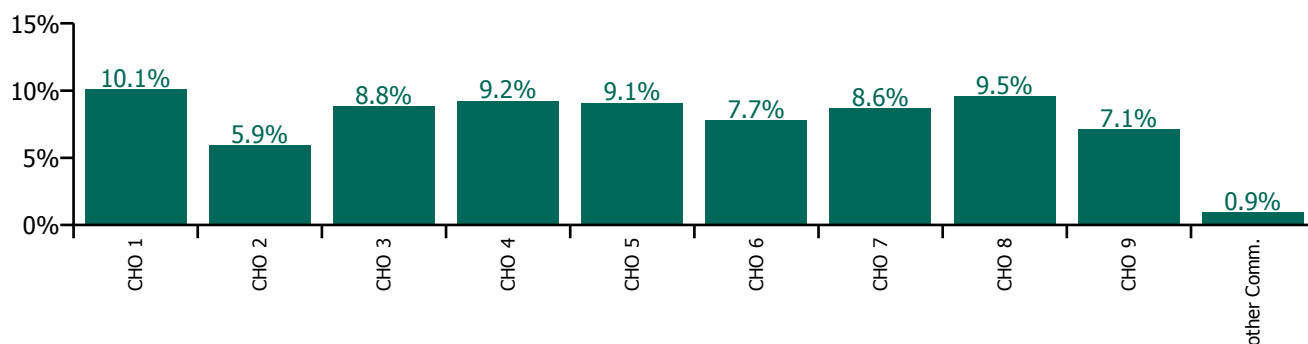


November 2021

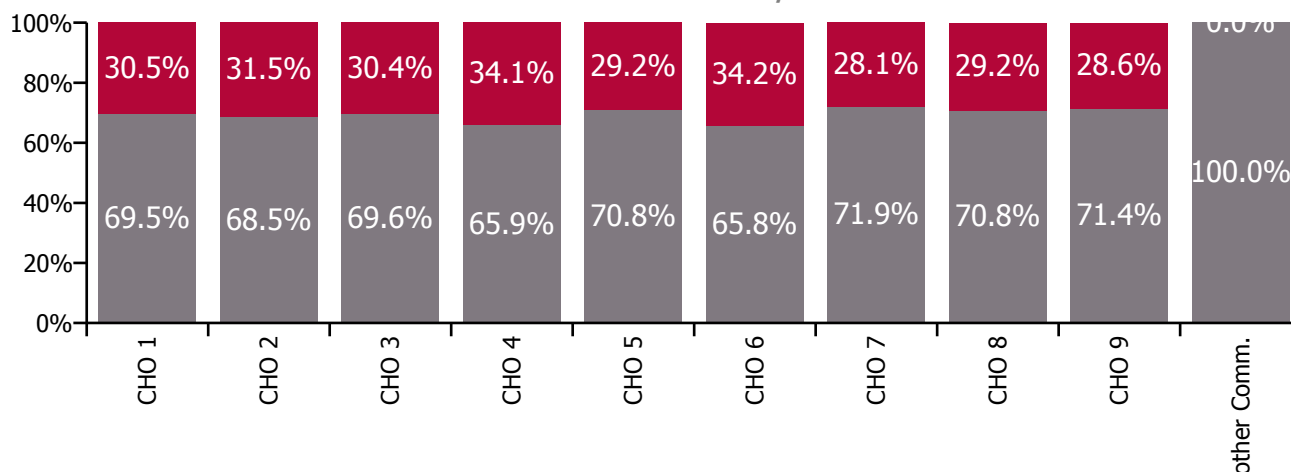
Health Service Absence Rate - by Staff Category: Nov 2021	Certified absence	Self-certified absence	Non Covid-19 absence	Covid-19 absence	Total absence rate	% Non Covid-19 absence	% Covid-19 absence
Social Care	5.1%	0.7%	5.9%	2.6%	8.4%	69.5%	30.5%
Medical & Dental	1.6%	0.2%	1.8%	0.6%	2.3%	76.0%	24.0%
Nursing & Midwifery	5.4%	0.9%	6.3%	2.8%	9.1%	69.6%	30.4%
Health & Social Care Professionals	4.0%	0.5%	4.5%	2.3%	6.8%	66.1%	33.9%
Management & Administrative	3.8%	0.4%	4.2%	1.5%	5.7%	73.3%	26.7%
General Support	5.3%	0.6%	6.0%	2.3%	8.3%	71.9%	28.1%
Patient & Client Care	5.6%	0.8%	6.5%	2.8%	9.3%	69.7%	30.3%

Health Service Absence Rate - Care Group by CHO: Nov 2021	Certified absence	Self-certified absence	Non Covid-19 absence	Covid-19 absence	Total absence rate	% Non Covid-19 absence	% Covid-19 absence
Social Care	5.1%	0.7%	5.9%	2.6%	8.4%	69.5%	30.5%
CHO 1	6.3%	0.7%	7.0%	3.1%	10.1%	69.5%	30.5%
CHO 2	3.7%	0.4%	4.1%	1.9%	5.9%	68.5%	31.5%
CHO 3	5.5%	0.6%	6.1%	2.7%	8.8%	69.6%	30.4%
CHO 4	4.7%	1.3%	6.1%	3.1%	9.2%	65.9%	34.1%
CHO 5	5.7%	0.7%	6.4%	2.6%	9.1%	70.8%	29.2%
CHO 6	4.4%	0.7%	5.1%	2.7%	7.7%	65.8%	34.2%
CHO 7	5.4%	0.8%	6.2%	2.4%	8.6%	71.9%	28.1%
CHO 8	6.1%	0.6%	6.8%	2.8%	9.5%	70.8%	29.2%
CHO 9	4.4%	0.6%	5.1%	2.0%	7.1%	71.4%	28.6%
Other Community Services	0.7%	0.2%	0.9%	0.0%	0.9%	100.0%	0.0%

Total absence rate



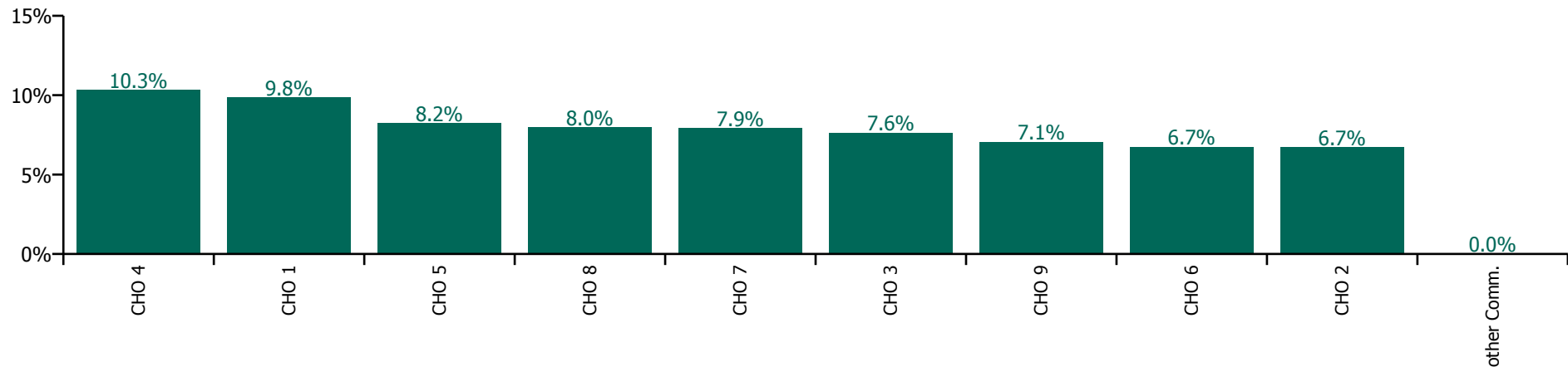
% of Absence Non Covid-19 / Covid-19



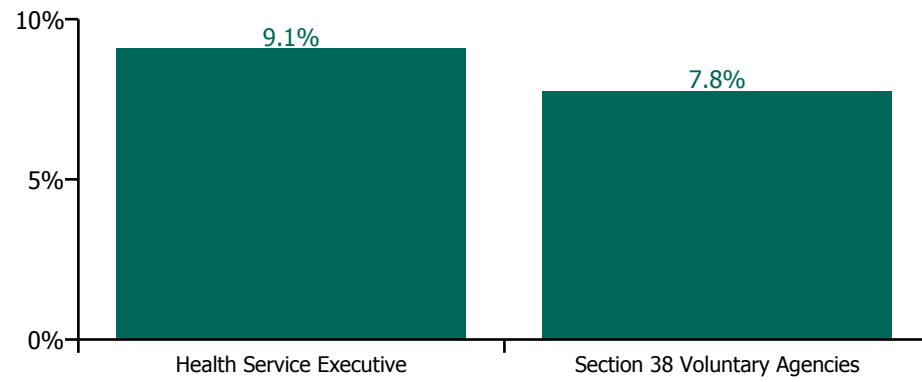
November 2021

Health Service Absence Rate - by Hospital Group & Staff Category: Nov 2021	Medical & Dental	Nursing & Midwifery	Health & Social Care Professionals	Management & Administrative	General Support	Patient & Client Care	Certified absence	Self-certified absence	Non Covid-19 absence	Covid-19 absence	Total absence rate
Social Care	3.7%	9.1%	6.9%	5.9%	7.2%	8.6%	4.9%	0.7%	5.6%	2.4%	8.1%
CHO 1	0.0%	10.1%	6.2%	6.6%	7.1%	10.7%	6.1%	0.7%	6.8%	3.0%	9.8%
CHO 2	0.0%	6.5%	8.3%	3.7%	5.8%	6.6%	4.1%	0.5%	4.6%	2.1%	6.7%
CHO 3	0.0%	7.2%	6.6%	5.8%	8.1%	8.4%	4.4%	0.4%	4.8%	2.8%	7.6%
CHO 4	0.0%	13.6%	9.8%	4.8%	8.1%	10.4%	5.3%	1.9%	7.3%	3.0%	10.3%
CHO 5	16.5%	10.7%	9.1%	6.8%	4.3%	7.5%	4.8%	0.5%	5.3%	2.9%	8.2%
CHO 6	0.0%	9.5%	6.3%	3.2%	6.1%	7.2%	4.1%	0.6%	4.7%	2.0%	6.7%
CHO 7	2.1%	7.9%	4.5%	7.5%	8.7%	9.3%	5.1%	0.7%	5.8%	2.1%	7.9%
CHO 8	0.0%	12.0%	5.8%	9.5%	3.7%	7.9%	5.2%	0.5%	5.8%	2.2%	8.0%
CHO 9	6.3%	7.2%	7.2%	4.8%	6.2%	7.6%	4.4%	0.5%	5.0%	2.1%	7.1%
Other Community Services				0.0%			0.0%	0.0%	0.0%	0.0%	0.0%

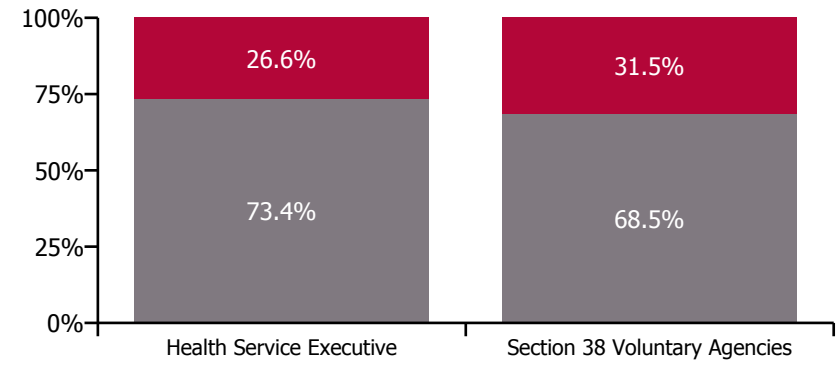
Total absence rate



Total absence rate



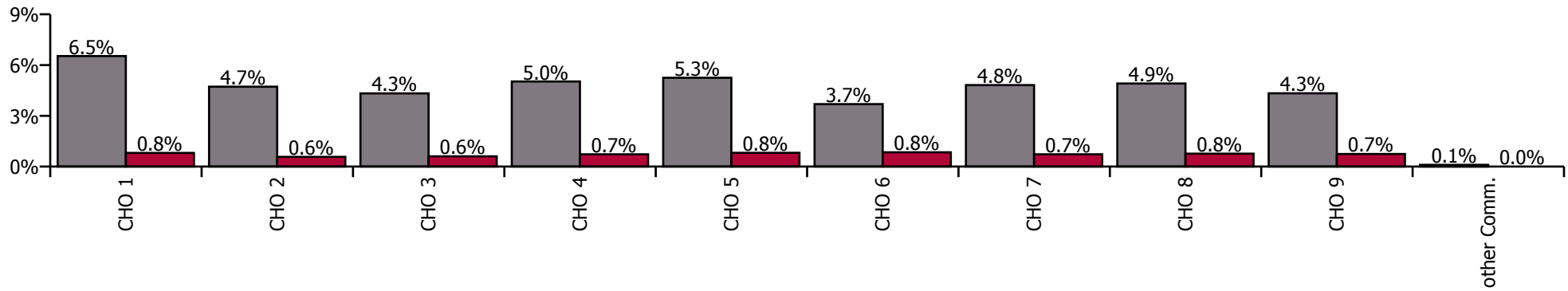
Non Covid-19 & Covid-19 Absence



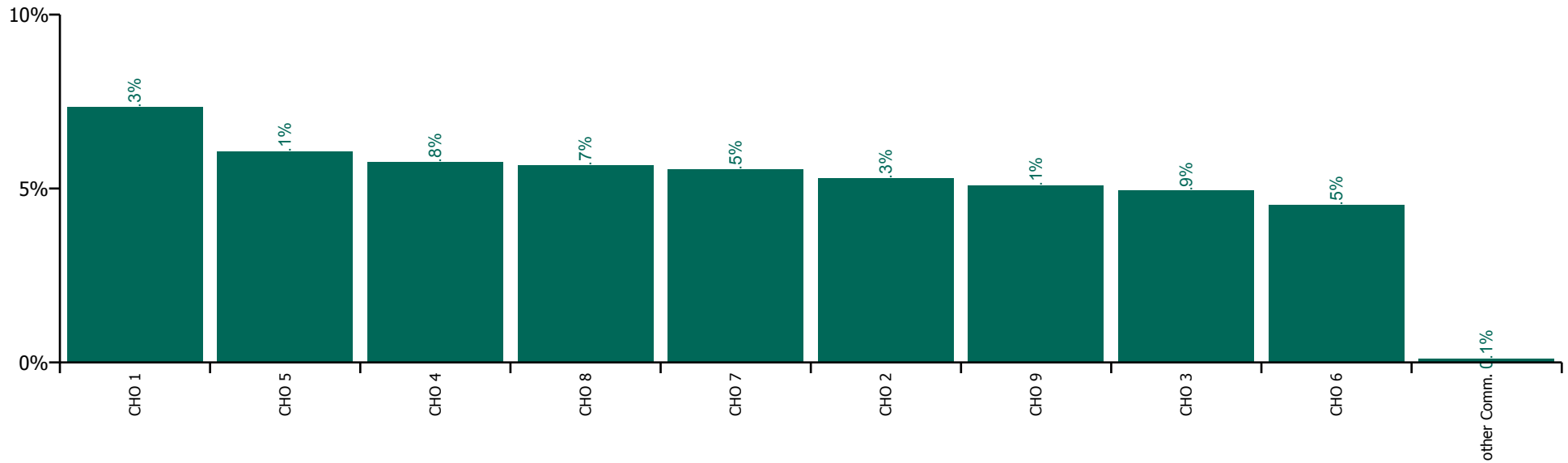
November 2021

Health Service Absence Rate by Hospital: Nov 2021	Medical & Dental	Nursing & Midwifery	Health & Social Care Professionals	Management & Administrative	General Support	Patient & Client Care	Certified absence	Self-certified absence	Non Covid-19 absence	Covid-19 absence	Total absence rate
Social Care	2.6%	6.2%	4.7%	3.3%	5.4%	6.0%	4.4%	0.4%	4.8%	0.7%	5.5%
Health Service Executive	0.2%	8.5%	3.7%	3.4%	4.7%	7.7%	6.2%	0.3%	6.5%	0.8%	7.3%
CHO 1	0.2%	8.5%	3.7%	3.4%	4.7%	7.7%	6.2%	0.3%	6.5%	0.8%	7.3%
Health Service Executive	4.4%	7.7%	3.4%	1.2%	0.8%	4.9%	4.2%	0.2%	4.4%	0.5%	4.9%
Section 38 Voluntary Agencies	4.9%	5.5%	5.2%	3.2%	4.8%	5.7%	4.4%	0.3%	4.8%	0.6%	5.4%
CHO 2	4.8%	5.9%	5.0%	2.8%	4.3%	5.6%	4.4%	0.3%	4.7%	0.6%	5.3%
Health Service Executive			3.5%	4.9%	19.3%	5.8%	4.5%	0.3%	4.8%	0.5%	5.3%
Section 38 Voluntary Agencies	1.5%	5.5%	4.7%	2.5%	5.0%	4.9%	4.0%	0.3%	4.3%	0.6%	4.9%
CHO 3	1.5%	5.5%	4.6%	3.2%	5.8%	4.9%	4.1%	0.3%	4.3%	0.6%	4.9%
Health Service Executive	6.9%	5.4%	4.2%	2.1%	4.3%	4.9%	3.3%	0.6%	3.9%	0.5%	4.5%
Section 38 Voluntary Agencies	0.0%	6.9%	4.8%	3.2%	5.2%	6.2%	4.4%	0.8%	5.1%	0.7%	5.9%
CHO 4	6.8%	6.8%	4.7%	3.0%	5.1%	6.1%	4.3%	0.7%	5.0%	0.7%	5.8%
Health Service Executive	0.0%	7.7%	5.7%	5.7%	4.6%	7.7%	5.6%	0.5%	6.1%	0.8%	6.9%
Section 38 Voluntary Agencies	9.9%	6.7%	6.3%	4.5%	6.9%	5.8%	4.5%	0.6%	5.1%	0.8%	5.9%
CHO 5	7.7%	7.0%	6.1%	4.8%	6.7%	5.9%	4.7%	0.5%	5.3%	0.8%	6.1%
Health Service Executive	0.9%	8.1%	6.4%	5.9%	2.4%	9.2%	4.7%	0.5%	5.3%	2.5%	7.8%
Section 38 Voluntary Agencies	0.0%	4.6%	4.4%	2.3%	4.8%	4.6%	3.1%	0.5%	3.6%	0.7%	4.3%
CHO 6	0.6%	5.1%	4.5%	2.6%	4.7%	5.0%	3.2%	0.5%	3.7%	0.8%	4.5%
Health Service Executive		2.5%	5.5%	5.1%		4.1%	4.4%	0.3%	4.8%	0.5%	5.2%
Section 38 Voluntary Agencies	1.3%	5.9%	4.4%	3.1%	5.6%	6.2%	4.4%	0.5%	4.8%	0.7%	5.6%
CHO 7	1.3%	5.9%	4.4%	3.2%	5.6%	6.2%	4.4%	0.5%	4.8%	0.7%	5.5%
Health Service Executive	0.2%	10.1%	6.1%	6.1%	10.4%	10.8%	7.4%	0.5%	8.0%	1.2%	9.2%
Section 38 Voluntary Agencies	0.2%	4.7%	4.8%	3.0%	5.1%	4.9%	3.8%	0.3%	4.1%	0.6%	4.8%
CHO 8	0.2%	6.0%	5.1%	4.2%	5.6%	6.1%	4.6%	0.4%	4.9%	0.8%	5.7%
Health Service Executive	1.0%	7.7%	4.3%	3.5%	7.9%	8.6%	6.0%	0.4%	6.4%	0.9%	7.4%
Section 38 Voluntary Agencies	3.3%	4.6%	4.6%	3.0%	5.5%	5.4%	3.8%	0.3%	4.1%	0.7%	4.8%
CHO 9	3.1%	5.3%	4.6%	3.1%	5.6%	5.8%	4.0%	0.3%	4.3%	0.7%	5.1%
Other Community Services				0.1%			0.1%	0.0%	0.1%	0.0%	0.1%

Non Covid-19 / Covid-19 absence rates



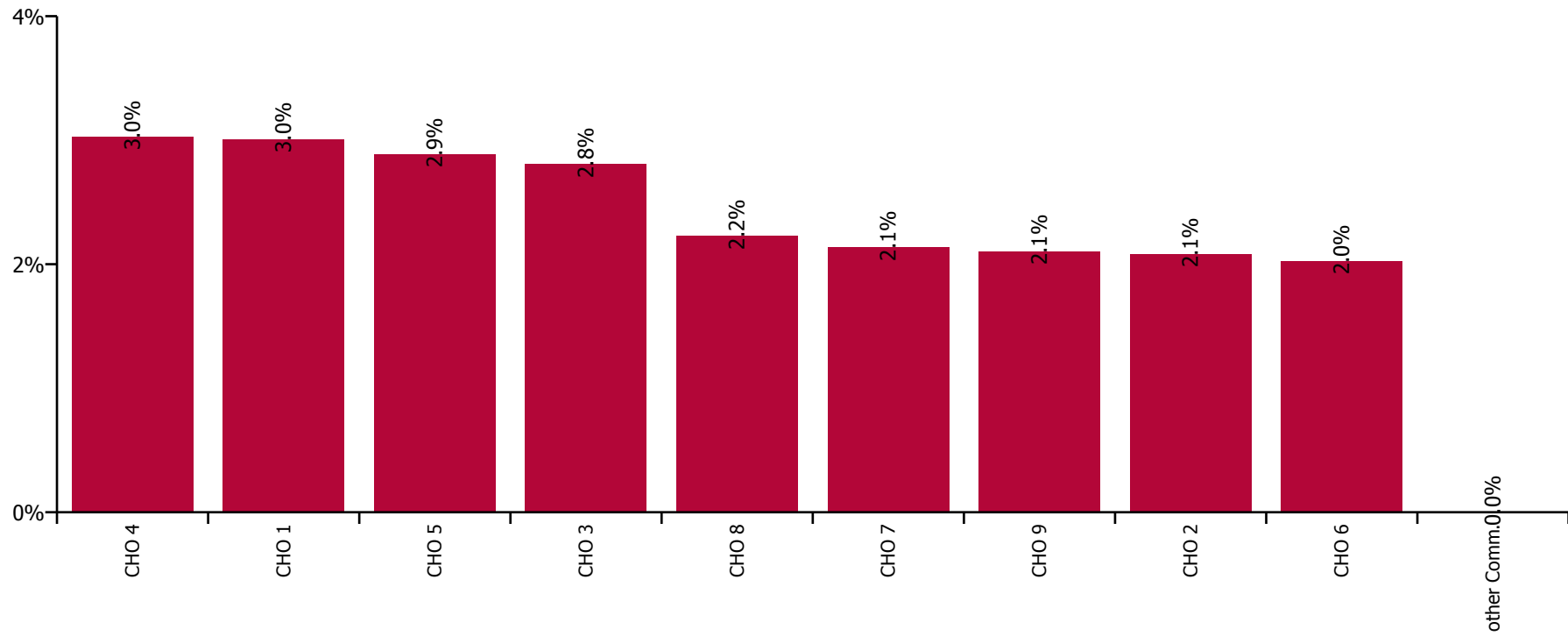
Total absence rate



November 2021

Health Service Covid-19 Absence Rate - by Staff Category & Hospital: Nov 2021	Medical & Dental	Nursing & Midwifery	Health & Social Care Professionals	Management & Administrative	General Support	Patient & Client Care	Covid-19 absence	Non Covid-19 absence	Total absence rate
Social Care	0.9%	2.6%	2.3%	5.9%	1.8%	2.7%	2.4%	5.6%	8.1%
Health Service Executive	0.0%	2.1%	1.9%	6.6%	2.2%	3.8%	3.0%	6.8%	9.8%
CHO 1	0.0%	2.1%	1.9%	6.6%	2.2%	3.8%	3.0%	6.8%	9.8%
Health Service Executive	0.0%	0.2%	0.0%	0.3%	0.0%	0.5%	0.2%	1.6%	1.9%
Section 38 Voluntary Agencies	0.0%	2.0%	2.8%	4.8%	2.2%	2.7%	2.4%	5.2%	7.7%
CHO 2	0.0%	1.5%	2.5%	3.7%	1.9%	2.3%	2.1%	4.6%	6.7%
Health Service Executive			1.8%	8.3%	0.0%	1.5%	1.4%	6.2%	7.6%
Section 38 Voluntary Agencies	0.0%	2.7%	1.5%	4.4%	2.6%	3.4%	2.9%	4.7%	7.6%
CHO 3	0.0%	2.7%	1.6%	5.8%	2.2%	3.3%	2.8%	4.8%	7.6%
Health Service Executive	0.0%	5.1%	6.7%	2.0%	0.0%	2.9%	3.2%	6.0%	9.2%
Section 38 Voluntary Agencies		5.0%	2.7%	5.7%	2.7%	2.7%	3.0%	7.4%	10.4%
CHO 4	0.0%	5.0%	3.0%	4.8%	2.5%	2.7%	3.0%	7.3%	10.3%
Health Service Executive	0.0%	3.3%	1.8%	7.5%	0.0%	2.0%	2.5%	6.5%	8.9%
Section 38 Voluntary Agencies	24.3%	2.4%	5.0%	6.2%	0.2%	2.9%	3.0%	5.0%	8.0%
CHO 5	10.7%	2.8%	3.7%	6.8%	0.2%	2.8%	2.9%	5.3%	8.2%
Health Service Executive	0.0%	1.8%	5.0%	10.5%	0.0%	1.9%	2.2%	7.7%	9.9%
Section 38 Voluntary Agencies	0.0%	1.4%	2.4%	1.7%	1.9%	2.2%	2.0%	4.1%	6.1%
CHO 6	0.0%	1.5%	2.6%	3.2%	1.9%	2.2%	2.0%	4.7%	6.7%
Health Service Executive		0.0%	0.5%	11.5%		0.0%	1.0%	4.6%	5.7%
Section 38 Voluntary Agencies	2.1%	1.5%	1.8%	6.8%	2.0%	2.6%	2.2%	5.8%	8.0%
CHO 7	2.1%	1.4%	1.7%	7.5%	2.0%	2.6%	2.1%	5.8%	7.9%
Health Service Executive	0.0%	1.8%	0.6%	11.4%	5.7%	2.7%	1.7%	8.6%	10.3%
Section 38 Voluntary Agencies	0.0%	6.4%	2.2%	7.5%	0.7%	2.1%	2.4%	4.6%	7.0%
CHO 8	0.0%	4.2%	1.8%	9.5%	1.5%	2.2%	2.2%	5.8%	8.0%
Health Service Executive	0.0%	2.1%	1.3%	9.8%	0.0%	4.1%	2.7%	7.3%	10.0%
Section 38 Voluntary Agencies	0.0%	2.3%	2.4%	3.5%	1.1%	1.8%	2.0%	4.5%	6.5%
CHO 9	0.0%	2.3%	2.3%	4.8%	1.0%	2.2%	2.1%	5.0%	7.1%
Other Community Services				0.0%			0.0%	0.0%	0.0%

Covid-19 absence rate



November 2021

Health Service Absence Rate - by Staff Category: Nov 2021	Certified absence	Self-certified absence	Non Covid-19 absence	Covid-19 absence	Total absence rate	% Non Covid-19 absence	% Covid-19 absence
HSE Social Care CHO 1	6.3%	0.7%	7.0%	3.1%	10.1%	69.5%	30.5%
Medical & Dental	0.0%	0.0%	0.0%	0.0%	0.0%		
Nursing & Midwifery	6.1%	0.8%	6.9%	2.6%	9.4%	72.8%	27.2%
Health & Social Care Professionals	3.5%	0.4%	4.0%	1.7%	5.7%	69.6%	30.4%
Management & Administrative	3.9%	0.4%	4.3%	2.4%	6.7%	64.0%	36.0%
General Support	7.8%	0.3%	8.1%	2.9%	11.0%	73.5%	26.5%
Patient & Client Care	7.0%	0.8%	7.7%	3.6%	11.4%	68.0%	32.0%

November 2021

Health Service Absence Rate - by Staff Category: Nov 2021	Certified absence	Self-certified absence	Non Covid-19 absence	Covid-19 absence	Total absence rate	% Non Covid-19 absence	% Covid-19 absence
HSE Social Care CHO 2	3.7%	0.4%	4.1%	1.9%	5.9%	68.5%	31.5%
Medical & Dental	2.7%	0.0%	2.7%	0.0%	2.7%	100.0%	0.0%
Nursing & Midwifery	3.8%	0.3%	4.1%	1.8%	5.9%	69.3%	30.7%
Health & Social Care Professionals	4.7%	0.5%	5.3%	2.5%	7.8%	68.2%	31.8%
Management & Administrative	2.0%	0.1%	2.2%	1.0%	3.2%	68.3%	31.7%
General Support	3.1%	0.3%	3.4%	1.3%	4.6%	73.0%	27.0%
Patient & Client Care	3.7%	0.4%	4.1%	1.9%	6.0%	67.8%	32.2%

November 2021

Health Service Absence Rate - by Staff Category: Nov 2021	Certified absence	Self-certified absence	Non Covid-19 absence	Covid-19 absence	Total absence rate	% Non Covid-19 absence	% Covid-19 absence
HSE Social Care CHO 3	5.5%	0.6%	6.1%	2.7%	8.8%	69.6%	30.4%
Medical & Dental	0.0%	0.0%	0.0%	0.0%	0.0%		
Nursing & Midwifery	6.7%	0.7%	7.3%	2.8%	10.1%	72.4%	27.6%
Health & Social Care Professionals	4.5%	0.4%	4.9%	1.9%	6.7%	72.3%	27.7%
Management & Administrative	3.1%	0.5%	3.6%	2.0%	5.6%	63.9%	36.1%
General Support	5.5%	0.5%	6.1%	2.5%	8.5%	71.2%	28.8%
Patient & Client Care	5.7%	0.7%	6.4%	3.0%	9.4%	67.9%	32.1%

November 2021

Health Service Absence Rate - by Staff Category: Nov 2021	Certified absence	Self-certified absence	Non Covid-19 absence	Covid-19 absence	Total absence rate	% Non Covid-19 absence	% Covid-19 absence
HSE Social Care CHO 4	4.7%	1.3%	6.1%	3.1%	9.2%	65.9%	34.1%
Medical & Dental	0.0%	0.0%	0.0%	0.0%	0.0%		
Nursing & Midwifery	3.8%	1.6%	5.4%	3.8%	9.2%	59.0%	41.0%
Health & Social Care Professionals	5.5%	0.8%	6.3%	2.9%	9.1%	68.7%	31.3%
Management & Administrative	2.3%	1.1%	3.4%	1.0%	4.4%	76.9%	23.1%
General Support	4.2%	0.7%	4.9%	2.5%	7.4%	66.2%	33.8%
Patient & Client Care	5.5%	1.4%	6.9%	3.3%	10.2%	67.5%	32.5%

November 2021

Health Service Absence Rate - by Staff Category: Nov 2021	Certified absence	Self- certified absence	Non Covid-19 absence	Covid-19 absence	Total absence rate	% Non Covid-19 absence	% Covid-19 absence
HSE Social Care CHO 5	5.7%	0.7%	6.4%	2.6%	9.1%	70.8%	29.2%
Medical & Dental	0.8%	0.0%	0.8%	1.5%	2.3%	34.8%	65.2%
Nursing & Midwifery	7.1%	1.1%	8.2%	2.7%	10.9%	75.3%	24.7%
Health & Social Care Professionals	4.5%	0.3%	4.9%	3.5%	8.4%	58.2%	41.8%
Management & Administrative	3.8%	0.3%	4.1%	2.5%	6.6%	61.9%	38.1%
General Support	4.5%	0.6%	5.2%	4.5%	9.6%	53.7%	46.3%
Patient & Client Care	5.7%	0.7%	6.5%	2.3%	8.8%	73.5%	26.5%

November 2021

Health Service Absence Rate - by Staff Category: Nov 2021	Certified absence	Self- certified absence	Non Covid-19 absence	Covid-19 absence	Total absence rate	% Non Covid-19 absence	% Covid-19 absence
HSE Social Care CHO 6	4.4%	0.7%	5.1%	2.7%	7.7%	65.8%	34.2%
Medical & Dental	4.7%	0.0%	4.7%	0.0%	4.7%	100.0%	0.0%
Nursing & Midwifery	6.9%	0.7%	7.6%	3.0%	10.6%	71.5%	28.5%
Health & Social Care Professionals	3.2%	0.5%	3.7%	2.8%	6.4%	57.2%	42.8%
Management & Administrative	2.9%	0.1%	3.0%	1.0%	4.0%	75.2%	24.8%
General Support	6.3%	0.6%	7.0%	2.2%	9.2%	75.6%	24.4%
Patient & Client Care	3.9%	0.9%	4.8%	2.9%	7.7%	62.3%	37.7%

November 2021

Health Service Absence Rate - by Staff Category: Nov 2021	Certified absence	Self- certified absence	Non Covid-19 absence	Covid-19 absence	Total absence rate	% Non Covid-19 absence	% Covid-19 absence
HSE Social Care CHO 7	5.4%	0.8%	6.2%	2.4%	8.6%	71.9%	28.1%
Medical & Dental	0.0%	0.0%	0.0%	1.4%	1.4%	0.0%	100.0%
Nursing & Midwifery	5.6%	1.1%	6.7%	2.5%	9.2%	73.2%	26.8%
Health & Social Care Professionals	2.4%	0.4%	2.8%	1.7%	4.5%	63.2%	36.8%
Management & Administrative	5.4%	0.3%	5.7%	2.1%	7.8%	72.9%	27.1%
General Support	6.2%	0.7%	6.9%	2.5%	9.4%	73.5%	26.5%
Patient & Client Care	6.3%	0.9%	7.2%	2.7%	9.9%	72.5%	27.5%

November 2021

Health Service Absence Rate - by Staff Category: Nov 2021	Certified absence	Self- certified absence	Non Covid-19 absence	Covid-19 absence	Total absence rate	% Non Covid-19 absence	% Covid-19 absence
HSE Social Care CHO 8	6.1%	0.6%	6.8%	2.8%	9.5%	70.8%	29.2%
Medical & Dental	0.0%	0.0%	0.0%	0.0%	0.0%		
Nursing & Midwifery	6.4%	1.0%	7.3%	3.9%	11.3%	65.2%	34.8%
Health & Social Care Professionals	4.1%	0.4%	4.4%	1.7%	6.1%	72.0%	28.0%
Management & Administrative	8.2%	0.2%	8.4%	1.1%	9.5%	88.8%	11.2%
General Support	3.9%	0.3%	4.1%	3.3%	7.5%	55.4%	44.6%
Patient & Client Care	6.6%	0.6%	7.3%	2.9%	10.2%	71.1%	28.9%

November 2021

Health Service Absence Rate - by Staff Category: Nov 2021	Certified absence	Self- certified absence	Non Covid-19 absence	Covid-19 absence	Total absence rate	% Non Covid-19 absence	% Covid-19 absence
HSE Social Care CHO 9	4.4%	0.6%	5.1%	2.0%	7.1%	71.4%	28.6%
Medical & Dental	3.5%	0.7%	4.2%	0.9%	5.1%	83.2%	16.8%
Nursing & Midwifery	4.3%	0.7%	5.0%	2.1%	7.1%	70.2%	29.8%
Health & Social Care Professionals	4.3%	0.4%	4.7%	2.4%	7.1%	66.3%	33.7%
Management & Administrative	3.1%	0.2%	3.4%	1.3%	4.6%	72.9%	27.1%
General Support	5.2%	1.1%	6.3%	1.1%	7.4%	85.3%	14.7%
Patient & Client Care	5.0%	0.8%	5.8%	2.1%	7.9%	73.6%	26.4%

November 2021

Health Service Absence Rate - by Staff Category: Nov 2021	Certified absence	Self- certified absence	Non Covid-19 absence	Covid-19 absence	Total absence rate	% Non Covid-19 absence	% Covid-19 absence
HSE Social Care Other Community Services	0.7%	0.2%	0.9%	0.0%	0.9%	100.0%	0.0%
Medical & Dental							
Nursing & Midwifery							
Health & Social Care Professionals	0.0%	0.0%	0.0%	0.0%	0.0%		#DIV/0
Management & Administrative	0.7%	0.2%	0.9%	0.0%	0.9%	100.0%	0.0%
General Support							
Patient & Client Care	0.0%	0.0%	0.0%	0.0%	0.0%		#DIV/0

November 2021

Bros. of Charity, Clare absence by Staff Category	Certified absence	Self-certified absence	Non Covid-19 absence	Covid-19 absence	Total absence rate	% Non Covid-19 absence	% Covid-19 absence
Bros. of Charity, Clare (CHO 3)	4.1%	0.5%	4.6%	2.9%	7.5%	61.0%	39.0%
Medical & Dental	0.0%	0.0%	0.0%	0.0%	0.0%		
Nursing & Midwifery	0.0%	0.0%	0.0%	0.0%	0.0%		#DIV/0
Health & Social Care Professionals	4.7%	0.5%	5.2%	1.6%	6.8%	76.5%	23.5%
Management & Administrative	0.0%	0.0%	0.0%	2.4%	2.4%	0.0%	100.0%
General Support							
Patient & Client Care	4.1%	0.5%	4.6%	3.4%	8.0%	57.6%	42.4%

November 2021

Bros. of Charity, Limerick absence by Staff Category	Certified absence	Self-certified absence	Non Covid-19 absence	Covid-19 absence	Total absence rate	% Non Covid-19 absence	% Covid-19 absence
Bros. of Charity, Limerick (CHO 3)	5.4%	0.4%	5.8%	2.5%	8.2%	70.2%	29.8%
Medical & Dental	0.0%	0.0%	0.0%	0.0%	0.0%		
Nursing & Midwifery	5.2%	0.7%	5.8%	2.7%	8.5%	68.5%	31.5%
Health & Social Care Professionals	6.3%	0.1%	6.4%	1.8%	8.2%	78.1%	21.9%
Management & Administrative	0.9%	0.7%	1.6%	0.9%	2.5%	63.4%	36.6%
General Support	0.9%	0.4%	1.3%	0.4%	1.8%	75.0%	25.0%
Patient & Client Care	5.5%	0.4%	5.9%	2.8%	8.7%	67.9%	32.1%

November 2021

Bros. of Charity, Southern absence by Staff Category	Certified absence	Self-certified absence	Non Covid-19 absence	Covid-19 absence	Total absence rate	% Non Covid-19 absence	% Covid-19 absence
Bros. of Charity, Southern (CHO 4)	5.8%	0.7%	6.5%	2.4%	8.8%	73.1%	26.9%
Medical & Dental							
Nursing & Midwifery	7.1%	1.2%	8.3%	3.3%	11.6%	71.9%	28.1%
Health & Social Care Professionals	4.8%	0.6%	5.4%	3.2%	8.6%	62.9%	37.1%
Management & Administrative	1.1%	0.3%	1.4%	1.5%	2.9%	47.6%	52.4%
General Support	1.2%	0.7%	1.9%	0.0%	1.9%	100.0%	0.0%
Patient & Client Care	6.7%	0.6%	7.4%	2.1%	9.4%	78.3%	21.7%

November 2021

Bros. of Charity, Waterford absence by Staff Category	Certified absence	Self-certified absence	Non Covid-19 absence	Covid-19 absence	Total absence rate	% Non Covid-19 absence	% Covid-19 absence
Bros. of Charity, Waterford (CHO 5)	4.1%	0.6%	4.7%	3.1%	7.8%	60.3%	39.7%
Medical & Dental	13.0%	0.0%	13.0%	24.3%	37.3%	34.8%	65.2%
Nursing & Midwifery	4.2%	1.2%	5.4%	1.9%	7.3%	74.2%	25.8%
Health & Social Care Professionals	5.8%	0.6%	6.4%	5.1%	11.6%	55.7%	44.3%
Management & Administrative	1.7%	0.7%	2.4%	1.7%	4.1%	58.4%	41.6%
General Support	0.8%	1.7%	2.5%	0.6%	3.0%	81.8%	18.2%
Patient & Client Care	4.0%	0.5%	4.4%	2.9%	7.4%	60.0%	40.0%

November 2021

Bros. of Charity, West Region absence by Staff Category	Certified absence	Self-certified absence	Non Covid-19 absence	Covid-19 absence	Total absence rate	% Non Covid-19 absence	% Covid-19 absence
Bros. of Charity, West Region (CHO 2)	4.6%	0.6%	5.2%	2.4%	7.7%	68.1%	31.9%
Medical & Dental	0.0%	0.0%	0.0%	0.0%	0.0%		
Nursing & Midwifery	5.4%	0.6%	5.9%	2.0%	7.9%	75.0%	25.0%
Health & Social Care Professionals	5.9%	0.7%	6.6%	2.8%	9.4%	70.0%	30.0%
Management & Administrative	3.8%	0.2%	4.0%	0.8%	4.8%	83.7%	16.3%
General Support	3.8%	0.7%	4.6%	2.2%	6.8%	67.3%	32.7%
Patient & Client Care	4.1%	0.6%	4.6%	2.7%	7.3%	63.7%	36.3%

November 2021

Carriglea Cairde Services absence by Staff Category	Certified absence	Self-certified absence	Non Covid-19 absence	Covid-19 absence	Total absence rate	% Non Covid-19 absence	% Covid-19 absence
Carriglea Cairde Services (CHO 5)	3.5%	0.3%	3.8%	2.0%	5.8%	66.1%	33.9%
Medical & Dental							
Nursing & Midwifery	8.8%	0.7%	9.5%	2.4%	11.8%	80.0%	20.0%
Health & Social Care Professionals	6.0%	0.0%	6.0%	2.5%	8.5%	70.6%	29.4%
Management & Administrative	0.0%	0.0%	0.0%	0.0%	0.0%		#DIV/0
General Support	0.0%	0.8%	0.8%	0.0%	0.8%	100.0%	0.0%
Patient & Client Care	2.0%	0.3%	2.3%	2.0%	4.3%	53.0%	47.0%

November 2021

Central Remedial Clinic absence by Staff Category	Certified absence	Self-certified absence	Non Covid-19 absence	Covid-19 absence	Total absence rate	% Non Covid-19 absence	% Covid-19 absence
Central Remedial Clinic (CHO 9)	3.4%	0.5%	3.9%	1.3%	5.2%	74.8%	25.2%
Medical & Dental	0.0%	0.0%	0.0%	0.0%	0.0%		
Nursing & Midwifery	10.8%	2.7%	13.5%	4.2%	17.7%	76.3%	23.7%
Health & Social Care Professionals	1.4%	0.2%	1.6%	1.7%	3.2%	48.5%	51.5%
Management & Administrative	2.3%	0.3%	2.6%	0.0%	2.6%	100.0%	0.0%
General Support	9.0%	0.0%	9.0%	0.0%	9.0%	100.0%	0.0%
Patient & Client Care	5.7%	1.1%	6.8%	1.2%	8.0%	85.3%	14.7%

November 2021

Cheeverstown House absence by Staff Category	Certified absence	Self-certified absence	Non Covid-19 absence	Covid-19 absence	Total absence rate	% Non Covid-19 absence	% Covid-19 absence
Cheeverstown House (CHO 7)	8.4%	1.0%	9.5%	3.1%	12.6%	75.1%	24.9%
Medical & Dental	0.0%	0.0%	0.0%	0.0%	0.0%		
Nursing & Midwifery	8.5%	1.2%	9.7%	2.6%	12.2%	79.1%	20.9%
Health & Social Care Professionals	2.6%	0.5%	3.1%	1.8%	4.9%	63.3%	36.7%
Management & Administrative	4.3%	0.5%	4.8%	0.0%	4.8%	100.0%	0.0%
General Support	20.8%	0.2%	21.0%	2.8%	23.8%	88.4%	11.6%
Patient & Client Care	9.3%	1.4%	10.8%	5.1%	15.8%	68.0%	32.0%

November 2021

Children's Sunshine Home absence by Staff Category	Certified absence	Self-certified absence	Non Covid-19 absence	Covid-19 absence	Total absence rate	% Non Covid-19 absence	% Covid-19 absence
Children's Sunshine Home (CHO 6)	6.6%	0.7%	7.2%	4.7%	11.9%	60.7%	39.3%
Medical & Dental							
Nursing & Midwifery	8.3%	0.8%	9.2%	3.4%	12.5%	73.0%	27.0%
Health & Social Care Professionals	0.0%	0.0%	0.0%	0.0%	0.0%		#DIV/0
Management & Administrative	0.0%	0.0%	0.0%	0.0%	0.0%		#DIV/0
General Support	0.0%	0.0%	0.0%	0.0%	0.0%		
Patient & Client Care	7.3%	0.8%	8.1%	9.7%	17.7%	45.6%	54.4%

November 2021

Cope Foundation absence by Staff Category	Certified absence	Self-certified absence	Non Covid-19 absence	Covid-19 absence	Total absence rate	% Non Covid-19 absence	% Covid-19 absence
Cope Foundation (CHO 4)	4.9%	3.6%	8.5%	3.1%	11.7%	73.2%	26.8%
Medical & Dental							
Nursing & Midwifery	4.2%	5.0%	9.3%	4.9%	14.2%	65.4%	34.6%
Health & Social Care Professionals	4.3%	1.7%	6.1%	1.4%	7.5%	81.0%	19.0%
Management & Administrative	1.5%	4.7%	6.2%	0.5%	6.7%	92.4%	7.6%
General Support	4.8%	1.7%	6.5%	2.3%	8.8%	73.7%	26.3%
Patient & Client Care	5.6%	3.5%	9.1%	3.1%	12.2%	74.8%	25.2%

November 2021

Daughters of Charity, Dublin absence by Staff Category	Certified absence	Self-certified absence	Non Covid-19 absence	Covid-19 absence	Total absence rate	% Non Covid-19 absence	% Covid-19 absence
Daughters of Charity, Dublin (CHO 9)	3.2%	0.6%	3.8%	2.8%	6.6%	57.5%	42.5%
Medical & Dental	18.6%	0.0%	18.6%	0.0%	18.6%	100.0%	0.0%
Nursing & Midwifery	2.3%	0.5%	2.8%	3.1%	5.9%	47.8%	52.2%
Health & Social Care Professionals	4.3%	0.7%	5.0%	4.6%	9.6%	52.0%	48.0%
Management & Administrative	2.0%	0.0%	2.0%	1.2%	3.2%	62.1%	37.9%
General Support	1.7%	0.9%	2.6%	1.9%	4.5%	58.4%	41.6%
Patient & Client Care	3.4%	0.7%	4.1%	2.0%	6.1%	67.1%	32.9%

November 2021

Daughters of Charity, Limerick absence by Staff Category	Certified absence	Self-certified absence	Non Covid-19 absence	Covid-19 absence	Total absence rate	% Non Covid-19 absence	% Covid-19 absence
Daughters of Charity, Limerick (CHO 3)	3.6%	0.2%	3.8%	2.8%	6.6%	57.8%	42.2%
Medical & Dental							
Nursing & Midwifery	3.8%	0.2%	4.0%	2.8%	6.8%	58.9%	41.1%
Health & Social Care Professionals	2.4%	0.6%	2.9%	1.1%	4.1%	72.0%	28.0%
Management & Administrative	0.3%	0.0%	0.3%	7.9%	8.2%	4.2%	95.8%
General Support	5.1%	0.3%	5.4%	2.9%	8.3%	65.1%	34.9%
Patient & Client Care	3.8%	0.2%	4.0%	2.7%	6.7%	60.2%	39.8%

November 2021

Daughters of Charity, Roscrea absence by Staff Category	Certified absence	Self-certified absence	Non Covid-19 absence	Covid-19 absence	Total absence rate	% Non Covid-19 absence	% Covid-19 absence
Daughters of Charity, Roscrea (CHO 3)	4.2%	0.5%	4.7%	3.9%	8.6%	55.0%	45.0%
Medical & Dental							
Nursing & Midwifery	3.6%	0.0%	3.6%	2.3%	5.9%	61.2%	38.8%
Health & Social Care Professionals	6.6%	0.4%	7.0%	1.5%	8.5%	81.9%	18.1%
Management & Administrative	0.6%	0.0%	0.6%	0.0%	0.6%	100.0%	0.0%
General Support	6.7%	0.0%	6.7%	2.6%	9.3%	72.1%	27.9%
Patient & Client Care	4.1%	0.7%	4.7%	4.9%	9.6%	49.3%	50.7%

November 2021

Incorporated Orthopaedic Hospital absence by Staff Category	Certified absence	Self-certified absence	Non Covid-19 absence	Covid-19 absence	Total absence rate	% Non Covid-19 absence	% Covid-19 absence
Incorporated Orthopaedic Hospital (CHO 9)	3.4%	1.2%	4.6%	2.8%	7.4%	61.8%	38.2%
Medical & Dental	2.6%	0.0%	2.6%	4.5%	7.1%	36.4%	63.6%
Nursing & Midwifery	2.8%	1.0%	3.8%	1.2%	5.1%	75.6%	24.4%
Health & Social Care Professionals	2.0%	0.1%	2.1%	5.8%	7.9%	26.9%	73.1%
Management & Administrative	0.0%	1.1%	1.1%	2.8%	4.0%	28.4%	71.6%
General Support	1.0%	3.7%	4.6%	2.6%	7.2%	64.5%	35.5%
Patient & Client Care	8.0%	0.7%	8.7%	2.9%	11.5%	75.1%	24.9%

November 2021

Kare, Newbridge, Co Kildare absence by Staff Category	Certified absence	Self-certified absence	Non Covid-19 absence	Covid-19 absence	Total absence rate	% Non Covid-19 absence	% Covid-19 absence
Kare, Newbridge, Co Kildare (CHO 7)	5.0%	0.6%	5.6%	3.1%	8.7%	64.7%	35.3%
Medical & Dental							
Nursing & Midwifery	2.3%	0.0%	2.3%	3.1%	5.4%	41.9%	58.1%
Health & Social Care Professionals	3.7%	0.5%	4.2%	2.4%	6.6%	63.8%	36.2%
Management & Administrative	8.5%	0.4%	8.9%	0.8%	9.6%	92.2%	7.8%
General Support	0.0%	0.0%	0.0%	0.0%	0.0%		
Patient & Client Care	5.5%	0.7%	6.3%	3.8%	10.0%	62.5%	37.5%

November 2021

Leopardstown Park Hospital absence by Staff Category	Certified absence	Self-certified absence	Non Covid-19 absence	Covid-19 absence	Total absence rate	% Non Covid-19 absence	% Covid-19 absence
Leopardstown Park Hospital (CHO 6)	4.8%	0.7%	5.5%	2.6%	8.1%	67.8%	32.2%
Medical & Dental							
Nursing & Midwifery	5.7%	0.7%	6.4%	2.2%	8.6%	74.5%	25.5%
Health & Social Care Professionals	5.5%	0.0%	5.5%	4.4%	10.0%	55.4%	44.6%
Management & Administrative	0.8%	0.0%	0.8%	1.6%	2.4%	33.3%	66.7%
General Support	8.3%	0.3%	8.5%	2.6%	11.1%	76.9%	23.1%
Patient & Client Care	3.5%	1.0%	4.5%	2.9%	7.4%	60.9%	39.1%

November 2021

Muiriosa Foundation, Laois/Offaly absence by Staff Category	Certified absence	Self-certified absence	Non Covid-19 absence	Covid-19 absence	Total absence rate	% Non Covid-19 absence	% Covid-19 absence
Muiriosa Foundation, Laois/Offaly (CHO 8)	4.4%	0.3%	4.7%	4.0%	8.7%	54.1%	45.9%
Medical & Dental							
Nursing & Midwifery	4.5%	0.3%	4.8%	5.1%	9.8%	48.5%	51.5%
Health & Social Care Professionals	4.6%	0.4%	5.0%	4.7%	9.8%	51.5%	48.5%
Management & Administrative	0.0%	0.0%	0.0%	0.0%	0.0%		#DIV/0
General Support	22.0%	0.0%	22.0%	0.0%	22.0%	100.0%	0.0%
Patient & Client Care	4.2%	0.4%	4.6%	3.6%	8.2%	55.8%	44.2%

November 2021

Muiriosa Foundation, Longford/Westmeath absence by Staff Category	Certified absence	Self-certified absence	Non Covid-19 absence	Covid-19 absence	Total absence rate	% Non Covid-19 absence	% Covid-19 absence
Muiriosa Foundation, Longford/Westmeath (CHO 8)	3.4%	0.1%	3.5%	1.6%	5.1%	68.3%	31.7%
Medical & Dental							
Nursing & Midwifery	0.0%	0.0%	0.0%	1.1%	1.1%	0.0%	100.0%
Health & Social Care Professionals	4.6%	0.2%	4.8%	1.8%	6.6%	72.7%	27.3%
Management & Administrative	1.5%	0.5%	2.0%	0.0%	2.0%	100.0%	0.0%
General Support	0.0%	0.0%	0.0%	0.0%	0.0%		
Patient & Client Care	3.0%	0.0%	3.1%	1.7%	4.8%	64.2%	35.8%

November 2021

Muiriosa Foundation, South Kildare absence by Staff Category	Certified absence	Self-certified absence	Non Covid-19 absence	Covid-19 absence	Total absence rate	% Non Covid-19 absence	% Covid-19 absence
Muiriosa Foundation, South Kildare (CHO 8)	4.2%	0.5%	4.8%	1.6%	6.4%	75.0%	25.0%
Medical & Dental							
Nursing & Midwifery	4.9%	1.4%	6.2%	2.3%	8.5%	73.0%	27.0%
Health & Social Care Professionals	2.1%	0.4%	2.5%	0.9%	3.4%	73.5%	26.5%
Management & Administrative	19.2%	0.0%	19.2%	1.3%	20.5%	93.5%	6.5%
General Support	0.5%	0.7%	1.2%	2.1%	3.3%	36.0%	64.0%
Patient & Client Care	3.2%	0.5%	3.6%	1.9%	5.5%	66.1%	33.9%

November 2021

Peamount Hospital (Newcastle) absence by Staff Category	Certified absence	Self-certified absence	Non Covid-19 absence	Covid-19 absence	Total absence rate	% Non Covid-19 absence	% Covid-19 absence
Peamount Hospital (Newcastle) (CHO 7)	4.2%	0.9%	5.1%	3.2%	8.3%	61.3%	38.7%
Medical & Dental	0.0%	0.0%	0.0%	2.7%	2.7%	0.0%	100.0%
Nursing & Midwifery	5.2%	1.5%	6.7%	1.2%	8.0%	84.5%	15.5%
Health & Social Care Professionals	3.8%	0.7%	4.5%	3.6%	8.1%	55.8%	44.2%
Management & Administrative	1.9%	0.3%	2.2%	6.4%	8.5%	25.5%	74.5%
General Support	5.2%	0.5%	5.7%	2.6%	8.3%	68.7%	31.3%
Patient & Client Care	4.0%	0.8%	4.8%	3.9%	8.6%	55.4%	44.6%

November 2021

Royal Hospital, Donnybrook, Dublin absence by Staff Category	Certified absence	Self-certified absence	Non Covid-19 absence	Covid-19 absence	Total absence rate	% Non Covid-19 absence	% Covid-19 absence
Royal Hospital, Donnybrook, Dublin (CHO 6)	4.7%	1.1%	5.8%	4.0%	9.9%	59.1%	40.9%
Medical & Dental	0.0%	0.0%	0.0%	0.0%	0.0%		
Nursing & Midwifery	7.1%	0.8%	7.9%	6.5%	14.4%	54.9%	45.1%
Health & Social Care Professionals	3.3%	0.3%	3.5%	4.4%	8.0%	44.4%	55.6%
Management & Administrative	1.4%	0.0%	1.4%	3.3%	4.7%	30.2%	69.8%
General Support	7.7%	1.0%	8.7%	0.9%	9.6%	90.4%	9.6%
Patient & Client Care	2.2%	2.3%	4.5%	2.8%	7.3%	61.4%	38.6%

November 2021

Stewart's Hospital, (Palmerstown) absence by Staff Category	Certified absence	Self-certified absence	Non Covid-19 absence	Covid-19 absence	Total absence rate	% Non Covid-19 absence	% Covid-19 absence
Stewart's Hospital, (Palmerstown) (CHO 7)	5.9%	0.7%	6.6%	1.6%	8.2%	80.0%	20.0%
Medical & Dental							
Nursing & Midwifery	5.8%	0.5%	6.3%	1.0%	7.3%	86.3%	13.7%
Health & Social Care Professionals	2.7%	0.2%	2.8%	1.6%	4.5%	63.4%	36.6%
Management & Administrative	1.3%	0.2%	1.5%	2.1%	3.6%	42.4%	57.6%
General Support	4.2%	0.3%	4.4%	0.9%	5.4%	82.7%	17.3%
Patient & Client Care	6.8%	0.9%	7.6%	1.8%	9.4%	81.0%	19.0%

November 2021

St. John of God, Drumcar absence by Staff Category	Certified absence	Self-certified absence	Non Covid-19 absence	Covid-19 absence	Total absence rate	% Non Covid-19 absence	% Covid-19 absence
St. John of God, Drumcar (CHO 8)	4.4%	0.7%	5.1%	2.3%	7.4%	68.4%	31.6%
Medical & Dental	0.0%	0.0%	0.0%	0.0%	0.0%		
Nursing & Midwifery	2.5%	2.5%	5.1%	11.3%	16.4%	31.0%	69.0%
Health & Social Care Professionals	2.7%	0.5%	3.2%	0.4%	3.6%	87.8%	12.2%
Management & Administrative	0.0%	0.2%	0.2%	0.1%	0.4%	65.2%	34.8%
General Support	0.0%	0.2%	0.2%	0.0%	0.2%	100.0%	0.0%
Patient & Client Care	5.7%	0.5%	6.2%	1.6%	7.8%	79.3%	20.7%

November 2021

St. John of God (IDS) absence by Staff Category	Certified absence	Self-certified absence	Non Covid-19 absence	Covid-19 absence	Total absence rate	% Non Covid-19 absence	% Covid-19 absence
St. John of God (IDS) (CHO 6)	3.2%	0.4%	3.6%	1.7%	5.3%	67.4%	32.6%
Medical & Dental	0.0%	0.0%	0.0%	0.0%	0.0%		
Nursing & Midwifery	4.0%	0.3%	4.3%	0.3%	4.6%	93.4%	6.6%
Health & Social Care Professionals	2.5%	0.6%	3.0%	3.1%	6.2%	49.2%	50.8%
Management & Administrative	0.8%	0.2%	1.0%	0.0%	1.0%	100.0%	0.0%
General Support	5.9%	0.8%	6.7%	0.0%	6.7%	100.0%	0.0%
Patient & Client Care	4.2%	0.3%	4.5%	1.5%	6.0%	75.3%	24.7%

November 2021

St. John of God, Kerry absence by Staff Category	Certified absence	Self-certified absence	Non Covid-19 absence	Covid-19 absence	Total absence rate	% Non Covid-19 absence	% Covid-19 absence
St. John of God, Kerry (CHO 4)	5.7%	0.5%	6.2%	4.1%	10.3%	60.1%	39.9%
Medical & Dental							
Nursing & Midwifery	8.4%	0.3%	8.7%	7.3%	16.1%	54.3%	45.7%
Health & Social Care Professionals	9.0%	0.7%	9.8%	3.1%	12.9%	75.8%	24.2%
Management & Administrative	8.4%	0.3%	8.7%	1.9%	10.6%	81.9%	18.1%
General Support	1.3%	0.5%	1.8%	5.3%	7.1%	25.1%	74.9%
Patient & Client Care	4.0%	0.5%	4.5%	3.2%	7.7%	58.3%	41.7%

November 2021

St. John of God Liffey Services absence by Staff Category	Certified absence	Self-certified absence	Non Covid-19 absence	Covid-19 absence	Total absence rate	% Non Covid-19 absence	% Covid-19 absence
St. John of God Liffey Services (CHO 7)	3.2%	0.4%	3.6%	1.3%	4.9%	74.3%	25.7%
Medical & Dental	0.0%	0.0%	0.0%	0.0%	0.0%		
Nursing & Midwifery	2.7%	0.8%	3.5%	0.4%	3.9%	89.5%	10.5%
Health & Social Care Professionals	1.7%	0.3%	2.0%	1.2%	3.3%	62.1%	37.9%
Management & Administrative	8.6%	0.0%	8.6%	0.7%	9.3%	92.5%	7.5%
General Support	1.1%	0.2%	1.4%	2.6%	3.9%	34.6%	65.4%
Patient & Client Care	4.5%	0.5%	5.0%	1.5%	6.5%	76.9%	23.1%

November 2021

St. Michael's House, Dublin absence by Staff Category	Certified absence	Self-certified absence	Non Covid-19 absence	Covid-19 absence	Total absence rate	% Non Covid-19 absence	% Covid-19 absence
St. Michael's House, Dublin (CHO 9)	4.9%	0.3%	5.3%	1.5%	6.8%	77.7%	22.3%
Medical & Dental	0.0%	0.4%	0.4%	0.0%	0.4%	100.0%	0.0%
Nursing & Midwifery	5.3%	0.4%	5.7%	1.4%	7.2%	79.8%	20.2%
Health & Social Care Professionals	4.9%	0.4%	5.3%	1.7%	7.0%	75.9%	24.1%
Management & Administrative	3.6%	0.2%	3.8%	0.5%	4.2%	89.3%	10.7%
General Support	8.7%	0.4%	9.1%	0.0%	9.1%	100.0%	0.0%
Patient & Client Care	4.4%	0.3%	4.7%	1.8%	6.5%	72.4%	27.6%

November 2021

St. Patrick's, Kilkenny absence by Staff Category	Certified absence	Self-certified absence	Non Covid-19 absence	Covid-19 absence	Total absence rate	% Non Covid-19 absence	% Covid-19 absence
St. Patrick's, Kilkenny (CHO 5)	6.1%	0.3%	6.4%	3.6%	10.0%	63.8%	36.2%
Medical & Dental							
Nursing & Midwifery	6.6%	0.4%	7.0%	3.3%	10.3%	67.6%	32.4%
Health & Social Care Professionals	2.0%	0.0%	2.0%	6.4%	8.4%	23.4%	76.6%
Management & Administrative	8.8%	0.2%	9.1%	3.8%	12.8%	70.5%	29.5%
General Support	11.7%	0.0%	11.7%	0.0%	11.7%	100.0%	0.0%
Patient & Client Care	6.4%	0.3%	6.7%	3.2%	9.9%	67.4%	32.6%

November 2021

Sunbeam House Services absence by Staff Category	Certified absence	Self-certified absence	Non Covid-19 absence	Covid-19 absence	Total absence rate	% Non Covid-19 absence	% Covid-19 absence
Sunbeam House Services (CHO 6)	3.6%	0.6%	4.2%	1.9%	6.1%	68.5%	31.5%
Medical & Dental							
Nursing & Midwifery	5.6%	0.7%	6.3%	1.3%	7.6%	83.1%	16.9%
Health & Social Care Professionals	3.6%	0.6%	4.2%	1.9%	6.1%	68.4%	31.6%
Management & Administrative	1.8%	0.2%	2.0%	0.7%	2.7%	75.0%	25.0%
General Support	1.0%	0.5%	1.5%	6.1%	7.5%	19.3%	80.7%
Patient & Client Care	3.7%	0.8%	4.4%	2.2%	6.6%	66.9%	33.1%

Social Care

Year/ month	Medical & Dental	Nursing & Midwifery	Health & Social Care Professionals	Management & Administrative	General Support	Patient & Client Care	Certified absence	Self-certified absence	Non Covid-19 absence	Covid-19 absence	Total absence rate
2021	3.9%	6.9%	5.4%	3.6%	6.0%	6.9%	4.4%	0.5%	4.9%	1.4%	6.3%
Nov 2021	3.7%	9.1%	6.9%	5.9%	7.2%	8.6%	4.9%	0.7%	5.6%	2.4%	8.1%
Oct 2021	3.0%	7.7%	5.7%	4.6%	6.6%	7.0%	4.8%	0.5%	5.3%	1.3%	6.6%
Sep 2021	7.7%	6.9%	5.2%	4.2%	5.5%	6.6%	4.6%	0.5%	5.1%	1.0%	6.1%
Aug 2021	10.8%	6.0%	4.8%	4.0%	5.0%	6.6%	4.6%	0.4%	5.0%	0.9%	5.9%
Jul 2021	5.2%	5.8%	4.7%	3.5%	6.2%	6.0%	4.5%	0.4%	4.9%	0.6%	5.5%
Jun 2021	3.2%	5.4%	4.3%	3.0%	5.2%	5.8%	4.4%	0.5%	4.9%	0.6%	5.5%
May 2021	2.5%	5.2%	4.2%	2.3%	4.5%	5.7%	3.9%	0.4%	4.3%	0.7%	5.0%
Apr 2021	2.0%	5.8%	4.5%	2.7%	5.4%	5.5%	3.9%	0.4%	4.3%	0.8%	5.1%
Mar 2021	2.2%	5.7%	4.9%	3.1%	5.3%	6.1%	4.0%	0.5%	4.5%	1.0%	5.5%
Feb 2021	1.3%	7.5%	6.1%	2.9%	6.1%	7.7%	4.4%	0.5%	4.9%	2.0%	6.9%
Jan 2021	0.9%	10.5%	8.1%	3.5%	9.5%	10.5%	4.6%	0.3%	4.9%	4.5%	9.4%
2020	3.1%	7.3%	5.0%	2.9%	6.6%	6.8%	4.5%	0.4%	4.9%	1.4%	6.2%
Dec 2020	2.6%	6.5%	4.1%	3.1%	4.9%	6.2%	4.2%	0.4%	4.6%	1.0%	5.5%
Nov 2020	3.6%	5.7%	3.8%	2.9%	5.5%	5.7%	4.0%	0.3%	4.3%	0.8%	5.1%
Oct 2020	3.8%	7.0%	5.0%	2.6%	6.8%	6.7%	4.2%	0.4%	4.6%	1.5%	6.1%
Sep 2020	3.0%	7.0%	4.7%	2.3%	6.1%	6.2%	4.3%	0.4%	4.6%	1.1%	5.8%
Aug 2020	3.7%	6.3%	4.4%	2.5%	4.8%	5.9%	4.4%	0.3%	4.7%	0.6%	5.3%
Jul 2020	1.1%	6.1%	4.0%	2.1%	5.9%	5.9%	4.4%	0.4%	4.8%	0.5%	5.3%
Jun 2020	0.9%	6.0%	3.7%	1.9%	6.1%	5.5%	4.0%	0.3%	4.3%	0.7%	5.0%
May 2020	2.1%	8.7%	5.6%	2.6%	7.6%	7.9%	4.5%	0.2%	4.7%	2.5%	7.2%
Apr 2020	2.6%	13.6%	8.3%	3.4%	12.8%	12.0%	5.2%	0.4%	5.7%	5.3%	10.9%
Mar 2020	3.1%	9.0%	7.1%	4.7%	7.9%	8.5%	5.1%	0.4%	5.5%	2.6%	8.0%
Feb 2020	4.3%	5.6%	4.4%	3.5%	5.0%	5.3%	4.6%	0.5%	5.0%		5.0%
Jan 2020	4.6%	6.0%	5.0%	3.5%	6.2%	5.9%	5.0%	0.6%	5.6%		5.6%
2019	1.3%	5.6%	4.2%	3.3%	4.8%	5.2%	4.4%	0.5%	4.9%		4.9%
Dec 2019	3.7%	6.0%	4.7%	3.5%	5.4%	4.8%	4.4%	0.5%	4.9%		4.9%
Nov 2019	1.5%	6.1%	3.8%	3.0%	5.0%	5.4%	4.5%	0.5%	5.0%		5.0%
Oct 2019	0.5%	6.0%	4.2%	2.9%	5.3%	5.7%	4.7%	0.5%	5.2%		5.2%
Sep 2019	1.3%	5.6%	4.5%	3.5%	5.3%	5.2%	4.5%	0.5%	4.9%		4.9%
Aug 2019	1.9%	5.7%	4.6%	3.4%	4.5%	5.4%	4.7%	0.4%	5.0%		5.0%
Jul 2019	1.5%	5.3%	4.1%	3.5%	4.8%	5.1%	4.5%	0.3%	4.8%		4.8%

Jun 2019	2.5%	5.4%	3.9%	2.8%	4.1%	5.3%	4.4%	0.4%	4.8%		4.8%
May 2019	3.9%	5.8%	4.3%	2.7%	4.3%	5.2%	4.4%	0.5%	4.9%		4.9%
Apr 2019	0.1%	5.5%	3.9%	3.1%	4.9%	5.2%	4.3%	0.4%	4.7%		4.7%
Mar 2019	0.3%	5.0%	3.7%	3.5%	4.7%	4.9%	4.1%	0.4%	4.5%		4.5%
Feb 2019	1.0%	5.6%	3.9%	3.9%	4.7%	4.9%	4.3%	0.5%	4.7%		4.7%
Jan 2019	0.3%	5.6%	4.5%	4.2%	5.3%	5.5%	4.6%	0.5%	5.2%		5.2%
2018	1.9%	4.6%	4.2%	3.4%	4.2%	4.8%	4.1%	0.4%	4.5%		4.5%

Social Care

Year/ month	CHO 1	CHO 2	CHO 3	CHO 4	CHO 5	CHO 6	CHO 7	CHO 8	CHO 9	other Comm.	Community Services absence rate	Certified absence	Self-certified absence	Non Covid-19 absence	Covid-19 absence	Total absence rate
2021	8.3%	5.7%	5.5%	6.9%	6.8%	5.8%	6.4%	6.6%	5.6%	0.2%	6.3%	4.4%	0.5%	4.9%	1.4%	6.3%
Nov 2021	9.8%	6.7%	7.6%	10.3%	8.2%	6.7%	7.9%	8.0%	7.1%		8.1%	4.9%	0.7%	5.6%	2.4%	8.05%
Oct 2021	8.7%	5.4%	6.4%	8.1%	6.7%	5.2%	6.6%	6.9%	5.9%		6.6%	4.8%	0.5%	5.3%	1.3%	6.62%
Sep 2021	8.3%	4.6%	5.4%	6.9%	6.0%	6.3%	6.3%	6.8%	5.0%	1.9%	6.1%	4.6%	0.5%	5.1%	1.0%	6.12%
Aug 2021	8.9%	4.6%	4.8%	6.0%	6.4%	5.7%	6.2%	6.1%	4.9%		5.9%	4.6%	0.4%	5.0%	0.9%	5.86%
Jul 2021	8.3%	4.4%	4.1%	5.4%	5.1%	6.1%	5.8%	6.3%	4.9%		5.5%	4.5%	0.4%	4.9%	0.6%	5.48%
Jun 2021	7.1%	4.8%	4.5%	5.7%	5.3%	5.0%	5.1%	5.3%	6.8%		5.5%	4.4%	0.5%	4.9%	0.6%	5.48%
May 2021	6.6%	4.6%	4.7%	5.5%	4.8%	4.3%	5.1%	5.0%	4.3%		5.0%	3.9%	0.4%	4.3%	0.7%	4.96%
Apr 2021	6.2%	4.5%	3.9%	5.1%	5.3%	5.0%	5.8%	5.6%	4.6%		5.1%	3.9%	0.4%	4.3%	0.8%	5.13%
Mar 2021	7.1%	6.2%	4.5%	5.4%	6.4%	4.5%	5.5%	5.9%	4.7%		5.5%	4.0%	0.5%	4.5%	1.0%	5.48%
Feb 2021	8.5%	7.6%	5.9%	6.7%	9.0%	6.2%	6.6%	7.7%	5.6%		6.9%	4.4%	0.5%	4.9%	2.0%	6.89%
Jan 2021	12.3%	9.0%	8.8%	10.1%	11.3%	8.9%	9.6%	8.7%	7.8%		9.4%	4.6%	0.3%	4.9%	4.5%	9.40%
2020	7.1%	5.6%	5.2%	6.2%	6.6%	4.7%	7.3%	6.7%	5.8%	0.0%	6.2%	4.5%	0.4%	4.9%	1.4%	6.2%
Dec 2020	7.6%	5.7%	4.7%	5.4%	6.9%	3.8%	6.1%	5.6%	4.5%	0.3%	5.5%	4.2%	0.4%	4.6%	1.0%	5.51%
Nov 2020	7.2%	5.2%	4.9%	5.0%	5.5%	3.5%	5.5%	5.4%	4.1%		5.1%	4.0%	0.3%	4.3%	0.8%	5.09%
Oct 2020	8.6%	5.8%	5.3%	6.5%	5.7%	3.7%	7.2%	6.5%	5.1%		6.1%	4.2%	0.4%	4.6%	1.5%	6.08%
Sep 2020	7.6%	5.3%	5.0%	5.3%	5.7%	4.1%	6.9%	6.1%	5.3%		5.8%	4.3%	0.4%	4.6%	1.1%	5.76%
Aug 2020	7.0%	4.1%	5.6%	5.3%	5.5%	4.0%	5.7%	5.7%	4.8%		5.3%	4.4%	0.3%	4.7%	0.6%	5.32%
Jul 2020	6.1%	4.1%	3.9%	4.6%	6.3%	4.4%	6.1%	6.2%	5.2%		5.3%	4.4%	0.4%	4.8%	0.5%	5.26%
Jun 2020	5.6%	4.3%	4.8%	4.9%	5.4%	3.7%	5.5%	5.4%	4.7%		5.0%	4.0%	0.3%	4.3%	0.7%	5.00%
May 2020	6.2%	6.2%	5.9%	7.7%	6.9%	5.4%	9.2%	8.4%	6.5%		7.2%	4.5%	0.2%	4.7%	2.5%	7.19%
Apr 2020	8.8%	9.0%	6.0%	11.9%	10.2%	10.9%	15.8%	12.1%	9.9%		10.9%	5.2%	0.4%	5.7%	5.3%	10.91%
Mar 2020	9.2%	6.8%	6.8%	8.1%	7.7%	6.0%	9.6%	7.2%	8.5%		8.0%	5.1%	0.4%	5.5%	2.6%	8.01%
Feb 2020	5.5%	5.3%	4.4%	4.9%	6.0%	3.7%	4.9%	5.3%	5.2%		5.0%	4.6%	0.5%	5.0%		5.04%
Jan 2020	6.2%	6.3%	5.1%	5.3%	6.9%	4.0%	5.5%	6.4%	5.2%		5.6%	5.0%	0.6%	5.6%		5.59%
2019	7.2%	4.8%	4.4%	4.9%	5.4%	4.0%	4.6%	5.0%	4.6%		4.9%	4.4%	0.5%	4.9%		4.9%
Dec 2019	7.1%	5.0%	4.0%	5.3%	7.0%	3.0%	4.9%	5.0%	5.0%		4.9%	4.4%	0.5%	4.9%		4.94%
Nov 2019	6.3%	5.5%	4.8%	5.4%	6.4%	3.4%	4.5%	4.9%	4.6%		5.0%	4.5%	0.5%	5.0%		5.01%
Oct 2019	6.3%	5.8%	4.8%	5.6%	5.5%	5.0%	5.1%	5.3%	4.6%		5.2%	4.7%	0.5%	5.2%		5.24%
Sep 2019	6.4%	4.9%	4.2%	5.2%	5.5%	4.2%	4.4%	4.9%	4.8%		4.9%	4.5%	0.5%	4.9%		4.93%
Aug 2019	8.1%	5.0%	4.4%	4.7%	5.0%	5.0%	4.3%	5.5%	4.7%		5.0%	4.7%	0.4%	5.0%		5.04%
Jul 2019	7.6%	3.9%	4.3%	4.7%	4.9%	4.2%	4.2%	5.3%	4.5%		4.8%	4.5%	0.3%	4.8%		4.78%
Jun 2019	7.1%	4.1%	4.5%	4.4%	4.7%	4.3%	5.1%	5.0%	4.4%		4.8%	4.4%	0.4%	4.8%		4.82%
May 2019	6.9%	4.4%	4.2%	4.5%	5.2%	4.3%	5.1%	5.2%	4.4%		4.9%	4.4%	0.5%	4.9%		4.89%
Apr 2019	6.7%	4.7%	4.6%	4.7%	5.5%	4.4%	4.4%	4.3%	4.0%		4.7%	4.3%	0.4%	4.7%		4.69%
Mar 2019	7.4%	4.4%	4.1%	4.2%	4.6%	3.4%	4.3%	4.9%	4.0%		4.5%	4.1%	0.4%	4.5%		4.54%
Feb 2019	7.9%	4.5%	4.4%	4.5%	4.9%	3.5%	4.2%	4.5%	4.8%		4.7%	4.3%	0.5%	4.7%		4.73%
Jan 2019	8.3%	4.8%	4.7%	5.4%	5.2%	3.8%	4.7%	5.2%	4.9%		5.2%	4.6%	0.5%	5.2%		5.18%

