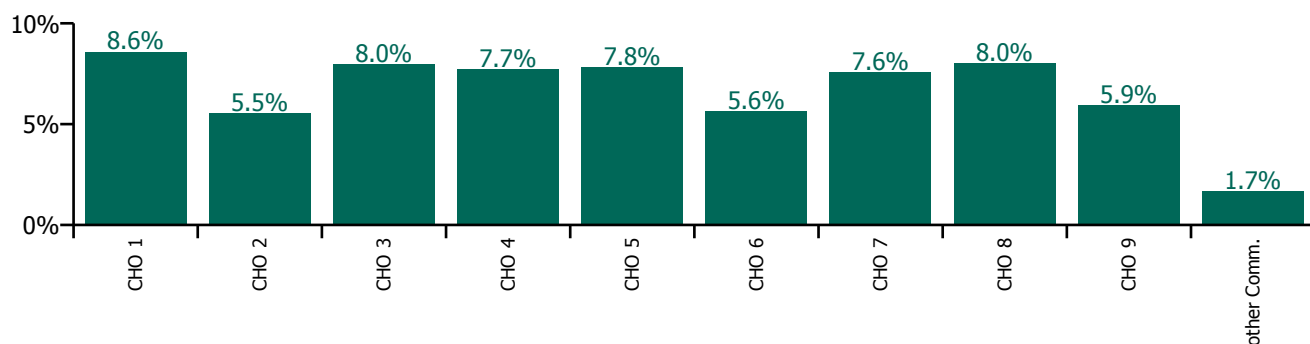


## October 2021

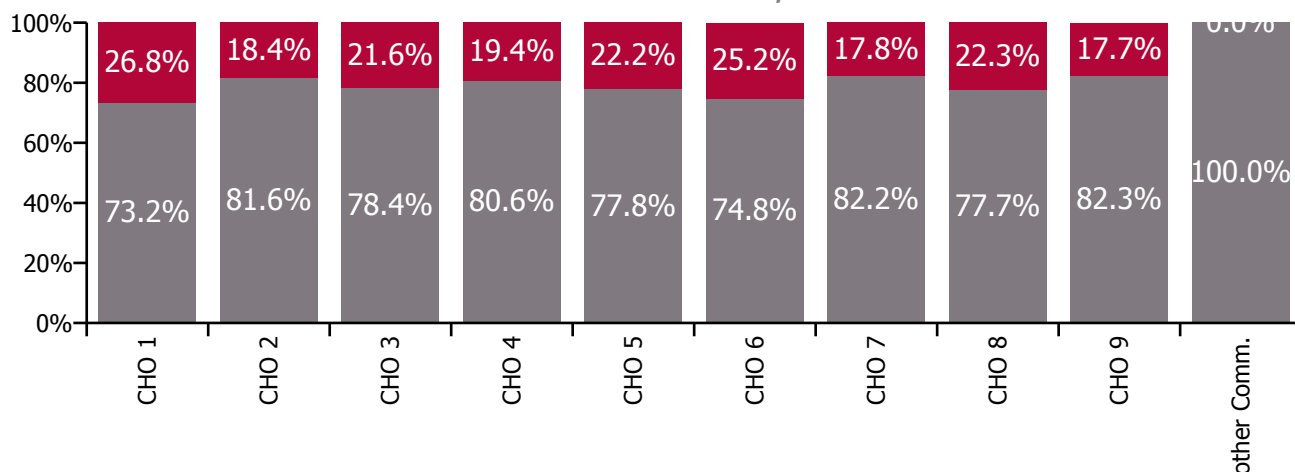
Health Service Absence Rate - by Staff Category: Oct 2021	Certified absence	Self-certified absence	Non Covid-19 absence	Covid-19 absence	Total absence rate	% Non Covid-19 absence	% Covid-19 absence
<b>Social Care</b>	<b>5.1%</b>	<b>0.6%</b>	<b>5.7%</b>	<b>1.5%</b>	<b>7.2%</b>	<b>79.1%</b>	<b>20.9%</b>
Medical & Dental	1.3%	0.1%	1.4%	0.0%	1.4%	97.4%	2.6%
Nursing & Midwifery	5.4%	0.6%	6.0%	1.8%	7.8%	76.4%	23.6%
Health & Social Care Professionals	4.0%	0.4%	4.5%	1.1%	5.6%	80.3%	19.7%
Management & Administrative	4.0%	0.3%	4.3%	0.5%	4.8%	89.3%	10.7%
General Support	5.4%	0.4%	5.8%	1.6%	7.4%	78.2%	21.8%
Patient & Client Care	5.5%	0.7%	6.2%	1.6%	7.8%	79.2%	20.8%

Health Service Absence Rate - Care Group by CHO: Oct 2021	Certified absence	Self-certified absence	Non Covid-19 absence	Covid-19 absence	Total absence rate	% Non Covid-19 absence	% Covid-19 absence
<b>Social Care</b>	<b>5.1%</b>	<b>0.6%</b>	<b>5.7%</b>	<b>1.5%</b>	<b>7.2%</b>	<b>79.1%</b>	<b>20.9%</b>
CHO 1	5.8%	0.4%	6.3%	2.3%	8.6%	73.2%	26.8%
CHO 2	4.2%	0.3%	4.5%	1.0%	5.5%	81.6%	18.4%
CHO 3	5.8%	0.5%	6.2%	1.7%	8.0%	78.4%	21.6%
CHO 4	5.3%	0.9%	6.2%	1.5%	7.7%	80.6%	19.4%
CHO 5	5.4%	0.7%	6.1%	1.7%	7.8%	77.8%	22.2%
CHO 6	3.7%	0.5%	4.2%	1.4%	5.6%	74.8%	25.2%
CHO 7	5.5%	0.7%	6.2%	1.3%	7.6%	82.2%	17.8%
CHO 8	5.7%	0.5%	6.2%	1.8%	8.0%	77.7%	22.3%
CHO 9	4.4%	0.5%	4.9%	1.0%	5.9%	82.3%	17.7%
Other Community Services	1.5%	0.2%	1.7%	0.0%	1.7%	100.0%	0.0%

**Total absence rate**

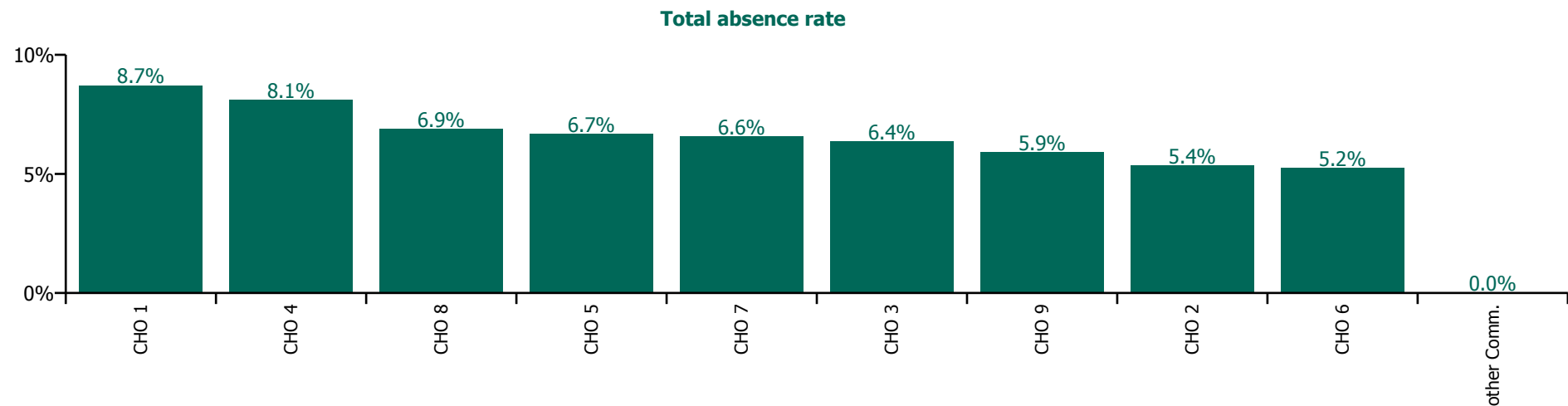


**% of Absence Non Covid-19 / Covid-19**

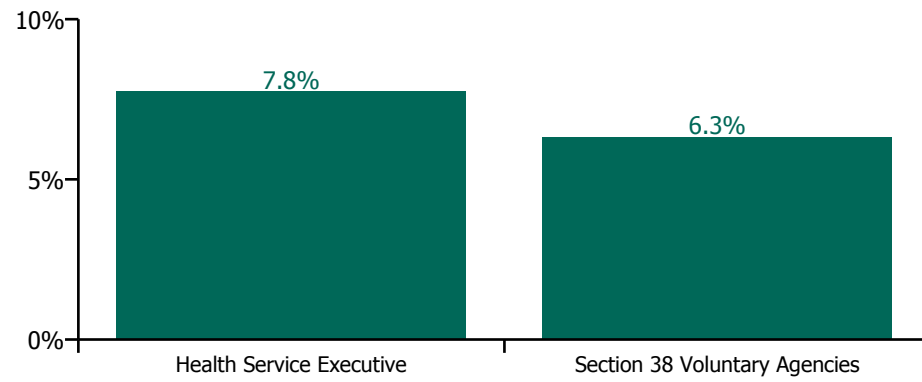


## October 2021

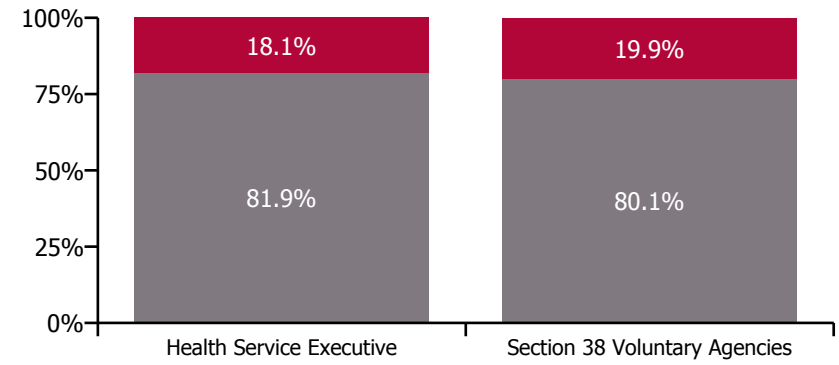
Health Service Absence Rate - by Hospital Group & Staff Category: Oct 2021	Medical & Dental	Nursing & Midwifery	Health & Social Care Professionals	Management & Administrative	General Support	Patient & Client Care	Certified absence	Self-certified absence	Non Covid-19 absence	Covid-19 absence	Total absence rate
<b>Social Care</b>	<b>3.0%</b>	<b>7.7%</b>	<b>5.7%</b>	<b>4.6%</b>	<b>6.6%</b>	<b>7.0%</b>	<b>4.8%</b>	<b>0.5%</b>	<b>5.3%</b>	<b>1.3%</b>	<b>6.6%</b>
CHO 1	0.0%	9.6%	2.5%	6.3%	10.8%	9.1%	6.0%	0.5%	6.5%	2.2%	8.7%
CHO 2	3.1%	5.8%	5.9%	2.7%	3.7%	5.5%	4.2%	0.3%	4.6%	0.8%	5.4%
CHO 3	0.0%	7.7%	5.7%	5.3%	7.7%	6.2%	4.2%	0.3%	4.6%	1.8%	6.4%
CHO 4	0.0%	11.0%	7.0%	4.3%	5.2%	8.4%	5.9%	1.2%	7.1%	1.0%	8.1%
CHO 5	2.1%	9.4%	7.4%	5.9%	6.0%	5.8%	4.3%	0.6%	5.0%	1.7%	6.7%
CHO 6	0.8%	8.1%	4.5%	3.8%	5.2%	5.3%	3.5%	0.5%	4.0%	1.2%	5.2%
CHO 7	0.0%	7.0%	5.3%	3.9%	8.4%	7.2%	4.8%	0.6%	5.5%	1.1%	6.6%
CHO 8	0.0%	7.5%	6.3%	6.8%	4.4%	7.1%	5.1%	0.4%	5.5%	1.3%	6.9%
CHO 9	5.1%	5.4%	5.5%	4.4%	7.3%	7.0%	4.5%	0.4%	4.8%	1.1%	5.9%
Other Community Services				0.0%			0.0%	0.0%	0.0%	0.0%	0.0%



**Total absence rate**



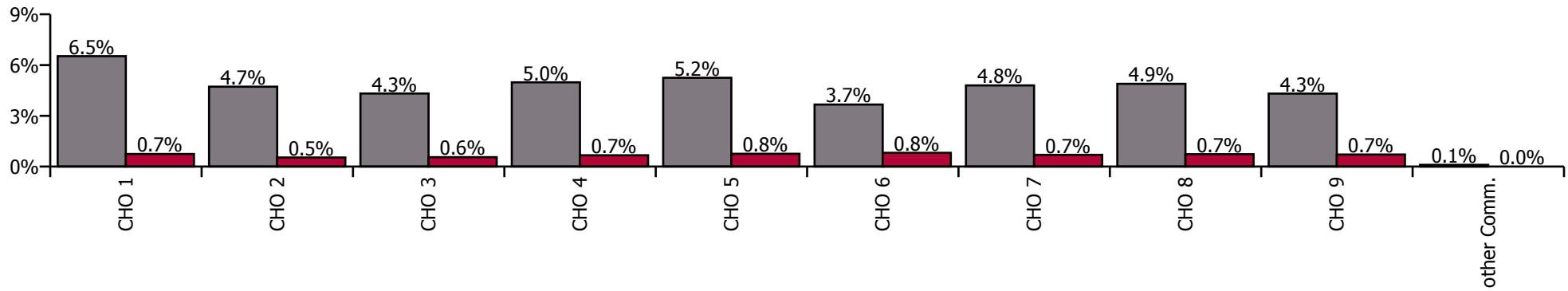
**Non Covid-19 & Covid-19 Absence**



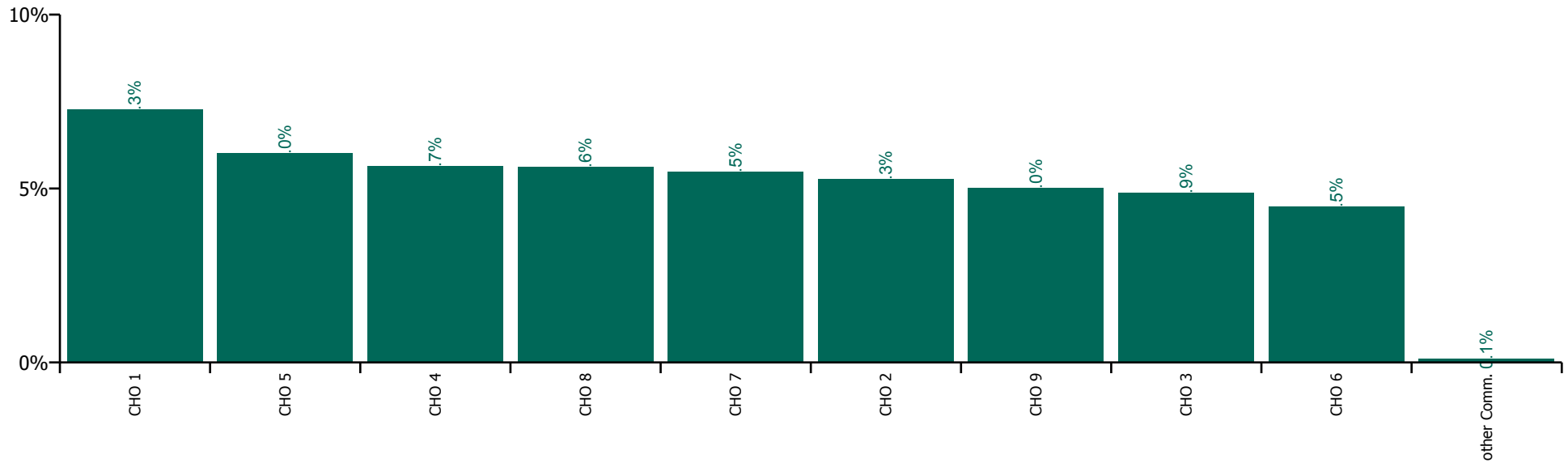
## October 2021

Health Service Absence Rate by Hospital: Oct 2021	Medical & Dental	Nursing & Midwifery	Health & Social Care Professionals	Management & Administrative	General Support	Patient & Client Care	Certified absence	Self-certified absence	Non Covid-19 absence	Covid-19 absence	Total absence rate
<b>Social Care</b>	<b>2.6%</b>	<b>6.1%</b>	<b>4.7%</b>	<b>3.2%</b>	<b>5.4%</b>	<b>5.9%</b>	<b>4.4%</b>	<b>0.4%</b>	<b>4.8%</b>	<b>0.7%</b>	<b>5.5%</b>
Health Service Executive	0.2%	8.5%	3.6%	3.3%	4.7%	7.6%	6.2%	0.3%	6.5%	0.7%	7.3%
<b>CHO 1</b>	<b>0.2%</b>	<b>8.5%</b>	<b>3.6%</b>	<b>3.3%</b>	<b>4.7%</b>	<b>7.6%</b>	<b>6.2%</b>	<b>0.3%</b>	<b>6.5%</b>	<b>0.7%</b>	<b>7.3%</b>
Health Service Executive	4.6%	7.9%	3.5%	1.2%	0.8%	5.0%	4.3%	0.2%	4.5%	0.5%	5.0%
Section 38 Voluntary Agencies	5.0%	5.4%	5.1%	3.1%	4.7%	5.7%	4.4%	0.3%	4.8%	0.5%	5.3%
<b>CHO 2</b>	<b>4.9%</b>	<b>5.9%</b>	<b>4.9%</b>	<b>2.8%</b>	<b>4.3%</b>	<b>5.6%</b>	<b>4.4%</b>	<b>0.3%</b>	<b>4.7%</b>	<b>0.5%</b>	<b>5.3%</b>
Health Service Executive			3.4%	4.8%	19.8%	5.7%	4.5%	0.3%	4.7%	0.4%	5.2%
Section 38 Voluntary Agencies	1.5%	5.5%	4.6%	2.5%	4.9%	4.8%	4.0%	0.3%	4.3%	0.6%	4.9%
<b>CHO 3</b>	<b>1.5%</b>	<b>5.5%</b>	<b>4.5%</b>	<b>3.2%</b>	<b>5.8%</b>	<b>4.9%</b>	<b>4.0%</b>	<b>0.3%</b>	<b>4.3%</b>	<b>0.6%</b>	<b>4.9%</b>
Health Service Executive	7.1%	5.3%	3.9%	2.1%	4.1%	4.8%	3.3%	0.6%	3.9%	0.5%	4.4%
Section 38 Voluntary Agencies	0.0%	6.8%	4.7%	3.1%	5.1%	6.1%	4.4%	0.7%	5.1%	0.7%	5.8%
<b>CHO 4</b>	<b>7.0%</b>	<b>6.6%</b>	<b>4.6%</b>	<b>2.9%</b>	<b>5.0%</b>	<b>6.0%</b>	<b>4.3%</b>	<b>0.7%</b>	<b>5.0%</b>	<b>0.7%</b>	<b>5.7%</b>
Health Service Executive	0.0%	7.5%	5.6%	5.6%	4.6%	7.7%	5.6%	0.5%	6.1%	0.7%	6.8%
Section 38 Voluntary Agencies	9.5%	6.6%	6.2%	4.5%	6.9%	5.7%	4.5%	0.6%	5.1%	0.8%	5.8%
<b>CHO 5</b>	<b>7.5%</b>	<b>6.9%</b>	<b>6.0%</b>	<b>4.8%</b>	<b>6.8%</b>	<b>5.9%</b>	<b>4.7%</b>	<b>0.5%</b>	<b>5.2%</b>	<b>0.8%</b>	<b>6.0%</b>
Health Service Executive	1.0%	7.8%	6.2%	5.6%	2.5%	9.2%	4.6%	0.5%	5.1%	2.6%	7.7%
Section 38 Voluntary Agencies	0.0%	4.5%	4.4%	2.3%	4.7%	4.6%	3.1%	0.5%	3.5%	0.7%	4.2%
<b>CHO 6</b>	<b>0.6%</b>	<b>5.0%</b>	<b>4.4%</b>	<b>2.5%</b>	<b>4.7%</b>	<b>5.0%</b>	<b>3.2%</b>	<b>0.5%</b>	<b>3.7%</b>	<b>0.8%</b>	<b>4.5%</b>
Health Service Executive		2.8%	5.6%	4.8%		4.3%	4.4%	0.3%	4.8%	0.4%	5.2%
Section 38 Voluntary Agencies	1.3%	5.9%	4.4%	3.0%	5.5%	6.1%	4.3%	0.5%	4.8%	0.7%	5.5%
<b>CHO 7</b>	<b>1.3%</b>	<b>5.9%</b>	<b>4.4%</b>	<b>3.1%</b>	<b>5.5%</b>	<b>6.1%</b>	<b>4.3%</b>	<b>0.5%</b>	<b>4.8%</b>	<b>0.7%</b>	<b>5.5%</b>
Health Service Executive	0.2%	10.0%	6.2%	6.0%	10.4%	10.8%	7.4%	0.5%	8.0%	1.2%	9.2%
Section 38 Voluntary Agencies	0.2%	4.7%	4.8%	2.9%	5.1%	4.8%	3.8%	0.3%	4.1%	0.6%	4.7%
<b>CHO 8</b>	<b>0.2%</b>	<b>6.0%</b>	<b>5.0%</b>	<b>4.1%</b>	<b>5.6%</b>	<b>6.0%</b>	<b>4.5%</b>	<b>0.4%</b>	<b>4.9%</b>	<b>0.7%</b>	<b>5.6%</b>
Health Service Executive	0.9%	7.7%	4.2%	3.0%	8.1%	8.4%	6.0%	0.4%	6.4%	0.9%	7.3%
Section 38 Voluntary Agencies	3.2%	4.6%	4.5%	3.0%	5.5%	5.4%	3.8%	0.3%	4.1%	0.7%	4.8%
<b>CHO 9</b>	<b>3.0%</b>	<b>5.2%</b>	<b>4.5%</b>	<b>3.0%</b>	<b>5.6%</b>	<b>5.8%</b>	<b>4.0%</b>	<b>0.3%</b>	<b>4.3%</b>	<b>0.7%</b>	<b>5.0%</b>
<b>Other Community Services</b>				<b>0.1%</b>			<b>0.1%</b>	<b>0.0%</b>	<b>0.1%</b>	<b>0.0%</b>	<b>0.1%</b>

Non Covid-19 / Covid-19 absence rates



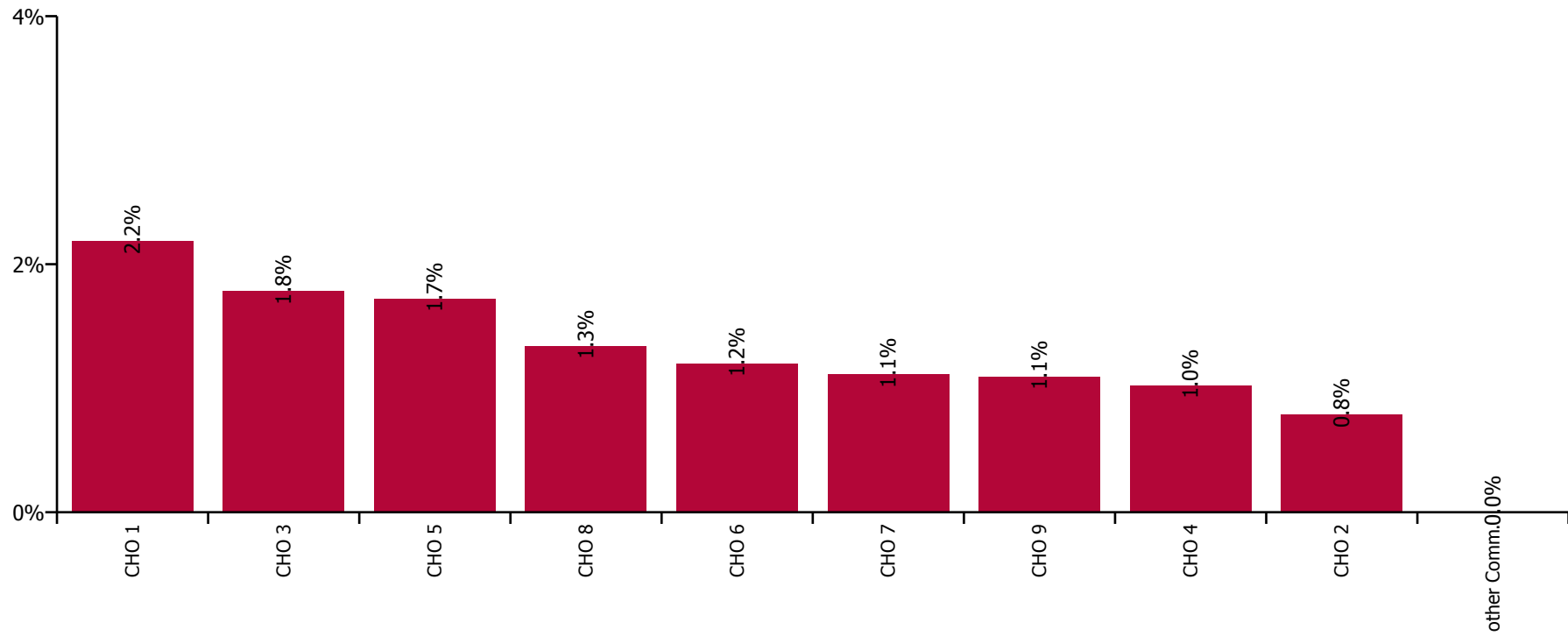
Total absence rate



## October 2021

Health Service Covid-19 Absence Rate - by Staff Category & Hospital: Oct 2021	Medical & Dental	Nursing & Midwifery	Health & Social Care Professionals	Management & Administrative	General Support	Patient & Client Care	Covid-19 absence	Non Covid-19 absence	Total absence rate
<b>Social Care</b>	<b>0.1%</b>	<b>1.6%</b>	<b>1.1%</b>	<b>4.6%</b>	<b>1.5%</b>	<b>1.4%</b>	<b>1.3%</b>	<b>5.3%</b>	<b>6.6%</b>
Health Service Executive	0.0%	2.0%	0.7%	6.3%	2.3%	2.6%	2.2%	6.5%	8.7%
<b>CHO 1</b>	<b>0.0%</b>	<b>2.0%</b>	<b>0.7%</b>	<b>6.3%</b>	<b>2.3%</b>	<b>2.6%</b>	<b>2.2%</b>	<b>6.5%</b>	<b>8.7%</b>
Health Service Executive	0.0%	0.8%	0.0%	1.6%	0.0%	0.2%	0.3%	2.5%	2.8%
Section 38 Voluntary Agencies	0.0%	1.0%	1.0%	3.0%	0.5%	0.9%	0.8%	4.8%	5.7%
<b>CHO 2</b>	<b>0.0%</b>	<b>0.9%</b>	<b>1.0%</b>	<b>2.7%</b>	<b>0.5%</b>	<b>0.8%</b>	<b>0.8%</b>	<b>4.6%</b>	<b>5.4%</b>
Health Service Executive			0.0%	13.1%	0.0%	0.0%	0.3%	7.8%	8.1%
Section 38 Voluntary Agencies	0.0%	2.2%	1.5%	1.4%	2.7%	2.0%	1.9%	4.4%	6.3%
<b>CHO 3</b>	<b>0.0%</b>	<b>2.2%</b>	<b>1.3%</b>	<b>5.3%</b>	<b>2.3%</b>	<b>1.9%</b>	<b>1.8%</b>	<b>4.6%</b>	<b>6.4%</b>
Health Service Executive	0.0%	2.1%	0.0%	1.6%	0.0%	0.4%	0.6%	5.0%	5.6%
Section 38 Voluntary Agencies		2.0%	0.7%	5.0%	1.7%	0.9%	1.1%	7.3%	8.4%
<b>CHO 4</b>	<b>0.0%</b>	<b>2.0%</b>	<b>0.6%</b>	<b>4.3%</b>	<b>1.5%</b>	<b>0.9%</b>	<b>1.0%</b>	<b>7.1%</b>	<b>8.1%</b>
Health Service Executive	0.0%	2.6%	0.3%	9.0%	0.0%	0.7%	1.2%	6.3%	7.5%
Section 38 Voluntary Agencies	0.0%	1.3%	4.0%	3.1%	0.2%	1.8%	1.9%	4.5%	6.4%
<b>CHO 5</b>	<b>0.0%</b>	<b>1.9%</b>	<b>2.4%</b>	<b>5.9%</b>	<b>0.2%</b>	<b>1.7%</b>	<b>1.7%</b>	<b>5.0%</b>	<b>6.7%</b>
Health Service Executive	0.9%	2.8%	5.3%	12.6%	0.0%	1.2%	2.2%	5.4%	7.6%
Section 38 Voluntary Agencies	0.0%	1.2%	1.0%	2.1%	0.3%	1.2%	1.0%	3.8%	4.7%
<b>CHO 6</b>	<b>0.8%</b>	<b>1.7%</b>	<b>1.4%</b>	<b>3.8%</b>	<b>0.3%</b>	<b>1.2%</b>	<b>1.2%</b>	<b>4.0%</b>	<b>5.2%</b>
Health Service Executive		0.0%	0.2%	9.3%		0.7%	0.6%	5.2%	5.7%
Section 38 Voluntary Agencies	0.0%	1.4%	0.7%	2.9%	1.8%	1.2%	1.1%	5.5%	6.6%
<b>CHO 7</b>	<b>0.0%</b>	<b>1.4%</b>	<b>0.7%</b>	<b>3.9%</b>	<b>1.8%</b>	<b>1.2%</b>	<b>1.1%</b>	<b>5.5%</b>	<b>6.6%</b>
Health Service Executive	0.0%	0.2%	1.0%	10.6%	5.5%	2.0%	1.2%	8.6%	9.8%
Section 38 Voluntary Agencies	0.0%	2.0%	1.3%	3.8%	0.5%	1.3%	1.4%	4.5%	5.9%
<b>CHO 8</b>	<b>0.0%</b>	<b>1.4%</b>	<b>1.3%</b>	<b>6.8%</b>	<b>1.2%</b>	<b>1.5%</b>	<b>1.3%</b>	<b>5.5%</b>	<b>6.9%</b>
Health Service Executive	0.0%	0.2%	0.1%	4.3%	0.0%	0.9%	0.4%	6.4%	6.8%
Section 38 Voluntary Agencies	0.0%	1.6%	1.1%	4.4%	1.6%	1.3%	1.2%	4.5%	5.7%
<b>CHO 9</b>	<b>0.0%</b>	<b>1.2%</b>	<b>1.1%</b>	<b>4.4%</b>	<b>1.5%</b>	<b>1.2%</b>	<b>1.1%</b>	<b>4.8%</b>	<b>5.9%</b>
<b>Other Community Services</b>				<b>0.0%</b>			<b>0.0%</b>	<b>0.0%</b>	<b>0.0%</b>

### Covid-19 absence rate



## October 2021

Health Service Absence Rate - by Staff Category: Oct 2021	Certified absence	Self- certified absence	Non Covid-19 absence	Covid-19 absence	Total absence rate	% Non Covid-19 absence	% Covid-19 absence
<b>HSE Social Care CHO 1</b>	<b>5.8%</b>	<b>0.4%</b>	<b>6.3%</b>	<b>2.3%</b>	<b>8.6%</b>	<b>73.2%</b>	<b>26.8%</b>
Medical & Dental	0.0%	0.0%	0.0%	0.0%	0.0%		
Nursing & Midwifery	5.8%	0.5%	6.3%	2.2%	8.5%	73.7%	26.3%
Health & Social Care Professionals	1.9%	0.1%	2.0%	0.7%	2.7%	73.9%	26.1%
Management & Administrative	4.8%	0.2%	5.1%	1.1%	6.2%	81.9%	18.1%
General Support	8.8%	0.2%	9.1%	3.2%	12.2%	74.0%	26.0%
Patient & Client Care	6.1%	0.5%	6.6%	2.6%	9.1%	71.9%	28.1%

## October 2021

Health Service Absence Rate - by Staff Category: Oct 2021	Certified absence	Self- certified absence	Non Covid-19 absence	Covid-19 absence	Total absence rate	% Non Covid-19 absence	% Covid-19 absence
<b>HSE Social Care CHO 2</b>	<b>4.2%</b>	<b>0.3%</b>	<b>4.5%</b>	<b>1.0%</b>	<b>5.5%</b>	<b>81.6%</b>	<b>18.4%</b>
Medical & Dental	4.0%	0.0%	4.0%	0.0%	4.0%	100.0%	0.0%
Nursing & Midwifery	4.5%	0.1%	4.7%	1.5%	6.1%	76.1%	23.9%
Health & Social Care Professionals	4.3%	0.3%	4.6%	0.9%	5.5%	83.7%	16.3%
Management & Administrative	3.6%	0.0%	3.6%	0.0%	3.6%	100.0%	0.0%
General Support	4.0%	0.1%	4.1%	1.0%	5.1%	80.5%	19.5%
Patient & Client Care	4.2%	0.4%	4.6%	1.0%	5.6%	82.0%	18.0%

## October 2021

Health Service Absence Rate - by Staff Category: Oct 2021	Certified absence	Self- certified absence	Non Covid-19 absence	Covid-19 absence	Total absence rate	% Non Covid-19 absence	% Covid-19 absence
<b>HSE Social Care CHO 3</b>	<b>5.8%</b>	<b>0.5%</b>	<b>6.2%</b>	<b>1.7%</b>	<b>8.0%</b>	<b>78.4%</b>	<b>21.6%</b>
Medical & Dental	0.7%	0.0%	0.7%	0.0%	0.7%	100.0%	0.0%
Nursing & Midwifery	7.3%	0.5%	7.9%	1.9%	9.7%	80.6%	19.4%
Health & Social Care Professionals	4.0%	0.3%	4.3%	1.2%	5.5%	77.3%	22.7%
Management & Administrative	4.7%	0.4%	5.2%	0.5%	5.7%	91.4%	8.6%
General Support	7.6%	0.3%	7.9%	1.5%	9.4%	84.1%	15.9%
Patient & Client Care	5.5%	0.5%	6.0%	2.0%	8.0%	75.3%	24.7%

## October 2021

Health Service Absence Rate - by Staff Category: Oct 2021	Certified absence	Self- certified absence	Non Covid-19 absence	Covid-19 absence	Total absence rate	% Non Covid-19 absence	% Covid-19 absence
<b>HSE Social Care CHO 4</b>	<b>5.3%</b>	<b>0.9%</b>	<b>6.2%</b>	<b>1.5%</b>	<b>7.7%</b>	<b>80.6%</b>	<b>19.4%</b>
Medical & Dental	0.0%	0.0%	0.0%	0.0%	0.0%		
Nursing & Midwifery	4.8%	1.0%	5.8%	1.9%	7.7%	75.3%	24.7%
Health & Social Care Professionals	5.5%	0.5%	6.0%	0.6%	6.7%	90.8%	9.2%
Management & Administrative	3.3%	0.6%	3.9%	0.5%	4.4%	87.9%	12.1%
General Support	2.7%	0.8%	3.5%	1.5%	4.9%	70.3%	29.7%
Patient & Client Care	6.2%	1.0%	7.2%	1.7%	8.8%	81.2%	18.8%



## October 2021

Health Service Absence Rate - by Staff Category: Oct 2021	Certified absence	Self- certified absence	Non Covid-19 absence	Covid-19 absence	Total absence rate	% Non Covid-19 absence	% Covid-19 absence
<b>HSE Social Care CHO 5</b>	<b>5.4%</b>	<b>0.7%</b>	<b>6.1%</b>	<b>1.7%</b>	<b>7.8%</b>	<b>77.8%</b>	<b>22.2%</b>
Medical & Dental	0.0%	0.3%	0.3%	0.0%	0.3%	100.0%	0.0%
Nursing & Midwifery	7.1%	0.7%	7.7%	1.8%	9.5%	81.5%	18.5%
Health & Social Care Professionals	5.1%	0.2%	5.3%	2.2%	7.6%	70.5%	29.5%
Management & Administrative	5.2%	0.5%	5.7%	0.7%	6.4%	88.5%	11.5%
General Support	3.3%	0.5%	3.9%	3.4%	7.3%	53.0%	47.0%
Patient & Client Care	4.8%	0.9%	5.7%	1.6%	7.3%	77.8%	22.2%

## October 2021

Health Service Absence Rate - by Staff Category: Oct 2021	Certified absence	Self- certified absence	Non Covid-19 absence	Covid-19 absence	Total absence rate	% Non Covid-19 absence	% Covid-19 absence
<b>HSE Social Care CHO 6</b>	<b>3.7%</b>	<b>0.5%</b>	<b>4.2%</b>	<b>1.4%</b>	<b>5.6%</b>	<b>74.8%</b>	<b>25.2%</b>
Medical & Dental	0.2%	0.0%	0.2%	0.6%	0.8%	27.3%	72.7%
Nursing & Midwifery	5.3%	0.4%	5.7%	2.0%	7.7%	73.8%	26.2%
Health & Social Care Professionals	2.8%	0.4%	3.2%	1.3%	4.6%	71.0%	29.0%
Management & Administrative	3.2%	0.2%	3.4%	0.2%	3.6%	93.9%	6.1%
General Support	4.4%	0.4%	4.9%	0.2%	5.1%	95.5%	4.5%
Patient & Client Care	3.4%	0.7%	4.1%	1.7%	5.8%	71.2%	28.8%

## October 2021

Health Service Absence Rate - by Staff Category: Oct 2021	Certified absence	Self- certified absence	Non Covid-19 absence	Covid-19 absence	Total absence rate	% Non Covid-19 absence	% Covid-19 absence
<b>HSE Social Care CHO 7</b>	<b>5.5%</b>	<b>0.7%</b>	<b>6.2%</b>	<b>1.3%</b>	<b>7.6%</b>	<b>82.2%</b>	<b>17.8%</b>
Medical & Dental	0.0%	0.0%	0.0%	0.0%	0.0%		
Nursing & Midwifery	5.3%	0.7%	6.1%	2.0%	8.1%	75.0%	25.0%
Health & Social Care Professionals	3.3%	1.2%	4.5%	0.7%	5.2%	86.5%	13.5%
Management & Administrative	4.1%	0.2%	4.3%	0.7%	5.0%	86.0%	14.0%
General Support	6.4%	0.7%	7.0%	1.8%	8.8%	79.7%	20.3%
Patient & Client Care	6.5%	0.6%	7.0%	1.3%	8.4%	84.3%	15.7%

## October 2021

Health Service Absence Rate - by Staff Category: Oct 2021	Certified absence	Self- certified absence	Non Covid-19 absence	Covid-19 absence	Total absence rate	% Non Covid-19 absence	% Covid-19 absence
<b>HSE Social Care CHO 8</b>	<b>5.7%</b>	<b>0.5%</b>	<b>6.2%</b>	<b>1.8%</b>	<b>8.0%</b>	<b>77.7%</b>	<b>22.3%</b>
Medical & Dental	0.0%	0.0%	0.0%	0.0%	0.0%		
Nursing & Midwifery	5.9%	0.6%	6.5%	2.2%	8.7%	74.2%	25.8%
Health & Social Care Professionals	4.9%	0.3%	5.2%	1.3%	6.5%	79.8%	20.2%
Management & Administrative	5.7%	0.3%	6.0%	0.9%	6.9%	87.5%	12.5%
General Support	3.8%	0.2%	4.0%	1.6%	5.6%	71.4%	28.6%
Patient & Client Care	6.1%	0.6%	6.7%	1.9%	8.5%	77.9%	22.1%

## October 2021

Health Service Absence Rate - by Staff Category: Oct 2021	Certified absence	Self-certified absence	Non Covid-19 absence	Covid-19 absence	Total absence rate	% Non Covid-19 absence	% Covid-19 absence
HSE Social Care CHO 9	4.4%	0.5%	4.9%	1.0%	5.9%	82.3%	17.7%
Medical & Dental	2.6%	0.2%	2.9%	0.0%	2.9%	100.0%	0.0%
Nursing & Midwifery	3.8%	0.6%	4.4%	1.3%	5.7%	77.2%	22.8%
Health & Social Care Professionals	3.9%	0.2%	4.1%	1.1%	5.2%	78.7%	21.3%
Management & Administrative	3.2%	0.2%	3.5%	0.3%	3.8%	92.0%	8.0%
General Support	6.1%	0.4%	6.5%	1.2%	7.7%	84.1%	15.9%
Patient & Client Care	5.6%	0.6%	6.2%	1.0%	7.2%	86.5%	13.5%

## October 2021

Health Service Absence Rate - by Staff Category: Oct 2021	Certified absence	Self-certified absence	Non Covid-19 absence	Covid-19 absence	Total absence rate	% Non Covid-19 absence	% Covid-19 absence
HSE Social Care Other Community Services	1.5%	0.2%	1.7%	0.0%	1.7%	100.0%	0.0%
Medical & Dental							
Nursing & Midwifery							
Health & Social Care Professionals							
Management & Administrative	1.5%	0.2%	1.7%	0.0%	1.7%	100.0%	0.0%
General Support							
Patient & Client Care	0.0%	0.0%	0.0%	0.0%	0.0%		#DIV/0

## October 2021

Bros. of Charity, Clare absence by Staff Category	Certified absence	Self-certified absence	Non Covid-19 absence	Covid-19 absence	Total absence rate	% Non Covid-19 absence	% Covid-19 absence
<b>Bros. of Charity, Clare (CHO 3)</b>	<b>4.5%</b>	<b>0.3%</b>	<b>4.8%</b>	<b>1.8%</b>	<b>6.6%</b>	<b>73.1%</b>	<b>26.9%</b>
Medical & Dental	0.0%	0.0%	0.0%	0.0%	0.0%		
Nursing & Midwifery	0.0%	0.0%	0.0%	0.0%	0.0%		#DIV/0
Health & Social Care Professionals	5.2%	0.1%	5.3%	2.3%	7.6%	69.9%	30.1%
Management & Administrative	1.0%	1.0%	1.9%	0.0%	1.9%	100.0%	0.0%
General Support							
Patient & Client Care	4.5%	0.4%	4.8%	1.7%	6.5%	74.1%	25.9%

## October 2021

Bros. of Charity, Limerick absence by Staff Category	Certified absence	Self-certified absence	Non Covid-19 absence	Covid-19 absence	Total absence rate	% Non Covid-19 absence	% Covid-19 absence
<b>Bros. of Charity, Limerick (CHO 3)</b>	<b>4.6%</b>	<b>0.5%</b>	<b>5.1%</b>	<b>2.2%</b>	<b>7.3%</b>	<b>69.7%</b>	<b>30.3%</b>
Medical & Dental	0.0%	0.0%	0.0%	0.0%	0.0%		
Nursing & Midwifery	6.1%	0.8%	6.9%	3.2%	10.1%	68.1%	31.9%
Health & Social Care Professionals	5.3%	0.2%	5.5%	1.0%	6.4%	84.7%	15.3%
Management & Administrative	0.0%	0.0%	0.0%	0.0%	0.0%		#DIV/0
General Support	10.0%	0.4%	10.4%	0.0%	10.4%	100.0%	0.0%
Patient & Client Care	3.9%	0.5%	4.5%	2.5%	7.0%	64.0%	36.0%

## October 2021

Bros. of Charity, Southern absence by Staff Category	Certified absence	Self-certified absence	Non Covid-19 absence	Covid-19 absence	Total absence rate	% Non Covid-19 absence	% Covid-19 absence
<b>Bros. of Charity, Southern (CHO 4)</b>	<b>5.5%</b>	<b>0.5%</b>	<b>5.9%</b>	<b>0.9%</b>	<b>6.8%</b>	<b>87.2%</b>	<b>12.8%</b>
Medical & Dental							
Nursing & Midwifery	7.3%	1.1%	8.5%	0.2%	8.7%	97.4%	2.6%
Health & Social Care Professionals	4.9%	0.4%	5.3%	1.0%	6.3%	84.6%	15.4%
Management & Administrative	2.2%	0.1%	2.3%	0.0%	2.3%	100.0%	0.0%
General Support	6.6%	0.6%	7.2%	5.1%	12.3%	58.3%	41.7%
Patient & Client Care	5.8%	0.4%	6.2%	0.9%	7.0%	87.7%	12.3%

## October 2021

Bros. of Charity, Waterford absence by Staff Category	Certified absence	Self-certified absence	Non Covid-19 absence	Covid-19 absence	Total absence rate	% Non Covid-19 absence	% Covid-19 absence
<b>Bros. of Charity, Waterford (CHO 5)</b>	<b>3.7%</b>	<b>0.8%</b>	<b>4.5%</b>	<b>2.0%</b>	<b>6.4%</b>	<b>69.3%</b>	<b>30.7%</b>
Medical & Dental	0.0%	5.8%	5.8%	0.0%	5.8%	100.0%	0.0%
Nursing & Midwifery	5.9%	0.7%	6.5%	1.3%	7.8%	83.5%	16.5%
Health & Social Care Professionals	1.7%	0.2%	1.9%	3.8%	5.7%	33.3%	66.7%
Management & Administrative	2.6%	0.9%	3.4%	0.0%	3.4%	100.0%	0.0%
General Support	5.4%	1.2%	6.5%	0.5%	7.1%	92.5%	7.5%
Patient & Client Care	3.8%	0.9%	4.7%	1.9%	6.6%	70.9%	29.1%

## October 2021

Bros. of Charity, West Region absence by Staff Category	Certified absence	Self-certified absence	Non Covid-19 absence	Covid-19 absence	Total absence rate	% Non Covid-19 absence	% Covid-19 absence
<b>Bros. of Charity, West Region (CHO 2)</b>	<b>4.4%</b>	<b>0.4%</b>	<b>4.8%</b>	<b>0.8%</b>	<b>5.7%</b>	<b>85.1%</b>	<b>14.9%</b>
Medical & Dental	4.0%	0.0%	4.0%	0.0%	4.0%	100.0%	0.0%
Nursing & Midwifery	4.7%	0.2%	4.8%	1.0%	5.8%	83.1%	16.9%
Health & Social Care Professionals	5.0%	0.4%	5.4%	1.0%	6.4%	83.8%	16.2%
Management & Administrative	3.0%	0.0%	3.0%	0.0%	3.0%	100.0%	0.0%
General Support	3.4%	0.2%	3.6%	0.5%	4.1%	87.3%	12.7%
Patient & Client Care	4.4%	0.5%	4.9%	0.9%	5.8%	85.1%	14.9%

## October 2021

Carriglea Cairde Services absence by Staff Category	Certified absence	Self-certified absence	Non Covid-19 absence	Covid-19 absence	Total absence rate	% Non Covid-19 absence	% Covid-19 absence
<b>Carriglea Cairde Services (CHO 5)</b>	<b>4.0%</b>	<b>0.5%</b>	<b>4.5%</b>	<b>1.8%</b>	<b>6.2%</b>	<b>71.5%</b>	<b>28.5%</b>
Medical & Dental							
Nursing & Midwifery	7.2%	0.6%	7.8%	1.4%	9.2%	84.7%	15.3%
Health & Social Care Professionals	7.0%	0.8%	7.8%	4.6%	12.4%	62.7%	37.3%
Management & Administrative	1.7%	0.0%	1.7%	0.0%	1.7%	100.0%	0.0%
General Support	6.8%	0.0%	6.8%	0.0%	6.8%	100.0%	0.0%
Patient & Client Care	2.5%	0.4%	2.9%	1.5%	4.4%	65.9%	34.1%

## October 2021

Central Remedial Clinic absence by Staff Category	Certified absence	Self-certified absence	Non Covid-19 absence	Covid-19 absence	Total absence rate	% Non Covid-19 absence	% Covid-19 absence
<b>Central Remedial Clinic (CHO 9)</b>	<b>3.3%</b>	<b>0.4%</b>	<b>3.7%</b>	<b>0.4%</b>	<b>4.1%</b>	<b>90.0%</b>	<b>10.0%</b>
Medical & Dental	0.0%	0.0%	0.0%	0.0%	0.0%		
Nursing & Midwifery	5.0%	0.0%	5.0%	0.0%	5.0%	100.0%	0.0%
Health & Social Care Professionals	1.5%	0.2%	1.8%	0.3%	2.0%	86.8%	13.2%
Management & Administrative	4.9%	0.7%	5.6%	0.0%	5.6%	100.0%	0.0%
General Support	7.9%	0.0%	7.9%	0.0%	7.9%	100.0%	0.0%
Patient & Client Care	4.7%	0.7%	5.3%	1.0%	6.4%	84.1%	15.9%

## October 2021

Cheeverstown House absence by Staff Category	Certified absence	Self-certified absence	Non Covid-19 absence	Covid-19 absence	Total absence rate	% Non Covid-19 absence	% Covid-19 absence
<b>Cheeverstown House (CHO 7)</b>	<b>7.6%</b>	<b>0.6%</b>	<b>8.2%</b>	<b>1.9%</b>	<b>10.1%</b>	<b>80.8%</b>	<b>19.2%</b>
Medical & Dental	0.0%	0.0%	0.0%	0.0%	0.0%		
Nursing & Midwifery	7.3%	0.5%	7.8%	1.6%	9.4%	82.7%	17.3%
Health & Social Care Professionals	3.7%	0.7%	4.4%	2.0%	6.4%	68.2%	31.8%
Management & Administrative	0.0%	0.0%	0.0%	0.5%	0.5%	0.0%	100.0%
General Support	16.3%	0.3%	16.7%	0.4%	17.0%	97.8%	2.2%
Patient & Client Care	9.2%	0.9%	10.0%	2.8%	12.9%	78.0%	22.0%

## October 2021

Children's Sunshine Home absence by Staff Category	Certified absence	Self-certified absence	Non Covid-19 absence	Covid-19 absence	Total absence rate	% Non Covid-19 absence	% Covid-19 absence
<b>Children's Sunshine Home (CHO 6)</b>	<b>9.8%</b>	<b>0.7%</b>	<b>10.5%</b>	<b>1.2%</b>	<b>11.7%</b>	<b>89.6%</b>	<b>10.4%</b>
Medical & Dental							
Nursing & Midwifery	9.3%	0.7%	10.0%	2.3%	12.4%	81.1%	18.9%
Health & Social Care Professionals	58.1%	0.0%	58.1%	0.0%	58.1%	100.0%	0.0%
Management & Administrative	0.0%	0.0%	0.0%	0.0%	0.0%		#DIV/0
General Support	0.0%	0.0%	0.0%	0.0%	0.0%		
Patient & Client Care	14.0%	1.1%	15.1%	0.0%	15.1%	100.0%	0.0%

## October 2021

Cope Foundation absence by Staff Category	Certified absence	Self-certified absence	Non Covid-19 absence	Covid-19 absence	Total absence rate	% Non Covid-19 absence	% Covid-19 absence
<b>Cope Foundation (CHO 4)</b>	<b>6.5%</b>	<b>2.1%</b>	<b>8.6%</b>	<b>1.0%</b>	<b>9.7%</b>	<b>89.2%</b>	<b>10.8%</b>
Medical & Dental							
Nursing & Midwifery	7.2%	2.7%	9.9%	1.9%	11.8%	83.8%	16.2%
Health & Social Care Professionals	6.4%	1.0%	7.4%	0.5%	7.9%	94.2%	5.8%
Management & Administrative	3.3%	2.2%	5.5%	1.3%	6.8%	80.3%	19.7%
General Support	1.9%	1.8%	3.7%	0.7%	4.3%	84.2%	15.8%
Patient & Client Care	7.1%	2.2%	9.3%	0.9%	10.1%	91.5%	8.5%

## October 2021

Daughters of Charity, Dublin absence by Staff Category	Certified absence	Self-certified absence	Non Covid-19 absence	Covid-19 absence	Total absence rate	% Non Covid-19 absence	% Covid-19 absence
<b>Daughters of Charity, Dublin (CHO 9)</b>	<b>3.7%</b>	<b>0.3%</b>	<b>4.0%</b>	<b>2.2%</b>	<b>6.1%</b>	<b>64.8%</b>	<b>35.2%</b>
Medical & Dental	21.0%	0.0%	21.0%	0.0%	21.0%	100.0%	0.0%
Nursing & Midwifery	2.6%	0.3%	2.9%	2.2%	5.1%	57.4%	42.6%
Health & Social Care Professionals	4.1%	0.3%	4.4%	2.8%	7.2%	61.0%	39.0%
Management & Administrative	4.2%	0.0%	4.2%	1.0%	5.2%	80.0%	20.0%
General Support	2.1%	0.2%	2.3%	2.1%	4.4%	52.3%	47.7%
Patient & Client Care	4.1%	0.4%	4.6%	2.0%	6.5%	69.8%	30.2%

## October 2021

Daughters of Charity, Limerick absence by Staff Category	Certified absence	Self-certified absence	Non Covid-19 absence	Covid-19 absence	Total absence rate	% Non Covid-19 absence	% Covid-19 absence
<b>Daughters of Charity, Limerick (CHO 3)</b>	<b>4.1%</b>	<b>0.3%</b>	<b>4.4%</b>	<b>2.2%</b>	<b>6.6%</b>	<b>66.5%</b>	<b>33.5%</b>
Medical & Dental							
Nursing & Midwifery	4.7%	0.3%	5.0%	2.0%	7.0%	71.4%	28.6%
Health & Social Care Professionals	3.4%	0.3%	3.7%	1.4%	5.0%	72.9%	27.1%
Management & Administrative	2.4%	0.0%	2.4%	0.4%	2.7%	87.0%	13.0%
General Support	3.7%	0.0%	3.7%	2.6%	6.3%	58.5%	41.5%
Patient & Client Care	4.1%	0.4%	4.5%	3.0%	7.5%	59.7%	40.3%

## October 2021

Daughters of Charity, Roscrea absence by Staff Category	Certified absence	Self-certified absence	Non Covid-19 absence	Covid-19 absence	Total absence rate	% Non Covid-19 absence	% Covid-19 absence
<b>Daughters of Charity, Roscrea (CHO 3)</b>	<b>2.2%</b>	<b>0.3%</b>	<b>2.5%</b>	<b>0.9%</b>	<b>3.4%</b>	<b>74.5%</b>	<b>25.5%</b>
Medical & Dental							
Nursing & Midwifery	4.3%	0.3%	4.6%	0.9%	5.5%	83.4%	16.6%
Health & Social Care Professionals	0.6%	0.0%	0.6%	1.3%	1.9%	30.3%	69.7%
Management & Administrative	0.3%	0.0%	0.3%	0.0%	0.3%	100.0%	0.0%
General Support	3.7%	0.0%	3.7%	5.5%	9.2%	40.1%	59.9%
Patient & Client Care	2.2%	0.4%	2.6%	0.6%	3.2%	80.3%	19.7%

## October 2021

Incorporated Orthopaedic Hospital absence by Staff Category	Certified absence	Self-certified absence	Non Covid-19 absence	Covid-19 absence	Total absence rate	% Non Covid-19 absence	% Covid-19 absence
<b>Incorporated Orthopaedic Hospital (CHO 9)</b>	<b>5.9%</b>	<b>0.4%</b>	<b>6.3%</b>	<b>0.6%</b>	<b>6.8%</b>	<b>91.6%</b>	<b>8.4%</b>
Medical & Dental	0.0%	0.0%	0.0%	0.0%	0.0%		
Nursing & Midwifery	5.4%	0.6%	6.1%	0.7%	6.8%	89.1%	10.9%
Health & Social Care Professionals	0.5%	0.2%	0.7%	1.8%	2.5%	27.4%	72.6%
Management & Administrative	0.0%	0.3%	0.3%	0.0%	0.3%	100.0%	0.0%
General Support	6.7%	0.5%	7.3%	0.0%	7.3%	100.0%	0.0%
Patient & Client Care	10.8%	0.1%	11.0%	0.3%	11.3%	97.4%	2.6%

## October 2021

Kare, Newbridge, Co Kildare absence by Staff Category	Certified absence	Self-certified absence	Non Covid-19 absence	Covid-19 absence	Total absence rate	% Non Covid-19 absence	% Covid-19 absence
<b>Kare, Newbridge, Co Kildare (CHO 7)</b>	<b>4.6%</b>	<b>0.5%</b>	<b>5.1%</b>	<b>1.2%</b>	<b>6.2%</b>	<b>81.0%</b>	<b>19.0%</b>
Medical & Dental							
Nursing & Midwifery	1.7%	0.1%	1.8%	4.0%	5.8%	30.8%	69.2%
Health & Social Care Professionals	5.9%	0.5%	6.4%	0.4%	6.8%	93.9%	6.1%
Management & Administrative	4.4%	0.6%	5.1%	0.3%	5.4%	94.2%	5.8%
General Support	0.0%	0.0%	0.0%	0.0%	0.0%		
Patient & Client Care	4.4%	0.5%	4.9%	1.3%	6.2%	78.5%	21.5%

## October 2021

Leopardstown Park Hospital absence by Staff Category	Certified absence	Self-certified absence	Non Covid-19 absence	Covid-19 absence	Total absence rate	% Non Covid-19 absence	% Covid-19 absence
<b>Leopardstown Park Hospital (CHO 6)</b>	<b>4.2%</b>	<b>0.5%</b>	<b>4.8%</b>	<b>1.0%</b>	<b>5.8%</b>	<b>82.4%</b>	<b>17.6%</b>
Medical & Dental							
Nursing & Midwifery	3.1%	0.5%	3.6%	1.4%	4.9%	72.4%	27.6%
Health & Social Care Professionals	3.5%	0.4%	4.0%	0.8%	4.7%	83.4%	16.6%
Management & Administrative	2.9%	0.6%	3.5%	0.0%	3.5%	100.0%	0.0%
General Support	5.8%	0.7%	6.6%	0.6%	7.2%	91.1%	8.9%
Patient & Client Care	4.6%	0.5%	5.1%	1.2%	6.3%	80.5%	19.5%

## October 2021

Muiriosa Foundation, Laois/Offaly absence by Staff Category	Certified absence	Self-certified absence	Non Covid-19 absence	Covid-19 absence	Total absence rate	% Non Covid-19 absence	% Covid-19 absence
<b>Muiriosa Foundation, Laois/Offaly (CHO 8)</b>	<b>3.7%</b>	<b>0.3%</b>	<b>4.0%</b>	<b>2.1%</b>	<b>6.1%</b>	<b>65.2%</b>	<b>34.8%</b>
Medical & Dental							
Nursing & Midwifery	3.1%	0.4%	3.5%	2.7%	6.3%	56.3%	43.7%
Health & Social Care Professionals	4.3%	0.2%	4.5%	2.5%	7.0%	64.5%	35.5%
Management & Administrative	1.1%	0.0%	1.1%	2.0%	3.2%	36.2%	63.8%
General Support	21.4%	0.0%	21.4%	0.0%	21.4%	100.0%	0.0%
Patient & Client Care	3.4%	0.3%	3.7%	1.8%	5.5%	67.8%	32.2%

## October 2021

Muiriosa Foundation, Longford/Westmeath absence by Staff Category	Certified absence	Self-certified absence	Non Covid-19 absence	Covid-19 absence	Total absence rate	% Non Covid-19 absence	% Covid-19 absence
<b>Muiriosa Foundation, Longford/Westmeath (CHO 8)</b>	<b>4.8%</b>	<b>0.1%</b>	<b>5.0%</b>	<b>0.5%</b>	<b>5.5%</b>	<b>91.1%</b>	<b>8.9%</b>
Medical & Dental							
Nursing & Midwifery	0.0%	0.0%	0.0%	0.0%	0.0%		#DIV/0
Health & Social Care Professionals	6.5%	0.3%	6.7%	0.8%	7.5%	89.4%	10.6%
Management & Administrative	0.0%	0.0%	0.0%	0.0%	0.0%		#DIV/0
General Support	0.0%	0.0%	0.0%	0.0%	0.0%		
Patient & Client Care	4.7%	0.1%	4.8%	0.4%	5.1%	92.8%	7.2%

## October 2021

Muiriosa Foundation, South Kildare absence by Staff Category	Certified absence	Self-certified absence	Non Covid-19 absence	Covid-19 absence	Total absence rate	% Non Covid-19 absence	% Covid-19 absence
<b>Muiriosa Foundation, South Kildare (CHO 8)</b>	<b>4.4%</b>	<b>0.4%</b>	<b>4.8%</b>	<b>1.0%</b>	<b>5.8%</b>	<b>83.3%</b>	<b>16.7%</b>
Medical & Dental							
Nursing & Midwifery	1.9%	0.5%	2.4%	1.5%	3.9%	60.8%	39.2%
Health & Social Care Professionals	4.6%	0.2%	4.7%	0.4%	5.2%	91.3%	8.7%
Management & Administrative	8.6%	0.2%	8.8%	0.0%	8.8%	100.0%	0.0%
General Support	0.0%	0.0%	0.0%	1.3%	1.3%	0.0%	100.0%
Patient & Client Care	4.6%	0.7%	5.4%	1.3%	6.7%	80.3%	19.7%

## October 2021

Peamount Hospital (Newcastle) absence by Staff Category	Certified absence	Self-certified absence	Non Covid-19 absence	Covid-19 absence	Total absence rate	% Non Covid-19 absence	% Covid-19 absence
<b>Peamount Hospital (Newcastle) (CHO 7)</b>						<b>#DIV/0</b>	
Medical & Dental							
Nursing & Midwifery							
Health & Social Care Professionals							
Management & Administrative							
General Support							
Patient & Client Care							



## October 2021

Royal Hospital, Donnybrook, Dublin absence by Staff Category	Certified absence	Self-certified absence	Non Covid-19 absence	Covid-19 absence	Total absence rate	% Non Covid-19 absence	% Covid-19 absence
<b>Royal Hospital, Donnybrook, Dublin (CHO 6)</b>	<b>2.0%</b>	<b>0.7%</b>	<b>2.7%</b>	<b>2.5%</b>	<b>5.2%</b>	<b>52.2%</b>	<b>47.8%</b>
Medical & Dental	0.0%	0.0%	0.0%	0.0%	0.0%		
Nursing & Midwifery	2.5%	0.2%	2.7%	4.0%	6.7%	40.8%	59.2%
Health & Social Care Professionals	4.5%	0.2%	4.7%	1.0%	5.7%	83.0%	17.0%
Management & Administrative	0.0%	0.6%	0.6%	2.3%	2.9%	20.6%	79.4%
General Support	3.1%	0.1%	3.2%	0.0%	3.2%	100.0%	0.0%
Patient & Client Care	0.3%	1.7%	2.0%	2.9%	4.8%	40.5%	59.5%

## October 2021

Stewart's Hospital, (Palmerstown) absence by Staff Category	Certified absence	Self-certified absence	Non Covid-19 absence	Covid-19 absence	Total absence rate	% Non Covid-19 absence	% Covid-19 absence
<b>Stewart's Hospital, (Palmerstown) (CHO 7)</b>	<b>4.8%</b>	<b>0.9%</b>	<b>5.6%</b>	<b>1.0%</b>	<b>6.6%</b>	<b>85.4%</b>	<b>14.6%</b>
Medical & Dental	0.0%	0.0%	0.0%	0.0%	0.0%		
Nursing & Midwifery	6.0%	0.3%	6.3%	0.6%	6.8%	91.5%	8.5%
Health & Social Care Professionals	0.0%	7.2%	7.2%	0.4%	7.6%	94.9%	5.1%
Management & Administrative	1.0%	0.2%	1.2%	0.5%	1.7%	70.4%	29.6%
General Support	3.9%	0.2%	4.1%	1.8%	5.9%	69.1%	30.9%
Patient & Client Care	5.4%	0.5%	5.9%	1.0%	7.0%	85.0%	15.0%

## October 2021

St. John of God, Drumcar absence by Staff Category	Certified absence	Self-certified absence	Non Covid-19 absence	Covid-19 absence	Total absence rate	% Non Covid-19 absence	% Covid-19 absence
<b>St. John of God, Drumcar (CHO 8)</b>	<b>4.0%</b>	<b>0.5%</b>	<b>4.5%</b>	<b>1.6%</b>	<b>6.1%</b>	<b>73.8%</b>	<b>26.2%</b>
Medical & Dental	0.0%	0.0%	0.0%	0.0%	0.0%		
Nursing & Midwifery	4.4%	0.7%	5.1%	2.0%	7.1%	71.4%	28.6%
Health & Social Care Professionals	2.1%	0.6%	2.7%	1.5%	4.2%	64.7%	35.3%
Management & Administrative	0.0%	0.0%	0.0%	0.0%	0.0%		#DIV/0
General Support	4.2%	0.3%	4.5%	0.0%	4.5%	100.0%	0.0%
Patient & Client Care	4.5%	0.4%	4.9%	1.6%	6.4%	75.6%	24.4%

## October 2021

St. John of God (IDS) absence by Staff Category	Certified absence	Self-certified absence	Non Covid-19 absence	Covid-19 absence	Total absence rate	% Non Covid-19 absence	% Covid-19 absence
<b>St. John of God (IDS) (CHO 6)</b>	<b>3.0%</b>	<b>0.6%</b>	<b>3.5%</b>	<b>1.1%</b>	<b>4.7%</b>	<b>75.4%</b>	<b>24.6%</b>
Medical & Dental	0.0%	0.0%	0.0%	0.0%	0.0%		
Nursing & Midwifery	3.2%	1.1%	4.3%	0.3%	4.6%	93.2%	6.8%
Health & Social Care Professionals	2.9%	0.5%	3.3%	1.5%	4.8%	69.4%	30.6%
Management & Administrative	2.3%	0.4%	2.6%	0.0%	2.6%	100.0%	0.0%
General Support	6.7%	0.5%	7.1%	0.0%	7.1%	100.0%	0.0%
Patient & Client Care	2.9%	0.5%	3.4%	1.6%	5.1%	67.4%	32.6%



## October 2021

St. John of God, Kerry absence by Staff Category	Certified absence	Self-certified absence	Non Covid-19 absence	Covid-19 absence	Total absence rate	% Non Covid-19 absence	% Covid-19 absence
<b>St. John of God, Kerry (CHO 4)</b>	<b>6.2%</b>	<b>0.2%</b>	<b>6.4%</b>	<b>1.7%</b>	<b>8.0%</b>	<b>79.3%</b>	<b>20.7%</b>
Medical & Dental							
Nursing & Midwifery	8.1%	0.1%	8.2%	4.3%	12.4%	65.8%	34.2%
Health & Social Care Professionals	8.1%	0.4%	8.5%	0.0%	8.5%	100.0%	0.0%
Management & Administrative	7.9%	0.0%	7.9%	0.0%	7.9%	100.0%	0.0%
General Support	2.7%	0.1%	2.8%	2.6%	5.3%	51.9%	48.1%
Patient & Client Care	5.2%	0.3%	5.5%	1.3%	6.8%	80.7%	19.3%

## October 2021

St. John of God Liffey Services absence by Staff Category	Certified absence	Self-certified absence	Non Covid-19 absence	Covid-19 absence	Total absence rate	% Non Covid-19 absence	% Covid-19 absence
<b>St. John of God Liffey Services (CHO 7)</b>	<b>3.8%</b>	<b>0.4%</b>	<b>4.3%</b>	<b>0.9%</b>	<b>5.2%</b>	<b>82.2%</b>	<b>17.8%</b>
Medical & Dental	0.0%	0.0%	0.0%	0.0%	0.0%		
Nursing & Midwifery	2.9%	0.5%	3.4%	1.3%	4.7%	72.5%	27.5%
Health & Social Care Professionals	3.2%	0.4%	3.6%	0.6%	4.2%	85.1%	14.9%
Management & Administrative	4.1%	0.1%	4.2%	0.0%	4.2%	100.0%	0.0%
General Support	3.3%	0.9%	4.2%	2.7%	6.9%	61.1%	38.9%
Patient & Client Care	4.8%	0.5%	5.2%	0.9%	6.2%	85.1%	14.9%

## October 2021

St. Michael's House, Dublin absence by Staff Category	Certified absence	Self-certified absence	Non Covid-19 absence	Covid-19 absence	Total absence rate	% Non Covid-19 absence	% Covid-19 absence
<b>St. Michael's House, Dublin (CHO 9)</b>	<b>4.8%</b>	<b>0.3%</b>	<b>5.1%</b>	<b>0.7%</b>	<b>5.8%</b>	<b>88.7%</b>	<b>11.3%</b>
Medical & Dental	0.0%	0.0%	0.0%	0.0%	0.0%		
Nursing & Midwifery	5.0%	0.4%	5.4%	1.1%	6.5%	83.6%	16.4%
Health & Social Care Professionals	4.2%	0.2%	4.4%	0.7%	5.1%	86.3%	13.7%
Management & Administrative	3.2%	0.2%	3.5%	0.0%	3.5%	100.0%	0.0%
General Support	10.5%	0.4%	10.9%	0.9%	11.8%	92.0%	8.0%
Patient & Client Care	5.7%	0.4%	6.2%	0.4%	6.6%	93.4%	6.6%

## October 2021

St. Patrick's, Kilkenny absence by Staff Category	Certified absence	Self-certified absence	Non Covid-19 absence	Covid-19 absence	Total absence rate	% Non Covid-19 absence	% Covid-19 absence
<b>St. Patrick's, Kilkenny (CHO 5)</b>						<b>#DIV/0</b>	
Medical & Dental							
Nursing & Midwifery							
Health & Social Care Professionals							
Management & Administrative							
General Support							
Patient & Client Care							

## October 2021

Sunbeam House Services absence by Staff Category	Certified absence	Self-certified absence	Non Covid-19 absence	Covid-19 absence	Total absence rate	% Non Covid-19 absence	% Covid-19 absence
<b>Sunbeam House Services (CHO 6)</b>	<b>2.9%</b>	<b>0.4%</b>	<b>3.3%</b>	<b>0.8%</b>	<b>4.1%</b>	<b>80.4%</b>	<b>19.6%</b>
Medical & Dental							
Nursing & Midwifery	5.0%	0.2%	5.2%	1.5%	6.7%	77.7%	22.3%
Health & Social Care Professionals	2.8%	0.5%	3.3%	0.7%	4.0%	82.3%	17.7%
Management & Administrative	1.6%	0.0%	1.6%	0.0%	1.6%	100.0%	0.0%
General Support	0.0%	0.0%	0.0%	0.8%	0.8%	0.0%	100.0%
Patient & Client Care	2.9%	0.6%	3.5%	1.0%	4.5%	77.9%	22.1%

## Social Care

Year/ month	Medical & Dental	Nursing & Midwifery	Health & Social Care Professionals	Management & Administrative	General Support	Patient & Client Care	Certified absence	Self-certified absence	Non Covid-19 absence	Covid-19 absence	Total absence rate
<b>2021</b>	<b>3.9%</b>	<b>6.7%</b>	<b>5.2%</b>	<b>3.4%</b>	<b>5.9%</b>	<b>6.7%</b>	<b>4.3%</b>	<b>0.5%</b>	<b>4.8%</b>	<b>1.3%</b>	<b>6.1%</b>
Oct 2021	3.0%	7.7%	5.7%	4.6%	6.6%	7.0%	4.8%	0.5%	5.3%	1.3%	6.6%
Sep 2021	7.7%	6.9%	5.2%	4.2%	5.5%	6.6%	4.6%	0.5%	5.1%	1.0%	6.1%
Aug 2021	10.8%	6.0%	4.8%	4.0%	5.0%	6.6%	4.6%	0.4%	5.0%	0.9%	5.9%
Jul 2021	5.2%	5.8%	4.7%	3.5%	6.2%	6.0%	4.5%	0.4%	4.9%	0.6%	5.5%
Jun 2021	3.2%	5.4%	4.3%	3.0%	5.2%	5.8%	4.4%	0.5%	4.9%	0.6%	5.5%
May 2021	2.5%	5.2%	4.2%	2.3%	4.5%	5.7%	3.9%	0.4%	4.3%	0.7%	5.0%
Apr 2021	2.0%	5.8%	4.5%	2.7%	5.4%	5.5%	3.9%	0.4%	4.3%	0.8%	5.1%
Mar 2021	2.2%	5.7%	4.9%	3.1%	5.3%	6.1%	4.0%	0.5%	4.5%	1.0%	5.5%
Feb 2021	1.3%	7.5%	6.1%	2.9%	6.1%	7.7%	4.4%	0.5%	4.9%	2.0%	6.9%
Jan 2021	0.9%	10.5%	8.1%	3.5%	9.5%	10.5%	4.6%	0.3%	4.9%	4.5%	9.4%
<b>2020</b>	<b>3.1%</b>	<b>7.3%</b>	<b>5.0%</b>	<b>2.9%</b>	<b>6.6%</b>	<b>6.8%</b>	<b>4.5%</b>	<b>0.4%</b>	<b>4.9%</b>	<b>1.4%</b>	<b>6.2%</b>
Dec 2020	2.6%	6.5%	4.1%	3.1%	4.9%	6.2%	4.2%	0.4%	4.6%	1.0%	5.5%
Nov 2020	3.6%	5.7%	3.8%	2.9%	5.5%	5.7%	4.0%	0.3%	4.3%	0.8%	5.1%
Oct 2020	3.8%	7.0%	5.0%	2.6%	6.8%	6.7%	4.2%	0.4%	4.6%	1.5%	6.1%
Sep 2020	3.0%	7.0%	4.7%	2.3%	6.1%	6.2%	4.3%	0.4%	4.6%	1.1%	5.8%
Aug 2020	3.7%	6.3%	4.4%	2.5%	4.8%	5.9%	4.4%	0.3%	4.7%	0.6%	5.3%
Jul 2020	1.1%	6.1%	4.0%	2.1%	5.9%	5.9%	4.4%	0.4%	4.8%	0.5%	5.3%
Jun 2020	0.9%	6.0%	3.7%	1.9%	6.1%	5.5%	4.0%	0.3%	4.3%	0.7%	5.0%
May 2020	2.1%	8.7%	5.6%	2.6%	7.6%	7.9%	4.5%	0.2%	4.7%	2.5%	7.2%
Apr 2020	2.6%	13.6%	8.3%	3.4%	12.8%	12.0%	5.2%	0.4%	5.7%	5.3%	10.9%
Mar 2020	3.1%	9.0%	7.1%	4.7%	7.9%	8.5%	5.1%	0.4%	5.5%	2.6%	8.0%
Feb 2020	4.3%	5.6%	4.4%	3.5%	5.0%	5.3%	4.6%	0.5%	5.0%		5.0%
Jan 2020	4.6%	6.0%	5.0%	3.5%	6.2%	5.9%	5.0%	0.6%	5.6%		5.6%
<b>2019</b>	<b>1.3%</b>	<b>5.6%</b>	<b>4.2%</b>	<b>3.3%</b>	<b>4.8%</b>	<b>5.2%</b>	<b>4.4%</b>	<b>0.5%</b>	<b>4.9%</b>		<b>4.9%</b>
Dec 2019	3.7%	6.0%	4.7%	3.5%	5.4%	4.8%	4.4%	0.5%	4.9%		4.9%
Nov 2019	1.5%	6.1%	3.8%	3.0%	5.0%	5.4%	4.5%	0.5%	5.0%		5.0%
Oct 2019	0.5%	6.0%	4.2%	2.9%	5.3%	5.7%	4.7%	0.5%	5.2%		5.2%
Sep 2019	1.3%	5.6%	4.5%	3.5%	5.3%	5.2%	4.5%	0.5%	4.9%		4.9%
Aug 2019	1.9%	5.7%	4.6%	3.4%	4.5%	5.4%	4.7%	0.4%	5.0%		5.0%
Jul 2019	1.5%	5.3%	4.1%	3.5%	4.8%	5.1%	4.5%	0.3%	4.8%		4.8%
Jun 2019	2.5%	5.4%	3.9%	2.8%	4.1%	5.3%	4.4%	0.4%	4.8%		4.8%

May 2019	3.9%	5.8%	4.3%	2.7%	4.3%	5.2%	4.4%	0.5%	4.9%		4.9%
Apr 2019	0.1%	5.5%	3.9%	3.1%	4.9%	5.2%	4.3%	0.4%	4.7%		4.7%
Mar 2019	0.3%	5.0%	3.7%	3.5%	4.7%	4.9%	4.1%	0.4%	4.5%		4.5%
Feb 2019	1.0%	5.6%	3.9%	3.9%	4.7%	4.9%	4.3%	0.5%	4.7%		4.7%
Jan 2019	0.3%	5.6%	4.5%	4.2%	5.3%	5.5%	4.6%	0.5%	5.2%		5.2%
<b>2018</b>	<b>1.9%</b>	<b>4.6%</b>	<b>4.2%</b>	<b>3.4%</b>	<b>4.2%</b>	<b>4.8%</b>	<b>4.1%</b>	<b>0.4%</b>	<b>4.5%</b>		<b>4.5%</b>

Social Care

Year/ month	CHO 1	CHO 2	CHO 3	CHO 4	CHO 5	CHO 6	CHO 7	CHO 8	CHO 9	other Comm.	Community Services absence rate	Certified absence	Self-certified absence	Non Covid-19 absence	Covid-19 absence	Total absence rate
2021	8.2%	5.6%	5.3%	6.5%	6.6%	5.7%	6.2%	6.5%	5.4%	0.2%	6.1%	4.3%	0.5%	4.8%	1.3%	6.1%
Oct 2021	8.7%	5.4%	6.4%	8.1%	6.7%	5.2%	6.6%	6.9%	5.9%		6.6%	4.8%	0.5%	5.3%	1.3%	6.62%
Sep 2021	8.3%	4.6%	5.4%	6.9%	6.0%	6.3%	6.3%	6.8%	5.0%	1.9%	6.1%	4.6%	0.5%	5.1%	1.0%	6.12%
Aug 2021	8.9%	4.6%	4.8%	6.0%	6.4%	5.7%	6.2%	6.1%	4.9%		5.9%	4.6%	0.4%	5.0%	0.9%	5.86%
Jul 2021	8.3%	4.4%	4.1%	5.4%	5.1%	6.1%	5.8%	6.3%	4.9%		5.5%	4.5%	0.4%	4.9%	0.6%	5.48%
Jun 2021	7.1%	4.8%	4.5%	5.7%	5.3%	5.0%	5.1%	5.3%	6.8%		5.5%	4.4%	0.5%	4.9%	0.6%	5.48%
May 2021	6.6%	4.6%	4.7%	5.5%	4.8%	4.3%	5.1%	5.0%	4.3%		5.0%	3.9%	0.4%	4.3%	0.7%	4.96%
Apr 2021	6.2%	4.5%	3.9%	5.1%	5.3%	5.0%	5.8%	5.6%	4.6%		5.1%	3.9%	0.4%	4.3%	0.8%	5.13%
Mar 2021	7.1%	6.2%	4.5%	5.4%	6.4%	4.5%	5.5%	5.9%	4.7%		5.5%	4.0%	0.5%	4.5%	1.0%	5.48%
Feb 2021	8.5%	7.6%	5.9%	6.7%	9.0%	6.2%	6.6%	7.7%	5.6%		6.9%	4.4%	0.5%	4.9%	2.0%	6.89%
Jan 2021	12.3%	9.0%	8.8%	10.1%	11.3%	8.9%	9.6%	8.7%	7.8%		9.4%	4.6%	0.3%	4.9%	4.5%	9.40%
2020	7.1%	5.6%	5.2%	6.2%	6.6%	4.7%	7.3%	6.7%	5.8%	0.0%	6.2%	4.5%	0.4%	4.9%	1.4%	6.2%
Dec 2020	7.6%	5.7%	4.7%	5.4%	6.9%	3.8%	6.1%	5.6%	4.5%	0.3%	5.5%	4.2%	0.4%	4.6%	1.0%	5.51%
Nov 2020	7.2%	5.2%	4.9%	5.0%	5.5%	3.5%	5.5%	5.4%	4.1%		5.1%	4.0%	0.3%	4.3%	0.8%	5.09%
Oct 2020	8.6%	5.8%	5.3%	6.5%	5.7%	3.7%	7.2%	6.5%	5.1%		6.1%	4.2%	0.4%	4.6%	1.5%	6.08%
Sep 2020	7.6%	5.3%	5.0%	5.3%	5.7%	4.1%	6.9%	6.1%	5.3%		5.8%	4.3%	0.4%	4.6%	1.1%	5.76%
Aug 2020	7.0%	4.1%	5.6%	5.3%	5.5%	4.0%	5.7%	5.7%	4.8%		5.3%	4.4%	0.3%	4.7%	0.6%	5.32%
Jul 2020	6.1%	4.1%	3.9%	4.6%	6.3%	4.4%	6.1%	6.2%	5.2%		5.3%	4.4%	0.4%	4.8%	0.5%	5.26%
Jun 2020	5.6%	4.3%	4.8%	4.9%	5.4%	3.7%	5.5%	5.4%	4.7%		5.0%	4.0%	0.3%	4.3%	0.7%	5.00%
May 2020	6.2%	6.2%	5.9%	7.7%	6.9%	5.4%	9.2%	8.4%	6.5%		7.2%	4.5%	0.2%	4.7%	2.5%	7.19%
Apr 2020	8.8%	9.0%	6.0%	11.9%	10.2%	10.9%	15.8%	12.1%	9.9%		10.9%	5.2%	0.4%	5.7%	5.3%	10.91%
Mar 2020	9.2%	6.8%	6.8%	8.1%	7.7%	6.0%	9.6%	7.2%	8.5%		8.0%	5.1%	0.4%	5.5%	2.6%	8.01%
Feb 2020	5.5%	5.3%	4.4%	4.9%	6.0%	3.7%	4.9%	5.3%	5.2%		5.0%	4.6%	0.5%	5.0%		5.04%
Jan 2020	6.2%	6.3%	5.1%	5.3%	6.9%	4.0%	5.5%	6.4%	5.2%		5.6%	5.0%	0.6%	5.6%		5.59%
2019	7.2%	4.8%	4.4%	4.9%	5.4%	4.0%	4.6%	5.0%	4.6%		4.9%	4.4%	0.5%	4.9%		4.9%
Dec 2019	7.1%	5.0%	4.0%	5.3%	7.0%	3.0%	4.9%	5.0%	5.0%		4.9%	4.4%	0.5%	4.9%		4.94%
Nov 2019	6.3%	5.5%	4.8%	5.4%	6.4%	3.4%	4.5%	4.9%	4.6%		5.0%	4.5%	0.5%	5.0%		5.01%
Oct 2019	6.3%	5.8%	4.8%	5.6%	5.5%	5.0%	5.1%	5.3%	4.6%		5.2%	4.7%	0.5%	5.2%		5.24%
Sep 2019	6.4%	4.9%	4.2%	5.2%	5.5%	4.2%	4.4%	4.9%	4.8%		4.9%	4.5%	0.5%	4.9%		4.93%
Aug 2019	8.1%	5.0%	4.4%	4.7%	5.0%	5.0%	4.3%	5.5%	4.7%		5.0%	4.7%	0.4%	5.0%		5.04%
Jul 2019	7.6%	3.9%	4.3%	4.7%	4.9%	4.2%	4.2%	5.3%	4.5%		4.8%	4.5%	0.3%	4.8%		4.78%
Jun 2019	7.1%	4.1%	4.5%	4.4%	4.7%	4.3%	5.1%	5.0%	4.4%		4.8%	4.4%	0.4%	4.8%		4.82%
May 2019	6.9%	4.4%	4.2%	4.5%	5.2%	4.3%	5.1%	5.2%	4.4%		4.9%	4.4%	0.5%	4.9%		4.89%
Apr 2019	6.7%	4.7%	4.6%	4.7%	5.5%	4.4%	4.4%	4.3%	4.0%		4.7%	4.3%	0.4%	4.7%		4.69%
Mar 2019	7.4%	4.4%	4.1%	4.2%	4.6%	3.4%	4.3%	4.9%	4.0%		4.5%	4.1%	0.4%	4.5%		4.54%
Feb 2019	7.9%	4.5%	4.4%	4.5%	4.9%	3.5%	4.2%	4.5%	4.8%		4.7%	4.3%	0.5%	4.7%		4.73%
Jan 2019	8.3%	4.8%	4.7%	5.4%	5.2%	3.8%	4.7%	5.2%	4.9%		5.2%	4.6%	0.5%	5.2%		5.18%

