

Social Care Disability Services Employment Report: April 2021

Employment by Staff Group

Apr 2021 (Dec 2020 figure: 18,944)	WTE Mar 2021	WTE Apr 2021	WTE change since Mar 21	% change since Mar 21	WTE change since Dec 20	WTE change since Apr 20
Overall	19,039	19,114	+75	+0.4%	+169	+855
Consultants	22	22	-0	-0.5%	-3	-2
Registrars	10	10	-0	-1.0%	+2	-1
SHO/ Interns	8	8	+0	+1.1%	-1	+0
Medical/ Dental, other	14	14				-0
Medical & Dental	54	54	-0	-0.2%	-2	-3
Nurse/ Midwife Manager	907	901	-6	-0.7%	+4	+12
Nurse/ Midwife Specialist & AN/MP	65	66	+1	+0.8%	+2	+4
Staff Nurse/ Staff Midwife	2,606	2,596	-10	-0.4%	+3	+60
Public Health Nurse	10	11	+1	+10.7%	+4	+5
Pre-registration Nurse/ Midwife Intern	81	81.23	+1	+0.7%	+79	+29
Pre-registration Nurse Intern (COVID-19)		0.36	+0	-100.0%	-31	-62
Nursing/ Midwifery awaiting registration	13	13.00				-2
Nursing/ Midwifery Student	94	95	+1	+1.0%	+47	-35
Nursing/ Midwifery other	26	26	+0	+0.3%	+2	+0
Nursing & Midwifery	3,708	3,694	-13	-0.4%	+62	+46
Therapy Professions	802	798	-5	-0.6%	+2	+28
Health Science/ Diagnostics	22	21	-1	-2.8%	+1	+2
Social Care	2,802	2,824	+22	+0.8%	+35	+228
Social Workers	232	229	-3	-1.2%	+1	+4
Psychologists	232	234	+2	+0.8%	+5	+20
Pharmacy	6	6	-0	-2.8%	+0	-0
H&SC, Other	75	73	-2	-2.5%	-2	-6
Health & Social Care Professionals	4,172	4,186	+13	+0.3%	+42	+275
Management (VIII & above)	215	213	-1	-0.5%	+10	+29
Administrative/ Supervisory (V to VII)	548	551	+3	+0.5%	+24	+50
Clerical (III & IV)	695	693	-2	-0.3%	+8	+16
Management & Administrative	1,458	1,457	-1	-0.1%	+41	+95
Support	648	650	+2	+0.4%	-12	-86
Maintenance/ Technical	130	131	+1	+0.9%	-1	+3
General Support	778	782	+4	+0.5%	-14	-84
Health Care Assistants	7,081	7,152	+72	+1.0%	+50	+435
Home Help	90	91	+1	+1.1%	-2	-9
Care, other	1,698	1,698	-0	-0.0%	-8	+99
Patient & Client Care	8,869	8,942	+72	+0.8%	+40	+525

Social Care Disability Services Employment by Administration (HSE / S38): April 2021

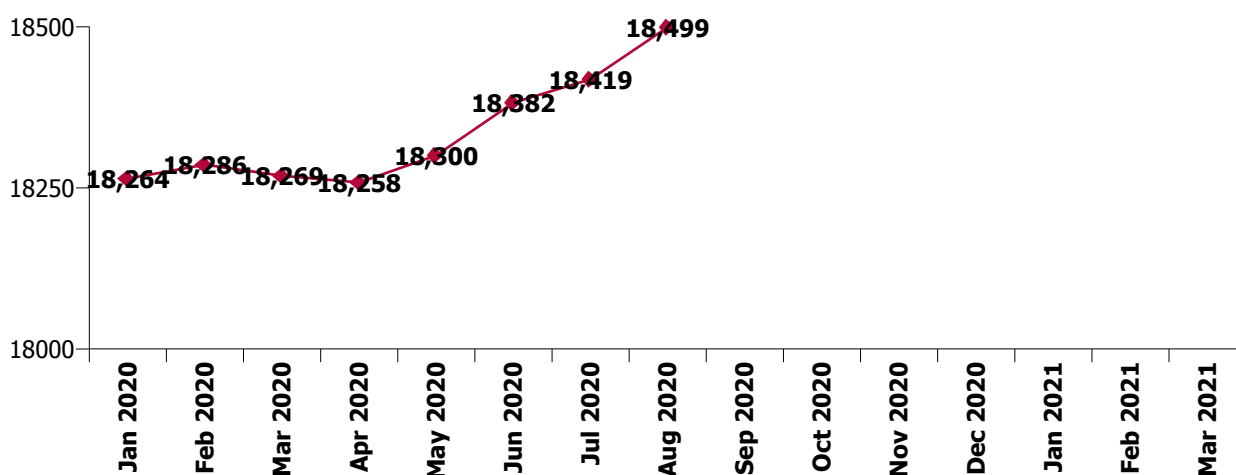
Apr 2021 (Dec 2020 figure: 18,944)	WTE Mar 2021	WTE Apr 2021	WTE change since Mar 21	% change since Mar 21	WTE change since Dec 20	WTE change since Apr 20
Overall	19,039	19,114	+75	+0.4%	+169	+855
HSE	4,181	4,207	+26	+0.6%	+122	+265
Section 38	14,858	14,907	+49	+0.3%	+47	+590

HSE

Apr 2021 (Dec 2020 figure: 4,085)	WTE Mar 2021	WTE Apr 2021	WTE change since Mar 21	% change since Mar 21	WTE change since Dec 20	WTE change since Apr 20
Overall	4,181	4,207	+26	+0.6%	+122	+265
Consultants	8	7.50			-1	-0
Registrars	3	2.80			+2	+2
SHO/ Interns				-100.0%	-2	-1
Medical/ Dental, other	6	6.23				-0
Medical & Dental	17	17			-1	+0
Nurse/ Midwife Manager	263	262.14	-1	-0.4%	+1	+11
Nurse/ Midwife Specialist & AN/MP	17	16.82			+2	+2
Staff Nurse/ Staff Midwife	786	792.45	+7	+0.9%	+20	+12
Public Health Nurse	10	11.00	+1	+10.7%	+4	+5
Pre-registration Nurse/ Midwife Intern	34	34.57	+1	+1.7%	+32	+3
Pre-registration Nurse Intern (COVID-19)				-100.0%	-9	-5
Nursing/ Midwifery awaiting registration	13	13.00				-2
Nursing/ Midwifery Student	47	47.57	+1	+1.2%	+24	-4
Nursing/ Midwifery other	8	7.73	+0	+0.7%	+1	-1
Nursing & Midwifery	1,130	1,138	+7	+0.7%	+52	+25
Therapy Professions	373	376.69	+4	+1.0%	+4	+37
Health Science/ Diagnostics	4	3.95				+1
Social Care	100	98.99	-1	-0.5%	-2	+11
Social Workers	67	66.97	+0	+0.3%	+0	+4
Psychologists	87	89.68	+2	+2.8%	+7	+16
H&SC, Other	25	23.81	-1	-5.8%	-1	+2
Health & Social Care Professionals	656	660	+4	+0.7%	+8	+71
Management (VIII & above)	64	63.56	-1	-0.9%	+6	+13
Administrative/ Supervisory (V to VII)	185	190.26	+5	+2.6%	+22	+38
Clerical (III & IV)	215	214.20	-1	-0.2%	+16	+24
Management & Administrative	464	468	+4	+0.8%	+43	+75
Support	89	89.15	-0	-0.1%	+1	+3
Maintenance/ Technical	27	25.99	-1	-3.1%	-0	+4
General Support	116	115	-1	-0.8%	+1	+7
Health Care Assistants	1,561	1,570.17	+9	+0.6%	+13	+55
Home Help	90	91.40	+1	+1.1%	-2	-9
Care, other	146	147.91	+2	+1.2%	+8	+39
Patient & Client Care	1,798	1,809	+12	+0.6%	+19	+86

Section 38

Apr 2021 (Dec 2020 figure: 14,860)	WTE Mar 2021	WTE Apr 2021	WTE change since Mar 21	% change since Mar 21	WTE change since Dec 20	WTE change since Apr 20
Overall	14,858	14,907	+49	+0.3%	+47	+590
Consultants	14	14.07	-0	-0.8%	-2	-1
Registrars	7	6.96	-0	-1.4%	-0	-2
SHO/ Interns	8	8.04	+0	+1.1%	+1	+1
Medical/ Dental, other	8	8.09				-0
Medical & Dental	37	37	-0	-0.3%	-1	-3
Nurse/ Midwife Manager	644	638.90	-5	-0.8%	+3	+1
Nurse/ Midwife Specialist & AN/MP	49	49.06	+1	+1.1%	-0	+2
Staff Nurse/ Staff Midwife	1,820	1,803.26	-17	-0.9%	-18	+48
Pre-registration Nurse/ Midwife Intern	47	46.66	+0	+0.0%	+47	+26
Pre-registration Nurse Intern (COVID-19)		0.36	+0	-100.0%	-23	-57
Nursing/ Midwifery Student	47	47.02	+0	+0.8%	+24	-31
Nursing/ Midwifery other	18	18.37	+0	+0.2%	+1	+1
Nursing & Midwifery	2,577	2,557	-21	-0.8%	+10	+21
Therapy Professions	430	420.88	-9	-2.0%	-2	-9
Health Science/ Diagnostics	18	17.00	-1	-3.4%	+1	+1
Social Care	2,703	2,724.91	+22	+0.8%	+36	+217
Social Workers	166	162.44	-3	-1.9%	+1	-1
Psychologists	145	144.61	-1	-0.4%	-2	+4
Pharmacy	6	6.20	-0	-2.8%	+0	-0
H&SC, Other	50	49.49	-0	-0.8%	-1	-8
Health & Social Care Professionals	3,517	3,526	+9	+0.3%	+34	+204
Management (VIII & above)	150	149.87	-0	-0.3%	+4	+16
Administrative/ Supervisory (V to VII)	363	360.53	-2	-0.6%	+2	+12
Clerical (III & IV)	480	478.58	-2	-0.4%	-8	-8
Management & Administrative	994	989	-5	-0.5%	-2	+19
General Support	662	666	+5	+0.7%	-15	-91
Patient & Client Care	7,071	7,132	+61	+0.9%	+21	+440



Social Care Disability Services Employment by CHO Apr 2021

CHO 1

Apr 2021 (Dec 2020 figure: 1,547)	WTE Mar 2021	WTE Apr 2021	WTE change since Mar 21	% change since Mar 21	WTE change since Dec 20	WTE change since Apr 20
Overall	1,575	1,591	+17	+1.1%	+45	+66
Medical/ Dental, other	3	3				-0
Medical & Dental	3	3				-0
Nurse/ Midwife Manager	106	105	-1	-1.0%	-1	-0
Nurse/ Midwife Specialist & AN/MP	10	10			+1	+2
Staff Nurse/ Staff Midwife	335	339	+5	+1.4%	+11	+21
Public Health Nurse		1	+1	-100.0%	+1	+1
Public Health Nurse		1	+1	-100.0%	+1	+1
Pre-registration Nurse/ Midwife Intern	24	23	-0	-0.1%	+20	-2
Pre-registration Nurse Intern (COVID-19)				-100.0%		
Nursing/ Midwifery awaiting registration	11	11				
Nursing/ Midwifery Student	35	34	-0	-0.1%	+17	-2
Nursing/ Midwifery other	4	4				-1
Nursing & Midwifery	489	494	+5	+0.9%	+29	+21
Therapy Professions	41	43	+2	+6.1%	-1	-5
Social Care	11	11	-0	-0.2%	-1	+2
Social Workers	18	17	-1	-3.0%	-1	-2
Psychologists	11	12	+1	+7.9%	+5	+7
H&SC, Other	10	9	-1	-11.6%	-1	-0
Health & Social Care Professionals	90	92	+2	+1.9%	+1	+2
Management (VIII & above)	17	17				+3
Administrative/ Supervisory (V to VII)	36	37	+1	+1.7%	+3	+3
Clerical (III & IV)	52	54	+2	+3.2%	+1	+5
Management & Administrative	105	107	+2	+2.2%	+4	+11
Support	49	49	-1	-1.2%	-0	-2
Maintenance/ Technical	6	6				
General Support	55	55	-1	-1.0%	-0	-2
Health Care Assistants	777	786	+9	+1.1%	+11	+29
Home Help	15	14	-1	-4.3%	+0	+0
Care, other	40	41	+1	+2.0%	+0	+4
Patient & Client Care	832	841	+9	+1.1%	+11	+33

CHO 2

Apr 2021 (Dec 2020 figure: 1,516)	WTE Mar 2021	WTE Apr 2021	WTE change since Mar 21	% change since Mar 21	WTE change since Dec 20	WTE change since Apr 20
Overall	1,510	1,516	+6	+0.4%	+1	+77
Consultants	3	3				-0
Registrars	2	2	-0	-2.5%	-0	-0
Medical/ Dental, other	1	1				
Medical & Dental	6	6	-0	-0.8%	-0	-0
Nurse/ Midwife Manager	79	81	+1	+1.7%	+3	+5
Nurse/ Midwife Specialist & AN/MP	7	7	+0	+0.9%	+1	+1
Staff Nurse/ Staff Midwife	168	163	-5	-2.8%	-6	-3
<i>Pre-registration Nurse Intern (COVID-19)</i>				-100.0%		
Nursing/ Midwifery Student				-100.0%	-1	
Nursing & Midwifery	254	251	-3	-1.3%	-3	+4
Therapy Professions	34	34	-0	-0.8%	+0	-3
Social Care	246	250	+4	+1.6%	+7	+20
Social Workers	27	27	+1	+1.9%	+1	+1
Psychologists	15	15	-0	-0.1%	+1	-0
H&SC, Other	10	11	+1	+7.8%	-0	-3
Health & Social Care Professionals	333	338	+5	+1.5%	+9	+15
Management (VIII & above)	16	16	-0	-0.1%	+0	+1
Administrative/ Supervisory (V to VII)	43	44	+1	+2.7%	-1	+3
Clerical (III & IV)	51	50	-1	-1.9%	-0	+2
Management & Administrative	109	109	+0	+0.2%	-1	+6
Support	41	42	+1	+2.3%	-1	+3
Maintenance/ Technical	13	13				-0
General Support	54	55	+1	+1.8%	-1	+3
Health Care Assistants	620	626	+5	+0.9%	+1	+42
Care, other	133	131	-2	-1.4%	-4	+8
Patient & Client Care	753	757	+4	+0.5%	-4	+50

CHO 3

Apr 2021 (Dec 2020 figure: 1,947)	WTE Mar 2021	WTE Apr 2021	WTE change since Mar 21	% change since Mar 21	WTE change since Dec 20	WTE change since Apr 20
Overall	1,951	1,939	-11	-0.6%	-8	+103
Consultants	1	1			-1	-0
Medical/ Dental, other	1	1				
Medical & Dental	2	2			-1	-0
Nurse/ Midwife Manager	77	76	-2	-2.1%	+1	-0
Nurse/ Midwife Specialist & AN/MP	9	9			-1	-2
Staff Nurse/ Staff Midwife	264	261	-3	-1.0%	-9	+11
Pre-registration Nurse/ Midwife Intern	8	8			-4	+8
Pre-registration Nurse Intern (COVID-19)				-100.0%		-24
Nursing/ Midwifery Student	8	8			+7	-16
Nursing/ Midwifery other	4	4				
Nursing & Midwifery	362	358	-4	-1.2%	-3	-7
Therapy Professions	81	78	-3	-3.6%	-6	+2
Health Science/ Diagnostics	2	2				+1
Social Care	282	280	-2	-0.7%	-4	+40
Social Workers	17	17	-0	-2.2%	-1	+0
Psychologists	19	19	+0	+0.1%	-2	-0
H&SC, Other	11	11	-0	-1.6%	-0	-1
Health & Social Care Professionals	412	407	-5	-1.3%	-12	+42
Management (VIII & above)	8	8				+1
Administrative/ Supervisory (V to VII)	46	46	-1	-1.1%	+1	+5
Clerical (III & IV)	58	58	+0	+0.5%	-1	-3
Management & Administrative	112	111	-0	-0.2%	+0	+3
Support	53	54	+1	+1.6%	+1	-1
Maintenance/ Technical	20	20			+1	+5
General Support	73	74	+1	+1.2%	+2	+4
Health Care Assistants	805	806	+1	+0.1%	+6	+57
Care, other	184	181	-3	-1.6%	-1	+4
Patient & Client Care	989	987	-2	-0.2%	+6	+61

CHO 4

Apr 2021 (Dec 2020 figure: 2,556)	WTE Mar 2021	WTE Apr 2021	WTE change since Mar 21	% change since Mar 21	WTE change since Dec 20	WTE change since Apr 20
Overall	2,588	2,582	-6	-0.2%	+26	+143
Consultants	3	3				+1
Medical/ Dental, other	0	0				
Medical & Dental	3	3				+1
Nurse/ Midwife Manager	89	87	-2	-2.5%	-4	-3
Nurse/ Midwife Specialist & AN/MP	13	14	+1	+3.7%	-1	+1
Staff Nurse/ Staff Midwife	317	311	-6	-2.0%	-1	+3
Pre-registration Nurse/ Midwife Intern	9	10	+1	+11.1%	+4	+3
Pre-registration Nurse Intern (COVID-19)				-100.0%		
Nursing/ Midwifery awaiting registration	2	2			+1	+2
Nursing/ Midwifery Student	11	12	+1	+9.1%	+2	+5
Nursing/ Midwifery other				-100.0%		-1
Nursing & Midwifery	431	424	-7	-1.6%	-3	+4
Therapy Professions	104	103	-1	-1.2%	-1	-1
Social Care	242	241	-1	-0.6%	+2	+10
Social Workers	28	27	-1	-4.5%	-0	-0
Psychologists	36	37	+1	+1.4%	+1	+3
H&SC, Other	10	10	-1	-6.2%	-1	+1
Health & Social Care Professionals	421	417	-4	-1.0%	+1	+13
Management (VIII & above)	22	22	+0	+0.1%	-0	+0
Administrative/ Supervisory (V to VII)	58	56	-2	-3.0%	-1	+2
Clerical (III & IV)	91	92	+1	+1.1%	+2	+3
Management & Administrative	171	170	-1	-0.4%	+1	+6
Support	136	143	+6	+4.8%	+4	+4
Maintenance/ Technical	12	12	-0	-0.0%	-0	+2
General Support	148	155	+6	+4.4%	+4	+6
Health Care Assistants	1,075	1,074	-2	-0.2%	+15	+69
Care, other	339	340	+1	+0.2%	+8	+44
Patient & Client Care	1,414	1,413	-1	-0.1%	+23	+113

CHO 5

Apr 2021 (Dec 2020 figure: 1,563)	WTE Mar 2021	WTE Apr 2021	WTE change since Mar 21	% change since Mar 21	WTE change since Dec 20	WTE change since Apr 20
Overall	1,609	1,613	+4	+0.3%	+50	+119
Consultants	1	1	-0	-12.9%		-0
Medical & Dental	1	1	-0	-12.9%		-0
Nurse/ Midwife Manager	73	74	+1	+0.8%	+4	+6
Nurse/ Midwife Specialist & AN/MP	3	3			+1	+1
Staff Nurse/ Staff Midwife	163	164	+1	+0.5%	-5	-7
Public Health Nurse	9	9	+0	+0.7%	+3	+4
Pre-registration Nurse/ Midwife Intern	9	9	+0	+1.1%	+9	+7
Pre-registration Nurse Intern (COVID-19)				-100.0%		-4
Nursing/ Midwifery awaiting registration				-100.0%	-2	-4
Nursing/ Midwifery Student	9	9	+0	+1.1%	+8	-1
Nursing Education/Clinical	1	1	+0	+6.3%	+1	+1
Nursing/ Midwifery other	1	1	+0	+6.3%	+1	+1
Nursing & Midwifery	257	259	+2	+0.7%	+12	+5
Therapy Professions	77	76	-2	-2.1%	+11	+15
Social Care	142	137	-5	-3.3%	-6	-4
Social Workers	25	26	+0	+0.6%	+1	+3
Psychologists	22	22	+1	+4.3%	+3	+9
H&SC, Other	5	5	+0	+3.4%	+0	-1
Health & Social Care Professionals	271	266	-5	-1.8%	+10	+23
Management (VIII & above)	16	15	-0	-2.8%	+3	+3
Administrative/ Supervisory (V to VII)	48	51	+2	+4.8%	+10	+9
Clerical (III & IV)	68	65	-3	-4.5%	+3	+7
Management & Administrative	132	131	-1	-0.9%	+16	+19
Support	11	11	+0	+0.6%	-1	-1
Maintenance/ Technical	6	6			-1	-1
General Support	17	17	+0	+0.4%	-2	-2
Health Care Assistants	736	744	+7	+1.0%	+12	+70
Home Help	37	39	+1	+3.5%	-1	-7
Care, other	156	157	+1	+0.4%	+4	+12
Patient & Client Care	930	939	+9	+1.0%	+15	+74

CHO 6

Apr 2021 (Dec 2020 figure: 1,217)	WTE Mar 2021	WTE Apr 2021	WTE change since Mar 21	% change since Mar 21	WTE change since Dec 20	WTE change since Apr 20
Overall	1,209	1,225	+16	+1.3%	+8	+66
Consultants	3	3				
Registrars	1	1			+1	+1
Medical/ Dental, other	1	1				
Medical & Dental	5	5			+1	+1
Nurse/ Midwife Manager	42	44	+2	+3.6%	+0	-0
Staff Nurse/ Staff Midwife	144	142	-2	-1.3%	-1	+4
Nursing & Midwifery	186	186	-0	-0.2%	-0	+4
Therapy Professions	45	44	-1	-2.2%	+1	+5
Social Care	359	366	+8	+2.1%	+5	+49
Social Workers	10	10			+0	+2
Psychologists	14	14	-0	-1.1%	+0	-1
H&SC, Other	1	1	-0	-13.2%	-0	-1
Health & Social Care Professionals	429	435	+6	+1.5%	+7	+55
Management (VIII & above)	30	30	-1	-1.7%	-0	+0
Administrative/ Supervisory (V to VII)	56	57	+1	+2.3%	+3	+2
Clerical (III & IV)	60	57	-3	-4.6%	+2	-4
Management & Administrative	147	145	-2	-1.3%	+5	-1
Support	22	21	-0	-0.3%	-4	-18
Maintenance/ Technical	5	6	+1	+20.0%	+1	-2
General Support	27	27	+1	+3.5%	-3	-20
Health Care Assistants	187	192	+5	+2.7%	+8	+24
Care, other	229	235	+6	+2.6%	-10	+3
Patient & Client Care	416	427	+11	+2.6%	-2	+27

CHO 7

Apr 2021 (Dec 2020 figure: 3,103)	WTE Mar 2021	WTE Apr 2021	WTE change since Mar 21	% change since Mar 21	WTE change since Dec 20	WTE change since Apr 20
Overall	3,074	3,086	+12	+0.4%	-17	+108
Consultants	1	1				
Registrars	3	3	-0	-1.6%	+0	-0
SHO/ Interns	8	8	+0	+1.1%	+1	+1
Medical/ Dental, other	1	1				
Medical & Dental	13	13	+0	+0.3%	+1	+1
Nurse/ Midwife Manager	125	124	-2	-1.2%	+5	+2
Nurse/ Midwife Specialist & AN/MP	4	4				-1
Staff Nurse/ Staff Midwife	375	374	-1	-0.4%	-4	+8
Pre-registration Nurse/ Midwife Intern	8	8			+8	+7
Pre-registration Nurse Intern (COVID-19)				-100.0%		-7
Nursing/ Midwifery Student	8	8			+8	
Nursing/ Midwifery other	3	3			+1	+2
Nursing & Midwifery	515	512	-3	-0.6%	+10	+11
Therapy Professions	133	131	-2	-1.8%	-7	+1
Health Science/ Diagnostics	4	3	-1	-16.7%		
Social Care	386	389	+4	+1.0%	+1	+30
Social Workers	33	31	-2	-5.6%	-0	-4
Psychologists	29	28	-1	-4.4%	-4	-2
Pharmacy	4	4	-0	-4.1%	+0	-0
H&SC, Other	2	2				
Health & Social Care Professionals	591	588	-3	-0.4%	-11	+24
Management (VIII & above)	45	44	-1	-2.7%	+2	+6
Administrative/ Supervisory (V to VII)	90	90	+0	+0.4%	-1	+8
Clerical (III & IV)	98	100	+2	+1.8%	-1	+2
Management & Administrative	233	234	+1	+0.4%	-1	+15
Support	148	145	-3	-2.4%	-11	-19
Maintenance/ Technical	33	33	+0	+0.3%	-0	+2
General Support	181	177	-3	-1.9%	-11	-18
Health Care Assistants	1,125	1,149	+24	+2.1%	+2	+60
Home Help	17	17	+0	+2.6%	-0	-1
Care, other	400	395	-4	-1.1%	-7	+16
Patient & Client Care	1,541	1,561	+20	+1.3%	-5	+75

CHO 8

Apr 2021 (Dec 2020 figure: 2,205)	WTE Mar 2021	WTE Apr 2021	WTE change since Mar 21	% change since Mar 21	WTE change since Dec 20	WTE change since Apr 20
Overall	2,221	2,245	+25	+1.1%	+40	+79
Consultants				-100.0%	-1	-1
Registrars	1	1				
Medical/ Dental, other	1	1				
Medical & Dental	2	2			-1	-1
Nurse/ Midwife Manager	121	119	-3	-2.1%	-0	+2
Nurse/ Midwife Specialist & AN/MP	5	5	-0	-0.6%	-1	-2
Staff Nurse/ Staff Midwife	321	323	+3	+0.9%	+11	+7
Public Health Nurse	1	1			-0	
Pre-registration Nurse/ Midwife Intern	6	5	-0	-8.5%	+5	-7
Pre-registration Nurse Intern (COVID-19)		0	+0	-100.0%	+0	-8
Nursing/ Midwifery Student	6	6	-0	-2.1%	+2	-14
Nursing/ Midwifery other	7	7	+0	+0.6%	+0	-0
Nursing & Midwifery	461	461	+0	+0.1%	+12	-8
Therapy Professions	94	97	+3	+2.9%	-1	+5
Health Science/ Diagnostics	2	2				
Social Care	376	380	+4	+1.1%	-0	+13
Social Workers	25	27	+1	+5.1%	+2	+2
Psychologists	25	25	+1	+2.2%	+3	+1
H&SC, Other	7	7	+0	+4.8%	+1	+1
Health & Social Care Professionals	529	538	+9	+1.7%	+5	+22
Management (VIII & above)	14	15	+1	+7.2%	+2	+4
Administrative/ Supervisory (V to VII)	54	54	-0	-0.1%	-2	-6
Clerical (III & IV)	89	88	-1	-1.0%	+1	+0
Management & Administrative	158	158	+0	+0.0%	+0	-2
Support	41	41	-0	-1.0%	-1	-4
Maintenance/ Technical	13	14	+1	+7.7%	+0	-2
General Support	54	55	+1	+1.1%	-1	-6
Health Care Assistants	879	892	+13	+1.5%	+21	+70
Home Help	22	22	-0	-0.5%	-1	-1
Care, other	117	119	+2	+1.4%	+5	+4
Patient & Client Care	1,018	1,033	+15	+1.4%	+24	+73

CHO 9

Apr 2021 (Dec 2020 figure: 3,285)	WTE Mar 2021	WTE Apr 2021	WTE change since Mar 21	% change since Mar 21	WTE change since Dec 20	WTE change since Apr 20
Overall	3,298	3,310	+12	+0.4%	+25	+93
Consultants	10	10			-1	-1
Registrars	3	3			+1	-1
SHO/ Interns				-100.0%	-2	-1
Medical/ Dental, other	6	6				-0
Medical & Dental	19	19			-2	-3
Nurse/ Midwife Manager	193	192	-0	-0.2%	-3	+1
Nurse/ Midwife Specialist & AN/MP	13	13			+1	+4
Staff Nurse/ Staff Midwife	520	519	-2	-0.3%	+6	+15
Pre-registration Nurse/ Midwife Intern	18	18			+10	+13
Pre-registration Nurse Intern (COVID-19)				-100.0%		-20
Nursing/ Midwifery Student	18	18			+5	-7
Nursing/ Midwifery other	8	8			+0	-1
Nursing & Midwifery	753	750	-2	-0.3%	+9	+11
Therapy Professions	192	192	-1	-0.3%	+5	+9
Health Science/ Diagnostics	14	14			+1	+1
Social Care	759	770	+10	+1.4%	+30	+68
Social Workers	49	48	-1	-1.7%	-2	+1
Psychologists	62	62	+0	+0.6%	-2	+3
Pharmacy	2	2				
H&SC, Other	18	17	-1	-5.9%	-1	-2
Health & Social Care Professionals	1,096	1,105	+8	+0.8%	+31	+80
Management (VIII & above)	45	45	+0	+0.2%	+4	+10
Administrative/ Supervisory (V to VII)	113	112	-1	-0.8%	+12	+23
Clerical (III & IV)	126	127	+1	+0.5%	+1	+4
Management & Administrative	285	285	-0	-0.1%	+17	+37
Support	147	146	-1	-0.9%	+1	-48
Maintenance/ Technical	22	21	-1	-4.2%	-2	-1
General Support	169	167	-2	-1.4%	-1	-49
Health Care Assistants	876	885	+9	+1.0%	-26	+15
Care, other	100	99	-1	-0.6%	-2	+3
Patient & Client Care	976	984	+8	+0.8%	-29	+18

other Community Services

Apr 2021 (Dec 2020 figure: 6)	WTE Mar 2021	WTE Apr 2021	WTE change since Mar 21	% change since Mar 21	WTE change since Dec 20	WTE change since Apr 20
Overall	6	6				+1
Management (VIII & above)	1	1				
Administrative/ Supervisory (V to VII)	3	3				+1
Clerical (III & IV)	2	2				
Management & Administrative	6	6				+1

Social Care Disability Services Employment by CHO & Admin : Apr 2021

Apr 2021 (Dec 2020 figure: 18,944)	WTE Mar 2021	WTE Apr 2021	WTE change since Mar 21	% change since Mar 21	WTE change since Dec 20	WTE change since Apr 20
Overall	19,039	19,114	+75	+0.4%	+169	+855
CHO 1	1,575	1,591	+17	+1.1%	+45	+66
Health Service Executive	218	219	+1	+0.4%	+1	+13
Bros. of Charity, West Region	1,292	1,297	+6	+0.4%	-0	+64
Section 38 Voluntary Agencies	1,292	1,297	+6	+0.4%	-0	+64
CHO 2	1,510	1,516	+6	+0.4%	+1	+77
Health Service Executive	144	141	-3	-2.1%	-4	+15
Bros. of Charity, Clare	383	380	-3	-0.9%	+8	+57
Bros. of Charity, Limerick	578	576	-3	-0.5%	-17	+48
Daughters of Charity, Limerick	553	550	-3	-0.6%	+1	-18
Daughters of Charity, Roscrea	291	292	+1	+0.4%	+3	+1
Section 38 Voluntary Agencies	1,806	1,798	-8	-0.5%	-4	+88
CHO 3	1,951	1,939	-11	-0.6%	-8	+103
Health Service Executive	324	325	+1	+0.3%	+11	+23
Bros. of Charity, Southern	786	781	-5	-0.6%	+6	+45
Cope Foundation	1,152	1,146	-6	-0.5%	-1	+55
St. John of God, Kerry	326	330	+3	+1.0%	+10	+21
Section 38 Voluntary Agencies	2,264	2,257	-7	-0.3%	+15	+121
CHO 4	2,588	2,582	-6	-0.2%	+26	+143
Health Service Executive	436	440	+3	+0.8%	+45	+59
Bros. of Charity, Waterford	676	681	+5	+0.8%	+13	+67
Carriglea Cairde Services	212	212	-0	-0.1%	-2	+1
St. Patrick's, Kilkenny	284	280	-4	-1.3%	-7	-7
Section 38 Voluntary Agencies	1,172	1,173	+1	+0.1%	+5	+61
CHO 5	1,609	1,613	+4	+0.3%	+50	+119
Health Service Executive	243	242	-1	-0.5%	-1	+11
Children's Sunshine Home	57	56	-1	-1.8%	-0	-2
St. John of God (IDS)	458	459	+1	+0.2%	-9	+10
Sunbeam House Services	451	468	+17	+3.9%	+19	+46
Section 38 Voluntary Agencies	965	983	+17	+1.8%	+10	+54
CHO 6	1,209	1,225	+16	+1.3%	+8	+66
Health Service Executive	131	130	-0	-0.4%	-5	+15
Cheeverstown House	394	396	+2	+0.5%	+2	-2
Kare, Newbridge, Co Kildare	374	383	+9	+2.4%	+6	+21
Peamount Hospital (Newcastle)	475	475	-0	-0.0%	-8	-10
Stewart's Hospital, (Palmerstown)	921	926	+5	+0.5%	+12	+63
St. John of God Liffey Services	778	776	-3	-0.3%	-25	+22
Section 38 Voluntary Agencies	2,943	2,956	+13	+0.4%	-12	+93
CHO 7	3,074	3,086	+12	+0.4%	-17	+108
Health Service Executive	604	614	+9	+1.5%	+3	+8
Muiriosa Foundation, Laois/Offaly	335	343	+8	+2.5%	+22	+43
Muiriosa Foundation, Longford/Westmeath	292	291	-1	-0.3%	+7	+20
Muiriosa Foundation, South Kildare	343	341	-2	-0.7%	-1	-7
St. John of God, Drumcar	646	657	+10	+1.6%	+8	+15

Apr 2021 (Dec 2020 figure: 18,944)	WTE Mar 2021	WTE Apr 2021	WTE change since Mar 21	% change since Mar 21	WTE change since Dec 20	WTE change since Apr 20
Overall	19,039	19,114	+75	+0.4%	+169	+855
Section 38 Voluntary Agencies	1,616	1,632	+15	+1.0%	+37	+71
CHO 8	2,221	2,245	+25	+1.1%	+40	+79
Health Service Executive	500	499	-0	-0.1%	+27	+54
Central Remedial Clinic	298	297	-1	-0.3%	+1	+11
Daughters of Charity, Dublin	1,075	1,069	-6	-0.6%	+5	-4
St. Michael's House, Dublin	1,426	1,445	+19	+1.3%	-8	+31
Section 38 Voluntary Agencies	2,799	2,811	+12	+0.4%	-2	+39
CHO 9	3,298	3,310	+12	+0.4%	+25	+93
other Community Services	6	6				+1

Social Care Disability Services Employment by CHO Apr 2021

Bros. of Charity, Clare

Apr 2021 (Dec 2020 figure: 372)	WTE Mar 2021	WTE Apr 2021	WTE change since Mar 21	% change since Mar 21	WTE change since Dec 20	WTE change since Apr 20
Overall	383	380	-3	-0.9%	+8	+57
Consultants	0	0			-0	-0
Medical & Dental	0	0			-0	-0
Staff Nurse/ Staff Midwife	3	3	+0	+0.7%	+1	+1
<i>Pre-registration Nurse Intern (COVID-19)</i>				-100.0%		-1
Nursing/ Midwifery Student				-100.0%	-1	-1
Nursing & Midwifery	3	3	+0	+0.7%	-0	+0
Social Care	84	86	+2	+2.0%	+1	+9
Social Workers	3	3				+0
Psychologists	2	2			-0	-0
H&SC, Other	4	4				
Health & Social Care Professionals	93	95	+2	+1.8%	+0	+9
Management (VIII & above)	1	1				
Administrative/ Supervisory (V to VII)	5	5			+0	
Clerical (III & IV)	5	5			+0	+0
Management & Administrative	11	11			+0	+0
Health Care Assistants	243	239	-5	-1.9%	+6	+48
Care, other	33	33	-0	-1.2%	+1	+0
Patient & Client Care	276	271	-5	-1.8%	+7	+48

Apr 2021 (Dec 2020 figure: 592)	WTE Mar 2021	WTE Apr 2021	WTE change since Mar 21	% change since Mar 21	WTE change since Dec 20	WTE change since Apr 20
Overall	578	576	-3	-0.5%	-17	+48
Consultants	1	1			-1	
Medical & Dental	1	1			-1	
Nurse/ Midwife Manager	29	29	+0	+1.2%	+1	+3
Nurse/ Midwife Specialist & AN/MP	4	4				
Staff Nurse/ Staff Midwife	91	89	-2	-2.1%	-8	+2
Nursing & Midwifery	124	122	-2	-1.3%	-8	+5
Therapy Professions	14	14			-1	+1
Social Care	102	100	-2	-2.1%	-5	+13
Social Workers	6	6	-0	-0.3%	+1	+1
Psychologists	6	6	-0	-0.7%		-0
H&SC, Other	0		-0	-100.0%	-1	-1
Health & Social Care Professionals	129	126	-3	-2.0%	-5	+14
Management (VIII & above)	2	2				
Administrative/ Supervisory (V to VII)	7	7	+0	+0.8%	+1	+1
Clerical (III & IV)	10	10	-0	-0.2%	-1	-2
Management & Administrative	19	19	+0	+0.2%	+0	-1
Support	7	8	+1	+12.8%	+1	+1
Maintenance/ Technical	2	2				
General Support	9	10	+1	+9.8%	+1	+1
Health Care Assistants	198	202	+3	+1.7%	-3	+24
Care, other	99	96	-3	-2.9%	-2	+5
Patient & Client Care	298	298	+0	+0.1%	-5	+29

Apr 2021 (Dec 2020 figure: 776)	WTE Mar 2021	WTE Apr 2021	WTE change since Mar 21	% change since Mar 21	WTE change since Dec 20	WTE change since Apr 20
Overall	786	781	-5	-0.6%	+6	+45
Nurse/ Midwife Manager	13	13	+0	+0.8%	-2	-2
Nurse/ Midwife Specialist & AN/MP	2	2	+1	+25.8%	-1	-1
Staff Nurse/ Staff Midwife	57	55	-1	-1.9%	-0	-4
Nursing & Midwifery	71	71	-0	-0.7%	-3	-7
Therapy Professions	47	46	-2	-3.7%	-0	+1
Social Care	126	123	-3	-2.6%	+0	-3
Social Workers	18	17	-1	-6.9%	-0	-0
Psychologists	21	21	+0	+0.6%	+0	+2
Health & Social Care Professionals	213	207	-6	-2.9%	+0	-0
Management (VIII & above)	8	8				-0
Administrative/ Supervisory (V to VII)	12	12			+2	+2
Clerical (III & IV)	35	35	+0	+1.1%	-0	-1
Management & Administrative	54	55	+0	+0.7%	+2	+1
Support	13	12	-0	-3.4%	-2	-3
Maintenance/ Technical	3	3				+1
General Support	15	15	-0	-2.9%	-2	-2
Health Care Assistants	224	222	-2	-0.8%	-0	+15
Care, other	209	213	+4	+1.8%	+9	+38
Patient & Client Care	433	435	+2	+0.4%	+9	+53

Apr 2021 (Dec 2020 figure: 668)	WTE Mar 2021	WTE Apr 2021	WTE change since Mar 21	% change since Mar 21	WTE change since Dec 20	WTE change since Apr 20
Overall	676	681	+5	+0.8%	+13	+67
Consultants	1	1	-0	-12.9%		-0
Medical & Dental	1	1	-0	-12.9%		-0
Nurse/ Midwife Manager	22	23	+0	+2.2%	+0	-0
Staff Nurse/ Staff Midwife	49	47	-2	-3.2%	-2	-1
Pre-registration Nurse/ Midwife Intern	6	6	-1	-8.3%	+6	+6
Pre-registration Nurse Intern (COVID-19)				-100.0%		-4
Nursing/ Midwifery Student	6	6	-1	-8.3%	+6	+2
Nursing & Midwifery	77	76	-2	-2.0%	+4	+1
Therapy Professions	2	2			+1	-1
Social Care	71	69	-2	-3.1%	-2	+4
Social Workers	8	8	+0	+2.9%	+0	-2
Psychologists	4	4				
H&SC, Other	4	4	+0	+5.0%	+0	
Health & Social Care Professionals	88	87	-2	-2.1%	-1	+2
Management (VIII & above)	5	5				
Administrative/ Supervisory (V to VII)	16	17	+1	+3.3%	+1	+1
Clerical (III & IV)	26	25	-1	-4.4%	-2	+1
Management & Administrative	47	47	-1	-1.3%	-1	+2
Support	1	1			-0	-0
Maintenance/ Technical	3	3				
General Support	4	4			-0	-0
Health Care Assistants	363	372	+9	+2.5%	+10	+57
Care, other	95	95	+0	+0.3%	+2	+6
Patient & Client Care	458	467	+9	+2.0%	+12	+63

Carriglea Cairde Services

Apr 2021 (Dec 2020 figure: 214)	WTE Mar 2021	WTE Apr 2021	WTE change since Mar 21	% change since Mar 21	WTE change since Dec 20	WTE change since Apr 20
Overall	212	212	-0	-0.1%	-2	+1
Nurse/ Midwife Manager	13	13	-0	-0.1%		+0
Staff Nurse/ Staff Midwife	24	25	+1	+3.8%	-2	-1
<i>Pre-registration Nurse/ Midwife Intern</i>				-100.0%		-2
Nursing/ Midwifery Student				-100.0%		-2
Nursing & Midwifery	37	38	+1	+2.4%	-2	-3
Social Care	28	29	+1	+2.2%	-1	-5
Health & Social Care Professionals	28	29	+1	+2.2%	-1	-5
Management (VIII & above)	2	2				
Administrative/ Supervisory (V to VII)	3	3				
Clerical (III & IV)	6	6	+0	+0.3%	+0	+1
Management & Administrative	11	11	+0	+0.2%	+0	+1
Support	5	5	+0	+0.2%	-1	+1
Maintenance/ Technical	1	1				
General Support	7	7	+0	+0.2%	-1	+1
Health Care Assistants	85	83	-2	-2.3%	+3	+11
Care, other	44	45	+0	+0.4%	-0	-5
Patient & Client Care	129	127	-2	-1.4%	+3	+6

Central Remedial Clinic

Apr 2021 (Dec 2020 figure: 296)	WTE Mar 2021	WTE Apr 2021	WTE change since Mar 21	% change since Mar 21	WTE change since Dec 20	WTE change since Apr 20
Overall	298	297	-1	-0.3%	+1	+11
Consultants	1	1				
Medical/ Dental, other	0	0				
Medical & Dental	2	2				
Nurse/ Midwife Manager	2	2				
Nurse/ Midwife Specialist & AN/MP	2	2				+1
Staff Nurse/ Staff Midwife	4	4			-1	-1
Nursing/ Midwifery other	1	1				
Nursing & Midwifery	8	8			-1	+0
Therapy Professions	78	76	-2	-2.9%	-2	-2
Health Science/ Diagnostics	14	14			+1	+1
Social Workers	9	9			+1	-0
Psychologists	13	12	-1	-6.2%	-1	+1
Health & Social Care Professionals	114	111	-3	-2.7%	-1	+0
Management (VIII & above)	7	7				
Administrative/ Supervisory (V to VII)	14	14			-1	-1
Clerical (III & IV)	34	33	-1	-2.3%	-1	+1
Management & Administrative	56	55	-1	-1.4%	-2	-0
Support	13	13			+1	-1
Maintenance/ Technical	2	2				+1
General Support	15	15			+1	
Health Care Assistants	57	58	+1	+1.6%	+0	+2
Care, other	46	48	+2	+4.4%	+4	+9
Patient & Client Care	103	106	+3	+2.8%	+4	+11

Apr 2021 (Dec 2020 figure: 395)	WTE Mar 2021	WTE Apr 2021	WTE change since Mar 21	% change since Mar 21	WTE change since Dec 20	WTE change since Apr 20
Overall	394	396	+2	+0.5%	+2	-2
Consultants	0	0				
Medical/ Dental, other	1	1				
Medical & Dental	1	1				
Nurse/ Midwife Manager	28	29	+1	+3.6%	+2	+1
Nurse/ Midwife Specialist & AN/MP	2	2				
Staff Nurse/ Staff Midwife	104	102	-2	-2.1%	-4	-1
Nursing & Midwifery	134	133	-1	-0.9%	-2	-0
Therapy Professions	13	12	-1	-7.5%	-1	
Social Care	38	40	+2	+5.2%	+6	+4
Social Workers	5	5			+1	-1
Psychologists	3	3			-2	-2
Pharmacy	0	0				
H&SC, Other	2	2				
Health & Social Care Professionals	61	62	+1	+1.6%	+4	+2
Management (VIII & above)	3	3				+1
Administrative/ Supervisory (V to VII)	15	16	+1	+6.8%	+1	+2
Clerical (III & IV)	11	11			-1	-1
Management & Administrative	29	30	+1	+3.4%	-0	+2
Support	27	27			-0	-0
Maintenance/ Technical	4	4				
General Support	30	30			-0	-0
Health Care Assistants	126	127	+1	+1.0%	-1	-6
Care, other	12	12			+2	+0
Patient & Client Care	138	140	+1	+0.9%	+0	-5

Children's Sunshine Home

Apr 2021 (Dec 2020 figure: 56)	WTE Mar 2021	WTE Apr 2021	WTE change since Mar 21	% change since Mar 21	WTE change since Dec 20	WTE change since Apr 20
Overall	57	56	-1	-1.8%	-0	-2
Nurse/ Midwife Manager	8	8				
Staff Nurse/ Staff Midwife	18	17	-1	-5.5%	-1	-2
Nursing & Midwifery	26	25	-1	-3.8%	-1	-2
Therapy Professions	2	2			+1	-0
Social Workers				-100.0%	-1	-1
Health & Social Care Professionals	2	2			-0	-1
Management (VIII & above)	3	3			+1	
Administrative/ Supervisory (V to VII)	4	4				
<i>General Administrative (III & IV)</i>	1	1				
Clerical (III & IV)	1	1				
Management & Administrative	8	8			+1	
Support	3	3				
General Support	3	3				
Health Care Assistants	13	13				-1
Care, other	5	5				+2
Patient & Client Care	18	18				+1

Apr 2021 (Dec 2020 figure: 1,147)	WTE Mar 2021	WTE Apr 2021	WTE change since Mar 21	% change since Mar 21	WTE change since Dec 20	WTE change since Apr 20
Overall	1,152	1,146	-6	-0.5%	-1	+55
Nurse/ Midwife Manager	42	42				+1
Nurse/ Midwife Specialist & AN/MP	11	11				+1
Staff Nurse/ Staff Midwife	180	173	-7	-3.9%	-4	+3
Pre-registration Nurse/ Midwife Intern	8	9	+1	+12.5%	+3	+3
Pre-registration Nurse Intern (COVID-19)				-100.0%		
Nursing/ Midwifery Student	8	9	+1	+12.5%	+1	+3
Nursing/ Midwifery other				-100.0%		-1
Nursing & Midwifery	241	235	-6	-2.5%	-3	+8
Therapy Professions	37	37			-0	-1
Social Care	43	43				+9
Social Workers	9	9				
Psychologists	11	11				
H&SC, Other	3	3				
Health & Social Care Professionals	102	102			-0	+8
Management (VIII & above)	7	7				+1
Administrative/ Supervisory (V to VII)	23	19	-4	-16.7%	-4	-0
Clerical (III & IV)	26	26				+2
Management & Administrative	55	52	-4	-6.9%	-4	+3
Support	78	85	+7	+8.6%	+7	+8
Maintenance/ Technical	7	7			+0	+1
General Support	85	92	+7	+7.9%	+7	+9
Health Care Assistants	589	588	-1	-0.1%	+1	+27
Care, other	81	78	-2	-2.5%	-2	-1
Patient & Client Care	669	666	-3	-0.4%	-1	+27

Daughters of Charity, Dublin

Apr 2021 (Dec 2020 figure: 1,063)	WTE Mar 2021	WTE Apr 2021	WTE change since Mar 21	% change since Mar 21	WTE change since Dec 20	WTE change since Apr 20
Overall	1,075	1,069	-6	-0.6%	+5	-4
Consultants	2	2			-0	-0
Medical/ Dental, other	2	2				
Medical & Dental	4	4			-0	-0
Nurse/ Midwife Manager	63	62	-1	-1.6%		+0
Nurse/ Midwife Specialist & AN/MP	12	12			+1	+3
Staff Nurse/ Staff Midwife	186	185	-0	-0.2%	-3	-2
<i>Pre-registration Nurse/ Midwife Intern</i>	11	11			+3	+11
<i>Pre-registration Nurse Intern (COVID-19)</i>				-100.0%		-15
Nursing/ Midwifery Student	11	11			+1	-5
Nursing/ Midwifery other	4	4				
Nursing & Midwifery	275	274	-1	-0.5%	-1	-4
Therapy Professions	35	35			+3	+1
Social Care	183	183	+0	+0.0%	+10	+15
Social Workers	13	13			-0	+2
Psychologists	12	13	+1	+8.1%	+2	+4
Pharmacy	2	2				
H&SC, Other	4	3	-1	-25.4%	-2	-2
Health & Social Care Professionals	249	249	+0	+0.0%	+14	+21
Management (VIII & above)	9	9				+3
Administrative/ Supervisory (V to VII)	28	28	+0	+0.0%	+1	+1
Clerical (III & IV)	31	31			-1	-1
Management & Administrative	68	68			+0	+3
Support	77	77	-0	-0.0%	+1	-2
Maintenance/ Technical	7	7			-1	-1
General Support	84	84	-0	-0.0%	+0	-3
Health Care Assistants	365	362	-3	-0.9%	-5	-17
Care, other	30	29	-1	-4.6%	-3	-3
Patient & Client Care	395	390	-5	-1.2%	-8	-20

Apr 2021 (Dec 2020 figure: 549)	WTE Mar 2021	WTE Apr 2021	WTE change since Mar 21	% change since Mar 21	WTE change since Dec 20	WTE change since Apr 20
Overall	553	550	-3	-0.6%	+1	-18
Medical/ Dental, other	1	1				
Medical & Dental	1	1				
Nurse/ Midwife Manager	35	32	-3	-8.5%		-3
Nurse/ Midwife Specialist & AN/MP	5	5			-1	-2
Staff Nurse/ Staff Midwife	151	150	-0	-0.1%	-2	+8
Pre-registration Nurse/ Midwife Intern	8	8			-4	+8
Pre-registration Nurse Intern (COVID-19)				-100.0%		-23
Nursing/ Midwifery Student	8	8			+8	-15
Nursing/ Midwifery other	3	3				
Nursing & Midwifery	202	199	-3	-1.6%	+5	-12
Therapy Professions	15	14	-1	-6.7%	-2	-1
Social Care	68	67	-2	-2.3%	-0	+12
Social Workers	5	5	+0	+8.0%	+0	
Psychologists	6	6			-1	
H&SC, Other	6	6			+0	+0
Health & Social Care Professionals	100	98	-2	-2.2%	-3	+11
Management (VIII & above)	2	2				
Administrative/ Supervisory (V to VII)	11	11				
Clerical (III & IV)	14	14	+0	+1.5%	-0	-0
Management & Administrative	27	27	+0	+0.7%	-0	-0
Support	42	42			-1	-3
Maintenance/ Technical	4	4				
General Support	47	47			-1	-3
Health Care Assistants	154	156	+2	+1.0%	-1	-16
Care, other	23	23	+0	+1.9%	-0	+1
Patient & Client Care	177	179	+2	+1.1%	-1	-15

Daughters of Charity, Roscrea

Apr 2021 (Dec 2020 figure: 289)	WTE Mar 2021	WTE Apr 2021	WTE change since Mar 21	% change since Mar 21	WTE change since Dec 20	WTE change since Apr 20
Overall	291	292	+1	+0.4%	+3	+1
Nurse/ Midwife Manager	14	15	+1	+7.4%		
Staff Nurse/ Staff Midwife	19	19	-1	-2.8%	-0	+0
Nursing/ Midwifery other	1	1				
Nursing & Midwifery	34	34	+0	+1.4%	-0	+0
Therapy Professions	2	2				
Social Care	25	25			+0	+5
Social Workers	1	1				
Psychologists	1	1				
Health & Social Care Professionals	29	29			+0	+5
Management (VIII & above)	1	1				
Administrative/ Supervisory (V to VII)	7	7			-1	
Clerical (III & IV)	7	7			+1	+0
Management & Administrative	15	15			-0	+0
Support	4	4				
Maintenance/ Technical	5	5				-1
General Support	9	9				-1
Health Care Assistants	203	203	+1	+0.3%	+3	-1
Care, other	2	2				-3
Patient & Client Care	204	205	+1	+0.3%	+3	-4

Kare, Newbridge, Co Kildare

Apr 2021 (Dec 2020 figure: 377)	WTE Mar 2021	WTE Apr 2021	WTE change since Mar 21	% change since Mar 21	WTE change since Dec 20	WTE change since Apr 20
Overall	374	383	+9	+2.4%	+6	+21
Nurse/ Midwife Manager	8	8	+0	+1.0%	+1	-2
Staff Nurse/ Staff Midwife	24	24	+0	+1.0%	-1	+2
Nursing & Midwifery	32	33	+0	+1.0%	+0	-1
Therapy Professions	12	14	+1	+10.6%	+1	+0
Social Care	69	72	+3	+4.4%	+4	+10
Social Workers	4	4	+0	+12.3%	+0	+0
Psychologists	7	7	-0	-2.5%	-1	+1
Health & Social Care Professionals	92	96	+5	+5.0%	+4	+11
Management (VIII & above)	6	6				
Administrative/ Supervisory (V to VII)	12	11	-0	-3.6%	-2	-2
Clerical (III & IV)	13	14	+1	+6.6%	-0	+1
Management & Administrative	31	32	+0	+1.5%	-2	-1
Support	1	1			-0	-0
General Support	1	1			-0	-0
Health Care Assistants	102	107	+5	+5.0%	+2	+7
Care, other	116	114	-2	-1.3%	+2	+4
Patient & Client Care	218	221	+4	+1.6%	+4	+12

Apr 2021 (Dec 2020 figure: 320)	WTE Mar 2021	WTE Apr 2021	WTE change since Mar 21	% change since Mar 21	WTE change since Dec 20	WTE change since Apr 20
Overall	335	343	+8	+2.5%	+22	+43
Nurse/ Midwife Manager	18	17	-0	-0.3%	+1	+1
Staff Nurse/ Staff Midwife	29	29	-0	-1.5%	+0	-0
Nursing & Midwifery	47	46	-1	-1.1%	+1	+1
Social Care	104	107	+2	+2.4%	+2	+10
Social Workers	3	3				-0
Psychologists	1	1				
H&SC, Other	1	1				
Health & Social Care Professionals	109	112	+2	+2.3%	+2	+10
Management (VIII & above)	3	3				+2
Administrative/ Supervisory (V to VII)	5	5	-0	-9.4%	-0	-0
Clerical (III & IV)	11	12	+1	+6.8%	+1	+1
Management & Administrative	19	20	+0	+1.5%	+0	+3
Support	1	1	+0	+3.3%	-0	+0
Maintenance/ Technical	2	2				
General Support	3	3	+0	+1.2%	-0	+0
Health Care Assistants	128	134	+6	+4.8%	+20	+31
Care, other	28	28	-0	-0.5%	+0	-2
Patient & Client Care	156	162	+6	+3.8%	+20	+29

Apr 2021 (Dec 2020 figure: 284)	WTE Mar 2021	WTE Apr 2021	WTE change since Mar 21	% change since Mar 21	WTE change since Dec 20	WTE change since Apr 20
Overall	292	291	-1	-0.3%	+7	+20
Nurse/ Midwife Manager	9	9	-0	-0.4%	-0	-1
Staff Nurse/ Staff Midwife	4	4	+0	+1.6%	-0	-0
Nursing & Midwifery	13	13	+0	+0.2%	-1	-1
Therapy Professions	3	3				
Social Care	101	98	-3	-2.8%	-2	-2
Social Workers	4	4			+0	+1
Psychologists	2	2	+0	+1.0%	+0	+0
H&SC, Other	3	3			+1	+0
Health & Social Care Professionals	112	110	-3	-2.5%	-1	-1
Senior Management (VIII & GM)	1	1			+1	+1
Management (VIII & above)	1	1			+1	+1
Administrative/ Supervisory (V to VII)	4	4	-1	-11.7%		-1
Clerical (III & IV)	10	11	+1	+9.7%	+1	+1
Management & Administrative	16	16	+1	+3.2%	+2	+1
Support	1	1				
Maintenance/ Technical	3	3				
General Support	4	4				
Health Care Assistants	132	133	+1	+1.1%	+7	+22
Care, other	15	15	+0	+0.1%	-0	-2
Patient & Client Care	147	148	+1	+1.0%	+7	+21

Apr 2021 (Dec 2020 figure: 342)	WTE Mar 2021	WTE Apr 2021	WTE change since Mar 21	% change since Mar 21	WTE change since Dec 20	WTE change since Apr 20
Overall	343	341	-2	-0.7%	-1	-7
Nurse/ Midwife Manager	14	15	+0	+1.7%	+1	-2
Nurse/ Midwife Specialist & AN/MP	2	2	-0	-1.9%	-0	+0
Staff Nurse/ Staff Midwife	20	21	+1	+4.2%	-1	-2
Pre-registration Nurse/ Midwife Intern	6	5	-0	-8.5%	+5	-0
Pre-registration Nurse Intern (COVID-19)		0	+0	-100.0%	+0	-4
Nursing/ Midwifery Student	6	6	-0	-2.1%	+6	-4
Nursing/ Midwifery other	6	6	+0	+0.7%	-1	-1
Nursing & Midwifery	48	49	+1	+2.1%	+5	-9
Therapy Professions	8	7	-0	-6.0%	-1	-1
Social Care	95	95	-0	-0.0%	+0	+5
Social Workers	3	3				+0
Psychologists	2	2				-0
H&SC, Other	3	3				
Health & Social Care Professionals	109	109	-1	-0.5%	-1	+3
Management (VIII & above)	4	4				+1
Administrative/ Supervisory (V to VII)	12	12			-1	-2
Clerical (III & IV)	13	12	-1	-7.3%	-0	-2
Management & Administrative	29	28	-1	-3.3%	-1	-3
Support	13	13	-0	-1.4%	-1	-2
Maintenance/ Technical	4	4				-1
General Support	17	17	-0	-1.1%	-1	-3
Health Care Assistants	130	129	-1	-1.1%	-4	+4
Care, other	9	9	-0	-2.4%	+0	+1
Patient & Client Care	140	138	-2	-1.2%	-3	+4

Peamount Hospital (Newcastle)

Apr 2021 (Dec 2020 figure: 483)	WTE Mar 2021	WTE Apr 2021	WTE change since Mar 21	% change since Mar 21	WTE change since Dec 20	WTE change since Apr 20
Overall	475	475	-0	-0.0%	-7	-10
Registrars	2	2	-0	-2.4%	+0	-0
SHO/ Interns	8	8	+0	+1.1%	+1	+1
Medical & Dental	10	10	+0	+0.4%	+1	+1
Nurse/ Midwife Manager	33	32	-2	-4.6%	+4	+6
Nurse/ Midwife Specialist & AN/MP	2	2				+0
Staff Nurse/ Staff Midwife	73	74	+1	+1.5%	-1	-8
<i>Nursing Education/Clinical</i>	1	1			+1	+1
Nursing/ Midwifery other	1	1				+1
Nursing & Midwifery	109	109	-0	-0.4%	+3	-1
Therapy Professions	29	28	-1	-4.9%	-1	-5
Health Science/ Diagnostics	4	3	-1	-16.7%		
Social Care	3	3	+1	+21.3%	-1	-0
Social Workers	6	4	-3	-41.9%	-1	-1
Pharmacy	4	4	-0	-4.5%	+0	-0
Health & Social Care Professionals	46	41	-4	-9.3%	-3	-6
Management (VIII & above)	4	4				
Administrative/ Supervisory (V to VII)	18	17	-1	-3.0%	+1	+1
Clerical (III & IV)	20	20	+1	+2.6%	+1	+1
Management & Administrative	42	42	-0	-0.1%	+1	+2
Support	38	38	+0	+0.4%	-6	-9
Maintenance/ Technical	9	9				+1
General Support	47	47	+0	+0.3%	-6	-8
Health Care Assistants	221	225	+4	+1.9%	-1	+4
Care, other	1	1			-2	-2
Patient & Client Care	222	226	+4	+1.9%	-4	+3

Stewart's Hospital, (Palmerstown)

Apr 2021 (Dec 2020 figure: 914)	WTE Mar 2021	WTE Apr 2021	WTE change since Mar 21	% change since Mar 21	WTE change since Dec 20	WTE change since Apr 20
Overall	921	926	+5	+0.5%	+12	+63
Consultants	0	0				
Medical & Dental	0	0				
Nurse/ Midwife Manager	33	32	-1	-3.0%	+1	-1
Staff Nurse/ Staff Midwife	82	82			+1	+9
Pre-registration Nurse/ Midwife Intern	8	8			+8	+7
Pre-registration Nurse Intern (COVID-19)				-100.0%		-7
Nursing/ Midwifery Student	8	8			+8	
Nursing/ Midwifery other	2	2			+1	+1
Nursing & Midwifery	124	123	-1	-0.8%	+10	+10
Therapy Professions	19	17	-2	-10.8%	-3	+1
Social Care	12	12			-1	-2
Social Workers	6	6				-1
Psychologists	4	4				-1
Health & Social Care Professionals	40	38	-2	-5.0%	-4	-2
Management (VIII & above)	18	17	-1	-5.6%	+1	+6
Administrative/ Supervisory (V to VII)	18	18	+0	+2.3%	+2	+2
Clerical (III & IV)	24	24				+2
Management & Administrative	60	60	-1	-1.0%	+3	+10
Support	53	53	-0	-0.0%	-1	-5
Maintenance/ Technical	6	6				+1
General Support	59	59	+0	+0.0%	-1	-4
Health Care Assistants	515	524	+8	+1.6%	+4	+41
Care, other	123	122	-0	-0.2%	+0	+7
Patient & Client Care	638	646	+8	+1.3%	+4	+48

Apr 2021 (Dec 2020 figure: 648)	WTE Mar 2021	WTE Apr 2021	WTE change since Mar 21	% change since Mar 21	WTE change since Dec 20	WTE change since Apr 20
Overall	646	657	+10	+1.6%	+8	+15
Registrars	1	1				
Medical & Dental	1	1				
Nurse/ Midwife Manager	45	43	-2	-4.4%	-4	-2
Nurse/ Midwife Specialist & AN/MP	3	3			-0	-1
Staff Nurse/ Staff Midwife	166	166	+0	+0.1%	+13	+19
<i>Pre-registration Nurse/ Midwife Intern</i>				-100.0%		-6
<i>Pre-registration Nurse Intern (COVID-19)</i>				-100.0%		-4
Nursing/ Midwifery Student				-100.0%	-4	-11
<i>Nursing Education/Clinical</i>	1	1			+1	+1
Nursing/ Midwifery other	1	1			+1	+1
Nursing & Midwifery	214	212	-2	-0.9%	+6	+7
Therapy Professions	3	3				+1
Social Care	71	75	+5	+6.5%	-0	-0
Social Workers	2	2				
Psychologists	1	1				
Health & Social Care Professionals	77	81	+5	+6.0%	-0	+1
Management (VIII & above)	1	2	+1	+100.0%	+1	+1
Administrative/ Supervisory (V to VII)	6	6			+0	+0
Clerical (III & IV)	12	11	-0	-2.2%	-0	-1
Management & Administrative	18	19	+1	+4.0%	+1	+1
Support	20	19	-0	-1.5%	+0	-3
Maintenance/ Technical	2	3	+1	+52.9%	+0	+0
General Support	22	22	+1	+3.3%	+0	-3
Health Care Assistants	282	286	+5	+1.7%	-1	+11
Care, other	33	34	+1	+3.9%	+2	-2
Patient & Client Care	315	321	+6	+1.9%	+1	+10

St. John of God (IDS)

Apr 2021 (Dec 2020 figure: 468)	WTE Mar 2021	WTE Apr 2021	WTE change since Mar 21	% change since Mar 21	WTE change since Dec 20	WTE change since Apr 20
Overall	458	459	+1	+0.2%	-9	+10
Medical & Dental	1	1				
Nurse/ Midwife Manager	9	8	-1	-10.0%		
Staff Nurse/ Staff Midwife	51	51	+0	+0.8%	+2	+6
Nursing & Midwifery	60	59	-0	-0.8%	+2	+6
Therapy Professions	13	11	-2	-13.1%	-2	+1
Social Care	154	156	+2	+1.2%	-3	+4
Social Workers	3	3				+1
Psychologists	7	7	-0	-0.1%	+1	+1
Health & Social Care Professionals	178	178	+0	+0.0%	-4	+7
Management (VIII & above)	14	14	-0	-1.7%	-0	-1
Administrative/ Supervisory (V to VII)	27	28	+1	+5.3%	+2	+1
Clerical (III & IV)	18	18	+0	+0.4%	-0	+1
Management & Administrative	60	61	+1	+2.1%	+1	+1
Support	12	12	+0	+1.0%	-0	+0
Maintenance/ Technical	5	5				
General Support	17	17	+0	+0.7%	-0	+0
Health Care Assistants	19	19	-0	-0.5%	+1	+3
Care, other	125	125	-0	-0.2%	-8	-6
Patient & Client Care	144	144	-0	-0.2%	-8	-3

St. John of God, Kerry

Apr 2021 (Dec 2020 figure: 320)	WTE Mar 2021	WTE Apr 2021	WTE change since Mar 21	% change since Mar 21	WTE change since Dec 20	WTE change since Apr 20
Overall	326	330	+3	+1.0%	+10	+21
Nurse/ Midwife Manager	15	15	-1	-3.4%	-0	+0
Staff Nurse/ Staff Midwife	48	48	-0	-0.3%	+1	+3
Nursing & Midwifery	64	63	-1	-1.0%	+1	+3
Therapy Professions	4	4	-0	-1.0%	+0	+1
Social Care	46	46	+0	+1.0%	+0	-1
Social Workers	1	1				
Psychologists	1	1	+0	+35.9%	+1	+1
Health & Social Care Professionals	52	53	+1	+1.5%	+1	+1
Management (VIII & above)	1	1				
Administrative/ Supervisory (V to VII)	6	7	+0	+5.2%	-1	-1
Clerical (III & IV)	9	9	+0	+1.5%	+1	-1
Management & Administrative	17	17	+0	+2.8%	-0	-2
General Support	30	30	+0	+0.2%	+0	+0
Health Care Assistants	117	119	+3	+2.2%	+6	+12
Care, other	48	48	+0	+0.3%	+2	+7
Patient & Client Care	165	167	+3	+1.7%	+8	+18

St. John of God Liffey Services

Apr 2021 (Dec 2020 figure: 801)	WTE Mar 2021	WTE Apr 2021	WTE change since Mar 21	% change since Mar 21	WTE change since Dec 20	WTE change since Apr 20
Overall	778	776	-3	-0.3%	-25	+22
Registrars	1	1				
Medical & Dental	1	1				
Nurse/ Midwife Manager	20	20	-0	-0.5%	-2	-4
Nurse/ Midwife Specialist & AN/MP	1	1				
Staff Nurse/ Staff Midwife	92	91	-1	-0.5%	+1	+6
Nursing & Midwifery	113	112	-1	-0.5%	-1	+3
Therapy Professions	11	12	+1	+12.8%	-1	-3
Social Care	264	262	-2	-0.7%	-7	+18
Social Workers	6	6	+0	+0.5%	-0	-2
Psychologists	6	5	-1	-12.0%	-1	-1
Health & Social Care Professionals	287	286	-1	-0.4%	-9	+12
Management (VIII & above)	5	5	-0	-4.2%	+0	-1
Administrative/ Supervisory (V to VII)	10	10	+1	+6.2%	-1	-1
Clerical (III & IV)	19	19	-0	-0.5%	+1	+0
Management & Administrative	34	34	+0	+0.8%	-0	-1
Support	29	26	-4	-12.4%	-3	-5
Maintenance/ Technical	14	14	+0	+0.6%	-0	-0
General Support	43	40	-4	-8.2%	-3	-6
Health Care Assistants	160	165	+5	+3.2%	-0	+13
Care, other	140	138	-3	-1.8%	-11	+1
Patient & Client Care	301	303	+3	+0.8%	-11	+14

Apr 2021 (Dec 2020 figure: 1,453)	WTE Mar 2021	WTE Apr 2021	WTE change since Mar 21	% change since Mar 21	WTE change since Dec 20	WTE change since Apr 20
Overall	1,426	1,445	+19	+1.3%	-8	+31
Consultants	5	5			-1	-1
Registrars	1	1				-2
Medical/ Dental, other	4	4				-0
Medical & Dental	10	10			-1	-3
Nurse/ Midwife Manager	86	86	+1	+0.7%	-1	-0
Staff Nurse/ Staff Midwife	166	166	-0	-0.2%	+0	+13
Nursing & Midwifery	251	252	+0	+0.1%	-1	+12
Therapy Professions	50	51	+1	+2.5%	+5	-2
Social Care	574	585	+10	+1.8%	+20	+52
Social Workers	20	20	-0	-2.1%	-2	-2
Psychologists	22	22	-0	-1.7%	-2	+0
H&SC, Other	9	9	-0	-0.9%	+0	-1
Health & Social Care Professionals	676	687	+11	+1.6%	+22	+48
Management (VIII & above)	21	21			+0	
Administrative/ Supervisory (V to VII)	50	49	-1	-2.2%	+3	+7
Clerical (III & IV)	47	47	-0	-0.1%	-7	-6
Management & Administrative	118	117	-1	-1.0%	-3	+1
Support	46	44	-2	-3.5%	-3	-51
Maintenance/ Technical	12	12	-0	-0.8%	-0	-0
General Support	58	56	-2	-2.9%	-3	-51
Health Care Assistants	291	302	+12	+4.0%	-19	+26
Care, other	22	22	-1	-3.3%	-2	-2
Patient & Client Care	313	324	+11	+3.5%	-22	+24

St. Patrick's, Kilkenny

Apr 2021 (Dec 2020 figure: 287)	WTE Mar 2021	WTE Apr 2021	WTE change since Mar 21	% change since Mar 21	WTE change since Dec 20	WTE change since Apr 20
Overall	284	280	-4	-1.3%	-7	-7
Nurse/ Midwife Manager	12	12	+0	+0.5%	+0	-0
Staff Nurse/ Staff Midwife	25	25	-0	-1.0%	-2	-0
Pre-registration Nurse/ Midwife Intern	1	1			+1	+1
Nursing/ Midwifery Student	1	1			+1	+1
Nursing & Midwifery	38	38	-0	-0.5%	-1	+0
Social Care	28	27	-2	-6.4%	-2	-2
Social Workers	1	1			-0	+0
H&SC, Other	2	2			-0	-1
Health & Social Care Professionals	31	29	-2	-5.8%	-2	-3
Executive Management	1	1			+1	
Management (VIII & above)	1	1				
Administrative/ Supervisory (V to VII)	6	6	-0	-0.3%	+0	+0
Clerical (III & IV)	12	12	-1	-6.4%	-0	-1
Management & Administrative	20	19	-1	-4.1%	-0	-1
Support	1	1			-1	-2
Maintenance/ Technical	2	2			-1	-1
General Support	3	3			-2	-3
Patient & Client Care	192	191	-1	-0.5%	-2	-0

Sunbeam House Services

Apr 2021 (Dec 2020 figure: 450)	WTE Mar 2021	WTE Apr 2021	WTE change since Mar 21	% change since Mar 21	WTE change since Dec 20	WTE change since Apr 20
Overall	451	468	+17	+3.9%	+19	+46
Nurse/ Midwife Manager	4	5	+1	+25.0%	+1	+2
Staff Nurse/ Staff Midwife	32	32	-0	-0.4%	-1	-1
Nursing & Midwifery	36	37	+1	+2.4%	+0	+1
Therapy Professions	4	3	-1	-14.0%	+1	+1
Social Care	197	203	+6	+3.0%	+8	+45
Social Workers	3	3			+1	+2
Psychologists				-100.0%		-2
H&SC, Other				-100.0%		-1
Health & Social Care Professionals	204	210	+5	+2.6%	+10	+45
Management (VIII & above)	9	9				+1
Administrative/ Supervisory (V to VII)	9	9	-0	-0.1%	-0	-1
Clerical (III & IV)	28	27	-1	-3.0%	+2	-4
Management & Administrative	45	45	-1	-1.8%	+2	-4
Support	4	4	-0	-4.3%	-4	-18
Maintenance/ Technical		1	+1	-100.0%	+1	-2
General Support	4	5	+1	+18.2%	-3	-20
Health Care Assistants	70	76	+6	+8.7%	+10	+20
Care, other	91	97	+5	+5.6%	-2	+3
Patient & Client Care	161	172	+11	+7.0%	+8	+23

Bros. of Charity, West Region

Apr 2021 (Dec 2020 figure: 1,298)	WTE Mar 2021	WTE Apr 2021	WTE change since Mar 21	% change since Mar 21	WTE change since Dec 20	WTE change since Apr 20
Overall	1,292	1,297	+6	+0.4%	-0	+64
Consultants	2	2				-0
Registrars	2	2	-0	-2.5%	-0	-0
Medical & Dental	4	4	-0	-1.1%	-0	-0
Nurse/ Midwife Manager	70	70	+0	+0.4%	+2	+3
Nurse/ Midwife Specialist & AN/MP	5	5	+0	+1.3%	+0	+0
Staff Nurse/ Staff Midwife	123	119	-3	-2.5%	-4	-1
<i>Pre-registration Nurse Intern (COVID-19)</i>				-100.0%		
Nursing/ Midwifery Student				-100.0%	-1	
Nursing & Midwifery	197	194	-3	-1.4%	-3	+2
Therapy Professions	30	29	-0	-1.1%	+0	-2
Social Care	215	220	+5	+2.1%	+9	+16
Social Workers	27	27	+0	+0.4%	+1	+1
Psychologists	13	13	-0	-0.1%	+1	-1
H&SC, Other	10	11	+1	+7.8%	-0	-3
Health & Social Care Professionals	295	301	+5	+1.8%	+11	+12
Management (VIII & above)	13	13			+0	+0
Administrative/ Supervisory (V to VII)	36	36	+0	+0.5%	-0	+1
Clerical (III & IV)	37	36	-1	-2.5%	-1	+1
Management & Administrative	86	85	-1	-0.8%	-2	+2
Support	41	42	+1	+2.3%	-1	+3
Maintenance/ Technical	5	5				
General Support	46	47	+1	+2.1%	-1	+3
Health Care Assistants	543	548	+6	+1.0%	+0	+43
Care, other	120	118	-3	-2.3%	-5	+2
Patient & Client Care	663	666	+3	+0.4%	-5	+45

Social Care Disability Services Employment by Grade Group: Apr 2021

Apr 2021 (Dec 2020 figure: 18,944)	WTE Mar 2021	WTE Apr 2021	WTE change since Mar 21	% change since Mar 21	WTE change since Dec 20	WTE change since Apr 20
Overall	19,039	19,114	+75	+0.4%	+169	+855
Consultant Paediatrics	3	3				
Consultant Psychiatry	19	19	-0	-0.6%	-3	-2
Consultants	22	22	-0	-0.5%	-3	-2
Registrar	6	5	-1	-12.6%	+2	-0
Senior Registrar	2	2			-1	
Specialist Registrar	2	3	+1	+30.6%	+1	-0
Registrars	10	10	-0	-1.0%	+2	-1
SHO/ Interns	8	8	+0	+1.1%	-1	+0
Medical/ Dental, other	14	14				-0
Medical & Dental	54	54	-0	-0.2%	-2	-3
Clinical Nurse/ Midwife Manager	827	819	-7	-0.9%	+5	+7
Director Nursing/Midwifery, Assistant	45	47	+2	+5.4%	+1	+6
Director of Nursing/Midwifery	36	35	-1	-3.5%	-2	-1
Nurse/ Midwife Manager	907	901	-6	-0.7%	+4	+12
Advanced Nurse/ Midwife Practitioner	8	8				+6
Clinical Nurse/ Midwife Specialist	57	58	+1	+0.9%	+2	-2
Nurse/ Midwife Specialist & AN/MP	65	66	+1	+0.8%	+2	+4
Staff Nurse [Intellectual Disability]	1,666	1,754	+89	+5.3%	-34	+170
Staff Nurse [Psychiatric]	203	203	+1	+0.3%	+151	+146
Staff Nurses [General/ Children's]	737	638	-99	-13.4%	-114	-256
Staff Nurse/ Staff Midwife	2,606	2,596	-10	-0.4%	+3	+60
Public Health Nurse	10	11	+1	+10.7%	+4	+5
Pre-registration Nurse/ Midwife Intern	81	81	+1	+0.7%	+79	+29
Pre-registration Nurse Intern (COVID-19)		0	+0	-100.0%	-31	-62
Nursing/ Midwifery awaiting registration	13	13				-2
Nursing/ Midwifery Student	94	95	+1	+1.0%	+47	-35
Nursing Education/Clinical	24	24	+0	+0.4%	+1	-1
Other Nursing/ Midwifery	2	2			+1	+1
Nursing/ Midwifery other	26	26	+0	+0.3%	+2	+0
Nursing & Midwifery	3,708	3,694	-13	-0.4%	+62	+46
Dietitians	18	16	-2	-9.0%	-0	-2
Occupational Therapists	291	287	-4	-1.4%	+9	+21
Physiotherapists	192	188	-3	-1.7%	-5	-4
Speech & Language Therapists	302	306	+4	+1.3%	-2	+13
Therapy Professions	802	798	-5	-0.6%	+2	+28
Clinical Engineering	14	14			+1	+2
Clinical Measurement	3	2	-1	-23.1%		+1
Medical Science	4	4				
Phlebotomists				-100.0%		-1
Radiographers	1	1				
Health Science/ Diagnostics	22	21	-1	-2.8%	+1	+2
Social Care	2,802	2,824	+22	+0.8%	+35	+228
Social Workers	232	229	-3	-1.2%	+1	+4
Psychologists	232	234	+2	+0.8%	+5	+20
Pharmacy	6	6	-0	-2.8%	+0	-0
Counsellor Therapists	21	21	-0	-0.7%	+1	+1
Other Health & Social Care	43	42	-2	-3.7%	-3	-7
Play Therapists/ Specialists	11	11	-0	-1.5%	-0	-1

Apr 2021 (Dec 2020 figure: 18,944)	WTE Mar 2021	WTE Apr 2021	WTE change since Mar 21	% change since Mar 21	WTE change since Dec 20	WTE change since Apr 20
Overall	19,039	19,114	+75	+0.4%	+169	+855
H&SC, Other	75	73	-2	-2.5%	-2	-6
Health & Social Care Professionals	4,172	4,186	+13	+0.3%	+42	+275
Executive Management	39	39	-0	-1.2%	+3	+10
Senior Management (VIII & GM)	176	175	-1	-0.4%	+7	+19
Management (VIII & above)	215	213	-1	-0.5%	+10	+29
Middle Management (V-VII)	534	537	+3	+0.5%	+26	+51
Other Administrative	14	14			-2	-1
Administrative/ Supervisory (V to VII)	548	551	+3	+0.5%	+24	+50
Clerical (III & IV)	695	693	-2	-0.3%	+8	+16
Management & Administrative	1,458	1,457	-1	-0.1%	+41	+95
Catering	92	90	-2	-1.8%	-6	-13
Household Services	401	398	-3	-0.7%	-8	-25
Other Labs & Associated	1	1	+0	+8.7%	+0	+0
Other Support	136	143	+7	+5.1%	+7	-39
Portering	18	18			-6	-10
Support	648	650	+2	+0.4%	-12	-86
Maintenance	119	120	+1	+1.0%	-1	-0
Technical Services	11	11				+3
Maintenance/ Technical	130	131	+1	+0.9%	-1	+3
General Support	778	782	+4	+0.5%	-14	-84
HCA, Nurse's Aide, etc.	7,068	7,140	+72	+1.0%	+49	+434
Health & Social Care Assistants	13	12	-1	-6.8%	+1	+1
Health Care Assistants	7,081	7,152	+72	+1.0%	+50	+435
Home Help	90	91	+1	+1.1%	-2	-9
Care, other	1,698	1,698	-0	-0.0%	-8	+99
Patient & Client Care	8,869	8,942	+72	+0.8%	+40	+525

Employment by WTE, Headcount, Gender, Full-Time /Part-Time etc.: Apr 2021

Social Care Disability Services Staff Group	WTE	Headcount	WTE: no.	% Male	% female	Male WTE: no.	Female WTE: no.	% Total Perm	% Male Perm	% Female Perm	% Total Full Time	% Total Part Time	% Male FT	% Female FT
Overall	19,114	22,682	1.19	19.2%	80.8%	1.12	1.20	87.7%	86.8%	87.9%	58.0%	42.0%	69.0%	55.4%
Consultant Paediatrics	3	6	1.97	16.7%	83.3%	1.82	2.00	66.7%	66.7%	80.0%	33.3%	66.7%	100.0%	20.0%
Consultant Psychiatry	19	25	1.35	28.0%	72.0%	1.33	1.36	84.0%	84.0%	83.3%	56.0%	44.0%	71.4%	50.0%
Consultants	22	31	1.44	25.8%	74.2%	1.37	1.46	80.6%	75.0%	82.6%	51.6%	48.4%	75.0%	43.5%
Registrar	5	6	1.18	16.7%	83.3%	1.00	1.23	0.0%	0.0%	0.0%	83.3%	16.7%	100.0%	80.0%
Senior Registrar	2	2	1.00		100.0%		1.00	0.0%	0.0%	0.0%	100.0%	0.0%		100.0%
Specialist Registrar	3	3	1.12	33.3%	66.7%	1.00	1.18	0.0%	0.0%	0.0%	100.0%	0.0%	100.0%	100.0%
Registrars	10	11	1.13	18.2%	81.8%	1.00	1.16	0.0%	0.0%	0.0%	90.9%	9.1%	100.0%	88.9%
SHO/ Interns	8	12	1.49	25.0%	75.0%	1.83	1.41	0.0%	0.0%	0.0%	100.0%	0.0%	100.0%	100.0%
Medical/ Dental, other	14	22	1.54	45.5%	54.5%	1.28	1.84	90.9%	80.0%	100.0%	40.9%	59.1%	50.0%	33.3%
Medical & Dental	54	76	1.42	30.3%	69.7%	1.33	1.45	59.2%	60.9%	58.5%	61.8%	38.2%	69.6%	58.5%
Clinical Nurse/ Midwife Manager	819	889	1.08	12.8%	87.2%	1.04	1.09	92.4%	92.4%	92.9%	81.6%	18.4%	98.2%	79.1%
Director Nursing/Midwifery, Assistant	47	48	1.02	14.6%	85.4%	1.01	1.02	97.9%	97.9%	97.6%	95.8%	4.2%	100.0%	95.1%
Director of Nursing/Midwifery	35	37	1.07	8.1%	91.9%	1.02	1.07	97.3%	97.3%	97.1%	97.3%	2.7%	100.0%	97.1%
Nurse/ Midwife Manager	901	974	1.08	12.7%	87.3%	1.04	1.09	92.8%	89.5%	93.3%	82.9%	17.1%	98.4%	80.6%
Advanced Nurse/ Midwife Practitioner	8	8	1.00	37.5%	62.5%	1.00	1.00	100.0%	100.0%	100.0%	100.0%	0.0%	100.0%	100.0%
Clinical Nurse/ Midwife Specialist	58	66	1.14	6.1%	93.9%	1.01	1.15	97.0%	97.0%	96.8%	56.1%	43.9%	100.0%	53.2%
Nurse/ Midwife Specialist & AN/MP	66	74	1.12	9.5%	90.5%	1.01	1.14	97.3%	100.0%	97.0%	60.8%	39.2%	100.0%	56.7%
Staff Nurse [Intellectual Disability]	1,754	2,042	1.16	8.5%	91.5%	1.10	1.17	95.2%	95.2%	95.0%	64.9%	35.1%	85.0%	63.0%
Staff Nurse [Psychiatric]	203	243	1.20	10.7%	89.3%	1.06	1.21	91.8%	91.8%	91.7%	65.8%	34.2%	80.8%	64.1%
Staff Nurses [General/ Children's]	638	769	1.20	13.7%	86.3%	1.09	1.22	90.1%	90.1%	89.9%	66.8%	33.2%	86.7%	63.7%
Staff Nurse/ Staff Midwife	2,596	3,054	1.18	10.0%	90.0%	1.09	1.19	93.6%	94.4%	93.5%	65.5%	34.5%	85.2%	63.3%
Public Health Nurse	11	12	1.09		100.0%	#DIV/0	1.09	100.0%		100.0%	75.0%	25.0%	#DIV/0	75.0%
Nursing/ Midwifery Student	95	180	1.90	5.0%	95.0%	2.11	1.89	20.6%	0.0%	21.6%	70.6%	29.4%	88.9%	69.6%
Nursing Education/Clinical	24	27	1.12		100.0%		1.12	96.3%	96.3%	96.3%	74.1%	25.9%		74.1%
Other Nursing/ Midwifery	2	2	1.00	50.0%	50.0%	1.00	1.00	100.0%	100.0%	100.0%	100.0%	0.0%	100.0%	100.0%
Nursing/ Midwifery other	26	29	1.11	3.4%	96.6%	1.00	1.12	96.6%	100.0%	96.4%	75.9%	24.1%	100.0%	75.0%
Nursing & Midwifery	3,694	4,323	1.17	10.3%	89.7%	1.09	1.18	90.5%	91.2%	90.4%	69.6%	30.4%	89.2%	67.4%

Dietitians	16	21	1.30		100.0%		1.30	90.5%	90.5%	90.5%	61.9%	38.1%		61.9%
Occupational Therapists	287	328	1.14	7.3%	92.7%	1.12	1.14	92.1%	92.1%	91.8%	76.8%	23.2%	83.3%	76.3%
Physiotherapists	188	222	1.18	15.8%	84.2%	1.02	1.21	91.9%	91.9%	91.4%	64.9%	35.1%	94.3%	59.4%
Speech & Language Therapists	306	355	1.16	1.7%	98.3%	1.00	1.16	93.5%	93.5%	93.7%	73.8%	26.2%	100.0%	73.4%
Therapy Professions	798	926	1.16	7.0%	93.0%	1.05	1.17	92.5%	93.8%	92.5%	72.5%	27.5%	90.8%	71.1%
Clinical Engineering	14	14	1.00	92.9%	7.1%	1.00	1.00	92.9%	92.9%	100.0%	92.9%	7.1%	92.3%	100.0%
Clinical Measurement	2	2	1.00	100.0%		1.00		100.0%	100.0%		100.0%	0.0%	100.0%	
Medical Science	4	4	1.00	75.0%	25.0%	1.00	1.00	75.0%	75.0%	100.0%	100.0%	0.0%	100.0%	100.0%
Radiographers	1	1	1.00		100.0%		1.00	100.0%	100.0%	100.0%	100.0%	0.0%		100.0%
Health Science/ Diagnostics	21	21	1.00	85.7%	14.3%	1.00	1.00	90.5%	88.9%	100.0%	95.2%	4.8%	94.4%	100.0%
Social Care	2,824	3,321	1.18	16.4%	83.6%	1.11	1.19	89.8%	91.2%	89.6%	49.5%	50.5%	64.2%	46.6%
Social Workers	229	271	1.18	17.7%	82.3%	1.10	1.20	92.6%	89.6%	93.3%	68.6%	31.4%	81.3%	65.9%
Psychologists	234	267	1.14	21.3%	78.7%	1.09	1.15	94.0%	94.7%	93.8%	73.4%	26.6%	82.5%	71.0%
Pharmacy	6	8	1.29	12.5%	87.5%	2.63	1.20	100.0%	100.0%	100.0%	75.0%	25.0%	0.0%	85.7%
Counsellor Therapists	21	25	1.19	8.0%	92.0%	1.00	1.21	96.0%	96.0%	95.7%	56.0%	44.0%	100.0%	52.2%
Other Health & Social Care	42	58	1.39	17.2%	82.8%	1.21	1.44	87.9%	87.9%	89.6%	43.1%	56.9%	70.0%	37.5%
Play Therapists/ Specialists	11	14	1.30	21.4%	78.6%	1.00	1.42	100.0%	100.0%	100.0%	42.9%	57.1%	100.0%	27.3%
H&SC, Other	73	97	1.32	15.5%	84.5%	1.13	1.37	91.8%	86.7%	92.7%	46.4%	53.6%	80.0%	40.2%
Health & Social Care	4,186	4,911	1.17	15.2%	84.8%	1.10	1.19	90.8%	91.4%	90.7%	56.3%	43.7%	69.9%	53.9%
Executive Management	39	39	1.01	35.9%	64.1%	1.00	1.02	89.7%	89.7%	92.0%	100.0%	0.0%	100.0%	100.0%
Senior Management (VIII & GM)	175	178	1.02	31.5%	68.5%	1.00	1.03	94.9%	94.9%	95.9%	96.1%	3.9%	100.0%	94.3%
Management (VIII & above)	213	217	1.02	32.3%	67.7%	1.00	1.02	94.0%	91.4%	95.2%	96.8%	3.2%	100.0%	95.2%
Middle Management (V-VII)	537	580	1.08	22.1%	77.9%	1.05	1.09	92.8%	92.8%	93.1%	78.3%	21.7%	83.6%	76.8%
Other Administrative	14	14	1.00	21.4%	78.6%	1.00	1.00	100.0%	100.0%	100.0%	100.0%	0.0%	100.0%	100.0%
Administrative/ Supervisory (V to VII)	551	594	1.08	22.1%	77.9%	1.05	1.09	92.9%	91.6%	93.3%	78.8%	21.2%	84.0%	77.3%
Clerical (III & IV)	693	838	1.21	9.7%	90.3%	1.11	1.22	89.1%	82.7%	89.8%	59.2%	40.8%	76.5%	57.3%
Management & Administrative	1,457	1,649	1.13	17.1%	82.9%	1.05	1.15	91.1%	89.0%	91.6%	71.2%	28.8%	85.8%	68.2%
Catering	90	109	1.21	29.4%	70.6%	1.11	1.25	99.1%	99.1%	100.0%	60.6%	39.4%	84.4%	50.6%
Household Services	398	569	1.43	16.5%	83.5%	1.43	1.43	89.3%	89.3%	91.8%	36.7%	63.3%	57.4%	32.6%
Other Labs & Associated	1	2	1.77	50.0%	50.0%	7.69	1.00	50.0%	50.0%	100.0%	50.0%	50.0%	0.0%	100.0%
Other Support	143	225	1.58	52.0%	48.0%	1.33	1.97	93.3%	93.3%	100.0%	27.6%	72.4%	45.3%	8.3%
Portering	18	25	1.36	96.0%	4.0%	1.37	1.25	88.0%	88.0%	100.0%	44.0%	56.0%	45.8%	0.0%
Support	650	930	1.43	28.8%	71.2%	1.34	1.47	91.3%	84.3%	94.1%	37.5%	62.5%	54.1%	30.8%
Maintenance	120	133	1.11	93.2%	6.8%	1.09	1.34	94.0%	94.0%	100.0%	76.7%	23.3%	80.6%	22.2%
Technical Services	11	11	0.99	72.7%	27.3%	0.99	1.00	90.9%	90.9%	100.0%	100.0%	0.0%	100.0%	100.0%

Maintenance/ Technical	131	144	1.10	91.7%	8.3%	1.09	1.23	93.8%	93.2%	100.0%	78.5%	21.5%	81.8%	41.7%
General Support	782	1,074	1.37	37.2%	62.8%	1.24	1.47	91.6%	87.3%	94.2%	43.0%	57.0%	63.2%	31.0%
HCA, Nurse's Aide, etc.	7,140	8,391	1.18	23.2%	76.8%	1.11	1.20	84.1%	84.1%	84.2%	53.0%	47.0%	63.0%	50.0%
Health & Social Care Assistants	12	15	1.25	20.0%	80.0%	1.07	1.31	80.0%	80.0%	91.7%	53.3%	46.7%	100.0%	41.7%
Health Care Assistants	7,152	8,406	1.18	23.2%	76.8%	1.11	1.20	84.1%	83.8%	84.2%	53.0%	47.0%	63.1%	50.0%
Home Help	91	251	2.75	8.4%	91.6%	4.05	2.67	53.8%	52.4%	53.9%	3.6%	96.4%	0.0%	3.9%
Care, other	1,698	1,992	1.17	24.8%	75.2%	1.15	1.18	89.2%	88.7%	89.3%	62.0%	38.0%	70.9%	59.1%
Patient & Client Care	8,942	10,649	1.19	23.2%	76.8%	1.12	1.21	84.3%	84.5%	84.3%	53.5%	46.5%	64.1%	50.4%

Employment by WTE, Headcount, Gender, Full-Time /Part-Time etc.: Apr 2021

Social Care Disability Services CHO	WTE	Headcount	WTE: no.	% Male	% female	Male WTE: no.	Female WTE: no.	% Total Perm	% Male Perm	% Female Perm	% Total Full Time	% Total Part Time	% Male FT	% Female FT
Overall	19,114	22,682	1.19	19.2%	80.8%	1.12	1.20	87.7%	86.8%	87.9%	58.0%	42.0%	69.0%	55.4%
CHO 1	1,591	1,793	1.13	20.6%	79.4%	1.07	1.14	88.2%	88.2%	88.3%	77.9%	22.1%	89.4%	74.9%
HSE	219	243	1.11	24.7%	75.3%	1.05	1.13	85.2%	85.2%	85.8%	73.3%	26.7%	90.0%	90.0%
Section 38	1,297	1,636	1.26	23.6%	76.4%	1.25	1.27	81.5%	81.5%	81.4%	39.7%	60.3%	42.7%	42.7%
CHO 2	1,516	1,879	1.24	23.7%	76.3%	1.22	1.25	82.0%	82.0%	81.9%	44.0%	56.0%	49.1%	42.4%
HSE	141	158	1.12	19.6%	80.4%	1.00	1.15	85.4%	85.4%	89.8%	73.4%	26.6%	93.5%	93.5%
Section 38	1,798	2,136	1.19	12.0%	88.0%	1.15	1.19	84.3%	84.3%	84.5%	38.1%	61.9%	39.5%	39.5%
CHO 3	1,939	2,294	1.18	12.5%	87.5%	1.13	1.19	84.4%	84.4%	84.9%	40.5%	59.5%	45.3%	39.9%
HSE	325	349	1.08	30.7%	69.3%	1.04	1.09	78.5%	78.5%	77.3%	87.1%	12.9%	97.2%	97.2%
Section 38	2,257	2,750	1.22	19.2%	80.8%	1.15	1.24	85.2%	85.2%	86.6%	63.4%	36.6%	68.2%	68.2%
CHO 4	2,582	3,099	1.20	20.5%	79.5%	1.13	1.22	84.5%	84.5%	85.7%	66.1%	33.9%	73.1%	64.3%
HSE	440	533	1.21	12.2%	87.8%	1.06	1.24	91.9%	91.9%	92.3%	68.9%	31.1%	89.2%	89.2%
Section 38	1,173	1,376	1.17	20.9%	79.1%	1.11	1.19	82.1%	82.1%	81.5%	47.4%	52.6%	59.2%	59.2%
CHO 5	1,613	1,909	1.18	18.4%	81.6%	1.10	1.20	84.9%	84.9%	84.7%	53.4%	46.6%	64.8%	50.8%
HSE	242	267	1.10	18.4%	81.6%	1.02	1.13	92.5%	92.5%	95.0%	80.9%	19.1%	98.0%	98.0%
Section 38	983	1,170	1.19	22.6%	77.4%	1.16	1.20	92.7%	92.7%	92.7%	63.8%	36.2%	74.7%	74.7%
CHO 6	1,225	1,437	1.17	21.9%	78.1%	1.13	1.18	92.7%	92.7%	93.1%	66.9%	33.1%	78.3%	63.8%
HSE	130	211	1.62	13.7%	86.3%	1.90	1.59	77.7%	77.7%	78.6%	51.2%	48.8%	41.4%	41.4%
Section 38	2,956	3,463	1.17	23.3%	76.7%	1.09	1.20	89.4%	89.4%	89.5%	67.9%	32.1%	80.8%	80.8%
CHO 7	3,086	3,674	1.19	22.7%	77.3%	1.11	1.22	88.7%	88.7%	88.8%	67.0%	33.0%	79.4%	63.3%
HSE	614	718	1.17	15.5%	84.5%	1.08	1.19	88.4%	88.4%	88.1%	67.4%	32.6%	84.7%	84.7%
Section 38	1,632	1,979	1.21	21.9%	78.1%	1.13	1.24	93.9%	93.9%	93.9%	42.1%	57.9%	49.3%	49.3%
CHO 8	2,245	2,697	1.20	20.2%	79.8%	1.12	1.22	92.5%	92.5%	92.3%	48.9%	51.1%	56.5%	46.9%
HSE	499	551	1.10	29.6%	70.4%	1.04	1.13	90.6%	90.6%	89.2%	87.1%	12.9%	95.1%	95.1%
Section 38	2,811	3,343	1.19	12.4%	87.6%	1.11	1.20	89.7%	89.7%	89.8%	51.3%	48.7%	64.2%	64.2%
CHO 9	3,310	3,894	1.18	14.9%	85.1%	1.09	1.19	89.8%	89.8%	89.7%	56.4%	43.6%	72.9%	53.5%
other Community Services	6	6	1.01	16.7%	83.3%	1.00	1.01	83.3%	83.3%	80.0%	83.3%	16.7%	100.0%	80.0%

Summary Staff Movement: April 2021

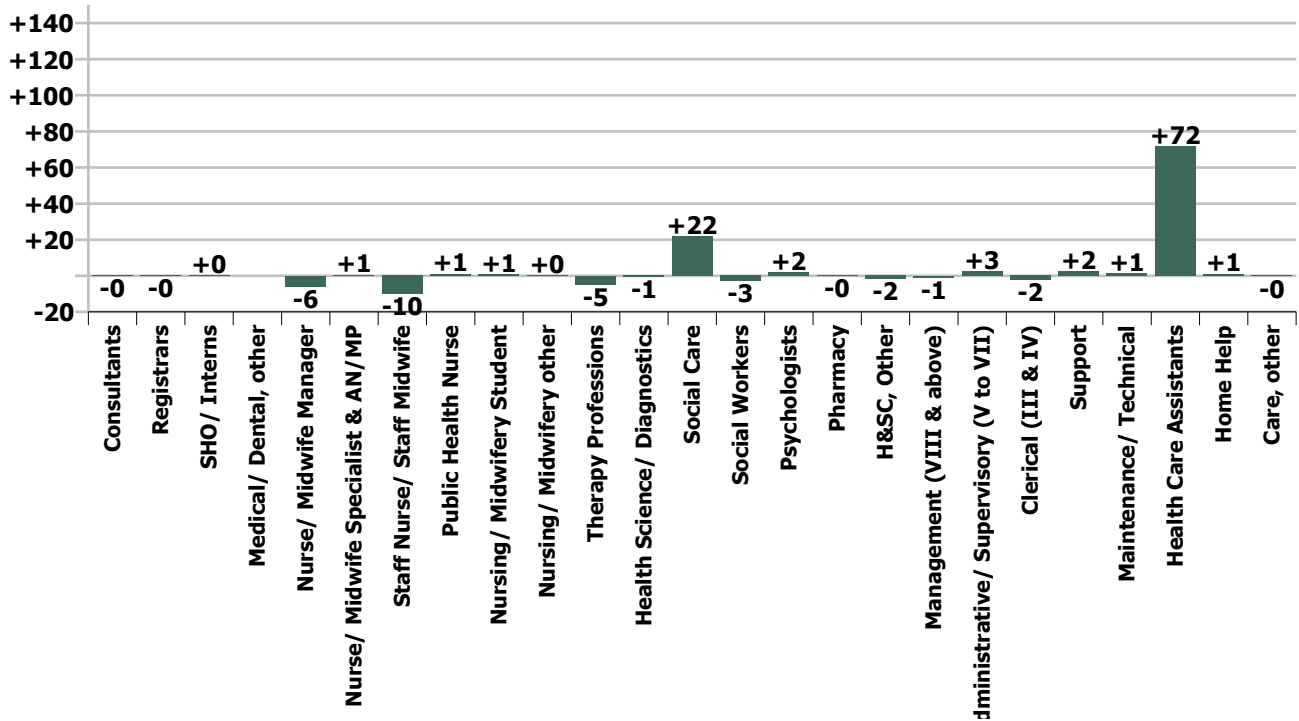
Month-on-month
Summary

WTE change since Mar 21	% change since Mar 21	overall	Consultants	Registrars	SHO/ Interns	Medical/ Dental, other	Medical & Dental	Nurse/ Midwife Manager	Nurse/ Midwife Specialist & AN/MP	Staff Nurse/ Staff Midwife	Public Health Nurse	Nursing/ Midwifery Student	Nursing/ Midwifery other	Nursing & Midwifery	Therapy Professions	Health Science/ Diagnostics	Social Care	Social Workers	Psychologists	Pharmacy	H&SC, Other	Health & Social Care Professionals	Management (VIII & above)	Administrative Supervisory (V to VII)	Clerical (III & IV)	Management & Administrative	Support	Maintenance/ Technical	General Support	Health Care Assistants	Home Help	Care, other	Patient & Client Care
Overall	+0.4%	+75	-0.1	-0.1	+0.1	0.0	-0.1	-5.9	+0.5	-10.1	+1.1	+0.9	+0.1	-13.4	-4.9	-0.6	+21.9	-2.9	+1.8	-0.2	-1.9	+13.2	-1.1	+2.6	-2.4	-0.9	+2.4	+1.2	+3.6	+71.5	+1.0	-0.3	+72.3
CHO 1	+1.1%	+17					0.0	-1.0		+4.6	+1.0	-0.0		+4.5	+2.5		-0.0	-0.5	+0.9		-1.1	+1.7	+0.6	+1.7	+2.3	-0.6		-0.6	+8.9	-0.6	+0.8	+9.0	
CHO 2	+0.4%	+6		-0.0			-0.0	+1.3	+0.1	-4.7				-3.3	-0.3		+3.9	+0.5	-0.0		+0.8	+4.9	-0.0	+1.2	-0.9	+0.2	+1.0		+1.0	+5.5		-1.9	+3.6
CHO 3	-0.6%	-11					0.0	-1.6		-2.6				-4.3	-2.9		-2.0	-0.4	+0.0		-0.2	-5.5		-0.5	+0.3	-0.2	+0.9	+0.9	+1.0		-3.0	-2.0	
CHO 4	-0.2%	-6					0.0	-2.3	+0.5	-6.2		+1.0		-7.0	-1.3		-1.4	-1.3	+0.5		-0.6	-4.0	+0.0	-1.8	+1.0	-0.7	+6.5	-0.0	+6.5	-1.9		+0.8	-1.1
CHO 5	+0.3%	+4	-0.1				-0.1	+0.6		+0.9	+0.1	+0.1	+0.0	+1.7	-1.6		-4.6	+0.1	+0.9		+0.2	-5.0	-0.5	+2.3	-3.1	-1.2	+0.1		+0.1	+7.1	+1.3	+0.6	+9.0
CHO 6	+1.3%	+16					0.0	+1.5		-1.9				-0.4	-1.0		+7.6		-0.1		-0.2	+6.3	-0.5	+1.3	-2.8	-2.0	-0.1	+1.0	+0.9	+5.1		+5.9	+10.9
CHO 7	+0.4%	+12		-0.1	+0.1		+0.0	-1.5		-1.3				-2.9	-2.4	-0.6	+3.7	-1.9	-1.3	-0.2		-2.6	-1.2	+0.4	+1.8	+0.9	-3.5	+0.1	-3.4	+24.1	+0.4	-4.4	+20.1
CHO 8	+1.1%	+25					0.0	-2.6	-0.0	+2.9		-0.1	+0.0	+0.3	+2.7		+4.2	+1.3	+0.6		+0.3	+9.1	+1.0	-0.0	-0.9	+0.0	-0.4	+1.0	+0.6	+13.2	-0.1	+1.6	+14.7
CHO 9	+0.4%	+12					0.0	-0.4		-1.7				-2.1	-0.6		+10.4	-0.8	+0.4		-1.1	+8.3	+0.1	-0.9	+0.6	-0.2	-1.4	-0.9	-2.3	+8.6		-0.6	+7.9
other Community Services																										0.0							
		+0.4%	-0.5%	-1.0%	+1.1%		-0.2%	-0.7%	+0.8%	-0.4%	+10.7%	+1.0%	+0.3%	-0.4%	-0.6%	-2.8%	+0.8%	-1.2%	+0.8%	-2.8%	-2.5%	+0.3%	-0.5%	+0.5%	-0.3%	-0.1%	+0.4%	+0.9%	+0.5%	+1.0%	+1.1%	-0.0%	+0.8%

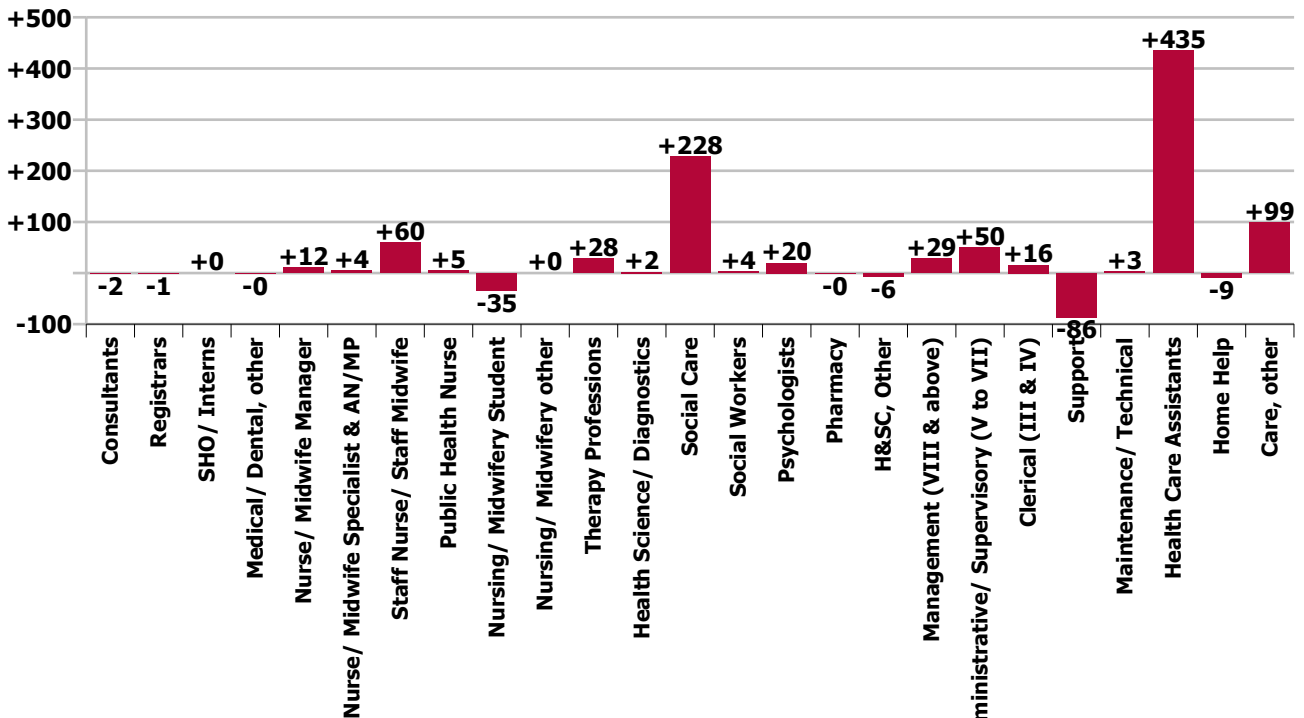
Year-on-year Summary

WTE change since Apr 20	% change since Apr 20	overall	Consultants	Registrars	SHO/ Interns	Medical/ Dental, other	Medical & Dental	Nurse/ Midwife Manager	Nurse/ Midwife Specialist & AN/MP	Staff Nurse/ Staff Midwife	Public Health Nurse	Nursing/ Midwifery Student	Nursing/ Midwifery other	Nursing & Midwifery	Therapy Professions	Health Science/ Diagnostics	Social Care	Social Workers	Psychologists	Pharmacy	H&SC, Other	Health & Social Care Professionals	Management (VIII & above)	Administrativ e/ Supervisory (V to VII)	Clerical (III & IV)	Management & Administrativ e	Support	Maintenance/ Technical	General Support	Health Care Assistants	Home Help	Care, other	Patient & Client Care
Overall	+4.7%	+855	-2	-1	+0	-0	-3	+12	+4	+60	+5	-35	+0	+46	+28	+2	+228	+4	+20	-0	-6	+275	+29	+50	+16	+95	-86	+3	-84	+435	-9	+99	+525
CHO 1	+4.3%	+66				-0	-0	-0	+2	+21	+1	-2	-1	+21	-5		+2	-2	+7		-0	+2	+3	+3	+5	+11	-2		-2	+29	+0	+4	+33
CHO 2	+5.3%	+77	-0	-0			-0	+5	+1	-3				+4	-3		+20	+1	-0		-3	+15	+1	+3	+2	+6	+3	-0	+3	+42		+8	+50
CHO 3	+5.6%	+103	-0				-0	-0	-2	+11		-16		-7	+2	+1	+40	+0	-0		-1	+42	+1	+5	-3	+3	-1	+5	+4	+57		+4	+61
CHO 4	+5.9%	+143	+1				+1	-3	+1	+3		+5	-1	+4	-1		+10	-0	+3		+1	+13	+0	+2	+3	+6	+4	+2	+6	+69		+44	+113
CHO 5	+8.0%	+119	-0				-0	+6	+1	-7	+4	-1	+1	+5	+15		-4	+3	+9		-1	+23	+3	+9	+7	+19	-1	-1	-2	+70	-7	+12	+74
CHO 6	+5.7%	+66		+1			+1	-0		+4				+4	+5		+49	+2	-1		-1	+55	+0	+2	-4	-1	-18	-2	-20	+24		+3	+27
CHO 7	+3.6%	+108		-0	+1		+1	+2	-1	+8			+2	+11	+1		+30	-4	-2	-0		+24	+6	+8	+2	+15	-19	+2	-18	+60	-1	+16	+75
CHO 8	+3.6%	+79	-1				-1	+2	-2	+7		-14	-0	-8	+5		+13	+2	+1		+1	+22	+4	-6	+0	-2	-4	-2	-6	+70	-1	+4	+73
CHO 9	+2.9%	+93	-1	-1	-1	-0	-3	+1	+4	+15		-7	-1	+11	+9	+1	+68	+1	+3		-2	+80	+10	+23	+4	+37	-48	-1	-49	+15		+3	+18
other Community Services	+20.2%	+1																						+1		+1							
		+4.7%	-7.0%	-6.2%	+1.3%	-2.3%	-4.4%	+1.3%	+7.0%	+2.3%	+94.3%	-27.0%	+1.0%	+1.3%	+3.7%	+12.5%	+8.8%	+1.7%	+9.2%	-4.2%	-8.1%	+7.0%	+15.7%	+9.9%	+2.3%	+6.9%	-11.7%	+2.1%	-9.7%	+6.5%	-8.7%	+6.2%	+6.2%

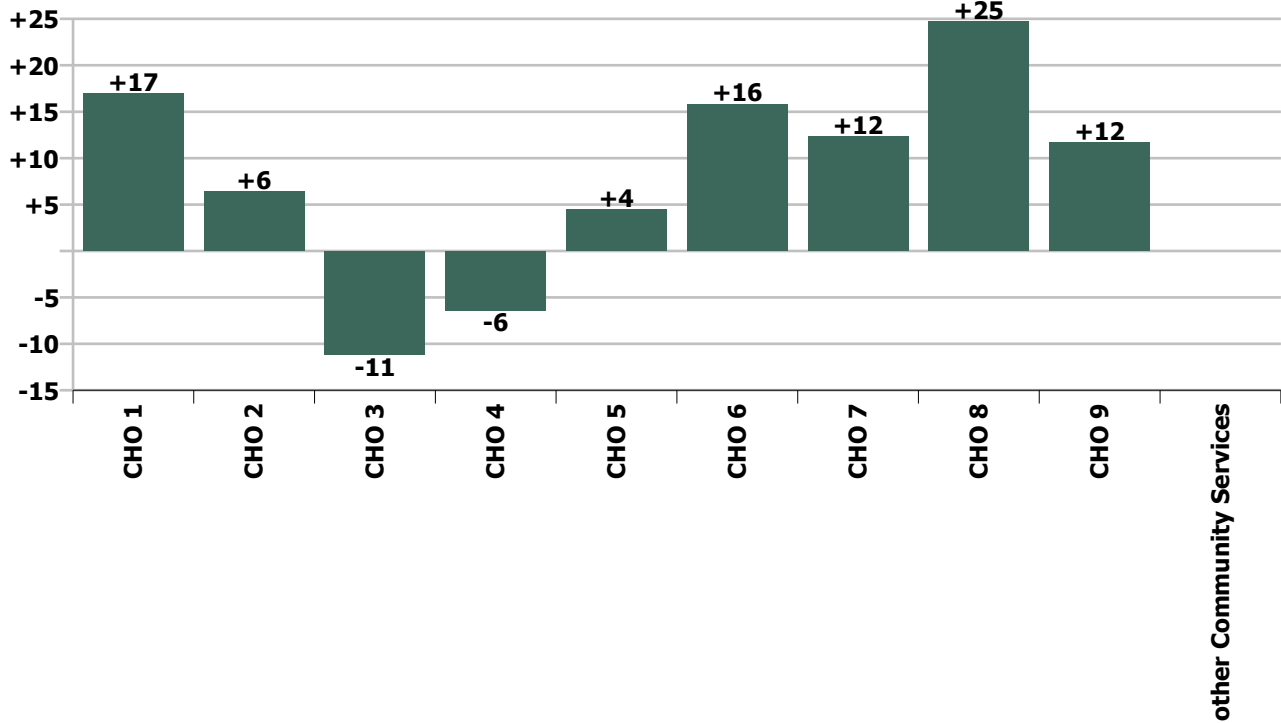
Staff Group change since: Mar 2021



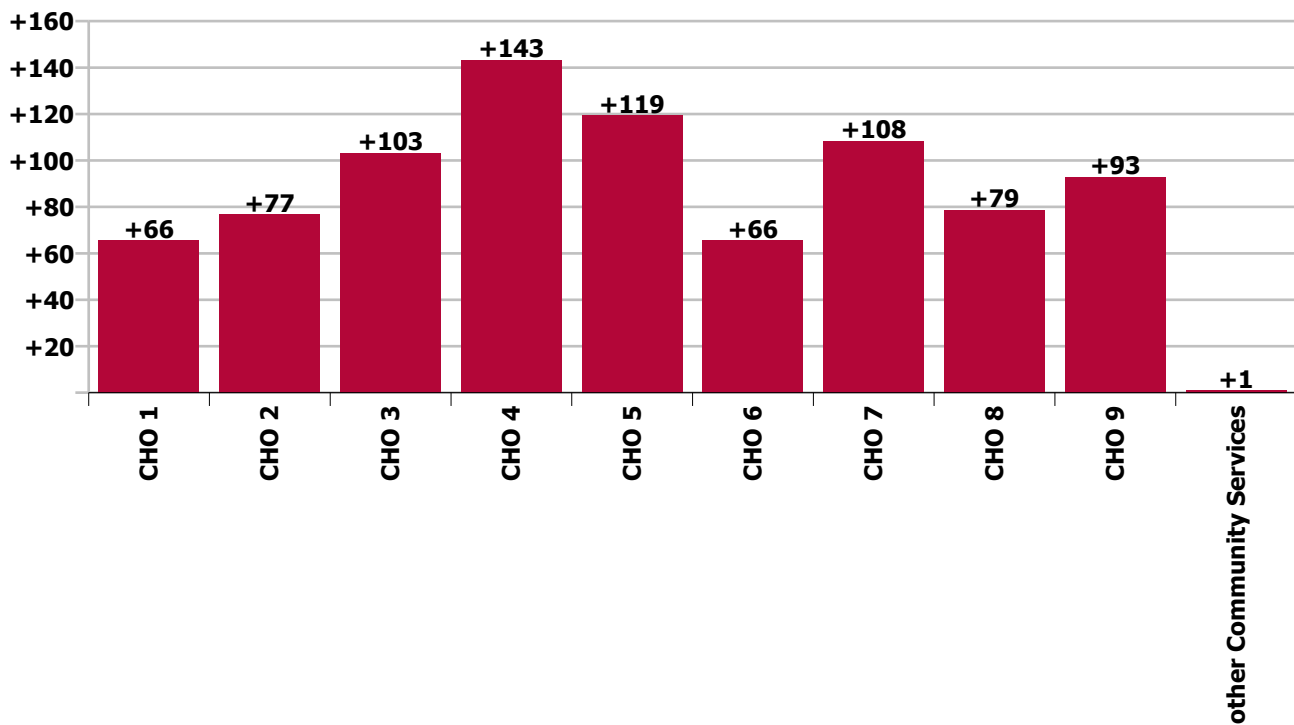
Staff Group change since: Apr 2020



CHO change since: Mar 2021



CHO change since: Apr 2020



Longitudinal Employment Levels by Grade Group - Dec 2015 to Apr 2021

Apr 2021 (Dec 2015 figure: 15,715)	WTE Apr 2021	WTE change since Dec 15	WTE change since Dec 16	WTE change since Dec 17	WTE change since Dec 18	WTE change since Dec 19	WTE change since Dec 20	% change since Dec 15	% change since Dec 16	% change since Dec 17	% change since Dec 18	% change since Dec 19	% change since Dec 20
Overall	19,114	+3,399	+2,360	+1,717	+1,294	+811	+169	+21.6%	+14.1%	+9.9%	+7.3%	+4.4%	+0.9%
Consultant Medicine		-2	-2					-100.0%	-100.0%	-100.0%	-100.0%	-100.0%	-100.0%
Consultant Paediatrics	3	-0	-0	-0				-3.5%	-5.0%	-2.9%			
Consultant Psychiatry	19	-2	-3	-4	+1	-2	-3	-11.5%	-12.4%	-18.9%	+3.4%	-11.1%	-13.3%
Consultant Surgery		-0	-0					-100.0%	-100.0%	-100.0%	-100.0%	-100.0%	-100.0%
Consultants	22	-4	-4	-4	+1	-2	-3	-16.3%	-17.1%	-17.0%	+2.9%	-9.7%	-11.6%
Registrar	5	-1	-1	-1	-0	-2	+2	-15.5%	-15.5%	-15.5%	-4.7%	-27.6%	+69.0%
Senior Registrar	2	-1		-1			-1	-33.3%		-33.3%			-33.3%
Specialist Registrar	3	+1	+1	-1	+2	-1	+1	+34.5%	+34.5%	-32.8%	+169.0%	-32.8%	+34.5%
Registrars	10	-1	-0	-3	+1	-3	+2	-11.3%	-2.4%	-24.9%	+17.3%	-24.9%	+22.0%
SHO/ Interns	8	+3	+2	+1	+1	+1	-1	+60.8%	+34.0%	+14.9%	+15.7%	+15.5%	-10.7%
Dentists		-1						-100.0%	-100.0%	-100.0%	-100.0%	-100.0%	-100.0%
Other Medical	14	-1	-1	+0	+0	-0		-6.8%	-3.8%	+0.2%	+1.1%	-0.6%	
Medical/ Dental, other	14	-2	-1	+0	+0	-0		-9.9%	-3.8%	+0.2%	+1.1%	-0.6%	
Medical & Dental	54	-4	-3	-7	+3	-5	-2	-6.9%	-5.7%	-10.9%	+6.5%	-7.8%	-3.6%
Clinical Nurse/ Midwife Manager	819	+21	+8	+11	+11	+9	+5	+2.7%	+1.0%	+1.3%	+1.4%	+1.1%	+0.6%
Director Nursing/Midwifery, Assistant	47	+10	+5	+10	+9	+6	+1	+28.0%	+10.9%	+26.6%	+23.5%	+15.0%	+2.8%
Director of Nursing/Midwifery	35	-12	-9	-11	-3	-8	-2	-26.3%	-20.7%	-23.9%	-8.7%	-17.8%	-6.1%
Nurse/ Midwife Manager	901	+19	+4	+10	+17	+7	+4	+2.2%	+0.4%	+1.1%	+1.9%	+0.8%	+0.4%
Advanced Nurse/ Midwife Practitioner	8	+7	+7	+6	+6	+6		+700.0%	+700.0%	+300.0%	+300.0%	+300.0%	
Clinical Nurse/ Midwife Specialist	58	-16	-13	-10	-8	-2	+2	-21.2%	-18.4%	-14.8%	-12.6%	-3.4%	+3.4%
Nurse/ Midwife Specialist & AN/MP	66	-9	-6	-4	-2	+4	+2	-11.5%	-8.4%	-5.8%	-3.5%	+6.4%	+3.0%
Graduate Nursing/ Midwifery		-11						-100.0%	-100.0%	-100.0%	-100.0%	-100.0%	-100.0%
Staff Nurse [Intellectual Disability]	1,754	-26	+29	+51	+70	+157	-34	-1.4%	+1.7%	+3.0%	+4.2%	+9.8%	-1.9%
Staff Nurse [Psychiatric]	203	+98	+118	+133	+132	+120	+151	+92.5%	+139.6%	+188.4%	+186.6%	+143.3%	+286.0%
Staff Nurses [General/ Children's]	638	-258	-295	-286	-230	-253	-114	-28.8%	-31.6%	-30.9%	-26.5%	-28.4%	-15.1%
Staff Nurse/ Staff Midwife	2,596	-197	-147	-102	-28	+23	+3	-7.1%	-5.4%	-3.8%	-1.1%	+0.9%	+0.1%
Public Health Nurse	11	+4	+4	+5	+4	+5	+4	+51.5%	+69.0%	+80.0%	+63.9%	+75.2%	+59.7%
Pre-registration Nurse/ Midwife Intern	81	+67	+69	+69	+46	+53	+79	+468.8%	+576.9%	+589.0%	+133.3%	+187.5%	+3149.2%
Pre-registration Nurse Intern (COVID-19)	0	+0	+0	+0	+0	+0	-31	-100.0%	-100.0%	-100.0%	-100.0%	-100.0%	-98.9%
Nursing/ Midwifery awaiting registration	13	+13	+13	+13	+13	-1		-100.0%	-100.0%	-100.0%	-100.0%	-6.1%	
Nursing/ Midwifery Student	95	+80	+83	+83	+60	+53	+47	+562.4%	+688.3%	+702.3%	+171.7%	+124.7%	+100.0%
Nursing Education/Clinical	24	+4	+3	+3	+3	+3	+1	+18.0%	+13.3%	+14.2%	+13.8%	+13.7%	+5.6%
Other Nursing/ Midwifery	2	-4	-3	-3	+1	+1	+1	-69.0%	-60.0%	-60.0%	+100.0%	+100.0%	+100.0%
Nursing/ Midwifery other	26	-1	-0	-0	+4	+4	+2	-2.9%	-0.6%	-0.0%	+17.7%	+17.6%	+9.6%
Nursing & Midwifery	3,694	-103	-63	-8	+55	+96	+62	-2.7%	-1.7%	-0.2%	+1.5%	+2.7%	+1.7%
Dietitians	16	+4	+3	+4	+2	-2	-0	+36.9%	+22.5%	+35.3%	+17.6%	-12.6%	-1.7%
Occupational Therapists	287	+86	+36	+39	+46	+23	+9	+42.5%	+14.3%	+15.5%	+19.2%	+8.7%	+3.1%

Apr 2021 (Dec 2015 figure: 15,715)	WTE Apr 2021	WTE change since Dec 15	WTE change since Dec 16	WTE change since Dec 17	WTE change since Dec 18	WTE change since Dec 19	WTE change since Dec 20	% change since Dec 15	% change since Dec 16	% change since Dec 17	% change since Dec 18	% change since Dec 19	% change since Dec 20
Overall	19,114	+3,399	+2,360	+1,717	+1,294	+811	+169	+21.6%	+14.1%	+9.9%	+7.3%	+4.4%	+0.9%
Physiotherapists	188	+23	+4	+4	+8	-1	-5	+13.8%	+2.0%	+2.0%	+4.2%	-0.4%	-2.4%
Podiatrists & Chiropodists		-0	-0	-0				-100.0%	-100.0%	-100.0%	-100.0%	-100.0%	-100.0%
Speech & Language Therapists	306	+93	+35	+23	+27	+13	-2	+43.5%	+12.9%	+8.2%	+9.6%	+4.4%	-0.5%
Therapy Professions	798	+205	+78	+70	+83	+33	+2	+34.7%	+10.8%	+9.6%	+11.6%	+4.3%	+0.3%
Audiology		-14	-13	-18				-100.0%	-100.0%	-100.0%	-100.0%	-100.0%	-100.0%
Clinical Engineering	14	-4	-4	-4	+2	+1	+1	-22.9%	-23.8%	-22.5%	+16.2%	+7.3%	+7.7%
Clinical Measurement	2	+1	+1	+1	+1	+1		+100.0%	+100.0%	+100.0%	+100.0%	+100.0%	
Medical Science	4	+1	+1	+1				+33.3%	+33.3%	+33.3%			
Phlebotomists					-1	-1		-100.0%	-100.0%	-100.0%	-100.0%	-100.0%	-100.0%
Radiographers	1												
Health Science/ Diagnostics	21	-16	-15	-20	+2	+1	+1	-43.4%	-41.8%	-48.7%	+10.3%	+4.7%	+5.0%
Social Care	2,824	+885	+633	+478	+335	+229	+35	+45.6%	+28.9%	+20.4%	+13.5%	+8.8%	+1.2%
Social Workers	229	+40	+14	+9	+10	+11	+1	+21.3%	+6.4%	+4.0%	+4.6%	+4.8%	+0.5%
Psychologists	234	+43	+24	+11	+28	+30	+5	+22.2%	+11.6%	+4.7%	+13.4%	+14.8%	+2.2%
Pharmacy	6	+0	+0	+0	-1	-1	+0	+1.3%	+1.3%	+2.0%	-11.3%	-8.4%	+3.0%
Counsellor Therapists	21	+4	+4	+2	+3	+2	+1	+25.8%	+24.3%	+7.8%	+17.9%	+10.8%	+6.0%
HSCP Trainees/ Students		-3	-2	-1				-100.0%	-100.0%	-100.0%	-100.0%	-100.0%	-100.0%
Other Health & Social Care	42	-20	-17	-17	-10	-9	-3	-32.7%	-28.6%	-29.2%	-19.8%	-17.7%	-7.7%
Play Therapists/ Specialists	11	-2	-3	-2	-4	-5	-0	-18.1%	-21.2%	-18.4%	-26.2%	-30.4%	-1.1%
H&SC, Other	73	-21	-18	-19	-11	-12	-2	-22.6%	-19.6%	-20.2%	-12.9%	-13.6%	-3.2%
Health & Social Care Professionals	4,186	+1,135	+716	+529	+446	+291	+42	+37.2%	+20.6%	+14.5%	+11.9%	+7.5%	+1.0%
Executive Management	39	+11	+10	+1	+7	+8	+3	+37.5%	+32.8%	+1.3%	+21.1%	+25.1%	+6.9%
Senior Management (VIII & GM)	175	+44	+37	+34	+30	+26	+7	+34.1%	+27.3%	+24.3%	+21.1%	+17.5%	+4.2%
Management (VIII & above)	213	+55	+47	+35	+37	+34	+10	+34.7%	+28.2%	+19.4%	+21.1%	+18.8%	+4.7%
Middle Management (V-VII)	537	+193	+157	+144	+109	+73	+26	+56.3%	+41.5%	+36.8%	+25.5%	+15.7%	+5.0%
Other Administrative	14	-1	+0	-2	-2	-1	-2	-8.2%	+1.3%	-12.3%	-11.5%	-6.4%	-11.5%
Administrative/ Supervisory (V to VII)	551	+192	+158	+142	+107	+72	+24	+53.5%	+40.1%	+34.9%	+24.1%	+15.0%	+4.5%
Clerical (III & IV)	693	+110	+86	+61	+39	+33	+8	+18.8%	+14.2%	+9.6%	+6.0%	+4.9%	+1.1%
Management & Administrative	1,457	+357	+291	+238	+184	+138	+41	+32.4%	+24.9%	+19.5%	+14.4%	+10.5%	+2.9%
Catering	90	-26	-23	-15	-14	-7	-6	-22.5%	-20.1%	-14.4%	-13.3%	-7.7%	-5.8%
Household Services	398	-151	-110	-69	-54	-22	-8	-27.5%	-21.6%	-14.7%	-11.9%	-5.2%	-2.0%
Other Labs & Associated	1	-0	+0	+0	+0	+0	+0	-5.8%	+5.6%	+13.0%	+8.7%	+13.0%	+13.0%
Other Support	143	-64	-51	-47	-48	-45	+7	-31.1%	-26.3%	-24.6%	-25.2%	-24.1%	+5.3%
Portering	18	-10	-8	-8	-7	-9	-6	-34.2%	-31.1%	-30.7%	-28.6%	-33.5%	-24.6%
Support	650	-251	-191	-138	-123	-84	-12	-27.8%	-22.7%	-17.6%	-15.9%	-11.4%	-1.8%
Maintenance	120	-7	-5	-11	+0	+4	-1	-5.6%	-3.8%	-8.4%	+0.1%	+3.3%	-1.1%
Technical Services	11	+6	+6	+6	+5	+3		+117.6%	+117.6%	+117.6%	+82.0%	+37.0%	
Maintenance/ Technical	131	-1	+1	-5	+5	+7	-1	-0.9%	+1.0%	-3.7%	+4.0%	+5.5%	-1.0%

Apr 2021 (Dec 2015 figure: 15,715)	WTE Apr 2021	WTE change since Dec 15	WTE change since Dec 16	WTE change since Dec 17	WTE change since Dec 18	WTE change since Dec 19	WTE change since Dec 20	% change since Dec 15	% change since Dec 16	% change since Dec 17	% change since Dec 18	% change since Dec 19	% change since Dec 20
Overall	19,114	+3,399	+2,360	+1,717	+1,294	+811	+169	+21.6%	+14.1%	+9.9%	+7.3%	+4.4%	+0.9%
General Support	782	-252	-190	-144	-118	-77	-14	-24.4%	-19.6%	-15.5%	-13.1%	-8.9%	-1.7%
HCA, Nurse's Aide, etc.	7,140	+1,971	+1,387	+965	+610	+324	+49	+38.1%	+24.1%	+15.6%	+9.3%	+4.8%	+0.7%
Health & Social Care Assistants	12	+2	+1	+3	+1	+2	+1	+14.6%	+11.8%	+31.9%	+10.1%	+25.4%	+8.6%
Health Care Assistants	7,152	+1,973	+1,388	+967	+611	+326	+50	+38.1%	+24.1%	+15.6%	+9.3%	+4.8%	+0.7%
Home Help	91	-1	-4	-32	-21	-17	-2	-1.3%	-4.2%	-26.1%	-18.9%	-15.9%	-2.5%
Care, other	1,698	+294	+225	+174	+135	+58	-8	+21.0%	+15.3%	+11.4%	+8.6%	+3.6%	-0.5%
Patient & Client Care	8,942	+2,266	+1,610	+1,109	+725	+367	+40	+33.9%	+22.0%	+14.2%	+8.8%	+4.3%	+0.4%

Source: Health Service Personnel Census