

# Social Care Disability Services Employment Report: August 2020

## Employment by Staff Group

Aug 2020 (Dec 2019 figure: 18,303)	WTE Jul 2020	WTE Aug 2020	WTE change since Jul 20	% change since Jul 20	WTE change since Dec 19	WTE change since Aug 19
<b>Overall</b>	<b>18,419</b>	<b>18,499</b>	<b>+81</b>	<b>+0.4%</b>	<b>+197</b>	<b>+444</b>
Consultants	22	23	+1	+3.6%	-1	-1
Registrars	10	9	-1	-9.5%	-4	-4
SHO/ Interns	9	8	-1	-14.6%	+1	+1
Medical/ Dental, other	14	15	+1	+4.6%	+1	+1
<b>Medical &amp; Dental</b>	<b>56</b>	<b>55</b>	<b>-1</b>	<b>-1.4%</b>	<b>-4</b>	<b>-3</b>
Nurse/ Midwife Manager	899	896	-3	-0.4%	+2	+5
Nurse/ Midwife Specialist & AN/MP	65	65	+0	+0.0%	+3	+4
Staff Nurse/ Staff Midwife	2,521	2,523	+1	+0.1%	-50	-5
Public Health Nurse	6	7	+0	+7.1%	+0	+1
<i>Pre-registration Nurse/ Midwife Intern</i>	7	15.00	+8	+120.9%	-13	-52
<i>Pre-registration Nurse Intern (COVID-19)</i>	155	125.47	-29	-19.0%	+125	+125
<i>Post-registration Nurse/ Midwife Student</i>	4	4.00	+0	+1.8%	+4	+4
<i>Nursing/ Midwifery awaiting registration</i>	11	11.00			-3	+11
Nursing/ Midwifery Student	177	155	-21	-12.0%	+113	+89
Nursing/ Midwifery other	25	25	-0	-1.3%	+2	+2
<b>Nursing &amp; Midwifery</b>	<b>3,693</b>	<b>3,670</b>	<b>-23</b>	<b>-0.6%</b>	<b>+71</b>	<b>+96</b>
Therapy Professions	782	779	-3	-0.4%	+14	+45
Health Science/ Diagnostics	19	20	+1	+5.1%	-0	-0
Social Care	2,618	2,669	+51	+2.0%	+74	+101
Social Workers	221	214	-7	-3.2%	-5	+2
Psychologists	212	213	+0	+0.0%	+8	+5
Pharmacy	8	6	-2	-21.3%	-1	-0
H&SC, Other	83	82	-1	-1.5%	-3	+0
<b>Health &amp; Social Care Professionals</b>	<b>3,944</b>	<b>3,983</b>	<b>+39</b>	<b>+1.0%</b>	<b>+89</b>	<b>+153</b>
Management (VIII & above)	190	197	+6	+3.3%	+17	+16
Administrative/ Supervisory (V to VII)	499	503	+4	+0.8%	+24	+37
Clerical (III & IV)	680	677	-3	-0.5%	+17	+37
<b>Management &amp; Administrative</b>	<b>1,369</b>	<b>1,376</b>	<b>+7</b>	<b>+0.5%</b>	<b>+57</b>	<b>+90</b>
Support	708	699	-9	-1.2%	-35	-23
Maintenance/ Technical	130	130	-0	-0.0%	+6	+6
<b>General Support</b>	<b>838</b>	<b>829</b>	<b>-9</b>	<b>-1.0%</b>	<b>-29</b>	<b>-17</b>
Health Care Assistants	6,833	6,890	+57	+0.8%	+64	+93
Home Help	101	102	+1	+1.4%	-6	-6
Care, other	1,585	1,593	+8	+0.5%	-46	+38
<b>Patient &amp; Client Care</b>	<b>8,519</b>	<b>8,586</b>	<b>+67</b>	<b>+0.8%</b>	<b>+12</b>	<b>+125</b>

## Social Care Disability Services Employment by Administration (HSE / S38): August 2020

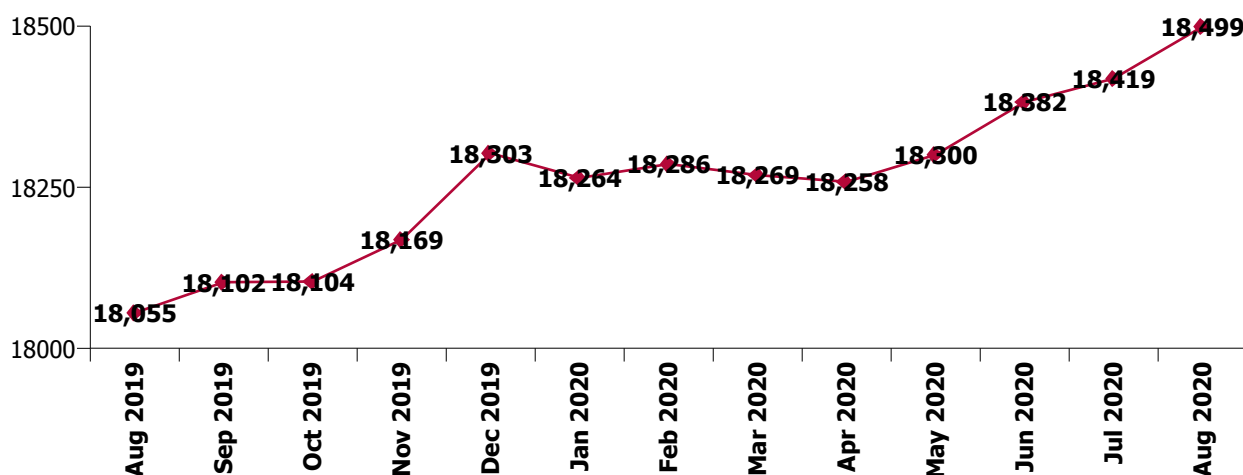
Aug 2020 (Dec 2019 figure: 18,303)	WTE Jul 2020	WTE Aug 2020	WTE change since Jul 20	% change since Jul 20	WTE change since Dec 19	WTE change since Aug 19
<b>Overall</b>	<b>18,419</b>	<b>18,499</b>	<b>+81</b>	<b>+0.4%</b>	<b>+197</b>	<b>+444</b>
<b>HSE</b>	<b>3,987</b>	<b>3,991</b>	<b>+4</b>	<b>+0.1%</b>	<b>+88</b>	<b>+149</b>
<b>Section 38</b>	<b>14,431</b>	<b>14,508</b>	<b>+77</b>	<b>+0.5%</b>	<b>+108</b>	<b>+295</b>

### HSE

Aug 2020 (Dec 2019 figure: 3,903)	WTE Jul 2020	WTE Aug 2020	WTE change since Jul 20	% change since Jul 20	WTE change since Dec 19	WTE change since Aug 19
<b>Overall</b>	<b>3,987</b>	<b>3,991</b>	<b>+4</b>	<b>+0.1%</b>	<b>+88</b>	<b>+149</b>
Consultants	8	7.50				
Registrars	2	1.62	-0	-10.5%	-1	-1
SHO/ Interns	2	1.00	-1	-45.4%	+1	+1
Medical/ Dental, other	6	7.00	+1	+10.6%	+1	+1
<b>Medical &amp; Dental</b>	<b>17</b>	<b>17</b>	<b>-0</b>	<b>-2.0%</b>	<b>+0</b>	<b>+0</b>
Nurse/ Midwife Manager	260	260.84	+1	+0.5%	+2	+12
Nurse/ Midwife Specialist & AN/MP	18	17.58	-0	-0.4%	+4	+4
Staff Nurse/ Staff Midwife	772	771.31	-1	-0.1%	-20	-13
Public Health Nurse	6	6.61	+0	+7.1%	+0	+1
<i>Pre-registration Nurse/ Midwife Intern</i>	7	15.00	+8	+120.9%	+12	-6
<i>Pre-registration Nurse Intern (COVID-19)</i>	38	30.89	-7	-17.8%	+31	+31
<i>Nursing/ Midwifery awaiting registration</i>	11	11.00			-3	+11
Nursing/ Midwifery Student	55	56.89	+2	+2.7%	+40	+36
Nursing/ Midwifery other	8	7.73	+0	+0.8%	+0	+0
<b>Nursing &amp; Midwifery</b>	<b>1,119</b>	<b>1,121</b>	<b>+2</b>	<b>+0.2%</b>	<b>+27</b>	<b>+40</b>
Therapy Professions	349	356.77	+8	+2.2%	+25	+39
Health Science/ Diagnostics	3	3.91	+1	+32.5%	+2	+2
Social Care	93	93.65	+1	+0.5%	+5	+0
Social Workers	65	63.92	-1	-1.5%	+6	+7
Psychologists	75	72.86	-2	-3.3%	-3	-6
H&SC, Other	26	25.86	+0	+0.5%	-0	+0
<b>Health &amp; Social Care Professionals</b>	<b>611</b>	<b>617</b>	<b>+6</b>	<b>+1.0%</b>	<b>+34</b>	<b>+43</b>
Management (VIII & above)	53	56.30	+3	+6.4%	+12	+12
Administrative/ Supervisory (V to VII)	151	153.76	+3	+1.7%	+12	+21
Clerical (III & IV)	191	191.17	+0	+0.2%	+13	+28
<b>Management &amp; Administrative</b>	<b>395</b>	<b>401</b>	<b>+6</b>	<b>+1.6%</b>	<b>+37</b>	<b>+61</b>
Support	86	84.68	-1	-1.1%	-4	-8
Maintenance/ Technical	27	25.00	-2	-6.8%	+4	+4
<b>General Support</b>	<b>112</b>	<b>110</b>	<b>-3</b>	<b>-2.5%</b>	<b>+0</b>	<b>-4</b>
Health Care Assistants	1,521	1,514.32	-7	-0.4%	-4	+14
Home Help	101	102.47	+1	+1.4%	-6	-6
Care, other	111	108.64	-2	-1.8%	-0	+1
<b>Patient &amp; Client Care</b>	<b>1,733</b>	<b>1,725</b>	<b>-7</b>	<b>-0.4%</b>	<b>-10</b>	<b>+10</b>

## Section 38

Aug 2020 (Dec 2019 figure: 14,400)	WTE Jul 2020	WTE Aug 2020	WTE change since Jul 20	% change since Jul 20	WTE change since Dec 19	WTE change since Aug 19
<b>Overall</b>	<b>14,431</b>	<b>14,508</b>	<b>+77</b>	<b>+0.5%</b>	<b>+108</b>	<b>+295</b>
Consultants	15	15.65	+1	+5.5%	-1	-1
Registrars	8	7.00	-1	-9.2%	-3	-3
SHO/ Interns	7	6.90	-1	-7.0%	-0	-0
Medical/ Dental, other	8	8.09				
<b>Medical &amp; Dental</b>	<b>38</b>	<b>38</b>	<b>-0</b>	<b>-1.1%</b>	<b>-4</b>	<b>-4</b>
Nurse/ Midwife Manager	640	635.32	-4	-0.7%	-0	-7
Nurse/ Midwife Specialist & AN/MP	47	46.97	+0	+0.2%	-1	-0
Staff Nurse/ Staff Midwife	1,749	1,751.22	+2	+0.1%	-30	+9
Pre-registration Nurse/ Midwife Intern				-100.0%	-25	-46
Pre-registration Nurse Intern (COVID-19)	117	94.58	-23	-19.4%	+95	+95
Post-registration Nurse/ Midwife Student	4	4.00	+0	+1.8%	+4	+4
Nursing/ Midwifery Student	121	98.58	-23	-18.7%	+74	+52
Nursing/ Midwifery other	17	16.87	-0	-2.3%	+2	+2
<b>Nursing &amp; Midwifery</b>	<b>2,574</b>	<b>2,549</b>	<b>-25</b>	<b>-1.0%</b>	<b>+45</b>	<b>+56</b>
Therapy Professions	433	422.13	-11	-2.5%	-11	+6
Health Science/ Diagnostics	16	16.00			-2	-2
Social Care	2,525	2,575.63	+51	+2.0%	+70	+101
Social Workers	156	150.20	-6	-3.9%	-11	-5
Psychologists	137	139.66	+3	+1.9%	+12	+11
Pharmacy	8	6.12	-2	-21.3%	-1	-0
H&SC, Other	58	56.29	-1	-2.4%	-2	-0
<b>Health &amp; Social Care Professionals</b>	<b>3,333</b>	<b>3,366</b>	<b>+33</b>	<b>+1.0%</b>	<b>+54</b>	<b>+110</b>
Management (VIII & above)	137	140.39	+3	+2.1%	+5	+5
Administrative/ Supervisory (V to VII)	348	349.10	+1	+0.4%	+11	+16
Clerical (III & IV)	489	485.54	-4	-0.8%	+4	+9
<b>Management &amp; Administrative</b>	<b>974</b>	<b>975</b>	<b>+1</b>	<b>+0.1%</b>	<b>+21</b>	<b>+29</b>
<b>General Support</b>	<b>725</b>	<b>720</b>	<b>-6</b>	<b>-0.8%</b>	<b>-29</b>	<b>-13</b>
<b>Patient &amp; Client Care</b>	<b>6,787</b>	<b>6,861</b>	<b>+74</b>	<b>+1.1%</b>	<b>+22</b>	<b>+116</b>



## Social Care Disability Services Employment by CHO Aug 2020

### CHO 1

Aug 2020 (Dec 2019 figure: 1,498)	WTE Jul 2020	WTE Aug 2020	WTE change since Jul 20	% change since Jul 20	WTE change since Dec 19	WTE change since Aug 19
<b>Overall</b>	<b>1,536</b>	<b>1,542</b>	<b>+7</b>	<b>+0.4%</b>	<b>+44</b>	<b>+59</b>
Consultants				-100.0%		
Medical/ Dental, other	3	3			+0	+0
<b>Medical &amp; Dental</b>	<b>3</b>	<b>3</b>			<b>+0</b>	<b>+0</b>
Nurse/ Midwife Manager	109	107	-1	-1.2%	+2	+6
Nurse/ Midwife Specialist & AN/MP	10	10	-0	-0.4%	+3	+3
Staff Nurse/ Staff Midwife	319	323	+4	+1.1%	-1	-9
<i>Pre-registration Nurse/ Midwife Intern</i>				-100.0%	-11	-11
<i>Pre-registration Nurse Intern (COVID-19)</i>	27	28	+1	+2.7%	+28	+28
<i>Nursing/ Midwifery awaiting registration</i>	11	11			+11	+11
Nursing/ Midwifery Student	38	39	+1	+1.9%	+25	+28
Nursing/ Midwifery other	5	5	+0	+1.3%	+0	+0
<b>Nursing &amp; Midwifery</b>	<b>480</b>	<b>483</b>	<b>+3</b>	<b>+0.6%</b>	<b>+29</b>	<b>+28</b>
Therapy Professions	44	42	-3	-6.3%	-1	+3
Social Care	9	9	-0	-0.8%	+1	+0
Social Workers	20	19	-0	-2.1%	+4	+6
Psychologists	6	6	-0	-0.2%	+1	+1
H&SC, Other	10	10	+1	+7.0%	-2	-2
<b>Health &amp; Social Care Professionals</b>	<b>88</b>	<b>85</b>	<b>-3</b>	<b>-3.0%</b>	<b>+3</b>	<b>+8</b>
Management (VIII & above)	15	15			+1	+2
Administrative/ Supervisory (V to VII)	32	33	+1	+2.2%	+6	+8
Clerical (III & IV)	50	50	+0	+0.6%	+0	+5
<b>Management &amp; Administrative</b>	<b>97</b>	<b>98</b>	<b>+1</b>	<b>+1.0%</b>	<b>+7</b>	<b>+15</b>
Support	50	50	-0	-0.1%	+1	+1
Maintenance/ Technical	6	6				-0
<b>General Support</b>	<b>56</b>	<b>56</b>	<b>-0</b>	<b>-0.1%</b>	<b>+1</b>	<b>+1</b>
Health Care Assistants	759	763	+4	+0.5%	+2	+3
Home Help	14	14	+1	+5.8%	+1	+1
Care, other	38	38	+0	+1.1%	+1	+3
<b>Patient &amp; Client Care</b>	<b>811</b>	<b>816</b>	<b>+5</b>	<b>+0.6%</b>	<b>+4</b>	<b>+7</b>

## CHO 2

Aug 2020 (Dec 2019 figure: 1,497)	WTE Jul 2020	WTE Aug 2020	WTE change since Jul 20	% change since Jul 20	WTE change since Dec 19	WTE change since Aug 19
<b>Overall</b>	<b>1,479</b>	<b>1,482</b>	<b>+3</b>	<b>+0.2%</b>	<b>-15</b>	<b>+6</b>
Consultants	3	3				
Registrars	2	2	-0	-9.1%		
Medical/ Dental, other	1	1				
<b>Medical &amp; Dental</b>	<b>7</b>	<b>6</b>	<b>-0</b>	<b>-3.0%</b>		
Nurse/ Midwife Manager	77	77	+0	+0.1%	-0	+4
Nurse/ Midwife Specialist & AN/MP	5	5	+0	+0.2%	-1	-1
Staff Nurse/ Staff Midwife	162	163	+1	+0.9%	-2	-3
<i>Pre-registration Nurse Intern (COVID-19)</i>	1	1	+0	+4.2%	+1	+1
Nursing/ Midwifery Student	1	1	+0	+4.2%	+1	+1
<b>Nursing &amp; Midwifery</b>	<b>245</b>	<b>247</b>	<b>+2</b>	<b>+0.6%</b>	<b>-2</b>	<b>+1</b>
Therapy Professions	34	31	-3	-8.8%	-10	-8
Social Care	239	239	-0	-0.0%	+17	+15
Social Workers	26	23	-3	-10.8%	-3	-2
Psychologists	14	16	+1	+10.1%	-0	-1
H&SC, Other	13	12	-1	-8.4%	-4	-2
<b>Health &amp; Social Care Professionals</b>	<b>327</b>	<b>321</b>	<b>-6</b>	<b>-1.7%</b>	<b>+0</b>	<b>+2</b>
Management (VIII & above)	16	17	+1	+6.9%	+1	+1
Administrative/ Supervisory (V to VII)	40	40	+1	+1.5%	-0	+1
Clerical (III & IV)	48	48	+0	+0.6%	-2	-3
<b>Management &amp; Administrative</b>	<b>103</b>	<b>105</b>	<b>+2</b>	<b>+1.9%</b>	<b>-1</b>	<b>-1</b>
Support	35	35	+0	+0.2%	-9	-3
Maintenance/ Technical	13	13			+0	+0
<b>General Support</b>	<b>48</b>	<b>48</b>	<b>+0</b>	<b>+0.1%</b>	<b>-9</b>	<b>-3</b>
Health Care Assistants	620	628	+8	+1.3%	+5	+7
Care, other	129	126	-2	-1.9%	-8	-0
<b>Patient &amp; Client Care</b>	<b>749</b>	<b>754</b>	<b>+6</b>	<b>+0.7%</b>	<b>-3</b>	<b>+7</b>

### CHO 3

Aug 2020 (Dec 2019 figure: 1,823)	WTE Jul 2020	WTE Aug 2020	WTE change since Jul 20	% change since Jul 20	WTE change since Dec 19	WTE change since Aug 19
<b>Overall</b>	<b>1,899</b>	<b>1,894</b>	<b>-5</b>	<b>-0.3%</b>	<b>+71</b>	<b>+78</b>
Consultants	2	1	-0	-8.8%	+0	-1
Medical/ Dental, other	1	1				
<b>Medical &amp; Dental</b>	<b>3</b>	<b>2</b>	<b>-0</b>	<b>-5.5%</b>	<b>+0</b>	<b>-1</b>
Nurse/ Midwife Manager	79	79	-1	-0.8%	+3	+5
Nurse/ Midwife Specialist & AN/MP	11	11			-2	+1
Staff Nurse/ Staff Midwife	251	253	+2	+0.6%	+5	+3
Pre-registration Nurse/ Midwife Intern				-100.0%	-7	-4
Pre-registration Nurse Intern (COVID-19)	24	2	-22	-92.3%	+2	+2
Nursing/ Midwifery Student	24	2	-22	-92.3%	-10	-2
Nursing/ Midwifery other	4	4				
<b>Nursing &amp; Midwifery</b>	<b>369</b>	<b>348</b>	<b>-21</b>	<b>-5.7%</b>	<b>-3</b>	<b>+6</b>
Therapy Professions	79	79	+1	+0.6%	+5	+6
Health Science/ Diagnostics	1	2	+1	+101.1%	+2	+2
Social Care	260	265	+5	+1.8%	+24	+15
Social Workers	14	14	-0	-0.7%	-3	-4
Psychologists	22	21	-1	-4.7%	+5	+5
H&SC, Other	12	12			+0	+1
<b>Health &amp; Social Care Professionals</b>	<b>388</b>	<b>393</b>	<b>+5</b>	<b>+1.3%</b>	<b>+33</b>	<b>+25</b>
Management (VIII & above)	7	8	+1	+14.7%	+1	+1
Administrative/ Supervisory (V to VII)	44	44	+0	+0.4%	+3	+2
Clerical (III & IV)	60	60	-0	-0.4%	+1	+3
<b>Management &amp; Administrative</b>	<b>111</b>	<b>112</b>	<b>+1</b>	<b>+0.8%</b>	<b>+5</b>	<b>+6</b>
Support	54	55	+1	+1.1%	+2	-2
Maintenance/ Technical	19	18	-1	-4.4%	+4	+4
<b>General Support</b>	<b>73</b>	<b>73</b>	<b>-0</b>	<b>-0.3%</b>	<b>+6</b>	<b>+2</b>
Health Care Assistants	783	795	+12	+1.5%	+30	+36
Care, other	173	172	-1	-0.7%	-1	+4
<b>Patient &amp; Client Care</b>	<b>956</b>	<b>967</b>	<b>+11</b>	<b>+1.1%</b>	<b>+29</b>	<b>+39</b>

## CHO 4

Aug 2020 (Dec 2019 figure: 2,439)	WTE Jul 2020	WTE Aug 2020	WTE change since Jul 20	% change since Jul 20	WTE change since Dec 19	WTE change since Aug 19
<b>Overall</b>	<b>2,495</b>	<b>2,495</b>	<b>-0</b>	<b>-0.0%</b>	<b>+57</b>	<b>+22</b>
Consultants	2	2				
Medical/ Dental, other	0	1	+1	+203.0%	+1	+1
<b>Medical &amp; Dental</b>	<b>2</b>	<b>3</b>	<b>+1</b>	<b>+36.6%</b>	<b>+1</b>	<b>+1</b>
Nurse/ Midwife Manager	90	88	-1	-1.5%	-1	-4
Nurse/ Midwife Specialist & AN/MP	14	13	-1	-6.9%		+0
Staff Nurse/ Staff Midwife	305	301	-4	-1.2%	-8	-10
Pre-registration Nurse/ Midwife Intern				-100.0%	-8	-11
Pre-registration Nurse Intern (COVID-19)	27	28	+1	+2.3%	+28	+28
Nursing/ Midwifery awaiting registration				-100.0%		
Nursing/ Midwifery Student	27	28	+1	+2.3%	+21	+18
Nursing/ Midwifery other	1	1				
<b>Nursing &amp; Midwifery</b>	<b>437</b>	<b>431</b>	<b>-5</b>	<b>-1.2%</b>	<b>+12</b>	<b>+3</b>
Therapy Professions	103	101	-1	-1.2%	-7	-7
Social Care	229	232	+3	+1.2%	+5	+2
Social Workers	26	26	+0	+0.3%	-1	+0
Psychologists	33	33	-0	-0.9%	-2	-2
H&SC, Other	11	10	-0	-2.9%	+2	+2
<b>Health &amp; Social Care Professionals</b>	<b>402</b>	<b>403</b>	<b>+1</b>	<b>+0.2%</b>	<b>-2</b>	<b>-4</b>
Management (VIII & above)	24	22	-1	-5.3%	+0	+0
Administrative/ Supervisory (V to VII)	54	55	+1	+2.0%	+2	+3
Clerical (III & IV)	89	89	-0	-0.3%	+5	+1
<b>Management &amp; Administrative</b>	<b>167</b>	<b>166</b>	<b>-0</b>	<b>-0.3%</b>	<b>+6</b>	<b>+5</b>
Support	140	137	-3	-2.1%	-4	-1
Maintenance/ Technical	10	10	+0	+0.0%	+0	+0
<b>General Support</b>	<b>150</b>	<b>147</b>	<b>-3</b>	<b>-2.0%</b>	<b>-4</b>	<b>-1</b>
Health Care Assistants	1,038	1,037	-1	-0.1%	+43	-5
Care, other	300	308	+8	+2.6%	+1	+23
<b>Patient &amp; Client Care</b>	<b>1,338</b>	<b>1,345</b>	<b>+7</b>	<b>+0.5%</b>	<b>+43</b>	<b>+18</b>

## CHO 5

Aug 2020 (Dec 2019 figure: 1,505)	WTE Jul 2020	WTE Aug 2020	WTE change since Jul 20	% change since Jul 20	WTE change since Dec 19	WTE change since Aug 19
<b>Overall</b>	<b>1,505</b>	<b>1,512</b>	<b>+7</b>	<b>+0.5%</b>	<b>+7</b>	<b>+54</b>
Consultants		1	+1	-100.0%		
Medical/ Dental, other				-100.0%		-0
<b>Medical &amp; Dental</b>		<b>1</b>	<b>+1</b>	<b>-100.0%</b>		<b>-0</b>
Nurse/ Midwife Manager	68	69	+1	+0.8%	+3	-2
Nurse/ Midwife Specialist & AN/MP	3	3			+1	+1
Staff Nurse/ Staff Midwife	161	160	-1	-0.3%	-10	+10
Public Health Nurse	5	6	+0	+8.4%	+0	+1
<i>Pre-registration Nurse/ Midwife Intern</i>				-100.0%		-11
<i>Pre-registration Nurse Intern (COVID-19)</i>	7	7	-0	-2.3%	+7	+7
<i>Post-registration Nurse/ Midwife Student</i>	4	4	+0	+1.8%	+4	+4
<i>Nursing/ Midwifery awaiting registration</i>				-100.0%		
Nursing/ Midwifery Student	11	11	-0	-0.9%	+9	+0
<b>Nursing &amp; Midwifery</b>	<b>249</b>	<b>249</b>	<b>+0</b>	<b>+0.2%</b>	<b>+4</b>	<b>+11</b>
Therapy Professions	59	59	+1	+1.0%	-4	+1
Social Care	140	143	+3	+2.2%	-11	-13
Social Workers	22	20	-2	-8.7%	-1	-1
Psychologists	13	14	+1	+3.9%	-0	+1
H&SC, Other	8	7	-1	-7.3%	+0	-1
<b>Health &amp; Social Care Professionals</b>	<b>241</b>	<b>243</b>	<b>+2</b>	<b>+0.7%</b>	<b>-16</b>	<b>-14</b>
Management (VIII & above)	11	12	+1	+4.4%	+1	+2
Administrative/ Supervisory (V to VII)	39	39	+0	+0.3%	+1	+1
Clerical (III & IV)	57	57	-0	-0.3%	-3	-1
<b>Management &amp; Administrative</b>	<b>108</b>	<b>108</b>	<b>+0</b>	<b>+0.4%</b>	<b>-2</b>	<b>+3</b>
Support	15	14	-0	-2.3%	-1	-5
Maintenance/ Technical	7	7				-1
<b>General Support</b>	<b>22</b>	<b>22</b>	<b>-0</b>	<b>-1.6%</b>	<b>-1</b>	<b>-6</b>
Health Care Assistants	699	708	+9	+1.3%	+37	+58
Home Help	45	46	+1	+1.6%	-8	-7
Care, other	141	136	-5	-3.7%	-8	+9
<b>Patient &amp; Client Care</b>	<b>885</b>	<b>890</b>	<b>+4</b>	<b>+0.5%</b>	<b>+21</b>	<b>+60</b>



## CHO 6

Aug 2020 (Dec 2019 figure: 1,198)	WTE Jul 2020	WTE Aug 2020	WTE change since Jul 20	% change since Jul 20	WTE change since Dec 19	WTE change since Aug 19
<b>Overall</b>	<b>1,172</b>	<b>1,187</b>	<b>+15</b>	<b>+1.3%</b>	<b>-10</b>	<b>+17</b>
Consultants	3	3				
Medical/ Dental, other	1	1				
<b>Medical &amp; Dental</b>	<b>4</b>	<b>4</b>				
Nurse/ Midwife Manager	43	43	-0	-0.7%	-0	-2
Staff Nurse/ Staff Midwife	135	136	+1	+0.5%	-11	-8
<b>Nursing &amp; Midwifery</b>	<b>179</b>	<b>179</b>	<b>+0</b>	<b>+0.2%</b>	<b>-12</b>	<b>-10</b>
Therapy Professions	40	41	+1	+2.3%	-1	-1
Social Care	320	332	+12	+3.8%	-2	-1
Social Workers	10	9	-1	-7.7%	-2	-4
Psychologists	15	16	+1	+3.6%	+2	-1
H&SC, Other	1	1	-0	-18.0%	-1	+0
<b>Health &amp; Social Care Professionals</b>	<b>386</b>	<b>398</b>	<b>+13</b>	<b>+3.3%</b>	<b>-4</b>	<b>-6</b>
Management (VIII & above)	32	31	-1	-3.1%	+0	+0
Administrative/ Supervisory (V to VII)	55	55	+0	+0.8%	+2	+4
Clerical (III & IV)	65	65	-0	-0.3%	+11	+13
<b>Management &amp; Administrative</b>	<b>152</b>	<b>151</b>	<b>-1</b>	<b>-0.5%</b>	<b>+13</b>	<b>+17</b>
Support	45	46	+1	+1.7%	+23	+15
Maintenance/ Technical	7	6	-1	-11.4%	-1	+2
<b>General Support</b>	<b>52</b>	<b>52</b>	<b>-0</b>	<b>-0.1%</b>	<b>+22</b>	<b>+18</b>
Health Care Assistants	176	173	-3	-1.8%	-14	+7
Care, other	225	231	+6	+2.8%	-16	-8
<b>Patient &amp; Client Care</b>	<b>400</b>	<b>404</b>	<b>+3</b>	<b>+0.8%</b>	<b>-30</b>	<b>-1</b>

## CHO 7

Aug 2020 (Dec 2019 figure: 2,982)	WTE Jul 2020	WTE Aug 2020	WTE change since Jul 20	% change since Jul 20	WTE change since Dec 19	WTE change since Aug 19
<b>Overall</b>	<b>3,009</b>	<b>3,028</b>	<b>+19</b>	<b>+0.6%</b>	<b>+46</b>	<b>+100</b>
Consultants	1	1				
Registrars	3	3				+0
SHO/ Interns	7	7	-1	-7.0%	-0	-0
Medical/ Dental, other	1	1				
<b>Medical &amp; Dental</b>	<b>12</b>	<b>11</b>	<b>-1</b>	<b>-4.3%</b>	<b>-0</b>	<b>+0</b>
Nurse/ Midwife Manager	125	123	-2	-1.3%	+1	-5
Nurse/ Midwife Specialist & AN/MP	3	4	+1	+30.8%	-1	-1
Staff Nurse/ Staff Midwife	379	377	-1	-0.3%	+3	+17
Pre-registration Nurse/ Midwife Intern				-100.0%		-7
Pre-registration Nurse Intern (COVID-19)	15	15			+15	+15
Nursing/ Midwifery Student	15	15			+15	+8
Nursing/ Midwifery other	1	2	+1	+200.0%	+1	+1
<b>Nursing &amp; Midwifery</b>	<b>522</b>	<b>521</b>	<b>-1</b>	<b>-0.2%</b>	<b>+19</b>	<b>+20</b>
Therapy Professions	143	147	+4	+2.7%	+25	+28
Health Science/ Diagnostics	3	3				
Social Care	362	367	+5	+1.4%	+7	+18
Social Workers	33	33	-0	-0.5%	-0	+2
Psychologists	30	29	-1	-2.3%	+1	+0
Pharmacy	6	4	-2	-28.7%	-1	-0
H&SC, Other	2	2				
<b>Health &amp; Social Care Professionals</b>	<b>578</b>	<b>584</b>	<b>+6</b>	<b>+1.1%</b>	<b>+32</b>	<b>+49</b>
Management (VIII & above)	38	38	+0	+0.0%	+6	+4
Administrative/ Supervisory (V to VII)	84	87	+2	+2.6%	+8	+6
Clerical (III & IV)	99	98	-1	-1.3%	+6	+7
<b>Management &amp; Administrative</b>	<b>221</b>	<b>222</b>	<b>+1</b>	<b>+0.4%</b>	<b>+19</b>	<b>+17</b>
Support	162	158	-4	-2.4%	-8	-10
Maintenance/ Technical	30	32	+3	+8.5%	+4	+4
<b>General Support</b>	<b>192</b>	<b>191</b>	<b>-1</b>	<b>-0.7%</b>	<b>-4</b>	<b>-6</b>
Health Care Assistants	1,091	1,101	+10	+1.0%	-11	+8
Home Help	18	18	+0	+0.4%	-1	-1
Care, other	374	378	+4	+1.0%	-8	+12
<b>Patient &amp; Client Care</b>	<b>1,483</b>	<b>1,498</b>	<b>+14</b>	<b>+1.0%</b>	<b>-20</b>	<b>+19</b>

## CHO 8

Aug 2020 (Dec 2019 figure: 2,162)	WTE Jul 2020	WTE Aug 2020	WTE change since Jul 20	% change since Jul 20	WTE change since Dec 19	WTE change since Aug 19
<b>Overall</b>	<b>2,153</b>	<b>2,166</b>	<b>+13</b>	<b>+0.6%</b>	<b>+4</b>	<b>+29</b>
Consultants	1	1				
Registrars	2	2	-0	-10.5%	-0	-0
Medical/ Dental, other	1	1				
<b>Medical &amp; Dental</b>	<b>4</b>	<b>4</b>	<b>-0</b>	<b>-5.0%</b>	<b>-0</b>	<b>-0</b>
Nurse/ Midwife Manager	115	115	+1	+0.5%	-8	-5
Nurse/ Midwife Specialist & AN/MP	7	7	+0	+0.1%	+0	+0
Staff Nurse/ Staff Midwife	313	309	-4	-1.4%	-9	+3
Public Health Nurse	1	1				
<i>Pre-registration Nurse/ Midwife Intern</i>				-100.0%	-1	-11
<i>Pre-registration Nurse Intern (COVID-19)</i>	30	28	-1	-4.2%	+28	+28
Nursing/ Midwifery Student	30	28	-1	-4.2%	+28	+17
Nursing/ Midwifery other	7	6	-1	-19.3%	+0	+0
<b>Nursing &amp; Midwifery</b>	<b>473</b>	<b>467</b>	<b>-6</b>	<b>-1.3%</b>	<b>+11</b>	<b>+15</b>
Therapy Professions	93	92	-1	-0.6%	+0	+6
Health Science/ Diagnostics	2	2				
Social Care	366	376	+9	+2.6%	+15	+17
Social Workers	24	24	+0	+0.1%	+0	+1
Psychologists	20	19	-1	-5.2%	-6	-4
H&SC, Other	7	7	-0	-0.3%	-0	+1
<b>Health &amp; Social Care Professionals</b>	<b>512</b>	<b>520</b>	<b>+8</b>	<b>+1.5%</b>	<b>+9</b>	<b>+21</b>
Management (VIII & above)	12	13	+1	+8.3%	+4	+2
Administrative/ Supervisory (V to VII)	59	58	-1	-2.0%	+2	+3
Clerical (III & IV)	88	87	-1	-1.4%	+3	+5
<b>Management &amp; Administrative</b>	<b>159</b>	<b>158</b>	<b>-1</b>	<b>-0.9%</b>	<b>+9</b>	<b>+10</b>
Support	42	42	-0	-0.8%	-5	-6
Maintenance/ Technical	16	15	-1	-6.3%	-1	-1
<b>General Support</b>	<b>58</b>	<b>57</b>	<b>-1</b>	<b>-2.3%</b>	<b>-6</b>	<b>-7</b>
Health Care Assistants	813	829	+16	+2.0%	-14	-7
Home Help	24	24	-0	-0.5%	+1	+2
Care, other	110	108	-2	-1.6%	-7	-5
<b>Patient &amp; Client Care</b>	<b>947</b>	<b>961</b>	<b>+15</b>	<b>+1.5%</b>	<b>-20</b>	<b>-10</b>

## CHO 9

Aug 2020 (Dec 2019 figure: 3,194)	WTE Jul 2020	WTE Aug 2020	WTE change since Jul 20	% change since Jul 20	WTE change since Dec 19	WTE change since Aug 19
<b>Overall</b>	<b>3,167</b>	<b>3,186</b>	<b>+20</b>	<b>+0.6%</b>	<b>-8</b>	<b>+79</b>
Consultants	11	11	+0	+0.0%	-1	-0
Registrars	3	2	-1	-20.3%	-4	-4
SHO/ Interns	2	1	-1	-45.4%	+1	+1
Medical/ Dental, other	6	6				
<b>Medical &amp; Dental</b>	<b>22</b>	<b>20</b>	<b>-1</b>	<b>-6.1%</b>	<b>-4</b>	<b>-3</b>
Nurse/ Midwife Manager	194	195	+1	+0.4%	+3	+6
Nurse/ Midwife Specialist & AN/MP	10	11	+0	+0.8%	+2	+1
Staff Nurse/ Staff Midwife	496	500	+4	+0.8%	-17	-7
Pre-registration Nurse/ Midwife Intern	7	15	+8	+120.9%	+7	+3
Pre-registration Nurse Intern (COVID-19)	23	16	-7	-31.9%	+16	+16
Nursing/ Midwifery Student	30	31	+1	+2.5%	+23	+19
Nursing/ Midwifery other	8	8			+1	+1
<b>Nursing &amp; Midwifery</b>	<b>739</b>	<b>744</b>	<b>+5</b>	<b>+0.7%</b>	<b>+12</b>	<b>+20</b>
Therapy Professions	189	187	-1	-0.8%	+6	+17
Health Science/ Diagnostics	13	13			-2	-2
Social Care	694	708	+14	+2.1%	+19	+47
Social Workers	46	45	-1	-2.3%	+1	+2
Psychologists	59	60	+1	+1.1%	+7	+7
Pharmacy	2	2				
H&SC, Other	20	20	+0	+1.6%	+1	+2
<b>Health &amp; Social Care Professionals</b>	<b>1,023</b>	<b>1,036</b>	<b>+13</b>	<b>+1.2%</b>	<b>+33</b>	<b>+72</b>
Management (VIII & above)	36	41	+5	+14.0%	+3	+4
Administrative/ Supervisory (V to VII)	90	88	-1	-1.2%	+1	+7
Clerical (III & IV)	121	121	-1	-0.4%	-4	+6
<b>Management &amp; Administrative</b>	<b>247</b>	<b>250</b>	<b>+3</b>	<b>+1.4%</b>	<b>-0</b>	<b>+17</b>
Support	164	162	-2	-1.4%	-33	-12
Maintenance/ Technical	22	22	-0	-0.0%	-0	-2
<b>General Support</b>	<b>186</b>	<b>184</b>	<b>-2</b>	<b>-1.3%</b>	<b>-34</b>	<b>-14</b>
Health Care Assistants	855	856	+2	+0.2%	-13	-13
Care, other	95	96	+0	+0.2%	-1	+1
<b>Patient &amp; Client Care</b>	<b>950</b>	<b>952</b>	<b>+2</b>	<b>+0.2%</b>	<b>-14</b>	<b>-12</b>

## other Community Services

Aug 2020 (Dec 2019 figure: 5)	WTE Jul 2020	WTE Aug 2020	WTE change since Jul 20	% change since Jul 20	WTE change since Dec 19	WTE change since Aug 19
<b>Overall</b>	<b>5</b>	<b>6</b>	<b>+1</b>	<b>+20.4%</b>	<b>+1</b>	<b>+1</b>
Management (VIII & above)	1	1	+0	+1.0%		
Administrative/ Supervisory (V to VII)	2	3	+1	+50.0%	+1	+1
Clerical (III & IV)	2	2				
<b>Management &amp; Administrative</b>	<b>5</b>	<b>6</b>	<b>+1</b>	<b>+20.4%</b>	<b>+1</b>	<b>+1</b>

## Social Care Disability Services Employment by CHO & Admin : Aug 2020

Aug 2020 (Dec 2019 figure: 18,303)	WTE Jul 2020	WTE Aug 2020	WTE change since Jul 20	% change since Jul 20	WTE change since Dec 19	WTE change since Aug 19
<b>Overall</b>	<b>18,419</b>	<b>18,499</b>	<b>+81</b>	<b>+0.4%</b>	<b>+197</b>	<b>+444</b>
<b>CHO 1</b>	<b>1,536</b>	<b>1,542</b>	<b>+7</b>	<b>+0.4%</b>	<b>+44</b>	<b>+59</b>
Health Service Executive	213	215	+1	+0.6%	+6	+2
Bros. of Charity, West Region	1,265	1,268	+2	+0.2%	-21	+4
Section 38 Voluntary Agencies	1,265	1,268	+2	+0.2%	-21	+4
<b>CHO 2</b>	<b>1,479</b>	<b>1,482</b>	<b>+3</b>	<b>+0.2%</b>	<b>-15</b>	<b>+6</b>
Health Service Executive	138	137	-1	-0.9%	+15	+17
Bros. of Charity, Clare	341	353	+12	+3.5%	+5	+16
Bros. of Charity, Limerick	575	577	+2	+0.3%	+57	+55
Daughters of Charity, Limerick	556	540	-16	-2.8%	-3	-5
Daughters of Charity, Roscrea	289	287	-2	-0.7%	-3	-4
Section 38 Voluntary Agencies	1,761	1,757	-4	-0.2%	+56	+61
<b>CHO 3</b>	<b>1,899</b>	<b>1,894</b>	<b>-5</b>	<b>-0.3%</b>	<b>+71</b>	<b>+78</b>
Health Service Executive	302	291	-11	-3.8%	-1	-1
Bros. of Charity, Southern	756	763	+7	+0.9%	+22	+0
Cope Foundation	1,124	1,125	+1	+0.1%	+34	+16
St. John of God, Kerry	313	317	+4	+1.2%	+1	+7
Section 38 Voluntary Agencies	2,193	2,204	+11	+0.5%	+58	+23
<b>CHO 4</b>	<b>2,495</b>	<b>2,495</b>	<b>-0</b>	<b>-0.0%</b>	<b>+57</b>	<b>+22</b>
Health Service Executive	373	374	+0	+0.1%	-8	+28
Bros. of Charity, Waterford	636	639	+3	+0.4%	+9	+24
Carriglea Cairde Services	207	209	+2	+1.1%	-5	+4
St. Patrick's, Kilkenny	288	290	+2	+0.7%	+11	-2
Section 38 Voluntary Agencies	1,132	1,139	+7	+0.6%	+15	+26
<b>CHO 5</b>	<b>1,505</b>	<b>1,512</b>	<b>+7</b>	<b>+0.5%</b>	<b>+7</b>	<b>+54</b>
Health Service Executive	235	238	+3	+1.2%	+5	+6
Children's Sunshine Home	56	55	-1	-1.8%	-3	-2
St. John of God (IDS)	448	449	+1	+0.3%	-7	+7
Sunbeam House Services	433	445	+12	+2.9%	-4	+6
Section 38 Voluntary Agencies	937	949	+13	+1.4%	-15	+12
<b>CHO 6</b>	<b>1,172</b>	<b>1,187</b>	<b>+15</b>	<b>+1.3%</b>	<b>-10</b>	<b>+17</b>
Health Service Executive	123	126	+2	+1.8%	+25	+36
Cheeverstown House	395	393	-2	-0.5%	-4	-4
Kare, Newbridge, Co Kildare	335	347	+12	+3.6%	-13	+4
Peamount Hospital (Newcastle)	526	531	+5	+0.9%	+44	+38
Stewart's Hospital, (Palmerstown)	863	866	+3	+0.4%	+14	-6
St. John of God Liffey Services	768	766	-1	-0.2%	-21	+31
Section 38 Voluntary Agencies	2,885	2,902	+17	+0.6%	+21	+63
<b>CHO 7</b>	<b>3,009</b>	<b>3,028</b>	<b>+19</b>	<b>+0.6%</b>	<b>+46</b>	<b>+100</b>
Health Service Executive	603	597	-6	-1.0%	-13	+2
Muiriosa Foundation, Laois/Offaly	291	304	+13	+4.4%	+2	-1
Muiriosa Foundation, Longford/Westmeath	269	279	+10	+3.6%	+9	+8
Muiriosa Foundation, South Kildare	344	342	-2	-0.6%	+9	+9
St. John of God, Drumcar	645	644	-1	-0.2%	-3	+11

Aug 2020 (Dec 2019 figure: 18,303)	WTE Jul 2020	WTE Aug 2020	WTE change since Jul 20	% change since Jul 20	WTE change since Dec 19	WTE change since Aug 19
<b>Overall</b>	<b>18,419</b>	<b>18,499</b>	<b>+81</b>	<b>+0.4%</b>	<b>+197</b>	<b>+444</b>
<b>Section 38 Voluntary Agencies</b>	<b>1,549</b>	<b>1,568</b>	<b>+19</b>	<b>+1.2%</b>	<b>+17</b>	<b>+27</b>
<b>CHO 8</b>	<b>2,153</b>	<b>2,166</b>	<b>+13</b>	<b>+0.6%</b>	<b>+4</b>	<b>+29</b>
<b>Health Service Executive</b>	<b>457</b>	<b>466</b>	<b>+8</b>	<b>+1.8%</b>	<b>+15</b>	<b>+1</b>
Central Remedial Clinic	283	281	-2	-0.7%	+3	+9
Daughters of Charity, Dublin	1,050	1,050	+0	+0.0%	+16	+36
St. Michael's House, Dublin	1,376	1,389	+13	+0.9%	-42	+32
<b>Section 38 Voluntary Agencies</b>	<b>2,709</b>	<b>2,721</b>	<b>+11</b>	<b>+0.4%</b>	<b>-23</b>	<b>+78</b>
<b>CHO 9</b>	<b>3,167</b>	<b>3,186</b>	<b>+20</b>	<b>+0.6%</b>	<b>-8</b>	<b>+79</b>
<b>other Community Services</b>	<b>5</b>	<b>6</b>	<b>+1</b>	<b>+20.4%</b>	<b>+1</b>	<b>+1</b>

## Social Care Disability Services Employment by CHO Aug 2020

### Bros. of Charity, Clare

Aug 2020 (Dec 2019 figure: 348)	WTE Jul 2020	WTE Aug 2020	WTE change since Jul 20	% change since Jul 20	WTE change since Dec 19	WTE change since Aug 19
<b>Overall</b>	<b>341</b>	<b>353</b>	<b>+12</b>	<b>+3.5%</b>	<b>+5</b>	<b>+16</b>
Consultants	0	0	+0	+50.0%	+0	+0
<b>Medical &amp; Dental</b>	<b>0</b>	<b>0</b>	<b>+0</b>	<b>+50.0%</b>	<b>+0</b>	<b>+0</b>
Nurse/ Midwife Manager				-100.0%		
Staff Nurse/ Staff Midwife	2	2	+0	+3.2%	+0	+0
<i>Pre-registration Nurse Intern (COVID-19)</i>	1	1			+1	+1
Nursing/ Midwifery Student	1	1			+1	+1
<b>Nursing &amp; Midwifery</b>	<b>3</b>	<b>3</b>	<b>+0</b>	<b>+2.2%</b>	<b>+1</b>	<b>+1</b>
Social Care	81	82	+1	+1.5%	+0	-7
Social Workers	1	1			-2	-2
Psychologists	3	3				
H&SC, Other	4	4			-0	-0
<b>Health &amp; Social Care Professionals</b>	<b>88</b>	<b>90</b>	<b>+1</b>	<b>+1.4%</b>	<b>-2</b>	<b>-9</b>
Management (VIII & above)	1	1				
Administrative/ Supervisory (V to VII)	5	5	+0	+2.0%	+0	+0
Clerical (III & IV)	5	5	-1	-10.0%	+0	+0
<b>Management &amp; Administrative</b>	<b>11</b>	<b>11</b>	<b>-0</b>	<b>-3.7%</b>	<b>+0</b>	<b>+1</b>
Health Care Assistants	208	219	+10	+5.0%	+6	+22
Care, other	31	32	+1	+1.9%	-0	+2
<b>Patient &amp; Client Care</b>	<b>239</b>	<b>250</b>	<b>+11</b>	<b>+4.6%</b>	<b>+6</b>	<b>+23</b>

Aug 2020 (Dec 2019 figure: 520)	WTE Jul 2020	WTE Aug 2020	WTE change since Jul 20	% change since Jul 20	WTE change since Dec 19	WTE change since Aug 19
<b>Overall</b>	<b>575</b>	<b>577</b>	<b>+2</b>	<b>+0.3%</b>	<b>+57</b>	<b>+55</b>
Consultants	2	1	-0	-12.7%	+0	-1
<b>Medical &amp; Dental</b>	<b>2</b>	<b>1</b>	<b>-0</b>	<b>-12.7%</b>	<b>+0</b>	<b>-1</b>
Nurse/ Midwife Manager	28	29	+0	+1.4%	+4	+3
Nurse/ Midwife Specialist & AN/MP	4	4			-1	+1
Staff Nurse/ Staff Midwife	88	89	+1	+1.7%	+6	+7
<b>Nursing &amp; Midwifery</b>	<b>120</b>	<b>122</b>	<b>+2</b>	<b>+1.6%</b>	<b>+8</b>	<b>+11</b>
Therapy Professions	15	15			+3	+3
Social Care	98	100	+2	+1.8%	+14	+15
Social Workers	4	4	-0	-2.3%	-1	-2
Psychologists	6	6			+0	+1
H&SC, Other	2	2			+1	+1
<b>Health &amp; Social Care Professionals</b>	<b>124</b>	<b>126</b>	<b>+2</b>	<b>+1.3%</b>	<b>+18</b>	<b>+18</b>
Management (VIII & above)	2	2				
Administrative/ Supervisory (V to VII)	6	6	-0	-1.9%	-0	-0
Clerical (III & IV)	11	11	+0	+0.2%	-2	-2
<b>Management &amp; Administrative</b>	<b>19</b>	<b>18</b>	<b>-0</b>	<b>-0.5%</b>	<b>-2</b>	<b>-2</b>
Support	5	6	+1	+11.6%	-1	-2
Maintenance/ Technical	2	2			-0	-0
<b>General Support</b>	<b>7</b>	<b>8</b>	<b>+1</b>	<b>+8.4%</b>	<b>-2</b>	<b>-2</b>
Health Care Assistants	210	209	-1	-0.7%	+30	+22
Care, other	93	92	-1	-0.7%	+5	+9
<b>Patient &amp; Client Care</b>	<b>303</b>	<b>301</b>	<b>-2</b>	<b>-0.7%</b>	<b>+34</b>	<b>+30</b>



Aug 2020 (Dec 2019 figure: 740)	WTE Jul 2020	WTE Aug 2020	WTE change since Jul 20	% change since Jul 20	WTE change since Dec 19	WTE change since Aug 19
<b>Overall</b>	<b>756</b>	<b>763</b>	<b>+7</b>	<b>+0.9%</b>	<b>+22</b>	<b>+0</b>
Nurse/ Midwife Manager	15	15	-0	-2.9%	-1	-2
Nurse/ Midwife Specialist & AN/MP	4	3	-1	-25.4%		+0
Staff Nurse/ Staff Midwife	56	56	+0	+0.4%	-3	-6
<b>Nursing &amp; Midwifery</b>	<b>75</b>	<b>74</b>	<b>-1</b>	<b>-1.6%</b>	<b>-3</b>	<b>-8</b>
Therapy Professions	46	44	-2	-5.1%	-4	-5
Social Care	126	127	+1	+0.7%	+3	-1
Social Workers	17	16	-0	-1.5%	-1	-0
Psychologists	18	18	-0	-1.6%	-2	-2
<b>Health &amp; Social Care Professionals</b>	<b>207</b>	<b>205</b>	<b>-2</b>	<b>-1.0%</b>	<b>-4</b>	<b>-8</b>
Management (VIII & above)	8	8	-0	-0.6%	+0	+0
Administrative/ Supervisory (V to VII)	10	10			+1	
Clerical (III & IV)	35	34	-1	-2.5%	+1	-2
<b>Management &amp; Administrative</b>	<b>54</b>	<b>53</b>	<b>-1</b>	<b>-1.7%</b>	<b>+3</b>	<b>-2</b>
Support	16	14	-2	-12.8%	-1	-2
Maintenance/ Technical	2	2				
<b>General Support</b>	<b>18</b>	<b>16</b>	<b>-2</b>	<b>-11.7%</b>	<b>-1</b>	<b>-2</b>
Health Care Assistants	222	228	+6	+2.6%	+21	+0
Care, other	180	188	+8	+4.2%	+6	+19
<b>Patient &amp; Client Care</b>	<b>402</b>	<b>415</b>	<b>+13</b>	<b>+3.3%</b>	<b>+27</b>	<b>+20</b>

Aug 2020 (Dec 2019 figure: 630)	WTE Jul 2020	WTE Aug 2020	WTE change since Jul 20	% change since Jul 20	WTE change since Dec 19	WTE change since Aug 19
<b>Overall</b>	<b>636</b>	<b>639</b>	<b>+3</b>	<b>+0.4%</b>	<b>+9</b>	<b>+24</b>
Consultants		1	+1	-100.0%		
<b>Medical &amp; Dental</b>		<b>1</b>	<b>+1</b>	<b>-100.0%</b>		
Nurse/ Midwife Manager	22	23	+1	+4.3%	-2	-1
Staff Nurse/ Staff Midwife	47	45	-2	-4.2%	-3	+5
<i>Pre-registration Nurse/ Midwife Intern</i>				-100.0%		-6
<i>Pre-registration Nurse Intern (COVID-19)</i>	7	7	-0	-2.3%	+7	+7
Nursing/ Midwifery Student	7	7	-0	-2.3%	+7	+1
<b>Nursing &amp; Midwifery</b>	<b>76</b>	<b>75</b>	<b>-1</b>	<b>-1.6%</b>	<b>+2</b>	<b>+5</b>
Therapy Professions	3	3				
Social Care	67	68	+1	+1.8%	+2	+1
Social Workers	9	7	-1	-17.3%	-2	-2
Psychologists	4	4			-0	-1
H&SC, Other	5	4	-1	-11.9%	+0	-0
<b>Health &amp; Social Care Professionals</b>	<b>87</b>	<b>86</b>	<b>-1</b>	<b>-1.0%</b>	<b>-1</b>	<b>-1</b>
Management (VIII & above)	5	5			+0	+1
Administrative/ Supervisory (V to VII)	16	16	+0	+0.3%	+3	+2
Clerical (III & IV)	24	24	-0	-0.1%	-1	-1
<b>Management &amp; Administrative</b>	<b>45</b>	<b>45</b>	<b>+0</b>	<b>+0.0%</b>	<b>+2</b>	<b>+3</b>
Support	1	1	+0	+21.2%	-0	
Maintenance/ Technical	3	3				
<b>General Support</b>	<b>4</b>	<b>4</b>	<b>+0</b>	<b>+6.1%</b>	<b>-0</b>	
Health Care Assistants	333	340	+7	+2.1%	+9	+11
Care, other	92	88	-3	-3.8%	-3	+7
<b>Patient &amp; Client Care</b>	<b>424</b>	<b>428</b>	<b>+4</b>	<b>+0.9%</b>	<b>+6</b>	<b>+18</b>

## Carriglea Cairde Services

Aug 2020 (Dec 2019 figure: 214)	WTE Jul 2020	WTE Aug 2020	WTE change since Jul 20	% change since Jul 20	WTE change since Dec 19	WTE change since Aug 19
<b>Overall</b>	<b>207</b>	<b>209</b>	<b>+2</b>	<b>+1.1%</b>	<b>-5</b>	<b>+4</b>
Nurse/ Midwife Manager	13	12	-0	-2.1%	+1	-0
Staff Nurse/ Staff Midwife	24	25	+1	+3.1%	-1	+0
<i>Pre-registration Nurse/ Midwife Intern</i>				-100.0%		-2
<i>Post-registration Nurse/ Midwife Student</i>	4	4	+0	+1.8%	+4	+4
Nursing/ Midwifery Student	4	4	+0	+1.8%	+4	+2
<b>Nursing &amp; Midwifery</b>	<b>41</b>	<b>42</b>	<b>+1</b>	<b>+1.3%</b>	<b>+4</b>	<b>+2</b>
Social Care	32	33	+2	+5.1%	-3	-3
<b>Health &amp; Social Care Professionals</b>	<b>32</b>	<b>33</b>	<b>+2</b>	<b>+5.1%</b>	<b>-3</b>	<b>-3</b>
Management (VIII & above)	2	2				
Administrative/ Supervisory (V to VII)	3	3			+0	+0
Clerical (III & IV)	6	6	-0	-3.1%	-1	-0
<b>Management &amp; Administrative</b>	<b>11</b>	<b>11</b>	<b>-0</b>	<b>-1.8%</b>	<b>-1</b>	<b>-0</b>
Support	7	7	-0	-3.8%	+2	+3
Maintenance/ Technical	1	1				-1
<b>General Support</b>	<b>9</b>	<b>8</b>	<b>-0</b>	<b>-3.2%</b>	<b>+2</b>	<b>+2</b>
Health Care Assistants	73	73	+1	+0.8%	-0	+2
Care, other	42	42	+0	+0.0%	-7	+1
<b>Patient &amp; Client Care</b>	<b>114</b>	<b>115</b>	<b>+1</b>	<b>+0.5%</b>	<b>-7</b>	<b>+2</b>

## Central Remedial Clinic

Aug 2020 (Dec 2019 figure: 278)	WTE Jul 2020	WTE Aug 2020	WTE change since Jul 20	% change since Jul 20	WTE change since Dec 19	WTE change since Aug 19
<b>Overall</b>	<b>283</b>	<b>281</b>	<b>-2</b>	<b>-0.7%</b>	<b>+3</b>	<b>+9</b>
Consultants	1	1				
Medical/ Dental, other	0	0				
<b>Medical &amp; Dental</b>	<b>2</b>	<b>2</b>				
Nurse/ Midwife Manager	2	2				
Nurse/ Midwife Specialist & AN/MP	2	2			+1	
Staff Nurse/ Staff Midwife	4	4			+1	+2
Nursing/ Midwifery other	1	1			+1	+1
<b>Nursing &amp; Midwifery</b>	<b>9</b>	<b>9</b>			<b>+3</b>	<b>+3</b>
Therapy Professions	77	74	-3	-3.3%	-3	+0
Health Science/ Diagnostics	13	13			-2	-2
Social Workers	9	9			+1	+1
Psychologists	11	11			+0	+1
<b>Health &amp; Social Care Professionals</b>	<b>109</b>	<b>107</b>	<b>-3</b>	<b>-2.3%</b>	<b>-4</b>	<b>+0</b>
Management (VIII & above)	5	5			-2	-2
Administrative/ Supervisory (V to VII)	15	15				+1
Clerical (III & IV)	33	32	-1	-1.5%	-0	+1
<b>Management &amp; Administrative</b>	<b>53</b>	<b>53</b>	<b>-1</b>	<b>-0.9%</b>	<b>-2</b>	<b>+0</b>
Support	14	14			+0	+0
Maintenance/ Technical	1	1				
<b>General Support</b>	<b>15</b>	<b>15</b>			<b>+0</b>	<b>+0</b>
Health Care Assistants	56	56	+0	+0.1%	+5	+2
Care, other	39	40	+1	+2.4%	+1	+3
<b>Patient &amp; Client Care</b>	<b>94</b>	<b>95</b>	<b>+1</b>	<b>+1.1%</b>	<b>+6</b>	<b>+5</b>

Aug 2020 (Dec 2019 figure: 396)	WTE Jul 2020	WTE Aug 2020	WTE change since Jul 20	% change since Jul 20	WTE change since Dec 19	WTE change since Aug 19
<b>Overall</b>	<b>395</b>	<b>393</b>	<b>-2</b>	<b>-0.5%</b>	<b>-4</b>	<b>-4</b>
Consultants	0	0				
Medical/ Dental, other	1	1				
<b>Medical &amp; Dental</b>	<b>1</b>	<b>1</b>				
Nurse/ Midwife Manager	30	29	-1	-1.7%	+3	+0
Nurse/ Midwife Specialist & AN/MP	2	2				
Staff Nurse/ Staff Midwife	104	102	-2	-1.4%	-5	+1
<b>Nursing &amp; Midwifery</b>	<b>135</b>	<b>133</b>	<b>-2</b>	<b>-1.5%</b>	<b>-2</b>	<b>+1</b>
Therapy Professions	11	12	+1	+11.2%	-1	-3
Social Care	33	33			-2	-4
Social Workers	5	5			-1	-1
Psychologists	5	5			+1	+2
Pharmacy	0	0			-0	-0
H&SC, Other	2	2				
<b>Health &amp; Social Care Professionals</b>	<b>56</b>	<b>57</b>	<b>+1</b>	<b>+2.2%</b>	<b>-3</b>	<b>-6</b>
Management (VIII & above)	2	2				-1
Administrative/ Supervisory (V to VII)	15	15				+0
Clerical (III & IV)	12	12			+1	+1
<b>Management &amp; Administrative</b>	<b>29</b>	<b>29</b>			<b>+1</b>	<b>-0</b>
Support	27	27			-0	+1
Maintenance/ Technical	4	4				
<b>General Support</b>	<b>30</b>	<b>30</b>				<b>+1</b>
Health Care Assistants	132	130	-1	-1.0%	+0	+1
Care, other	12	12			-0	-1
<b>Patient &amp; Client Care</b>	<b>143</b>	<b>142</b>	<b>-1</b>	<b>-0.9%</b>		<b>-1</b>

## Children's Sunshine Home

Aug 2020 (Dec 2019 figure: 58)	WTE Jul 2020	WTE Aug 2020	WTE change since Jul 20	% change since Jul 20	WTE change since Dec 19	WTE change since Aug 19
<b>Overall</b>	<b>56</b>	<b>55</b>	<b>-1</b>	<b>-1.8%</b>	<b>-3</b>	<b>-2</b>
Nurse/ Midwife Manager	8	8			+1	
Staff Nurse/ Staff Midwife	19	17	-2	-10.4%	-4	-1
<b>Nursing &amp; Midwifery</b>	<b>27</b>	<b>25</b>	<b>-2</b>	<b>-7.4%</b>	<b>-3</b>	<b>-1</b>
Therapy Professions	1	1			-1	-1
Social Workers	1	1				
<b>Health &amp; Social Care Professionals</b>	<b>2</b>	<b>2</b>			<b>-1</b>	<b>-1</b>
Management (VIII & above)	2	2			-1	-1
Administrative/ Supervisory (V to VII)	4	4				
General Administrative (III & IV)	1	1			+1	+1
Clerical (III & IV)	1	1				+1
<b>Management &amp; Administrative</b>	<b>7</b>	<b>7</b>			<b>-1</b>	
Support	3	3				-1
<b>General Support</b>	<b>3</b>	<b>3</b>				<b>-1</b>
Health Care Assistants	14	13	-1	-4.5%	-1	-1
Care, other	3	5	+2	+47.1%	+1	+1
<b>Patient &amp; Client Care</b>	<b>17</b>	<b>18</b>	<b>+1</b>	<b>+5.8%</b>	<b>+1</b>	<b>+0</b>

Aug 2020 (Dec 2019 figure: 1,091)	WTE Jul 2020	WTE Aug 2020	WTE change since Jul 20	% change since Jul 20	WTE change since Dec 19	WTE change since Aug 19
<b>Overall</b>	<b>1,124</b>	<b>1,125</b>	<b>+1</b>	<b>+0.1%</b>	<b>+34</b>	<b>+16</b>
Nurse/ Midwife Manager	41	41				
Nurse/ Midwife Specialist & AN/MP	10	10				
Staff Nurse/ Staff Midwife	168	168			-1	+0
Pre-registration Nurse/ Midwife Intern				-100.0%	-8	-9
Pre-registration Nurse Intern (COVID-19)	25	26	+1	+2.4%	+26	+26
Nursing/ Midwifery Student	25	26	+1	+2.4%	+20	+18
Nursing/ Midwifery other	1	1				
<b>Nursing &amp; Midwifery</b>	<b>245</b>	<b>246</b>	<b>+1</b>	<b>+0.3%</b>	<b>+19</b>	<b>+18</b>
Therapy Professions	37	37			-1	+0
Social Care	34	34			+2	-0
Social Workers	9	9				
Psychologists	11	11			+1	+1
H&SC, Other	3	3				
<b>Health &amp; Social Care Professionals</b>	<b>93</b>	<b>93</b>			<b>+3</b>	<b>+1</b>
Management (VIII & above)	7	7			+1	+1
Administrative/ Supervisory (V to VII)	19	19				
Clerical (III & IV)	25	25			+2	+2
<b>Management &amp; Administrative</b>	<b>51</b>	<b>51</b>			<b>+3</b>	<b>+3</b>
Support	77	77			+0	+6
Maintenance/ Technical	6	6				
<b>General Support</b>	<b>83</b>	<b>83</b>				<b>+6</b>
Health Care Assistants	575	575			+11	-18
Care, other	78	78			-1	+6
<b>Patient &amp; Client Care</b>	<b>653</b>	<b>653</b>			<b>+10</b>	<b>-12</b>

## Daughters of Charity, Dublin

Aug 2020 (Dec 2019 figure: 1,034)	WTE Jul 2020	WTE Aug 2020	WTE change since Jul 20	% change since Jul 20	WTE change since Dec 19	WTE change since Aug 19
<b>Overall</b>	<b>1,050</b>	<b>1,050</b>	<b>+0</b>	<b>+0.0%</b>	<b>+16</b>	<b>+36</b>
Consultants	2	2			+1	+1
Medical/ Dental, other	2	2				
<b>Medical &amp; Dental</b>	<b>4</b>	<b>4</b>			<b>+1</b>	<b>+1</b>
Nurse/ Midwife Manager	62	61	-1	-1.2%	-1	+2
Nurse/ Midwife Specialist & AN/MP	9	9	+0	+0.9%	+1	+1
Staff Nurse/ Staff Midwife	186	183	-2	-1.1%	-3	+2
<i>Pre-registration Nurse/ Midwife Intern</i>				-100.0%	-8	-8
<i>Pre-registration Nurse Intern (COVID-19)</i>	15	15			+15	+15
Nursing/ Midwifery Student	15	15			+8	+8
Nursing/ Midwifery other	4	4				
<b>Nursing &amp; Midwifery</b>	<b>276</b>	<b>273</b>	<b>-3</b>	<b>-1.0%</b>	<b>+5</b>	<b>+12</b>
Therapy Professions	34	32	-2	-4.5%	-1	+2
Social Care	165	168	+3	+1.6%	+5	+14
Social Workers	11	11			+1	+1
Psychologists	10	11	+1	+9.7%	+4	+3
Pharmacy	2	2				
H&SC, Other	5	5	+0	+6.7%	+1	+2
<b>Health &amp; Social Care Professionals</b>	<b>226</b>	<b>229</b>	<b>+2</b>	<b>+1.1%</b>	<b>+10</b>	<b>+21</b>
Management (VIII & above)	7	9	+2	+28.6%	+3	+2
Administrative/ Supervisory (V to VII)	27	27	+0	+0.0%	+2	+1
Clerical (III & IV)	32	32			-1	-0
<b>Management &amp; Administrative</b>	<b>66</b>	<b>68</b>	<b>+2</b>	<b>+3.0%</b>	<b>+4</b>	<b>+3</b>
Support	79	79	+1	+0.6%	+0	+1
Maintenance/ Technical	8	8				-1
<b>General Support</b>	<b>86</b>	<b>87</b>	<b>+1</b>	<b>+0.6%</b>	<b>+0</b>	<b>-0</b>
Health Care Assistants	361	359	-2	-0.5%	-2	+3
Care, other	31	31	-0	-0.0%	-1	-2
<b>Patient &amp; Client Care</b>	<b>392</b>	<b>390</b>	<b>-2</b>	<b>-0.5%</b>	<b>-3</b>	<b>+1</b>



## Daughters of Charity, Limerick

Aug 2020 (Dec 2019 figure: 543)	WTE Jul 2020	WTE Aug 2020	WTE change since Jul 20	% change since Jul 20	WTE change since Dec 19	WTE change since Aug 19
<b>Overall</b>	<b>556</b>	<b>540</b>	<b>-16</b>	<b>-2.8%</b>	<b>-3</b>	<b>-5</b>
Medical/ Dental, other	1	1				
<b>Medical &amp; Dental</b>	<b>1</b>	<b>1</b>				
Nurse/ Midwife Manager	35	35				+3
Nurse/ Midwife Specialist & AN/MP	7	7			-1	-1
Staff Nurse/ Staff Midwife	143	143			-0	-4
<i>Pre-registration Nurse/ Midwife Intern</i>				-100.0%	-7	-4
<i>Pre-registration Nurse Intern (COVID-19)</i>	23	1	-22	-95.7%	+1	+1
Nursing/ Midwifery Student	23	1	-22	-95.7%	-11	-3
Nursing/ Midwifery other	3	3				
<b>Nursing &amp; Midwifery</b>	<b>212</b>	<b>190</b>	<b>-22</b>	<b>-10.4%</b>	<b>-11</b>	<b>-4</b>
Therapy Professions	15	15				
Social Care	56	56	+1	+1.2%	+3	+1
Social Workers	5	5			+0	+0
Psychologists	7	7			+4	+3
H&SC, Other	6	6				
<b>Health &amp; Social Care Professionals</b>	<b>89</b>	<b>89</b>	<b>+1</b>	<b>+0.8%</b>	<b>+7</b>	<b>+4</b>
Management (VIII & above)	2	2				
Administrative/ Supervisory (V to VII)	10	10				
Clerical (III & IV)	14	14			-1	-1
<b>Management &amp; Administrative</b>	<b>26</b>	<b>26</b>			<b>-1</b>	<b>-1</b>
Support	44	44			+3	+1
Maintenance/ Technical	4	4				
<b>General Support</b>	<b>49</b>	<b>49</b>			<b>+3</b>	<b>+1</b>
Health Care Assistants	157	163	+6	+3.6%	-2	-6
Care, other	22	22			+1	+1
<b>Patient &amp; Client Care</b>	<b>180</b>	<b>185</b>	<b>+6</b>	<b>+3.2%</b>	<b>-1</b>	<b>-5</b>

## Daughters of Charity, Roscrea

Aug 2020 (Dec 2019 figure: 290)	WTE Jul 2020	WTE Aug 2020	WTE change since Jul 20	% change since Jul 20	WTE change since Dec 19	WTE change since Aug 19
<b>Overall</b>	<b>289</b>	<b>287</b>	<b>-2</b>	<b>-0.7%</b>	<b>-3</b>	<b>-4</b>
Nurse/ Midwife Manager	16	15	-1	-6.4%	-1	-1
Staff Nurse/ Staff Midwife	18	18				+0
Nursing/ Midwifery other	1	1				
<b>Nursing &amp; Midwifery</b>	<b>35</b>	<b>34</b>	<b>-1</b>	<b>-2.9%</b>	<b>-1</b>	<b>-1</b>
Therapy Professions	2	2			+0	+1
Social Care	24	25	+1	+4.2%	+6	+6
Social Workers	1	1				
Psychologists	1	1				
<b>Health &amp; Social Care Professionals</b>	<b>28</b>	<b>29</b>	<b>+1</b>	<b>+3.6%</b>	<b>+6</b>	<b>+6</b>
Management (VIII & above)	1	1				
Administrative/ Supervisory (V to VII)	7	7				
Clerical (III & IV)	7	7			+0	
<b>Management &amp; Administrative</b>	<b>15</b>	<b>15</b>			<b>+0</b>	
Support	4	4				-1
Maintenance/ Technical	5	5			-1	-1
<b>General Support</b>	<b>9</b>	<b>9</b>			<b>-1</b>	<b>-2</b>
Health Care Assistants	201	199	-2	-1.0%	-4	-2
Care, other	2	2			-4	-5
<b>Patient &amp; Client Care</b>	<b>203</b>	<b>201</b>	<b>-2</b>	<b>-1.0%</b>	<b>-7</b>	<b>-7</b>

## Kare, Newbridge, Co Kildare

Aug 2020 (Dec 2019 figure: 360)	WTE Jul 2020	WTE Aug 2020	WTE change since Jul 20	% change since Jul 20	WTE change since Dec 19	WTE change since Aug 19
<b>Overall</b>	<b>335</b>	<b>347</b>	<b>+12</b>	<b>+3.6%</b>	<b>-13</b>	<b>+4</b>
Nurse/ Midwife Manager	8	7	-1	-12.0%	-5	-5
Staff Nurse/ Staff Midwife	22	23	+1	+3.6%	+0	+1
<b>Nursing &amp; Midwifery</b>	<b>30</b>	<b>30</b>	<b>-0</b>	<b>-0.7%</b>	<b>-4</b>	<b>-4</b>
Therapy Professions	13	13			-2	-1
Social Care	59	61	+2	+3.0%	+0	+2
Social Workers	4	4				-0
Psychologists	5	6	+0	+4.6%	+1	+2
<b>Health &amp; Social Care Professionals</b>	<b>81</b>	<b>83</b>	<b>+2</b>	<b>+2.5%</b>	<b>-1</b>	<b>+3</b>
Management (VIII & above)	5	5			-1	-1
Administrative/ Supervisory (V to VII)	13	13	+0	+1.4%	+1	+1
Clerical (III & IV)	14	14			+2	+3
<b>Management &amp; Administrative</b>	<b>31</b>	<b>32</b>	<b>+0</b>	<b>+0.6%</b>	<b>+2</b>	<b>+3</b>
Support	1	1			-0	+0
<b>General Support</b>	<b>1</b>	<b>1</b>			<b>-0</b>	<b>+0</b>
Health Care Assistants	84	94	+9	+11.2%	-7	-8
Care, other	106	106	+1	+0.5%	-3	+11
<b>Patient &amp; Client Care</b>	<b>190</b>	<b>200</b>	<b>+10</b>	<b>+5.3%</b>	<b>-10</b>	<b>+2</b>

### Muiriosa Foundation, Laois/Offaly

Aug 2020 (Dec 2019 figure: 302)	WTE Jul 2020	WTE Aug 2020	WTE change since Jul 20	% change since Jul 20	WTE change since Dec 19	WTE change since Aug 19
<b>Overall</b>	<b>291</b>	<b>304</b>	<b>+13</b>	<b>+4.4%</b>	<b>+2</b>	<b>-1</b>
Nurse/ Midwife Manager	16	15	-1	-6.3%	-1	-1
Staff Nurse/ Staff Midwife	27	28	+1	+3.4%	+2	+0
<b>Nursing &amp; Midwifery</b>	<b>43</b>	<b>43</b>	<b>-0</b>	<b>-0.1%</b>	<b>+1</b>	<b>-1</b>
Social Care	97	102	+5	+4.9%	+7	+7
Social Workers	4	4	-0	-2.2%	-0	-0
Psychologists	1	1				
H&SC, Other	1	1				-0
<b>Health &amp; Social Care Professionals</b>	<b>103</b>	<b>107</b>	<b>+5</b>	<b>+4.6%</b>	<b>+7</b>	<b>+7</b>
Management (VIII & above)	1	2	+1	+100.0%	+1	+1
Administrative/ Supervisory (V to VII)	5	5			-0	-0
Clerical (III & IV)	11	11	+0	+0.9%	+0	-1
<b>Management &amp; Administrative</b>	<b>17</b>	<b>18</b>	<b>+1</b>	<b>+6.5%</b>	<b>+1</b>	<b>-0</b>
Support	1	1	-0	-0.8%	+0	+0
Maintenance/ Technical	2	2				
<b>General Support</b>	<b>3</b>	<b>3</b>	<b>-0</b>	<b>-0.3%</b>	<b>+0</b>	<b>+0</b>
Health Care Assistants	96	104	+8	+8.6%	-5	-5
Care, other	29	28	-1	-3.8%	-2	-1
<b>Patient &amp; Client Care</b>	<b>125</b>	<b>132</b>	<b>+7</b>	<b>+5.7%</b>	<b>-7</b>	<b>-6</b>

### Muiriosa Foundation, Longford/Westmeath

Aug 2020 (Dec 2019 figure: 270)	WTE Jul 2020	WTE Aug 2020	WTE change since Jul 20	% change since Jul 20	WTE change since Dec 19	WTE change since Aug 19
<b>Overall</b>	<b>269</b>	<b>279</b>	<b>+10</b>	<b>+3.6%</b>	<b>+9</b>	<b>+8</b>
Nurse/ Midwife Manager	10	9	-0	-0.3%	+0	+0
Staff Nurse/ Staff Midwife	5	4	-0	-8.7%	-1	-1
<b>Nursing &amp; Midwifery</b>	<b>14</b>	<b>14</b>	<b>-0</b>	<b>-3.0%</b>	<b>-1</b>	<b>-1</b>
Therapy Professions	3	3				
Social Care	96	99	+2	+2.6%	+5	+2
Social Workers	4	4			+1	+2
Psychologists	2	2	-0	-2.5%	-0	-0
H&SC, Other	3	3			-0	-0
<b>Health &amp; Social Care Professionals</b>	<b>108</b>	<b>110</b>	<b>+2</b>	<b>+2.3%</b>	<b>+5</b>	<b>+3</b>
Administrative/ Supervisory (V to VII)	5	5	-0	-2.0%	+1	+1
Clerical (III & IV)	10	10	-0	-0.5%	-0	+1
<b>Management &amp; Administrative</b>	<b>15</b>	<b>15</b>	<b>-0</b>	<b>-1.0%</b>	<b>+1</b>	<b>+2</b>
Support	1	1				
Maintenance/ Technical	3	3				
<b>General Support</b>	<b>4</b>	<b>4</b>				
Health Care Assistants	112	120	+8	+6.8%	+5	+6
Care, other	17	17	+0	+1.1%	-1	-1
<b>Patient &amp; Client Care</b>	<b>129</b>	<b>136</b>	<b>+8</b>	<b>+6.0%</b>	<b>+4</b>	<b>+4</b>

Aug 2020 (Dec 2019 figure: 334)	WTE Jul 2020	WTE Aug 2020	WTE change since Jul 20	% change since Jul 20	WTE change since Dec 19	WTE change since Aug 19
<b>Overall</b>	<b>344</b>	<b>342</b>	<b>-2</b>	<b>-0.6%</b>	<b>+9</b>	<b>+9</b>
Nurse/ Midwife Manager	14	14	-0	-2.2%	-4	-5
Nurse/ Midwife Specialist & AN/MP	1	1				
Staff Nurse/ Staff Midwife	23	23	-1	-3.6%	-1	-3
Pre-registration Nurse/ Midwife Intern				-100.0%		-1
Pre-registration Nurse Intern (COVID-19)	9	8	-1	-13.3%	+8	+8
Nursing/ Midwifery Student	9	8	-1	-13.3%	+8	+6
Nursing/ Midwifery other	7	6	-1	-19.3%	+0	+0
<b>Nursing &amp; Midwifery</b>	<b>55</b>	<b>51</b>	<b>-4</b>	<b>-6.8%</b>	<b>+3</b>	<b>-1</b>
Therapy Professions	7	7			-1	-1
Social Care	92	92	-0	-0.5%	+3	+7
Social Workers	2	2				-0
Psychologists	2	2	+0	+1.2%		+0
H&SC, Other	3	3				+1
<b>Health &amp; Social Care Professionals</b>	<b>106</b>	<b>106</b>	<b>-0</b>	<b>-0.4%</b>	<b>+2</b>	<b>+8</b>
Management (VIII & above)	5	5			+2	+2
Administrative/ Supervisory (V to VII)	14	14			+0	
Clerical (III & IV)	14	14	-1	-4.2%	+0	-0
<b>Management &amp; Administrative</b>	<b>33</b>	<b>32</b>	<b>-1</b>	<b>-1.8%</b>	<b>+2</b>	<b>+2</b>
Support	14	14	+0	+0.4%	-2	-3
Maintenance/ Technical	5	5				
<b>General Support</b>	<b>19</b>	<b>19</b>	<b>+0</b>	<b>+0.3%</b>	<b>-2</b>	<b>-3</b>
Health Care Assistants	124	126	+2	+1.9%	+3	+4
Care, other	8	8	+0	+2.0%	+0	-1
<b>Patient &amp; Client Care</b>	<b>132</b>	<b>134</b>	<b>+2</b>	<b>+1.9%</b>	<b>+3</b>	<b>+3</b>

# Peamount Hospital (Newcastle)

Aug 2020 (Dec 2019 figure: 486)	WTE Jul 2020	WTE Aug 2020	WTE change since Jul 20	% change since Jul 20	WTE change since Dec 19	WTE change since Aug 19
<b>Overall</b>	<b>526</b>	<b>531</b>	<b>+5</b>	<b>+0.9%</b>	<b>+44</b>	<b>+38</b>
Registrars	2	2				+0
SHO/ Interns	7	7	-1	-7.0%	-0	-0
<b>Medical &amp; Dental</b>	<b>9</b>	<b>9</b>	<b>-1</b>	<b>-5.5%</b>	<b>-0</b>	<b>+0</b>
Nurse/ Midwife Manager	30	30	-0	-0.2%	+4	+3
Nurse/ Midwife Specialist & AN/MP		1	+1	-100.0%	-1	-1
Staff Nurse/ Staff Midwife	90	91	+1	+0.9%	+9	+6
<i>Nursing Education/Clinical</i>		1	+1	-100.0%	+1	+1
Nursing/ Midwifery other		1	+1	-100.0%	+1	+1
<b>Nursing &amp; Midwifery</b>	<b>120</b>	<b>123</b>	<b>+3</b>	<b>+2.2%</b>	<b>+13</b>	<b>+9</b>
Therapy Professions	39	39	-0	-1.1%	+10	+11
Health Science/ Diagnostics	3	3				
Social Care	5	4	-0	-10.3%	+3	+2
Social Workers	6	6			+1	+1
Pharmacy	5	4	-2	-30.7%	-1	-0
<b>Health &amp; Social Care Professionals</b>	<b>59</b>	<b>56</b>	<b>-3</b>	<b>-4.4%</b>	<b>+13</b>	<b>+14</b>
Management (VIII & above)	4	4				
Administrative/ Supervisory (V to VII)	18	18	+0	+2.5%	+4	+3
Clerical (III & IV)	18	19	+1	+4.0%	-1	-2
<b>Management &amp; Administrative</b>	<b>40</b>	<b>41</b>	<b>+1</b>	<b>+2.9%</b>	<b>+3</b>	<b>+1</b>
Support	47	46	-2	-3.4%	-1	-3
Maintenance/ Technical	9	10	+1	+5.6%	+2	+2
<b>General Support</b>	<b>56</b>	<b>55</b>	<b>-1</b>	<b>-2.0%</b>	<b>+1</b>	<b>-1</b>
Health Care Assistants	238	243	+5	+2.2%	+15	+16
Care, other	3	3			-0	+0
<b>Patient &amp; Client Care</b>	<b>241</b>	<b>247</b>	<b>+5</b>	<b>+2.2%</b>	<b>+15</b>	<b>+16</b>

Stewart's Hospital, (Palmerstown)

Aug 2020 (Dec 2019 figure: 852)	WTE Jul 2020	WTE Aug 2020	WTE change since Jul 20	% change since Jul 20	WTE change since Dec 19	WTE change since Aug 19
<b>Overall</b>	<b>863</b>	<b>866</b>	<b>+3</b>	<b>+0.4%</b>	<b>+14</b>	<b>-6</b>
Consultants	0	0				
Registrars				-100.0%		
<b>Medical &amp; Dental</b>	<b>0</b>	<b>0</b>				
Nurse/ Midwife Manager	32	32			-4	-6
Staff Nurse/ Staff Midwife	74	74	-0	-0.3%	+1	+2
<i>Pre-registration Nurse/ Midwife Intern</i>				-100.0%		-7
<i>Pre-registration Nurse Intern (COVID-19)</i>	15	15			+15	+15
Nursing/ Midwifery Student	15	15			+15	+8
Nursing/ Midwifery other	1	1				
<b>Nursing &amp; Midwifery</b>	<b>121</b>	<b>121</b>	<b>-0</b>	<b>-0.2%</b>	<b>+12</b>	<b>+4</b>
Therapy Professions	14	14	-1	-3.5%	-2	-1
Social Care	13	13			+3	+3
Social Workers	6	6			+1	+1
Psychologists	4	4			-1	-1
<b>Health &amp; Social Care Professionals</b>	<b>37</b>	<b>36</b>	<b>-1</b>	<b>-1.4%</b>	<b>+1</b>	<b>+2</b>
Management (VIII & above)	11	12	+1	+9.1%	+1	
Administrative/ Supervisory (V to VII)	17	17			+3	-1
Clerical (III & IV)	22	22	-0	-2.1%	-2	-2
<b>Management &amp; Administrative</b>	<b>50</b>	<b>51</b>	<b>+1</b>	<b>+1.1%</b>	<b>+2</b>	<b>-3</b>
Support	57	57	-0	-0.8%	-0	-2
Maintenance/ Technical	4	6	+2	+50.0%	+1	+1
<b>General Support</b>	<b>61</b>	<b>63</b>	<b>+2</b>	<b>+2.5%</b>	<b>+1</b>	<b>-1</b>
Health Care Assistants	479	480	+0	+0.1%	-1	-4
Care, other	114	115	+1	+1.3%	-1	-4
<b>Patient &amp; Client Care</b>	<b>593</b>	<b>595</b>	<b>+2</b>	<b>+0.3%</b>	<b>-2</b>	<b>-8</b>

Aug 2020 (Dec 2019 figure: 647)	WTE Jul 2020	WTE Aug 2020	WTE change since Jul 20	% change since Jul 20	WTE change since Dec 19	WTE change since Aug 19
<b>Overall</b>	<b>645</b>	<b>644</b>	<b>-1</b>	<b>-0.2%</b>	<b>-3</b>	<b>+11</b>
Registrars	1	1				
<b>Medical &amp; Dental</b>	<b>1</b>	<b>1</b>				
Nurse/ Midwife Manager	45	44	-0	-0.5%	+1	+2
Nurse/ Midwife Specialist & AN/MP	4	4	+0	+0.3%	+0	+0
Staff Nurse/ Staff Midwife	145	145	+0	+0.1%	-7	+6
<i>Pre-registration Nurse/ Midwife Intern</i>				-100.0%	-1	-10
<i>Pre-registration Nurse Intern (COVID-19)</i>	21	21	-0	-0.4%	+21	+21
Nursing/ Midwifery Student	21	21	-0	-0.4%	+21	+11
<b>Nursing &amp; Midwifery</b>	<b>215</b>	<b>214</b>	<b>-0</b>	<b>-0.1%</b>	<b>+15</b>	<b>+19</b>
Therapy Professions	3	3				
Social Care	76	78	+2	+2.9%	-1	+1
Social Workers	2	2			-0	-0
Psychologists	1	1				
<b>Health &amp; Social Care Professionals</b>	<b>81</b>	<b>84</b>	<b>+2</b>	<b>+2.7%</b>	<b>-1</b>	<b>+1</b>
Management (VIII & above)	1	1			-0	-1
Administrative/ Supervisory (V to VII)	6	6			-0	-0
Clerical (III & IV)	12	12	-0	-2.2%	+0	+1
<b>Management &amp; Administrative</b>	<b>18</b>	<b>18</b>	<b>-0</b>	<b>-1.4%</b>	<b>+0</b>	<b>-0</b>
Support	21	20	-0	-0.3%	-3	-2
Maintenance/ Technical	3	3	+0	+0.0%	-0	-0
<b>General Support</b>	<b>23</b>	<b>23</b>	<b>-0</b>	<b>-0.3%</b>	<b>-3</b>	<b>-2</b>
Health Care Assistants	273	272	-1	-0.4%	-9	-2
Care, other	34	32	-2	-5.7%	-5	-5
<b>Patient &amp; Client Care</b>	<b>306</b>	<b>303</b>	<b>-3</b>	<b>-1.0%</b>	<b>-14</b>	<b>-6</b>

## St. John of God (IDS)

Aug 2020 (Dec 2019 figure: 456)	WTE Jul 2020	WTE Aug 2020	WTE change since Jul 20	% change since Jul 20	WTE change since Dec 19	WTE change since Aug 19
<b>Overall</b>	<b>448</b>	<b>449</b>	<b>+1</b>	<b>+0.3%</b>	<b>-7</b>	<b>+7</b>
<b>Medical &amp; Dental</b>	<b>1</b>	<b>1</b>				
Nurse/ Midwife Manager	8	8	-0	-2.5%	-0	-2
Staff Nurse/ Staff Midwife	45	46	+1	+1.5%	-1	+1
<b>Nursing &amp; Midwifery</b>	<b>53</b>	<b>54</b>	<b>+0</b>	<b>+0.9%</b>	<b>-1</b>	<b>-1</b>
Therapy Professions	11	11			-2	-1
Social Care	148	150	+2	+1.1%	+4	+5
Social Workers	3	3			-1	
Psychologists	6	7	+0	+5.2%	+2	+1
<b>Health &amp; Social Care Professionals</b>	<b>168</b>	<b>170</b>	<b>+2</b>	<b>+1.2%</b>	<b>+3</b>	<b>+5</b>
Management (VIII & above)	15	15			+0	+0
Administrative/ Supervisory (V to VII)	26	26	-0	-0.8%	-2	-1
Clerical (III & IV)	19	19	+0	+0.4%	-0	+2
<b>Management &amp; Administrative</b>	<b>59</b>	<b>59</b>	<b>-0</b>	<b>-0.2%</b>	<b>-3</b>	<b>+1</b>
Support	12	12	-0	-1.2%	-0	-0
Maintenance/ Technical	5	5			+0	+1
<b>General Support</b>	<b>17</b>	<b>17</b>	<b>-0</b>	<b>-0.8%</b>	<b>+0</b>	<b>+1</b>
Health Care Assistants	16	17	+0	+1.6%	-2	+1
Care, other	133	132	-1	-0.9%	-4	+1
<b>Patient &amp; Client Care</b>	<b>149</b>	<b>148</b>	<b>-1</b>	<b>-0.6%</b>	<b>-7</b>	<b>+2</b>

## St. John of God, Kerry

Aug 2020 (Dec 2019 figure: 315)	WTE Jul 2020	WTE Aug 2020	WTE change since Jul 20	% change since Jul 20	WTE change since Dec 19	WTE change since Aug 19
<b>Overall</b>	<b>313</b>	<b>317</b>	<b>+4</b>	<b>+1.2%</b>	<b>+1</b>	<b>+7</b>
Nurse/ Midwife Manager	15	15	+0	+0.9%	-0	-0
Staff Nurse/ Staff Midwife	47	46	-2	-3.6%	-3	-5
<b>Nursing &amp; Midwifery</b>	<b>63</b>	<b>61</b>	<b>-2</b>	<b>-2.5%</b>	<b>-3</b>	<b>-5</b>
Therapy Professions	3	4	+1	+16.8%	+0	+0
Social Care	44	46	+2	+3.8%	+0	+2
Social Workers	1	1	+0	+47.1%		+0
Psychologists	1	1			-1	-1
<b>Health &amp; Social Care Professionals</b>	<b>49</b>	<b>51</b>	<b>+3</b>	<b>+5.2%</b>	<b>-0</b>	<b>+2</b>
Management (VIII & above)	1		-1	-100.0%	-1	-1
Administrative/ Supervisory (V to VII)	7	8	+1	+13.7%	+1	+1
Clerical (III & IV)	10	9	-0	-2.3%	-0	-0
<b>Management &amp; Administrative</b>	<b>18</b>	<b>18</b>	<b>-0</b>	<b>-1.2%</b>	<b>-0</b>	<b>-0</b>
<b>General Support</b>	<b>29</b>	<b>29</b>	<b>-0</b>	<b>-0.3%</b>	<b>-1</b>	<b>-0</b>
Health Care Assistants	113	116	+3	+2.5%	+11	+13
Care, other	41	41	+0	+0.7%	-5	-1
<b>Patient &amp; Client Care</b>	<b>155</b>	<b>158</b>	<b>+3</b>	<b>+2.0%</b>	<b>+6</b>	<b>+11</b>



# St. John of God Liffey Services

Aug 2020 (Dec 2019 figure: 787)	WTE Jul 2020	WTE Aug 2020	WTE change since Jul 20	% change since Jul 20	WTE change since Dec 19	WTE change since Aug 19
<b>Overall</b>	<b>768</b>	<b>766</b>	<b>-1</b>	<b>-0.2%</b>	<b>-21</b>	<b>+31</b>
Registrars	1	1				
<b>Medical &amp; Dental</b>	<b>1</b>	<b>1</b>				
Nurse/ Midwife Manager	23	23	-0	-0.1%	+3	+0
Nurse/ Midwife Specialist & AN/MP	1	1				
Staff Nurse/ Staff Midwife	89	87	-1	-1.2%	-3	+8
<b>Nursing &amp; Midwifery</b>	<b>113</b>	<b>111</b>	<b>-1</b>	<b>-1.0%</b>	<b>+1</b>	<b>+8</b>
Therapy Professions	17	17	-0	-0.7%	+2	+2
Social Care	252	255	+4	+1.5%	+3	+16
Social Workers	6	6			-1	-1
Psychologists	7	7	+0	+0.6%	+1	+1
<b>Health &amp; Social Care Professionals</b>	<b>282</b>	<b>285</b>	<b>+4</b>	<b>+1.3%</b>	<b>+5</b>	<b>+17</b>
Management (VIII & above)	6	6			-0	-0
Administrative/ Supervisory (V to VII)	10	10			-1	+1
Clerical (III & IV)	19	18	-1	-3.4%	+0	-1
<b>Management &amp; Administrative</b>	<b>35</b>	<b>34</b>	<b>-1</b>	<b>-1.9%</b>	<b>-1</b>	<b>-0</b>
Support	30	28	-2	-6.0%	-7	-6
Maintenance/ Technical	13	13	+0	+0.3%	+1	+1
<b>General Support</b>	<b>43</b>	<b>41</b>	<b>-2</b>	<b>-4.0%</b>	<b>-6</b>	<b>-5</b>
Health Care Assistants	158	154	-3	-2.1%	-18	+4
Care, other	137	139	+2	+1.3%	-3	+8
<b>Patient &amp; Client Care</b>	<b>295</b>	<b>293</b>	<b>-1</b>	<b>-0.5%</b>	<b>-20</b>	<b>+12</b>

Aug 2020 (Dec 2019 figure: 1,431)	WTE Jul 2020	WTE Aug 2020	WTE change since Jul 20	% change since Jul 20	WTE change since Dec 19	WTE change since Aug 19
<b>Overall</b>	<b>1,376</b>	<b>1,389</b>	<b>+13</b>	<b>+0.9%</b>	<b>-42</b>	<b>+32</b>
Consultants	6	6			-2	-1
Registrars	2	1	-1	-33.8%	-3	-3
Medical/ Dental, other	4	4				
<b>Medical &amp; Dental</b>	<b>12</b>	<b>11</b>	<b>-1</b>	<b>-4.4%</b>	<b>-5</b>	<b>-4</b>
Nurse/ Midwife Manager	87	87	-0	-0.1%	+3	+5
Staff Nurse/ Staff Midwife	152	155	+3	+2.2%	-7	-4
<b>Nursing &amp; Midwifery</b>	<b>238</b>	<b>242</b>	<b>+3</b>	<b>+1.4%</b>	<b>-4</b>	<b>+1</b>
Therapy Professions	55	53	-2	-4.2%	+1	+8
Social Care	527	539	+12	+2.2%	+14	+33
Social Workers	21	20	-1	-4.6%	-0	+1
Psychologists	19	18	-0	-1.0%		+1
H&SC, Other	10	10			+0	-0
<b>Health &amp; Social Care Professionals</b>	<b>632</b>	<b>640</b>	<b>+8</b>	<b>+1.3%</b>	<b>+15</b>	<b>+43</b>
Management (VIII & above)	22	22			+0	+2
Administrative/ Supervisory (V to VII)	42	41	-1	-2.4%	-2	+4
Clerical (III & IV)	51	51	+0	+0.4%	-3	+4
<b>Management &amp; Administrative</b>	<b>114</b>	<b>113</b>	<b>-1</b>	<b>-0.7%</b>	<b>-5</b>	<b>+10</b>
Support	67	64	-3	-4.3%	-32	-10
Maintenance/ Technical	12	12			-0	-1
<b>General Support</b>	<b>79</b>	<b>76</b>	<b>-3</b>	<b>-3.7%</b>	<b>-32</b>	<b>-11</b>
Health Care Assistants	278	283	+5	+1.9%	-11	-8
Care, other	24	24	+0	+0.9%	-0	+0
<b>Patient &amp; Client Care</b>	<b>301</b>	<b>307</b>	<b>+6</b>	<b>+1.9%</b>	<b>-11</b>	<b>-8</b>

## St. Patrick's, Kilkenny

Aug 2020 (Dec 2019 figure: 279)	WTE Jul 2020	WTE Aug 2020	WTE change since Jul 20	% change since Jul 20	WTE change since Dec 19	WTE change since Aug 19
<b>Overall</b>	<b>288</b>	<b>290</b>	<b>+2</b>	<b>+0.7%</b>	<b>+11</b>	<b>-2</b>
Nurse/ Midwife Manager	11	11			+1	-2
Staff Nurse/ Staff Midwife	25	26	+1	+2.9%	+1	-2
<b>Nursing &amp; Midwifery</b>	<b>36</b>	<b>37</b>	<b>+1</b>	<b>+2.0%</b>	<b>+1</b>	<b>-4</b>
Social Care	27	28	+1	+2.5%	-7	-8
Social Workers				-100.0%	-2	-1
H&SC, Other	3	3			-0	-1
<b>Health &amp; Social Care Professionals</b>	<b>30</b>	<b>31</b>	<b>+1</b>	<b>+2.3%</b>	<b>-9</b>	<b>-10</b>
Executive Management	1	1			+1	+1
Management (VIII & above)	1	1			+1	+1
Administrative/ Supervisory (V to VII)	6	6			-1	-1
Clerical (III & IV)	13	12	-0	-1.0%	-1	-1
<b>Management &amp; Administrative</b>	<b>19</b>	<b>19</b>	<b>-0</b>	<b>-0.7%</b>	<b>-1</b>	<b>-1</b>
Support	3	3	-0	-10.3%	-4	-8
Maintenance/ Technical	3	3				
<b>General Support</b>	<b>6</b>	<b>6</b>	<b>-0</b>	<b>-5.2%</b>	<b>-4</b>	<b>-8</b>
<b>Patient &amp; Client Care</b>	<b>196</b>	<b>197</b>	<b>+1</b>	<b>+0.6%</b>	<b>+24</b>	<b>+22</b>

## Sunbeam House Services

Aug 2020 (Dec 2019 figure: 449)	WTE Jul 2020	WTE Aug 2020	WTE change since Jul 20	% change since Jul 20	WTE change since Dec 19	WTE change since Aug 19
<b>Overall</b>	<b>433</b>	<b>445</b>	<b>+12</b>	<b>+2.9%</b>	<b>-4</b>	<b>+6</b>
Nurse/ Midwife Manager	3	3			-1	-1
Staff Nurse/ Staff Midwife	28	31	+3	+9.8%	-6	-6
<b>Nursing &amp; Midwifery</b>	<b>31</b>	<b>34</b>	<b>+3</b>	<b>+8.9%</b>	<b>-7</b>	<b>-7</b>
Therapy Professions	1	1				-0
Social Care	165	175	+10	+6.2%	-7	-5
Social Workers	2	1	-1	-42.5%	-1	-1
Psychologists	2	2			+1	+1
H&SC, Other				-100.0%	-1	
<b>Health &amp; Social Care Professionals</b>	<b>170</b>	<b>179</b>	<b>+10</b>	<b>+5.6%</b>	<b>-7</b>	<b>-5</b>
Management (VIII & above)	10	9	-1	-10.0%		
Administrative/ Supervisory (V to VII)	9	11	+1	+13.3%	+2	+2
Clerical (III & IV)	36	35	-1	-2.0%	+11	+10
<b>Management &amp; Administrative</b>	<b>55</b>	<b>54</b>	<b>-0</b>	<b>-0.8%</b>	<b>+13</b>	<b>+12</b>
Support	28	28	+1	+2.3%	+23	+17
Maintenance/ Technical	2	1	-1	-43.5%	-1	+1
<b>General Support</b>	<b>29</b>	<b>29</b>	<b>-0</b>	<b>-0.4%</b>	<b>+22</b>	<b>+18</b>
Health Care Assistants	63	57	-5	-8.2%	-14	-2
Care, other	85	91	+6	+6.9%	-12	-9
<b>Patient &amp; Client Care</b>	<b>147</b>	<b>148</b>	<b>+1</b>	<b>+0.5%</b>	<b>-26</b>	<b>-11</b>

Bros. of Charity, West Region

Aug 2020 (Dec 2019 figure: 1,288)	WTE Jul 2020	WTE Aug 2020	WTE change since Jul 20	% change since Jul 20	WTE change since Dec 19	WTE change since Aug 19
<b>Overall</b>	<b>1,265</b>	<b>1,268</b>	<b>+2</b>	<b>+0.2%</b>	<b>-21</b>	<b>+4</b>
Consultants	2	2				
Registrars	2	2	-0	-9.1%		
<b>Medical &amp; Dental</b>	<b>5</b>	<b>4</b>	<b>-0</b>	<b>-4.3%</b>		
Nurse/ Midwife Manager	67	67	+0	+0.1%	-0	+2
Nurse/ Midwife Specialist & AN/MP	4	4	+0	+0.2%	-1	-1
Staff Nurse/ Staff Midwife	116	118	+2	+1.4%	-2	-2
<i>Pre-registration Nurse Intern (COVID-19)</i>	1	1	+0	+4.2%	+1	+1
Nursing/ Midwifery Student	1	1	+0	+4.2%	+1	+1
<b>Nursing &amp; Midwifery</b>	<b>189</b>	<b>190</b>	<b>+2</b>	<b>+0.9%</b>	<b>-2</b>	<b>+0</b>
Therapy Professions	27	24	-3	-10.9%	-10	-8
Social Care	208	208	-0	-0.1%	+12	+13
Social Workers	26	23	-3	-10.8%	-3	-2
Psychologists	12	14	+1	+11.7%	-0	-2
H&SC, Other	13	12	-1	-8.4%	-4	-2
<b>Health &amp; Social Care Professionals</b>	<b>287</b>	<b>281</b>	<b>-6</b>	<b>-2.0%</b>	<b>-4</b>	<b>-0</b>
Management (VIII & above)	13	14	+1	+7.8%	+1	+1
Administrative/ Supervisory (V to VII)	35	35	-0	-0.7%	-0	+2
Clerical (III & IV)	35	36	+0	+0.9%	-2	-3
<b>Management &amp; Administrative</b>	<b>83</b>	<b>84</b>	<b>+1</b>	<b>+1.3%</b>	<b>-1</b>	<b>+0</b>
Support	35	35	+0	+0.2%	-9	-3
Maintenance/ Technical	5	5			+0	+0
<b>General Support</b>	<b>40</b>	<b>40</b>	<b>+0</b>	<b>+0.2%</b>	<b>-9</b>	<b>-3</b>
Health Care Assistants	542	550	+8	+1.5%	+4	+8
Care, other	121	118	-3	-2.6%	-9	-1
<b>Patient &amp; Client Care</b>	<b>662</b>	<b>667</b>	<b>+5</b>	<b>+0.8%</b>	<b>-5</b>	<b>+7</b>

## Social Care Disability Services Employment by Grade Group: Aug 2020

Aug 2020 (Dec 2019 figure: 18,303)	WTE Jul 2020	WTE Aug 2020	WTE change since Jul 20	% change since Jul 20	WTE change since Dec 19	WTE change since Aug 19
<b>Overall</b>	<b>18,419</b>	<b>18,499</b>	<b>+81</b>	<b>+0.4%</b>	<b>+197</b>	<b>+444</b>
Consultant Paediatrics	3	3				
Consultant Psychiatry	19	20	+1	+4.2%	-1	-1
<b>Consultants</b>	<b>22</b>	<b>23</b>	<b>+1</b>	<b>+3.6%</b>	<b>-1</b>	<b>-1</b>
Registrar	4	4	-1	-17.4%	-3	-3
Senior Registrar	3	3			+1	+1
Specialist Registrar	2	2	-0	-6.5%	-2	-2
<b>Registrars</b>	<b>10</b>	<b>9</b>	<b>-1</b>	<b>-9.5%</b>	<b>-4</b>	<b>-4</b>
<b>SHO/ Interns</b>	<b>9</b>	<b>8</b>	<b>-1</b>	<b>-14.6%</b>	<b>+1</b>	<b>+1</b>
<b>Medical/ Dental, other</b>	<b>14</b>	<b>15</b>	<b>+1</b>	<b>+4.6%</b>	<b>+1</b>	<b>+1</b>
<b>Medical &amp; Dental</b>	<b>56</b>	<b>55</b>	<b>-1</b>	<b>-1.4%</b>	<b>-4</b>	<b>-3</b>
Clinical Nurse/ Midwife Manager	820	818	-3	-0.3%	+7	+7
Director Nursing/Midwifery, Assistant	42	42	-1	-1.2%	+1	+4
Director of Nursing/Midwifery	37	37	+0	+0.1%	-5	-6
<b>Nurse/ Midwife Manager</b>	<b>899</b>	<b>896</b>	<b>-3</b>	<b>-0.4%</b>	<b>+2</b>	<b>+5</b>
Advanced Nurse/ Midwife Practitioner	2	4	+2	+100.0%	+2	+2
Clinical Nurse/ Midwife Specialist	63	61	-2	-3.2%	+1	+2
<b>Nurse/ Midwife Specialist &amp; AN/MP</b>	<b>65</b>	<b>65</b>	<b>+0</b>	<b>+0.0%</b>	<b>+3</b>	<b>+4</b>
Staff Nurse [Intellectual Disability]	1,573	1,564	-8	-0.5%	-33	-51
Staff Nurse [Psychiatric]	56	57	+0	+0.9%	-27	-12
Staff Nurses [General/ Children's]	892	901	+9	+1.0%	+9	+58
<b>Staff Nurse/ Staff Midwife</b>	<b>2,521</b>	<b>2,523</b>	<b>+1</b>	<b>+0.1%</b>	<b>-50</b>	<b>-5</b>
<b>Public Health Nurse</b>	<b>6</b>	<b>7</b>	<b>+0</b>	<b>+7.1%</b>	<b>+0</b>	<b>+1</b>
Pre-registration Nurse/ Midwife Intern	7	15	+8	+120.9%	-13	-52
Pre-registration Nurse Intern (COVID-19)	155	125	-29	-19.0%	+125	+125
Post-registration Nurse/ Midwife Student	4	4	+0	+1.8%	+4	+4
Nursing/ Midwifery awaiting registration	11	11			-3	+11
<b>Nursing/ Midwifery Student</b>	<b>177</b>	<b>155</b>	<b>-21</b>	<b>-12.0%</b>	<b>+113</b>	<b>+89</b>
Nursing Education/Clinical	24	24	-0	-1.4%	+2	+2
Other Nursing/ Midwifery	1	1				
<b>Nursing/ Midwifery other</b>	<b>25</b>	<b>25</b>	<b>-0</b>	<b>-1.3%</b>	<b>+2</b>	<b>+2</b>
<b>Nursing &amp; Midwifery</b>	<b>3,693</b>	<b>3,670</b>	<b>-23</b>	<b>-0.6%</b>	<b>+71</b>	<b>+96</b>
Dietitians	19	20	+1	+3.7%	+1	+5
Occupational Therapists	273	271	-2	-0.8%	+7	+24
Physiotherapists	189	187	-2	-1.2%	-2	+5
Speech & Language Therapists	301	301	+1	+0.2%	+9	+12
<b>Therapy Professions</b>	<b>782</b>	<b>779</b>	<b>-3</b>	<b>-0.4%</b>	<b>+14</b>	<b>+45</b>
Clinical Engineering	12	13	+1	+8.0%	-0	-0
Clinical Measurement	2	2			+1	+1
Medical Laboratory	4	4				
Phlebotomists				-100.0%	-1	-1
Radiographers	1	1				
<b>Health Science/ Diagnostics</b>	<b>19</b>	<b>20</b>	<b>+1</b>	<b>+5.1%</b>	<b>-0</b>	<b>-0</b>
<b>Social Care</b>	<b>2,618</b>	<b>2,669</b>	<b>+51</b>	<b>+2.0%</b>	<b>+74</b>	<b>+101</b>
<b>Social Workers</b>	<b>221</b>	<b>214</b>	<b>-7</b>	<b>-3.2%</b>	<b>-5</b>	<b>+2</b>
<b>Psychologists</b>	<b>212</b>	<b>213</b>	<b>+0</b>	<b>+0.0%</b>	<b>+8</b>	<b>+5</b>
<b>Pharmacy</b>	<b>8</b>	<b>6</b>	<b>-2</b>	<b>-21.3%</b>	<b>-1</b>	<b>-0</b>
Counsellor Therapists	21	20	-0	-1.4%	+2	+4
Other Health & Social Care	50	50	-0	-0.4%	-1	+0

Aug 2020 (Dec 2019 figure: 18,303)	WTE Jul 2020	WTE Aug 2020	WTE change since Jul 20	% change since Jul 20	WTE change since Dec 19	WTE change since Aug 19
<b>Overall</b>	<b>18,419</b>	<b>18,499</b>	<b>+81</b>	<b>+0.4%</b>	<b>+197</b>	<b>+444</b>
Play Therapists/ Specialists	13	12	-1	-6.3%	-3	-4
<b>H&amp;SC, Other</b>	<b>83</b>	<b>82</b>	<b>-1</b>	<b>-1.5%</b>	<b>-3</b>	<b>+0</b>
<b>Health &amp; Social Care Professionals</b>	<b>3,944</b>	<b>3,983</b>	<b>+39</b>	<b>+1.0%</b>	<b>+89</b>	<b>+153</b>
Executive Management	35	35			+4	+6
Senior Management (VIII & GM)	155	162	+6	+4.1%	+13	+10
<b>Management (VIII &amp; above)</b>	<b>190</b>	<b>197</b>	<b>+6</b>	<b>+3.3%</b>	<b>+17</b>	<b>+16</b>
Middle Management (V-VII)	485	488	+3	+0.6%	+24	+38
Other Administrative	14	15	+1	+7.2%	-0	-1
<b>Administrative/ Supervisory (V to VII)</b>	<b>499</b>	<b>503</b>	<b>+4</b>	<b>+0.8%</b>	<b>+24</b>	<b>+37</b>
<b>Clerical (III &amp; IV)</b>	<b>680</b>	<b>677</b>	<b>-3</b>	<b>-0.5%</b>	<b>+17</b>	<b>+37</b>
<b>Management &amp; Administrative</b>	<b>1,369</b>	<b>1,376</b>	<b>+7</b>	<b>+0.5%</b>	<b>+57</b>	<b>+90</b>
Catering	106	103	-2	-2.0%	+6	+2
Household Services	422	417	-5	-1.2%	-2	-19
Other Labs & Associated	1	1	+0	+27.0%	+0	+0
Other Support	152	152	-1	-0.6%	-37	-8
Portering	26	26	-1	-2.5%	-2	+0
<b>Support</b>	<b>708</b>	<b>699</b>	<b>-9</b>	<b>-1.2%</b>	<b>-35</b>	<b>-23</b>
Maintenance	123	121	-2	-1.7%	+5	+4
Technical Services	7	9	+2	+28.2%	+1	+2
<b>Maintenance/ Technical</b>	<b>130</b>	<b>130</b>	<b>-0</b>	<b>-0.0%</b>	<b>+6</b>	<b>+6</b>
<b>General Support</b>	<b>838</b>	<b>829</b>	<b>-9</b>	<b>-1.0%</b>	<b>-29</b>	<b>-17</b>
HCA, Nurse's Aide, etc.	6,820	6,879	+59	+0.9%	+62	+91
Health & Social Care Assistants	13	12	-2	-12.0%	+2	+3
<b>Health Care Assistants</b>	<b>6,833</b>	<b>6,890</b>	<b>+57</b>	<b>+0.8%</b>	<b>+64</b>	<b>+93</b>
<b>Home Help</b>	<b>101</b>	<b>102</b>	<b>+1</b>	<b>+1.4%</b>	<b>-6</b>	<b>-6</b>
<b>Care, other</b>	<b>1,585</b>	<b>1,593</b>	<b>+8</b>	<b>+0.5%</b>	<b>-46</b>	<b>+38</b>
<b>Patient &amp; Client Care</b>	<b>8,519</b>	<b>8,586</b>	<b>+67</b>	<b>+0.8%</b>	<b>+12</b>	<b>+125</b>

## Employment by WTE, Headcount, Gender, Full-Time /Part-Time etc.: Aug 2020

Social Care Disability Services Staff Group	WTE	Headcount	WTE: no.	% Male	% female	Male WTE: no.	Female WTE: no.	% Total Perm	% Male Perm	% Female Perm	% Total Full Time	% Total Part Time	% Male FT	% Female FT
<b>Overall</b>	<b>18,499</b>	<b>21,833</b>	<b>1.18</b>	<b>19.1%</b>	<b>80.9%</b>	<b>1.11</b>	<b>1.20</b>	<b>87.4%</b>	<b>86.3%</b>	<b>87.7%</b>	<b>56.9%</b>	<b>43.1%</b>	<b>69.9%</b>	<b>53.9%</b>
Consultant Paediatrics	3	6	1.97	16.7%	83.3%	1.82	2.00	66.7%	66.7%	80.0%	33.3%	66.7%	100.0%	20.0%
Consultant Psychiatry	20	27	1.34	33.3%	66.7%	1.37	1.33	81.5%	81.5%	83.3%	63.0%	37.0%	77.8%	55.6%
<b>Consultants</b>	<b>23</b>	<b>33</b>	<b>1.43</b>	<b>30.3%</b>	<b>69.7%</b>	<b>1.40</b>	<b>1.44</b>	<b>78.8%</b>	<b>70.0%</b>	<b>82.6%</b>	<b>57.6%</b>	<b>42.4%</b>	<b>80.0%</b>	<b>47.8%</b>
Registrar	4	4	1.10	50.0%	50.0%	1.00	1.23	0.0%	0.0%	0.0%	100.0%	0.0%	100.0%	100.0%
Senior Registrar	3	3	1.00		100.0%		1.00	0.0%	0.0%	0.0%	100.0%	0.0%		100.0%
Specialist Registrar	2	2	1.00	50.0%	50.0%	1.00	1.00	0.0%	0.0%	0.0%	100.0%	0.0%	100.0%	100.0%
<b>Registrars</b>	<b>9</b>	<b>9</b>	<b>1.04</b>	<b>33.3%</b>	<b>66.7%</b>	<b>1.00</b>	<b>1.07</b>	<b>0.0%</b>	<b>0.0%</b>	<b>0.0%</b>	<b>100.0%</b>	<b>0.0%</b>	<b>100.0%</b>	<b>100.0%</b>
<b>SHO/ Interns</b>	<b>8</b>	<b>8</b>	<b>1.01</b>	<b>50.0%</b>	<b>50.0%</b>	<b>1.01</b>	<b>1.01</b>	<b>0.0%</b>	<b>0.0%</b>	<b>0.0%</b>	<b>100.0%</b>	<b>0.0%</b>	<b>100.0%</b>	<b>100.0%</b>
<b>Medical/ Dental, other</b>	<b>15</b>	<b>22</b>	<b>1.46</b>	<b>45.5%</b>	<b>54.5%</b>	<b>1.27</b>	<b>1.67</b>	<b>90.9%</b>	<b>80.0%</b>	<b>100.0%</b>	<b>36.4%</b>	<b>63.6%</b>	<b>50.0%</b>	<b>25.0%</b>
<b>Medical &amp; Dental</b>	<b>55</b>	<b>72</b>	<b>1.31</b>	<b>37.5%</b>	<b>62.5%</b>	<b>1.23</b>	<b>1.37</b>	<b>63.9%</b>	<b>55.6%</b>	<b>68.9%</b>	<b>61.1%</b>	<b>38.9%</b>	<b>74.1%</b>	<b>53.3%</b>
Clinical Nurse/ Midwife Manager	818	872	1.07	12.6%	87.4%	1.01	1.07	93.0%	93.0%	93.3%	81.4%	18.6%	98.2%	79.0%
Director Nursing/Midwifery, Assistant	42	44	1.06	20.5%	79.5%	1.13	1.04	95.5%	95.5%	94.3%	93.2%	6.8%	100.0%	91.4%
Director of Nursing/Midwifery	37	37	1.00	8.1%	91.9%	1.00	1.00	100.0%	100.0%	100.0%	100.0%	0.0%	100.0%	100.0%
<b>Nurse/ Midwife Manager</b>	<b>896</b>	<b>953</b>	<b>1.06</b>	<b>12.8%</b>	<b>87.2%</b>	<b>1.02</b>	<b>1.07</b>	<b>93.4%</b>	<b>91.8%</b>	<b>93.6%</b>	<b>82.7%</b>	<b>17.3%</b>	<b>98.4%</b>	<b>80.4%</b>
Advanced Nurse/ Midwife Practitioner	4	4	1.00	50.0%	50.0%	1.00	1.00	100.0%	100.0%	100.0%	100.0%	0.0%	100.0%	100.0%
Clinical Nurse/ Midwife Specialist	61	71	1.17	4.2%	95.8%	1.01	1.18	98.6%	98.6%	98.5%	54.9%	45.1%	100.0%	52.9%
<b>Nurse/ Midwife Specialist &amp; AN/MP</b>	<b>65</b>	<b>75</b>	<b>1.16</b>	<b>6.7%</b>	<b>93.3%</b>	<b>1.01</b>	<b>1.17</b>	<b>98.7%</b>	<b>100.0%</b>	<b>98.6%</b>	<b>57.3%</b>	<b>42.7%</b>	<b>100.0%</b>	<b>54.3%</b>
Staff Nurse [Intellectual Disability]	1,564	1,829	1.17	8.5%	91.5%	1.09	1.18	95.3%	95.3%	95.3%	63.1%	36.9%	83.3%	61.3%
Staff Nurse [Psychiatric]	57	71	1.25	15.5%	84.5%	1.20	1.25	85.9%	85.9%	90.0%	60.6%	39.4%	63.6%	60.0%
Staff Nurses [General/ Children's]	901	1,047	1.16	12.1%	87.9%	1.06	1.18	95.2%	95.2%	95.2%	65.9%	34.1%	85.8%	63.2%
<b>Staff Nurse/ Staff Midwife</b>	<b>2,523</b>	<b>2,947</b>	<b>1.17</b>	<b>10.0%</b>	<b>90.0%</b>	<b>1.08</b>	<b>1.18</b>	<b>95.0%</b>	<b>94.2%</b>	<b>95.1%</b>	<b>64.1%</b>	<b>35.9%</b>	<b>83.7%</b>	<b>61.9%</b>
<b>Public Health Nurse</b>	<b>7</b>	<b>8</b>	<b>1.21</b>	<b>12.5%</b>	<b>87.5%</b>	<b>1.00</b>	<b>1.25</b>	<b>100.0%</b>	<b>100.0%</b>	<b>100.0%</b>	<b>50.0%</b>	<b>50.0%</b>	<b>100.0%</b>	<b>42.9%</b>
<b>Nursing/ Midwifery Student</b>	<b>155</b>	<b>167</b>	<b>1.07</b>	<b>4.8%</b>	<b>95.2%</b>	<b>1.00</b>	<b>1.08</b>	<b>9.6%</b>	<b>0.0%</b>	<b>10.1%</b>	<b>88.6%</b>	<b>11.4%</b>	<b>100.0%</b>	<b>88.1%</b>
Nursing Education/Clinical	24	28	1.19		100.0%		1.19	92.9%	92.9%	92.9%	75.0%	25.0%		75.0%
Other Nursing/ Midwifery	1	1	1.00	100.0%		1.00		100.0%	100.0%		100.0%	0.0%	100.0%	
<b>Nursing/ Midwifery other</b>	<b>25</b>	<b>29</b>	<b>1.18</b>	<b>3.4%</b>	<b>96.6%</b>	<b>1.00</b>	<b>1.19</b>	<b>93.1%</b>	<b>100.0%</b>	<b>92.9%</b>	<b>75.9%</b>	<b>24.1%</b>	<b>100.0%</b>	<b>75.0%</b>
<b>Nursing &amp; Midwifery</b>	<b>3,670</b>	<b>4,179</b>	<b>1.14</b>	<b>10.3%</b>	<b>89.7%</b>	<b>1.06</b>	<b>1.15</b>	<b>91.3%</b>	<b>91.9%</b>	<b>91.2%</b>	<b>69.2%</b>	<b>30.8%</b>	<b>88.4%</b>	<b>67.0%</b>

Dietitians	20	25	1.25		100.0%		1.25	84.0%	84.0%	84.0%	60.0%	40.0%		60.0%
Occupational Therapists	271	310	1.14	5.2%	94.8%	1.10	1.15	91.6%	91.6%	91.8%	72.9%	27.1%	81.3%	72.4%
Physiotherapists	187	220	1.18	17.7%	82.3%	1.03	1.22	91.4%	91.4%	90.6%	66.8%	33.2%	92.3%	61.3%
Speech & Language Therapists	301	349	1.16	1.7%	98.3%	1.09	1.16	89.1%	89.1%	89.2%	73.6%	26.4%	83.3%	73.5%
<b>Therapy Professions</b>	<b>779</b>	<b>904</b>	<b>1.16</b>	<b>6.7%</b>	<b>93.3%</b>	<b>1.05</b>	<b>1.17</b>	<b>90.4%</b>	<b>91.8%</b>	<b>90.3%</b>	<b>71.3%</b>	<b>28.7%</b>	<b>88.5%</b>	<b>70.1%</b>
Clinical Engineering	13	13	1.01	84.6%	15.4%	1.01	1.00	84.6%	84.6%	50.0%	92.3%	7.7%	90.9%	100.0%
Clinical Measurement	2	2	1.00	100.0%		1.00		50.0%	50.0%		100.0%	0.0%	100.0%	
Medical Laboratory	4	4	1.00	75.0%	25.0%	1.00	1.00	75.0%	75.0%	0.0%	100.0%	0.0%	100.0%	100.0%
Radiographers	1	1	1.00		100.0%		1.00	100.0%	100.0%	100.0%	100.0%	0.0%		100.0%
<b>Health Science/ Diagnostics</b>	<b>20</b>	<b>20</b>	<b>1.00</b>	<b>80.0%</b>	<b>20.0%</b>	<b>1.01</b>	<b>1.00</b>	<b>80.0%</b>	<b>87.5%</b>	<b>50.0%</b>	<b>95.0%</b>	<b>5.0%</b>	<b>93.8%</b>	<b>100.0%</b>
<b>Social Care</b>	<b>2,669</b>	<b>3,123</b>	<b>1.17</b>	<b>15.7%</b>	<b>84.3%</b>	<b>1.09</b>	<b>1.19</b>	<b>90.4%</b>	<b>91.6%</b>	<b>90.2%</b>	<b>49.2%</b>	<b>50.8%</b>	<b>64.5%</b>	<b>46.3%</b>
<b>Social Workers</b>	<b>214</b>	<b>253</b>	<b>1.18</b>	<b>17.0%</b>	<b>83.0%</b>	<b>1.07</b>	<b>1.21</b>	<b>92.1%</b>	<b>88.4%</b>	<b>92.9%</b>	<b>67.2%</b>	<b>32.8%</b>	<b>86.0%</b>	<b>63.3%</b>
<b>Psychologists</b>	<b>213</b>	<b>242</b>	<b>1.14</b>	<b>19.8%</b>	<b>80.2%</b>	<b>1.05</b>	<b>1.16</b>	<b>92.1%</b>	<b>89.6%</b>	<b>92.8%</b>	<b>71.9%</b>	<b>28.1%</b>	<b>85.4%</b>	<b>68.6%</b>
<b>Pharmacy</b>	<b>6</b>	<b>9</b>	<b>1.47</b>	<b>11.1%</b>	<b>88.9%</b>	<b>2.63</b>	<b>1.39</b>	<b>77.8%</b>	<b>100.0%</b>	<b>75.0%</b>	<b>55.6%</b>	<b>44.4%</b>	<b>0.0%</b>	<b>62.5%</b>
Counsellor Therapists	20	25	1.22	8.0%	92.0%	1.00	1.25	100.0%	100.0%	100.0%	56.0%	44.0%	100.0%	52.2%
Other Health & Social Care	50	61	1.23	18.0%	82.0%	1.11	1.26	83.6%	83.6%	84.0%	50.8%	49.2%	72.7%	46.0%
Play Therapists/ Specialists	12	16	1.32	18.8%	81.3%	1.00	1.42	93.8%	93.8%	92.3%	56.3%	43.8%	100.0%	46.2%
<b>H&amp;SC, Other</b>	<b>82</b>	<b>102</b>	<b>1.24</b>	<b>15.7%</b>	<b>84.3%</b>	<b>1.07</b>	<b>1.28</b>	<b>89.2%</b>	<b>87.5%</b>	<b>89.5%</b>	<b>52.9%</b>	<b>47.1%</b>	<b>81.3%</b>	<b>47.7%</b>
<b>Health &amp; Social Care</b>	<b>3,983</b>	<b>4,653</b>	<b>1.17</b>	<b>14.5%</b>	<b>85.5%</b>	<b>1.08</b>	<b>1.18</b>	<b>90.5%</b>	<b>91.1%</b>	<b>90.4%</b>	<b>55.9%</b>	<b>44.1%</b>	<b>70.5%</b>	<b>53.5%</b>
Executive Management	35	35	1.00	34.3%	65.7%	1.00	1.00	91.4%	91.4%	91.3%	97.1%	2.9%	100.0%	95.7%
Senior Management (VIII & GM)	162	166	1.03	29.5%	70.5%	1.00	1.04	95.8%	95.8%	94.9%	94.6%	5.4%	100.0%	92.3%
<b>Management (VIII &amp; above)</b>	<b>197</b>	<b>201</b>	<b>1.02</b>	<b>30.3%</b>	<b>69.7%</b>	<b>1.00</b>	<b>1.03</b>	<b>95.0%</b>	<b>96.7%</b>	<b>94.3%</b>	<b>95.0%</b>	<b>5.0%</b>	<b>100.0%</b>	<b>92.9%</b>
Middle Management (V-VII)	488	528	1.08	21.8%	78.2%	1.03	1.10	91.9%	91.9%	93.0%	80.7%	19.3%	93.0%	77.2%
Other Administrative	15	15	1.01	13.3%	86.7%	1.00	1.01	100.0%	100.0%	100.0%	93.3%	6.7%	100.0%	92.3%
<b>Administrative/ Supervisory (V to VII)</b>	<b>503</b>	<b>543</b>	<b>1.08</b>	<b>21.5%</b>	<b>78.5%</b>	<b>1.03</b>	<b>1.10</b>	<b>92.1%</b>	<b>88.0%</b>	<b>93.2%</b>	<b>81.0%</b>	<b>19.0%</b>	<b>93.2%</b>	<b>77.7%</b>
<b>Clerical (III &amp; IV)</b>	<b>677</b>	<b>821</b>	<b>1.21</b>	<b>9.5%</b>	<b>90.5%</b>	<b>1.13</b>	<b>1.22</b>	<b>86.0%</b>	<b>75.6%</b>	<b>87.1%</b>	<b>55.9%</b>	<b>44.1%</b>	<b>69.2%</b>	<b>54.5%</b>
<b>Management &amp; Administrative</b>	<b>1,376</b>	<b>1,565</b>	<b>1.14</b>	<b>16.4%</b>	<b>83.6%</b>	<b>1.05</b>	<b>1.16</b>	<b>89.3%</b>	<b>86.3%</b>	<b>89.8%</b>	<b>69.6%</b>	<b>30.4%</b>	<b>87.5%</b>	<b>66.2%</b>
Catering	103	125	1.21	30.4%	69.6%	1.17	1.22	98.4%	98.4%	98.9%	58.4%	41.6%	81.6%	48.3%
Household Services	417	581	1.39	15.5%	84.5%	1.35	1.40	88.6%	88.6%	91.2%	33.6%	66.4%	53.3%	29.9%
Other Labs & Associated	1	2	1.57		100.0%		1.57	50.0%	50.0%	50.0%	50.0%	50.0%		50.0%
Other Support	152	248	1.64	41.9%	58.1%	1.30	2.01	95.6%	95.6%	97.9%	24.6%	75.4%	51.9%	4.9%
Portering	26	35	1.36	97.1%	2.9%	1.36	1.25	85.7%	85.7%	100.0%	48.6%	51.4%	50.0%	0.0%
<b>Support</b>	<b>699</b>	<b>991</b>	<b>1.42</b>	<b>26.8%</b>	<b>73.2%</b>	<b>1.31</b>	<b>1.46</b>	<b>91.4%</b>	<b>86.1%</b>	<b>93.4%</b>	<b>35.0%</b>	<b>65.0%</b>	<b>56.4%</b>	<b>27.2%</b>
Maintenance	121	134	1.11	93.3%	6.7%	1.09	1.48	94.0%	94.0%	100.0%	76.9%	23.1%	80.8%	22.2%
Technical Services	9	9	0.99	66.7%	33.3%	0.98	1.00	100.0%	100.0%	100.0%	100.0%	0.0%	100.0%	100.0%



<b>Maintenance/ Technical</b>	<b>130</b>	<b>143</b>	<b>1.10</b>	<b>91.6%</b>	<b>8.4%</b>	<b>1.08</b>	<b>1.32</b>	<b>94.4%</b>	<b>93.9%</b>	<b>100.0%</b>	<b>78.3%</b>	<b>21.7%</b>	<b>81.7%</b>	<b>41.7%</b>
<b>General Support</b>	<b>829</b>	<b>1,134</b>	<b>1.37</b>	<b>35.0%</b>	<b>65.0%</b>	<b>1.22</b>	<b>1.46</b>	<b>91.8%</b>	<b>88.7%</b>	<b>93.5%</b>	<b>40.5%</b>	<b>59.5%</b>	<b>64.7%</b>	<b>27.4%</b>
HCA, Nurse's Aide, etc.	6,879	8,020	1.17	23.3%	76.7%	1.10	1.19	83.4%	83.4%	83.6%	52.2%	47.8%	63.5%	48.8%
Health & Social Care Assistants	12	15	1.28	20.0%	80.0%	1.22	1.30	80.0%	80.0%	83.3%	53.3%	46.7%	100.0%	41.7%
<b>Health Care Assistants</b>	<b>6,890</b>	<b>8,035</b>	<b>1.17</b>	<b>23.3%</b>	<b>76.7%</b>	<b>1.10</b>	<b>1.19</b>	<b>83.4%</b>	<b>82.8%</b>	<b>83.6%</b>	<b>52.2%</b>	<b>47.8%</b>	<b>63.6%</b>	<b>48.8%</b>
<b>Home Help</b>	<b>102</b>	<b>316</b>	<b>3.08</b>	<b>8.2%</b>	<b>91.8%</b>	<b>4.61</b>	<b>2.99</b>	<b>60.8%</b>	<b>53.8%</b>	<b>61.4%</b>	<b>3.2%</b>	<b>96.8%</b>	<b>3.8%</b>	<b>3.1%</b>
<b>Care, other</b>	<b>1,593</b>	<b>1,879</b>	<b>1.18</b>	<b>25.4%</b>	<b>74.6%</b>	<b>1.13</b>	<b>1.20</b>	<b>89.2%</b>	<b>89.3%</b>	<b>89.2%</b>	<b>60.6%</b>	<b>39.4%</b>	<b>75.3%</b>	<b>55.5%</b>
<b>Patient &amp; Client Care</b>	<b>8,586</b>	<b>10,230</b>	<b>1.19</b>	<b>23.2%</b>	<b>76.8%</b>	<b>1.12</b>	<b>1.22</b>	<b>83.8%</b>	<b>83.8%</b>	<b>83.8%</b>	<b>52.2%</b>	<b>47.8%</b>	<b>65.3%</b>	<b>48.3%</b>

## Employment by WTE, Headcount, Gender, Full-Time /Part-Time etc.: Aug 2020

Social Care Disability Services CHO	WTE	Headcount	WTE: no.	% Male	% female	Male WTE: no.	Female WTE: no.	% Total Perm	% Male Perm	% Female Perm	% Total Full Time	% Total Part Time	% Male FT	% Female FT
<b>Overall</b>	<b>18,499</b>	<b>21,833</b>	<b>1.18</b>	<b>19.1%</b>	<b>80.9%</b>	<b>1.11</b>	<b>1.20</b>	<b>87.4%</b>	<b>86.3%</b>	<b>87.7%</b>	<b>56.9%</b>	<b>43.1%</b>	<b>69.9%</b>	<b>53.9%</b>
<b>CHO 1</b>	<b>1,542</b>	<b>1,717</b>	<b>1.11</b>	<b>21.1%</b>	<b>78.9%</b>	<b>1.06</b>	<b>1.13</b>	<b>88.2%</b>	<b>88.2%</b>	<b>88.3%</b>	<b>76.9%</b>	<b>23.1%</b>	<b>89.5%</b>	<b>73.6%</b>
HSE	215	235	1.10	25.1%	74.9%	1.03	1.12	83.8%	83.8%	84.1%	74.0%	26.0%	94.9%	94.9%
Section 38	1,268	1,514	1.19	22.2%	77.8%	1.15	1.21	80.4%	80.4%	79.8%	39.1%	60.9%	44.9%	44.9%
<b>CHO 2</b>	<b>1,482</b>	<b>1,749</b>	<b>1.18</b>	<b>22.6%</b>	<b>77.4%</b>	<b>1.13</b>	<b>1.20</b>	<b>80.8%</b>	<b>80.8%</b>	<b>80.4%</b>	<b>43.8%</b>	<b>56.2%</b>	<b>52.4%</b>	<b>41.3%</b>
HSE	137	157	1.14	20.4%	79.6%	1.02	1.18	85.4%	85.4%	89.6%	72.6%	27.4%	87.5%	87.5%
Section 38	1,757	2,073	1.18	12.1%	87.9%	1.15	1.18	83.7%	83.7%	84.4%	38.6%	61.4%	40.0%	40.0%
<b>CHO 3</b>	<b>1,894</b>	<b>2,230</b>	<b>1.18</b>	<b>12.6%</b>	<b>87.4%</b>	<b>1.13</b>	<b>1.18</b>	<b>83.9%</b>	<b>83.9%</b>	<b>84.8%</b>	<b>41.0%</b>	<b>59.0%</b>	<b>45.4%</b>	<b>40.3%</b>
HSE	291	315	1.08	29.5%	70.5%	1.01	1.12	86.3%	86.3%	84.2%	83.8%	16.2%	97.8%	97.8%
Section 38	2,204	2,656	1.20	19.1%	80.9%	1.15	1.22	84.3%	84.3%	85.4%	62.2%	37.8%	69.5%	69.5%
<b>CHO 4</b>	<b>2,495</b>	<b>2,971</b>	<b>1.19</b>	<b>20.2%</b>	<b>79.8%</b>	<b>1.13</b>	<b>1.21</b>	<b>84.5%</b>	<b>84.5%</b>	<b>85.3%</b>	<b>64.5%</b>	<b>35.5%</b>	<b>73.9%</b>	<b>62.1%</b>
HSE	374	495	1.32	11.1%	88.9%	1.11	1.36	99.4%	99.4%	99.3%	52.9%	47.1%	78.2%	78.2%
Section 38	1,139	1,321	1.16	20.7%	79.3%	1.09	1.18	84.3%	84.3%	83.5%	45.9%	54.1%	61.7%	61.7%
<b>CHO 5</b>	<b>1,512</b>	<b>1,816</b>	<b>1.20</b>	<b>18.1%</b>	<b>81.9%</b>	<b>1.09</b>	<b>1.23</b>	<b>88.4%</b>	<b>88.4%</b>	<b>88.2%</b>	<b>47.8%</b>	<b>52.2%</b>	<b>64.4%</b>	<b>44.1%</b>
HSE	238	265	1.11	18.5%	81.5%	1.03	1.13	90.9%	90.9%	94.0%	80.0%	20.0%	98.0%	98.0%
Section 38	949	1,099	1.16	22.1%	77.9%	1.14	1.16	92.3%	92.3%	91.9%	64.0%	36.0%	74.5%	74.5%
<b>CHO 6</b>	<b>1,187</b>	<b>1,364</b>	<b>1.15</b>	<b>21.4%</b>	<b>78.6%</b>	<b>1.12</b>	<b>1.16</b>	<b>92.0%</b>	<b>92.0%</b>	<b>92.4%</b>	<b>67.1%</b>	<b>32.9%</b>	<b>78.4%</b>	<b>64.0%</b>
HSE	126	215	1.71	12.6%	87.4%	2.34	1.65	75.8%	75.8%	77.1%	45.1%	54.9%	29.6%	29.6%
Section 38	2,902	3,414	1.18	23.3%	76.7%	1.10	1.20	88.4%	88.4%	88.7%	68.0%	32.0%	81.7%	81.7%
<b>CHO 7</b>	<b>3,028</b>	<b>3,629</b>	<b>1.20</b>	<b>22.7%</b>	<b>77.3%</b>	<b>1.12</b>	<b>1.23</b>	<b>87.7%</b>	<b>87.7%</b>	<b>87.9%</b>	<b>66.6%</b>	<b>33.4%</b>	<b>80.0%</b>	<b>62.7%</b>
HSE	597	701	1.17	16.0%	84.0%	1.07	1.20	87.2%	87.2%	86.9%	67.5%	32.5%	85.7%	85.7%
Section 38	1,568	1,890	1.21	21.1%	78.9%	1.13	1.23	95.2%	95.2%	95.2%	40.1%	59.9%	49.6%	49.6%
<b>CHO 8</b>	<b>2,166</b>	<b>2,591</b>	<b>1.20</b>	<b>19.7%</b>	<b>80.3%</b>	<b>1.12</b>	<b>1.22</b>	<b>93.0%</b>	<b>93.0%</b>	<b>92.8%</b>	<b>47.5%</b>	<b>52.5%</b>	<b>57.5%</b>	<b>45.0%</b>
HSE	466	511	1.10	30.5%	69.5%	1.04	1.12	87.5%	87.5%	87.6%	85.1%	14.9%	92.3%	92.3%
Section 38	2,720	3,249	1.19	12.5%	87.5%	1.11	1.21	88.4%	88.4%	88.9%	50.6%	49.4%	65.4%	65.4%
<b>CHO 9</b>	<b>3,186</b>	<b>3,760</b>	<b>1.18</b>	<b>15.0%</b>	<b>85.0%</b>	<b>1.09</b>	<b>1.20</b>	<b>88.2%</b>	<b>88.2%</b>	<b>88.7%</b>	<b>55.3%</b>	<b>44.7%</b>	<b>72.8%</b>	<b>52.2%</b>
<b>other Community Services</b>	<b>6</b>	<b>6</b>	<b>1.01</b>	<b>16.7%</b>	<b>83.3%</b>	<b>1.00</b>	<b>1.01</b>	<b>83.3%</b>	<b>83.3%</b>	<b>80.0%</b>	<b>83.3%</b>	<b>16.7%</b>	<b>100.0%</b>	<b>80.0%</b>

Summary Staff Movement: August 2020

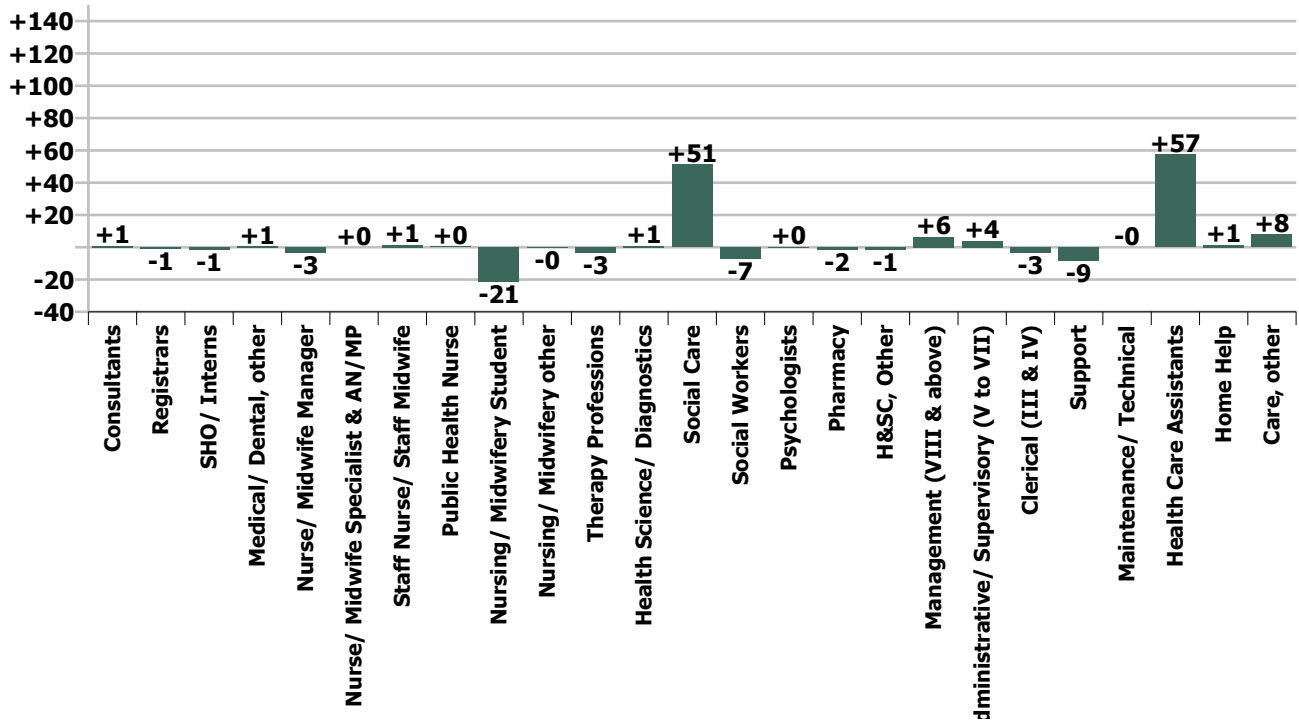
Month-on-month  
Summary

WTE change since Jul 20	% change since Jul 20	overall	Consultants	Registrars	SHO/ Interns	Medical/ Dental, other	Medical & Dental	Nurse/ Midwife Manager	Nurse/ Midwife Specialist & AN/MP	Staff Nurse/ Staff Midwife	Public Health Nurse	Nursing/ Midwifery Student	Nursing/ Midwifery other	Nursing & Midwifery	Therapy Professions	Health Science/ Diagnostics	Social Care	Social Workers	Psychologists	Pharmacy	H&SC, Other	Health & Social Care Professionals	Management (VIII & above)	Administrativ e/ Supervisory (V to VII)	Clerical (III & IV)	Management & Administrativ e	Support	Maintenance/ Technical	General Support	Health Care Assistants	Home Help	Care, other	Patient & Client Care
Overall	+0.4%	+81	+0.8	-0.9	-1.3	+0.7	-0.8	-3.2	+0.0	+1.4	+0.4	-21.2	-0.3	-22.8	-3.2	+1.0	+51.4	-7.1	+0.1	-1.7	-1.3	+39.2	+6.3	+4.0	-3.4	+6.9	-8.5	-0.1	-8.6	+57.4	+1.5	+7.8	+66.6
CHO 1	+0.4%	+7					0.0	-1.3	-0.0	+3.5		+0.7	+0.1	+3.0	-2.8		-0.1	-0.4	-0.0		+0.7	-2.6		+0.7	+0.3	+1.0	-0.1		-0.1	+4.0	+0.8	+0.4	+5.2
CHO 2	+0.2%	+3		-0.2			-0.2	+0.1	+0.0	+1.4		+0.0		+1.6	-3.0		-0.1	-2.8	+1.4		-1.1	-5.5	+1.1	+0.6	+0.3	+2.0	+0.1		+0.1	+8.0		-2.5	+5.5
CHO 3	-0.3%	-5	-0.1				-0.1	-0.6		+1.5		-22.0		-21.1	+0.5	+1.0	+4.7	-0.1	-1.0			+5.0	+1.0	+0.2	-0.3	+0.9	+0.6	-0.8	-0.2	+11.9		-1.2	+10.7
CHO 4	-0.0%	-0				+0.7	+0.7	-1.3	-1.0	-3.5		+0.6		-5.2	-1.3		+2.7	+0.1	-0.3		-0.3	+0.9	-1.2	+1.1	-0.3	-0.5	-3.0	+0.0	-3.0	-0.7	+7.8	+7.1	
CHO 5	+0.5%	+7	+1.0				+1.0	+0.6		-0.5	+0.4	-0.1		+0.4	+0.6		+3.1	-1.9	+0.5		-0.6	+1.7	+0.5	+0.1	-0.2	+0.4	-0.3		-0.3	+8.9	+0.7	-5.2	+4.3
CHO 6	+1.3%	+15					0.0	-0.3		+0.7				+0.4	+0.9		+12.2	-0.7	+0.5		-0.2	+12.7	-1.0	+0.4	-0.2	-0.8	+0.7	-0.8	-0.0	-3.2		+6.3	+3.1
CHO 7	+0.6%	+19			-0.5		-0.5	-1.6	+1.0	-1.3			+1.0	-0.9	+3.9		+5.1	-0.2	-0.7	-1.7		+6.4	+0.0	+2.2	-1.3	+0.9	-3.9	+2.5	-1.3	+10.5	+0.1	+3.8	+14.4
CHO 8	+0.6%	+13		-0.2			-0.2	+0.5	+0.0	-4.3		-1.3	-1.4	-6.4	-0.6		+9.4	+0.0	-1.0		-0.0	+7.8	+1.0	-1.2	-1.3	-1.5	-0.4	-1.0	-1.4	+16.5	-0.1	-1.7	+14.6
CHO 9	+0.6%	+20	+0.0	-0.5	-0.8		-1.3	+0.8	+0.1	+3.8		+0.8		+5.4	-1.5		+14.3	-1.0	+0.7		+0.3	+12.8	+5.0	-1.1	+3.4	-2.4	-0.0	-2.4	+1.6		+0.2	+1.7	
other Community Services	+20.4%	+1																				+0.0	+1.0		+1.0								
		+0.4%	+3.6%	-9.5%	-14.6%	+4.6%	-1.4%	-0.4%	+0.0%	+0.1%	+7.1%	-12.0%	-1.3%	-0.6%	-0.4%	+5.1%	+2.0%	-3.2%	+0.0%	-21.3%	-1.5%	+1.0%	+3.3%	+0.8%	-0.5%	+0.5%	-1.2%	-0.0%	-1.0%	+0.8%	+1.4%	+0.5%	+0.8%

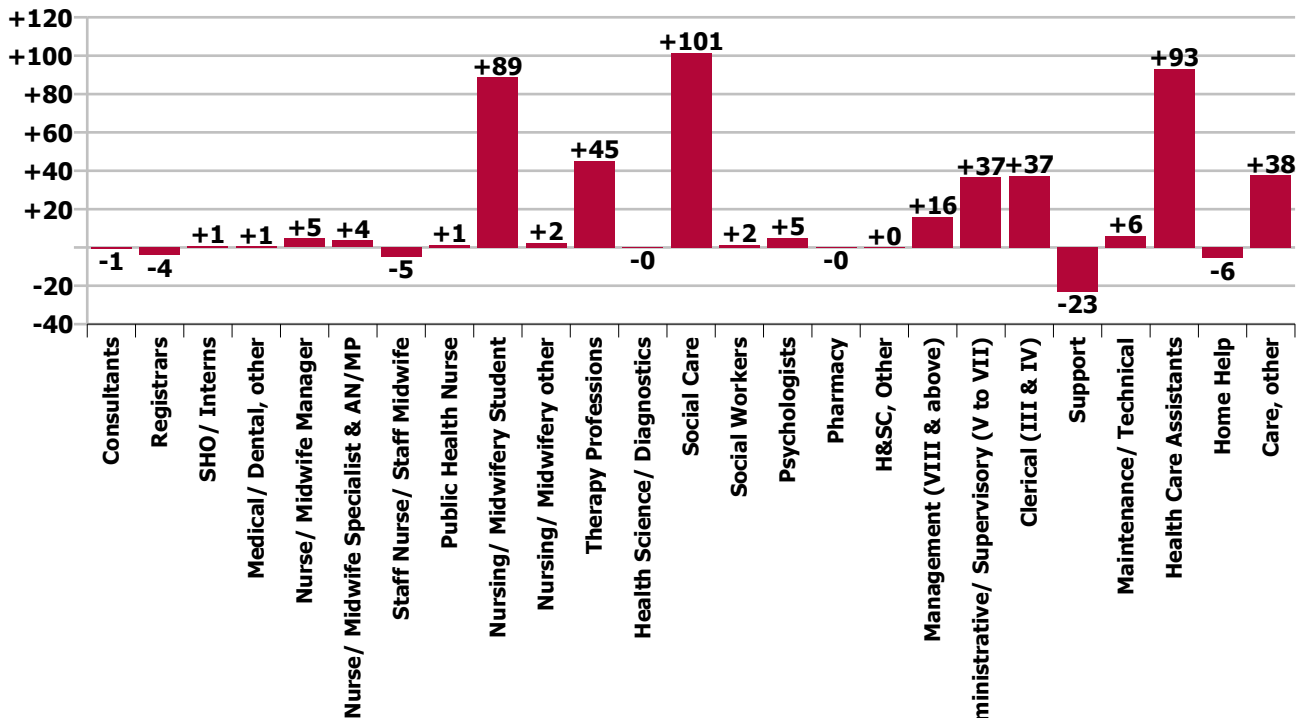
Year-on-year Summary

WTE change since Aug 19	% change since Aug 19	overall	Consultants	Registrars	SHO/ Interns	Medical/ Dental, other	Medical & Dental	Nurse/ Midwife Manager	Nurse/ Midwife Specialist & AN/MP	Staff Nurse/ Staff Midwife	Public Health Nurse	Nursing/ Midwifery Student	Nursing/ Midwifery other	Nursing & Midwifery	Therapy Professions	Health Science/ Diagnostics	Social Care	Social Workers	Psychologists	Pharmacy	H&SC, Other	Health & Social Care Professionals	Management (VIII & above)	Administrativ e/ Supervisory (V to VII)	Clerical (III & IV)	Management & Administrativ e	Support	Maintenance/ Technical	General Support	Health Care Assistants	Home Help	Care, other	Patient & Client Care
Overall	+2.5%	+444	-1	-4	+1	+1	-3	+5	+4	-5	+1	+89	+2	+96	+45	-0	+101	+2	+5	-0	+0	+153	+16	+37	+37	+90	-23	+6	-17	+93	-6	+38	+125
CHO 1	+4.0%	+59				+0	+0	+6	+3	-9		+28	+0	+28	+3		+0	+6	+1		-2	+8	+2	+8	+5	+15	+1	-0	+1	+3	+1	+3	+7
CHO 2	+0.4%	+6						+4	-1	-3		+1		+1	-8		+15	-2	-1		-2	+2	+1	+1	-3	-1	-3	+0	-3	+7		-0	+7
CHO 3	+4.3%	+78	-1				-1	+5	+1	+3		-2		+6	+6	+2	+15	-4	+5		+1	+25	+1	+2	+3	+6	-2	+4	+2	+36		+4	+39
CHO 4	+0.9%	+22				+1	+1	-4	+0	-10		+18		+3	-7		+2	+0	-2		+2	-4	+0	+3	+1	+5	-1	+0	-1	-5		+23	+18
CHO 5	+3.7%	+54				-0	-0	-2	+1	+10	+1	+0		+11	+1		-13	-1	+1		-1	-14	+2	+1	-1	+3	-5	-1	-6	+58	-7	+9	+60
CHO 6	+1.5%	+17						-2		-8				-10	-1		-1	-4	-1		+0	-6	+0	+4	+13	+17	+15	+2	+18	+7		-8	-1
CHO 7	+3.4%	+100		+0	-0		+0	-5	-1	+17		+8	+1	+20	+28		+18	+2	+0	-0		+49	+4	+6	+7	+17	-10	+4	-6	+8	-1	+12	+19
CHO 8	+1.4%	+29		-0			-0	-5	+0	+3		+17	+0	+15	+6		+17	+1	-4		+1	+21	+2	+3	+5	+10	-6	-1	-7	-7	+2	-5	-10
CHO 9	+2.5%	+79	-0	-4	+1		-3	+6	+1	-7		+19	+1	+20	+17	-2	+47	+2	+7		+2	+72	+4	+7	+6	+17	-12	-2	-14	-13		+1	-12
other Community Services	+20.2%	+1																					+1		+1		+1						
		+2.5%	-3.5%	-32.1%	+12.9%	+4.3%	-5.8%	+0.5%	+6.0%	-0.2%	+29.1%	+132.7%	+11.2%	+2.7%	+6.2%	-0.4%	+3.9%	+0.7%	+2.5%	-3.8%	+0.1%	+4.0%	+8.9%	+7.9%	+5.8%	+7.0%	-3.2%	+5.0%	-2.0%	+1.4%	-5.3%	+2.4%	+1.5%

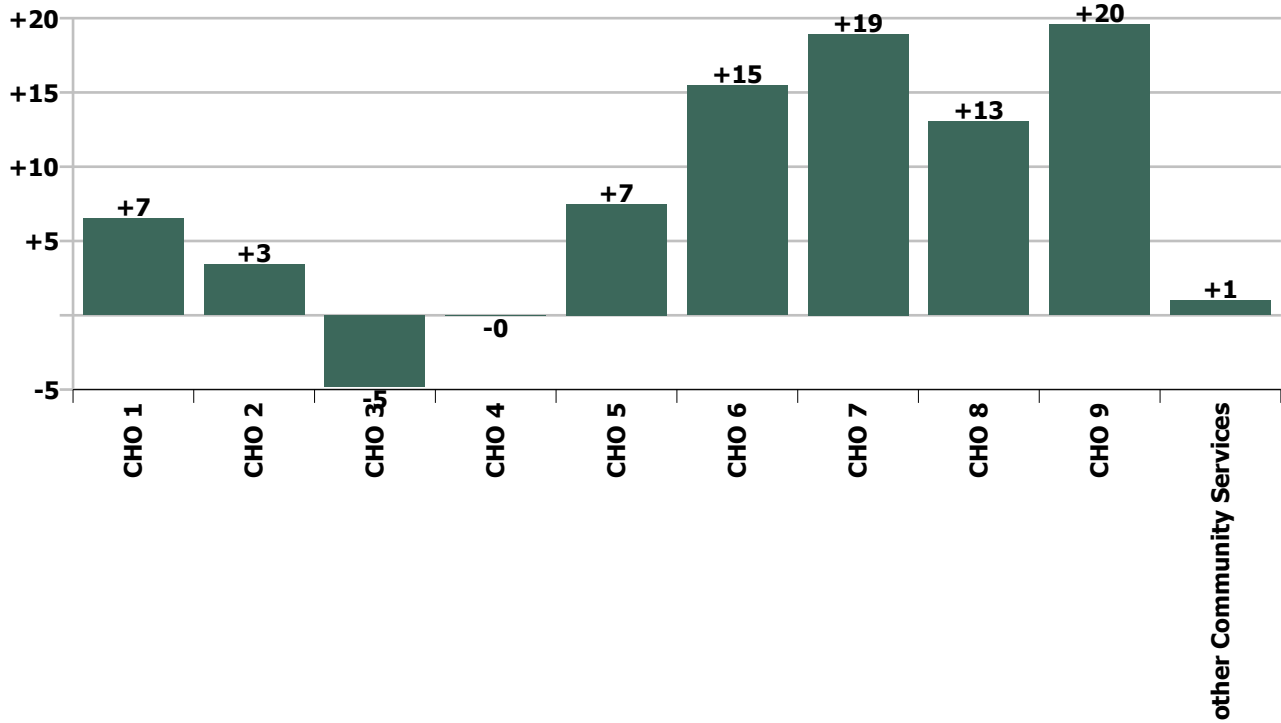
### Staff Group change since: Jul 2020



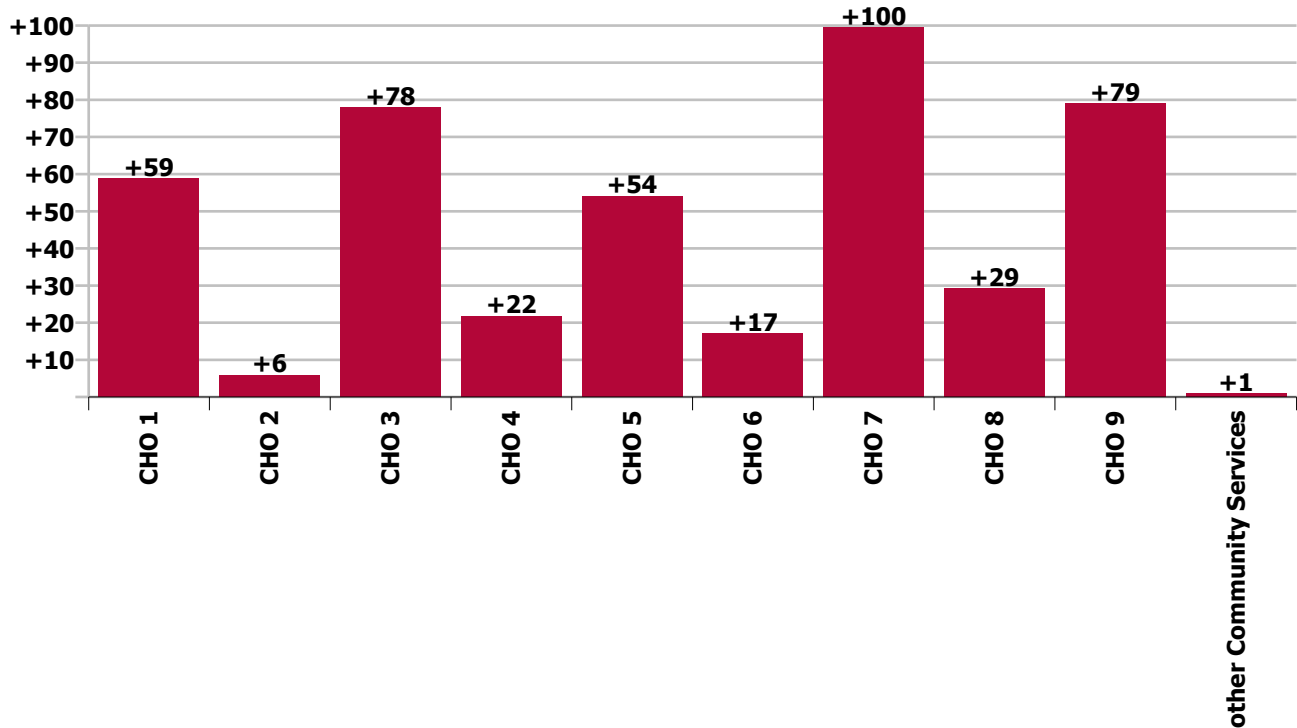
### Staff Group change since: Aug 2019



CHO change since: Jul 2020



CHO change since: Aug 2019



## Longitudinal Employment Levels by Grade Group - Oct 2013 to Aug 2020

Aug 2020 (Oct 2013 figure: 14,880)	WTE Aug 2020	WTE change since Oct 13	WTE change since Dec 15	WTE change since Dec 16	WTE change since Dec 17	WTE change since Dec 18	WTE change since Dec 19	% change since Oct 13	% change since Dec 15	% change since Dec 16	% change since Dec 17	% change since Dec 18	% change since Dec 19
<b>Overall</b>	<b>18,499</b>	<b>+3,619</b>	<b>+2,784</b>	<b>+1,745</b>	<b>+1,102</b>	<b>+680</b>	<b>+197</b>	<b>+24.3%</b>	<b>+17.7%</b>	<b>+10.4%</b>	<b>+6.3%</b>	<b>+3.8%</b>	<b>+1.1%</b>
Consultant Medicine		-2	-2	-2				-100.0%	-100.0%	-100.0%	-100.0%	-100.0%	-100.0%
Consultant Paediatrics	3	+0	-0	-0	-0			+6.6%	-3.5%	-5.0%	-2.9%		
Consultant Psychiatry	20	-9	-1	-1	-3	+2	-1	-30.2%	-3.9%	-4.9%	-12.0%	+12.2%	-3.6%
Consultant Surgery		-0	-0	-0				-100.0%	-100.0%	-100.0%	-100.0%	-100.0%	-100.0%
<b>Consultants</b>	<b>23</b>	<b>-10</b>	<b>-3</b>	<b>-3</b>	<b>-3</b>	<b>+2</b>	<b>-1</b>	<b>-30.5%</b>	<b>-10.2%</b>	<b>-11.1%</b>	<b>-10.9%</b>	<b>+10.4%</b>	<b>-3.1%</b>
Registrar	4	-5	-2	-2	-2	-2	-3	-55.9%	-39.7%	-39.7%	-39.7%	-32.0%	-48.3%
Senior Registrar	3			+1		+1	+1			+50.0%		+50.0%	+50.0%
Specialist Registrar	2				-2	+1	-2				-50.0%	+100.0%	-50.0%
<b>Registrars</b>	<b>9</b>	<b>-5</b>	<b>-2</b>	<b>-1</b>	<b>-4</b>	<b>+0</b>	<b>-4</b>	<b>-34.7%</b>	<b>-21.6%</b>	<b>-13.8%</b>	<b>-33.7%</b>	<b>+3.6%</b>	<b>-33.7%</b>
<b>SHO/ Interns</b>	<b>8</b>	<b>+0</b>	<b>+3</b>	<b>+2</b>	<b>+1</b>	<b>+1</b>	<b>+1</b>	<b>+4.1%</b>	<b>+58.0%</b>	<b>+31.7%</b>	<b>+12.9%</b>	<b>+13.7%</b>	<b>+13.5%</b>
Dentists			-1					-100.0%	-100.0%	-100.0%	-100.0%	-100.0%	-100.0%
Other Medical	15	-2	-0	+0	+1	+1	+1	-12.2%	-1.8%	+1.3%	+5.6%	+6.5%	+4.7%
<b>Medical/ Dental, other</b>	<b>15</b>	<b>-2</b>	<b>-1</b>	<b>+0</b>	<b>+1</b>	<b>+1</b>	<b>+1</b>	<b>-12.2%</b>	<b>-5.1%</b>	<b>+1.3%</b>	<b>+5.6%</b>	<b>+6.5%</b>	<b>+4.7%</b>
<b>Medical &amp; Dental</b>	<b>55</b>	<b>-17</b>	<b>-3</b>	<b>-2</b>	<b>-6</b>	<b>+4</b>	<b>-4</b>	<b>-23.2%</b>	<b>-5.0%</b>	<b>-3.8%</b>	<b>-9.2%</b>	<b>+8.7%</b>	<b>-6.0%</b>
Clinical Nurse/ Midwife Manager	818	+28	+20	+6	+9	+9	+7	+3.5%	+2.4%	+0.8%	+1.1%	+1.2%	+0.9%
Director Nursing/Midwifery, Assistant	42	+2	+5	-1	+4	+4	+1	+5.7%	+13.2%	-1.9%	+11.9%	+9.2%	+1.7%
Director of Nursing/Midwifery	37	-5	-10	-7	-9	-1	-5	-11.4%	-21.5%	-15.5%	-18.9%	-2.8%	-12.5%
<b>Nurse/ Midwife Manager</b>	<b>896</b>	<b>+25</b>	<b>+14</b>	<b>-1</b>	<b>+5</b>	<b>+12</b>	<b>+2</b>	<b>+2.9%</b>	<b>+1.6%</b>	<b>-0.1%</b>	<b>+0.6%</b>	<b>+1.3%</b>	<b>+0.3%</b>
Advanced Nurse/ Midwife Practitioner	4	+3	+3	+3	+2	+2	+2	+300.0%	+300.0%	+300.0%	+100.0%	+100.0%	+100.0%
Clinical Nurse/ Midwife Specialist	61	-21	-13	-10	-7	-6	+1	-25.4%	-17.5%	-14.6%	-10.9%	-8.6%	+1.1%
<b>Nurse/ Midwife Specialist &amp; AN/MP</b>	<b>65</b>	<b>-18</b>	<b>-10</b>	<b>-7</b>	<b>-5</b>	<b>-4</b>	<b>+3</b>	<b>-21.4%</b>	<b>-13.3%</b>	<b>-10.3%</b>	<b>-7.7%</b>	<b>-5.4%</b>	<b>+4.3%</b>
Graduate Nursing/ Midwifery		-10	-11					-100.0%	-100.0%	-100.0%	-100.0%	-100.0%	-100.0%
Staff Nurse [Intellectual Disability]	1,564	-191	-215	-160	-138	-120	-33	-10.9%	-12.1%	-9.3%	-8.1%	-7.1%	-2.0%
Staff Nurse [Psychiatric]	57	-88	-49	-28	-13	-14	-27	-60.7%	-46.0%	-32.8%	-19.1%	-19.6%	-31.8%
Staff Nurses [General/ Children's]	901	-118	+5	-32	-23	+33	+9	-11.5%	+0.5%	-3.5%	-2.5%	+3.8%	+1.1%
<b>Staff Nurse/ Staff Midwife</b>	<b>2,523</b>	<b>-406</b>	<b>-270</b>	<b>-221</b>	<b>-175</b>	<b>-101</b>	<b>-50</b>	<b>-13.9%</b>	<b>-9.7%</b>	<b>-8.0%</b>	<b>-6.5%</b>	<b>-3.8%</b>	<b>-1.9%</b>
<b>Public Health Nurse</b>	<b>7</b>	<b>-1</b>	<b>-1</b>	<b>+0</b>	<b>+1</b>	<b>-0</b>	<b>+0</b>	<b>-7.4%</b>	<b>-9.0%</b>	<b>+1.5%</b>	<b>+8.2%</b>	<b>-1.5%</b>	<b>+5.3%</b>
Pre-registration Nurse/ Midwife Intern	15	-7	+1	+3	+3	-20	-13	-30.4%	+5.0%	+25.0%	+27.2%	-56.9%	-46.9%
Pre-registration Nurse Intern (COVID-19)	125	+125	+125	+125	+125	+125	+125	-100.0%	-100.0%	-100.0%	-100.0%	-100.0%	-100.0%
Post-registration Nurse/ Midwife Student	4	+4	+4	+4	+4	+4	+4	-100.0%	-100.0%	-100.0%	-100.0%	-100.0%	-100.0%
Nursing/ Midwifery awaiting registration	11	+11	+11	+11	+11	+11	-3	-100.0%	-100.0%	-100.0%	-100.0%	-100.0%	-20.5%
<b>Nursing/ Midwifery Student</b>	<b>155</b>	<b>+134</b>	<b>+141</b>	<b>+143</b>	<b>+144</b>	<b>+121</b>	<b>+113</b>	<b>+621.8%</b>	<b>+988.7%</b>	<b>+1195.6%</b>	<b>+1218.7%</b>	<b>+346.5%</b>	<b>+269.4%</b>
Nursing Education/Clinical	24	-1	+3	+2	+2	+2	+2	-4.7%	+15.5%	+11.0%	+11.8%	+11.4%	+11.3%
Other Nursing/ Midwifery	1	-7	-5	-4	-4			-87.1%	-84.5%	-80.0%	-80.0%		
<b>Nursing/ Midwifery other</b>	<b>25</b>	<b>-8</b>	<b>-2</b>	<b>-2</b>	<b>-2</b>	<b>+2</b>	<b>+2</b>	<b>-24.4%</b>	<b>-8.5%</b>	<b>-6.4%</b>	<b>-5.8%</b>	<b>+10.9%</b>	<b>+10.8%</b>
<b>Nursing &amp; Midwifery</b>	<b>3,670</b>	<b>-273</b>	<b>-128</b>	<b>-87</b>	<b>-33</b>	<b>+30</b>	<b>+71</b>	<b>-6.9%</b>	<b>-3.4%</b>	<b>-2.3%</b>	<b>-0.9%</b>	<b>+0.8%</b>	<b>+2.0%</b>
Dietitians	20	+1	+8	+7	+8	+6	+1	+6.5%	+69.0%	+51.3%	+67.0%	+45.2%	+7.9%

Aug 2020 (Oct 2013 figure: 14,880)	WTE Aug 2020	WTE change since Oct 13	WTE change since Dec 15	WTE change since Dec 16	WTE change since Dec 17	WTE change since Dec 18	WTE change since Dec 19	% change since Oct 13	% change since Dec 15	% change since Dec 16	% change since Dec 17	% change since Dec 18	% change since Dec 19
<b>Overall</b>	<b>18,499</b>	<b>+3,619</b>	<b>+2,784</b>	<b>+1,745</b>	<b>+1,102</b>	<b>+680</b>	<b>+197</b>	<b>+24.3%</b>	<b>+17.7%</b>	<b>+10.4%</b>	<b>+6.3%</b>	<b>+3.8%</b>	<b>+1.1%</b>
Occupational Therapists	271	+89	+69	+20	+22	+30	+7	+49.2%	+34.4%	+7.8%	+8.9%	+12.4%	+2.5%
Physiotherapists	187	+37	+21	+2	+2	+6	-2	+25.1%	+12.8%	+1.0%	+1.1%	+3.2%	-1.3%
Podiatrists & Chiropodists		-0	-0	-0	-0			-100.0%	-100.0%	-100.0%	-100.0%	-100.0%	-100.0%
Speech & Language Therapists	301	+123	+88	+31	+19	+22	+9	+68.9%	+41.4%	+11.3%	+6.6%	+8.0%	+3.0%
<b>Therapy Professions</b>	<b>779</b>	<b>+251</b>	<b>+187</b>	<b>+59</b>	<b>+51</b>	<b>+64</b>	<b>+14</b>	<b>+47.5%</b>	<b>+31.5%</b>	<b>+8.2%</b>	<b>+7.0%</b>	<b>+9.0%</b>	<b>+1.9%</b>
Audiology		-7	-14	-13	-18			-100.0%	-100.0%	-100.0%	-100.0%	-100.0%	-100.0%
Clinical Engineering	13	-5	-5	-5	-5	+1	-0	-27.9%	-28.7%	-29.5%	-28.3%	+7.6%	-0.7%
Clinical Measurement	2	+1	+1	+1	+1	+1	+1	+100.0%	+100.0%	+100.0%	+100.0%	+100.0%	+100.0%
Medical Laboratory	4	+1	+1	+1	+1			+33.3%	+33.3%	+33.3%	+33.3%		
Phlebotomists						-1	-1	-100.0%	-100.0%	-100.0%	-100.0%	-100.0%	-100.0%
Radiographers	1	-0						-3.8%					
<b>Health Science/ Diagnostics</b>	<b>20</b>	<b>-10</b>	<b>-17</b>	<b>-16</b>	<b>-21</b>	<b>+1</b>	<b>-0</b>	<b>-32.6%</b>	<b>-46.2%</b>	<b>-44.6%</b>	<b>-51.3%</b>	<b>+4.8%</b>	<b>-0.4%</b>
<b>Social Care</b>	<b>2,669</b>	<b>+909</b>	<b>+730</b>	<b>+478</b>	<b>+323</b>	<b>+181</b>	<b>+74</b>	<b>+51.7%</b>	<b>+37.6%</b>	<b>+21.8%</b>	<b>+13.8%</b>	<b>+7.3%</b>	<b>+2.9%</b>
<b>Social Workers</b>	<b>214</b>	<b>+34</b>	<b>+25</b>	<b>-2</b>	<b>-7</b>	<b>-5</b>	<b>-5</b>	<b>+18.7%</b>	<b>+13.2%</b>	<b>-0.7%</b>	<b>-3.0%</b>	<b>-2.4%</b>	<b>-2.2%</b>
<b>Psychologists</b>	<b>213</b>	<b>+47</b>	<b>+21</b>	<b>+3</b>	<b>-11</b>	<b>+6</b>	<b>+8</b>	<b>+28.2%</b>	<b>+10.9%</b>	<b>+1.3%</b>	<b>-5.0%</b>	<b>+2.9%</b>	<b>+4.1%</b>
<b>Pharmacy</b>	<b>6</b>	<b>+0</b>			<b>+0</b>	<b>-1</b>	<b>-1</b>	<b>+7.0%</b>			<b>+0.7%</b>	<b>-12.4%</b>	<b>-9.6%</b>
Counsellor Therapists	20	+8	+4	+4	+1	+3	+2	+60.6%	+22.8%	+21.3%	+5.1%	+15.0%	+8.1%
HSCP Trainees/ Students		-2	-3	-2	-1			-100.0%	-100.0%	-100.0%	-100.0%	-100.0%	-100.0%
Other Health & Social Care	50	-17	-12	-9	-9	-2	-1	-25.8%	-19.8%	-14.9%	-15.6%	-4.4%	-1.9%
Play Therapists/ Specialists	12	-4	-1	-2	-1	-2	-3	-24.8%	-7.5%	-11.1%	-7.8%	-16.7%	-21.4%
<b>H&amp;SC, Other</b>	<b>82</b>	<b>-16</b>	<b>-13</b>	<b>-9</b>	<b>-10</b>	<b>-2</b>	<b>-3</b>	<b>-15.9%</b>	<b>-13.3%</b>	<b>-9.8%</b>	<b>-10.6%</b>	<b>-2.4%</b>	<b>-3.2%</b>
<b>Health &amp; Social Care Professionals</b>	<b>3,983</b>	<b>+1,216</b>	<b>+933</b>	<b>+513</b>	<b>+326</b>	<b>+244</b>	<b>+89</b>	<b>+43.9%</b>	<b>+30.6%</b>	<b>+14.8%</b>	<b>+8.9%</b>	<b>+6.5%</b>	<b>+2.3%</b>
Executive Management	35	+9	+7	+6	-3	+3	+4	+34.8%	+25.0%	+20.7%	-7.9%	+10.1%	+13.7%
Senior Management (VIII & GM)	162	+47	+31	+24	+21	+17	+13	+41.4%	+23.9%	+17.6%	+14.9%	+11.9%	+8.6%
<b>Management (VIII &amp; above)</b>	<b>197</b>	<b>+56</b>	<b>+38</b>	<b>+30</b>	<b>+18</b>	<b>+20</b>	<b>+17</b>	<b>+40.2%</b>	<b>+24.1%</b>	<b>+18.2%</b>	<b>+10.0%</b>	<b>+11.6%</b>	<b>+9.5%</b>
Middle Management (V-VII)	488	+168	+145	+109	+96	+60	+24	+52.4%	+42.1%	+28.7%	+24.3%	+14.1%	+5.2%
Other Administrative	15	-2	-0	+1	-1	-1	-0	-14.1%	-2.8%	+7.2%	-7.1%	-6.3%	-0.9%
<b>Administrative/ Supervisory (V to VII)</b>	<b>503</b>	<b>+165</b>	<b>+144</b>	<b>+110</b>	<b>+94</b>	<b>+59</b>	<b>+24</b>	<b>+49.0%</b>	<b>+40.2%</b>	<b>+27.9%</b>	<b>+23.1%</b>	<b>+13.3%</b>	<b>+5.0%</b>
<b>Clerical (III &amp; IV)</b>	<b>677</b>	<b>+103</b>	<b>+94</b>	<b>+70</b>	<b>+45</b>	<b>+23</b>	<b>+17</b>	<b>+17.9%</b>	<b>+16.1%</b>	<b>+11.5%</b>	<b>+7.1%</b>	<b>+3.6%</b>	<b>+2.5%</b>
<b>Management &amp; Administrative</b>	<b>1,376</b>	<b>+325</b>	<b>+276</b>	<b>+210</b>	<b>+157</b>	<b>+103</b>	<b>+57</b>	<b>+30.9%</b>	<b>+25.1%</b>	<b>+18.0%</b>	<b>+12.9%</b>	<b>+8.1%</b>	<b>+4.4%</b>
Catering	103	-33	-13	-10	-2	-1	+6	-24.2%	-11.3%	-8.5%	-2.0%	-0.7%	+5.7%
Household Services	417	-201	-131	-90	-49	-34	-2	-32.5%	-23.9%	-17.8%	-10.6%	-7.6%	-0.6%
Other Labs & Associated	1	+0	+0	+0	+0	+0	+0	+27.0%	+5.8%	+18.7%	+27.0%	+22.1%	+27.0%
Other Support	152	-43	-56	-42	-38	-40	-37	-22.0%	-26.9%	-21.8%	-20.0%	-20.7%	-19.4%
Portering	26	-21	-2	-1	-1	+0	-2	-44.6%	-7.8%	-3.5%	-2.9%	+0.1%	-6.7%
<b>Support</b>	<b>699</b>	<b>-297</b>	<b>-202</b>	<b>-143</b>	<b>-90</b>	<b>-74</b>	<b>-35</b>	<b>-29.8%</b>	<b>-22.4%</b>	<b>-17.0%</b>	<b>-11.4%</b>	<b>-9.6%</b>	<b>-4.8%</b>
Maintenance	121	-8	-6	-4	-10	+1	+5	-6.5%	-4.8%	-3.0%	-7.7%	+0.9%	+4.2%
Technical Services	9	+5	+4	+4	+4	+3	+1	+122.0%	+78.4%	+78.4%	+78.4%	+49.2%	+12.3%
<b>Maintenance/ Technical</b>	<b>130</b>	<b>-3</b>	<b>-2</b>	<b>+0</b>	<b>-6</b>	<b>+4</b>	<b>+6</b>	<b>-2.6%</b>	<b>-1.6%</b>	<b>+0.2%</b>	<b>-4.4%</b>	<b>+3.2%</b>	<b>+4.7%</b>



Aug 2020 (Oct 2013 figure: 14,880)	WTE Aug 2020	WTE change since Oct 13	WTE change since Dec 15	WTE change since Dec 16	WTE change since Dec 17	WTE change since Dec 18	WTE change since Dec 19	% change since Oct 13	% change since Dec 15	% change since Dec 16	% change since Dec 17	% change since Dec 18	% change since Dec 19
<b>Overall</b>	<b>18,499</b>	<b>+3,619</b>	<b>+2,784</b>	<b>+1,745</b>	<b>+1,102</b>	<b>+680</b>	<b>+197</b>	<b>+24.3%</b>	<b>+17.7%</b>	<b>+10.4%</b>	<b>+6.3%</b>	<b>+3.8%</b>	<b>+1.1%</b>
<b>General Support</b>	<b>829</b>	<b>-300</b>	<b>-204</b>	<b>-142</b>	<b>-96</b>	<b>-70</b>	<b>-29</b>	<b>-26.6%</b>	<b>-19.8%</b>	<b>-14.7%</b>	<b>-10.4%</b>	<b>-7.8%</b>	<b>-3.4%</b>
HCA, Nurse's Aide, etc.	6,879	+2,450	+1,710	+1,125	+703	+348	+62	+55.3%	+33.1%	+19.6%	+11.4%	+5.3%	+0.9%
Health & Social Care Assistants	12	+2	+1	+1	+3	+1	+2	+27.0%	+11.7%	+9.0%	+28.5%	+7.3%	+22.2%
<b>Health Care Assistants</b>	<b>6,890</b>	<b>+2,453</b>	<b>+1,711</b>	<b>+1,126</b>	<b>+705</b>	<b>+349</b>	<b>+64</b>	<b>+55.3%</b>	<b>+33.0%</b>	<b>+19.5%</b>	<b>+11.4%</b>	<b>+5.3%</b>	<b>+0.9%</b>
<b>Home Help</b>	<b>102</b>	<b>-36</b>	<b>+10</b>	<b>+7</b>	<b>-21</b>	<b>-10</b>	<b>-6</b>	<b>-25.8%</b>	<b>+10.6%</b>	<b>+7.4%</b>	<b>-17.1%</b>	<b>-9.0%</b>	<b>-5.8%</b>
<b>Ambulance Staff</b>		<b>-8</b>						<b>-100.0%</b>	<b>-100.0%</b>	<b>-100.0%</b>	<b>-100.0%</b>	<b>-100.0%</b>	<b>-100.0%</b>
<b>Care, other</b>	<b>1,593</b>	<b>+260</b>	<b>+190</b>	<b>+121</b>	<b>+69</b>	<b>+30</b>	<b>-46</b>	<b>+19.5%</b>	<b>+13.5%</b>	<b>+8.2%</b>	<b>+4.5%</b>	<b>+1.9%</b>	<b>-2.8%</b>
<b>Patient &amp; Client Care</b>	<b>8,586</b>	<b>+2,669</b>	<b>+1,910</b>	<b>+1,254</b>	<b>+753</b>	<b>+369</b>	<b>+12</b>	<b>+45.1%</b>	<b>+28.6%</b>	<b>+17.1%</b>	<b>+9.6%</b>	<b>+4.5%</b>	<b>+0.1%</b>

Source: Health Service Personnel Census