

Social Care Disability Services Employment Report: August 2021

Employment by Staff Group

Aug 2021 (Dec 2020 figure: 18,944)	WTE Jul 2021	WTE Aug 2021	WTE change since Jul 21	% change since Jul 21	WTE change since Dec 20	WTE change since Aug 20
Overall	19,331	19,346	+15	+0.1%	+402	+847
Consultants	21	23	+2	+9.5%	-2	-1
Registrars	11	10	-1	-9.0%	+2	+1
SHO/ Interns	8	8	-1	-8.7%	-1	-0
Medical/ Dental, other	14	14				-1
Medical & Dental	54	55	+0	+0.4%	-1	-0
Nurse/ Midwife Manager	912	905	-7	-0.7%	+8	+9
Nurse/ Midwife Specialist & AN/MP	66	66	-0	-0.2%	+2	+1
Staff Nurse/ Staff Midwife	2,584	2,570	-13	-0.5%	-23	+48
Public Health Nurse	10	10	-0	-0.3%	+3	+4
Pre-registration Nurse/ Midwife Intern	78	83.72	+6	+7.9%	+81	+69
Pre-registration Nurse Intern (COVID-19)	2	0.94	-1	-46.3%	-31	-125
Post-registration Nurse/ Midwife Student				-100.0%		-4
Nursing/ Midwifery awaiting registration	2		-2	-100.0%	-13	-11
Nursing/ Midwifery Student	81	85	+3	+4.0%	+37	-71
Nursing/ Midwifery other	23	22	-1	-4.9%	-1	-2
Nursing & Midwifery	3,676	3,659	-18	-0.5%	+26	-11
Therapy Professions	808	809	+1	+0.1%	+13	+30
Health Science/ Diagnostics	21	21	-0	-0.9%	+1	+1
Social Care	2,896	2,922	+26	+0.9%	+133	+252
Social Workers	226	226	+0	+0.1%	-2	+12
Psychologists	232	231	-1	-0.4%	+2	+19
Pharmacy	7	7	-0	-6.5%	+1	+1
H&SC, Other	70	70	+0	+0.1%	-5	-12
Health & Social Care Professionals	4,261	4,286	+25	+0.6%	+142	+303
Management (VIII & above)	217	214	-3	-1.3%	+10	+17
Administrative/ Supervisory (V to VII)	560	559	-0	-0.1%	+32	+56
Clerical (III & IV)	703	701	-2	-0.3%	+15	+24
Management & Administrative	1,480	1,474	-6	-0.4%	+58	+98
Support	638	629	-9	-1.4%	-34	-70
Maintenance/ Technical	130	132	+1	+1.2%	-1	+2
General Support	768	761	-7	-1.0%	-34	-69
Health Care Assistants	7,291	7,323	+32	+0.4%	+221	+433
Home Help	88	88	+0	+0.1%	-6	-15
Care, other	1,713	1,702	-12	-0.7%	-4	+108
Patient & Client Care	9,092	9,113	+20	+0.2%	+211	+527

Social Care Disability Services Employment by Administration (HSE / S38): August 2021

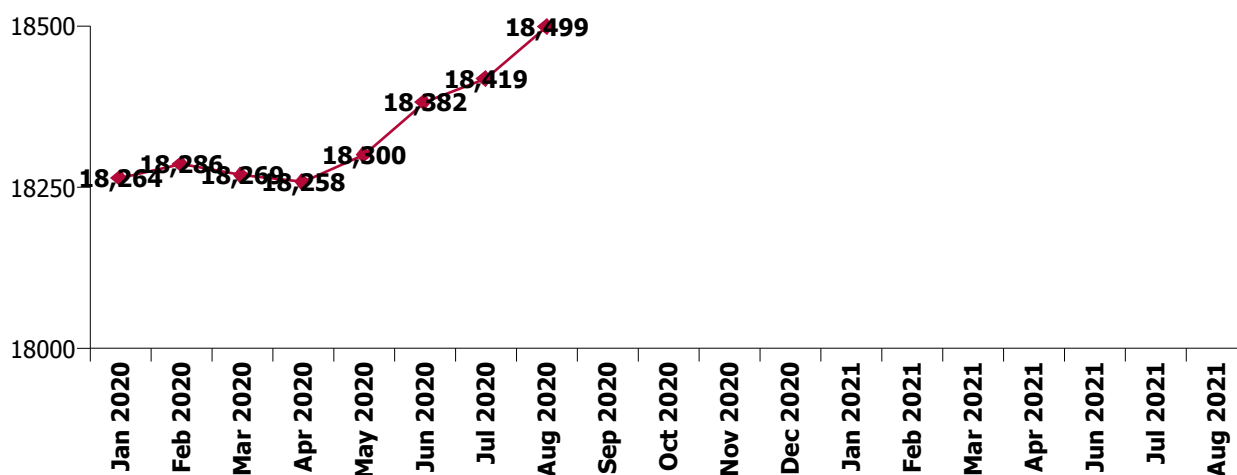
Aug 2021 (Dec 2020 figure: 18,944)	WTE Jul 2021	WTE Aug 2021	WTE change since Jul 21	% change since Jul 21	WTE change since Dec 20	WTE change since Aug 20
Overall	19,331	19,346	+15	+0.1%	+402	+847
HSE	4,132	4,114	-18	-0.4%	+29	+123
Section 38	15,200	15,232	+32	+0.2%	+372	+724

HSE

Aug 2021 (Dec 2020 figure: 4,085)	WTE Jul 2021	WTE Aug 2021	WTE change since Jul 21	% change since Jul 21	WTE change since Dec 20	WTE change since Aug 20
Overall	4,132	4,114	-18	-0.4%	+29	+123
Consultants	8	7.50			-1	
Registrars	2	2.00	-0	-16.7%	+1	+0
SHO/ Interns	1	0.95	-0	-2.1%	-1	-0
Medical/ Dental, other	6	6.23				-1
Medical & Dental	17	17	-0	-2.5%	-1	-0
Nurse/ Midwife Manager	260	262.73	+2	+0.9%	+2	+2
Nurse/ Midwife Specialist & AN/MP	17	17.23	-0	-1.1%	+2	-0
Staff Nurse/ Staff Midwife	795	796.46	+1	+0.2%	+24	+25
Public Health Nurse	10	10.26	-0	-0.3%	+3	+4
Pre-registration Nurse/ Midwife Intern	30	30.46	+0	+0.8%	+28	+15
Pre-registration Nurse Intern (COVID-19)	1		-1	-100.0%	-9	-31
Nursing/ Midwifery awaiting registration	2		-2	-100.0%	-13	-11
Nursing/ Midwifery Student	33	30.46	-3	-8.3%	+6	-26
Nursing/ Midwifery other	5	4.74	-0	-2.7%	-2	-3
Nursing & Midwifery	1,121	1,122	+1	+0.0%	+36	+1
Therapy Professions	382	377.05	-5	-1.3%	+4	+20
Health Science/ Diagnostics	5	4.68	-0	-3.9%	+1	+1
Social Care	97	97.28	-0	-0.1%	-3	+4
Social Workers	66	64.43	-2	-2.8%	-2	+1
Psychologists	93	91.31	-2	-1.6%	+9	+18
H&SC, Other	22	22.07	+0	+0.4%	-3	-4
Health & Social Care Professionals	665	657	-8	-1.3%	+5	+40
Management (VIII & above)	62	57.97	-4	-7.2%	+0	+2
Administrative/ Supervisory (V to VII)	192	188.05	-3	-1.8%	+20	+34
Clerical (III & IV)	207	204.63	-2	-1.0%	+6	+13
Management & Administrative	461	451	-10	-2.2%	+26	+49
Support	73	71.07	-2	-2.1%	-17	-14
Maintenance/ Technical	24	24.82	+1	+4.2%	-1	-0
General Support	96	96	-1	-0.6%	-18	-14
Health Care Assistants	1,523	1,522.63	-0	-0.0%	-34	+8
Home Help	88	87.90	+0	+0.1%	-6	-15
Care, other	161	161.76	+1	+0.8%	+22	+53
Patient & Client Care	1,771	1,772	+1	+0.1%	-18	+47

Section 38

Aug 2021 (Dec 2020 figure: 14,860)	WTE Jul 2021	WTE Aug 2021	WTE change since Jul 21	% change since Jul 21	WTE change since Dec 20	WTE change since Aug 20
Overall	15,200	15,232	+32	+0.2%	+372	+724
Consultants	13	15.14	+2	+14.9%	-1	-1
Registrars	9	8.00	-1	-6.9%	+1	+1
SHO/ Interns	7	6.68	-1	-9.6%	-0	-0
Medical/ Dental, other	8	8.09				
Medical & Dental	37	38	+1	+1.8%	-0	+0
Nurse/ Midwife Manager	651	642.26	-9	-1.4%	+6	+7
Nurse/ Midwife Specialist & AN/MP	49	48.72	+0	+0.1%	-1	+2
Staff Nurse/ Staff Midwife	1,788	1,773.91	-15	-0.8%	-47	+23
Pre-registration Nurse/ Midwife Intern	47	53.26	+6	+12.3%	+53	+53
Pre-registration Nurse Intern (COVID-19)	1	0.94	+0	+25.3%	-22	-94
Post-registration Nurse/ Midwife Student				-100.0%		-4
Nursing/ Midwifery Student	48	54.20	+6	+12.5%	+31	-44
Nursing/ Midwifery other	19	17.59	-1	-5.4%	+0	+1
Nursing & Midwifery	2,555	2,537	-18	-0.7%	-10	-12
Therapy Professions	426	431.60	+6	+1.3%	+9	+9
Health Science/ Diagnostics	16	16.00				
Social Care	2,799	2,824.50	+26	+0.9%	+136	+249
Social Workers	160	161.68	+2	+1.4%	+0	+11
Psychologists	140	140.08	+0	+0.3%	-7	+0
Pharmacy	7	6.79	-0	-6.5%	+1	+1
H&SC, Other	48	48.26	-0	-0.0%	-2	-8
Health & Social Care Professionals	3,595	3,629	+34	+0.9%	+137	+263
Management (VIII & above)	155	156.17	+2	+1.1%	+10	+16
Administrative/ Supervisory (V to VII)	368	371.23	+3	+0.8%	+13	+22
Clerical (III & IV)	496	495.93	-0	-0.1%	+9	+10
Management & Administrative	1,019	1,023	+4	+0.4%	+32	+48
General Support	672	665	-7	-1.0%	-16	-55
Patient & Client Care	7,321	7,340	+19	+0.3%	+229	+480



Social Care Disability Services Employment by CHO Aug 2021

CHO 1

Aug 2021 (Dec 2020 figure: 1,547)	WTE Jul 2021	WTE Aug 2021	WTE change since Jul 21	% change since Jul 21	WTE change since Dec 20	WTE change since Aug 20
Overall	1,539	1,546	+7	+0.4%	-1	+4
Medical/ Dental, other	3	3				-0
Medical & Dental	3	3				-0
Nurse/ Midwife Manager	110	112	+2	+1.6%	+6	+5
Nurse/ Midwife Specialist & AN/MP	10	9	-0	-2.0%	+0	-1
Staff Nurse/ Staff Midwife	341	347	+6	+1.7%	+18	+24
Public Health Nurse	1	1			+1	+1
Public Health Nurse	1	1			+1	+1
Pre-registration Nurse/ Midwife Intern	19	20	+0	+0.4%	+17	+20
Pre-registration Nurse Intern (COVID-19)	1		-1	-100.0%		-28
Nursing/ Midwifery awaiting registration				-100.0%	-11	-11
Nursing/ Midwifery Student	20	20	-1	-4.5%	+2	-20
Nursing/ Midwifery other	2	2			-2	-3
Nursing & Midwifery	484	491	+7	+1.3%	+25	+7
Therapy Professions	42	43	+1	+2.3%	-1	+1
Social Care	11	10	-1	-4.9%	-1	+2
Social Workers	17	16	-1	-5.3%	-2	-3
Psychologists	13	13	+0	+1.2%	+6	+8
H&SC, Other	8	8	+1	+9.7%	-1	-2
Health & Social Care Professionals	91	91	+0	+0.4%	+0	+5
Management (VIII & above)	16	12	-4	-23.2%	-4	-3
Administrative/ Supervisory (V to VII)	39	41	+1	+3.8%	+6	+7
Clerical (III & IV)	50	50	-0	-0.1%	-3	-0
Management & Administrative	105	103	-2	-2.2%	-1	+4
Support	34	33	-1	-1.7%	-16	-17
Maintenance/ Technical	4	5	+1	+25.0%	-1	-1
General Support	38	38	+0	+1.2%	-17	-18
Health Care Assistants	758	757	-1	-0.1%	-18	-6
Home Help	13	13	+0	+0.4%	-1	-1
Care, other	48	50	+2	+4.4%	+9	+12
Patient & Client Care	819	821	+2	+0.2%	-9	+5

CHO 2

Aug 2021 (Dec 2020 figure: 1,516)	WTE Jul 2021	WTE Aug 2021	WTE change since Jul 21	% change since Jul 21	WTE change since Dec 20	WTE change since Aug 20
Overall	1,555	1,556	+1	+0.0%	+40	+73
Consultants	3	3	+1	+17.2%		
Registrars	2	2				
Medical/ Dental, other	1	1				
Medical & Dental	6	6	+1	+8.5%		
Nurse/ Midwife Manager	80	74	-5	-6.6%	-4	-3
Nurse/ Midwife Specialist & AN/MP	6	6	-0	-0.9%	+1	+1
Staff Nurse/ Staff Midwife	159	161	+2	+1.3%	-8	-3
<i>Pre-registration Nurse Intern (COVID-19)</i>				-100.0%		-1
Nursing/ Midwifery Student				-100.0%	-1	-1
Nursing & Midwifery	245	241	-3	-1.3%	-12	-5
Therapy Professions	33	34	+1	+3.3%	-0	+3
Social Care	264	265	+0	+0.2%	+21	+26
Social Workers	26	27	+1	+2.4%	+1	+4
Psychologists	15	15	-0	-2.6%	+1	-1
H&SC, Other	10	10	+0	+3.0%	-1	-2
Health & Social Care Professionals	349	351	+2	+0.6%	+22	+29
Management (VIII & above)	17	17	+0	+0.5%	+1	+0
Administrative/ Supervisory (V to VII)	47	47	-0	-0.1%	+3	+7
Clerical (III & IV)	46	48	+2	+3.8%	-2	+0
Management & Administrative	111	112	+2	+1.6%	+2	+7
Support	42	37	-5	-12.7%	-6	+2
Maintenance/ Technical	13	13				-0
General Support	55	50	-5	-9.7%	-6	+2
Health Care Assistants	659	665	+6	+0.9%	+40	+37
Care, other	131	130	-1	-0.9%	-6	+4
Patient & Client Care	790	795	+5	+0.6%	+34	+40

CHO 3

Aug 2021 (Dec 2020 figure: 1,947)	WTE Jul 2021	WTE Aug 2021	WTE change since Jul 21	% change since Jul 21	WTE change since Dec 20	WTE change since Aug 20
Overall	1,976	1,983	+6	+0.3%	+35	+88
Consultants	0	1	+1	+1020.0%	-1	-0
Medical/ Dental, other	1	1				
Medical & Dental	1	2	+1	+99.0%	-1	-0
Nurse/ Midwife Manager	76	74	-1	-1.7%	-1	-4
Nurse/ Midwife Specialist & AN/MP	9	9			-2	-2
Staff Nurse/ Staff Midwife	252	251	-1	-0.4%	-19	-2
Pre-registration Nurse/ Midwife Intern	8	8			-4	+8
Pre-registration Nurse Intern (COVID-19)	0	0	-0	-39.4%	+0	-2
Nursing/ Midwifery Student	8	8	-0	-1.6%	+7	+6
Nursing/ Midwifery other	4	4				
Nursing & Midwifery	349	346	-2	-0.7%	-15	-2
Therapy Professions	79	79	-0	-0.6%	-5	-0
Health Science/ Diagnostics	3	3	-0	-3.4%	+1	+1
Social Care	286	286			+2	+21
Social Workers	18	18	-0	-0.8%	+1	+5
Psychologists	19	19	+0	+1.0%	-1	-1
H&SC, Other	10	10	-0	-0.2%	-1	-2
Health & Social Care Professionals	416	416	-1	-0.1%	-3	+23
Management (VIII & above)	8	8				
Administrative/ Supervisory (V to VII)	44	44	+0	+0.5%	-1	+0
Clerical (III & IV)	58	59	+1	+1.5%	+0	-1
Management & Administrative	110	111	+1	+1.0%	-0	-1
Support	54	53	-2	-2.9%	-1	-2
Maintenance/ Technical	20	20			+1	+2
General Support	74	73	-2	-2.1%	+0	-0
Health Care Assistants	838	842	+4	+0.4%	+42	+48
Care, other	187	193	+5	+2.7%	+11	+20
Patient & Client Care	1,026	1,035	+9	+0.9%	+54	+68

CHO 4

Aug 2021 (Dec 2020 figure: 2,556)	WTE Jul 2021	WTE Aug 2021	WTE change since Jul 21	% change since Jul 21	WTE change since Dec 20	WTE change since Aug 20
Overall	2,616	2,630	+14	+0.5%	+74	+134
Consultants	3	3				+1
Medical/ Dental, other	0	0				-1
Medical & Dental	3	3				+0
Nurse/ Midwife Manager	84	88	+4	+4.2%	-3	-0
Nurse/ Midwife Specialist & AN/MP	13	13			-1	
Staff Nurse/ Staff Midwife	306	297	-8	-2.7%	-15	-4
Pre-registration Nurse/ Midwife Intern	10	10			+4	+10
Pre-registration Nurse Intern (COVID-19)				-100.0%		-28
Nursing/ Midwifery awaiting registration	2		-2	-100.0%	-1	
Nursing/ Midwifery Student	12	10	-2	-16.7%	+0	-18
Nursing/ Midwifery other				-100.0%		-1
Nursing & Midwifery	416	409	-7	-1.6%	-18	-22
Therapy Professions	116	114	-1	-1.3%	+11	+13
Social Care	244	246	+3	+1.2%	+8	+15
Social Workers	26	26	+1	+3.2%	-0	+0
Psychologists	35	35	+0	+0.7%	-1	+2
H&SC, Other	8	8	+0	+1.2%	-2	-2
Health & Social Care Professionals	428	431	+3	+0.6%	+16	+28
Management (VIII & above)	23	22	-1	-3.4%	-0	-0
Administrative/ Supervisory (V to VII)	56	55	-0	-0.5%	-2	+0
Clerical (III & IV)	92	90	-2	-1.8%	+1	+2
Management & Administrative	171	168	-3	-1.6%	-2	+2
Support	143	142	-1	-0.7%	+4	+5
Maintenance/ Technical	12	12			-0	+2
General Support	155	154	-1	-0.7%	+4	+7
Health Care Assistants	1,106	1,137	+30	+2.7%	+78	+99
Care, other	336	328	-8	-2.5%	-4	+20
Patient & Client Care	1,443	1,465	+22	+1.5%	+74	+119

CHO 5

Aug 2021 (Dec 2020 figure: 1,563)	WTE Jul 2021	WTE Aug 2021	WTE change since Jul 21	% change since Jul 21	WTE change since Dec 20	WTE change since Aug 20
Overall	1,621	1,610	-11	-0.7%	+47	+98
Consultants	1	1			+0	
Medical & Dental	1	1			+0	
Nurse/ Midwife Manager	72	73	+1	+1.0%	+3	+4
Nurse/ Midwife Specialist & AN/MP	3	3			+1	
Staff Nurse/ Staff Midwife	166	164	-2	-1.4%	-4	+4
Public Health Nurse	8	8	-0	-0.4%	+2	+3
Pre-registration Nurse/ Midwife Intern	9	9	+1	+7.3%	+9	+9
Pre-registration Nurse Intern (COVID-19)				-100.0%		-7
Post-registration Nurse/ Midwife Student				-100.0%		-4
Nursing/ Midwifery awaiting registration				-100.0%	-2	
Nursing/ Midwifery Student	9	9	+1	+7.3%	+8	-2
Nursing Education/Clinical	1	1	+0	+2.4%	+1	+1
Nursing/ Midwifery other	1	1	+0	+2.4%	+1	+1
Nursing & Midwifery	259	258	-1	-0.4%	+11	+9
Therapy Professions	72	68	-4	-5.6%	+3	+9
Social Care	138	142	+4	+2.8%	-1	-1
Social Workers	25	25	-0	-1.8%	+0	+4
Psychologists	22	22	-0	-0.8%	+3	+8
H&SC, Other	6	6	+0	+0.0%	+1	-1
Health & Social Care Professionals	263	262	-1	-0.3%	+6	+19
Management (VIII & above)	15	15	-0	-0.5%	+2	+3
Administrative/ Supervisory (V to VII)	51	54	+3	+5.2%	+13	+14
Clerical (III & IV)	62	63	+1	+1.8%	+1	+6
Management & Administrative	127	131	+4	+2.9%	+16	+23
Support	10	10	+0	+0.9%	-2	-4
Maintenance/ Technical	7	7				
General Support	17	17	+0	+0.5%	-2	-4
Health Care Assistants	757	746	-11	-1.4%	+14	+38
Home Help	37	37	-0	-0.2%	-3	-9
Care, other	160	158	-2	-1.3%	+5	+22
Patient & Client Care	954	941	-13	-1.4%	+16	+51

CHO 6

Aug 2021 (Dec 2020 figure: 1,217)	WTE Jul 2021	WTE Aug 2021	WTE change since Jul 21	% change since Jul 21	WTE change since Dec 20	WTE change since Aug 20
Overall	1,230	1,227	-3	-0.2%	+11	+40
Consultants	3	3				
Registrars	0		-0	-100.0%		
SHO/ Interns	1	1	-0	-2.1%	+1	+1
Medical/ Dental, other	1	1				
Medical & Dental	5	5	-0	-7.8%	+1	+1
Nurse/ Midwife Manager	45	45	+0	+0.3%	+2	+2
Staff Nurse/ Staff Midwife	137	138	+1	+0.7%	-4	+2
Nursing & Midwifery	182	184	+1	+0.6%	-2	+5
Therapy Professions	44	44	+0	+1.1%	+2	+3
Social Care	373	378	+5	+1.3%	+17	+46
Social Workers	11	10	-1	-9.0%	+0	+1
Psychologists	14	13	-1	-9.0%	-1	-3
H&SC, Other	1	1	-0	-18.8%	-0	+0
Health & Social Care Professionals	444	446	+3	+0.6%	+18	+48
Management (VIII & above)	31	33	+2	+6.0%	+3	+2
Administrative/ Supervisory (V to VII)	56	55	-1	-1.8%	+1	+0
Clerical (III & IV)	54	52	-2	-4.5%	-4	-13
Management & Administrative	142	140	-2	-1.1%	+0	-11
Support	23	22	-0	-2.1%	-3	-23
Maintenance/ Technical	6	6			+1	
General Support	29	28	-0	-1.6%	-2	-23
Health Care Assistants	187	185	-2	-1.0%	+1	+12
Care, other	241	239	-2	-1.0%	-6	+8
Patient & Client Care	428	424	-4	-1.0%	-4	+21

CHO 7

Aug 2021 (Dec 2020 figure: 3,103)	WTE Jul 2021	WTE Aug 2021	WTE change since Jul 21	% change since Jul 21	WTE change since Dec 20	WTE change since Aug 20
Overall	3,217	3,199	-18	-0.6%	+95	+171
Consultants	0	0			-0	-0
Registrars	4	3	-1	-16.2%		
SHO/ Interns	7	7	-1	-9.6%	-0	-0
Medical/ Dental, other	1	1				
Medical & Dental	12	11	-1	-10.5%	-1	-0
Nurse/ Midwife Manager	135	129	-6	-4.1%	+11	+6
Nurse/ Midwife Specialist & AN/MP	4	4				+0
Staff Nurse/ Staff Midwife	393	389	-4	-1.0%	+11	+12
Pre-registration Nurse/ Midwife Intern	8	8			+8	+8
Pre-registration Nurse Intern (COVID-19)				-100.0%		-15
Nursing/ Midwifery Student	8	8			+8	-8
Nursing/ Midwifery other	3	3			+1	+1
Nursing & Midwifery	542	532	-10	-1.8%	+30	+11
Therapy Professions	143	144	+1	+1.0%	+6	-3
Health Science/ Diagnostics	2	2			-1	-1
Social Care	409	411	+2	+0.4%	+22	+44
Social Workers	33	33	+1	+2.3%	+2	+0
Psychologists	32	32	+0	+0.5%	-0	+3
Pharmacy	5	5	-0	-8.9%	+1	+1
H&SC, Other	3	3			+1	+1
Health & Social Care Professionals	626	629	+4	+0.6%	+30	+45
Management (VIII & above)	46	46	-0	-0.3%	+3	+8
Administrative/ Supervisory (V to VII)	96	93	-3	-3.3%	+1	+6
Clerical (III & IV)	107	106	-1	-1.0%	+5	+8
Management & Administrative	249	244	-4	-1.8%	+9	+23
Support	148	149	+1	+0.5%	-6	-9
Maintenance/ Technical	33	33	+0	+1.2%	+1	+1
General Support	181	183	+1	+0.6%	-5	-8
Health Care Assistants	1,195	1,190	-5	-0.4%	+44	+89
Home Help	17	17	+0	+2.7%	-0	-1
Care, other	395	392	-3	-0.7%	-11	+13
Patient & Client Care	1,606	1,599	-8	-0.5%	+32	+101

CHO 8

Aug 2021 (Dec 2020 figure: 2,205)	WTE Jul 2021	WTE Aug 2021	WTE change since Jul 21	% change since Jul 21	WTE change since Dec 20	WTE change since Aug 20
Overall	2,265	2,273	+8	+0.3%	+67	+107
Consultants				-100.0%	-1	-1
Registrars	1	1				-1
Medical/ Dental, other	1	1				
Medical & Dental	2	2			-1	-2
Nurse/ Midwife Manager	116	116	-1	-0.5%	-4	+1
Nurse/ Midwife Specialist & AN/MP	6	6	+0	+1.6%	+0	-1
Staff Nurse/ Staff Midwife	321	319	-2	-0.7%	+7	+10
Public Health Nurse	1	1			-0	
Pre-registration Nurse/ Midwife Intern	6	11	+5	+91.0%	+11	+11
Pre-registration Nurse Intern (COVID-19)	0	1	+0	+76.2%	+1	-28
Nursing/ Midwifery Student	6	12	+6	+90.0%	+8	-16
Nursing/ Midwifery other	7	7	-0	-0.1%	+0	+1
Nursing & Midwifery	458	461	+3	+0.7%	+12	-6
Therapy Professions	91	90	-0	-0.5%	-8	-1
Health Science/ Diagnostics	2	2	-0	-4.7%	-0	-0
Social Care	382	387	+5	+1.4%	+7	+11
Social Workers	25	25	+0	+0.2%	+1	+1
Psychologists	25	25	+0	+0.0%	+3	+6
H&SC, Other	7	7	-1	-7.5%	+0	-0
Health & Social Care Professionals	532	536	+4	+0.8%	+4	+17
Management (VIII & above)	15	15	-0	-0.1%	+2	+2
Administrative/ Supervisory (V to VII)	53	53	+0	+0.2%	-3	-5
Clerical (III & IV)	102	99	-2	-2.4%	+12	+12
Management & Administrative	169	167	-2	-1.4%	+10	+9
Support	40	39	-1	-2.5%	-2	-3
Maintenance/ Technical	14	14	+0	+0.0%	+0	-1
General Support	54	53	-1	-1.8%	-2	-4
Health Care Assistants	911	919	+8	+0.8%	+47	+89
Home Help	21	21	-0	-1.7%	-2	-3
Care, other	117	114	-3	-2.8%	+0	+5
Patient & Client Care	1,050	1,054	+4	+0.4%	+45	+92

CHO 9

Aug 2021 (Dec 2020 figure: 3,285)	WTE Jul 2021	WTE Aug 2021	WTE change since Jul 21	% change since Jul 21	WTE change since Dec 20	WTE change since Aug 20
Overall	3,306	3,317	+11	+0.3%	+33	+131
Consultants	11	11	+0	+4.0%	+0	+0
Registrars	4	4	-0	-0.2%	+2	+2
SHO/ Interns				-100.0%	-2	-1
Medical/ Dental, other	6	6				
Medical & Dental	21	21	+0	+2.0%	+0	+1
Nurse/ Midwife Manager	194	193	-0	-0.1%	-2	-1
Nurse/ Midwife Specialist & AN/MP	14	14			+2	+4
Staff Nurse/ Staff Midwife	508	504	-4	-0.8%	-8	+4
Pre-registration Nurse/ Midwife Intern	18	18			+10	+3
Pre-registration Nurse Intern (COVID-19)				-100.0%		-16
Nursing/ Midwifery Student	18	18			+5	-13
Nursing/ Midwifery other	7	6	-1	-15.6%	-2	-2
Nursing & Midwifery	742	736	-6	-0.7%	-5	-8
Therapy Professions	189	192	+3	+1.7%	+5	+5
Health Science/ Diagnostics	14	14			+1	+1
Social Care	790	797	+7	+0.9%	+57	+89
Social Workers	44	45	+1	+1.3%	-5	-1
Psychologists	57	57	+0	+0.1%	-7	-3
Pharmacy	2	2				
H&SC, Other	17	17	-0	-1.5%	-2	-4
Health & Social Care Professionals	1,113	1,123	+11	+0.9%	+50	+88
Management (VIII & above)	46	46	-0	-0.1%	+4	+5
Administrative/ Supervisory (V to VII)	115	115	-0	-0.3%	+14	+26
Clerical (III & IV)	130	131	+2	+1.2%	+5	+10
Management & Administrative	290	292	+1	+0.4%	+24	+41
Support	143	143	+0	+0.3%	-2	-19
Maintenance/ Technical	21	21	+0	+0.5%	-2	-1
General Support	164	164	+1	+0.3%	-4	-20
Health Care Assistants	879	882	+3	+0.3%	-29	+26
Care, other	97	99	+1	+1.5%	-3	+3
Patient & Client Care	977	981	+4	+0.4%	-32	+29

other Community Services

Aug 2021 (Dec 2020 figure: 6)	WTE Jul 2021	WTE Aug 2021	WTE change since Jul 21	% change since Jul 21	WTE change since Dec 20	WTE change since Aug 20
Overall	6	6				
Management (VIII & above)	1	1				
Administrative/ Supervisory (V to VII)	3	3				
Clerical (III & IV)	2	2			-0	-0
Management & Administrative	6	6				

Social Care Disability Services Employment by CHO & Admin : Aug 2021

Aug 2021 (Dec 2020 figure: 18,944)	WTE Jul 2021	WTE Aug 2021	WTE change since Jul 21	% change since Jul 21	WTE change since Dec 20	WTE change since Aug 20
Overall	19,331	19,346	+15	+0.1%	+402	+847
CHO 1	1,539	1,546	+7	+0.4%	-1	+4
Health Service Executive	223	222	-2	-0.7%	+4	+7
Bros. of Charity, West Region	1,332	1,334	+2	+0.2%	+36	+66
Section 38 Voluntary Agencies	1,332	1,334	+2	+0.2%	+36	+66
CHO 2	1,555	1,556	+1	+0.0%	+40	+73
Health Service Executive	142	140	-2	-1.7%	-5	+3
Bros. of Charity, Clare	399	406	+7	+1.7%	+34	+53
Bros. of Charity, Limerick	597	599	+2	+0.3%	+6	+22
Daughters of Charity, Limerick	545	545	+0	+0.0%	-4	+5
Daughters of Charity, Roscrea	292	293	+1	+0.2%	+4	+6
Section 38 Voluntary Agencies	1,834	1,843	+9	+0.5%	+40	+85
CHO 3	1,976	1,983	+6	+0.3%	+35	+88
Health Service Executive	328	329	+1	+0.5%	+16	+38
Bros. of Charity, Southern	803	814	+11	+1.4%	+39	+52
Cope Foundation	1,157	1,156	-0	-0.0%	+10	+31
St. John of God, Kerry	328	330	+2	+0.5%	+10	+13
Section 38 Voluntary Agencies	2,288	2,300	+13	+0.5%	+58	+96
CHO 4	2,616	2,630	+14	+0.5%	+74	+134
Health Service Executive	430	425	-5	-1.2%	+31	+51
Bros. of Charity, Waterford	688	685	-3	-0.4%	+17	+46
Carriglea Cairde Services	221	217	-3	-1.5%	+4	+8
St. Patrick's, Kilkenny	283	283	+0	+0.1%	-4	-7
Section 38 Voluntary Agencies	1,191	1,185	-6	-0.5%	+17	+47
CHO 5	1,621	1,610	-11	-0.7%	+47	+98
Health Service Executive	243	240	-3	-1.3%	-4	+2
Children's Sunshine Home	58	58			+2	+3
St. John of God (IDS)	452	447	-5	-1.1%	-21	-2
Sunbeam House Services	478	483	+5	+1.1%	+33	+38
Section 38 Voluntary Agencies	987	987	+0	+0.0%	+14	+38
CHO 6	1,230	1,227	-3	-0.2%	+11	+40
Health Service Executive	131	128	-3	-2.1%	-7	+3
Cheeverstown House	419	418	-1	-0.3%	+23	+25
Kare, Newbridge, Co Kildare	395	402	+7	+1.9%	+26	+56
Peamount Hospital (Newcastle)	535	536	+0	+0.1%	+53	+5
Stewart's Hospital, (Palmerstown)	939	936	-3	-0.3%	+22	+70
St. John of God Liffey Services	798	779	-19	-2.3%	-22	+13
Section 38 Voluntary Agencies	3,086	3,070	-15	-0.5%	+102	+168
CHO 7	3,217	3,199	-18	-0.6%	+95	+171
Health Service Executive	604	598	-6	-1.0%	-13	+0
Muiriosa Foundation, Laois/Offaly	352	355	+3	+0.9%	+35	+52
Muiriosa Foundation, Longford/Westmeath	294	302	+8	+2.8%	+18	+24
Muiriosa Foundation, South Kildare	352	363	+11	+3.1%	+21	+21
St. John of God, Drumcar	663	654	-8	-1.2%	+6	+11

Aug 2021 (Dec 2020 figure: 18,944)	WTE Jul 2021	WTE Aug 2021	WTE change since Jul 21	% change since Jul 21	WTE change since Dec 20	WTE change since Aug 20
Overall	19,331	19,346	+15	+0.1%	+402	+847
Section 38 Voluntary Agencies	1,661	1,675	+14	+0.8%	+80	+107
CHO 8	2,265	2,273	+8	+0.3%	+67	+107
Health Service Executive	486	481	-5	-1.0%	+8	+15
Central Remedial Clinic	293	296	+4	+1.3%	+1	+15
Daughters of Charity, Dublin	1,080	1,084	+4	+0.4%	+21	+34
St. Michael's House, Dublin	1,448	1,456	+8	+0.6%	+3	+67
Section 38 Voluntary Agencies	2,821	2,837	+16	+0.6%	+24	+116
CHO 9	3,306	3,317	+11	+0.3%	+33	+131
other Community Services	6	6				

Social Care Disability Services Employment by CHO Aug 2021

Bros. of Charity, Clare

Aug 2021 (Dec 2020 figure: 372)	WTE Jul 2021	WTE Aug 2021	WTE change since Jul 21	% change since Jul 21	WTE change since Dec 20	WTE change since Aug 20
Overall	399	406	+7	+1.7%	+34	+53
Consultants	0	0	+0	+20.0%	-0	-0
Medical & Dental	0	0	+0	+20.0%	-0	-0
Staff Nurse/ Staff Midwife	3	2	-1	-31.8%	-0	-0
Pre-registration Nurse Intern (COVID-19)	0	0	-0	-39.4%	+0	-1
Nursing/ Midwifery Student	0	0	-0	-39.4%	-1	-1
Nursing & Midwifery	3	2	-1	-32.6%	-1	-1
Social Care	87	88	+0	+0.4%	+2	+5
Social Workers	3	3				+2
Psychologists	3	3				
H&SC, Other	3	3			-1	-1
Health & Social Care Professionals	96	96	+0	+0.3%	+1	+6
Management (VIII & above)	1	1				
Administrative/ Supervisory (V to VII)	5	5	+0	+1.2%	+0	
Clerical (III & IV)	5	6	+1	+9.9%	+1	+1
Management & Administrative	11	12	+1	+5.1%	+1	+1
Health Care Assistants	256	260	+5	+1.8%	+28	+42
Care, other	34	36	+2	+5.8%	+5	+4
Patient & Client Care	290	296	+7	+2.3%	+33	+46

Aug 2021 (Dec 2020 figure: 592)	WTE Jul 2021	WTE Aug 2021	WTE change since Jul 21	% change since Jul 21	WTE change since Dec 20	WTE change since Aug 20
Overall	597	599	+2	+0.3%	+6	+22
Consultants		1	+1	-100.0%	-1	-0
Medical & Dental		1	+1	-100.0%	-1	-0
Nurse/ Midwife Manager	27	27	-0	-1.0%	-1	-2
Nurse/ Midwife Specialist & AN/MP	4	4			-0	-0
Staff Nurse/ Staff Midwife	87	87	+0	+0.5%	-11	-2
Nursing & Midwifery	118	118	+0	+0.1%	-12	-4
Therapy Professions	15	15	-0	-0.8%	-0	-0
Social Care	105	103	-2	-2.1%	-2	+3
Social Workers	6	7	+1	+15.2%	+2	+3
Psychologists	6	6	-0	-1.2%	+0	-0
H&SC, Other	0	1	+0	+22.4%		-1
Health & Social Care Professionals	133	132	-1	-1.0%	+1	+6
Management (VIII & above)	2	2				
Administrative/ Supervisory (V to VII)	7	7	+0	+1.2%	+1	+1
Clerical (III & IV)	10	10	-0	-1.5%	-1	-1
Management & Administrative	19	18	-0	-0.4%	-0	+0
Support	8	7	-1	-8.5%	+1	+1
Maintenance/ Technical	2	2				
General Support	10	9	-1	-6.7%	+1	+1
Health Care Assistants	216	214	-2	-1.2%	+10	+5
Care, other	102	107	+5	+4.8%	+8	+15
Patient & Client Care	318	321	+2	+0.7%	+18	+19

Aug 2021 (Dec 2020 figure: 776)	WTE Jul 2021	WTE Aug 2021	WTE change since Jul 21	% change since Jul 21	WTE change since Dec 20	WTE change since Aug 20
Overall	803	814	+11	+1.4%	+39	+52
Nurse/ Midwife Manager	12	12	-0	-1.1%	-3	-3
Nurse/ Midwife Specialist & AN/MP	2	2			-1	-1
Staff Nurse/ Staff Midwife	54	56	+2	+3.3%	+0	-0
Nursing & Midwifery	68	70	+2	+2.5%	-4	-4
Therapy Professions	45	44	-1	-1.2%	-2	+0
Social Care	127	128	+1	+0.7%	+5	+0
Social Workers	16	17	+1	+3.2%	-0	+0
Psychologists	20	20	+0	+0.8%	-0	+2
Health & Social Care Professionals	207	209	+1	+0.5%	+2	+3
Management (VIII & above)	7	6	-1	-10.9%	-2	-2
Administrative/ Supervisory (V to VII)	12	11	-1	-7.6%	+1	+1
Clerical (III & IV)	36	36	-1	-2.4%	+0	+1
Management & Administrative	55	52	-2	-4.5%	-1	-0
Support	12	12	+0	+1.2%	-2	-2
Maintenance/ Technical	3	3				+1
General Support	15	15	+0	+1.0%	-2	-1
Health Care Assistants	247	269	+22	+8.8%	+47	+41
Care, other	211	200	-11	-5.3%	-5	+12
Patient & Client Care	458	469	+11	+2.3%	+42	+53

Aug 2021 (Dec 2020 figure: 668)	WTE Jul 2021	WTE Aug 2021	WTE change since Jul 21	% change since Jul 21	WTE change since Dec 20	WTE change since Aug 20
Overall	688	685	-3	-0.4%	+17	+46
Consultants	1	1			+0	
Medical & Dental	1	1			+0	
Nurse/ Midwife Manager	25	24	-1	-5.5%	+1	+1
Staff Nurse/ Staff Midwife	44	43	-1	-3.2%	-7	-2
Pre-registration Nurse/ Midwife Intern	6	6	+0	+8.5%	+6	+6
Pre-registration Nurse Intern (COVID-19)				-100.0%		-7
Nursing/ Midwifery Student	6	6	+0	+8.5%	+6	-1
Nursing & Midwifery	75	73	-2	-3.1%	+0	-2
Therapy Professions	2	2			+1	-1
Social Care	71	73	+3	+3.9%	+3	+5
Social Workers	9	9			+1	+2
Psychologists	4	4				
H&SC, Other	4	4			+1	+0
Health & Social Care Professionals	90	93	+3	+3.0%	+6	+6
Management (VIII & above)	5	5				
Administrative/ Supervisory (V to VII)	16	21	+4	+26.6%	+5	+5
Clerical (III & IV)	23	23	-0	-1.7%	-4	-1
Management & Administrative	45	49	+4	+8.8%	+1	+4
Support	1	2	+0	+7.5%	+0	+0
Maintenance/ Technical	3	3				
General Support	4	5	+0	+2.5%	+0	+0
Health Care Assistants	380	371	-9	-2.3%	+9	+31
Care, other	93	95	+2	+1.8%	+1	+7
Patient & Client Care	473	466	-7	-1.5%	+10	+38

Carriglea Cairde Services

Aug 2021 (Dec 2020 figure: 214)	WTE Jul 2021	WTE Aug 2021	WTE change since Jul 21	% change since Jul 21	WTE change since Dec 20	WTE change since Aug 20
Overall	221	217	-3	-1.5%	+4	+8
Nurse/ Midwife Manager	13	13	+0	+0.2%	-0	+0
Staff Nurse/ Staff Midwife	25	25	+1	+2.1%	-2	+0
<i>Post-registration Nurse/ Midwife Student</i>				-100.0%		-4
Nursing/ Midwifery Student				-100.0%		-4
Nursing & Midwifery	37	38	+1	+1.4%	-2	-4
Social Care	31	30	-0	-0.2%	+0	-3
Health & Social Care Professionals	31	30	-0	-0.2%	+0	-3
Management (VIII & above)	2	2				
Administrative/ Supervisory (V to VII)	3	3				
Clerical (III & IV)	6	6	-0	-5.0%	-0	-0
Management & Administrative	11	11	-0	-2.8%	-0	-0
Support	5	5	+0	+0.2%	-1	-2
Maintenance/ Technical	2	2			+1	+1
General Support	8	8	+0	+0.1%	-0	-1
Health Care Assistants	84	85	+1	+0.6%	+5	+11
Care, other	50	46	-4	-8.1%	+1	+4
Patient & Client Care	134	130	-4	-2.6%	+6	+15

Central Remedial Clinic

Aug 2021 (Dec 2020 figure: 296)	WTE Jul 2021	WTE Aug 2021	WTE change since Jul 21	% change since Jul 21	WTE change since Dec 20	WTE change since Aug 20
Overall	293	296	+4	+1.3%	+1	+15
Consultants	1	1			-1	-1
Medical/ Dental, other	0	0				
Medical & Dental	1	1			-1	-1
Nurse/ Midwife Manager	2	3	+1	+43.7%	+1	+1
Nurse/ Midwife Specialist & AN/MP	2	2				
Staff Nurse/ Staff Midwife	3	3			-1	-1
Nursing/ Midwifery other	1	1				
Nursing & Midwifery	8	9	+1	+12.7%	-0	-0
Therapy Professions	72	75	+3	+4.0%	-3	+1
Health Science/ Diagnostics	14	14			+1	+1
Social Workers	7	7			-1	-2
Psychologists	11	11	-1	-4.4%	-2	+0
Health & Social Care Professionals	105	107	+2	+2.3%	-5	+0
Management (VIII & above)	7	7				+2
Administrative/ Supervisory (V to VII)	15	15				
Clerical (III & IV)	34	34				+2
Management & Administrative	57	57				+4
Support	13	13			+0	-2
Maintenance/ Technical	2	2				+1
General Support	15	15			+0	-1
Health Care Assistants	59	59	+0	+0.7%	+1	+3
Care, other	49	49			+5	+9
Patient & Client Care	108	108	+0	+0.4%	+6	+13

Aug 2021 (Dec 2020 figure: 395)	WTE Jul 2021	WTE Aug 2021	WTE change since Jul 21	% change since Jul 21	WTE change since Dec 20	WTE change since Aug 20
Overall	419	418	-1	-0.3%	+23	+25
Consultants				-100.0%	-0	-0
Medical/ Dental, other	1	1				
Medical & Dental	1	1			-0	-0
Nurse/ Midwife Manager	33	32	-2	-4.5%	+5	+3
Nurse/ Midwife Specialist & AN/MP	2	2				
Staff Nurse/ Staff Midwife	100	102	+2	+2.0%	-4	+0
Nursing & Midwifery	135	136	+1	+0.4%	+1	+3
Therapy Professions	11	12	+1	+8.8%	-1	
Social Care	43	43			+9	+10
Social Workers	5	5			+1	+1
Psychologists	3	3			-2	-2
Pharmacy	0		-0	-100.0%	-0	-0
H&SC, Other	2	2				
Health & Social Care Professionals	64	65	+1	+1.0%	+6	+8
Management (VIII & above)	5	5			+2	+3
Administrative/ Supervisory (V to VII)	16	15	-1	-6.1%	+1	+1
Clerical (III & IV)	15	15			+3	+3
Management & Administrative	36	35	-1	-2.7%	+5	+6
Support	25	25			-2	-2
Maintenance/ Technical	4	4				
General Support	29	29			-2	-2
Health Care Assistants	140	139	-2	-1.1%	+10	+9
Care, other	12	12			+2	+1
Patient & Client Care	153	151	-2	-1.0%	+12	+9

Children's Sunshine Home

Aug 2021 (Dec 2020 figure: 56)	WTE Jul 2021	WTE Aug 2021	WTE change since Jul 21	% change since Jul 21	WTE change since Dec 20	WTE change since Aug 20
Overall	58	58			+2	+3
Nurse/ Midwife Manager	8	8				
Staff Nurse/ Staff Midwife	18	18				+1
Nursing & Midwifery	26	26				+1
Therapy Professions	2	2			+1	+0
Social Workers				-100.0%	-1	-1
Health & Social Care Professionals	2	2			-0	-1
Management (VIII & above)	3	3			+1	+1
Administrative/ Supervisory (V to VII)	4	4				
<i>General Administrative (III & IV)</i>	1	1				
Clerical (III & IV)	1	1				
Management & Administrative	8	8			+1	+1
Support	3	3				
General Support	3	3				
Health Care Assistants	14	14			+1	+1
Care, other	5	5				
Patient & Client Care	19	19			+1	+1

Aug 2021 (Dec 2020 figure: 1,147)	WTE Jul 2021	WTE Aug 2021	WTE change since Jul 21	% change since Jul 21	WTE change since Dec 20	WTE change since Aug 20
Overall	1,157	1,156	-0	-0.0%	+10	+31
Nurse/ Midwife Manager	42	46	+4	+9.5%	+4	+5
Nurse/ Midwife Specialist & AN/MP	11	11				+1
Staff Nurse/ Staff Midwife	173	164	-9	-5.2%	-13	-4
Pre-registration Nurse/ Midwife Intern	9	9			+3	+9
Pre-registration Nurse Intern (COVID-19)				-100.0%		-26
Nursing/ Midwifery Student	9	9			+1	-17
Nursing/ Midwifery other				-100.0%		-1
Nursing & Midwifery	235	230	-5	-2.1%	-8	-16
Therapy Professions	37	37			-0	
Social Care	43	43				+9
Social Workers	9	9				
Psychologists	11	11				
H&SC, Other	3	3				
Health & Social Care Professionals	102	102			-0	+9
Management (VIII & above)	7	7				
Administrative/ Supervisory (V to VII)	19	19			-4	-0
Clerical (III & IV)	26	26				+0
Management & Administrative	52	52			-4	+0
Support	85	85			+7	+8
Maintenance/ Technical	7	7			+0	+1
General Support	92	92			+7	+9
Health Care Assistants	598	603	+5	+0.8%	+16	+28
Care, other	78	78			-2	+0
Patient & Client Care	677	681	+5	+0.7%	+14	+29

Daughters of Charity, Dublin

Aug 2021 (Dec 2020 figure: 1,063)	WTE Jul 2021	WTE Aug 2021	WTE change since Jul 21	% change since Jul 21	WTE change since Dec 20	WTE change since Aug 20
Overall	1,080	1,084	+4	+0.4%	+21	+34
Consultants	2	2			-0	-0
Senior Registrar	1	1			+1	+1
Registrars	1	1			+1	+1
Medical/ Dental, other	2	2				
Medical & Dental	5	5			+1	+1
Nurse/ Midwife Manager	62	63	+1	+0.8%	+1	+2
Nurse/ Midwife Specialist & AN/MP	12	12			+1	+3
Staff Nurse/ Staff Midwife	181	180	-1	-0.5%	-8	-3
Pre-registration Nurse/ Midwife Intern	11	11			+3	+11
Pre-registration Nurse Intern (COVID-19)				-100.0%		-15
Nursing/ Midwifery Student	11	11			+1	-5
Nursing/ Midwifery other	4	3	-1	-23.1%	-1	-1
Nursing & Midwifery	270	268	-1	-0.5%	-6	-4
Therapy Professions	34	34			+2	+2
Social Care	193	196	+3	+1.5%	+23	+28
Social Workers	12	11	-1	-4.8%	-2	+0
Psychologists	13	14	+1	+7.9%	+3	+2
Pharmacy	2	2				
H&SC, Other	3	3			-2	-2
Health & Social Care Professionals	256	260	+3	+1.3%	+24	+31
Management (VIII & above)	9	10	+1	+11.1%	+1	+1
Administrative/ Supervisory (V to VII)	29	28	-1	-3.5%	+1	+1
Clerical (III & IV)	32	33	+1	+2.4%	+1	+1
Management & Administrative	70	71	+1	+1.1%	+3	+3
Support	77	78	+1	+1.2%	+2	-1
Maintenance/ Technical	7	7			-1	-1
General Support	84	85	+1	+1.1%	+1	-2
Health Care Assistants	367	367	+0	+0.1%	+1	+8
Care, other	28	28			-3	-2
Patient & Client Care	395	395	+0	+0.1%	-2	+5

Aug 2021 (Dec 2020 figure: 549)	WTE Jul 2021	WTE Aug 2021	WTE change since Jul 21	% change since Jul 21	WTE change since Dec 20	WTE change since Aug 20
Overall	545	545	+0	+0.0%	-4	+5
Medical/ Dental, other	1	1				
Medical & Dental	1	1				
Nurse/ Midwife Manager	33	32	-1	-3.0%		-3
Nurse/ Midwife Specialist & AN/MP	5	5			-1	-2
Staff Nurse/ Staff Midwife	145	145	-1	-0.4%	-7	+1
Pre-registration Nurse/ Midwife Intern	8	8			-4	+8
Pre-registration Nurse Intern (COVID-19)				-100.0%		-1
Nursing/ Midwifery Student	8	8			+8	+7
Nursing/ Midwifery other	3	3				
Nursing & Midwifery	194	193	-2	-0.8%	-1	+3
Therapy Professions	14	14			-2	-1
Social Care	66	67	+1	+1.3%	-0	+11
Social Workers	5	5			+0	
Psychologists	6	6			-1	-1
H&SC, Other	6	6			+0	+0
Health & Social Care Professionals	98	99	+1	+0.9%	-2	+9
Management (VIII & above)	2	2				
Administrative/ Supervisory (V to VII)	11	11				+1
Clerical (III & IV)	14	14			-0	-0
Management & Administrative	27	27			-0	+1
Support	42	41	-1	-2.4%	-2	-3
Maintenance/ Technical	4	4				
General Support	47	46	-1	-2.1%	-2	-3
Health Care Assistants	156	158	+2	+1.3%	+2	-5
Care, other	23	23	-0	-0.8%	-0	+1
Patient & Client Care	179	181	+2	+1.0%	+1	-5

Daughters of Charity, Roscrea

Aug 2021 (Dec 2020 figure: 289)	WTE Jul 2021	WTE Aug 2021	WTE change since Jul 21	% change since Jul 21	WTE change since Dec 20	WTE change since Aug 20
Overall	292	293	+1	+0.2%	+4	+6
Nurse/ Midwife Manager	15	15			+0	+0
Staff Nurse/ Staff Midwife	18	18			-1	-1
Nursing/ Midwifery other	1	1				
Nursing & Midwifery	34	34			-1	-0
Therapy Professions	2	2				
Social Care	25	26	+1	+4.0%	+1	+1
Social Workers	1	1				
Psychologists	1	1				
Health & Social Care Professionals	29	30	+1	+3.4%	+1	+1
Management (VIII & above)	1	1				
Administrative/ Supervisory (V to VII)	7	7			-1	
Clerical (III & IV)	7	7			+1	+0
Management & Administrative	15	15			-0	+0
Support	4	4				
Maintenance/ Technical	5	5				
General Support	9	9				
Health Care Assistants	204	203	-0	-0.2%	+3	+4
Care, other	2	2				
Patient & Client Care	205	205	-0	-0.2%	+3	+4

Kare, Newbridge, Co Kildare

Aug 2021 (Dec 2020 figure: 377)	WTE Jul 2021	WTE Aug 2021	WTE change since Jul 21	% change since Jul 21	WTE change since Dec 20	WTE change since Aug 20
Overall	395	402	+7	+1.9%	+26	+56
Nurse/ Midwife Manager	8	8			+1	+1
Staff Nurse/ Staff Midwife	21	20	-1	-4.9%	-6	-3
Nursing & Midwifery	29	28	-1	-3.5%	-5	-2
Therapy Professions	15	16	+1	+9.4%	+3	+4
Social Care	75	78	+3	+3.8%	+10	+17
Social Workers	3	3	-0	-8.4%	-1	-1
Psychologists	8	8			+0	+2
Health & Social Care Professionals	101	105	+4	+3.9%	+13	+22
Management (VIII & above)	6	6				+1
Administrative/ Supervisory (V to VII)	13	13	+0	+3.2%	-0	-0
Clerical (III & IV)	15	16	+1	+3.6%	+2	+2
Management & Administrative	34	35	+1	+2.8%	+1	+3
Support	1	1			-0	-0
General Support	1	1			-0	-0
Health Care Assistants	115	119	+4	+3.5%	+14	+26
Care, other	115	114	-1	-0.5%	+2	+7
Patient & Client Care	230	233	+3	+1.5%	+16	+33

Aug 2021 (Dec 2020 figure: 320)	WTE Jul 2021	WTE Aug 2021	WTE change since Jul 21	% change since Jul 21	WTE change since Dec 20	WTE change since Aug 20
Overall	352	355	+3	+0.9%	+35	+52
Nurse/ Midwife Manager	17	18	+0	+1.9%	+1	+3
Staff Nurse/ Staff Midwife	30	31	+1	+2.5%	+2	+3
Nursing & Midwifery	47	48	+1	+2.3%	+3	+6
Social Care	111	111	+0	+0.4%	+6	+9
Social Workers	4	4			+1	+1
Psychologists	1	1				
H&SC, Other	1	1				
Health & Social Care Professionals	117	117	+0	+0.3%	+7	+10
Management (VIII & above)	3	3				+1
Administrative/ Supervisory (V to VII)	3	3	+0	+1.0%	-2	-2
Clerical (III & IV)	15	14	-1	-6.2%	+3	+3
Management & Administrative	21	20	-1	-4.3%	+1	+2
Support	1	1	-0	-8.8%	-0	-0
Maintenance/ Technical	2	2				
General Support	3	3	-0	-3.5%	-0	-0
Health Care Assistants	136	138	+3	+2.0%	+24	+34
Care, other	28	28	-0	-0.4%	+0	+0
Patient & Client Care	164	166	+3	+1.6%	+24	+34

Aug 2021 (Dec 2020 figure: 284)	WTE Jul 2021	WTE Aug 2021	WTE change since Jul 21	% change since Jul 21	WTE change since Dec 20	WTE change since Aug 20
Overall	294	302	+8	+2.8%	+18	+23
Nurse/ Midwife Manager	7	6	-1	-12.4%	-3	-3
Staff Nurse/ Staff Midwife	4	5	+1	+11.7%	+0	+1
Nursing & Midwifery	11	11	-0	-3.1%	-3	-3
Therapy Professions	2	2	-0	-8.5%	-1	-1
Social Care	94	97	+3	+3.1%	-3	-2
Social Workers	4	4	+0	+0.7%	+0	+0
Psychologists	2	2	-0	-4.1%	-0	-0
H&SC, Other	3	3	-0	-6.6%	+1	+0
Health & Social Care Professionals	106	108	+3	+2.4%	-2	-2
Senior Management (VIII & GM)	1	1			+1	+1
Management (VIII & above)	1	1			+1	+1
Administrative/ Supervisory (V to VII)	4	4				-1
Clerical (III & IV)	12	12			+2	+2
Management & Administrative	17	17			+3	+2
Support	1	1				
Maintenance/ Technical	3	3				
General Support	4	4				
Health Care Assistants	141	147	+6	+4.4%	+21	+28
Care, other	15	15	-0	-2.0%	-1	-2
Patient & Client Care	156	162	+6	+3.8%	+21	+26

Aug 2021 (Dec 2020 figure: 342)	WTE Jul 2021	WTE Aug 2021	WTE change since Jul 21	% change since Jul 21	WTE change since Dec 20	WTE change since Aug 20
Overall	352	363	+11	+3.1%	+21	+21
Nurse/ Midwife Manager	15	15	-0	-0.3%	+2	+2
Nurse/ Midwife Specialist & AN/MP	2	2	+0	+6.5%	+0	+0
Staff Nurse/ Staff Midwife	21	21	-0	-0.7%	-1	-1
Pre-registration Nurse/ Midwife Intern	6	11	+5	+91.0%	+11	+11
Pre-registration Nurse Intern (COVID-19)	0	1	+0	+76.2%	+1	-7
Nursing/ Midwifery Student	6	12	+6	+90.0%	+12	+4
Nursing/ Midwifery other	6	6	+0	+0.8%	-0	+0
Nursing & Midwifery	51	56	+6	+11.2%	+12	+5
Therapy Professions	6	6	-0	-2.0%	-2	-1
Social Care	95	96	+2	+1.9%	+2	+5
Social Workers	1	1			-2	-1
Psychologists	2	2	-0	-4.2%	-0	-0
H&SC, Other	3	3				
Health & Social Care Professionals	106	108	+2	+1.5%	-2	+2
Management (VIII & above)	4	4				-1
Administrative/ Supervisory (V to VII)	12	12	-0	-0.7%	-1	-2
Clerical (III & IV)	23	23	+0	+1.3%	+10	+9
Management & Administrative	39	39	+0	+0.6%	+10	+7
Support	13	13	+0	+0.7%	-1	-1
Maintenance/ Technical	4	4				-1
General Support	17	17	+0	+0.5%	-1	-2
Health Care Assistants	130	135	+4	+3.3%	+2	+9
Care, other	9	8	-1	-9.6%	-1	+0
Patient & Client Care	139	143	+3	+2.4%	+1	+9

Peamount Hospital (Newcastle)

Aug 2021 (Dec 2020 figure: 483)	WTE Jul 2021	WTE Aug 2021	WTE change since Jul 21	% change since Jul 21	WTE change since Dec 20	WTE change since Aug 20
Overall	535	536	+0	+0.1%	+53	+5
Registrars	2	2	-0	-1.0%		
SHO/ Interns	7	7	-1	-9.6%	-0	-0
Medical & Dental	9	9	-1	-7.8%	-0	-0
Nurse/ Midwife Manager	35	33	-2	-4.7%	+5	+3
Nurse/ Midwife Specialist & AN/MP	2	2				+1
Staff Nurse/ Staff Midwife	92	91	-1	-1.2%	+16	+0
<i>Nursing Education/Clinical</i>	1	1			+1	
Nursing/ Midwifery other	1	1				
Nursing & Midwifery	130	127	-3	-2.1%	+21	+4
Therapy Professions	39	39	+1	+1.4%	+11	+0
Health Science/ Diagnostics	2	2			-1	-1
Social Care	5	5			+1	+1
Social Workers	6	6	+1	+14.9%	+1	+0
<i>Psychologists</i>	0	1	+0	+47.1%	+1	+1
Psychologists	0	1	+0	+47.1%	+1	+1
Pharmacy	5	5	-0	-1.8%	+1	+1
Health & Social Care Professionals	56	58	+1	+2.6%	+13	+2
Management (VIII & above)	5	5	-0	-2.2%	+1	+1
Administrative/ Supervisory (V to VII)	19	18	-1	-4.8%	+1	+0
Clerical (III & IV)	19	21	+2	+7.9%	+1	+2
Management & Administrative	43	44	+0	+1.1%	+3	+3
Support	44	45	+1	+1.9%	+0	-1
Maintenance/ Technical	8	9	+0	+4.4%	-0	-1
General Support	52	53	+1	+2.3%	+0	-2
Health Care Assistants	243	244	+1	+0.3%	+18	+1
Care, other	1	1			-2	-2
Patient & Client Care	244	245	+1	+0.3%	+15	-2

Stewart's Hospital, (Palmerstown)

Aug 2021 (Dec 2020 figure: 914)	WTE Jul 2021	WTE Aug 2021	WTE change since Jul 21	% change since Jul 21	WTE change since Dec 20	WTE change since Aug 20
Overall	939	936	-3	-0.3%	+22	+70
Consultants	0	0				
Medical & Dental	0	0				
Nurse/ Midwife Manager	33	33			+2	+2
Staff Nurse/ Staff Midwife	82	80	-2	-1.8%	-0	+6
Pre-registration Nurse/ Midwife Intern	8	8			+8	+8
Pre-registration Nurse Intern (COVID-19)				-100.0%		-15
Nursing/ Midwifery Student	8	8			+8	-8
Nursing/ Midwifery other	2	2			+1	+1
Nursing & Midwifery	124	122	-2	-1.2%	+10	+1
Therapy Professions	19	19			-0	+5
Social Care	16	16	+1	+3.2%	+3	+3
Social Workers	6	6				
Psychologists	5	5			+1	+1
Health & Social Care Professionals	45	45	+1	+1.1%	+4	+9
Management (VIII & above)	17	17			+1	+5
Administrative/ Supervisory (V to VII)	20	20			+4	+3
Clerical (III & IV)	25	23	-2	-8.0%	-2	+1
Management & Administrative	62	60	-2	-3.2%	+3	+10
Support	52	53	+1	+1.9%	-2	-4
Maintenance/ Technical	7	7			+1	+1
General Support	59	60	+1	+1.7%	-1	-3
Health Care Assistants	528	528	-0	-0.0%	+9	+49
Care, other	121	120	-1	-0.8%	-2	+4
Patient & Client Care	649	648	-1	-0.2%	+6	+53

Aug 2021 (Dec 2020 figure: 648)	WTE Jul 2021	WTE Aug 2021	WTE change since Jul 21	% change since Jul 21	WTE change since Dec 20	WTE change since Aug 20
Overall	663	654	-8	-1.2%	+6	+11
Registrars	1	1				
Medical & Dental	1	1				
Nurse/ Midwife Manager	43	43	+0	+0.0%	-4	-2
Nurse/ Midwife Specialist & AN/MP	4	4			+1	+0
Staff Nurse/ Staff Midwife	164	162	-2	-1.4%	+10	+17
<i>Pre-registration Nurse Intern (COVID-19)</i>				-100.0%		-21
Nursing/ Midwifery Student				-100.0%	-4	-21
<i>Nursing Education/Clinical</i>	1	1	-0	-6.0%	+1	+1
Nursing/ Midwifery other	1	1	-0	-6.0%	+1	+1
Nursing & Midwifery	212	209	-2	-1.1%	+3	-5
Therapy Professions	3	3				
Social Care	77	77	+0	+0.5%	+1	-1
Social Workers	2	2				
Psychologists	1	1				
Health & Social Care Professionals	82	83	+0	+0.4%	+1	-1
Management (VIII & above)	2	2			+1	+1
Administrative/ Supervisory (V to VII)	6	5	-0	-5.0%	-0	-0
Clerical (III & IV)	11	11	-0	-1.7%	-0	-0
Management & Administrative	19	19	-0	-2.5%	+0	+0
Support	19	18	-1	-5.2%	-1	-2
Maintenance/ Technical	3	3			+0	+0
General Support	22	21	-1	-4.5%	-1	-2
Health Care Assistants	295	291	-4	-1.2%	+4	+19
Care, other	32	31	-1	-3.6%	-2	-1
Patient & Client Care	327	322	-5	-1.5%	+2	+18

St. John of God (IDS)

Aug 2021 (Dec 2020 figure: 468)	WTE Jul 2021	WTE Aug 2021	WTE change since Jul 21	% change since Jul 21	WTE change since Dec 20	WTE change since Aug 20
Overall	452	447	-5	-1.1%	-21	-2
Medical & Dental	1	1				
Nurse/ Midwife Manager	9	9	-0	-2.6%	+1	+1
Staff Nurse/ Staff Midwife	48	46	-2	-3.5%	-3	+1
Nursing & Midwifery	57	55	-2	-3.4%	-2	+1
Therapy Professions	10	11	+1	+5.8%	-3	+0
Social Care	155	156	+1	+0.8%	-3	+6
Social Workers	4	3	-1	-25.0%		
Psychologists	6	5	-0	-5.2%	-1	-1
Health & Social Care Professionals	174	175	+1	+0.3%	-7	+5
Management (VIII & above)	15	16	+1	+5.7%	+2	+1
Administrative/ Supervisory (V to VII)	26	27	+1	+3.8%	+0	+1
Clerical (III & IV)	18	18	-0	-0.8%	-0	-1
Management & Administrative	59	61	+2	+2.9%	+1	+2
Support	12	12	-0	-0.5%	-0	-0
Maintenance/ Technical	5	5				
General Support	17	17	-0	-0.4%	-0	-0
Health Care Assistants	20	16	-3	-16.7%	-2	-0
Care, other	124	122	-2	-1.5%	-12	-10
Patient & Client Care	143	138	-5	-3.6%	-13	-10

St. John of God, Kerry

Aug 2021 (Dec 2020 figure: 320)	WTE Jul 2021	WTE Aug 2021	WTE change since Jul 21	% change since Jul 21	WTE change since Dec 20	WTE change since Aug 20
Overall	328	330	+2	+0.5%	+10	+13
Nurse/ Midwife Manager	15	15	-0	-2.2%	+0	-0
Staff Nurse/ Staff Midwife	45	44	-1	-2.3%	-3	-1
Nursing & Midwifery	61	59	-1	-2.3%	-3	-2
Therapy Professions	4	4	+0	+1.8%	+0	+0
Social Care	48	49	+1	+2.0%	+3	+3
Social Workers	1	1	+0	+47.1%		
Psychologists	1	1	+0	+5.4%	+0	+1
Health & Social Care Professionals	54	55	+1	+2.6%	+3	+4
Management (VIII & above)	3	3	-0	-1.8%	+2	+3
Administrative/ Supervisory (V to VII)	7	7	+0	+6.5%	-0	-1
Clerical (III & IV)	8	8	-0	-0.8%	-0	-1
Management & Administrative	18	18	+0	+1.8%	+1	+1
General Support	31	31	-0	-0.5%	+1	+2
Health Care Assistants	119	118	-0	-0.1%	+5	+2
Care, other	46	48	+2	+3.6%	+1	+6
Patient & Client Care	165	166	+2	+0.9%	+7	+8

St. John of God Liffey Services

Aug 2021 (Dec 2020 figure: 801)	WTE Jul 2021	WTE Aug 2021	WTE change since Jul 21	% change since Jul 21	WTE change since Dec 20	WTE change since Aug 20
Overall	798	779	-19	-2.3%	-22	+13
Registrars	2	1	-1	-35.9%		
Medical & Dental	2	1	-1	-35.9%		
Nurse/ Midwife Manager	22	20	-2	-10.7%	-2	-3
Nurse/ Midwife Specialist & AN/MP	1	1				
Staff Nurse/ Staff Midwife	98	96	-2	-2.4%	+5	+8
Nursing & Midwifery	121	116	-5	-3.9%	+3	+5
Therapy Professions	13	12	-1	-5.4%	-1	-5
Social Care	271	269	-2	-0.6%	-0	+14
Social Workers	6	7	+1	+12.8%	+1	+1
Psychologists	5	5	-0	-4.6%	-2	-2
Health & Social Care Professionals	294	292	-2	-0.6%	-2	+7
Management (VIII & above)	5	5			-0	-1
Administrative/ Supervisory (V to VII)	10	10	-1	-5.6%	-2	-0
Clerical (III & IV)	20	19	-0	-2.1%	+1	+1
Management & Administrative	35	34	-1	-2.8%	-1	-0
Support	26	25	-1	-4.3%	-3	-3
Maintenance/ Technical	14	14	+0	+0.2%	-0	+1
General Support	40	39	-1	-2.7%	-3	-2
Health Care Assistants	168	159	-8	-4.9%	-6	+5
Care, other	138	137	-1	-1.0%	-12	-2
Patient & Client Care	306	296	-10	-3.1%	-18	+3

Aug 2021 (Dec 2020 figure: 1,453)	WTE Jul 2021	WTE Aug 2021	WTE change since Jul 21	% change since Jul 21	WTE change since Dec 20	WTE change since Aug 20
Overall	1,448	1,456	+8	+0.6%	+3	+67
Consultants	6	7	+0	+6.9%	+1	+1
Registrars	1	1	-0	-1.0%		
Medical/ Dental, other	4	4				
Medical & Dental	11	12	+0	+3.8%	+1	+1
Nurse/ Midwife Manager	87	85	-2	-1.9%	-2	-2
Staff Nurse/ Staff Midwife	160	160	-1	-0.4%	-6	+5
Nursing & Midwifery	247	245	-2	-0.9%	-8	+3
Therapy Professions	52	53	+0	+0.3%	+7	+0
Social Care	595	599	+4	+0.7%	+34	+60
Social Workers	19	19	-0	-0.4%	-3	-0
Psychologists	19	19	+1	+4.0%	-4	+1
H&SC, Other	9	9	-0	-2.5%	+0	-1
Health & Social Care Professionals	694	699	+5	+0.7%	+34	+59
Management (VIII & above)	21	20	-1	-6.5%	-1	-2
Administrative/ Supervisory (V to VII)	49	50	+1	+2.3%	+4	+9
Clerical (III & IV)	47	48	+1	+2.6%	-6	-3
Management & Administrative	116	117	+1	+0.8%	-3	+4
Support	42	41	-0	-1.0%	-6	-22
Maintenance/ Technical	12	12	+0	+0.8%		
General Support	54	53	-0	-0.6%	-6	-22
Health Care Assistants	306	310	+3	+1.1%	-12	+27
Care, other	19	20	+1	+7.7%	-4	-4
Patient & Client Care	325	330	+5	+1.4%	-15	+23

St. Patrick's, Kilkenny

Aug 2021 (Dec 2020 figure: 287)	WTE Jul 2021	WTE Aug 2021	WTE change since Jul 21	% change since Jul 21	WTE change since Dec 20	WTE change since Aug 20
Overall	283	283	+0	+0.1%	-4	-7
Nurse/ Midwife Manager	12	13	+1	+8.5%	+1	+2
Staff Nurse/ Staff Midwife	25	25	-0	-1.3%	-2	-1
Pre-registration Nurse/ Midwife Intern	1	1			+1	+1
Nursing/ Midwifery Student	1	1			+1	+1
Nursing & Midwifery	38	39	+1	+1.8%	+0	+2
Social Care	24	26	+2	+7.8%	-3	-2
Social Workers	1	1			-0	+1
H&SC, Other	2	2			-0	-1
Health & Social Care Professionals	27	28	+2	+7.1%	-3	-2
Executive Management	1	1			+1	
Management (VIII & above)	1	1				
Administrative/ Supervisory (V to VII)	6	6	+0	+0.5%	+0	+0
Clerical (III & IV)	12	12	+0	+1.3%	+0	-0
Management & Administrative	19	19	+0	+0.9%	+0	+0
Support				-100.0%	-1	-3
Maintenance/ Technical	2	2			-1	-1
General Support	2	2			-2	-4
Patient & Client Care	197	194	-3	-1.3%	+2	-3

Sunbeam House Services

Aug 2021 (Dec 2020 figure: 450)	WTE Jul 2021	WTE Aug 2021	WTE change since Jul 21	% change since Jul 21	WTE change since Dec 20	WTE change since Aug 20
Overall	478	483	+5	+1.1%	+33	+38
Nurse/ Midwife Manager	5	5			+1	+2
Staff Nurse/ Staff Midwife	30	32	+2	+5.9%	-0	+1
Nursing & Midwifery	35	37	+2	+5.0%	+1	+3
Therapy Professions	3	3			+1	+2
Social Care	212	216	+3	+1.6%	+21	+40
Social Workers	3	3			+1	+2
Psychologists				-100.0%		-2
H&SC, Other				-100.0%		
Health & Social Care Professionals	219	222	+3	+1.6%	+23	+42
Management (VIII & above)	9	11	+2	+22.2%	+2	+2
Administrative/ Supervisory (V to VII)	11	11			+2	+0
Clerical (III & IV)	24	23	-2	-7.1%	-2	-12
Management & Administrative	44	44	+0	+0.6%	+2	-10
Support	6	5	-0	-7.0%	-2	-23
Maintenance/ Technical	1	1			+1	
General Support	7	6	-0	-6.0%	-1	-23
Health Care Assistants	71	71	+1	+1.2%	+6	+14
Care, other	102	102	-1	-0.6%	+3	+11
Patient & Client Care	173	173	+0	+0.1%	+9	+25

Bros. of Charity, West Region

Aug 2021 (Dec 2020 figure: 1,298)	WTE Jul 2021	WTE Aug 2021	WTE change since Jul 21	% change since Jul 21	WTE change since Dec 20	WTE change since Aug 20
Overall	1,332	1,334	+2	+0.2%	+36	+66
Consultants	2	2	+1	+26.3%		
Registrars	2	2				
Medical & Dental	4	4	+1	+12.8%		
Nurse/ Midwife Manager	70	65	-4	-6.4%	-3	-2
Nurse/ Midwife Specialist & AN/MP	4	4	-0	-1.4%	-0	+0
Staff Nurse/ Staff Midwife	115	118	+3	+2.5%	-6	-0
<i>Pre-registration Nurse Intern (COVID-19)</i>				-100.0%		-1
Nursing/ Midwifery Student				-100.0%	-1	-1
Nursing & Midwifery	189	187	-2	-0.9%	-10	-3
Therapy Professions	27	28	+1	+2.1%	-1	+3
Social Care	232	233	+0	+0.2%	+22	+25
Social Workers	26	26	+1	+2.4%	+1	+4
Psychologists	13	13	-0	-3.0%	+1	-1
H&SC, Other	10	10	+0	+3.0%	-1	-2
Health & Social Care Professionals	309	310	+2	+0.5%	+20	+29
Management (VIII & above)	13	13	-0	-0.0%		-1
Administrative/ Supervisory (V to VII)	39	39	+0	+1.0%	+3	+5
Clerical (III & IV)	36	38	+2	+5.0%	+0	+2
Management & Administrative	88	90	+2	+2.5%	+3	+6
Support	42	37	-5	-12.7%	-6	+2
Maintenance/ Technical	5	5				
General Support	48	42	-5	-11.3%	-6	+2
Health Care Assistants	580	586	+6	+1.1%	+38	+36
Care, other	115	114	-1	-1.0%	-9	-4
Patient & Client Care	695	700	+5	+0.7%	+29	+32

Social Care Disability Services Employment by Grade Group: Aug 2021

Aug 2021 (Dec 2020 figure: 18,944)	WTE Jul 2021	WTE Aug 2021	WTE change since Jul 21	% change since Jul 21	WTE change since Dec 20	WTE change since Aug 20
Overall	19,331	19,346	+15	+0.1%	+402	+847
Consultant Paediatrics	2	3	+1	+25.0%	-1	-1
Consultant Psychiatry	19	20	+1	+7.8%	-1	+0
Consultants	21	23	+2	+9.5%	-2	-1
Registrar	7	7	-0	-4.6%	+4	+3
Senior Registrar	2	2			-1	-1
Specialist Registrar	2	1	-1	-39.4%	-1	-1
Registrars	11	10	-1	-9.0%	+2	+1
SHO/ Interns	8	8	-1	-8.7%	-1	-0
Medical/ Dental, other	14	14				-1
Medical & Dental	54	55	+0	+0.4%	-1	-0
Clinical Nurse/ Midwife Manager	829	824	-5	-0.6%	+9	+6
Director Nursing/Midwifery, Assistant	45	44	-1	-2.9%	-2	+2
Director of Nursing/Midwifery	38	38	-0	-0.2%	+1	+1
Nurse/ Midwife Manager	912	905	-7	-0.7%	+8	+9
Advanced Nurse/ Midwife Practitioner	8	8				+4
Clinical Nurse/ Midwife Specialist	58	58	-0	-0.3%	+2	-3
Nurse/ Midwife Specialist & AN/MP	66	66	-0	-0.2%	+2	+1
Staff Nurse [Intellectual Disability]	1,726	1,734	+8	+0.4%	-54	+170
Staff Nurse [Psychiatric]	206	200	-6	-3.1%	+147	+143
Staff Nurses [General/ Children's]	651	637	-14	-2.2%	-116	-265
Staff Nurse/ Staff Midwife	2,584	2,570	-13	-0.5%	-23	+48
Public Health Nurse	10	10	-0	-0.3%	+3	+4
Pre-registration Nurse/ Midwife Intern	78	84	+6	+7.9%	+81	+69
Pre-registration Nurse Intern (COVID-19)	2	1	-1	-46.3%	-31	-125
Post-registration Nurse/ Midwife Student				-100.0%		-4
Nursing/ Midwifery awaiting registration	2		-2	-100.0%	-13	-11
Nursing/ Midwifery Student	81	85	+3	+4.0%	+37	-71
Nursing Education/Clinical	21	20	-1	-5.3%	-2	-3
Other Nursing/ Midwifery	2	2			+1	+1
Nursing/ Midwifery other	23	22	-1	-4.9%	-1	-2
Nursing & Midwifery	3,676	3,659	-18	-0.5%	+26	-11
Dietitians	19	20	+1	+5.7%	+3	-0
Occupational Therapists	296	297	+2	+0.6%	+19	+27
Physiotherapists	191	191	+0	+0.0%	-2	+4
Speech & Language Therapists	302	300	-2	-0.7%	-7	-1
Therapy Professions	808	809	+1	+0.1%	+13	+30
Clinical Engineering	15	15	-0	-1.3%	+2	+2
Clinical Measurement	2	2				
Medical Science	4	4				
Radiographers				-100.0%	-1	-1
Health Science/ Diagnostics	21	21	-0	-0.9%	+1	+1
Social Care	2,896	2,922	+26	+0.9%	+133	+252
Social Workers	226	226	+0	+0.1%	-2	+12
Psychologists	232	231	-1	-0.4%	+2	+19
Pharmacy	7	7	-0	-6.5%	+1	+1
Counsellor Therapists	23	24	+1	+5.5%	+4	+3
Other Health & Social Care	37	36	-1	-3.5%	-9	-14
Play Therapists/ Specialists	11	11	+0	+1.0%	+0	-1

Aug 2021 (Dec 2020 figure: 18,944)	WTE Jul 2021	WTE Aug 2021	WTE change since Jul 21	% change since Jul 21	WTE change since Dec 20	WTE change since Aug 20
Overall	19,331	19,346	+15	+0.1%	+402	+847
H&SC, Other	70	70	+0	+0.1%	-5	-12
Health & Social Care Professionals	4,261	4,286	+25	+0.6%	+142	+303
Executive Management	38	41	+3	+7.7%	+5	+6
Senior Management (VIII & GM)	179	173	-6	-3.2%	+5	+12
Management (VIII & above)	217	214	-3	-1.3%	+10	+17
Middle Management (V-VII)	546	546	+1	+0.1%	+35	+58
Other Administrative	14	13	-1	-7.1%	-3	-2
Administrative/ Supervisory (V to VII)	560	559	-0	-0.1%	+32	+56
Clerical (III & IV)	703	701	-2	-0.3%	+15	+24
Management & Administrative	1,480	1,474	-6	-0.4%	+58	+98
Catering	85	85	-0	-0.1%	-11	-19
Household Services	391	389	-2	-0.6%	-17	-28
Other Labs & Associated	1	1	-0	-3.8%		-0
Other Support	143	137	-6	-4.2%	+1	-15
Portering	18	18	-0	-1.4%	-7	-8
Support	638	629	-9	-1.4%	-34	-70
Maintenance	116	118	+1	+1.2%	-4	-3
Technical Services	14	14	+0	+0.7%	+3	+5
Maintenance/ Technical	130	132	+1	+1.2%	-1	+2
General Support	768	761	-7	-1.0%	-34	-69
HCA, Nurse's Aide, etc.	7,278	7,310	+32	+0.4%	+218	+434
HCA (Student Nurse/Midwife COVID-19)				-100.0%		-3
Health & Social Care Assistants	14	14	-0	-0.2%	+3	+2
Health Care Assistants	7,291	7,323	+32	+0.4%	+221	+433
Home Help	88	88	+0	+0.1%	-6	-15
Care, other	1,713	1,702	-12	-0.7%	-4	+108
Patient & Client Care	9,092	9,113	+20	+0.2%	+211	+527

Employment by WTE, Headcount, Gender, Full-Time /Part-Time etc.: Aug 2021

Social Care Disability Services Staff Group	WTE	Headcount	WTE: no.	% Male	% female	Male WTE: no.	Female WTE: no.	% Total Perm	% Male Perm	% Female Perm	% Total Full Time	% Total Part Time	% Male FT	% Female FT
Overall	19,346	22,827	1.18	19.3%	80.7%	1.11	1.20	87.4%	86.4%	87.6%	57.6%	42.4%	68.1%	55.1%
Consultant Paediatrics	3	5	2.00		100.0%		2.00	80.0%	80.0%	80.0%	20.0%	80.0%		20.0%
Consultant Psychiatry	20	25	1.24	24.0%	76.0%	1.00	1.34	76.0%	76.0%	78.9%	60.0%	40.0%	100.0%	47.4%
Consultants	23	30	1.33	20.0%	80.0%	1.00	1.44	76.7%	66.7%	79.2%	53.3%	46.7%	100.0%	41.7%
Registrar	7	7	1.00	42.9%	57.1%	1.00	1.00	0.0%	0.0%	0.0%	100.0%	0.0%	100.0%	100.0%
Senior Registrar	2	2	1.00		100.0%		1.00	0.0%	0.0%	0.0%	100.0%	0.0%		100.0%
Specialist Registrar	1	1	1.00		100.0%		1.00	0.0%	0.0%	0.0%	100.0%	0.0%		100.0%
Registrars	10	10	1.00	30.0%	70.0%	1.00	1.00	0.0%	0.0%	0.0%	100.0%	0.0%	100.0%	100.0%
SHO/ Interns	8	8	1.05	37.5%	62.5%	1.00	1.08	0.0%	0.0%	0.0%	100.0%	0.0%	100.0%	100.0%
Medical/ Dental, other	14	22	1.54	45.5%	54.5%	1.28	1.84	90.9%	80.0%	100.0%	40.9%	59.1%	50.0%	33.3%
Medical & Dental	55	70	1.28	31.4%	68.6%	1.11	1.38	61.4%	54.5%	64.6%	61.4%	38.6%	77.3%	54.2%
Clinical Nurse/ Midwife Manager	824	884	1.07	12.9%	87.1%	1.01	1.08	93.4%	93.4%	93.4%	82.2%	17.8%	97.4%	80.0%
Director Nursing/Midwifery, Assistant	44	45	1.03	13.3%	86.7%	1.00	1.03	97.8%	97.8%	97.4%	93.3%	6.7%	100.0%	92.3%
Director of Nursing/Midwifery	38	39	1.03	10.3%	89.7%	1.02	1.04	92.3%	92.3%	91.4%	97.4%	2.6%	100.0%	97.1%
Nurse/ Midwife Manager	905	968	1.07	12.8%	87.2%	1.01	1.08	93.6%	94.4%	93.5%	83.4%	16.6%	97.6%	81.3%
Advanced Nurse/ Midwife Practitioner	8	8	1.00	37.5%	62.5%	1.00	1.00	100.0%	100.0%	100.0%	100.0%	0.0%	100.0%	100.0%
Clinical Nurse/ Midwife Specialist	58	66	1.14	6.1%	93.9%	1.01	1.15	97.0%	97.0%	96.8%	59.1%	40.9%	100.0%	56.5%
Nurse/ Midwife Specialist & AN/MP	66	74	1.12	9.5%	90.5%	1.01	1.14	97.3%	100.0%	97.0%	63.5%	36.5%	100.0%	59.7%
Staff Nurse [Intellectual Disability]	1,734	1,988	1.15	8.6%	91.4%	1.08	1.15	95.7%	95.7%	95.8%	66.0%	34.0%	81.2%	64.6%
Staff Nurse [Psychiatric]	200	236	1.18	21.2%	78.8%	1.28	1.16	90.3%	90.3%	89.8%	61.9%	38.1%	40.0%	67.7%
Staff Nurses [General/ Children's]	637	760	1.19	13.3%	86.7%	1.08	1.21	90.8%	90.8%	90.3%	66.6%	33.4%	87.1%	63.4%
Staff Nurse/ Staff Midwife	2,570	2,984	1.16	10.8%	89.2%	1.10	1.17	94.0%	94.1%	94.0%	65.8%	34.2%	76.6%	64.5%
Public Health Nurse	10	12	1.17		100.0%	#DIV/0	1.17	100.0%		100.0%	75.0%	25.0%	#DIV/0	75.0%
Nursing/ Midwifery Student	85	161	1.90	5.6%	94.4%	1.79	1.91	23.0%	0.0%	24.3%	66.5%	33.5%	88.9%	65.1%
Nursing Education/Clinical	20	23	1.13		100.0%		1.13	95.7%	95.7%	95.7%	69.6%	30.4%		69.6%
Other Nursing/ Midwifery	2	2	1.00	50.0%	50.0%	1.00	1.00	100.0%	100.0%	100.0%	100.0%	0.0%	100.0%	100.0%
Nursing/ Midwifery other	22	25	1.12	4.0%	96.0%	1.00	1.13	96.0%	100.0%	95.8%	72.0%	28.0%	100.0%	70.8%
Nursing & Midwifery	3,659	4,224	1.15	10.9%	89.1%	1.08	1.16	91.3%	92.4%	91.2%	69.9%	30.1%	82.9%	68.3%

Dietitians	20	24	1.21		100.0%		1.21	95.8%	95.8%	95.8%	66.7%	33.3%		66.7%
Occupational Therapists	297	340	1.14	5.9%	94.1%	1.09	1.15	93.2%	93.2%	93.1%	79.4%	20.6%	85.0%	79.1%
Physiotherapists	191	229	1.20	17.9%	82.1%	1.08	1.23	91.7%	91.7%	91.5%	67.2%	32.8%	87.8%	62.8%
Speech & Language Therapists	300	349	1.16	1.7%	98.3%	1.04	1.16	92.3%	92.3%	92.4%	74.5%	25.5%	100.0%	74.1%
Therapy Professions	809	942	1.16	7.1%	92.9%	1.08	1.17	92.6%	92.5%	92.6%	74.3%	25.7%	88.1%	73.3%
Clinical Engineering	15	15	1.02	93.3%	6.7%	1.02	1.00	86.7%	86.7%	100.0%	93.3%	6.7%	92.9%	100.0%
Clinical Measurement	2	2	1.00	100.0%		1.00		100.0%	100.0%		100.0%	0.0%	100.0%	
Medical Science	4	4	1.00	75.0%	25.0%	1.00	1.00	75.0%	75.0%	100.0%	100.0%	0.0%	100.0%	100.0%
Health Science/ Diagnostics	21	21	1.02	90.5%	9.5%	1.02	1.00	85.7%	84.2%	100.0%	95.2%	4.8%	94.7%	100.0%
Social Care	2,922	3,412	1.17	16.5%	83.5%	1.09	1.18	89.3%	89.9%	89.2%	49.1%	50.9%	63.2%	46.3%
Social Workers	226	268	1.19	17.9%	82.1%	1.10	1.20	93.3%	89.6%	94.1%	70.9%	29.1%	81.3%	68.6%
Psychologists	231	265	1.15	20.0%	80.0%	1.10	1.16	94.0%	96.2%	93.4%	73.6%	26.4%	81.1%	71.7%
Pharmacy	7	9	1.33		100.0%	#DIV/0	1.33	88.9%		88.9%	88.9%	11.1%	#DIV/0	88.9%
Counsellor Therapists	24	29	1.22	6.9%	93.1%	1.00	1.24	96.6%	96.6%	96.3%	55.2%	44.8%	100.0%	51.9%
Other Health & Social Care	36	50	1.41	16.0%	84.0%	1.06	1.50	90.0%	90.0%	90.5%	46.0%	54.0%	75.0%	40.5%
Play Therapists/ Specialists	11	15	1.37	20.0%	80.0%	1.00	1.52	93.3%	93.3%	91.7%	53.3%	46.7%	100.0%	41.7%
H&SC, Other	70	94	1.34	13.8%	86.2%	1.03	1.40	92.6%	92.3%	92.6%	50.0%	50.0%	84.6%	44.4%
Health & Social Care	4,286	5,011	1.17	15.2%	84.8%	1.09	1.19	90.4%	90.4%	90.4%	56.6%	43.4%	68.9%	54.4%
Executive Management	41	41	1.00	39.0%	61.0%	1.00	1.00	95.1%	95.1%	100.0%	100.0%	0.0%	100.0%	100.0%
Senior Management (VIII & GM)	173	177	1.02	32.2%	67.8%	1.01	1.03	95.5%	95.5%	96.7%	95.5%	4.5%	98.2%	94.2%
Management (VIII & above)	214	218	1.02	33.5%	66.5%	1.01	1.02	95.4%	91.8%	97.2%	96.3%	3.7%	98.6%	95.2%
Middle Management (V-VII)	546	592	1.08	21.8%	78.2%	1.04	1.10	92.7%	92.7%	92.7%	78.4%	21.6%	86.8%	76.0%
Other Administrative	13	13	1.00	15.4%	84.6%	1.00	1.00	100.0%	100.0%	100.0%	100.0%	0.0%	100.0%	100.0%
Administrative/ Supervisory (V to VII)	559	605	1.08	21.7%	78.3%	1.04	1.10	92.9%	93.1%	92.8%	78.8%	21.2%	87.0%	76.6%
Clerical (III & IV)	701	856	1.22	11.2%	88.8%	1.14	1.23	87.1%	74.0%	88.8%	56.4%	43.6%	69.8%	54.7%
Management & Administrative	1,474	1,679	1.14	17.9%	82.1%	1.06	1.16	90.3%	86.7%	91.1%	69.7%	30.3%	84.3%	66.5%
Catering	85	102	1.21	27.5%	72.5%	1.06	1.27	98.0%	98.0%	98.6%	58.8%	41.2%	85.7%	48.6%
Household Services	389	566	1.45	16.1%	83.9%	1.47	1.45	88.2%	88.2%	90.7%	35.3%	64.7%	57.1%	31.2%
Other Labs & Associated	1	1	1.00		100.0%		1.00	100.0%	100.0%	100.0%	100.0%	0.0%		100.0%
Other Support	137	216	1.58	50.5%	49.5%	1.31	2.00	94.0%	94.0%	100.0%	28.2%	71.8%	49.5%	6.5%
Portering	18	25	1.42	96.0%	4.0%	1.43	1.25	88.0%	88.0%	100.0%	40.0%	60.0%	41.7%	0.0%
Support	629	910	1.45	27.7%	72.3%	1.34	1.49	90.7%	84.1%	93.2%	36.5%	63.5%	55.6%	29.2%
Maintenance	118	130	1.10	87.7%	12.3%	1.08	1.30	93.1%	93.1%	81.3%	76.2%	23.8%	81.6%	37.5%
Technical Services	14	14	0.99	78.6%	21.4%	0.99	1.00	92.9%	92.9%	100.0%	100.0%	0.0%	100.0%	100.0%
Maintenance/ Technical	132	144	1.09	86.8%	13.2%	1.07	1.24	93.1%	94.4%	84.2%	78.5%	21.5%	83.2%	47.4%

General Support	761	1,054	1.39	35.8%	64.2%	1.24	1.48	91.0%	87.5%	92.9%	42.2%	57.8%	64.7%	29.7%
HCA, Nurse's Aide, etc.	7,310	8,529	1.17	23.1%	76.9%	1.10	1.19	83.6%	83.6%	83.5%	51.8%	48.2%	62.0%	48.8%
Health & Social Care Assistants	14	17	1.24	11.8%	88.2%	1.00	1.29	88.2%	88.2%	93.3%	52.9%	47.1%	100.0%	46.7%
Health Care Assistants	7,323	8,546	1.17	23.1%	76.9%	1.10	1.19	83.6%	83.9%	83.5%	51.8%	48.2%	62.1%	48.8%
Home Help	88	240	2.73	8.8%	91.3%	4.11	2.65	55.8%	52.4%	56.2%	3.3%	96.7%	0.0%	3.7%
Care, other	1,702	2,003	1.18	24.6%	75.4%	1.13	1.19	88.4%	86.2%	89.1%	63.6%	36.4%	72.6%	60.6%
Patient & Client Care	9,113	10,789	1.18	23.0%	77.0%	1.11	1.21	83.8%	84.1%	83.8%	52.9%	47.1%	63.6%	49.7%

Employment by WTE, Headcount, Gender, Full-Time /Part-Time etc.: Aug 2021

Social Care Disability Services CHO	WTE	Headcount	WTE: no.	% Male	% female	Male WTE: no.	Female WTE: no.	% Total Perm	% Male Perm	% Female Perm	% Total Full Time	% Total Part Time	% Male FT	% Female FT
Overall	19,346	22,827	1.18	19.3%	80.7%	1.11	1.20	87.4%	86.4%	87.6%	57.6%	42.4%	68.1%	55.1%
CHO 1	1,546	1,731	1.12	19.9%	80.1%	1.05	1.14	89.4%	89.4%	89.3%	77.6%	22.4%	89.0%	74.8%
CHO 2	1,556	1,916	1.23	23.9%	76.1%	1.21	1.24	81.1%	81.1%	81.3%	43.6%	56.4%	49.3%	41.8%
CHO 3	1,983	2,329	1.17	12.8%	87.2%	1.13	1.18	83.8%	83.8%	84.2%	40.4%	59.6%	44.4%	39.9%
CHO 4	2,630	3,126	1.19	20.5%	79.5%	1.12	1.21	83.5%	83.5%	84.9%	65.5%	34.5%	72.7%	63.6%
CHO 5	1,610	1,899	1.18	18.9%	81.1%	1.10	1.20	84.8%	84.8%	84.9%	53.7%	46.3%	63.2%	51.4%
CHO 6	1,227	1,404	1.14	21.1%	78.9%	1.05	1.17	94.1%	94.1%	95.0%	67.2%	32.8%	82.1%	63.2%
CHO 7	3,199	3,795	1.19	22.7%	77.3%	1.11	1.21	88.4%	88.4%	88.2%	67.4%	32.6%	79.3%	63.9%
CHO 8	2,273	2,729	1.20	21.4%	78.6%	1.13	1.22	91.7%	91.7%	91.5%	47.0%	53.0%	52.3%	45.6%
CHO 9	3,317	3,892	1.17	14.5%	85.5%	1.08	1.19	89.9%	89.9%	89.7%	56.0%	44.0%	73.0%	53.1%
other Community Services	6	6	1.01	16.7%	83.3%	1.00	1.01	83.3%	83.3%	80.0%	83.3%	16.7%	100.0%	80.0%

Summary Staff Movement: August 2021

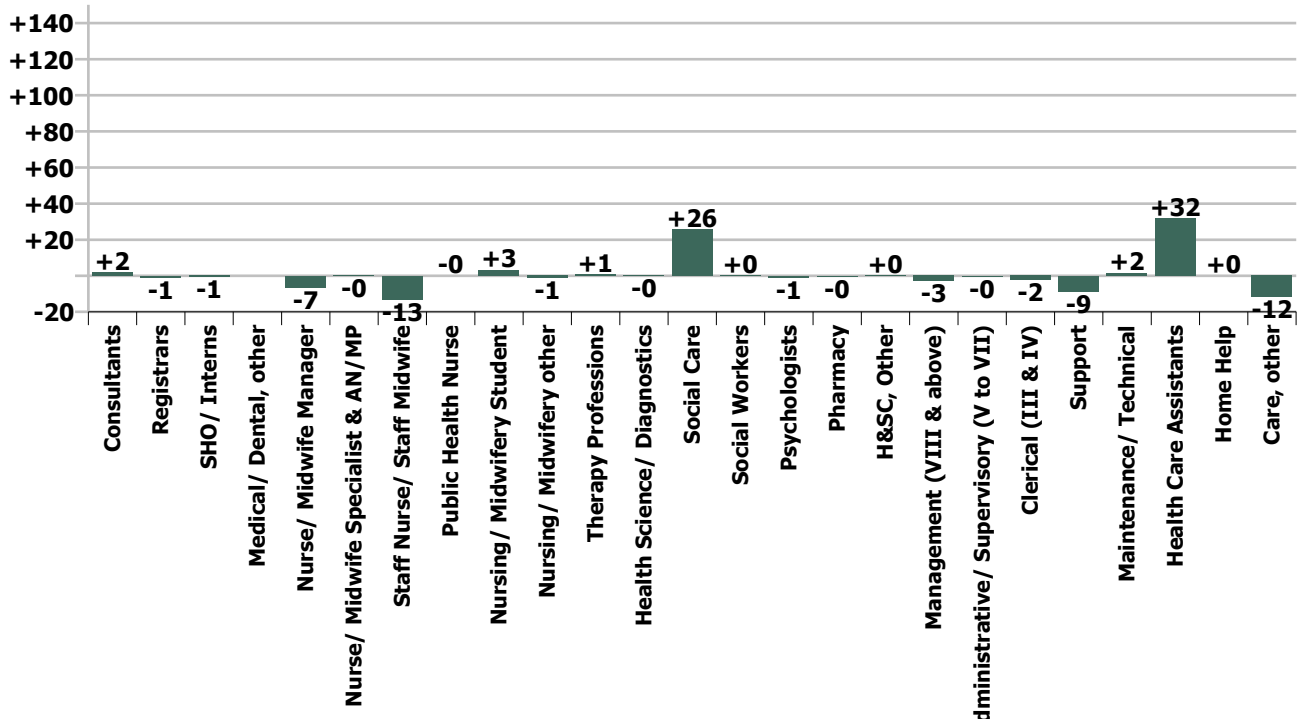
Month-on-month
Summary

	% change since Jul 21	overall	Consultants	Registrars	SHO/ Interns	Medical/ Dental, other	Medical & Dental	Nurse/ Midwife Manager	Nurse/ Midwife Specialist & AN/MP	Staff Nurse/ Staff Midwife	Public Health Nurse	Nursing/ Midwifery Student	Nursing/ Midwifery other	Nursing & Midwifery	Therapy Professions	Health Science/ Diagnostics	Social Care	Social Workers	Psychologists	Pharmacy	H&SC, Other	Health & Social Care Professionals	Management (VIII & above)	Administrative Supervisory (V to VII)	Clerical (III & IV)	Management & Administrative	Support	Maintenance/ Technical	General Support	Health Care Assistants	Home Help	Care, other	Patient & Client Care
Overall	+0.1%	+15	+2.0	-1.0	-0.7	0.0	+0.2	-6.6	-0.2	-13.2	-0.0	+3.3	-1.1	-17.9	+0.7	-0.2	+25.7	+0.3	-1.0	-0.5	+0.1	+25.1	-2.8	-0.4	-2.4	-5.6	-8.8	+1.5	-7.3	+31.8	+0.1	-11.7	+20.2
CHO 1	+0.4%	+7					0.0	+1.8	-0.2	+5.8		-0.9		+6.5	+0.9		-0.5	-0.9	+0.2		+0.7	+0.4	-3.7	+1.5	-0.0	-2.3	-0.6	+1.0	+0.4	-0.6	+0.1	+2.1	+1.6
CHO 2	+0.0%	+1	+0.5				+0.5	-5.2	-0.1	+2.0				-3.3	+1.1		+0.5	+0.6	-0.4		+0.3	+2.1	+0.1	-0.0	+1.8	+1.8	-5.4		-5.4	+6.1		-1.2	+4.9
CHO 3	+0.3%	+6	+1.0				+1.0	-1.3		-1.1		-0.1		-2.5	-0.5	-0.1		-0.1	+0.2		-0.0	-0.5	+0.2	+0.9	+1.1	-1.6		-1.6	+3.8		+5.1	+8.8	
CHO 4	+0.5%	+14					0.0	+3.5		-8.2		-2.0		-6.7	-1.4		+2.8	+0.8	+0.2		+0.1	+2.5	-0.8	-0.3	-1.6	-2.7	-1.1		-1.1	+30.3		-8.4	+21.9
CHO 5	-0.7%	-11					0.0	+0.7		-2.3	-0.0	+0.6	+0.0	-1.0	-4.0		+3.9	-0.5	-0.2		+0.0	-0.7	-0.1	+2.7	+1.1	+3.7	+0.1		+0.1	-10.8	-0.1	-2.2	-13.0
CHO 6	-0.2%	-3		-0.4	-0.0		-0.4	+0.1		+1.0				+1.2	+0.5		+4.8	-1.0	-1.3		-0.2	+2.8	+1.9	-1.0	-2.5	-1.6	-0.5		-0.5	-1.9		-2.4	-4.3
CHO 7	-0.6%	-18		-0.6	-0.7		-1.3	-5.5		-4.1				-9.5	+1.4		+1.8	+0.7	+0.2	-0.5		+3.6	-0.1	-3.1	-1.1	-4.4	+0.7	+0.4	+1.1	-5.0	+0.5	-2.9	-7.5
CHO 8	+0.3%	+8					0.0	-0.6	+0.1	-2.2		+5.7	-0.0	+3.0	-0.4	-0.1	+5.4	+0.0	+0.0		-0.5	+4.4	-0.0	+0.1	-2.4	-2.4	-1.0	+0.0	-1.0	+7.5	-0.4	-3.3	+3.8
CHO 9	+0.3%	+11	+0.4	-0.0			+0.4	-0.2		-4.2			-1.1	-5.6	+3.1		+7.0	+0.6	+0.0		-0.3	+10.5	-0.0	-0.4	+1.5	+1.1	+0.5	+0.1	+0.6	+2.5		+1.5	+4.0
other Community Services																										0.0							
		+0.1%	+9.5%	-9.0%	-8.7%		+0.4%	-0.7%	-0.2%	-0.5%	-0.3%	+4.0%	-4.9%	-0.5%	+0.1%	-0.9%	+0.9%	+0.1%	-0.4%	-6.5%	+0.1%	+0.6%	-1.3%	-0.1%	-0.3%	-0.4%	-1.4%	+1.2%	-1.0%	+0.4%	+0.1%	-0.7%	+0.2%

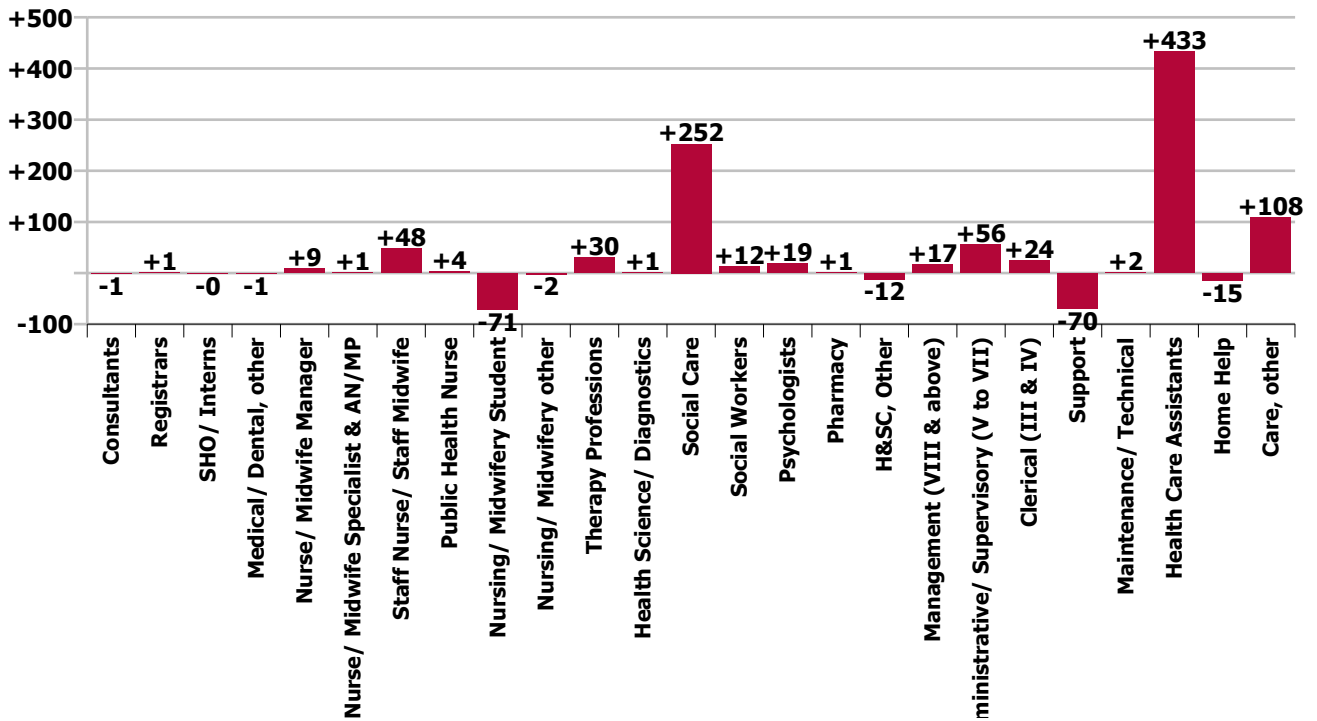
Year-on-year Summary

WTE change since Aug 20	% change since Aug 20	overall	Consultants	Registrars	SHO/ Interns	Medical/ Dental, other	Medical & Dental	Nurse/ Midwife Manager	Nurse/ Midwife Specialist & AN/MP	Staff Nurse/ Staff Midwife	Public Health Nurse	Nursing/ Midwifery Student	Nursing/ Midwifery other	Nursing & Midwifery	Therapy Professions	Health Science/ Diagnostics	Social Care	Social Workers	Psychologists	Pharmacy	H&SC, Other	Health & Social Care Professionals	Management (VIII & above)	Administrativ e/ Supervisory (V to VII)	Clerical (III & IV)	Management & Administrativ e	Support	Maintenance/ Technical	General Support	Health Care Assistants	Home Help	Care, other	Patient & Client Care
Overall	+4.6%	+847	-1	+1	-0	-1	-0	+9	+1	+48	+4	-71	-2	-11	+30	+1	+252	+12	+19	+1	-12	+303	+17	+56	+24	+98	-70	+2	-69	+433	-15	+108	+527
CHO 1	+0.2%	+4				-0	-0	+5	-1	+24	+1	-20	-3	+7	+1		+2	-3	+8		-2	+5	-3	+7	-0	+4	-17	-1	-18	-6	-1	+12	+5
CHO 2	+5.0%	+73						-3	+1	-3		-1		-5	+3		+26	+4	-1		-2	+29	+0	+7	+0	+7	+2	-0	+2	+37		+4	+40
CHO 3	+4.6%	+88	-0				-0	-4	-2	-2		+6		-2	-0	+1	+21	+5	-1		-2	+23		+0	-1	-1	-2	+2	+7	+48		+20	+68
CHO 4	+5.4%	+134	+1			-1	+0	-0		-4		-18	-1	-22	+13		+15	+0	+2		-2	+28	-0	+0	+2	+2	+5	+2	+7	+99		+20	+119
CHO 5	+6.5%	+98					+4			+4	+3	-2	+1	+9	+9		-1	+4	+8		-1	+19	+3	+14	+6	+23	-4		-4	+38	-9	+22	+51
CHO 6	+3.4%	+40			+1		+1	+2		+2				+5	+3		+46	+1	-3		+0	+48	+2	+0	-13	-11	-23		-23	+12		+8	+21
CHO 7	+5.7%	+171	-0		-0		-0	+6	+0	+12		-8	+1	+11	-3	-1	+44	+0	+3	+1	+1	+45	+8	+6	+8	+23	-9	+1	-8	+89	-1	+13	+101
CHO 8	+4.9%	+107	-1	-1			-2	+1	-1	+9		-16	+1	-6	-1	-0	+11	+1	+6		-0	+17	+2	-5	+12	+9	-3	-1	-4	+89	-3	+5	+92
CHO 9	+4.1%	+131	+0	+2	-1		+1	-1	+4	+4		-13	-2	-8	+5	+1	+89	-1	-3			+88	+5	+26	+10	+41	-19	-1	-20	+26		+3	+29
other Community Services																									-0								
		+4.6%	-2.2%	+16.0%	-3.4%	-5.1%	-0.3%	+1.0%	+2.2%	+1.9%	+55.2%	-45.5%	-9.2%	-0.3%	+3.8%	+3.9%	+9.5%	+5.6%	+8.9%	+10.9%	-14.4%	+7.6%	+8.9%	+11.2%	+3.5%	+7.1%	-10.1%	+1.3%	-8.3%	+6.3%	-14.2%	+6.8%	+6.1%

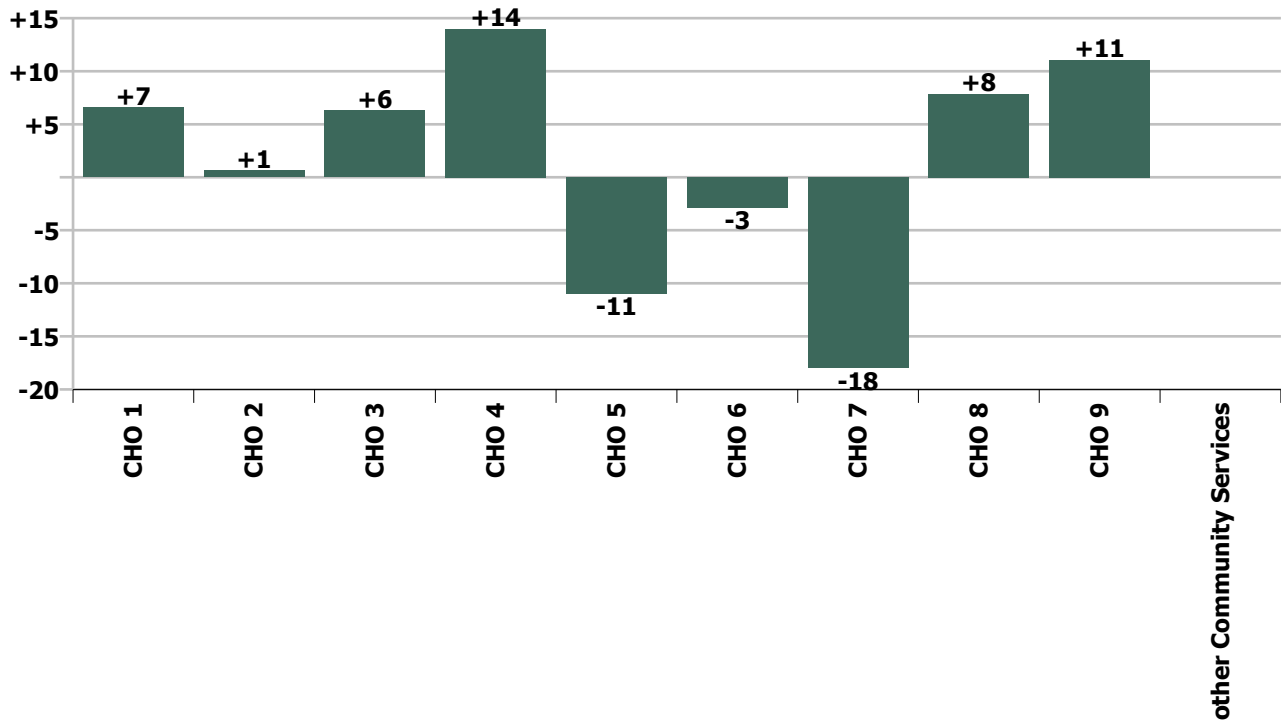
Staff Group change since: Jul 2021



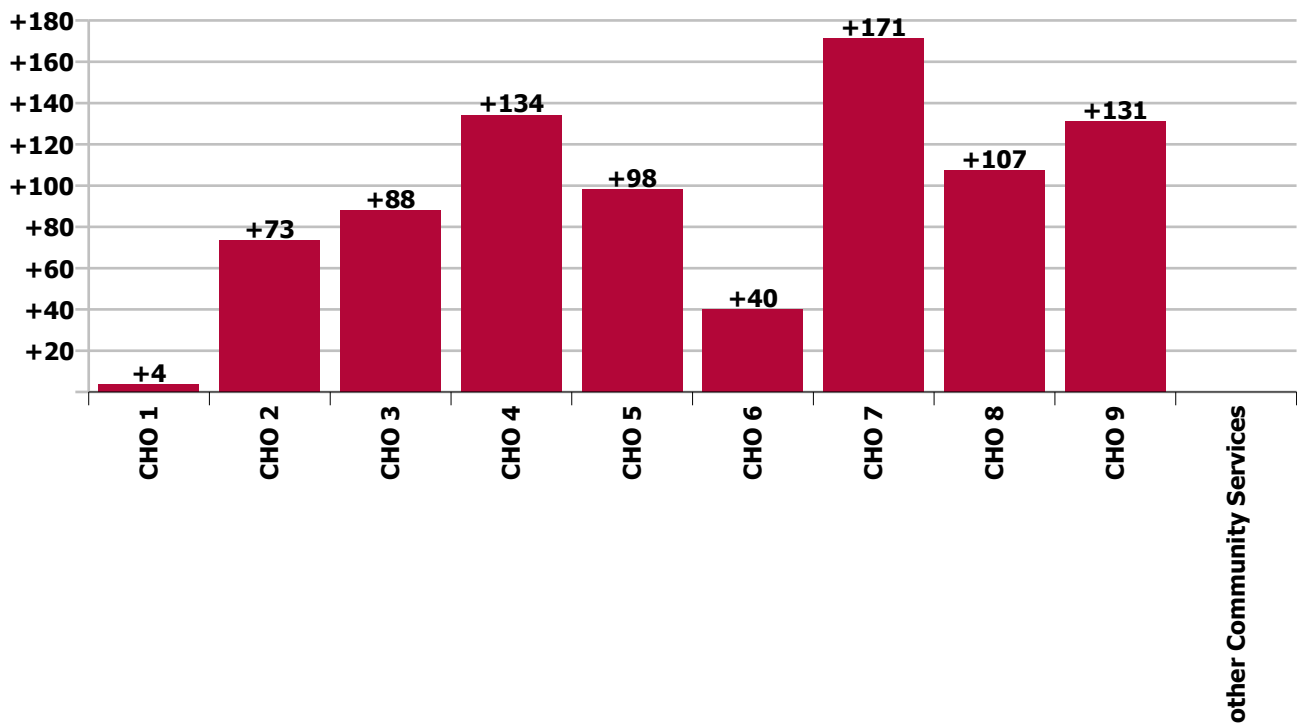
Staff Group change since: Aug 2020



CHO change since: Jul 2021



CHO change since: Aug 2020



Longitudinal Employment Levels by Grade Group - Dec 2016 to Aug 2021

Aug 2021 (Dec 2015 figure: 15,715)	WTE Aug 2021	WTE change since Dec 16	WTE change since Dec 17	WTE change since Dec 18	WTE change since Dec 19	WTE change since Dec 20	WTE change since Apr 21	% change since Dec 16	% change since Dec 17	% change since Dec 18	% change since Dec 19	% change since Dec 20	% change since Apr 21
Overall	19,346	+2,592	+1,949	+1,527	+1,044	+402	+232	+15.5%	+11.2%	+8.6%	+5.7%	+2.1%	+1.2%
Consultant Medicine		-2						-100.0%	-100.0%	-100.0%	-100.0%	-100.0%	-100.0%
Consultant Paediatrics	3	-1	-1	-1	-1	-1	-1	-22.1%	-20.4%	-18.0%	-18.0%	-18.0%	-18.0%
Consultant Psychiatry	20	-1	-3	+2	-1	-1	+2	-4.7%	-11.9%	+12.5%	-3.4%	-5.7%	+8.7%
Consultant Surgery		-0						-100.0%	-100.0%	-100.0%	-100.0%	-100.0%	-100.0%
Consultants	23	-3	-3	+2	-1	-2	+1	-13.0%	-12.9%	+8.0%	-5.2%	-7.2%	+5.0%
Registrar	7	+1	+1	+2		+4	+2	+16.7%	+16.7%	+31.6%		+133.3%	+38.1%
Senior Registrar	2		-1			-1			-33.3%			-33.3%	
Specialist Registrar	1	-1	-3		-3	-1	-2	-50.0%	-75.0%		-75.0%	-50.0%	-62.8%
Registrars	10		-3	+2	-3	+2	+0		-23.1%	+20.2%	-23.1%	+25.0%	+2.5%
SHO/ Interns	8	+2	+1	+1	+1	-1	-0	+27.2%	+9.0%	+9.8%	+9.6%	-15.2%	-5.1%
Dentists								-100.0%	-100.0%	-100.0%	-100.0%	-100.0%	-100.0%
Other Medical	14	-1	+0	+0	-0			-3.8%	+0.2%	+1.1%	-0.6%		
Medical/ Dental, other	14	-1	+0	+0	-0			-3.8%	+0.2%	+1.1%	-0.6%		
Medical & Dental	55	-2	-6	+4	-4	-1	+1	-4.1%	-9.4%	+8.3%	-6.3%	-2.0%	+1.7%
Clinical Nurse/ Midwife Manager	824	+12	+15	+15	+13	+9	+4	+1.5%	+1.8%	+1.9%	+1.6%	+1.1%	+0.5%
Director Nursing/Midwifery, Assistant	44	+1	+7	+6	+3	-2	-3	+3.4%	+18.0%	+15.1%	+7.2%	-4.2%	-6.8%
Director of Nursing/Midwifery	38	-6	-8	-0	-4	+1	+3	-13.6%	-17.1%	-0.6%	-10.6%	+2.2%	+8.9%
Nurse/ Midwife Manager	905	+8	+14	+21	+11	+8	+4	+0.8%	+1.5%	+2.3%	+1.3%	+0.9%	+0.4%
Advanced Nurse/ Midwife Practitioner	8	+7	+6	+6	+6			+700.0%	+300.0%	+300.0%	+300.0%		
Clinical Nurse/ Midwife Specialist	58	-13	-10	-8	-2	+2	+0	-18.3%	-14.7%	-12.5%	-3.3%	+3.5%	+0.1%
Nurse/ Midwife Specialist & AN/MP	66	-6	-4	-2	+4	+2	+0	-8.3%	-5.7%	-3.4%	+6.5%	+3.1%	+0.1%
Graduate Nursing/ Midwifery								-100.0%	-100.0%	-100.0%	-100.0%	-100.0%	-100.0%
Staff Nurse [Intellectual Disability]	1,734	+9	+31	+50	+137	-54	-20	+0.5%	+1.8%	+3.0%	+8.6%	-3.0%	-1.1%
Staff Nurse [Psychiatric]	200	+115	+129	+129	+116	+147	-3	+135.6%	+183.6%	+181.8%	+139.2%	+279.5%	-1.7%
Staff Nurses [General/ Children's]	637	-297	-288	-232	-255	-116	-2	-31.8%	-31.1%	-26.7%	-28.6%	-15.4%	-0.3%
Staff Nurse/ Staff Midwife	2,570	-173	-127	-53	-2	-23	-25	-6.3%	-4.7%	-2.0%	-0.1%	-0.9%	-1.0%
Public Health Nurse	10	+4	+4	+4	+4	+3	-1	+57.6%	+67.9%	+52.9%	+63.4%	+48.9%	-6.7%
Pre-registration Nurse/ Midwife Intern	84	+72	+72	+49	+55	+81	+2	+597.7%	+610.1%	+140.4%	+196.4%	+3248.8%	+3.1%
Pre-registration Nurse Intern (COVID-19)	1	+1	+1	+1	+1	-31	+1	-100.0%	-100.0%	-100.0%	-100.0%	-97.0%	+161.1%
Nursing/ Midwifery awaiting registration					-14	-13	-13	-100.0%	-100.0%	-100.0%	-100.0%	-100.0%	-100.0%
Nursing/ Midwifery Student	85	+73	+73	+50	+43	+37	-10	+605.5%	+618.1%	+143.1%	+101.1%	+79.0%	-10.5%
Nursing Education/Clinical	20	-1	-1	-1	-1	-2	-4	-4.4%	-3.7%	-4.0%	-4.1%	-10.9%	-15.6%
Other Nursing/ Midwifery	2	-3	-3	+1	+1	+1		-60.0%	-60.0%	+100.0%	+100.0%	+100.0%	
Nursing/ Midwifery other	22	-4	-4	+0	+0	-1	-4	-15.0%	-14.5%	+0.7%	+0.6%	-6.3%	-14.4%
Nursing & Midwifery	3,659	-99	-44	+19	+60	+26	-36	-2.6%	-1.2%	+0.5%	+1.7%	+0.7%	-1.0%
Dietitians	20	+7	+8	+6	+1	+3	+4	+50.7%	+66.3%	+44.6%	+7.5%	+20.9%	+23.0%
Occupational Therapists	297	+46	+49	+57	+33	+19	+10	+18.4%	+19.6%	+23.5%	+12.6%	+6.8%	+3.5%

Aug 2021 (Dec 2015 figure: 15,715)	WTE Aug 2021	WTE change since Dec 16	WTE change since Dec 17	WTE change since Dec 18	WTE change since Dec 19	WTE change since Dec 20	WTE change since Apr 21	% change since Dec 16	% change since Dec 17	% change since Dec 18	% change since Dec 19	% change since Dec 20	% change since Apr 21
Overall	19,346	+2,592	+1,949	+1,527	+1,044	+402	+232	+15.5%	+11.2%	+8.6%	+5.7%	+2.1%	+1.2%
Physiotherapists	191	+6	+6	+10	+2	-2	+3	+3.4%	+3.5%	+5.7%	+1.0%	-1.0%	+1.4%
Podiatrists & Chiropodists		-0	-0					-100.0%	-100.0%	-100.0%	-100.0%	-100.0%	-100.0%
Speech & Language Therapists	300	+29	+18	+21	+7	-7	-6	+10.9%	+6.2%	+7.6%	+2.6%	-2.3%	-1.8%
Therapy Professions	809	+89	+81	+94	+44	+13	+11	+12.3%	+11.1%	+13.2%	+5.8%	+1.7%	+1.4%
Audiology		-13	-18					-100.0%	-100.0%	-100.0%	-100.0%	-100.0%	-100.0%
Clinical Engineering	15	-4	-3	+3	+2	+2	+1	-19.8%	-18.4%	+22.3%	+12.9%	+13.4%	+5.2%
Clinical Measurement	2	+1	+1	+1	+1			+100.0%	+100.0%	+100.0%	+100.0%		
Medical Science	4	+1	+1					+33.3%	+33.3%				
Phlebotomists				-1	-1			-100.0%	-100.0%	-100.0%	-100.0%	-100.0%	-100.0%
Radiographers		-1	-1	-1	-1	-1	-1	-100.0%	-100.0%	-100.0%	-100.0%	-100.0%	-100.0%
Health Science/ Diagnostics	21	-15	-20	+2	+1	+1	-0	-42.5%	-49.4%	+8.8%	+3.4%	+3.7%	-1.3%
Social Care	2,922	+730	+576	+433	+327	+133	+98	+33.3%	+24.5%	+17.4%	+12.6%	+4.8%	+3.5%
Social Workers	226	+10	+5	+7	+7	-2	-3	+4.9%	+2.5%	+3.1%	+3.3%	-0.9%	-1.4%
Psychologists	231	+22	+8	+25	+27	+2	-3	+10.2%	+3.4%	+12.0%	+13.3%	+1.0%	-1.2%
Pharmacy	7	+1	+1	-0	+0	+1	+1	+10.9%	+11.7%	-2.9%	+0.3%	+12.8%	+9.5%
Counsellor Therapists	24	+7	+4	+6	+5	+4	+3	+41.6%	+22.7%	+34.2%	+26.1%	+20.6%	+13.8%
HSCP Trainees/ Students		-2	-1					-100.0%	-100.0%	-100.0%	-100.0%	-100.0%	-100.0%
Other Health & Social Care	36	-23	-23	-16	-15	-9	-6	-38.9%	-39.4%	-31.4%	-29.6%	-21.1%	-14.5%
Play Therapists/ Specialists	11	-3	-2	-4	-5	+0	+0	-20.1%	-17.2%	-25.1%	-29.4%	+0.4%	+1.5%
H&SC, Other	70	-21	-22	-14	-15	-5	-3	-22.8%	-23.5%	-16.5%	-17.1%	-7.1%	-4.1%
Health & Social Care Professionals	4,286	+816	+629	+546	+392	+142	+100	+23.5%	+17.2%	+14.6%	+10.1%	+3.4%	+2.4%
Executive Management	41	+12	+3	+9	+10	+5	+2	+41.0%	+7.6%	+28.6%	+32.9%	+13.6%	+6.2%
Senior Management (VIII & GM)	173	+36	+32	+29	+24	+5	-2	+26.0%	+23.1%	+19.9%	+16.4%	+3.2%	-1.0%
Management (VIII & above)	214	+48	+35	+38	+35	+10	+1	+28.6%	+19.8%	+21.5%	+19.2%	+5.0%	+0.3%
Middle Management (V-VII)	546	+167	+154	+118	+82	+35	+9	+44.0%	+39.2%	+27.7%	+17.7%	+6.9%	+1.8%
Other Administrative	13	-1	-3	-3	-2	-3	-1	-5.9%	-18.5%	-17.8%	-13.1%	-17.8%	-7.1%
Administrative/ Supervisory (V to VII)	559	+166	+151	+116	+80	+32	+8	+42.3%	+36.9%	+26.1%	+16.8%	+6.1%	+1.5%
Clerical (III & IV)	701	+94	+69	+47	+40	+15	+8	+15.5%	+10.9%	+7.2%	+6.1%	+2.2%	+1.1%
Management & Administrative	1,474	+308	+255	+201	+155	+58	+17	+26.4%	+20.9%	+15.8%	+11.8%	+4.1%	+1.2%
Catering	85	-29	-21	-20	-13	-11	-6	-25.3%	-19.9%	-18.9%	-13.6%	-11.9%	-6.5%
Household Services	389	-118	-77	-63	-30	-17	-9	-23.3%	-16.6%	-13.9%	-7.3%	-4.1%	-2.2%
Other Labs & Associated	1	-0		-0			-0	-6.5%		-3.8%			-11.5%
Other Support	137	-57	-53	-54	-51	+1	-6	-29.4%	-27.8%	-28.5%	-27.3%	+0.7%	-4.3%
Portering	18	-9	-9	-8	-10	-7	-1	-34.1%	-33.6%	-31.6%	-36.3%	-27.8%	-4.2%
Support	629	-213	-160	-145	-105	-34	-22	-25.3%	-20.3%	-18.7%	-14.3%	-5.1%	-3.3%
Maintenance	118	-7	-13	-2	+2	-4	-2	-5.6%	-10.2%	-1.8%	+1.3%	-3.0%	-1.9%
Technical Services	14	+9	+9	+8	+6	+3	+3	+176.5%	+176.5%	+131.1%	+74.1%	+27.0%	+27.0%
Maintenance/ Technical	132	+2	-4	+6	+8	-1	+1	+1.5%	-3.2%	+4.6%	+6.1%	-0.5%	+0.5%

Aug 2021 (Dec 2015 figure: 15,715)	WTE Aug 2021	WTE change since Dec 16	WTE change since Dec 17	WTE change since Dec 18	WTE change since Dec 19	WTE change since Dec 20	WTE change since Apr 21	% change since Dec 16	% change since Dec 17	% change since Dec 18	% change since Dec 19	% change since Dec 20	% change since Apr 21
Overall	19,346	+2,592	+1,949	+1,527	+1,044	+402	+232	+15.5%	+11.2%	+8.6%	+5.7%	+2.1%	+1.2%
General Support	761	-211	-164	-139	-98	-34	-21	-21.7%	-17.8%	-15.5%	-11.4%	-4.3%	-2.7%
HCA, Nurse's Aide, etc.	7,310	+1,556	+1,134	+779	+493	+218	+169	+27.1%	+18.4%	+11.9%	+7.2%	+3.1%	+2.4%
Health & Social Care Assistants	14	+3	+5	+3	+4	+3	+2	+27.4%	+50.3%	+25.4%	+42.9%	+23.7%	+13.9%
Health Care Assistants	7,323	+1,559	+1,138	+782	+497	+221	+171	+27.1%	+18.4%	+12.0%	+7.3%	+3.1%	+2.4%
Home Help	88	-8	-36	-25	-21	-6	-4	-7.9%	-28.9%	-22.0%	-19.2%	-6.2%	-3.8%
Care, other	1,702	+229	+177	+139	+62	-4	+4	+15.6%	+11.6%	+8.9%	+3.8%	-0.2%	+0.2%
Patient & Client Care	9,113	+1,781	+1,280	+896	+538	+211	+171	+24.3%	+16.3%	+10.9%	+6.3%	+2.4%	+1.9%

Source: Health Service Personnel Census