

Social Care Disability Services Employment Report: December 2020

Employment by Staff Group

Dec 2020 (Dec 2019 figure: 18,303)	WTE Nov 2020	WTE Dec 2020	WTE change since Nov 20	% change since Nov 20	WTE change since Dec 19	WTE change since Dec 19
Overall	18,873	18,944	+71	+0.4%	+642	+642
Consultants	24	24	+1	+3.5%	+1	+1
Registrars	8	8	+0	+0.4%	-5	-5
SHO/ Interns	9	9	+0	+1.6%	+2	+2
Medical/ Dental, other	14	14	-0	-0.7%	-0	-0
Medical & Dental	55	56	+1	+1.6%	-3	-3
Nurse/ Midwife Manager	896	897	+2	+0.2%	+3	+3
Nurse/ Midwife Specialist & AN/MP	65	64	-1	-2.0%	+2	+2
Staff Nurse/ Staff Midwife	2,576	2,593	+17	+0.6%	+21	+21
Public Health Nurse	7	7	+0	+4.2%	+1	+1
<i>Pre-registration Nurse/ Midwife Intern</i>	4	2.50	-1	-30.4%	-26	-26
<i>Pre-registration Nurse Intern (COVID-19)</i>	41	31.79	-9	-22.2%	+32	+32
<i>Post-registration Nurse/ Midwife Student</i>	2		-2	-100.0%		
<i>Nursing/ Midwifery awaiting registration</i>	13	13.00			-1	-1
Nursing/ Midwifery Student	59	47	-12	-20.3%	+5	+5
Nursing/ Midwifery other	24	24	-0	-0.8%	+2	+2
Nursing & Midwifery	3,627	3,632	+5	+0.1%	+34	+34
Therapy Professions	794	795	+1	+0.2%	+31	+31
Health Science/ Diagnostics	21	20	-1	-4.8%	-0	-0
Social Care	2,781	2,789	+8	+0.3%	+194	+194
Social Workers	227	228	+2	+0.7%	+9	+9
Psychologists	233	229	-4	-1.6%	+25	+25
Pharmacy	6	6	+0	+2.0%	-1	-1
H&SC, Other	80	76	-4	-5.5%	-9	-9
Health & Social Care Professionals	4,141	4,144	+2	+0.1%	+249	+249
Management (VIII & above)	204	204	+0	+0.2%	+24	+24
Administrative/ Supervisory (V to VII)	519	527	+8	+1.5%	+48	+48
Clerical (III & IV)	685	685	+1	+0.1%	+25	+25
Management & Administrative	1,407	1,416	+9	+0.6%	+97	+97
Support	675	663	-12	-1.8%	-71	-71
Maintenance/ Technical	132	132	+0	+0.3%	+8	+8
General Support	807	795	-12	-1.4%	-63	-63
Health Care Assistants	7,042	7,102	+60	+0.9%	+276	+276
Home Help	98	94	-4	-4.3%	-15	-15
Care, other	1,696	1,706	+10	+0.6%	+66	+66
Patient & Client Care	8,836	8,902	+66	+0.7%	+327	+327

Social Care Disability Services Employment by Administration (HSE / S38): December 2020

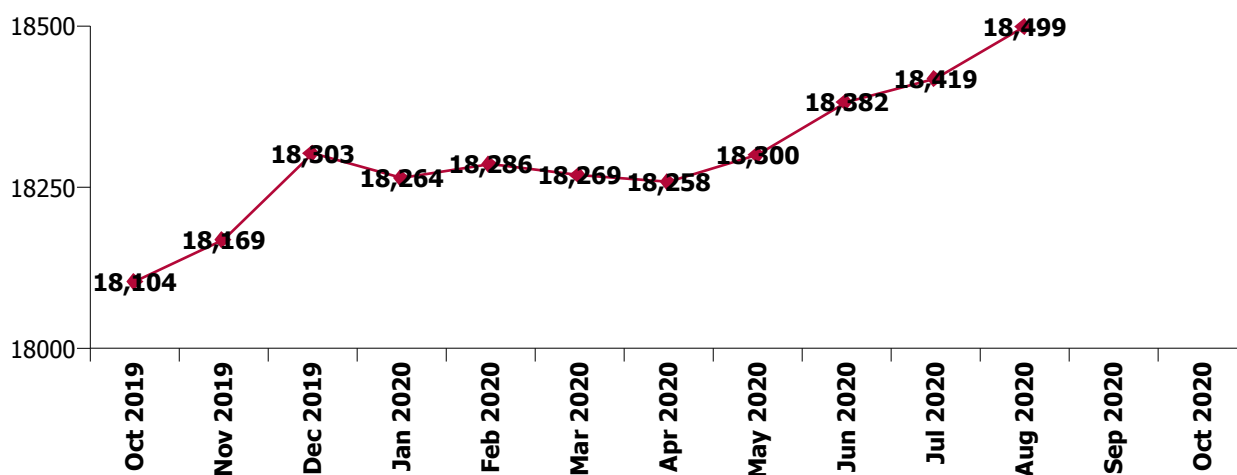
Dec 2020 (Dec 2019 figure: 18,303)	WTE Nov 2020	WTE Dec 2020	WTE change since Nov 20	% change since Nov 20	WTE change since Dec 19	WTE change since Dec 19
Overall	18,873	18,944	+71	+0.4%	+642	+642
HSE	4,085	4,085	-1	-0.0%	+182	+182
Section 38	14,788	14,860	+72	+0.5%	+460	+460

HSE

Dec 2020 (Dec 2019 figure: 3,903)	WTE Nov 2020	WTE Dec 2020	WTE change since Nov 20	% change since Nov 20	WTE change since Dec 19	WTE change since Dec 19
Overall	4,085	4,085	-1	-0.0%	+182	+182
Consultants	9	8.50			+1	+1
Registrars	1	1.00			-2	-2
SHO/ Interns	2	2.00			+2	+2
Medical/ Dental, other	6	6.23	-0	-1.6%	-0	-0
Medical & Dental	18	18	-0	-0.6%	+1	+1
Nurse/ Midwife Manager	265	261.08	-4	-1.4%	+3	+3
Nurse/ Midwife Specialist & AN/MP	15	14.76	+0	+1.4%	+1	+1
Staff Nurse/ Staff Midwife	770	772.27	+3	+0.3%	-19	-19
Public Health Nurse	7	6.89	+0	+4.2%	+1	+1
Pre-registration Nurse/ Midwife Intern	4	2.50	-1	-30.4%	-1	-1
Pre-registration Nurse Intern (COVID-19)	17	8.57	-9	-49.8%	+9	+9
Nursing/ Midwifery awaiting registration	13	13.00			-1	-1
Nursing/ Midwifery Student	34	24.07	-10	-28.5%	+7	+7
Nursing/ Midwifery other	8	6.71	-1	-14.6%	-1	-1
Nursing & Midwifery	1,097	1,086	-12	-1.1%	-8	-8
Therapy Professions	372	372.72	+0	+0.1%	+41	+41
Health Science/ Diagnostics	4	3.95			+2	+2
Social Care	98	100.70	+2	+2.5%	+12	+12
Social Workers	67	66.60	-1	-1.3%	+9	+9
Psychologists	87	82.56	-5	-5.6%	+6	+6
H&SC, Other	25	25.12	+0	+1.5%	-1	-1
Health & Social Care Professionals	654	652	-3	-0.4%	+69	+69
Management (VIII & above)	59	57.90	-1	-2.3%	+13	+13
Administrative/ Supervisory (V to VII)	163	168.42	+6	+3.5%	+27	+27
Clerical (III & IV)	196	198.56	+2	+1.2%	+20	+20
Management & Administrative	418	425	+7	+1.6%	+61	+61
Support	87	87.80	+1	+0.9%	-1	-1
Maintenance/ Technical	25	26.15	+1	+5.7%	+5	+5
General Support	112	114	+2	+2.0%	+5	+5
Health Care Assistants	1,547	1,556.97	+10	+0.6%	+39	+39
Home Help	98	93.75	-4	-4.3%	-15	-15
Care, other	141	140.02	-1	-0.4%	+31	+31
Patient & Client Care	1,786	1,791	+5	+0.3%	+55	+55

Section 38

Dec 2020 (Dec 2019 figure: 14,400)	WTE Nov 2020	WTE Dec 2020	WTE change since Nov 20	% change since Nov 20	WTE change since Dec 19	WTE change since Dec 19
Overall	14,788	14,860	+72	+0.5%	+460	+460
Consultants	15	15.90	+1	+5.4%	-0	-0
Registrars	7	7.00	+0	+0.4%	-3	-3
SHO/ Interns	7	7.00	+0	+2.0%	+0	+0
Medical/ Dental, other	8	8.09				
Medical & Dental	37	38	+1	+2.7%	-3	-3
Nurse/ Midwife Manager	631	635.97	+5	+0.9%	+1	+1
Nurse/ Midwife Specialist & AN/MP	51	49.23	-2	-3.0%	+1	+1
Staff Nurse/ Staff Midwife	1,807	1,820.84	+14	+0.8%	+40	+40
Pre-registration Nurse/ Midwife Intern				-100.0%	-25	-25
Pre-registration Nurse Intern (COVID-19)	24	23.22	-1	-2.4%	+23	+23
Post-registration Nurse/ Midwife Student	2		-2	-100.0%		
Nursing/ Midwifery Student	26	23.22	-2	-9.5%	-2	-2
Nursing/ Midwifery other	16	17.11	+1	+5.9%	+3	+3
Nursing & Midwifery	2,530	2,546	+17	+0.7%	+42	+42
Therapy Professions	422	422.57	+1	+0.2%	-10	-10
Health Science/ Diagnostics	17	16.00	-1	-5.9%	-2	-2
Social Care	2,682	2,688.52	+6	+0.2%	+182	+182
Social Workers	159	161.62	+2	+1.6%	+0	+0
Psychologists	146	146.65	+1	+0.7%	+19	+19
Pharmacy	6	6.02	+0	+2.0%	-1	-1
H&SC, Other	55	50.58	-5	-8.7%	-8	-8
Health & Social Care Professionals	3,487	3,492	+5	+0.1%	+180	+180
Management (VIII & above)	144	146.02	+2	+1.2%	+11	+11
Administrative/ Supervisory (V to VII)	356	358.46	+2	+0.7%	+21	+21
Clerical (III & IV)	489	486.63	-2	-0.4%	+5	+5
Management & Administrative	989	991	+2	+0.2%	+37	+37
General Support	695	681	-14	-2.0%	-68	-68
Patient & Client Care	7,050	7,111	+61	+0.9%	+272	+272



Social Care Disability Services Employment by CHO Dec 2020

CHO 1

Dec 2020 (Dec 2019 figure: 1,498)	WTE Nov 2020	WTE Dec 2020	WTE change since Nov 20	% change since Nov 20	WTE change since Dec 19	WTE change since Dec 19
Overall	1,557	1,547	-10	-0.6%	+48	+48
Consultants				-100.0%		
Medical/ Dental, other	3	3	-0	-3.3%	-0	-0
Medical & Dental	3	3	-0	-3.3%	-0	-0
Nurse/ Midwife Manager	110	106	-3	-2.9%	+1	+1
Nurse/ Midwife Specialist & AN/MP	9	9	+0	+0.4%	+2	+2
Staff Nurse/ Staff Midwife	328	328	+1	+0.2%	+5	+5
Pre-registration Nurse/ Midwife Intern				-100.0%	-11	-3
Pre-registration Nurse Intern (COVID-19)	13	6	-6	-49.0%	+6	+6
Nursing/ Midwifery awaiting registration	11	11			+11	
Nursing/ Midwifery Student	24	17	-6	-26.3%	+3	+3
Nursing/ Midwifery other	5	4	-1	-20.5%	-1	-1
Nursing & Midwifery	475	465	-10	-2.0%	+10	+10
Therapy Professions	44	44	-0	-0.4%	+1	+1
Social Care	10	11	+1	+14.8%	+4	+4
Social Workers	19	19	-0	-0.2%	+3	+3
Psychologists	10	7	-3	-28.3%	+3	+3
H&SC, Other	9	10	+0	+3.2%	-3	-3
Health & Social Care Professionals	92	91	-1	-1.5%	+8	+8
Management (VIII & above)	16	17	+1	+4.3%	+3	+3
Administrative/ Supervisory (V to VII)	34	34	-0	-0.2%	+7	+7
Clerical (III & IV)	51	53	+1	+2.3%	+3	+3
Management & Administrative	102	103	+2	+1.8%	+12	+12
Support	49	49	-0	-0.6%	-0	-0
Maintenance/ Technical	6	6	+0	+1.2%		
General Support	55	55	-0	-0.5%	-0	-0
Health Care Assistants	773	775	+2	+0.3%	+14	+14
Home Help	14	14	-0	-3.3%	+1	+1
Care, other	43	41	-2	-4.4%	+4	+4
Patient & Client Care	830	830	-0	-0.0%	+18	+18

CHO 2

Dec 2020 (Dec 2019 figure: 1,497)	WTE Nov 2020	WTE Dec 2020	WTE change since Nov 20	% change since Nov 20	WTE change since Dec 19	WTE change since Dec 19
Overall	1,505	1,516	+11	+0.7%	+19	+19
Consultants	3	3				
Registrars	2	2				
Medical/ Dental, other	1	1				
Medical & Dental	6	6				
Nurse/ Midwife Manager	77	78	+1	+1.0%	+0	+0
Nurse/ Midwife Specialist & AN/MP	6	6			-0	-0
Staff Nurse/ Staff Midwife	162	169	+7	+4.5%	+4	+4
<i>Pre-registration Nurse Intern (COVID-19)</i>	1	1	+0	+21.8%	+1	+1
Nursing/ Midwifery Student	1	1	+0	+21.8%	+1	+1
Nursing & Midwifery	245	253	+8	+3.3%	+5	+5
Therapy Professions	35	34	-1	-2.6%	-7	-7
Social Care	241	243	+2	+1.0%	+22	+22
Social Workers	25	26	+1	+2.1%	-0	-0
Psychologists	15	14	-1	-3.9%	-2	-2
H&SC, Other	16	12	-4	-26.3%	-4	-4
Health & Social Care Professionals	332	329	-3	-0.8%	+8	+8
Management (VIII & above)	17	16	-1	-6.3%	-0	-0
Administrative/ Supervisory (V to VII)	43	44	+1	+2.8%	+4	+4
Clerical (III & IV)	50	50	+0	+0.6%	+0	+0
Management & Administrative	110	110	+0	+0.4%	+4	+4
Support	43	43	+0	+0.3%	-2	-2
Maintenance/ Technical	13	13			-0	-0
General Support	56	56	+0	+0.2%	-2	-2
Health Care Assistants	620	625	+5	+0.8%	+2	+2
Care, other	135	136	+0	+0.1%	+2	+2
Patient & Client Care	756	761	+5	+0.7%	+3	+3

CHO 3

Dec 2020 (Dec 2019 figure: 1,823)	WTE Nov 2020	WTE Dec 2020	WTE change since Nov 20	% change since Nov 20	WTE change since Dec 19	WTE change since Dec 19
Overall	1,929	1,947	+19	+1.0%	+124	+124
Consultants	1	2	+1	+74.5%	+1	+1
Medical/ Dental, other	1	1				
Medical & Dental	2	3	+1	+40.4%	+1	+1
Nurse/ Midwife Manager	73	75	+2	+2.3%	-1	-1
Nurse/ Midwife Specialist & AN/MP	11	10	-1	-6.9%	-2	-2
Staff Nurse/ Staff Midwife	270	271	+1	+0.2%	+23	+23
<i>Pre-registration Nurse/ Midwife Intern</i>				-100.0%	-7	-12
<i>Pre-registration Nurse Intern (COVID-19)</i>	1	2	+0	+8.7%	+2	+2
Nursing/ Midwifery Student	1	2	+0	+8.7%	-10	-10
Nursing/ Midwifery other	4	4				
Nursing & Midwifery	360	361	+2	+0.5%	+10	+10
Therapy Professions	82	84	+1	+1.8%	+10	+10
Health Science/ Diagnostics	2	2			+2	+2
Social Care	276	284	+8	+3.0%	+43	+43
Social Workers	16	17	+2	+11.1%	+1	+1
Psychologists	20	20	+0	+0.6%	+4	+4
H&SC, Other	11	11			-1	-1
Health & Social Care Professionals	407	419	+12	+2.8%	+59	+59
Management (VIII & above)	8	8	+0	+0.3%	+1	+1
Administrative/ Supervisory (V to VII)	46	45	-1	-2.8%	+4	+4
Clerical (III & IV)	60	59	-1	-2.0%	-0	-0
Management & Administrative	114	111	-2	-2.1%	+5	+5
Support	54	53	-1	-1.1%	+1	+1
Maintenance/ Technical	18	19	+1	+7.4%	+5	+5
General Support	72	73	+1	+1.0%	+5	+5
Health Care Assistants	794	800	+5	+0.7%	+35	+35
Care, other	180	181	+1	+0.6%	+8	+8
Patient & Client Care	974	981	+7	+0.7%	+44	+44

CHO 4

Dec 2020 (Dec 2019 figure: 2,439)	WTE Nov 2020	WTE Dec 2020	WTE change since Nov 20	% change since Nov 20	WTE change since Dec 19	WTE change since Dec 19
Overall	2,546	2,556	+9	+0.4%	+117	+117
Consultants	3	3			+1	+1
Medical/ Dental, other	0	0				
Medical & Dental	3	3			+1	+1
Nurse/ Midwife Manager	90	91	+0	+0.5%	+1	+1
Nurse/ Midwife Specialist & AN/MP	14	14			+1	+1
Staff Nurse/ Staff Midwife	300	312	+12	+4.0%	+3	+3
Pre-registration Nurse/ Midwife Intern				-100.0%	-8	-6
Pre-registration Nurse Intern (COVID-19)	17	8	-9	-55.6%	+8	+8
Nursing/ Midwifery awaiting registration	2	2			+2	+1
Nursing/ Midwifery Student	19	10	-9	-49.7%	+3	+3
Nursing/ Midwifery other				-100.0%	-1	-1
Nursing & Midwifery	424	427	+3	+0.7%	+8	+8
Therapy Professions	103	104	+1	+0.6%	-4	-4
Social Care	244	238	-5	-2.2%	+12	+12
Social Workers	27	27	+0	+1.5%	+0	+0
Psychologists	36	36	-0	-0.2%	+1	+1
H&SC, Other	10	10	+0	+1.6%	+2	+2
Health & Social Care Professionals	419	415	-4	-1.0%	+11	+11
Management (VIII & above)	21	22	+1	+4.6%	+0	+0
Administrative/ Supervisory (V to VII)	58	58	-1	-1.4%	+4	+4
Clerical (III & IV)	90	90	-0	-0.4%	+5	+5
Management & Administrative	170	170	-0	-0.1%	+10	+10
Support	143	139	-5	-3.4%	-2	-2
Maintenance/ Technical	13	12	-1	-7.6%	+2	+2
General Support	157	151	-6	-3.8%	-1	-1
Health Care Assistants	1,053	1,058	+6	+0.5%	+64	+64
Care, other	321	332	+11	+3.4%	+25	+25
Patient & Client Care	1,374	1,390	+16	+1.2%	+88	+88

CHO 5

Dec 2020 (Dec 2019 figure: 1,505)	WTE Nov 2020	WTE Dec 2020	WTE change since Nov 20	% change since Nov 20	WTE change since Dec 19	WTE change since Dec 19
Overall	1,541	1,563	+22	+1.4%	+58	+58
Consultants	1	1			-0	-0
Medical/ Dental, other				-100.0%		
Medical & Dental	1	1			-0	-0
Nurse/ Midwife Manager	71	70	-1	-1.3%	+4	+4
Nurse/ Midwife Specialist & AN/MP	2	2	+0	+8.5%	+0	+0
Staff Nurse/ Staff Midwife	161	168	+7	+4.3%	-2	-2
Public Health Nurse	6	6	+0	+4.4%	+1	+1
<i>Pre-registration Nurse Intern (COVID-19)</i>	4	1	-3	-73.5%	+1	+1
<i>Post-registration Nurse/ Midwife Student</i>	2		-2	-100.0%		
<i>Nursing/ Midwifery awaiting registration</i>				-100.0%		-2
Nursing/ Midwifery Student	6	1	-5	-82.3%	-1	-1
Nursing & Midwifery	245	247	+2	+0.7%	+2	+2
Therapy Professions	63	65	+2	+2.9%	+2	+2
Social Care	144	143	-1	-0.5%	-11	-11
Social Workers	25	24	-0	-1.7%	+3	+3
Psychologists	19	19	-0	-0.9%	+5	+5
H&SC, Other	5	5	+0	+4.9%	-2	-2
Health & Social Care Professionals	256	256	+1	+0.3%	-2	-2
Management (VIII & above)	13	13	+0	+0.3%	+2	+2
Administrative/ Supervisory (V to VII)	40	41	+0	+1.1%	+2	+2
Clerical (III & IV)	62	62	-0	-0.2%	+1	+1
Management & Administrative	115	115	+0	+0.3%	+5	+5
Support	13	12	-1	-7.4%	-3	-3
Maintenance/ Technical	7	7				
General Support	20	19	-1	-4.7%	-3	-3
Health Care Assistants	709	732	+23	+3.2%	+61	+61
Home Help	44	40	-4	-9.0%	-14	-14
Care, other	152	153	+1	+0.7%	+9	+9
Patient & Client Care	904	924	+20	+2.2%	+56	+56

CHO 6

Dec 2020 (Dec 2019 figure: 1,198)	WTE Nov 2020	WTE Dec 2020	WTE change since Nov 20	% change since Nov 20	WTE change since Dec 19	WTE change since Dec 19
Overall	1,233	1,217	-17	-1.4%	+19	+19
Consultants	3	3				
Medical/ Dental, other	1	1				
Medical & Dental	4	4				
Nurse/ Midwife Manager	42	43	+1	+2.4%	-0	-0
Staff Nurse/ Staff Midwife	145	142	-3	-2.2%	-5	-5
Nursing & Midwifery	188	186	-2	-1.1%	-5	-5
Therapy Professions	42	42	+1	+2.1%	+1	+1
Social Care	363	361	-2	-0.5%	+27	+27
Social Workers	10	10			-1	-1
Psychologists	15	14	-2	-12.3%	-0	-0
H&SC, Other	1	1	-0	-8.6%	-1	-1
Health & Social Care Professionals	431	428	-3	-0.7%	+25	+25
Management (VIII & above)	32	30	-2	-4.9%	-1	-1
Administrative/ Supervisory (V to VII)	54	54	+0	+0.2%	+1	+1
Clerical (III & IV)	56	56	-1	-1.4%	+2	+2
Management & Administrative	142	140	-2	-1.6%	+2	+2
Support	27	26	-1	-3.9%	+3	+3
Maintenance/ Technical	6	5	-1	-16.7%	-2	-2
General Support	33	31	-2	-6.3%	+1	+1
Health Care Assistants	186	184	-3	-1.5%	-3	-3
Care, other	250	245	-5	-1.9%	-2	-2
Patient & Client Care	436	428	-7	-1.7%	-5	-5

CHO 7

Dec 2020 (Dec 2019 figure: 2,982)	WTE Nov 2020	WTE Dec 2020	WTE change since Nov 20	% change since Nov 20	WTE change since Dec 19	WTE change since Dec 19
Overall	3,077	3,103	+26	+0.9%	+122	+122
Consultants	1	1				
Registrars	3	3	+0	+1.0%		
SHO/ Interns	7	7	+0	+2.0%	+0	+0
Medical/ Dental, other	1	1				
Medical & Dental	11	12	+0	+1.5%	+0	+0
Nurse/ Midwife Manager	116	118	+3	+2.4%	-4	-4
Nurse/ Midwife Specialist & AN/MP	4	4			-1	-1
Staff Nurse/ Staff Midwife	377	378	+1	+0.1%	+4	+4
Nursing/ Midwifery other	2	2			+1	+1
Nursing & Midwifery	499	502	+3	+0.7%	+0	+0
Therapy Professions	137	138	+2	+1.2%	+17	+17
Health Science/ Diagnostics	3	3				
Social Care	383	389	+6	+1.5%	+29	+29
Social Workers	33	32	-1	-2.9%	-2	-2
Psychologists	31	32	+1	+4.2%	+4	+4
Pharmacy	4	4	+0	+3.1%	-1	-1
H&SC, Other	2	2				
Health & Social Care Professionals	592	600	+8	+1.3%	+47	+47
Management (VIII & above)	44	43	-1	-2.5%	+11	+11
Administrative/ Supervisory (V to VII)	87	92	+5	+5.5%	+13	+13
Clerical (III & IV)	99	101	+2	+1.9%	+9	+9
Management & Administrative	230	236	+6	+2.4%	+33	+33
Support	157	155	-1	-0.9%	-11	-11
Maintenance/ Technical	32	33	+1	+3.3%	+4	+4
General Support	188	188	-0	-0.2%	-7	-7
Health Care Assistants	1,140	1,146	+6	+0.5%	+34	+34
Home Help	17	17	-0	-1.0%	-2	-2
Care, other	399	403	+4	+0.9%	+17	+17
Patient & Client Care	1,557	1,566	+10	+0.6%	+49	+49

CHO 8

Dec 2020 (Dec 2019 figure: 2,162)	WTE Nov 2020	WTE Dec 2020	WTE change since Nov 20	% change since Nov 20	WTE change since Dec 19	WTE change since Dec 19
Overall	2,194	2,205	+12	+0.5%	+43	+43
Consultants	1	1				
Registrars	1	1			-1	-1
Medical/ Dental, other	1	1				
Medical & Dental	3	3			-1	-1
Nurse/ Midwife Manager	119	119	+0	+0.1%	-4	-4
Nurse/ Midwife Specialist & AN/MP	7	6	-1	-10.5%	-1	-1
Staff Nurse/ Staff Midwife	316	312	-4	-1.4%	-7	-7
Public Health Nurse	1	1	+0	+3.2%	+0	+0
Pre-registration Nurse/ Midwife Intern				-100.0%	-1	
Pre-registration Nurse Intern (COVID-19)	5	4	-1	-17.7%	+4	+4
Nursing/ Midwifery Student	5	4	-1	-17.7%	+4	+4
Nursing/ Midwifery other	6	7	+1	+16.9%	+1	+1
Nursing & Midwifery	454	449	-5	-1.1%	-6	-6
Therapy Professions	98	98	+0	+0.2%	+6	+6
Health Science/ Diagnostics	2	2				
Social Care	377	380	+2	+0.6%	+19	+19
Social Workers	24	24	-0	-0.2%	+0	+0
Psychologists	24	22	-1	-5.5%	-2	-2
H&SC, Other	7	6	-1	-12.4%	-1	-1
Health & Social Care Professionals	532	533	+0	+0.1%	+22	+22
Management (VIII & above)	13	13	+1	+4.3%	+5	+5
Administrative/ Supervisory (V to VII)	54	56	+2	+4.5%	+0	+0
Clerical (III & IV)	88	88	-0	-0.5%	+3	+3
Management & Administrative	155	157	+2	+1.6%	+8	+8
Support	43	41	-2	-4.8%	-5	-5
Maintenance/ Technical	14	14			-2	-2
General Support	57	55	-2	-3.6%	-7	-7
Health Care Assistants	853	872	+19	+2.2%	+28	+28
Home Help	23	23	+0	+1.5%	+0	+0
Care, other	117	114	-3	-2.6%	-1	-1
Patient & Client Care	992	1,008	+16	+1.6%	+27	+27

CHO 9

Dec 2020 (Dec 2019 figure: 3,194)	WTE Nov 2020	WTE Dec 2020	WTE change since Nov 20	% change since Nov 20	WTE change since Dec 19	WTE change since Dec 19
Overall	3,285	3,285	-1	-0.0%	+91	+91
Consultants	11	11			-1	-1
Registrars	2	2			-4	-4
SHO/ Interns	2	2			+2	+2
Medical/ Dental, other	6	6				
Medical & Dental	21	21			-3	-3
Nurse/ Midwife Manager	197	196	-1	-0.5%	+4	+4
Nurse/ Midwife Specialist & AN/MP	12	12			+3	+3
Staff Nurse/ Staff Midwife	516	513	-4	-0.8%	-5	-5
Pre-registration Nurse/ Midwife Intern	4	3	-1	-30.4%	-6	-5
Pre-registration Nurse Intern (COVID-19)	1	11	+10	+1756.1%	+11	+11
Nursing/ Midwifery Student	4	13	+9	+214.4%	+5	+5
Nursing/ Midwifery other	8	8	-0	-1.8%	+1	+1
Nursing & Midwifery	738	741	+4	+0.5%	+9	+9
Therapy Professions	191	187	-4	-2.2%	+5	+5
Health Science/ Diagnostics	14	13	-1	-7.1%	-2	-2
Social Care	744	740	-4	-0.5%	+51	+51
Social Workers	49	50	+0	+0.8%	+5	+5
Psychologists	63	64	+2	+2.7%	+11	+11
Pharmacy	2	2				
H&SC, Other	18	18			-1	-1
Health & Social Care Professionals	1,080	1,073	-7	-0.6%	+70	+70
Management (VIII & above)	40	41	+2	+4.6%	+4	+4
Administrative/ Supervisory (V to VII)	99	100	+1	+1.2%	+13	+13
Clerical (III & IV)	126	126	+0	+0.1%	+1	+1
Management & Administrative	265	268	+3	+1.2%	+18	+18
Support	146	145	-1	-0.6%	-51	-51
Maintenance/ Technical	23	23			+1	+1
General Support	169	168	-1	-0.6%	-50	-50
Health Care Assistants	914	911	-3	-0.3%	+42	+42
Care, other	99	102	+3	+2.9%	+5	+5
Patient & Client Care	1,012	1,013	+0	+0.0%	+47	+47

other Community Services

Dec 2020 (Dec 2019 figure: 5)	WTE Nov 2020	WTE Dec 2020	WTE change since Nov 20	% change since Nov 20	WTE change since Dec 19	WTE change since Dec 19
Overall	6	6			+1	+1
Management (VIII & above)	1	1				
Administrative/ Supervisory (V to VII)	3	3			+1	+1
Clerical (III & IV)	2	2				
Management & Administrative	6	6			+1	+1

Social Care Disability Services Employment by CHO & Admin : Dec 2020

Dec 2020 (Dec 2019 figure: 18,303)	WTE Nov 2020	WTE Dec 2020	WTE change since Nov 20	% change since Nov 20	WTE change since Dec 19	WTE change since Dec 19
Overall	18,873	18,944	+71	+0.4%	+642	+642
CHO 1	1,557	1,547	-10	-0.6%	+48	+48
Health Service Executive	215	218	+3	+1.3%	+10	+10
Bros. of Charity, West Region	1,289	1,298	+8	+0.6%	+9	+9
Section 38 Voluntary Agencies	1,289	1,298	+8	+0.6%	+9	+9
CHO 2	1,505	1,516	+11	+0.7%	+19	+19
Health Service Executive	143	145	+2	+1.7%	+23	+23
Bros. of Charity, Clare	368	372	+4	+1.0%	+24	+24
Bros. of Charity, Limerick	580	592	+12	+2.1%	+72	+72
Daughters of Charity, Limerick	548	549	+1	+0.2%	+6	+6
Daughters of Charity, Roscrea	290	289	-1	-0.3%	-1	-1
Section 38 Voluntary Agencies	1,786	1,802	+16	+0.9%	+101	+101
CHO 3	1,929	1,947	+19	+1.0%	+124	+124
Health Service Executive	307	313	+7	+2.2%	+21	+21
Bros. of Charity, Southern	770	776	+5	+0.7%	+35	+35
Cope Foundation	1,146	1,147	+0	+0.0%	+56	+56
St. John of God, Kerry	323	320	-3	-1.0%	+5	+5
Section 38 Voluntary Agencies	2,240	2,242	+3	+0.1%	+96	+96
CHO 4	2,546	2,556	+9	+0.4%	+117	+117
Health Service Executive	395	394	-0	-0.1%	+13	+13
Bros. of Charity, Waterford	650	668	+18	+2.7%	+38	+38
Carriglea Cairde Services	208	214	+5	+2.6%	-1	-1
St. Patrick's, Kilkenny	288	287	-1	-0.3%	+8	+8
Section 38 Voluntary Agencies	1,146	1,169	+22	+1.9%	+45	+45
CHO 5	1,541	1,563	+22	+1.4%	+58	+58
Health Service Executive	246	243	-2	-1.0%	+10	+10
Children's Sunshine Home	57	56	-1	-1.8%	-3	-3
St. John of God (IDS)	467	468	+1	+0.2%	+11	+11
Sunbeam House Services	464	450	-14	-3.1%	+0	+0
Section 38 Voluntary Agencies	988	973	-15	-1.5%	+9	+9
CHO 6	1,233	1,217	-17	-1.4%	+19	+19
Health Service Executive	132	135	+3	+2.5%	+35	+35
Cheeverstown House	390	395	+5	+1.3%	-2	-2
Kare, Newbridge, Co Kildare	372	377	+5	+1.2%	+17	+17
Peamount Hospital (Newcastle)	477	483	+6	+1.2%	-4	-4
Stewart's Hospital, (Palmerstown)	913	914	+1	+0.1%	+62	+62
St. John of God Liffey Services	794	801	+6	+0.8%	+13	+13
Section 38 Voluntary Agencies	2,945	2,968	+23	+0.8%	+87	+87
CHO 7	3,077	3,103	+26	+0.9%	+122	+122
Health Service Executive	610	611	+0	+0.0%	+0	+0
Muiriosa Foundation, Laois/Offaly	313	320	+7	+2.4%	+19	+19
Muiriosa Foundation, Longford/Westmeath	281	284	+3	+0.9%	+14	+14
Muiriosa Foundation, South Kildare	342	342	+0	+0.1%	+8	+8
St. John of God, Drumcar	647	648	+1	+0.2%	+2	+2

Dec 2020 (Dec 2019 figure: 18,303)	WTE Nov 2020	WTE Dec 2020	WTE change since Nov 20	% change since Nov 20	WTE change since Dec 19	WTE change since Dec 19
Overall	18,873	18,944	+71	+0.4%	+642	+642
Section 38 Voluntary Agencies	1,583	1,595	+12	+0.7%	+43	+43
CHO 8	2,194	2,205	+12	+0.5%	+43	+43
Health Service Executive	476	472	-3	-0.7%	+22	+22
Central Remedial Clinic	297	296	-1	-0.4%	+17	+17
Daughters of Charity, Dublin	1,064	1,063	-1	-0.1%	+29	+29
St. Michael's House, Dublin	1,449	1,453	+4	+0.3%	+23	+23
Section 38 Voluntary Agencies	2,810	2,812	+2	+0.1%	+69	+69
CHO 9	3,285	3,285	-1	-0.0%	+91	+91
other Community Services	6	6			+1	+1

Social Care Disability Services Employment by CHO Dec 2020

Bros. of Charity, Clare

Dec 2020 (Dec 2019 figure: 348)	WTE Nov 2020	WTE Dec 2020	WTE change since Nov 20	% change since Nov 20	WTE change since Dec 19	WTE change since Dec 19
Overall	368	372	+4	+1.0%	+24	+24
Consultants	0	0	+0	+30.0%	+0	+0
Medical & Dental	0	0	+0	+30.0%	+0	+0
Nurse/ Midwife Manager				-100.0%		
Staff Nurse/ Staff Midwife	2	2	+0	+2.6%	+0	+0
<i>Pre-registration Nurse Intern (COVID-19)</i>	0	1	+1	+163.2%	+1	+1
Nursing/ Midwifery Student	0	1	+1	+163.2%	+1	+1
Nursing & Midwifery	2	3	+1	+29.3%	+1	+1
Social Care	83	85	+2	+2.3%	+3	+3
Social Workers	2	3	+1	+25.0%	+0	+0
Psychologists	3	3				
H&SC, Other	4	4			-0	-0
Health & Social Care Professionals	92	94	+3	+2.7%	+3	+3
Management (VIII & above)	1	1				
Administrative/ Supervisory (V to VII)	5	5	-0	-3.0%	+0	+0
Clerical (III & IV)	5	5	+0	+1.0%	+1	+1
Management & Administrative	11	11	-0	-0.9%	+1	+1
Health Care Assistants	231	232	+1	+0.6%	+20	+20
Care, other	32	31	-1	-2.2%	-1	-1
Patient & Client Care	263	264	+1	+0.3%	+19	+19

Dec 2020 (Dec 2019 figure: 520)	WTE Nov 2020	WTE Dec 2020	WTE change since Nov 20	% change since Nov 20	WTE change since Dec 19	WTE change since Dec 19
Overall	580	592	+12	+2.1%	+72	+72
Consultants	1	2	+1	+79.0%	+1	+1
Medical & Dental	1	2	+1	+79.0%	+1	+1
Nurse/ Midwife Manager	26	28	+2	+6.3%	+3	+3
Nurse/ Midwife Specialist & AN/MP	4	4			-1	-1
Staff Nurse/ Staff Midwife	97	98	+1	+1.1%	+14	+14
Nursing & Midwifery	127	130	+3	+2.2%	+16	+16
Therapy Professions	15	15			+3	+3
Social Care	102	105	+2	+2.4%	+20	+20
Social Workers	4	5	+1	+24.4%	+0	+0
Psychologists	6	6	-0	-1.4%		
H&SC, Other	1	1			-0	-0
Health & Social Care Professionals	128	131	+3	+2.7%	+23	+23
Management (VIII & above)	2	2				
Administrative/ Supervisory (V to VII)	6	6	-0	-0.7%	+0	+0
Clerical (III & IV)	12	11	-1	-8.5%	-2	-2
Management & Administrative	20	19	-1	-5.3%	-2	-2
Support	7	6	-1	-8.8%	-1	-1
Maintenance/ Technical	2	2			-0	-0
General Support	9	8	-1	-6.8%	-1	-1
Health Care Assistants	199	204	+5	+2.7%	+25	+25
Care, other	97	98	+2	+1.7%	+11	+11
Patient & Client Care	296	303	+7	+2.4%	+36	+36

Dec 2020 (Dec 2019 figure: 740)	WTE Nov 2020	WTE Dec 2020	WTE change since Nov 20	% change since Nov 20	WTE change since Dec 19	WTE change since Dec 19
Overall	770	776	+5	+0.7%	+35	+35
Nurse/ Midwife Manager	15	15	+0	+0.0%	-0	-0
Nurse/ Midwife Specialist & AN/MP	3	3				
Staff Nurse/ Staff Midwife	56	56	-0	-0.7%	-3	-3
Nursing & Midwifery	74	73	-0	-0.5%	-4	-4
Therapy Professions	45	46	+1	+2.6%	-2	-2
Social Care	127	123	-5	-3.6%	-2	-2
Social Workers	17	17	+0	+2.4%	+0	+0
Psychologists	21	21	-0	-1.4%	+1	+1
Health & Social Care Professionals	210	207	-3	-1.6%	-3	-3
Management (VIII & above)	7	8	+1	+14.7%	+0	+0
Administrative/ Supervisory (V to VII)	11	10	-1	-5.8%	+1	+1
Clerical (III & IV)	33	35	+2	+5.1%	+2	+2
Management & Administrative	51	53	+2	+4.1%	+3	+3
Support	14	14	+0	+1.6%	-1	-1
Maintenance/ Technical	4	3	-1	-28.5%	+1	+1
General Support	17	16	-1	-4.5%	+0	+0
Health Care Assistants	222	222	+0	+0.1%	+15	+15
Care, other	197	204	+8	+3.9%	+23	+23
Patient & Client Care	418	426	+8	+1.9%	+38	+38

Dec 2020 (Dec 2019 figure: 630)	WTE Nov 2020	WTE Dec 2020	WTE change since Nov 20	% change since Nov 20	WTE change since Dec 19	WTE change since Dec 19
Overall	650	668	+18	+2.7%	+38	+38
Consultants	1	1			-0	-0
Medical & Dental	1	1			-0	-0
Nurse/ Midwife Manager	23	22	-0	-0.8%	-2	-2
Staff Nurse/ Staff Midwife	46	50	+3	+7.1%	+2	+2
Nursing & Midwifery	69	72	+3	+4.5%	-0	-0
Therapy Professions	1	1			-2	-2
Social Care	71	70	-0	-0.4%	+4	+4
Social Workers	8	8			-2	-2
Psychologists	4	4			-0	-0
H&SC, Other	4	4			-0	-0
Health & Social Care Professionals	87	87	-0	-0.3%	+0	+0
Management (VIII & above)	5	5	+0	+1.0%	+0	+0
Administrative/ Supervisory (V to VII)	16	16	+0	+0.9%	+3	+3
Clerical (III & IV)	27	27	+0	+1.6%	+1	+1
Management & Administrative	47	48	+1	+1.3%	+5	+5
Support	1	1			-0	-0
Maintenance/ Technical	3	3				
General Support	4	4			-0	-0
Health Care Assistants	347	362	+16	+4.5%	+31	+31
Care, other	95	94	-1	-1.3%	+3	+3
Patient & Client Care	441	456	+14	+3.3%	+34	+34

Carriglea Cairde Services

Dec 2020 (Dec 2019 figure: 214)	WTE Nov 2020	WTE Dec 2020	WTE change since Nov 20	% change since Nov 20	WTE change since Dec 19	WTE change since Dec 19
Overall	208	214	+5	+2.6%	-1	-1
Nurse/ Midwife Manager	13	13	+0	+0.5%	+1	+1
Staff Nurse/ Staff Midwife	25	27	+2	+10.0%	+1	+1
<i>Post-registration Nurse/ Midwife Student</i>	2		-2	-100.0%		
Nursing/ Midwifery Student	2		-2	-100.0%		
Nursing & Midwifery	39	40	+1	+1.6%	+2	+2
Social Care	31	30	-0	-1.0%	-6	-6
Health & Social Care Professionals	31	30	-0	-1.0%	-6	-6
Management (VIII & above)	2	2				
Administrative/ Supervisory (V to VII)	3	3			+0	+0
Clerical (III & IV)	6	6			-0	-0
Management & Administrative	11	11			-0	-0
Support	6	6	+0	+1.6%	+2	+2
Maintenance/ Technical	1	1				
General Support	8	8	+0	+1.3%	+2	+2
Health Care Assistants	75	80	+4	+5.7%	+6	+6
Care, other	44	45	+1	+1.3%	-4	-4
Patient & Client Care	120	125	+5	+4.1%	+2	+2

Central Remedial Clinic

Dec 2020 (Dec 2019 figure: 278)	WTE Nov 2020	WTE Dec 2020	WTE change since Nov 20	% change since Nov 20	WTE change since Dec 19	WTE change since Dec 19
Overall	297	296	-1	-0.4%	+17	+17
Consultants	1	1				
Medical/ Dental, other	0	0				
Medical & Dental	2	2				
Nurse/ Midwife Manager	2	2				
Nurse/ Midwife Specialist & AN/MP	2	2			+1	+1
Staff Nurse/ Staff Midwife	4	4			+1	+1
Nursing/ Midwifery other	1	1			+1	+1
Nursing & Midwifery	9	9			+3	+3
Therapy Professions	80	78	-2	-2.7%	+0	+0
Health Science/ Diagnostics	14	13	-1	-7.1%	-2	-2
Social Workers	9	8	-1	-6.3%	+0	+0
Psychologists	13	13			+2	+2
Health & Social Care Professionals	116	112	-4	-3.2%	+1	+1
Management (VIII & above)	6	7	+1	+16.7%		
Administrative/ Supervisory (V to VII)	15	15				
Clerical (III & IV)	34	34			+2	+2
Management & Administrative	56	57	+1	+1.8%	+2	+2
Support	12	12			-2	-2
Maintenance/ Technical	2	2			+1	+1
General Support	14	14			-1	-1
Health Care Assistants	58	58	-0	-0.5%	+7	+7
Care, other	42	44	+2	+4.7%	+6	+6
Patient & Client Care	101	102	+2	+1.7%	+13	+13

Cheeverstown House

Dec 2020 (Dec 2019 figure: 396)	WTE Nov 2020	WTE Dec 2020	WTE change since Nov 20	% change since Nov 20	WTE change since Dec 19	WTE change since Dec 19
Overall	390	395	+5	+1.3%	-2	-2
Consultants	0	0				
Medical/ Dental, other	1	1				
Medical & Dental	1	1				
Nurse/ Midwife Manager	27	27			+1	+1
Nurse/ Midwife Specialist & AN/MP	2	2				
Staff Nurse/ Staff Midwife	103	106	+3	+2.9%	-1	-1
Nursing & Midwifery	131	134	+3	+2.3%	-0	-0
Therapy Professions	11	13	+2	+17.5%	-0	-0
Social Care	34	35	+1	+1.5%	-0	-0
Social Workers	5	4	-1	-11.1%	-2	-2
Psychologists	5	5			+1	+1
Pharmacy	0	0			-0	-0
H&SC, Other	2	2				
Health & Social Care Professionals	57	59	+2	+3.5%	-1	-1
Management (VIII & above)	3	3			+1	+1
Administrative/ Supervisory (V to VII)	15	15			+0	+0
Clerical (III & IV)	12	12			+1	+1
Management & Administrative	30	30			+2	+2
Support	27	27			-0	
Maintenance/ Technical	4	4				
General Support	30	30				
Health Care Assistants	129	129			-1	-1
Care, other	11	11			-1	-1
Patient & Client Care	139	139			-3	-3

Children's Sunshine Home

Dec 2020 (Dec 2019 figure: 58)	WTE Nov 2020	WTE Dec 2020	WTE change since Nov 20	% change since Nov 20	WTE change since Dec 19	WTE change since Dec 19
Overall	57	56	-1	-1.8%	-3	-3
Nurse/ Midwife Manager	8	8			+1	+1
Staff Nurse/ Staff Midwife	18	18			-3	-3
Nursing & Midwifery	26	26			-2	-2
Therapy Professions	1	1			-1	-1
Social Workers	1	1				
Health & Social Care Professionals	2	2			-1	-1
Management (VIII & above)	3	2	-1	-33.3%	-1	-1
Administrative/ Supervisory (V to VII)	4	4				
<i>General Administrative (III & IV)</i>	1	1			+1	
Clerical (III & IV)	1	1				
Management & Administrative	8	7	-1	-13.0%	-1	-1
Support	3	3				
General Support	3	3				
Health Care Assistants	13	13			-1	-1
Care, other	5	5			+1	+1
Patient & Client Care	18	18			+1	+1

Dec 2020 (Dec 2019 figure: 1,091)	WTE Nov 2020	WTE Dec 2020	WTE change since Nov 20	% change since Nov 20	WTE change since Dec 19	WTE change since Dec 19
Overall	1,146	1,147	+0	+0.0%	+56	+56
Nurse/ Midwife Manager	42	42			+1	+1
Nurse/ Midwife Specialist & AN/MP	11	11			+1	+1
Staff Nurse/ Staff Midwife	163	177	+14	+8.4%	+8	+8
Pre-registration Nurse/ Midwife Intern				-100.0%	-8	-6
Pre-registration Nurse Intern (COVID-19)	17	8	-9	-55.6%	+8	+8
Nursing/ Midwifery Student	17	8	-9	-55.6%	+2	+2
Nursing/ Midwifery other				-100.0%	-1	-1
Nursing & Midwifery	233	238	+4	+1.8%	+11	+11
Therapy Professions	37	37			-1	-1
Social Care	43	43			+11	+11
Social Workers	9	9				
Psychologists	11	11			+1	+1
H&SC, Other	3	3				
Health & Social Care Professionals	102	102			+12	+12
Management (VIII & above)	7	7			+1	+1
Administrative/ Supervisory (V to VII)	23	23			+4	+4
Clerical (III & IV)	28	26	-2	-7.7%	+2	+2
Management & Administrative	58	55	-2	-3.8%	+7	+7
Support	83	78	-5	-5.9%	+1	+1
Maintenance/ Technical	7	7			+1	+1
General Support	90	85	-5	-5.5%	+2	+2
Health Care Assistants	585	587	+1	+0.2%	+23	+23
Care, other	79	81	+2	+2.5%	+1	+1
Patient & Client Care	664	667	+3	+0.5%	+24	+24

Daughters of Charity, Dublin

Dec 2020 (Dec 2019 figure: 1,034)	WTE Nov 2020	WTE Dec 2020	WTE change since Nov 20	% change since Nov 20	WTE change since Dec 19	WTE change since Dec 19
Overall	1,064	1,063	-1	-0.1%	+29	+29
Consultants	2	2			+1	+1
Medical/ Dental, other	2	2				
Medical & Dental	4	4			+1	+1
Nurse/ Midwife Manager	61	62	+1	+1.6%	+0	+0
Nurse/ Midwife Specialist & AN/MP	10	10			+2	+2
Staff Nurse/ Staff Midwife	190	188	-2	-1.1%	+2	+2
Pre-registration Nurse/ Midwife Intern				-100.0%	-8	-8
Pre-registration Nurse Intern (COVID-19)		10	+10	-100.0%	+10	+10
Nursing/ Midwifery Student		10	+10	-100.0%	+2	+2
Nursing/ Midwifery other	4	4				
Nursing & Midwifery	266	274	+8	+3.2%	+7	+7
Therapy Professions	32	32			-1	-1
Social Care	178	173	-5	-2.9%	+10	+10
Social Workers	13	13			+3	+3
Psychologists	11	11			+4	+4
Pharmacy	2	2				
H&SC, Other	5	5			+1	+1
Health & Social Care Professionals	241	235	-5	-2.1%	+16	+16
Management (VIII & above)	9	9			+3	+3
Administrative/ Supervisory (V to VII)	27	27	+0	+0.0%	+2	+2
Clerical (III & IV)	31	32	+1	+1.6%	-1	-1
Management & Administrative	67	68	+1	+0.7%	+4	+4
Support	77	76	-1	-1.2%	-2	-2
Maintenance/ Technical	8	8				
General Support	85	84	-1	-1.1%	-2	-2
Health Care Assistants	371	366	-4	-1.1%	+5	+5
Care, other	31	31	+1	+2.4%	-0	-0
Patient & Client Care	401	398	-3	-0.9%	+5	+5

Dec 2020 (Dec 2019 figure: 543)	WTE Nov 2020	WTE Dec 2020	WTE change since Nov 20	% change since Nov 20	WTE change since Dec 19	WTE change since Dec 19
Overall	548	549	+1	+0.2%	+6	+6
Medical/ Dental, other	1	1				
Medical & Dental	1	1				
Nurse/ Midwife Manager	32	32			-3	-3
Nurse/ Midwife Specialist & AN/MP	7	6	-1	-10.8%	-1	-1
Staff Nurse/ Staff Midwife	153	152	-0	-0.3%	+9	+9
<i>Pre-registration Nurse/ Midwife Intern</i>				-100.0%	-7	-12
<i>Pre-registration Nurse Intern (COVID-19)</i>	1	1	-1	-50.0%	+1	+1
Nursing/ Midwifery Student	1	1	-1	-50.0%	-11	-11
Nursing/ Midwifery other	3	3				
Nursing & Midwifery	196	194	-2	-0.9%	-7	-7
Therapy Professions	16	16			+1	+1
Social Care	63	67	+4	+6.0%	+14	+14
Social Workers	5	5	-0	-7.4%	-0	-0
Psychologists	7	7			+4	+4
H&SC, Other	6	6				
Health & Social Care Professionals	97	101	+3	+3.5%	+18	+18
Management (VIII & above)	2	2				
Administrative/ Supervisory (V to VII)	11	11			+1	+1
Clerical (III & IV)	14	14			-1	-1
Management & Administrative	27	27				
Support	43	43			+2	+2
Maintenance/ Technical	4	4				
General Support	47	47			+2	+2
Health Care Assistants	157	156	-0	-0.3%	-9	-9
Care, other	23	23			+2	+2
Patient & Client Care	180	179	-0	-0.3%	-7	-7

Daughters of Charity, Roscrea

Dec 2020 (Dec 2019 figure: 290)	WTE Nov 2020	WTE Dec 2020	WTE change since Nov 20	% change since Nov 20	WTE change since Dec 19	WTE change since Dec 19
Overall	290	289	-1	-0.3%	-1	-1
Nurse/ Midwife Manager	15	15			-1	-1
Staff Nurse/ Staff Midwife	19	19			+0	+0
Nursing/ Midwifery other	1	1				
Nursing & Midwifery	34	34			-1	-1
Therapy Professions	2	2			+0	+0
Social Care	25	25	-0	-0.0%	+6	+6
Social Workers	1	1				
Psychologists	1	1				
Health & Social Care Professionals	29	29	-0	-0.0%	+7	+7
Management (VIII & above)	1	1				
Administrative/ Supervisory (V to VII)	8	8			+1	+1
Clerical (III & IV)	6	6			-1	-1
Management & Administrative	15	15			+0	+0
Support	4	4				
Maintenance/ Technical	5	5			-1	-1
General Support	9	9			-1	-1
Health Care Assistants	201	200	-1	-0.4%	-3	-3
Care, other	2	2			-4	-4
Patient & Client Care	202	202	-1	-0.4%	-6	-6

Kare, Newbridge, Co Kildare

Dec 2020 (Dec 2019 figure: 360)	WTE Nov 2020	WTE Dec 2020	WTE change since Nov 20	% change since Nov 20	WTE change since Dec 19	WTE change since Dec 19
Overall	372	377	+5	+1.2%	+17	+17
Nurse/ Midwife Manager	7	7			-5	-5
Staff Nurse/ Staff Midwife	24	25	+1	+3.6%	+3	+3
Nursing & Midwifery	32	33	+1	+2.7%	-2	-2
Therapy Professions	13	13	-0	-0.5%	-2	-2
Social Care	65	68	+3	+4.6%	+7	+7
Social Workers	4	4				
Psychologists	7	7	+0	+2.4%	+3	+3
Health & Social Care Professionals	89	92	+3	+3.5%	+8	+8
Management (VIII & above)	6	6				
Administrative/ Supervisory (V to VII)	13	13	+0	+1.1%	+1	+1
Clerical (III & IV)	14	14	+1	+5.6%	+3	+3
Management & Administrative	33	34	+1	+2.8%	+4	+4
Support	1	1			-0	-0
General Support	1	1			-0	-0
Health Care Assistants	107	106	-1	-1.0%	+5	+5
Care, other	111	112	+1	+0.7%	+3	+3
Patient & Client Care	218	218	-0	-0.1%	+8	+8

Dec 2020 (Dec 2019 figure: 302)	WTE Nov 2020	WTE Dec 2020	WTE change since Nov 20	% change since Nov 20	WTE change since Dec 19	WTE change since Dec 19
Overall	313	320	+7	+2.4%	+19	+19
Nurse/ Midwife Manager	16	17	+1	+6.2%	+1	+1
Staff Nurse/ Staff Midwife	30	28	-1	-4.6%	+2	+2
<i>Pre-registration Nurse Intern (COVID-19)</i>	1		-1	-100.0%		
Nursing/ Midwifery Student	1		-1	-100.0%		
Nursing & Midwifery	46	45	-1	-2.7%	+3	+3
Social Care	102	105	+3	+2.8%	+10	+10
Social Workers	3	3	+0	+3.8%	-0	-0
Psychologists	1	1				
H&SC, Other	1	1				
Health & Social Care Professionals	107	110	+3	+2.8%	+10	+10
Management (VIII & above)	3	3	+1	+20.0%	+2	+2
Administrative/ Supervisory (V to VII)	5	5			+0	+0
Clerical (III & IV)	11	11			+0	+0
Management & Administrative	19	19	+1	+2.6%	+3	+3
Support	1	1	+0	+0.8%	+0	+0
Maintenance/ Technical	2	2				
General Support	3	3	+0	+0.3%	+0	+0
Health Care Assistants	109	114	+6	+5.2%	+5	+5
Care, other	28	28	-0	-1.4%	-2	-2
Patient & Client Care	137	142	+5	+3.8%	+3	+3

Dec 2020 (Dec 2019 figure: 270)	WTE Nov 2020	WTE Dec 2020	WTE change since Nov 20	% change since Nov 20	WTE change since Dec 19	WTE change since Dec 19
Overall	281	284	+3	+0.9%	+14	+14
Nurse/ Midwife Manager	10	9	-0	-3.7%	-0	-0
Staff Nurse/ Staff Midwife	5	5	-0	-3.2%	-1	-1
Nursing & Midwifery	14	14	-1	-3.5%	-1	-1
Therapy Professions	3	3				
Social Care	100	100	+0	+0.0%	+6	+6
Social Workers	4	4			+1	+1
Psychologists	2	2	+0	+2.1%	-0	-0
H&SC, Other	3	2	-1	-30.7%	-1	-1
Health & Social Care Professionals	111	111	-1	-0.7%	+6	+6
Senior Management (VIII & GM)		1	+1	-100.0%	+1	+1
Management (VIII & above)		1	+1	-100.0%	+1	+1
Administrative/ Supervisory (V to VII)	4	4	-1	-11.7%	-0	-0
Clerical (III & IV)	10	10			-0	-0
Management & Administrative	14	14			+0	+0
Support	1	1				
Maintenance/ Technical	3	3				
General Support	4	4				
Health Care Assistants	121	126	+5	+4.1%	+11	+11
Care, other	17	16	-1	-6.1%	-2	-2
Patient & Client Care	137	141	+4	+2.9%	+9	+9

Dec 2020 (Dec 2019 figure: 334)	WTE Nov 2020	WTE Dec 2020	WTE change since Nov 20	% change since Nov 20	WTE change since Dec 19	WTE change since Dec 19
Overall	342	342	+0	+0.1%	+8	+8
Nurse/ Midwife Manager	13	14	+1	+5.7%	-4	-4
Nurse/ Midwife Specialist & AN/MP	2	2	+0	+2.6%	+0	+0
Staff Nurse/ Staff Midwife	23	22	-1	-4.3%	-2	-2
Nursing/ Midwifery other	6	7	+1	+16.9%	+1	+1
Nursing & Midwifery	43	44	+1	+1.6%	-4	-4
Therapy Professions	9	8	-1	-7.9%	-0	-0
Social Care	94	94	+0	+0.2%	+5	+5
Social Workers	3	3	+0	+2.0%	+0	+0
Psychologists	2	2	+0	+0.6%	+0	+0
H&SC, Other	3	3				
Health & Social Care Professionals	110	110	-0	-0.4%	+5	+5
Management (VIII & above)	5	4	-1	-11.1%	+1	+1
Administrative/ Supervisory (V to VII)	13	13	+0	+0.4%	-1	-1
Clerical (III & IV)	13	13	+0	+0.6%	-1	-1
Management & Administrative	30	29	-0	-1.2%	-1	-1
Support	14	14	-0	-1.1%	-2	-2
Maintenance/ Technical	4	4			-1	-1
General Support	18	18	-0	-0.8%	-3	-3
Health Care Assistants	132	133	+1	+0.6%	+10	+10
Care, other	9	9	-0	-1.4%	+1	+1
Patient & Client Care	141	141	+1	+0.5%	+11	+11

Peamount Hospital (Newcastle)

Dec 2020 (Dec 2019 figure: 486)	WTE Nov 2020	WTE Dec 2020	WTE change since Nov 20	% change since Nov 20	WTE change since Dec 19	WTE change since Dec 19
Overall	477	483	+6	+1.2%	-4	-4
Registrars	2	2	+0	+1.5%		
SHO/ Interns	7	7	+0	+2.0%	+0	+0
Medical & Dental	9	9	+0	+1.9%	+0	+0
Nurse/ Midwife Manager	27	28	+1	+1.9%	+1	+1
Nurse/ Midwife Specialist & AN/MP	2	2				
Staff Nurse/ Staff Midwife	77	75	-1	-1.7%	-6	-6
<i>Nursing Education/Clinical</i>	1	1			+1	+1
Nursing/ Midwifery other	1	1			+1	+1
Nursing & Midwifery	107	106	-1	-0.7%	-4	-4
Therapy Professions	27	29	+2	+5.9%	-1	-1
Health Science/ Diagnostics	3	3				
Social Care	4	4	+0	+8.7%	+3	+3
Social Workers	5	5				
Pharmacy	4	4	+0	+3.4%	-1	-1
Health & Social Care Professionals	42	44	+2	+4.8%	+1	+1
Management (VIII & above)	4	4				
Administrative/ Supervisory (V to VII)	17	17	+0	+1.0%	+3	+3
Clerical (III & IV)	19	19	+0	+1.5%	-0	-0
Management & Administrative	40	40	+0	+1.1%	+2	+2
Support	44	44	+1	+1.2%	-3	-3
Maintenance/ Technical	8	9	+1	+12.5%	+2	+2
General Support	52	53	+2	+2.9%	-1	-1
Health Care Assistants	224	226	+2	+1.1%	-2	-2
Care, other	3	3			-0	-0
Patient & Client Care	227	230	+2	+1.1%	-2	-2

Stewart's Hospital, (Palmerstown)

Dec 2020 (Dec 2019 figure: 852)	WTE Nov 2020	WTE Dec 2020	WTE change since Nov 20	% change since Nov 20	WTE change since Dec 19	WTE change since Dec 19
Overall	913	914	+1	+0.1%	+62	+62
Consultants	0	0				
Registrars				-100.0%		
Medical & Dental	0	0				
Nurse/ Midwife Manager	30	32	+2	+6.7%	-4	-4
Staff Nurse/ Staff Midwife	83	81	-2	-2.4%	+8	+8
Nursing/ Midwifery other	1	1				
Nursing & Midwifery	113	113			+4	+4
Therapy Professions	18	19	+1	+5.5%	+3	+3
Social Care	13	13			+3	+3
Social Workers	6	6			+1	+1
Psychologists	4	4			-1	-1
Health & Social Care Professionals	41	42	+1	+2.4%	+6	+6
Management (VIII & above)	16	16	-0	-1.1%	+5	+5
Administrative/ Supervisory (V to VII)	16	17	+1	+6.4%	+3	+3
Clerical (III & IV)	24	24			+1	+1
Management & Administrative	56	57	+1	+1.5%	+9	+9
Support	55	54	-1	-1.2%	-3	-3
Maintenance/ Technical	6	6			+1	+1
General Support	61	60	-1	-1.1%	-2	-2
Health Care Assistants	521	520	-2	-0.3%	+39	+39
Care, other	120	122	+2	+1.3%	+6	+6
Patient & Client Care	642	642	-0	-0.0%	+45	+45

Dec 2020 (Dec 2019 figure: 647)	WTE Nov 2020	WTE Dec 2020	WTE change since Nov 20	% change since Nov 20	WTE change since Dec 19	WTE change since Dec 19
Overall	647	648	+1	+0.2%	+2	+2
Registrars	1	1				
Medical & Dental	1	1				
Nurse/ Midwife Manager	46	47	+1	+1.5%	+3	+3
Nurse/ Midwife Specialist & AN/MP	4	3	-1	-20.6%	-1	-1
Staff Nurse/ Staff Midwife	153	152	-1	-0.6%	-0	-0
<i>Pre-registration Nurse/ Midwife Intern</i>				-100.0%	-1	
<i>Pre-registration Nurse Intern (COVID-19)</i>	4	4			+4	+4
Nursing/ Midwifery Student	4	4			+4	+4
Nursing & Midwifery	207	206	-1	-0.5%	+6	+6
Therapy Professions	3	3				
Social Care	76	76	-1	-0.9%	-3	-3
Social Workers	2	2			-0	-0
Psychologists	1	1				
Health & Social Care Professionals	82	81	-1	-0.8%	-3	-3
Management (VIII & above)	1	1			-0	-0
Administrative/ Supervisory (V to VII)	6	6			-0	-0
Clerical (III & IV)	12	11	-0	-2.5%	+0	+0
Management & Administrative	18	18	-0	-1.6%	+0	+0
Support	21	19	-2	-9.2%	-4	-4
Maintenance/ Technical	3	3	-0	-0.0%	-0	-0
General Support	24	22	-2	-8.1%	-4	-4
Health Care Assistants	281	287	+6	+2.1%	+6	+6
Care, other	33	33	-1	-1.7%	-4	-4
Patient & Client Care	314	320	+5	+1.7%	+2	+2

St. John of God (IDS)

Dec 2020 (Dec 2019 figure: 456)	WTE Nov 2020	WTE Dec 2020	WTE change since Nov 20	% change since Nov 20	WTE change since Dec 19	WTE change since Dec 19
Overall	467	468	+1	+0.2%	+11	+11
Medical & Dental	1	1				
Nurse/ Midwife Manager	8	8			+0	+0
Staff Nurse/ Staff Midwife	48	49	+1	+1.3%	+3	+3
Nursing & Midwifery	56	57	+1	+1.1%	+3	+3
Therapy Professions	12	13	+1	+7.4%	+1	+1
Social Care	156	159	+3	+1.7%	+13	+13
Social Workers	3	3			-1	-1
Psychologists	6	6	+0	+3.1%	+1	+1
Health & Social Care Professionals	178	181	+4	+2.1%	+14	+14
Management (VIII & above)	15	14	-0	-3.3%	-0	-0
Administrative/ Supervisory (V to VII)	27	27	+0	+0.4%	-1	-1
Clerical (III & IV)	19	19	-0	-1.8%	-1	-1
Management & Administrative	60	60	-1	-1.2%	-2	-2
Support	12	12	-0	-0.1%		
Maintenance/ Technical	5	5			+0	+0
General Support	17	17	-0	-0.1%	+0	+0
Health Care Assistants	17	18	+1	+5.0%	-1	-1
Care, other	137	134	-4	-2.6%	-3	-3
Patient & Client Care	154	151	-3	-1.7%	-4	-4

St. John of God, Kerry

Dec 2020 (Dec 2019 figure: 315)	WTE Nov 2020	WTE Dec 2020	WTE change since Nov 20	% change since Nov 20	WTE change since Dec 19	WTE change since Dec 19
Overall	323	320	-3	-1.0%	+5	+5
Nurse/ Midwife Manager	15	15	-0	-1.9%	-1	-1
Staff Nurse/ Staff Midwife	49	47	-1	-2.7%	-2	-2
Nursing & Midwifery	64	62	-2	-2.5%	-2	-2
Therapy Professions	4	4	+0	+1.3%	+0	+0
Social Care	47	46	-0	-0.5%	+1	+1
Social Workers	1	1				
Psychologists	1	1	+0	+60.0%	-1	-1
Health & Social Care Professionals	52	52	+0	+0.2%	+1	+1
Management (VIII & above)	1	1				
Administrative/ Supervisory (V to VII)	7	7			-0	-0
Clerical (III & IV)	9	9	-0	-1.0%	-1	-1
Management & Administrative	17	17	-0	-0.5%	-1	-1
General Support	31	30	-1	-4.0%	-0	-0
Health Care Assistants	115	113	-1	-1.2%	+8	+8
Care, other	45	46	+1	+2.3%	-0	-0
Patient & Client Care	160	159	-0	-0.2%	+8	+8

St. John of God Liffey Services

Dec 2020 (Dec 2019 figure: 787)	WTE Nov 2020	WTE Dec 2020	WTE change since Nov 20	% change since Nov 20	WTE change since Dec 19	WTE change since Dec 19
Overall	794	801	+6	+0.8%	+13	+13
Registrars	1	1				
Medical & Dental	1	1				
Nurse/ Midwife Manager	22	22	-1	-3.2%	+2	+2
Nurse/ Midwife Specialist & AN/MP	1	1				
Staff Nurse/ Staff Midwife	91	91	-0	-0.0%	+1	+1
Nursing & Midwifery	114	113	-1	-0.6%	+3	+3
Therapy Professions	15	13	-1	-8.7%	-1	-1
Social Care	267	269	+2	+0.7%	+17	+17
Social Workers	6	6	+0	+1.2%	-1	-1
Psychologists	6	6			+0	+0
Health & Social Care Professionals	294	295	+1	+0.3%	+15	+15
Management (VIII & above)	5	5	+0	+0.8%	-1	-1
Administrative/ Supervisory (V to VII)	10	11	+1	+7.7%	+0	+0
Clerical (III & IV)	18	18	-0	-1.2%	-0	-0
Management & Administrative	34	34	+1	+1.9%	-1	-1
Support	30	29	-1	-4.1%	-6	-6
Maintenance/ Technical	14	14	+0	+0.4%	+2	+2
General Support	44	43	-1	-2.7%	-4	-4
Health Care Assistants	160	165	+6	+3.6%	-7	-7
Care, other	148	149	+1	+0.8%	+7	+7
Patient & Client Care	307	314	+7	+2.3%	+1	+1

Dec 2020 (Dec 2019 figure: 1,431)	WTE Nov 2020	WTE Dec 2020	WTE change since Nov 20	% change since Nov 20	WTE change since Dec 19	WTE change since Dec 19
Overall	1,449	1,453	+4	+0.3%	+23	+23
Consultants	6	6			-2	-2
Registrars	1	1			-3	-3
Medical/ Dental, other	4	4				
Medical & Dental	11	11			-5	-5
Nurse/ Midwife Manager	89	88	-2	-1.8%	+4	+4
Staff Nurse/ Staff Midwife	166	165	-1	-0.4%	+3	+3
Nursing & Midwifery	255	253	-2	-0.9%	+7	+7
Therapy Professions	47	46	-2	-3.3%	-6	-6
Social Care	564	565	+1	+0.2%	+40	+40
Social Workers	21	22	+1	+5.4%	+2	+2
Psychologists	21	23	+2	+11.0%	+5	+5
H&SC, Other	9	9			-1	-1
Health & Social Care Professionals	661	665	+3	+0.5%	+40	+40
Management (VIII & above)	20	20	+1	+4.2%	-1	-1
Administrative/ Supervisory (V to VII)	45	46	+1	+2.0%	+3	+3
Clerical (III & IV)	54	53	-0	-0.8%	-0	-0
Management & Administrative	118	120	+1	+1.1%	+2	+2
Support	48	48	-0	-0.3%	-49	-49
Maintenance/ Technical	12	12			-0	-0
General Support	60	60	-0	-0.2%	-49	-49
Health Care Assistants	319	321	+2	+0.6%	+28	+28
Care, other	24	24	+0	+0.3%	-0	-0
Patient & Client Care	343	345	+2	+0.6%	+28	+28

St. Patrick's, Kilkenny

Dec 2020 (Dec 2019 figure: 279)	WTE Nov 2020	WTE Dec 2020	WTE change since Nov 20	% change since Nov 20	WTE change since Dec 19	WTE change since Dec 19
Overall	288	287	-1	-0.3%	+8	+8
Nurse/ Midwife Manager	13	12	-1	-7.8%	+2	+2
Staff Nurse/ Staff Midwife	27	27	-1	-2.2%	+1	+1
Nursing & Midwifery	40	39	-2	-4.0%	+3	+3
Social Care	29	28	-1	-2.1%	-6	-6
Social Workers	1	1			-0	-0
H&SC, Other	2	2	+0	+16.4%	-1	-1
Health & Social Care Professionals	32	32	-0	-1.2%	-8	-8
Executive Management	1	1			+1	+1
Management (VIII & above)	1	1			+1	+1
Administrative/ Supervisory (V to VII)	6	6	+0	+1.3%	-1	-1
Clerical (III & IV)	12	12	-1	-4.0%	-2	-2
Management & Administrative	20	19	-0	-2.1%	-2	-2
Support	2	1	-1	-44.2%	-5	-5
Maintenance/ Technical	3	3				
General Support	5	4	-1	-20.0%	-5	-5
Patient & Client Care	190	193	+3	+1.4%	+20	+20

Sunbeam House Services

Dec 2020 (Dec 2019 figure: 449)	WTE Nov 2020	WTE Dec 2020	WTE change since Nov 20	% change since Nov 20	WTE change since Dec 19	WTE change since Dec 19
Overall	464	450	-14	-3.1%	+0	+0
Nurse/ Midwife Manager	3	4	+1	+33.3%		
Staff Nurse/ Staff Midwife	36	32	-4	-10.2%	-5	-5
Nursing & Midwifery	39	36	-3	-6.9%	-5	-5
Therapy Professions	1	2	+1	+69.4%	+1	+1
Social Care	200	195	-5	-2.5%	+13	+13
Social Workers	2	2				
Psychologists	1		-1	-100.0%	-1	-1
H&SC, Other				-100.0%	-1	-1
Health & Social Care Professionals	204	199	-5	-2.4%	+13	+13
Management (VIII & above)	9	9				
Administrative/ Supervisory (V to VII)	8	9	+1	+8.1%		
Clerical (III & IV)	26	25	-1	-3.8%	+1	+1
Management & Administrative	43	42	-0	-0.8%	+1	+1
Support	9	8	-1	-11.4%	+3	+3
Maintenance/ Technical	1		-1	-100.0%	-2	-2
General Support	10	8	-2	-20.3%	+1	+1
Health Care Assistants	69	65	-3	-5.0%	-6	-6
Care, other	100	99	-1	-1.1%	-4	-4
Patient & Client Care	169	164	-4	-2.7%	-10	-10

Bros. of Charity, West Region

Dec 2020 (Dec 2019 figure: 1,288)	WTE Nov 2020	WTE Dec 2020	WTE change since Nov 20	% change since Nov 20	WTE change since Dec 19	WTE change since Dec 19
Overall	1,289	1,298	+8	+0.6%	+9	+9
Consultants	2	2				
Registrars	2	2				
Medical & Dental	4	4				
Nurse/ Midwife Manager	67	68	+1	+1.4%	+1	+1
Nurse/ Midwife Specialist & AN/MP	5	5			-0	-0
Staff Nurse/ Staff Midwife	119	124	+5	+4.2%	+4	+4
<i>Pre-registration Nurse Intern (COVID-19)</i>	1	1	+0	+21.8%	+1	+1
Nursing/ Midwifery Student	1	1	+0	+21.8%	+1	+1
Nursing & Midwifery	191	197	+6	+3.2%	+5	+5
Therapy Professions	30	29	-1	-3.1%	-5	-5
Social Care	209	211	+2	+1.0%	+16	+16
Social Workers	25	26	+1	+2.1%	+0	+0
Psychologists	13	12	-1	-4.5%	-2	-2
H&SC, Other	16	12	-4	-26.3%	-4	-4
Health & Social Care Professionals	293	290	-3	-1.1%	+5	+5
Management (VIII & above)	13	13			-0	-0
Administrative/ Supervisory (V to VII)	37	36	-0	-1.0%	+2	+2
Clerical (III & IV)	37	38	+0	+0.9%	+0	+0
Management & Administrative	87	87	-0	-0.0%	+2	+2
Support	43	43	+0	+0.3%	-2	-2
Maintenance/ Technical	5	5			+0	+0
General Support	48	48	+0	+0.3%	-2	-2
Health Care Assistants	543	548	+5	+0.9%	+2	+2
Care, other	123	123	+0	+0.2%	-4	-4
Patient & Client Care	666	671	+5	+0.8%	-1	-1

Social Care Disability Services Employment by Grade Group: Dec 2020

Dec 2020 (Dec 2019 figure: 18,303)	WTE Nov 2020	WTE Dec 2020	WTE change since Nov 20	% change since Nov 20	WTE change since Dec 19	WTE change since Dec 19
Overall	18,873	18,944	+71	+0.4%	+642	+642
Consultant Paediatrics	3	3				
Consultant Psychiatry	21	21	+1	+4.0%	+1	+1
Consultants	24	24	+1	+3.5%	+1	+1
Registrar	3	3	+0	+1.0%	-4	-4
Senior Registrar	3	3			+1	+1
Specialist Registrar	2	2			-2	-2
Registrars	8	8	+0	+0.4%	-5	-5
SHO/ Interns	9	9	+0	+1.6%	+2	+2
Medical/ Dental, other	14	14	-0	-0.7%	-0	-0
Medical & Dental	55	56	+1	+1.6%	-3	-3
Clinical Nurse/ Midwife Manager	813	814	+1	+0.1%	+4	+4
Director Nursing/Midwifery, Assistant	42	46	+4	+8.4%	+5	+5
Director of Nursing/Midwifery	40	37	-3	-7.8%	-5	-5
Nurse/ Midwife Manager	896	897	+2	+0.2%	+3	+3
Advanced Nurse/ Midwife Practitioner	8	8			+6	+6
Clinical Nurse/ Midwife Specialist	57	56	-1	-2.3%	-4	-4
Nurse/ Midwife Specialist & AN/MP	65	64	-1	-2.0%	+2	+2
Staff Nurse [Intellectual Disability]	1,659	1,788	+129	+7.8%	+191	+191
Staff Nurse [Psychiatric]	55	53	-2	-4.0%	-31	-31
Staff Nurses [General/ Children's]	862	752	-110	-12.8%	-139	-139
Staff Nurse/ Staff Midwife	2,576	2,593	+17	+0.6%	+21	+21
Public Health Nurse	7	7	+0	+4.2%	+1	+1
Pre-registration Nurse/ Midwife Intern	4	3	-1	-30.4%	-26	-26
Pre-registration Nurse Intern (COVID-19)	41	32	-9	-22.2%	+32	+32
Post-registration Nurse/ Midwife Student	2		-2	-100.0%		
Nursing/ Midwifery awaiting registration	13	13			-1	-1
Nursing/ Midwifery Student	59	47	-12	-20.3%	+5	+5
Nursing Education/Clinical	23	23	-0	-0.9%	+2	+2
Other Nursing/ Midwifery	1	1				
Nursing/ Midwifery other	24	24	-0	-0.8%	+2	+2
Nursing & Midwifery	3,627	3,632	+5	+0.1%	+34	+34
Dietitians	17	16	-0	-2.7%	-2	-2
Occupational Therapists	276	279	+3	+1.1%	+14	+14
Physiotherapists	194	193	-1	-0.6%	+4	+4
Speech & Language Therapists	307	307	-0	-0.0%	+15	+15
Therapy Professions	794	795	+1	+0.2%	+31	+31
Clinical Engineering	14	13	-1	-7.2%	-0	-0
Clinical Measurement	2	2			+1	+1
Medical Laboratory	4	4				
Phlebotomists				-100.0%	-1	-1
Radiographers	1	1				
Health Science/ Diagnostics	21	20	-1	-4.8%	-0	-0
Social Care	2,781	2,789	+8	+0.3%	+194	+194
Social Workers	227	228	+2	+0.7%	+9	+9
Psychologists	233	229	-4	-1.6%	+25	+25
Pharmacy	6	6	+0	+2.0%	-1	-1
Counsellor Therapists	20	20	-1	-2.7%	+1	+1
Other Health & Social Care	49	45	-4	-8.3%	-5	-5

Dec 2020 (Dec 2019 figure: 18,303)	WTE Nov 2020	WTE Dec 2020	WTE change since Nov 20	% change since Nov 20	WTE change since Dec 19	WTE change since Dec 19
Overall	18,873	18,944	+71	+0.4%	+642	+642
Play Therapists/ Specialists	11	11	+0	+1.9%	-5	-5
H&SC, Other	80	76	-4	-5.5%	-9	-9
Health & Social Care Professionals	4,141	4,144	+2	+0.1%	+249	+249
Executive Management	36	36	+0	+0.1%	+5	+5
Senior Management (VIII & GM)	168	168	+0	+0.2%	+19	+19
Management (VIII & above)	204	204	+0	+0.2%	+24	+24
Middle Management (V-VII)	503	511	+8	+1.6%	+47	+47
Other Administrative	16	16			+1	+1
Administrative/ Supervisory (V to VII)	519	527	+8	+1.5%	+48	+48
Clerical (III & IV)	685	685	+0	+0.1%	+25	+25
Management & Administrative	1,407	1,416	+9	+0.6%	+97	+97
Catering	100	96	-4	-3.6%	-2	-2
Household Services	409	406	-3	-0.7%	-14	-14
Other Labs & Associated	1	1				
Other Support	139	136	-4	-2.6%	-52	-52
Portering	26	24	-2	-6.8%	-3	-3
Support	675	663	-12	-1.8%	-71	-71
Maintenance	121	121	+0	+0.4%	+5	+5
Technical Services	11	11			+3	+3
Maintenance/ Technical	132	132	+0	+0.3%	+8	+8
General Support	807	795	-12	-1.4%	-63	-63
HCA, Nurse's Aide, etc.	7,033	7,091	+59	+0.8%	+275	+275
Health & Social Care Assistants	9	11	+2	+18.1%	+1	+1
Health Care Assistants	7,042	7,102	+60	+0.9%	+276	+276
Home Help	98	94	-4	-4.3%	-15	-15
Care, other	1,696	1,706	+10	+0.6%	+66	+66
Patient & Client Care	8,836	8,902	+66	+0.7%	+327	+327

Employment by WTE, Headcount, Gender, Full-Time /Part-Time etc.: Dec 2020

Social Care Disability Services Staff Group	WTE	Headcount	WTE: no.	% Male	% female	Male WTE: no.	Female WTE: no.	% Total Perm	% Male Perm	% Female Perm	% Total Full Time	% Total Part Time	% Male FT	% Female FT
Overall	18,944	22,497	1.19	19.2%	80.8%	1.12	1.21	87.4%	86.6%	87.5%	57.1%	42.9%	69.3%	54.2%
Consultant Paediatrics	3	6	1.97	16.7%	83.3%	1.82	2.00	66.7%	66.7%	80.0%	33.3%	66.7%	100.0%	20.0%
Consultant Psychiatry	21	28	1.31	32.1%	67.9%	1.27	1.33	82.1%	82.1%	84.2%	60.7%	39.3%	77.8%	52.6%
Consultants	24	34	1.39	29.4%	70.6%	1.31	1.43	79.4%	70.0%	83.3%	55.9%	44.1%	80.0%	45.8%
Registrar	3	3	1.00	66.7%	33.3%	1.00	1.00	0.0%	0.0%	0.0%	100.0%	0.0%	100.0%	100.0%
Senior Registrar	3	3	1.00		100.0%		1.00	0.0%	0.0%	0.0%	100.0%	0.0%		100.0%
Specialist Registrar	2	2	1.00	50.0%	50.0%	1.00	1.00	0.0%	0.0%	0.0%	100.0%	0.0%	100.0%	100.0%
Registrars	8	8	1.00	37.5%	62.5%	1.00	1.00	0.0%	0.0%	0.0%	100.0%	0.0%	100.0%	100.0%
SHO/ Interns	9	9	1.00	22.2%	77.8%	1.00	1.00	0.0%	0.0%	0.0%	100.0%	0.0%	100.0%	100.0%
Medical/ Dental, other	14	22	1.54	45.5%	54.5%	1.28	1.84	90.9%	80.0%	100.0%	40.9%	59.1%	50.0%	33.3%
Medical & Dental	56	73	1.31	34.2%	65.8%	1.23	1.36	64.4%	60.0%	66.7%	61.6%	38.4%	72.0%	56.3%
Clinical Nurse/ Midwife Manager	814	872	1.07	12.8%	87.2%	1.01	1.08	93.3%	93.3%	93.8%	82.0%	18.0%	98.2%	79.6%
Director Nursing/Midwifery, Assistant	46	47	1.03	14.9%	85.1%	1.00	1.03	97.9%	97.9%	97.5%	93.6%	6.4%	100.0%	92.5%
Director of Nursing/Midwifery	37	38	1.03	7.9%	92.1%	1.00	1.03	97.4%	97.4%	97.1%	97.4%	2.6%	100.0%	97.1%
Nurse/ Midwife Manager	897	957	1.07	12.7%	87.3%	1.01	1.08	93.7%	91.0%	94.1%	83.2%	16.8%	98.4%	81.0%
Advanced Nurse/ Midwife Practitioner	8	8	1.00	37.5%	62.5%	1.00	1.00	100.0%	100.0%	100.0%	100.0%	0.0%	100.0%	100.0%
Clinical Nurse/ Midwife Specialist	56	66	1.18	4.5%	95.5%	1.01	1.19	98.5%	98.5%	98.4%	53.0%	47.0%	100.0%	50.8%
Nurse/ Midwife Specialist & AN/MP	64	74	1.16	8.1%	91.9%	1.01	1.17	98.6%	100.0%	98.5%	58.1%	41.9%	100.0%	54.4%
Staff Nurse [Intellectual Disability]	1,788	2,069	1.16	8.4%	91.6%	1.08	1.16	94.9%	94.9%	94.8%	64.0%	36.0%	85.5%	62.1%
Staff Nurse [Psychiatric]	53	69	1.31	17.4%	82.6%	1.44	1.29	81.2%	81.2%	87.7%	56.5%	43.5%	50.0%	57.9%
Staff Nurses [General/ Children's]	752	879	1.17	12.7%	87.3%	1.05	1.19	93.4%	93.4%	93.5%	63.7%	36.3%	84.8%	60.6%
Staff Nurse/ Staff Midwife	2,593	3,017	1.16	9.8%	90.2%	1.08	1.17	94.2%	93.3%	94.3%	63.8%	36.2%	83.8%	61.6%
Public Health Nurse	7	8	1.16		100.0%	#DIV/0	1.16	100.0%		100.0%	50.0%	50.0%	#DIV/0	50.0%
Nursing/ Midwifery Student	47	66	1.40	7.6%	92.4%	1.67	1.38	30.3%	0.0%	32.8%	66.7%	33.3%	100.0%	63.9%
Nursing Education/Clinical	23	26	1.14		100.0%		1.14	96.2%	96.2%	96.2%	76.9%	23.1%		76.9%
Other Nursing/ Midwifery	1	1	1.00	100.0%		1.00		100.0%	100.0%		100.0%	0.0%	100.0%	
Nursing/ Midwifery other	24	27	1.13	3.7%	96.3%	1.00	1.14	96.3%	100.0%	96.2%	77.8%	22.2%	100.0%	76.9%
Nursing & Midwifery	3,632	4,149	1.14	10.4%	89.6%	1.06	1.15	93.2%	91.6%	93.3%	68.3%	31.7%	88.4%	65.9%

Dietitians	16	21	1.28		100.0%		1.28	81.0%	81.0%	81.0%	52.4%	47.6%		52.4%
Occupational Therapists	279	319	1.15	6.3%	93.7%	1.13	1.15	91.2%	91.2%	91.6%	76.5%	23.5%	85.0%	75.9%
Physiotherapists	193	228	1.18	16.7%	83.3%	1.02	1.22	89.9%	89.9%	88.9%	65.8%	34.2%	94.7%	60.0%
Speech & Language Therapists	307	352	1.15	1.4%	98.6%	1.00	1.15	90.6%	90.6%	90.5%	75.3%	24.7%	100.0%	74.9%
Therapy Professions	795	920	1.16	6.8%	93.2%	1.05	1.17	90.4%	92.1%	90.3%	72.8%	27.2%	92.1%	71.4%
Clinical Engineering	13	13	1.00	92.3%	7.7%	1.00	1.00	92.3%	92.3%	100.0%	92.3%	7.7%	91.7%	100.0%
Clinical Measurement	2	2	1.00	100.0%		1.00		100.0%	100.0%		100.0%	0.0%	100.0%	
Medical Laboratory	4	4	1.00	75.0%	25.0%	1.00	1.00	100.0%	100.0%	100.0%	100.0%	0.0%	100.0%	100.0%
Radiographers	1	1	1.00		100.0%		1.00	100.0%	100.0%	100.0%	100.0%	0.0%		100.0%
Health Science/ Diagnostics	20	20	1.00	85.0%	15.0%	1.00	1.00	95.0%	94.1%	100.0%	95.0%	5.0%	94.1%	100.0%
Social Care	2,789	3,291	1.18	16.1%	83.9%	1.10	1.20	89.9%	90.2%	89.9%	49.0%	51.0%	63.9%	46.2%
Social Workers	228	269	1.18	16.7%	83.3%	1.06	1.21	92.6%	88.9%	93.3%	70.3%	29.7%	86.7%	67.0%
Psychologists	229	265	1.16	21.9%	78.1%	1.09	1.18	91.7%	91.4%	91.8%	73.6%	26.4%	82.8%	71.0%
Pharmacy	6	8	1.33	12.5%	87.5%	2.63	1.24	87.5%	100.0%	85.7%	62.5%	37.5%	0.0%	71.4%
Counsellor Therapists	20	25	1.27	8.0%	92.0%	1.00	1.30	100.0%	100.0%	100.0%	56.0%	44.0%	100.0%	52.2%
Other Health & Social Care	45	59	1.31	18.6%	81.4%	1.11	1.37	86.4%	86.4%	87.5%	49.2%	50.8%	72.7%	43.8%
Play Therapists/ Specialists	11	14	1.29	21.4%	78.6%	1.00	1.40	100.0%	100.0%	100.0%	50.0%	50.0%	100.0%	36.4%
H&SC, Other	76	98	1.29	16.3%	83.7%	1.07	1.35	91.8%	87.5%	92.7%	51.0%	49.0%	81.3%	45.1%
Health & Social Care	4,144	4,871	1.18	15.0%	85.0%	1.09	1.19	90.3%	90.4%	90.3%	56.3%	43.7%	70.2%	53.8%
Executive Management	36	36	1.00	38.9%	61.1%	1.00	1.00	91.7%	91.7%	95.5%	100.0%	0.0%	100.0%	100.0%
Senior Management (VIII & GM)	168	173	1.03	31.2%	68.8%	1.01	1.04	94.2%	94.2%	94.1%	95.4%	4.6%	100.0%	93.3%
Management (VIII & above)	204	209	1.02	32.5%	67.5%	1.01	1.03	93.8%	92.6%	94.3%	96.2%	3.8%	100.0%	94.3%
Middle Management (V-VII)	511	549	1.07	22.6%	77.4%	1.03	1.09	92.0%	92.0%	92.9%	81.4%	18.6%	93.5%	77.9%
Other Administrative	16	16	1.01	18.8%	81.3%	1.00	1.01	100.0%	100.0%	100.0%	93.8%	6.3%	100.0%	92.3%
Administrative/ Supervisory (V to VII)	527	565	1.07	22.5%	77.5%	1.03	1.09	92.2%	89.0%	93.2%	81.8%	18.2%	93.7%	78.3%
Clerical (III & IV)	685	834	1.22	9.5%	90.5%	1.11	1.23	86.9%	81.0%	87.5%	57.9%	42.1%	72.2%	56.4%
Management & Administrative	1,416	1,608	1.14	17.0%	83.0%	1.05	1.16	89.7%	87.6%	90.1%	71.3%	28.7%	89.1%	67.6%
Catering	96	117	1.22	27.4%	72.6%	1.10	1.27	98.3%	98.3%	98.8%	59.0%	41.0%	84.4%	49.4%
Household Services	406	587	1.45	16.2%	83.8%	1.46	1.44	87.4%	87.4%	90.2%	35.3%	64.7%	54.7%	31.5%
Other Labs & Associated	1	1	1.00		100.0%		1.00	100.0%	100.0%	100.0%	100.0%	0.0%		100.0%
Other Support	136	222	1.64	51.4%	48.6%	1.30	2.27	93.7%	93.7%	100.0%	27.5%	72.5%	46.5%	7.4%
Portering	24	33	1.35	97.0%	3.0%	1.36	1.25	84.8%	84.8%	100.0%	42.4%	57.6%	43.8%	0.0%
Support	663	960	1.45	28.4%	71.6%	1.33	1.50	90.1%	83.2%	92.9%	36.7%	63.3%	53.5%	30.0%
Maintenance	121	134	1.10	92.5%	7.5%	1.09	1.31	94.0%	94.0%	100.0%	76.9%	23.1%	80.6%	30.0%
Technical Services	11	11	0.99	72.7%	27.3%	0.99	1.00	90.9%	90.9%	100.0%	100.0%	0.0%	100.0%	100.0%

Maintenance/ Technical	132	145	1.09	91.0%	9.0%	1.08	1.22	93.8%	93.2%	100.0%	78.6%	21.4%	81.8%	46.2%
General Support	795	1,105	1.39	36.7%	63.3%	1.24	1.50	90.6%	86.4%	93.0%	42.2%	57.8%	62.7%	30.3%
HCA, Nurse's Aide, etc.	7,091	8,394	1.18	23.1%	76.9%	1.11	1.21	83.6%	83.6%	83.4%	52.2%	47.8%	63.6%	48.8%
Health & Social Care Assistants	11	14	1.27		100.0%		1.27	78.6%	78.6%	78.6%	42.9%	57.1%		42.9%
Health Care Assistants	7,102	8,408	1.18	23.0%	77.0%	1.11	1.21	83.6%	84.2%	83.4%	52.2%	47.8%	63.6%	48.8%
Home Help	94	265	2.83	7.9%	92.1%	4.59	2.74	28.7%	42.9%	27.5%	3.4%	96.6%	0.0%	3.7%
Care, other	1,706	2,018	1.18	25.0%	75.0%	1.14	1.20	88.9%	89.1%	88.9%	61.0%	39.0%	71.3%	57.5%
Patient & Client Care	8,902	10,691	1.20	23.0%	77.0%	1.13	1.22	83.2%	84.8%	82.7%	52.6%	47.4%	64.6%	49.0%

Employment by WTE, Headcount, Gender, Full-Time /Part-Time etc.: Dec 2020

Social Care Disability Services CHO	WTE	Headcount	WTE: no.	% Male	% female	Male WTE: no.	Female WTE: no.	% Total Perm	% Male Perm	% Female Perm	% Total Full Time	% Total Part Time	% Male FT	% Female FT
Overall	18,944	22,497	1.19	19.2%	80.8%	1.12	1.21	87.4%	86.6%	87.5%	57.1%	42.9%	69.3%	54.2%
CHO 1	1,547	1,727	1.12	21.2%	78.8%	1.06	1.13	90.0%	90.0%	90.3%	76.4%	23.6%	89.6%	72.9%
HSE	218	240	1.10	24.2%	75.8%	1.03	1.12	85.8%	85.8%	86.8%	75.0%	25.0%	93.1%	93.1%
Section 38	1,298	1,637	1.26	22.7%	77.3%	1.22	1.27	81.1%	81.1%	80.6%	38.2%	61.8%	42.7%	42.7%
CHO 2	1,516	1,877	1.24	22.9%	77.1%	1.19	1.25	81.7%	81.7%	81.4%	42.9%	57.1%	49.5%	40.9%
HSE	145	162	1.12	20.4%	79.6%	1.04	1.14	85.8%	85.8%	89.9%	74.1%	25.9%	90.9%	90.9%
Section 38	1,802	2,138	1.19	11.9%	88.1%	1.16	1.19	83.7%	83.7%	84.1%	38.5%	61.5%	39.2%	39.2%
CHO 3	1,947	2,300	1.18	12.5%	87.5%	1.15	1.19	83.9%	83.9%	84.5%	41.0%	59.0%	45.1%	40.4%
HSE	313	335	1.07	29.6%	70.4%	1.02	1.09	82.1%	82.1%	80.5%	87.2%	12.8%	97.0%	97.0%
Section 38	2,242	2,722	1.21	19.4%	80.6%	1.16	1.23	85.4%	85.4%	86.9%	63.3%	36.7%	68.0%	68.0%
CHO 4	2,556	3,057	1.20	20.5%	79.5%	1.13	1.21	85.1%	85.1%	86.3%	65.9%	34.1%	72.6%	64.2%
HSE	394	480	1.22	11.9%	88.1%	1.06	1.24	77.3%	77.3%	75.9%	66.9%	33.1%	93.0%	93.0%
Section 38	1,169	1,345	1.15	21.5%	78.5%	1.12	1.16	83.8%	83.8%	83.3%	47.6%	52.4%	61.2%	61.2%
CHO 5	1,563	1,825	1.17	19.0%	81.0%	1.11	1.18	82.1%	82.1%	81.2%	52.7%	47.3%	66.5%	49.4%
HSE	243	269	1.10	18.6%	81.4%	1.01	1.13	90.3%	90.3%	93.2%	80.7%	19.3%	98.0%	98.0%
Section 38	973	1,156	1.19	22.3%	77.7%	1.16	1.20	92.2%	92.2%	92.1%	62.8%	37.2%	73.6%	73.6%
CHO 6	1,217	1,425	1.17	21.6%	78.4%	1.13	1.18	91.9%	91.9%	92.3%	66.2%	33.8%	77.6%	63.0%
HSE	135	226	1.67	13.7%	86.3%	1.97	1.63	76.1%	76.1%	77.4%	49.1%	50.9%	41.9%	41.9%
Section 38	2,968	3,499	1.18	23.6%	76.4%	1.09	1.21	89.3%	89.3%	89.5%	66.8%	33.2%	81.0%	81.0%
CHO 7	3,103	3,725	1.20	23.0%	77.0%	1.10	1.23	88.5%	88.5%	88.6%	65.8%	34.2%	79.6%	61.6%
HSE	611	718	1.18	15.7%	84.3%	1.06	1.20	87.3%	87.3%	86.9%	67.5%	32.5%	85.8%	85.8%
Section 38	1,595	1,917	1.20	21.6%	78.4%	1.13	1.22	96.1%	96.1%	96.3%	40.0%	60.0%	48.7%	48.7%
CHO 8	2,205	2,635	1.19	20.0%	80.0%	1.12	1.22	93.7%	93.7%	93.6%	47.5%	52.5%	56.6%	45.2%
HSE	472	525	1.11	31.4%	68.6%	1.07	1.13	88.0%	88.0%	89.2%	85.5%	14.5%	92.7%	92.7%
Section 38	2,812	3,395	1.21	12.1%	87.9%	1.11	1.22	88.1%	88.1%	88.1%	50.5%	49.5%	65.8%	65.8%
CHO 9	3,285	3,920	1.19	14.7%	85.3%	1.10	1.21	88.1%	88.1%	88.2%	55.2%	44.8%	73.5%	52.0%
other Community Services	6	6	1.01	16.7%	83.3%	1.00	1.01	83.3%	83.3%	80.0%	83.3%	16.7%	100.0%	80.0%

Summary Staff Movement: December 2020

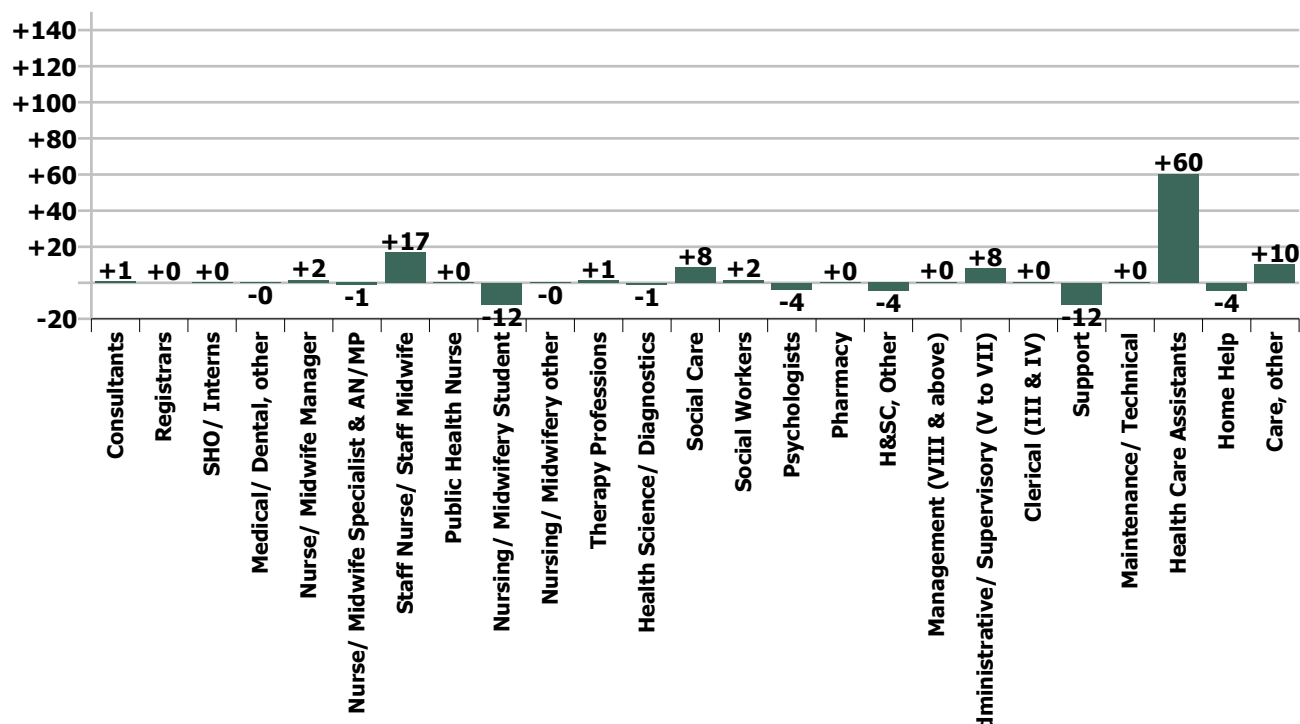
Month-on-month
Summary

WTE change since Nov 20	% change since Nov 20	overall	Consultants	Registrars	SHO/ Interns	Medical/ Dental, other	Medical & Dental	Nurse/ Midwife Manager	Nurse/ Midwife Specialist & AN/MP	Staff Nurse/ Staff Midwife	Public Health Nurse	Nursing/ Midwifery Student	Nursing/ Midwifery other	Nursing & Midwifery	Therapy Professions	Health Science/ Diagnostics	Social Care	Social Workers	Psychologists	Pharmacy	H&SC, Other	Health & Social Care Professionals	Management (VIII & above)	Administrative Supervisory (V to VII)	Clerical (III & IV)	Management & Administrative	Support	Maintenance/ Technical	General Support	Health Care Assistants	Home Help	Care, other	Patient & Client Care
Overall	+0.4%	+71	+0.8	+0.0	+0.1	-0.1	+0.9	+1.5	-1.3	+16.6	+0.3	-12.0	-0.2	+4.9	+1.4	-1.0	+8.5	+1.6	-3.8	+0.1	-4.4	+2.3	+0.4	+8.0	+0.5	+8.9	-12.1	+0.4	-11.6	+60.3	-4.3	+10.2	+66.1
CHO 1	-0.6%	-10				-0.1	-0.1	-3.2	+0.0	+0.7		-6.2	-1.0	-9.7	-0.2		+1.4	-0.0	-2.9		+0.3	-1.4	+0.7	-0.1	+1.2	+1.8	-0.3	+0.1	-0.2	+2.0	-0.5	-1.9	-0.3
CHO 2	+0.7%	+11					0.0	+0.7		+7.3		+0.1		+8.2	-0.9		+2.5	+0.5	-0.6		-4.2	-2.7	-1.1	+1.2	+0.3	+0.4	+0.1	+0.1	+4.7		+0.2	+4.9	
CHO 3	+1.0%	+19	+0.8				+0.8	+1.7	-0.8	+0.6		+0.1		+1.7	+1.5		+8.2	+1.7	+0.1			+11.5	+0.0	-1.3	-1.2	-2.4	-0.6	+1.3	+0.7	+5.5		+1.1	+6.6
CHO 4	+0.4%	+9					0.0	+0.5		+12.0		-9.5		+3.0	+0.7		-5.3	+0.4	-0.1		+0.2	-4.2	+1.0	-0.8	-0.4	-0.2	-4.9	-1.0	-5.9	+5.6		+10.8	+16.5
CHO 5	+1.4%	+22					0.0	-0.9	+0.2	+7.0	+0.3	-4.7		+1.8	+1.8		-0.7	-0.4	-0.2		+0.3	+0.8	+0.0	+0.4	-0.1	+0.4	-0.9		-0.9	+22.9	-3.9	+1.0	+20.0
CHO 6	-1.4%	-17					0.0	+1.0		-3.1				-2.1	+0.9		-1.9		-1.9		-0.1	-3.1	-1.6	+0.1	-0.8	-2.2	-1.0	-1.0	-2.0	-2.8		-4.6	-7.4
CHO 7	+0.9%	+26		+0.0	+0.1		+0.2	+2.8		+0.6				+3.3	+1.6		+5.8	-1.0	+1.3	+0.1		+7.9	-1.1	+4.8	+1.9	+5.6	-1.4	+1.1	-0.3	+6.0	-0.2	+3.7	+9.6
CHO 8	+0.5%	+12					0.0	+0.1	-0.7	-4.5	+0.0	-0.9	+1.0	-5.0	+0.2		+2.4	-0.1	-1.3		-0.9	+0.4	+0.6	+2.4	-0.5	+2.5	-2.1	-2.1	+18.8	+0.3	-3.0	+16.1	
CHO 9	-0.0%	-1					0.0	-1.1		-3.9		+8.9	-0.1	+3.8	-4.2	-1.0	-3.9	+0.4	+1.7			-6.9	+1.8	+1.2	+0.1	+3.1	-0.9		-0.9	-2.5		+2.8	+0.3
other Community Services																									0.0								
		+0.4%	+3.5%	+0.4%	+1.6%	-0.7%	+1.6%	+0.2%	-2.0%	+0.6%	+4.2%	-20.3%	-0.8%	+0.1%	+0.2%	-4.8%	+0.3%	+0.7%	-1.6%	+2.0%	-5.5%	+0.1%	+0.2%	+1.5%	+0.1%	+0.6%	-1.8%	+0.3%	-1.4%	+0.9%	-4.3%	+0.6%	+0.7%

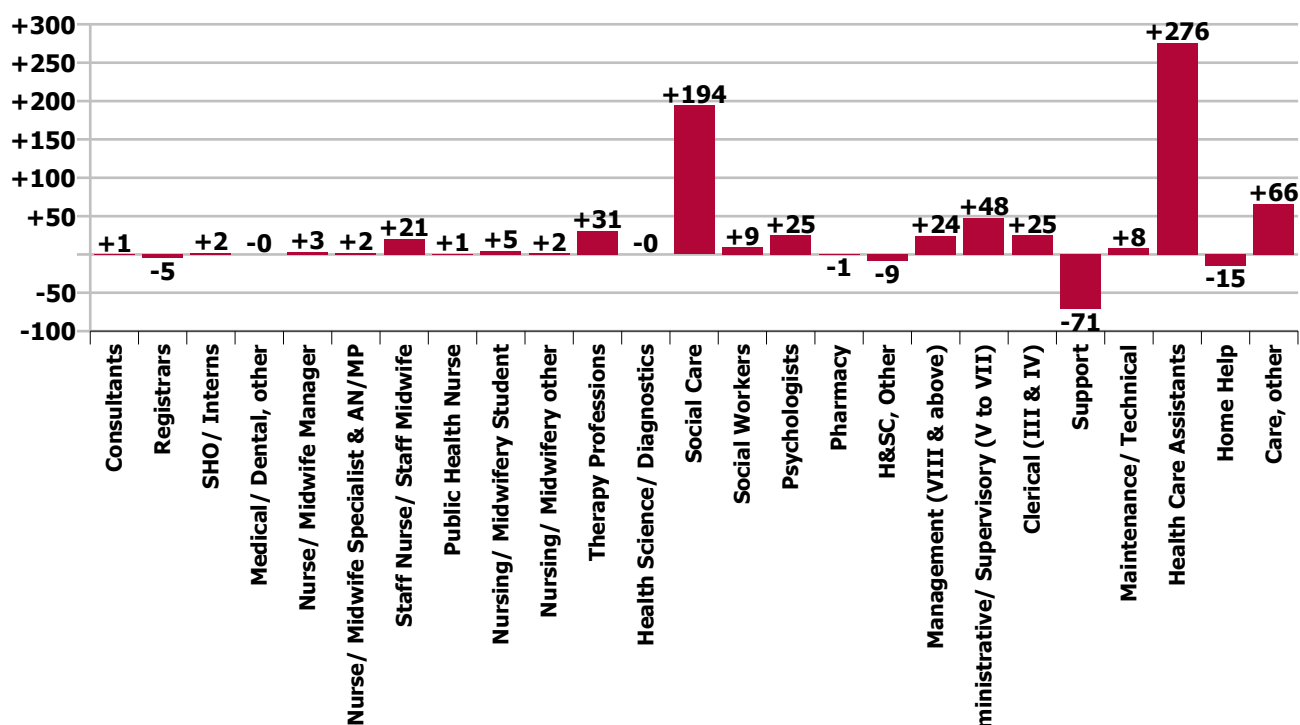
Year-on-year Summary

WTE change since Dec 19	% change since Dec 19	overall	Consultants	Registrars	SHO/ Interns	Medical/ Dental, other	Medical & Dental	Nurse/ Midwife Manager	Nurse/ Midwife Specialist & AN/MP	Staff Nurse/ Staff Midwife	Public Health Nurse	Nursing/ Midwifery Student	Nursing/ Midwifery other	Nursing & Midwifery	Therapy Professions	Health Science/ Diagnostics	Social Care	Social Workers	Psychologists	Pharmacy	H&SC, Other	Health & Social Care Professionals	Management (VIII & above)	Administrative/ Supervisory (V to VII)	Clerical (III & IV)	Management & Administrative	Support	Maintenance/ Technical	General Support	Health Care Assistants	Home Help	Care, other	Patient & Client Care
Overall	+3.5%	+642	+1	-5	+2	-0	-3	+3	+2	+21	+1	+5	+2	+34	+31	-0	+194	+9	+25	-1	-9	+249	+24	+48	+25	+97	-71	+8	-63	+276	-15	+66	+327
CHO 1	+3.2%	+48				-0	-0	+1	+2	+5		+3	-1	+10	+1		+4	+3	+3		-3	+8	+3	+7	+3	+12	-0		-0	+14	+1	+4	+18
CHO 2	+1.2%	+19						+0	-0	+4		+1		+5	-7		+22	-0	-2		-4	+8	-0	+4	+0	+4	-2	-0	-2	+2		+2	+3
CHO 3	+6.8%	+124	+1				+1	-1	-2	+23		-10		+10	+10	+2	+43	+1	+4		-1	+59	+1	+4	-0	+5	+1	+5	+5	+35		+8	+44
CHO 4	+4.8%	+117	+1				+1	+1	+1	+3		+3	-1	+8	-4		+12	+0	+1		+2	+11	+0	+4	+5	+10	-2	+2	-1	+64		+25	+88
CHO 5	+3.8%	+58	-0				-0	+4	+0	-2	+1	-1		+2	+2		-11	+3	+5		-2	-2	+2	+2	+1	+5	-3		+61	-14	+9	+56	
CHO 6	+1.6%	+19						-0		-5				-5	+1		+27	-1	-0		-1	+25	-1	+1	+2	+2	+3	-2	+1	-3		-2	-5
CHO 7	+4.1%	+122			+0		+0	-4	-1	+4			+1	+0	+17		+29	-2	+4	-1		+47	+11	+13	+9	+33	-11	+4	-7	+34	-2	+17	+49
CHO 8	+2.0%	+43		-1			-1	-4	-1	-7	+0	+4	+1	-6	+6		+19	+0	-2		-1	+22	+5	+0	+3	+8	-5	-2	-7	+28	+0	-1	+27
CHO 9	+2.8%	+91	-1	-4	+2		-3	+4	+3	-5		+5	+1	+9	+5	-2	+51	+5	+11		-1	+70	+4	+13	+1	+18	-51	+1	-50	+42		+5	+47
other Community Services	+20.2%	+1																						+1		+1							
		+3.5%	+2.1%	-38.5%	+29.3%	-0.6%	-4.4%	+0.4%	+3.4%	+0.8%	+9.7%	+12.4%	+7.3%	+0.9%	+4.0%	-0.3%	+7.5%	+4.3%	+12.3%	-11.1%	-10.8%	+6.4%	+13.5%	+10.0%	+3.8%	+7.4%	-9.7%	+6.6%	-7.4%	+4.0%	-13.8%	+4.0%	+3.8%

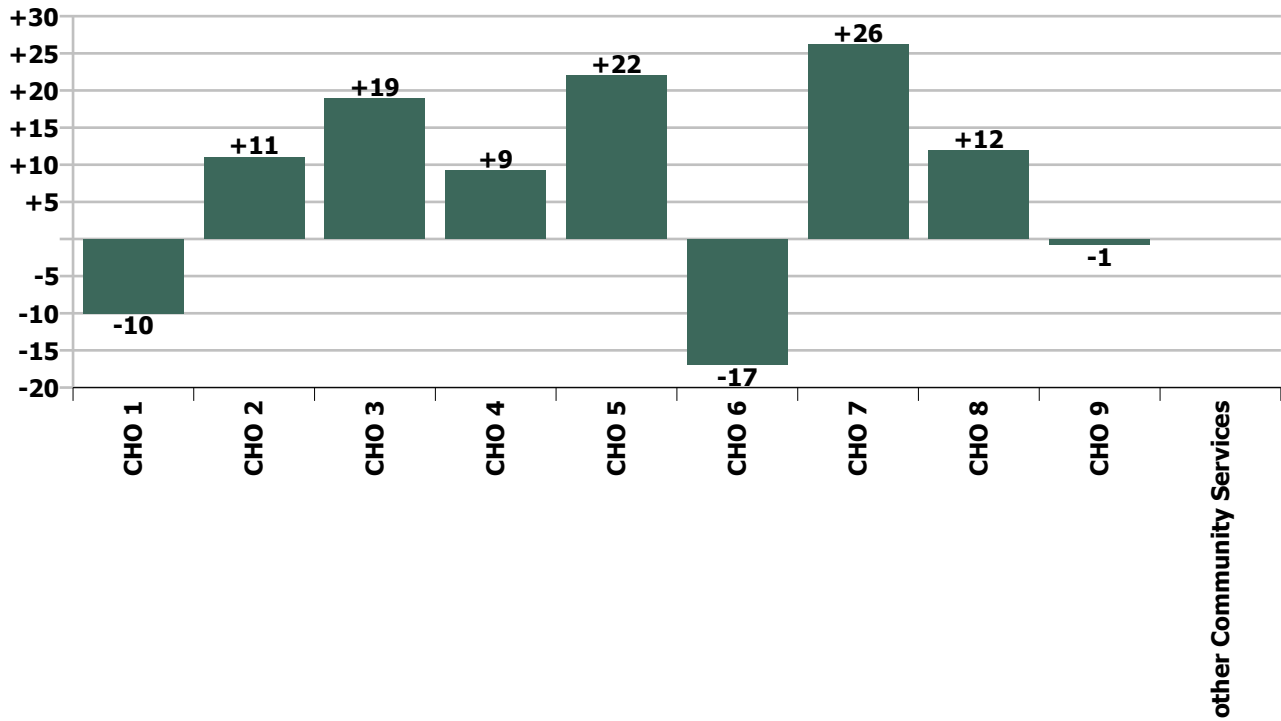
Staff Group change since: Nov 2020



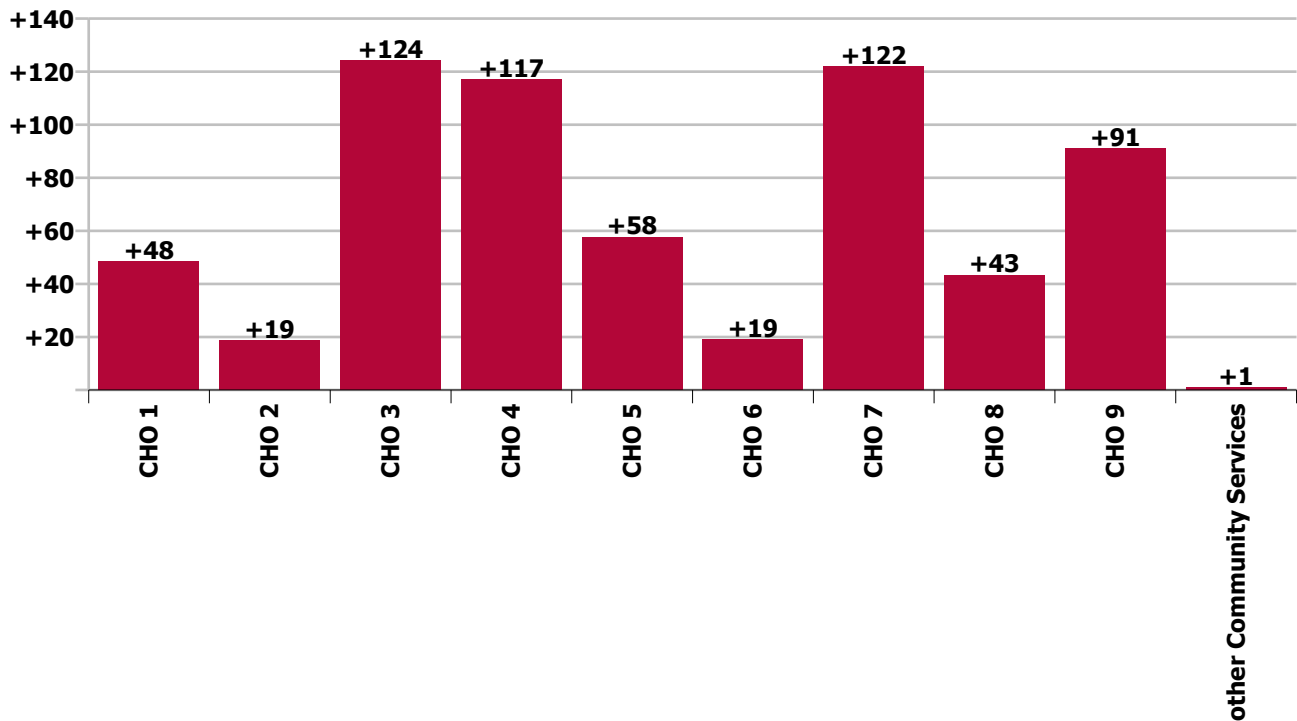
Staff Group change since: Dec 2019



CHO change since: Nov 2020



CHO change since: Dec 2019



Longitudinal Employment Levels by Grade Group - Oct 2013 to Dec 2020

Dec 2020 (Oct 2013 figure: 14,880)	WTE Dec 2020	WTE change since Oct 13	WTE change since Dec 15	WTE change since Dec 16	WTE change since Dec 17	WTE change since Dec 18	WTE change since Dec 19	% change since Oct 13	% change since Dec 15	% change since Dec 16	% change since Dec 17	% change since Dec 18	% change since Dec 19
Overall	18,944	+4,064	+3,229	+2,190	+1,547	+1,125	+642	+27.3%	+20.5%	+13.1%	+8.9%	+6.3%	+3.5%
Consultant Medicine		-2	-2	-2				-100.0%	-100.0%	-100.0%	-100.0%	-100.0%	-100.0%
Consultant Paediatrics	3	+0	-0	-0	-0			+6.6%	-3.5%	-5.0%	-2.9%		
Consultant Psychiatry	21	-7	+0	+0	-2	+3	+1	-25.8%	+2.1%	+1.0%	-6.6%	+19.2%	+2.4%
Consultant Surgery		-0	-0	-0				-100.0%	-100.0%	-100.0%	-100.0%	-100.0%	-100.0%
Consultants	24	-9	-1	-2	-2	+3	+1	-26.8%	-5.3%	-6.3%	-6.1%	+16.4%	+2.1%
Registrar	3	-5	-3	-3	-3	-2	-4	-63.5%	-50.0%	-50.0%	-50.0%	-43.6%	-57.1%
Senior Registrar	3			+1		+1	+1			+50.0%		+50.0%	+50.0%
Specialist Registrar	2				-2	+1	-2				-50.0%	+100.0%	-50.0%
Registrars	8	-5	-3	-2	-5	-0	-5	-39.4%	-27.3%	-20.0%	-38.5%	-3.8%	-38.5%
SHO/ Interns	9	+1	+4	+3	+2	+2	+2	+18.6%	+80.0%	+50.0%	+28.6%	+29.5%	+29.3%
Dentists			-1					-100.0%	-100.0%	-100.0%	-100.0%	-100.0%	-100.0%
Other Medical	14	-3	-1	-1	+0	+0	-0	-16.7%	-6.8%	-3.8%	+0.2%	+1.1%	-0.6%
Medical/ Dental, other	14	-3	-2	-1	+0	+0	-0	-16.7%	-9.9%	-3.8%	+0.2%	+1.1%	-0.6%
Medical & Dental	56	-16	-2	-1	-5	+5	-3	-21.9%	-3.4%	-2.1%	-7.6%	+10.6%	-4.4%
Clinical Nurse/ Midwife Manager	814	+24	+16	+3	+6	+6	+4	+3.1%	+2.0%	+0.4%	+0.7%	+0.7%	+0.5%
Director Nursing/Midwifery, Assistant	46	+6	+9	+3	+9	+8	+5	+16.2%	+24.5%	+7.9%	+23.2%	+20.2%	+11.9%
Director of Nursing/Midwifery	37	-5	-10	-7	-9	-1	-5	-11.4%	-21.5%	-15.5%	-18.9%	-2.8%	-12.5%
Nurse/ Midwife Manager	897	+26	+15	-0	+6	+13	+3	+3.0%	+1.7%	-0.0%	+0.7%	+1.4%	+0.4%
Advanced Nurse/ Midwife Practitioner	8	+7	+7	+7	+6	+6	+6	+700.0%	+700.0%	+700.0%	+300.0%	+300.0%	+300.0%
Clinical Nurse/ Midwife Specialist	56	-25	-17	-15	-12	-10	-4	-31.0%	-23.7%	-21.1%	-17.6%	-15.5%	-6.5%
Nurse/ Midwife Specialist & AN/MP	64	-18	-10	-8	-6	-4	+2	-22.1%	-14.0%	-11.0%	-8.5%	-6.3%	+3.4%
Graduate Nursing/ Midwifery		-10	-11					-100.0%	-100.0%	-100.0%	-100.0%	-100.0%	-100.0%
Staff Nurse [Intellectual Disability]	1,788	+33	+8	+63	+85	+104	+191	+1.9%	+0.5%	+3.7%	+5.0%	+6.2%	+12.0%
Staff Nurse [Psychiatric]	53	-92	-53	-32	-18	-18	-31	-63.7%	-50.1%	-37.9%	-25.3%	-25.8%	-37.0%
Staff Nurses [General/ Children's]	752	-266	-144	-181	-172	-116	-139	-26.2%	-16.1%	-19.4%	-18.6%	-13.4%	-15.6%
Staff Nurse/ Staff Midwife	2,593	-336	-200	-150	-104	-30	+21	-11.5%	-7.1%	-5.5%	-3.9%	-1.2%	+0.8%
Public Health Nurse	7	-0	-0	+0	+1	+0	+1	-3.5%	-5.1%	+5.8%	+12.8%	+2.7%	+9.7%
Pre-registration Nurse/ Midwife Intern	3	-19	-12	-10	-9	-32	-26	-88.4%	-82.5%	-79.2%	-78.8%	-92.8%	-91.2%
Pre-registration Nurse Intern (COVID-19)	32	+32	+32	+32	+32	+32	+32	-100.0%	-100.0%	-100.0%	-100.0%	-100.0%	-100.0%
Nursing/ Midwifery awaiting registration	13	+13	+13	+13	+13	+13	-1	-100.0%	-100.0%	-100.0%	-100.0%	-100.0%	-6.1%
Nursing/ Midwifery Student	47	+26	+33	+35	+36	+12	+5	+119.5%	+231.2%	+294.1%	+301.1%	+35.8%	+12.4%
Nursing Education/Clinical	23	-2	+2	+2	+2	+2	+2	-7.9%	+11.7%	+7.3%	+8.1%	+7.7%	+7.6%
Other Nursing/ Midwifery	1	-7	-5	-4	-4			-87.1%	-84.5%	-80.0%	-80.0%		
Nursing/ Midwifery other	24	-9	-3	-2	-2	+2	+2	-26.8%	-11.4%	-9.3%	-8.8%	+7.4%	+7.3%
Nursing & Midwifery	3,632	-311	-165	-125	-71	-8	+34	-7.9%	-4.4%	-3.3%	-1.9%	-0.2%	+0.9%
Dietitians	16	-2	+5	+3	+4	+3	-2	-12.3%	+39.2%	+24.7%	+37.6%	+19.7%	-11.1%
Occupational Therapists	279	+97	+77	+27	+30	+38	+14	+53.5%	+38.2%	+10.9%	+12.0%	+15.6%	+5.5%

Dec 2020 (Oct 2013 figure: 14,880)	WTE Dec 2020	WTE change since Oct 13	WTE change since Dec 15	WTE change since Dec 16	WTE change since Dec 17	WTE change since Dec 18	WTE change since Dec 19	% change since Oct 13	% change since Dec 15	% change since Dec 16	% change since Dec 17	% change since Dec 18	% change since Dec 19
Overall	18,944	+4,064	+3,229	+2,190	+1,547	+1,125	+642	+27.3%	+20.5%	+13.1%	+8.9%	+6.3%	+3.5%
Physiotherapists	193	+44	+27	+8	+8	+12	+4	+29.3%	+16.5%	+4.4%	+4.5%	+6.7%	+2.0%
Podiatrists & Chiropodists		-0	-0	-0	-0			-100.0%	-100.0%	-100.0%	-100.0%	-100.0%	-100.0%
Speech & Language Therapists	307	+129	+94	+37	+25	+28	+15	+72.3%	+44.2%	+13.5%	+8.7%	+10.1%	+5.0%
Therapy Professions	795	+267	+203	+75	+67	+81	+31	+50.6%	+34.3%	+10.5%	+9.2%	+11.3%	+4.0%
Audiology		-7	-14	-13	-18			-100.0%	-100.0%	-100.0%	-100.0%	-100.0%	-100.0%
Clinical Engineering	13	-5	-5	-5	-5	+1	-0	-27.7%	-28.5%	-29.2%	-28.1%	+7.9%	-0.4%
Clinical Measurement	2	+1	+1	+1	+1	+1	+1	+100.0%	+100.0%	+100.0%	+100.0%	+100.0%	+100.0%
Medical Laboratory	4	+1	+1	+1	+1			+33.3%	+33.3%	+33.3%	+33.3%		
Phlebotomists						-1	-1	-100.0%	-100.0%	-100.0%	-100.0%	-100.0%	-100.0%
Radiographers	1	-0						-3.8%					
Health Science/ Diagnostics	20	-10	-17	-16	-21	+1	-0	-32.5%	-46.1%	-44.5%	-51.2%	+5.0%	-0.3%
Social Care	2,789	+1,029	+850	+598	+443	+301	+194	+58.5%	+43.8%	+27.3%	+18.9%	+12.1%	+7.5%
Social Workers	228	+48	+39	+13	+8	+9	+9	+26.5%	+20.7%	+5.8%	+3.4%	+4.0%	+4.3%
Psychologists	229	+63	+38	+19	+6	+23	+25	+38.2%	+19.6%	+9.2%	+2.5%	+10.9%	+12.3%
Pharmacy	6	+0	-0	-0	-0	-1	-1	+5.2%	-1.6%	-1.6%	-1.0%	-13.9%	-11.1%
Counsellor Therapists	20	+7	+3	+3	+0	+2	+1	+55.3%	+18.7%	+17.3%	+1.7%	+11.3%	+4.6%
HSCP Trainees/ Students		-2	-3	-2	-1			-100.0%	-100.0%	-100.0%	-100.0%	-100.0%	-100.0%
Other Health & Social Care	45	-22	-17	-13	-14	-7	-5	-32.5%	-27.1%	-22.7%	-23.3%	-13.1%	-10.8%
Play Therapists/ Specialists	11	-5	-2	-3	-2	-4	-5	-32.7%	-17.1%	-20.4%	-17.5%	-25.4%	-29.6%
H&SC, Other	76	-22	-19	-15	-16	-9	-9	-22.5%	-20.1%	-16.9%	-17.6%	-10.1%	-10.8%
Health & Social Care Professionals	4,144	+1,377	+1,093	+673	+486	+404	+249	+49.7%	+35.8%	+19.4%	+13.3%	+10.8%	+6.4%
Executive Management	36	+10	+8	+7	-2	+4	+5	+38.7%	+28.6%	+24.1%	-5.3%	+13.2%	+17.0%
Senior Management (VIII & GM)	168	+54	+37	+30	+27	+23	+19	+46.8%	+28.7%	+22.2%	+19.3%	+16.2%	+12.8%
Management (VIII & above)	204	+64	+45	+37	+25	+28	+24	+45.3%	+28.7%	+22.5%	+14.1%	+15.7%	+13.5%
Middle Management (V-VII)	511	+191	+168	+132	+119	+83	+47	+59.6%	+48.8%	+34.7%	+30.2%	+19.4%	+10.1%
Other Administrative	16	-1	+1	+2	-0		+1	-8.3%	+3.7%	+14.5%	-0.9%		+5.7%
Administrative/ Supervisory (V to VII)	527	+189	+168	+134	+118	+83	+48	+56.1%	+46.9%	+34.0%	+29.0%	+18.8%	+10.0%
Clerical (III & IV)	685	+111	+102	+78	+53	+32	+25	+19.4%	+17.5%	+12.9%	+8.4%	+4.9%	+3.8%
Management & Administrative	1,416	+364	+316	+250	+197	+143	+97	+34.6%	+28.7%	+21.4%	+16.2%	+11.2%	+7.4%
Catering	96	-41	-21	-17	-10	-8	-2	-29.7%	-17.7%	-15.1%	-9.1%	-7.9%	-1.9%
Household Services	406	-212	-143	-102	-61	-46	-14	-34.3%	-26.0%	-20.0%	-13.0%	-10.2%	-3.3%
Other Labs & Associated	1		-0	-0		-0			-16.7%	-6.5%		-3.8%	
Other Support	136	-59	-72	-58	-54	-55	-52	-30.2%	-34.5%	-30.0%	-28.4%	-29.0%	-27.9%
Portering	24	-22	-4	-2	-2	-1	-3	-47.6%	-12.8%	-8.7%	-8.1%	-5.3%	-11.8%
Support	663	-334	-239	-179	-126	-111	-71	-33.5%	-26.5%	-21.3%	-16.0%	-14.3%	-9.7%
Maintenance	121	-8	-6	-3	-10	+1	+5	-6.3%	-4.6%	-2.7%	-7.4%	+1.2%	+4.5%
Technical Services	11	+7	+6	+6	+6	+5	+3	+170.7%	+117.6%	+117.6%	+117.6%	+82.0%	+37.0%
Maintenance/ Technical	132	-1	+0	+3	-4	+6	+8	-0.8%	+0.2%	+2.0%	-2.7%	+5.1%	+6.6%

Dec 2020 (Oct 2013 figure: 14,880)	WTE Dec 2020	WTE change since Oct 13	WTE change since Dec 15	WTE change since Dec 16	WTE change since Dec 17	WTE change since Dec 18	WTE change since Dec 19	% change since Oct 13	% change since Dec 15	% change since Dec 16	% change since Dec 17	% change since Dec 18	% change since Dec 19
Overall	18,944	+4,064	+3,229	+2,190	+1,547	+1,125	+642	+27.3%	+20.5%	+13.1%	+8.9%	+6.3%	+3.5%
General Support	795	-335	-239	-177	-130	-105	-63	-29.6%	-23.1%	-18.2%	-14.0%	-11.6%	-7.4%
HCA, Nurse's Aide, etc.	7,091	+2,663	+1,922	+1,338	+915	+561	+275	+60.1%	+37.2%	+23.3%	+14.8%	+8.6%	+4.0%
Health & Social Care Assistants	11	+2	+1	+0	+2	+0	+1	+20.0%	+5.5%	+3.0%	+21.5%	+1.4%	+15.5%
Health Care Assistants	7,102	+2,665	+1,923	+1,338	+917	+561	+276	+60.0%	+37.1%	+23.2%	+14.8%	+8.6%	+4.0%
Home Help	94	-44	+1	-2	-30	-19	-15	-32.2%	+1.2%	-1.7%	-24.2%	-16.8%	-13.8%
Ambulance Staff		-8						-100.0%	-100.0%	-100.0%	-100.0%	-100.0%	-100.0%
Care, other	1,706	+372	+302	+233	+182	+143	+66	+27.9%	+21.5%	+15.8%	+11.9%	+9.2%	+4.0%
Patient & Client Care	8,902	+2,985	+2,226	+1,570	+1,069	+685	+327	+50.4%	+33.3%	+21.4%	+13.6%	+8.3%	+3.8%

Source: Health Service Personnel Census