

# Social Care Disability Services Employment Report: July 2020

## Employment by Staff Group

Jul 2020 (Dec 2019 figure: 18,303)	WTE Jun 2020	WTE Jul 2020	WTE change since Jun 20	% change since Jun 20	WTE change since Dec 19	WTE change since Jul 19
<b>Overall</b>	<b>18,382</b>	<b>18,419</b>	<b>+37</b>	<b>+0.2%</b>	<b>+116</b>	<b>+354</b>
Consultants	23	22	-0	-1.3%	-2	-1
Registrars	10	10	-0	-1.1%	-3	-1
SHO/ Interns	10	9	-1	-6.7%	+2	+2
Medical/ Dental, other	15	14	-0	-2.4%	+0	-0
<b>Medical &amp; Dental</b>	<b>57</b>	<b>56</b>	<b>-1</b>	<b>-2.5%</b>	<b>-3</b>	<b>+0</b>
Nurse/ Midwife Manager	896	899	+3	+0.3%	+6	+10
Nurse/ Midwife Specialist & AN/MP	64	65	+0	+0.1%	+3	+3
Staff Nurse/ Staff Midwife	2,537	2,521	-16	-0.6%	-51	-16
Public Health Nurse	6	6	-0	-0.8%	-0	+1
<i>Pre-registration Nurse/ Midwife Intern</i>	7	6.79	-0	-3.0%	-21	-63
<i>Pre-registration Nurse Intern (COVID-19)</i>	160	154.94	-5	-3.0%	+155	+155
<i>Post-registration Nurse/ Midwife Student</i>	4	3.93	-0	-1.7%	+4	+4
<i>Nursing/ Midwifery awaiting registration</i>	11	11.00			-3	+11
Nursing/ Midwifery Student	182	177	-5	-2.8%	+135	+107
Nursing/ Midwifery other	25	25	+0	+0.0%	+3	+4
<b>Nursing &amp; Midwifery</b>	<b>3,711</b>	<b>3,693</b>	<b>-18</b>	<b>-0.5%</b>	<b>+94</b>	<b>+108</b>
Therapy Professions	782	782	+0	+0.0%	+18	+56
Health Science/ Diagnostics	19	19			-1	-1
Social Care	2,614	2,618	+4	+0.2%	+23	+55
Social Workers	226	221	-5	-2.0%	+2	+6
Psychologists	212	212	+0	+0.1%	+8	+6
Pharmacy	7	8	+0	+6.4%	+1	+2
H&SC, Other	83	83	+0	+0.3%	-1	-0
<b>Health &amp; Social Care Professionals</b>	<b>3,943</b>	<b>3,944</b>	<b>+1</b>	<b>+0.0%</b>	<b>+50</b>	<b>+123</b>
Management (VIII & above)	188	190	+2	+1.1%	+11	+8
Administrative/ Supervisory (V to VII)	501	499	-2	-0.3%	+20	+37
Clerical (III & IV)	676	680	+4	+0.6%	+20	+34
<b>Management &amp; Administrative</b>	<b>1,365</b>	<b>1,369</b>	<b>+4</b>	<b>+0.3%</b>	<b>+51</b>	<b>+80</b>
Support	729	708	-21	-2.9%	-26	-24
Maintenance/ Technical	129	130	+1	+0.7%	+6	+0
<b>General Support</b>	<b>858</b>	<b>838</b>	<b>-20</b>	<b>-2.4%</b>	<b>-20</b>	<b>-24</b>
Health Care Assistants	6,779	6,833	+54	+0.8%	+7	+56
Home Help	89	101	+12	+13.6%	-8	-11
Care, other	1,581	1,585	+5	+0.3%	-54	+23
<b>Patient &amp; Client Care</b>	<b>8,448</b>	<b>8,519</b>	<b>+71</b>	<b>+0.8%</b>	<b>-55</b>	<b>+68</b>

## Social Care Disability Services Employment by Administration (HSE / S38): July 2020

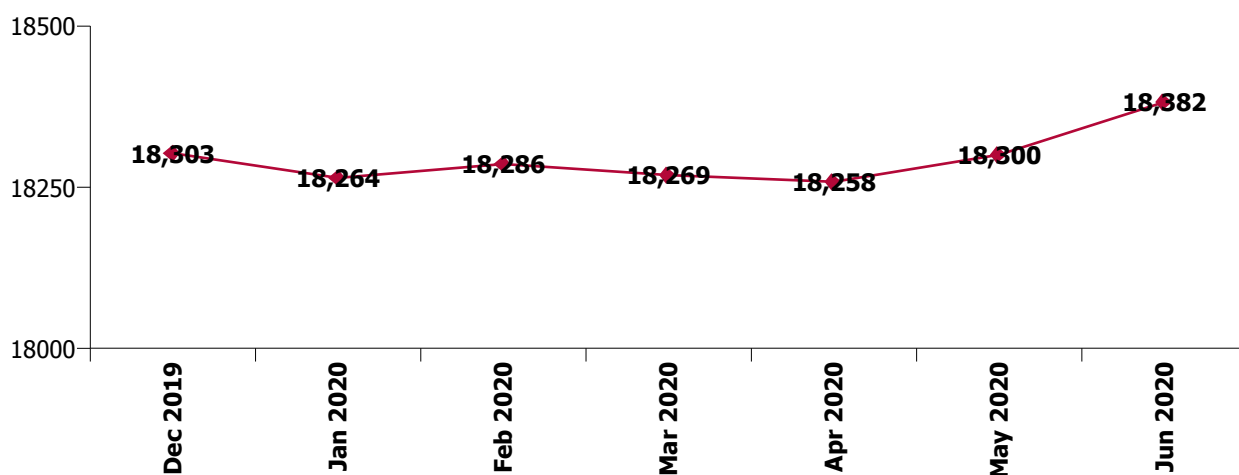
Jul 2020 (Dec 2019 figure: 18,303)	WTE Jun 2020	WTE Jul 2020	WTE change since Jun 20	% change since Jun 20	WTE change since Dec 19	WTE change since Jul 19
<b>Overall</b>	<b>18,382</b>	<b>18,419</b>	<b>+37</b>	<b>+0.2%</b>	<b>+116</b>	<b>+354</b>
<b>HSE</b>	<b>3,959</b>	<b>3,987</b>	<b>+28</b>	<b>+0.7%</b>	<b>+84</b>	<b>+139</b>
<b>Section 38</b>	<b>14,423</b>	<b>14,431</b>	<b>+8</b>	<b>+0.1%</b>	<b>+32</b>	<b>+216</b>

### HSE

Jul 2020 (Dec 2019 figure: 3,903)	WTE Jun 2020	WTE Jul 2020	WTE change since Jun 20	% change since Jun 20	WTE change since Dec 19	WTE change since Jul 19
<b>Overall</b>	<b>3,959</b>	<b>3,987</b>	<b>+28</b>	<b>+0.7%</b>	<b>+84</b>	<b>+139</b>
Consultants	8	7.50				
Registrars	1	1.81	+1	+81.0%	-1	+1
SHO/ Interns	2	1.83	-0	-8.5%	+2	+2
Medical/ Dental, other	6	6.33			+0	-0
<b>Medical &amp; Dental</b>	<b>17</b>	<b>17</b>	<b>+1</b>	<b>+3.8%</b>	<b>+1</b>	<b>+2</b>
Nurse/ Midwife Manager	255	259.65	+5	+1.8%	+1	+3
Nurse/ Midwife Specialist & AN/MP	17	17.65	+1	+6.3%	+4	+4
Staff Nurse/ Staff Midwife	778	772.32	-5	-0.7%	-19	-1
Public Health Nurse	6	6.17	-0	-0.8%	-0	+1
Pre-registration Nurse/ Midwife Intern	7	6.79	-0	-3.0%	+4	-14
Pre-registration Nurse Intern (COVID-19)	43	37.60	-5	-12.6%	+38	+38
Nursing/ Midwifery awaiting registration	11	11.00			-3	+11
Nursing/ Midwifery Student	61	55.39	-6	-9.2%	+38	+35
Nursing/ Midwifery other	8	7.67			-0	-0
<b>Nursing &amp; Midwifery</b>	<b>1,124</b>	<b>1,119</b>	<b>-5</b>	<b>-0.5%</b>	<b>+25</b>	<b>+41</b>
Therapy Professions	347	349.08	+2	+0.6%	+18	+40
Health Science/ Diagnostics	3	2.95			+1	+1
Social Care	92	93.15	+1	+1.4%	+4	-2
Social Workers	65	64.92	-0	-0.5%	+7	+7
Psychologists	74	75.31	+2	+2.3%	-1	-3
H&SC, Other	24	25.74	+2	+8.2%	-1	+0
<b>Health &amp; Social Care Professionals</b>	<b>605</b>	<b>611</b>	<b>+7</b>	<b>+1.1%</b>	<b>+29</b>	<b>+43</b>
Management (VIII & above)	53	52.92	-0	-0.1%	+8	+7
Administrative/ Supervisory (V to VII)	152	151.18	-1	-0.7%	+10	+20
Clerical (III & IV)	191	190.84	-1	-0.3%	+13	+27
<b>Management &amp; Administrative</b>	<b>397</b>	<b>395</b>	<b>-2</b>	<b>-0.4%</b>	<b>+31</b>	<b>+53</b>
Support	85	85.66	+0	+0.3%	-3	-9
Maintenance/ Technical	25	26.83	+2	+8.7%	+6	+6
<b>General Support</b>	<b>110</b>	<b>112</b>	<b>+2</b>	<b>+2.2%</b>	<b>+3</b>	<b>-3</b>
Health Care Assistants	1,508	1,520.95	+13	+0.8%	+3	+12
Home Help	89	101.02	+12	+13.6%	-8	-11
Care, other	109	110.60	+1	+1.1%	+1	+1
<b>Patient &amp; Client Care</b>	<b>1,707</b>	<b>1,733</b>	<b>+26</b>	<b>+1.5%</b>	<b>-3</b>	<b>+2</b>

## Section 38

Jul 2020 (Dec 2019 figure: 14,400)	WTE Jun 2020	WTE Jul 2020	WTE change since Jun 20	% change since Jun 20	WTE change since Dec 19	WTE change since Jul 19
<b>Overall</b>	<b>14,423</b>	<b>14,431</b>	<b>+8</b>	<b>+0.1%</b>	<b>+32</b>	<b>+216</b>
Consultants	15	14.84	-0	-2.0%	-2	-1
Registrars	9	7.71	-1	-10.7%	-2	-2
SHO/ Interns	8	7.42	-0	-6.2%	+0	+0
Medical/ Dental, other	8	8.09	-0	-4.1%		
<b>Medical &amp; Dental</b>	<b>40</b>	<b>38</b>	<b>-2</b>	<b>-5.1%</b>	<b>-3</b>	<b>-2</b>
Nurse/ Midwife Manager	641	639.68	-1	-0.2%	+4	+7
Nurse/ Midwife Specialist & AN/MP	48	46.87	-1	-2.1%	-1	-1
Staff Nurse/ Staff Midwife	1,759	1,748.79	-10	-0.6%	-32	-15
Pre-registration Nurse/ Midwife Intern				-100.0%	-25	-49
Pre-registration Nurse Intern (COVID-19)	117	117.34	+1	+0.5%	+117	+117
Post-registration Nurse/ Midwife Student	4	3.93	-0	-1.7%	+4	+4
Nursing/ Midwifery Student	121	121.27	+0	+0.4%	+96	+72
Nursing/ Midwifery other	17	17.26			+3	+4
<b>Nursing &amp; Midwifery</b>	<b>2,586</b>	<b>2,574</b>	<b>-12</b>	<b>-0.5%</b>	<b>+69</b>	<b>+67</b>
Therapy Professions	435	433.05	-2	-0.4%	+0	+15
Health Science/ Diagnostics	16	16.00			-2	-2
Social Care	2,522	2,524.72	+3	+0.1%	+19	+57
Social Workers	160	156.27	-4	-2.6%	-5	-1
Psychologists	139	137.12	-2	-1.1%	+9	+9
Pharmacy	7	7.78	+0	+6.4%	+1	+2
H&SC, Other	59	57.68	-2	-2.8%	-1	-1
<b>Health &amp; Social Care Professionals</b>	<b>3,338</b>	<b>3,333</b>	<b>-6</b>	<b>-0.2%</b>	<b>+21</b>	<b>+79</b>
Management (VIII & above)	135	137.44	+2	+1.6%	+3	+1
Administrative/ Supervisory (V to VII)	348	347.73	-1	-0.2%	+10	+18
Clerical (III & IV)	485	489.29	+4	+0.9%	+7	+7
<b>Management &amp; Administrative</b>	<b>968</b>	<b>974</b>	<b>+6</b>	<b>+0.6%</b>	<b>+20</b>	<b>+26</b>
<b>General Support</b>	<b>748</b>	<b>725</b>	<b>-23</b>	<b>-3.0%</b>	<b>-24</b>	<b>-21</b>
<b>Patient &amp; Client Care</b>	<b>6,742</b>	<b>6,787</b>	<b>+45</b>	<b>+0.7%</b>	<b>-52</b>	<b>+66</b>



## Social Care Disability Services Employment by CHO Jul 2020

### CHO 1

Jul 2020 (Dec 2019 figure: 1,498)	WTE Jun 2020	WTE Jul 2020	WTE change since Jun 20	% change since Jun 20	WTE change since Dec 19	WTE change since Jul 19
<b>Overall</b>	<b>1,526</b>	<b>1,536</b>	<b>+10</b>	<b>+0.7%</b>	<b>+37</b>	<b>+39</b>
Consultants				-100.0%		
Medical/ Dental, other	3	3			+0	+0
<b>Medical &amp; Dental</b>	<b>3</b>	<b>3</b>			<b>+0</b>	<b>+0</b>
Nurse/ Midwife Manager	108	109	+1	+0.7%	+3	+3
Nurse/ Midwife Specialist & AN/MP	10	10			+3	+3
Staff Nurse/ Staff Midwife	318	319	+1	+0.3%	-5	-10
Pre-registration Nurse/ Midwife Intern	7		-7	-100.0%	-11	-11
Pre-registration Nurse Intern (COVID-19)	21	27	+6	+29.8%	+27	+27
Nursing/ Midwifery awaiting registration	11	11			+11	+11
Nursing/ Midwifery Student	39	38	-1	-1.9%	+24	+27
Nursing/ Midwifery other	5	5			-0	-0
<b>Nursing &amp; Midwifery</b>	<b>479</b>	<b>480</b>	<b>+1</b>	<b>+0.2%</b>	<b>+26</b>	<b>+23</b>
Therapy Professions	45	44	-0	-0.8%	+2	+5
Social Care	9	9	+0	+0.8%	+1	+0
Social Workers	20	20	-0	-0.5%	+4	+6
Psychologists	6	6	+0	+1.2%	+1	+1
H&SC, Other	9	10	+1	+9.2%	-3	-3
<b>Health &amp; Social Care Professionals</b>	<b>88</b>	<b>88</b>	<b>+1</b>	<b>+0.6%</b>	<b>+6</b>	<b>+10</b>
Management (VIII & above)	15	15			+1	+1
Administrative/ Supervisory (V to VII)	33	32	-1	-3.0%	+5	+7
Clerical (III & IV)	47	50	+3	+5.7%	+0	+4
<b>Management &amp; Administrative</b>	<b>96</b>	<b>97</b>	<b>+2</b>	<b>+1.7%</b>	<b>+6</b>	<b>+13</b>
Support	50	50	+0	+0.2%	+1	-0
Maintenance/ Technical	6	6				-0
<b>General Support</b>	<b>56</b>	<b>56</b>	<b>+0</b>	<b>+0.2%</b>	<b>+1</b>	<b>-0</b>
Health Care Assistants	754	759	+5	+0.7%	-2	-6
Home Help	14	14	+0	+0.1%	+0	-1
Care, other	37	38	+1	+3.8%	+1	+1
<b>Patient &amp; Client Care</b>	<b>804</b>	<b>811</b>	<b>+7</b>	<b>+0.8%</b>	<b>-1</b>	<b>-6</b>

## CHO 2

Jul 2020 (Dec 2019 figure: 1,497)	WTE Jun 2020	WTE Jul 2020	WTE change since Jun 20	% change since Jun 20	WTE change since Dec 19	WTE change since Jul 19
<b>Overall</b>	<b>1,474</b>	<b>1,479</b>	<b>+4</b>	<b>+0.3%</b>	<b>-18</b>	<b>+17</b>
Consultants	4	3	-0	-2.9%		
Registrars	2	2	+0	+10.0%	+0	+0
Medical/ Dental, other	1	1				
<b>Medical &amp; Dental</b>	<b>7</b>	<b>7</b>	<b>+0</b>	<b>+1.5%</b>	<b>+0</b>	<b>+0</b>
Nurse/ Midwife Manager	76	77	+1	+1.0%	-0	+6
Nurse/ Midwife Specialist & AN/MP	6	5	-1	-17.2%	-1	-1
Staff Nurse/ Staff Midwife	163	162	-1	-0.9%	-3	-2
<i>Pre-registration Nurse Intern (COVID-19)</i>		1	+1	-100.0%	+1	+1
Nursing/ Midwifery Student		1	+1	-100.0%	+1	+1
<b>Nursing &amp; Midwifery</b>	<b>246</b>	<b>245</b>	<b>-1</b>	<b>-0.3%</b>	<b>-3</b>	<b>+4</b>
Therapy Professions	35	34	-1	-3.8%	-7	-5
Social Care	240	239	-0	-0.1%	+17	+20
Social Workers	26	26	-1	-2.0%	-0	-0
Psychologists	15	14	-1	-6.9%	-1	-2
H&SC, Other	14	13	-1	-5.1%	-2	-3
<b>Health &amp; Social Care Professionals</b>	<b>331</b>	<b>327</b>	<b>-4</b>	<b>-1.2%</b>	<b>+6</b>	<b>+9</b>
Management (VIII & above)	15	16	+1	+6.9%	-0	-0
Administrative/ Supervisory (V to VII)	40	40	-0	-0.2%	-1	+1
Clerical (III & IV)	49	48	-1	-2.2%	-2	-4
<b>Management &amp; Administrative</b>	<b>103</b>	<b>103</b>	<b>-0</b>	<b>-0.1%</b>	<b>-3</b>	<b>-3</b>
Support	40	35	-5	-11.5%	-9	-10
Maintenance/ Technical	13	13			+0	+0
<b>General Support</b>	<b>53</b>	<b>48</b>	<b>-5</b>	<b>-8.7%</b>	<b>-9</b>	<b>-10</b>
Health Care Assistants	610	620	+10	+1.7%	-3	+11
Care, other	125	129	+4	+2.9%	-6	+5
<b>Patient &amp; Client Care</b>	<b>735</b>	<b>749</b>	<b>+14</b>	<b>+1.9%</b>	<b>-8</b>	<b>+16</b>

### CHO 3

Jul 2020 (Dec 2019 figure: 1,823)	WTE Jun 2020	WTE Jul 2020	WTE change since Jun 20	% change since Jun 20	WTE change since Dec 19	WTE change since Jul 19
<b>Overall</b>	<b>1,891</b>	<b>1,899</b>	<b>+8</b>	<b>+0.4%</b>	<b>+76</b>	<b>+83</b>
Consultants	1	2	+1	+60.0%	+1	-0
Medical/ Dental, other	1	1				
<b>Medical &amp; Dental</b>	<b>2</b>	<b>3</b>	<b>+1</b>	<b>+31.1%</b>	<b>+1</b>	<b>-0</b>
Nurse/ Midwife Manager	81	79	-2	-1.9%	+3	+7
Nurse/ Midwife Specialist & AN/MP	11	11			-2	+1
Staff Nurse/ Staff Midwife	252	251	-1	-0.3%	+4	-2
Pre-registration Nurse/ Midwife Intern				-100.0%	-7	-6
Pre-registration Nurse Intern (COVID-19)	24	24	-0	-0.5%	+24	+24
Nursing/ Midwifery Student	24	24	-0	-0.5%	+12	+18
Nursing/ Midwifery other	4	4				
<b>Nursing &amp; Midwifery</b>	<b>372</b>	<b>369</b>	<b>-3</b>	<b>-0.7%</b>	<b>+18</b>	<b>+23</b>
Therapy Professions	77	79	+2	+2.7%	+4	+6
Health Science/ Diagnostics	1	1			+1	+1
Social Care	253	260	+8	+3.0%	+19	+13
Social Workers	15	14	-1	-6.2%	-3	-4
Psychologists	21	22	+1	+4.9%	+6	+5
H&SC, Other	12	12	-0	-0.1%	+0	-0
<b>Health &amp; Social Care Professionals</b>	<b>378</b>	<b>388</b>	<b>+10</b>	<b>+2.6%</b>	<b>+28</b>	<b>+21</b>
Management (VIII & above)	7	7				
Administrative/ Supervisory (V to VII)	42	44	+2	+5.5%	+3	+2
Clerical (III & IV)	61	60	-1	-0.8%	+1	+3
<b>Management &amp; Administrative</b>	<b>109</b>	<b>111</b>	<b>+2</b>	<b>+1.6%</b>	<b>+4</b>	<b>+5</b>
Support	54	54	+0	+0.0%	+1	-3
Maintenance/ Technical	17	19	+2	+12.8%	+4	+4
<b>General Support</b>	<b>71</b>	<b>73</b>	<b>+2</b>	<b>+3.0%</b>	<b>+6</b>	<b>+1</b>
Health Care Assistants	789	783	-6	-0.8%	+18	+27
Care, other	171	173	+3	+1.5%	+0	+5
<b>Patient &amp; Client Care</b>	<b>960</b>	<b>956</b>	<b>-4</b>	<b>-0.4%</b>	<b>+19</b>	<b>+32</b>

## CHO 4

Jul 2020 (Dec 2019 figure: 2,439)	WTE Jun 2020	WTE Jul 2020	WTE change since Jun 20	% change since Jun 20	WTE change since Dec 19	WTE change since Jul 19
<b>Overall</b>	<b>2,475</b>	<b>2,495</b>	<b>+21</b>	<b>+0.8%</b>	<b>+57</b>	<b>+33</b>
Consultants	2	2				
Medical/ Dental, other	0	0				
<b>Medical &amp; Dental</b>	<b>2</b>	<b>2</b>				
Nurse/ Midwife Manager	90	90	-0	-0.4%	+0	-3
Nurse/ Midwife Specialist & AN/MP	13	14	+1	+7.4%	+1	+1
Staff Nurse/ Staff Midwife	308	305	-3	-1.1%	-4	-8
Pre-registration Nurse/ Midwife Intern				-100.0%	-8	-11
Pre-registration Nurse Intern (COVID-19)	27	27			+27	+27
Nursing/ Midwifery awaiting registration				-100.0%		
Nursing/ Midwifery Student	27	27			+20	+17
Nursing/ Midwifery other	1	1				
<b>Nursing &amp; Midwifery</b>	<b>439</b>	<b>437</b>	<b>-3</b>	<b>-0.6%</b>	<b>+17</b>	<b>+7</b>
Therapy Professions	103	103	+0	+0.0%	-5	-4
Social Care	228	229	+1	+0.4%	+2	+5
Social Workers	26	26	-0	-1.2%	-1	+0
Psychologists	34	33	-0	-0.3%	-1	-0
H&SC, Other	10	11	+1	+12.8%	+2	+3
<b>Health &amp; Social Care Professionals</b>	<b>400</b>	<b>402</b>	<b>+2</b>	<b>+0.4%</b>	<b>-3</b>	<b>+4</b>
Management (VIII & above)	24	24			+1	+2
Administrative/ Supervisory (V to VII)	54	54	-0	-0.4%	+1	+3
Clerical (III & IV)	88	89	+1	+1.2%	+5	+0
<b>Management &amp; Administrative</b>	<b>166</b>	<b>167</b>	<b>+1</b>	<b>+0.5%</b>	<b>+7</b>	<b>+6</b>
Support	139	140	+1	+1.0%	-1	+3
Maintenance/ Technical	10	10				-1
<b>General Support</b>	<b>149</b>	<b>150</b>	<b>+1</b>	<b>+1.0%</b>	<b>-1</b>	<b>+2</b>
Health Care Assistants	1,024	1,038	+14	+1.3%	+43	+4
Care, other	295	300	+5	+1.8%	-7	+11
<b>Patient &amp; Client Care</b>	<b>1,319</b>	<b>1,338</b>	<b>+19</b>	<b>+1.5%</b>	<b>+36</b>	<b>+14</b>

## CHO 5

Jul 2020 (Dec 2019 figure: 1,505)	WTE Jun 2020	WTE Jul 2020	WTE change since Jun 20	% change since Jun 20	WTE change since Dec 19	WTE change since Jul 19
<b>Overall</b>	<b>1,478</b>	<b>1,505</b>	<b>+27</b>	<b>+1.8%</b>	<b>-0</b>	<b>+48</b>
Consultants	1		-1	-100.0%	-1	-1
Medical/ Dental, other				-100.0%		-0
<b>Medical &amp; Dental</b>	<b>1</b>		<b>-1</b>	<b>-100.0%</b>	<b>-1</b>	<b>-1</b>
Nurse/ Midwife Manager	66	68	+2	+2.7%	+3	+1
Nurse/ Midwife Specialist & AN/MP	2	3	+1	+50.0%	+1	+1
Staff Nurse/ Staff Midwife	166	161	-5	-3.2%	-9	+9
Public Health Nurse	5	5	-0	-1.0%	-0	+1
<i>Pre-registration Nurse/ Midwife Intern</i>				-100.0%		-11
<i>Pre-registration Nurse Intern (COVID-19)</i>	12	7	-4	-35.6%	+7	+7
<i>Post-registration Nurse/ Midwife Student</i>	4	4	-0	-1.7%	+4	+4
<i>Nursing/ Midwifery awaiting registration</i>				-100.0%		
Nursing/ Midwifery Student	16	11	-4	-26.9%	+10	+1
<b>Nursing &amp; Midwifery</b>	<b>255</b>	<b>249</b>	<b>-7</b>	<b>-2.7%</b>	<b>+4</b>	<b>+13</b>
Therapy Professions	60	59	-2	-2.7%	-4	+1
Social Care	139	140	+1	+0.6%	-14	-16
Social Workers	24	22	-2	-7.1%	+1	+1
Psychologists	13	13	+1	+5.6%	-1	+1
H&SC, Other	7	8	+1	+14.8%	+1	+1
<b>Health &amp; Social Care Professionals</b>	<b>242</b>	<b>241</b>	<b>-1</b>	<b>-0.3%</b>	<b>-17</b>	<b>-12</b>
Management (VIII & above)	12	11	-1	-5.8%	+0	+1
Administrative/ Supervisory (V to VII)	41	39	-1	-3.6%	+0	+4
Clerical (III & IV)	59	57	-2	-3.0%	-3	-0
<b>Management &amp; Administrative</b>	<b>112</b>	<b>108</b>	<b>-4</b>	<b>-3.5%</b>	<b>-2</b>	<b>+5</b>
Support	14	15	+0	+0.7%	-1	-7
Maintenance/ Technical	7	7				-3
<b>General Support</b>	<b>22</b>	<b>22</b>	<b>+0</b>	<b>+0.5%</b>	<b>-1</b>	<b>-10</b>
Health Care Assistants	667	699	+32	+4.7%	+28	+45
Home Help	35	45	+10	+30.2%	-8	-8
Care, other	144	141	-3	-1.9%	-3	+16
<b>Patient &amp; Client Care</b>	<b>846</b>	<b>885</b>	<b>+39</b>	<b>+4.7%</b>	<b>+17</b>	<b>+53</b>



## CHO 6

Jul 2020 (Dec 2019 figure: 1,198)	WTE Jun 2020	WTE Jul 2020	WTE change since Jun 20	% change since Jun 20	WTE change since Dec 19	WTE change since Jul 19
<b>Overall</b>	<b>1,163</b>	<b>1,172</b>	<b>+9</b>	<b>+0.8%</b>	<b>-26</b>	<b>-3</b>
Consultants	3	3				
Medical/ Dental, other	1	1				
<b>Medical &amp; Dental</b>	<b>4</b>	<b>4</b>				
Nurse/ Midwife Manager	43	43	-0	-0.1%	-0	-2
Staff Nurse/ Staff Midwife	140	135	-5	-3.4%	-12	-16
<b>Nursing &amp; Midwifery</b>	<b>183</b>	<b>179</b>	<b>-5</b>	<b>-2.6%</b>	<b>-12</b>	<b>-17</b>
Therapy Professions	39	40	+1	+1.5%	-2	+5
Social Care	318	320	+2	+0.7%	-15	-13
Social Workers	10	10	-0	-0.3%	-2	-3
Psychologists	15	15	+0	+2.0%	+1	-1
H&SC, Other	1	1	+0	+5.2%	-1	+0
<b>Health &amp; Social Care Professionals</b>	<b>382</b>	<b>386</b>	<b>+3</b>	<b>+0.8%</b>	<b>-17</b>	<b>-11</b>
Management (VIII & above)	31	32	+1	+3.9%	+1	+0
Administrative/ Supervisory (V to VII)	56	55	-1	-2.0%	+1	+3
Clerical (III & IV)	62	65	+3	+5.3%	+11	+12
<b>Management &amp; Administrative</b>	<b>148</b>	<b>152</b>	<b>+3</b>	<b>+2.3%</b>	<b>+14</b>	<b>+15</b>
Support	39	45	+5	+13.9%	+22	+15
Maintenance/ Technical	8	7	-1	-15.4%	+0	+3
<b>General Support</b>	<b>47</b>	<b>52</b>	<b>+4</b>	<b>+9.0%</b>	<b>+22</b>	<b>+18</b>
Health Care Assistants	169	176	+7	+4.3%	-11	+5
Care, other	229	225	-4	-1.7%	-22	-13
<b>Patient &amp; Client Care</b>	<b>397</b>	<b>400</b>	<b>+3</b>	<b>+0.8%</b>	<b>-33</b>	<b>-8</b>

## CHO 7

Jul 2020 (Dec 2019 figure: 2,982)	WTE Jun 2020	WTE Jul 2020	WTE change since Jun 20	% change since Jun 20	WTE change since Dec 19	WTE change since Jul 19
<b>Overall</b>	<b>2,973</b>	<b>3,009</b>	<b>+36</b>	<b>+1.2%</b>	<b>+27</b>	<b>+61</b>
Consultants	1	1				
Registrars	3	3				+1
SHO/ Interns	8	7	-0	-6.2%	+0	+0
Medical/ Dental, other	1	1				
<b>Medical &amp; Dental</b>	<b>12</b>	<b>12</b>	<b>-0</b>	<b>-3.9%</b>	<b>+0</b>	<b>+1</b>
Nurse/ Midwife Manager	122	125	+3	+2.3%	+3	-4
Nurse/ Midwife Specialist & AN/MP	5	3	-2	-36.1%	-2	-2
Staff Nurse/ Staff Midwife	373	379	+6	+1.6%	+4	+12
<i>Pre-registration Nurse/ Midwife Intern</i>				-100.0%		-7
<i>Pre-registration Nurse Intern (COVID-19)</i>	15	15			+15	+15
Nursing/ Midwifery Student	15	15			+15	+8
Nursing/ Midwifery other	1	1				
<b>Nursing &amp; Midwifery</b>	<b>515</b>	<b>522</b>	<b>+7</b>	<b>+1.4%</b>	<b>+20</b>	<b>+13</b>
Therapy Professions	141	143	+2	+1.3%	+21	+26
Health Science/ Diagnostics	3	3				
Social Care	353	362	+9	+2.5%	+2	+6
Social Workers	33	33	+0	+0.6%	-0	+2
Psychologists	29	30	+0	+1.6%	+2	+0
Pharmacy	5	6	+0	+8.9%	+1	+2
H&SC, Other	3	2	-2	-56.6%		
<b>Health &amp; Social Care Professionals</b>	<b>568</b>	<b>578</b>	<b>+10</b>	<b>+1.7%</b>	<b>+25</b>	<b>+36</b>
Management (VIII & above)	39	38	-1	-2.6%	+6	+5
Administrative/ Supervisory (V to VII)	83	84	+1	+1.8%	+5	+4
Clerical (III & IV)	97	99	+2	+1.6%	+7	+9
<b>Management &amp; Administrative</b>	<b>219</b>	<b>221</b>	<b>+2</b>	<b>+0.9%</b>	<b>+18</b>	<b>+18</b>
Support	161	162	+2	+0.9%	-5	-6
Maintenance/ Technical	30	30	-0	-0.0%	+1	-0
<b>General Support</b>	<b>191</b>	<b>192</b>	<b>+2</b>	<b>+0.8%</b>	<b>-3</b>	<b>-6</b>
Health Care Assistants	1,073	1,091	+17	+1.6%	-22	-5
Home Help	18	18	+0	+0.4%	-1	-2
Care, other	376	374	-2	-0.4%	-11	+6
<b>Patient &amp; Client Care</b>	<b>1,468</b>	<b>1,483</b>	<b>+16</b>	<b>+1.1%</b>	<b>-35</b>	<b>-1</b>

## CHO 8

Jul 2020 (Dec 2019 figure: 2,162)	WTE Jun 2020	WTE Jul 2020	WTE change since Jun 20	% change since Jun 20	WTE change since Dec 19	WTE change since Jul 19
<b>Overall</b>	<b>2,186</b>	<b>2,153</b>	<b>-34</b>	<b>-1.5%</b>	<b>-9</b>	<b>+9</b>
Consultants	1	1				
Registrars	1	2	+1	+81.0%	-0	+1
Medical/ Dental, other	1	1				
<b>Medical &amp; Dental</b>	<b>3</b>	<b>4</b>	<b>+1</b>	<b>+27.0%</b>	<b>-0</b>	<b>+1</b>
Nurse/ Midwife Manager	117	115	-3	-2.2%	-9	-3
Nurse/ Midwife Specialist & AN/MP	7	7	-0	-1.4%	+0	+0
Staff Nurse/ Staff Midwife	317	313	-4	-1.2%	-5	-1
Public Health Nurse	1	1				
<i>Pre-registration Nurse/ Midwife Intern</i>				-100.0%	-1	-12
<i>Pre-registration Nurse Intern (COVID-19)</i>	30	30	-0	-0.6%	+30	+30
Nursing/ Midwifery Student	30	30	-0	-0.6%	+30	+18
Nursing/ Midwifery other	7	7			+2	+2
<b>Nursing &amp; Midwifery</b>	<b>480</b>	<b>473</b>	<b>-7</b>	<b>-1.4%</b>	<b>+18</b>	<b>+15</b>
Therapy Professions	94	93	-1	-1.4%	+1	+7
Health Science/ Diagnostics	2	2				
Social Care	373	366	-7	-1.9%	+5	+5
Social Workers	24	24	-0	-0.2%	+0	+1
Psychologists	22	20	-2	-8.9%	-5	-4
H&SC, Other	7	7	-0	-1.6%	-0	+0
<b>Health &amp; Social Care Professionals</b>	<b>522</b>	<b>512</b>	<b>-11</b>	<b>-2.0%</b>	<b>+2</b>	<b>+10</b>
Management (VIII & above)	10	12	+2	+16.4%	+3	+1
Administrative/ Supervisory (V to VII)	60	59	-1	-2.1%	+3	+6
Clerical (III & IV)	89	88	-1	-1.0%	+4	+4
<b>Management &amp; Administrative</b>	<b>160</b>	<b>159</b>	<b>-1</b>	<b>-0.3%</b>	<b>+10</b>	<b>+12</b>
Support	44	42	-2	-4.9%	-4	-6
Maintenance/ Technical	16	16			-0	-0
<b>General Support</b>	<b>60</b>	<b>58</b>	<b>-2</b>	<b>-3.6%</b>	<b>-4</b>	<b>-6</b>
Health Care Assistants	828	813	-15	-1.8%	-31	-18
Home Help	22	24	+2	+6.7%	+1	+0
Care, other	111	110	-1	-1.2%	-5	-5
<b>Patient &amp; Client Care</b>	<b>961</b>	<b>947</b>	<b>-15</b>	<b>-1.5%</b>	<b>-34</b>	<b>-23</b>

## CHO 9

Jul 2020 (Dec 2019 figure: 3,194)	WTE Jun 2020	WTE Jul 2020	WTE change since Jun 20	% change since Jun 20	WTE change since Dec 19	WTE change since Jul 19
<b>Overall</b>	<b>3,211</b>	<b>3,167</b>	<b>-45</b>	<b>-1.4%</b>	<b>-27</b>	<b>+68</b>
Consultants	11	11	+0	+1.3%	-1	+0
Registrars	4	3	-1	-30.9%	-3	-3
SHO/ Interns	2	2	-0	-8.5%	+2	+2
Medical/ Dental, other	7	6	-0	-5.4%		
<b>Medical &amp; Dental</b>	<b>23</b>	<b>22</b>	<b>-1</b>	<b>-6.4%</b>	<b>-3</b>	<b>-0</b>
Nurse/ Midwife Manager	192	194	+1	+0.8%	+2	+5
Nurse/ Midwife Specialist & AN/MP	9	10	+1	+10.5%	+2	+1
Staff Nurse/ Staff Midwife	500	496	-3	-0.7%	-21	+2
Pre-registration Nurse/ Midwife Intern		7	+7	-100.0%	-2	-5
Pre-registration Nurse Intern (COVID-19)	31	23	-8	-24.7%	+23	+23
Nursing/ Midwifery Student	31	30	-1	-2.8%	+22	+18
Nursing/ Midwifery other	8	8			+1	+2
<b>Nursing &amp; Midwifery</b>	<b>741</b>	<b>739</b>	<b>-2</b>	<b>-0.2%</b>	<b>+7</b>	<b>+27</b>
Therapy Professions	188	189	+0	+0.2%	+8	+15
Health Science/ Diagnostics	13	13			-2	-2
Social Care	702	694	-9	-1.3%	+5	+34
Social Workers	48	47	-1	-2.3%	+2	+2
Psychologists	59	59	+1	+1.1%	+6	+6
Pharmacy	2	2				
H&SC, Other	20	20			+1	+1
<b>Health &amp; Social Care Professionals</b>	<b>1,032</b>	<b>1,023</b>	<b>-9</b>	<b>-0.9%</b>	<b>+20</b>	<b>+55</b>
Management (VIII & above)	36	36			-2	-2
Administrative/ Supervisory (V to VII)	90	90	-0	-0.2%	+2	+5
Clerical (III & IV)	122	121	-0	-0.2%	-4	+5
<b>Management &amp; Administrative</b>	<b>247</b>	<b>247</b>	<b>-1</b>	<b>-0.2%</b>	<b>-4</b>	<b>+8</b>
Support	188	164	-23	-12.3%	-31	-10
Maintenance/ Technical	22	22			-0	-3
<b>General Support</b>	<b>210</b>	<b>186</b>	<b>-23</b>	<b>-11.0%</b>	<b>-31</b>	<b>-13</b>
Health Care Assistants	865	855	-10	-1.2%	-14	-7
Care, other	94	95	+1	+1.3%	-1	-2
<b>Patient &amp; Client Care</b>	<b>959</b>	<b>950</b>	<b>-9</b>	<b>-0.9%</b>	<b>-16</b>	<b>-10</b>

## other Community Services

Jul 2020 (Dec 2019 figure: 5)	WTE Jun 2020	WTE Jul 2020	WTE change since Jun 20	% change since Jun 20	WTE change since Dec 19	WTE change since Jul 19
<b>Overall</b>	<b>5</b>	<b>5</b>	<b>-0</b>	<b>-0.2%</b>	<b>-0</b>	
Management (VIII & above)	1	1	-0	-1.0%	-0	
Administrative/ Supervisory (V to VII)	2	2				
Clerical (III & IV)	2	2				
<b>Management &amp; Administrative</b>	<b>5</b>	<b>5</b>	<b>-0</b>	<b>-0.2%</b>	<b>-0</b>	<b>+0</b>

## Social Care Disability Services Employment by CHO & Admin : Jul 2020

Jul 2020 (Dec 2019 figure: 18,303)	WTE Jun 2020	WTE Jul 2020	WTE change since Jun 20	% change since Jun 20	WTE change since Dec 19	WTE change since Jul 19
<b>Overall</b>	<b>18,382</b>	<b>18,419</b>	<b>+37</b>	<b>+0.2%</b>	<b>+116</b>	<b>+354</b>
<b>CHO 1</b>	<b>1,526</b>	<b>1,536</b>	<b>+10</b>	<b>+0.7%</b>	<b>+37</b>	<b>+39</b>
<b>Health Service Executive</b>	<b>211</b>	<b>213</b>	<b>+2</b>	<b>+1.1%</b>	<b>+5</b>	<b>-0</b>
Bros. of Charity, West Region	1,263	1,265	+2	+0.2%	-23	+18
<b>Section 38 Voluntary Agencies</b>	<b>1,263</b>	<b>1,265</b>	<b>+2</b>	<b>+0.2%</b>	<b>-23</b>	<b>+18</b>
<b>CHO 2</b>	<b>1,474</b>	<b>1,479</b>	<b>+4</b>	<b>+0.3%</b>	<b>-18</b>	<b>+17</b>
<b>Health Service Executive</b>	<b>132</b>	<b>138</b>	<b>+7</b>	<b>+5.1%</b>	<b>+16</b>	<b>+18</b>
Bros. of Charity, Clare	336	341	+5	+1.6%	-7	+7
Bros. of Charity, Limerick	564	575	+11	+2.0%	+55	+55
Daughters of Charity, Limerick	571	556	-16	-2.8%	+12	+5
Daughters of Charity, Roscrea	289	289	+0	+0.1%	-1	-2
<b>Section 38 Voluntary Agencies</b>	<b>1,760</b>	<b>1,761</b>	<b>+1</b>	<b>+0.1%</b>	<b>+60</b>	<b>+65</b>
<b>CHO 3</b>	<b>1,891</b>	<b>1,899</b>	<b>+8</b>	<b>+0.4%</b>	<b>+76</b>	<b>+83</b>
<b>Health Service Executive</b>	<b>301</b>	<b>302</b>	<b>+1</b>	<b>+0.4%</b>	<b>+10</b>	<b>+13</b>
Bros. of Charity, Southern	735	756	+21	+2.8%	+15	-1
Cope Foundation	1,126	1,124	-1	-0.1%	+34	+15
St. John of God, Kerry	313	313	-0	-0.1%	-2	+6
<b>Section 38 Voluntary Agencies</b>	<b>2,173</b>	<b>2,193</b>	<b>+19</b>	<b>+0.9%</b>	<b>+47</b>	<b>+20</b>
<b>CHO 4</b>	<b>2,475</b>	<b>2,495</b>	<b>+21</b>	<b>+0.8%</b>	<b>+57</b>	<b>+33</b>
<b>Health Service Executive</b>	<b>371</b>	<b>373</b>	<b>+2</b>	<b>+0.6%</b>	<b>-8</b>	<b>+27</b>
Bros. of Charity, Waterford	612	636	+24	+4.0%	+6	+24
Carriglea Cairde Services	210	207	-3	-1.2%	-7	-2
St. Patrick's, Kilkenny	285	288	+3	+1.1%	+9	-1
<b>Section 38 Voluntary Agencies</b>	<b>1,107</b>	<b>1,132</b>	<b>+25</b>	<b>+2.2%</b>	<b>+8</b>	<b>+21</b>
<b>CHO 5</b>	<b>1,478</b>	<b>1,505</b>	<b>+27</b>	<b>+1.8%</b>	<b>-0</b>	<b>+48</b>
<b>Health Service Executive</b>	<b>234</b>	<b>235</b>	<b>+1</b>	<b>+0.6%</b>	<b>+2</b>	<b>+8</b>
Children's Sunshine Home	57	56	-1	-0.9%	-2	-3
St. John of God (IDS)	444	448	+4	+0.8%	-9	-3
Sunbeam House Services	428	433	+5	+1.1%	-16	-5
<b>Section 38 Voluntary Agencies</b>	<b>929</b>	<b>937</b>	<b>+8</b>	<b>+0.9%</b>	<b>-28</b>	<b>-11</b>
<b>CHO 6</b>	<b>1,163</b>	<b>1,172</b>	<b>+9</b>	<b>+0.8%</b>	<b>-26</b>	<b>-3</b>
<b>Health Service Executive</b>	<b>120</b>	<b>123</b>	<b>+3</b>	<b>+2.6%</b>	<b>+23</b>	<b>+34</b>
<b>Section 38 Voluntary Agencies</b>	<b>2,853</b>	<b>2,885</b>	<b>+33</b>	<b>+1.1%</b>	<b>+4</b>	<b>+27</b>
<b>CHO 7</b>	<b>2,973</b>	<b>3,009</b>	<b>+36</b>	<b>+1.2%</b>	<b>+27</b>	<b>+61</b>
<b>Health Service Executive</b>	<b>605</b>	<b>603</b>	<b>-2</b>	<b>-0.3%</b>	<b>-7</b>	<b>+3</b>
<b>Section 38 Voluntary Agencies</b>	<b>1,581</b>	<b>1,549</b>	<b>-32</b>	<b>-2.0%</b>	<b>-2</b>	<b>+6</b>
<b>CHO 8</b>	<b>2,186</b>	<b>2,153</b>	<b>-34</b>	<b>-1.5%</b>	<b>-9</b>	<b>+9</b>
<b>Health Service Executive</b>	<b>454</b>	<b>457</b>	<b>+3</b>	<b>+0.7%</b>	<b>+7</b>	<b>-3</b>
Central Remedial Clinic	283	283	+0	+0.0%	+5	+7
Daughters of Charity, Dublin	1,071	1,050	-21	-1.9%	+16	+44
St. Michael's House, Dublin	1,403	1,376	-27	-1.9%	-55	+21
<b>Section 38 Voluntary Agencies</b>	<b>2,757</b>	<b>2,709</b>	<b>-48</b>	<b>-1.7%</b>	<b>-34</b>	<b>+71</b>
<b>CHO 9</b>	<b>3,211</b>	<b>3,167</b>	<b>-45</b>	<b>-1.4%</b>	<b>-27</b>	<b>+68</b>

Jul 2020 (Dec 2019 figure: 18,303)	WTE Jun 2020	WTE Jul 2020	WTE change since Jun 20	% change since Jun 20	WTE change since Dec 19	WTE change since Jul 19
<b>Overall</b>	<b>18,382</b>	<b>18,419</b>	<b>+37</b>	<b>+0.2%</b>	<b>+116</b>	<b>+354</b>
<b>other Community Services</b>	<b>5</b>	<b>5</b>	<b>-0</b>	<b>-0.2%</b>	<b>-0</b>	

## Social Care Disability Services Employment by CHO Jul 2020

### Bros. of Charity, Clare

Jul 2020 (Dec 2019 figure: 348)	WTE Jun 2020	WTE Jul 2020	WTE change since Jun 20	% change since Jun 20	WTE change since Dec 19	WTE change since Jul 19
<b>Overall</b>	<b>336</b>	<b>341</b>	<b>+5</b>	<b>+1.6%</b>	<b>-7</b>	<b>+7</b>
Consultants		0	+0	-100.0%	+0	+0
<b>Medical &amp; Dental</b>		<b>0</b>	<b>+0</b>	<b>-100.0%</b>	<b>+0</b>	<b>+0</b>
Nurse/ Midwife Manager				-100.0%		
Staff Nurse/ Staff Midwife	2	2	-0	-2.1%	+0	+0
<i>Pre-registration Nurse Intern (COVID-19)</i>	1	1	-0	-11.7%	+1	+1
Nursing/ Midwifery Student	1	1	-0	-11.7%	+1	+1
<b>Nursing &amp; Midwifery</b>	<b>3</b>	<b>3</b>	<b>-0</b>	<b>-5.2%</b>	<b>+1</b>	<b>+1</b>
Social Care	79	81	+2	+2.5%	-1	-8
Social Workers	1	1			-2	-2
Psychologists	3	3				
H&SC, Other	4	4			-0	-1
<b>Health &amp; Social Care Professionals</b>	<b>86</b>	<b>88</b>	<b>+2</b>	<b>+2.3%</b>	<b>-4</b>	<b>-11</b>
Management (VIII & above)	1	1				
Administrative/ Supervisory (V to VII)	5	5	-0	-2.0%	+0	+0
Clerical (III & IV)	5	5			+1	+1
<b>Management &amp; Administrative</b>	<b>11</b>	<b>11</b>	<b>-0</b>	<b>-0.9%</b>	<b>+1</b>	<b>+1</b>
Health Care Assistants	204	208	+4	+1.8%	-4	+14
Care, other	32	31	-0	-0.9%	-1	+2
<b>Patient &amp; Client Care</b>	<b>236</b>	<b>239</b>	<b>+4</b>	<b>+1.5%</b>	<b>-5</b>	<b>+15</b>

Jul 2020 (Dec 2019 figure: 520)	WTE Jun 2020	WTE Jul 2020	WTE change since Jun 20	% change since Jun 20	WTE change since Dec 19	WTE change since Jul 19
<b>Overall</b>	<b>564</b>	<b>575</b>	<b>+11</b>	<b>+2.0%</b>	<b>+55</b>	<b>+55</b>
Consultants	1	2	+1	+50.0%	+1	-0
<b>Medical &amp; Dental</b>	<b>1</b>	<b>2</b>	<b>+1</b>	<b>+50.0%</b>	<b>+1</b>	<b>-0</b>
Nurse/ Midwife Manager	30	28	-2	-5.3%	+3	+5
Nurse/ Midwife Specialist & AN/MP	4	4			-1	+1
Staff Nurse/ Staff Midwife	88	88	+0	+0.2%	+4	+3
<b>Nursing &amp; Midwifery</b>	<b>121</b>	<b>120</b>	<b>-1</b>	<b>-1.2%</b>	<b>+6</b>	<b>+9</b>
Therapy Professions	15	15			+3	+3
Social Care	93	98	+5	+5.3%	+13	+15
Social Workers	5	4	-1	-17.2%	-1	-2
Psychologists	6	6			+0	+0
H&SC, Other	2	2	-0	-0.6%	+1	+1
<b>Health &amp; Social Care Professionals</b>	<b>120</b>	<b>124</b>	<b>+4</b>	<b>+3.4%</b>	<b>+16</b>	<b>+18</b>
Management (VIII & above)	2	2				
Administrative/ Supervisory (V to VII)	6	6	+0	+1.9%	+0	-0
Clerical (III & IV)	11	11	-0	-0.4%	-2	-2
<b>Management &amp; Administrative</b>	<b>18</b>	<b>19</b>	<b>+0</b>	<b>+0.4%</b>	<b>-2</b>	<b>-2</b>
Support	5	5	+0	+0.4%	-2	-3
Maintenance/ Technical	2	2			-0	-0
<b>General Support</b>	<b>7</b>	<b>7</b>	<b>+0</b>	<b>+0.3%</b>	<b>-2</b>	<b>-3</b>
Health Care Assistants	205	210	+5	+2.4%	+31	+26
Care, other	90	93	+3	+3.4%	+5	+8
<b>Patient &amp; Client Care</b>	<b>295</b>	<b>303</b>	<b>+8</b>	<b>+2.7%</b>	<b>+36</b>	<b>+34</b>



Jul 2020 (Dec 2019 figure: 740)	WTE Jun 2020	WTE Jul 2020	WTE change since Jun 20	% change since Jun 20	WTE change since Dec 19	WTE change since Jul 19
<b>Overall</b>	<b>735</b>	<b>756</b>	<b>+21</b>	<b>+2.8%</b>	<b>+15</b>	<b>-1</b>
Nurse/ Midwife Manager	16	15	-0	-2.9%	-0	-2
Nurse/ Midwife Specialist & AN/MP	3	4	+1	+34.0%	+1	+1
Staff Nurse/ Staff Midwife	59	56	-2	-4.2%	-3	-6
<b>Nursing &amp; Midwifery</b>	<b>77</b>	<b>75</b>	<b>-2</b>	<b>-2.5%</b>	<b>-2</b>	<b>-7</b>
Therapy Professions	45	46	+1	+1.3%	-2	-1
Social Care	126	126	-0	-0.0%	+2	+2
Social Workers	17	17			-1	+0
Psychologists	19	18	-0	-0.5%	-1	-1
<b>Health &amp; Social Care Professionals</b>	<b>207</b>	<b>207</b>	<b>+0</b>	<b>+0.2%</b>	<b>-2</b>	<b>+0</b>
Management (VIII & above)	8	8			+0	+0
Administrative/ Supervisory (V to VII)	10	10			+1	
Clerical (III & IV)	34	35	+1	+3.3%	+2	-3
<b>Management &amp; Administrative</b>	<b>53</b>	<b>54</b>	<b>+1</b>	<b>+2.1%</b>	<b>+4</b>	<b>-2</b>
Support	15	16	+1	+9.1%	+2	+1
Maintenance/ Technical	2	2				-1
<b>General Support</b>	<b>16</b>	<b>18</b>	<b>+1</b>	<b>+8.3%</b>	<b>+2</b>	<b>+0</b>
Health Care Assistants	207	222	+15	+7.1%	+15	+1
Care, other	175	180	+5	+2.9%	-1	+8
<b>Patient &amp; Client Care</b>	<b>382</b>	<b>402</b>	<b>+20</b>	<b>+5.2%</b>	<b>+14</b>	<b>+9</b>

Jul 2020 (Dec 2019 figure: 630)	WTE Jun 2020	WTE Jul 2020	WTE change since Jun 20	% change since Jun 20	WTE change since Dec 19	WTE change since Jul 19
<b>Overall</b>	<b>612</b>	<b>636</b>	<b>+24</b>	<b>+4.0%</b>	<b>+6</b>	<b>+24</b>
Consultants	1		-1	-100.0%	-1	-1
<b>Medical &amp; Dental</b>	<b>1</b>		<b>-1</b>	<b>-100.0%</b>	<b>-1</b>	<b>-1</b>
Nurse/ Midwife Manager	23	22	-1	-4.7%	-3	-2
Staff Nurse/ Staff Midwife	47	47	-0	-0.2%	-1	+7
Pre-registration Nurse/ Midwife Intern				-100.0%		-6
Pre-registration Nurse Intern (COVID-19)	8	7	-0	-1.5%	+7	+7
Nursing/ Midwifery Student	8	7	-0	-1.5%	+7	+2
<b>Nursing &amp; Midwifery</b>	<b>77</b>	<b>76</b>	<b>-1</b>	<b>-1.6%</b>	<b>+3</b>	<b>+6</b>
Therapy Professions	3	3				
Social Care	67	67	+0	+0.6%	+1	-0
Social Workers	9	9	-1	-5.5%	-1	+0
Psychologists	4	4			-0	+0
H&SC, Other	4	5	+1	+26.3%	+1	+1
<b>Health &amp; Social Care Professionals</b>	<b>86</b>	<b>87</b>	<b>+1</b>	<b>+1.0%</b>	<b>+0</b>	<b>+1</b>
Management (VIII & above)	5	5			+0	+1
Administrative/ Supervisory (V to VII)	16	16	-0	-1.4%	+3	+4
Clerical (III & IV)	24	24	+1	+3.5%	-1	-1
<b>Management &amp; Administrative</b>	<b>45</b>	<b>45</b>	<b>+1</b>	<b>+1.3%</b>	<b>+2</b>	<b>+5</b>
Support	1	1	-0	-17.5%	-0	-0
Maintenance/ Technical	3	3				
<b>General Support</b>	<b>4</b>	<b>4</b>	<b>-0</b>	<b>-5.7%</b>	<b>-0</b>	<b>-0</b>
Health Care Assistants	308	333	+25	+8.1%	+2	-2
Care, other	91	92	+0	+0.4%	+1	+15
<b>Patient &amp; Client Care</b>	<b>399</b>	<b>424</b>	<b>+25</b>	<b>+6.3%</b>	<b>+2</b>	<b>+13</b>

## Carriglea Cairde Services

Jul 2020 (Dec 2019 figure: 214)	WTE Jun 2020	WTE Jul 2020	WTE change since Jun 20	% change since Jun 20	WTE change since Dec 19	WTE change since Jul 19
<b>Overall</b>	<b>210</b>	<b>207</b>	<b>-3</b>	<b>-1.2%</b>	<b>-7</b>	<b>-2</b>
Nurse/ Midwife Manager	13	13	+0	+0.4%	+1	+0
Staff Nurse/ Staff Midwife	25	24	-0	-1.8%	-2	+0
<i>Pre-registration Nurse/ Midwife Intern</i>				-100.0%		-2
<i>Post-registration Nurse/ Midwife Student</i>	4	4	-0	-1.7%	+4	+4
Nursing/ Midwifery Student	4	4	-0	-1.7%	+4	+2
<b>Nursing &amp; Midwifery</b>	<b>41</b>	<b>41</b>	<b>-0</b>	<b>-1.1%</b>	<b>+3</b>	<b>+2</b>
Social Care	32	32	-1	-2.3%	-5	-3
<b>Health &amp; Social Care Professionals</b>	<b>32</b>	<b>32</b>	<b>-1</b>	<b>-2.3%</b>	<b>-5</b>	<b>-3</b>
Management (VIII & above)	2	2				
Administrative/ Supervisory (V to VII)	3	3			+0	+0
Clerical (III & IV)	6	6	+0	+4.6%	-1	-0
<b>Management &amp; Administrative</b>	<b>11</b>	<b>11</b>	<b>+0</b>	<b>+2.5%</b>	<b>-0</b>	<b>-0</b>
Support	7	7	+0	+1.0%	+3	+3
Maintenance/ Technical	1	1				-1
<b>General Support</b>	<b>9</b>	<b>9</b>	<b>+0</b>	<b>+0.8%</b>	<b>+3</b>	<b>+2</b>
Health Care Assistants	72	73	+1	+1.4%	-1	+0
Care, other	44	42	-3	-6.3%	-7	-3
<b>Patient &amp; Client Care</b>	<b>116</b>	<b>114</b>	<b>-2</b>	<b>-1.5%</b>	<b>-8</b>	<b>-3</b>

## Central Remedial Clinic

Jul 2020 (Dec 2019 figure: 278)	WTE Jun 2020	WTE Jul 2020	WTE change since Jun 20	% change since Jun 20	WTE change since Dec 19	WTE change since Jul 19
<b>Overall</b>	<b>283</b>	<b>283</b>	<b>+0</b>	<b>+0.0%</b>	<b>+5</b>	<b>+7</b>
Consultants	1	1				
Medical/ Dental, other	0	0				
<b>Medical &amp; Dental</b>	<b>2</b>	<b>2</b>				
Nurse/ Midwife Manager	2	2				
Nurse/ Midwife Specialist & AN/MP	1	2	+1	+200.0%	+1	
Staff Nurse/ Staff Midwife	4	4			+1	+1
Nursing/ Midwifery other	1	1			+1	+1
<b>Nursing &amp; Midwifery</b>	<b>8</b>	<b>9</b>	<b>+1</b>	<b>+12.2%</b>	<b>+3</b>	<b>+2</b>
Therapy Professions	78	77	-1	-1.3%	-1	+2
Health Science/ Diagnostics	13	13			-2	-2
Social Workers	9	9			+1	+1
Psychologists	11	11			+0	+0
<b>Health &amp; Social Care Professionals</b>	<b>110</b>	<b>109</b>	<b>-1</b>	<b>-0.9%</b>	<b>-2</b>	<b>+2</b>
Management (VIII & above)	5	5			-2	-2
Administrative/ Supervisory (V to VII)	15	15				+1
Clerical (III & IV)	33	33			+0	+2
<b>Management &amp; Administrative</b>	<b>53</b>	<b>53</b>			<b>-2</b>	<b>+1</b>
Support	14	14			+0	+0
Maintenance/ Technical	1	1				
<b>General Support</b>	<b>15</b>	<b>15</b>			<b>+0</b>	<b>+0</b>
Health Care Assistants	57	56	-1	-1.6%	+5	+0
Care, other	38	39	+1	+2.7%	+0	+1
<b>Patient &amp; Client Care</b>	<b>94</b>	<b>94</b>	<b>+0</b>	<b>+0.1%</b>	<b>+5</b>	<b>+2</b>

# Cheeverstown House

Jul 2020 (Dec 2019 figure: 396)	WTE Jun 2020	WTE Jul 2020	WTE change since Jun 20	% change since Jun 20	WTE change since Dec 19	WTE change since Jul 19
<b>Overall</b>	<b>393</b>	<b>395</b>	<b>+1</b>	<b>+0.3%</b>	<b>-2</b>	<b>-6</b>
Consultants	0	0				
Medical/ Dental, other	1	1				
<b>Medical &amp; Dental</b>	<b>1</b>	<b>1</b>				
Nurse/ Midwife Manager	28	30	+2	+7.3%	+4	+1
Nurse/ Midwife Specialist & AN/MP	2	2				
Staff Nurse/ Staff Midwife	103	104	+1	+1.0%	-3	-3
<b>Nursing &amp; Midwifery</b>	<b>132</b>	<b>135</b>	<b>+3</b>	<b>+2.3%</b>	<b>+0</b>	<b>-2</b>
Therapy Professions	12	11	-1	-8.2%	-3	-2
Social Care	35	33	-2	-5.7%	-2	-3
Social Workers	5	5			-1	-1
Psychologists	5	5			+1	+1
Pharmacy	0	0			-0	-0
H&SC, Other	2	2				
<b>Health &amp; Social Care Professionals</b>	<b>59</b>	<b>56</b>	<b>-3</b>	<b>-5.1%</b>	<b>-4</b>	<b>-6</b>
Management (VIII & above)	2	2				
Administrative/ Supervisory (V to VII)	15	15				+0
Clerical (III & IV)	12	12			+1	+1
<b>Management &amp; Administrative</b>	<b>29</b>	<b>29</b>			<b>+1</b>	<b>+1</b>
Support	27	27			-0	+2
Maintenance/ Technical	4	4				
<b>General Support</b>	<b>30</b>	<b>30</b>				<b>+2</b>
Health Care Assistants	131	132	+1	+0.9%	+2	-1
Care, other	12	12			-0	-1
<b>Patient &amp; Client Care</b>	<b>142</b>	<b>143</b>	<b>+1</b>	<b>+0.8%</b>	<b>+1</b>	<b>-2</b>

## Children's Sunshine Home

Jul 2020 (Dec 2019 figure: 58)	WTE Jun 2020	WTE Jul 2020	WTE change since Jun 20	% change since Jun 20	WTE change since Dec 19	WTE change since Jul 19
<b>Overall</b>	<b>57</b>	<b>56</b>	<b>-1</b>	<b>-0.9%</b>	<b>-2</b>	<b>-3</b>
Nurse/ Midwife Manager	8	8			+1	
Staff Nurse/ Staff Midwife	19	19			-2	-2
<b>Nursing &amp; Midwifery</b>	<b>27</b>	<b>27</b>			<b>-1</b>	<b>-2</b>
Therapy Professions	2	1	-1	-28.6%	-1	-0
Social Workers	1	1				
<b>Health &amp; Social Care Professionals</b>	<b>3</b>	<b>2</b>	<b>-1</b>	<b>-19.7%</b>	<b>-1</b>	<b>-0</b>
Management (VIII & above)	2	2			-1	-1
Administrative/ Supervisory (V to VII)	4	4				+1
<i>General Administrative (III &amp; IV)</i>	1	1			+1	+1
Clerical (III & IV)	1	1				+1
<b>Management &amp; Administrative</b>	<b>7</b>	<b>7</b>			<b>-1</b>	<b>+1</b>
Support	3	3				-1
<b>General Support</b>	<b>3</b>	<b>3</b>				<b>-1</b>
Health Care Assistants	14	14			-0	-0
Care, other	3	3			-0	-0
<b>Patient &amp; Client Care</b>	<b>17</b>	<b>17</b>			<b>-0</b>	<b>-0</b>

Jul 2020 (Dec 2019 figure: 1,091)	WTE Jun 2020	WTE Jul 2020	WTE change since Jun 20	% change since Jun 20	WTE change since Dec 19	WTE change since Jul 19
<b>Overall</b>	<b>1,126</b>	<b>1,124</b>	<b>-1</b>	<b>-0.1%</b>	<b>+34</b>	<b>+15</b>
Nurse/ Midwife Manager	41	41				
Nurse/ Midwife Specialist & AN/MP	10	10				
Staff Nurse/ Staff Midwife	168	168			-1	+0
Pre-registration Nurse/ Midwife Intern				-100.0%	-8	-9
Pre-registration Nurse Intern (COVID-19)	25	25			+25	+25
Nursing/ Midwifery Student	25	25			+19	+17
Nursing/ Midwifery other	1	1				
<b>Nursing &amp; Midwifery</b>	<b>245</b>	<b>245</b>	<b>+0</b>	<b>+0.0%</b>	<b>+18</b>	<b>+17</b>
Therapy Professions	37	37			-1	+0
Social Care	34	34			+2	-0
Social Workers	9	9				
Psychologists	11	11			+1	+1
H&SC, Other	3	3				
<b>Health &amp; Social Care Professionals</b>	<b>93</b>	<b>93</b>			<b>+3</b>	<b>+1</b>
Management (VIII & above)	7	7			+1	+1
Administrative/ Supervisory (V to VII)	19	19				
Clerical (III & IV)	25	25			+2	+2
<b>Management &amp; Administrative</b>	<b>51</b>	<b>51</b>			<b>+3</b>	<b>+3</b>
Support	77	77			+0	+6
Maintenance/ Technical	6	6				
<b>General Support</b>	<b>83</b>	<b>83</b>				<b>+6</b>
Health Care Assistants	576	575	-1	-0.2%	+11	-18
Care, other	78	78			-1	+6
<b>Patient &amp; Client Care</b>	<b>654</b>	<b>653</b>	<b>-1</b>	<b>-0.2%</b>	<b>+10</b>	<b>-12</b>

Jul 2020 (Dec 2019 figure: 1,034)	WTE Jun 2020	WTE Jul 2020	WTE change since Jun 20	% change since Jun 20	WTE change since Dec 19	WTE change since Jul 19
<b>Overall</b>	<b>1,071</b>	<b>1,050</b>	<b>-21</b>	<b>-1.9%</b>	<b>+16</b>	<b>+44</b>
Consultants	2	2			+1	+1
Medical/ Dental, other	2	2				
<b>Medical &amp; Dental</b>	<b>4</b>	<b>4</b>			<b>+1</b>	<b>+1</b>
Nurse/ Midwife Manager	62	62			-0	+2
Nurse/ Midwife Specialist & AN/MP	9	9			+1	+1
Staff Nurse/ Staff Midwife	185	186	+0	+0.1%	-1	+4
<i>Pre-registration Nurse/ Midwife Intern</i>				-100.0%	-8	-8
<i>Pre-registration Nurse Intern (COVID-19)</i>	15	15			+15	+15
Nursing/ Midwifery Student	15	15			+8	+8
Nursing/ Midwifery other	4	4				+1
<b>Nursing &amp; Midwifery</b>	<b>275</b>	<b>276</b>	<b>+0</b>	<b>+0.1%</b>	<b>+8</b>	<b>+16</b>
Therapy Professions	34	34			+1	+2
Social Care	168	165	-3	-1.8%	+2	+15
Social Workers	11	11			+1	+1
Psychologists	10	10			+3	+2
Pharmacy	2	2				
H&SC, Other	5	5			+1	+1
<b>Health &amp; Social Care Professionals</b>	<b>229</b>	<b>226</b>	<b>-3</b>	<b>-1.3%</b>	<b>+7</b>	<b>+20</b>
Management (VIII & above)	7	7			+1	
Administrative/ Supervisory (V to VII)	27	27	-0	-0.0%	+2	-0
Clerical (III & IV)	32	32			-1	-1
<b>Management &amp; Administrative</b>	<b>66</b>	<b>66</b>			<b>+2</b>	<b>-1</b>
Support	78	79	+1	+0.6%	-0	+1
Maintenance/ Technical	8	8				-2
<b>General Support</b>	<b>86</b>	<b>86</b>	<b>+1</b>	<b>+0.6%</b>	<b>-0</b>	<b>-1</b>
Health Care Assistants	380	361	-18	-4.8%	-0	+13
Care, other	31	31	+0	+0.0%	-1	-3
<b>Patient &amp; Client Care</b>	<b>410</b>	<b>392</b>	<b>-18</b>	<b>-4.5%</b>	<b>-1</b>	<b>+10</b>



Jul 2020 (Dec 2019 figure: 543)	WTE Jun 2020	WTE Jul 2020	WTE change since Jun 20	% change since Jun 20	WTE change since Dec 19	WTE change since Jul 19
<b>Overall</b>	<b>571</b>	<b>556</b>	<b>-16</b>	<b>-2.8%</b>	<b>+12</b>	<b>+5</b>
Medical/ Dental, other	1	1				
<b>Medical &amp; Dental</b>	<b>1</b>	<b>1</b>				
Nurse/ Midwife Manager	35	35				+2
Nurse/ Midwife Specialist & AN/MP	7	7			-1	-1
Staff Nurse/ Staff Midwife	144	143	-1	-0.7%	-0	-5
<i>Pre-registration Nurse/ Midwife Intern</i>				-100.0%	-7	-6
<i>Pre-registration Nurse Intern (COVID-19)</i>	23	23			+23	+23
Nursing/ Midwifery Student	23	23			+12	+17
Nursing/ Midwifery other	3	3				
<b>Nursing &amp; Midwifery</b>	<b>212</b>	<b>212</b>	<b>-1</b>	<b>-0.4%</b>	<b>+11</b>	<b>+14</b>
Therapy Professions	15	15				
Social Care	55	56	+1	+1.0%	+2	+0
Social Workers	5	5			+0	+0
Psychologists	7	7			+4	+3
H&SC, Other	6	6				
<b>Health &amp; Social Care Professionals</b>	<b>88</b>	<b>89</b>	<b>+1</b>	<b>+0.6%</b>	<b>+6</b>	<b>+3</b>
Management (VIII & above)	2	2				
Administrative/ Supervisory (V to VII)	10	10				
Clerical (III & IV)	14	14			-1	-1
<b>Management &amp; Administrative</b>	<b>26</b>	<b>26</b>			<b>-1</b>	<b>-1</b>
Support	44	44			+3	+1
Maintenance/ Technical	4	4				
<b>General Support</b>	<b>49</b>	<b>49</b>			<b>+3</b>	<b>+1</b>
Health Care Assistants	173	157	-15	-8.9%	-8	-14
Care, other	22	22			+1	+1
<b>Patient &amp; Client Care</b>	<b>195</b>	<b>180</b>	<b>-15</b>	<b>-7.9%</b>	<b>-7</b>	<b>-13</b>

## Daughters of Charity, Roscrea

Jul 2020 (Dec 2019 figure: 290)	WTE Jun 2020	WTE Jul 2020	WTE change since Jun 20	% change since Jun 20	WTE change since Dec 19	WTE change since Jul 19
<b>Overall</b>	<b>289</b>	<b>289</b>	<b>+0</b>	<b>+0.1%</b>	<b>-1</b>	<b>-2</b>
Nurse/ Midwife Manager	16	16				-0
Staff Nurse/ Staff Midwife	18	18				-1
Nursing/ Midwifery other	1	1				
<b>Nursing &amp; Midwifery</b>	<b>35</b>	<b>35</b>				<b>-1</b>
Therapy Professions	2	2			+0	+1
Social Care	24	24			+5	+4
Social Workers	1	1				
Psychologists	1	1				
<b>Health &amp; Social Care Professionals</b>	<b>28</b>	<b>28</b>			<b>+5</b>	<b>+4</b>
Management (VIII & above)	1	1				
Administrative/ Supervisory (V to VII)	7	7				
Clerical (III & IV)	7	7			+0	
<b>Management &amp; Administrative</b>	<b>15</b>	<b>15</b>			<b>+0</b>	
Support	4	4				-1
Maintenance/ Technical	5	5			-1	-1
<b>General Support</b>	<b>9</b>	<b>9</b>			<b>-1</b>	<b>-2</b>
Health Care Assistants	201	201	+0	+0.1%	-2	+0
Care, other	2	2			-4	-4
<b>Patient &amp; Client Care</b>	<b>202</b>	<b>203</b>	<b>+0</b>	<b>+0.1%</b>	<b>-5</b>	<b>-4</b>

## Kare, Newbridge, Co Kildare

Jul 2020 (Dec 2019 figure: 360)	WTE Jun 2020	WTE Jul 2020	WTE change since Jun 20	% change since Jun 20	WTE change since Dec 19	WTE change since Jul 19
<b>Overall</b>	<b>345</b>	<b>335</b>	<b>-10</b>	<b>-3.0%</b>	<b>-25</b>	<b>-7</b>
Nurse/ Midwife Manager	10	8	-2	-18.7%	-4	-4
Staff Nurse/ Staff Midwife	22	22	+0	+0.3%	-0	+0
<b>Nursing &amp; Midwifery</b>	<b>32</b>	<b>30</b>	<b>-2</b>	<b>-5.7%</b>	<b>-4</b>	<b>-4</b>
Therapy Professions	13	13			-2	-1
Social Care	58	59	+1	+2.0%	-2	-1
Social Workers	4	4				-0
Psychologists	5	5			+1	+2
<b>Health &amp; Social Care Professionals</b>	<b>80</b>	<b>81</b>	<b>+1</b>	<b>+1.5%</b>	<b>-3</b>	<b>-1</b>
Management (VIII & above)	6	5	-1	-16.7%	-1	-1
Administrative/ Supervisory (V to VII)	13	13	+0	+0.5%	+1	+1
Clerical (III & IV)	14	14			+2	+3
<b>Management &amp; Administrative</b>	<b>32</b>	<b>31</b>	<b>-1</b>	<b>-2.9%</b>	<b>+2</b>	<b>+3</b>
Support	1	1			-0	+0
<b>General Support</b>	<b>1</b>	<b>1</b>			<b>-0</b>	<b>+0</b>
Health Care Assistants	90	84	-6	-6.6%	-16	-15
Care, other	109	106	-3	-2.5%	-3	+10
<b>Patient &amp; Client Care</b>	<b>199</b>	<b>190</b>	<b>-9</b>	<b>-4.4%</b>	<b>-20</b>	<b>-6</b>

### Muiriosa Foundation, Laois/Offaly

Jul 2020 (Dec 2019 figure: 302)	WTE Jun 2020	WTE Jul 2020	WTE change since Jun 20	% change since Jun 20	WTE change since Dec 19	WTE change since Jul 19
<b>Overall</b>	<b>295</b>	<b>291</b>	<b>-4</b>	<b>-1.5%</b>	<b>-11</b>	<b>-9</b>
Nurse/ Midwife Manager	16	16	-0	-0.1%	-0	-0
Staff Nurse/ Staff Midwife	28	27	-1	-2.8%	+1	-1
<b>Nursing &amp; Midwifery</b>	<b>44</b>	<b>43</b>	<b>-1</b>	<b>-1.8%</b>	<b>+1</b>	<b>-2</b>
Social Care	99	97	-2	-2.1%	+3	+1
Social Workers	4	4			-0	
Psychologists	1	1				
H&SC, Other	1	1				-0
<b>Health &amp; Social Care Professionals</b>	<b>105</b>	<b>103</b>	<b>-2</b>	<b>-2.0%</b>	<b>+2</b>	<b>+1</b>
Management (VIII & above)	1	1				
Administrative/ Supervisory (V to VII)	5	5			-0	-0
Clerical (III & IV)	11	11	+0	+0.2%	-0	-1
<b>Management &amp; Administrative</b>	<b>17</b>	<b>17</b>	<b>+0</b>	<b>+0.1%</b>	<b>-0</b>	<b>-1</b>
Support	1	1	+0	+0.8%	+0	+0
Maintenance/ Technical	2	2				
<b>General Support</b>	<b>3</b>	<b>3</b>	<b>+0</b>	<b>+0.3%</b>	<b>+0</b>	<b>+0</b>
Health Care Assistants	98	96	-2	-2.4%	-13	-6
Care, other	28	29	+1	+3.0%	-1	-1
<b>Patient &amp; Client Care</b>	<b>126</b>	<b>125</b>	<b>-2</b>	<b>-1.2%</b>	<b>-14</b>	<b>-7</b>

### Muiriosa Foundation, Longford/Westmeath

Jul 2020 (Dec 2019 figure: 270)	WTE Jun 2020	WTE Jul 2020	WTE change since Jun 20	% change since Jun 20	WTE change since Dec 19	WTE change since Jul 19
<b>Overall</b>	<b>275</b>	<b>269</b>	<b>-6</b>	<b>-2.0%</b>	<b>-1</b>	<b>-1</b>
Nurse/ Midwife Manager	9	10	+0	+0.3%	+0	+0
Staff Nurse/ Staff Midwife	5	5	-0	-3.1%	-1	-2
<b>Nursing &amp; Midwifery</b>	<b>14</b>	<b>14</b>	<b>-0</b>	<b>-0.8%</b>	<b>-1</b>	<b>-2</b>
Therapy Professions	3	3				
Social Care	98	96	-2	-1.9%	+3	-2
Social Workers	4	4			+1	+2
Psychologists	2	2	-0	-1.0%	+0	-0
H&SC, Other	3	3	+0	+1.6%	-0	-0
<b>Health &amp; Social Care Professionals</b>	<b>110</b>	<b>108</b>	<b>-2</b>	<b>-1.7%</b>	<b>+3</b>	<b>-0</b>
Administrative/ Supervisory (V to VII)	5	5	+0	+1.0%	+1	+2
Clerical (III & IV)	10	10	-0	-0.5%	-0	+1
<b>Management &amp; Administrative</b>	<b>15</b>	<b>15</b>	<b>+0</b>	<b>+0.0%</b>	<b>+1</b>	<b>+3</b>
Support	1	1				
Maintenance/ Technical	3	3				
<b>General Support</b>	<b>4</b>	<b>4</b>				
Health Care Assistants	115	112	-3	-2.8%	-3	+0
Care, other	17	17	-0	-1.6%	-1	-2
<b>Patient &amp; Client Care</b>	<b>132</b>	<b>129</b>	<b>-4</b>	<b>-2.7%</b>	<b>-4</b>	<b>-2</b>

Jul 2020 (Dec 2019 figure: 334)	WTE Jun 2020	WTE Jul 2020	WTE change since Jun 20	% change since Jun 20	WTE change since Dec 19	WTE change since Jul 19
<b>Overall</b>	<b>355</b>	<b>344</b>	<b>-10</b>	<b>-2.9%</b>	<b>+11</b>	<b>+9</b>
Nurse/ Midwife Manager	16	14	-2	-13.6%	-4	-5
Nurse/ Midwife Specialist & AN/MP	1	1	-0	-6.1%		
Staff Nurse/ Staff Midwife	25	23	-1	-4.2%	-0	-2
Pre-registration Nurse/ Midwife Intern				-100.0%		-2
Pre-registration Nurse Intern (COVID-19)	9	9	+0	+0.7%	+9	+9
Nursing/ Midwifery Student	9	9	+0	+0.7%	+9	+7
Nursing/ Midwifery other	7	7	+0	+0.0%	+2	+2
<b>Nursing &amp; Midwifery</b>	<b>58</b>	<b>55</b>	<b>-3</b>	<b>-5.7%</b>	<b>+6</b>	<b>+2</b>
Therapy Professions	8	7	-0	-2.8%	-1	-1
Social Care	94	92	-2	-1.7%	+3	+7
Social Workers	2	2				
Psychologists	2	2			-0	
H&SC, Other	3	3				+1
<b>Health &amp; Social Care Professionals</b>	<b>108</b>	<b>106</b>	<b>-2</b>	<b>-1.7%</b>	<b>+2</b>	<b>+7</b>
Management (VIII & above)	3	5	+2	+66.7%	+2	+2
Administrative/ Supervisory (V to VII)	14	14			+0	+0
Clerical (III & IV)	14	14	+0	+0.6%	+1	-0
<b>Management &amp; Administrative</b>	<b>31</b>	<b>33</b>	<b>+2</b>	<b>+6.8%</b>	<b>+3</b>	<b>+2</b>
Support	14	14	-0	-2.9%	-2	-3
Maintenance/ Technical	5	5				
<b>General Support</b>	<b>19</b>	<b>19</b>	<b>-0</b>	<b>-2.2%</b>	<b>-2</b>	<b>-3</b>
Health Care Assistants	131	124	-7	-5.2%	+1	+3
Care, other	8	8	-0	-1.8%	-0	-2
<b>Patient &amp; Client Care</b>	<b>138</b>	<b>132</b>	<b>-7</b>	<b>-5.0%</b>	<b>+1</b>	<b>+2</b>

# Peamount Hospital (Newcastle)

Jul 2020 (Dec 2019 figure: 486)	WTE Jun 2020	WTE Jul 2020	WTE change since Jun 20	% change since Jun 20	WTE change since Dec 19	WTE change since Jul 19
<b>Overall</b>	<b>510</b>	<b>526</b>	<b>+16</b>	<b>+3.1%</b>	<b>+39</b>	<b>+36</b>
Registrars	2	2				+1
SHO/ Interns	8	7	-0	-6.2%	+0	+0
<b>Medical &amp; Dental</b>	<b>10</b>	<b>9</b>	<b>-0</b>	<b>-4.9%</b>	<b>+0</b>	<b>+1</b>
Nurse/ Midwife Manager	27	30	+4	+14.7%	+4	+4
Nurse/ Midwife Specialist & AN/MP	2		-2	-100.0%	-2	-2
Staff Nurse/ Staff Midwife	87	90	+4	+4.1%	+8	+6
<b>Nursing &amp; Midwifery</b>	<b>115</b>	<b>120</b>	<b>+6</b>	<b>+4.9%</b>	<b>+10</b>	<b>+8</b>
Therapy Professions	39	39	+0	+0.2%	+10	+12
Health Science/ Diagnostics	3	3				
Social Care	5	5			+3	+2
Social Workers	6	6			+1	+1
Pharmacy	5	5	+0	+9.5%	+1	+2
<b>Health &amp; Social Care Professionals</b>	<b>58</b>	<b>59</b>	<b>+1</b>	<b>+0.9%</b>	<b>+15</b>	<b>+17</b>
Management (VIII & above)	4	4				
Administrative/ Supervisory (V to VII)	18	18	+0	+1.0%	+4	+2
Clerical (III & IV)	18	18	+0	+1.3%	-2	-2
<b>Management &amp; Administrative</b>	<b>39</b>	<b>40</b>	<b>+0</b>	<b>+1.0%</b>	<b>+2</b>	<b>-0</b>
Support	46	47	+1	+2.7%	+0	-1
Maintenance/ Technical	9	9			+2	+1
<b>General Support</b>	<b>55</b>	<b>56</b>	<b>+1</b>	<b>+2.3%</b>	<b>+2</b>	<b>-1</b>
Health Care Assistants	229	238	+9	+3.8%	+10	+11
Care, other	3	3			-0	+0
<b>Patient &amp; Client Care</b>	<b>233</b>	<b>241</b>	<b>+9</b>	<b>+3.7%</b>	<b>+10</b>	<b>+11</b>

Stewart's Hospital, (Palmerstown)

Jul 2020 (Dec 2019 figure: 852)	WTE Jun 2020	WTE Jul 2020	WTE change since Jun 20	% change since Jun 20	WTE change since Dec 19	WTE change since Jul 19
<b>Overall</b>	<b>866</b>	<b>863</b>	<b>-4</b>	<b>-0.4%</b>	<b>+11</b>	<b>-14</b>
Consultants	0	0				
Registrars				-100.0%		
<b>Medical &amp; Dental</b>	<b>0</b>	<b>0</b>				
Nurse/ Midwife Manager	33	32	-1	-3.1%	-4	-6
Staff Nurse/ Staff Midwife	74	74			+1	+0
<i>Pre-registration Nurse/ Midwife Intern</i>				-100.0%		-7
<i>Pre-registration Nurse Intern (COVID-19)</i>	15	15			+15	+15
Nursing/ Midwifery Student	15	15			+15	+8
Nursing/ Midwifery other	1	1				
<b>Nursing &amp; Midwifery</b>	<b>122</b>	<b>121</b>	<b>-1</b>	<b>-0.8%</b>	<b>+12</b>	<b>+2</b>
Therapy Professions	15	14	-1	-3.4%	-2	-2
Social Care	13	13			+3	+2
Social Workers	7	6	-1	-7.4%	+1	+1
Psychologists	4	4			-1	-1
<b>Health &amp; Social Care Professionals</b>	<b>38</b>	<b>37</b>	<b>-1</b>	<b>-2.6%</b>	<b>+2</b>	<b>+0</b>
Management (VIII & above)	11	11				-1
Administrative/ Supervisory (V to VII)	17	17			+3	-1
Clerical (III & IV)	23	22	-1	-2.4%	-1	-3
<b>Management &amp; Administrative</b>	<b>51</b>	<b>50</b>	<b>-1</b>	<b>-1.1%</b>	<b>+2</b>	<b>-5</b>
Support	57	57	+0	+0.0%	+0	-2
Maintenance/ Technical	4	4			-1	-2
<b>General Support</b>	<b>61</b>	<b>61</b>			<b>-1</b>	<b>-4</b>
Health Care Assistants	481	479	-2	-0.4%	-2	-2
Care, other	113	114	+1	+0.9%	-2	-6
<b>Patient &amp; Client Care</b>	<b>594</b>	<b>593</b>	<b>-1</b>	<b>-0.2%</b>	<b>-4</b>	<b>-7</b>

Jul 2020 (Dec 2019 figure: 647)	WTE Jun 2020	WTE Jul 2020	WTE change since Jun 20	% change since Jun 20	WTE change since Dec 19	WTE change since Jul 19
<b>Overall</b>	<b>657</b>	<b>645</b>	<b>-12</b>	<b>-1.8%</b>	<b>-1</b>	<b>+7</b>
Registrars	1	1				
<b>Medical &amp; Dental</b>	<b>1</b>	<b>1</b>				
Nurse/ Midwife Manager	44	45	+0	+0.9%	+1	+4
Nurse/ Midwife Specialist & AN/MP	4	4	-0	-0.3%		
Staff Nurse/ Staff Midwife	148	145	-3	-2.0%	-8	+2
<i>Pre-registration Nurse/ Midwife Intern</i>				-100.0%	-1	-10
<i>Pre-registration Nurse Intern (COVID-19)</i>	21	21	-0	-1.1%	+21	+21
Nursing/ Midwifery Student	21	21	-0	-1.1%	+21	+11
<b>Nursing &amp; Midwifery</b>	<b>217</b>	<b>215</b>	<b>-3</b>	<b>-1.3%</b>	<b>+15</b>	<b>+18</b>
Therapy Professions	3	3				
Social Care	78	76	-2	-2.6%	-3	+0
Social Workers	2	2			-0	-0
Psychologists	1	1				
<b>Health &amp; Social Care Professionals</b>	<b>83</b>	<b>81</b>	<b>-2</b>	<b>-2.4%</b>	<b>-3</b>	<b>+0</b>
Management (VIII & above)	1	1			-0	-1
Administrative/ Supervisory (V to VII)	6	6			-0	+1
Clerical (III & IV)	12	12	-0	-1.7%	+0	+1
<b>Management &amp; Administrative</b>	<b>19</b>	<b>18</b>	<b>-0</b>	<b>-1.1%</b>	<b>+0</b>	<b>+0</b>
Support	22	21	-2	-8.1%	-3	-3
Maintenance/ Technical	3	3	-0	-0.0%	-0	-0
<b>General Support</b>	<b>25</b>	<b>23</b>	<b>-2</b>	<b>-7.2%</b>	<b>-3</b>	<b>-3</b>
Health Care Assistants	277	273	-4	-1.3%	-8	-5
Care, other	35	34	-1	-3.3%	-3	-3
<b>Patient &amp; Client Care</b>	<b>311</b>	<b>306</b>	<b>-5</b>	<b>-1.6%</b>	<b>-11</b>	<b>-8</b>

## St. John of God (IDS)

Jul 2020 (Dec 2019 figure: 456)	WTE Jun 2020	WTE Jul 2020	WTE change since Jun 20	% change since Jun 20	WTE change since Dec 19	WTE change since Jul 19
<b>Overall</b>	<b>444</b>	<b>448</b>	<b>+4</b>	<b>+0.8%</b>	<b>-9</b>	<b>-3</b>
<b>Medical &amp; Dental</b>	<b>1</b>	<b>1</b>				
Nurse/ Midwife Manager	8	8			+0	-1
Staff Nurse/ Staff Midwife	45	45	-0	-0.1%	-1	-2
<b>Nursing &amp; Midwifery</b>	<b>53</b>	<b>53</b>	<b>-0</b>	<b>-0.1%</b>	<b>-1</b>	<b>-3</b>
Therapy Professions	10	11	+0	+0.8%	-2	-2
Social Care	150	148	-2	-1.0%	+2	+2
Social Workers	3	3			-1	
Psychologists	6	6	-0	-3.1%	+1	+0
<b>Health &amp; Social Care Professionals</b>	<b>170</b>	<b>168</b>	<b>-2</b>	<b>-1.0%</b>	<b>+1</b>	<b>+1</b>
Management (VIII & above)	15	15	+0	+1.4%	+0	-1
Administrative/ Supervisory (V to VII)	26	26	+0	+0.2%	-2	-1
Clerical (III & IV)	19	19	+0	+0.3%	-1	+1
<b>Management &amp; Administrative</b>	<b>59</b>	<b>59</b>	<b>+0</b>	<b>+0.5%</b>	<b>-3</b>	<b>-1</b>
Support	12	12	+0	+3.2%	-0	+0
Maintenance/ Technical	5	5			+0	+1
<b>General Support</b>	<b>17</b>	<b>17</b>	<b>+0</b>	<b>+2.2%</b>	<b>+0</b>	<b>+1</b>
Health Care Assistants	16	16	+1	+4.2%	-3	+0
Care, other	129	133	+4	+3.2%	-3	-1
<b>Patient &amp; Client Care</b>	<b>145</b>	<b>149</b>	<b>+5</b>	<b>+3.3%</b>	<b>-6</b>	<b>-1</b>

## St. John of God, Kerry

Jul 2020 (Dec 2019 figure: 315)	WTE Jun 2020	WTE Jul 2020	WTE change since Jun 20	% change since Jun 20	WTE change since Dec 19	WTE change since Jul 19
<b>Overall</b>	<b>313</b>	<b>313</b>	<b>-0</b>	<b>-0.1%</b>	<b>-2</b>	<b>+6</b>
Nurse/ Midwife Manager	15	15	+0	+2.2%	-1	-0
Staff Nurse/ Staff Midwife	48	47	-0	-0.3%	-1	-4
<b>Nursing &amp; Midwifery</b>	<b>62</b>	<b>63</b>	<b>+0</b>	<b>+0.3%</b>	<b>-2</b>	<b>-4</b>
Therapy Professions	3	3	-0	-1.2%	-0	-0
Social Care	44	44	+0	+0.2%	-1	+2
Social Workers	1	1	-0	-32.0%	-0	-0
Psychologists	1	1			-1	-1
<b>Health &amp; Social Care Professionals</b>	<b>49</b>	<b>49</b>	<b>-0</b>	<b>-0.5%</b>	<b>-3</b>	<b>+1</b>
Management (VIII & above)	1	1				+1
Administrative/ Supervisory (V to VII)	7	7	-0	-0.8%	-0	-0
Clerical (III & IV)	10	10	-0	-3.2%	-0	-0
<b>Management &amp; Administrative</b>	<b>18</b>	<b>18</b>	<b>-0</b>	<b>-2.0%</b>	<b>-0</b>	<b>+1</b>
<b>General Support</b>	<b>29</b>	<b>29</b>	<b>+0</b>	<b>+0.2%</b>	<b>-1</b>	<b>+0</b>
Health Care Assistants	113	113	+1	+0.6%	+8	+10
Care, other	42	41	-1	-1.5%	-5	-1
<b>Patient &amp; Client Care</b>	<b>154</b>	<b>155</b>	<b>+0</b>	<b>+0.1%</b>	<b>+3</b>	<b>+9</b>



# St. John of God Liffey Services

Jul 2020 (Dec 2019 figure: 787)	WTE Jun 2020	WTE Jul 2020	WTE change since Jun 20	% change since Jun 20	WTE change since Dec 19	WTE change since Jul 19
<b>Overall</b>	<b>738</b>	<b>768</b>	<b>+29</b>	<b>+4.0%</b>	<b>-20</b>	<b>+18</b>
Registrars	1	1				
<b>Medical &amp; Dental</b>	<b>1</b>	<b>1</b>				
Nurse/ Midwife Manager	23	23	-0	-0.7%	+3	-1
Nurse/ Midwife Specialist & AN/MP	1	1				
Staff Nurse/ Staff Midwife	87	89	+2	+1.8%	-2	+9
<b>Nursing &amp; Midwifery</b>	<b>111</b>	<b>113</b>	<b>+1</b>	<b>+1.2%</b>	<b>+2</b>	<b>+7</b>
Therapy Professions	14	17	+3	+21.9%	+3	+1
Social Care	242	252	+10	+4.0%	-1	+6
Social Workers	6	6	+0	+7.4%	-1	-2
Psychologists	7	7	-0	-0.6%	+1	+1
<i>Play Therapists/ Specialists</i>	2		-2	-100.0%		
H&SC, Other	2		-2	-100.0%		
<b>Health &amp; Social Care Professionals</b>	<b>270</b>	<b>282</b>	<b>+11</b>	<b>+4.1%</b>	<b>+2</b>	<b>+7</b>
Management (VIII & above)	6	6			-0	-0
Administrative/ Supervisory (V to VII)	10	10			-1	+1
Clerical (III & IV)	18	19	+1	+6.0%	+1	+1
<b>Management &amp; Administrative</b>	<b>34</b>	<b>35</b>	<b>+1</b>	<b>+3.2%</b>	<b>-0</b>	<b>+1</b>
Support	29	30	+0	+0.8%	-5	-5
Maintenance/ Technical	13	13			+1	+1
<b>General Support</b>	<b>43</b>	<b>43</b>	<b>+0</b>	<b>+0.6%</b>	<b>-4</b>	<b>-4</b>
Health Care Assistants	142	158	+16	+11.0%	-14	+3
Care, other	137	137			-5	+4
<b>Patient &amp; Client Care</b>	<b>279</b>	<b>295</b>	<b>+16</b>	<b>+5.6%</b>	<b>-19</b>	<b>+7</b>

Jul 2020 (Dec 2019 figure: 1,431)	WTE Jun 2020	WTE Jul 2020	WTE change since Jun 20	% change since Jun 20	WTE change since Dec 19	WTE change since Jul 19
<b>Overall</b>	<b>1,403</b>	<b>1,376</b>	<b>-27</b>	<b>-1.9%</b>	<b>-55</b>	<b>+21</b>
Consultants	6	6	+0	+2.5%	-2	-0
Registrars	3	2	-1	-42.6%	-2	-3
Medical/ Dental, other	4	4	-0	-8.5%		
<b>Medical &amp; Dental</b>	<b>13</b>	<b>12</b>	<b>-1</b>	<b>-10.3%</b>	<b>-4</b>	<b>-3</b>
Nurse/ Midwife Manager	86	87	+1	+0.9%	+3	+6
Staff Nurse/ Staff Midwife	154	152	-3	-1.9%	-10	-3
<b>Nursing &amp; Midwifery</b>	<b>241</b>	<b>238</b>	<b>-2</b>	<b>-0.9%</b>	<b>-7</b>	<b>+3</b>
Therapy Professions	55	55	-0	-0.4%	+3	+10
Social Care	533	527	-6	-1.1%	+2	+20
Social Workers	21	21	-1	-3.8%	+1	+1
Psychologists	19	19			+0	+2
H&SC, Other	10	10			+0	-0
<b>Health &amp; Social Care Professionals</b>	<b>639</b>	<b>632</b>	<b>-7</b>	<b>-1.1%</b>	<b>+7</b>	<b>+33</b>
Management (VIII & above)	22	22			+0	+1
Administrative/ Supervisory (V to VII)	42	42	-0	-0.2%	-1	+3
Clerical (III & IV)	51	51	-0	-0.7%	-3	+4
<b>Management &amp; Administrative</b>	<b>115</b>	<b>114</b>	<b>-0</b>	<b>-0.4%</b>	<b>-4</b>	<b>+8</b>
Support	90	67	-24	-26.2%	-29	-7
Maintenance/ Technical	12	12			-0	-1
<b>General Support</b>	<b>102</b>	<b>79</b>	<b>-24</b>	<b>-23.1%</b>	<b>-29</b>	<b>-8</b>
Health Care Assistants	271	278	+7	+2.6%	-16	-11
Care, other	24	24	+0	+1.1%	-1	-1
<b>Patient &amp; Client Care</b>	<b>294</b>	<b>301</b>	<b>+7</b>	<b>+2.4%</b>	<b>-17</b>	<b>-12</b>

## St. Patrick's, Kilkenny

Jul 2020 (Dec 2019 figure: 279)	WTE Jun 2020	WTE Jul 2020	WTE change since Jun 20	% change since Jun 20	WTE change since Dec 19	WTE change since Jul 19
<b>Overall</b>	<b>285</b>	<b>288</b>	<b>+3</b>	<b>+1.1%</b>	<b>+9</b>	<b>-1</b>
Nurse/ Midwife Manager	12	11	-1	-10.3%	+1	+1
Staff Nurse/ Staff Midwife	25	25	+1	+2.0%	+0	-4
<b>Nursing &amp; Midwifery</b>	<b>37</b>	<b>36</b>	<b>-1</b>	<b>-2.0%</b>	<b>+1</b>	<b>-2</b>
Social Care	26	27	+1	+4.6%	-8	-8
Social Workers	1		-1	-100.0%	-2	-2
H&SC, Other	3	3			-0	+0
<b>Health &amp; Social Care Professionals</b>	<b>30</b>	<b>30</b>	<b>+0</b>	<b>+0.7%</b>	<b>-10</b>	<b>-9</b>
Executive Management	1	1			+1	+1
Management (VIII & above)	1	1			+1	+1
Administrative/ Supervisory (V to VII)	5	6	+1	+16.2%	-1	-0
Clerical (III & IV)	13	13	-1	-6.7%	-1	-1
<b>Management &amp; Administrative</b>	<b>19</b>	<b>19</b>	<b>-0</b>	<b>-0.5%</b>	<b>-1</b>	<b>-0</b>
Support	3	3	+0	+10.3%	-4	-10
Maintenance/ Technical	3	3				-2
<b>General Support</b>	<b>6</b>	<b>6</b>	<b>+0</b>	<b>+4.9%</b>	<b>-4</b>	<b>-12</b>
<b>Patient &amp; Client Care</b>	<b>193</b>	<b>196</b>	<b>+3</b>	<b>+1.8%</b>	<b>+23</b>	<b>+23</b>

## Sunbeam House Services

Jul 2020 (Dec 2019 figure: 449)	WTE Jun 2020	WTE Jul 2020	WTE change since Jun 20	% change since Jun 20	WTE change since Dec 19	WTE change since Jul 19
<b>Overall</b>	<b>428</b>	<b>433</b>	<b>+5</b>	<b>+1.1%</b>	<b>-16</b>	<b>-5</b>
Nurse/ Midwife Manager	3	3			-1	-2
Staff Nurse/ Staff Midwife	32	28	-4	-12.9%	-9	-10
<b>Nursing &amp; Midwifery</b>	<b>35</b>	<b>31</b>	<b>-4</b>	<b>-11.8%</b>	<b>-10</b>	<b>-12</b>
Therapy Professions	1	1	-0	-2.2%		-0
Social Care	161	165	+4	+2.4%	-17	-14
Social Workers	2	2	-0	-1.7%	-0	-0
Psychologists	2	2			+1	+1
H&SC, Other				-100.0%	-1	
<b>Health &amp; Social Care Professionals</b>	<b>166</b>	<b>170</b>	<b>+4</b>	<b>+2.3%</b>	<b>-16</b>	<b>-14</b>
Management (VIII & above)	9	10	+1	+11.1%	+1	+1
Administrative/ Supervisory (V to VII)	11	9	-1	-11.7%	+1	+1
Clerical (III & IV)	31	36	+4	+13.7%	+12	+10
<b>Management &amp; Administrative</b>	<b>51</b>	<b>55</b>	<b>+4</b>	<b>+7.9%</b>	<b>+14</b>	<b>+12</b>
Support	23	28	+5	+22.3%	+23	+16
Maintenance/ Technical	3	2	-1	-41.0%	-0	+2
<b>General Support</b>	<b>26</b>	<b>29</b>	<b>+4</b>	<b>+14.9%</b>	<b>+22</b>	<b>+18</b>
Health Care Assistants	57	63	+5	+9.3%	-9	+1
Care, other	93	85	-8	-8.7%	-18	-10
<b>Patient &amp; Client Care</b>	<b>150</b>	<b>147</b>	<b>-3</b>	<b>-1.9%</b>	<b>-26</b>	<b>-9</b>

Bros. of Charity, West Region

Jul 2020 (Dec 2019 figure: 1,288)	WTE Jun 2020	WTE Jul 2020	WTE change since Jun 20	% change since Jun 20	WTE change since Dec 19	WTE change since Jul 19
<b>Overall</b>	<b>1,263</b>	<b>1,265</b>	<b>+2</b>	<b>+0.2%</b>	<b>-23</b>	<b>+18</b>
Consultants	3	2	-0	-4.0%		
Registrars	2	2	+0	+10.0%	+0	+0
<b>Medical &amp; Dental</b>	<b>5</b>	<b>5</b>	<b>+0</b>	<b>+2.2%</b>	<b>+0</b>	<b>+0</b>
Nurse/ Midwife Manager	66	67	+1	+1.2%	-0	+5
Nurse/ Midwife Specialist & AN/MP	5	4	-1	-20.5%	-1	-1
Staff Nurse/ Staff Midwife	118	116	-1	-1.1%	-3	-4
<i>Pre-registration Nurse Intern (COVID-19)</i>		1	+1	-100.0%	+1	+1
Nursing/ Midwifery Student		1	+1	-100.0%	+1	+1
<b>Nursing &amp; Midwifery</b>	<b>189</b>	<b>189</b>	<b>-1</b>	<b>-0.3%</b>	<b>-3</b>	<b>+2</b>
Therapy Professions	29	27	-2	-6.8%	-7	-5
Social Care	209	208	-1	-0.3%	+13	+19
Social Workers	26	26	-1	-2.0%	+0	+1
Psychologists	14	12	-1	-8.9%	-2	-3
H&SC, Other	14	13	-1	-5.1%	-2	-3
<b>Health &amp; Social Care Professionals</b>	<b>292</b>	<b>287</b>	<b>-5</b>	<b>-1.7%</b>	<b>+1</b>	<b>+9</b>
Management (VIII & above)	13	13	-0	-0.0%	-0	-0
Administrative/ Supervisory (V to VII)	35	35	-0	-0.2%	+0	+3
Clerical (III & IV)	36	35	-1	-2.9%	-2	-4
<b>Management &amp; Administrative</b>	<b>84</b>	<b>83</b>	<b>-1</b>	<b>-1.3%</b>	<b>-2</b>	<b>-1</b>
Support	40	35	-5	-11.5%	-9	-10
Maintenance/ Technical	5	5			+0	+0
<b>General Support</b>	<b>45</b>	<b>40</b>	<b>-5</b>	<b>-10.2%</b>	<b>-9</b>	<b>-10</b>
Health Care Assistants	532	542	+10	+1.8%	-4	+12
Care, other	117	121	+4	+3.1%	-6	+6
<b>Patient &amp; Client Care</b>	<b>649</b>	<b>662</b>	<b>+13</b>	<b>+2.0%</b>	<b>-10</b>	<b>+17</b>

## Social Care Disability Services Employment by Grade Group: Jul 2020

Jul 2020 (Dec 2019 figure: 18,303)	WTE Jun 2020	WTE Jul 2020	WTE change since Jun 20	% change since Jun 20	WTE change since Dec 19	WTE change since Jul 19
<b>Overall</b>	<b>18,382</b>	<b>18,419</b>	<b>+37</b>	<b>+0.2%</b>	<b>+116</b>	<b>+354</b>
Consultant Paediatrics	3	3				
Consultant Psychiatry	20	19	-0	-1.5%	-2	-1
<b>Consultants</b>	<b>23</b>	<b>22</b>	<b>-0</b>	<b>-1.3%</b>	<b>-2</b>	<b>-1</b>
Registrar	5	4	-1	-12.4%	-3	-1
Senior Registrar	2	3	+1	+50.0%	+1	+2
Specialist Registrar	3	2	-0	-18.6%	-2	-2
<b>Registrars</b>	<b>10</b>	<b>10</b>	<b>-0</b>	<b>-1.1%</b>	<b>-3</b>	<b>-1</b>
<b>SHO/ Interns</b>	<b>10</b>	<b>9</b>	<b>-1</b>	<b>-6.7%</b>	<b>+2</b>	<b>+2</b>
<b>Medical/ Dental, other</b>	<b>15</b>	<b>14</b>	<b>-0</b>	<b>-2.4%</b>	<b>+0</b>	<b>-0</b>
<b>Medical &amp; Dental</b>	<b>57</b>	<b>56</b>	<b>-1</b>	<b>-2.5%</b>	<b>-3</b>	<b>+0</b>
Clinical Nurse/ Midwife Manager	817	820	+4	+0.5%	+10	+10
Director Nursing/Midwifery, Assistant	43	42	-1	-1.8%	+1	+5
Director of Nursing/Midwifery	37	37	-0	-0.1%	-5	-5
<b>Nurse/ Midwife Manager</b>	<b>896</b>	<b>899</b>	<b>+3</b>	<b>+0.3%</b>	<b>+6</b>	<b>+10</b>
Advanced Nurse/ Midwife Practitioner	2	2				
Clinical Nurse/ Midwife Specialist	62	63	+0	+0.1%	+3	+3
<b>Nurse/ Midwife Specialist &amp; AN/MP</b>	<b>64</b>	<b>65</b>	<b>+0</b>	<b>+0.1%</b>	<b>+3</b>	<b>+3</b>
Staff Nurse [Intellectual Disability]	1,581	1,573	-9	-0.6%	-24	-53
Staff Nurse [Psychiatric]	60	56	-3	-5.2%	-27	-8
Staff Nurses [General/ Children's]	896	892	-4	-0.4%	+0	+45
<b>Staff Nurse/ Staff Midwife</b>	<b>2,537</b>	<b>2,521</b>	<b>-16</b>	<b>-0.6%</b>	<b>-51</b>	<b>-16</b>
<b>Public Health Nurse</b>	<b>6</b>	<b>6</b>	<b>-0</b>	<b>-0.8%</b>	<b>-0</b>	<b>+1</b>
Pre-registration Nurse/ Midwife Intern	7	7	-0	-3.0%	-21	-63
Pre-registration Nurse Intern (COVID-19)	160	155	-5	-3.0%	+155	+155
Post-registration Nurse/ Midwife Student	4	4	-0	-1.7%	+4	+4
Nursing/ Midwifery awaiting registration	11	11			-3	+11
<b>Nursing/ Midwifery Student</b>	<b>182</b>	<b>177</b>	<b>-5</b>	<b>-2.8%</b>	<b>+135</b>	<b>+107</b>
Nursing Education/Clinical	24	24	+0	+0.0%	+3	+4
Other Nursing/ Midwifery	1	1				
<b>Nursing/ Midwifery other</b>	<b>25</b>	<b>25</b>	<b>+0</b>	<b>+0.0%</b>	<b>+3</b>	<b>+4</b>
<b>Nursing &amp; Midwifery</b>	<b>3,711</b>	<b>3,693</b>	<b>-18</b>	<b>-0.5%</b>	<b>+94</b>	<b>+108</b>
Dietitians	18	19	+1	+4.9%	+1	+4
Occupational Therapists	272	273	+1	+0.3%	+9	+31
Physiotherapists	193	189	-4	-1.8%	-0	+3
Speech & Language Therapists	299	301	+2	+0.7%	+8	+18
<b>Therapy Professions</b>	<b>782</b>	<b>782</b>	<b>+0</b>	<b>+0.0%</b>	<b>+18</b>	<b>+56</b>
Clinical Engineering	12	12			-1	-1
Clinical Measurement	1	2	+1	+100.0%	+1	+1
Medical Laboratory	4	4				
Phlebotomists	1		-1	-100.0%	-1	-1
Radiographers	1	1				
<b>Health Science/ Diagnostics</b>	<b>19</b>	<b>19</b>			<b>-1</b>	<b>-1</b>
<b>Social Care</b>	<b>2,614</b>	<b>2,618</b>	<b>+4</b>	<b>+0.2%</b>	<b>+23</b>	<b>+55</b>
<b>Social Workers</b>	<b>226</b>	<b>221</b>	<b>-5</b>	<b>-2.0%</b>	<b>+2</b>	<b>+6</b>
<b>Psychologists</b>	<b>212</b>	<b>212</b>	<b>+0</b>	<b>+0.1%</b>	<b>+8</b>	<b>+6</b>
<b>Pharmacy</b>	<b>7</b>	<b>8</b>	<b>+0</b>	<b>+6.4%</b>	<b>+1</b>	<b>+2</b>
Counsellor Therapists	19	21	+2	+10.7%	+2	+4
Other Health & Social Care	51	50	-1	-1.7%	-1	-1

Jul 2020 (Dec 2019 figure: 18,303)	WTE Jun 2020	WTE Jul 2020	WTE change since Jun 20	% change since Jun 20	WTE change since Dec 19	WTE change since Jul 19
<b>Overall</b>	<b>18,382</b>	<b>18,419</b>	<b>+37</b>	<b>+0.2%</b>	<b>+116</b>	<b>+354</b>
Play Therapists/ Specialists	14	13	-1	-6.3%	-2	-3
<b>H&amp;SC, Other</b>	<b>83</b>	<b>83</b>	<b>+0</b>	<b>+0.3%</b>	<b>-1</b>	<b>-0</b>
<b>Health &amp; Social Care Professionals</b>	<b>3,943</b>	<b>3,944</b>	<b>+1</b>	<b>+0.0%</b>	<b>+50</b>	<b>+123</b>
Executive Management	34	35	+1	+2.9%	+4	+5
Senior Management (VIII & GM)	154	155	+1	+0.8%	+6	+3
<b>Management (VIII &amp; above)</b>	<b>188</b>	<b>190</b>	<b>+2</b>	<b>+1.1%</b>	<b>+11</b>	<b>+8</b>
Middle Management (V-VII)	487	485	-2	-0.3%	+21	+40
Other Administrative	14	14			-1	-3
<b>Administrative/ Supervisory (V to VII)</b>	<b>501</b>	<b>499</b>	<b>-2</b>	<b>-0.3%</b>	<b>+20</b>	<b>+37</b>
<b>Clerical (III &amp; IV)</b>	<b>676</b>	<b>680</b>	<b>+4</b>	<b>+0.6%</b>	<b>+20</b>	<b>+34</b>
<b>Management &amp; Administrative</b>	<b>1,365</b>	<b>1,369</b>	<b>+4</b>	<b>+0.3%</b>	<b>+51</b>	<b>+80</b>
Catering	104	106	+2	+1.6%	+8	+5
Household Services	418	422	+4	+1.0%	+3	-18
Other Labs & Associated	1	1				
Other Support	179	152	-27	-15.1%	-36	-12
Portering	26	26			-1	+1
<b>Support</b>	<b>729</b>	<b>708</b>	<b>-21</b>	<b>-2.9%</b>	<b>-26</b>	<b>-24</b>
Maintenance	122	123	+1	+0.7%	+7	+2
Technical Services	7	7			-1	-1
<b>Maintenance/ Technical</b>	<b>129</b>	<b>130</b>	<b>+1</b>	<b>+0.7%</b>	<b>+6</b>	<b>+0</b>
<b>General Support</b>	<b>858</b>	<b>838</b>	<b>-20</b>	<b>-2.4%</b>	<b>-20</b>	<b>-24</b>
HCA, Nurse's Aide, etc.	6,768	6,820	+52	+0.8%	+3	+52
Health & Social Care Assistants	11	13	+2	+20.2%	+4	+4
<b>Health Care Assistants</b>	<b>6,779</b>	<b>6,833</b>	<b>+54</b>	<b>+0.8%</b>	<b>+7</b>	<b>+56</b>
Home Help	89	101	+12	+13.6%	-8	-11
Care, other	1,581	1,585	+5	+0.3%	-54	+23
<b>Patient &amp; Client Care</b>	<b>8,448</b>	<b>8,519</b>	<b>+71</b>	<b>+0.8%</b>	<b>-55</b>	<b>+68</b>

## Employment by WTE, Headcount, Gender, Full-Time /Part-Time etc.: Jul 2020

Social Care Disability Services Staff Group	WTE	Headcount	WTE: no.	% Male	% female	Male WTE: no.	Female WTE: no.	% Total Perm	% Male Perm	% Female Perm	% Total Full Time	% Total Part Time	% Male FT	% Female FT
<b>Overall</b>	<b>18,419</b>	<b>21,892</b>	<b>1.19</b>	<b>19.0%</b>	<b>81.0%</b>	<b>1.11</b>	<b>1.21</b>	<b>87.5%</b>	<b>86.5%</b>	<b>87.8%</b>	<b>56.8%</b>	<b>43.2%</b>	<b>69.7%</b>	<b>53.7%</b>
Consultant Paediatrics	3	6	1.97	16.7%	83.3%	1.82	2.00	66.7%	66.7%	80.0%	33.3%	66.7%	100.0%	20.0%
Consultant Psychiatry	19	26	1.35	30.8%	69.2%	1.28	1.38	80.8%	80.8%	77.8%	61.5%	38.5%	75.0%	55.6%
<b>Consultants</b>	<b>22</b>	<b>32</b>	<b>1.43</b>	<b>28.1%</b>	<b>71.9%</b>	<b>1.32</b>	<b>1.48</b>	<b>78.1%</b>	<b>77.8%</b>	<b>78.3%</b>	<b>56.3%</b>	<b>43.8%</b>	<b>77.8%</b>	<b>47.8%</b>
Registrar	4	7	1.60	71.4%	28.6%	1.95	1.10	0.0%	0.0%	0.0%	100.0%	0.0%	100.0%	100.0%
Senior Registrar	3	3	1.00		100.0%		1.00	66.7%	66.7%	66.7%	33.3%	66.7%		33.3%
Specialist Registrar	2	4	1.87	50.0%	50.0%	1.82	1.92	0.0%	0.0%	0.0%	25.0%	75.0%	0.0%	50.0%
<b>Registrars</b>	<b>10</b>	<b>14</b>	<b>1.47</b>	<b>50.0%</b>	<b>50.0%</b>	<b>1.91</b>	<b>1.20</b>	<b>14.3%</b>	<b>0.0%</b>	<b>28.6%</b>	<b>64.3%</b>	<b>35.7%</b>	<b>71.4%</b>	<b>57.1%</b>
<b>SHO/ Interns</b>	<b>9</b>	<b>17</b>	<b>1.84</b>	<b>35.3%</b>	<b>64.7%</b>	<b>1.65</b>	<b>1.96</b>	<b>0.0%</b>	<b>0.0%</b>	<b>0.0%</b>	<b>100.0%</b>	<b>0.0%</b>	<b>100.0%</b>	<b>100.0%</b>
<b>Medical/ Dental, other</b>	<b>14</b>	<b>22</b>	<b>1.53</b>	<b>45.5%</b>	<b>54.5%</b>	<b>1.27</b>	<b>1.84</b>	<b>86.4%</b>	<b>80.0%</b>	<b>91.7%</b>	<b>36.4%</b>	<b>63.6%</b>	<b>50.0%</b>	<b>25.0%</b>
<b>Medical &amp; Dental</b>	<b>56</b>	<b>85</b>	<b>1.53</b>	<b>37.6%</b>	<b>62.4%</b>	<b>1.45</b>	<b>1.58</b>	<b>54.1%</b>	<b>46.9%</b>	<b>58.5%</b>	<b>61.2%</b>	<b>38.8%</b>	<b>71.9%</b>	<b>54.7%</b>
Clinical Nurse/ Midwife Manager	820	883	1.08	12.5%	87.5%	1.02	1.09	93.0%	93.0%	93.3%	80.4%	19.6%	98.2%	77.9%
Director Nursing/Midwifery, Assistant	42	43	1.02	18.6%	81.4%	1.00	1.03	95.3%	95.3%	94.3%	93.0%	7.0%	100.0%	91.4%
Director of Nursing/Midwifery	37	37	1.00	10.8%	89.2%	1.00	1.00	100.0%	100.0%	100.0%	100.0%	0.0%	100.0%	100.0%
<b>Nurse/ Midwife Manager</b>	<b>899</b>	<b>963</b>	<b>1.07</b>	<b>12.7%</b>	<b>87.3%</b>	<b>1.02</b>	<b>1.08</b>	<b>93.4%</b>	<b>91.8%</b>	<b>93.6%</b>	<b>81.7%</b>	<b>18.3%</b>	<b>98.4%</b>	<b>79.3%</b>
Advanced Nurse/ Midwife Practitioner	2	2	1.00	100.0%		1.00		100.0%	100.0%		100.0%	0.0%	100.0%	
Clinical Nurse/ Midwife Specialist	63	73	1.17	4.1%	95.9%	1.01	1.18	97.3%	97.3%	97.1%	52.1%	47.9%	100.0%	50.0%
<b>Nurse/ Midwife Specialist &amp; AN/MP</b>	<b>65</b>	<b>75</b>	<b>1.16</b>	<b>6.7%</b>	<b>93.3%</b>	<b>1.01</b>	<b>1.18</b>	<b>97.3%</b>	<b>100.0%</b>	<b>97.1%</b>	<b>53.3%</b>	<b>46.7%</b>	<b>100.0%</b>	<b>50.0%</b>
Staff Nurse [Intellectual Disability]	1,573	1,832	1.16	8.5%	91.5%	1.09	1.17	95.4%	95.4%	95.3%	63.8%	36.2%	84.5%	61.8%
Staff Nurse [Psychiatric]	56	74	1.31	14.9%	85.1%	1.23	1.33	86.5%	86.5%	88.9%	60.8%	39.2%	72.7%	58.7%
Staff Nurses [General/ Children's]	892	1,025	1.15	11.9%	88.1%	1.05	1.16	95.4%	95.4%	95.5%	65.1%	34.9%	85.2%	62.3%
<b>Staff Nurse/ Staff Midwife</b>	<b>2,521</b>	<b>2,931</b>	<b>1.16</b>	<b>9.8%</b>	<b>90.2%</b>	<b>1.08</b>	<b>1.17</b>	<b>95.2%</b>	<b>94.8%</b>	<b>95.2%</b>	<b>64.1%</b>	<b>35.9%</b>	<b>84.4%</b>	<b>61.9%</b>
<b>Public Health Nurse</b>	<b>6</b>	<b>8</b>	<b>1.30</b>	<b>12.5%</b>	<b>87.5%</b>	<b>1.00</b>	<b>1.35</b>	<b>100.0%</b>	<b>100.0%</b>	<b>100.0%</b>	<b>37.5%</b>	<b>62.5%</b>	<b>100.0%</b>	<b>28.6%</b>
<b>Nursing/ Midwifery Student</b>	<b>177</b>	<b>189</b>	<b>1.07</b>	<b>4.2%</b>	<b>95.8%</b>	<b>1.02</b>	<b>1.07</b>	<b>21.2%</b>	<b>0.0%</b>	<b>22.1%</b>	<b>77.8%</b>	<b>22.2%</b>	<b>100.0%</b>	<b>76.8%</b>
Nursing Education/Clinical	24	27	1.13		100.0%		1.13	92.6%	92.6%	92.6%	74.1%	25.9%		74.1%
Other Nursing/ Midwifery	1	1	1.00	100.0%		1.00		100.0%	100.0%		100.0%	0.0%	100.0%	
<b>Nursing/ Midwifery other</b>	<b>25</b>	<b>28</b>	<b>1.12</b>	<b>3.6%</b>	<b>96.4%</b>	<b>1.00</b>	<b>1.13</b>	<b>92.9%</b>	<b>100.0%</b>	<b>92.6%</b>	<b>75.0%</b>	<b>25.0%</b>	<b>100.0%</b>	<b>74.1%</b>
<b>Nursing &amp; Midwifery</b>	<b>3,693</b>	<b>4,194</b>	<b>1.14</b>	<b>10.1%</b>	<b>89.9%</b>	<b>1.06</b>	<b>1.15</b>	<b>91.5%</b>	<b>92.2%</b>	<b>91.4%</b>	<b>68.6%</b>	<b>31.4%</b>	<b>88.9%</b>	<b>66.3%</b>

Dietitians	19	24	1.25		100.0%		1.25	83.3%	83.3%	83.3%	62.5%	37.5%		62.5%
Occupational Therapists	273	312	1.14	5.1%	94.9%	1.10	1.14	91.7%	91.7%	91.9%	74.7%	25.3%	81.3%	74.3%
Physiotherapists	189	221	1.17	16.3%	83.7%	1.07	1.19	90.5%	90.5%	89.7%	67.0%	33.0%	91.7%	62.2%
Speech & Language Therapists	301	347	1.15	1.7%	98.3%	1.09	1.16	89.3%	89.3%	89.4%	73.8%	26.2%	83.3%	73.6%
<b>Therapy Professions</b>	<b>782</b>	<b>904</b>	<b>1.16</b>	<b>6.4%</b>	<b>93.6%</b>	<b>1.08</b>	<b>1.16</b>	<b>90.3%</b>	<b>91.4%</b>	<b>90.2%</b>	<b>72.1%</b>	<b>27.9%</b>	<b>87.9%</b>	<b>71.0%</b>
Clinical Engineering	12	12	1.00	83.3%	16.7%	1.01	1.00	83.3%	83.3%	50.0%	91.7%	8.3%	90.0%	100.0%
Clinical Measurement	2	2	1.00	100.0%		1.00		50.0%	50.0%		100.0%	0.0%	100.0%	
Medical Laboratory	4	4	1.00	75.0%	25.0%	1.00	1.00	75.0%	75.0%	0.0%	100.0%	0.0%	100.0%	100.0%
Radiographers	1	1	1.00		100.0%		1.00	100.0%	100.0%	100.0%	100.0%	0.0%		100.0%
<b>Health Science/ Diagnostics</b>	<b>19</b>	<b>19</b>	<b>1.00</b>	<b>78.9%</b>	<b>21.1%</b>	<b>1.00</b>	<b>1.00</b>	<b>78.9%</b>	<b>86.7%</b>	<b>50.0%</b>	<b>94.7%</b>	<b>5.3%</b>	<b>93.3%</b>	<b>100.0%</b>
<b>Social Care</b>	<b>2,618</b>	<b>3,096</b>	<b>1.18</b>	<b>15.5%</b>	<b>84.5%</b>	<b>1.10</b>	<b>1.20</b>	<b>90.1%</b>	<b>92.1%</b>	<b>89.8%</b>	<b>48.5%</b>	<b>51.5%</b>	<b>63.9%</b>	<b>45.7%</b>
<b>Social Workers</b>	<b>221</b>	<b>263</b>	<b>1.19</b>	<b>17.1%</b>	<b>82.9%</b>	<b>1.07</b>	<b>1.22</b>	<b>92.0%</b>	<b>88.9%</b>	<b>92.7%</b>	<b>67.3%</b>	<b>32.7%</b>	<b>84.4%</b>	<b>63.8%</b>
<b>Psychologists</b>	<b>212</b>	<b>245</b>	<b>1.15</b>	<b>19.6%</b>	<b>80.4%</b>	<b>1.06</b>	<b>1.18</b>	<b>93.1%</b>	<b>89.6%</b>	<b>93.9%</b>	<b>71.4%</b>	<b>28.6%</b>	<b>83.3%</b>	<b>68.5%</b>
<b>Pharmacy</b>	<b>8</b>	<b>10</b>	<b>1.29</b>	<b>20.0%</b>	<b>80.0%</b>	<b>1.96</b>	<b>1.18</b>	<b>70.0%</b>	<b>50.0%</b>	<b>75.0%</b>	<b>60.0%</b>	<b>40.0%</b>	<b>0.0%</b>	<b>75.0%</b>
Counsellor Therapists	21	25	1.21	8.0%	92.0%	1.00	1.23	100.0%	100.0%	100.0%	52.0%	48.0%	100.0%	47.8%
Other Health & Social Care	50	61	1.23	19.7%	80.3%	1.21	1.23	88.5%	88.5%	87.8%	50.8%	49.2%	66.7%	46.9%
Play Therapists/ Specialists	13	16	1.24	18.8%	81.3%	1.00	1.31	93.8%	93.8%	92.3%	56.3%	43.8%	100.0%	46.2%
<b>H&amp;SC, Other</b>	<b>83</b>	<b>102</b>	<b>1.22</b>	<b>16.7%</b>	<b>83.3%</b>	<b>1.14</b>	<b>1.24</b>	<b>92.2%</b>	<b>94.1%</b>	<b>91.8%</b>	<b>52.0%</b>	<b>48.0%</b>	<b>76.5%</b>	<b>47.1%</b>
<b>Health &amp; Social Care</b>	<b>3,944</b>	<b>4,639</b>	<b>1.18</b>	<b>14.3%</b>	<b>85.7%</b>	<b>1.09</b>	<b>1.19</b>	<b>90.4%</b>	<b>91.4%</b>	<b>90.2%</b>	<b>55.7%</b>	<b>44.3%</b>	<b>69.6%</b>	<b>53.4%</b>
Executive Management	35	35	1.00	42.9%	57.1%	1.00	1.00	91.4%	91.4%	90.0%	100.0%	0.0%	100.0%	100.0%
Senior Management (VIII & GM)	155	159	1.02	30.2%	69.8%	1.00	1.03	96.2%	96.2%	95.5%	93.7%	6.3%	100.0%	91.0%
<b>Management (VIII &amp; above)</b>	<b>190</b>	<b>194</b>	<b>1.02</b>	<b>32.5%</b>	<b>67.5%</b>	<b>1.00</b>	<b>1.03</b>	<b>95.4%</b>	<b>96.8%</b>	<b>94.7%</b>	<b>94.8%</b>	<b>5.2%</b>	<b>100.0%</b>	<b>92.4%</b>
Middle Management (V-VII)	485	526	1.08	22.4%	77.6%	1.04	1.10	92.2%	92.2%	93.4%	80.6%	19.4%	92.4%	77.2%
Other Administrative	14	14	1.01	14.3%	85.7%	1.00	1.02	100.0%	100.0%	100.0%	92.9%	7.1%	100.0%	91.7%
<b>Administrative/ Supervisory (V to VII)</b>	<b>499</b>	<b>540</b>	<b>1.08</b>	<b>22.2%</b>	<b>77.8%</b>	<b>1.04</b>	<b>1.10</b>	<b>92.4%</b>	<b>88.3%</b>	<b>93.6%</b>	<b>80.9%</b>	<b>19.1%</b>	<b>92.5%</b>	<b>77.6%</b>
<b>Clerical (III &amp; IV)</b>	<b>680</b>	<b>821</b>	<b>1.21</b>	<b>9.5%</b>	<b>90.5%</b>	<b>1.10</b>	<b>1.22</b>	<b>87.3%</b>	<b>75.6%</b>	<b>88.6%</b>	<b>56.9%</b>	<b>43.1%</b>	<b>69.2%</b>	<b>55.6%</b>
<b>Management &amp; Administrative</b>	<b>1,369</b>	<b>1,555</b>	<b>1.14</b>	<b>16.8%</b>	<b>83.2%</b>	<b>1.05</b>	<b>1.16</b>	<b>90.1%</b>	<b>86.6%</b>	<b>90.8%</b>	<b>70.0%</b>	<b>30.0%</b>	<b>87.4%</b>	<b>66.5%</b>
Catering	106	129	1.22	29.5%	70.5%	1.19	1.24	97.7%	97.7%	97.8%	58.1%	41.9%	81.6%	48.4%
Household Services	422	596	1.41	15.1%	84.9%	1.38	1.42	88.1%	88.1%	90.9%	32.9%	67.1%	53.3%	29.2%
Other Labs & Associated	1	1	1.00		100.0%		1.00	100.0%	100.0%	100.0%	100.0%	0.0%		100.0%
Other Support	152	248	1.63	40.7%	59.3%	1.29	1.99	94.0%	94.0%	95.9%	23.8%	76.2%	51.5%	4.8%
Portering	26	35	1.33	97.1%	2.9%	1.33	1.25	88.6%	88.6%	100.0%	51.4%	48.6%	52.9%	0.0%
<b>Support</b>	<b>708</b>	<b>1,009</b>	<b>1.43</b>	<b>26.1%</b>	<b>73.9%</b>	<b>1.31</b>	<b>1.47</b>	<b>90.8%</b>	<b>85.2%</b>	<b>92.8%</b>	<b>34.6%</b>	<b>65.4%</b>	<b>56.7%</b>	<b>26.8%</b>
Maintenance	123	136	1.11	91.9%	8.1%	1.09	1.40	93.4%	93.4%	100.0%	76.5%	23.5%	80.8%	27.3%
Technical Services	7	7	0.99	57.1%	42.9%	0.98	1.00	100.0%	100.0%	100.0%	100.0%	0.0%	100.0%	100.0%



<b>Maintenance/ Technical</b>	<b>130</b>	<b>143</b>	<b>1.10</b>	<b>90.2%</b>	<b>9.8%</b>	<b>1.08</b>	<b>1.29</b>	<b>93.7%</b>	<b>93.0%</b>	<b>100.0%</b>	<b>77.6%</b>	<b>22.4%</b>	<b>81.4%</b>	<b>42.9%</b>
<b>General Support</b>	<b>838</b>	<b>1,152</b>	<b>1.37</b>	<b>34.0%</b>	<b>66.0%</b>	<b>1.22</b>	<b>1.47</b>	<b>91.1%</b>	<b>87.8%</b>	<b>92.9%</b>	<b>39.9%</b>	<b>60.1%</b>	<b>64.8%</b>	<b>27.1%</b>
HCA, Nurse's Aide, etc.	6,820	8,041	1.18	23.2%	76.8%	1.11	1.20	83.9%	83.9%	84.0%	52.2%	47.8%	63.3%	48.8%
Health & Social Care Assistants	13	16	1.21	18.8%	81.3%	1.00	1.27	75.0%	75.0%	76.9%	56.3%	43.8%	100.0%	46.2%
<b>Health Care Assistants</b>	<b>6,833</b>	<b>8,057</b>	<b>1.18</b>	<b>23.2%</b>	<b>76.8%</b>	<b>1.11</b>	<b>1.20</b>	<b>83.9%</b>	<b>83.4%</b>	<b>84.0%</b>	<b>52.2%</b>	<b>47.8%</b>	<b>63.4%</b>	<b>48.8%</b>
<b>Home Help</b>	<b>101</b>	<b>318</b>	<b>3.15</b>	<b>7.9%</b>	<b>92.1%</b>	<b>4.56</b>	<b>3.07</b>	<b>60.7%</b>	<b>52.0%</b>	<b>61.4%</b>	<b>3.1%</b>	<b>96.9%</b>	<b>4.0%</b>	<b>3.1%</b>
<b>Care, other</b>	<b>1,585</b>	<b>1,892</b>	<b>1.19</b>	<b>25.4%</b>	<b>74.6%</b>	<b>1.13</b>	<b>1.22</b>	<b>89.3%</b>	<b>90.0%</b>	<b>89.0%</b>	<b>60.7%</b>	<b>39.3%</b>	<b>75.3%</b>	<b>55.7%</b>
<b>Patient &amp; Client Care</b>	<b>8,519</b>	<b>10,267</b>	<b>1.21</b>	<b>23.2%</b>	<b>76.8%</b>	<b>1.12</b>	<b>1.23</b>	<b>84.2%</b>	<b>84.4%</b>	<b>84.1%</b>	<b>52.3%</b>	<b>47.7%</b>	<b>65.2%</b>	<b>48.4%</b>

## Employment by WTE, Headcount, Gender, Full-Time /Part-Time etc.: Jul 2020

Social Care Disability Services CHO	WTE	Headcount	WTE: no.	% Male	% female	Male WTE: no.	Female WTE: no.	% Total Perm	% Male Perm	% Female Perm	% Total Full Time	% Total Part Time	% Male FT	% Female FT
<b>Overall</b>	<b>18,419</b>	<b>21,892</b>	<b>1.19</b>	<b>19.0%</b>	<b>81.0%</b>	<b>1.11</b>	<b>1.21</b>	<b>87.5%</b>	<b>86.5%</b>	<b>87.8%</b>	<b>56.8%</b>	<b>43.2%</b>	<b>69.7%</b>	<b>53.7%</b>
<b>CHO 1</b>	<b>1,536</b>	<b>1,721</b>	<b>1.12</b>	<b>21.1%</b>	<b>78.9%</b>	<b>1.06</b>	<b>1.14</b>	<b>88.1%</b>	<b>88.1%</b>	<b>88.2%</b>	<b>76.9%</b>	<b>23.1%</b>	<b>89.3%</b>	<b>73.6%</b>
HSE	213	233	1.09	24.9%	75.1%	1.02	1.12	83.7%	83.7%	84.0%	73.8%	26.2%	94.8%	94.8%
Section 38	1,265	1,597	1.26	21.4%	78.6%	1.16	1.29	79.5%	79.5%	79.2%	37.8%	62.2%	45.3%	45.3%
<b>CHO 2</b>	<b>1,479</b>	<b>1,830</b>	<b>1.24</b>	<b>21.9%</b>	<b>78.1%</b>	<b>1.14</b>	<b>1.27</b>	<b>80.1%</b>	<b>80.1%</b>	<b>79.8%</b>	<b>42.4%</b>	<b>57.6%</b>	<b>52.5%</b>	<b>39.6%</b>
HSE	138	155	1.12	20.6%	79.4%	1.02	1.15	85.2%	85.2%	90.2%	72.9%	27.1%	87.5%	87.5%
Section 38	1,761	2,081	1.18	11.8%	88.2%	1.15	1.19	84.3%	84.3%	84.9%	38.5%	61.5%	40.4%	40.4%
<b>CHO 3</b>	<b>1,899</b>	<b>2,236</b>	<b>1.18</b>	<b>12.4%</b>	<b>87.6%</b>	<b>1.14</b>	<b>1.18</b>	<b>84.4%</b>	<b>84.4%</b>	<b>85.2%</b>	<b>40.9%</b>	<b>59.1%</b>	<b>45.8%</b>	<b>40.2%</b>
HSE	302	325	1.07	28.9%	71.1%	1.01	1.10	99.7%	99.7%	99.6%	76.9%	23.1%	95.7%	95.7%
Section 38	2,193	2,642	1.20	19.0%	81.0%	1.15	1.22	84.6%	84.6%	85.6%	62.9%	37.1%	69.6%	69.6%
<b>CHO 4</b>	<b>2,495</b>	<b>2,967</b>	<b>1.19</b>	<b>20.1%</b>	<b>79.9%</b>	<b>1.13</b>	<b>1.21</b>	<b>86.2%</b>	<b>86.2%</b>	<b>87.0%</b>	<b>64.5%</b>	<b>35.5%</b>	<b>73.7%</b>	<b>62.2%</b>
HSE	373	494	1.32	11.1%	88.9%	1.09	1.36	99.4%	99.4%	99.3%	53.6%	46.4%	80.0%	80.0%
Section 38	1,132	1,320	1.17	21.0%	79.0%	1.09	1.19	84.2%	84.2%	83.6%	45.9%	54.1%	59.9%	59.9%
<b>CHO 5</b>	<b>1,505</b>	<b>1,814</b>	<b>1.21</b>	<b>18.3%</b>	<b>81.7%</b>	<b>1.09</b>	<b>1.23</b>	<b>88.3%</b>	<b>88.3%</b>	<b>88.3%</b>	<b>48.0%</b>	<b>52.0%</b>	<b>63.3%</b>	<b>44.6%</b>
HSE	235	264	1.12	18.2%	81.8%	1.04	1.14	90.9%	90.9%	93.5%	79.5%	20.5%	97.9%	97.9%
Section 38	937	1,079	1.15	22.6%	77.4%	1.13	1.16	92.5%	92.5%	92.0%	64.6%	35.4%	73.0%	73.0%
<b>CHO 6</b>	<b>1,172</b>	<b>1,343</b>	<b>1.15</b>	<b>21.7%</b>	<b>78.3%</b>	<b>1.12</b>	<b>1.15</b>	<b>92.2%</b>	<b>92.2%</b>	<b>92.3%</b>	<b>67.5%</b>	<b>32.5%</b>	<b>77.1%</b>	<b>64.9%</b>
HSE	123	218	1.77	12.8%	87.2%	2.34	1.70	76.1%	76.1%	77.4%	45.4%	54.6%	32.1%	32.1%
Section 38	2,885	3,419	1.19	23.2%	76.8%	1.11	1.21	88.0%	88.0%	88.4%	67.7%	32.3%	81.7%	81.7%
<b>CHO 7</b>	<b>3,009</b>	<b>3,637</b>	<b>1.21</b>	<b>22.5%</b>	<b>77.5%</b>	<b>1.13</b>	<b>1.23</b>	<b>87.3%</b>	<b>87.3%</b>	<b>87.6%</b>	<b>66.3%</b>	<b>33.7%</b>	<b>80.0%</b>	<b>62.4%</b>
HSE	603	710	1.18	16.1%	83.9%	1.08	1.20	86.5%	86.5%	86.1%	67.3%	32.7%	86.0%	86.0%
Section 38	1,549	1,888	1.22	21.0%	79.0%	1.14	1.24	95.0%	95.0%	95.0%	40.4%	59.6%	49.7%	49.7%
<b>CHO 8</b>	<b>2,153</b>	<b>2,598</b>	<b>1.21</b>	<b>19.6%</b>	<b>80.4%</b>	<b>1.13</b>	<b>1.23</b>	<b>92.6%</b>	<b>92.6%</b>	<b>92.5%</b>	<b>47.7%</b>	<b>52.3%</b>	<b>57.8%</b>	<b>45.3%</b>
HSE	457	503	1.10	31.0%	69.0%	1.04	1.13	87.7%	87.7%	87.3%	85.5%	14.5%	93.6%	93.6%
Section 38	2,709	3,238	1.20	12.5%	87.5%	1.11	1.21	88.7%	88.7%	88.9%	50.5%	49.5%	64.6%	64.6%
<b>CHO 9</b>	<b>3,167</b>	<b>3,741</b>	<b>1.18</b>	<b>15.0%</b>	<b>85.0%</b>	<b>1.09</b>	<b>1.20</b>	<b>88.5%</b>	<b>88.5%</b>	<b>88.7%</b>	<b>55.2%</b>	<b>44.8%</b>	<b>72.7%</b>	<b>52.1%</b>
<b>other Community Services</b>	<b>5</b>	<b>5</b>	<b>1.01</b>	<b>20.0%</b>	<b>80.0%</b>	<b>1.01</b>	<b>1.01</b>	<b>80.0%</b>	<b>80.0%</b>	<b>75.0%</b>	<b>80.0%</b>	<b>20.0%</b>	<b>100.0%</b>	<b>75.0%</b>

Summary Staff Movement: July 2020

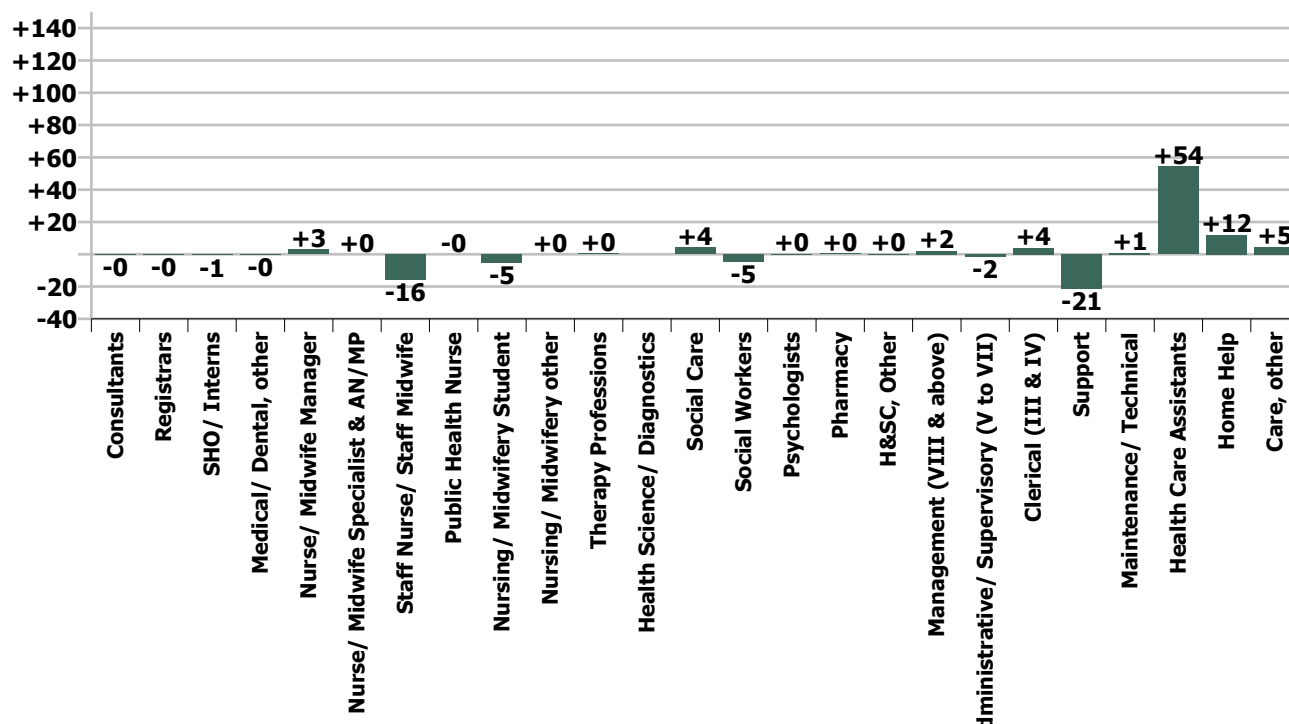
Month-on-month  
Summary

WTE change since Jun 20	% change since Jun 20	overall	Consultants	Registrars	SHO/ Interns	Medical/ Dental, other	Medical & Dental	Nurse/ Midwife Manager	Nurse/ Midwife Specialist & AN/MP	Staff Nurse/ Staff Midwife	Public Health Nurse	Nursing/ Midwifery Student	Nursing/ Midwifery other	Nursing & Midwifery	Therapy Professions	Health Science/ Diagnostics	Social Care	Social Workers	Psychologists	Pharmacy	H&SC, Other	Health & Social Care Professionals	Management (VIII & above)	Administrativ e/ Supervisory (V to VII)	Clerical (III & IV)	Management & Administrativ e	Support	Maintenance/ Technical	General Support	Health Care Assistants	Home Help	Care, other	Patient & Client Care
Overall	+0.2%	+37	-0.3	-0.1	-0.7	-0.3	-1.4	+3.1	+0.0	-15.8	-0.1	-5.1	0.0	-17.9	+0.4	0.0	+4.1	-4.5	+0.1	+0.5	+0.3	+0.8	+2.2	-1.6	+4.0	+4.5	-21.3	+0.9	-20.3	+54.4	+12.1	+4.5	+71.0
CHO 1	+0.7%	+10					0.0	+0.7		+1.0		-0.7		+1.0	-0.3		+0.1	-0.1	+0.1		+0.8	+0.5		-1.0	+2.7	+1.7	+0.1		+0.1	+5.4	+0.0	+1.4	+6.8
CHO 2	+0.3%	+4	-0.1	+0.2			+0.1	+0.8	-1.1	-1.5		+1.0		-0.8	-1.4		-0.3	-0.5	-1.1		-0.7	-4.0	+1.0	-0.1	-1.0	-0.1	-4.6		-4.6	+10.2		+3.6	+13.8
CHO 3	+0.4%	+8	+0.6				+0.6	-1.6		-0.8		-0.1		-2.5	+2.1		+7.5	-0.9	+1.0		-0.0	+9.7		+2.3	-0.5	+1.8	+0.0	+2.1	+2.2	-6.4		+2.5	-3.9
CHO 4	+0.8%	+21					0.0	-0.3	+1.0	-3.2				-2.6	+0.1		+0.9	-0.3	-0.1		+1.2	+1.7		-0.2	+1.0	+0.8	+1.4		+1.4	+13.7		+5.4	+19.2
CHO 5	+1.8%	+27	-1.0				-1.0	+1.8	+1.0	-5.3	-0.0	-4.2		-6.8	-1.6		+0.8	-1.7	+0.7		+1.0	-0.8	-0.7	-1.5	-1.8	-4.0	+0.1		+0.1	+31.6	+10.5	-2.7	+39.4
CHO 6	+0.8%	+9					0.0	-0.0		-4.7				-4.8	+0.6		+2.3	-0.0	+0.3		+0.1	+3.1	+1.2	-1.1	+3.3	+3.3	+5.5	-1.2	+4.3	+7.3		-4.0	+3.3
CHO 7	+1.2%	+36			-0.5		-0.5	+2.8	-1.8	+6.1				+7.1	+1.9		+8.8	+0.2	+0.5	+0.5	-2.0	+9.9	-1.0	+1.5	+1.5	+2.0	+1.5	-0.0	+1.5	+17.3	+0.1	-1.7	+15.7
CHO 8	-1.5%	-34		+0.8			+0.8	-2.6	-0.1	-3.9		-0.2		-6.8	-1.3		-7.2	-0.0	-2.0		-0.1	-10.6	+1.7	-1.3	-0.9	-0.5	-2.2		-2.2	-14.7	+1.5	-1.3	-14.5
CHO 9	-1.4%	-45	+0.2		-0.2	-0.3	-1.5	+1.5	+1.0	-3.4		-0.9		-1.9	+0.4		-8.8	-1.1	+0.7			-8.9		-0.2	-0.3	-0.5	-23.1		-23.1	-10.1		+1.3	-8.8
other Community Services	-0.2%	-0																				-0.0				-0.0							
		+0.2%	-1.3%	-1.1%	-6.7%	-2.4%	-2.5%	+0.3%	+0.1%	-0.6%	-0.8%	-2.8%		-0.5%	+0.0%		+0.2%	-2.0%	+0.1%	+6.4%	+0.3%	+0.0%	+1.1%	-0.3%	+0.6%	+0.3%	-2.9%	+0.7%	-2.4%	+0.8%	+13.6%	+0.3%	+0.8%

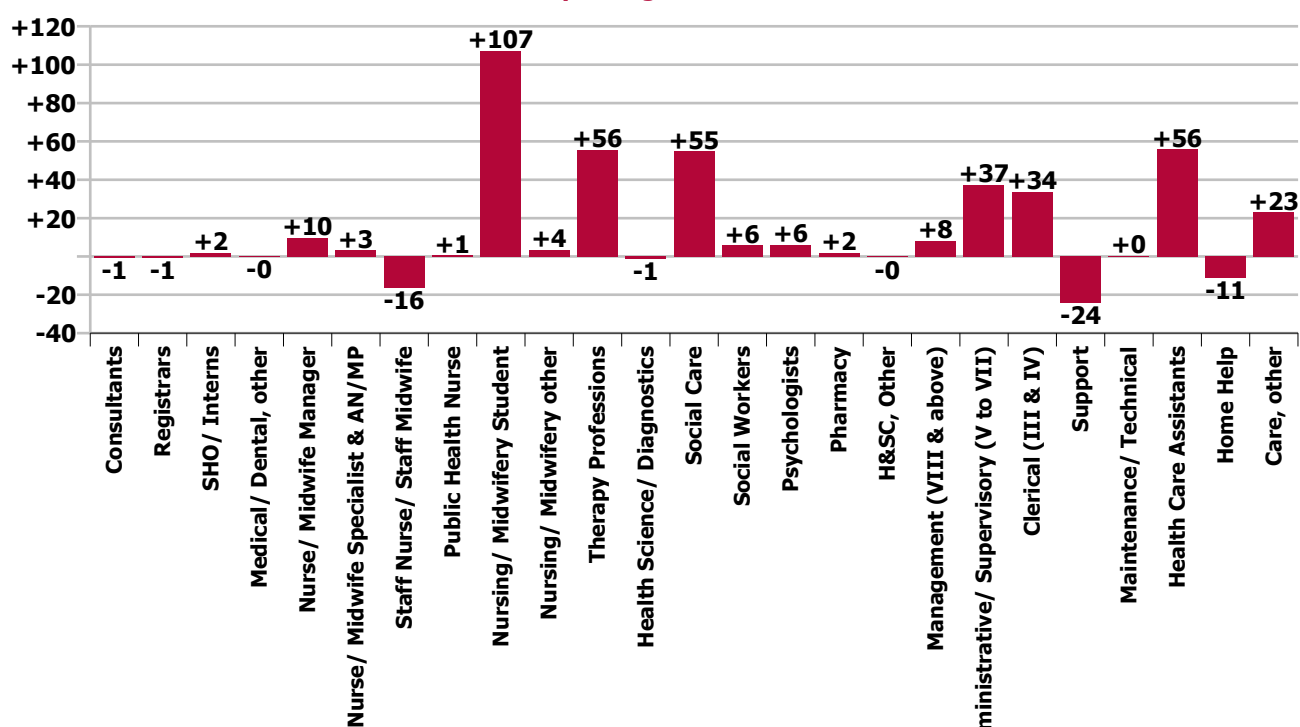
Year-on-year Summary

WTE change since Jul 19	% change since Jul 19	overall	Consultants	Registrars	SHO/ Interns	Medical/ Dental, other	Medical & Dental	Nurse/ Midwife Manager	Nurse/ Midwife Specialist & AN/MP	Staff Nurse/ Staff Midwife	Public Health Nurse	Nursing/ Midwifery Student	Nursing/ Midwifery other	Nursing & Midwifery	Therapy Professions	Health Science/ Diagnostics	Social Care	Social Workers	Psychologists	Pharmacy	H&SC, Other	Health & Social Care Professionals	Management (VIII & above)	Administrative/ Supervisory (V to VII)	Clerical (III & IV)	Management & Administrative	Support	Maintenance/ Technical	General Support	Health Care Assistants	Home Help	Care, other	Patient & Client Care	
Overall	+2.0%	+354	-1	-1	+2	-0	+0	+10	+3	-16	+1	+107	+4	+108	+56	-1	+55	+6	+6	+6	+2	-0	+123	+8	+37	+34	+80	-24	+0	-24	+56	-11	+23	+68
CHO 1	+2.6%	+39				+0		+3	+3	-10		+27	-0	+23	+5		+0	+6	+1			-3	+10	+1	+7	+4	+13	-0	-0	-0	-6	-1	+1	-6
CHO 2	+1.2%	+17		+0			+0	+6	-1	-2		+1		+4	-5		+20	-0	-2			-3	+9	-0	+1	-4	-3	-10	+0	-10	+11		+5	+16
CHO 3	+4.5%	+83	-0				-0	+7	+1	-2		+18		+23	+6	+1	+13	-4	+5	+5		-0	+21		+2	+3	+5	-3	+4	+1	+27		+5	+32
CHO 4	+1.3%	+33						-3	+1	-8		+17		+7	-4		+5	+0	-0			+3	+4	+2	+3	+0	+6	+3	-1	+2	+4		+11	+14
CHO 5	+3.3%	+48	-1			-0	-1	+1	+1	+9	+1	+1		+13	+1		-16	+1	+1			+1	-12	+1	+4	-0	+5	-7	-3	-10	+45	-8	+16	+53
CHO 6	-0.3%	-3						-2		-16				-17	+5		-13	-3	-1			+0	-11	+0	+3	+12	+15	+15	+3	+18	+5		-13	-8
CHO 7	+2.1%	+61		+1	+0		+1	-4	-2	+12		+8		+13	+26		+6	+2	+0	+2			+36	+5	+4	+9	+18	-6	-0	-6	-5	-2	+6	-1
CHO 8	+0.4%	+9		+1			+1	-3	+0	-1		+18	+2	+15	+7		+5	+1	-4			+0	+10	+1	+6	+4	+12	-6	-0	-6	-18	+0	-5	-23
CHO 9	+2.2%	+68	+0	-3	+2		-0	+5	+1	+2		+18	+2	+27	+15	-2	+34	+2	+6			+1	+55	-2	+5	+5	+8	-10	-3	-13	-7		-2	-10
other Community Services	+0.0%	+0																								+0								
		+2.0%	-3.9%	-7.9%	+28.7%	-1.3%	+0.3%	+1.1%	+5.4%	-0.6%	+10.8%	+154.4%	+16.5%	+3.0%	+7.7%	-5.2%	+2.1%	+2.7%	+3.0%	+33.2%	-0.5%	+3.2%	+4.6%	+8.1%	+5.2%	+6.2%	-3.3%	+0.3%	-2.8%	+0.8%	-9.9%	+1.5%	+0.8%	

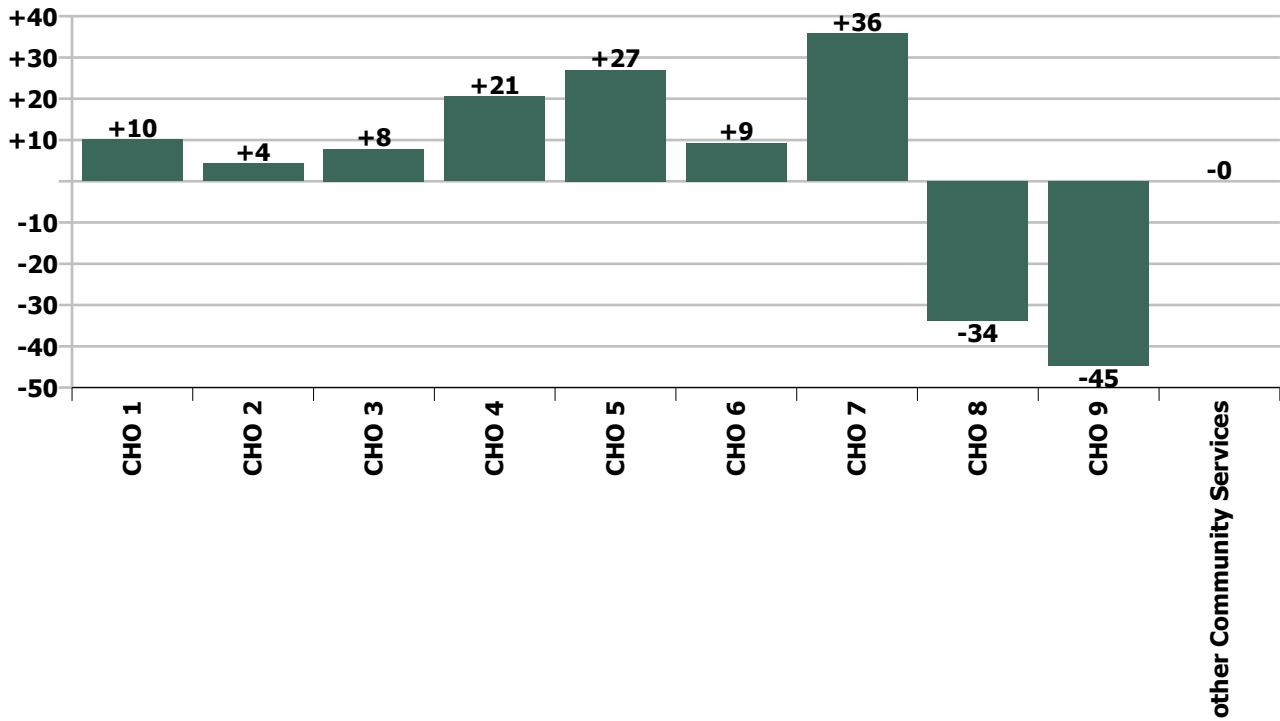
### Staff Group change since: Jun 2020



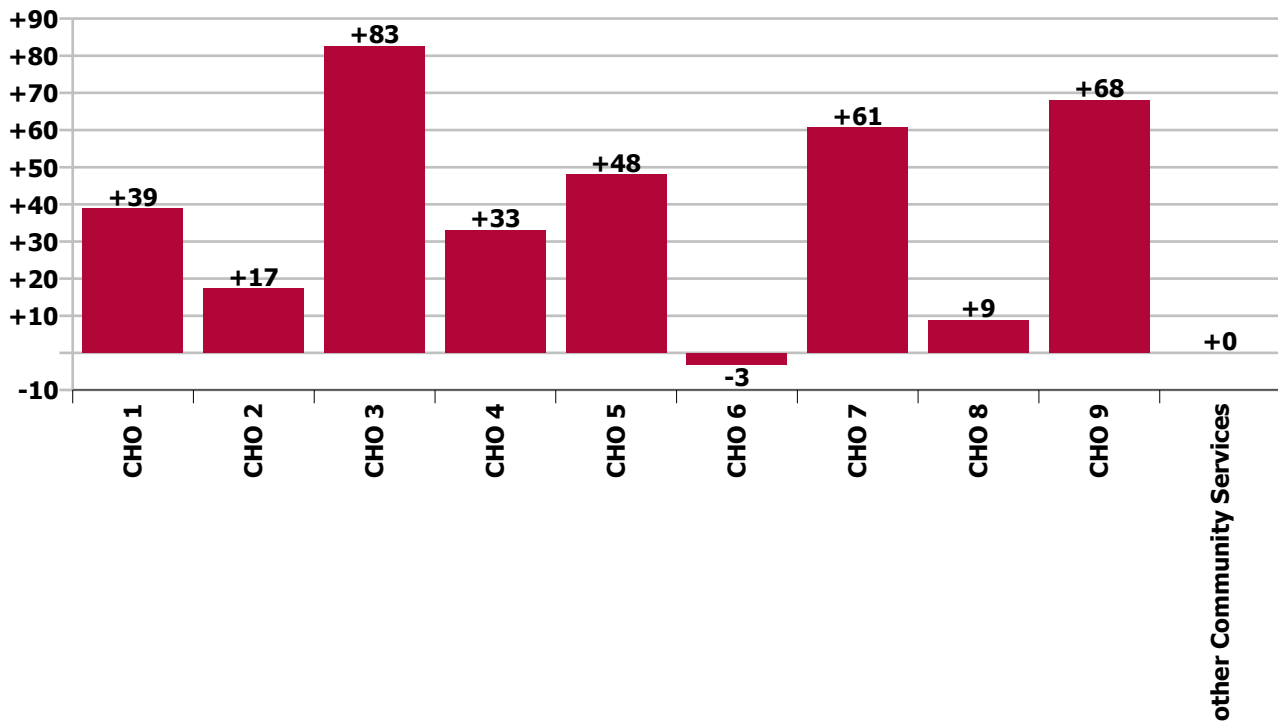
### Staff Group change since: Jul 2019



CHO change since: Jun 2020



CHO change since: Jul 2019



## Longitudinal Employment Levels by Grade Group - Oct 2013 to Jul 2020

Jul 2020 (Oct 2013 figure: 14,880)	WTE Jul 2020	WTE change since Oct 13	WTE change since Dec 15	WTE change since Dec 16	WTE change since Dec 17	WTE change since Dec 18	WTE change since Dec 19	% change since Oct 13	% change since Dec 15	% change since Dec 16	% change since Dec 17	% change since Dec 18	% change since Dec 19
<b>Overall</b>	<b>18,419</b>	<b>+3,538</b>	<b>+2,704</b>	<b>+1,665</b>	<b>+1,022</b>	<b>+599</b>	<b>+116</b>	<b>+23.8%</b>	<b>+17.2%</b>	<b>+9.9%</b>	<b>+5.9%</b>	<b>+3.4%</b>	<b>+0.6%</b>
Consultant Medicine		-2	-2	-2				-100.0%	-100.0%	-100.0%	-100.0%	-100.0%	-100.0%
Consultant Paediatrics	3	+0	-0	-0	-0			+6.6%	-3.5%	-5.0%	-2.9%		
Consultant Psychiatry	19	-9	-2	-2	-4	+1	-2	-33.0%	-7.8%	-8.7%	-15.6%	+7.7%	-7.4%
Consultant Surgery		-0	-0	-0				-100.0%	-100.0%	-100.0%	-100.0%	-100.0%	-100.0%
<b>Consultants</b>	<b>22</b>	<b>-11</b>	<b>-3</b>	<b>-4</b>	<b>-4</b>	<b>+1</b>	<b>-2</b>	<b>-33.0%</b>	<b>-13.3%</b>	<b>-14.2%</b>	<b>-14.0%</b>	<b>+6.6%</b>	<b>-6.5%</b>
Registrar	4	-4	-2	-2	-2	-1	-3	-46.7%	-27.0%	-27.0%	-27.0%	-17.7%	-37.4%
Senior Registrar	3			+1		+1	+1			+50.0%		+50.0%	+50.0%
Specialist Registrar	2	+0	+0	+0	-2	+1	-2	+7.0%	+7.0%	+7.0%	-46.5%	+114.0%	-46.5%
<b>Registrars</b>	<b>10</b>	<b>-4</b>	<b>-1</b>	<b>-0</b>	<b>-3</b>	<b>+1</b>	<b>-3</b>	<b>-27.9%</b>	<b>-13.5%</b>	<b>-4.8%</b>	<b>-26.8%</b>	<b>+14.4%</b>	<b>-26.8%</b>
<b>SHO/ Interns</b>	<b>9</b>	<b>+2</b>	<b>+4</b>	<b>+3</b>	<b>+2</b>	<b>+2</b>	<b>+2</b>	<b>+21.9%</b>	<b>+85.0%</b>	<b>+54.2%</b>	<b>+32.1%</b>	<b>+33.1%</b>	<b>+32.9%</b>
Dentists			-1					-100.0%	-100.0%	-100.0%	-100.0%	-100.0%	-100.0%
Other Medical	14	-3	-1	-0	+0	+0	+0	-16.1%	-6.2%	-3.2%	+0.9%	+1.8%	+0.1%
<b>Medical/ Dental, other</b>	<b>14</b>	<b>-3</b>	<b>-1</b>	<b>-0</b>	<b>+0</b>	<b>+0</b>	<b>+0</b>	<b>-16.1%</b>	<b>-9.3%</b>	<b>-3.2%</b>	<b>+0.9%</b>	<b>+1.8%</b>	<b>+0.1%</b>
<b>Medical &amp; Dental</b>	<b>56</b>	<b>-16</b>	<b>-2</b>	<b>-1</b>	<b>-5</b>	<b>+5</b>	<b>-3</b>	<b>-22.1%</b>	<b>-3.7%</b>	<b>-2.4%</b>	<b>-7.9%</b>	<b>+10.2%</b>	<b>-4.7%</b>
Clinical Nurse/ Midwife Manager	820	+30	+22	+9	+12	+12	+10	+3.8%	+2.8%	+1.1%	+1.5%	+1.5%	+1.2%
Director Nursing/Midwifery, Assistant	42	+3	+5	-0	+5	+4	+1	+6.9%	+14.6%	-0.7%	+13.3%	+10.6%	+3.0%
Director of Nursing/Midwifery	37	-5	-10	-7	-9	-1	-5	-11.4%	-21.5%	-15.5%	-19.0%	-2.8%	-12.5%
<b>Nurse/ Midwife Manager</b>	<b>899</b>	<b>+28</b>	<b>+17</b>	<b>+2</b>	<b>+8</b>	<b>+15</b>	<b>+6</b>	<b>+3.3%</b>	<b>+2.0%</b>	<b>+0.2%</b>	<b>+0.9%</b>	<b>+1.7%</b>	<b>+0.6%</b>
Advanced Nurse/ Midwife Practitioner	2	+1	+1	+1				+100.0%	+100.0%	+100.0%			
Clinical Nurse/ Midwife Specialist	63	-19	-11	-8	-5	-4	+3	-23.0%	-14.8%	-11.9%	-8.0%	-5.6%	+4.4%
<b>Nurse/ Midwife Specialist &amp; AN/MP</b>	<b>65</b>	<b>-18</b>	<b>-10</b>	<b>-7</b>	<b>-5</b>	<b>-4</b>	<b>+3</b>	<b>-21.5%</b>	<b>-13.3%</b>	<b>-10.3%</b>	<b>-7.7%</b>	<b>-5.5%</b>	<b>+4.2%</b>
Graduate Nursing/ Midwifery		-10	-11					-100.0%	-100.0%	-100.0%	-100.0%	-100.0%	-100.0%
Staff Nurse [Intellectual Disability]	1,573	-183	-207	-152	-130	-111	-24	-10.4%	-11.6%	-8.8%	-7.6%	-6.6%	-1.5%
Staff Nurse [Psychiatric]	56	-89	-49	-28	-14	-14	-27	-61.1%	-46.5%	-33.4%	-19.8%	-20.3%	-32.3%
Staff Nurses [General/ Children's]	892	-127	-5	-42	-32	+24	+0	-12.4%	-0.5%	-4.5%	-3.5%	+2.7%	+0.0%
<b>Staff Nurse/ Staff Midwife</b>	<b>2,521</b>	<b>-408</b>	<b>-272</b>	<b>-222</b>	<b>-176</b>	<b>-102</b>	<b>-51</b>	<b>-13.9%</b>	<b>-9.7%</b>	<b>-8.1%</b>	<b>-6.5%</b>	<b>-3.9%</b>	<b>-2.0%</b>
<b>Public Health Nurse</b>	<b>6</b>	<b>-1</b>	<b>-1</b>	<b>-0</b>	<b>+0</b>	<b>-1</b>	<b>-0</b>	<b>-13.6%</b>	<b>-15.0%</b>	<b>-5.2%</b>	<b>+1.0%</b>	<b>-8.0%</b>	<b>-1.8%</b>
Pre-registration Nurse/ Midwife Intern	7	-15	-7	-5	-5	-28	-21	-68.5%	-52.5%	-43.4%	-42.4%	-80.5%	-76.0%
Pre-registration Nurse Intern (COVID-19)	155	+155	+155	+155	+155	+155	+155	-100.0%	-100.0%	-100.0%	-100.0%	-100.0%	-100.0%
Post-registration Nurse/ Midwife Student	4	+4	+4	+4	+4	+4	+4	-100.0%	-100.0%	-100.0%	-100.0%	-100.0%	-100.0%
Nursing/ Midwifery awaiting registration	11	+11	+11	+11	+11	+11	-3	-100.0%	-100.0%	-100.0%	-100.0%	-100.0%	-20.5%
<b>Nursing/ Midwifery Student</b>	<b>177</b>	<b>+155</b>	<b>+162</b>	<b>+165</b>	<b>+165</b>	<b>+142</b>	<b>+135</b>	<b>+720.1%</b>	<b>+1137.1%</b>	<b>+1372.2%</b>	<b>+1398.4%</b>	<b>+407.4%</b>	<b>+319.7%</b>
Nursing Education/Clinical	24	-1	+4	+3	+3	+3	+3	-3.4%	+17.1%	+12.5%	+13.4%	+13.0%	+12.9%
Other Nursing/ Midwifery	1	-7	-5	-4	-4			-87.1%	-84.5%	-80.0%	-80.0%		
<b>Nursing/ Midwifery other</b>	<b>25</b>	<b>-8</b>	<b>-2</b>	<b>-1</b>	<b>-1</b>	<b>+3</b>	<b>+3</b>	<b>-23.4%</b>	<b>-7.3%</b>	<b>-5.1%</b>	<b>-4.5%</b>	<b>+12.4%</b>	<b>+12.3%</b>
<b>Nursing &amp; Midwifery</b>	<b>3,693</b>	<b>-251</b>	<b>-105</b>	<b>-65</b>	<b>-10</b>	<b>+53</b>	<b>+94</b>	<b>-6.4%</b>	<b>-2.8%</b>	<b>-1.7%</b>	<b>-0.3%</b>	<b>+1.5%</b>	<b>+2.6%</b>
Dietitians	19	+0	+7	+6	+7	+5	+1	+2.6%	+62.9%	+45.8%	+61.0%	+40.0%	+4.0%

Jul 2020 (Oct 2013 figure: 14,880)	WTE Jul 2020	WTE change since Oct 13	WTE change since Dec 15	WTE change since Dec 16	WTE change since Dec 17	WTE change since Dec 18	WTE change since Dec 19	% change since Oct 13	% change since Dec 15	% change since Dec 16	% change since Dec 17	% change since Dec 18	% change since Dec 19
<b>Overall</b>	<b>18,419</b>	<b>+3,538</b>	<b>+2,704</b>	<b>+1,665</b>	<b>+1,022</b>	<b>+599</b>	<b>+116</b>	<b>+23.8%</b>	<b>+17.2%</b>	<b>+9.9%</b>	<b>+5.9%</b>	<b>+3.4%</b>	<b>+0.6%</b>
Occupational Therapists	273	+92	+72	+22	+25	+32	+9	+50.5%	+35.5%	+8.7%	+9.9%	+13.4%	+3.4%
Physiotherapists	189	+40	+23	+4	+4	+8	-0	+26.6%	+14.1%	+2.3%	+2.3%	+4.5%	-0.1%
Podiatrists & Chiropodists		-0	-0	-0	-0			-100.0%	-100.0%	-100.0%	-100.0%	-100.0%	-100.0%
Speech & Language Therapists	301	+122	+88	+30	+18	+22	+8	+68.6%	+41.1%	+11.1%	+6.4%	+7.8%	+2.7%
<b>Therapy Professions</b>	<b>782</b>	<b>+254</b>	<b>+190</b>	<b>+62</b>	<b>+54</b>	<b>+68</b>	<b>+18</b>	<b>+48.1%</b>	<b>+32.1%</b>	<b>+8.6%</b>	<b>+7.4%</b>	<b>+9.5%</b>	<b>+2.3%</b>
Audiology		-7	-14	-13	-18			-100.0%	-100.0%	-100.0%	-100.0%	-100.0%	-100.0%
Clinical Engineering	12	-6	-6	-6	-6	-0	-1	-33.2%	-34.0%	-34.7%	-33.6%	-0.4%	-8.1%
Clinical Measurement	2	+1	+1	+1	+1	+1	+1	+100.0%	+100.0%	+100.0%	+100.0%	+100.0%	+100.0%
Medical Laboratory	4	+1	+1	+1	+1			+33.3%	+33.3%	+33.3%	+33.3%		
Phlebotomists						-1	-1	-100.0%	-100.0%	-100.0%	-100.0%	-100.0%	-100.0%
Radiographers	1	-0						-3.8%					
<b>Health Science/ Diagnostics</b>	<b>19</b>	<b>-11</b>	<b>-18</b>	<b>-17</b>	<b>-22</b>	<b>-0</b>	<b>-1</b>	<b>-35.9%</b>	<b>-48.8%</b>	<b>-47.3%</b>	<b>-53.6%</b>	<b>-0.3%</b>	<b>-5.2%</b>
<b>Social Care</b>	<b>2,618</b>	<b>+858</b>	<b>+679</b>	<b>+426</b>	<b>+272</b>	<b>+129</b>	<b>+23</b>	<b>+48.7%</b>	<b>+35.0%</b>	<b>+19.5%</b>	<b>+11.6%</b>	<b>+5.2%</b>	<b>+0.9%</b>
<b>Social Workers</b>	<b>221</b>	<b>+41</b>	<b>+32</b>	<b>+6</b>	<b>+1</b>	<b>+2</b>	<b>+2</b>	<b>+22.6%</b>	<b>+17.0%</b>	<b>+2.6%</b>	<b>+0.2%</b>	<b>+0.8%</b>	<b>+1.1%</b>
<b>Psychologists</b>	<b>212</b>	<b>+47</b>	<b>+21</b>	<b>+3</b>	<b>-11</b>	<b>+6</b>	<b>+8</b>	<b>+28.1%</b>	<b>+10.8%</b>	<b>+1.2%</b>	<b>-5.0%</b>	<b>+2.8%</b>	<b>+4.1%</b>
<b>Pharmacy</b>	<b>8</b>	<b>+2</b>	<b>+2</b>	<b>+2</b>	<b>+2</b>	<b>+1</b>	<b>+1</b>	<b>+36.0%</b>	<b>+27.1%</b>	<b>+27.1%</b>	<b>+28.0%</b>	<b>+11.3%</b>	<b>+14.9%</b>
Counsellor Therapists	21	+8	+4	+4	+1	+3	+2	+62.8%	+24.5%	+23.0%	+6.6%	+16.6%	+9.6%
HSCP Trainees/ Students		-2	-3	-2	-1			-100.0%	-100.0%	-100.0%	-100.0%	-100.0%	-100.0%
Other Health & Social Care	50	-17	-12	-9	-9	-2	-1	-25.5%	-19.5%	-14.6%	-15.3%	-4.1%	-1.5%
Play Therapists/ Specialists	13	-3	-0	-1	-0	-2	-2	-19.8%	-1.3%	-5.1%	-1.7%	-11.1%	-16.2%
<b>H&amp;SC, Other</b>	<b>83</b>	<b>-14</b>	<b>-11</b>	<b>-8</b>	<b>-8</b>	<b>-1</b>	<b>-1</b>	<b>-14.6%</b>	<b>-11.9%</b>	<b>-8.5%</b>	<b>-9.2%</b>	<b>-0.9%</b>	<b>-1.7%</b>
<b>Health &amp; Social Care Professionals</b>	<b>3,944</b>	<b>+1,177</b>	<b>+894</b>	<b>+474</b>	<b>+287</b>	<b>+204</b>	<b>+50</b>	<b>+42.5%</b>	<b>+29.3%</b>	<b>+13.6%</b>	<b>+7.8%</b>	<b>+5.5%</b>	<b>+1.3%</b>
Executive Management	35	+9	+7	+6	-3	+3	+4	+34.8%	+25.0%	+20.7%	-7.9%	+10.1%	+13.7%
Senior Management (VIII & GM)	155	+41	+25	+18	+15	+11	+6	+35.8%	+19.1%	+13.0%	+10.4%	+7.6%	+4.4%
<b>Management (VIII &amp; above)</b>	<b>190</b>	<b>+50</b>	<b>+32</b>	<b>+24</b>	<b>+12</b>	<b>+14</b>	<b>+11</b>	<b>+35.6%</b>	<b>+20.1%</b>	<b>+14.4%</b>	<b>+6.5%</b>	<b>+8.0%</b>	<b>+6.0%</b>
Middle Management (V-VII)	485	+165	+142	+106	+93	+57	+21	+51.5%	+41.2%	+27.9%	+23.6%	+13.4%	+4.5%
Other Administrative	14	-3	-1		-2	-2	-1	-19.9%	-9.4%		-13.4%	-12.6%	-7.6%
<b>Administrative/ Supervisory (V to VII)</b>	<b>499</b>	<b>+161</b>	<b>+140</b>	<b>+106</b>	<b>+90</b>	<b>+55</b>	<b>+20</b>	<b>+47.8%</b>	<b>+39.1%</b>	<b>+26.9%</b>	<b>+22.2%</b>	<b>+12.5%</b>	<b>+4.2%</b>
<b>Clerical (III &amp; IV)</b>	<b>680</b>	<b>+106</b>	<b>+97</b>	<b>+73</b>	<b>+48</b>	<b>+27</b>	<b>+20</b>	<b>+18.5%</b>	<b>+16.7%</b>	<b>+12.1%</b>	<b>+7.6%</b>	<b>+4.1%</b>	<b>+3.0%</b>
<b>Management &amp; Administrative</b>	<b>1,369</b>	<b>+318</b>	<b>+269</b>	<b>+203</b>	<b>+150</b>	<b>+96</b>	<b>+51</b>	<b>+30.2%</b>	<b>+24.5%</b>	<b>+17.4%</b>	<b>+12.3%</b>	<b>+7.6%</b>	<b>+3.8%</b>
Catering	106	-31	-11	-8	-0	+1	+8	-22.7%	-9.5%	-6.7%	-0.0%	+1.3%	+7.8%
Household Services	422	-196	-126	-85	-44	-29	+3	-31.6%	-23.0%	-16.7%	-9.5%	-6.5%	+0.7%
Other Labs & Associated	1		-0	-0		-0			-16.7%	-6.5%		-3.8%	
Other Support	152	-42	-55	-41	-37	-39	-36	-21.6%	-26.5%	-21.3%	-19.5%	-20.2%	-19.0%
Portering	26	-20	-2	-0	-0	+1	-1	-43.3%	-5.4%	-1.0%	-0.4%	+2.6%	-4.4%
<b>Support</b>	<b>708</b>	<b>-288</b>	<b>-194</b>	<b>-134</b>	<b>-81</b>	<b>-66</b>	<b>-26</b>	<b>-29.0%</b>	<b>-21.5%</b>	<b>-15.9%</b>	<b>-10.3%</b>	<b>-8.5%</b>	<b>-3.6%</b>
Maintenance	123	-6	-4	-2	-8	+3	+7	-4.9%	-3.2%	-1.3%	-6.1%	+2.6%	+5.9%
Technical Services	7	+3	+2	+2	+2	+1	-1	+73.2%	+39.2%	+39.2%	+39.2%	+16.4%	-12.3%
<b>Maintenance/ Technical</b>	<b>130</b>	<b>-3</b>	<b>-2</b>	<b>+0</b>	<b>-6</b>	<b>+4</b>	<b>+6</b>	<b>-2.5%</b>	<b>-1.6%</b>	<b>+0.2%</b>	<b>-4.4%</b>	<b>+3.3%</b>	<b>+4.8%</b>



Jul 2020 (Oct 2013 figure: 14,880)	WTE Jul 2020	WTE change since Oct 13	WTE change since Dec 15	WTE change since Dec 16	WTE change since Dec 17	WTE change since Dec 18	WTE change since Dec 19	% change since Oct 13	% change since Dec 15	% change since Dec 16	% change since Dec 17	% change since Dec 18	% change since Dec 19
<b>Overall</b>	<b>18,419</b>	<b>+3,538</b>	<b>+2,704</b>	<b>+1,665</b>	<b>+1,022</b>	<b>+599</b>	<b>+116</b>	<b>+23.8%</b>	<b>+17.2%</b>	<b>+9.9%</b>	<b>+5.9%</b>	<b>+3.4%</b>	<b>+0.6%</b>
<b>General Support</b>	<b>838</b>	<b>-292</b>	<b>-196</b>	<b>-134</b>	<b>-87</b>	<b>-62</b>	<b>-20</b>	<b>-25.8%</b>	<b>-18.9%</b>	<b>-13.8%</b>	<b>-9.4%</b>	<b>-6.9%</b>	<b>-2.4%</b>
HCA, Nurse's Aide, etc.	6,820	+2,391	+1,651	+1,066	+644	+289	+3	+54.0%	+31.9%	+18.5%	+10.4%	+4.4%	+0.0%
Health & Social Care Assistants	13	+4	+3	+3	+4	+2	+4	+44.2%	+26.9%	+23.8%	+46.0%	+21.9%	+38.8%
<b>Health Care Assistants</b>	<b>6,833</b>	<b>+2,395</b>	<b>+1,653</b>	<b>+1,069</b>	<b>+648</b>	<b>+292</b>	<b>+7</b>	<b>+54.0%</b>	<b>+31.9%</b>	<b>+18.5%</b>	<b>+10.5%</b>	<b>+4.5%</b>	<b>+0.1%</b>
<b>Home Help</b>	<b>101</b>	<b>-37</b>	<b>+8</b>	<b>+6</b>	<b>-23</b>	<b>-12</b>	<b>-8</b>	<b>-26.9%</b>	<b>+9.1%</b>	<b>+5.9%</b>	<b>-18.3%</b>	<b>-10.3%</b>	<b>-7.1%</b>
<b>Ambulance Staff</b>		<b>-8</b>						<b>-100.0%</b>	<b>-100.0%</b>	<b>-100.0%</b>	<b>-100.0%</b>	<b>-100.0%</b>	<b>-100.0%</b>
<b>Care, other</b>	<b>1,585</b>	<b>+252</b>	<b>+182</b>	<b>+113</b>	<b>+61</b>	<b>+23</b>	<b>-54</b>	<b>+18.9%</b>	<b>+12.9%</b>	<b>+7.7%</b>	<b>+4.0%</b>	<b>+1.4%</b>	<b>-3.3%</b>
<b>Patient &amp; Client Care</b>	<b>8,519</b>	<b>+2,602</b>	<b>+1,844</b>	<b>+1,188</b>	<b>+687</b>	<b>+303</b>	<b>-55</b>	<b>+44.0%</b>	<b>+27.6%</b>	<b>+16.2%</b>	<b>+8.8%</b>	<b>+3.7%</b>	<b>-0.6%</b>

Source: Health Service Personnel Census