

# Social Care Disability Services Employment Report: March 2021

## Employment by Staff Group

Mar 2021 (Dec 2020 figure: 18,944)	WTE Feb 2021	WTE Mar 2021	WTE change since Feb 21	% change since Feb 21	WTE change since Dec 20	WTE change since Mar 20
<b>Overall</b>	<b>18,983</b>	<b>19,039</b>	<b>+56</b>	<b>+0.3%</b>	<b>+95</b>	<b>+770</b>
Consultants	23	22	-1	-3.9%	-3	-2
Registrars	10	10	+0	+0.6%	+2	-1
SHO/ Interns	7	8	+1	+13.6%	-1	-0
Medical/ Dental, other	14	14	+0	+0.1%		-0
<b>Medical &amp; Dental</b>	<b>54</b>	<b>54</b>	<b>+0</b>	<b>+0.2%</b>	<b>-2</b>	<b>-2</b>
Nurse/ Midwife Manager	901	907	+6	+0.7%	+10	+18
Nurse/ Midwife Specialist & AN/MP	67	65	-2	-2.8%	+1	+3
Staff Nurse/ Staff Midwife	2,604	2,606	+2	+0.1%	+13	+47
Public Health Nurse	7	10	+3	+44.9%	+3	+4
Pre-registration Nurse/ Midwife Intern	75	80.64	+5	+7.1%	+78	+2
Pre-registration Nurse Intern (COVID-19)	10		-10	-100.0%	-32	
Nursing/ Midwifery awaiting registration	13	13.00				-2
Nursing/ Midwifery Student	98	94	-4	-4.3%	+46	-0
Nursing/ Midwifery other	25	26	+1	+4.1%	+2	+2
<b>Nursing &amp; Midwifery</b>	<b>3,701</b>	<b>3,708</b>	<b>+6</b>	<b>+0.2%</b>	<b>+76</b>	<b>+74</b>
Therapy Professions	800	802	+3	+0.4%	+7	+31
Health Science/ Diagnostics	21	22	+1	+2.9%	+2	+4
Social Care	2,797	2,802	+6	+0.2%	+13	+205
Social Workers	229	232	+3	+1.3%	+4	+8
Psychologists	232	232	+1	+0.3%	+3	+18
Pharmacy	6	6	+0	+0.5%	+0	-0
H&SC, Other	76	75	-1	-1.4%	-1	-10
<b>Health &amp; Social Care Professionals</b>	<b>4,161</b>	<b>4,172</b>	<b>+12</b>	<b>+0.3%</b>	<b>+29</b>	<b>+256</b>
Management (VIII & above)	211	215	+4	+1.7%	+11	+32
Administrative/ Supervisory (V to VII)	537	548	+11	+2.0%	+21	+55
Clerical (III & IV)	683	695	+12	+1.8%	+10	+22
<b>Management &amp; Administrative</b>	<b>1,431</b>	<b>1,458</b>	<b>+27</b>	<b>+1.9%</b>	<b>+42</b>	<b>+109</b>
Support	648	648	-0	-0.0%	-15	-88
Maintenance/ Technical	129	130	+1	+0.4%	-3	+3
<b>General Support</b>	<b>778</b>	<b>778</b>	<b>+0</b>	<b>+0.0%</b>	<b>-17</b>	<b>-85</b>
Health Care Assistants	7,067	7,081	+14	+0.2%	-21	+355
Home Help	92	90	-1	-1.5%	-3	-16
Care, other	1,701	1,698	-3	-0.1%	-8	+79
<b>Patient &amp; Client Care</b>	<b>8,859</b>	<b>8,869</b>	<b>+10</b>	<b>+0.1%</b>	<b>-32</b>	<b>+418</b>

## Social Care Disability Services Employment by Administration (HSE / S38): March 2021

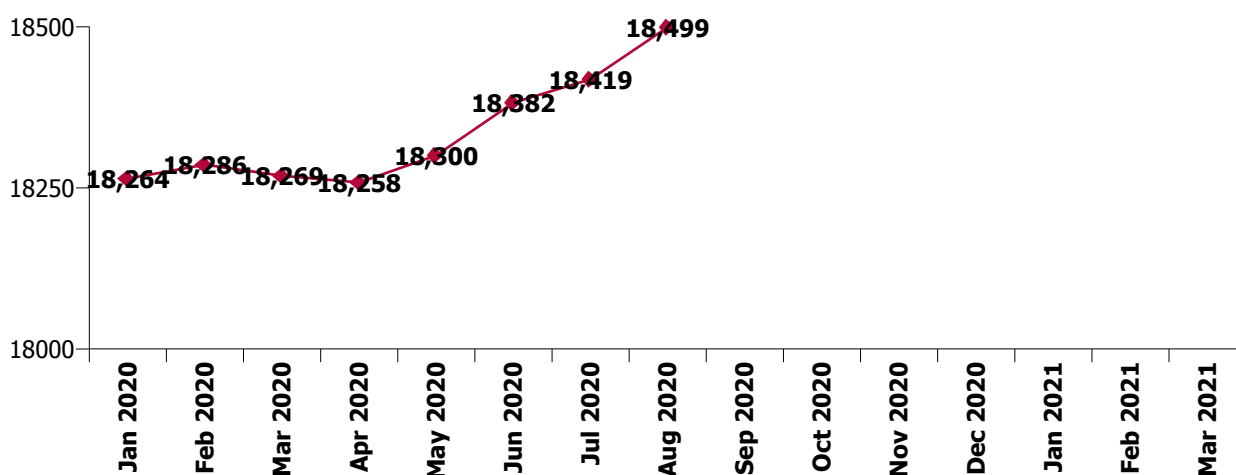
Mar 2021 (Dec 2020 figure: 18,944)	WTE Feb 2021	WTE Mar 2021	WTE change since Feb 21	% change since Feb 21	WTE change since Dec 20	WTE change since Mar 20
<b>Overall</b>	<b>18,983</b>	<b>19,039</b>	<b>+56</b>	<b>+0.3%</b>	<b>+95</b>	<b>+770</b>
<b>HSE</b>	<b>4,147</b>	<b>4,181</b>	<b>+33</b>	<b>+0.8%</b>	<b>+96</b>	<b>+233</b>
<b>Section 38</b>	<b>14,836</b>	<b>14,858</b>	<b>+22</b>	<b>+0.1%</b>	<b>-1</b>	<b>+537</b>

### HSE

Mar 2021 (Dec 2020 figure: 4,085)	WTE Feb 2021	WTE Mar 2021	WTE change since Feb 21	% change since Feb 21	WTE change since Dec 20	WTE change since Mar 20
<b>Overall</b>	<b>4,147</b>	<b>4,181</b>	<b>+33</b>	<b>+0.8%</b>	<b>+96</b>	<b>+233</b>
Consultants	8	7.50			-1	-1
Registrars	3	2.80			+2	+2
SHO/ Interns				-100.0%	-2	-1
Medical/ Dental, other	6	6.23	+0	+0.2%		-0
<b>Medical &amp; Dental</b>	<b>17</b>	<b>17</b>	<b>+0</b>	<b>+0.1%</b>	<b>-1</b>	<b>-0</b>
Nurse/ Midwife Manager	265	263.18	-2	-0.8%	+2	+14
Nurse/ Midwife Specialist & AN/MP	17	16.82	+0	+0.2%	+2	+2
Staff Nurse/ Staff Midwife	777	785.71	+9	+1.1%	+13	-10
Public Health Nurse	7	9.94	+3	+44.9%	+3	+4
Pre-registration Nurse/ Midwife Intern	30	34.00	+4	+13.3%	+32	+7
Pre-registration Nurse Intern (COVID-19)	10		-10	-100.0%	-9	
Nursing/ Midwifery awaiting registration	13	13.00				-2
Nursing/ Midwifery Student	53	47.00	-6	-10.5%	+23	+5
Nursing/ Midwifery other	8	7.68	+0	+0.1%	+1	-0
<b>Nursing &amp; Midwifery</b>	<b>1,126</b>	<b>1,130</b>	<b>+4</b>	<b>+0.4%</b>	<b>+45</b>	<b>+15</b>
Therapy Professions	369	372.97	+4	+1.1%	+0	+34
Health Science/ Diagnostics	4	3.95				+2
Social Care	101	99.52	-2	-1.7%	-1	+12
Social Workers	68	66.74	-1	-1.6%	+0	+5
Psychologists	85	87.24	+2	+2.6%	+5	+13
H&SC, Other	26	25.27	-0	-1.6%	+0	+0
<b>Health &amp; Social Care Professionals</b>	<b>653</b>	<b>656</b>	<b>+3</b>	<b>+0.5%</b>	<b>+4</b>	<b>+66</b>
Management (VIII & above)	61	64.16	+3	+4.4%	+6	+16
Administrative/ Supervisory (V to VII)	174	185.35	+11	+6.3%	+17	+39
Clerical (III & IV)	205	214.72	+10	+4.8%	+16	+25
<b>Management &amp; Administrative</b>	<b>441</b>	<b>464</b>	<b>+23</b>	<b>+5.3%</b>	<b>+39</b>	<b>+80</b>
Support	89	89.26	+1	+0.8%	+1	+4
Maintenance/ Technical	27	26.82	-0	-1.7%	+1	+6
<b>General Support</b>	<b>116</b>	<b>116</b>	<b>+0</b>	<b>+0.2%</b>	<b>+2</b>	<b>+10</b>
Health Care Assistants	1,561	1,561.38	+0	+0.0%	+4	+39
Home Help	92	90.38	-1	-1.5%	-3	-16
Care, other	143	146.20	+4	+2.6%	+6	+38
<b>Patient &amp; Client Care</b>	<b>1,796</b>	<b>1,798</b>	<b>+2</b>	<b>+0.1%</b>	<b>+7</b>	<b>+62</b>

## Section 38

Mar 2021 (Dec 2020 figure: 14,860)	WTE Feb 2021	WTE Mar 2021	WTE change since Feb 21	% change since Feb 21	WTE change since Dec 20	WTE change since Mar 20
<b>Overall</b>	<b>14,836</b>	<b>14,858</b>	<b>+22</b>	<b>+0.1%</b>	<b>-1</b>	<b>+537</b>
Consultants	15	14.18	-1	-5.9%	-2	-1
Registrars	7	7.06	+0	+0.9%	+0	-2
SHO/ Interns	7	7.95	+1	+13.6%	+1	+1
Medical/ Dental, other	8	8.09				
<b>Medical &amp; Dental</b>	<b>37</b>	<b>37</b>	<b>+0</b>	<b>+0.3%</b>	<b>-1</b>	<b>-2</b>
Nurse/ Midwife Manager	636	643.80	+8	+1.3%	+8	+3
Nurse/ Midwife Specialist & AN/MP	50	48.53	-2	-3.8%	-1	+1
Staff Nurse/ Staff Midwife	1,827	1,820.07	-7	-0.4%	-1	+57
Pre-registration Nurse/ Midwife Intern	45	46.64	+1	+2.9%	+47	-5
Pre-registration Nurse Intern (COVID-19)				-100.0%	-23	
Nursing/ Midwifery Student	45	46.64	+1	+2.9%	+23	-5
Nursing/ Midwifery other	17	18.33	+1	+5.8%	+1	+2
<b>Nursing &amp; Midwifery</b>	<b>2,575</b>	<b>2,577</b>	<b>+2</b>	<b>+0.1%</b>	<b>+31</b>	<b>+59</b>
Therapy Professions	431	429.51	-1	-0.3%	+7	-3
Health Science/ Diagnostics	17	17.60	+1	+3.5%	+2	+2
Social Care	2,695	2,702.50	+7	+0.3%	+14	+193
Social Workers	161	165.56	+4	+2.5%	+4	+3
Psychologists	147	145.22	-1	-1.0%	-1	+5
Pharmacy	6	6.38	+0	+0.5%	+0	-0
H&SC, Other	51	49.91	-1	-1.3%	-1	-10
<b>Health &amp; Social Care Professionals</b>	<b>3,508</b>	<b>3,517</b>	<b>+9</b>	<b>+0.2%</b>	<b>+25</b>	<b>+190</b>
Management (VIII & above)	149	150.34	+1	+0.6%	+4	+17
Administrative/ Supervisory (V to VII)	363	362.88	-0	-0.0%	+4	+16
Clerical (III & IV)	478	480.44	+2	+0.5%	-6	-4
<b>Management &amp; Administrative</b>	<b>990</b>	<b>994</b>	<b>+3</b>	<b>+0.3%</b>	<b>+3</b>	<b>+29</b>
<b>General Support</b>	<b>662</b>	<b>662</b>	<b>+0</b>	<b>+0.0%</b>	<b>-19</b>	<b>-95</b>
<b>Patient &amp; Client Care</b>	<b>7,063</b>	<b>7,071</b>	<b>+8</b>	<b>+0.1%</b>	<b>-40</b>	<b>+356</b>



## Social Care Disability Services Employment by CHO Mar 2021

### CHO 1

Mar 2021 (Dec 2020 figure: 1,547)	WTE Feb 2021	WTE Mar 2021	WTE change since Feb 21	% change since Feb 21	WTE change since Dec 20	WTE change since Mar 20
<b>Overall</b>	<b>1,575</b>	<b>1,575</b>	<b>-0</b>	<b>-0.0%</b>	<b>+28</b>	<b>+51</b>
Medical/ Dental, other	3	3				-0
<b>Medical &amp; Dental</b>	<b>3</b>	<b>3</b>				<b>-0</b>
Nurse/ Midwife Manager	106	106	-0	-0.1%	-0	+1
Nurse/ Midwife Specialist & AN/MP	10	10	+0	+0.4%	+1	+2
Staff Nurse/ Staff Midwife	332	335	+2	+0.7%	+6	+10
Pre-registration Nurse/ Midwife Intern	19	24	+5	+27.0%	+21	+5
Pre-registration Nurse Intern (COVID-19)	6		-6	-100.0%		
Nursing/ Midwifery awaiting registration	11	11				
Nursing/ Midwifery Student	35	35	-1	-1.4%	+17	+5
Nursing/ Midwifery other	4	4				-1
<b>Nursing &amp; Midwifery</b>	<b>487</b>	<b>489</b>	<b>+2</b>	<b>+0.3%</b>	<b>+24</b>	<b>+17</b>
Therapy Professions	43	41	-3	-6.6%	-3	-6
Social Care	11	11	-1	-5.2%	-1	+2
Social Workers	19	18	-1	-3.7%	-1	-0
Psychologists	11	11	-0	-0.7%	+4	+6
H&SC, Other	10	10	-0	-2.0%	+0	-3
<b>Health &amp; Social Care Professionals</b>	<b>95</b>	<b>90</b>	<b>-4</b>	<b>-4.7%</b>	<b>-0</b>	<b>-0</b>
Management (VIII & above)	17	17				+3
Administrative/ Supervisory (V to VII)	36	36	+0	+0.1%	+2	+7
Clerical (III & IV)	52	52	-0	-0.1%	-0	+3
<b>Management &amp; Administrative</b>	<b>105</b>	<b>105</b>	<b>+0</b>	<b>+0.0%</b>	<b>+2</b>	<b>+13</b>
Support	50	49	-0	-0.5%	+0	+1
Maintenance/ Technical	6	6	-0	-7.0%		
<b>General Support</b>	<b>56</b>	<b>55</b>	<b>-1</b>	<b>-1.3%</b>	<b>+0</b>	<b>+1</b>
Health Care Assistants	776	777	+2	+0.2%	+2	+16
Home Help	15	15	-0	-1.0%	+1	+1
Care, other	39	40	+2	+3.9%	-1	+4
<b>Patient &amp; Client Care</b>	<b>829</b>	<b>832</b>	<b>+3</b>	<b>+0.4%</b>	<b>+2</b>	<b>+21</b>

## CHO 2

Mar 2021 (Dec 2020 figure: 1,516)	WTE Feb 2021	WTE Mar 2021	WTE change since Feb 21	% change since Feb 21	WTE change since Dec 20	WTE change since Mar 20
<b>Overall</b>	<b>1,508</b>	<b>1,510</b>	<b>+1</b>	<b>+0.1%</b>	<b>-6</b>	<b>+29</b>
Consultants	3	3				
Registrars	2	2				-1
Medical/ Dental, other	1	1	+0	+1.0%		
<b>Medical &amp; Dental</b>	<b>6</b>	<b>6</b>	<b>+0</b>	<b>+0.2%</b>		<b>-1</b>
Nurse/ Midwife Manager	80	79	-1	-0.7%	+1	+2
Nurse/ Midwife Specialist & AN/MP	6	7	+1	+17.0%	+1	+1
Staff Nurse/ Staff Midwife	166	168	+2	+1.2%	-1	+0
<i>Pre-registration Nurse Intern (COVID-19)</i>				-100.0%		
Nursing/ Midwifery Student				-100.0%	-1	
<b>Nursing &amp; Midwifery</b>	<b>252</b>	<b>254</b>	<b>+2</b>	<b>+0.9%</b>	<b>+0</b>	<b>+3</b>
Therapy Professions	35	34	-1	-2.5%	+0	-8
Social Care	247	246	-1	-0.3%	+3	+26
Social Workers	27	27	+0	+0.2%	+1	+1
Psychologists	16	15	-0	-0.5%	+1	-1
H&SC, Other	11	10	-1	-7.7%	-1	-5
<b>Health &amp; Social Care Professionals</b>	<b>336</b>	<b>333</b>	<b>-3</b>	<b>-0.7%</b>	<b>+4</b>	<b>+13</b>
Management (VIII & above)	17	16	-1	-5.9%	+0	+1
Administrative/ Supervisory (V to VII)	45	43	-2	-4.9%	-2	+2
Clerical (III & IV)	50	51	+1	+1.8%	+1	+0
<b>Management &amp; Administrative</b>	<b>111</b>	<b>109</b>	<b>-2</b>	<b>-2.1%</b>	<b>-1</b>	<b>+3</b>
Support	40	41	+1	+1.3%	-2	-7
Maintenance/ Technical	13	13				-0
<b>General Support</b>	<b>53</b>	<b>54</b>	<b>+1</b>	<b>+1.0%</b>	<b>-2</b>	<b>-7</b>
Health Care Assistants	617	620	+3	+0.5%	-5	+17
Care, other	133	133	+0	+0.3%	-2	+0
<b>Patient &amp; Client Care</b>	<b>750</b>	<b>753</b>	<b>+3</b>	<b>+0.4%</b>	<b>-7</b>	<b>+17</b>

### CHO 3

Mar 2021 (Dec 2020 figure: 1,947)	WTE Feb 2021	WTE Mar 2021	WTE change since Feb 21	% change since Feb 21	WTE change since Dec 20	WTE change since Mar 20
<b>Overall</b>	<b>1,938</b>	<b>1,951</b>	<b>+13</b>	<b>+0.7%</b>	<b>+3</b>	<b>+137</b>
Consultants	1	1			-1	-0
Medical/ Dental, other	1	1				
<b>Medical &amp; Dental</b>	<b>2</b>	<b>2</b>			<b>-1</b>	<b>-0</b>
Nurse/ Midwife Manager	76	77	+2	+2.5%	+2	+1
Nurse/ Midwife Specialist & AN/MP	9	9	+0	+0.1%	-1	-2
Staff Nurse/ Staff Midwife	264	264	-1	-0.2%	-7	+14
Pre-registration Nurse/ Midwife Intern	8	8			-4	-4
Pre-registration Nurse Intern (COVID-19)				-100.0%		
Nursing/ Midwifery Student	8	8			+7	-4
Nursing/ Midwifery other	4	4				
<b>Nursing &amp; Midwifery</b>	<b>361</b>	<b>362</b>	<b>+1</b>	<b>+0.4%</b>	<b>+1</b>	<b>+9</b>
Therapy Professions	79	81	+2	+2.4%	-3	+7
Health Science/ Diagnostics	2	2				+2
Social Care	278	282	+5	+1.7%	-2	+35
Social Workers	16	17	+1	+4.5%	-0	+1
Psychologists	20	19	-2	-7.8%	-2	+1
H&SC, Other	11	11	+0	+1.1%	+0	-0
<b>Health &amp; Social Care Professionals</b>	<b>407</b>	<b>412</b>	<b>+6</b>	<b>+1.4%</b>	<b>-6</b>	<b>+45</b>
Management (VIII & above)	8	8				+1
Administrative/ Supervisory (V to VII)	46	46	-0	-0.6%	+1	+6
Clerical (III & IV)	59	58	-1	-1.5%	-1	-1
<b>Management &amp; Administrative</b>	<b>113</b>	<b>112</b>	<b>-1</b>	<b>-1.0%</b>	<b>+0</b>	<b>+5</b>
Support	52	53	+1	+2.7%	+0	-2
Maintenance/ Technical	20	20			+1	+6
<b>General Support</b>	<b>72</b>	<b>74</b>	<b>+1</b>	<b>+2.0%</b>	<b>+1</b>	<b>+4</b>
Health Care Assistants	802	805	+3	+0.4%	+5	+66
Care, other	181	184	+2	+1.3%	+2	+8
<b>Patient &amp; Client Care</b>	<b>983</b>	<b>989</b>	<b>+6</b>	<b>+0.6%</b>	<b>+8</b>	<b>+73</b>

## CHO 4

Mar 2021 (Dec 2020 figure: 2,556)	WTE Feb 2021	WTE Mar 2021	WTE change since Feb 21	% change since Feb 21	WTE change since Dec 20	WTE change since Mar 20
<b>Overall</b>	<b>2,569</b>	<b>2,588</b>	<b>+19</b>	<b>+0.7%</b>	<b>+32</b>	<b>+141</b>
Consultants	3	3				
Medical/ Dental, other	0	0				
<b>Medical &amp; Dental</b>	<b>3</b>	<b>3</b>				
Nurse/ Midwife Manager	88	89	+1	+1.2%	-2	-1
Nurse/ Midwife Specialist & AN/MP	14	13	-1	-6.9%	-1	
Staff Nurse/ Staff Midwife	316	317	+2	+0.5%	+5	+8
Pre-registration Nurse/ Midwife Intern	9	9			+3	+2
Pre-registration Nurse Intern (COVID-19)				-100.0%		
Nursing/ Midwifery awaiting registration	2	2			+1	+2
Nursing/ Midwifery Student	11	11			+1	+4
Nursing/ Midwifery other				-100.0%		-1
<b>Nursing &amp; Midwifery</b>	<b>429</b>	<b>431</b>	<b>+2</b>	<b>+0.4%</b>	<b>+4</b>	<b>+10</b>
Therapy Professions	105	104	-0	-0.4%	+1	+0
Social Care	243	242	-1	-0.3%	+4	+14
Social Workers	27	28	+1	+2.0%	+1	+1
Psychologists	36	36	+0	+0.5%	+0	+3
H&SC, Other	10	10			+0	+2
<b>Health &amp; Social Care Professionals</b>	<b>421</b>	<b>421</b>	<b>-0</b>	<b>-0.1%</b>	<b>+6</b>	<b>+20</b>
Management (VIII & above)	22	22	+0	+0.2%	-0	+2
Administrative/ Supervisory (V to VII)	55	58	+3	+5.0%	+0	+2
Clerical (III & IV)	90	91	+1	+0.8%	+1	+6
<b>Management &amp; Administrative</b>	<b>168</b>	<b>171</b>	<b>+4</b>	<b>+2.1%</b>	<b>+2</b>	<b>+9</b>
Support	136	136	+0	+0.0%	-2	-2
Maintenance/ Technical	12	12			-0	+2
<b>General Support</b>	<b>148</b>	<b>148</b>	<b>+0</b>	<b>+0.0%</b>	<b>-2</b>	<b>-1</b>
Health Care Assistants	1,070	1,075	+6	+0.5%	+17	+65
Care, other	331	339	+8	+2.4%	+7	+38
<b>Patient &amp; Client Care</b>	<b>1,401</b>	<b>1,414</b>	<b>+14</b>	<b>+1.0%</b>	<b>+24</b>	<b>+103</b>

## CHO 5

Mar 2021 (Dec 2020 figure: 1,563)	WTE Feb 2021	WTE Mar 2021	WTE change since Feb 21	% change since Feb 21	WTE change since Dec 20	WTE change since Mar 20
<b>Overall</b>	<b>1,585</b>	<b>1,609</b>	<b>+24</b>	<b>+1.5%</b>	<b>+46</b>	<b>+113</b>
Consultants	1	1	+0	+14.9%	+0	-0
<b>Medical &amp; Dental</b>	<b>1</b>	<b>1</b>	<b>+0</b>	<b>+14.9%</b>	<b>+0</b>	<b>-0</b>
Nurse/ Midwife Manager	71	73	+2	+2.7%	+3	+7
Nurse/ Midwife Specialist & AN/MP	4	3	-1	-25.0%	+1	+1
Staff Nurse/ Staff Midwife	161	163	+1	+0.9%	-5	-2
Public Health Nurse	6	9	+3	+52.2%	+3	+4
Pre-registration Nurse/ Midwife Intern	9	9			+9	+4
Pre-registration Nurse Intern (COVID-19)	1		-1	-100.0%		
Nursing/ Midwifery awaiting registration				-100.0%	-2	-4
Nursing/ Midwifery Student	10	9	-1	-10.0%	+8	-0
Nursing Education/Clinical	1	1			+1	+1
Nursing/ Midwifery other	1	1			+1	+1
<b>Nursing &amp; Midwifery</b>	<b>253</b>	<b>257</b>	<b>+4</b>	<b>+1.7%</b>	<b>+10</b>	<b>+10</b>
Therapy Professions	71	77	+7	+9.4%	+12	+15
Social Care	139	142	+2	+1.7%	-1	-3
Social Workers	25	25	+1	+2.8%	+1	+4
Psychologists	20	22	+2	+9.7%	+3	+7
H&SC, Other	5	5	-0	-1.5%	-0	-3
<b>Health &amp; Social Care Professionals</b>	<b>260</b>	<b>271</b>	<b>+11</b>	<b>+4.4%</b>	<b>+15</b>	<b>+20</b>
Management (VIII & above)	16	16	+0	+0.3%	+3	+4
Administrative/ Supervisory (V to VII)	48	48	+1	+1.8%	+8	+9
Clerical (III & IV)	63	68	+5	+8.4%	+6	+8
<b>Management &amp; Administrative</b>	<b>126</b>	<b>132</b>	<b>+6</b>	<b>+4.9%</b>	<b>+17</b>	<b>+22</b>
Support	11	11	-1	-8.2%	-1	-1
Maintenance/ Technical	6	6			-1	-1
<b>General Support</b>	<b>18</b>	<b>17</b>	<b>-1</b>	<b>-5.3%</b>	<b>-2</b>	<b>-2</b>
Health Care Assistants	732	736	+5	+0.6%	+5	+68
Home Help	37	37	+1	+1.4%	-2	-13
Care, other	159	156	-2	-1.5%	+3	+8
<b>Patient &amp; Client Care</b>	<b>927</b>	<b>930</b>	<b>+3</b>	<b>+0.3%</b>	<b>+6</b>	<b>+63</b>



## CHO 6

Mar 2021 (Dec 2020 figure: 1,217)	WTE Feb 2021	WTE Mar 2021	WTE change since Feb 21	% change since Feb 21	WTE change since Dec 20	WTE change since Mar 20
<b>Overall</b>	<b>1,227</b>	<b>1,209</b>	<b>-18</b>	<b>-1.5%</b>	<b>-8</b>	<b>+38</b>
Consultants	3	3				
Registrars	1	1			+1	+1
Medical/ Dental, other	1	1				
<b>Medical &amp; Dental</b>	<b>5</b>	<b>5</b>			<b>+1</b>	<b>+1</b>
Nurse/ Midwife Manager	44	42	-2	-3.8%	-1	-1
Staff Nurse/ Staff Midwife	143	144	+0	+0.1%	+1	+3
<b>Nursing &amp; Midwifery</b>	<b>187</b>	<b>186</b>	<b>-1</b>	<b>-0.8%</b>	<b>+0</b>	<b>+2</b>
Therapy Professions	45	45	-1	-1.2%	+2	+4
Social Care	365	359	-6	-1.7%	-2	+35
Social Workers	9	10	+1	+11.2%	+0	+1
Psychologists	14	14	+0	+0.5%	+1	-2
H&SC, Other	1	1	-0	-6.5%	+0	-1
<b>Health &amp; Social Care Professionals</b>	<b>435</b>	<b>429</b>	<b>-6</b>	<b>-1.4%</b>	<b>+1</b>	<b>+38</b>
Management (VIII & above)	30	30	+0	+0.5%	+0	+1
Administrative/ Supervisory (V to VII)	54	56	+2	+4.4%	+2	+0
Clerical (III & IV)	60	60	-0	-0.4%	+4	+3
<b>Management &amp; Administrative</b>	<b>144</b>	<b>147</b>	<b>+2</b>	<b>+1.6%</b>	<b>+7</b>	<b>+4</b>
Support	22	22	-0	-0.8%	-4	-11
Maintenance/ Technical	5	5				-3
<b>General Support</b>	<b>27</b>	<b>27</b>	<b>-0</b>	<b>-0.7%</b>	<b>-4</b>	<b>-14</b>
Health Care Assistants	191	187	-4	-2.2%	+3	+15
Care, other	238	229	-9	-3.7%	-16	-7
<b>Patient &amp; Client Care</b>	<b>429</b>	<b>416</b>	<b>-13</b>	<b>-3.1%</b>	<b>-13</b>	<b>+7</b>

## CHO 7

Mar 2021 (Dec 2020 figure: 3,103)	WTE Feb 2021	WTE Mar 2021	WTE change since Feb 21	% change since Feb 21	WTE change since Dec 20	WTE change since Mar 20
<b>Overall</b>	<b>3,075</b>	<b>3,074</b>	<b>-2</b>	<b>-0.1%</b>	<b>-30</b>	<b>+92</b>
Consultants	1	1				
Registrars	3	3	+0	+2.0%	+0	+0
SHO/ Interns	7	8	+1	+13.6%	+1	+1
Medical/ Dental, other	1	1				
<b>Medical &amp; Dental</b>	<b>12</b>	<b>13</b>	<b>+1</b>	<b>+8.8%</b>	<b>+1</b>	<b>+1</b>
Nurse/ Midwife Manager	120	125	+5	+4.4%	+7	+3
Nurse/ Midwife Specialist & AN/MP	4	4				-1
Staff Nurse/ Staff Midwife	378	375	-3	-0.7%	-3	+2
<i>Pre-registration Nurse/ Midwife Intern</i>	7	8	+1	+7.1%	+8	
Nursing/ Midwifery Student	7	8	+1	+7.1%	+8	
Nursing/ Midwifery other	2	3	+1	+66.7%	+1	+2
<b>Nursing &amp; Midwifery</b>	<b>511</b>	<b>515</b>	<b>+4</b>	<b>+0.8%</b>	<b>+13</b>	<b>+6</b>
Therapy Professions	130	133	+3	+2.3%	-5	+7
Health Science/ Diagnostics	3	4	+1	+20.0%	+1	+1
Social Care	385	386	+0	+0.1%	-3	+25
Social Workers	33	33	+0	+0.3%	+1	-2
Psychologists	29	29	+0	+0.0%	-3	-0
Pharmacy	4	4	+0	+0.7%	+0	-0
H&SC, Other	2	2				
<b>Health &amp; Social Care Professionals</b>	<b>587</b>	<b>591</b>	<b>+4</b>	<b>+0.7%</b>	<b>-9</b>	<b>+29</b>
Management (VIII & above)	45	45	+1	+1.4%	+3	+9
Administrative/ Supervisory (V to VII)	91	90	-1	-0.7%	-2	+9
Clerical (III & IV)	100	98	-2	-2.2%	-3	-1
<b>Management &amp; Administrative</b>	<b>236</b>	<b>233</b>	<b>-2</b>	<b>-0.9%</b>	<b>-2</b>	<b>+17</b>
Support	150	148	-2	-1.1%	-7	-14
Maintenance/ Technical	32	33	+1	+3.3%	-0	+2
<b>General Support</b>	<b>181</b>	<b>181</b>	<b>-1</b>	<b>-0.3%</b>	<b>-7</b>	<b>-12</b>
Health Care Assistants	1,126	1,125	-2	-0.1%	-22	+32
Home Help	17	17	-1	-3.1%	-0	-2
Care, other	406	400	-6	-1.6%	-3	+20
<b>Patient &amp; Client Care</b>	<b>1,549</b>	<b>1,541</b>	<b>-9</b>	<b>-0.6%</b>	<b>-25</b>	<b>+50</b>

## CHO 8

Mar 2021 (Dec 2020 figure: 2,205)	WTE Feb 2021	WTE Mar 2021	WTE change since Feb 21	% change since Feb 21	WTE change since Dec 20	WTE change since Mar 20
<b>Overall</b>	<b>2,218</b>	<b>2,221</b>	<b>+3</b>	<b>+0.1%</b>	<b>+15</b>	<b>+82</b>
Consultants				-100.0%	-1	-1
Registrars	1	1				
Medical/ Dental, other	1	1				
<b>Medical &amp; Dental</b>	<b>2</b>	<b>2</b>			<b>-1</b>	<b>-1</b>
Nurse/ Midwife Manager	121	121	+0	+0.3%	+2	+7
Nurse/ Midwife Specialist & AN/MP	5	5	+0	+0.2%	-1	-2
Staff Nurse/ Staff Midwife	324	321	-4	-1.2%	+8	+3
Public Health Nurse	1	1			-0	
Pre-registration Nurse/ Midwife Intern	6	6	-0	-2.9%	+6	-7
Pre-registration Nurse Intern (COVID-19)				-100.0%		
Nursing/ Midwifery Student	6	6	-0	-2.9%	+2	-7
Nursing/ Midwifery other	7	7	+0	+0.1%	+0	-0
<b>Nursing &amp; Midwifery</b>	<b>464</b>	<b>461</b>	<b>-4</b>	<b>-0.8%</b>	<b>+12</b>	<b>+1</b>
Therapy Professions	97	94	-3	-2.6%	-4	+2
Health Science/ Diagnostics	2	2				
Social Care	377	376	-2	-0.5%	-4	+14
Social Workers	25	25	+0	+1.0%	+1	+1
Psychologists	24	25	+0	+1.7%	+2	+2
H&SC, Other	6	7	+0	+6.5%	+1	+0
<b>Health &amp; Social Care Professionals</b>	<b>532</b>	<b>529</b>	<b>-3</b>	<b>-0.6%</b>	<b>-4</b>	<b>+20</b>
Management (VIII & above)	14	14	+0	+0.2%	+1	+4
Administrative/ Supervisory (V to VII)	54	54	+1	+1.3%	-2	-4
Clerical (III & IV)	89	89	-0	-0.3%	+2	+2
<b>Management &amp; Administrative</b>	<b>157</b>	<b>158</b>	<b>+0</b>	<b>+0.3%</b>	<b>+0</b>	<b>+1</b>
Support	41	41	-0	-0.9%	-0	-3
Maintenance/ Technical	13	13			-1	-3
<b>General Support</b>	<b>54</b>	<b>54</b>	<b>-0</b>	<b>-0.7%</b>	<b>-1</b>	<b>-5</b>
Health Care Assistants	871	879	+8	+0.9%	+7	+64
Home Help	23	22	-1	-5.5%	-1	-1
Care, other	114	117	+3	+2.5%	+4	+3
<b>Patient &amp; Client Care</b>	<b>1,008</b>	<b>1,018</b>	<b>+10</b>	<b>+0.9%</b>	<b>+10</b>	<b>+67</b>

## CHO 9

Mar 2021 (Dec 2020 figure: 3,285)	WTE Feb 2021	WTE Mar 2021	WTE change since Feb 21	% change since Feb 21	WTE change since Dec 20	WTE change since Mar 20
<b>Overall</b>	<b>3,282</b>	<b>3,298</b>	<b>+16</b>	<b>+0.5%</b>	<b>+14</b>	<b>+88</b>
Consultants	11	10	-1	-8.9%	-1	-0
Registrars	3	3			+1	-1
SHO/ Interns				-100.0%	-2	-1
Medical/ Dental, other	6	6				
<b>Medical &amp; Dental</b>	<b>20</b>	<b>19</b>	<b>-1</b>	<b>-4.9%</b>	<b>-2</b>	<b>-2</b>
Nurse/ Midwife Manager	195	193	-2	-1.0%	-3	-1
Nurse/ Midwife Specialist & AN/MP	14	13	-1	-6.4%	+1	+4
Staff Nurse/ Staff Midwife	519	520	+2	+0.3%	+8	+9
Pre-registration Nurse/ Midwife Intern	18	18			+10	+3
Pre-registration Nurse Intern (COVID-19)	3		-3	-100.0%		
Nursing/ Midwifery Student	21	18	-3	-14.3%	+5	+3
Nursing/ Midwifery other	8	8	+0	+0.1%	+0	+1
<b>Nursing &amp; Midwifery</b>	<b>757</b>	<b>753</b>	<b>-4</b>	<b>-0.6%</b>	<b>+11</b>	<b>+16</b>
Therapy Professions	194	192	-1	-0.7%	+6	+10
Health Science/ Diagnostics	14	14			+1	+1
Social Care	751	759	+8	+1.1%	+19	+58
Social Workers	48	49	+0	+0.6%	-1	+1
Psychologists	62	62	-0	-0.0%	-2	+2
Pharmacy	2	2				
H&SC, Other	19	18	-0	-1.9%	-0	-0
<b>Health &amp; Social Care Professionals</b>	<b>1,089</b>	<b>1,096</b>	<b>+7</b>	<b>+0.6%</b>	<b>+23</b>	<b>+72</b>
Management (VIII & above)	42	45	+4	+9.0%	+4	+9
Administrative/ Supervisory (V to VII)	106	113	+7	+6.9%	+13	+24
Clerical (III & IV)	117	126	+9	+7.5%	-0	+1
<b>Management &amp; Administrative</b>	<b>265</b>	<b>285</b>	<b>+20</b>	<b>+7.5%</b>	<b>+17</b>	<b>+34</b>
Support	146	147	+1	+0.8%	+2	-49
Maintenance/ Technical	22	22			-1	+0
<b>General Support</b>	<b>168</b>	<b>169</b>	<b>+1</b>	<b>+0.7%</b>	<b>+1</b>	<b>-49</b>
Health Care Assistants	883	876	-7	-0.8%	-35	+12
Care, other	100	100	+0	+0.2%	-2	+4
<b>Patient &amp; Client Care</b>	<b>983</b>	<b>976</b>	<b>-6</b>	<b>-0.7%</b>	<b>-37</b>	<b>+17</b>

## other Community Services

Mar 2021 (Dec 2020 figure: 6)	WTE Feb 2021	WTE Mar 2021	WTE change since Feb 21	% change since Feb 21	WTE change since Dec 20	WTE change since Mar 20
<b>Overall</b>	<b>6</b>	<b>6</b>	<b>+0</b>	<b>+0.5%</b>		<b>+1</b>
Management (VIII & above)	1	1				
Administrative/ Supervisory (V to VII)	3	3				+1
Clerical (III & IV)	2	2	+0	+1.6%		
<b>Management &amp; Administrative</b>	<b>6</b>	<b>6</b>	<b>+0</b>	<b>+0.5%</b>		<b>+1</b>

## Social Care Disability Services Employment by CHO & Admin : Mar 2021

Mar 2021 (Dec 2020 figure: 18,944)	WTE Feb 2021	WTE Mar 2021	WTE change since Feb 21	% change since Feb 21	WTE change since Dec 20	WTE change since Mar 20
<b>Overall</b>	<b>18,983</b>	<b>19,039</b>	<b>+56</b>	<b>+0.3%</b>	<b>+95</b>	<b>+770</b>
<b>CHO 1</b>	<b>1,575</b>	<b>1,575</b>	<b>-0</b>	<b>-0.0%</b>	<b>+28</b>	<b>+51</b>
Health Service Executive	221	218	-3	-1.3%	+0	+11
Bros. of Charity, West Region	1,287	1,292	+4	+0.3%	-6	+17
Section 38 Voluntary Agencies	1,287	1,292	+4	+0.3%	-6	+17
<b>CHO 2</b>	<b>1,508</b>	<b>1,510</b>	<b>+1</b>	<b>+0.1%</b>	<b>-6</b>	<b>+29</b>
Health Service Executive	146	144	-1	-1.0%	-1	+24
Bros. of Charity, Clare	377	383	+6	+1.5%	+11	+51
Bros. of Charity, Limerick	574	578	+4	+0.7%	-14	+51
Daughters of Charity, Limerick	550	553	+4	+0.7%	+4	+10
Daughters of Charity, Roscrea	290	291	+1	+0.4%	+2	+2
Section 38 Voluntary Agencies	1,792	1,806	+14	+0.8%	+4	+113
<b>CHO 3</b>	<b>1,938</b>	<b>1,951</b>	<b>+13</b>	<b>+0.7%</b>	<b>+3</b>	<b>+137</b>
Health Service Executive	319	324	+5	+1.4%	+10	+21
Bros. of Charity, Southern	783	786	+3	+0.4%	+10	+51
Cope Foundation	1,146	1,152	+6	+0.5%	+5	+54
St. John of God, Kerry	321	326	+5	+1.6%	+6	+17
Section 38 Voluntary Agencies	2,250	2,264	+14	+0.6%	+22	+121
<b>CHO 4</b>	<b>2,569</b>	<b>2,588</b>	<b>+19</b>	<b>+0.7%</b>	<b>+32</b>	<b>+141</b>
Health Service Executive	419	436	+18	+4.2%	+42	+51
Bros. of Charity, Waterford	667	676	+10	+1.4%	+8	+54
Carriglea Cairde Services	215	212	-2	-1.1%	-1	+1
St. Patrick's, Kilkenny	284	284	-1	-0.3%	-3	+6
Section 38 Voluntary Agencies	1,166	1,172	+6	+0.6%	+4	+61
<b>CHO 5</b>	<b>1,585</b>	<b>1,609</b>	<b>+24</b>	<b>+1.5%</b>	<b>+46</b>	<b>+113</b>
Health Service Executive	244	243	-1	-0.3%	-0	+12
Children's Sunshine Home	57	57			+1	-1
St. John of God (IDS)	459	458	-0	-0.1%	-9	+6
Sunbeam House Services	468	451	-17	-3.7%	+1	+21
Section 38 Voluntary Agencies	983	965	-18	-1.8%	-8	+26
<b>CHO 6</b>	<b>1,227</b>	<b>1,209</b>	<b>-18</b>	<b>-1.5%</b>	<b>-8</b>	<b>+38</b>
Health Service Executive	129	131	+1	+1.0%	-5	+18
Cheeverstown House	395	394	-1	-0.1%	-1	-4
Kare, Newbridge, Co Kildare	380	374	-5	-1.4%	-3	+15
Peamount Hospital (Newcastle)	475	475	+0	+0.0%	-7	-18
Stewart's Hospital, (Palmerstown)	915	921	+7	+0.7%	+8	+64
St. John of God Liffey Services	782	778	-4	-0.5%	-22	+16
Section 38 Voluntary Agencies	2,946	2,943	-3	-0.1%	-25	+73
<b>CHO 7</b>	<b>3,075</b>	<b>3,074</b>	<b>-2</b>	<b>-0.1%</b>	<b>-30</b>	<b>+92</b>
Health Service Executive	608	604	-4	-0.6%	-6	-4
Muiriosa Foundation, Laois/Offaly	335	335	-0	-0.1%	+14	+35
Muiriosa Foundation, Longford/Westmeath	287	292	+5	+1.9%	+8	+23
Muiriosa Foundation, South Kildare	342	343	+1	+0.4%	+1	+13
St. John of God, Drumcar	646	646			-2	+15

Mar 2021 (Dec 2020 figure: 18,944)	WTE Feb 2021	WTE Mar 2021	WTE change since Feb 21	% change since Feb 21	WTE change since Dec 20	WTE change since Mar 20
<b>Overall</b>	<b>18,983</b>	<b>19,039</b>	<b>+56</b>	<b>+0.3%</b>	<b>+95</b>	<b>+770</b>
<b>Section 38 Voluntary Agencies</b>	<b>1,610</b>	<b>1,616</b>	<b>+6</b>	<b>+0.4%</b>	<b>+22</b>	<b>+86</b>
<b>CHO 8</b>	<b>2,218</b>	<b>2,221</b>	<b>+3</b>	<b>+0.1%</b>	<b>+15</b>	<b>+82</b>
<b>Health Service Executive</b>	<b>481</b>	<b>500</b>	<b>+19</b>	<b>+3.9%</b>	<b>+27</b>	<b>+48</b>
Central Remedial Clinic	298	298	+0	+0.1%	+2	+14
Daughters of Charity, Dublin	1,075	1,075	-1	-0.1%	+11	+24
St. Michael's House, Dublin	1,428	1,426	-2	-0.2%	-27	+2
<b>Section 38 Voluntary Agencies</b>	<b>2,801</b>	<b>2,799</b>	<b>-3</b>	<b>-0.1%</b>	<b>-14</b>	<b>+40</b>
<b>CHO 9</b>	<b>3,282</b>	<b>3,298</b>	<b>+16</b>	<b>+0.5%</b>	<b>+14</b>	<b>+88</b>
<b>other Community Services</b>	<b>6</b>	<b>6</b>	<b>+0</b>	<b>+0.5%</b>		<b>+1</b>

## Social Care Disability Services Employment by CHO Mar 2021

### Bros. of Charity, Clare

Mar 2021 (Dec 2020 figure: 372)	WTE Feb 2021	WTE Mar 2021	WTE change since Feb 21	% change since Feb 21	WTE change since Dec 20	WTE change since Mar 20
<b>Overall</b>	<b>377</b>	<b>383</b>	<b>+6</b>	<b>+1.5%</b>	<b>+11</b>	<b>+51</b>
Consultants	0	0			-0	-0
<b>Medical &amp; Dental</b>	<b>0</b>	<b>0</b>			<b>-0</b>	<b>-0</b>
Staff Nurse/ Staff Midwife	3	3	-0	-0.7%	+1	+1
<i>Pre-registration Nurse Intern (COVID-19)</i>				-100.0%		
Nursing/ Midwifery Student				-100.0%	-1	
<b>Nursing &amp; Midwifery</b>	<b>3</b>	<b>3</b>	<b>-0</b>	<b>-0.7%</b>	<b>-0</b>	<b>+1</b>
Social Care	83	84	+1	+1.2%	-1	+3
Social Workers	3	3				+0
Psychologists	3	2	-0	-14.2%	-0	-0
H&SC, Other	4	4				
<b>Health &amp; Social Care Professionals</b>	<b>93</b>	<b>93</b>	<b>+1</b>	<b>+0.6%</b>	<b>-1</b>	<b>+2</b>
Management (VIII & above)	1	1				
Administrative/ Supervisory (V to VII)	5	5			+0	
Clerical (III & IV)	5	5			+0	+0
<b>Management &amp; Administrative</b>	<b>11</b>	<b>11</b>			<b>+0</b>	<b>+0</b>
Health Care Assistants	238	243	+5	+2.2%	+11	+46
Care, other	33	33	-0	-0.1%	+2	+1
<b>Patient &amp; Client Care</b>	<b>271</b>	<b>276</b>	<b>+5</b>	<b>+1.9%</b>	<b>+12</b>	<b>+47</b>

Mar 2021 (Dec 2020 figure: 592)	WTE Feb 2021	WTE Mar 2021	WTE change since Feb 21	% change since Feb 21	WTE change since Dec 20	WTE change since Mar 20
<b>Overall</b>	<b>574</b>	<b>578</b>	<b>+4</b>	<b>+0.7%</b>	<b>-14</b>	<b>+51</b>
Consultants	1	1			-1	
<b>Medical &amp; Dental</b>	<b>1</b>	<b>1</b>			<b>-1</b>	
Nurse/ Midwife Manager	29	29	-0	-0.5%	+0	+2
Nurse/ Midwife Specialist & AN/MP	4	4				
Staff Nurse/ Staff Midwife	91	91	+1	+0.6%	-7	+4
<b>Nursing &amp; Midwifery</b>	<b>123</b>	<b>124</b>	<b>+0</b>	<b>+0.3%</b>	<b>-6</b>	<b>+6</b>
Therapy Professions	13	14	+1	+7.9%	-1	+1
Social Care	100	102	+2	+1.8%	-2	+15
Social Workers	5	6	+1	+18.2%	+1	+1
Psychologists	6	6	+0	+0.7%	+0	
H&SC, Other	1	0	-0	-43.3%	-0	-1
<b>Health &amp; Social Care Professionals</b>	<b>125</b>	<b>129</b>	<b>+4</b>	<b>+2.9%</b>	<b>-2</b>	<b>+17</b>
Management (VIII & above)	2	2				
Administrative/ Supervisory (V to VII)	7	7	-0	-1.3%	+1	+1
Clerical (III & IV)	10	10	-0	-0.2%	-1	-2
<b>Management &amp; Administrative</b>	<b>19</b>	<b>19</b>	<b>-0</b>	<b>-0.6%</b>	<b>-0</b>	<b>-1</b>
Support	5	7	+1	+26.7%	+1	+0
Maintenance/ Technical	2	2				
<b>General Support</b>	<b>7</b>	<b>9</b>	<b>+1</b>	<b>+19.4%</b>	<b>+1</b>	<b>+0</b>
Health Care Assistants	203	198	-5	-2.4%	-6	+20
Care, other	96	99	+4	+3.7%	+1	+8
<b>Patient &amp; Client Care</b>	<b>299</b>	<b>298</b>	<b>-1</b>	<b>-0.5%</b>	<b>-5</b>	<b>+28</b>



Mar 2021 (Dec 2020 figure: 776)	WTE Feb 2021	WTE Mar 2021	WTE change since Feb 21	% change since Feb 21	WTE change since Dec 20	WTE change since Mar 20
<b>Overall</b>	<b>783</b>	<b>786</b>	<b>+3</b>	<b>+0.4%</b>	<b>+10</b>	<b>+51</b>
Nurse/ Midwife Manager	12	13	+1	+4.9%	-2	-3
Nurse/ Midwife Specialist & AN/MP	3	2	-1	-34.0%	-1	-1
Staff Nurse/ Staff Midwife	56	57	+0	+0.7%	+1	-3
<b>Nursing &amp; Midwifery</b>	<b>71</b>	<b>71</b>			<b>-2</b>	<b>-7</b>
Therapy Professions	47	47	+0	+0.6%	+1	+4
Social Care	128	126	-1	-1.0%	+4	-1
Social Workers	18	18	+1	+3.1%	+1	+1
Psychologists	21	21	+0	+0.6%	+0	+3
<b>Health &amp; Social Care Professionals</b>	<b>213</b>	<b>213</b>	<b>-0</b>	<b>-0.1%</b>	<b>+6</b>	<b>+7</b>
Management (VIII & above)	8	8				-0
Administrative/ Supervisory (V to VII)	11	12	+1	+9.0%	+2	+2
Clerical (III & IV)	34	35	+1	+1.7%	-1	+1
<b>Management &amp; Administrative</b>	<b>53</b>	<b>54</b>	<b>+2</b>	<b>+3.0%</b>	<b>+1</b>	<b>+3</b>
Support	12	13	+0	+1.5%	-1	-2
Maintenance/ Technical	3	3				+1
<b>General Support</b>	<b>15</b>	<b>15</b>	<b>+0</b>	<b>+1.2%</b>	<b>-1</b>	<b>-1</b>
Health Care Assistants	227	224	-3	-1.5%	+2	+18
Care, other	204	209	+5	+2.6%	+5	+31
<b>Patient &amp; Client Care</b>	<b>431</b>	<b>433</b>	<b>+2</b>	<b>+0.4%</b>	<b>+7</b>	<b>+49</b>

Mar 2021 (Dec 2020 figure: 668)	WTE Feb 2021	WTE Mar 2021	WTE change since Feb 21	% change since Feb 21	WTE change since Dec 20	WTE change since Mar 20
<b>Overall</b>	<b>667</b>	<b>676</b>	<b>+10</b>	<b>+1.4%</b>	<b>+8</b>	<b>+54</b>
Consultants	1	1	+0	+14.9%	+0	-0
<b>Medical &amp; Dental</b>	<b>1</b>	<b>1</b>	<b>+0</b>	<b>+14.9%</b>	<b>+0</b>	<b>-0</b>
Nurse/ Midwife Manager	22	22			-0	+0
Staff Nurse/ Staff Midwife	47	49	+2	+3.2%	-1	+3
<i>Pre-registration Nurse/ Midwife Intern</i>	6	6			+6	+3
Nursing/ Midwifery Student	6	6			+6	+3
<b>Nursing &amp; Midwifery</b>	<b>76</b>	<b>77</b>	<b>+2</b>	<b>+2.0%</b>	<b>+5</b>	<b>+5</b>
Therapy Professions	2	2			+1	-1
Social Care	69	71	+2	+2.6%	+1	+4
Social Workers	7	8	+1	+14.9%	-0	-1
Psychologists	4	4				
H&SC, Other	4	4	-0	-2.4%		-1
<b>Health &amp; Social Care Professionals</b>	<b>86</b>	<b>88</b>	<b>+3</b>	<b>+3.2%</b>	<b>+1</b>	<b>+1</b>
Management (VIII & above)	5	5	+0	+1.0%		
Administrative/ Supervisory (V to VII)	16	16	-0	-0.5%	+0	+2
Clerical (III & IV)	25	26	+1	+2.8%	-1	+1
<b>Management &amp; Administrative</b>	<b>47</b>	<b>47</b>	<b>+1</b>	<b>+1.5%</b>	<b>-1</b>	<b>+3</b>
Support	1	1			-0	
Maintenance/ Technical	3	3				
<b>General Support</b>	<b>4</b>	<b>4</b>			<b>-0</b>	
Health Care Assistants	356	363	+7	+1.9%	+1	+42
Care, other	97	95	-2	-2.4%	+1	+2
<b>Patient &amp; Client Care</b>	<b>454</b>	<b>458</b>	<b>+4</b>	<b>+1.0%</b>	<b>+2</b>	<b>+45</b>

## Carriglea Cairde Services

Mar 2021 (Dec 2020 figure: 214)	WTE Feb 2021	WTE Mar 2021	WTE change since Feb 21	% change since Feb 21	WTE change since Dec 20	WTE change since Mar 20
<b>Overall</b>	<b>215</b>	<b>212</b>	<b>-2</b>	<b>-1.1%</b>	<b>-1</b>	<b>+1</b>
Nurse/ Midwife Manager	13	13	-0	-0.1%	+0	+0
Staff Nurse/ Staff Midwife	24	24	-1	-2.1%	-3	-1
<i>Pre-registration Nurse/ Midwife Intern</i>				-100.0%		-2
Nursing/ Midwifery Student				-100.0%		-2
<b>Nursing &amp; Midwifery</b>	<b>37</b>	<b>37</b>	<b>-1</b>	<b>-1.4%</b>	<b>-3</b>	<b>-2</b>
Social Care	29	28	-0	-0.3%	-2	-7
<b>Health &amp; Social Care Professionals</b>	<b>29</b>	<b>28</b>	<b>-0</b>	<b>-0.3%</b>	<b>-2</b>	<b>-7</b>
Management (VIII & above)	2	2				
Administrative/ Supervisory (V to VII)	3	3				
Clerical (III & IV)	6	6	+0	+0.6%	+0	+0
<b>Management &amp; Administrative</b>	<b>11</b>	<b>11</b>	<b>+0</b>	<b>+0.4%</b>	<b>+0</b>	<b>+0</b>
Support	6	5	-1	-14.7%	-1	+1
Maintenance/ Technical	1	1				
<b>General Support</b>	<b>8</b>	<b>7</b>	<b>-1</b>	<b>-12.0%</b>	<b>-1</b>	<b>+1</b>
Health Care Assistants	86	85	-1	-0.9%	+5	+14
Care, other	45	44	-0	-0.2%	-0	-5
<b>Patient &amp; Client Care</b>	<b>130</b>	<b>129</b>	<b>-1</b>	<b>-0.7%</b>	<b>+5</b>	<b>+9</b>

## Central Remedial Clinic

Mar 2021 (Dec 2020 figure: 296)	WTE Feb 2021	WTE Mar 2021	WTE change since Feb 21	% change since Feb 21	WTE change since Dec 20	WTE change since Mar 20
<b>Overall</b>	<b>298</b>	<b>298</b>	<b>+0</b>	<b>+0.1%</b>	<b>+2</b>	<b>+14</b>
Consultants	1	1				
Medical/ Dental, other	0	0				
<b>Medical &amp; Dental</b>	<b>2</b>	<b>2</b>				
Nurse/ Midwife Manager	2	2				
Nurse/ Midwife Specialist & AN/MP	2	2				+1
Staff Nurse/ Staff Midwife	4	4			-1	
Nursing/ Midwifery other	1	1				+1
<b>Nursing &amp; Midwifery</b>	<b>8</b>	<b>8</b>			<b>-1</b>	<b>+2</b>
Therapy Professions	78	78			+0	-0
Health Science/ Diagnostics	14	14			+1	+1
Social Workers	9	9			+1	+1
Psychologists	13	13				+2
<b>Health &amp; Social Care Professionals</b>	<b>114</b>	<b>114</b>			<b>+2</b>	<b>+4</b>
Management (VIII & above)	7	7				
Administrative/ Supervisory (V to VII)	14	14			-1	-1
Clerical (III & IV)	34	34				+2
<b>Management &amp; Administrative</b>	<b>56</b>	<b>56</b>			<b>-1</b>	<b>+1</b>
Support	13	13			+1	-2
Maintenance/ Technical	2	2				+1
<b>General Support</b>	<b>15</b>	<b>15</b>			<b>+1</b>	<b>-1</b>
Health Care Assistants	58	57	-1	-0.9%	-1	+1
Care, other	45	46	+1	+1.5%	+2	+7
<b>Patient &amp; Client Care</b>	<b>103</b>	<b>103</b>	<b>+0</b>	<b>+0.2%</b>	<b>+1</b>	<b>+8</b>

Mar 2021 (Dec 2020 figure: 395)	WTE Feb 2021	WTE Mar 2021	WTE change since Feb 21	% change since Feb 21	WTE change since Dec 20	WTE change since Mar 20
<b>Overall</b>	<b>395</b>	<b>394</b>	<b>-1</b>	<b>-0.1%</b>	<b>-1</b>	<b>-4</b>
Consultants	0	0				
Medical/ Dental, other	1	1				
<b>Medical &amp; Dental</b>	<b>1</b>	<b>1</b>				
Nurse/ Midwife Manager	25	28	+3	+12.0%	+1	+1
Nurse/ Midwife Specialist & AN/MP	2	2				
Staff Nurse/ Staff Midwife	107	104	-3	-2.8%	-2	-0
<b>Nursing &amp; Midwifery</b>	<b>134</b>	<b>134</b>			<b>-1</b>	<b>+1</b>
Therapy Professions	13	13				+2
Social Care	37	38	+1	+2.7%	+4	+2
Social Workers	5	5			+1	-1
Psychologists	3	3			-2	-2
Pharmacy	0	0				
H&SC, Other	2	2				
<b>Health &amp; Social Care Professionals</b>	<b>60</b>	<b>61</b>	<b>+1</b>	<b>+1.7%</b>	<b>+3</b>	<b>+2</b>
Management (VIII & above)	3	3				+2
Administrative/ Supervisory (V to VII)	14	15	+1	+7.3%	-0	+1
Clerical (III & IV)	12	11	-1	-8.1%	-1	-1
<b>Management &amp; Administrative</b>	<b>29</b>	<b>29</b>			<b>-1</b>	<b>+2</b>
Support	27	27	-0	-0.3%	-0	-1
Maintenance/ Technical	4	4				
<b>General Support</b>	<b>30</b>	<b>30</b>	<b>-0</b>	<b>-0.3%</b>	<b>-0</b>	<b>-1</b>
Health Care Assistants	128	126	-2	-1.2%	-3	-8
Care, other	12	12			+2	+0
<b>Patient &amp; Client Care</b>	<b>140</b>	<b>138</b>	<b>-1</b>	<b>-1.1%</b>	<b>-1</b>	<b>-7</b>

## Children's Sunshine Home

Mar 2021 (Dec 2020 figure: 56)	WTE Feb 2021	WTE Mar 2021	WTE change since Feb 21	% change since Feb 21	WTE change since Dec 20	WTE change since Mar 20
<b>Overall</b>	<b>57</b>	<b>57</b>			<b>+1</b>	<b>-1</b>
Nurse/ Midwife Manager	8	8				
Staff Nurse/ Staff Midwife	18	18				-1
<b>Nursing &amp; Midwifery</b>	<b>26</b>	<b>26</b>				<b>-1</b>
Therapy Professions	2	2			+1	-0
Social Workers				-100.0%	-1	-1
<b>Health &amp; Social Care Professionals</b>	<b>2</b>	<b>2</b>			<b>-0</b>	<b>-1</b>
Management (VIII & above)	3	3			+1	
Administrative/ Supervisory (V to VII)	4	4				
<i>General Administrative (III &amp; IV)</i>	1	1				
Clerical (III & IV)	1	1				
<b>Management &amp; Administrative</b>	<b>8</b>	<b>8</b>			<b>+1</b>	
Support	3	3				
<b>General Support</b>	<b>3</b>	<b>3</b>				
Health Care Assistants	13	13				-1
Care, other	5	5				+2
<b>Patient &amp; Client Care</b>	<b>18</b>	<b>18</b>				<b>+1</b>

Mar 2021 (Dec 2020 figure: 1,147)	WTE Feb 2021	WTE Mar 2021	WTE change since Feb 21	% change since Feb 21	WTE change since Dec 20	WTE change since Mar 20
<b>Overall</b>	<b>1,146</b>	<b>1,152</b>	<b>+6</b>	<b>+0.5%</b>	<b>+5</b>	<b>+54</b>
Nurse/ Midwife Manager	42	42				+1
Nurse/ Midwife Specialist & AN/MP	11	11				+1
Staff Nurse/ Staff Midwife	180	180			+3	+10
Pre-registration Nurse/ Midwife Intern	8	8			+2	+2
Pre-registration Nurse Intern (COVID-19)				-100.0%		
Nursing/ Midwifery Student	8	8			+0	+2
Nursing/ Midwifery other				-100.0%		-1
<b>Nursing &amp; Midwifery</b>	<b>241</b>	<b>241</b>			<b>+3</b>	<b>+14</b>
Therapy Professions	37	37			-0	-1
Social Care	43	43				+11
Social Workers	9	9				
Psychologists	11	11				+0
H&SC, Other	3	3				
<b>Health &amp; Social Care Professionals</b>	<b>102</b>	<b>102</b>	<b>-0</b>	<b>-0.0%</b>	<b>-0</b>	<b>+11</b>
Management (VIII & above)	7	7				+1
Administrative/ Supervisory (V to VII)	23	23				+4
Clerical (III & IV)	26	26				+2
<b>Management &amp; Administrative</b>	<b>55</b>	<b>55</b>				<b>+7</b>
Support	78	78				+1
Maintenance/ Technical	7	7			+0	+1
<b>General Support</b>	<b>85</b>	<b>85</b>				<b>+2</b>
Health Care Assistants	583	589	+6	+1.0%	+2	+19
Care, other	81	81				+1
<b>Patient &amp; Client Care</b>	<b>663</b>	<b>669</b>	<b>+6</b>	<b>+0.9%</b>	<b>+2</b>	<b>+20</b>

## Daughters of Charity, Dublin

Mar 2021 (Dec 2020 figure: 1,063)	WTE Feb 2021	WTE Mar 2021	WTE change since Feb 21	% change since Feb 21	WTE change since Dec 20	WTE change since Mar 20
<b>Overall</b>	<b>1,075</b>	<b>1,075</b>	<b>-1</b>	<b>-0.1%</b>	<b>+11</b>	<b>+24</b>
Consultants	2	2			-0	+0
Medical/ Dental, other	2	2				
<b>Medical &amp; Dental</b>	<b>4</b>	<b>4</b>			<b>-0</b>	<b>+0</b>
Nurse/ Midwife Manager	63	63			+1	+1
Nurse/ Midwife Specialist & AN/MP	12	12	-1	-7.2%	+1	+3
Staff Nurse/ Staff Midwife	187	186	-2	-0.9%	-3	+1
Pre-registration Nurse/ Midwife Intern	10	11	+1	+10.5%	+3	+3
Pre-registration Nurse Intern (COVID-19)				-100.0%		
Nursing/ Midwifery Student	10	11	+1	+10.5%	+1	+3
Nursing/ Midwifery other	4	4				
<b>Nursing &amp; Midwifery</b>	<b>277</b>	<b>275</b>	<b>-2</b>	<b>-0.6%</b>	<b>+1</b>	<b>+8</b>
Therapy Professions	36	35	-2	-4.1%	+3	+0
Social Care	177	183	+6	+3.2%	+10	+15
Social Workers	13	13			-0	+1
Psychologists	11	12	+1	+8.8%	+1	+3
Pharmacy	2	2				
H&SC, Other	5	4	-1	-20.3%	-1	-1
<b>Health &amp; Social Care Professionals</b>	<b>245</b>	<b>249</b>	<b>+4</b>	<b>+1.7%</b>	<b>+14</b>	<b>+19</b>
Management (VIII & above)	9	9				+3
Administrative/ Supervisory (V to VII)	28	28			+1	+1
Clerical (III & IV)	31	31			-1	-1
<b>Management &amp; Administrative</b>	<b>68</b>	<b>68</b>			<b>+0</b>	<b>+3</b>
Support	77	77			+1	-2
Maintenance/ Technical	7	7			-1	-1
<b>General Support</b>	<b>84</b>	<b>84</b>	<b>+0</b>	<b>+0.0%</b>	<b>+0</b>	<b>-3</b>
Health Care Assistants	368	365	-3	-0.9%	-2	-3
Care, other	30	30			-1	+0
<b>Patient &amp; Client Care</b>	<b>398</b>	<b>395</b>	<b>-3</b>	<b>-0.8%</b>	<b>-3</b>	<b>-3</b>



Mar 2021 (Dec 2020 figure: 549)	WTE Feb 2021	WTE Mar 2021	WTE change since Feb 21	% change since Feb 21	WTE change since Dec 20	WTE change since Mar 20
<b>Overall</b>	<b>550</b>	<b>553</b>	<b>+4</b>	<b>+0.7%</b>	<b>+4</b>	<b>+10</b>
Medical/ Dental, other	1	1				
<b>Medical &amp; Dental</b>	<b>1</b>	<b>1</b>				
Nurse/ Midwife Manager	33	35	+2	+6.0%	+3	
Nurse/ Midwife Specialist & AN/MP	5	5	+0	+0.2%	-1	-2
Staff Nurse/ Staff Midwife	153	151	-3	-1.7%	-2	+8
Pre-registration Nurse/ Midwife Intern	8	8			-4	-4
Pre-registration Nurse Intern (COVID-19)				-100.0%		
Nursing/ Midwifery Student	8	8			+8	-4
Nursing/ Midwifery other	3	3				
<b>Nursing &amp; Midwifery</b>	<b>203</b>	<b>202</b>	<b>-1</b>	<b>-0.3%</b>	<b>+8</b>	<b>+2</b>
Therapy Professions	15	15			-1	
Social Care	65	68	+3	+4.3%	+1	+12
Social Workers	5	5				-0
Psychologists	7	6	-1	-14.3%	-1	+1
H&SC, Other	6	6	+0	+6.5%	+0	+0
<b>Health &amp; Social Care Professionals</b>	<b>98</b>	<b>100</b>	<b>+2</b>	<b>+2.2%</b>	<b>-0</b>	<b>+13</b>
Management (VIII & above)	2	2				
Administrative/ Supervisory (V to VII)	11	11				
Clerical (III & IV)	13	14	+0	+2.0%	-0	-0
<b>Management &amp; Administrative</b>	<b>26</b>	<b>27</b>	<b>+0</b>	<b>+1.0%</b>	<b>-0</b>	<b>-0</b>
Support	42	42			-1	-2
Maintenance/ Technical	4	4				
<b>General Support</b>	<b>47</b>	<b>47</b>			<b>-1</b>	<b>-2</b>
Health Care Assistants	152	154	+2	+1.5%	-2	-4
Care, other	23	23	-1	-2.5%	-1	+0
<b>Patient &amp; Client Care</b>	<b>175</b>	<b>177</b>	<b>+2</b>	<b>+1.0%</b>	<b>-3</b>	<b>-3</b>

## Daughters of Charity, Roscrea

Mar 2021 (Dec 2020 figure: 289)	WTE Feb 2021	WTE Mar 2021	WTE change since Feb 21	% change since Feb 21	WTE change since Dec 20	WTE change since Mar 20
<b>Overall</b>	<b>290</b>	<b>291</b>	<b>+1</b>	<b>+0.4%</b>	<b>+2</b>	<b>+2</b>
Nurse/ Midwife Manager	14	14	-0	-0.0%	-1	-1
Staff Nurse/ Staff Midwife	18	19	+2	+8.5%	+1	+1
Nursing/ Midwifery other	1	1				
<b>Nursing &amp; Midwifery</b>	<b>32</b>	<b>34</b>	<b>+2</b>	<b>+4.7%</b>	<b>-1</b>	<b>-0</b>
Therapy Professions	2	2				
Social Care	26	25	-1	-3.8%	+0	+5
Social Workers	1	1				
Psychologists	1	1				
<b>Health &amp; Social Care Professionals</b>	<b>30</b>	<b>29</b>	<b>-1</b>	<b>-3.3%</b>	<b>+0</b>	<b>+5</b>
Management (VIII & above)	1	1				
Administrative/ Supervisory (V to VII)	7	7			-1	
Clerical (III & IV)	7	7			+1	+0
<b>Management &amp; Administrative</b>	<b>15</b>	<b>15</b>			<b>-0</b>	<b>+0</b>
Support	4	4				
Maintenance/ Technical	5	5				-1
<b>General Support</b>	<b>9</b>	<b>9</b>				<b>-1</b>
Health Care Assistants	202	203	+1	+0.3%	+3	+1
Care, other	2	2				-3
<b>Patient &amp; Client Care</b>	<b>204</b>	<b>204</b>	<b>+1</b>	<b>+0.3%</b>	<b>+3</b>	<b>-2</b>

## Kare, Newbridge, Co Kildare

Mar 2021 (Dec 2020 figure: 377)	WTE Feb 2021	WTE Mar 2021	WTE change since Feb 21	% change since Feb 21	WTE change since Dec 20	WTE change since Mar 20
<b>Overall</b>	<b>380</b>	<b>374</b>	<b>-5</b>	<b>-1.4%</b>	<b>-3</b>	<b>+15</b>
Nurse/ Midwife Manager	7	8	+1	+11.9%	+1	-2
Staff Nurse/ Staff Midwife	24	24	+0	+1.0%	-1	+1
<b>Nursing &amp; Midwifery</b>	<b>31</b>	<b>32</b>	<b>+1</b>	<b>+3.6%</b>	<b>-0</b>	<b>-1</b>
Therapy Professions	13	12	-0	-3.3%	-0	-1
Social Care	68	69	+0	+0.7%	+1	+7
Social Workers	4	4				-0
Psychologists	7	7	+0	+1.3%	-0	+1
<b>Health &amp; Social Care Professionals</b>	<b>91</b>	<b>92</b>	<b>+0</b>	<b>+0.2%</b>	<b>-0</b>	<b>+7</b>
Management (VIII & above)	6	6				
Administrative/ Supervisory (V to VII)	13	12	-1	-11.2%	-1	-1
Clerical (III & IV)	13	13			-1	+1
<b>Management &amp; Administrative</b>	<b>33</b>	<b>31</b>	<b>-1</b>	<b>-4.6%</b>	<b>-2</b>	<b>-0</b>
Support	1	1			-0	-0
<b>General Support</b>	<b>1</b>	<b>1</b>			<b>-0</b>	<b>-0</b>
Health Care Assistants	108	102	-6	-5.8%	-4	+3
Care, other	115	116	+1	+0.9%	+4	+7
<b>Patient &amp; Client Care</b>	<b>223</b>	<b>218</b>	<b>-5</b>	<b>-2.3%</b>	<b>+0</b>	<b>+10</b>

Mar 2021 (Dec 2020 figure: 320)	WTE Feb 2021	WTE Mar 2021	WTE change since Feb 21	% change since Feb 21	WTE change since Dec 20	WTE change since Mar 20
<b>Overall</b>	<b>335</b>	<b>335</b>	<b>-0</b>	<b>-0.1%</b>	<b>+14</b>	<b>+35</b>
Nurse/ Midwife Manager	18	18	-0	-2.5%	+1	+2
Staff Nurse/ Staff Midwife	32	29	-3	-9.2%	+1	+0
<b>Nursing &amp; Midwifery</b>	<b>50</b>	<b>47</b>	<b>-3</b>	<b>-6.8%</b>	<b>+1</b>	<b>+2</b>
Social Care	110	104	-6	-5.1%	-1	+9
Social Workers	3	3				-0
Psychologists	1	1				
H&SC, Other	1	1				
<b>Health &amp; Social Care Professionals</b>	<b>115</b>	<b>109</b>	<b>-6</b>	<b>-4.9%</b>	<b>-1</b>	<b>+8</b>
Management (VIII & above)	3	3				+2
Administrative/ Supervisory (V to VII)	5	5			+0	+0
Clerical (III & IV)	11	11	+0	+1.5%	-0	+1
<b>Management &amp; Administrative</b>	<b>19</b>	<b>19</b>	<b>+0</b>	<b>+0.9%</b>	<b>-0</b>	<b>+3</b>
Support	1	1	-0	-7.5%	-0	+0
Maintenance/ Technical	2	2				
<b>General Support</b>	<b>3</b>	<b>3</b>	<b>-0</b>	<b>-2.9%</b>	<b>-0</b>	<b>+0</b>
Health Care Assistants	120	128	+8	+6.3%	+14	+23
Care, other	27	28	+1	+3.7%	+0	-1
<b>Patient &amp; Client Care</b>	<b>147</b>	<b>156</b>	<b>+9</b>	<b>+5.8%</b>	<b>+14</b>	<b>+22</b>

Mar 2021 (Dec 2020 figure: 284)	WTE Feb 2021	WTE Mar 2021	WTE change since Feb 21	% change since Feb 21	WTE change since Dec 20	WTE change since Mar 20
<b>Overall</b>	<b>287</b>	<b>292</b>	<b>+5</b>	<b>+1.9%</b>	<b>+8</b>	<b>+23</b>
Nurse/ Midwife Manager	9	9	+0	+0.1%	-0	-0
Staff Nurse/ Staff Midwife	4	4	+0	+0.0%	-0	-0
<b>Nursing &amp; Midwifery</b>	<b>13</b>	<b>13</b>	<b>+0</b>	<b>+0.1%</b>	<b>-1</b>	<b>-1</b>
Therapy Professions	3	3				
Social Care	99	101	+1	+1.3%	+1	+4
Social Workers	4	4	-0	-1.6%	+0	+1
Psychologists	2	2	-0	-1.0%	+0	+0
H&SC, Other	2	3	+1	+22.0%	+1	+0
<b>Health &amp; Social Care Professionals</b>	<b>111</b>	<b>112</b>	<b>+2</b>	<b>+1.6%</b>	<b>+2</b>	<b>+5</b>
Senior Management (VIII & GM)	1	1			+1	+1
Management (VIII & above)	1	1			+1	+1
Administrative/ Supervisory (V to VII)	4	4	+1	+13.2%	+1	-1
Clerical (III & IV)	10	10	-0	-0.1%	+0	-0
<b>Management &amp; Administrative</b>	<b>15</b>	<b>16</b>	<b>+0</b>	<b>+3.2%</b>	<b>+1</b>	<b>+0</b>
Support	1	1				
Maintenance/ Technical	3	3				
<b>General Support</b>	<b>4</b>	<b>4</b>				
Health Care Assistants	128	132	+3	+2.6%	+6	+20
Care, other	15	15	-0	-0.5%	-0	-2
<b>Patient &amp; Client Care</b>	<b>144</b>	<b>147</b>	<b>+3</b>	<b>+2.2%</b>	<b>+5</b>	<b>+19</b>

Mar 2021 (Dec 2020 figure: 342)	WTE Feb 2021	WTE Mar 2021	WTE change since Feb 21	% change since Feb 21	WTE change since Dec 20	WTE change since Mar 20
<b>Overall</b>	<b>342</b>	<b>343</b>	<b>+1</b>	<b>+0.4%</b>	<b>+1</b>	<b>+13</b>
Nurse/ Midwife Manager	13	14	+1	+6.9%	+1	-2
Nurse/ Midwife Specialist & AN/MP	2	2	+0	+0.6%	+0	+0
Staff Nurse/ Staff Midwife	21	20	-1	-3.5%	-2	-3
<i>Pre-registration Nurse/ Midwife Intern</i>	6	6	-0	-2.9%	+6	+1
Nursing/ Midwifery Student	6	6	-0	-2.9%	+6	+1
Nursing/ Midwifery other	6	6	+0	+0.2%	-1	-1
<b>Nursing &amp; Midwifery</b>	<b>48</b>	<b>48</b>	<b>+0</b>	<b>+0.1%</b>	<b>+4</b>	<b>-5</b>
Therapy Professions	8	8	-1	-6.6%	-1	-1
Social Care	92	95	+2	+2.6%	+1	+6
Social Workers	3	3				+0
Psychologists	2	2				+0
H&SC, Other	3	3				
<b>Health &amp; Social Care Professionals</b>	<b>108</b>	<b>109</b>	<b>+2</b>	<b>+1.8%</b>	<b>-0</b>	<b>+5</b>
Management (VIII & above)	4	4				+1
Administrative/ Supervisory (V to VII)	12	12			-1	-2
Clerical (III & IV)	13	13			+0	-1
<b>Management &amp; Administrative</b>	<b>29</b>	<b>29</b>			<b>-0</b>	<b>-2</b>
Support	13	13	-0	-2.1%	-1	-1
Maintenance/ Technical	4	4				-1
<b>General Support</b>	<b>17</b>	<b>17</b>	<b>-0</b>	<b>-1.6%</b>	<b>-1</b>	<b>-2</b>
Health Care Assistants	131	130	-1	-0.5%	-2	+15
Care, other	9	9	+0	+2.8%	+0	+1
<b>Patient &amp; Client Care</b>	<b>140</b>	<b>140</b>	<b>-0</b>	<b>-0.2%</b>	<b>-2</b>	<b>+16</b>

# Peamount Hospital (Newcastle)

Mar 2021 (Dec 2020 figure: 483)	WTE Feb 2021	WTE Mar 2021	WTE change since Feb 21	% change since Feb 21	WTE change since Dec 20	WTE change since Mar 20
<b>Overall</b>	<b>475</b>	<b>475</b>	<b>+0</b>	<b>+0.0%</b>	<b>-7</b>	<b>-18</b>
Registrars	2	2	+0	+3.0%	+0	+0
SHO/ Interns	7	8	+1	+13.6%	+1	+1
<b>Medical &amp; Dental</b>	<b>9</b>	<b>10</b>	<b>+1</b>	<b>+11.2%</b>	<b>+1</b>	<b>+1</b>
Nurse/ Midwife Manager	31	33	+3	+8.1%	+5	+6
Nurse/ Midwife Specialist & AN/MP	2	2				+0
Staff Nurse/ Staff Midwife	73	73	+1	+0.8%	-2	-11
<i>Nursing Education/Clinical</i>	1	1			+1	+1
Nursing/ Midwifery other	1	1				+1
<b>Nursing &amp; Midwifery</b>	<b>106</b>	<b>109</b>	<b>+3</b>	<b>+2.9%</b>	<b>+3</b>	<b>-4</b>
Therapy Professions	29	29	-0	-1.5%	+0	-5
Health Science/ Diagnostics	3	4	+1	+20.0%	+1	+1
Social Care	3	3	-0	-6.0%	-1	-1
Social Workers	6	6	+0	+4.5%	+1	+1
Pharmacy	4	4	+0	+0.8%	+0	-0
<b>Health &amp; Social Care Professionals</b>	<b>45</b>	<b>46</b>	<b>+0</b>	<b>+0.6%</b>	<b>+1</b>	<b>-4</b>
Management (VIII & above)	4	4				
Administrative/ Supervisory (V to VII)	17	18	+1	+3.0%	+1	+3
Clerical (III & IV)	19	20	+1	+5.5%	+0	-1
<b>Management &amp; Administrative</b>	<b>40</b>	<b>42</b>	<b>+2</b>	<b>+3.9%</b>	<b>+1</b>	<b>+2</b>
Support	42	38	-4	-10.5%	-6	-9
Maintenance/ Technical	8	9	+1	+14.4%		+1
<b>General Support</b>	<b>50</b>	<b>47</b>	<b>-3</b>	<b>-6.6%</b>	<b>-6</b>	<b>-8</b>
Health Care Assistants	221	221	-0	-0.1%	-6	-3
Care, other	3	1	-2	-70.1%	-2	-2
<b>Patient &amp; Client Care</b>	<b>224</b>	<b>222</b>	<b>-3</b>	<b>-1.1%</b>	<b>-8</b>	<b>-5</b>

# Stewart's Hospital, (Palmerstown)

Mar 2021 (Dec 2020 figure: 914)	WTE Feb 2021	WTE Mar 2021	WTE change since Feb 21	% change since Feb 21	WTE change since Dec 20	WTE change since Mar 20
<b>Overall</b>	<b>915</b>	<b>921</b>	<b>+7</b>	<b>+0.7%</b>	<b>+8</b>	<b>+64</b>
Consultants	0	0				
<b>Medical &amp; Dental</b>	<b>0</b>	<b>0</b>				
Nurse/ Midwife Manager	34	33	-1	-2.9%	+2	+1
Staff Nurse/ Staff Midwife	84	82	-2	-2.4%	+1	+9
<i>Pre-registration Nurse/ Midwife Intern</i>	7	8	+1	+7.1%	+8	
Nursing/ Midwifery Student	7	8	+1	+7.1%	+8	
Nursing/ Midwifery other	1	2	+1	+200.0%	+1	+1
<b>Nursing &amp; Midwifery</b>	<b>125</b>	<b>124</b>	<b>-2</b>	<b>-1.2%</b>	<b>+11</b>	<b>+11</b>
Therapy Professions	18	19	+1	+5.7%	-1	+2
Social Care	13	12	-1	-7.7%	-1	
Social Workers	6	6				-1
Psychologists	4	4				-1
<b>Health &amp; Social Care Professionals</b>	<b>40</b>	<b>40</b>			<b>-2</b>	<b>+1</b>
Management (VIII & above)	17	18	+1	+7.0%	+2	+7
Administrative/ Supervisory (V to VII)	18	18	+0	+1.0%	+1	+2
Clerical (III & IV)	24	24				+2
<b>Management &amp; Administrative</b>	<b>59</b>	<b>60</b>	<b>+1</b>	<b>+2.3%</b>	<b>+3</b>	<b>+11</b>
Support	53	53	+0	+0.2%	-1	-2
Maintenance/ Technical	6	6				+1
<b>General Support</b>	<b>59</b>	<b>59</b>	<b>+0</b>	<b>+0.2%</b>	<b>-1</b>	<b>-1</b>
Health Care Assistants	509	515	+6	+1.1%	-5	+36
Care, other	122	123	+1	+0.7%	+1	+6
<b>Patient &amp; Client Care</b>	<b>631</b>	<b>638</b>	<b>+7</b>	<b>+1.0%</b>	<b>-4</b>	<b>+42</b>

Mar 2021 (Dec 2020 figure: 648)	WTE Feb 2021	WTE Mar 2021	WTE change since Feb 21	% change since Feb 21	WTE change since Dec 20	WTE change since Mar 20
<b>Overall</b>	<b>646</b>	<b>646</b>			<b>-2</b>	<b>+15</b>
Registrars	1	1				
<b>Medical &amp; Dental</b>	<b>1</b>	<b>1</b>				
Nurse/ Midwife Manager	45	45			-2	+1
Nurse/ Midwife Specialist & AN/MP	3	3			-0	-1
Staff Nurse/ Staff Midwife	166	166			+13	+19
<i>Pre-registration Nurse/ Midwife Intern</i>				-100.0%		-9
<i>Pre-registration Nurse Intern (COVID-19)</i>				-100.0%		
Nursing/ Midwifery Student				-100.0%	-4	-9
<i>Nursing Education/Clinical</i>	1	1			+1	+1
Nursing/ Midwifery other	1	1			+1	+1
<b>Nursing &amp; Midwifery</b>	<b>214</b>	<b>214</b>			<b>+8</b>	<b>+12</b>
Therapy Professions	3	3				+1
Social Care	71	71			-5	-4
Social Workers	2	2				
Psychologists	1	1				
<b>Health &amp; Social Care Professionals</b>	<b>77</b>	<b>77</b>			<b>-5</b>	<b>-4</b>
Management (VIII & above)	1	1			+0	+0
Administrative/ Supervisory (V to VII)	6	6			+0	+0
Clerical (III & IV)	12	12			+0	+0
<b>Management &amp; Administrative</b>	<b>18</b>	<b>18</b>			<b>+0</b>	<b>+0</b>
Support	20	20			+0	-1
Maintenance/ Technical	2	2			-1	-1
<b>General Support</b>	<b>22</b>	<b>22</b>			<b>-1</b>	<b>-2</b>
Health Care Assistants	282	282			-5	+11
Care, other	33	33			+0	-2
<b>Patient &amp; Client Care</b>	<b>315</b>	<b>315</b>			<b>-5</b>	<b>+9</b>



## St. John of God (IDS)

Mar 2021 (Dec 2020 figure: 468)	WTE Feb 2021	WTE Mar 2021	WTE change since Feb 21	% change since Feb 21	WTE change since Dec 20	WTE change since Mar 20
<b>Overall</b>	<b>459</b>	<b>458</b>	<b>-0</b>	<b>-0.1%</b>	<b>-9</b>	<b>+6</b>
<b>Medical &amp; Dental</b>	<b>1</b>	<b>1</b>				
Nurse/ Midwife Manager	9	9	-0	-1.5%	+1	+1
Staff Nurse/ Staff Midwife	50	51	+1	+2.6%	+2	+4
<b>Nursing &amp; Midwifery</b>	<b>58</b>	<b>60</b>	<b>+1</b>	<b>+2.0%</b>	<b>+3</b>	<b>+5</b>
Therapy Professions	13	13	-0	-0.2%	-0	+2
Social Care	156	154	-1	-0.9%	-5	+2
Social Workers	3	3				
Psychologists	7	7	+0	+0.1%	+1	+1
<b>Health &amp; Social Care Professionals</b>	<b>179</b>	<b>178</b>	<b>-1</b>	<b>-0.8%</b>	<b>-4</b>	<b>+5</b>
Management (VIII & above)	14	14	+0	+1.7%	-0	+0
Administrative/ Supervisory (V to VII)	27	27	+0	+1.2%	+0	-1
Clerical (III & IV)	18	18	-0	-0.2%	-0	-0
<b>Management &amp; Administrative</b>	<b>59</b>	<b>60</b>	<b>+1</b>	<b>+0.9%</b>	<b>-0</b>	<b>-2</b>
Support	12	12	-0	-2.3%	-1	-0
Maintenance/ Technical	5	5				
<b>General Support</b>	<b>17</b>	<b>17</b>	<b>-0</b>	<b>-1.6%</b>	<b>-1</b>	<b>-0</b>
Health Care Assistants	18	19	+0	+1.6%	+1	+2
Care, other	126	125	-1	-0.5%	-8	-5
<b>Patient &amp; Client Care</b>	<b>144</b>	<b>144</b>	<b>-0</b>	<b>-0.2%</b>	<b>-7</b>	<b>-2</b>

## St. John of God, Kerry

Mar 2021 (Dec 2020 figure: 320)	WTE Feb 2021	WTE Mar 2021	WTE change since Feb 21	% change since Feb 21	WTE change since Dec 20	WTE change since Mar 20
<b>Overall</b>	<b>321</b>	<b>326</b>	<b>+5</b>	<b>+1.6%</b>	<b>+6</b>	<b>+17</b>
Nurse/ Midwife Manager	15	15	+0	+3.3%	+0	+1
Staff Nurse/ Staff Midwife	47	48	+1	+3.0%	+1	+2
<b>Nursing &amp; Midwifery</b>	<b>62</b>	<b>64</b>	<b>+2</b>	<b>+3.0%</b>	<b>+2</b>	<b>+2</b>
Therapy Professions	4	4			+0	+1
Social Care	45	46	+1	+1.4%	-0	+0
Social Workers	1	1				
Psychologists	1	1	+0	+3.0%	+0	+0
<b>Health &amp; Social Care Professionals</b>	<b>51</b>	<b>52</b>	<b>+1</b>	<b>+1.3%</b>	<b>-0</b>	<b>+1</b>
Management (VIII & above)	1	1				
Administrative/ Supervisory (V to VII)	6	6	+0	+0.9%	-1	-1
Clerical (III & IV)	9	9	-0	-0.8%	+0	-1
<b>Management &amp; Administrative</b>	<b>17</b>	<b>17</b>	<b>-0</b>	<b>-0.1%</b>	<b>-1</b>	<b>-2</b>
<b>General Support</b>	<b>30</b>	<b>30</b>	<b>-0</b>	<b>-0.6%</b>	<b>+0</b>	<b>+0</b>
Health Care Assistants	117	117	-0	-0.0%	+3	+11
Care, other	45	48	+3	+5.9%	+2	+4
<b>Patient &amp; Client Care</b>	<b>162</b>	<b>165</b>	<b>+3</b>	<b>+1.6%</b>	<b>+5</b>	<b>+15</b>

# St. John of God Liffey Services

Mar 2021 (Dec 2020 figure: 801)	WTE Feb 2021	WTE Mar 2021	WTE change since Feb 21	% change since Feb 21	WTE change since Dec 20	WTE change since Mar 20
<b>Overall</b>	<b>782</b>	<b>778</b>	<b>-4</b>	<b>-0.5%</b>	<b>-22</b>	<b>+16</b>
Registrars	1	1				
<b>Medical &amp; Dental</b>	<b>1</b>	<b>1</b>				
Nurse/ Midwife Manager	20	20	-0	-0.3%	-2	-4
Nurse/ Midwife Specialist & AN/MP	1	1				
Staff Nurse/ Staff Midwife	90	92	+2	+1.8%	+1	+2
<b>Nursing &amp; Midwifery</b>	<b>111</b>	<b>113</b>	<b>+2</b>	<b>+1.4%</b>	<b>-1</b>	<b>-1</b>
Therapy Professions	10	11	+1	+6.0%	-2	-3
Social Care	264	264	+0	+0.1%	-5	+17
Social Workers	6	6	+0	+0.5%	-0	-1
Psychologists	7	6	-1	-11.3%	-0	+0
<b>Health &amp; Social Care Professionals</b>	<b>287</b>	<b>287</b>	<b>+0</b>	<b>+0.0%</b>	<b>-8</b>	<b>+12</b>
Management (VIII & above)	6	5	-1	-8.4%	+0	-1
Administrative/ Supervisory (V to VII)	10	10	-1	-7.7%	-2	-1
Clerical (III & IV)	20	19	-1	-4.1%	+1	+1
<b>Management &amp; Administrative</b>	<b>36</b>	<b>34</b>	<b>-2</b>	<b>-5.8%</b>	<b>-1</b>	<b>-1</b>
Support	26	29	+3	+10.7%	+1	-2
Maintenance/ Technical	14	14	-0	-0.7%	-0	-0
<b>General Support</b>	<b>41</b>	<b>43</b>	<b>+3</b>	<b>+6.7%</b>	<b>+1</b>	<b>-2</b>
Health Care Assistants	159	160	+1	+0.6%	-5	+4
Care, other	147	140	-7	-4.7%	-9	+4
<b>Patient &amp; Client Care</b>	<b>307</b>	<b>301</b>	<b>-6</b>	<b>-2.0%</b>	<b>-14</b>	<b>+8</b>

Mar 2021 (Dec 2020 figure: 1,453)	WTE Feb 2021	WTE Mar 2021	WTE change since Feb 21	% change since Feb 21	WTE change since Dec 20	WTE change since Mar 20
<b>Overall</b>	<b>1,428</b>	<b>1,426</b>	<b>-2</b>	<b>-0.2%</b>	<b>-27</b>	<b>+2</b>
Consultants	6	5	-1	-16.0%	-1	-1
Registrars	1	1				-2
Medical/ Dental, other	4	4				
<b>Medical &amp; Dental</b>	<b>11</b>	<b>10</b>	<b>-1</b>	<b>-9.1%</b>	<b>-1</b>	<b>-3</b>
Nurse/ Midwife Manager	87	86	-1	-1.3%	-2	-1
Staff Nurse/ Staff Midwife	168	166	-2	-1.3%	+1	+10
<b>Nursing &amp; Midwifery</b>	<b>255</b>	<b>251</b>	<b>-3</b>	<b>-1.3%</b>	<b>-1</b>	<b>+8</b>
Therapy Professions	51	50	-1	-1.1%	+4	-2
Social Care	572	574	+3	+0.4%	+9	+42
Social Workers	20	20	+0	+1.4%	-2	-1
Psychologists	22	22	-0	-2.0%	-1	+1
H&SC, Other	9	9	+1	+7.6%	+1	-1
<b>Health &amp; Social Care Professionals</b>	<b>673</b>	<b>676</b>	<b>+2</b>	<b>+0.4%</b>	<b>+11</b>	<b>+38</b>
Management (VIII & above)	21	21			+0	
Administrative/ Supervisory (V to VII)	50	50	+0	+0.1%	+4	+9
Clerical (III & IV)	45	47	+1	+3.0%	-7	-8
<b>Management &amp; Administrative</b>	<b>116</b>	<b>118</b>	<b>+1</b>	<b>+1.2%</b>	<b>-2</b>	<b>+1</b>
Support	46	46	+0	+0.4%	-2	-50
Maintenance/ Technical	12	12				
<b>General Support</b>	<b>58</b>	<b>58</b>	<b>+0</b>	<b>+0.3%</b>	<b>-2</b>	<b>-50</b>
Health Care Assistants	292	291	-2	-0.6%	-31	+10
Care, other	23	22	-0	-1.9%	-2	-3
<b>Patient &amp; Client Care</b>	<b>315</b>	<b>313</b>	<b>-2</b>	<b>-0.7%</b>	<b>-33</b>	<b>+8</b>

## St. Patrick's, Kilkenny

Mar 2021 (Dec 2020 figure: 287)	WTE Feb 2021	WTE Mar 2021	WTE change since Feb 21	% change since Feb 21	WTE change since Dec 20	WTE change since Mar 20
<b>Overall</b>	<b>284</b>	<b>284</b>	<b>-1</b>	<b>-0.3%</b>	<b>-3</b>	<b>+6</b>
Nurse/ Midwife Manager	12	12	-0	-0.5%	+0	-1
Staff Nurse/ Staff Midwife	26	25	-0	-0.5%	-1	-1
Pre-registration Nurse/ Midwife Intern	1	1			+1	+1
Nursing/ Midwifery Student	1	1			+1	+1
<b>Nursing &amp; Midwifery</b>	<b>39</b>	<b>38</b>	<b>-0</b>	<b>-0.5%</b>	<b>-0</b>	<b>-1</b>
Social Care	28	28	+0	+1.0%	-0	-0
Social Workers	1	1			-0	+0
H&SC, Other	2	2	+0	+0.6%	-0	-1
<b>Health &amp; Social Care Professionals</b>	<b>31</b>	<b>31</b>	<b>+0</b>	<b>+0.9%</b>	<b>-1</b>	<b>-1</b>
Executive Management	1	1			+1	
Management (VIII & above)	1	1				
Administrative/ Supervisory (V to VII)	6	6	+0	+0.5%	+0	+0
Clerical (III & IV)	12	12	+0	+3.7%	+0	-0
<b>Management &amp; Administrative</b>	<b>19</b>	<b>20</b>	<b>+0</b>	<b>+2.5%</b>	<b>+0</b>	<b>+0</b>
Support	1	1	-0	-11.1%	-1	-2
Maintenance/ Technical	2	2			-1	-1
<b>General Support</b>	<b>3</b>	<b>3</b>	<b>-0</b>	<b>-3.2%</b>	<b>-2</b>	<b>-3</b>
<b>Patient &amp; Client Care</b>	<b>193</b>	<b>192</b>	<b>-1</b>	<b>-0.6%</b>	<b>-1</b>	<b>+11</b>

## Sunbeam House Services

Mar 2021 (Dec 2020 figure: 450)	WTE Feb 2021	WTE Mar 2021	WTE change since Feb 21	% change since Feb 21	WTE change since Dec 20	WTE change since Mar 20
<b>Overall</b>	<b>468</b>	<b>451</b>	<b>-17</b>	<b>-3.7%</b>	<b>+1</b>	<b>+21</b>
Nurse/ Midwife Manager	4	4				+1
Staff Nurse/ Staff Midwife	33	32	-1	-4.1%	-0	-1
<b>Nursing &amp; Midwifery</b>	<b>37</b>	<b>36</b>	<b>-1</b>	<b>-3.6%</b>	<b>-0</b>	<b>+0</b>
Therapy Professions	4	4	+0	+12.7%	+2	+3
Social Care	202	197	-5	-2.5%	+3	+33
Social Workers	2	3	+1	+50.0%	+1	+2
Psychologists				-100.0%		-2
H&SC, Other				-100.0%		-1
<b>Health &amp; Social Care Professionals</b>	<b>208</b>	<b>204</b>	<b>-4</b>	<b>-1.8%</b>	<b>+5</b>	<b>+34</b>
Management (VIII & above)	9	9				
Administrative/ Supervisory (V to VII)	9	9	-0	-0.6%		-1
Clerical (III & IV)	28	28	-0	-0.8%	+3	+1
<b>Management &amp; Administrative</b>	<b>46</b>	<b>45</b>	<b>-0</b>	<b>-0.6%</b>	<b>+3</b>	<b>+0</b>
Support	4	4	+0	+2.1%	-3	-11
Maintenance/ Technical				-100.0%		-3
<b>General Support</b>	<b>4</b>	<b>4</b>	<b>+0</b>	<b>+2.1%</b>	<b>-3</b>	<b>-14</b>
Health Care Assistants	73	70	-4	-5.3%	+4	+9
Care, other	100	91	-8	-8.3%	-7	-8
<b>Patient &amp; Client Care</b>	<b>173</b>	<b>161</b>	<b>-12</b>	<b>-7.0%</b>	<b>-3</b>	<b>+1</b>

Bros. of Charity, West Region

Mar 2021 (Dec 2020 figure: 1,298)	WTE Feb 2021	WTE Mar 2021	WTE change since Feb 21	% change since Feb 21	WTE change since Dec 20	WTE change since Mar 20
<b>Overall</b>	<b>1,287</b>	<b>1,292</b>	<b>+4</b>	<b>+0.3%</b>	<b>-6</b>	<b>+17</b>
Consultants	2	2				
Registrars	2	2				-1
<b>Medical &amp; Dental</b>	<b>4</b>	<b>4</b>				<b>-1</b>
Nurse/ Midwife Manager	69	70	+1	+1.2%	+1	+0
Nurse/ Midwife Specialist & AN/MP	5	5	-0	-0.4%	+0	-0
Staff Nurse/ Staff Midwife	121	123	+2	+1.3%	-1	+2
<i>Pre-registration Nurse Intern (COVID-19)</i>				-100.0%		
Nursing/ Midwifery Student				-100.0%	-1	
<b>Nursing &amp; Midwifery</b>	<b>195</b>	<b>197</b>	<b>+2</b>	<b>+1.2%</b>	<b>-0</b>	<b>+2</b>
Therapy Professions	31	30	-1	-3.4%	+1	-5
Social Care	214	215	+1	+0.4%	+4	+20
Social Workers	27	27	+0	+0.2%	+1	+1
Psychologists	14	13	-0	-0.6%	+1	-1
H&SC, Other	11	10	-1	-7.7%	-1	-5
<b>Health &amp; Social Care Professionals</b>	<b>296</b>	<b>295</b>	<b>-1</b>	<b>-0.4%</b>	<b>+5</b>	<b>+10</b>
Management (VIII & above)	13	13			+0	+0
Administrative/ Supervisory (V to VII)	37	36	-1	-3.3%	-1	+1
Clerical (III & IV)	37	37	-0	-0.3%	-0	-1
<b>Management &amp; Administrative</b>	<b>87</b>	<b>86</b>	<b>-1</b>	<b>-1.5%</b>	<b>-1</b>	<b>+0</b>
Support	40	41	+1	+1.3%	-2	-7
Maintenance/ Technical	5	5				+0
<b>General Support</b>	<b>45</b>	<b>46</b>	<b>+1</b>	<b>+1.2%</b>	<b>-2</b>	<b>-7</b>
Health Care Assistants	539	543	+3	+0.6%	-5	+17
Care, other	120	120	+0	+0.3%	-2	-5
<b>Patient &amp; Client Care</b>	<b>659</b>	<b>663</b>	<b>+4</b>	<b>+0.6%</b>	<b>-8</b>	<b>+12</b>

## Social Care Disability Services Employment by Grade Group: Mar 2021

Mar 2021 (Dec 2020 figure: 18,944)	WTE Feb 2021	WTE Mar 2021	WTE change since Feb 21	% change since Feb 21	WTE change since Dec 20	WTE change since Mar 20
<b>Overall</b>	<b>18,983</b>	<b>19,039</b>	<b>+56</b>	<b>+0.3%</b>	<b>+95</b>	<b>+770</b>
Consultant Paediatrics	3	3				
Consultant Psychiatry	20	19	-1	-4.6%	-3	-2
<b>Consultants</b>	<b>23</b>	<b>22</b>	<b>-1</b>	<b>-3.9%</b>	<b>-3</b>	<b>-2</b>
Registrar	6	6			+3	+0
Senior Registrar	2	2			-1	
Specialist Registrar	2	2	+0	+3.0%	+0	-1
<b>Registrars</b>	<b>10</b>	<b>10</b>	<b>+0</b>	<b>+0.6%</b>	<b>+2</b>	<b>-1</b>
<b>SHO/ Interns</b>	<b>7</b>	<b>8</b>	<b>+1</b>	<b>+13.6%</b>	<b>-1</b>	<b>-0</b>
<b>Medical/ Dental, other</b>	<b>14</b>	<b>14</b>	<b>+0</b>	<b>+0.1%</b>		<b>-0</b>
<b>Medical &amp; Dental</b>	<b>54</b>	<b>54</b>	<b>+0</b>	<b>+0.2%</b>	<b>-2</b>	<b>-2</b>
Clinical Nurse/ Midwife Manager	819	827	+8	+1.0%	+12	+13
Director Nursing/Midwifery, Assistant	45	45	-0	-0.7%	-1	+6
Director of Nursing/Midwifery	37	36	-1	-3.8%	-1	-1
<b>Nurse/ Midwife Manager</b>	<b>901</b>	<b>907</b>	<b>+6</b>	<b>+0.7%</b>	<b>+10</b>	<b>+18</b>
Advanced Nurse/ Midwife Practitioner	8	8				+6
Clinical Nurse/ Midwife Specialist	59	57	-2	-3.1%	+1	-3
<b>Nurse/ Midwife Specialist &amp; AN/MP</b>	<b>67</b>	<b>65</b>	<b>-2</b>	<b>-2.8%</b>	<b>+1</b>	<b>+3</b>
Staff Nurse [Intellectual Disability]	1,664	1,666	+2	+0.1%	-123	+86
Staff Nurse [Psychiatric]	198	203	+4	+2.3%	+150	+129
Staff Nurses [General/ Children's]	742	737	-4	-0.6%	-15	-167
<b>Staff Nurse/ Staff Midwife</b>	<b>2,604</b>	<b>2,606</b>	<b>+2</b>	<b>+0.1%</b>	<b>+13</b>	<b>+47</b>
<b>Public Health Nurse</b>	<b>7</b>	<b>10</b>	<b>+3</b>	<b>+44.9%</b>	<b>+3</b>	<b>+4</b>
Pre-registration Nurse/ Midwife Intern	75	81	+5	+7.1%	+78	+2
Pre-registration Nurse Intern (COVID-19)	10		-10	-100.0%	-32	
Nursing/ Midwifery awaiting registration	13	13				-2
<b>Nursing/ Midwifery Student</b>	<b>98</b>	<b>94</b>	<b>-4</b>	<b>-4.3%</b>	<b>+46</b>	<b>-0</b>
Nursing Education/Clinical	24	24	+0	+0.1%	+1	+1
Other Nursing/ Midwifery	1	2	+1	+100.0%	+1	+1
<b>Nursing/ Midwifery other</b>	<b>25</b>	<b>26</b>	<b>+1</b>	<b>+4.1%</b>	<b>+2</b>	<b>+2</b>
<b>Nursing &amp; Midwifery</b>	<b>3,701</b>	<b>3,708</b>	<b>+6</b>	<b>+0.2%</b>	<b>+76</b>	<b>+74</b>
Dietitians	15	18	+3	+17.0%	+1	-1
Occupational Therapists	293	291	-2	-0.6%	+13	+25
Physiotherapists	193	192	-1	-0.5%	-1	-3
Speech & Language Therapists	299	302	+3	+1.0%	-6	+10
<b>Therapy Professions</b>	<b>800</b>	<b>802</b>	<b>+3</b>	<b>+0.4%</b>	<b>+7</b>	<b>+31</b>
Clinical Engineering	14	14			+1	+3
Clinical Measurement	2	3	+1	+30.0%	+1	+2
Medical Science	4	4				
Phlebotomists				-100.0%		-1
Radiographers	1	1				
<b>Health Science/ Diagnostics</b>	<b>21</b>	<b>22</b>	<b>+1</b>	<b>+2.9%</b>	<b>+2</b>	<b>+4</b>
<b>Social Care</b>	<b>2,797</b>	<b>2,802</b>	<b>+6</b>	<b>+0.2%</b>	<b>+13</b>	<b>+205</b>
<b>Social Workers</b>	<b>229</b>	<b>232</b>	<b>+3</b>	<b>+1.3%</b>	<b>+4</b>	<b>+8</b>
<b>Psychologists</b>	<b>232</b>	<b>232</b>	<b>+1</b>	<b>+0.3%</b>	<b>+3</b>	<b>+18</b>
<b>Pharmacy</b>	<b>6</b>	<b>6</b>	<b>+0</b>	<b>+0.5%</b>	<b>+0</b>	<b>-0</b>
Counsellor Therapists	21	21	+0	+1.6%	+1	+2
Other Health & Social Care	44	43	-1	-2.4%	-2	-8
Play Therapists/ Specialists	11	11	-0	-3.0%	+0	-4

Mar 2021 (Dec 2020 figure: 18,944)	WTE Feb 2021	WTE Mar 2021	WTE change since Feb 21	% change since Feb 21	WTE change since Dec 20	WTE change since Mar 20
<b>Overall</b>	<b>18,983</b>	<b>19,039</b>	<b>+56</b>	<b>+0.3%</b>	<b>+95</b>	<b>+770</b>
<b>H&amp;SC, Other</b>	<b>76</b>	<b>75</b>	<b>-1</b>	<b>-1.4%</b>	<b>-1</b>	<b>-10</b>
<b>Health &amp; Social Care Professionals</b>	<b>4,161</b>	<b>4,172</b>	<b>+12</b>	<b>+0.3%</b>	<b>+29</b>	<b>+256</b>
Executive Management	37	39	+2	+5.3%	+3	+8
Senior Management (VIII & GM)	174	176	+2	+1.0%	+8	+25
<b>Management (VIII &amp; above)</b>	<b>211</b>	<b>215</b>	<b>+4</b>	<b>+1.7%</b>	<b>+11</b>	<b>+32</b>
Middle Management (V-VII)	523	534	+12	+2.2%	+23	+56
Other Administrative	15	14	-1	-5.5%	-2	-1
<b>Administrative/ Supervisory (V to VII)</b>	<b>537</b>	<b>548</b>	<b>+11</b>	<b>+2.0%</b>	<b>+21</b>	<b>+55</b>
<b>Clerical (III &amp; IV)</b>	<b>683</b>	<b>695</b>	<b>+12</b>	<b>+1.8%</b>	<b>+10</b>	<b>+22</b>
<b>Management &amp; Administrative</b>	<b>1,431</b>	<b>1,458</b>	<b>+27</b>	<b>+1.9%</b>	<b>+42</b>	<b>+109</b>
Catering	93	92	-1	-0.6%	-4	-8
Household Services	396	401	+4	+1.1%	-5	-15
Other Labs & Associated	1	1	+0	+4.0%	+0	+0
Other Support	137	136	-1	-0.7%	+0	-56
Portering	21	18	-3	-14.0%	-6	-10
<b>Support</b>	<b>648</b>	<b>648</b>	<b>-0</b>	<b>-0.0%</b>	<b>-15</b>	<b>-88</b>
Maintenance	118	119	+1	+0.5%	-3	-0
Technical Services	11	11				+3
<b>Maintenance/ Technical</b>	<b>129</b>	<b>130</b>	<b>+1</b>	<b>+0.4%</b>	<b>-3</b>	<b>+3</b>
<b>General Support</b>	<b>778</b>	<b>778</b>	<b>+0</b>	<b>+0.0%</b>	<b>-17</b>	<b>-85</b>
HCA, Nurse's Aide, etc.	7,053	7,067	+15	+0.2%	-24	+352
HCA (Student Nurse/Midwife COVID-19)	1	1	-1	-56.6%	+1	+1
Health & Social Care Assistants	13	13	+0	+1.9%	+2	+2
<b>Health Care Assistants</b>	<b>7,067</b>	<b>7,081</b>	<b>+14</b>	<b>+0.2%</b>	<b>-21</b>	<b>+355</b>
<b>Home Help</b>	<b>92</b>	<b>90</b>	<b>-1</b>	<b>-1.5%</b>	<b>-3</b>	<b>-16</b>
<b>Care, other</b>	<b>1,701</b>	<b>1,698</b>	<b>-3</b>	<b>-0.1%</b>	<b>-8</b>	<b>+79</b>
<b>Patient &amp; Client Care</b>	<b>8,859</b>	<b>8,869</b>	<b>+10</b>	<b>+0.1%</b>	<b>-32</b>	<b>+418</b>

## Employment by WTE, Headcount, Gender, Full-Time /Part-Time etc.: Mar 2021

Social Care Disability Services Staff Group	WTE	Headcount	WTE: no.	% Male	% female	Male WTE: no.	Female WTE: no.	% Total Perm	% Male Perm	% Female Perm	% Total Full Time	% Total Part Time	% Male FT	% Female FT
<b>Overall</b>	<b>19,039</b>	<b>22,680</b>	<b>1.19</b>	<b>19.6%</b>	<b>80.4%</b>	<b>1.15</b>	<b>1.20</b>	<b>87.7%</b>	<b>87.0%</b>	<b>87.9%</b>	<b>58.3%</b>	<b>41.7%</b>	<b>70.0%</b>	<b>55.4%</b>
Consultant Paediatrics	3	6	1.97	16.7%	83.3%	1.82	2.00	66.7%	66.7%	80.0%	33.3%	66.7%	100.0%	20.0%
Consultant Psychiatry	19	25	1.34	28.0%	72.0%	1.33	1.35	84.0%	84.0%	83.3%	56.0%	44.0%	71.4%	50.0%
<b>Consultants</b>	<b>22</b>	<b>31</b>	<b>1.43</b>	<b>25.8%</b>	<b>74.2%</b>	<b>1.37</b>	<b>1.45</b>	<b>80.6%</b>	<b>75.0%</b>	<b>82.6%</b>	<b>51.6%</b>	<b>48.4%</b>	<b>75.0%</b>	<b>43.5%</b>
Registrar	6	6	1.03	16.7%	83.3%	1.00	1.04	0.0%	0.0%	0.0%	83.3%	16.7%	100.0%	80.0%
Senior Registrar	2	2	1.00		100.0%		1.00	0.0%	0.0%	0.0%	100.0%	0.0%		100.0%
Specialist Registrar	2	3	1.46	33.3%	66.7%	1.00	1.89	0.0%	0.0%	0.0%	100.0%	0.0%	100.0%	100.0%
<b>Registrars</b>	<b>10</b>	<b>11</b>	<b>1.12</b>	<b>18.2%</b>	<b>81.8%</b>	<b>1.00</b>	<b>1.15</b>	<b>0.0%</b>	<b>0.0%</b>	<b>0.0%</b>	<b>90.9%</b>	<b>9.1%</b>	<b>100.0%</b>	<b>88.9%</b>
<b>SHO/ Interns</b>	<b>8</b>	<b>10</b>	<b>1.26</b>	<b>40.0%</b>	<b>60.0%</b>	<b>1.31</b>	<b>1.23</b>	<b>0.0%</b>	<b>0.0%</b>	<b>0.0%</b>	<b>100.0%</b>	<b>0.0%</b>	<b>100.0%</b>	<b>100.0%</b>
<b>Medical/ Dental, other</b>	<b>14</b>	<b>22</b>	<b>1.54</b>	<b>45.5%</b>	<b>54.5%</b>	<b>1.28</b>	<b>1.84</b>	<b>90.9%</b>	<b>80.0%</b>	<b>100.0%</b>	<b>40.9%</b>	<b>59.1%</b>	<b>50.0%</b>	<b>33.3%</b>
<b>Medical &amp; Dental</b>	<b>54</b>	<b>74</b>	<b>1.38</b>	<b>32.4%</b>	<b>67.6%</b>	<b>1.29</b>	<b>1.42</b>	<b>60.8%</b>	<b>58.3%</b>	<b>62.0%</b>	<b>60.8%</b>	<b>39.2%</b>	<b>70.8%</b>	<b>56.0%</b>
Clinical Nurse/ Midwife Manager	827	886	1.07	12.8%	87.2%	1.01	1.08	92.6%	92.6%	93.1%	82.2%	17.8%	98.2%	79.8%
Director Nursing/Midwifery, Assistant	45	46	1.03	15.2%	84.8%	1.00	1.04	97.8%	97.8%	97.4%	93.5%	6.5%	100.0%	92.3%
Director of Nursing/Midwifery	36	37	1.03	8.1%	91.9%	1.02	1.03	97.3%	97.3%	97.1%	97.3%	2.7%	100.0%	97.1%
<b>Nurse/ Midwife Manager</b>	<b>907</b>	<b>969</b>	<b>1.07</b>	<b>12.7%</b>	<b>87.3%</b>	<b>1.01</b>	<b>1.08</b>	<b>93.0%</b>	<b>89.4%</b>	<b>93.5%</b>	<b>83.3%</b>	<b>16.7%</b>	<b>98.4%</b>	<b>81.1%</b>
Advanced Nurse/ Midwife Practitioner	8	8	1.00	37.5%	62.5%	1.00	1.00	100.0%	100.0%	100.0%	100.0%	0.0%	100.0%	100.0%
Clinical Nurse/ Midwife Specialist	57	66	1.15	6.1%	93.9%	1.01	1.16	97.0%	97.0%	96.8%	56.1%	43.9%	100.0%	53.2%
<b>Nurse/ Midwife Specialist &amp; AN/MP</b>	<b>65</b>	<b>74</b>	<b>1.13</b>	<b>9.5%</b>	<b>90.5%</b>	<b>1.01</b>	<b>1.15</b>	<b>97.3%</b>	<b>100.0%</b>	<b>97.0%</b>	<b>60.8%</b>	<b>39.2%</b>	<b>100.0%</b>	<b>56.7%</b>
Staff Nurse [Intellectual Disability]	1,666	1,931	1.16	8.2%	91.8%	1.09	1.17	94.9%	94.9%	94.9%	63.6%	36.4%	83.6%	61.8%
Staff Nurse [Psychiatric]	203	235	1.16	10.2%	89.8%	1.07	1.17	92.8%	92.8%	92.9%	67.7%	32.3%	83.3%	65.9%
Staff Nurses [General/ Children's]	737	858	1.16	13.5%	86.5%	1.08	1.18	91.3%	91.3%	91.1%	67.6%	32.4%	85.3%	64.8%
<b>Staff Nurse/ Staff Midwife</b>	<b>2,606</b>	<b>3,024</b>	<b>1.16</b>	<b>9.9%</b>	<b>90.1%</b>	<b>1.08</b>	<b>1.17</b>	<b>93.7%</b>	<b>93.6%</b>	<b>93.7%</b>	<b>65.0%</b>	<b>35.0%</b>	<b>84.3%</b>	<b>62.9%</b>
<b>Public Health Nurse</b>	<b>10</b>	<b>11</b>	<b>1.11</b>		<b>100.0%</b>	<b>#DIV/0</b>	<b>1.11</b>	<b>100.0%</b>		<b>100.0%</b>	<b>72.7%</b>	<b>27.3%</b>	<b>#DIV/0</b>	<b>72.7%</b>
<b>Nursing/ Midwifery Student</b>	<b>94</b>	<b>177</b>	<b>1.89</b>	<b>4.5%</b>	<b>95.5%</b>	<b>2.03</b>	<b>1.88</b>	<b>20.9%</b>	<b>0.0%</b>	<b>21.9%</b>	<b>70.6%</b>	<b>29.4%</b>	<b>87.5%</b>	<b>69.8%</b>
Nursing Education/Clinical	24	27	1.12		100.0%		1.12	96.3%	96.3%	96.3%	74.1%	25.9%		74.1%
Other Nursing/ Midwifery	2	2	1.00	50.0%	50.0%	1.00	1.00	100.0%	100.0%	100.0%	100.0%	0.0%	100.0%	100.0%
<b>Nursing/ Midwifery other</b>	<b>26</b>	<b>29</b>	<b>1.11</b>	<b>3.4%</b>	<b>96.6%</b>	<b>1.00</b>	<b>1.12</b>	<b>96.6%</b>	<b>100.0%</b>	<b>96.4%</b>	<b>75.9%</b>	<b>24.1%</b>	<b>100.0%</b>	<b>75.0%</b>
<b>Nursing &amp; Midwifery</b>	<b>3,708</b>	<b>4,284</b>	<b>1.16</b>	<b>10.2%</b>	<b>89.8%</b>	<b>1.07</b>	<b>1.17</b>	<b>90.6%</b>	<b>90.9%</b>	<b>90.6%</b>	<b>69.4%</b>	<b>30.6%</b>	<b>88.6%</b>	<b>67.2%</b>



Dietitians	18	22	1.24		100.0%		1.24	<b>90.9%</b>	90.9%	90.9%	<b>59.1%</b>	40.9%		59.1%
Occupational Therapists	291	330	1.13	7.0%	93.0%	1.09	1.14	<b>91.8%</b>	91.8%	91.5%	<b>77.3%</b>	22.7%	82.6%	76.9%
Physiotherapists	192	224	1.17	15.6%	84.4%	1.02	1.20	<b>91.1%</b>	91.1%	90.5%	<b>66.5%</b>	33.5%	94.3%	61.4%
Speech & Language Therapists	302	350	1.16	1.4%	98.6%	1.00	1.16	<b>92.6%</b>	92.6%	92.5%	<b>74.3%</b>	25.7%	100.0%	73.9%
<b>Therapy Professions</b>	<b>802</b>	<b>926</b>	<b>1.15</b>	<b>6.8%</b>	<b>93.2%</b>	<b>1.05</b>	<b>1.16</b>	<b>91.9%</b>	<b>95.2%</b>	<b>91.7%</b>	<b>73.1%</b>	<b>26.9%</b>	<b>90.5%</b>	<b>71.8%</b>
Clinical Engineering	14	14	1.00	92.9%	7.1%	1.00	1.00	<b>92.9%</b>	92.9%	100.0%	<b>92.9%</b>	7.1%	92.3%	100.0%
Clinical Measurement	3	3	1.15	66.7%	33.3%	1.00	1.67	<b>100.0%</b>	100.0%	100.0%	<b>100.0%</b>	0.0%	100.0%	100.0%
Medical Science	4	4	1.00	75.0%	25.0%	1.00	1.00	<b>75.0%</b>	75.0%	100.0%	<b>100.0%</b>	0.0%	100.0%	100.0%
Radiographers	1	1	1.00		100.0%		1.00	<b>100.0%</b>	100.0%	100.0%	<b>100.0%</b>	0.0%		100.0%
<b>Health Science/ Diagnostics</b>	<b>22</b>	<b>22</b>	<b>1.02</b>	<b>81.8%</b>	<b>18.2%</b>	<b>1.00</b>	<b>1.11</b>	<b>90.9%</b>	<b>88.9%</b>	<b>100.0%</b>	<b>95.5%</b>	<b>4.5%</b>	<b>94.4%</b>	<b>100.0%</b>
<b>Social Care</b>	<b>2,802</b>	<b>3,309</b>	<b>1.18</b>	<b>16.1%</b>	<b>83.9%</b>	<b>1.11</b>	<b>1.20</b>	<b>90.1%</b>	<b>92.1%</b>	<b>89.7%</b>	<b>49.0%</b>	<b>51.0%</b>	<b>63.7%</b>	<b>46.2%</b>
<b>Social Workers</b>	<b>232</b>	<b>274</b>	<b>1.18</b>	<b>17.5%</b>	<b>82.5%</b>	<b>1.07</b>	<b>1.21</b>	<b>92.0%</b>	<b>87.5%</b>	<b>92.9%</b>	<b>68.6%</b>	<b>31.4%</b>	<b>83.3%</b>	<b>65.5%</b>
<b>Psychologists</b>	<b>232</b>	<b>266</b>	<b>1.14</b>	<b>21.8%</b>	<b>78.2%</b>	<b>1.09</b>	<b>1.16</b>	<b>94.0%</b>	<b>93.1%</b>	<b>94.2%</b>	<b>73.7%</b>	<b>26.3%</b>	<b>82.8%</b>	<b>71.2%</b>
<b>Pharmacy</b>	<b>6</b>	<b>8</b>	<b>1.25</b>	<b>12.5%</b>	<b>87.5%</b>	<b>2.63</b>	<b>1.17</b>	<b>87.5%</b>	<b>100.0%</b>	<b>85.7%</b>	<b>62.5%</b>	<b>37.5%</b>	<b>0.0%</b>	<b>71.4%</b>
Counsellor Therapists	21	25	1.19	8.0%	92.0%	1.00	1.21	<b>96.0%</b>	96.0%	95.7%	<b>56.0%</b>	44.0%	100.0%	52.2%
Other Health & Social Care	43	59	1.37	16.9%	83.1%	1.10	1.44	<b>88.1%</b>	88.1%	87.8%	<b>45.8%</b>	54.2%	80.0%	38.8%
Play Therapists/ Specialists	11	15	1.37	20.0%	80.0%	1.00	1.52	<b>100.0%</b>	100.0%	100.0%	<b>46.7%</b>	53.3%	100.0%	33.3%
<b>H&amp;SC, Other</b>	<b>75</b>	<b>99</b>	<b>1.32</b>	<b>15.2%</b>	<b>84.8%</b>	<b>1.06</b>	<b>1.38</b>	<b>91.9%</b>	<b>93.3%</b>	<b>91.7%</b>	<b>48.5%</b>	<b>51.5%</b>	<b>86.7%</b>	<b>41.7%</b>
<b>Health &amp; Social Care</b>	<b>4,172</b>	<b>4,904</b>	<b>1.18</b>	<b>15.0%</b>	<b>85.0%</b>	<b>1.10</b>	<b>1.19</b>	<b>90.8%</b>	<b>92.1%</b>	<b>90.5%</b>	<b>56.2%</b>	<b>43.8%</b>	<b>69.9%</b>	<b>53.8%</b>
Executive Management	39	39	1.00	38.5%	61.5%	1.00	1.00	<b>92.3%</b>	92.3%	95.8%	<b>97.4%</b>	2.6%	100.0%	95.8%
Senior Management (VIII & GM)	176	180	1.03	31.1%	68.9%	1.00	1.04	<b>95.0%</b>	95.0%	96.0%	<b>96.1%</b>	3.9%	100.0%	94.4%
<b>Management (VIII &amp; above)</b>	<b>215</b>	<b>219</b>	<b>1.02</b>	<b>32.4%</b>	<b>67.6%</b>	<b>1.00</b>	<b>1.03</b>	<b>94.5%</b>	<b>91.5%</b>	<b>95.9%</b>	<b>96.3%</b>	<b>3.7%</b>	<b>100.0%</b>	<b>94.6%</b>
Middle Management (V-VII)	534	573	1.07	22.2%	77.8%	1.04	1.08	<b>93.2%</b>	93.2%	93.5%	<b>78.4%</b>	21.6%	85.0%	76.5%
Other Administrative	14	14	1.00	21.4%	78.6%	1.00	1.00	<b>100.0%</b>	100.0%	100.0%	<b>100.0%</b>	0.0%	100.0%	100.0%
<b>Administrative/ Supervisory (V to VII)</b>	<b>548</b>	<b>587</b>	<b>1.07</b>	<b>22.1%</b>	<b>77.9%</b>	<b>1.04</b>	<b>1.08</b>	<b>93.4%</b>	<b>92.3%</b>	<b>93.7%</b>	<b>78.9%</b>	<b>21.1%</b>	<b>85.4%</b>	<b>77.0%</b>
<b>Clerical (III &amp; IV)</b>	<b>695</b>	<b>838</b>	<b>1.21</b>	<b>9.8%</b>	<b>90.2%</b>	<b>1.11</b>	<b>1.22</b>	<b>88.8%</b>	<b>81.7%</b>	<b>89.6%</b>	<b>58.6%</b>	<b>41.4%</b>	<b>74.4%</b>	<b>56.9%</b>
<b>Management &amp; Administrative</b>	<b>1,458</b>	<b>1,644</b>	<b>1.13</b>	<b>17.2%</b>	<b>82.8%</b>	<b>1.05</b>	<b>1.15</b>	<b>91.2%</b>	<b>89.0%</b>	<b>91.6%</b>	<b>70.9%</b>	<b>29.1%</b>	<b>85.9%</b>	<b>67.7%</b>
Catering	92	111	1.21	29.7%	70.3%	1.10	1.26	<b>99.1%</b>	99.1%	100.0%	<b>61.3%</b>	38.7%	84.8%	51.3%
Household Services	401	572	1.43	16.6%	83.4%	1.46	1.42	<b>88.8%</b>	88.8%	91.6%	<b>37.6%</b>	62.4%	57.9%	33.5%
Other Labs & Associated	1	2	1.92	50.0%	50.0%	25.00	1.00	<b>50.0%</b>	50.0%	100.0%	<b>100.0%</b>	0.0%	100.0%	100.0%
Other Support	136	223	1.64	51.6%	48.4%	1.31	2.25	<b>93.3%</b>	93.3%	100.0%	<b>27.4%</b>	72.6%	45.2%	8.3%
Portering	18	25	1.36	96.0%	4.0%	1.37	1.25	<b>88.0%</b>	88.0%	100.0%	<b>44.0%</b>	56.0%	45.8%	0.0%
<b>Support</b>	<b>648</b>	<b>933</b>	<b>1.44</b>	<b>28.7%</b>	<b>71.3%</b>	<b>1.34</b>	<b>1.49</b>	<b>91.0%</b>	<b>83.6%</b>	<b>94.0%</b>	<b>38.3%</b>	<b>61.7%</b>	<b>54.9%</b>	<b>31.6%</b>
Maintenance	119	131	1.10	93.1%	6.9%	1.09	1.34	<b>93.9%</b>	93.9%	100.0%	<b>76.3%</b>	23.7%	80.3%	22.2%
Technical Services	11	11	0.99	72.7%	27.3%	0.99	1.00	<b>90.9%</b>	90.9%	100.0%	<b>100.0%</b>	0.0%	100.0%	100.0%

<b>Maintenance/ Technical</b>	<b>130</b>	<b>142</b>	<b>1.09</b>	<b>91.5%</b>	<b>8.5%</b>	<b>1.08</b>	<b>1.23</b>	<b>93.7%</b>	<b>93.1%</b>	<b>100.0%</b>	<b>78.2%</b>	<b>21.8%</b>	<b>81.5%</b>	<b>41.7%</b>
<b>General Support</b>	<b>778</b>	<b>1,075</b>	<b>1.38</b>	<b>37.0%</b>	<b>63.0%</b>	<b>1.24</b>	<b>1.48</b>	<b>91.3%</b>	<b>86.7%</b>	<b>94.1%</b>	<b>43.5%</b>	<b>56.5%</b>	<b>63.6%</b>	<b>31.8%</b>
HCA, Nurse's Aide, etc.	7,067	8,327	1.18	23.2%	76.8%	1.12	1.20	84.1%	84.1%	84.3%	53.5%	46.5%	63.5%	50.4%
HCA (Student Nurse/Midwife COVID-19)	1	1	1.79		100.0%		1.79	0.0%	0.0%	0.0%	0.0%	100.0%		0.0%
Health & Social Care Assistants	13	16	1.24		100.0%		1.24	75.0%	75.0%	75.0%	56.3%	43.8%		56.3%
<b>Health Care Assistants</b>	<b>7,081</b>	<b>8,344</b>	<b>1.18</b>	<b>23.2%</b>	<b>76.8%</b>	<b>1.12</b>	<b>1.20</b>	<b>84.1%</b>	<b>83.5%</b>	<b>84.3%</b>	<b>53.5%</b>	<b>46.5%</b>	<b>63.5%</b>	<b>50.4%</b>
<b>Home Help</b>	<b>90</b>	<b>248</b>	<b>2.74</b>	<b>8.1%</b>	<b>91.9%</b>	<b>3.89</b>	<b>2.67</b>	<b>53.6%</b>	<b>55.0%</b>	<b>53.5%</b>	<b>3.6%</b>	<b>96.4%</b>	<b>0.0%</b>	<b>3.9%</b>
<b>Care, other</b>	<b>1,698</b>	<b>2,107</b>	<b>1.24</b>	<b>28.4%</b>	<b>71.6%</b>	<b>1.38</b>	<b>1.19</b>	<b>89.5%</b>	<b>91.0%</b>	<b>88.9%</b>	<b>63.6%</b>	<b>36.4%</b>	<b>76.5%</b>	<b>58.4%</b>
<b>Patient &amp; Client Care</b>	<b>8,869</b>	<b>10,699</b>	<b>1.21</b>	<b>23.9%</b>	<b>76.1%</b>	<b>1.17</b>	<b>1.22</b>	<b>84.4%</b>	<b>85.0%</b>	<b>84.3%</b>	<b>54.3%</b>	<b>45.7%</b>	<b>66.1%</b>	<b>50.6%</b>

## Employment by WTE, Headcount, Gender, Full-Time /Part-Time etc.: Mar 2021

Social Care Disability Services CHO	WTE	Headcount	WTE: no.	% Male	% female	Male WTE: no.	Female WTE: no.	% Total Perm	% Male Perm	% Female Perm	% Total Full Time	% Total Part Time	% Male FT	% Female FT
<b>Overall</b>	<b>19,039</b>	<b>22,680</b>	<b>1.19</b>	<b>19.6%</b>	<b>80.4%</b>	<b>1.15</b>	<b>1.20</b>	<b>87.7%</b>	<b>87.0%</b>	<b>87.9%</b>	<b>58.3%</b>	<b>41.7%</b>	<b>70.0%</b>	<b>55.4%</b>
<b>CHO 1</b>	<b>1,575</b>	<b>1,770</b>	<b>1.12</b>	<b>21.0%</b>	<b>79.0%</b>	<b>1.06</b>	<b>1.14</b>	<b>88.1%</b>	<b>88.1%</b>	<b>88.2%</b>	<b>77.4%</b>	<b>22.6%</b>	<b>88.9%</b>	<b>74.3%</b>
HSE	218	239	1.10	24.3%	75.7%	1.03	1.12	85.4%	85.4%	86.2%	74.1%	25.9%	91.4%	91.4%
Section 38	1,292	1,633	1.26	23.5%	76.5%	1.26	1.27	81.4%	81.4%	81.3%	39.4%	60.6%	42.7%	42.7%
<b>CHO 2</b>	<b>1,510</b>	<b>1,872</b>	<b>1.24</b>	<b>23.6%</b>	<b>76.4%</b>	<b>1.22</b>	<b>1.25</b>	<b>81.9%</b>	<b>81.9%</b>	<b>81.9%</b>	<b>43.9%</b>	<b>56.1%</b>	<b>49.1%</b>	<b>42.2%</b>
HSE	144	159	1.10	20.1%	79.9%	1.02	1.13	85.5%	85.5%	89.8%	74.2%	25.8%	93.8%	93.8%
Section 38	1,806	2,153	1.19	12.0%	88.0%	1.17	1.20	84.3%	84.3%	84.7%	37.9%	62.1%	38.8%	38.8%
<b>CHO 3</b>	<b>1,951</b>	<b>2,312</b>	<b>1.19</b>	<b>12.5%</b>	<b>87.5%</b>	<b>1.15</b>	<b>1.19</b>	<b>84.4%</b>	<b>84.4%</b>	<b>85.0%</b>	<b>40.4%</b>	<b>59.6%</b>	<b>44.8%</b>	<b>39.8%</b>
HSE	324	349	1.08	30.1%	69.9%	1.02	1.11	79.1%	79.1%	77.5%	87.7%	12.3%	98.1%	98.1%
Section 38	2,264	2,751	1.21	19.3%	80.7%	1.15	1.23	85.5%	85.5%	87.0%	63.4%	36.6%	68.0%	68.0%
<b>CHO 4</b>	<b>2,588</b>	<b>3,100</b>	<b>1.20</b>	<b>20.5%</b>	<b>79.5%</b>	<b>1.13</b>	<b>1.22</b>	<b>84.8%</b>	<b>84.8%</b>	<b>86.0%</b>	<b>66.1%</b>	<b>33.9%</b>	<b>73.0%</b>	<b>64.4%</b>
HSE	436	532	1.22	12.0%	88.0%	1.06	1.24	91.5%	91.5%	92.1%	68.6%	31.4%	89.1%	89.1%
Section 38	1,172	1,370	1.17	20.8%	79.2%	1.11	1.18	82.5%	82.5%	81.8%	47.6%	52.4%	59.6%	59.6%
<b>CHO 5</b>	<b>1,609</b>	<b>1,902</b>	<b>1.18</b>	<b>18.3%</b>	<b>81.7%</b>	<b>1.10</b>	<b>1.20</b>	<b>85.0%</b>	<b>85.0%</b>	<b>84.9%</b>	<b>53.5%</b>	<b>46.5%</b>	<b>65.0%</b>	<b>50.9%</b>
HSE	243	267	1.10	18.7%	81.3%	1.01	1.12	92.5%	92.5%	94.9%	80.1%	19.9%	98.0%	98.0%
Section 38	965	1,241	1.29	28.6%	71.4%	1.61	1.19	93.6%	93.6%	93.1%	66.2%	33.8%	81.7%	81.7%
<b>CHO 6</b>	<b>1,209</b>	<b>1,508</b>	<b>1.25</b>	<b>26.9%</b>	<b>73.1%</b>	<b>1.50</b>	<b>1.18</b>	<b>93.4%</b>	<b>93.4%</b>	<b>93.5%</b>	<b>68.7%</b>	<b>31.3%</b>	<b>83.7%</b>	<b>63.2%</b>
HSE	131	207	1.59	13.5%	86.5%	1.85	1.55	77.8%	77.8%	78.8%	51.2%	48.8%	42.9%	42.9%
Section 38	2,943	3,457	1.17	23.2%	76.8%	1.10	1.20	88.9%	88.9%	89.0%	69.5%	30.5%	82.5%	82.5%
<b>CHO 7</b>	<b>3,074</b>	<b>3,664</b>	<b>1.19</b>	<b>22.7%</b>	<b>77.3%</b>	<b>1.11</b>	<b>1.22</b>	<b>88.3%</b>	<b>88.3%</b>	<b>88.4%</b>	<b>68.5%</b>	<b>31.5%</b>	<b>81.2%</b>	<b>64.7%</b>
HSE	604	708	1.17	15.7%	84.3%	1.07	1.19	87.7%	87.7%	87.4%	67.5%	32.5%	84.7%	84.7%
Section 38	1,616	1,958	1.21	21.7%	78.3%	1.14	1.23	94.3%	94.3%	94.1%	41.7%	58.3%	48.5%	48.5%
<b>CHO 8</b>	<b>2,221</b>	<b>2,666</b>	<b>1.20</b>	<b>20.1%</b>	<b>79.9%</b>	<b>1.12</b>	<b>1.22</b>	<b>92.5%</b>	<b>92.5%</b>	<b>92.3%</b>	<b>48.6%</b>	<b>51.4%</b>	<b>56.0%</b>	<b>46.7%</b>
HSE	500	552	1.10	29.7%	70.3%	1.04	1.14	91.1%	91.1%	89.9%	87.5%	12.5%	95.1%	95.1%
Section 38	2,799	3,328	1.19	12.3%	87.7%	1.10	1.20	89.7%	89.7%	89.8%	51.0%	49.0%	64.5%	64.5%
<b>CHO 9</b>	<b>3,298</b>	<b>3,880</b>	<b>1.18</b>	<b>14.8%</b>	<b>85.2%</b>	<b>1.08</b>	<b>1.19</b>	<b>89.9%</b>	<b>89.9%</b>	<b>89.8%</b>	<b>56.2%</b>	<b>43.8%</b>	<b>73.3%</b>	<b>53.3%</b>
<b>other Community Services</b>	<b>6</b>	<b>6</b>	<b>1.01</b>	<b>16.7%</b>	<b>83.3%</b>	<b>1.00</b>	<b>1.01</b>	<b>83.3%</b>	<b>83.3%</b>	<b>80.0%</b>	<b>83.3%</b>	<b>16.7%</b>	<b>100.0%</b>	<b>80.0%</b>

Summary Staff Movement: March 2021

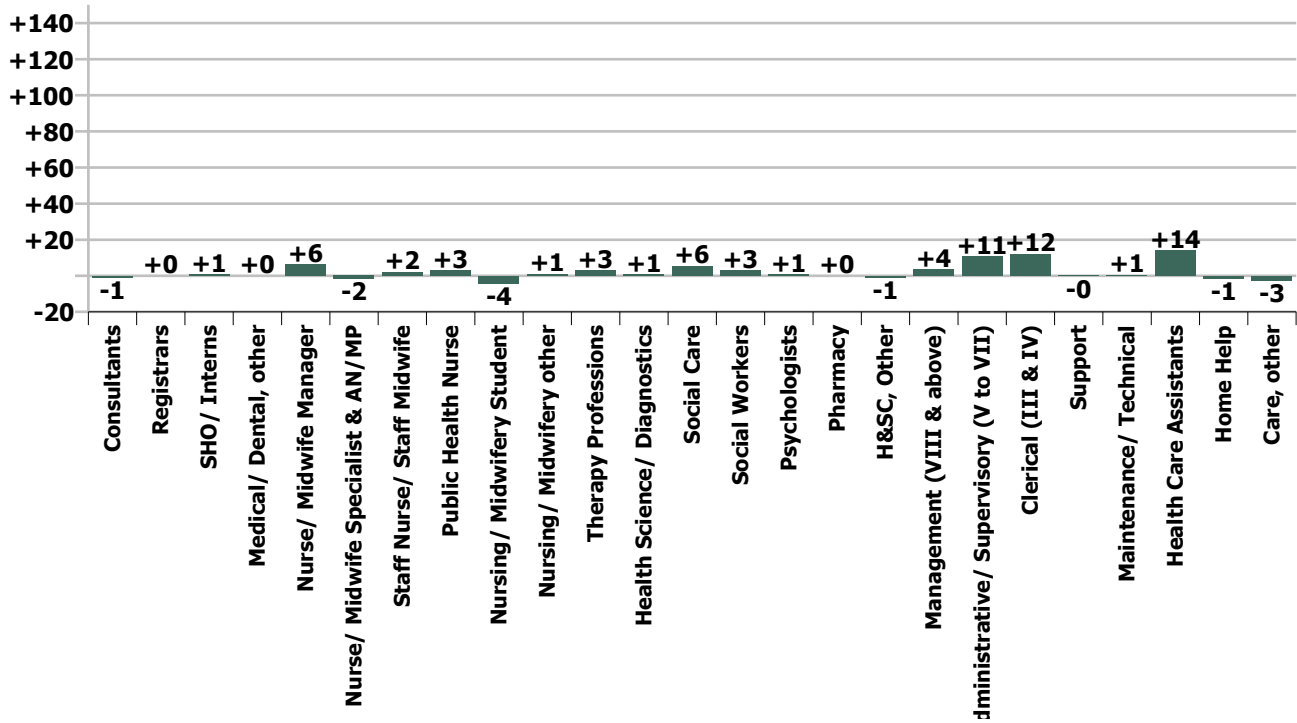
Month-on-month  
Summary

WTE change since Feb 21	% change since Feb 21	overall	Consultants	Registrars	SHO/ Interns	Medical/ Dental, other	Medical & Dental	Nurse/ Midwife Manager	Nurse/ Midwife Specialist & AN/MP	Staff Nurse/ Staff Midwife	Public Health Nurse	Nursing/ Midwifery Student	Nursing/ Midwifery other	Nursing & Midwifery	Therapy Professions	Health Science/ Diagnostics	Social Care	Social Workers	Psychologists	Pharmacy	H&SC, Other	Health & Social Care Professionals	Management (VIII & above)	Administrative Supervisory (V to VII)	Clerical (III & IV)	Management & Administrative	Support	Maintenance/ Technical	General Support	Health Care Assistants	Home Help	Care, other	Patient & Client Care	
Overall	+0.3%	+56	-0.9	+0.1	+1.0	+0.0	+0.1	+6.1	-1.9	+2.1	+3.1	-4.2	+1.0	+6.4	+2.9	+0.6	+5.5	+3.0	+0.8	+0.0	-1.0	+11.8	+3.6	+10.9	+12.2	+26.7	-0.3	+0.6	+0.3	+14.2	-1.4	-2.5	+10.2	
CHO 1	-0.0%	-0					0.0	-0.2	+0.0	+2.2		-0.5		+1.6	-2.9		-0.6	-0.7	-0.1		-0.2	-4.4		+0.0	-0.0	+0.0	-0.2	-0.5		-0.7	+1.8	-0.1	+1.5	+3.1
CHO 2	+0.1%	+1				+0.0	+0.0	-0.6	+1.0	+1.9				+2.4	-0.9		-0.7	+0.1	-0.1		-0.9	-2.5	-1.0	-2.2	+0.9	-2.3	+0.5		+0.5	+3.0		+0.3	+3.3	
CHO 3	+0.7%	+13					+0.0	+1.9	+0.0	-0.6				+1.3	+1.9		+4.6	+0.7	-1.6		+0.1	+5.7		-0.3	-0.9	-1.1	+1.4		+1.4	+3.3		+2.4	+5.6	
CHO 4	+0.7%	+19					0.0	+1.1	-1.0	+1.7				+1.8	-0.4		-0.6	+0.6	+0.2			-0.3	+0.0	+2.8	+0.7	+3.5	+0.0		+0.0	+5.9		+8.0	+13.8	
CHO 5	+1.5%	+24	+0.1				+0.1	+1.9	-1.0	+1.4	+3.1	-1.0		+4.4	+6.6		+2.4	+0.7	+1.9		-0.1	+11.5	+0.1	+0.8	+5.3	+6.2	-0.9		-0.9	+4.7	+0.5	-2.4	+2.8	
CHO 6	-1.5%	-18					0.0	-1.7		+0.2				-1.5	-0.5		-6.4	+1.0	+0.1		-0.1	-5.9	+0.2	+2.4	-0.2	+2.3	-0.2		-0.2	-4.2		-8.9	-13.1	
CHO 7	-0.1%	-2		+0.1	+1.0		+1.0	+5.3		-2.6		+0.5	+1.0	+4.2	+3.0	+0.6	+0.5	+0.1	+0.0		+0.0		+4.2	+0.6	-0.7	-2.2	-2.2	-1.6	+1.0	-0.6	-1.5	-0.5	-6.5	-8.5
CHO 8	+0.1%	+3					0.0	+0.3	+0.0	-3.7		-0.2	+0.0	-3.6	-2.5		-1.9	+0.3	+0.4		+0.4	-3.4	+0.0	+0.7	-0.3	+0.4	-0.4		-0.4	+8.0	-1.3	+2.9	+9.6	
CHO 9	+0.5%	+16	-1.0				-1.0	-1.9	-0.9	+1.5		-3.0	+0.0	-4.3	-1.4		+8.3	+0.3	-0.0		-0.4	+6.8	+3.7	+7.3	+8.9	+19.9	+1.1		+1.1	-6.7		+0.2	-6.4	
other Community Services	+0.5%	+0																							+0.0	+0.0								
		+0.3%	-3.9%	+0.6%	+13.6%	+0.1%	+0.2%	+0.7%	-2.8%	+0.1%	+44.9%	-4.3%	+4.1%	+0.2%	+0.4%	+2.9%	+0.2%	+1.3%	+0.3%	+0.5%	-1.4%	+0.3%	+1.7%	+2.0%	+1.8%	+1.9%	-0.0%	+0.4%	+0.0%	+0.2%	-1.5%	-0.1%	+0.1%	

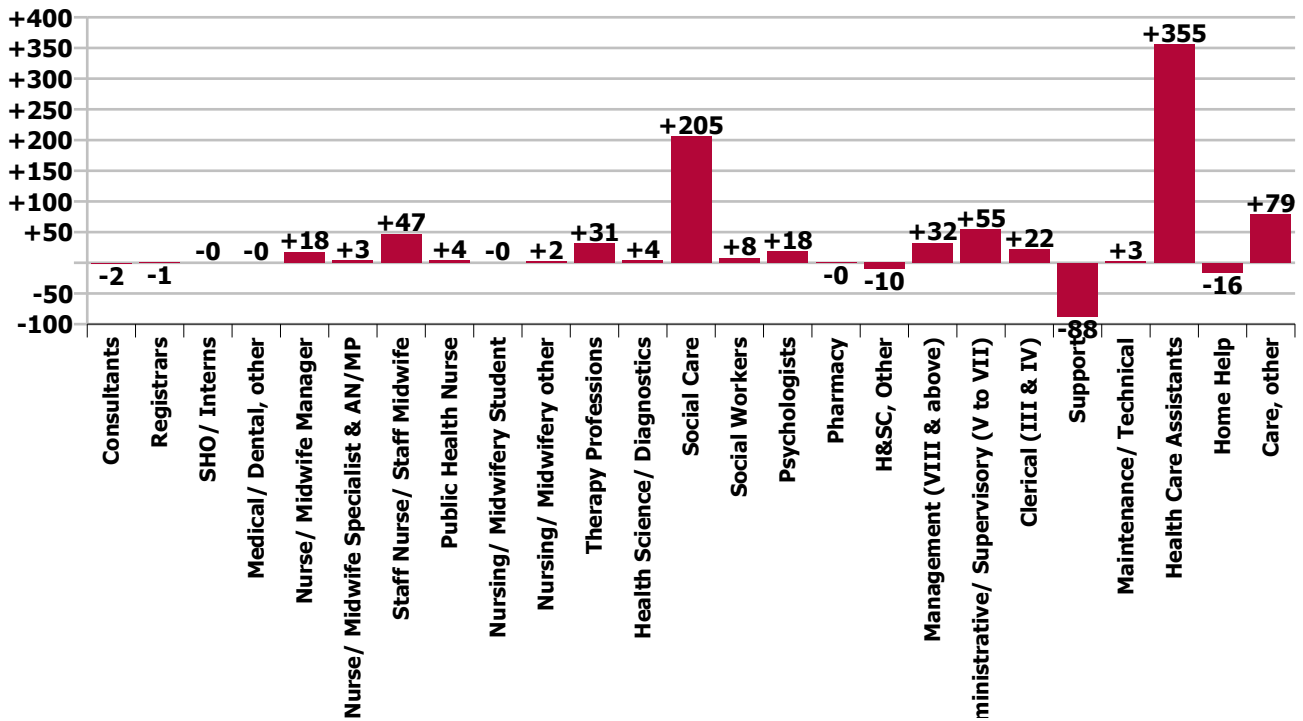
Year-on-year Summary

WTE change since Mar 20	% change since Mar 20	overall	Consultants	Registrars	SHO/ Interns	Medical/ Dental, other	Medical & Dental	Nurse/ Midwife Manager	Nurse/ Midwife Specialist & AN/MP	Staff Nurse/ Staff Midwife	Public Health Nurse	Nursing/ Midwifery Student	Nursing/ Midwifery other	Nursing & Midwifery	Therapy Professions	Health Science/ Diagnostics	Social Care	Social Workers	Psychologists	Pharmacy	H&SC, Other	Health & Social Care Professionals	Management (VIII & above)	Administrativ e/ Supervisory (V to VII)	Clerical (III & IV)	Management & Administrativ e	Support	Maintenance/ Technical	General Support	Health Care Assistants	Home Help	Care, other	Patient & Client Care
Overall	+4.2%	+770	-2	-1	-0	-0	-2	+18	+3	+47	+4	-0	+2	+74	+31	+4	+205	+8	+18	-0	-10	+256	+32	+55	+22	+109	-88	+3	-85	+355	-16	+79	+418
CHO 1	+3.4%	+51				-0	-0	+1	+2	+10		+5	-1	+17	-6		+2	-0	+6		-3	-0	+3	+7	+3	+13	+1		+1	+16	+1	+4	+21
CHO 2	+1.9%	+29		-1			-1	+2	+1	+0				+3	-8		+26	+1	-1		-5	+13	+1	+2	+0	+3	-7	-0	-7	+17		+0	+17
CHO 3	+7.6%	+137	-0				-0	+1	-2	+14		-4		+9	+7	+2	+35	+1	+1		-0	+45	+1	+6	-1	+5	-2	+6	+4	+66		+8	+73
CHO 4	+5.8%	+141						-1		+8		+4	-1	+10	+0		+14	+1	+3		+2	+20	+2	+2	+6	+9	-2	+2	-1	+65		+38	+103
CHO 5	+7.5%	+113	-0				-0	+7	+1	-2	+4	-0	+1	+10	+15		-3	+4	+7		-3	+20	+4	+9	+8	+22	-1	-1	-2	+68	-13	+8	+63
CHO 6	+3.2%	+38		+1			+1	-1		+3				+2	+4		+35	+1	-2		-1	+38	+1	+0	+3	+4	-11	-3	-14	+15		-7	+7
CHO 7	+3.1%	+92		+0	+1		+1	+3	-1	+2			+2	+6	+7	+1	+25	-2	-0	-0		+29	+9	+9	-1	+17	-14	+2	-12	+32	-2	+20	+50
CHO 8	+3.8%	+82	-1				-1	+7	-2	+3		-7	-0	+1	+2		+14	+1	+2		+0	+20	+4	-4	+2	+1	-3	-3	-5	+64	-1	+3	+67
CHO 9	+2.7%	+88	-0	-1	-1		-2	-1	+4	+9		+3	+1	+16	+10	+1	+58	+1	+2		-0	+72	+9	+24	+1	+34	-49	+0	-49	+12		+4	+17
other Community Services	+20.2%	+1																						+1		+1							
		+4.2%	-7.0%	-6.2%	-0.5%	-0.7%	-4.3%	+2.0%	+5.5%	+1.8%	+72.0%	-0.0%	+7.8%	+2.0%	+4.0%	+19.7%	+7.9%	+3.6%	+8.6%	-5.6%	-11.7%	+6.5%	+17.9%	+11.1%	+3.2%	+8.1%	-11.9%	+2.2%	-9.9%	+5.3%	-14.8%	+4.9%	+4.9%

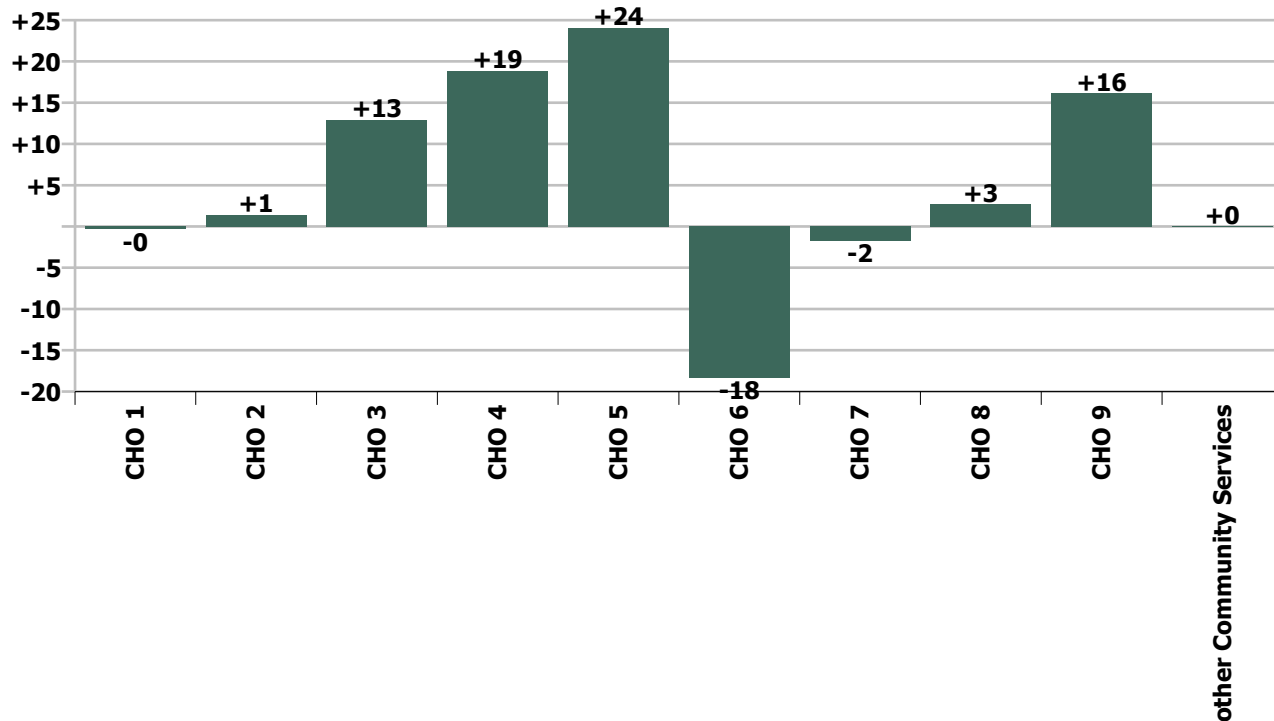
Staff Group change since: Feb 2021



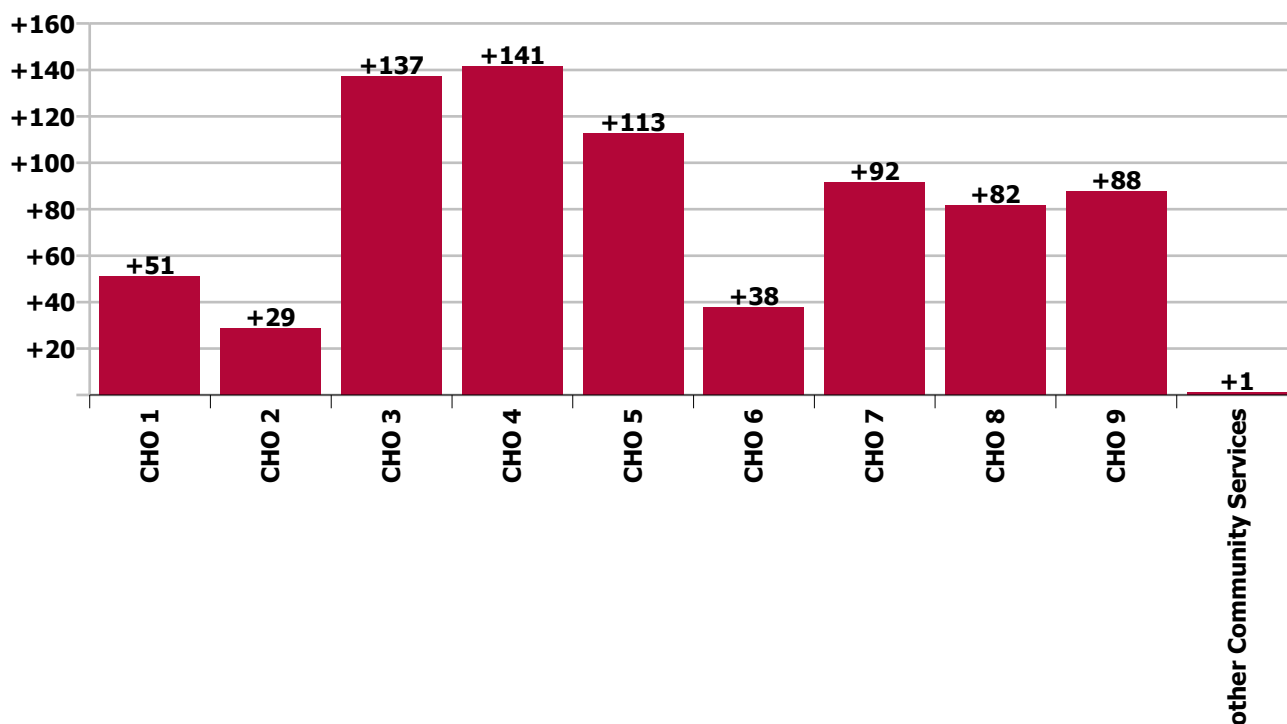
Staff Group change since: Mar 2020



CHO change since: Feb 2021



CHO change since: Mar 2020



## Longitudinal Employment Levels by Grade Group - Dec 2015 to Mar 2021

Mar 2021 (Dec 2015 figure: 15,715)	WTE Mar 2021	WTE change since Dec 15	WTE change since Dec 16	WTE change since Dec 17	WTE change since Dec 18	WTE change since Dec 19	WTE change since Dec 20	% change since Dec 15	% change since Dec 16	% change since Dec 17	% change since Dec 18	% change since Dec 19	% change since Dec 20
<b>Overall</b>	<b>19,039</b>	<b>+3,324</b>	<b>+2,285</b>	<b>+1,642</b>	<b>+1,220</b>	<b>+736</b>	<b>+95</b>	<b>+21.2%</b>	<b>+13.6%</b>	<b>+9.4%</b>	<b>+6.8%</b>	<b>+4.0%</b>	<b>+0.5%</b>
Consultant Medicine		-2	-2					-100.0%	-100.0%	-100.0%	-100.0%	-100.0%	-100.0%
Consultant Paediatrics	3	-0	-0	-0				-3.5%	-5.0%	-2.9%			
Consultant Psychiatry	19	-2	-3	-4	+1	-2	-3	-10.9%	-11.8%	-18.5%	+4.0%	-10.6%	-12.7%
Consultant Surgery		-0	-0					-100.0%	-100.0%	-100.0%	-100.0%	-100.0%	-100.0%
<b>Consultants</b>	<b>22</b>	<b>-4</b>	<b>-4</b>	<b>-4</b>	<b>+1</b>	<b>-2</b>	<b>-3</b>	<b>-15.9%</b>	<b>-16.7%</b>	<b>-16.6%</b>	<b>+3.4%</b>	<b>-9.3%</b>	<b>-11.1%</b>
Registrar	6	-0	-0	-0	+0	-1	+3	-3.3%	-3.3%	-3.3%	+9.0%	-17.1%	+93.3%
Senior Registrar	2	-1		-1			-1	-33.3%		-33.3%			-33.3%
Specialist Registrar	2	+0	+0	-2	+1	-2	+0	+3.0%	+3.0%	-48.5%	+106.0%	-48.5%	+3.0%
<b>Registrars</b>	<b>10</b>	<b>-1</b>	<b>-0</b>	<b>-3</b>	<b>+2</b>	<b>-3</b>	<b>+2</b>	<b>-10.4%</b>	<b>-1.4%</b>	<b>-24.2%</b>	<b>+18.5%</b>	<b>-24.2%</b>	<b>+23.3%</b>
<b>SHO/ Interns</b>	<b>8</b>	<b>+3</b>	<b>+2</b>	<b>+1</b>	<b>+1</b>	<b>+1</b>	<b>-1</b>	<b>+59.0%</b>	<b>+32.5%</b>	<b>+13.6%</b>	<b>+14.4%</b>	<b>+14.2%</b>	<b>-11.7%</b>
Dentists		-1						-100.0%	-100.0%	-100.0%	-100.0%	-100.0%	-100.0%
Other Medical	14	-1	-1	+0	+0	-0		-6.8%	-3.8%	+0.2%	+1.1%	-0.6%	
<b>Medical/ Dental, other</b>	<b>14</b>	<b>-2</b>	<b>-1</b>	<b>+0</b>	<b>+0</b>	<b>-0</b>		<b>-9.9%</b>	<b>-3.8%</b>	<b>+0.2%</b>	<b>+1.1%</b>	<b>-0.6%</b>	
<b>Medical &amp; Dental</b>	<b>54</b>	<b>-4</b>	<b>-3</b>	<b>-6</b>	<b>+3</b>	<b>-4</b>	<b>-2</b>	<b>-6.7%</b>	<b>-5.5%</b>	<b>-10.7%</b>	<b>+6.8%</b>	<b>-7.6%</b>	<b>-3.4%</b>
Clinical Nurse/ Midwife Manager	827	+28	+15	+18	+18	+16	+12	+3.5%	+1.9%	+2.2%	+2.2%	+1.9%	+1.5%
Director Nursing/Midwifery, Assistant	45	+8	+2	+7	+7	+4	-1	+21.5%	+5.3%	+20.1%	+17.2%	+9.2%	-2.5%
Director of Nursing/Midwifery	36	-11	-8	-10	-2	-6	-1	-23.6%	-17.8%	-21.1%	-5.4%	-14.9%	-2.7%
<b>Nurse/ Midwife Manager</b>	<b>907</b>	<b>+25</b>	<b>+10</b>	<b>+16</b>	<b>+23</b>	<b>+13</b>	<b>+10</b>	<b>+2.8%</b>	<b>+1.1%</b>	<b>+1.8%</b>	<b>+2.6%</b>	<b>+1.5%</b>	<b>+1.1%</b>
Advanced Nurse/ Midwife Practitioner	8	+7	+7	+6	+6	+6		+700.0%	+700.0%	+300.0%	+300.0%	+300.0%	
Clinical Nurse/ Midwife Specialist	57	-16	-14	-11	-9	-3	+1	-21.9%	-19.1%	-15.6%	-13.4%	-4.3%	+2.4%
<b>Nurse/ Midwife Specialist &amp; AN/MP</b>	<b>65</b>	<b>-9</b>	<b>-7</b>	<b>-5</b>	<b>-3</b>	<b>+3</b>	<b>+1</b>	<b>-12.2%</b>	<b>-9.1%</b>	<b>-6.5%</b>	<b>-4.3%</b>	<b>+5.6%</b>	<b>+2.1%</b>
Graduate Nursing/ Midwifery		-11						-100.0%	-100.0%	-100.0%	-100.0%	-100.0%	-100.0%
Staff Nurse [Intellectual Disability]	1,666	-114	-59	-37	-19	+68	-123	-6.4%	-3.4%	-2.2%	-1.1%	+4.3%	-6.9%
Staff Nurse [Psychiatric]	203	+97	+118	+132	+132	+119	+150	+92.0%	+139.0%	+187.7%	+185.9%	+142.7%	+285.0%
Staff Nurses [General/ Children's]	737	-159	-196	-187	-131	-154	-15	-17.7%	-21.0%	-20.2%	-15.1%	-17.3%	-2.0%
<b>Staff Nurse/ Staff Midwife</b>	<b>2,606</b>	<b>-187</b>	<b>-137</b>	<b>-92</b>	<b>-18</b>	<b>+33</b>	<b>+13</b>	<b>-6.7%</b>	<b>-5.0%</b>	<b>-3.4%</b>	<b>-0.7%</b>	<b>+1.3%</b>	<b>+0.5%</b>
<b>Public Health Nurse</b>	<b>10</b>	<b>+3</b>	<b>+3</b>	<b>+4</b>	<b>+3</b>	<b>+4</b>	<b>+3</b>	<b>+36.9%</b>	<b>+52.7%</b>	<b>+62.7%</b>	<b>+48.1%</b>	<b>+58.3%</b>	<b>+44.3%</b>
Pre-registration Nurse/ Midwife Intern	81	+66	+69	+69	+46	+52	+78	+464.7%	+572.0%	+584.0%	+131.6%	+185.5%	+3125.6%
Pre-registration Nurse Intern (COVID-19)							-32	-100.0%	-100.0%	-100.0%	-100.0%	-100.0%	-100.0%
Nursing/ Midwifery awaiting registration	13	+13	+13	+13	+13	-1		-100.0%	-100.0%	-100.0%	-100.0%	-6.1%	
<b>Nursing/ Midwifery Student</b>	<b>94</b>	<b>+79</b>	<b>+82</b>	<b>+82</b>	<b>+59</b>	<b>+52</b>	<b>+46</b>	<b>+555.7%</b>	<b>+680.3%</b>	<b>+694.2%</b>	<b>+168.9%</b>	<b>+122.5%</b>	<b>+98.0%</b>
Nursing Education/Clinical	24	+4	+3	+3	+3	+3	+1	+17.5%	+12.9%	+13.7%	+13.4%	+13.3%	+5.2%
Other Nursing/ Midwifery	2	-4	-3	-3	+1	+1	+1	-69.0%	-60.0%	-60.0%	+100.0%	+100.0%	+100.0%
<b>Nursing/ Midwifery other</b>	<b>26</b>	<b>-1</b>	<b>-0</b>	<b>-0</b>	<b>+4</b>	<b>+4</b>	<b>+2</b>	<b>-3.3%</b>	<b>-1.0%</b>	<b>-0.4%</b>	<b>+17.3%</b>	<b>+17.2%</b>	<b>+9.2%</b>
<b>Nursing &amp; Midwifery</b>	<b>3,708</b>	<b>-90</b>	<b>-50</b>	<b>+5</b>	<b>+68</b>	<b>+109</b>	<b>+76</b>	<b>-2.4%</b>	<b>-1.3%</b>	<b>+0.1%</b>	<b>+1.9%</b>	<b>+3.0%</b>	<b>+2.1%</b>
Dietitians	18	+6	+5	+6	+4	-1	+1	+50.3%	+34.6%	+48.6%	+29.2%	-4.0%	+8.0%
Occupational Therapists	291	+90	+40	+43	+50	+27	+13	+44.5%	+15.9%	+17.1%	+20.9%	+10.2%	+4.5%



Mar 2021 (Dec 2015 figure: 15,715)	WTE Mar 2021	WTE change since Dec 15	WTE change since Dec 16	WTE change since Dec 17	WTE change since Dec 18	WTE change since Dec 19	WTE change since Dec 20	% change since Dec 15	% change since Dec 16	% change since Dec 17	% change since Dec 18	% change since Dec 19	% change since Dec 20
<b>Overall</b>	<b>19,039</b>	<b>+3,324</b>	<b>+2,285</b>	<b>+1,642</b>	<b>+1,220</b>	<b>+736</b>	<b>+95</b>	<b>+21.2%</b>	<b>+13.6%</b>	<b>+9.4%</b>	<b>+6.8%</b>	<b>+4.0%</b>	<b>+0.5%</b>
Physiotherapists	192	+26	+7	+7	+11	+3	-1	+15.8%	+3.8%	+3.8%	+6.0%	+1.3%	-0.6%
Podiatrists & Chiropodists		-0	-0	-0				-100.0%	-100.0%	-100.0%	-100.0%	-100.0%	-100.0%
Speech & Language Therapists	302	+89	+31	+19	+23	+9	-6	+41.6%	+11.5%	+6.8%	+8.2%	+3.1%	-1.8%
<b>Therapy Professions</b>	<b>802</b>	<b>+210</b>	<b>+82</b>	<b>+74</b>	<b>+88</b>	<b>+38</b>	<b>+7</b>	<b>+35.5%</b>	<b>+11.5%</b>	<b>+10.2%</b>	<b>+12.3%</b>	<b>+5.0%</b>	<b>+0.9%</b>
Audiology		-14	-13	-18				-100.0%	-100.0%	-100.0%	-100.0%	-100.0%	-100.0%
Clinical Engineering	14	-4	-4	-4	+2	+1	+1	-22.9%	-23.8%	-22.5%	+16.2%	+7.3%	+7.7%
Clinical Measurement	3	+2	+2	+2	+2	+2	+1	+160.0%	+160.0%	+160.0%	+160.0%	+160.0%	+30.0%
Medical Science	4	+1	+1	+1				+33.3%	+33.3%	+33.3%			
Phlebotomists					-1	-1		-100.0%	-100.0%	-100.0%	-100.0%	-100.0%	-100.0%
Radiographers	1												
<b>Health Science/ Diagnostics</b>	<b>22</b>	<b>-15</b>	<b>-14</b>	<b>-19</b>	<b>+3</b>	<b>+2</b>	<b>+2</b>	<b>-41.8%</b>	<b>-40.1%</b>	<b>-47.3%</b>	<b>+13.4%</b>	<b>+7.7%</b>	<b>+8.0%</b>
<b>Social Care</b>	<b>2,802</b>	<b>+863</b>	<b>+611</b>	<b>+456</b>	<b>+313</b>	<b>+207</b>	<b>+13</b>	<b>+44.5%</b>	<b>+27.9%</b>	<b>+19.4%</b>	<b>+12.6%</b>	<b>+8.0%</b>	<b>+0.5%</b>
<b>Social Workers</b>	<b>232</b>	<b>+43</b>	<b>+17</b>	<b>+12</b>	<b>+13</b>	<b>+13</b>	<b>+4</b>	<b>+22.8%</b>	<b>+7.7%</b>	<b>+5.3%</b>	<b>+5.9%</b>	<b>+6.2%</b>	<b>+1.8%</b>
<b>Psychologists</b>	<b>232</b>	<b>+41</b>	<b>+23</b>	<b>+9</b>	<b>+26</b>	<b>+28</b>	<b>+3</b>	<b>+21.3%</b>	<b>+10.8%</b>	<b>+3.9%</b>	<b>+12.5%</b>	<b>+13.9%</b>	<b>+1.4%</b>
<b>Pharmacy</b>	<b>6</b>	<b>+0</b>	<b>+0</b>	<b>+0</b>	<b>-1</b>	<b>-0</b>	<b>+0</b>	<b>+4.2%</b>	<b>+4.2%</b>	<b>+4.9%</b>	<b>-8.7%</b>	<b>-5.8%</b>	<b>+6.0%</b>
Counsellor Therapists	21	+4	+4	+2	+3	+2	+1	+26.7%	+25.2%	+8.5%	+18.7%	+11.5%	+6.7%
HSCP Trainees/ Students		-3	-2	-1				-100.0%	-100.0%	-100.0%	-100.0%	-100.0%	-100.0%
Other Health & Social Care	43	-19	-15	-16	-9	-7	-2	-30.1%	-25.9%	-26.5%	-16.7%	-14.5%	-4.2%
Play Therapists/ Specialists	11	-2	-3	-2	-4	-5	+0	-16.8%	-20.1%	-17.2%	-25.1%	-29.4%	+0.4%
<b>H&amp;SC, Other</b>	<b>75</b>	<b>-20</b>	<b>-16</b>	<b>-17</b>	<b>-9</b>	<b>-10</b>	<b>-1</b>	<b>-20.6%</b>	<b>-17.5%</b>	<b>-18.2%</b>	<b>-10.7%</b>	<b>-11.4%</b>	<b>-0.7%</b>
<b>Health &amp; Social Care Professionals</b>	<b>4,172</b>	<b>+1,122</b>	<b>+702</b>	<b>+515</b>	<b>+433</b>	<b>+278</b>	<b>+29</b>	<b>+36.8%</b>	<b>+20.2%</b>	<b>+14.1%</b>	<b>+11.6%</b>	<b>+7.1%</b>	<b>+0.7%</b>
Executive Management	39	+11	+10	+1	+7	+8	+3	+39.1%	+34.3%	+2.5%	+22.5%	+26.6%	+8.2%
Senior Management (VIII & GM)	176	+45	+38	+35	+31	+27	+8	+34.6%	+27.7%	+24.7%	+21.5%	+17.9%	+4.5%
<b>Management (VIII &amp; above)</b>	<b>215</b>	<b>+56</b>	<b>+48</b>	<b>+36</b>	<b>+38</b>	<b>+35</b>	<b>+11</b>	<b>+35.4%</b>	<b>+28.9%</b>	<b>+20.0%</b>	<b>+21.7%</b>	<b>+19.4%</b>	<b>+5.2%</b>
Middle Management (V-VII)	534	+191	+155	+142	+106	+70	+23	+55.5%	+40.8%	+36.1%	+24.9%	+15.1%	+4.5%
Other Administrative	14	-1	+0	-2	-2	-1	-2	-8.2%	+1.3%	-12.3%	-11.5%	-6.4%	-11.5%
<b>Administrative/ Supervisory (V to VII)</b>	<b>548</b>	<b>+189</b>	<b>+155</b>	<b>+140</b>	<b>+105</b>	<b>+69</b>	<b>+21</b>	<b>+52.8%</b>	<b>+39.4%</b>	<b>+34.2%</b>	<b>+23.6%</b>	<b>+14.4%</b>	<b>+4.1%</b>
<b>Clerical (III &amp; IV)</b>	<b>695</b>	<b>+112</b>	<b>+88</b>	<b>+63</b>	<b>+42</b>	<b>+35</b>	<b>+10</b>	<b>+19.2%</b>	<b>+14.6%</b>	<b>+10.0%</b>	<b>+6.4%</b>	<b>+5.3%</b>	<b>+1.5%</b>
<b>Management &amp; Administrative</b>	<b>1,458</b>	<b>+358</b>	<b>+292</b>	<b>+239</b>	<b>+185</b>	<b>+139</b>	<b>+42</b>	<b>+32.5%</b>	<b>+25.0%</b>	<b>+19.6%</b>	<b>+14.5%</b>	<b>+10.5%</b>	<b>+3.0%</b>
Catering	92	-25	-21	-14	-12	-6	-4	-21.1%	-18.7%	-12.8%	-11.7%	-6.0%	-4.1%
Household Services	401	-148	-107	-66	-51	-19	-5	-27.0%	-21.0%	-14.1%	-11.3%	-4.5%	-1.2%
Other Labs & Associated	1	-0	-0	+0		+0	+0	-13.3%	-2.8%	+4.0%		+4.0%	+4.0%
Other Support	136	-71	-58	-53	-55	-52	+0	-34.4%	-29.8%	-28.2%	-28.9%	-27.7%	+0.2%
Portering	18	-10	-8	-8	-7	-9	-6	-34.2%	-31.1%	-30.7%	-28.6%	-33.5%	-24.6%
<b>Support</b>	<b>648</b>	<b>-253</b>	<b>-194</b>	<b>-141</b>	<b>-126</b>	<b>-86</b>	<b>-15</b>	<b>-28.1%</b>	<b>-23.0%</b>	<b>-17.9%</b>	<b>-16.2%</b>	<b>-11.7%</b>	<b>-2.2%</b>
Maintenance	119	-8	-6	-12	-1	+3	-3	-6.5%	-4.7%	-9.3%	-0.9%	+2.3%	-2.1%
Technical Services	11	+6	+6	+6	+5	+3		+117.6%	+117.6%	+117.6%	+82.0%	+37.0%	
<b>Maintenance/ Technical</b>	<b>130</b>	<b>-2</b>	<b>+0</b>	<b>-6</b>	<b>+4</b>	<b>+6</b>	<b>-3</b>	<b>-1.7%</b>	<b>+0.1%</b>	<b>-4.6%</b>	<b>+3.1%</b>	<b>+4.6%</b>	<b>-1.9%</b>



Mar 2021 (Dec 2015 figure: 15,715)	WTE Mar 2021	WTE change since Dec 15	WTE change since Dec 16	WTE change since Dec 17	WTE change since Dec 18	WTE change since Dec 19	WTE change since Dec 20	% change since Dec 15	% change since Dec 16	% change since Dec 17	% change since Dec 18	% change since Dec 19	% change since Dec 20
<b>Overall</b>	<b>19,039</b>	<b>+3,324</b>	<b>+2,285</b>	<b>+1,642</b>	<b>+1,220</b>	<b>+736</b>	<b>+95</b>	<b>+21.2%</b>	<b>+13.6%</b>	<b>+9.4%</b>	<b>+6.8%</b>	<b>+4.0%</b>	<b>+0.5%</b>
<b>General Support</b>	<b>778</b>	<b>-256</b>	<b>-194</b>	<b>-147</b>	<b>-122</b>	<b>-80</b>	<b>-17</b>	<b>-24.7%</b>	<b>-19.9%</b>	<b>-15.9%</b>	<b>-13.5%</b>	<b>-9.4%</b>	<b>-2.2%</b>
HCA, Nurse's Aide, etc.	7,067	+1,898	+1,314	+892	+537	+251	-24	+36.7%	+22.8%	+14.4%	+8.2%	+3.7%	-0.3%
HCA (Student Nurse/Midwife COVID-19)	1	+1	+1	+1	+1	+1	+1	-100.0%	-100.0%	-100.0%	-100.0%	-100.0%	-100.0%
Health & Social Care Assistants	13	+2	+2	+4	+2	+3	+2	+22.9%	+20.0%	+41.5%	+18.1%	+34.5%	+16.5%
<b>Health Care Assistants</b>	<b>7,081</b>	<b>+1,901</b>	<b>+1,317</b>	<b>+896</b>	<b>+539</b>	<b>+255</b>	<b>-21</b>	<b>+36.7%</b>	<b>+22.8%</b>	<b>+14.5%</b>	<b>+8.2%</b>	<b>+3.7%</b>	<b>-0.3%</b>
<b>Home Help</b>	<b>90</b>	<b>-2</b>	<b>-5</b>	<b>-33</b>	<b>-22</b>	<b>-18</b>	<b>-3</b>	<b>-2.4%</b>	<b>-5.3%</b>	<b>-26.9%</b>	<b>-19.8%</b>	<b>-16.9%</b>	<b>-3.6%</b>
<b>Care, other</b>	<b>1,698</b>	<b>+294</b>	<b>+226</b>	<b>+174</b>	<b>+135</b>	<b>+59</b>	<b>-8</b>	<b>+21.0%</b>	<b>+15.3%</b>	<b>+11.4%</b>	<b>+8.7%</b>	<b>+3.6%</b>	<b>-0.5%</b>
<b>Patient &amp; Client Care</b>	<b>8,869</b>	<b>+2,193</b>	<b>+1,538</b>	<b>+1,037</b>	<b>+652</b>	<b>+295</b>	<b>-32</b>	<b>+32.9%</b>	<b>+21.0%</b>	<b>+13.2%</b>	<b>+7.9%</b>	<b>+3.4%</b>	<b>-0.4%</b>

Source: Health Service Personnel Census