

# Social Care Disability Services Employment Report: November 2020

## Employment by Staff Group

Nov 2020 (Dec 2019 figure: 18,303)	WTE Oct 2020	WTE Nov 2020	WTE change since Oct 20	% change since Oct 20	WTE change since Dec 19	WTE change since Nov 19
<b>Overall</b>	<b>18,691</b>	<b>18,873</b>	<b>+182</b>	<b>+1.0%</b>	<b>+570</b>	<b>+704</b>
Consultants	24	24	-0	-1.7%	-0	-0
Registrars	7	8	+0	+6.4%	-5	-5
SHO/ Interns	9	9	-0	-4.1%	+2	+2
Medical/ Dental, other	15	14	-1	-4.4%	+0	+0
<b>Medical &amp; Dental</b>	<b>56</b>	<b>55</b>	<b>-1</b>	<b>-1.8%</b>	<b>-3</b>	<b>-3</b>
Nurse/ Midwife Manager	873	896	+22	+2.6%	+2	+3
Nurse/ Midwife Specialist & AN/MP	62	65	+3	+5.1%	+3	+3
Staff Nurse/ Staff Midwife	2,532	2,576	+44	+1.8%	+4	+27
Public Health Nurse	6	7	+1	+8.5%	+0	+1
<i>Pre-registration Nurse/ Midwife Intern</i>	7	3.59	-3	-48.6%	-25	-13
<i>Pre-registration Nurse Intern (COVID-19)</i>	47	40.87	-6	-12.1%	+41	+41
<i>Post-registration Nurse/ Midwife Student</i>	2	1.88	+0	+1.6%	+2	+2
<i>Nursing/ Midwifery awaiting registration</i>	13	13.00	+0	+2.0%	-1	+8
Nursing/ Midwifery Student	68	59	-9	-12.9%	+17	+38
Nursing/ Midwifery other	45	24	-21	-46.6%	+2	+2
<b>Nursing &amp; Midwifery</b>	<b>3,586</b>	<b>3,627</b>	<b>+41</b>	<b>+1.1%</b>	<b>+29</b>	<b>+73</b>
Therapy Professions	785	794	+9	+1.1%	+29	+38
Health Science/ Diagnostics	20	21	+1	+5.0%	+1	+1
Social Care	2,718	2,781	+63	+2.3%	+186	+206
Social Workers	223	227	+3	+1.5%	+8	+9
Psychologists	227	233	+6	+2.5%	+29	+32
Pharmacy	7	6	-1	-13.9%	-1	-1
H&SC, Other	81	80	-0	-0.5%	-5	-4
<b>Health &amp; Social Care Professionals</b>	<b>4,061</b>	<b>4,141</b>	<b>+80</b>	<b>+2.0%</b>	<b>+247</b>	<b>+281</b>
Management (VIII & above)	200	204	+4	+1.8%	+24	+21
Administrative/ Supervisory (V to VII)	514	519	+5	+1.0%	+40	+43
Clerical (III & IV)	679	685	+5	+0.8%	+25	+33
<b>Management &amp; Administrative</b>	<b>1,393</b>	<b>1,407</b>	<b>+14</b>	<b>+1.0%</b>	<b>+88</b>	<b>+96</b>
Support	669	675	+6	+0.9%	-59	-71
Maintenance/ Technical	129	132	+3	+2.7%	+8	+7
<b>General Support</b>	<b>797</b>	<b>807</b>	<b>+9</b>	<b>+1.2%</b>	<b>-52</b>	<b>-64</b>
Health Care Assistants	7,028	7,042	+14	+0.2%	+216	+251
Home Help	105	98	-7	-6.9%	-11	-9
Care, other	1,664	1,696	+31	+1.9%	+56	+79
<b>Patient &amp; Client Care</b>	<b>8,798</b>	<b>8,836</b>	<b>+38</b>	<b>+0.4%</b>	<b>+261</b>	<b>+321</b>

## Social Care Disability Services Employment by Administration (HSE / S38): November 2020

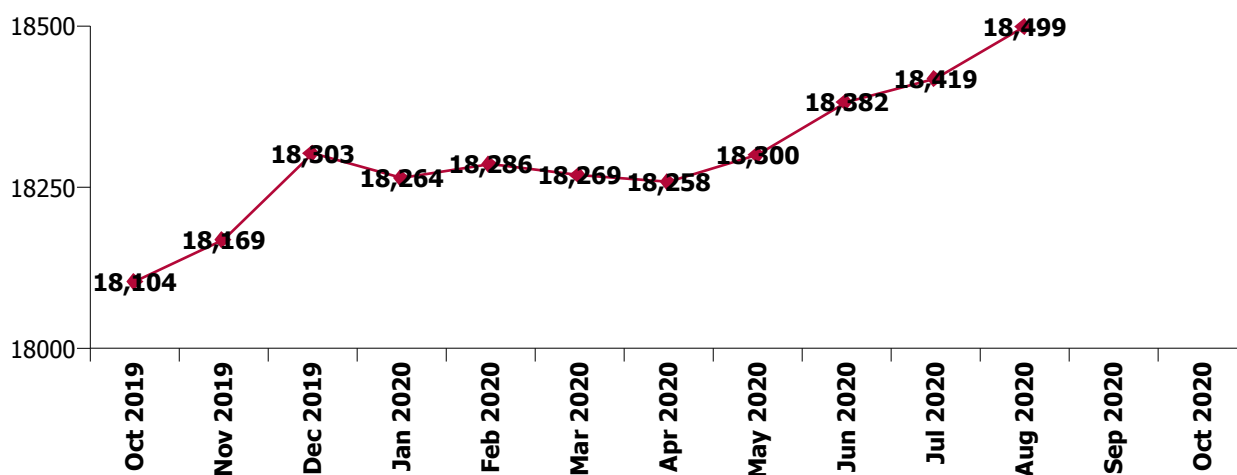
Nov 2020 (Dec 2019 figure: 18,303)	WTE Oct 2020	WTE Nov 2020	WTE change since Oct 20	% change since Oct 20	WTE change since Dec 19	WTE change since Nov 19
<b>Overall</b>	<b>18,691</b>	<b>18,873</b>	<b>+182</b>	<b>+1.0%</b>	<b>+570</b>	<b>+704</b>
<b>HSE</b>	<b>4,062</b>	<b>4,085</b>	<b>+24</b>	<b>+0.6%</b>	<b>+182</b>	<b>+226</b>
<b>Section 38</b>	<b>14,629</b>	<b>14,788</b>	<b>+158</b>	<b>+1.1%</b>	<b>+388</b>	<b>+478</b>

### HSE

Nov 2020 (Dec 2019 figure: 3,903)	WTE Oct 2020	WTE Nov 2020	WTE change since Oct 20	% change since Oct 20	WTE change since Dec 19	WTE change since Nov 19
<b>Overall</b>	<b>4,062</b>	<b>4,085</b>	<b>+24</b>	<b>+0.6%</b>	<b>+182</b>	<b>+226</b>
Consultants	8	8.50	+0	+0.1%	+1	+1
Registrars	1	1.00			-2	-2
SHO/ Interns	2	2.00			+2	+2
Medical/ Dental, other	7	6.33	-1	-9.6%	+0	+0
<b>Medical &amp; Dental</b>	<b>18</b>	<b>18</b>	<b>-1</b>	<b>-3.6%</b>	<b>+1</b>	<b>+1</b>
Nurse/ Midwife Manager	263	264.92	+2	+0.7%	+7	+12
Nurse/ Midwife Specialist & AN/MP	15	14.55	-1	-5.7%	+1	+1
Staff Nurse/ Staff Midwife	764	769.77	+6	+0.7%	-21	-17
Public Health Nurse	6	6.61	+1	+8.5%	+0	+1
Pre-registration Nurse/ Midwife Intern	6	3.59	-2	-40.1%	+0	-7
Pre-registration Nurse Intern (COVID-19)	25	17.08	-8	-31.4%	+17	+17
Nursing/ Midwifery awaiting registration	13	13.00	+0	+2.0%	-1	+8
Nursing/ Midwifery Student	44	33.67	-10	-22.8%	+17	+18
Nursing/ Midwifery other	8	7.86	+0	+1.7%	+0	+0
<b>Nursing &amp; Midwifery</b>	<b>1,100</b>	<b>1,097</b>	<b>-3</b>	<b>-0.2%</b>	<b>+3</b>	<b>+14</b>
Therapy Professions	371	372.35	+1	+0.3%	+41	+47
Health Science/ Diagnostics	4	3.95			+2	+2
Social Care	93	98.28	+5	+5.9%	+9	+12
Social Workers	66	67.46	+1	+2.2%	+10	+10
Psychologists	84	87.42	+3	+3.8%	+11	+15
H&SC, Other	24	24.76	+0	+1.2%	-2	-2
<b>Health &amp; Social Care Professionals</b>	<b>643</b>	<b>654</b>	<b>+11</b>	<b>+1.8%</b>	<b>+72</b>	<b>+84</b>
Management (VIII & above)	58	59.27	+1	+2.3%	+15	+14
Administrative/ Supervisory (V to VII)	159	162.79	+4	+2.4%	+21	+26
Clerical (III & IV)	194	196.18	+2	+1.0%	+18	+24
<b>Management &amp; Administrative</b>	<b>411</b>	<b>418</b>	<b>+7</b>	<b>+1.7%</b>	<b>+54</b>	<b>+63</b>
Support	85	86.98	+2	+1.9%	-1	-1
Maintenance/ Technical	25	24.75	+0	+0.4%	+4	+3
<b>General Support</b>	<b>110</b>	<b>112</b>	<b>+2</b>	<b>+1.6%</b>	<b>+2</b>	<b>+2</b>
Health Care Assistants	1,539	1,547.28	+8	+0.5%	+29	+38
Home Help	105	98.01	-7	-6.9%	-11	-9
Care, other	135	140.63	+5	+4.1%	+32	+34
<b>Patient &amp; Client Care</b>	<b>1,779</b>	<b>1,786</b>	<b>+7</b>	<b>+0.4%</b>	<b>+50</b>	<b>+62</b>

## Section 38

Nov 2020 (Dec 2019 figure: 14,400)	WTE Oct 2020	WTE Nov 2020	WTE change since Oct 20	% change since Oct 20	WTE change since Dec 19	WTE change since Nov 19
<b>Overall</b>	<b>14,629</b>	<b>14,788</b>	<b>+158</b>	<b>+1.1%</b>	<b>+388</b>	<b>+478</b>
Consultants	16	15.08	-0	-2.7%	-1	-1
Registrars	6	6.97	+0	+7.4%	-3	-3
SHO/ Interns	7	6.86	-0	-5.2%	-0	-0
Medical/ Dental, other	8	8.09				
<b>Medical &amp; Dental</b>	<b>37</b>	<b>37</b>	<b>-0</b>	<b>-0.9%</b>	<b>-4</b>	<b>-4</b>
Nurse/ Midwife Manager	610	630.60	+21	+3.4%	-5	-9
Nurse/ Midwife Specialist & AN/MP	47	50.73	+4	+8.7%	+3	+3
Staff Nurse/ Staff Midwife	1,768	1,806.71	+39	+2.2%	+25	+44
Pre-registration Nurse/ Midwife Intern	1		-1	-100.0%	-25	-6
Pre-registration Nurse Intern (COVID-19)	22	23.79	+2	+10.0%	+24	+24
Post-registration Nurse/ Midwife Student	2	1.88	+0	+1.6%	+2	+2
Nursing/ Midwifery Student	24	25.67	+1	+4.9%	+1	+20
Nursing/ Midwifery other	37	16.16	-21	-56.6%	+2	+2
<b>Nursing &amp; Midwifery</b>	<b>2,486</b>	<b>2,530</b>	<b>+44</b>	<b>+1.8%</b>	<b>+25</b>	<b>+59</b>
Therapy Professions	414	421.59	+8	+1.9%	-11	-9
Health Science/ Diagnostics	16	17.00	+1	+6.3%	-1	-1
Social Care	2,625	2,682.47	+57	+2.2%	+176	+194
Social Workers	157	159.15	+2	+1.3%	-2	-1
Psychologists	143	145.61	+3	+1.8%	+18	+18
Pharmacy	7	5.90	-1	-13.9%	-1	-1
H&SC, Other	56	55.38	-1	-1.2%	-3	-3
<b>Health &amp; Social Care Professionals</b>	<b>3,418</b>	<b>3,487</b>	<b>+69</b>	<b>+2.0%</b>	<b>+175</b>	<b>+197</b>
Management (VIII & above)	142	144.27	+2	+1.6%	+9	+7
Administrative/ Supervisory (V to VII)	355	356.10	+1	+0.4%	+18	+17
Clerical (III & IV)	485	488.51	+3	+0.7%	+7	+9
<b>Management &amp; Administrative</b>	<b>982</b>	<b>989</b>	<b>+7</b>	<b>+0.7%</b>	<b>+34</b>	<b>+33</b>
<b>General Support</b>	<b>687</b>	<b>695</b>	<b>+8</b>	<b>+1.1%</b>	<b>-54</b>	<b>-66</b>
<b>Patient &amp; Client Care</b>	<b>7,018</b>	<b>7,050</b>	<b>+31</b>	<b>+0.4%</b>	<b>+211</b>	<b>+259</b>



## Social Care Disability Services Employment by CHO Nov 2020

### CHO 1

Nov 2020 (Dec 2019 figure: 1,498)	WTE Oct 2020	WTE Nov 2020	WTE change since Oct 20	% change since Oct 20	WTE change since Dec 19	WTE change since Nov 19
<b>Overall</b>	<b>1,553</b>	<b>1,557</b>	<b>+4</b>	<b>+0.2%</b>	<b>+58</b>	<b>+63</b>
Consultants				-100.0%		
Medical/ Dental, other	3	3			+0	+0
<b>Medical &amp; Dental</b>	<b>3</b>	<b>3</b>			<b>+0</b>	<b>+0</b>
Nurse/ Midwife Manager	109	110	+0	+0.2%	+4	+5
Nurse/ Midwife Specialist & AN/MP	10	9	-1	-9.3%	+2	+2
Staff Nurse/ Staff Midwife	322	328	+6	+1.8%	+4	+3
<i>Pre-registration Nurse/ Midwife Intern</i>				-100.0%	-11	-11
<i>Pre-registration Nurse Intern (COVID-19)</i>	20	13	-7	-36.7%	+13	+13
<i>Nursing/ Midwifery awaiting registration</i>	11	11			+11	+11
Nursing/ Midwifery Student	31	24	-7	-23.7%	+10	+13
Nursing/ Midwifery other	5	5	+0	+3.2%	+0	+0
<b>Nursing &amp; Midwifery</b>	<b>477</b>	<b>475</b>	<b>-2</b>	<b>-0.4%</b>	<b>+20</b>	<b>+23</b>
Therapy Professions	44	44	-1	-1.6%	+1	+0
Social Care	9	10	+1	+12.4%	+2	+2
Social Workers	18	19	+1	+3.9%	+3	+4
Psychologists	11	10	-0	-2.7%	+6	+6
H&SC, Other	9	9	+0	+1.2%	-3	-3
<b>Health &amp; Social Care Professionals</b>	<b>91</b>	<b>92</b>	<b>+1</b>	<b>+1.0%</b>	<b>+9</b>	<b>+9</b>
Management (VIII & above)	16	16	-0	-0.2%	+2	+1
Administrative/ Supervisory (V to VII)	33	34	+1	+2.8%	+7	+8
Clerical (III & IV)	51	52	+1	+1.8%	+2	+3
<b>Management &amp; Administrative</b>	<b>100</b>	<b>102</b>	<b>+2</b>	<b>+1.8%</b>	<b>+10</b>	<b>+12</b>
Support	49	49	+0	+0.2%	+0	+1
Maintenance/ Technical	6	6	-0	-1.2%	-0	-0
<b>General Support</b>	<b>55</b>	<b>55</b>	<b>+0</b>	<b>+0.1%</b>	<b>+0</b>	<b>+1</b>
Health Care Assistants	771	773	+2	+0.2%	+12	+11
Home Help	15	14	-0	-2.2%	+1	+1
Care, other	41	43	+2	+3.8%	+6	+6
<b>Patient &amp; Client Care</b>	<b>827</b>	<b>830</b>	<b>+3</b>	<b>+0.4%</b>	<b>+18</b>	<b>+18</b>

## CHO 2

Nov 2020 (Dec 2019 figure: 1,497)	WTE Oct 2020	WTE Nov 2020	WTE change since Oct 20	% change since Oct 20	WTE change since Dec 19	WTE change since Nov 19
<b>Overall</b>	<b>1,491</b>	<b>1,505</b>	<b>+13</b>	<b>+0.9%</b>	<b>+8</b>	<b>+14</b>
Consultants	3	3				
Registrars	2	2				
Medical/ Dental, other	1	1				
<b>Medical &amp; Dental</b>	<b>6</b>	<b>6</b>				
Nurse/ Midwife Manager	77	77	-0	-0.1%	-0	+2
Nurse/ Midwife Specialist & AN/MP	6	6	+0	+1.8%	-0	-0
Staff Nurse/ Staff Midwife	160	162	+2	+1.4%	-4	-5
<i>Pre-registration Nurse Intern (COVID-19)</i>	0	1	+0	+139.1%	+1	+1
Nursing/ Midwifery Student	0	1	+0	+139.1%	+1	+1
<b>Nursing &amp; Midwifery</b>	<b>243</b>	<b>245</b>	<b>+3</b>	<b>+1.1%</b>	<b>-3</b>	<b>-2</b>
Therapy Professions	34	35	+1	+2.8%	-6	-6
Social Care	237	241	+4	+1.6%	+19	+16
Social Workers	26	25	-0	-1.6%	-1	-1
Psychologists	14	15	+0	+3.1%	-1	-1
H&SC, Other	14	16	+1	+10.4%	-0	+0
<b>Health &amp; Social Care Professionals</b>	<b>325</b>	<b>332</b>	<b>+6</b>	<b>+1.9%</b>	<b>+11</b>	<b>+8</b>
Management (VIII & above)	18	17	-1	-5.6%	+1	+1
Administrative/ Supervisory (V to VII)	42	43	+1	+2.1%	+3	+2
Clerical (III & IV)	50	50	+0	+0.1%	+0	+1
<b>Management &amp; Administrative</b>	<b>110</b>	<b>110</b>	<b>-0</b>	<b>-0.0%</b>	<b>+4</b>	<b>+4</b>
Support	42	43	+1	+3.0%	-2	-4
Maintenance/ Technical	12	13	+1	+5.6%	-0	-0
<b>General Support</b>	<b>54</b>	<b>56</b>	<b>+2</b>	<b>+3.6%</b>	<b>-2</b>	<b>-4</b>
Health Care Assistants	622	620	-2	-0.3%	-3	+3
Care, other	131	135	+5	+3.5%	+1	+5
<b>Patient &amp; Client Care</b>	<b>753</b>	<b>756</b>	<b>+3</b>	<b>+0.3%</b>	<b>-2</b>	<b>+9</b>

### CHO 3

Nov 2020 (Dec 2019 figure: 1,823)	WTE Oct 2020	WTE Nov 2020	WTE change since Oct 20	% change since Oct 20	WTE change since Dec 19	WTE change since Nov 19
<b>Overall</b>	<b>1,904</b>	<b>1,929</b>	<b>+25</b>	<b>+1.3%</b>	<b>+105</b>	<b>+108</b>
Consultants	2	1	-0	-27.6%	+0	+0
Medical/ Dental, other	1	1				
<b>Medical &amp; Dental</b>	<b>2</b>	<b>2</b>	<b>-0</b>	<b>-17.1%</b>	<b>+0</b>	<b>+0</b>
Nurse/ Midwife Manager	77	73	-3	-4.3%	-3	-2
Nurse/ Midwife Specialist & AN/MP	11	11			-2	-1
Staff Nurse/ Staff Midwife	259	270	+11	+4.4%	+23	+20
Pre-registration Nurse/ Midwife Intern				-100.0%	-7	
Pre-registration Nurse Intern (COVID-19)	3	1	-1	-44.8%	+1	+1
Nursing/ Midwifery Student	3	1	-1	-44.8%	-10	+1
Nursing/ Midwifery other	4	4				
<b>Nursing &amp; Midwifery</b>	<b>353</b>	<b>360</b>	<b>+7</b>	<b>+2.0%</b>	<b>+8</b>	<b>+19</b>
Therapy Professions	78	82	+4	+5.1%	+8	+8
Health Science/ Diagnostics	2	2			+2	+2
Social Care	269	276	+7	+2.6%	+35	+30
Social Workers	15	16	+1	+6.2%	-1	-1
Psychologists	20	20	-0	-0.0%	+4	+4
H&SC, Other	11	11	+0	+0.6%	-1	-0
<b>Health &amp; Social Care Professionals</b>	<b>395</b>	<b>407</b>	<b>+12</b>	<b>+3.0%</b>	<b>+48</b>	<b>+44</b>
Management (VIII & above)	8	8	-0	-0.3%	+1	+1
Administrative/ Supervisory (V to VII)	45	46	+1	+2.5%	+5	+5
Clerical (III & IV)	59	60	+1	+1.5%	+1	+0
<b>Management &amp; Administrative</b>	<b>112</b>	<b>114</b>	<b>+2</b>	<b>+1.8%</b>	<b>+7</b>	<b>+7</b>
Support	55	54	-1	-2.7%	+1	+0
Maintenance/ Technical	18	18	+0	+0.9%	+4	+4
<b>General Support</b>	<b>73</b>	<b>72</b>	<b>-1</b>	<b>-1.8%</b>	<b>+5</b>	<b>+4</b>
Health Care Assistants	793	794	+2	+0.2%	+30	+28
Care, other	176	180	+4	+2.4%	+7	+6
<b>Patient &amp; Client Care</b>	<b>969</b>	<b>974</b>	<b>+6</b>	<b>+0.6%</b>	<b>+37</b>	<b>+34</b>

## CHO 4

Nov 2020 (Dec 2019 figure: 2,439)	WTE Oct 2020	WTE Nov 2020	WTE change since Oct 20	% change since Oct 20	WTE change since Dec 19	WTE change since Nov 19
<b>Overall</b>	<b>2,547</b>	<b>2,546</b>	<b>-0</b>	<b>-0.0%</b>	<b>+108</b>	<b>+109</b>
Consultants	2	3	+0	+0.4%	+1	+1
Medical/ Dental, other	1	0	-1	-67.0%		
<b>Medical &amp; Dental</b>	<b>3</b>	<b>3</b>	<b>-1</b>	<b>-18.9%</b>	<b>+1</b>	<b>+1</b>
Nurse/ Midwife Manager	90	90	+0	+0.1%	+1	-1
Nurse/ Midwife Specialist & AN/MP	14	14			+1	+1
Staff Nurse/ Staff Midwife	296	300	+5	+1.6%	-9	-7
Pre-registration Nurse/ Midwife Intern				-100.0%	-8	-6
Pre-registration Nurse Intern (COVID-19)	17	17			+17	+17
Nursing/ Midwifery awaiting registration	2	2	+0	+14.3%	+2	+1
Nursing/ Midwifery Student	19	19	+0	+1.3%	+12	+12
Nursing/ Midwifery other				-100.0%	-1	-1
<b>Nursing &amp; Midwifery</b>	<b>419</b>	<b>424</b>	<b>+5</b>	<b>+1.2%</b>	<b>+5</b>	<b>+5</b>
Therapy Professions	103	103	-0	-0.1%	-5	-6
Social Care	239	244	+5	+1.9%	+17	+16
Social Workers	27	27	+0	+0.2%	-0	-1
Psychologists	36	36	+0	+0.9%	+1	+2
H&SC, Other	10	10	+0	+0.8%	+2	+2
<b>Health &amp; Social Care Professionals</b>	<b>414</b>	<b>419</b>	<b>+5</b>	<b>+1.2%</b>	<b>+15</b>	<b>+12</b>
Management (VIII & above)	23	21	-1	-6.3%	-1	-1
Administrative/ Supervisory (V to VII)	59	58	-0	-0.8%	+5	+4
Clerical (III & IV)	91	90	-1	-1.0%	+6	+5
<b>Management &amp; Administrative</b>	<b>173</b>	<b>170</b>	<b>-3</b>	<b>-1.6%</b>	<b>+10</b>	<b>+9</b>
Support	142	143	+2	+1.2%	+2	+4
Maintenance/ Technical	11	13	+2	+18.0%	+3	+3
<b>General Support</b>	<b>153</b>	<b>157</b>	<b>+4</b>	<b>+2.4%</b>	<b>+5</b>	<b>+6</b>
Health Care Assistants	1,060	1,053	-7	-0.7%	+58	+60
Care, other	325	321	-4	-1.1%	+14	+15
<b>Patient &amp; Client Care</b>	<b>1,385</b>	<b>1,374</b>	<b>-11</b>	<b>-0.8%</b>	<b>+72</b>	<b>+76</b>

## CHO 5

Nov 2020 (Dec 2019 figure: 1,505)	WTE Oct 2020	WTE Nov 2020	WTE change since Oct 20	% change since Oct 20	WTE change since Dec 19	WTE change since Nov 19
<b>Overall</b>	<b>1,537</b>	<b>1,541</b>	<b>+4</b>	<b>+0.3%</b>	<b>+36</b>	<b>+54</b>
Consultants	1	1			-0	-0
Medical/ Dental, other				-100.0%		
<b>Medical &amp; Dental</b>	<b>1</b>	<b>1</b>			<b>-0</b>	<b>-0</b>
Nurse/ Midwife Manager	69	71	+1	+2.0%	+5	+2
Nurse/ Midwife Specialist & AN/MP	2	2				
Staff Nurse/ Staff Midwife	159	161	+2	+1.1%	-9	+1
Public Health Nurse	5	6	+1	+10.5%	+0	+1
<i>Pre-registration Nurse Intern (COVID-19)</i>	5	4	-1	-24.1%	+4	+4
<i>Post-registration Nurse/ Midwife Student</i>	2	2	+0	+1.6%	+2	+2
<i>Nursing/ Midwifery awaiting registration</i>				-100.0%		-4
Nursing/ Midwifery Student	7	6	-1	-17.1%	+4	+2
<b>Nursing &amp; Midwifery</b>	<b>243</b>	<b>245</b>	<b>+3</b>	<b>+1.1%</b>	<b>+1</b>	<b>+5</b>
Therapy Professions	62	63	+1	+2.2%	+0	+4
Social Care	143	144	+0	+0.2%	-10	-9
Social Workers	23	25	+1	+5.7%	+4	+3
Psychologists	19	19	+0	+2.2%	+5	+7
H&SC, Other	7	5	-2	-24.1%	-2	-2
<b>Health &amp; Social Care Professionals</b>	<b>254</b>	<b>256</b>	<b>+2</b>	<b>+0.7%</b>	<b>-3</b>	<b>+4</b>
Management (VIII & above)	12	13	+1	+8.1%	+2	+2
Administrative/ Supervisory (V to VII)	40	40	+1	+1.6%	+1	+5
Clerical (III & IV)	61	62	+1	+1.2%	+1	+2
<b>Management &amp; Administrative</b>	<b>112</b>	<b>115</b>	<b>+2</b>	<b>+2.1%</b>	<b>+4</b>	<b>+8</b>
Support	13	13	+0	+0.7%	-2	-6
Maintenance/ Technical	7	7				-0
<b>General Support</b>	<b>20</b>	<b>20</b>	<b>+0</b>	<b>+0.4%</b>	<b>-2</b>	<b>-6</b>
Health Care Assistants	708	709	+0	+0.1%	+38	+38
Home Help	49	44	-6	-11.5%	-10	-9
Care, other	149	152	+3	+1.9%	+8	+14
<b>Patient &amp; Client Care</b>	<b>907</b>	<b>904</b>	<b>-2</b>	<b>-0.3%</b>	<b>+36</b>	<b>+43</b>



## CHO 6

Nov 2020 (Dec 2019 figure: 1,198)	WTE Oct 2020	WTE Nov 2020	WTE change since Oct 20	% change since Oct 20	WTE change since Dec 19	WTE change since Nov 19
<b>Overall</b>	<b>1,204</b>	<b>1,233</b>	<b>+29</b>	<b>+2.4%</b>	<b>+36</b>	<b>+42</b>
Consultants	3	3				
Medical/ Dental, other	1	1				
<b>Medical &amp; Dental</b>	<b>4</b>	<b>4</b>				
Nurse/ Midwife Manager	43	42	-0	-0.6%	-1	-2
Staff Nurse/ Staff Midwife	140	145	+5	+3.7%	-2	+0
<b>Nursing &amp; Midwifery</b>	<b>183</b>	<b>188</b>	<b>+5</b>	<b>+2.7%</b>	<b>-3</b>	<b>-2</b>
Therapy Professions	43	42	-1	-3.0%	-0	-3
Social Care	350	363	+12	+3.5%	+28	+30
Social Workers	10	10	-0	-0.0%	-1	-2
Psychologists	14	15	+1	+7.4%	+2	+1
H&SC, Other	1	1	+0	+3.7%	-0	-0
<b>Health &amp; Social Care Professionals</b>	<b>419</b>	<b>431</b>	<b>+12</b>	<b>+2.9%</b>	<b>+29</b>	<b>+25</b>
Management (VIII & above)	32	32	+0	+0.1%	+1	
Administrative/ Supervisory (V to VII)	54	54	-0	-0.2%	+1	+2
Clerical (III & IV)	58	56	-1	-2.6%	+3	+3
<b>Management &amp; Administrative</b>	<b>144</b>	<b>142</b>	<b>-2</b>	<b>-1.1%</b>	<b>+4</b>	<b>+5</b>
Support	27	27	-0	-0.6%	+4	-4
Maintenance/ Technical	5	6	+1	+20.0%	-1	
<b>General Support</b>	<b>32</b>	<b>33</b>	<b>+1</b>	<b>+2.6%</b>	<b>+3</b>	<b>-4</b>
Health Care Assistants	184	186	+2	+1.3%	-0	+9
Care, other	239	250	+10	+4.4%	+3	+9
<b>Patient &amp; Client Care</b>	<b>423</b>	<b>436</b>	<b>+13</b>	<b>+3.0%</b>	<b>+3</b>	<b>+18</b>

## CHO 7

Nov 2020 (Dec 2019 figure: 2,982)	WTE Oct 2020	WTE Nov 2020	WTE change since Oct 20	% change since Oct 20	WTE change since Dec 19	WTE change since Nov 19
<b>Overall</b>	<b>3,028</b>	<b>3,077</b>	<b>+49</b>	<b>+1.6%</b>	<b>+96</b>	<b>+137</b>
Consultants	1	1				
Registrars	2	3	+0	+19.3%	-0	+0
SHO/ Interns	7	7	-0	-5.2%	-0	-0
Medical/ Dental, other	1	1				
<b>Medical &amp; Dental</b>	<b>11</b>	<b>11</b>	<b>+0</b>	<b>+0.9%</b>	<b>-0</b>	<b>+0</b>
Nurse/ Midwife Manager	117	116	-1	-1.1%	-6	-7
Nurse/ Midwife Specialist & AN/MP	4	4			-1	-1
Staff Nurse/ Staff Midwife	373	377	+5	+1.3%	+3	+9
Nursing/ Midwifery other	2	2			+1	+1
<b>Nursing &amp; Midwifery</b>	<b>495</b>	<b>499</b>	<b>+4</b>	<b>+0.7%</b>	<b>-3</b>	<b>+2</b>
Therapy Professions	134	137	+3	+2.1%	+15	+21
Health Science/ Diagnostics	3	3				
Social Care	373	383	+10	+2.6%	+23	+32
Social Workers	33	33	-0	-1.1%	-1	+2
Psychologists	31	31	+0	+0.4%	+3	+4
Pharmacy	5	4	-1	-19.6%	-1	-1
H&SC, Other	2	2				
<b>Health &amp; Social Care Professionals</b>	<b>581</b>	<b>592</b>	<b>+11</b>	<b>+1.9%</b>	<b>+39</b>	<b>+58</b>
Management (VIII & above)	39	44	+5	+13.4%	+12	+12
Administrative/ Supervisory (V to VII)	85	87	+2	+2.6%	+8	+6
Clerical (III & IV)	96	99	+3	+3.5%	+8	+12
<b>Management &amp; Administrative</b>	<b>219</b>	<b>230</b>	<b>+11</b>	<b>+4.9%</b>	<b>+27</b>	<b>+30</b>
Support	154	157	+3	+2.0%	-10	-11
Maintenance/ Technical	32	32	-0	-1.1%	+3	+3
<b>General Support</b>	<b>186</b>	<b>188</b>	<b>+3</b>	<b>+1.5%</b>	<b>-7</b>	<b>-8</b>
Health Care Assistants	1,130	1,140	+10	+0.9%	+28	+39
Home Help	18	17	-0	-0.9%	-2	-3
Care, other	388	399	+11	+2.8%	+13	+18
<b>Patient &amp; Client Care</b>	<b>1,536</b>	<b>1,557</b>	<b>+21</b>	<b>+1.4%</b>	<b>+39</b>	<b>+55</b>

## CHO 8

Nov 2020 (Dec 2019 figure: 2,162)	WTE Oct 2020	WTE Nov 2020	WTE change since Oct 20	% change since Oct 20	WTE change since Dec 19	WTE change since Nov 19
<b>Overall</b>	<b>2,171</b>	<b>2,194</b>	<b>+23</b>	<b>+1.1%</b>	<b>+31</b>	<b>+55</b>
Consultants	1	1				
Registrars	1	1			-1	-1
Medical/ Dental, other	1	1				
<b>Medical &amp; Dental</b>	<b>3</b>	<b>3</b>			<b>-1</b>	<b>-1</b>
Nurse/ Midwife Manager	97	119	+22	+22.7%	-4	-1
Nurse/ Midwife Specialist & AN/MP	4	7	+3	+77.0%	-0	-0
Staff Nurse/ Staff Midwife	314	316	+2	+0.7%	-2	+7
Public Health Nurse	1	1	-0	-2.1%	-0	-0
Pre-registration Nurse/ Midwife Intern	1		-1	-100.0%	-1	
Pre-registration Nurse Intern (COVID-19)	1	5	+4	+440.0%	+5	+5
Nursing/ Midwifery Student	2	5	+3	+155.8%	+5	+5
Nursing/ Midwifery other	27	6	-21	-79.0%	+0	+0
<b>Nursing &amp; Midwifery</b>	<b>445</b>	<b>454</b>	<b>+9</b>	<b>+2.1%</b>	<b>-1</b>	<b>+11</b>
Therapy Professions	98	98	+0	+0.3%	+6	+10
Health Science/ Diagnostics	2	2				
Social Care	374	377	+3	+0.8%	+17	+20
Social Workers	24	24	-0	-0.8%	+0	-0
Psychologists	22	24	+2	+9.8%	-1	-1
H&SC, Other	7	7	+0	+1.7%	+0	-0
<b>Health &amp; Social Care Professionals</b>	<b>527</b>	<b>532</b>	<b>+5</b>	<b>+1.0%</b>	<b>+22</b>	<b>+29</b>
Management (VIII & above)	13	13			+4	+3
Administrative/ Supervisory (V to VII)	56	54	-3	-4.5%	-2	-2
Clerical (III & IV)	87	88	+1	+1.3%	+4	+3
<b>Management &amp; Administrative</b>	<b>156</b>	<b>155</b>	<b>-1</b>	<b>-0.9%</b>	<b>+6</b>	<b>+5</b>
Support	41	43	+2	+5.4%	-3	-2
Maintenance/ Technical	15	14	-1	-6.7%	-2	-2
<b>General Support</b>	<b>56</b>	<b>57</b>	<b>+1</b>	<b>+2.2%</b>	<b>-5</b>	<b>-4</b>
Health Care Assistants	846	853	+7	+0.8%	+9	+11
Home Help	24	23	-1	-4.5%	+0	+1
Care, other	114	117	+3	+2.4%	+2	+3
<b>Patient &amp; Client Care</b>	<b>983</b>	<b>992</b>	<b>+9</b>	<b>+0.9%</b>	<b>+11</b>	<b>+15</b>

## CHO 9

Nov 2020 (Dec 2019 figure: 3,194)	WTE Oct 2020	WTE Nov 2020	WTE change since Oct 20	% change since Oct 20	WTE change since Dec 19	WTE change since Nov 19
<b>Overall</b>	<b>3,251</b>	<b>3,285</b>	<b>+35</b>	<b>+1.1%</b>	<b>+92</b>	<b>+121</b>
Consultants	11	11			-1	-1
Registrars	2	2			-4	-4
SHO/ Interns	2	2			+2	+2
Medical/ Dental, other	6	6				
<b>Medical &amp; Dental</b>	<b>21</b>	<b>21</b>			<b>-3</b>	<b>-3</b>
Nurse/ Midwife Manager	193	197	+4	+1.8%	+5	+7
Nurse/ Midwife Specialist & AN/MP	11	12	+1	+9.3%	+3	+2
Staff Nurse/ Staff Midwife	510	516	+6	+1.3%	-1	-3
Pre-registration Nurse/ Midwife Intern	6	4	-2	-40.1%	-5	+3
Pre-registration Nurse Intern (COVID-19)	1	1	-0	-27.8%	+1	+1
Nursing/ Midwifery Student	7	4	-3	-38.6%	-4	+4
Nursing/ Midwifery other	8	8	-0	-0.2%	+1	+1
<b>Nursing &amp; Midwifery</b>	<b>729</b>	<b>738</b>	<b>+8</b>	<b>+1.1%</b>	<b>+5</b>	<b>+11</b>
Therapy Professions	189	191	+2	+0.8%	+10	+9
Health Science/ Diagnostics	13	14	+1	+7.7%	-1	-1
Social Care	722	744	+21	+2.9%	+55	+70
Social Workers	48	49	+1	+3.0%	+5	+6
Psychologists	61	63	+2	+2.6%	+10	+10
Pharmacy	2	2				
H&SC, Other	19	18	-1	-3.7%	-1	-1
<b>Health &amp; Social Care Professionals</b>	<b>1,054</b>	<b>1,080</b>	<b>+26</b>	<b>+2.5%</b>	<b>+77</b>	<b>+93</b>
Management (VIII & above)	40	40			+2	+2
Administrative/ Supervisory (V to VII)	96	99	+3	+2.6%	+11	+11
Clerical (III & IV)	126	126	+1	+0.5%	+1	+3
<b>Management &amp; Administrative</b>	<b>262</b>	<b>265</b>	<b>+3</b>	<b>+1.2%</b>	<b>+15</b>	<b>+16</b>
Support	147	146	-1	-0.7%	-50	-50
Maintenance/ Technical	22	23	+1	+4.5%	+1	+1
<b>General Support</b>	<b>169</b>	<b>169</b>	<b>+0</b>	<b>+0.0%</b>	<b>-49</b>	<b>-49</b>
Health Care Assistants	914	914	-1	-0.1%	+45	+50
Care, other	101	99	-2	-2.3%	+2	+3
<b>Patient &amp; Client Care</b>	<b>1,015</b>	<b>1,012</b>	<b>-3</b>	<b>-0.3%</b>	<b>+47</b>	<b>+53</b>

## other Community Services

Nov 2020 (Dec 2019 figure: 5)	WTE Oct 2020	WTE Nov 2020	WTE change since Oct 20	% change since Oct 20	WTE change since Dec 19	WTE change since Nov 19
<b>Overall</b>	<b>6</b>	<b>6</b>			<b>+1</b>	<b>+1</b>
Management (VIII & above)	1	1				
Administrative/ Supervisory (V to VII)	3	3			+1	+1
Clerical (III & IV)	2	2				
<b>Management &amp; Administrative</b>	<b>6</b>	<b>6</b>			<b>+1</b>	<b>+1</b>

# Social Care Disability Services Employment by CHO & Admin : Nov 2020

Nov 2020 (Dec 2019 figure: 18,303)	WTE Oct 2020	WTE Nov 2020	WTE change since Oct 20	% change since Oct 20	WTE change since Dec 19	WTE change since Nov 19
<b>Overall</b>	<b>18,691</b>	<b>18,873</b>	<b>+182</b>	<b>+1.0%</b>	<b>+570</b>	<b>+704</b>
<b>CHO 1</b>	<b>1,553</b>	<b>1,557</b>	<b>+4</b>	<b>+0.2%</b>	<b>+58</b>	<b>+63</b>
Health Service Executive	217	215	-2	-0.7%	+7	+6
Bros. of Charity, West Region	1,274	1,289	+15	+1.2%	+1	+8
Section 38 Voluntary Agencies	1,274	1,289	+15	+1.2%	+1	+8
<b>CHO 2</b>	<b>1,491</b>	<b>1,505</b>	<b>+13</b>	<b>+0.9%</b>	<b>+8</b>	<b>+14</b>
Health Service Executive	138	143	+4	+3.1%	+20	+20
Bros. of Charity, Clare	357	368	+11	+3.2%	+20	+18
Bros. of Charity, Limerick	578	580	+2	+0.3%	+60	+56
Daughters of Charity, Limerick	543	548	+5	+0.9%	+5	+12
Daughters of Charity, Roscrea	287	290	+2	+0.8%	-0	+1
Section 38 Voluntary Agencies	1,765	1,786	+21	+1.2%	+85	+88
<b>CHO 3</b>	<b>1,904</b>	<b>1,929</b>	<b>+25</b>	<b>+1.3%</b>	<b>+105</b>	<b>+108</b>
Health Service Executive	302	307	+5	+1.6%	+14	+14
Bros. of Charity, Southern	777	770	-7	-0.9%	+30	+28
Cope Foundation	1,150	1,146	-3	-0.3%	+56	+54
St. John of God, Kerry	319	323	+5	+1.4%	+8	+12
Section 38 Voluntary Agencies	2,245	2,240	-5	-0.2%	+94	+94
<b>CHO 4</b>	<b>2,547</b>	<b>2,546</b>	<b>-0</b>	<b>-0.0%</b>	<b>+108</b>	<b>+109</b>
Health Service Executive	397	395	-2	-0.5%	+13	+35
Bros. of Charity, Waterford	645	650	+6	+0.9%	+20	+26
Carriglea Cairde Services	208	208	+0	+0.1%	-6	-5
St. Patrick's, Kilkenny	287	288	+0	+0.1%	+9	-1
Section 38 Voluntary Agencies	1,140	1,146	+6	+0.6%	+23	+20
<b>CHO 5</b>	<b>1,537</b>	<b>1,541</b>	<b>+4</b>	<b>+0.3%</b>	<b>+36</b>	<b>+54</b>
Health Service Executive	241	246	+5	+1.9%	+12	+8
Children's Sunshine Home	56	57	+1	+1.8%	-2	-1
St. John of God (IDS)	462	467	+4	+0.9%	+10	+21
Sunbeam House Services	445	464	+19	+4.4%	+15	+14
Section 38 Voluntary Agencies	963	988	+25	+2.6%	+23	+35
<b>CHO 6</b>	<b>1,204</b>	<b>1,233</b>	<b>+29</b>	<b>+2.4%</b>	<b>+36</b>	<b>+42</b>
Health Service Executive	130	132	+2	+1.5%	+31	+49
Cheeverstown House	389	390	+1	+0.2%	-7	-8
Kare, Newbridge, Co Kildare	362	372	+10	+2.8%	+13	+18
Peamount Hospital (Newcastle)	476	477	+1	+0.1%	-9	-9
Stewart's Hospital, (Palmerstown)	892	913	+20	+2.3%	+61	+57
St. John of God Liffey Services	779	794	+16	+2.0%	+7	+30
Section 38 Voluntary Agencies	2,898	2,945	+47	+1.6%	+64	+88
<b>CHO 7</b>	<b>3,028</b>	<b>3,077</b>	<b>+49</b>	<b>+1.6%</b>	<b>+96</b>	<b>+137</b>
Health Service Executive	606	610	+5	+0.8%	+0	+11
Muiriosa Foundation, Laois/Offaly	314	313	-1	-0.2%	+11	+10
Muiriosa Foundation, Longford/Westmeath	280	281	+1	+0.5%	+12	+10
Muiriosa Foundation, South Kildare	335	342	+6	+1.9%	+8	+10
St. John of God, Drumcar	636	647	+11	+1.8%	+0	+15

Nov 2020 (Dec 2019 figure: 18,303)	WTE Oct 2020	WTE Nov 2020	WTE change since Oct 20	% change since Oct 20	WTE change since Dec 19	WTE change since Nov 19
<b>Overall</b>	<b>18,691</b>	<b>18,873</b>	<b>+182</b>	<b>+1.0%</b>	<b>+570</b>	<b>+704</b>
<b>Section 38 Voluntary Agencies</b>	<b>1,565</b>	<b>1,583</b>	<b>+18</b>	<b>+1.2%</b>	<b>+31</b>	<b>+45</b>
<b>CHO 8</b>	<b>2,171</b>	<b>2,194</b>	<b>+23</b>	<b>+1.1%</b>	<b>+31</b>	<b>+55</b>
<b>Health Service Executive</b>	<b>472</b>	<b>476</b>	<b>+3</b>	<b>+0.7%</b>	<b>+25</b>	<b>+21</b>
Central Remedial Clinic	295	297	+2	+0.6%	+18	+21
Daughters of Charity, Dublin	1,051	1,064	+13	+1.3%	+30	+45
St. Michael's House, Dublin	1,433	1,449	+16	+1.1%	+19	+34
<b>Section 38 Voluntary Agencies</b>	<b>2,778</b>	<b>2,810</b>	<b>+31</b>	<b>+1.1%</b>	<b>+67</b>	<b>+100</b>
<b>CHO 9</b>	<b>3,251</b>	<b>3,285</b>	<b>+35</b>	<b>+1.1%</b>	<b>+92</b>	<b>+121</b>
<b>other Community Services</b>	<b>6</b>	<b>6</b>			<b>+1</b>	<b>+1</b>

## Social Care Disability Services Employment by CHO Nov 2020

### Bros. of Charity, Clare

Nov 2020 (Dec 2019 figure: 348)	WTE Oct 2020	WTE Nov 2020	WTE change since Oct 20	% change since Oct 20	WTE change since Dec 19	WTE change since Nov 19
<b>Overall</b>	<b>357</b>	<b>368</b>	<b>+11</b>	<b>+3.2%</b>	<b>+20</b>	<b>+18</b>
Consultants	0	0	-0	-52.4%	+0	+0
<b>Medical &amp; Dental</b>	<b>0</b>	<b>0</b>	<b>-0</b>	<b>-52.4%</b>	<b>+0</b>	<b>+0</b>
Nurse/ Midwife Manager				-100.0%		
Staff Nurse/ Staff Midwife	2	2	-0	-1.5%	+0	+0
<i>Pre-registration Nurse Intern (COVID-19)</i>	1	0	-0	-25.5%	+0	+0
Nursing/ Midwifery Student	1	0	-0	-25.5%	+0	+0
<b>Nursing &amp; Midwifery</b>	<b>2</b>	<b>2</b>	<b>-0</b>	<b>-6.5%</b>	<b>+0</b>	<b>+0</b>
Social Care	81	83	+2	+2.4%	+1	-2
Social Workers	2	2	+0	+20.0%	-1	-0
Psychologists	3	3				
H&SC, Other	4	4			-0	-1
<b>Health &amp; Social Care Professionals</b>	<b>90</b>	<b>92</b>	<b>+2</b>	<b>+2.6%</b>	<b>+0</b>	<b>-3</b>
Management (VIII & above)	1	1				
Administrative/ Supervisory (V to VII)	5	5			+0	+0
Clerical (III & IV)	5	5	+0	+4.0%	+1	+0
<b>Management &amp; Administrative</b>	<b>11</b>	<b>11</b>	<b>+0</b>	<b>+1.8%</b>	<b>+1</b>	<b>+1</b>
Health Care Assistants	222	231	+9	+3.9%	+19	+19
Care, other	32	32	+1	+1.6%	-0	+0
<b>Patient &amp; Client Care</b>	<b>254</b>	<b>263</b>	<b>+9</b>	<b>+3.6%</b>	<b>+19</b>	<b>+20</b>

Nov 2020 (Dec 2019 figure: 520)	WTE Oct 2020	WTE Nov 2020	WTE change since Oct 20	% change since Oct 20	WTE change since Dec 19	WTE change since Nov 19
<b>Overall</b>	<b>578</b>	<b>580</b>	<b>+2</b>	<b>+0.3%</b>	<b>+60</b>	<b>+56</b>
Consultants	1	1	-0	-23.7%		
<b>Medical &amp; Dental</b>	<b>1</b>	<b>1</b>	<b>-0</b>	<b>-23.7%</b>		
Nurse/ Midwife Manager	28	26	-1	-4.7%	+1	+0
Nurse/ Midwife Specialist & AN/MP	4	4			-1	
Staff Nurse/ Staff Midwife	93	97	+4	+4.2%	+13	+13
<i>Pre-registration Nurse Intern (COVID-19)</i>	1		-1	-100.0%		
Nursing/ Midwifery Student	1		-1	-100.0%		
<b>Nursing &amp; Midwifery</b>	<b>126</b>	<b>127</b>	<b>+2</b>	<b>+1.3%</b>	<b>+13</b>	<b>+13</b>
Therapy Professions	14	15	+1	+7.6%	+3	+3
Social Care	101	102	+1	+0.8%	+17	+17
Social Workers	4	4			-1	-1
Psychologists	6	6			+0	+0
H&SC, Other	1	1			-0	+1
<b>Health &amp; Social Care Professionals</b>	<b>126</b>	<b>128</b>	<b>+2</b>	<b>+1.4%</b>	<b>+19</b>	<b>+19</b>
Management (VIII & above)	2	2				
Administrative/ Supervisory (V to VII)	6	6	-0	-0.8%	+0	+0
Clerical (III & IV)	10	12	+1	+13.0%	-1	-1
<b>Management &amp; Administrative</b>	<b>18</b>	<b>20</b>	<b>+1</b>	<b>+7.1%</b>	<b>-1</b>	<b>-1</b>
Support	8	7	-1	-11.6%	-0	-1
Maintenance/ Technical	2	2			-0	-0
<b>General Support</b>	<b>10</b>	<b>9</b>	<b>-1</b>	<b>-9.2%</b>	<b>-1</b>	<b>-1</b>
Health Care Assistants	203	199	-4	-2.2%	+20	+18
Care, other	94	97	+3	+2.9%	+9	+8
<b>Patient &amp; Client Care</b>	<b>297</b>	<b>296</b>	<b>-2</b>	<b>-0.6%</b>	<b>+29</b>	<b>+26</b>



Nov 2020 (Dec 2019 figure: 740)	WTE Oct 2020	WTE Nov 2020	WTE change since Oct 20	% change since Oct 20	WTE change since Dec 19	WTE change since Nov 19
<b>Overall</b>	<b>777</b>	<b>770</b>	<b>-7</b>	<b>-0.9%</b>	<b>+30</b>	<b>+28</b>
Nurse/ Midwife Manager	15	15	-0	-0.3%	-0	-1
Nurse/ Midwife Specialist & AN/MP	3	3				
Staff Nurse/ Staff Midwife	54	56	+2	+4.0%	-3	-4
<b>Nursing &amp; Midwifery</b>	<b>72</b>	<b>74</b>	<b>+2</b>	<b>+3.0%</b>	<b>-3</b>	<b>-5</b>
Therapy Professions	45	45	-0	-0.4%	-3	-4
Social Care	127	127	+1	+0.4%	+3	+2
Social Workers	17	17	+0	+0.3%	-0	-1
Psychologists	21	21	+0	+1.8%	+1	+1
<b>Health &amp; Social Care Professionals</b>	<b>209</b>	<b>210</b>	<b>+1</b>	<b>+0.4%</b>	<b>+1</b>	<b>-2</b>
Management (VIII & above)	8	7	-1	-12.8%	-1	-1
Administrative/ Supervisory (V to VII)	10	11	+1	+5.9%	+1	+1
Clerical (III & IV)	35	33	-1	-3.7%	+0	-1
<b>Management &amp; Administrative</b>	<b>53</b>	<b>51</b>	<b>-2</b>	<b>-3.2%</b>	<b>+1</b>	<b>-1</b>
Support	12	14	+1	+10.6%	-1	-0
Maintenance/ Technical	2	4	+2	+132.5%	+2	+2
<b>General Support</b>	<b>14</b>	<b>17</b>	<b>+3</b>	<b>+23.9%</b>	<b>+1</b>	<b>+2</b>
Health Care Assistants	228	222	-7	-2.9%	+15	+19
Care, other	201	197	-5	-2.3%	+15	+15
<b>Patient &amp; Client Care</b>	<b>430</b>	<b>418</b>	<b>-11</b>	<b>-2.6%</b>	<b>+30</b>	<b>+34</b>

Nov 2020 (Dec 2019 figure: 630)	WTE Oct 2020	WTE Nov 2020	WTE change since Oct 20	% change since Oct 20	WTE change since Dec 19	WTE change since Nov 19
<b>Overall</b>	<b>645</b>	<b>650</b>	<b>+6</b>	<b>+0.9%</b>	<b>+20</b>	<b>+26</b>
Consultants	1	1			-0	-0
<b>Medical &amp; Dental</b>	<b>1</b>	<b>1</b>			<b>-0</b>	<b>-0</b>
Nurse/ Midwife Manager	21	23	+1	+6.5%	-2	-2
Staff Nurse/ Staff Midwife	46	46	+1	+1.6%	-1	-2
<i>Pre-registration Nurse Intern (COVID-19)</i>	1		-1	-100.0%		
Nursing/ Midwifery Student	1		-1	-100.0%		
<b>Nursing &amp; Midwifery</b>	<b>68</b>	<b>69</b>	<b>+1</b>	<b>+1.6%</b>	<b>-3</b>	<b>-4</b>
Therapy Professions	2	1	-1	-33.3%	-2	-2
Social Care	72	71	-1	-1.6%	+4	+4
Social Workers	8	8	-0	-1.2%	-2	-2
Psychologists	4	4			-0	-1
H&SC, Other	4	4	+0	+0.3%	-0	-0
<b>Health &amp; Social Care Professionals</b>	<b>89</b>	<b>87</b>	<b>-2</b>	<b>-2.0%</b>	<b>+0</b>	<b>+0</b>
Management (VIII & above)	5	5	-0	-0.2%	+0	+0
Administrative/ Supervisory (V to VII)	16	16	-0	-0.4%	+3	+3
Clerical (III & IV)	25	27	+1	+4.4%	+1	+2
<b>Management &amp; Administrative</b>	<b>46</b>	<b>47</b>	<b>+1</b>	<b>+2.3%</b>	<b>+4</b>	<b>+5</b>
Support	1	1	+0	+7.2%	-0	+0
Maintenance/ Technical	3	3				-0
<b>General Support</b>	<b>4</b>	<b>4</b>	<b>+0</b>	<b>+2.3%</b>	<b>-0</b>	<b>+0</b>
Health Care Assistants	345	347	+2	+0.5%	+16	+17
Care, other	91	95	+3	+3.8%	+4	+8
<b>Patient &amp; Client Care</b>	<b>436</b>	<b>441</b>	<b>+5</b>	<b>+1.2%</b>	<b>+19</b>	<b>+25</b>

## Carriglea Cairde Services

Nov 2020 (Dec 2019 figure: 214)	WTE Oct 2020	WTE Nov 2020	WTE change since Oct 20	% change since Oct 20	WTE change since Dec 19	WTE change since Nov 19
<b>Overall</b>	<b>208</b>	<b>208</b>	<b>+0</b>	<b>+0.1%</b>	<b>-6</b>	<b>-5</b>
Nurse/ Midwife Manager	13	13	-0	-0.2%	+1	+0
Staff Nurse/ Staff Midwife	25	25	-1	-2.8%	-2	-0
<i>Post-registration Nurse/ Midwife Student</i>	2	2	+0	+1.6%	+2	+2
Nursing/ Midwifery Student	2	2	+0	+1.6%	+2	+2
<b>Nursing &amp; Midwifery</b>	<b>40</b>	<b>39</b>	<b>-1</b>	<b>-1.8%</b>	<b>+1</b>	<b>+2</b>
Social Care	31	31	+0	+0.1%	-6	-6
<b>Health &amp; Social Care Professionals</b>	<b>31</b>	<b>31</b>	<b>+0</b>	<b>+0.1%</b>	<b>-6</b>	<b>-6</b>
Management (VIII & above)	2	2				
Administrative/ Supervisory (V to VII)	3	3	+0	+0.3%	+0	+0
Clerical (III & IV)	6	6	+0	+0.5%	-0	-0
<b>Management &amp; Administrative</b>	<b>11</b>	<b>11</b>	<b>+0</b>	<b>+0.4%</b>	<b>-0</b>	<b>-0</b>
Support	6	6			+2	+2
Maintenance/ Technical	1	1				
<b>General Support</b>	<b>8</b>	<b>8</b>			<b>+2</b>	<b>+2</b>
Health Care Assistants	75	75	+1	+1.3%	+2	+2
Care, other	44	44	-0	-0.1%	-4	-4
<b>Patient &amp; Client Care</b>	<b>119</b>	<b>120</b>	<b>+1</b>	<b>+0.8%</b>	<b>-3</b>	<b>-2</b>

## Central Remedial Clinic

Nov 2020 (Dec 2019 figure: 278)	WTE Oct 2020	WTE Nov 2020	WTE change since Oct 20	% change since Oct 20	WTE change since Dec 19	WTE change since Nov 19
<b>Overall</b>	<b>295</b>	<b>297</b>	<b>+2</b>	<b>+0.6%</b>	<b>+18</b>	<b>+21</b>
Consultants	1	1				
Medical/ Dental, other	0	0				
<b>Medical &amp; Dental</b>	<b>2</b>	<b>2</b>				
Nurse/ Midwife Manager	2	2				
Nurse/ Midwife Specialist & AN/MP	2	2			+1	
Staff Nurse/ Staff Midwife	4	4			+1	+2
Nursing/ Midwifery other	1	1			+1	+1
<b>Nursing &amp; Midwifery</b>	<b>9</b>	<b>9</b>			<b>+3</b>	<b>+3</b>
Therapy Professions	80	80	+1	+0.6%	+3	+4
Health Science/ Diagnostics	13	14	+1	+7.7%	-1	-1
Social Workers	9	9			+1	+1
Psychologists	13	13			+2	+2
<b>Health &amp; Social Care Professionals</b>	<b>114</b>	<b>116</b>	<b>+2</b>	<b>+1.3%</b>	<b>+4</b>	<b>+5</b>
Management (VIII & above)	6	6			-1	-1
Administrative/ Supervisory (V to VII)	15	15				
Clerical (III & IV)	33	34	+1	+3.0%	+2	+3
<b>Management &amp; Administrative</b>	<b>55</b>	<b>56</b>	<b>+1</b>	<b>+1.8%</b>	<b>+1</b>	<b>+2</b>
Support	14	12	-2	-14.0%	-2	-2
Maintenance/ Technical	1	2	+1	+100.0%	+1	+1
<b>General Support</b>	<b>15</b>	<b>14</b>	<b>-1</b>	<b>-6.5%</b>	<b>-1</b>	<b>-1</b>
Health Care Assistants	57	58	+1	+1.6%	+7	+7
Care, other	43	42	-1	-1.3%	+4	+4
<b>Patient &amp; Client Care</b>	<b>100</b>	<b>101</b>	<b>+0</b>	<b>+0.4%</b>	<b>+11</b>	<b>+11</b>

Nov 2020 (Dec 2019 figure: 396)	WTE Oct 2020	WTE Nov 2020	WTE change since Oct 20	% change since Oct 20	WTE change since Dec 19	WTE change since Nov 19
<b>Overall</b>	<b>389</b>	<b>390</b>	<b>+1</b>	<b>+0.2%</b>	<b>-7</b>	<b>-8</b>
Consultants	0	0				
Medical/ Dental, other	1	1				
<b>Medical &amp; Dental</b>	<b>1</b>	<b>1</b>				
Nurse/ Midwife Manager	27	27			+1	-1
Nurse/ Midwife Specialist & AN/MP	2	2				
Staff Nurse/ Staff Midwife	102	103	+1	+1.4%	-4	-4
<b>Nursing &amp; Midwifery</b>	<b>130</b>	<b>131</b>	<b>+1</b>	<b>+1.1%</b>	<b>-3</b>	<b>-5</b>
Therapy Professions	12	11	-1	-8.1%	-2	-2
Social Care	34	34			-1	-1
Social Workers	5	5			-1	-1
Psychologists	5	5			+1	+1
Pharmacy	0	0			-0	-0
H&SC, Other	2	2				
<b>Health &amp; Social Care Professionals</b>	<b>58</b>	<b>57</b>	<b>-1</b>	<b>-1.7%</b>	<b>-3</b>	<b>-3</b>
Management (VIII & above)	2	3	+1	+50.0%	+1	+1
Administrative/ Supervisory (V to VII)	15	15	-1	-3.3%	+0	+0
Clerical (III & IV)	12	12			+1	+1
<b>Management &amp; Administrative</b>	<b>30</b>	<b>30</b>	<b>+1</b>	<b>+1.7%</b>	<b>+2</b>	<b>+2</b>
Support	27	27			-0	
Maintenance/ Technical	4	4				
<b>General Support</b>	<b>30</b>	<b>30</b>				
Health Care Assistants	129	129	-0	-0.1%	-1	-1
Care, other	11	11			-1	-1
<b>Patient &amp; Client Care</b>	<b>140</b>	<b>139</b>	<b>-0</b>	<b>-0.1%</b>	<b>-3</b>	<b>-2</b>

## Children's Sunshine Home

Nov 2020 (Dec 2019 figure: 58)	WTE Oct 2020	WTE Nov 2020	WTE change since Oct 20	% change since Oct 20	WTE change since Dec 19	WTE change since Nov 19
<b>Overall</b>	<b>56</b>	<b>57</b>	<b>+1</b>	<b>+1.8%</b>	<b>-2</b>	<b>-1</b>
Nurse/ Midwife Manager	8	8			+1	+1
Staff Nurse/ Staff Midwife	17	18	+1	+5.8%	-3	-2
<b>Nursing &amp; Midwifery</b>	<b>25</b>	<b>26</b>	<b>+1</b>	<b>+4.0%</b>	<b>-2</b>	<b>-1</b>
Therapy Professions	1	1			-1	-1
Social Workers	1	1				
<b>Health &amp; Social Care Professionals</b>	<b>2</b>	<b>2</b>			<b>-1</b>	<b>-1</b>
Management (VIII & above)	3	3				
Administrative/ Supervisory (V to VII)	4	4				
<i>General Administrative (III &amp; IV)</i>	1	1			+1	
Clerical (III & IV)	1	1				
<b>Management &amp; Administrative</b>	<b>8</b>	<b>8</b>				
Support	3	3				
<b>General Support</b>	<b>3</b>	<b>3</b>				
Health Care Assistants	13	13			-1	-1
Care, other	5	5			+1	+1
<b>Patient &amp; Client Care</b>	<b>18</b>	<b>18</b>			<b>+1</b>	<b>+1</b>

Nov 2020 (Dec 2019 figure: 1,091)	WTE Oct 2020	WTE Nov 2020	WTE change since Oct 20	% change since Oct 20	WTE change since Dec 19	WTE change since Nov 19
<b>Overall</b>	<b>1,150</b>	<b>1,146</b>	<b>-3</b>	<b>-0.3%</b>	<b>+56</b>	<b>+54</b>
Nurse/ Midwife Manager	42	42			+1	+1
Nurse/ Midwife Specialist & AN/MP	11	11			+1	+1
Staff Nurse/ Staff Midwife	163	163			-6	-6
Pre-registration Nurse/ Midwife Intern				-100.0%	-8	-6
Pre-registration Nurse Intern (COVID-19)	17	17			+17	+17
Nursing/ Midwifery Student	17	17			+11	+11
Nursing/ Midwifery other				-100.0%	-1	-1
<b>Nursing &amp; Midwifery</b>	<b>233</b>	<b>233</b>	<b>+0</b>	<b>+0.0%</b>	<b>+7</b>	<b>+7</b>
Therapy Professions	37	37			-1	-1
Social Care	43	43			+11	+11
Social Workers	9	9				
Psychologists	11	11			+1	+1
H&SC, Other	3	3				
<b>Health &amp; Social Care Professionals</b>	<b>102</b>	<b>102</b>			<b>+12</b>	<b>+12</b>
Management (VIII & above)	7	7			+1	+1
Administrative/ Supervisory (V to VII)	23	23			+4	+4
Clerical (III & IV)	28	28			+5	+5
<b>Management &amp; Administrative</b>	<b>58</b>	<b>58</b>			<b>+9</b>	<b>+9</b>
Support	83	83			+6	+6
Maintenance/ Technical	7	7			+1	+1
<b>General Support</b>	<b>90</b>	<b>90</b>			<b>+7</b>	<b>+7</b>
Health Care Assistants	589	585	-3	-0.5%	+22	+21
Care, other	79	79			-1	-1
<b>Patient &amp; Client Care</b>	<b>667</b>	<b>664</b>	<b>-3</b>	<b>-0.5%</b>	<b>+21</b>	<b>+20</b>

Nov 2020 (Dec 2019 figure: 1,034)	WTE Oct 2020	WTE Nov 2020	WTE change since Oct 20	% change since Oct 20	WTE change since Dec 19	WTE change since Nov 19
<b>Overall</b>	<b>1,051</b>	<b>1,064</b>	<b>+13</b>	<b>+1.3%</b>	<b>+30</b>	<b>+45</b>
Consultants	2	2			+1	+1
Medical/ Dental, other	2	2				
<b>Medical &amp; Dental</b>	<b>4</b>	<b>4</b>			<b>+1</b>	<b>+1</b>
Nurse/ Midwife Manager	60	61	+1	+1.5%	-1	+1
Nurse/ Midwife Specialist & AN/MP	9	10	+1	+10.8%	+2	+2
Staff Nurse/ Staff Midwife	190	190	+1	+0.3%	+4	+3
<i>Pre-registration Nurse/ Midwife Intern</i>				-100.0%	-8	
Nursing/ Midwifery Student				-100.0%	-8	
Nursing/ Midwifery other	4	4				
<b>Nursing &amp; Midwifery</b>	<b>263</b>	<b>266</b>	<b>+3</b>	<b>+1.0%</b>	<b>-2</b>	<b>+6</b>
Therapy Professions	31	32	+1	+3.2%	-1	-1
Social Care	171	178	+7	+4.0%	+15	+20
Social Workers	13	13			+3	+3
Psychologists	11	11			+4	+4
Pharmacy	2	2				
H&SC, Other	5	5			+1	+1
<b>Health &amp; Social Care Professionals</b>	<b>233</b>	<b>241</b>	<b>+8</b>	<b>+3.4%</b>	<b>+21</b>	<b>+27</b>
Management (VIII & above)	9	9			+3	+2
Administrative/ Supervisory (V to VII)	27	27	+0	+0.4%	+2	+1
Clerical (III & IV)	31	31			-2	-1
<b>Management &amp; Administrative</b>	<b>67</b>	<b>67</b>	<b>+0</b>	<b>+0.2%</b>	<b>+3</b>	<b>+2</b>
Support	77	77	-0	-0.2%	-2	-1
Maintenance/ Technical	8	8				
<b>General Support</b>	<b>85</b>	<b>85</b>	<b>-0</b>	<b>-0.2%</b>	<b>-2</b>	<b>-1</b>
Health Care Assistants	366	371	+5	+1.4%	+9	+13
Care, other	33	31	-2	-6.9%	-1	-1
<b>Patient &amp; Client Care</b>	<b>399</b>	<b>401</b>	<b>+3</b>	<b>+0.7%</b>	<b>+8</b>	<b>+12</b>



Nov 2020 (Dec 2019 figure: 543)	WTE Oct 2020	WTE Nov 2020	WTE change since Oct 20	% change since Oct 20	WTE change since Dec 19	WTE change since Nov 19
<b>Overall</b>	<b>543</b>	<b>548</b>	<b>+5</b>	<b>+0.9%</b>	<b>+5</b>	<b>+12</b>
Medical/ Dental, other	1	1				
<b>Medical &amp; Dental</b>	<b>1</b>	<b>1</b>				
Nurse/ Midwife Manager	34	32	-2	-5.8%	-3	-1
Nurse/ Midwife Specialist & AN/MP	7	7			-1	-1
Staff Nurse/ Staff Midwife	145	153	+8	+5.2%	+9	+7
Pre-registration Nurse/ Midwife Intern				-100.0%	-7	
Pre-registration Nurse Intern (COVID-19)	1	1			+1	+1
Nursing/ Midwifery Student	1	1			-11	+1
Nursing/ Midwifery other	3	3				
<b>Nursing &amp; Midwifery</b>	<b>190</b>	<b>196</b>	<b>+6</b>	<b>+2.9%</b>	<b>-5</b>	<b>+7</b>
Therapy Professions	15	16	+1	+6.7%	+1	+1
Social Care	59	63	+4	+6.8%	+10	+8
Social Workers	5	5			+0	+0
Psychologists	7	7			+4	+4
H&SC, Other	6	6				
<b>Health &amp; Social Care Professionals</b>	<b>92</b>	<b>97</b>	<b>+5</b>	<b>+5.4%</b>	<b>+15</b>	<b>+13</b>
Management (VIII & above)	2	2				
Administrative/ Supervisory (V to VII)	11	11			+1	+1
Clerical (III & IV)	14	14			-1	-1
<b>Management &amp; Administrative</b>	<b>27</b>	<b>27</b>				
Support	43	43	-1	-1.4%	+2	+2
Maintenance/ Technical	4	4				
<b>General Support</b>	<b>48</b>	<b>47</b>	<b>-1</b>	<b>-1.3%</b>	<b>+2</b>	<b>+2</b>
Health Care Assistants	162	157	-5	-3.4%	-9	-11
Care, other	23	23	+1	+2.2%	+2	+2
<b>Patient &amp; Client Care</b>	<b>185</b>	<b>180</b>	<b>-5</b>	<b>-2.7%</b>	<b>-7</b>	<b>-10</b>

## Daughters of Charity, Roscrea

Nov 2020 (Dec 2019 figure: 290)	WTE Oct 2020	WTE Nov 2020	WTE change since Oct 20	% change since Oct 20	WTE change since Dec 19	WTE change since Nov 19
<b>Overall</b>	<b>287</b>	<b>290</b>	<b>+2</b>	<b>+0.8%</b>	<b>-0</b>	<b>+1</b>
Nurse/ Midwife Manager	15	15			-1	-1
Staff Nurse/ Staff Midwife	19	19	-0	-0.9%	+0	+0
Nursing/ Midwifery other	1	1				
<b>Nursing &amp; Midwifery</b>	<b>34</b>	<b>34</b>	<b>-0</b>	<b>-0.5%</b>	<b>-1</b>	<b>-1</b>
Therapy Professions	2	2			+0	+0
Social Care	25	25	+0	+0.8%	+6	+6
Social Workers	1	1				
Psychologists	1	1				
<b>Health &amp; Social Care Professionals</b>	<b>29</b>	<b>29</b>	<b>+0</b>	<b>+0.7%</b>	<b>+7</b>	<b>+7</b>
Management (VIII & above)	1	1				
Administrative/ Supervisory (V to VII)	7	8	+1	+14.5%	+1	+1
Clerical (III & IV)	7	6	-1	-10.9%	-1	-1
<b>Management &amp; Administrative</b>	<b>15</b>	<b>15</b>	<b>+0</b>	<b>+1.6%</b>	<b>+0</b>	<b>+0</b>
Support	4	4				
Maintenance/ Technical	5	5			-1	-1
<b>General Support</b>	<b>9</b>	<b>9</b>			<b>-1</b>	<b>-1</b>
Health Care Assistants	199	201	+2	+1.0%	-2	+0
Care, other	2	2			-4	-4
<b>Patient &amp; Client Care</b>	<b>200</b>	<b>202</b>	<b>+2</b>	<b>+1.0%</b>	<b>-5</b>	<b>-4</b>

## Kare, Newbridge, Co Kildare

Nov 2020 (Dec 2019 figure: 360)	WTE Oct 2020	WTE Nov 2020	WTE change since Oct 20	% change since Oct 20	WTE change since Dec 19	WTE change since Nov 19
<b>Overall</b>	<b>362</b>	<b>372</b>	<b>+10</b>	<b>+2.8%</b>	<b>+13</b>	<b>+18</b>
Nurse/ Midwife Manager	7	7			-5	-4
Staff Nurse/ Staff Midwife	24	24	+0	+0.2%	+2	+2
<b>Nursing &amp; Midwifery</b>	<b>32</b>	<b>32</b>	<b>+0</b>	<b>+0.2%</b>	<b>-3</b>	<b>-2</b>
Therapy Professions	12	13	+1	+4.4%	-2	-1
Social Care	64	65	+0	+0.5%	+4	+5
Social Workers	4	4				
Psychologists	7	7	+0	+6.3%	+3	+4
<b>Health &amp; Social Care Professionals</b>	<b>87</b>	<b>89</b>	<b>+1</b>	<b>+1.5%</b>	<b>+5</b>	<b>+8</b>
Management (VIII & above)	6	6	+0	+5.4%		
Administrative/ Supervisory (V to VII)	13	13	-0	-0.1%	+1	+1
Clerical (III & IV)	14	14			+2	+2
<b>Management &amp; Administrative</b>	<b>32</b>	<b>33</b>	<b>+0</b>	<b>+0.9%</b>	<b>+3</b>	<b>+3</b>
Support	1	1			-0	-0
<b>General Support</b>	<b>1</b>	<b>1</b>			<b>-0</b>	<b>-0</b>
Health Care Assistants	102	107	+5	+4.5%	+6	+6
Care, other	107	111	+4	+3.8%	+2	+4
<b>Patient &amp; Client Care</b>	<b>209</b>	<b>218</b>	<b>+9</b>	<b>+4.1%</b>	<b>+8</b>	<b>+10</b>

Nov 2020 (Dec 2019 figure: 302)	WTE Oct 2020	WTE Nov 2020	WTE change since Oct 20	% change since Oct 20	WTE change since Dec 19	WTE change since Nov 19
<b>Overall</b>	<b>314</b>	<b>313</b>	<b>-1</b>	<b>-0.2%</b>	<b>+11</b>	<b>+10</b>
Nurse/ Midwife Manager	15	16	+1	+3.4%	+0	+0
Staff Nurse/ Staff Midwife	30	30	-0	-0.9%	+4	+3
<i>Pre-registration Nurse Intern (COVID-19)</i>	1	1	-0	-4.4%	+1	+1
Nursing/ Midwifery Student	1	1	-0	-4.4%	+1	+1
<b>Nursing &amp; Midwifery</b>	<b>46</b>	<b>46</b>	<b>+0</b>	<b>+0.5%</b>	<b>+5</b>	<b>+4</b>
Social Care	102	102	+1	+0.7%	+7	+8
Social Workers	4	3	-0	-11.1%	-1	-0
Psychologists	1	1				
H&SC, Other	1	1				
<b>Health &amp; Social Care Professionals</b>	<b>107</b>	<b>107</b>	<b>+0</b>	<b>+0.3%</b>	<b>+7</b>	<b>+7</b>
Management (VIII & above)	2	3	+1	+25.0%	+2	+2
Administrative/ Supervisory (V to VII)	6	5	-1	-16.8%	+0	+0
Clerical (III & IV)	12	11	-0	-1.7%	+0	-0
<b>Management &amp; Administrative</b>	<b>20</b>	<b>19</b>	<b>-1</b>	<b>-3.6%</b>	<b>+2</b>	<b>+2</b>
Support	1	1	-0	-0.8%	+0	+0
Maintenance/ Technical	2	2				
<b>General Support</b>	<b>3</b>	<b>3</b>	<b>-0</b>	<b>-0.3%</b>	<b>+0</b>	<b>+0</b>
Health Care Assistants	110	109	-1	-0.7%	-0	-1
Care, other	28	28	+0	+1.1%	-2	-2
<b>Patient &amp; Client Care</b>	<b>137</b>	<b>137</b>	<b>-1</b>	<b>-0.4%</b>	<b>-2</b>	<b>-3</b>

Nov 2020 (Dec 2019 figure: 270)	WTE Oct 2020	WTE Nov 2020	WTE change since Oct 20	% change since Oct 20	WTE change since Dec 19	WTE change since Nov 19
<b>Overall</b>	<b>280</b>	<b>281</b>	<b>+1</b>	<b>+0.5%</b>	<b>+11</b>	<b>+10</b>
Nurse/ Midwife Manager	9	10	+0	+1.1%	+0	-0
Staff Nurse/ Staff Midwife	5	5	+0	+6.7%	-0	-0
<b>Nursing &amp; Midwifery</b>	<b>14</b>	<b>14</b>	<b>+0</b>	<b>+2.9%</b>	<b>-0</b>	<b>-0</b>
Therapy Professions	3	3				
Social Care	98	100	+1	+1.4%	+6	+8
Social Workers	4	4			+1	+1
Psychologists	2	2	-0	-1.1%	-0	-0
H&SC, Other	3	3	+0	+5.1%	+0	-0
<b>Health &amp; Social Care Professionals</b>	<b>110</b>	<b>111</b>	<b>+1</b>	<b>+1.3%</b>	<b>+6</b>	<b>+8</b>
Administrative/ Supervisory (V to VII)	5	4	-1	-10.5%	+0	+0
Clerical (III & IV)	10	10	+0	+0.5%	-0	-0
<b>Management &amp; Administrative</b>	<b>15</b>	<b>14</b>	<b>-0</b>	<b>-3.0%</b>	<b>+0</b>	<b>+0</b>
Support	1	1				
Maintenance/ Technical	3	3				
<b>General Support</b>	<b>4</b>	<b>4</b>				
Health Care Assistants	121	121	+0	+0.0%	+6	+3
Care, other	17	17	-0	-0.1%	-1	-1
<b>Patient &amp; Client Care</b>	<b>137</b>	<b>137</b>	<b>+0</b>	<b>+0.0%</b>	<b>+5</b>	<b>+2</b>

Nov 2020 (Dec 2019 figure: 334)	WTE Oct 2020	WTE Nov 2020	WTE change since Oct 20	% change since Oct 20	WTE change since Dec 19	WTE change since Nov 19
<b>Overall</b>	<b>335</b>	<b>342</b>	<b>+6</b>	<b>+1.9%</b>	<b>+8</b>	<b>+10</b>
Nurse/ Midwife Manager	13	13	-0	-2.4%	-5	-5
Nurse/ Midwife Specialist & AN/MP	2	2			+0	+0
Staff Nurse/ Staff Midwife	22	23	+1	+6.6%	-0	-2
Nursing/ Midwifery other	5	6	+0	+7.9%	+0	+0
<b>Nursing &amp; Midwifery</b>	<b>42</b>	<b>43</b>	<b>+2</b>	<b>+3.7%</b>	<b>-5</b>	<b>-7</b>
Therapy Professions	9	9	+0	+0.1%	+1	+1
Social Care	94	94	+0	+0.1%	+5	+5
Social Workers	2	3	+0	+5.8%	+0	-0
Psychologists	2	2	+0	+1.2%		
H&SC, Other	3	3				
<b>Health &amp; Social Care Professionals</b>	<b>110</b>	<b>110</b>	<b>+0</b>	<b>+0.2%</b>	<b>+6</b>	<b>+6</b>
Management (VIII & above)	5	5	-1	-10.0%	+2	+2
Administrative/ Supervisory (V to VII)	12	13	+1	+8.2%	-1	-1
Clerical (III & IV)	13	13	-0	-0.2%	-1	-1
<b>Management &amp; Administrative</b>	<b>29</b>	<b>30</b>	<b>+0</b>	<b>+1.4%</b>	<b>-0</b>	<b>-1</b>
Support	14	14	+0	+1.1%	-2	-2
Maintenance/ Technical	5	4	-1	-20.0%	-1	-1
<b>General Support</b>	<b>19</b>	<b>18</b>	<b>-1</b>	<b>-4.5%</b>	<b>-3</b>	<b>-3</b>
Health Care Assistants	128	132	+4	+3.0%	+9	+13
Care, other	8	9	+1	+13.7%	+1	+1
<b>Patient &amp; Client Care</b>	<b>136</b>	<b>141</b>	<b>+5</b>	<b>+3.6%</b>	<b>+10</b>	<b>+14</b>

# Peamount Hospital (Newcastle)

Nov 2020 (Dec 2019 figure: 486)	WTE Oct 2020	WTE Nov 2020	WTE change since Oct 20	% change since Oct 20	WTE change since Dec 19	WTE change since Nov 19
<b>Overall</b>	<b>476</b>	<b>477</b>	<b>+1</b>	<b>+0.1%</b>	<b>-9</b>	<b>-9</b>
Registrars	1	2	+0	+32.2%	-0	+0
SHO/ Interns	7	7	-0	-5.2%	-0	-0
<b>Medical &amp; Dental</b>	<b>9</b>	<b>9</b>	<b>+0</b>	<b>+1.1%</b>	<b>-0</b>	<b>+0</b>
Nurse/ Midwife Manager	27	27	-0	-0.0%	+1	+0
Nurse/ Midwife Specialist & AN/MP	2	2				
Staff Nurse/ Staff Midwife	75	77	+2	+2.2%	-5	-5
<i>Nursing Education/Clinical</i>	1	1			+1	+1
Nursing/ Midwifery other	1	1			+1	+1
<b>Nursing &amp; Midwifery</b>	<b>105</b>	<b>107</b>	<b>+2</b>	<b>+1.5%</b>	<b>-3</b>	<b>-4</b>
Therapy Professions	27	27	-0	-0.9%	-2	-3
Health Science/ Diagnostics	3	3				
Social Care	4	4	-0	-2.0%	+2	+2
Social Workers	5	5				+0
Pharmacy	4	4	-1	-21.3%	-1	-1
<b>Health &amp; Social Care Professionals</b>	<b>44</b>	<b>42</b>	<b>-1</b>	<b>-2.9%</b>	<b>-1</b>	<b>-1</b>
Management (VIII & above)	4	4				
Administrative/ Supervisory (V to VII)	18	17	-1	-4.8%	+3	+2
Clerical (III & IV)	17	19	+2	+12.6%	-1	-0
<b>Management &amp; Administrative</b>	<b>39</b>	<b>40</b>	<b>+1</b>	<b>+3.4%</b>	<b>+2</b>	<b>+2</b>
Support	42	44	+2	+4.1%	-3	-4
Maintenance/ Technical	8	8	-0	-3.0%	+1	-0
<b>General Support</b>	<b>50</b>	<b>52</b>	<b>+1</b>	<b>+2.9%</b>	<b>-3</b>	<b>-5</b>
Health Care Assistants	226	224	-2	-1.0%	-4	-1
Care, other	4	3	-0	-12.8%	-0	+0
<b>Patient &amp; Client Care</b>	<b>230</b>	<b>227</b>	<b>-3</b>	<b>-1.2%</b>	<b>-4</b>	<b>-1</b>

# Stewart's Hospital, (Palmerstown)

Nov 2020 (Dec 2019 figure: 852)	WTE Oct 2020	WTE Nov 2020	WTE change since Oct 20	% change since Oct 20	WTE change since Dec 19	WTE change since Nov 19
<b>Overall</b>	<b>892</b>	<b>913</b>	<b>+20</b>	<b>+2.3%</b>	<b>+61</b>	<b>+57</b>
Consultants	0	0				
Registrars				-100.0%		
<b>Medical &amp; Dental</b>	<b>0</b>	<b>0</b>				
Nurse/ Midwife Manager	31	30	-1	-3.3%	-6	-6
Staff Nurse/ Staff Midwife	82	83	+1	+0.6%	+10	+10
Nursing/ Midwifery other	1	1				
<b>Nursing &amp; Midwifery</b>	<b>113</b>	<b>113</b>	<b>-1</b>	<b>-0.4%</b>	<b>+4</b>	<b>+4</b>
Therapy Professions	13	18	+5	+38.3%	+2	+2
Social Care	13	13			+3	+3
Social Workers	6	6			+1	+1
Psychologists	4	4			-1	-1
<b>Health &amp; Social Care Professionals</b>	<b>36</b>	<b>41</b>	<b>+5</b>	<b>+14.0%</b>	<b>+5</b>	<b>+5</b>
Management (VIII & above)	13	16	+3	+23.1%	+5	+4
Administrative/ Supervisory (V to VII)	15	16	+1	+5.7%	+2	-0
Clerical (III & IV)	22	24	+2	+8.9%	+1	+2
<b>Management &amp; Administrative</b>	<b>50</b>	<b>56</b>	<b>+6</b>	<b>+11.6%</b>	<b>+8</b>	<b>+5</b>
Support	54	55	+1	+1.0%	-2	-2
Maintenance/ Technical	6	6			+1	+1
<b>General Support</b>	<b>60</b>	<b>61</b>	<b>+1</b>	<b>+0.9%</b>	<b>-1</b>	<b>-1</b>
Health Care Assistants	516	521	+5	+1.1%	+40	+40
Care, other	117	120	+4	+3.3%	+5	+3
<b>Patient &amp; Client Care</b>	<b>633</b>	<b>642</b>	<b>+9</b>	<b>+1.5%</b>	<b>+45</b>	<b>+43</b>

Nov 2020 (Dec 2019 figure: 647)	WTE Oct 2020	WTE Nov 2020	WTE change since Oct 20	% change since Oct 20	WTE change since Dec 19	WTE change since Nov 19
<b>Overall</b>	<b>636</b>	<b>647</b>	<b>+11</b>	<b>+1.8%</b>	<b>+0</b>	<b>+15</b>
Registrars	1	1				
<b>Medical &amp; Dental</b>	<b>1</b>	<b>1</b>				
Nurse/ Midwife Manager	27	46	+19	+68.5%	+3	+4
Nurse/ Midwife Specialist & AN/MP	1	4	+3	+385.7%	-0	-0
Staff Nurse/ Staff Midwife	152	153	+1	+0.9%	+1	+12
<i>Pre-registration Nurse/ Midwife Intern</i>	1		-1	-100.0%	-1	
<i>Pre-registration Nurse Intern (COVID-19)</i>		4	+4	-100.0%	+4	+4
Nursing/ Midwifery Student	1	4	+3	+300.0%	+4	+4
<i>Nursing Education/Clinical</i>	22		-22	-100.0%		
Nursing/ Midwifery other	22		-22	-100.0%		
<b>Nursing &amp; Midwifery</b>	<b>203</b>	<b>207</b>	<b>+5</b>	<b>+2.3%</b>	<b>+7</b>	<b>+19</b>
Therapy Professions	3	3				
Social Care	75	76	+1	+1.2%	-2	-1
Social Workers	2	2			-0	+0
Psychologists	1	1				
<b>Health &amp; Social Care Professionals</b>	<b>81</b>	<b>82</b>	<b>+1</b>	<b>+1.2%</b>	<b>-2</b>	<b>-1</b>
Management (VIII & above)	1	1			-0	-0
Administrative/ Supervisory (V to VII)	6	6			-0	
Clerical (III & IV)	12	12	+0	+1.8%	+0	+1
<b>Management &amp; Administrative</b>	<b>18</b>	<b>18</b>	<b>+0</b>	<b>+1.2%</b>	<b>+0</b>	<b>+1</b>
Support	20	21	+2	+8.0%	-2	-1
Maintenance/ Technical	3	3			-0	-0
<b>General Support</b>	<b>23</b>	<b>24</b>	<b>+2</b>	<b>+7.0%</b>	<b>-2</b>	<b>-1</b>
Health Care Assistants	279	281	+2	+0.9%	+0	-1
Care, other	32	33	+1	+4.3%	-3	-3
<b>Patient &amp; Client Care</b>	<b>311</b>	<b>314</b>	<b>+4</b>	<b>+1.2%</b>	<b>-3</b>	<b>-4</b>



## St. John of God (IDS)

Nov 2020 (Dec 2019 figure: 456)	WTE Oct 2020	WTE Nov 2020	WTE change since Oct 20	% change since Oct 20	WTE change since Dec 19	WTE change since Nov 19
<b>Overall</b>	<b>462</b>	<b>467</b>	<b>+4</b>	<b>+0.9%</b>	<b>+10</b>	<b>+21</b>
<b>Medical &amp; Dental</b>	<b>1</b>	<b>1</b>				
Nurse/ Midwife Manager	8	8			+0	+0
Staff Nurse/ Staff Midwife	49	48	-0	-0.6%	+2	+3
<b>Nursing &amp; Midwifery</b>	<b>57</b>	<b>56</b>	<b>-0</b>	<b>-0.5%</b>	<b>+2</b>	<b>+3</b>
Therapy Professions	12	12	-0	-0.0%	-0	-0
Social Care	154	156	+3	+1.7%	+10	+12
Social Workers	3	3			-1	
Psychologists	6	6	+0	+1.0%	+1	+0
<b>Health &amp; Social Care Professionals</b>	<b>175</b>	<b>178</b>	<b>+3</b>	<b>+1.5%</b>	<b>+10</b>	<b>+12</b>
Management (VIII & above)	15	15	+0	+0.1%		+0
Administrative/ Supervisory (V to VII)	27	27	+0	+0.6%	-1	-0
Clerical (III & IV)	19	19	+0	+0.5%	-0	+0
<b>Management &amp; Administrative</b>	<b>60</b>	<b>60</b>	<b>+0</b>	<b>+0.5%</b>	<b>-2</b>	<b>+0</b>
Support	12	12	-0	-0.4%	+0	-1
Maintenance/ Technical	5	5			+0	+1
<b>General Support</b>	<b>17</b>	<b>17</b>	<b>-0</b>	<b>-0.3%</b>	<b>+0</b>	<b>+0</b>
Health Care Assistants	18	17	-1	-4.4%	-2	-2
Care, other	135	137	+3	+1.9%	+1	+7
<b>Patient &amp; Client Care</b>	<b>152</b>	<b>154</b>	<b>+2</b>	<b>+1.1%</b>	<b>-1</b>	<b>+5</b>

## St. John of God, Kerry

Nov 2020 (Dec 2019 figure: 315)	WTE Oct 2020	WTE Nov 2020	WTE change since Oct 20	% change since Oct 20	WTE change since Dec 19	WTE change since Nov 19
<b>Overall</b>	<b>319</b>	<b>323</b>	<b>+5</b>	<b>+1.4%</b>	<b>+8</b>	<b>+12</b>
Nurse/ Midwife Manager	15	15	+0	+1.7%	-0	-0
Staff Nurse/ Staff Midwife	46	49	+3	+5.7%	-0	+0
<b>Nursing &amp; Midwifery</b>	<b>61</b>	<b>64</b>	<b>+3</b>	<b>+4.7%</b>	<b>-1</b>	<b>+0</b>
Therapy Professions	4	4	+0	+1.1%	+0	+0
Social Care	47	47	-0	-0.2%	+1	+1
Social Workers	1	1				
Psychologists	1	1			-1	-1
<b>Health &amp; Social Care Professionals</b>	<b>52</b>	<b>52</b>	<b>-0</b>	<b>-0.1%</b>	<b>+0</b>	<b>-0</b>
Management (VIII & above)	1	1				
Administrative/ Supervisory (V to VII)	7	7	+0	+0.3%	-0	-0
Clerical (III & IV)	9	9	+0	+0.1%	-1	-0
<b>Management &amp; Administrative</b>	<b>17</b>	<b>17</b>	<b>+0</b>	<b>+0.2%</b>	<b>-1</b>	<b>-1</b>
<b>General Support</b>	<b>30</b>	<b>31</b>	<b>+0</b>	<b>+1.0%</b>	<b>+1</b>	<b>+1</b>
Health Care Assistants	114	115	+0	+0.4%	+9	+10
Care, other	44	45	+1	+2.2%	-1	+2
<b>Patient &amp; Client Care</b>	<b>158</b>	<b>160</b>	<b>+1</b>	<b>+0.9%</b>	<b>+8</b>	<b>+11</b>

# St. John of God Liffey Services

Nov 2020 (Dec 2019 figure: 787)	WTE Oct 2020	WTE Nov 2020	WTE change since Oct 20	% change since Oct 20	WTE change since Dec 19	WTE change since Nov 19
<b>Overall</b>	<b>779</b>	<b>794</b>	<b>+16</b>	<b>+2.0%</b>	<b>+7</b>	<b>+30</b>
Registrars	1	1				
<b>Medical &amp; Dental</b>	<b>1</b>	<b>1</b>				
Nurse/ Midwife Manager	23	22	-0	-1.1%	+3	+2
Nurse/ Midwife Specialist & AN/MP	1	1				
Staff Nurse/ Staff Midwife	90	91	+1	+1.3%	+1	+6
<b>Nursing &amp; Midwifery</b>	<b>113</b>	<b>114</b>	<b>+1</b>	<b>+0.8%</b>	<b>+3</b>	<b>+8</b>
Therapy Professions	16	15	-1	-7.2%	-0	-1
Social Care	258	267	+9	+3.6%	+15	+22
Social Workers	6	6	-0	-0.3%	-1	-1
Psychologists	7	6	-0	-3.5%	+0	+0
<b>Health &amp; Social Care Professionals</b>	<b>286</b>	<b>294</b>	<b>+8</b>	<b>+2.8%</b>	<b>+14</b>	<b>+21</b>
Management (VIII & above)	5	5			-1	-1
Administrative/ Supervisory (V to VII)	10	10	+1	+10.2%	-0	-0
Clerical (III & IV)	19	18	-1	-3.5%	+0	-0
<b>Management &amp; Administrative</b>	<b>33</b>	<b>34</b>	<b>+0</b>	<b>+0.9%</b>	<b>-1</b>	<b>-1</b>
Support	29	30	+1	+2.9%	-5	-4
Maintenance/ Technical	14	14	-0	-0.6%	+2	+2
<b>General Support</b>	<b>43</b>	<b>44</b>	<b>+1</b>	<b>+1.7%</b>	<b>-3</b>	<b>-3</b>
Health Care Assistants	157	160	+2	+1.5%	-12	-4
Care, other	144	148	+3	+2.2%	+6	+9
<b>Patient &amp; Client Care</b>	<b>302</b>	<b>307</b>	<b>+6</b>	<b>+1.9%</b>	<b>-6</b>	<b>+5</b>

Nov 2020 (Dec 2019 figure: 1,431)	WTE Oct 2020	WTE Nov 2020	WTE change since Oct 20	% change since Oct 20	WTE change since Dec 19	WTE change since Nov 19
<b>Overall</b>	<b>1,433</b>	<b>1,449</b>	<b>+16</b>	<b>+1.1%</b>	<b>+19</b>	<b>+34</b>
Consultants	6	6			-2	-2
Registrars	1	1			-3	-3
Medical/ Dental, other	4	4				
<b>Medical &amp; Dental</b>	<b>11</b>	<b>11</b>			<b>-5</b>	<b>-5</b>
Nurse/ Midwife Manager	86	89	+3	+3.2%	+5	+5
Staff Nurse/ Staff Midwife	160	166	+6	+3.9%	+4	+5
<b>Nursing &amp; Midwifery</b>	<b>246</b>	<b>255</b>	<b>+9</b>	<b>+3.7%</b>	<b>+9</b>	<b>+10</b>
Therapy Professions	48	47	-0	-0.6%	-4	-1
Social Care	549	564	+14	+2.6%	+39	+48
Social Workers	20	21	+1	+4.8%	+1	+2
Psychologists	19	21	+1	+7.5%	+2	+3
H&SC, Other	9	9	-1	-7.4%	-1	-1
<b>Health &amp; Social Care Professionals</b>	<b>646</b>	<b>661</b>	<b>+16</b>	<b>+2.4%</b>	<b>+37</b>	<b>+50</b>
Management (VIII & above)	20	20			-2	-1
Administrative/ Supervisory (V to VII)	44	45	+1	+2.9%	+2	+4
Clerical (III & IV)	54	54	-0	-0.6%	+0	+1
<b>Management &amp; Administrative</b>	<b>118</b>	<b>118</b>	<b>+1</b>	<b>+0.8%</b>	<b>+0</b>	<b>+3</b>
Support	47	48	+1	+1.1%	-48	-48
Maintenance/ Technical	12	12			-0	-0
<b>General Support</b>	<b>59</b>	<b>60</b>	<b>+0</b>	<b>+0.8%</b>	<b>-48</b>	<b>-48</b>
Health Care Assistants	329	319	-9	-2.9%	+26	+24
Care, other	24	24	-0	-2.0%	-1	-1
<b>Patient &amp; Client Care</b>	<b>353</b>	<b>343</b>	<b>-10</b>	<b>-2.8%</b>	<b>+25</b>	<b>+23</b>

## St. Patrick's, Kilkenny

Nov 2020 (Dec 2019 figure: 279)	WTE Oct 2020	WTE Nov 2020	WTE change since Oct 20	% change since Oct 20	WTE change since Dec 19	WTE change since Nov 19
<b>Overall</b>	<b>287</b>	<b>288</b>	<b>+0</b>	<b>+0.1%</b>	<b>+9</b>	<b>-1</b>
Nurse/ Midwife Manager	12	13	+1	+7.7%	+3	-1
Staff Nurse/ Staff Midwife	26	27	+1	+4.7%	+2	+3
<b>Nursing &amp; Midwifery</b>	<b>38</b>	<b>40</b>	<b>+2</b>	<b>+5.7%</b>	<b>+5</b>	<b>+2</b>
Social Care	27	29	+2	+7.1%	-6	-6
Social Workers		1	+1	-100.0%	-0	-0
H&SC, Other	3	2	-2	-51.9%	-1	-1
<b>Health &amp; Social Care Professionals</b>	<b>30</b>	<b>32</b>	<b>+2</b>	<b>+5.5%</b>	<b>-8</b>	<b>-8</b>
Executive Management	1	1			+1	+1
Management (VIII & above)	1	1			+1	+1
Administrative/ Supervisory (V to VII)	7	6	-1	-15.3%	-1	-1
Clerical (III & IV)	13	12	-0	-0.7%	-1	-2
<b>Management &amp; Administrative</b>	<b>21</b>	<b>20</b>	<b>-1</b>	<b>-5.8%</b>	<b>-1</b>	<b>-2</b>
Support	3	2	-0	-8.1%	-4	-8
Maintenance/ Technical	3	3				
<b>General Support</b>	<b>6</b>	<b>5</b>	<b>-0</b>	<b>-3.9%</b>	<b>-4</b>	<b>-8</b>
<b>Patient &amp; Client Care</b>	<b>192</b>	<b>190</b>	<b>-2</b>	<b>-1.1%</b>	<b>+17</b>	<b>+14</b>

## Sunbeam House Services

Nov 2020 (Dec 2019 figure: 449)	WTE Oct 2020	WTE Nov 2020	WTE change since Oct 20	% change since Oct 20	WTE change since Dec 19	WTE change since Nov 19
<b>Overall</b>	<b>445</b>	<b>464</b>	<b>+19</b>	<b>+4.4%</b>	<b>+15</b>	<b>+14</b>
Nurse/ Midwife Manager	3	3			-1	-1
Staff Nurse/ Staff Midwife	33	36	+3	+8.9%	-1	-1
<b>Nursing &amp; Midwifery</b>	<b>36</b>	<b>39</b>	<b>+3</b>	<b>+8.1%</b>	<b>-2</b>	<b>-2</b>
Therapy Professions	1	1	-0	-1.4%	+0	+0
Social Care	190	200	+9	+5.0%	+18	+18
Social Workers	2	2				+0
Psychologists	1	1			+0	+0
H&SC, Other				-100.0%	-1	-1
<b>Health &amp; Social Care Professionals</b>	<b>195</b>	<b>204</b>	<b>+9</b>	<b>+4.9%</b>	<b>+18</b>	<b>+18</b>
Management (VIII & above)	9	9				-1
Administrative/ Supervisory (V to VII)	9	8	-1	-11.1%	-1	-1
Clerical (III & IV)	27	26	-2	-5.8%	+2	+2
<b>Management &amp; Administrative</b>	<b>45</b>	<b>43</b>	<b>-3</b>	<b>-5.7%</b>	<b>+1</b>	<b>+0</b>
Support	9	9	-0	-1.2%	+4	-3
Maintenance/ Technical		1	+1	-100.0%	-1	-1
<b>General Support</b>	<b>9</b>	<b>10</b>	<b>+1</b>	<b>+9.8%</b>	<b>+3</b>	<b>-4</b>
Health Care Assistants	66	69	+2	+3.5%	-3	+5
Care, other	94	100	+6	+6.8%	-3	-3
<b>Patient &amp; Client Care</b>	<b>160</b>	<b>169</b>	<b>+9</b>	<b>+5.4%</b>	<b>-5</b>	<b>+2</b>

Bros. of Charity, West Region

Nov 2020 (Dec 2019 figure: 1,288)	WTE Oct 2020	WTE Nov 2020	WTE change since Oct 20	% change since Oct 20	WTE change since Dec 19	WTE change since Nov 19
<b>Overall</b>	<b>1,274</b>	<b>1,289</b>	<b>+15</b>	<b>+1.2%</b>	<b>+1</b>	<b>+8</b>
Consultants	2	2				
Registrars	2	2				
<b>Medical &amp; Dental</b>	<b>4</b>	<b>4</b>				
Nurse/ Midwife Manager	67	67	-0	-0.1%	+0	+0
Nurse/ Midwife Specialist & AN/MP	5	5	+0	+2.2%	-0	-0
Staff Nurse/ Staff Midwife	115	119	+3	+2.8%	-1	+1
<i>Pre-registration Nurse Intern (COVID-19)</i>	0	1	+0	+139.1%	+1	+1
Nursing/ Midwifery Student	0	1	+0	+139.1%	+1	+1
<b>Nursing &amp; Midwifery</b>	<b>188</b>	<b>191</b>	<b>+4</b>	<b>+1.9%</b>	<b>-1</b>	<b>+1</b>
Therapy Professions	28	30	+2	+6.9%	-4	-4
Social Care	206	209	+3	+1.6%	+14	+9
Social Workers	26	25	-0	-1.6%	-0	-0
Psychologists	12	13	+0	+3.6%	-1	-1
H&SC, Other	14	16	+1	+10.4%	-0	+0
<b>Health &amp; Social Care Professionals</b>	<b>286</b>	<b>293</b>	<b>+7</b>	<b>+2.4%</b>	<b>+8</b>	<b>+3</b>
Management (VIII & above)	14	13	-1	-7.2%	-0	-0
Administrative/ Supervisory (V to VII)	36	37	+1	+1.6%	+2	+2
Clerical (III & IV)	37	37	+0	+0.1%	+0	+1
<b>Management &amp; Administrative</b>	<b>87</b>	<b>87</b>	<b>-0</b>	<b>-0.4%</b>	<b>+2</b>	<b>+3</b>
Support	42	43	+1	+3.0%	-2	-4
Maintenance/ Technical	4	5	+1	+15.8%	+0	+0
<b>General Support</b>	<b>46</b>	<b>48</b>	<b>+2</b>	<b>+4.2%</b>	<b>-2</b>	<b>-4</b>
Health Care Assistants	544	543	-0	-0.1%	-2	+4
Care, other	119	123	+3	+2.9%	-4	+0
<b>Patient &amp; Client Care</b>	<b>663</b>	<b>666</b>	<b>+3</b>	<b>+0.5%</b>	<b>-6</b>	<b>+4</b>

## Social Care Disability Services Employment by Grade Group: Nov 2020

Nov 2020 (Dec 2019 figure: 18,303)	WTE Oct 2020	WTE Nov 2020	WTE change since Oct 20	% change since Oct 20	WTE change since Dec 19	WTE change since Nov 19
<b>Overall</b>	<b>18,691</b>	<b>18,873</b>	<b>+182</b>	<b>+1.0%</b>	<b>+570</b>	<b>+704</b>
Consultant Paediatrics	3	3	+0	+0.3%		
Consultant Psychiatry	21	21	-0	-2.0%	-0	-0
<b>Consultants</b>	<b>24</b>	<b>24</b>	<b>-0</b>	<b>-1.7%</b>	<b>-0</b>	<b>-0</b>
Registrar	2	3	+0	+19.3%	-4	-4
Senior Registrar	3	3			+1	+1
Specialist Registrar	2	2			-2	-2
<b>Registrars</b>	<b>7</b>	<b>8</b>	<b>+0</b>	<b>+6.4%</b>	<b>-5</b>	<b>-5</b>
<b>SHO/ Interns</b>	<b>9</b>	<b>9</b>	<b>-0</b>	<b>-4.1%</b>	<b>+2</b>	<b>+2</b>
<b>Medical/ Dental, other</b>	<b>15</b>	<b>14</b>	<b>-1</b>	<b>-4.4%</b>	<b>+0</b>	<b>+0</b>
<b>Medical &amp; Dental</b>	<b>56</b>	<b>55</b>	<b>-1</b>	<b>-1.8%</b>	<b>-3</b>	<b>-3</b>
Clinical Nurse/ Midwife Manager	794	813	+19	+2.4%	+3	+1
Director Nursing/Midwifery, Assistant	40	42	+2	+5.2%	+1	+3
Director of Nursing/Midwifery	39	40	+1	+2.7%	-2	-2
<b>Nurse/ Midwife Manager</b>	<b>873</b>	<b>896</b>	<b>+22</b>	<b>+2.6%</b>	<b>+2</b>	<b>+3</b>
Advanced Nurse/ Midwife Practitioner	9	8	-1	-8.8%	+6	+6
Clinical Nurse/ Midwife Specialist	53	57	+4	+7.4%	-3	-3
<b>Nurse/ Midwife Specialist &amp; AN/MP</b>	<b>62</b>	<b>65</b>	<b>+3</b>	<b>+5.1%</b>	<b>+3</b>	<b>+3</b>
Staff Nurse [Intellectual Disability]	1,484	1,659	+175	+11.8%	+62	+63
Staff Nurse [Psychiatric]	67	55	-12	-18.1%	-29	-31
Staff Nurses [General/ Children's]	981	862	-118	-12.1%	-29	-5
<b>Staff Nurse/ Staff Midwife</b>	<b>2,532</b>	<b>2,576</b>	<b>+44</b>	<b>+1.8%</b>	<b>+4</b>	<b>+27</b>
<b>Public Health Nurse</b>	<b>6</b>	<b>7</b>	<b>+1</b>	<b>+8.5%</b>	<b>+0</b>	<b>+1</b>
Pre-registration Nurse/ Midwife Intern	7	4	-3	-48.6%	-25	-13
Pre-registration Nurse Intern (COVID-19)	47	41	-6	-12.1%	+41	+41
Post-registration Nurse/ Midwife Student	2	2	+0	+1.6%	+2	+2
Nursing/ Midwifery awaiting registration	13	13	+0	+2.0%	-1	+8
<b>Nursing/ Midwifery Student</b>	<b>68</b>	<b>59</b>	<b>-9</b>	<b>-12.9%</b>	<b>+17</b>	<b>+38</b>
Nursing Education/Clinical	44	23	-21	-47.7%	+2	+2
Other Nursing/ Midwifery	1	1				
<b>Nursing/ Midwifery other</b>	<b>45</b>	<b>24</b>	<b>-21</b>	<b>-46.6%</b>	<b>+2</b>	<b>+2</b>
<b>Nursing &amp; Midwifery</b>	<b>3,586</b>	<b>3,627</b>	<b>+41</b>	<b>+1.1%</b>	<b>+29</b>	<b>+73</b>
Dietitians	17	17	-0	-0.5%	-2	-1
Occupational Therapists	269	276	+6	+2.4%	+12	+18
Physiotherapists	191	194	+3	+1.4%	+5	+5
Speech & Language Therapists	307	307	-0	-0.1%	+15	+16
<b>Therapy Professions</b>	<b>785</b>	<b>794</b>	<b>+9</b>	<b>+1.1%</b>	<b>+29</b>	<b>+38</b>
Clinical Engineering	13	14	+1	+7.7%	+1	+1
Clinical Measurement	2	2			+1	+1
Medical Laboratory	4	4				
Phlebotomists				-100.0%	-1	-1
Radiographers	1	1				
<b>Health Science/ Diagnostics</b>	<b>20</b>	<b>21</b>	<b>+1</b>	<b>+5.0%</b>	<b>+1</b>	<b>+1</b>
<b>Social Care</b>	<b>2,718</b>	<b>2,781</b>	<b>+63</b>	<b>+2.3%</b>	<b>+186</b>	<b>+206</b>
<b>Social Workers</b>	<b>223</b>	<b>227</b>	<b>+3</b>	<b>+1.5%</b>	<b>+8</b>	<b>+9</b>
<b>Psychologists</b>	<b>227</b>	<b>233</b>	<b>+6</b>	<b>+2.5%</b>	<b>+29</b>	<b>+32</b>
<b>Pharmacy</b>	<b>7</b>	<b>6</b>	<b>-1</b>	<b>-13.9%</b>	<b>-1</b>	<b>-1</b>
Counsellor Therapists	21	20	-0	-1.9%	+1	+1
Other Health & Social Care	48	49	+1	+2.1%	-1	-1

Nov 2020 (Dec 2019 figure: 18,303)	WTE Oct 2020	WTE Nov 2020	WTE change since Oct 20	% change since Oct 20	WTE change since Dec 19	WTE change since Nov 19
<b>Overall</b>	<b>18,691</b>	<b>18,873</b>	<b>+182</b>	<b>+1.0%</b>	<b>+570</b>	<b>+704</b>
Play Therapists/ Specialists	12	11	-1	-8.7%	-5	-4
<b>H&amp;SC, Other</b>	<b>81</b>	<b>80</b>	<b>-0</b>	<b>-0.5%</b>	<b>-5</b>	<b>-4</b>
<b>Health &amp; Social Care Professionals</b>	<b>4,061</b>	<b>4,141</b>	<b>+80</b>	<b>+2.0%</b>	<b>+247</b>	<b>+281</b>
Executive Management	35	36	+1	+2.8%	+5	+5
Senior Management (VIII & GM)	165	168	+3	+1.6%	+19	+16
<b>Management (VIII &amp; above)</b>	<b>200</b>	<b>204</b>	<b>+4</b>	<b>+1.8%</b>	<b>+24</b>	<b>+21</b>
Middle Management (V-VII)	499	503	+4	+0.9%	+39	+43
Other Administrative	15	16	+1	+6.7%	+1	-0
<b>Administrative/ Supervisory (V to VII)</b>	<b>514</b>	<b>519</b>	<b>+5</b>	<b>+1.0%</b>	<b>+40</b>	<b>+43</b>
<b>Clerical (III &amp; IV)</b>	<b>679</b>	<b>685</b>	<b>+5</b>	<b>+0.8%</b>	<b>+25</b>	<b>+33</b>
<b>Management &amp; Administrative</b>	<b>1,393</b>	<b>1,407</b>	<b>+14</b>	<b>+1.0%</b>	<b>+88</b>	<b>+96</b>
Catering	100	100	-0	-0.3%	+2	-1
Household Services	402	409	+7	+1.6%	-11	-18
Other Labs & Associated	1	1				
Other Support	139	139	+1	+0.5%	-49	-50
Portering	27	26	-1	-4.0%	-1	-2
<b>Support</b>	<b>669</b>	<b>675</b>	<b>+6</b>	<b>+0.9%</b>	<b>-59</b>	<b>-71</b>
Maintenance	119	121	+1	+1.2%	+5	+4
Technical Services	9	11	+2	+22.0%	+3	+3
<b>Maintenance/ Technical</b>	<b>129</b>	<b>132</b>	<b>+3</b>	<b>+2.7%</b>	<b>+8</b>	<b>+7</b>
<b>General Support</b>	<b>797</b>	<b>807</b>	<b>+9</b>	<b>+1.2%</b>	<b>-52</b>	<b>-64</b>
HCA, Nurse's Aide, etc.	7,018	7,033	+14	+0.2%	+216	+250
Health & Social Care Assistants	10	9	-0	-5.0%	-0	+1
<b>Health Care Assistants</b>	<b>7,028</b>	<b>7,042</b>	<b>+14</b>	<b>+0.2%</b>	<b>+216</b>	<b>+251</b>
<b>Home Help</b>	<b>105</b>	<b>98</b>	<b>-7</b>	<b>-6.9%</b>	<b>-11</b>	<b>-9</b>
<b>Care, other</b>	<b>1,664</b>	<b>1,696</b>	<b>+31</b>	<b>+1.9%</b>	<b>+56</b>	<b>+79</b>
<b>Patient &amp; Client Care</b>	<b>8,798</b>	<b>8,836</b>	<b>+38</b>	<b>+0.4%</b>	<b>+261</b>	<b>+321</b>

## Employment by WTE, Headcount, Gender, Full-Time /Part-Time etc.: Nov 2020

Social Care Disability Services Staff Group	WTE	Headcount	WTE: no.	% Male	% female	Male WTE: no.	Female WTE: no.	% Total Perm	% Male Perm	% Female Perm	% Total Full Time	% Total Part Time	% Male FT	% Female FT
<b>Overall</b>	<b>18,873</b>	<b>22,349</b>	<b>1.18</b>	<b>19.2%</b>	<b>80.8%</b>	<b>1.12</b>	<b>1.20</b>	<b>87.4%</b>	<b>86.8%</b>	<b>87.5%</b>	<b>57.2%</b>	<b>42.8%</b>	<b>69.2%</b>	<b>54.4%</b>
Consultant Paediatrics	3	6	1.97	16.7%	83.3%	1.82	2.00	66.7%	66.7%	80.0%	33.3%	66.7%	100.0%	20.0%
Consultant Psychiatry	21	27	1.32	29.6%	70.4%	1.28	1.33	81.5%	81.5%	78.9%	59.3%	40.7%	75.0%	52.6%
<b>Consultants</b>	<b>24</b>	<b>33</b>	<b>1.40</b>	<b>27.3%</b>	<b>72.7%</b>	<b>1.32</b>	<b>1.43</b>	<b>78.8%</b>	<b>77.8%</b>	<b>79.2%</b>	<b>54.5%</b>	<b>45.5%</b>	<b>77.8%</b>	<b>45.8%</b>
Registrar	3	4	1.35	75.0%	25.0%	1.52	1.00	0.0%	0.0%	0.0%	100.0%	0.0%	100.0%	100.0%
Senior Registrar	3	3	1.00		100.0%		1.00	0.0%	0.0%	0.0%	100.0%	0.0%		100.0%
Specialist Registrar	2	2	1.00	50.0%	50.0%	1.00	1.00	0.0%	0.0%	0.0%	100.0%	0.0%	100.0%	100.0%
<b>Registrars</b>	<b>8</b>	<b>9</b>	<b>1.13</b>	<b>44.4%</b>	<b>55.6%</b>	<b>1.35</b>	<b>1.00</b>	<b>0.0%</b>	<b>0.0%</b>	<b>0.0%</b>	<b>100.0%</b>	<b>0.0%</b>	<b>100.0%</b>	<b>100.0%</b>
<b>SHO/ Interns</b>	<b>9</b>	<b>11</b>	<b>1.24</b>	<b>18.2%</b>	<b>81.8%</b>	<b>1.04</b>	<b>1.30</b>	<b>0.0%</b>	<b>0.0%</b>	<b>0.0%</b>	<b>100.0%</b>	<b>0.0%</b>	<b>100.0%</b>	<b>100.0%</b>
<b>Medical/ Dental, other</b>	<b>14</b>	<b>22</b>	<b>1.53</b>	<b>45.5%</b>	<b>54.5%</b>	<b>1.27</b>	<b>1.84</b>	<b>90.9%</b>	<b>80.0%</b>	<b>100.0%</b>	<b>40.9%</b>	<b>59.1%</b>	<b>50.0%</b>	<b>33.3%</b>
<b>Medical &amp; Dental</b>	<b>55</b>	<b>75</b>	<b>1.37</b>	<b>33.3%</b>	<b>66.7%</b>	<b>1.27</b>	<b>1.42</b>	<b>61.3%</b>	<b>60.0%</b>	<b>62.0%</b>	<b>62.7%</b>	<b>37.3%</b>	<b>72.0%</b>	<b>58.0%</b>
Clinical Nurse/ Midwife Manager	813	870	1.07	12.8%	87.2%	1.01	1.08	93.6%	93.6%	94.1%	81.3%	18.7%	98.2%	78.8%
Director Nursing/Midwifery, Assistant	42	44	1.04	15.9%	84.1%	1.02	1.05	97.7%	97.7%	97.3%	93.2%	6.8%	100.0%	91.9%
Director of Nursing/Midwifery	40	41	1.02	7.3%	92.7%	1.00	1.03	97.6%	97.6%	97.4%	97.6%	2.4%	100.0%	97.4%
<b>Nurse/ Midwife Manager</b>	<b>896</b>	<b>955</b>	<b>1.07</b>	<b>12.7%</b>	<b>87.3%</b>	<b>1.01</b>	<b>1.08</b>	<b>93.9%</b>	<b>90.9%</b>	<b>94.4%</b>	<b>82.5%</b>	<b>17.5%</b>	<b>98.3%</b>	<b>80.2%</b>
Advanced Nurse/ Midwife Practitioner	8	8	1.00	37.5%	62.5%	1.00	1.00	100.0%	100.0%	100.0%	100.0%	0.0%	100.0%	100.0%
Clinical Nurse/ Midwife Specialist	57	67	1.17	4.5%	95.5%	1.01	1.18	98.5%	98.5%	98.4%	52.2%	47.8%	100.0%	50.0%
<b>Nurse/ Midwife Specialist &amp; AN/MP</b>	<b>65</b>	<b>75</b>	<b>1.15</b>	<b>8.0%</b>	<b>92.0%</b>	<b>1.01</b>	<b>1.16</b>	<b>98.7%</b>	<b>100.0%</b>	<b>98.6%</b>	<b>57.3%</b>	<b>42.7%</b>	<b>100.0%</b>	<b>53.6%</b>
Staff Nurse [Intellectual Disability]	1,659	1,929	1.16	8.2%	91.8%	1.09	1.17	94.7%	94.7%	94.6%	62.8%	37.2%	83.6%	61.0%
Staff Nurse [Psychiatric]	55	70	1.28	17.1%	82.9%	1.50	1.24	81.4%	81.4%	87.9%	57.1%	42.9%	50.0%	58.6%
Staff Nurses [General/ Children's]	862	1,001	1.16	11.9%	88.1%	1.07	1.17	94.3%	94.3%	94.4%	65.9%	34.1%	84.9%	63.4%
<b>Staff Nurse/ Staff Midwife</b>	<b>2,576</b>	<b>3,000</b>	<b>1.16</b>	<b>9.7%</b>	<b>90.3%</b>	<b>1.09</b>	<b>1.17</b>	<b>94.2%</b>	<b>92.8%</b>	<b>94.4%</b>	<b>63.7%</b>	<b>36.3%</b>	<b>82.8%</b>	<b>61.7%</b>
<b>Public Health Nurse</b>	<b>7</b>	<b>8</b>	<b>1.21</b>		<b>100.0%</b>	<b>#DIV/0</b>	<b>1.21</b>	<b>100.0%</b>		<b>100.0%</b>	<b>50.0%</b>	<b>50.0%</b>	<b>#DIV/0</b>	<b>50.0%</b>
<b>Nursing/ Midwifery Student</b>	<b>59</b>	<b>70</b>	<b>1.18</b>	<b>7.1%</b>	<b>92.9%</b>	<b>1.45</b>	<b>1.16</b>	<b>2.9%</b>	<b>0.0%</b>	<b>3.1%</b>	<b>91.4%</b>	<b>8.6%</b>	<b>100.0%</b>	<b>90.8%</b>
Nursing Education/Clinical	23	27	1.17		100.0%		1.17	96.3%	96.3%	96.3%	77.8%	22.2%		77.8%
Other Nursing/ Midwifery	1	1	1.00	100.0%		1.00		100.0%	100.0%		100.0%	0.0%	100.0%	
<b>Nursing/ Midwifery other</b>	<b>24</b>	<b>28</b>	<b>1.17</b>	<b>3.6%</b>	<b>96.4%</b>	<b>1.00</b>	<b>1.17</b>	<b>96.4%</b>	<b>100.0%</b>	<b>96.3%</b>	<b>78.6%</b>	<b>21.4%</b>	<b>100.0%</b>	<b>77.8%</b>
<b>Nursing &amp; Midwifery</b>	<b>3,627</b>	<b>4,136</b>	<b>1.14</b>	<b>10.2%</b>	<b>89.8%</b>	<b>1.07</b>	<b>1.15</b>	<b>92.7%</b>	<b>91.3%</b>	<b>92.9%</b>	<b>68.5%</b>	<b>31.5%</b>	<b>87.7%</b>	<b>66.3%</b>



Dietitians	17	22	1.30		100.0%		1.30	81.8%	81.8%	81.8%	50.0%	50.0%		50.0%
Occupational Therapists	276	317	1.15	5.7%	94.3%	1.09	1.15	92.1%	92.1%	92.3%	76.3%	23.7%	83.3%	75.9%
Physiotherapists	194	227	1.17	17.2%	82.8%	1.02	1.21	90.3%	90.3%	89.4%	66.5%	33.5%	94.9%	60.6%
Speech & Language Therapists	307	355	1.16	1.4%	98.6%	1.00	1.16	91.5%	91.5%	91.4%	74.6%	25.4%	100.0%	74.3%
<b>Therapy Professions</b>	<b>794</b>	<b>921</b>	<b>1.16</b>	<b>6.7%</b>	<b>93.3%</b>	<b>1.04</b>	<b>1.17</b>	<b>91.2%</b>	<b>93.5%</b>	<b>91.0%</b>	<b>72.6%</b>	<b>27.4%</b>	<b>91.9%</b>	<b>71.2%</b>
Clinical Engineering	14	14	1.00	85.7%	14.3%	1.00	1.00	85.7%	85.7%	50.0%	92.9%	7.1%	91.7%	100.0%
Clinical Measurement	2	2	1.00	100.0%		1.00		100.0%	100.0%		100.0%	0.0%	100.0%	
Medical Laboratory	4	4	1.00	75.0%	25.0%	1.00	1.00	75.0%	75.0%	0.0%	100.0%	0.0%	100.0%	100.0%
Radiographers	1	1	1.00		100.0%		1.00	100.0%	100.0%	100.0%	100.0%	0.0%		100.0%
<b>Health Science/ Diagnostics</b>	<b>21</b>	<b>21</b>	<b>1.00</b>	<b>81.0%</b>	<b>19.0%</b>	<b>1.00</b>	<b>1.00</b>	<b>85.7%</b>	<b>94.1%</b>	<b>50.0%</b>	<b>95.2%</b>	<b>4.8%</b>	<b>94.1%</b>	<b>100.0%</b>
<b>Social Care</b>	<b>2,781</b>	<b>3,257</b>	<b>1.17</b>	<b>15.9%</b>	<b>84.1%</b>	<b>1.09</b>	<b>1.19</b>	<b>90.0%</b>	<b>90.4%</b>	<b>89.9%</b>	<b>49.2%</b>	<b>50.8%</b>	<b>63.2%</b>	<b>46.6%</b>
<b>Social Workers</b>	<b>227</b>	<b>269</b>	<b>1.19</b>	<b>16.7%</b>	<b>83.3%</b>	<b>1.06</b>	<b>1.22</b>	<b>91.8%</b>	<b>88.9%</b>	<b>92.4%</b>	<b>69.9%</b>	<b>30.1%</b>	<b>86.7%</b>	<b>66.5%</b>
<b>Psychologists</b>	<b>233</b>	<b>267</b>	<b>1.15</b>	<b>22.1%</b>	<b>77.9%</b>	<b>1.09</b>	<b>1.16</b>	<b>91.4%</b>	<b>91.5%</b>	<b>91.3%</b>	<b>73.0%</b>	<b>27.0%</b>	<b>83.1%</b>	<b>70.2%</b>
<b>Pharmacy</b>	<b>6</b>	<b>8</b>	<b>1.36</b>	<b>12.5%</b>	<b>87.5%</b>	<b>2.63</b>	<b>1.27</b>	<b>87.5%</b>	<b>100.0%</b>	<b>85.7%</b>	<b>62.5%</b>	<b>37.5%</b>	<b>0.0%</b>	<b>71.4%</b>
Counsellor Therapists	20	24	1.18	8.3%	91.7%	1.00	1.20	100.0%	100.0%	100.0%	58.3%	41.7%	100.0%	54.5%
Other Health & Social Care	49	63	1.28	17.5%	82.5%	1.11	1.32	88.9%	88.9%	90.4%	47.6%	52.4%	72.7%	42.3%
Play Therapists/ Specialists	11	14	1.31	21.4%	78.6%	1.00	1.43	100.0%	100.0%	100.0%	50.0%	50.0%	100.0%	36.4%
<b>H&amp;SC, Other</b>	<b>80</b>	<b>101</b>	<b>1.26</b>	<b>15.8%</b>	<b>84.2%</b>	<b>1.07</b>	<b>1.30</b>	<b>93.1%</b>	<b>87.5%</b>	<b>94.1%</b>	<b>50.5%</b>	<b>49.5%</b>	<b>81.3%</b>	<b>44.7%</b>
<b>Health &amp; Social Care</b>	<b>4,141</b>	<b>4,844</b>	<b>1.17</b>	<b>14.8%</b>	<b>85.2%</b>	<b>1.08</b>	<b>1.19</b>	<b>90.4%</b>	<b>90.7%</b>	<b>90.4%</b>	<b>56.4%</b>	<b>43.6%</b>	<b>69.8%</b>	<b>54.1%</b>
Executive Management	36	36	1.00	38.9%	61.1%	1.00	1.00	88.9%	88.9%	90.9%	100.0%	0.0%	100.0%	100.0%
Senior Management (VIII & GM)	168	172	1.03	30.2%	69.8%	1.00	1.04	95.3%	95.3%	95.0%	96.5%	3.5%	100.0%	95.0%
<b>Management (VIII &amp; above)</b>	<b>204</b>	<b>208</b>	<b>1.02</b>	<b>31.7%</b>	<b>68.3%</b>	<b>1.00</b>	<b>1.03</b>	<b>94.2%</b>	<b>93.9%</b>	<b>94.4%</b>	<b>97.1%</b>	<b>2.9%</b>	<b>100.0%</b>	<b>95.8%</b>
Middle Management (V-VII)	503	540	1.07	22.2%	77.8%	1.03	1.09	92.0%	92.0%	92.9%	81.9%	18.1%	94.2%	78.3%
Other Administrative	16	16	1.01	18.8%	81.3%	1.00	1.01	100.0%	100.0%	100.0%	93.8%	6.3%	100.0%	92.3%
<b>Administrative/ Supervisory (V to VII)</b>	<b>519</b>	<b>556</b>	<b>1.07</b>	<b>22.1%</b>	<b>77.9%</b>	<b>1.03</b>	<b>1.09</b>	<b>92.3%</b>	<b>89.4%</b>	<b>93.1%</b>	<b>82.2%</b>	<b>17.8%</b>	<b>94.3%</b>	<b>78.8%</b>
<b>Clerical (III &amp; IV)</b>	<b>685</b>	<b>834</b>	<b>1.22</b>	<b>9.6%</b>	<b>90.4%</b>	<b>1.14</b>	<b>1.23</b>	<b>86.8%</b>	<b>78.8%</b>	<b>87.7%</b>	<b>57.4%</b>	<b>42.6%</b>	<b>70.0%</b>	<b>56.1%</b>
<b>Management &amp; Administrative</b>	<b>1,407</b>	<b>1,598</b>	<b>1.14</b>	<b>16.8%</b>	<b>83.2%</b>	<b>1.05</b>	<b>1.15</b>	<b>89.7%</b>	<b>87.4%</b>	<b>90.1%</b>	<b>71.2%</b>	<b>28.8%</b>	<b>88.5%</b>	<b>67.7%</b>
Catering	100	121	1.21	29.8%	70.2%	1.19	1.23	98.3%	98.3%	98.8%	59.5%	40.5%	86.1%	48.2%
Household Services	409	579	1.42	15.4%	84.6%	1.37	1.43	87.9%	87.9%	90.4%	34.4%	65.6%	53.9%	30.8%
Other Labs & Associated	1	1	1.00		100.0%		1.00	100.0%	100.0%	100.0%	100.0%	0.0%		100.0%
Other Support	139	225	1.61	51.1%	48.9%	1.30	2.16	93.3%	93.3%	100.0%	27.6%	72.4%	47.0%	7.3%
Portering	26	35	1.34	97.1%	2.9%	1.34	1.25	85.7%	85.7%	100.0%	45.7%	54.3%	47.1%	0.0%
<b>Support</b>	<b>675</b>	<b>961</b>	<b>1.42</b>	<b>28.5%</b>	<b>71.5%</b>	<b>1.31</b>	<b>1.47</b>	<b>90.4%</b>	<b>83.9%</b>	<b>93.0%</b>	<b>36.4%</b>	<b>63.6%</b>	<b>54.4%</b>	<b>29.3%</b>
Maintenance	121	134	1.11	93.3%	6.7%	1.09	1.34	94.8%	94.8%	100.0%	76.1%	23.9%	80.0%	22.2%
Technical Services	11	11	0.99	72.7%	27.3%	0.99	1.00	90.9%	90.9%	100.0%	100.0%	0.0%	100.0%	100.0%

<b>Maintenance/ Technical</b>	<b>132</b>	<b>145</b>	<b>1.10</b>	<b>91.7%</b>	<b>8.3%</b>	<b>1.09</b>	<b>1.23</b>	<b>94.5%</b>	<b>94.0%</b>	<b>100.0%</b>	<b>77.9%</b>	<b>22.1%</b>	<b>81.2%</b>	<b>41.7%</b>
<b>General Support</b>	<b>807</b>	<b>1,106</b>	<b>1.37</b>	<b>36.8%</b>	<b>63.2%</b>	<b>1.23</b>	<b>1.47</b>	<b>91.0%</b>	<b>87.2%</b>	<b>93.1%</b>	<b>41.9%</b>	<b>58.1%</b>	<b>63.1%</b>	<b>29.5%</b>
HCA, Nurse's Aide, etc.	7,033	8,314	1.18	23.1%	76.9%	1.11	1.21	83.7%	83.7%	83.6%	52.3%	47.7%	63.7%	48.9%
Health & Social Care Assistants	9	13	1.39		100.0%		1.39	84.6%	84.6%	84.6%	38.5%	61.5%		38.5%
<b>Health Care Assistants</b>	<b>7,042</b>	<b>8,327</b>	<b>1.18</b>	<b>23.0%</b>	<b>77.0%</b>	<b>1.11</b>	<b>1.21</b>	<b>83.7%</b>	<b>84.4%</b>	<b>83.6%</b>	<b>52.3%</b>	<b>47.7%</b>	<b>63.7%</b>	<b>48.9%</b>
<b>Home Help</b>	<b>98</b>	<b>269</b>	<b>2.74</b>	<b>8.9%</b>	<b>91.1%</b>	<b>4.61</b>	<b>2.64</b>	<b>28.3%</b>	<b>41.7%</b>	<b>26.9%</b>	<b>3.7%</b>	<b>96.3%</b>	<b>4.2%</b>	<b>3.7%</b>
<b>Care, other</b>	<b>1,696</b>	<b>1,994</b>	<b>1.18</b>	<b>25.0%</b>	<b>75.0%</b>	<b>1.14</b>	<b>1.19</b>	<b>89.4%</b>	<b>89.6%</b>	<b>89.4%</b>	<b>61.0%</b>	<b>39.0%</b>	<b>71.7%</b>	<b>57.4%</b>
<b>Patient &amp; Client Care</b>	<b>8,836</b>	<b>10,590</b>	<b>1.20</b>	<b>23.0%</b>	<b>77.0%</b>	<b>1.13</b>	<b>1.22</b>	<b>83.4%</b>	<b>85.0%</b>	<b>82.9%</b>	<b>52.7%</b>	<b>47.3%</b>	<b>64.7%</b>	<b>49.1%</b>

## Employment by WTE, Headcount, Gender, Full-Time /Part-Time etc.: Nov 2020

Social Care Disability Services CHO	WTE	Headcount	WTE: no.	% Male	% female	Male WTE: no.	Female WTE: no.	% Total Perm	% Male Perm	% Female Perm	% Total Full Time	% Total Part Time	% Male FT	% Female FT
<b>Overall</b>	<b>18,873</b>	<b>22,349</b>	<b>1.18</b>	<b>19.2%</b>	<b>80.8%</b>	<b>1.12</b>	<b>1.20</b>	<b>87.4%</b>	<b>86.8%</b>	<b>87.5%</b>	<b>57.2%</b>	<b>42.8%</b>	<b>69.2%</b>	<b>54.4%</b>
<b>CHO 1</b>	<b>1,557</b>	<b>1,736</b>	<b>1.12</b>	<b>21.1%</b>	<b>78.9%</b>	<b>1.06</b>	<b>1.13</b>	<b>89.7%</b>	<b>89.7%</b>	<b>90.0%</b>	<b>76.6%</b>	<b>23.4%</b>	<b>89.3%</b>	<b>73.2%</b>
HSE	215	237	1.10	24.1%	75.9%	1.03	1.13	85.7%	85.7%	86.7%	74.7%	25.3%	93.0%	93.0%
Section 38	1,289	1,637	1.27	23.1%	76.9%	1.26	1.27	80.5%	80.5%	80.1%	37.6%	62.4%	42.1%	42.1%
<b>CHO 2</b>	<b>1,505</b>	<b>1,874</b>	<b>1.25</b>	<b>23.2%</b>	<b>76.8%</b>	<b>1.22</b>	<b>1.25</b>	<b>81.2%</b>	<b>81.2%</b>	<b>80.9%</b>	<b>42.3%</b>	<b>57.7%</b>	<b>48.7%</b>	<b>40.3%</b>
HSE	143	161	1.13	19.3%	80.7%	1.02	1.16	86.3%	86.3%	90.0%	72.7%	27.3%	87.1%	87.1%
Section 38	1,786	2,123	1.19	12.0%	88.0%	1.16	1.19	83.8%	83.8%	84.1%	38.6%	61.4%	40.0%	40.0%
<b>CHO 3</b>	<b>1,929</b>	<b>2,284</b>	<b>1.18</b>	<b>12.5%</b>	<b>87.5%</b>	<b>1.14</b>	<b>1.19</b>	<b>84.0%</b>	<b>84.0%</b>	<b>84.5%</b>	<b>41.0%</b>	<b>59.0%</b>	<b>45.1%</b>	<b>40.4%</b>
HSE	307	332	1.08	28.9%	71.1%	1.03	1.11	83.4%	83.4%	81.8%	86.4%	13.6%	96.9%	96.9%
Section 38	2,240	2,703	1.21	19.2%	80.8%	1.14	1.22	85.4%	85.4%	86.7%	63.1%	36.9%	68.7%	68.7%
<b>CHO 4</b>	<b>2,546</b>	<b>3,035</b>	<b>1.19</b>	<b>20.3%</b>	<b>79.7%</b>	<b>1.12</b>	<b>1.21</b>	<b>85.2%</b>	<b>85.2%</b>	<b>86.2%</b>	<b>65.7%</b>	<b>34.3%</b>	<b>73.1%</b>	<b>63.8%</b>
HSE	395	485	1.23	11.5%	88.5%	1.06	1.25	76.3%	76.3%	75.1%	65.8%	34.2%	89.3%	89.3%
Section 38	1,146	1,327	1.16	21.0%	79.0%	1.11	1.17	84.6%	84.6%	84.1%	46.8%	53.2%	60.6%	60.6%
<b>CHO 5</b>	<b>1,541</b>	<b>1,812</b>	<b>1.18</b>	<b>18.5%</b>	<b>81.5%</b>	<b>1.10</b>	<b>1.19</b>	<b>82.3%</b>	<b>82.3%</b>	<b>81.4%</b>	<b>51.9%</b>	<b>48.1%</b>	<b>65.4%</b>	<b>48.8%</b>
HSE	246	270	1.10	18.5%	81.5%	1.01	1.12	90.7%	90.7%	93.6%	80.7%	19.3%	98.0%	98.0%
Section 38	988	1,140	1.15	22.4%	77.6%	1.14	1.16	92.2%	92.2%	91.9%	63.9%	36.1%	73.3%	73.3%
<b>CHO 6</b>	<b>1,233</b>	<b>1,410</b>	<b>1.14</b>	<b>21.6%</b>	<b>78.4%</b>	<b>1.11</b>	<b>1.15</b>	<b>91.9%</b>	<b>91.9%</b>	<b>92.2%</b>	<b>67.2%</b>	<b>32.8%</b>	<b>77.4%</b>	<b>64.3%</b>
HSE	132	221	1.68	14.0%	86.0%	2.02	1.63	75.6%	75.6%	76.8%	48.4%	51.6%	38.7%	38.7%
Section 38	2,945	3,435	1.17	23.7%	76.3%	1.08	1.19	89.4%	89.4%	89.4%	67.8%	32.2%	81.8%	81.8%
<b>CHO 7</b>	<b>3,077</b>	<b>3,656</b>	<b>1.19</b>	<b>23.1%</b>	<b>76.9%</b>	<b>1.10</b>	<b>1.22</b>	<b>88.5%</b>	<b>88.5%</b>	<b>88.6%</b>	<b>66.7%</b>	<b>33.3%</b>	<b>80.2%</b>	<b>62.6%</b>
HSE	610	719	1.18	15.9%	84.1%	1.07	1.20	87.2%	87.2%	86.9%	67.2%	32.8%	86.0%	86.0%
Section 38	1,583	1,917	1.21	21.1%	78.9%	1.13	1.23	96.7%	96.7%	96.9%	40.3%	59.7%	49.4%	49.4%
<b>CHO 8</b>	<b>2,194</b>	<b>2,636</b>	<b>1.20</b>	<b>19.7%</b>	<b>80.3%</b>	<b>1.12</b>	<b>1.22</b>	<b>94.1%</b>	<b>94.1%</b>	<b>94.0%</b>	<b>47.6%</b>	<b>52.4%</b>	<b>57.4%</b>	<b>45.3%</b>
HSE	476	521	1.10	31.3%	68.7%	1.06	1.11	88.9%	88.9%	90.2%	85.6%	14.4%	92.0%	92.0%
Section 38	2,810	3,379	1.20	12.2%	87.8%	1.12	1.22	88.1%	88.1%	88.1%	50.5%	49.5%	64.4%	64.4%
<b>CHO 9</b>	<b>3,285</b>	<b>3,900</b>	<b>1.19</b>	<b>14.8%</b>	<b>85.2%</b>	<b>1.10</b>	<b>1.20</b>	<b>88.2%</b>	<b>88.2%</b>	<b>88.4%</b>	<b>55.2%</b>	<b>44.8%</b>	<b>72.2%</b>	<b>52.3%</b>
<b>other Community Services</b>	<b>6</b>	<b>6</b>	<b>1.01</b>	<b>16.7%</b>	<b>83.3%</b>	<b>1.00</b>	<b>1.01</b>	<b>83.3%</b>	<b>83.3%</b>	<b>80.0%</b>	<b>83.3%</b>	<b>16.7%</b>	<b>100.0%</b>	<b>80.0%</b>

Summary Staff Movement: November 2020

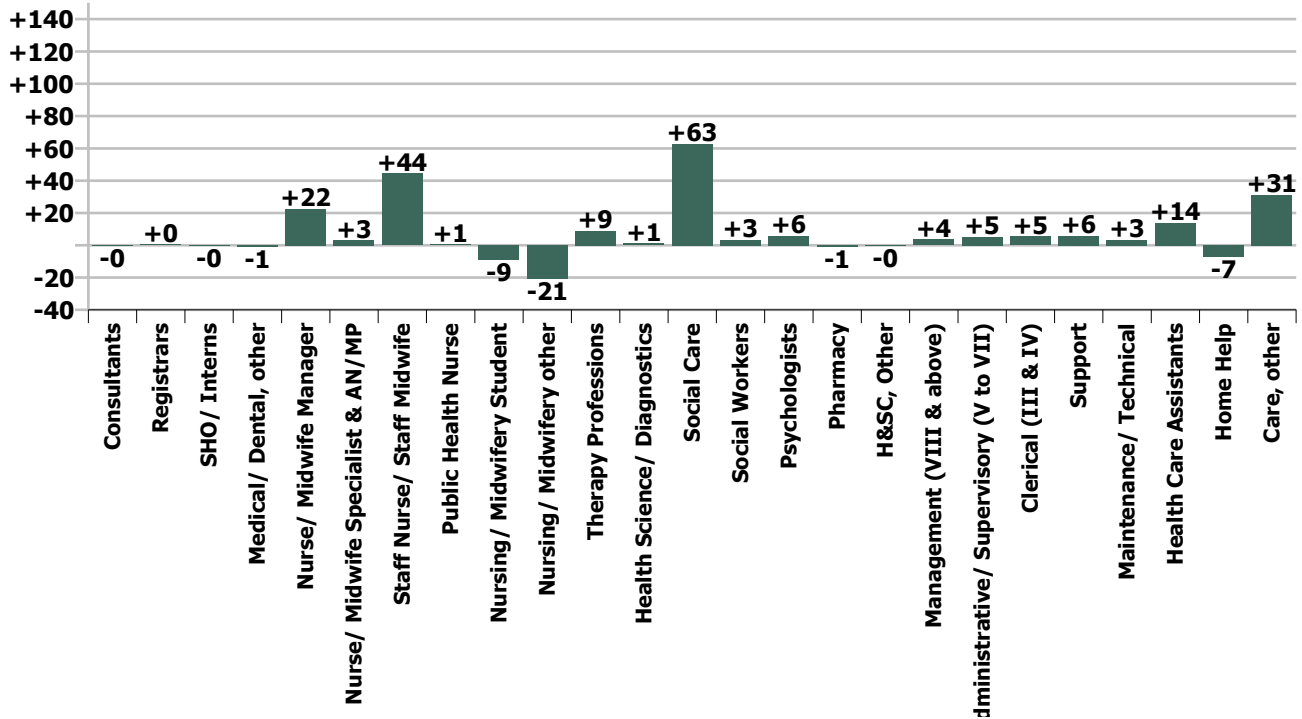
Month-on-month  
Summary

WTE change since Oct 20	% change since Oct 20	overall	Consultants	Registrars	SHO/ Interns	Medical/ Dental, other	Medical & Dental	Nurse/ Midwife Manager	Nurse/ Midwife Specialist & AN/MP	Staff Nurse/ Staff Midwife	Public Health Nurse	Nursing/ Midwifery Student	Nursing/ Midwifery other	Nursing & Midwifery	Therapy Professions	Health Science/ Diagnostics	Social Care	Social Workers	Psychologists	Pharmacy	H&SC, Other	Health & Social Care Professionals	Management (VIII & above)	Administrativ e/ Supervisory (V to VII)	Clerical (III & IV)	Management & Administrativ e	Support	Maintenance/ Technical	General Support	Health Care Assistants	Home Help	Care, other	Patient & Client Care
Overall	+1.0%	+182	-0.4	+0.5	-0.4	-0.7	-1.0	+22.5	+3.2	+44.5	+0.5	-8.8	-21.0	+40.9	+8.8	+1.0	+62.8	+3.4	+5.7	-0.9	-0.4	+80.4	+3.7	+5.3	+5.3	+14.2	+5.9	+3.4	+9.3	+13.9	-7.2	+31.3	+37.9
CHO 1	+0.2%	+4					0.0	+0.2	-0.9	+5.9		-7.4	+0.1	-2.1	-0.7		+1.1	+0.7	-0.3		+0.1	+0.9	-0.0	+0.9	+0.9	+1.8	+0.1	-0.1	+0.0	+1.7	-0.3	+1.5	+2.9
CHO 2	+0.9%	+13					0.0	-0.1	+0.1	+2.3		+0.3		+2.6	+1.0		+3.8	-0.4	+0.4		+1.5	+6.3	-1.0	+0.9	+0.1	-0.0	+1.3	+0.7	+1.9	-1.9		+4.6	+2.6
CHO 3	+1.3%	+25	-0.4				-0.4	-3.3		+11.3		-1.1		+6.9	+4.0		+6.9	+0.9	-0.0		+0.1	+11.9	-0.0	+1.1	+0.9	+2.0	-1.5	+0.2	-1.3	+1.7		+4.3	+5.9
CHO 4	-0.0%	-0	+0.0			-0.7	-0.7	+0.1		+4.6		+0.3		+5.0	-0.1		+4.6	+0.1	+0.3		+0.1	+4.9	-1.4	-0.5	-0.9	-2.8	+1.7	+2.0	+3.7	-7.1		-3.6	-10.6
CHO 5	+0.3%	+4					0.0	+1.4		+1.8	+0.5	-1.2		+2.6	+1.3		+0.2	+1.3	+0.4		-1.6	+1.7	+0.9	+0.7	+0.7	+2.3	+0.1		+0.1	+0.4	-5.7	+2.9	-2.4
CHO 6	+2.4%	+29					0.0	-0.3		+5.2				+4.9	-1.3		+12.4	-0.0	+1.1		+0.1	+12.2	+0.0	-0.1	-1.5	-1.6	-0.2	+1.0	+0.8	+2.5		+10.4	+12.9
CHO 7	+1.6%	+49		+0.5	-0.4		+0.1	-1.3		+4.8				+3.5	+2.8		+9.6	-0.4	+0.1	-0.9		+11.2	+5.2	+2.2	+3.3	+10.7	+3.1	-0.3	+2.8	+10.3	-0.2	+10.7	+20.9
CHO 8	+1.1%	+23					0.0	+22.1	+3.0	+2.2	-0.0	+3.0	-21.1	+9.1	+0.3		+3.1	-0.2	+2.1		+0.1	+5.4		-2.5	+1.2	-1.4	+2.2	-1.0	+1.2	+7.0	-1.1	+2.7	+8.7
CHO 9	+1.1%	+35					0.0	+3.6	+1.0	+6.4		-2.6	-0.0	+8.3	+1.5	+1.0	+21.2	+1.4	+1.6		-0.7	+26.0		+2.5	+0.7	+3.2	-1.0	+1.0	+0.0	-0.7		-2.3	-3.0
other Community Services																																	
		+1.0%	-1.7%	+6.4%	-4.1%	-4.4%	-1.8%	+2.6%	+5.1%	+1.8%	+8.5%	-12.9%	-46.6%	+1.1%	+1.1%	+5.0%	+2.3%	+1.5%	+2.5%	-13.9%	-0.5%	+2.0%	+1.8%	+1.0%	+0.8%	+1.0%	+0.9%	+2.7%	+1.2%	+0.2%	-6.9%	+1.9%	+0.4%

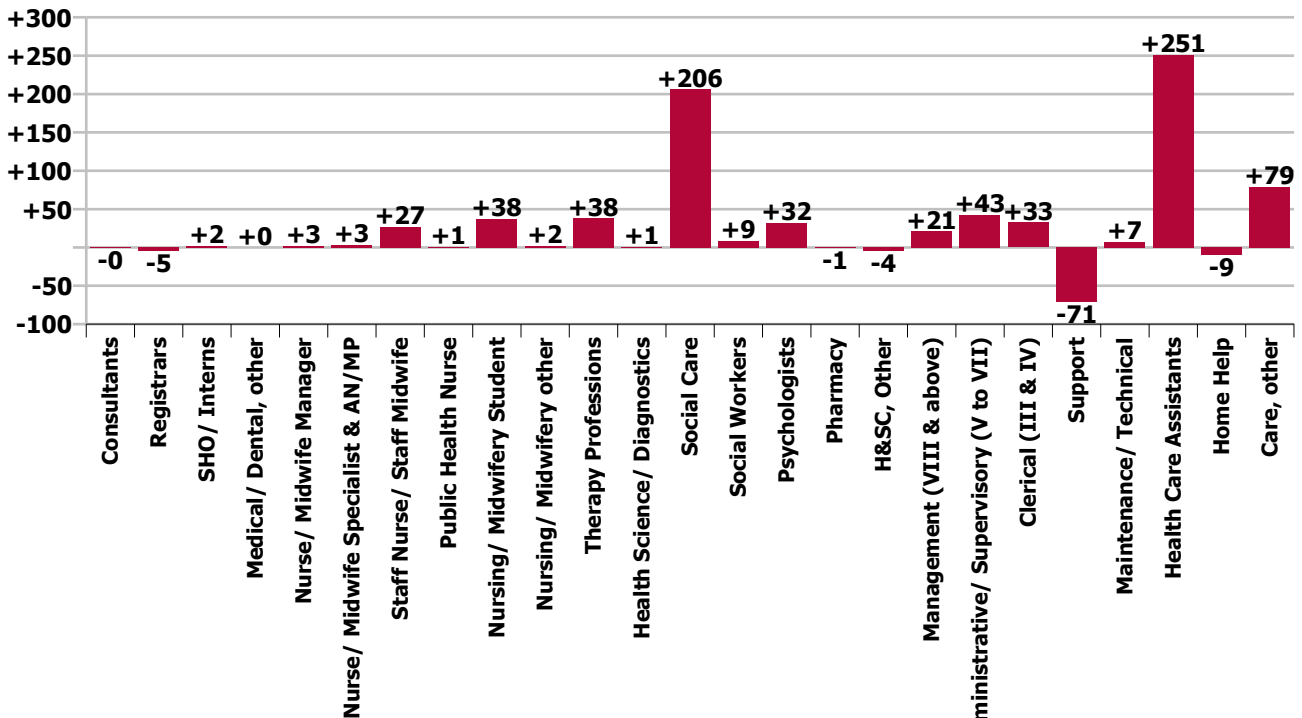
Year-on-year Summary

WTE change since Nov 19	% change since Nov 19	overall	Consultants	Registrars	SHO/ Interns	Medical/ Dental, other	Medical & Dental	Nurse/ Midwife Manager	Nurse/ Midwife Specialist & AN/MP	Staff Nurse/ Staff Midwife	Public Health Nurse	Nursing/ Midwifery Student	Nursing/ Midwifery other	Nursing & Midwifery	Therapy Professions	Health Science/ Diagnostics	Social Care	Social Workers	Psychologists	Pharmacy	H&SC, Other	Health & Social Care Professionals	Management (VIII & above)	Administrativ e/ Supervisory (V to VII)	Clerical (III & IV)	Management & Administrativ e	Support	Maintenance/ Technical	General Support	Health Care Assistants	Home Help	Care, other	Patient & Client Care
Overall	+3.9%	+704	-0	-5	+2	+0	-3	+3	+3	+27	+1	+38	+2	+73	+38	+1	+206	+9	+32	-1	-4	+281	+21	+43	+33	+96	-71	+7	-64	+251	-9	+79	+321
CHO 1	+4.2%	+63				+0	+0	+5	+2	+3		+13	+0	+23	+0		+2	+4	+6		-3	+9	+1	+8	+3	+12	+1	-0	+1	+11	+1	+6	+18
CHO 2	+1.0%	+14						+2	-0	-5		+1		-2	-6		+16	-1	-1		+0	+8	+1	+2	+1	+4	-4	-0	-4	+3		+5	+9
CHO 3	+6.0%	+108	+0				+0	-2	-1	+20		+1		+19	+8	+2	+30	-1	+4	+7	-0	+44	+1	+5	+0	+7	+0	+4	+4	+28		+6	+34
CHO 4	+4.5%	+109	+1				+1	-1	+1	-7		+12	-1	+5	-6		+16	-1	+2		+2	+12	-1	+4	+5	+9	+4	+3	+6	+60		+15	+76
CHO 5	+3.6%	+54	-0				-0	+2		+1	+1	+2		+5	+4		-9	+3	+7		-2	+4	+2	+5	+2	+8	-6	-0	-6	+38	-9	+14	+43
CHO 6	+3.5%	+42					-2			+0				-2	-3		+30	-2	+1		-0	+25		+2	+3	+5	-4		-4	+9		+9	+18
CHO 7	+4.6%	+137		+0	-0		+0	-7	-1	+9			+1	+2	+21		+32	+2	+4	-1		+58	+12	+6	+12	+30	-11	+3	-8	+39	-3	+18	+55
CHO 8	+2.6%	+55		-1			-1	-1	-0	+7	-0	+5	+0	+11	+10		+20	-0	-1		-0	+29	+3	-2	+3	+5	-2	-2	-4	+11	+1	+3	+15
CHO 9	+3.8%	+121	-1	-4	+2		-3	+7	+2	-3		+4	+1	+11	+9	-1	+70	+6	+10		-1	+93	+2	+11	+3	+16	-50	+1	-49	+50		+3	+53
other Community Services	+20.2%	+1																						+1		+1							
		+3.9%	-1.3%	-36.7%	+27.7%	+0.1%	-5.2%	+0.3%	+5.6%	+1.1%	+9.1%	+173.8%	+8.7%	+2.1%	+5.0%	+4.7%	+8.0%	+4.0%	+16.0%	-12.2%	-5.0%	+7.3%	+11.5%	+8.9%	+5.0%	+7.3%	-9.5%	+5.7%	-7.3%	+3.7%	-8.8%	+4.9%	+3.8%

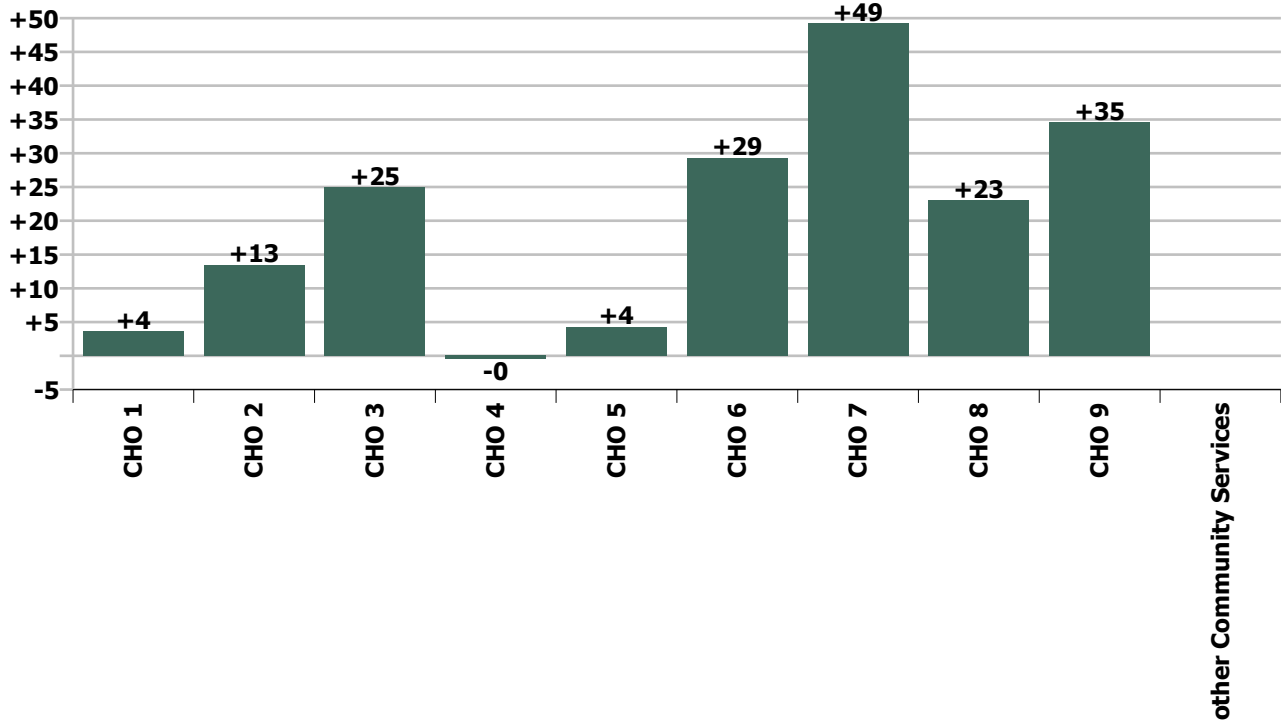
Staff Group change since: Oct 2020



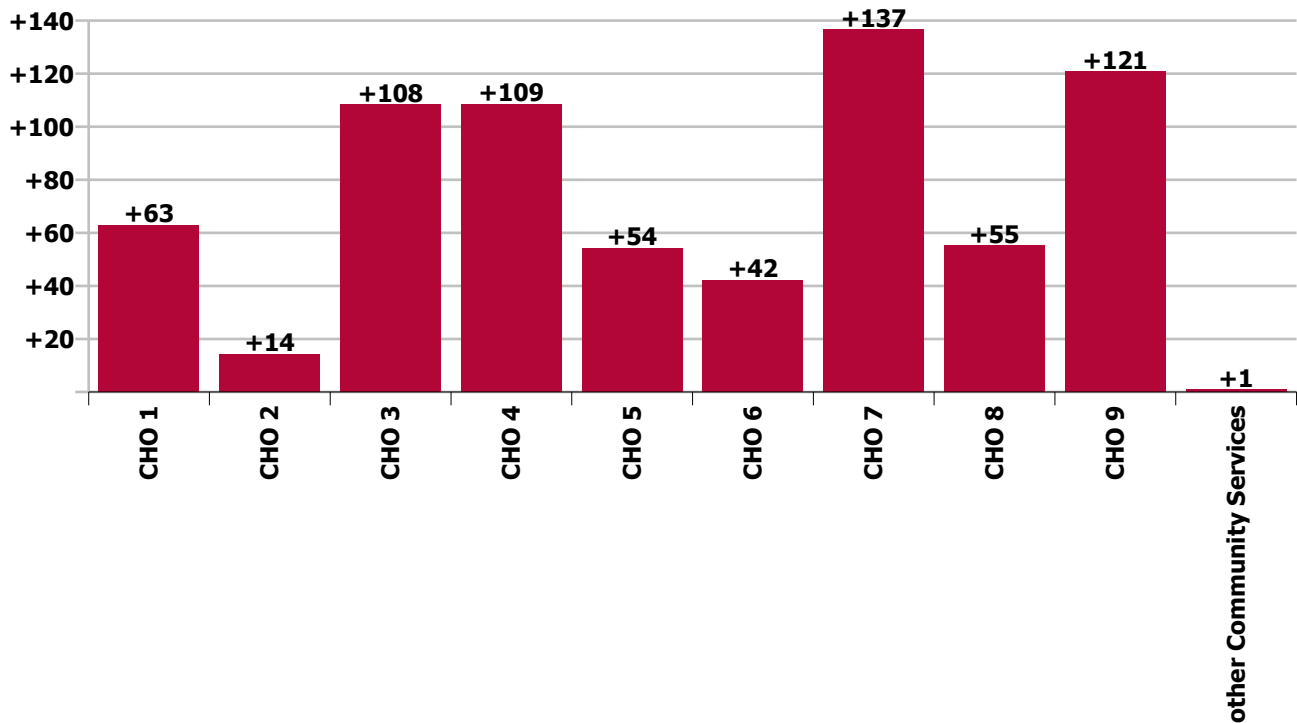
Staff Group change since: Nov 2019



CHO change since: Oct 2020



CHO change since: Nov 2019



## Longitudinal Employment Levels by Grade Group - Oct 2013 to Nov 2020

Nov 2020 (Oct 2013 figure: 14,880)	WTE Nov 2020	WTE change since Oct 13	WTE change since Dec 15	WTE change since Dec 16	WTE change since Dec 17	WTE change since Dec 18	WTE change since Dec 19	% change since Oct 13	% change since Dec 15	% change since Dec 16	% change since Dec 17	% change since Dec 18	% change since Dec 19
<b>Overall</b>	<b>18,873</b>	<b>+3,992</b>	<b>+3,158</b>	<b>+2,119</b>	<b>+1,476</b>	<b>+1,054</b>	<b>+570</b>	<b>+26.8%</b>	<b>+20.1%</b>	<b>+12.6%</b>	<b>+8.5%</b>	<b>+5.9%</b>	<b>+3.1%</b>
Consultant Medicine		-2	-2	-2				-100.0%	-100.0%	-100.0%	-100.0%	-100.0%	-100.0%
Consultant Paediatrics	3	+0	-0	-0	-0			+6.6%	-3.5%	-5.0%	-2.9%		
Consultant Psychiatry	21	-8	-0	-1	-2	+3	-0	-28.7%	-1.9%	-2.8%	-10.2%	+14.6%	-1.5%
Consultant Surgery		-0	-0	-0				-100.0%	-100.0%	-100.0%	-100.0%	-100.0%	-100.0%
<b>Consultants</b>	<b>24</b>	<b>-10</b>	<b>-2</b>	<b>-2</b>	<b>-2</b>	<b>+3</b>	<b>-0</b>	<b>-29.3%</b>	<b>-8.5%</b>	<b>-9.4%</b>	<b>-9.3%</b>	<b>+12.5%</b>	<b>-1.3%</b>
Registrar	3	-5	-3	-3	-3	-2	-4	-63.8%	-50.5%	-50.5%	-50.5%	-44.2%	-57.6%
Senior Registrar	3			+1		+1	+1			+50.0%		+50.0%	+50.0%
Specialist Registrar	2				-2	+1	-2				-50.0%	+100.0%	-50.0%
<b>Registrars</b>	<b>8</b>	<b>-5</b>	<b>-3</b>	<b>-2</b>	<b>-5</b>	<b>-0</b>	<b>-5</b>	<b>-39.7%</b>	<b>-27.5%</b>	<b>-20.3%</b>	<b>-38.7%</b>	<b>-4.2%</b>	<b>-38.7%</b>
<b>SHO/ Interns</b>	<b>9</b>	<b>+1</b>	<b>+4</b>	<b>+3</b>	<b>+2</b>	<b>+2</b>	<b>+2</b>	<b>+16.7%</b>	<b>+77.2%</b>	<b>+47.7%</b>	<b>+26.6%</b>	<b>+27.5%</b>	<b>+27.3%</b>
Dentists			-1					-100.0%	-100.0%	-100.0%	-100.0%	-100.0%	-100.0%
Other Medical	14	-3	-1	-0	+0	+0	+0	-16.1%	-6.2%	-3.2%	+0.9%	+1.8%	+0.1%
<b>Medical/ Dental, other</b>	<b>14</b>	<b>-3</b>	<b>-1</b>	<b>-0</b>	<b>+0</b>	<b>+0</b>	<b>+0</b>	<b>-16.1%</b>	<b>-9.3%</b>	<b>-3.2%</b>	<b>+0.9%</b>	<b>+1.8%</b>	<b>+0.1%</b>
<b>Medical &amp; Dental</b>	<b>55</b>	<b>-16</b>	<b>-3</b>	<b>-2</b>	<b>-5</b>	<b>+4</b>	<b>-3</b>	<b>-23.1%</b>	<b>-4.9%</b>	<b>-3.7%</b>	<b>-9.0%</b>	<b>+8.8%</b>	<b>-5.9%</b>
Clinical Nurse/ Midwife Manager	813	+23	+15	+2	+5	+5	+3	+2.9%	+1.9%	+0.2%	+0.6%	+0.6%	+0.3%
Director Nursing/Midwifery, Assistant	42	+3	+5	-0	+5	+4	+1	+7.2%	+14.9%	-0.4%	+13.6%	+10.9%	+3.3%
Director of Nursing/Midwifery	40	-2	-7	-4	-5	+2	-2	-3.9%	-14.8%	-8.4%	-12.1%	+5.4%	-5.1%
<b>Nurse/ Midwife Manager</b>	<b>896</b>	<b>+25</b>	<b>+14</b>	<b>-2</b>	<b>+4</b>	<b>+11</b>	<b>+2</b>	<b>+2.8%</b>	<b>+1.5%</b>	<b>-0.2%</b>	<b>+0.5%</b>	<b>+1.3%</b>	<b>+0.2%</b>
Advanced Nurse/ Midwife Practitioner	8	+7	+7	+7	+6	+6	+6	+700.0%	+700.0%	+700.0%	+300.0%	+300.0%	+300.0%
Clinical Nurse/ Midwife Specialist	57	-24	-16	-14	-11	-9	-3	-29.4%	-22.0%	-19.2%	-15.7%	-13.6%	-4.4%
<b>Nurse/ Midwife Specialist &amp; AN/MP</b>	<b>65</b>	<b>-17</b>	<b>-9</b>	<b>-7</b>	<b>-5</b>	<b>-3</b>	<b>+3</b>	<b>-20.6%</b>	<b>-12.3%</b>	<b>-9.2%</b>	<b>-6.6%</b>	<b>-4.4%</b>	<b>+5.4%</b>
Graduate Nursing/ Midwifery		-10	-11					-100.0%	-100.0%	-100.0%	-100.0%	-100.0%	-100.0%
Staff Nurse [Intellectual Disability]	1,659	-96	-121	-66	-44	-25	+62	-5.5%	-6.8%	-3.8%	-2.6%	-1.5%	+3.9%
Staff Nurse [Psychiatric]	55	-90	-51	-30	-16	-16	-29	-62.2%	-48.0%	-35.3%	-22.2%	-22.6%	-34.3%
Staff Nurses [General/ Children's]	862	-156	-34	-71	-62	-6	-29	-15.3%	-3.8%	-7.6%	-6.7%	-0.7%	-3.3%
<b>Staff Nurse/ Staff Midwife</b>	<b>2,576</b>	<b>-352</b>	<b>-216</b>	<b>-167</b>	<b>-121</b>	<b>-47</b>	<b>+4</b>	<b>-12.0%</b>	<b>-7.7%</b>	<b>-6.1%</b>	<b>-4.5%</b>	<b>-1.8%</b>	<b>+0.2%</b>
<b>Public Health Nurse</b>	<b>7</b>	<b>-1</b>	<b>-1</b>	<b>+0</b>	<b>+1</b>	<b>-0</b>	<b>+0</b>	<b>-7.4%</b>	<b>-9.0%</b>	<b>+1.5%</b>	<b>+8.2%</b>	<b>-1.5%</b>	<b>+5.3%</b>
Pre-registration Nurse/ Midwife Intern	4	-18	-11	-8	-8	-31	-25	-83.3%	-74.9%	-70.1%	-69.6%	-89.7%	-87.3%
Pre-registration Nurse Intern (COVID-19)	41	+41	+41	+41	+41	+41	+41	-100.0%	-100.0%	-100.0%	-100.0%	-100.0%	-100.0%
Post-registration Nurse/ Midwife Student	2	+2	+2	+2	+2	+2	+2	-100.0%	-100.0%	-100.0%	-100.0%	-100.0%	-100.0%
Nursing/ Midwifery awaiting registration	13	+13	+13	+13	+13	+13	-1	-100.0%	-100.0%	-100.0%	-100.0%	-100.0%	-6.1%
<b>Nursing/ Midwifery Student</b>	<b>59</b>	<b>+38</b>	<b>+45</b>	<b>+47</b>	<b>+48</b>	<b>+25</b>	<b>+17</b>	<b>+175.5%</b>	<b>+315.5%</b>	<b>+394.5%</b>	<b>+403.3%</b>	<b>+70.4%</b>	<b>+41.0%</b>
Nursing Education/Clinical	23	-2	+3	+2	+2	+2	+2	-7.1%	+12.7%	+8.2%	+9.0%	+8.7%	+8.6%
Other Nursing/ Midwifery	1	-7	-5	-4	-4			-87.1%	-84.5%	-80.0%	-80.0%		
<b>Nursing/ Midwifery other</b>	<b>24</b>	<b>-9</b>	<b>-3</b>	<b>-2</b>	<b>-2</b>	<b>+2</b>	<b>+2</b>	<b>-26.2%</b>	<b>-10.7%</b>	<b>-8.6%</b>	<b>-8.0%</b>	<b>+8.3%</b>	<b>+8.2%</b>
<b>Nursing &amp; Midwifery</b>	<b>3,627</b>	<b>-316</b>	<b>-170</b>	<b>-130</b>	<b>-75</b>	<b>-13</b>	<b>+29</b>	<b>-8.0%</b>	<b>-4.5%</b>	<b>-3.5%</b>	<b>-2.0%</b>	<b>-0.3%</b>	<b>+0.8%</b>
Dietitians	17	-2	+5	+4	+5	+3	-2	-9.9%	+43.1%	+28.1%	+41.4%	+22.9%	-8.7%



Nov 2020 (Oct 2013 figure: 14,880)	WTE Nov 2020	WTE change since Oct 13	WTE change since Dec 15	WTE change since Dec 16	WTE change since Dec 17	WTE change since Dec 18	WTE change since Dec 19	% change since Oct 13	% change since Dec 15	% change since Dec 16	% change since Dec 17	% change since Dec 18	% change since Dec 19
<b>Overall</b>	<b>18,873</b>	<b>+3,992</b>	<b>+3,158</b>	<b>+2,119</b>	<b>+1,476</b>	<b>+1,054</b>	<b>+570</b>	<b>+26.8%</b>	<b>+20.1%</b>	<b>+12.6%</b>	<b>+8.5%</b>	<b>+5.9%</b>	<b>+3.1%</b>
Occupational Therapists	276	+94	+74	+24	+27	+35	+12	+51.9%	+36.8%	+9.7%	+10.9%	+14.4%	+4.4%
Physiotherapists	194	+45	+28	+9	+9	+13	+5	+30.0%	+17.2%	+5.0%	+5.1%	+7.3%	+2.6%
Podiatrists & Chiropodists		-0	-0	-0	-0			-100.0%	-100.0%	-100.0%	-100.0%	-100.0%	-100.0%
Speech & Language Therapists	307	+129	+94	+37	+25	+28	+15	+72.3%	+44.2%	+13.5%	+8.8%	+10.2%	+5.0%
<b>Therapy Professions</b>	<b>794</b>	<b>+266</b>	<b>+202</b>	<b>+74</b>	<b>+66</b>	<b>+79</b>	<b>+29</b>	<b>+50.4%</b>	<b>+34.1%</b>	<b>+10.3%</b>	<b>+9.1%</b>	<b>+11.1%</b>	<b>+3.8%</b>
Audiology		-7	-14	-13	-18			-100.0%	-100.0%	-100.0%	-100.0%	-100.0%	-100.0%
Clinical Engineering	14	-4	-4	-4	-4	+2	+1	-22.1%	-22.9%	-23.8%	-22.5%	+16.2%	+7.3%
Clinical Measurement	2	+1	+1	+1	+1	+1	+1	+100.0%	+100.0%	+100.0%	+100.0%	+100.0%	+100.0%
Medical Laboratory	4	+1	+1	+1	+1			+33.3%	+33.3%	+33.3%	+33.3%		
Phlebotomists						-1	-1	-100.0%	-100.0%	-100.0%	-100.0%	-100.0%	-100.0%
Radiographers	1	-0						-3.8%					
<b>Health Science/ Diagnostics</b>	<b>21</b>	<b>-9</b>	<b>-16</b>	<b>-15</b>	<b>-20</b>	<b>+2</b>	<b>+1</b>	<b>-29.1%</b>	<b>-43.4%</b>	<b>-41.8%</b>	<b>-48.7%</b>	<b>+10.3%</b>	<b>+4.7%</b>
<b>Social Care</b>	<b>2,781</b>	<b>+1,021</b>	<b>+841</b>	<b>+589</b>	<b>+435</b>	<b>+292</b>	<b>+186</b>	<b>+58.0%</b>	<b>+43.4%</b>	<b>+26.9%</b>	<b>+18.5%</b>	<b>+11.7%</b>	<b>+7.2%</b>
<b>Social Workers</b>	<b>227</b>	<b>+46</b>	<b>+37</b>	<b>+11</b>	<b>+6</b>	<b>+7</b>	<b>+8</b>	<b>+25.6%</b>	<b>+19.8%</b>	<b>+5.1%</b>	<b>+2.7%</b>	<b>+3.3%</b>	<b>+3.6%</b>
<b>Psychologists</b>	<b>233</b>	<b>+67</b>	<b>+41</b>	<b>+23</b>	<b>+9</b>	<b>+26</b>	<b>+29</b>	<b>+40.5%</b>	<b>+21.6%</b>	<b>+11.0%</b>	<b>+4.2%</b>	<b>+12.8%</b>	<b>+14.2%</b>
<b>Pharmacy</b>	<b>6</b>	<b>+0</b>	<b>-0</b>	<b>-0</b>	<b>-0</b>	<b>-1</b>	<b>-1</b>	<b>+3.1%</b>	<b>-3.6%</b>	<b>-3.6%</b>	<b>-3.0%</b>	<b>-15.6%</b>	<b>-12.9%</b>
Counsellor Therapists	20	+8	+4	+3	+1	+3	+1	+59.6%	+22.0%	+20.5%	+4.5%	+14.3%	+7.4%
HSCP Trainees/ Students		-2	-3	-2	-1			-100.0%	-100.0%	-100.0%	-100.0%	-100.0%	-100.0%
Other Health & Social Care	49	-18	-13	-9	-10	-3	-1	-26.4%	-20.4%	-15.6%	-16.3%	-5.2%	-2.7%
Play Therapists/ Specialists	11	-5	-2	-3	-3	-4	-5	-33.9%	-18.7%	-21.8%	-19.0%	-26.8%	-30.9%
<b>H&amp;SC, Other</b>	<b>80</b>	<b>-18</b>	<b>-15</b>	<b>-11</b>	<b>-12</b>	<b>-4</b>	<b>-5</b>	<b>-18.0%</b>	<b>-15.4%</b>	<b>-12.1%</b>	<b>-12.8%</b>	<b>-4.8%</b>	<b>-5.6%</b>
<b>Health &amp; Social Care Professionals</b>	<b>4,141</b>	<b>+1,374</b>	<b>+1,091</b>	<b>+671</b>	<b>+484</b>	<b>+402</b>	<b>+247</b>	<b>+49.7%</b>	<b>+35.8%</b>	<b>+19.3%</b>	<b>+13.2%</b>	<b>+10.7%</b>	<b>+6.3%</b>
Executive Management	36	+10	+8	+7	-2	+4	+5	+38.6%	+28.5%	+24.1%	-5.3%	+13.1%	+16.9%
Senior Management (VIII & GM)	168	+53	+37	+30	+27	+23	+19	+46.5%	+28.4%	+21.9%	+19.0%	+16.0%	+12.6%
<b>Management (VIII &amp; above)</b>	<b>204</b>	<b>+63</b>	<b>+45</b>	<b>+37</b>	<b>+25</b>	<b>+27</b>	<b>+24</b>	<b>+45.0%</b>	<b>+28.4%</b>	<b>+22.3%</b>	<b>+13.9%</b>	<b>+15.5%</b>	<b>+13.3%</b>
Middle Management (V-VII)	503	+183	+160	+124	+111	+75	+39	+57.1%	+46.5%	+32.6%	+28.2%	+17.6%	+8.4%
Other Administrative	16	-1	+1	+2	-0		+1	-8.3%	+3.7%	+14.5%	-0.9%		+5.7%
<b>Administrative/ Supervisory (V to VII)</b>	<b>519</b>	<b>+181</b>	<b>+160</b>	<b>+126</b>	<b>+110</b>	<b>+75</b>	<b>+40</b>	<b>+53.7%</b>	<b>+44.6%</b>	<b>+32.0%</b>	<b>+27.0%</b>	<b>+17.0%</b>	<b>+8.3%</b>
<b>Clerical (III &amp; IV)</b>	<b>685</b>	<b>+111</b>	<b>+102</b>	<b>+78</b>	<b>+53</b>	<b>+31</b>	<b>+25</b>	<b>+19.3%</b>	<b>+17.4%</b>	<b>+12.9%</b>	<b>+8.4%</b>	<b>+4.8%</b>	<b>+3.7%</b>
<b>Management &amp; Administrative</b>	<b>1,407</b>	<b>+355</b>	<b>+307</b>	<b>+241</b>	<b>+188</b>	<b>+134</b>	<b>+88</b>	<b>+33.8%</b>	<b>+27.9%</b>	<b>+20.6%</b>	<b>+15.4%</b>	<b>+10.5%</b>	<b>+6.7%</b>
Catering	100	-37	-17	-14	-6	-5	+2	-27.0%	-14.6%	-11.9%	-5.6%	-4.4%	+1.8%
Household Services	409	-209	-140	-99	-58	-43	-11	-33.9%	-25.5%	-19.4%	-12.4%	-9.5%	-2.6%
Other Labs & Associated	1		-0	-0		-0			-16.7%	-6.5%		-3.8%	
Other Support	139	-55	-68	-54	-50	-52	-49	-28.3%	-32.8%	-28.1%	-26.4%	-27.1%	-25.9%
Portering	26	-20	-2	-1	-0	+0	-1	-43.8%	-6.4%	-2.1%	-1.4%	+1.6%	-5.4%
<b>Support</b>	<b>675</b>	<b>-321</b>	<b>-227</b>	<b>-167</b>	<b>-114</b>	<b>-99</b>	<b>-59</b>	<b>-32.3%</b>	<b>-25.1%</b>	<b>-19.9%</b>	<b>-14.5%</b>	<b>-12.8%</b>	<b>-8.1%</b>
Maintenance	121	-9	-6	-4	-10	+1	+5	-6.6%	-4.9%	-3.1%	-7.7%	+0.8%	+4.1%
Technical Services	11	+7	+6	+6	+6	+5	+3	+170.7%	+117.6%	+117.6%	+117.6%	+82.0%	+37.0%
<b>Maintenance/ Technical</b>	<b>132</b>	<b>-2</b>	<b>-0</b>	<b>+2</b>	<b>-4</b>	<b>+6</b>	<b>+8</b>	<b>-1.2%</b>	<b>-0.2%</b>	<b>+1.7%</b>	<b>-3.0%</b>	<b>+4.7%</b>	<b>+6.2%</b>



Nov 2020 (Oct 2013 figure: 14,880)	WTE Nov 2020	WTE change since Oct 13	WTE change since Dec 15	WTE change since Dec 16	WTE change since Dec 17	WTE change since Dec 18	WTE change since Dec 19	% change since Oct 13	% change since Dec 15	% change since Dec 16	% change since Dec 17	% change since Dec 18	% change since Dec 19
<b>Overall</b>	<b>18,873</b>	<b>+3,992</b>	<b>+3,158</b>	<b>+2,119</b>	<b>+1,476</b>	<b>+1,054</b>	<b>+570</b>	<b>+26.8%</b>	<b>+20.1%</b>	<b>+12.6%</b>	<b>+8.5%</b>	<b>+5.9%</b>	<b>+3.1%</b>
<b>General Support</b>	<b>807</b>	<b>-323</b>	<b>-227</b>	<b>-165</b>	<b>-118</b>	<b>-93</b>	<b>-52</b>	<b>-28.6%</b>	<b>-22.0%</b>	<b>-17.0%</b>	<b>-12.8%</b>	<b>-10.3%</b>	<b>-6.0%</b>
HCA, Nurse's Aide, etc.	7,033	+2,604	+1,864	+1,279	+857	+502	+216	+58.8%	+36.1%	+22.2%	+13.9%	+7.7%	+3.2%
Health & Social Care Assistants	9	+0	-1	-1	+0	-2	-0	+1.6%	-10.6%	-12.8%	+2.9%	-14.1%	-2.2%
<b>Health Care Assistants</b>	<b>7,042</b>	<b>+2,604</b>	<b>+1,862</b>	<b>+1,278</b>	<b>+857</b>	<b>+501</b>	<b>+216</b>	<b>+58.7%</b>	<b>+36.0%</b>	<b>+22.2%</b>	<b>+13.9%</b>	<b>+7.7%</b>	<b>+3.2%</b>
<b>Home Help</b>	<b>98</b>	<b>-40</b>	<b>+5</b>	<b>+3</b>	<b>-26</b>	<b>-15</b>	<b>-11</b>	<b>-29.1%</b>	<b>+5.8%</b>	<b>+2.7%</b>	<b>-20.7%</b>	<b>-13.0%</b>	<b>-9.9%</b>
<b>Ambulance Staff</b>		<b>-8</b>						<b>-100.0%</b>	<b>-100.0%</b>	<b>-100.0%</b>	<b>-100.0%</b>	<b>-100.0%</b>	<b>-100.0%</b>
<b>Care, other</b>	<b>1,696</b>	<b>+362</b>	<b>+292</b>	<b>+223</b>	<b>+171</b>	<b>+133</b>	<b>+56</b>	<b>+27.2%</b>	<b>+20.8%</b>	<b>+15.2%</b>	<b>+11.2%</b>	<b>+8.5%</b>	<b>+3.4%</b>
<b>Patient &amp; Client Care</b>	<b>8,836</b>	<b>+2,918</b>	<b>+2,160</b>	<b>+1,504</b>	<b>+1,003</b>	<b>+619</b>	<b>+261</b>	<b>+49.3%</b>	<b>+32.4%</b>	<b>+20.5%</b>	<b>+12.8%</b>	<b>+7.5%</b>	<b>+3.0%</b>

Source: Health Service Personnel Census