

Social Care Disability Services Employment Report: September 2021

Employment by Staff Group

Sep 2021 (Dec 2020 figure: 18,944)	WTE Aug 2021	WTE Sep 2021	WTE change since Aug 21	% change since Aug 21	WTE change since Dec 20	WTE change since Sep 20
Overall	19,346	19,413	+67	+0.3%	+468	+789
Consultants	23	22	-0	-2.0%	-2	-1
Registrars	10	9	-1	-6.4%	+1	+1
SHO/ Interns	8	9	+1	+16.8%	-0	+1
Medical/ Dental, other	14	14				-2
Medical & Dental	55	55	+0	+0.3%	-1	-1
Nurse/ Midwife Manager	905	900	-5	-0.6%	+3	+2
Nurse/ Midwife Specialist & AN/MP	66	68	+2	+3.3%	+4	+4
Staff Nurse/ Staff Midwife	2,570	2,569	-1	-0.1%	-24	+43
Public Health Nurse	10	9	-1	-14.5%	+2	+2
Pre-registration Nurse/ Midwife Intern	84	49.70	-34	-40.6%	+47	+49
Pre-registration Nurse Intern (COVID-19)	1	2.26	+1	+140.4%	-30	-93
Post-registration Nurse/ Midwife Student				-100.0%		-3
Nursing/ Midwifery awaiting registration		12.13	+12	-100.0%	-1	-0
Nursing/ Midwifery Student	85	64	-21	-24.3%	+17	-47
Nursing/ Midwifery other	22	22	-0	-1.3%	-2	-2
Nursing & Midwifery	3,659	3,632	-27	-0.7%	-0	+2
Therapy Professions	809	826	+17	+2.1%	+31	+41
Health Science/ Diagnostics	21	21	+0	+1.2%	+1	+1
Social Care	2,922	2,935	+13	+0.5%	+146	+234
Social Workers	226	231	+5	+2.1%	+3	+13
Psychologists	231	237	+6	+2.6%	+8	+18
Pharmacy	7	7	-0	-2.4%	+1	-0
H&SC, Other	70	71	+1	+1.0%	-5	-11
Health & Social Care Professionals	4,286	4,328	+42	+1.0%	+184	+295
Management (VIII & above)	214	214	+0	+0.1%	+10	+17
Administrative/ Supervisory (V to VII)	559	559	-0	-0.1%	+32	+54
Clerical (III & IV)	701	711	+10	+1.5%	+26	+36
Management & Administrative	1,474	1,484	+10	+0.7%	+68	+106
Support	629	644	+16	+2.5%	-18	-23
Maintenance/ Technical	132	134	+2	+1.4%	+1	+4
General Support	761	778	+17	+2.3%	-17	-19
Health Care Assistants	7,323	7,305	-19	-0.3%	+202	+293
Home Help	88	89	+1	+1.5%	-5	-6
Care, other	1,702	1,742	+41	+2.4%	+37	+118
Patient & Client Care	9,113	9,136	+24	+0.3%	+234	+405

Social Care Disability Services Employment by Administration (HSE / S38): September 2021

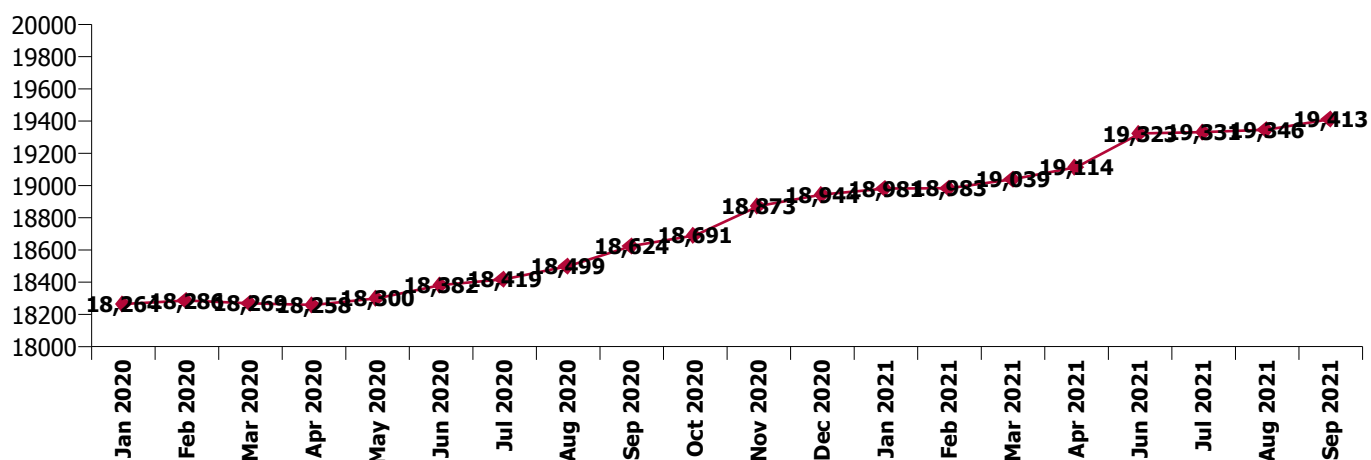
Sep 2021 (Dec 2020 figure: 18,944)	WTE Aug 2021	WTE Sep 2021	WTE change since Aug 21	% change since Aug 21	WTE change since Dec 20	WTE change since Sep 20
Overall	19,346	19,413	+67	+0.3%	+468	+789
HSE	4,114	4,135	+21	+0.5%	+50	+134
Section 38	15,232	15,278	+46	+0.3%	+418	+655

HSE

Sep 2021 (Dec 2020 figure: 4,085)	WTE Aug 2021	WTE Sep 2021	WTE change since Aug 21	% change since Aug 21	WTE change since Dec 20	WTE change since Sep 20
Overall	4,114	4,135	+21	+0.5%	+50	+134
Consultants	8	7.50			-1	-1
Registrars	2	1.99	-0	-0.5%	+1	+1
SHO/ Interns	1	1.00	+0	+5.3%	-1	
Medical/ Dental, other	6	6.23				-2
Medical & Dental	17	17	+0	+0.2%	-1	-1
Nurse/ Midwife Manager	263	262.43	-0	-0.1%	+1	-3
Nurse/ Midwife Specialist & AN/MP	17	17.75	+1	+3.0%	+3	+2
Staff Nurse/ Staff Midwife	796	794.47	-2	-0.2%	+22	+28
Public Health Nurse	10	8.77	-1	-14.5%	+2	+2
Pre-registration Nurse/ Midwife Intern	30	24.08	-6	-20.9%	+22	+23
Pre-registration Nurse Intern (COVID-19)				-100.0%	-9	-41
Nursing/ Midwifery awaiting registration		3.85	+4	-100.0%	-9	-9
Nursing/ Midwifery Student	30	27.93	-3	-8.3%	+4	-27
Nursing/ Midwifery other	5	4.65	-0	-1.9%	-2	-3
Nursing & Midwifery	1,122	1,116	-6	-0.5%	+30	-1
Therapy Professions	377	383.65	+7	+1.8%	+11	+30
Health Science/ Diagnostics	5	4.92	+0	+5.1%	+1	+1
Social Care	97	97.10	-0	-0.2%	-4	+5
Social Workers	64	67.53	+3	+4.8%	+1	+5
Psychologists	91	95.00	+4	+4.0%	+12	+18
H&SC, Other	22	21.36	-1	-3.2%	-4	-4
Health & Social Care Professionals	657	670	+13	+1.9%	+18	+55
Management (VIII & above)	58	60.69	+3	+4.7%	+3	+4
Administrative/ Supervisory (V to VII)	188	189.16	+1	+0.6%	+21	+37
Clerical (III & IV)	205	210.91	+6	+3.1%	+12	+17
Management & Administrative	451	461	+10	+2.2%	+36	+59
Support	71	69.53	-2	-2.2%	-18	-12
Maintenance/ Technical	25	24.77	-0	-0.2%	-1	-0
General Support	96	94	-2	-1.7%	-20	-12
Health Care Assistants	1,523	1,523.75	+1	+0.1%	-33	-2
Home Help	88	89.20	+1	+1.5%	-5	-6
Care, other	162	164.56	+3	+1.7%	+25	+43
Patient & Client Care	1,772	1,778	+5	+0.3%	-13	+34

Section 38

Sep 2021 (Dec 2020 figure: 14,860)	WTE Aug 2021	WTE Sep 2021	WTE change since Aug 21	% change since Aug 21	WTE change since Dec 20	WTE change since Sep 20
Overall	15,232	15,278	+46	+0.3%	+418	+655
Consultants	15	14.68	-0	-3.0%	-1	-1
Registrars	8	7.37	-1	-7.9%	+0	+0
SHO/ Interns	7	7.91	+1	+18.4%	+1	+1
Medical/ Dental, other	8	8.09				
Medical & Dental	38	38	+0	+0.4%	+0	+1
Nurse/ Midwife Manager	642	637.48	-5	-0.7%	+2	+5
Nurse/ Midwife Specialist & AN/MP	49	50.39	+2	+3.4%	+1	+2
Staff Nurse/ Staff Midwife	1,774	1,774.41	+0	+0.0%	-46	+15
Pre-registration Nurse/ Midwife Intern	53	25.62	-28	-51.9%	+26	+26
Pre-registration Nurse Intern (COVID-19)	1	2.26	+1	+140.4%	-21	-51
Post-registration Nurse/ Midwife Student				-100.0%		-3
Nursing/ Midwifery awaiting registration		8.28	+8	-100.0%	+8	+8
Nursing/ Midwifery Student	54	36.16	-18	-33.3%	+13	-20
Nursing/ Midwifery other	18	17.38	-0	-1.2%	+0	+1
Nursing & Midwifery	2,537	2,516	-21	-0.8%	-31	+3
Therapy Professions	432	442.33	+11	+2.5%	+20	+12
Health Science/ Diagnostics	16	16.00				
Social Care	2,825	2,838.13	+14	+0.5%	+150	+228
Social Workers	162	163.26	+2	+1.0%	+2	+8
Psychologists	140	142.46	+2	+1.7%	-4	-0
Pharmacy	7	6.63	-0	-2.4%	+1	-0
H&SC, Other	48	49.67	+1	+2.9%	-1	-7
Health & Social Care Professionals	3,629	3,658	+30	+0.8%	+167	+240
Management (VIII & above)	156	153.57	-3	-1.7%	+8	+12
Administrative/ Supervisory (V to VII)	371	369.69	-2	-0.4%	+11	+17
Clerical (III & IV)	496	499.98	+4	+0.8%	+13	+19
Management & Administrative	1,023	1,023	-0	-0.0%	+32	+47
General Support	665	684	+19	+2.8%	+3	-7
Patient & Client Care	7,340	7,359	+18	+0.2%	+248	+371



Social Care Disability Services Employment by CHO Sep 2021

CHO 1

Sep 2021 (Dec 2020 figure: 1,547)	WTE Aug 2021	WTE Sep 2021	WTE change since Aug 21	% change since Aug 21	WTE change since Dec 20	WTE change since Sep 20
Overall	1,546	1,557	+11	+0.7%	+11	+11
Medical/ Dental, other	3	3				-0
Medical & Dental	3	3				-0
Nurse/ Midwife Manager	112	111	-1	-1.2%	+4	+1
Nurse/ Midwife Specialist & AN/MP	9	10	+1	+5.6%	+1	+0
Staff Nurse/ Staff Midwife	347	349	+2	+0.7%	+21	+28
Public Health Nurse	1		-1	-100.0%		
Public Health Nurse	1		-1	-100.0%		
Pre-registration Nurse/ Midwife Intern	20	16	-3	-15.6%	+13	+16
Pre-registration Nurse Intern (COVID-19)				-100.0%		-26
Nursing/ Midwifery awaiting registration				-100.0%	-11	-11
Nursing/ Midwifery Student	20	16	-3	-15.6%	-1	-20
Nursing/ Midwifery other	2	2	-0	-7.5%	-2	-3
Nursing & Midwifery	491	488	-3	-0.5%	+23	+6
Therapy Professions	43	44	+2	+4.1%	+1	+4
Social Care	10	10	-0	-3.8%	-2	+1
Social Workers	16	18	+2	+11.1%	-0	+1
Psychologists	13	14	+1	+6.8%	+7	+5
H&SC, Other	8	9	+0	+4.7%	-1	-1
Health & Social Care Professionals	91	95	+4	+4.9%	+5	+10
Management (VIII & above)	12	12	+0	+0.7%	-4	-2
Administrative/ Supervisory (V to VII)	41	41	+0	+0.1%	+6	+8
Clerical (III & IV)	50	50	+0	+0.0%	-3	-1
Management & Administrative	103	103	+0	+0.1%	-1	+5
Support	33	33	+0	+0.2%	-16	-16
Maintenance/ Technical	5	5			-1	-1
General Support	38	38	+0	+0.2%	-17	-17
Health Care Assistants	757	764	+6	+0.8%	-11	-4
Home Help	13	14	+1	+4.0%	-0	-2
Care, other	50	53	+2	+4.9%	+12	+13
Patient & Client Care	821	830	+9	+1.1%	+0	+7

CHO 2

Sep 2021 (Dec 2020 figure: 1,516)	WTE Aug 2021	WTE Sep 2021	WTE change since Aug 21	% change since Aug 21	WTE change since Dec 20	WTE change since Sep 20
Overall	1,556	1,540	-15	-1.0%	+25	+42
Consultants	3	3				
Registrars	2	2				
Medical/ Dental, other	1	1				
Medical & Dental	6	6				
Nurse/ Midwife Manager	74	71	-4	-5.0%	-7	-7
Nurse/ Midwife Specialist & AN/MP	6	7	+0	+5.7%	+1	+1
Staff Nurse/ Staff Midwife	161	158	-3	-1.7%	-11	-5
<i>Pre-registration Nurse Intern (COVID-19)</i>				-100.0%		-1
Nursing/ Midwifery Student				-100.0%	-1	-1
Nursing & Midwifery	241	235	-6	-2.5%	-18	-13
Therapy Professions	34	36	+2	+5.0%	+2	+0
Social Care	265	261	-4	-1.5%	+17	+19
Social Workers	27	27	+0	+0.5%	+1	+2
Psychologists	15	15	+0	+2.6%	+1	+0
H&SC, Other	10	12	+1	+12.8%	+0	-3
Health & Social Care Professionals	351	350	-1	-0.1%	+21	+19
Management (VIII & above)	17	18	+1	+5.7%	+2	+1
Administrative/ Supervisory (V to VII)	47	48	+0	+0.8%	+3	+6
Clerical (III & IV)	48	50	+2	+3.3%	-0	+1
Management & Administrative	112	115	+3	+2.6%	+5	+8
Support	37	43	+6	+16.7%	+0	+1
Maintenance/ Technical	13	12	-1	-7.9%	-1	-1
General Support	50	55	+5	+10.3%	-1	+0
Health Care Assistants	665	642	-24	-3.5%	+17	+18
Care, other	130	137	+7	+5.3%	+1	+9
Patient & Client Care	795	778	-17	-2.1%	+18	+27

CHO 3

Sep 2021 (Dec 2020 figure: 1,947)	WTE Aug 2021	WTE Sep 2021	WTE change since Aug 21	% change since Aug 21	WTE change since Dec 20	WTE change since Sep 20
Overall	1,983	1,971	-11	-0.6%	+24	+72
Consultants	1	1	-0	-8.0%	-1	-0
Medical/ Dental, other	1	1				
Medical & Dental	2	2	-0	-4.4%	-1	-0
Nurse/ Midwife Manager	74	73	-1	-1.9%	-2	-5
Nurse/ Midwife Specialist & AN/MP	9	9			-2	-2
Staff Nurse/ Staff Midwife	251	254	+3	+1.3%	-16	+1
Pre-registration Nurse/ Midwife Intern	8	1	-7	-87.5%	-11	+1
Pre-registration Nurse Intern (COVID-19)	0	1	+1	+535.0%	+1	-1
Nursing/ Midwifery Student	8	2	-6	-72.3%	+1	+0
Nursing/ Midwifery other	4	4				
Nursing & Midwifery	346	342	-4	-1.2%	-19	-6
Therapy Professions	79	82	+3	+3.6%	-2	+3
Health Science/ Diagnostics	3	3	+0	+3.5%	+1	+1
Social Care	286	282	-4	-1.3%	-2	+15
Social Workers	18	17	-2	-9.1%	-1	+2
Psychologists	19	19	-1	-2.8%	-2	-2
H&SC, Other	10	11	+0	+0.4%	-1	-2
Health & Social Care Professionals	416	413	-3	-0.7%	-6	+18
Management (VIII & above)	8	8	-0	-0.3%	-0	-0
Administrative/ Supervisory (V to VII)	44	43	-1	-2.5%	-2	-2
Clerical (III & IV)	59	60	+1	+1.7%	+1	+0
Management & Administrative	111	111	-0	-0.1%	-0	-1
Support	53	53	+0	+0.9%	-0	-2
Maintenance/ Technical	20	20	-0	-0.1%	+1	+2
General Support	73	73	+0	+0.6%	+1	+0
Health Care Assistants	842	835	-7	-0.8%	+36	+38
Care, other	193	195	+3	+1.3%	+14	+24
Patient & Client Care	1,035	1,030	-4	-0.4%	+49	+62

CHO 4

Sep 2021 (Dec 2020 figure: 2,556)	WTE Aug 2021	WTE Sep 2021	WTE change since Aug 21	% change since Aug 21	WTE change since Dec 20	WTE change since Sep 20
Overall	2,630	2,620	-10	-0.4%	+64	+108
Consultants	3	3				+1
Medical/ Dental, other	0	0				-1
Medical & Dental	3	3				-0
Nurse/ Midwife Manager	88	90	+2	+2.3%	-1	+1
Nurse/ Midwife Specialist & AN/MP	13	13			-1	
Staff Nurse/ Staff Midwife	297	294	-3	-1.0%	-18	-7
Pre-registration Nurse/ Midwife Intern	10	10			+4	+10
Pre-registration Nurse Intern (COVID-19)				-100.0%		-19
Nursing/ Midwifery awaiting registration				-100.0%	-1	-2
Nursing/ Midwifery Student	10	10			+0	-11
Nursing/ Midwifery other				-100.0%		-1
Nursing & Midwifery	409	408	-1	-0.2%	-19	-17
Therapy Professions	114	115	+0	+0.3%	+11	+8
Social Care	246	244	-2	-0.9%	+6	+15
Social Workers	26	28	+1	+4.3%	+1	+2
Psychologists	35	36	+1	+2.1%	-0	+0
H&SC, Other	8	8	-0	-0.1%	-2	-2
Health & Social Care Professionals	431	431	-0	-0.0%	+16	+22
Management (VIII & above)	22	21	-1	-3.4%	-1	-1
Administrative/ Supervisory (V to VII)	55	55	-0	-0.1%	-2	-3
Clerical (III & IV)	90	91	+0	+0.1%	+1	+0
Management & Administrative	168	167	-1	-0.4%	-2	-4
Support	142	143	+1	+0.6%	+5	+6
Maintenance/ Technical	12	12	+0	+0.0%		+2
General Support	154	155	+1	+0.6%	+5	+8
Health Care Assistants	1,137	1,122	-15	-1.3%	+64	+83
Care, other	328	334	+6	+1.8%	+2	+16
Patient & Client Care	1,465	1,456	-9	-0.6%	+65	+99

CHO 5

Sep 2021 (Dec 2020 figure: 1,563)	WTE Aug 2021	WTE Sep 2021	WTE change since Aug 21	% change since Aug 21	WTE change since Dec 20	WTE change since Sep 20
Overall	1,610	1,649	+38	+2.4%	+86	+144
Consultants	1	1			+0	+0
Medical/ Dental, other				-100.0%		-1
Medical & Dental	1	1			+0	-1
Nurse/ Midwife Manager	73	72	-1	-1.3%	+2	+0
Nurse/ Midwife Specialist & AN/MP	3	3			+1	+1
Staff Nurse/ Staff Midwife	164	162	-2	-1.0%	-6	+4
Public Health Nurse	8	8	-0	-5.9%	+2	+2
Pre-registration Nurse/ Midwife Intern	9	7	-2	-23.5%	+7	+7
Pre-registration Nurse Intern (COVID-19)				-100.0%		-6
Post-registration Nurse/ Midwife Student				-100.0%		-3
Nursing/ Midwifery awaiting registration		1	+1	-100.0%	-1	+1
Nursing/ Midwifery Student	9	8	-2	-18.2%	+7	-1
Nursing Education/Clinical	1	1	-0	-5.9%	+1	+1
Nursing/ Midwifery other	1	1	-0	-5.9%	+1	+1
Nursing & Midwifery	258	253	-5	-1.9%	+6	+7
Therapy Professions	68	70	+2	+2.8%	+5	+15
Social Care	142	147	+5	+3.6%	+4	-2
Social Workers	25	26	+2	+6.3%	+2	+4
Psychologists	22	22	-0	-0.8%	+3	+9
H&SC, Other	6	6	-0	-0.0%	+1	-1
Health & Social Care Professionals	262	271	+8	+3.2%	+14	+26
Management (VIII & above)	15	15			+2	+3
Administrative/ Supervisory (V to VII)	54	54	+0	+0.3%	+13	+17
Clerical (III & IV)	63	65	+2	+3.1%	+3	+7
Management & Administrative	131	133	+2	+1.6%	+18	+27
Support	10	11	+1	+9.3%	-1	-2
Maintenance/ Technical	7	9	+2	+27.7%	+2	+2
General Support	17	20	+3	+17.2%	+1	-0
Health Care Assistants	746	763	+17	+2.3%	+31	+57
Home Help	37	37	+0	+0.6%	-3	-2
Care, other	158	171	+13	+7.9%	+18	+31
Patient & Client Care	941	970	+30	+3.2%	+46	+86

CHO 6

Sep 2021 (Dec 2020 figure: 1,217)	WTE Aug 2021	WTE Sep 2021	WTE change since Aug 21	% change since Aug 21	WTE change since Dec 20	WTE change since Sep 20
Overall	1,227	1,230	+3	+0.2%	+13	+41
Consultants	3	3				
SHO/ Interns	1	1	+0	+5.3%	+1	+1
Medical/ Dental, other	1	1				
Medical & Dental	5	5	+0	+1.0%	+1	+1
Nurse/ Midwife Manager	45	43	-2	-4.1%	+0	+1
Staff Nurse/ Staff Midwife	138	142	+3	+2.5%	-1	+1
Nursing & Midwifery	184	185	+2	+0.8%	-1	+2
Therapy Professions	44	40	-4	-9.9%	-3	-1
Social Care	378	382	+3	+0.9%	+21	+40
Social Workers	10	10	-1	-6.0%	-0	+1
Psychologists	13	14	+1	+8.5%	+0	-2
H&SC, Other	1	1	-0	-1.9%	-0	-0
Health & Social Care Professionals	446	446	-1	-0.1%	+18	+37
Management (VIII & above)	33	31	-2	-6.2%	+1	-0
Administrative/ Supervisory (V to VII)	55	56	+1	+1.4%	+2	+2
Clerical (III & IV)	52	53	+1	+2.0%	-3	-5
Management & Administrative	140	140	-0	-0.2%	+0	-3
Support	22	22	-0	-0.9%	-4	-7
Maintenance/ Technical	6	7	+1	+16.7%	+2	+1
General Support	28	29	+1	+2.8%	-2	-6
Health Care Assistants	185	184	-1	-0.6%	+0	+4
Care, other	239	241	+2	+0.9%	-4	+6
Patient & Client Care	424	425	+1	+0.3%	-3	+10

CHO 7

Sep 2021 (Dec 2020 figure: 3,103)	WTE Aug 2021	WTE Sep 2021	WTE change since Aug 21	% change since Aug 21	WTE change since Dec 20	WTE change since Sep 20
Overall	3,199	3,240	+42	+1.3%	+137	+172
Consultants	0	0			-0	-0
Registrars	3	2	-1	-21.0%	-1	-1
SHO/ Interns	7	8	+1	+18.4%	+1	+1
Medical/ Dental, other	1	1				
Medical & Dental	11	12	+1	+5.4%	+0	+0
Nurse/ Midwife Manager	129	130	+1	+0.8%	+12	+7
Nurse/ Midwife Specialist & AN/MP	4	4				-1
Staff Nurse/ Staff Midwife	389	394	+5	+1.4%	+16	+15
Pre-registration Nurse/ Midwife Intern	8	1	-7	-93.3%	+1	+1
Pre-registration Nurse Intern (COVID-19)				-100.0%		-11
Nursing/ Midwifery awaiting registration		8	+8	-100.0%	+8	+8
Nursing/ Midwifery Student	8	9	+1	+13.3%	+9	-3
Nursing/ Midwifery other	3	3			+1	+1
Nursing & Midwifery	532	540	+7	+1.4%	+38	+20
Therapy Professions	144	148	+4	+2.5%	+9	+3
Health Science/ Diagnostics	2	2			-1	-1
Social Care	411	421	+10	+2.3%	+32	+51
Social Workers	33	34	+0	+0.8%	+2	-0
Psychologists	32	32	+1	+2.2%	+0	+2
Pharmacy	5	5	-0	-3.3%	+1	-0
H&SC, Other	3	2	-1	-40.0%		
Health & Social Care Professionals	629	642	+13	+2.1%	+43	+55
Management (VIII & above)	46	46	+1	+1.3%	+4	+9
Administrative/ Supervisory (V to VII)	93	92	-0	-0.4%	+0	+6
Clerical (III & IV)	106	103	-3	-2.8%	+2	+7
Management & Administrative	244	242	-3	-1.2%	+6	+22
Support	149	153	+3	+2.3%	-3	-5
Maintenance/ Technical	33	33	-0	-0.5%	+0	+1
General Support	183	186	+3	+1.8%	-2	-4
Health Care Assistants	1,190	1,201	+11	+0.9%	+54	+62
Home Help	17	17	+0	+2.2%	+0	-0
Care, other	392	401	+9	+2.4%	-2	+16
Patient & Client Care	1,599	1,619	+20	+1.3%	+53	+78

CHO 8

Sep 2021 (Dec 2020 figure: 2,205)	WTE Aug 2021	WTE Sep 2021	WTE change since Aug 21	% change since Aug 21	WTE change since Dec 20	WTE change since Sep 20
Overall	2,273	2,263	-10	-0.4%	+57	+99
Consultants				-100.0%	-1	-1
Registrars	1	1				
Medical/ Dental, other	1	1				
Medical & Dental	2	2			-1	-1
Nurse/ Midwife Manager	116	115	-1	-0.5%	-4	-0
Nurse/ Midwife Specialist & AN/MP	6	6	+0	+0.2%	+0	-0
Staff Nurse/ Staff Midwife	319	311	-8	-2.5%	-1	+5
Public Health Nurse	1	1			-0	
Pre-registration Nurse/ Midwife Intern	11	9	-2	-21.4%	+9	+9
Pre-registration Nurse Intern (COVID-19)	1	1	+0	+33.8%	+1	-17
Nursing/ Midwifery awaiting registration		0	+0	-100.0%	+0	+0
Nursing/ Midwifery Student	12	10	-2	-15.7%	+6	-8
Nursing/ Midwifery other	7	7	-0	-3.0%	+0	+2
Nursing & Midwifery	461	450	-11	-2.3%	+1	-2
Therapy Professions	90	92	+1	+1.3%	-6	-2
Health Science/ Diagnostics	2	2	+0	+7.7%	-0	-0
Social Care	387	389	+2	+0.5%	+9	+14
Social Workers	25	26	+1	+2.8%	+2	+2
Psychologists	25	25	-0	-0.9%	+2	+5
H&SC, Other	7	6	-0	-4.1%	+0	-0
Health & Social Care Professionals	536	540	+3	+0.6%	+7	+19
Management (VIII & above)	15	15	-0	-0.8%	+1	+1
Administrative/ Supervisory (V to VII)	53	53	+0	+0.9%	-3	-2
Clerical (III & IV)	99	93	-7	-6.7%	+5	+5
Management & Administrative	167	161	-6	-3.8%	+3	+4
Support	39	39	-0	-0.9%	-3	-3
Maintenance/ Technical	14	14	-0	-0.0%	+0	-1
General Support	53	53	-0	-0.7%	-2	-4
Health Care Assistants	919	924	+5	+0.5%	+52	+83
Home Help	21	21	+0	+0.9%	-2	-2
Care, other	114	112	-1	-1.1%	-1	+1
Patient & Client Care	1,054	1,058	+4	+0.4%	+49	+82

CHO 9

Sep 2021 (Dec 2020 figure: 3,285)	WTE Aug 2021	WTE Sep 2021	WTE change since Aug 21	% change since Aug 21	WTE change since Dec 20	WTE change since Sep 20
Overall	3,317	3,336	+19	+0.6%	+52	+99
Consultants	11	11	-0	-3.3%	-0	-0
Registrars	4	4	-0	-0.2%	+2	+2
SHO/ Interns				-100.0%	-2	-1
Medical/ Dental, other	6	6				
Medical & Dental	21	21	-0	-1.8%	-0	+1
Nurse/ Midwife Manager	193	195	+2	+0.9%	-1	+5
Nurse/ Midwife Specialist & AN/MP	14	16	+1	+9.1%	+4	+5
Staff Nurse/ Staff Midwife	504	504	-0	-0.0%	-8	+1
Pre-registration Nurse/ Midwife Intern	18	6	-12	-68.6%	-2	+5
Pre-registration Nurse Intern (COVID-19)				-100.0%		-12
Nursing/ Midwifery awaiting registration		3	+3	-100.0%	+3	+3
Nursing/ Midwifery Student	18	9	-9	-49.9%	-4	-4
Nursing/ Midwifery other	6	6	+0	+1.8%	-2	-2
Nursing & Midwifery	736	730	-6	-0.8%	-11	+5
Therapy Professions	192	201	+8	+4.4%	+14	+11
Health Science/ Diagnostics	14	14			+1	+1
Social Care	797	801	+4	+0.5%	+61	+80
Social Workers	45	46	+1	+3.0%	-4	-0
Psychologists	57	60	+3	+5.6%	-4	-0
Pharmacy	2	2				
H&SC, Other	17	17	+0	+1.4%	-1	-2
Health & Social Care Professionals	1,123	1,141	+17	+1.5%	+67	+90
Management (VIII & above)	46	47	+1	+3.2%	+6	+6
Administrative/ Supervisory (V to VII)	115	114	-1	-0.6%	+14	+21
Clerical (III & IV)	131	146	+14	+10.8%	+19	+21
Management & Administrative	292	306	+15	+5.1%	+39	+48
Support	143	147	+4	+2.9%	+3	+4
Maintenance/ Technical	21	21			-2	-1
General Support	164	168	+4	+2.6%	+1	+3
Health Care Assistants	882	871	-11	-1.3%	-41	-48
Care, other	99	99	+0	+0.4%	-3	+1
Patient & Client Care	981	970	-11	-1.1%	-43	-47

other Community Services

Sep 2021 (Dec 2020 figure: 6)	WTE Aug 2021	WTE Sep 2021	WTE change since Aug 21	% change since Aug 21	WTE change since Dec 20	WTE change since Sep 20
Overall	6	6	-0	-0.2%	-0	-0
Management (VIII & above)	1	1	-0	-1.0%	-0	-0
Administrative/ Supervisory (V to VII)	3	3				
Clerical (III & IV)	2	2			-0	-0
Management & Administrative	6	6	-0	-0.2%	-0	-0

Social Care Disability Services Employment by CHO & Admin : Sep 2021

Sep 2021 (Dec 2020 figure: 18,944)	WTE Aug 2021	WTE Sep 2021	WTE change since Aug 21	% change since Aug 21	WTE change since Dec 20	WTE change since Sep 20
Overall	19,346	19,413	+67	+0.3%	+468	+789
CHO 1	1,546	1,557	+11	+0.7%	+11	+11
Health Service Executive	222	218	-4	-1.7%	-0	+4
Bros. of Charity, West Region	1,334	1,322	-11	-0.9%	+25	+38
Section 38 Voluntary Agencies	1,334	1,322	-11	-0.9%	+25	+38
CHO 2	1,556	1,540	-15	-1.0%	+25	+42
Health Service Executive	140	144	+4	+2.7%	-1	+6
Bros. of Charity, Clare	406	406	-0	-0.1%	+34	+49
Bros. of Charity, Limerick	599	590	-9	-1.5%	-2	+15
Daughters of Charity, Limerick	545	541	-5	-0.9%	-9	-4
Daughters of Charity, Roscrea	293	292	-1	-0.3%	+3	+6
Section 38 Voluntary Agencies	1,843	1,828	-15	-0.8%	+25	+66
CHO 3	1,983	1,971	-11	-0.6%	+24	+72
Health Service Executive	329	329	-1	-0.2%	+15	+26
Bros. of Charity, Southern	814	807	-7	-0.9%	+31	+42
Cope Foundation	1,156	1,152	-5	-0.4%	+5	+31
St. John of God, Kerry	330	333	+3	+0.9%	+13	+9
Section 38 Voluntary Agencies	2,300	2,291	-9	-0.4%	+49	+83
CHO 4	2,630	2,620	-10	-0.4%	+64	+108
Health Service Executive	425	425	+0	+0.1%	+31	+59
Bros. of Charity, Waterford	685	720	+35	+5.1%	+52	+77
Carriglea Cairde Services	217	220	+3	+1.5%	+7	+14
St. Patrick's, Kilkenny	283	283	-0	-0.0%	-4	-6
Section 38 Voluntary Agencies	1,185	1,224	+38	+3.2%	+55	+85
CHO 5	1,610	1,649	+38	+2.4%	+86	+144
Health Service Executive	240	230	-9	-4.0%	-13	-5
Children's Sunshine Home	58	60	+2	+4.2%	+4	+3
St. John of God (IDS)	447	453	+6	+1.4%	-15	-4
Sunbeam House Services	483	487	+4	+0.7%	+37	+47
Section 38 Voluntary Agencies	988	1,000	+12	+1.2%	+27	+46
CHO 6	1,227	1,230	+3	+0.2%	+13	+41
Health Service Executive	128	125	-3	-2.6%	-10	-3
Cheeverstown House	418	422	+5	+1.1%	+28	+33
Kare, Newbridge, Co Kildare	402	415	+13	+3.2%	+38	+51
Peamount Hospital (Newcastle)	536	528	-8	-1.5%	+45	-4
Stewart's Hospital, (Palmerstown)	936	951	+15	+1.6%	+37	+71
St. John of God Liffey Services	779	799	+20	+2.6%	-1	+25
Section 38 Voluntary Agencies	3,070	3,115	+45	+1.5%	+147	+174
CHO 7	3,199	3,240	+42	+1.3%	+137	+172
Health Service Executive	598	596	-2	-0.3%	-15	-5
Muiriosa Foundation, Laois/Offaly	355	358	+2	+0.7%	+37	+48
Muiriosa Foundation, Longford/Westmeath	302	299	-4	-1.2%	+14	+20
Muiriosa Foundation, South Kildare	363	357	-6	-1.7%	+15	+19
St. John of God, Drumcar	654	653	-1	-0.1%	+5	+16

Sep 2021 (Dec 2020 figure: 18,944)	WTE Aug 2021	WTE Sep 2021	WTE change since Aug 21	% change since Aug 21	WTE change since Dec 20	WTE change since Sep 20
Overall	19,346	19,413	+67	+0.3%	+468	+789
Section 38 Voluntary Agencies	1,675	1,667	-8	-0.5%	+72	+103
CHO 8	2,273	2,263	-10	-0.4%	+57	+99
Health Service Executive	481	505	+24	+5.1%	+33	+40
Central Remedial Clinic	296	308	+11	+3.8%	+12	+21
Daughters of Charity, Dublin	1,084	1,070	-15	-1.3%	+6	+18
St. Michael's House, Dublin	1,456	1,454	-2	-0.1%	+1	+21
Section 38 Voluntary Agencies	2,837	2,831	-5	-0.2%	+19	+59
CHO 9	3,317	3,336	+19	+0.6%	+52	+99
other Community Services	6	6	-0	-0.2%	-0	-0

Social Care Disability Services Employment by CHO Sep 2021

Bros. of Charity, Clare

Sep 2021 (Dec 2020 figure: 372)	WTE Aug 2021	WTE Sep 2021	WTE change since Aug 21	% change since Aug 21	WTE change since Dec 20	WTE change since Sep 20
Overall	406	406	-0	-0.1%	+34	+49
Consultants	0	0	-0	-75.0%	-0	-0
Medical & Dental	0	0	-0	-75.0%	-0	-0
Staff Nurse/ Staff Midwife	2	3	+1	+37.4%	+1	+1
<i>Pre-registration Nurse Intern (COVID-19)</i>	0	1	+0	+240.0%	+1	-0
Nursing/ Midwifery Student	0	1	+0	+240.0%	-0	-0
Nursing & Midwifery	2	3	+1	+57.0%	+0	+0
Social Care	88	86	-1	-1.3%	+1	+4
Social Workers	3	3				+1
Psychologists	3	3				
H&SC, Other	3	3			-1	-1
Health & Social Care Professionals	96	95	-1	-1.2%	+0	+4
Management (VIII & above)	1	1				
Administrative/ Supervisory (V to VII)	5	5			+0	+0
Clerical (III & IV)	6	5	-1	-9.0%	+0	+0
Management & Administrative	12	11	-1	-4.3%	+0	+0
Health Care Assistants	260	259	-2	-0.7%	+26	+38
Care, other	36	38	+2	+5.7%	+7	+6
Patient & Client Care	296	297	+0	+0.1%	+33	+44

Sep 2021 (Dec 2020 figure: 592)	WTE Aug 2021	WTE Sep 2021	WTE change since Aug 21	% change since Aug 21	WTE change since Dec 20	WTE change since Sep 20
Overall	599	590	-9	-1.5%	-2	+15
Consultants	1	1			-1	-0
Medical & Dental	1	1			-1	-0
Nurse/ Midwife Manager	27	26	-1	-4.2%	-2	-3
Nurse/ Midwife Specialist & AN/MP	4	3	-1	-25.6%	-1	-1
Staff Nurse/ Staff Midwife	87	86	-1	-1.5%	-12	-5
<i>Pre-registration Nurse Intern (COVID-19)</i>		1	+1	-100.0%	+1	+1
Nursing/ Midwifery Student		1	+1	-100.0%	+1	+1
Nursing & Midwifery	118	115	-3	-2.4%	-15	-8
Therapy Professions	15	15	-0	-1.7%	-0	+1
Social Care	103	100	-3	-2.7%	-4	+0
Social Workers	7	6	-1	-14.0%	+1	+2
Psychologists	6	6	-0	-0.2%		-0
H&SC, Other	1	1	+0	+1.7%	+0	-1
Health & Social Care Professionals	132	127	-4	-3.1%	-4	+2
Management (VIII & above)	2	2				
Administrative/ Supervisory (V to VII)	7	7			+1	+1
Clerical (III & IV)	10	10	+0	+1.4%	-1	-1
Management & Administrative	18	19	+0	+0.8%	+0	+0
Support	7	8	+1	+7.7%	+1	+1
Maintenance/ Technical	2	2				
General Support	9	10	+1	+6.0%	+1	+1
Health Care Assistants	214	212	-2	-0.8%	+8	+7
Care, other	107	106	-1	-0.9%	+7	+13
Patient & Client Care	321	318	-3	-0.8%	+15	+20

Sep 2021 (Dec 2020 figure: 776)	WTE Aug 2021	WTE Sep 2021	WTE change since Aug 21	% change since Aug 21	WTE change since Dec 20	WTE change since Sep 20
Overall	814	807	-7	-0.9%	+31	+42
Nurse/ Midwife Manager	12	13	+2	+13.3%	-2	-2
Nurse/ Midwife Specialist & AN/MP	2	2			-1	-1
Staff Nurse/ Staff Midwife	56	53	-3	-5.8%	-3	-2
Nursing & Midwifery	70	68	-2	-2.5%	-5	-5
Therapy Professions	44	47	+3	+7.1%	+1	-2
Social Care	128	125	-2	-1.7%	+3	-0
Social Workers	17	18	+1	+6.9%	+1	+2
Psychologists	20	21	+1	+2.9%	+0	+0
Health & Social Care Professionals	209	211	+3	+1.3%	+5	+0
Management (VIII & above)	6	5	-1	-13.8%	-3	-2
Administrative/ Supervisory (V to VII)	11	12	+1	+8.2%	+2	+2
Clerical (III & IV)	36	34	-1	-3.4%	-1	-1
Management & Administrative	52	51	-1	-2.0%	-2	-2
Support	12	13	+1	+6.8%	-1	-1
Maintenance/ Technical	3	3				+1
General Support	15	16	+1	+5.7%	-1	+0
Health Care Assistants	269	255	-14	-5.1%	+33	+41
Care, other	200	205	+6	+2.8%	+1	+8
Patient & Client Care	469	460	-8	-1.7%	+34	+49

Sep 2021 (Dec 2020 figure: 668)	WTE Aug 2021	WTE Sep 2021	WTE change since Aug 21	% change since Aug 21	WTE change since Dec 20	WTE change since Sep 20
Overall	685	720	+35	+5.1%	+52	+77
Consultants	1	1			+0	+0
Medical & Dental	1	1			+0	+0
Nurse/ Midwife Manager	24	23	-1	-3.1%	+1	+2
Staff Nurse/ Staff Midwife	43	46	+3	+7.5%	-4	+1
Pre-registration Nurse/ Midwife Intern	6	4	-2	-28.8%	+4	+4
Pre-registration Nurse Intern (COVID-19)				-100.0%		-3
Nursing/ Midwifery Student	6	4	-2	-28.8%	+4	+2
Nursing & Midwifery	73	73	+1	+1.1%	+1	+4
Therapy Professions	2	2			+1	+1
Social Care	73	76	+3	+3.9%	+6	+1
Social Workers	9	9			+1	+1
Psychologists	4	4				
H&SC, Other	4	4			+1	+0
Health & Social Care Professionals	93	96	+3	+3.1%	+8	+4
Management (VIII & above)	5	5				+0
Administrative/ Supervisory (V to VII)	21	18	-3	-13.1%	+2	+3
Clerical (III & IV)	23	26	+3	+13.6%	-1	+1
Management & Administrative	49	49	+0	+0.9%	+1	+4
Support	2	2	-0	-4.5%	+0	-0
Maintenance/ Technical	3	5	+2	+67.8%	+2	+2
General Support	5	6	+2	+42.7%	+2	+2
Health Care Assistants	371	391	+20	+5.5%	+29	+48
Care, other	95	103	+9	+9.1%	+10	+16
Patient & Client Care	466	495	+29	+6.2%	+39	+64

Carriglea Cairde Services

Sep 2021 (Dec 2020 figure: 214)	WTE Aug 2021	WTE Sep 2021	WTE change since Aug 21	% change since Aug 21	WTE change since Dec 20	WTE change since Sep 20
Overall	217	221	+3	+1.5%	+7	+14
Nurse/ Midwife Manager	13	13	+0	+1.3%	+0	+0
Staff Nurse/ Staff Midwife	25	25	-0	-1.9%	-2	-0
<i>Post-registration Nurse/ Midwife Student</i>				-100.0%		-3
Nursing/ Midwifery Student				-100.0%		-3
Nursing & Midwifery	38	38	-0	-0.8%	-2	-3
Social Care	30	30	-0	-1.4%	-0	-2
Health & Social Care Professionals	30	30	-0	-1.4%	-0	-2
Management (VIII & above)	2	2				
Administrative/ Supervisory (V to VII)	3	3				+0
Clerical (III & IV)	6	6	+0	+4.7%	+0	+0
Management & Administrative	11	11	+0	+2.6%	+0	+0
Support	5	6	+1	+11.8%	-1	-1
Maintenance/ Technical	2	2	+0	+1.3%	+1	+1
General Support	8	8	+1	+8.5%	+0	+1
Health Care Assistants	85	83	-2	-2.1%	+3	+10
Care, other	46	51	+5	+10.5%	+6	+8
Patient & Client Care	130	133	+3	+2.3%	+9	+18

Central Remedial Clinic

Sep 2021 (Dec 2020 figure: 296)	WTE Aug 2021	WTE Sep 2021	WTE change since Aug 21	% change since Aug 21	WTE change since Dec 20	WTE change since Sep 20
Overall	296	308	+11	+3.8%	+12	+21
Consultants	1	1	+0	+10.6%	-0	-0
Medical/ Dental, other	0	0				
Medical & Dental	1	1	+0	+6.5%	-0	-0
Nurse/ Midwife Manager	3	4	+1	+30.4%	+2	+2
Nurse/ Midwife Specialist & AN/MP	2	2	+0	+20.0%	+0	+0
Staff Nurse/ Staff Midwife	3	4	+1	+19.5%	-1	-1
Nursing/ Midwifery other	1	1				
Nursing & Midwifery	9	11	+2	+21.4%	+2	+2
Therapy Professions	75	78	+3	+3.3%	-0	+2
Health Science/ Diagnostics	14	14			+1	+1
Social Workers	7	7	+0	+2.8%	-1	-1
Psychologists	11	10	-1	-9.1%	-3	-1
Health & Social Care Professionals	107	109	+2	+1.6%	-3	+1
Management (VIII & above)	7	7				+1
Administrative/ Supervisory (V to VII)	15	16	+0	+2.6%	+0	+0
Clerical (III & IV)	34	40	+6	+18.2%	+6	+7
Management & Administrative	57	63	+7	+11.7%	+7	+9
Support	13	13			+0	-2
Maintenance/ Technical	2	2				+1
General Support	15	15			+0	-1
Health Care Assistants	59	60	+1	+1.5%	+2	+3
Care, other	49	49			+5	+7
Patient & Client Care	108	109	+1	+0.8%	+7	+10

Sep 2021 (Dec 2020 figure: 395)	WTE Aug 2021	WTE Sep 2021	WTE change since Aug 21	% change since Aug 21	WTE change since Dec 20	WTE change since Sep 20
Overall	418	422	+5	+1.1%	+28	+33
Consultants				-100.0%	-0	-0
Medical/ Dental, other	1	1				
Medical & Dental	1	1			-0	-0
Nurse/ Midwife Manager	32	34	+2	+5.0%	+7	+7
Nurse/ Midwife Specialist & AN/MP	2	2				
Staff Nurse/ Staff Midwife	102	103	+1	+1.0%	-3	+1
Nursing & Midwifery	136	138	+3	+1.9%	+4	+8
Therapy Professions	12	12			-1	
Social Care	43	43			+9	+10
Social Workers	5	5			+1	+1
Psychologists	3	3			-2	-2
Pharmacy		1	+1	-100.0%	+0	+0
H&SC, Other	2	2				
Health & Social Care Professionals	65	66	+1	+0.8%	+7	+9
Management (VIII & above)	5	5			+2	+3
Administrative/ Supervisory (V to VII)	15	15			+1	+0
Clerical (III & IV)	15	15			+3	+3
Management & Administrative	35	35			+5	+6
Support	25	27	+2	+5.9%	-0	-0
Maintenance/ Technical	4	4				
General Support	29	30	+2	+5.2%	-0	-0
Health Care Assistants	139	139			+10	+10
Care, other	12	12			+2	+1
Patient & Client Care	151	151			+12	+11

Children's Sunshine Home

Sep 2021 (Dec 2020 figure: 56)	WTE Aug 2021	WTE Sep 2021	WTE change since Aug 21	% change since Aug 21	WTE change since Dec 20	WTE change since Sep 20
Overall	58	60	+2	+4.2%	+4	+3
Nurse/ Midwife Manager	8	8	+0	+2.6%	+0	+0
Staff Nurse/ Staff Midwife	18	21	+3	+16.5%	+3	+3
Nursing & Midwifery	26	29	+3	+12.2%	+3	+3
Therapy Professions	2	1	-1	-52.6%	-0	-1
Social Workers				-100.0%	-1	-1
Health & Social Care Professionals	2	1	-1	-52.6%	-1	-1
Management (VIII & above)	3	3			+1	
Administrative/ Supervisory (V to VII)	4	4				
<i>General Administrative (III & IV)</i>	1	1				
Clerical (III & IV)	1	1				
Management & Administrative	8	8			+1	
Support	3	3				
General Support	3	3				
Health Care Assistants	14	14			+1	+1
Care, other	5	5				
Patient & Client Care	19	19			+1	+1

Sep 2021 (Dec 2020 figure: 1,147)	WTE Aug 2021	WTE Sep 2021	WTE change since Aug 21	% change since Aug 21	WTE change since Dec 20	WTE change since Sep 20
Overall	1,156	1,152	-5	-0.4%	+5	+31
Nurse/ Midwife Manager	46	46	-0	-0.0%	+4	+5
Nurse/ Midwife Specialist & AN/MP	11	11				+1
Staff Nurse/ Staff Midwife	164	164			-13	-2
Pre-registration Nurse/ Midwife Intern	9	9			+3	+9
Pre-registration Nurse Intern (COVID-19)				-100.0%		-19
Nursing/ Midwifery Student	9	9			+1	-10
Nursing/ Midwifery other				-100.0%		-1
Nursing & Midwifery	230	230	-0	-0.0%	-8	-7
Therapy Professions	37	37			-0	
Social Care	43	43				+9
Social Workers	9	9				
Psychologists	11	11				
H&SC, Other	3	3				
Health & Social Care Professionals	102	102			-0	+9
Management (VIII & above)	7	7				
Administrative/ Supervisory (V to VII)	19	19			-4	-4
Clerical (III & IV)	26	26				+0
Management & Administrative	52	52			-4	-3
Support	85	85			+7	+7
Maintenance/ Technical	7	7			+0	+1
General Support	92	92			+7	+8
Health Care Assistants	603	598	-5	-0.8%	+12	+22
Care, other	78	78			-2	+2
Patient & Client Care	681	677	-5	-0.7%	+10	+24

Daughters of Charity, Dublin

Sep 2021 (Dec 2020 figure: 1,063)	WTE Aug 2021	WTE Sep 2021	WTE change since Aug 21	% change since Aug 21	WTE change since Dec 20	WTE change since Sep 20
Overall	1,084	1,070	-15	-1.3%	+6	+18
Consultants	2	2			-0	-0
Senior Registrar	1	1			+1	+1
Registrars	1	1			+1	+1
Medical/ Dental, other	2	2				
Medical & Dental	5	5			+1	+1
Nurse/ Midwife Manager	63	62	-1	-1.3%	-0	+3
Nurse/ Midwife Specialist & AN/MP	12	13	+1	+8.5%	+2	+4
Staff Nurse/ Staff Midwife	180	179	-1	-0.6%	-9	-9
Pre-registration Nurse/ Midwife Intern	11	1	-10	-90.5%	-7	+1
Pre-registration Nurse Intern (COVID-19)				-100.0%		
Nursing/ Midwifery Student	11	1	-10	-90.5%	-9	+1
Nursing/ Midwifery other	3	3			-1	-1
Nursing & Midwifery	268	258	-10	-3.9%	-17	-3
Therapy Professions	34	34			+2	+1
Social Care	196	197	+1	+0.4%	+24	+24
Social Workers	11	11			-2	-1
Psychologists	14	13	-0	-1.5%	+2	+2
Pharmacy	2	2				
H&SC, Other	3	3			-2	-2
Health & Social Care Professionals	260	260	+1	+0.2%	+25	+26
Management (VIII & above)	10	10			+1	+1
Administrative/ Supervisory (V to VII)	28	27	-1	-3.3%	-0	+0
Clerical (III & IV)	33	33			+1	+1
Management & Administrative	71	70	-1	-1.3%	+2	+2
Support	78	79	+1	+0.9%	+3	+2
Maintenance/ Technical	7	7			-1	-1
General Support	85	86	+1	+0.8%	+2	+1
Health Care Assistants	367	364	-3	-0.9%	-3	-5
Care, other	28	27	-1	-3.3%	-4	-3
Patient & Client Care	395	391	-4	-1.1%	-7	-9

Daughters of Charity, Limerick

Sep 2021 (Dec 2020 figure: 549)	WTE Aug 2021	WTE Sep 2021	WTE change since Aug 21	% change since Aug 21	WTE change since Dec 20	WTE change since Sep 20
Overall	545	541	-5	-0.9%	-9	-4
Medical/ Dental, other	1	1				
Medical & Dental	1	1				
Nurse/ Midwife Manager	32	32				-3
Nurse/ Midwife Specialist & AN/MP	5	6	+1	+20.5%	-0	-1
Staff Nurse/ Staff Midwife	145	149	+4	+2.6%	-4	+5
<i>Pre-registration Nurse/ Midwife Intern</i>	8	1	-7	-87.5%	-11	+1
<i>Pre-registration Nurse Intern (COVID-19)</i>				-100.0%		-1
Nursing/ Midwifery Student	8	1	-7	-87.5%	+1	
Nursing/ Midwifery other	3	3				
Nursing & Midwifery	193	190	-2	-1.2%	-4	+1
Therapy Professions	14	14			-2	-1
Social Care	67	66	-1	-1.9%	-1	+8
Social Workers	5	5	-1	-16.7%	-1	-1
Psychologists	6	6			-1	-1
H&SC, Other	6	6			+0	+0
Health & Social Care Professionals	99	96	-2	-2.2%	-4	+5
Management (VIII & above)	2	2				
Administrative/ Supervisory (V to VII)	11	11				
Clerical (III & IV)	14	14			-0	-0
Management & Administrative	27	27			-0	-0
Support	41	41			-2	-2
Maintenance/ Technical	4	4				
General Support	46	46			-2	-2
Health Care Assistants	158	156	-1	-0.8%	+0	-10
Care, other	23	24	+1	+3.2%	+1	+2
Patient & Client Care	181	180	-1	-0.3%	+1	-8

Daughters of Charity, Roscrea

Sep 2021 (Dec 2020 figure: 289)	WTE Aug 2021	WTE Sep 2021	WTE change since Aug 21	% change since Aug 21	WTE change since Dec 20	WTE change since Sep 20
Overall	293	292	-1	-0.3%	+3	+6
Nurse/ Midwife Manager	15	15	-0	-1.7%	+0	+0
Staff Nurse/ Staff Midwife	18	18			-1	-0
Nursing/ Midwifery other	1	1				
Nursing & Midwifery	34	33	-0	-0.8%	-1	+0
Therapy Professions	2	2				
Social Care	26	28	+2	+5.9%	+3	+3
Social Workers	1	1				
Psychologists	1	1				
Health & Social Care Professionals	30	32	+2	+5.1%	+3	+3
Management (VIII & above)	1	1				
Administrative/ Supervisory (V to VII)	7	7			-1	
Clerical (III & IV)	7	7			+1	+0
Management & Administrative	15	15			-0	+0
Support	4	4				
Maintenance/ Technical	5	5				
General Support	9	9				
Health Care Assistants	203	201	-2	-1.1%	+1	+3
Care, other	2	2				
Patient & Client Care	205	203	-2	-1.1%	+1	+3

Kare, Newbridge, Co Kildare

Sep 2021 (Dec 2020 figure: 377)	WTE Aug 2021	WTE Sep 2021	WTE change since Aug 21	% change since Aug 21	WTE change since Dec 20	WTE change since Sep 20
Overall	402	415	+13	+3.2%	+38	+51
Nurse/ Midwife Manager	8	8			+1	+1
Staff Nurse/ Staff Midwife	20	21	+1	+4.0%	-5	-3
Nursing & Midwifery	28	29	+1	+2.8%	-4	-2
Therapy Professions	16	17	+1	+5.3%	+4	+5
Social Care	78	81	+3	+3.8%	+13	+18
Social Workers	3	3	+0	+14.2%	-0	-0
Psychologists	8	8			+0	+1
Health & Social Care Professionals	105	109	+4	+4.1%	+17	+24
Management (VIII & above)	6	6				+1
Administrative/ Supervisory (V to VII)	13	14	+1	+3.9%	+0	+0
Clerical (III & IV)	16	15	-1	-4.5%	+1	+2
Management & Administrative	35	35	-0	-0.6%	+1	+3
Support	1	1			-0	-0
General Support	1	1			-0	-0
Health Care Assistants	119	124	+5	+4.4%	+19	+14
Care, other	114	117	+3	+2.5%	+5	+12
Patient & Client Care	233	241	+8	+3.4%	+24	+27

Sep 2021 (Dec 2020 figure: 320)	WTE Aug 2021	WTE Sep 2021	WTE change since Aug 21	% change since Aug 21	WTE change since Dec 20	WTE change since Sep 20
Overall	355	358	+2	+0.7%	+37	+48
Nurse/ Midwife Manager	18	16	-2	-10.1%	-1	+1
Staff Nurse/ Staff Midwife	31	30	-1	-2.1%	+2	+1
<i>Nursing/ Midwifery awaiting registration</i>		0	+0	-100.0%	+0	+0
Nursing/ Midwifery Student		0	+0	-100.0%	+0	+0
Nursing & Midwifery	48	46	-2	-4.4%	+1	+2
Social Care	111	115	+4	+3.6%	+10	+12
Social Workers	4	4			+1	+1
Psychologists	1	1				
H&SC, Other	1	1				
Health & Social Care Professionals	117	121	+4	+3.5%	+11	+13
Management (VIII & above)	3	3				+1
Administrative/ Supervisory (V to VII)	3	4	+1	+32.0%	-1	-1
Clerical (III & IV)	14	12	-2	-11.6%	+1	+1
Management & Administrative	20	19	-1	-3.3%	-0	+1
Support	1	1	-0	-1.6%	-0	-0
Maintenance/ Technical	2	2				
General Support	3	3	-0	-0.6%	-0	-0
Health Care Assistants	138	141	+3	+1.8%	+26	+34
Care, other	28	27	-1	-4.6%	-1	-2
Patient & Client Care	166	168	+1	+0.7%	+25	+32

Sep 2021 (Dec 2020 figure: 284)	WTE Aug 2021	WTE Sep 2021	WTE change since Aug 21	% change since Aug 21	WTE change since Dec 20	WTE change since Sep 20
Overall	302	299	-4	-1.2%	+14	+20
Nurse/ Midwife Manager	6	7	+0	+6.4%	-3	-3
Staff Nurse/ Staff Midwife	5	5	+0	+7.2%	+1	+1
Nursing & Midwifery	11	12	+1	+6.8%	-2	-2
Therapy Professions	2	2	+0	+9.3%	-1	-1
Social Care	97	96	-1	-1.5%	-4	-3
Social Workers	4	4	-0	-0.7%	+0	+0
Psychologists	2	2	+0	+7.0%	+0	+0
H&SC, Other	3	3	-0	-6.3%	+1	-0
Health & Social Care Professionals	108	107	-1	-1.2%	-4	-3
Senior Management (VIII & GM)	1	1			+1	+1
Management (VIII & above)	1	1			+1	+1
Administrative/ Supervisory (V to VII)	4	4				-1
Clerical (III & IV)	12	12	-1	-4.4%	+2	+2
Management & Administrative	17	17	-1	-3.2%	+2	+2
Support	1	1				
Maintenance/ Technical	3	3				
General Support	4	4				
Health Care Assistants	147	144	-4	-2.5%	+18	+23
Care, other	15	16	+1	+7.0%	+1	+0
Patient & Client Care	162	160	-3	-1.6%	+18	+24

Sep 2021 (Dec 2020 figure: 342)	WTE Aug 2021	WTE Sep 2021	WTE change since Aug 21	% change since Aug 21	WTE change since Dec 20	WTE change since Sep 20
Overall	363	357	-6	-1.7%	+15	+19
Nurse/ Midwife Manager	15	15	-0	-2.1%	+1	+2
Nurse/ Midwife Specialist & AN/MP	2	2	+0	+0.6%	+0	+0
Staff Nurse/ Staff Midwife	21	21	-1	-3.1%	-2	-1
Pre-registration Nurse/ Midwife Intern	11	9	-2	-21.4%	+9	+9
Pre-registration Nurse Intern (COVID-19)	1	1	+0	+33.8%	+1	-5
Nursing/ Midwifery Student	12	10	-2	-18.0%	+10	+4
Nursing/ Midwifery other	6	6	-0	-0.7%	-1	+1
Nursing & Midwifery	56	53	-3	-5.7%	+9	+6
Therapy Professions	6	6	-0	-1.0%	-2	-1
Social Care	96	95	-1	-0.9%	+1	+4
Social Workers	1	2	+1	+100.0%	-1	-0
Psychologists	2	2	+0	+4.4%		+0
H&SC, Other	3	3				
Health & Social Care Professionals	108	108	+0	+0.2%	-2	+2
Management (VIII & above)	4	4				-1
Administrative/ Supervisory (V to VII)	12	12	+0	+0.5%	-1	+0
Clerical (III & IV)	23	18	-5	-20.7%	+6	+5
Management & Administrative	39	34	-5	-12.2%	+5	+4
Support	13	13	+0	+1.1%	-1	-1
Maintenance/ Technical	4	4				-1
General Support	17	17	+0	+0.9%	-1	-2
Health Care Assistants	135	136	+2	+1.3%	+4	+9
Care, other	8	8	-0	-1.8%	-1	+0
Patient & Client Care	143	144	+2	+1.1%	+3	+9

Peamount Hospital (Newcastle)

Sep 2021 (Dec 2020 figure: 483)	WTE Aug 2021	WTE Sep 2021	WTE change since Aug 21	% change since Aug 21	WTE change since Dec 20	WTE change since Sep 20
Overall	536	528	-8	-1.5%	+45	-4
Registrars	2	1	-1	-31.5%	-1	-1
SHO/ Interns	7	8	+1	+18.4%	+1	+1
Medical & Dental	9	9	+1	+6.9%	+0	+0
Nurse/ Midwife Manager	33	34	+1	+1.8%	+6	+2
Nurse/ Midwife Specialist & AN/MP	2	2				
Staff Nurse/ Staff Midwife	91	93	+2	+1.7%	+17	+3
<i>Nursing Education/Clinical</i>	1	1			+1	
Nursing/ Midwifery other	1	1				
Nursing & Midwifery	127	129	+2	+1.7%	+23	+5
Therapy Professions	39	40	+1	+1.9%	+11	+3
Health Science/ Diagnostics	2	2			-1	-1
Social Care	5	5			+1	+1
Social Workers	6	6	+0	+1.4%	+1	+0
<i>Psychologists</i>	1	1			+1	+1
Psychologists	1	1			+1	+1
Pharmacy	5	4	-1	-13.8%	+0	-0
Health & Social Care Professionals	58	58	+0	+0.3%	+14	+3
Management (VIII & above)	5	5	+0	+1.0%	+1	+1
Administrative/ Supervisory (V to VII)	18	16	-2	-11.3%	-1	-2
Clerical (III & IV)	21	20	-1	-5.2%	+0	+1
Management & Administrative	44	41	-3	-7.0%	+0	-0
Support	45	45	+0	+0.0%	+0	-1
Maintenance/ Technical	9	9	-0	-0.8%	-0	+0
General Support	53	53	-0	-0.1%	+0	-0
Health Care Assistants	244	236	-8	-3.2%	+10	-10
Care, other	1	1			-2	-3
Patient & Client Care	245	237	-8	-3.2%	+7	-12

Stewart's Hospital, (Palmerstown)

Sep 2021 (Dec 2020 figure: 914)	WTE Aug 2021	WTE Sep 2021	WTE change since Aug 21	% change since Aug 21	WTE change since Dec 20	WTE change since Sep 20
Overall	936	951	+15	+1.6%	+37	+71
Consultants	0	0				
Medical & Dental	0	0				
Nurse/ Midwife Manager	33	33			+2	+1
Staff Nurse/ Staff Midwife	80	81	+1	+0.6%	+0	+7
Pre-registration Nurse/ Midwife Intern	8	1	-7	-93.3%	+1	+1
Pre-registration Nurse Intern (COVID-19)				-100.0%		-11
Nursing/ Midwifery awaiting registration		8	+8	-100.0%	+8	+8
Nursing/ Midwifery Student	8	9	+1	+13.3%	+9	-3
Nursing/ Midwifery other	2	2			+1	+1
Nursing & Midwifery	122	124	+2	+1.2%	+11	+6
Therapy Professions	19	22	+3	+16.2%	+3	+7
Social Care	16	22	+6	+37.5%	+9	+9
Social Workers	6	7	+1	+7.9%	+1	+1
Psychologists	5	5	+1	+11.1%	+2	+2
Health & Social Care Professionals	45	55	+10	+22.1%	+14	+18
Management (VIII & above)	17	17			+1	+5
Administrative/ Supervisory (V to VII)	20	21	+1	+2.5%	+4	+5
Clerical (III & IV)	23	23			-2	+2
Management & Administrative	60	61	+1	+0.8%	+4	+12
Support	53	53			-2	-3
Maintenance/ Technical	7	7			+1	+1
General Support	60	60			-1	-2
Health Care Assistants	528	533	+5	+0.9%	+13	+34
Care, other	120	118	-2	-1.4%	-4	+2
Patient & Client Care	648	651	+3	+0.5%	+10	+37

Sep 2021 (Dec 2020 figure: 648)	WTE Aug 2021	WTE Sep 2021	WTE change since Aug 21	% change since Aug 21	WTE change since Dec 20	WTE change since Sep 20
Overall	654	653	-1	-0.1%	+5	+16
Registrars	1	1				
Medical & Dental	1	1				
Nurse/ Midwife Manager	43	44	+1	+2.6%	-3	-2
Nurse/ Midwife Specialist & AN/MP	4	4			+1	+0
Staff Nurse/ Staff Midwife	162	153	-9	-5.4%	+1	+10
<i>Pre-registration Nurse Intern (COVID-19)</i>				-100.0%		-12
Nursing/ Midwifery Student				-100.0%	-4	-12
<i>Nursing Education/Clinical</i>	1	1	-0	-18.1%	+1	+1
Nursing/ Midwifery other	1	1	-0	-18.1%	+1	+1
Nursing & Midwifery	209	202	-8	-3.7%	-4	-3
Therapy Professions	3	3				
Social Care	77	77	+0	+0.0%	+1	+1
Social Workers	2	2				
Psychologists	1	1				
Health & Social Care Professionals	83	83	+0	+0.0%	+1	+1
Management (VIII & above)	2	2			+1	+1
Administrative/ Supervisory (V to VII)	5	6	+1	+10.6%	+0	+0
Clerical (III & IV)	11	11	+0	+1.8%	-0	-0
Management & Administrative	19	19	+1	+4.1%	+1	+1
Support	18	17	-1	-3.6%	-2	-3
Maintenance/ Technical	3	3			+0	+0
General Support	21	20	-1	-3.1%	-2	-3
Health Care Assistants	291	299	+8	+2.6%	+11	+21
Care, other	31	30	-1	-2.9%	-3	-1
Patient & Client Care	322	328	+7	+2.1%	+9	+20

St. John of God (IDS)

Sep 2021 (Dec 2020 figure: 468)	WTE Aug 2021	WTE Sep 2021	WTE change since Aug 21	% change since Aug 21	WTE change since Dec 20	WTE change since Sep 20
Overall	447	453	+6	+1.4%	-15	-4
Medical & Dental	1	1				
Nurse/ Midwife Manager	9	8	-1	-9.0%	-0	+0
Staff Nurse/ Staff Midwife	46	48	+2	+3.9%	-1	-0
Nursing & Midwifery	55	56	+1	+1.9%	-1	+0
Therapy Professions	11	11	+1	+7.4%	-2	+0
Social Care	156	154	-2	-1.0%	-5	+1
Social Workers	3	3				
Psychologists	5	6	+1	+15.5%	+0	-0
Health & Social Care Professionals	175	175	+0	+0.0%	-7	+1
Management (VIII & above)	16	16	-0	-0.1%	+2	+2
Administrative/ Supervisory (V to VII)	27	28	+1	+3.0%	+1	+2
Clerical (III & IV)	18	18	+0	+1.8%	-0	-0
Management & Administrative	61	62	+1	+1.9%	+3	+3
Support	12	12	+0	+0.9%	-0	-0
Maintenance/ Technical	5	5				
General Support	17	17	+0	+0.7%	-0	-0
Health Care Assistants	16	18	+2	+12.7%	+0	+2
Care, other	122	124	+2	+1.5%	-10	-10
Patient & Client Care	138	142	+4	+2.8%	-9	-8

St. John of God, Kerry

Sep 2021 (Dec 2020 figure: 320)	WTE Aug 2021	WTE Sep 2021	WTE change since Aug 21	% change since Aug 21	WTE change since Dec 20	WTE change since Sep 20
Overall	330	333	+3	+0.9%	+13	+9
Nurse/ Midwife Manager	15	14	-1	-8.5%	-1	-1
Staff Nurse/ Staff Midwife	44	47	+2	+5.2%	-1	+1
Nursing & Midwifery	59	60	+1	+1.7%	-2	-0
Therapy Professions	4	4	-0	-1.8%	+0	+0
Social Care	49	49	+0	+0.4%	+3	+2
Social Workers	1	1				
Psychologists	1	1	+0	+8.5%	+0	+1
Health & Social Care Professionals	55	55	+0	+0.4%	+3	+3
Management (VIII & above)	3	3	+0	+0.4%	+2	+2
Administrative/ Supervisory (V to VII)	7	7	-0	-3.3%	-0	-0
Clerical (III & IV)	8	8	-0	-3.8%	-1	-1
Management & Administrative	18	18	-1	-3.0%	+1	+0
General Support	31	32	+1	+2.7%	+2	+2
Health Care Assistants	118	120	+2	+1.6%	+7	+1
Care, other	48	47	-0	-0.9%	+1	+4
Patient & Client Care	166	168	+1	+0.9%	+8	+5

St. John of God Liffey Services

Sep 2021 (Dec 2020 figure: 801)	WTE Aug 2021	WTE Sep 2021	WTE change since Aug 21	% change since Aug 21	WTE change since Dec 20	WTE change since Sep 20
Overall	779	799	+20	+2.6%	-1	+25
Registrars	1	1				
Medical & Dental	1	1				
Nurse/ Midwife Manager	20	18	-1	-6.3%	-3	-4
Nurse/ Midwife Specialist & AN/MP	1	1				
Staff Nurse/ Staff Midwife	96	97	+2	+1.6%	+6	+7
Nursing & Midwifery	116	116	+0	+0.2%	+3	+3
Therapy Professions	12	12	-0	-1.2%	-2	-5
Social Care	269	270	+1	+0.2%	+0	+14
Social Workers	7	7	+0	+0.7%	+1	+1
Psychologists	5	5			-2	-2
Health & Social Care Professionals	292	293	+1	+0.2%	-2	+8
Management (VIII & above)	5	6	+1	+12.4%	+1	-0
Administrative/ Supervisory (V to VII)	10	10	+1	+6.3%	-1	+0
Clerical (III & IV)	19	19	-0	-0.3%	+1	+1
Management & Administrative	34	35	+1	+3.4%	+1	+1
Support	25	27	+2	+7.5%	-1	-1
Maintenance/ Technical	14	14	-0	-0.8%	-0	-0
General Support	39	41	+2	+4.5%	-2	-1
Health Care Assistants	159	168	+8	+5.2%	+2	+13
Care, other	137	145	+8	+6.0%	-4	+1
Patient & Client Care	296	313	+17	+5.6%	-1	+13

Sep 2021 (Dec 2020 figure: 1,453)	WTE Aug 2021	WTE Sep 2021	WTE change since Aug 21	% change since Aug 21	WTE change since Dec 20	WTE change since Sep 20
Overall	1,456	1,454	-2	-0.1%	+1	+21
Consultants	7	6	-0	-6.4%	+0	+0
Registrars	1	1				
Medical/ Dental, other	4	4				
Medical & Dental	12	11	-0	-3.8%	+0	+0
Nurse/ Midwife Manager	85	85	+0	+0.3%	-2	-0
Staff Nurse/ Staff Midwife	160	159	-1	-0.4%	-6	+4
Nursing & Midwifery	245	244	-0	-0.2%	-8	+4
Therapy Professions	53	52	-0	-0.6%	+6	+0
Social Care	599	602	+3	+0.5%	+37	+55
Social Workers	19	19			-3	-0
Psychologists	19	20	+1	+5.0%	-3	+1
H&SC, Other	9	9	+0	+2.6%	+0	-0
Health & Social Care Professionals	699	703	+4	+0.6%	+39	+55
Management (VIII & above)	20	19	-0	-2.3%	-1	-1
Administrative/ Supervisory (V to VII)	50	48	-1	-2.8%	+2	+7
Clerical (III & IV)	48	48	+1	+1.4%	-5	-5
Management & Administrative	117	116	-1	-1.0%	-4	+1
Support	41	45	+4	+8.6%	-3	-2
Maintenance/ Technical	12	12				
General Support	53	57	+4	+6.7%	-3	-2
Health Care Assistants	310	302	-8	-2.5%	-20	-34
Care, other	20	21	+0	+1.5%	-3	-3
Patient & Client Care	330	323	-8	-2.3%	-23	-37

St. Patrick's, Kilkenny

Sep 2021 (Dec 2020 figure: 287)	WTE Aug 2021	WTE Sep 2021	WTE change since Aug 21	% change since Aug 21	WTE change since Dec 20	WTE change since Sep 20
Overall	283	283	-0	-0.0%	-4	-6
Nurse/ Midwife Manager	13	13	+0	+1.6%	+1	+1
Staff Nurse/ Staff Midwife	25	23	-2	-6.9%	-3	-3
Pre-registration Nurse/ Midwife Intern	1	1			+1	+1
Nursing/ Midwifery Student	1	1			+1	+1
Nursing & Midwifery	39	37	-2	-3.9%	-1	-1
Social Care	26	28	+2	+8.6%	-0	+1
Social Workers	1	1			-0	
H&SC, Other	2	2			-0	-1
Health & Social Care Professionals	28	31	+2	+7.8%	-1	-1
Executive Management	1	1			+1	
Management (VIII & above)	1	1				
Administrative/ Supervisory (V to VII)	6	6			+0	-1
Clerical (III & IV)	12	12	-0	-0.6%	+0	+1
Management & Administrative	19	19	-0	-0.4%	+0	+0
Support		1	+1	-100.0%	-1	-2
Maintenance/ Technical	2	2			-1	-1
General Support	2	3	+1	+36.0%	-2	-3
Patient & Client Care	194	193	-1	-0.7%	+0	-1

Sunbeam House Services

Sep 2021 (Dec 2020 figure: 450)	WTE Aug 2021	WTE Sep 2021	WTE change since Aug 21	% change since Aug 21	WTE change since Dec 20	WTE change since Sep 20
Overall	483	487	+4	+0.7%	+37	+47
Nurse/ Midwife Manager	5	5			+1	+2
Staff Nurse/ Staff Midwife	32	31	-1	-4.4%	-2	-2
Nursing & Midwifery	37	36	-1	-3.8%	-1	-0
Therapy Professions	3	3			+1	+2
Social Care	216	219	+3	+1.6%	+24	+36
Social Workers	3	3			+1	+2
Psychologists				-100.0%		-2
H&SC, Other				-100.0%		
Health & Social Care Professionals	222	225	+3	+1.6%	+26	+39
Management (VIII & above)	11	9	-2	-18.2%		
Administrative/ Supervisory (V to VII)	11	11			+2	+0
Clerical (III & IV)	23	25	+2	+10.5%	+0	-2
Management & Administrative	44	45	+0	+0.9%	+3	-2
Support	5	6	+0	+3.5%	-2	-7
Maintenance/ Technical	1	2	+1	+100.0%	+2	+1
General Support	6	8	+1	+18.4%	-0	-6
Health Care Assistants	71	71	-1	-0.8%	+6	+6
Care, other	102	102	+0	+0.5%	+3	+10
Patient & Client Care	173	173	-0	-0.0%	+9	+16

Bros. of Charity, West Region

Sep 2021 (Dec 2020 figure: 1,298)	WTE Aug 2021	WTE Sep 2021	WTE change since Aug 21	% change since Aug 21	WTE change since Dec 20	WTE change since Sep 20
Overall	1,334	1,322	-11	-0.9%	+25	+38
Consultants	2	2				
Registrars	2	2				
Medical & Dental	4	4				
Nurse/ Midwife Manager	65	62	-4	-5.4%	-7	-6
Nurse/ Midwife Specialist & AN/MP	4	5	+0	+8.3%	-0	-0
Staff Nurse/ Staff Midwife	118	117	-1	-0.6%	-6	-0
<i>Pre-registration Nurse Intern (COVID-19)</i>				-100.0%		-1
Nursing/ Midwifery Student				-100.0%	-1	-1
Nursing & Midwifery	187	184	-4	-2.0%	-14	-8
Therapy Professions	28	29	+1	+4.3%	-0	-1
Social Care	233	230	-3	-1.2%	+19	+20
Social Workers	26	26	+0	+0.5%	+1	+2
Psychologists	13	13	+0	+3.1%	+1	+0
H&SC, Other	10	12	+1	+12.8%	+0	-3
Health & Social Care Professionals	310	311	+0	+0.1%	+21	+19
Management (VIII & above)	13	13	+0	+0.0%	+0	-1
Administrative/ Supervisory (V to VII)	39	40	+0	+1.0%	+3	+4
Clerical (III & IV)	38	39	+2	+4.3%	+2	+3
Management & Administrative	90	92	+2	+2.3%	+5	+6
Support	37	43	+6	+16.7%	+0	+1
Maintenance/ Technical	5	4	-1	-19.8%	-1	-1
General Support	42	47	+5	+12.3%	-1	+0
Health Care Assistants	586	563	-23	-3.9%	+15	+16
Care, other	114	122	+8	+7.0%	-1	+4
Patient & Client Care	700	685	-15	-2.2%	+14	+21

Social Care Disability Services Employment by Grade Group: Sep 2021

Sep 2021 (Dec 2020 figure: 18,944)	WTE Aug 2021	WTE Sep 2021	WTE change since Aug 21	% change since Aug 21	WTE change since Dec 20	WTE change since Sep 20
Overall	19,346	19,413	+67	+0.3%	+468	+789
Consultant Paediatrics	3	3			-1	-1
Consultant Psychiatry	20	20	-0	-2.3%	-2	-0
Consultants	23	22	-0	-2.0%	-2	-1
Registrar	7	6	-1	-9.0%	+3	+3
Senior Registrar	2	2	-0	-0.5%	-1	-1
Specialist Registrar	1	1			-1	-1
Registrars	10	9	-1	-6.4%	+1	+1
SHO/ Interns	8	9	+1	+16.8%	-0	+1
Medical/ Dental, other	14	14				-2
Medical & Dental	55	55	+0	+0.3%	-1	-1
Clinical Nurse/ Midwife Manager	824	821	-2	-0.3%	+7	+4
Director Nursing/Midwifery, Assistant	44	43	-1	-1.3%	-2	+1
Director of Nursing/Midwifery	38	36	-2	-5.6%	-1	-3
Nurse/ Midwife Manager	905	900	-5	-0.6%	+3	+2
Advanced Nurse/ Midwife Practitioner	8	9	+1	+12.5%	+1	+3
Clinical Nurse/ Midwife Specialist	58	59	+1	+2.1%	+3	+1
Nurse/ Midwife Specialist & AN/MP	66	68	+2	+3.3%	+4	+4
Staff Nurse [Intellectual Disability]	1,734	1,739	+5	+0.3%	-49	+175
Staff Nurse [Psychiatric]	200	197	-2	-1.2%	+145	+140
Staff Nurses [General/ Children's]	637	632	-4	-0.7%	-120	-272
Staff Nurse/ Staff Midwife	2,570	2,569	-1	-0.1%	-24	+43
Public Health Nurse	10	9	-1	-14.5%	+2	+2
Pre-registration Nurse/ Midwife Intern	84	50	-34	-40.6%	+47	+49
Pre-registration Nurse Intern (COVID-19)	1	2	+1	+140.4%	-30	-93
Post-registration Nurse/ Midwife Student				-100.0%		-3
Nursing/ Midwifery awaiting registration		12	+12	-100.0%	-1	-0
Nursing/ Midwifery Student	85	64	-21	-24.3%	+17	-47
Nursing Education/Clinical	20	20	-0	-1.5%	-3	-3
Other Nursing/ Midwifery	2	2			+1	+1
Nursing/ Midwifery other	22	22	-0	-1.3%	-2	-2
Nursing & Midwifery	3,659	3,632	-27	-0.7%	-0	+2
Dietitians	20	19	-1	-5.9%	+2	-1
Occupational Therapists	297	302	+4	+1.4%	+23	+31
Physiotherapists	191	197	+6	+3.0%	+4	+6
Speech & Language Therapists	300	309	+9	+2.9%	+2	+5
Therapy Professions	809	826	+17	+2.1%	+31	+41
Clinical Engineering	15	15	+0	+1.6%	+2	+2
Clinical Measurement	2	2				
Medical Science	4	4				
Radiographers				-100.0%	-1	-1
Health Science/ Diagnostics	21	21	+0	+1.2%	+1	+1
Social Care	2,922	2,935	+13	+0.5%	+146	+234
Social Workers	226	231	+5	+2.1%	+3	+13
Psychologists	231	237	+6	+2.6%	+8	+18
Pharmacy	7	7	-0	-2.4%	+1	-0
Counsellor Therapists	24	23	-0	-1.6%	+4	+3
Other Health & Social Care	36	37	+1	+2.9%	-8	-13
Play Therapists/ Specialists	11	11	+0	+0.3%	+0	-1

Sep 2021 (Dec 2020 figure: 18,944)	WTE Aug 2021	WTE Sep 2021	WTE change since Aug 21	% change since Aug 21	WTE change since Dec 20	WTE change since Sep 20
Overall	19,346	19,413	+67	+0.3%	+468	+789
H&SC, Other	70	71	+1	+1.0%	-5	-11
Health & Social Care Professionals	4,286	4,328	+42	+1.0%	+184	+295
Executive Management	41	40	-1	-2.3%	+4	+6
Senior Management (VIII & GM)	173	174	+1	+0.6%	+6	+11
Management (VIII & above)	214	214	+0	+0.1%	+10	+17
Middle Management (V-VII)	546	546	-0	-0.1%	+35	+55
Other Administrative	13	13			-3	-2
Administrative/ Supervisory (V to VII)	559	559	-0	-0.1%	+32	+54
Clerical (III & IV)	701	711	+10	+1.5%	+26	+36
Management & Administrative	1,474	1,484	+10	+0.7%	+68	+106
Catering	85	84	-1	-0.8%	-12	-17
Household Services	389	395	+6	+1.6%	-10	-7
Other Labs & Associated	1	1				-0
Other Support	137	147	+10	+7.5%	+11	+11
Portering	18	17	-0	-1.9%	-7	-9
Support	629	644	+16	+2.5%	-18	-23
Maintenance	118	119	+1	+0.7%	-3	-2
Technical Services	14	15	+1	+7.1%	+4	+6
Maintenance/ Technical	132	134	+2	+1.4%	+1	+4
General Support	761	778	+17	+2.3%	-17	-19
HCA, Nurse's Aide, etc.	7,310	7,292	-18	-0.2%	+200	+293
HCA (Student Nurse/Midwife COVID-19)				-100.0%		-2
Health & Social Care Assistants	14	13	-1	-4.5%	+2	+2
Health Care Assistants	7,323	7,305	-19	-0.3%	+202	+293
Home Help	88	89	+1	+1.5%	-5	-6
Care, other	1,702	1,742	+41	+2.4%	+37	+118
Patient & Client Care	9,113	9,136	+24	+0.3%	+234	+405

Employment by WTE, Headcount, Gender, Full-Time /Part-Time etc.: Sep 2021

Social Care Disability Services Staff Group	WTE	Headcount	WTE: no.	% Male	% female	Male WTE: no.	Female WTE: no.	% Total Perm	% Male Perm	% Female Perm	% Total Full Time	% Total Part Time	% Male FT	% Female FT
Overall	19,413	22,938	1.18	19.3%	80.7%	1.11	1.20	87.4%	86.3%	87.7%	57.8%	42.2%	68.6%	55.2%
Consultant Paediatrics	3	5	2.00		100.0%		2.00	80.0%	80.0%	80.0%	20.0%	80.0%		20.0%
Consultant Psychiatry	20	26	1.32	26.9%	73.1%	1.15	1.40	73.1%	73.1%	78.9%	53.8%	46.2%	71.4%	47.4%
Consultants	22	31	1.40	22.6%	77.4%	1.15	1.49	74.2%	57.1%	79.2%	48.4%	51.6%	71.4%	41.7%
Registrar	6	7	1.10	42.9%	57.1%	1.27	1.00	0.0%	0.0%	0.0%	100.0%	0.0%	100.0%	100.0%
Senior Registrar	2	2	1.01		100.0%		1.01	0.0%	0.0%	0.0%	100.0%	0.0%		100.0%
Specialist Registrar	1	1	1.00		100.0%		1.00	0.0%	0.0%	0.0%	100.0%	0.0%		100.0%
Registrars	9	10	1.07	30.0%	70.0%	1.27	1.00	0.0%	0.0%	0.0%	100.0%	0.0%	100.0%	100.0%
SHO/ Interns	9	9	1.01	33.3%	66.7%	1.02	1.01	0.0%	0.0%	0.0%	100.0%	0.0%	100.0%	100.0%
Medical/ Dental, other	14	22	1.54	45.5%	54.5%	1.28	1.84	90.9%	80.0%	100.0%	40.9%	59.1%	50.0%	33.3%
Medical & Dental	55	72	1.31	31.9%	68.1%	1.20	1.38	59.7%	52.2%	63.3%	59.7%	40.3%	69.6%	55.1%
Clinical Nurse/ Midwife Manager	821	888	1.08	13.0%	87.0%	1.02	1.09	94.6%	94.6%	94.8%	82.0%	18.0%	97.4%	79.7%
Director Nursing/Midwifery, Assistant	43	44	1.02	15.9%	84.1%	1.00	1.02	97.7%	97.7%	97.3%	93.2%	6.8%	100.0%	91.9%
Director of Nursing/Midwifery	36	38	1.07	10.5%	89.5%	1.02	1.07	92.1%	92.1%	91.2%	94.7%	5.3%	100.0%	94.1%
Nurse/ Midwife Manager	900	970	1.08	13.0%	87.0%	1.02	1.09	94.6%	93.7%	94.8%	83.0%	17.0%	97.6%	80.8%
Advanced Nurse/ Midwife Practitioner	9	9	1.00	33.3%	66.7%	1.00	1.00	88.9%	88.9%	83.3%	100.0%	0.0%	100.0%	100.0%
Clinical Nurse/ Midwife Specialist	59	66	1.12	6.1%	93.9%	1.01	1.12	95.5%	95.5%	95.2%	60.6%	39.4%	100.0%	58.1%
Nurse/ Midwife Specialist & AN/MP	68	75	1.10	9.3%	90.7%	1.01	1.11	94.7%	100.0%	94.1%	65.3%	34.7%	100.0%	61.8%
Staff Nurse [Intellectual Disability]	1,739	1,986	1.14	8.6%	91.4%	1.08	1.15	95.4%	95.4%	95.4%	65.9%	34.1%	81.8%	64.4%
Staff Nurse [Psychiatric]	197	234	1.19	11.1%	88.9%	1.08	1.20	90.6%	90.6%	91.3%	65.8%	34.2%	80.8%	63.9%
Staff Nurses [General/ Children's]	632	763	1.21	13.5%	86.5%	1.07	1.23	91.0%	91.0%	90.5%	66.6%	33.4%	87.4%	63.3%
Staff Nurse/ Staff Midwife	2,569	2,983	1.16	10.0%	90.0%	1.08	1.17	93.9%	93.6%	93.9%	66.0%	34.0%	83.6%	64.1%
Public Health Nurse	9	10	1.14		100.0%	#DIV/0	1.14	100.0%		100.0%	60.0%	40.0%	#DIV/0	60.0%
Nursing/ Midwifery Student	64	127	1.98	7.1%	92.9%	1.82	2.00	3.9%	0.0%	4.2%	76.4%	23.6%	66.7%	77.1%
Nursing Education/Clinical	20	23	1.15		100.0%		1.15	95.7%	95.7%	95.7%	65.2%	34.8%		65.2%
Other Nursing/ Midwifery	2	2	1.00	50.0%	50.0%	1.00	1.00	100.0%	100.0%	100.0%	100.0%	0.0%	100.0%	100.0%
Nursing/ Midwifery other	22	25	1.13	4.0%	96.0%	1.00	1.14	96.0%	100.0%	95.8%	68.0%	32.0%	100.0%	66.7%
Nursing & Midwifery	3,632	4,190	1.15	10.5%	89.5%	1.07	1.16	91.4%	91.9%	91.3%	70.3%	29.7%	87.6%	68.2%

Dietitians	19	23	1.23		100.0%		1.23	95.7%	95.7%	95.7%	65.2%	34.8%		65.2%
Occupational Therapists	302	343	1.14	6.4%	93.6%	1.08	1.14	92.1%	92.1%	92.5%	79.9%	20.1%	86.4%	79.4%
Physiotherapists	197	233	1.18	18.0%	82.0%	1.05	1.22	92.3%	92.3%	92.1%	67.8%	32.2%	88.1%	63.4%
Speech & Language Therapists	309	365	1.18	2.2%	97.8%	1.09	1.18	91.0%	91.0%	91.3%	75.1%	24.9%	100.0%	74.5%
Therapy Professions	826	964	1.17	7.5%	92.5%	1.06	1.18	91.8%	88.9%	92.0%	74.8%	25.2%	88.9%	73.7%
Clinical Engineering	15	15	1.01	93.3%	6.7%	1.01	1.00	86.7%	86.7%	100.0%	93.3%	6.7%	92.9%	100.0%
Clinical Measurement	2	2	1.00	100.0%		1.00		100.0%	100.0%		100.0%	0.0%	100.0%	
Medical Science	4	4	1.00	75.0%	25.0%	1.00	1.00	75.0%	75.0%	100.0%	100.0%	0.0%	100.0%	100.0%
Health Science/ Diagnostics	21	21	1.00	90.5%	9.5%	1.00	1.00	85.7%	84.2%	100.0%	95.2%	4.8%	94.7%	100.0%
Social Care	2,935	3,432	1.17	16.3%	83.7%	1.09	1.19	89.6%	90.7%	89.4%	49.0%	51.0%	64.2%	46.0%
Social Workers	231	273	1.18	17.2%	82.8%	1.13	1.20	93.0%	91.5%	93.4%	71.8%	28.2%	83.0%	69.5%
Psychologists	237	271	1.14	20.7%	79.3%	1.10	1.15	93.7%	96.4%	93.0%	74.9%	25.1%	82.1%	73.0%
Pharmacy	7	9	1.36		100.0%	#DIV/0	1.36	88.9%		88.9%	77.8%	22.2%	#DIV/0	77.8%
Counsellor Therapists	23	28	1.19	7.1%	92.9%	1.00	1.21	96.4%	96.4%	96.2%	53.6%	46.4%	100.0%	50.0%
Other Health & Social Care	37	52	1.42	15.4%	84.6%	1.05	1.52	86.5%	86.5%	86.4%	42.3%	57.7%	75.0%	36.4%
Play Therapists/ Specialists	11	15	1.37	20.0%	80.0%	1.00	1.51	93.3%	93.3%	91.7%	53.3%	46.7%	100.0%	41.7%
H&SC, Other	71	95	1.34	13.7%	86.3%	1.03	1.40	90.5%	92.3%	90.2%	47.4%	52.6%	84.6%	41.5%
Health & Social Care	4,328	5,065	1.17	15.1%	84.9%	1.09	1.19	90.4%	90.8%	90.3%	56.7%	43.3%	70.1%	54.3%
Executive Management	40	40	1.00	32.5%	67.5%	1.00	1.00	92.5%	92.5%	96.3%	100.0%	0.0%	100.0%	100.0%
Senior Management (VIII & GM)	174	178	1.02	32.6%	67.4%	1.02	1.02	96.1%	96.1%	97.5%	96.6%	3.4%	98.3%	95.8%
Management (VIII & above)	214	218	1.02	32.6%	67.4%	1.02	1.02	95.4%	91.5%	97.3%	97.2%	2.8%	98.6%	96.6%
Middle Management (V-VII)	546	593	1.09	21.6%	78.4%	1.04	1.10	93.3%	93.3%	93.3%	77.6%	22.4%	86.7%	75.1%
Other Administrative	13	13	1.00	15.4%	84.6%	1.00	1.00	100.0%	100.0%	100.0%	100.0%	0.0%	100.0%	100.0%
Administrative/ Supervisory (V to VII)	559	606	1.08	21.5%	78.5%	1.04	1.10	93.4%	93.1%	93.5%	78.1%	21.9%	86.9%	75.6%
Clerical (III & IV)	711	857	1.21	10.5%	89.5%	1.11	1.22	88.4%	77.8%	89.7%	58.1%	41.9%	74.4%	56.2%
Management & Administrative	1,484	1,681	1.13	17.3%	82.7%	1.05	1.15	91.1%	88.0%	91.8%	70.4%	29.6%	85.9%	67.1%
Catering	84	103	1.23	27.2%	72.8%	1.06	1.31	99.0%	99.0%	100.0%	58.3%	41.7%	85.7%	48.0%
Household Services	395	569	1.44	16.2%	83.8%	1.48	1.43	87.7%	87.7%	90.4%	34.8%	65.2%	56.5%	30.6%
Other Labs & Associated	1	1	1.00		100.0%		1.00	100.0%	100.0%	100.0%	100.0%	0.0%		100.0%
Other Support	147	229	1.56	52.8%	47.2%	1.31	1.97	92.1%	92.1%	100.0%	29.3%	70.7%	48.8%	7.4%
Portering	17	24	1.39	95.8%	4.2%	1.40	1.25	87.5%	87.5%	100.0%	41.7%	58.3%	43.5%	0.0%
Support	644	926	1.44	28.5%	71.5%	1.34	1.48	90.1%	82.6%	93.1%	36.3%	63.7%	54.9%	28.9%
Maintenance	118	131	1.11	92.4%	7.6%	1.09	1.29	93.1%	93.1%	100.0%	77.1%	22.9%	81.0%	30.0%
Technical Services	15	15	0.99	80.0%	20.0%	0.99	1.00	93.3%	93.3%	100.0%	100.0%	0.0%	100.0%	100.0%
Maintenance/ Technical	134	146	1.09	91.1%	8.9%	1.08	1.21	93.2%	92.5%	100.0%	79.5%	20.5%	82.7%	46.2%

General Support	778	1,072	1.38	37.0%	63.0%	1.24	1.47	90.5%	85.9%	93.2%	42.2%	57.8%	64.2%	29.2%
HCA, Nurse's Aide, etc.	7,292	8,560	1.17	23.2%	76.8%	1.11	1.20	83.6%	83.6%	83.5%	52.2%	47.8%	61.9%	49.2%
Health & Social Care Assistants	13	17	1.30	5.9%	94.1%	1.00	1.33	88.2%	88.2%	87.5%	35.3%	64.7%	100.0%	31.3%
Health Care Assistants	7,305	8,577	1.17	23.2%	76.8%	1.11	1.20	83.6%	84.0%	83.5%	52.1%	47.9%	61.9%	49.2%
Home Help	89	241	2.70	8.7%	91.3%	3.95	2.62	55.6%	52.4%	55.9%	3.3%	96.7%	0.0%	3.6%
Care, other	1,742	2,040	1.17	24.5%	75.5%	1.12	1.19	88.0%	86.2%	88.6%	63.1%	36.9%	72.3%	60.1%
Patient & Client Care	9,136	10,858	1.19	23.1%	76.9%	1.12	1.21	83.8%	84.2%	83.7%	53.1%	46.9%	63.4%	50.0%

Employment by WTE, Headcount, Gender, Full-Time /Part-Time etc.: Sep 2021

Social Care Disability Services CHO	WTE	Headcount	WTE: no.	% Male	% female	Male WTE: no.	Female WTE: no.	% Total Perm	% Male Perm	% Female Perm	% Total Full Time	% Total Part Time	% Male FT	% Female FT
Overall	19,413	22,938	1.18	19.3%	80.7%	1.11	1.20	87.4%	86.3%	87.7%	57.8%	42.2%	68.6%	55.2%
CHO 1	1,557	1,757	1.13	20.2%	79.8%	1.06	1.15	89.7%	89.7%	89.8%	76.9%	23.1%	88.5%	74.0%
CHO 2	1,540	1,923	1.25	24.0%	76.0%	1.21	1.26	80.9%	80.9%	81.4%	43.4%	56.6%	47.9%	41.9%
CHO 3	1,971	2,319	1.18	12.6%	87.4%	1.12	1.18	83.6%	83.6%	84.1%	40.5%	59.5%	44.4%	39.9%
CHO 4	2,620	3,129	1.19	20.4%	79.6%	1.12	1.22	83.4%	83.4%	84.5%	65.5%	34.5%	73.5%	63.5%
CHO 5	1,649	1,947	1.18	18.9%	81.1%	1.10	1.20	84.9%	84.9%	85.1%	53.7%	46.3%	63.6%	51.4%
CHO 6	1,230	1,405	1.14	21.6%	78.4%	1.08	1.16	94.1%	94.1%	94.7%	67.7%	32.3%	81.5%	63.9%
CHO 7	3,240	3,819	1.18	22.9%	77.1%	1.11	1.20	88.4%	88.4%	88.4%	67.6%	32.4%	79.3%	64.1%
CHO 8	2,263	2,724	1.20	20.4%	79.6%	1.12	1.23	92.3%	92.3%	92.2%	47.7%	52.3%	55.2%	45.8%
CHO 9	3,336	3,909	1.17	14.8%	85.2%	1.09	1.19	89.7%	89.7%	89.5%	56.4%	43.6%	72.5%	53.6%
other Community Services	6	6	1.01	16.7%	83.3%	1.01	1.01	83.3%	83.3%	80.0%	83.3%	16.7%	100.0%	80.0%

Summary Staff Movement: September 2021

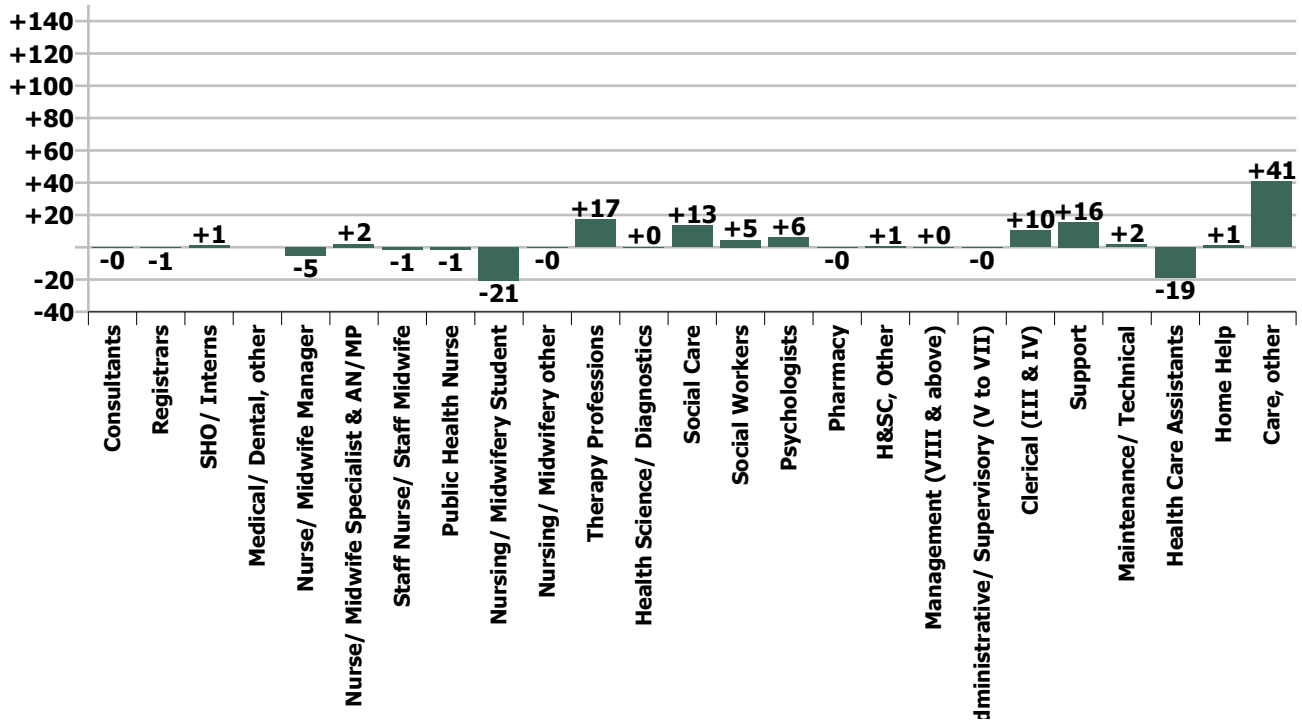
Month-on-month
Summary

WTE change since Aug 21	% change since Aug 21	overall	Consultants	Registrars	SHO/ Interns	Medical/ Dental, other	Medical & Dental	Nurse/ Midwife Manager	Nurse/ Midwife Specialist & AN/MP	Staff Nurse/ Staff Midwife	Public Health Nurse	Nursing/ Midwifery Student	Nursing/ Midwifery other	Nursing & Midwifery	Therapy Professions	Health Science/ Diagnostics	Social Care	Social Workers	Psychologists	Pharmacy	H&SC, Other	Health & Social Care Professionals	Management (VIII & above)	Administrativ e/ Supervisory (V to VII)	Clerical (III & IV)	Management & Administrative	Support	Maintenance/ Technical	General Support	Health Care Assistants	Home Help	Care, other	Patient & Client Care
Overall	+0.3%	+67	-0.5	-0.6	+1.3	0.0	+0.2	-5.1	+2.2	-1.5	-1.5	-20.6	-0.3	-26.7	+17.3	+0.2	+13.4	+4.7	+6.1	-0.2	+0.7	+42.3	+0.1	-0.4	+10.3	+10.0	+15.6	+1.8	+17.4	-18.6	+1.3	+40.9	+23.5
CHO 1	+0.7%	+11					0.0	-1.3	+0.5	+2.3	-1.0	-3.0	-0.1	-2.7	+1.7		-0.4	+1.8	+0.9		+0.4	+4.5	+0.1	+0.0	+0.0	+0.2	+0.1		+0.1	+6.4	+0.5	+2.4	+9.3
CHO 2	-1.0%	-15					0.0	-3.7	+0.4	-2.8				-6.1	+1.7		-4.1	+0.1	+0.4		+1.3	-0.5	+1.0	+0.4	+1.6	+3.0	+6.2	-1.0	+5.2	-23.6		+6.9	-16.6
CHO 3	-0.6%	-11	-0.1				-0.1	-1.4		+3.2		-5.9		-4.2	+2.8	+0.1	-3.7	-1.7	-0.6		+0.0	-2.9	-0.0	-1.1	+1.0	-0.1	+0.5	-0.0	+0.5	-6.8		+2.5	-4.3
CHO 4	-0.4%	-10					0.0	+2.0		-3.0				-1.0	+0.4		-2.3	+1.1	+0.7		-0.0	-0.0	-0.8	-0.1	+0.1	-0.7	+0.9	+0.0	+0.9	-14.8		+5.8	-9.0
CHO 5	+2.4%	+38					0.0	-1.0		-1.7	-0.5	-1.7	-0.0	-4.9	+1.9		+5.0	+1.6	-0.2		-0.0	+8.3		+0.2	+2.0	+2.1	+0.9	+2.0	+2.9	+17.0	+0.2	+12.5	+29.8
CHO 6	+0.2%	+3			+0.0		+0.0	-1.9		+3.4				+1.5	-4.4		+3.3	-0.6	+1.1		-0.0	-0.6	-2.0	+0.8	+1.1	-0.2	-0.2	+1.0	+0.8	-1.1		+2.3	+1.1
CHO 7	+1.3%	+42		-0.6	+1.2		+0.6	+1.0		+5.4		+1.0		+7.3	+3.5		+9.6	+0.3	+0.7	-0.2	-1.0	+12.9	+0.6	-0.4	-3.0	-2.8	+3.4	-0.2	+3.2	+10.7	+0.4	+9.3	+20.3
CHO 8	-0.4%	-10					0.0	-0.5	+0.0	-8.1		-1.9	-0.2	-10.7	+1.1	+0.1	+1.8	+0.7	-0.2		-0.3	+3.3	-0.1	+0.5	-6.6	-6.3	-0.4	-0.0	-0.4	+5.0	+0.2	-1.2	+4.0
CHO 9	+0.6%	+19	-0.4	-0.0			-0.4	+1.8	+1.3	-0.2		-9.0	+0.1	-6.0	+8.5		+4.0	+1.3	+3.2		+0.2	+17.3	+1.4	-0.7	+14.2	+14.9	+4.2		+4.2	-11.3		+0.3	-11.0
other Community Services	-0.2%	-0																				-0.0				-0.0							
		+0.3%	-2.0%	-6.4%	+16.8%		+0.3%	-0.6%	+3.3%	-0.1%	-14.5%	-24.3%	-1.3%	-0.7%	+2.1%	+1.2%	+0.5%	+2.1%	+2.6%	-2.4%	+1.0%	+1.0%	+0.1%	-0.1%	+1.5%	+0.7%	+2.5%	+1.4%	+2.3%	-0.3%	+1.5%	+2.4%	+0.3%

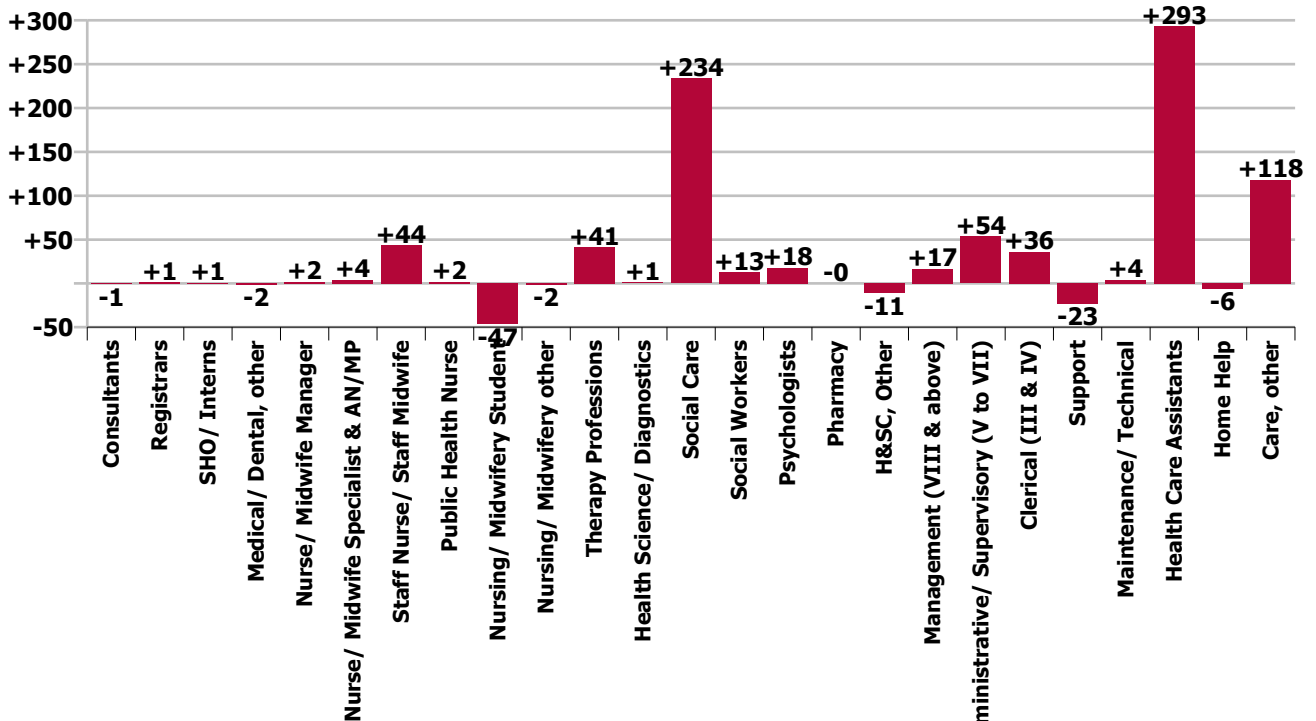
Year-on-year Summary

WTE change since Sep 20	% change since Sep 20	overall	Consultants	Registrars	SHO/ Interns	Medical/ Dental, other	Medical & Dental	Nurse/ Midwife Manager	Nurse/ Midwife Specialist & AN/MP	Staff Nurse/ Staff Midwife	Public Health Nurse	Nursing/ Midwifery Student	Nursing/ Midwifery other	Nursing & Midwifery	Therapy Professions	Health Science/ Diagnostics	Social Care	Social Workers	Psychologists	Pharmacy	H&SC, Other	Health & Social Care Professionals	Management (VIII & above)	Administrativ e/ Supervisory (V to VII)	Clerical (III & IV)	Management & Administrative	Support	Maintenance/ Technical	General Support	Health Care Assistants	Home Help	Care, other	Patient & Client Care
Overall	+4.2%	+789	-1	+1	+1	-2	-1	+2	+4	+43	+2	-47	-2	+2	+41	+1	+234	+13	+18	-0	-11	+295	+17	+54	+36	+106	-23	+4	-19	+293	-6	+118	+405
CHO 1	+0.7%	+11				-0	-0	+1	+0	+28		-20	-3	+6	+4		+1	+1	+5		-1	+10	-2	+8	-1	+5	-16	-1	-17	-4	-2	+13	+7
CHO 2	+2.8%	+42						-7	+1	-5		-1		-13	+0		+19	+2	+0		-3	+19	+1	+6	+1	+8	+1	-1	+0	+18		+9	+27
CHO 3	+3.8%	+72	-0				-0	-5	-2	+1		+0		-6	+3	+1	+15	+2	-2		-2	+18	-0	-2	+0	-1	-2	+2	+0	+38		+24	+62
CHO 4	+4.3%	+108	+1			-1	-0	+1		-7		-11	-1	-17	+8		+15	+2	+0		-2	+22	-1	-3	+0	-4	+6	+2	+8	+83		+16	+99
CHO 5	+9.6%	+144	+0			-1	-1	+0	+1	+4	+2	-1	+1	+7	+15		-2	+4	+9		-1	+26	+3	+17	+7	+27	-2	+2	-0	+57	-2	+31	+86
CHO 6	+3.4%	+41			+1		+1	+1		+1				+2	-1		+40	+1	-2		-0	+37	-0	+2	-5	-3	-7	+1	-6	+4		+6	+10
CHO 7	+5.6%	+172	-0	-1	+1		+0	+7	-1	+15		-3	+1	+20	+3	-1	+51	-0	+2	-0		+55	+9	+6	+7	+22	-5	+1	-4	+62	-0	+16	+78
CHO 8	+4.6%	+99	-1				-1	-0	-0	+5		-8	+2	-2	-2	-0	+14	+2	+5		-0	+19	+1	-2	+5	+4	-3	-1	-4	+83	-2	+1	+82
CHO 9	+3.1%	+99	-0	+2	-1		+1	+5	+5	+1		-4	-2	+5	+11	+1	+80	-0	-0		-2	+90	+6	+21	+21	+48	+4	-1	+3	-48		+1	-47
other Community Services	-0.2%	-0																				-0			-0	-0							
		+4.2%	-5.2%	+16.9%	+11.4%	-11.0%	-1.3%	+0.2%	+6.5%	+1.7%	+24.4%	-42.2%	-8.7%	+0.1%	+5.3%	+4.9%	+8.6%	+5.9%	+8.1%	-1.5%	-13.7%	+7.3%	+8.4%	+10.6%	+5.3%	+7.7%	-3.4%	+3.0%	-2.4%	+4.2%	-6.8%	+7.3%	+4.6%

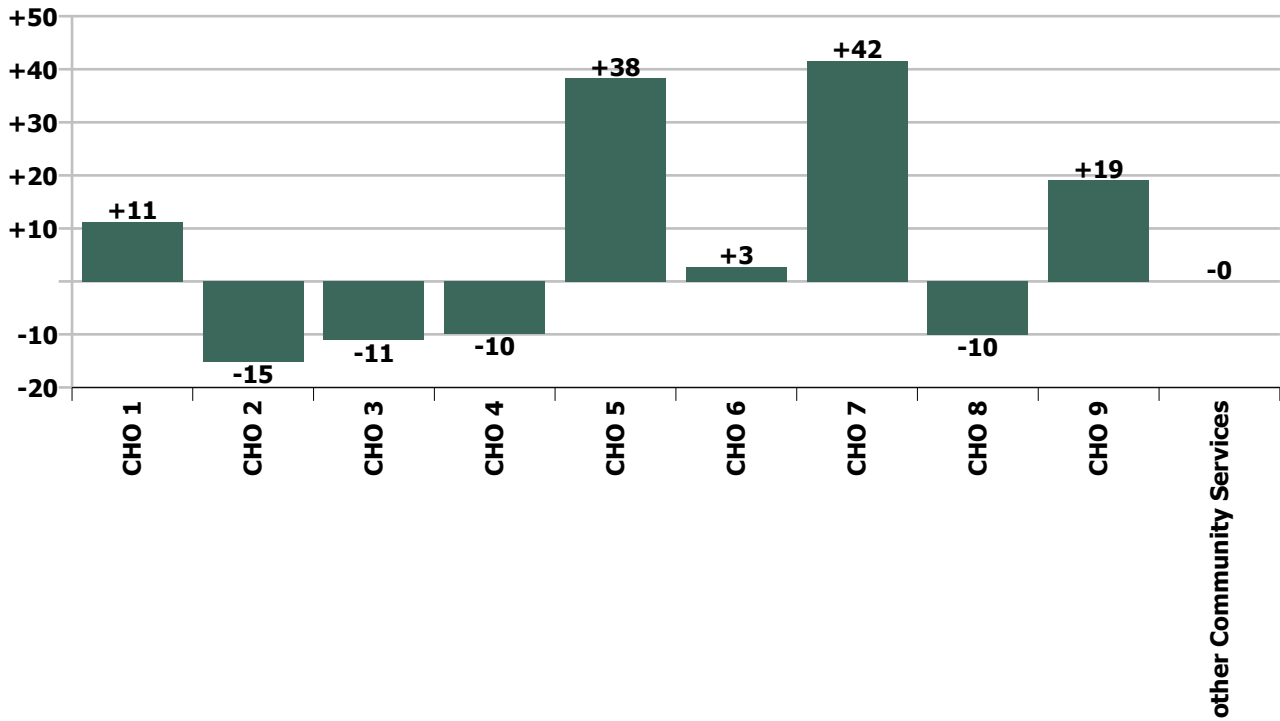
Staff Group change since: Aug 2021



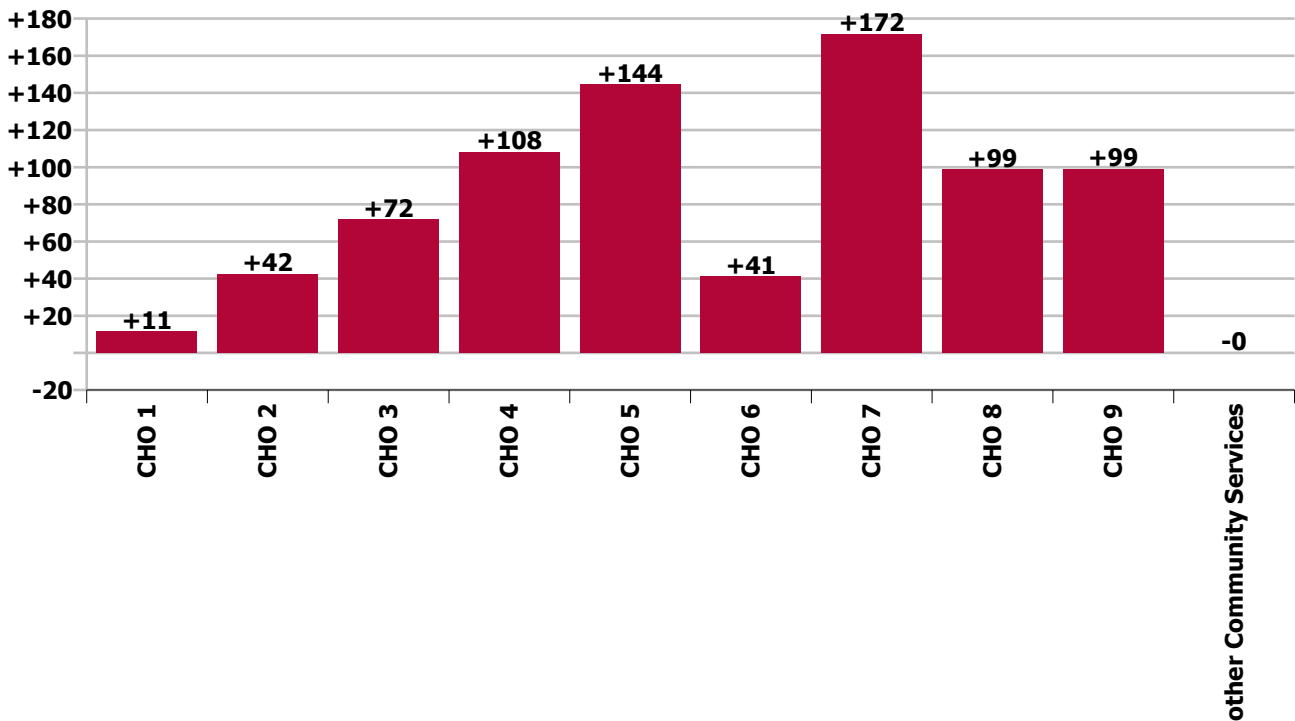
Staff Group change since: Sep 2020



CHO change since: Aug 2021



CHO change since: Sep 2020



Longitudinal Employment Levels by Grade Group - Dec 2016 to Sep 2021

Sep 2021 (Dec 2015 figure: 15,715)	WTE Sep 2021	WTE change since Dec 16	WTE change since Dec 17	WTE change since Dec 18	WTE change since Dec 19	WTE change since Dec 20	WTE change since Apr 21	% change since Dec 16	% change since Dec 17	% change since Dec 18	% change since Dec 19	% change since Dec 20	% change since Apr 21
Overall	19,413	+2,659	+2,016	+1,593	+1,110	+468	+299	+15.9%	+11.6%	+8.9%	+6.1%	+2.5%	+1.6%
Consultant Medicine		-2						-100.0%	-100.0%	-100.0%	-100.0%	-100.0%	-100.0%
Consultant Paediatrics	3	-1	-1	-1	-1	-1	-1	-22.1%	-20.4%	-18.0%	-18.0%	-18.0%	-18.0%
Consultant Psychiatry	20	-1	-3	+2	-1	-2	+1	-6.9%	-13.9%	+9.9%	-5.6%	-7.8%	+6.3%
Consultant Surgery		-0						-100.0%	-100.0%	-100.0%	-100.0%	-100.0%	-100.0%
Consultants	22	-4	-4	+1	-2	-2	+1	-14.8%	-14.7%	+5.8%	-7.2%	-9.1%	+2.8%
Registrar	6	+0	+0	+1	-1	+3	+1	+6.2%	+6.2%	+19.7%	-9.0%	+112.3%	+25.6%
Senior Registrar	2	-0	-1	-0	-0	-1	-0	-0.5%	-33.7%	-0.5%	-0.5%	-33.7%	-0.5%
Specialist Registrar	1	-1	-3		-3	-1	-2	-50.0%	-75.0%		-75.0%	-50.0%	-62.8%
Registrars	9	-1	-4	+1	-4	+1	-0	-6.4%	-28.0%	+12.5%	-28.0%	+17.0%	-4.1%
SHO/ Interns	9	+3	+2	+2	+2	-0	+1	+48.5%	+27.3%	+28.2%	+28.0%	-1.0%	+10.8%
Dentists								-100.0%	-100.0%	-100.0%	-100.0%	-100.0%	-100.0%
Other Medical	14	-1	+0	+0	-0			-3.8%	+0.2%	+1.1%	-0.6%		
Medical/ Dental, other	14	-1	+0	+0	-0			-3.8%	+0.2%	+1.1%	-0.6%		
Medical & Dental	55	-2	-6	+4	-3	-1	+1	-3.8%	-9.1%	+8.7%	-6.0%	-1.7%	+2.0%
Clinical Nurse/ Midwife Manager	821	+10	+13	+13	+10	+7	+2	+1.2%	+1.6%	+1.6%	+1.3%	+0.8%	+0.2%
Director Nursing/Midwifery, Assistant	43	+1	+6	+5	+2	-2	-4	+2.1%	+16.5%	+13.6%	+5.8%	-5.5%	-8.0%
Director of Nursing/Midwifery	36	-8	-10	-2	-7	-1	+1	-18.5%	-21.8%	-6.2%	-15.6%	-3.5%	+2.7%
Nurse/ Midwife Manager	900	+2	+9	+16	+6	+3	-1	+0.3%	+1.0%	+1.8%	+0.7%	+0.3%	-0.1%
Advanced Nurse/ Midwife Practitioner	9	+8	+7	+7	+7	+1	+1	+800.0%	+350.0%	+350.0%	+350.0%	+12.5%	+12.5%
Clinical Nurse/ Midwife Specialist	59	-12	-9	-7	-1	+3	+1	-16.6%	-12.9%	-10.7%	-1.3%	+5.6%	+2.2%
Nurse/ Midwife Specialist & AN/MP	68	-4	-2	-0	+6	+4	+2	-5.3%	-2.6%	-0.2%	+10.1%	+6.5%	+3.4%
Graduate Nursing/ Midwifery								-100.0%	-100.0%	-100.0%	-100.0%	-100.0%	-100.0%
Staff Nurse [Intellectual Disability]	1,739	+14	+36	+55	+142	-49	-15	+0.8%	+2.1%	+3.3%	+8.9%	-2.7%	-0.8%
Staff Nurse [Psychiatric]	197	+113	+127	+126	+114	+145	-6	+132.7%	+180.1%	+178.4%	+136.3%	+274.9%	-2.9%
Staff Nurses [General/ Children's]	632	-301	-292	-236	-259	-120	-6	-32.3%	-31.6%	-27.2%	-29.1%	-16.0%	-1.0%
Staff Nurse/ Staff Midwife	2,569	-174	-129	-55	-3	-24	-27	-6.4%	-4.8%	-2.1%	-0.1%	-0.9%	-1.0%
Public Health Nurse	9	+2	+3	+2	+2	+2	-2	+34.7%	+43.5%	+30.7%	+39.6%	+27.3%	-20.3%
Pre-registration Nurse/ Midwife Intern	50	+38	+38	+15	+21	+47	-32	+314.2%	+321.5%	+42.7%	+75.9%	+1888.0%	-38.8%
Pre-registration Nurse Intern (COVID-19)	2	+2	+2	+2	+2	-30	+2	-100.0%	-100.0%	-100.0%	-100.0%	-92.9%	+527.8%
Nursing/ Midwifery awaiting registration	12	+12	+12	+12	-2	-1	-1	-100.0%	-100.0%	-100.0%	-12.4%	-6.7%	-6.7%
Nursing/ Midwifery Student	64	+52	+52	+29	+22	+17	-31	+434.1%	+443.6%	+84.1%	+52.3%	+35.5%	-32.2%
Nursing Education/Clinical	20	-1	-1	-1	-1	-3	-4	-5.8%	-5.1%	-5.4%	-5.5%	-12.2%	-16.9%
Other Nursing/ Midwifery	2	-3	-3	+1	+1	+1		-60.0%	-60.0%	+100.0%	+100.0%	+100.0%	
Nursing/ Midwifery other	22	-4	-4	-0	-0	-2	-4	-16.1%	-15.6%	-0.7%	-0.8%	-7.5%	-15.6%
Nursing & Midwifery	3,632	-125	-71	-8	+33	-0	-63	-3.3%	-1.9%	-0.2%	+0.9%	-0.0%	-1.7%
Dietitians	19	+6	+7	+5	+0	+2	+3	+41.7%	+56.4%	+36.1%	+1.1%	+13.7%	+15.7%
Occupational Therapists	302	+50	+53	+61	+37	+23	+14	+20.0%	+21.2%	+25.2%	+14.1%	+8.2%	+5.0%

Sep 2021 (Dec 2015 figure: 15,715)	WTE Sep 2021	WTE change since Dec 16	WTE change since Dec 17	WTE change since Dec 18	WTE change since Dec 19	WTE change since Dec 20	WTE change since Apr 21	% change since Dec 16	% change since Dec 17	% change since Dec 18	% change since Dec 19	% change since Dec 20	% change since Apr 21
Overall	19,413	+2,659	+2,016	+1,593	+1,110	+468	+299	+15.9%	+11.6%	+8.9%	+6.1%	+2.5%	+1.6%
Physiotherapists	197	+12	+12	+16	+8	+4	+8	+6.6%	+6.6%	+8.9%	+4.1%	+2.0%	+4.5%
Podiatrists & Chiropodists		-0	-0					-100.0%	-100.0%	-100.0%	-100.0%	-100.0%	-100.0%
Speech & Language Therapists	309	+38	+26	+30	+16	+2	+3	+14.1%	+9.3%	+10.7%	+5.5%	+0.5%	+1.0%
Therapy Professions	826	+106	+98	+111	+61	+31	+28	+14.7%	+13.5%	+15.6%	+8.0%	+3.9%	+3.6%
Audiology		-13	-18					-100.0%	-100.0%	-100.0%	-100.0%	-100.0%	-100.0%
Clinical Engineering	15	-3	-3	+3	+2	+2	+1	-18.5%	-17.1%	+24.3%	+14.8%	+15.2%	+7.0%
Clinical Measurement	2	+1	+1	+1	+1			+100.0%	+100.0%	+100.0%	+100.0%		
Medical Science	4	+1	+1					+33.3%	+33.3%				
Phlebotomists				-1	-1			-100.0%	-100.0%	-100.0%	-100.0%	-100.0%	-100.0%
Radiographers		-1	-1	-1	-1	-1	-1	-100.0%	-100.0%	-100.0%	-100.0%	-100.0%	-100.0%
Health Science/ Diagnostics	21	-15	-20	+2	+1	+1	-0	-41.8%	-48.8%	+10.1%	+4.6%	+4.9%	-0.1%
Social Care	2,935	+744	+589	+447	+340	+146	+111	+33.9%	+25.1%	+17.9%	+13.1%	+5.2%	+3.9%
Social Workers	231	+15	+10	+11	+12	+3	+1	+7.0%	+4.6%	+5.2%	+5.5%	+1.1%	+0.6%
Psychologists	237	+28	+14	+31	+33	+8	+3	+13.1%	+6.1%	+14.9%	+16.3%	+3.6%	+1.4%
Pharmacy	7	+1	+1	-0	-0	+1	+0	+8.3%	+9.0%	-5.2%	-2.1%	+10.1%	+6.9%
Counsellor Therapists	23	+7	+4	+6	+5	+4	+3	+39.4%	+20.8%	+32.2%	+24.2%	+18.8%	+12.1%
HSCP Trainees/ Students		-2	-1					-100.0%	-100.0%	-100.0%	-100.0%	-100.0%	-100.0%
Other Health & Social Care	37	-22	-22	-15	-14	-8	-5	-37.2%	-37.7%	-29.4%	-27.5%	-18.7%	-12.0%
Play Therapists/ Specialists	11	-3	-2	-4	-5	+0	+0	-19.9%	-16.9%	-24.9%	-29.2%	+0.6%	+1.8%
H&SC, Other	71	-20	-21	-13	-14	-5	-2	-22.0%	-22.7%	-15.6%	-16.3%	-6.2%	-3.1%
Health & Social Care Professionals	4,328	+858	+671	+589	+434	+184	+142	+24.7%	+18.3%	+15.7%	+11.1%	+4.5%	+3.4%
Executive Management	40	+11	+2	+8	+9	+4	+1	+37.8%	+5.1%	+25.6%	+29.8%	+11.0%	+3.8%
Senior Management (VIII & GM)	174	+37	+34	+30	+25	+6	-1	+26.8%	+23.8%	+20.7%	+17.1%	+3.8%	-0.4%
Management (VIII & above)	214	+48	+36	+38	+35	+10	+1	+28.7%	+19.9%	+21.6%	+19.3%	+5.1%	+0.4%
Middle Management (V-VII)	546	+167	+153	+118	+82	+35	+9	+43.9%	+39.1%	+27.6%	+17.6%	+6.8%	+1.7%
Other Administrative	13	-1	-3	-3	-2	-3	-1	-5.9%	-18.5%	-17.8%	-13.1%	-17.8%	-7.1%
Administrative/ Supervisory (V to VII)	559	+166	+150	+115	+80	+32	+8	+42.2%	+36.8%	+26.0%	+16.7%	+6.1%	+1.5%
Clerical (III & IV)	711	+104	+79	+58	+51	+26	+18	+17.2%	+12.5%	+8.8%	+7.7%	+3.8%	+2.6%
Management & Administrative	1,484	+318	+265	+211	+165	+68	+27	+27.2%	+21.7%	+16.6%	+12.5%	+4.8%	+1.9%
Catering	84	-29	-22	-20	-14	-12	-7	-25.9%	-20.5%	-19.5%	-14.3%	-12.6%	-7.2%
Household Services	395	-112	-71	-56	-24	-10	-2	-22.1%	-15.3%	-12.5%	-5.8%	-2.6%	-0.6%
Other Labs & Associated	1	-0		-0			-0	-6.5%		-3.8%			-11.5%
Other Support	147	-47	-42	-44	-41	+11	+4	-24.1%	-22.4%	-23.1%	-21.9%	+8.3%	+2.9%
Portering	17	-9	-9	-8	-10	-7	-1	-35.3%	-34.9%	-32.9%	-37.5%	-29.1%	-6.0%
Support	644	-198	-145	-129	-90	-18	-6	-23.5%	-18.3%	-16.7%	-12.2%	-2.8%	-0.9%
Maintenance	119	-6	-13	-1	+2	-3	-1	-5.0%	-9.6%	-1.2%	+2.0%	-2.3%	-1.2%
Technical Services	15	+10	+10	+9	+7	+4	+4	+196.1%	+196.1%	+147.5%	+86.4%	+36.0%	+36.0%
Maintenance/ Technical	134	+4	-3	+8	+9	+1	+3	+2.9%	-1.9%	+6.0%	+7.5%	+0.9%	+1.9%

Sep 2021 (Dec 2015 figure: 15,715)	WTE Sep 2021	WTE change since Dec 16	WTE change since Dec 17	WTE change since Dec 18	WTE change since Dec 19	WTE change since Dec 20	WTE change since Apr 21	% change since Dec 16	% change since Dec 17	% change since Dec 18	% change since Dec 19	% change since Dec 20	% change since Apr 21
Overall	19,413	+2,659	+2,016	+1,593	+1,110	+468	+299	+15.9%	+11.6%	+8.9%	+6.1%	+2.5%	+1.6%
General Support	778	-194	-147	-122	-80	-17	-4	-19.9%	-15.9%	-13.5%	-9.4%	-2.2%	-0.5%
HCA, Nurse's Aide, etc.	7,292	+1,538	+1,116	+761	+475	+200	+151	+26.7%	+18.1%	+11.7%	+7.0%	+2.8%	+2.1%
Health & Social Care Assistants	13	+2	+4	+2	+3	+2	+1	+21.6%	+43.5%	+19.7%	+36.4%	+18.1%	+8.8%
Health Care Assistants	7,305	+1,541	+1,120	+763	+479	+202	+152	+26.7%	+18.1%	+11.7%	+7.0%	+2.8%	+2.1%
Home Help	89	-6	-34	-23	-20	-5	-2	-6.5%	-27.8%	-20.8%	-18.0%	-4.9%	-2.4%
Care, other	1,742	+270	+218	+180	+103	+37	+45	+18.3%	+14.3%	+11.5%	+6.3%	+2.1%	+2.6%
Patient & Client Care	9,136	+1,804	+1,303	+919	+562	+234	+195	+24.6%	+16.6%	+11.2%	+6.6%	+2.6%	+2.2%

Source: Health Service Personnel Census