

Social Care Services Employment Report: February 2021

Employment by Staff Group

Feb 2021 (Dec 2020 figure: 32,359)	WTE Jan 2021	WTE Feb 2021	WTE change since Jan 21	% change since Jan 21	WTE change since Dec 20	WTE change since Feb 20
Overall	32,352	32,302	-49	-0.2%	-57	+925
Consultants	28	27	-1	-3.8%	-2	+0
Registrars	20	20	+1	+4.0%	+3	+0
SHO/ Interns	21	18	-3	-12.7%	-5	-1
Medical/ Dental, other	102	100	-1	-1.4%	-18	+1
Medical & Dental	170	165	-4	-2.5%	-21	+0
Nurse/ Midwife Manager	1,643	1,656	+13	+0.8%	+13	+53
Nurse/ Midwife Specialist & AN/MP	104	105	+1	+1.0%	+3	+15
Staff Nurse/ Staff Midwife	5,230	5,245	+15	+0.3%	+28	+96
Public Health Nurse	20	19	-1	-4.5%	-1	+1
<i>Pre-registration Nurse/ Midwife Intern</i>	64	75.31	+11	+17.3%	+73	-4
<i>Pre-registration Nurse Intern (COVID-19)</i>	12	9.50	-2	-18.2%	-22	+10
<i>Post-registration Nurse/ Midwife Student</i>				-100.0%		-1
<i>Nursing/ Midwifery awaiting registration</i>	15	14.27	-0	-1.6%	-0	-3
Nursing/ Midwifery Student	90	99	+9	+9.7%	+50	+1
Nursing/ Midwifery other	28	29	+1	+4.9%	+1	+5
Nursing & Midwifery	7,116	7,154	+38	+0.5%	+94	+170
Therapy Professions	1,119	1,118	-1	-0.1%	+27	+57
Health Science/ Diagnostics	26	26	-0	-0.2%	+1	+2
Social Care	2,814	2,799	-14	-0.5%	+7	+210
Social Workers	331	331	+1	+0.2%	+3	+16
Psychologists	237	234	-4	-1.5%	+3	+19
Pharmacy	23	24	+1	+4.0%	+1	-1
H&SC, Other	76	78	+2	+2.5%	+1	-7
Health & Social Care Professionals	4,625	4,610	-15	-0.3%	+44	+296
Management (VIII & above)	273	290	+17	+6.4%	+7	+30
Administrative/ Supervisory (V to VII)	695	726	+31	+4.4%	+23	+75
Clerical (III & IV)	1,271	1,268	-3	-0.3%	-4	+29
Management & Administrative	2,239	2,284	+45	+2.0%	+26	+133
Support	1,452	1,446	-6	-0.4%	-18	-120
Maintenance/ Technical	224	223	-0	-0.2%	-4	-1
General Support	1,675	1,669	-6	-0.4%	-22	-121
Health Care Assistants	11,217	11,185	-32	-0.3%	-35	+411
Home Help	3,459	3,381	-77	-2.2%	-144	-47
Care, other	1,851	1,853	+3	+0.2%	+1	+81
Patient & Client Care	16,527	16,420	-107	-0.6%	-178	+446

**Social Care Services Employment by Administration (HSE / S38):
February 2021**

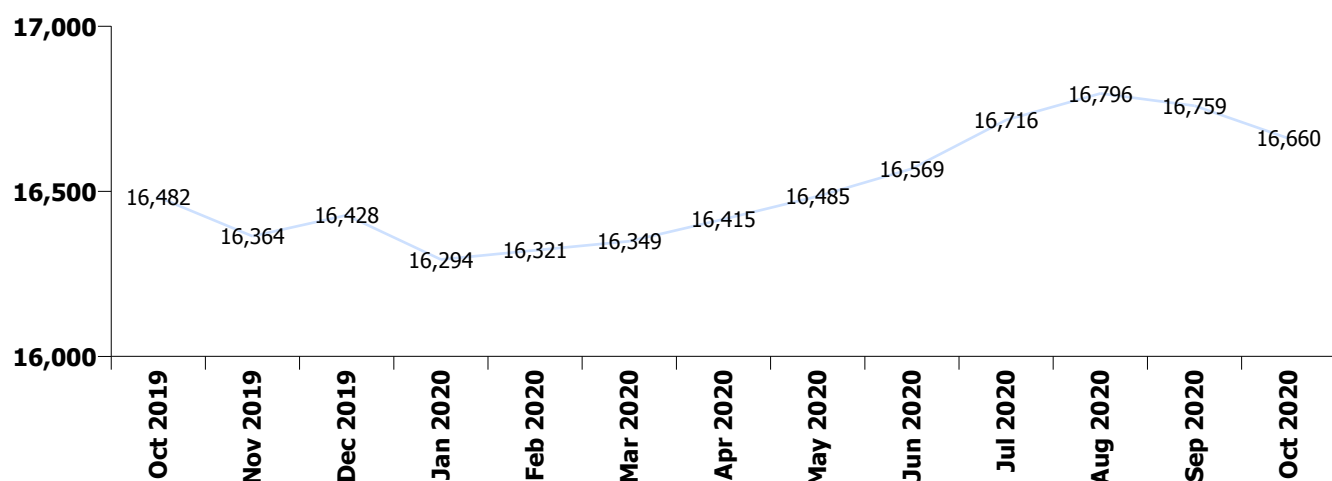
Feb 2021 (Dec 2020 figure: 32,359)	WTE Jan 2021	WTE Feb 2021	WTE change since Jan 21	% change since Jan 21	WTE change since Dec 20	WTE change since Feb 20
Overall	32,352	32,302	-49	-0.2%	-57	+925
HSE	16,743	16,725	-18	-0.1%	-33	+404
Section 38	15,609	15,577	-31	-0.2%	-24	+521

HSE

Feb 2021 (Dec 2020 figure: 16,758)	WTE Jan 2021	WTE Feb 2021	WTE change since Jan 21	% change since Jan 21	WTE change since Dec 20	WTE change since Feb 20
Overall	16,743	16,725	-18	-0.1%	-33	+404
Consultants	11	9.94	-1	-9.3%	-1	-2
Registrars	9	9.31	+1	+6.9%	+2	+2
SHO/ Interns	10	7.00	-3	-28.5%	-5	-1
Medical/ Dental, other	92	90.29	-1	-1.6%	-18	+1
Medical & Dental	121	117	-5	-3.8%	-21	+0
Nurse/ Midwife Manager	960	973.23	+13	+1.4%	+15	+62
Nurse/ Midwife Specialist & AN/MP	56	54.71	-1	-1.7%	+2	+11
Staff Nurse/ Staff Midwife	3,220	3,234.45	+14	+0.4%	+24	+32
Public Health Nurse	20	19.44	-1	-4.5%	-1	+1
Pre-registration Nurse/ Midwife Intern	12	30.00	+18	+155.5%	+28	+2
Pre-registration Nurse Intern (COVID-19)	11	9.50	-2	-13.6%	+1	+10
Post-registration Nurse/ Midwife Student				-100.0%		-1
Nursing/ Midwifery awaiting registration	15	14.27	-0	-1.6%	-0	-3
Nursing/ Midwifery Student	37	53.77	+17	+44.4%	+28	+8
Nursing/ Midwifery other	11	11.67	+1	+7.3%	+1	+3
Nursing & Midwifery	4,304	4,347	+43	+1.0%	+69	+117
Therapy Professions	614	613.05	-1	-0.2%	+17	+49
Health Science/ Diagnostics	8	7.96	-0	-0.7%	-0	+2
Social Care	106	103.98	-2	-1.9%	+1	+12
Social Workers	154	154.40	+0	+0.2%	+4	+13
Psychologists	91	86.59	-4	-4.4%	+3	+11
Pharmacy	12	12.70	+0	+2.3%	+1	-1
H&SC, Other	27	27.22	+0	+0.7%	+1	+0
Health & Social Care Professionals	1,012	1,006	-6	-0.6%	+26	+87
Management (VIII & above)	133	136.44	+4	+2.8%	+4	+15
Administrative/ Supervisory (V to VII)	332	342.09	+10	+3.0%	+16	+52
Clerical (III & IV)	771	760.54	-11	-1.4%	+5	+31
Management & Administrative	1,236	1,239	+3	+0.2%	+25	+98
Support	781	778.67	-2	-0.3%	-3	-24
Maintenance/ Technical	111	111.24	+1	+0.5%	+1	+2
General Support	892	890	-2	-0.2%	-2	-22
Health Care Assistants	5,436	5,453.38	+18	+0.3%	+4	+123
Home Help	3,459	3,381.21	-77	-2.2%	-144	-47
Care, other	283	291.73	+8	+3.0%	+9	+48
Patient & Client Care	9,177	9,126	-51	-0.6%	-130	+124

Section 38

Feb 2021 (Dec 2020 figure: 15,601)	WTE Jan 2021	WTE Feb 2021	WTE change since Jan 21	% change since Jan 21	WTE change since Dec 20	WTE change since Feb 20
Overall	15,609	15,577	-31	-0.2%	-24	+521
Consultants	17	16.67	-0	-0.1%	-1	+2
Registrars	11	11.00	+0	+1.8%	+1	-2
SHO/ Interns	11	11.00	+0	+1.6%		
Medical/ Dental, other	10	10.09				
Medical & Dental	48	49	+0	+0.7%	+0	+0
Nurse/ Midwife Manager	683	683.00	-0	-0.0%	-2	-9
Nurse/ Midwife Specialist & AN/MP	48	50.43	+2	+4.1%	+1	+3
Staff Nurse/ Staff Midwife	2,010	2,010.33	+0	+0.0%	+4	+64
Pre-registration Nurse/ Midwife Intern	52	45.31	-7	-13.7%	+45	-7
Pre-registration Nurse Intern (COVID-19)	1		-1	-100.0%	-23	
Nursing/ Midwifery Student	53	45.31	-8	-14.7%	+22	-7
Nursing/ Midwifery other	17	17.32	+1	+3.4%	+0	+2
Nursing & Midwifery	2,812	2,806	-5	-0.2%	+25	+53
Therapy Professions	505	505.04	+0	+0.0%	+10	+8
Health Science/ Diagnostics	18	18.00			+1	
Social Care	2,707	2,695.27	-12	-0.5%	+7	+199
Social Workers	177	177.06	+0	+0.3%	-0	+3
Psychologists	147	147.16	+0	+0.2%	+0	+8
Pharmacy	11	11.39	+1	+6.0%	-0	-0
H&SC, Other	49	50.55	+2	+3.5%	-0	-8
Health & Social Care Professionals	3,613	3,604	-9	-0.2%	+18	+209
Management (VIII & above)	140	153.37	+14	+9.8%	+3	+14
Administrative/ Supervisory (V to VII)	363	384.05	+21	+5.7%	+7	+22
Clerical (III & IV)	500	507.43	+8	+1.5%	-10	-1
Management & Administrative	1,003	1,045	+42	+4.2%	+1	+35
General Support	783	779	-4	-0.5%	-20	-99
Patient & Client Care	7,349	7,294	-55	-0.8%	-47	+322



Social Care Services Employment by Care Group & Administration (HSE / S38): February 2021

Social Care

Feb 2021 (Dec 2020 figure: 32,359)	WTE Jan 2021	WTE Feb 2021	WTE change since Jan 21	% change since Jan 21	WTE change since Dec 20	WTE change since Feb 20
Overall	32,352	32,302	-49	-0.2%	-57	+925
HSE	4,115	4,147	+32	+0.8%	+63	+203
Section 38	14,866	14,836	-30	-0.2%	-24	+494
Disabilities	18,981	18,983	+2	+0.0%	+39	+698
HSE	12,628	12,578	-50	-0.4%	-95	+200
Section 38	743	741	-1	-0.2%	-0	+27
Older People	13,371	13,319	-52	-0.4%	-96	+227

Disabilities

Feb 2021 (Dec 2020 figure: 18,944)	WTE Jan 2021	WTE Feb 2021	WTE change since Jan 21	% change since Jan 21	WTE change since Dec 20	WTE change since Feb 20
Overall	18,981	18,983	+2	+0.0%	+39	+698
Consultants	24	23	-1	-4.3%	-2	+0
Registrars	9	10	+1	+8.8%	+2	-1
SHO/ Interns	8	7	-1	-16.4%	-2	-1
Medical/ Dental, other	14	14	-0	-0.1%	-0	-0
Medical & Dental	55	54	-2	-2.9%	-2	-1
Nurse/ Midwife Manager	896	901	+5	+0.6%	+4	+12
Nurse/ Midwife Specialist & AN/MP	66	67	+1	+1.7%	+3	+5
Staff Nurse/ Staff Midwife	2,593	2,604	+11	+0.4%	+11	+42
Public Health Nurse	7	7	-0	-0.3%	-0	+1
Pre-registration Nurse/ Midwife Intern	64	75	+11	+17.3%	+47	-4
Pre-registration Nurse Intern (COVID-19)	12	10	-2	-18.2%	+10	+10
Nursing/ Midwifery awaiting registration	13	13			-1	-2
Nursing/ Midwifery Student	89	98	+9	+10.1%	+51	+3
Nursing/ Midwifery other	24	25	+1	+5.8%	+1	+2
Nursing & Midwifery	3,674	3,701	+27	+0.7%	+69	+65
Therapy Professions	809	800	-10	-1.2%	+4	+26
Health Science/ Diagnostics	21	21			+1	+2
Social Care	2,811	2,797	-14	-0.5%	+7	+210
Social Workers	228	229	+1	+0.4%	+1	+9
Psychologists	236	232	-4	-1.9%	+2	+19
Pharmacy	6	6	+1	+11.2%	+0	-1
H&SC, Other	74	76	+2	+2.5%	+1	-7
Health & Social Care Professionals	4,185	4,161	-25	-0.6%	+17	+258
Management (VIII & above)	193	211	+17	+9.0%	+7	+26
Administrative/ Supervisory (V to VII)	511	537	+26	+5.1%	+10	+49
Clerical (III & IV)	674	683	+9	+1.4%	-2	+14
Management & Administrative	1,378	1,431	+53	+3.8%	+15	+90
Support	653	648	-4	-0.7%	-14	-97
Maintenance/ Technical	130	129	-0	-0.3%	-3	+4
General Support	782	778	-5	-0.6%	-18	-92
Health Care Assistants	7,108	7,067	-41	-0.6%	-36	+325
Home Help	95	92	-3	-3.0%	-2	-14
Care, other	1,703	1,701	-3	-0.2%	-5	+68
Patient & Client Care	8,906	8,859	-46	-0.5%	-43	+379

Older People

Feb 2021 (Dec 2020 figure: 13,415)	WTE Jan 2021	WTE Feb 2021	WTE change since Jan 21	% change since Jan 21	WTE change since Dec 20	WTE change since Feb 20
Overall	13,371	13,319	-52	-0.4%	-96	+227
Consultants	4	4	-0	-0.5%	-0	-0
Registrars	11	11			+2	+1
SHO/ Interns	12	11	-1	-10.2%	-3	-1
Medical/ Dental, other	88	86	-1	-1.6%	-18	+2
Medical & Dental	114	112	-3	-2.4%	-19	+1
Nurse/ Midwife Manager	747	755	+8	+1.1%	+9	+41
Nurse/ Midwife Specialist & AN/MP	38	38	-0	-0.2%	-0	+9
Staff Nurse/ Staff Midwife	2,637	2,641	+4	+0.1%	+17	+54
Public Health Nurse	13	13	-1	-6.6%	-1	+0
<i>Post-registration Nurse/ Midwife Student</i>				-100.0%	-1	-1
<i>Nursing/ Midwifery awaiting registration</i>	2	1	-0	-15.3%	+0	-1
Nursing/ Midwifery Student	2	1	-0	-15.3%	-0	-2
Nursing/ Midwifery other	4	4			+0	+3
Nursing & Midwifery	3,442	3,452	+11	+0.3%	+25	+106
Therapy Professions	310	319	+9	+2.8%	+23	+31
Health Science/ Diagnostics	5	5	-0	-1.2%	-0	+0
Social Care	3	3			+0	
Social Workers	102	102	-0	-0.1%	+2	+7
Psychologists	1	2	+1	+68.0%	+1	+0
Pharmacy	17	18	+0	+1.6%	+1	-0
H&SC, Other	2	2				+0
Health & Social Care Professionals	440	450	+10	+2.2%	+27	+38
Management (VIII & above)	79	79	-0	-0.2%	+0	+4
Administrative/ Supervisory (V to VII)	184	189	+5	+2.7%	+13	+25
Clerical (III & IV)	598	585	-13	-2.1%	-2	+15
Management & Administrative	861	853	-8	-0.9%	+11	+44
Support	799	798	-1	-0.2%	-4	-23
Maintenance/ Technical	94	94	+0	+0.1%	-1	-6
General Support	893	892	-1	-0.2%	-4	-29
Health Care Assistants	4,110	4,119	+9	+0.2%	+0	+87
Home Help	3,364	3,289	-75	-2.2%	-142	-33
Care, other	147	153	+6	+3.9%	+6	+13
Patient & Client Care	7,621	7,561	-60	-0.8%	-135	+67

Social Care Services Employment by CHO etc. Feb 2021

CHO 1

Feb 2021 (Dec 2020 figure: 3,464)	WTE Jan 2021	WTE Feb 2021	WTE change since Jan 21	% change since Jan 21	WTE change since Dec 20	WTE change since Feb 20
Overall	3,430	3,439	+9	+0.3%	-25	+103
Medical/ Dental, other	20	19	-1	-5.7%	-16	-2
Medical & Dental	20	19	-1	-5.7%	-16	-2
Nurse/ Midwife Manager	193	193	-0	-0.1%	-2	+0
Nurse/ Midwife Specialist & AN/MP	19	19	-0	-0.2%	+1	+3
Staff Nurse/ Staff Midwife	651	649	-1	-0.2%	+6	+14
Pre-registration Nurse/ Midwife Intern	4	19	+15	+362.5%	+16	+0
Pre-registration Nurse Intern (COVID-19)	5	6	+0	+0.4%	+6	+6
Nursing/ Midwifery awaiting registration	11	11				
Nursing/ Midwifery Student	20	35	+15	+70.9%	+18	+6
Nursing/ Midwifery other	5	5				+0
Nursing & Midwifery	888	901	+13	+1.4%	+23	+24
Therapy Professions	56	58	+2	+4.3%	+2	+2
Health Science/ Diagnostics	2	2	+0	+3.8%	+0	+0
Social Care	11	11	-0	-1.7%	-0	+3
Social Workers	35	35	+0	+1.0%	+1	+1
Psychologists	11	11	-0	-1.0%	+4	+7
H&SC, Other	10	10			+0	-3
Health & Social Care Professionals	125	127	+3	+2.0%	+8	+11
Management (VIII & above)	24	25	+0	+1.1%		+3
Administrative/ Supervisory (V to VII)	51	53	+2	+3.6%	+4	+12
Clerical (III & IV)	139	139	-1	-0.5%	-2	+2
Management & Administrative	215	216	+1	+0.7%	+2	+16
Support	170	168	-2	-1.4%	+0	-4
Maintenance/ Technical	12	12	+0	+3.7%	-1	-1
General Support	182	180	-2	-1.0%	-0	-5
Health Care Assistants	1,355	1,361	+6	+0.4%	+6	+27
Home Help	584	575	-9	-1.6%	-44	+34
Care, other	61	60	-1	-2.1%	-3	-3
Patient & Client Care	2,000	1,995	-5	-0.2%	-41	+58

CHO 2

Feb 2021 (Dec 2020 figure: 3,105)	WTE Jan 2021	WTE Feb 2021	WTE change since Jan 21	% change since Jan 21	WTE change since Dec 20	WTE change since Feb 20
Overall	3,076	3,070	-6	-0.2%	-35	+39
Consultants	3	3				
Registrars	2	2				-1
Medical/ Dental, other	12	12	-0	-0.7%	-0	-0
Medical & Dental	17	17	-0	-0.5%	-0	-1
Nurse/ Midwife Manager	144	150	+6	+4.3%	+6	+14
Nurse/ Midwife Specialist & AN/MP	8	8	-0	-0.9%	+0	-0
Staff Nurse/ Staff Midwife	469	470	+1	+0.1%	-4	+2
Public Health Nurse	1	1				+0
<i>Pre-registration Nurse Intern (COVID-19)</i>	<i>1</i>		<i>-1</i>	<i>-100.0%</i>		
Nursing/ Midwifery Student	1		-1	-100.0%	-1	
Nursing & Midwifery	623	629	+6	+1.0%	+1	+16
Therapy Professions	62	63	+0	+0.4%	+3	-5
Health Science/ Diagnostics	1	1				
Social Care	247	247	-1	-0.2%	+4	+25
Social Workers	36	37	+1	+3.8%	+1	+1
Psychologists	15	16	+0	+0.5%	+1	-1
Pharmacy	1	1				+0
H&SC, Other	9	11	+2	+20.9%	-0	-4
Health & Social Care Professionals	372	375	+3	+0.8%	+9	+16
Management (VIII & above)	18	19	+1	+5.6%	+1	+2
Administrative/ Supervisory (V to VII)	54	53	-1	-1.3%	-0	+4
Clerical (III & IV)	115	111	-4	-3.2%	-5	-10
Management & Administrative	187	183	-3	-1.8%	-4	-4
Support	95	96	+1	+0.5%	-3	-8
Maintenance/ Technical	32	32	+0	+0.2%	+0	+0
General Support	128	128	+1	+0.5%	-3	-8
Health Care Assistants	1,139	1,144	+5	+0.5%	-7	+32
Home Help	445	425	-20	-4.5%	-32	-24
Care, other	167	169	+3	+1.5%	+1	+12
Patient & Client Care	1,750	1,737	-12	-0.7%	-38	+19

CHO 3

Feb 2021 (Dec 2020 figure: 2,976)	WTE Jan 2021	WTE Feb 2021	WTE change since Jan 21	% change since Jan 21	WTE change since Dec 20	WTE change since Feb 20
Overall	2,980	2,993	+13	+0.4%	+17	+217
Consultants	2	2	-0	-0.5%	-1	+0
Medical/ Dental, other	7	7				+1
Medical & Dental	9	9	-0	-0.1%	-1	+1
Nurse/ Midwife Manager	140	141	+0	+0.2%	+2	+2
Nurse/ Midwife Specialist & AN/MP	13	13			-1	-0
Staff Nurse/ Staff Midwife	504	506	+2	+0.4%	+4	+19
Public Health Nurse	1	1	-0	-1.0%	-0	
Public Health Nurse	1	1	-0	-1.0%	-0	
Pre-registration Nurse/ Midwife Intern	8	8			-4	-4
Pre-registration Nurse Intern (COVID-19)				-100.0%		
Nursing/ Midwifery Student	8	8			+7	-4
Nursing/ Midwifery other	4	4				
Nursing & Midwifery	670	673	+2	+0.3%	+11	+17
Therapy Professions	113	109	-4	-3.9%	-4	+5
Health Science/ Diagnostics	3	2	-0	-4.7%	-0	+2
Social Care	273	278	+5	+1.8%	-6	+39
Social Workers	24	22	-2	-6.6%	-1	-1
Psychologists	21	20	-0	-1.2%	+0	+2
Pharmacy	1	1				
H&SC, Other	12	11	-1	-8.2%	-0	-0
Health & Social Care Professionals	446	443	-3	-0.6%	-12	+48
Management (VIII & above)	14	13	-0	-2.8%	-0	+1
Administrative/ Supervisory (V to VII)	62	64	+2	+3.8%	+2	+5
Clerical (III & IV)	111	111	-0	-0.1%	+4	+2
Management & Administrative	186	188	+2	+1.0%	+6	+9
Support	114	116	+2	+1.3%	-0	-4
Maintenance/ Technical	41	42	+1	+1.8%	+2	+6
General Support	156	158	+2	+1.4%	+1	+2
Health Care Assistants	1,108	1,111	+4	+0.3%	+11	+85
Home Help	215	214	-1	-0.3%	-3	+42
Care, other	191	197	+7	+3.5%	+4	+13
Patient & Client Care	1,513	1,523	+10	+0.6%	+12	+140

CHO 4

Feb 2021 (Dec 2020 figure: 5,486)	WTE Jan 2021	WTE Feb 2021	WTE change since Jan 21	% change since Jan 21	WTE change since Dec 20	WTE change since Feb 20
Overall	5,504	5,469	-35	-0.6%	-16	+129
Consultants	4	4				
Registrars	3	3				
SHO/ Interns	1	1				+1
Medical/ Dental, other	23	22	-1	-4.0%	-2	-1
Medical & Dental	30	29	-1	-3.0%	-2	+0
Nurse/ Midwife Manager	216	215	-1	-0.3%	+2	+3
Nurse/ Midwife Specialist & AN/MP	20	19	-1	-5.2%	-1	+1
Staff Nurse/ Staff Midwife	846	849	+3	+0.4%	+9	+17
Public Health Nurse	6	6				+2
Pre-registration Nurse/ Midwife Intern	8	9	+1	+8.7%	+3	+2
Pre-registration Nurse Intern (COVID-19)				-100.0%		
Post-registration Nurse/ Midwife Student				-100.0%	-1	-1
Nursing/ Midwifery awaiting registration	2	2				+2
Nursing/ Midwifery Student	10	11	+1	+7.0%	+1	+3
Nursing/ Midwifery other				-100.0%		-1
Nursing & Midwifery	1,098	1,100	+2	+0.2%	+11	+25
Therapy Professions	148	155	+6	+4.2%	+10	+3
Health Science/ Diagnostics	1	1				
Social Care	244	244	+0	+0.1%	+4	+15
Social Workers	38	39	+1	+1.9%	-1	+1
Psychologists	36	36	-0	-0.1%	-0	+2
Pharmacy	4	4	-0	-1.1%	-0	-0
H&SC, Other	10	10	-0	-1.0%	+0	+2
Health & Social Care Professionals	482	489	+7	+1.5%	+13	+24
Management (VIII & above)	38	38	-0	-0.3%	+1	+3
Administrative/ Supervisory (V to VII)	75	76	+0	+0.6%	-2	+3
Clerical (III & IV)	226	222	-4	-1.6%	+1	+11
Management & Administrative	339	335	-3	-1.0%	+0	+18
Support	251	248	-3	-1.2%	-4	+11
Maintenance/ Technical	19	19	-0	-0.2%	+1	+3
General Support	271	267	-3	-1.1%	-3	+13
Health Care Assistants	1,881	1,867	-14	-0.7%	+15	+97
Home Help	1,040	1,015	-25	-2.4%	-51	-71
Care, other	364	366	+2	+0.6%	+0	+23
Patient & Client Care	3,285	3,248	-37	-1.1%	-36	+49

CHO 5

Feb 2021 (Dec 2020 figure: 3,213)	WTE Jan 2021	WTE Feb 2021	WTE change since Jan 21	% change since Jan 21	WTE change since Dec 20	WTE change since Feb 20
Overall	3,237	3,233	-4	-0.1%	+20	+96
Consultants	1	1				-0
Medical/ Dental, other	15	15	+1	+4.0%	+1	+6
Medical & Dental	16	16	+1	+3.8%	+1	+6
Nurse/ Midwife Manager	157	159	+2	+1.2%	+0	+6
Nurse/ Midwife Specialist & AN/MP	8	8	-0	-0.8%	+2	+4
Staff Nurse/ Staff Midwife	477	475	-3	-0.6%	-2	-8
Public Health Nurse	9	8	-1	-10.8%	-1	-1
Pre-registration Nurse/ Midwife Intern	8	9	+1	+16.3%	+9	+4
Pre-registration Nurse Intern (COVID-19)	1	1			+1	+1
Nursing/ Midwifery awaiting registration				-100.0%	-2	-6
Nursing/ Midwifery Student	9	10	+1	+14.4%	+9	-2
Nursing Education/Clinical		1	+1	-100.0%	+1	+1
Nursing/ Midwifery other		1	+1	-100.0%	+1	+1
Nursing & Midwifery	660	660	+0	+0.0%	+9	+1
Therapy Professions	102	105	+3	+3.2%	+7	+1
Social Care	143	139	-4	-2.6%	-3	-7
Social Workers	28	29	+1	+3.2%	+1	+5
Psychologists	20	20	-0	-2.3%	+1	+5
Pharmacy	1	1			+1	
Pharmacy	1	1			+0	
H&SC, Other	5	5	-0	-1.7%	-0	-3
Health & Social Care Professionals	300	299	-0	-0.0%	+5	+2
Management (VIII & above)	17	21	+4	+24.2%	+4	+5
Administrative/ Supervisory (V to VII)	62	68	+6	+9.5%	+10	+16
Clerical (III & IV)	97	101	+4	+4.0%	+8	+12
Management & Administrative	176	189	+14	+7.9%	+22	+32
Support	94	94	+0	+0.4%	-1	-37
Maintenance/ Technical	10	10	+0	+0.7%	-1	-5
General Support	104	105	+0	+0.4%	-2	-42
Health Care Assistants	1,166	1,168	+2	+0.2%	-12	+100
Home Help	652	630	-22	-3.4%	-9	-9
Care, other	165	166	+1	+0.8%	+5	+7
Patient & Client Care	1,983	1,964	-19	-0.9%	-16	+97

CHO 6

Feb 2021 (Dec 2020 figure: 2,020)	WTE Jan 2021	WTE Feb 2021	WTE change since Jan 21	% change since Jan 21	WTE change since Dec 20	WTE change since Feb 20
Overall	2,016	2,034	+19	+0.9%	+14	+22
Consultants	3	3				+0
Registrars	3	3	-0	-5.1%	+2	+2
Medical/ Dental, other	4	4	+0	+2.7%	+0	-1
Medical & Dental	10	10	-0	-0.5%	+2	+1
Nurse/ Midwife Manager	102	105	+3	+2.6%	-1	-5
Nurse/ Midwife Specialist & AN/MP	1	1				
Staff Nurse/ Staff Midwife	350	344	-6	-1.6%	-4	-6
Nursing & Midwifery	453	450	-3	-0.7%	-5	-11
Therapy Professions	92	95	+3	+3.2%	+6	+4
Social Care	379	365	-14	-3.6%	+4	+32
Social Workers	21	20	-1	-3.9%	-0	-0
Psychologists	14	16	+2	+17.9%	+1	-0
Pharmacy	3	3			-0	-0
H&SC, Other	1	1	+0	+32.7%	+0	+0
Health & Social Care Professionals	509	500	-9	-1.7%	+12	+35
Management (VIII & above)	24	35	+12	+49.7%	+0	-1
Administrative/ Supervisory (V to VII)	56	77	+21	+37.0%	+3	-0
Clerical (III & IV)	81	92	+10	+12.6%	+3	+7
Management & Administrative	161	204	+43	+26.5%	+7	+5
Support	124	124	+0	+0.2%	-3	-21
Maintenance/ Technical	13	13			-1	-3
General Support	137	137	+0	+0.1%	-4	-24
Health Care Assistants	492	490	-1	-0.2%	+11	+11
Care, other	254	243	-11	-4.5%	-7	+4
Patient & Client Care	746	734	-13	-1.7%	+4	+16

CHO 7

Feb 2021 (Dec 2020 figure: 4,125)	WTE Jan 2021	WTE Feb 2021	WTE change since Jan 21	% change since Jan 21	WTE change since Dec 20	WTE change since Feb 20
Overall	4,124	4,089	-35	-0.8%	-36	+94
Consultants	1	1				
Registrars	3	3	+0	+6.8%		
SHO/ Interns	9	9	+0	+1.9%		
Medical/ Dental, other	3	3				-2
Medical & Dental	15	16	+0	+2.4%		-2
Nurse/ Midwife Manager	207	208	+1	+0.4%	+3	+12
Nurse/ Midwife Specialist & AN/MP	7	7	+0	+0.4%	+0	-1
Staff Nurse/ Staff Midwife	625	620	-4	-0.7%	+1	+28
<i>Pre-registration Nurse/ Midwife Intern</i>	7	7			+7	-1
<i>Nursing/ Midwifery awaiting registration</i>	2	1	-0	-15.3%	+1	+1
Nursing/ Midwifery Student	9	8	-0	-2.7%	+7	+1
Nursing/ Midwifery other	2	2				+1
Nursing & Midwifery	849	845	-4	-0.4%	+11	+41
Therapy Professions	155	146	-9	-6.0%	-6	+4
Health Science/ Diagnostics	3	3				
Social Care	386	385	-0	-0.1%	-4	+23
Social Workers	47	46	-0	-0.9%	+2	+1
Psychologists	31	29	-1	-4.9%	-3	-0
Pharmacy	6	6	+1	+11.2%	+0	-2
H&SC, Other	3	3				
Health & Social Care Professionals	629	618	-11	-1.7%	-10	+25
Management (VIII & above)	51	52	+2	+3.0%	+2	+9
Administrative/ Supervisory (V to VII)	106	106	+0	+0.0%	-0	+15
Clerical (III & IV)	139	137	-2	-1.2%	-1	+2
Management & Administrative	295	295	-0	-0.1%	+1	+27
Support	270	267	-3	-1.2%	-7	-4
Maintenance/ Technical	33	34	+0	+0.4%	-1	+2
General Support	304	301	-3	-1.0%	-8	-2
Health Care Assistants	1,499	1,473	-26	-1.7%	-31	-8
Home Help	127	130	+2	+1.9%	-2	-6
Care, other	405	411	+6	+1.6%	+3	+21
Patient & Client Care	2,031	2,014	-17	-0.8%	-29	+6

CHO 8

Feb 2021 (Dec 2020 figure: 3,689)	WTE Jan 2021	WTE Feb 2021	WTE change since Jan 21	% change since Jan 21	WTE change since Dec 20	WTE change since Feb 20
Overall	3,717	3,700	-16	-0.4%	+11	+85
Consultants	1		-1	-100.0%	-1	-1
Registrars	1	1				
Medical/ Dental, other	12	12			-0	
Medical & Dental	14	13	-1	-7.2%	-1	-1
Nurse/ Midwife Manager	211	212	+1	+0.6%	+4	+16
Nurse/ Midwife Specialist & AN/MP	10	10	+0	+2.7%	+0	+1
Staff Nurse/ Staff Midwife	563	579	+16	+2.9%	+12	+13
Public Health Nurse	4	4	+0	+0.8%	+0	+1
Pre-registration Nurse/ Midwife Intern	12	6	-7	-53.4%	+6	-8
Pre-registration Nurse Intern (COVID-19)				-100.0%		
Nursing/ Midwifery Student	12	6	-7	-53.4%	+2	-8
Nursing/ Midwifery other	8	9	+1	+7.0%	+0	+2
Nursing & Midwifery	809	820	+12	+1.5%	+19	+25
Therapy Professions	124	122	-2	-1.3%	-0	+10
Health Science/ Diagnostics	2	2				
Social Care	383	377	-6	-1.5%	-2	+23
Social Workers	29	30	+1	+2.5%	+1	+1
Psychologists	24	24	+1	+2.5%	+2	-0
Pharmacy	3	3	+0	+11.9%	+1	+1
H&SC, Other	6	6	+1	+9.8%	+0	-1
Health & Social Care Professionals	570	565	-5	-0.9%	+1	+33
Management (VIII & above)	21	21	-0	-0.3%	+1	+6
Administrative/ Supervisory (V to VII)	79	76	-3	-4.2%	-2	-4
Clerical (III & IV)	163	158	-5	-3.0%	-1	+0
Management & Administrative	263	254	-8	-3.2%	-3	+2
Support	67	67	-1	-0.8%	+0	-4
Maintenance/ Technical	38	36	-2	-4.8%	-2	-4
General Support	105	103	-2	-2.3%	-2	-8
Health Care Assistants	1,424	1,416	-8	-0.6%	-0	+44
Home Help	396	393	-2	-0.6%	-4	-13
Care, other	136	135	-1	-0.5%	+0	+2
Patient & Client Care	1,956	1,944	-11	-0.6%	-4	+33

CHO 9

Feb 2021 (Dec 2020 figure: 4,199)	WTE Jan 2021	WTE Feb 2021	WTE change since Jan 21	% change since Jan 21	WTE change since Dec 20	WTE change since Feb 20
Overall	4,186	4,193	+7	+0.2%	-6	+132
Consultants	13	13	-0	-0.2%	-0	+1
Registrars	8	9	+1	+9.7%	+2	-1
SHO/ Interns	11	8	-3	-25.9%	-5	-2
Medical/ Dental, other	7	7				
Medical & Dental	39	37	-2	-5.3%	-3	-2
Nurse/ Midwife Manager	274	274	+1	+0.3%	-2	+4
Nurse/ Midwife Specialist & AN/MP	18	20	+2	+11.2%	+2	+6
Staff Nurse/ Staff Midwife	745	752	+7	+0.9%	+5	+18
Public Health Nurse				-100.0%		-0
Pre-registration Nurse/ Midwife Intern	17	18	+1	+7.7%	+10	+2
Pre-registration Nurse Intern (COVID-19)	5	3	-2	-33.6%	+3	+3
Nursing/ Midwifery Student	21	21	-0	-1.1%	+8	+5
Nursing/ Midwifery other	9	9	-0	-0.1%	+0	+1
Nursing & Midwifery	1,067	1,076	+9	+0.9%	+13	+34
Therapy Professions	267	266	-0	-0.2%	+9	+31
Health Science/ Diagnostics	15	15			+1	
Social Care	747	752	+5	+0.6%	+11	+57
Social Workers	73	73	-0	-0.6%	-0	+6
Psychologists	66	62	-4	-6.6%	-2	+5
Pharmacy	6	6				+1
H&SC, Other	19	19	+0	+1.1%	+0	+1
Health & Social Care Professionals	1,193	1,192	-1	-0.0%	+19	+101
Management (VIII & above)	49	49	-1	-1.2%	-1	+3
Administrative/ Supervisory (V to VII)	126	129	+3	+2.4%	+8	+22
Clerical (III & IV)	161	160	-1	-0.7%	-10	-4
Management & Administrative	336	337	+1	+0.4%	-4	+21
Support	265	265	+1	+0.3%	+0	-48
Maintenance/ Technical	24	24			-1	+0
General Support	289	290	+1	+0.3%	-1	-48
Health Care Assistants	1,154	1,154	+1	+0.1%	-28	+23
Care, other	108	105	-3	-2.7%	-2	+3
Patient & Client Care	1,262	1,260	-2	-0.2%	-30	+26

other Community Services

Feb 2021 (Dec 2020 figure: 81)	WTE Jan 2021	WTE Feb 2021	WTE change since Jan 21	% change since Jan 21	WTE change since Dec 20	WTE change since Feb 20
Overall	82	81	-1	-1.5%	-0	+6
Health Science/ Diagnostics				-100.0%		
Health & Social Care Professionals				-100.0%		
Management (VIII & above)	18	18	-0	-0.3%	+0	-1
Administrative/ Supervisory (V to VII)	24	25	+1	+2.7%	+1	+1
Clerical (III & IV)	39	38	-2	-4.7%	-1	+6
Management & Administrative	82	81	-1	-1.5%	-0	+6
Health Care Assistants	0	0				+0
Patient & Client Care	0	0				+0

Social Care Services Employment by CHO & Admin : Feb 2021

Feb 2021 (Dec 2020 figure: 32,359)	WTE Jan 2021	WTE Feb 2021	WTE change since Jan 21	% change since Jan 21	WTE change since Dec 20	WTE change since Feb 20
Overall	32,352	32,302	-49	-0.2%	-57	+925
CHO 1	3,430	3,439	+9	+0.3%	-25	+103
Health Service Executive	1,795	1,783	-12	-0.7%	-25	+26
Bros. of Charity, West Region	1,281	1,287	+6	+0.5%	-10	+13
Section 38 Voluntary Agencies	1,281	1,287	+6	+0.5%	-10	+13
CHO 2	3,076	3,070	-6	-0.2%	-35	+39
Health Service Executive	1,187	1,202	+14	+1.2%	+28	+120
Bros. of Charity, Clare	374	377	+4	+1.0%	+5	+38
Bros. of Charity, Limerick	580	574	-6	-1.0%	-18	+52
Daughters of Charity, Limerick	550	550	-0	-0.1%	+1	+8
Daughters of Charity, Roscrea	289	290	+2	+0.5%	+1	-1
Section 38 Voluntary Agencies	1,793	1,792	-1	-0.0%	-11	+97
CHO 3	2,980	2,993	+13	+0.4%	+17	+217
Health Service Executive	3,235	3,219	-16	-0.5%	-24	+19
Bros. of Charity, Southern	785	783	-2	-0.3%	+7	+49
Cope Foundation	1,155	1,146	-8	-0.7%	-0	+51
St. John of God, Kerry	330	321	-8	-2.6%	+1	+11
Section 38 Voluntary Agencies	2,269	2,250	-19	-0.8%	+8	+110
CHO 4	5,504	5,469	-35	-0.6%	-16	+129
Health Service Executive	2,070	2,067	-2	-0.1%	+23	+46
Bros. of Charity, Waterford	666	667	+1	+0.1%	-1	+36
Carriglea Cairde Services	216	215	-1	-0.6%	+1	+3
St. Patrick's, Kilkenny	285	284	-1	-0.3%	-2	+10
Section 38 Voluntary Agencies	1,167	1,166	-2	-0.1%	-3	+50
CHO 5	3,237	3,233	-4	-0.1%	+20	+96
Health Service Executive	574	579	+5	+0.9%	+6	+15
Children's Sunshine Home	56	57	+0	+0.4%	+1	-1
Leopardstown Park Hospital	207	203	-3	-1.6%	-3	-7
Royal Hospital, Donnybrook, Dublin	269	269	-0	-0.1%	+1	-9
St. John of God (IDS)	423	459	+35	+8.3%	-9	+2
Sunbeam House Services	486	468	-18	-3.7%	+19	+22
Section 38 Voluntary Agencies	1,442	1,456	+14	+1.0%	+8	+7
CHO 6	2,016	2,034	+19	+0.9%	+14	+22
Health Service Executive	1,158	1,143	-15	-1.3%	-14	+33
Cheeverstown House	400	395	-6	-1.4%	+0	-3
Kare, Newbridge, Co Kildare	376	380	+3	+0.9%	+3	+16
Peamount Hospital (Newcastle)	482	475	-6	-1.3%	-7	-24
Stewart's Hospital, (Palmerstown)	916	915	-1	-0.2%	+1	+58
St. John of God Liffey Services	792	782	-10	-1.2%	-19	+14
Section 38 Voluntary Agencies	2,966	2,946	-20	-0.7%	-22	+61
CHO 7	4,124	4,089	-35	-0.8%	-36	+94
Health Service Executive	2,090	2,090	+0	+0.0%	-4	-2
Muiriosa Foundation, Laois/Offaly	331	335	+4	+1.1%	+14	+35
Muiriosa Foundation, Longford/Westmeath	285	287	+2	+0.6%	+2	+22

Feb 2021 (Dec 2020 figure: 32,359)	WTE Jan 2021	WTE Feb 2021	WTE change since Jan 21	% change since Jan 21	WTE change since Dec 20	WTE change since Feb 20
Overall	32,352	32,302	-49	-0.2%	-57	+925
Muiriosa Foundation, South Kildare	341	342	+1	+0.2%	+0	+12
St. John of God, Drumcar	670	646	-23	-3.5%	-2	+18
Section 38 Voluntary Agencies	1,627	1,610	-17	-1.0%	+15	+87
CHO 8	3,716	3,700	-16	-0.4%	+11	+85
Health Service Executive	1,122	1,122	+0	+0.0%	+3	+36
Central Remedial Clinic	299	298	-1	-0.3%	+2	+15
Daughters of Charity, Dublin	1,072	1,075	+4	+0.3%	+12	+39
Incorporated Orthopaedic Hospital	267	269	+2	+0.7%	+2	+43
St. Michael's House, Dublin	1,427	1,428	+2	+0.1%	-25	-0
Section 38 Voluntary Agencies	3,064	3,070	+6	+0.2%	-9	+96
CHO 9	4,186	4,193	+7	+0.2%	-6	+132
other Community Services	82	81	-1	-1.5%	-0	+6

Disability Services Employment by CHO & Admin: Feb 2021

Feb 2021 (Dec 2020 figure: 18,944)	WTE Jan 2021	WTE Feb 2021	WTE change since Jan 21	% change since Jan 21	WTE change since Dec 20	WTE change since Feb 20
Overall	18,981	18,983	+2	+0.0%	+39	+698
CHO 1	1,559	1,575	+16	+1.0%	+28	+52
Health Service Executive	219	221	+2	+0.8%	+3	+14
Bros. of Charity, West Region	1,281	1,287	+6	+0.5%	-10	+13
Section 38 Voluntary Agencies	1,281	1,287	+6	+0.5%	-10	+13
CHO 2	1,500	1,508	+8	+0.5%	-7	+27
Health Service Executive	148	146	-3	-1.8%	+1	+25
Bros. of Charity, Clare	374	377	+4	+1.0%	+5	+38
Bros. of Charity, Limerick	580	574	-6	-1.0%	-18	+52
Daughters of Charity, Limerick	550	550	-0	-0.1%	+1	+8
Daughters of Charity, Roscrea	289	290	+2	+0.5%	+1	-1
Section 38 Voluntary Agencies	1,793	1,792	-1	-0.0%	-11	+97
CHO 3	1,941	1,938	-3	-0.2%	-10	+122
Health Service Executive	317	319	+2	+0.6%	+6	+18
Bros. of Charity, Southern	785	783	-2	-0.3%	+7	+49
Cope Foundation	1,155	1,146	-8	-0.7%	-0	+51
St. John of God, Kerry	330	321	-8	-2.6%	+1	+11
Section 38 Voluntary Agencies	2,269	2,250	-19	-0.8%	+8	+110
CHO 4	2,586	2,569	-17	-0.7%	+14	+128
Health Service Executive	399	419	+19	+4.9%	+24	+32
Bros. of Charity, Waterford	666	667	+1	+0.1%	-1	+36
Carriglea Cairde Services	216	215	-1	-0.6%	+1	+3
St. Patrick's, Kilkenny	285	284	-1	-0.3%	-2	+10
Section 38 Voluntary Agencies	1,167	1,166	-2	-0.1%	-3	+50
CHO 5	1,567	1,585	+18	+1.1%	+22	+82
Health Service Executive	244	244	-0	-0.0%	+0	+15
Children's Sunshine Home	56	57	+0	+0.4%	+1	-1
St. John of God (IDS)	423	459	+35	+8.3%	-9	+2
Sunbeam House Services	486	468	-18	-3.7%	+19	+22
Section 38 Voluntary Agencies	966	983	+17	+1.8%	+10	+23
CHO 6	1,210	1,227	+17	+1.4%	+11	+38
Health Service Executive	136	129	-7	-5.1%	-6	+17
Cheeverstown House	400	395	-6	-1.4%	+0	-3
Kare, Newbridge, Co Kildare	376	380	+3	+0.9%	+3	+16
Peamount Hospital (Newcastle)	482	475	-6	-1.3%	-7	-24
Stewart's Hospital, (Palmerstown)	916	915	-1	-0.2%	+1	+58
St. John of God Liffey Services	792	782	-10	-1.2%	-19	+14
Section 38 Voluntary Agencies	2,966	2,946	-20	-0.7%	-22	+61
CHO 7	3,102	3,075	-26	-0.9%	-28	+78
Health Service Executive	608	608	+0	+0.1%	-3	+1
Muiriosa Foundation, Laois/Offaly	331	335	+4	+1.1%	+14	+35
Muiriosa Foundation, Longford/Westmeath	285	287	+2	+0.6%	+2	+21
Muiriosa Foundation, South Kildare	341	342	+1	+0.2%	+0	+12
St. John of God, Drumcar	670	646	-23	-3.5%	-2	+18

Feb 2021 (Dec 2020 figure: 18,944)	WTE Jan 2021	WTE Feb 2021	WTE change since Jan 21	% change since Jan 21	WTE change since Dec 20	WTE change since Feb 20
Overall	18,981	18,983	+2	+0.0%	+39	+698
Section 38 Voluntary Agencies	1,627	1,610	-17	-1.0%	+15	+87
CHO 8	2,234	2,218	-16	-0.7%	+13	+88
Health Service Executive	479	481	+2	+0.5%	+8	+29
Central Remedial Clinic	299	298	-1	-0.3%	+2	+15
Daughters of Charity, Dublin	1,072	1,075	+4	+0.3%	+12	+39
St. Michael's House, Dublin	1,427	1,428	+2	+0.1%	-25	-0
Section 38 Voluntary Agencies	2,797	2,801	+4	+0.2%	-11	+53
CHO 9	3,276	3,282	+7	+0.2%	-2	+82
other Community Services	6	6	-0	-0.5%	-0	+1

Older Persons Services Employment by CHO & Admin: Feb 2021

Feb 2021 (Dec 2020 figure: 13,415)	WTE Jan 2021	WTE Feb 2021	WTE change since Jan 21	% change since Jan 21	WTE change since Dec 20	WTE change since Feb 20
Overall	13,371	13,319	-52	-0.4%	-96	+227
CHO 1	1,871	1,864	-7	-0.4%	-53	+51
CHO 2	1,576	1,562	-14	-0.9%	-28	+12
CHO 3	1,039	1,056	+17	+1.6%	+27	+95
CHO 4	2,918	2,900	-18	-0.6%	-30	+1
CHO 5	1,671	1,649	-22	-1.3%	-2	+15
Health Service Executive	330	335	+5	+1.5%	+6	+0
Leopardstown Park Hospital	207	203	-3	-1.6%	-3	-7
Royal Hospital, Donnybrook, Dublin	269	269	-0	-0.1%	+1	-9
Section 38 Voluntary Agencies	476	472	-3	-0.7%	-2	-16
CHO 6	806	807	+1	+0.2%	+3	-16
CHO 7	1,022	1,014	-8	-0.8%	-8	+16
CHO 8	1,482	1,482	+0	+0.0%	-2	-2
Health Service Executive	644	641	-2	-0.3%	-6	+8
Incorporated Orthopaedic Hospital	267	269	+2	+0.7%	+2	+43
Section 38 Voluntary Agencies	267	269	+2	+0.7%	+2	+43
CHO 9	911	910	-0	-0.0%	-4	+50
other Community Services	76	75	-1	-1.6%	-0	+6

Social Care Services Employment by CHO etc. Feb 2021

Bros. of Charity, Clare

Feb 2021 (Dec 2020 figure: 372)	WTE Jan 2021	WTE Feb 2021	WTE change since Jan 21	% change since Jan 21	WTE change since Dec 20	WTE change since Feb 20
Overall	374	377	+4	+1.0%	+5	+38
Consultants	0	0	-0	-9.1%	-0	+0
Medical & Dental	0	0	-0	-9.1%	-0	+0
Staff Nurse/ Staff Midwife	3	3	+0	+0.7%	+1	+1
<i>Pre-registration Nurse Intern (COVID-19)</i>				-100.0%		
Nursing/ Midwifery Student				-100.0%	-1	
Nursing & Midwifery	3	3	+0	+0.7%	-0	+1
Social Care	86	83	-2	-2.7%	-2	+2
Social Workers	3	3	+0	+3.4%		+0
Psychologists	3	3				
H&SC, Other	4	4				
Health & Social Care Professionals	95	93	-2	-2.3%	-2	+3
Management (VIII & above)	1	1				
Administrative/ Supervisory (V to VII)	5	5			+0	+0
Clerical (III & IV)	5	5	+1	+12.0%	+0	+1
Management & Administrative	11	11	+1	+5.1%	+0	+1
Health Care Assistants	232	238	+5	+2.4%	+5	+33
Care, other	33	33	-0	-0.2%	+2	+1
Patient & Client Care	265	271	+5	+2.0%	+7	+34

Feb 2021 (Dec 2020 figure: 592)	WTE Jan 2021	WTE Feb 2021	WTE change since Jan 21	% change since Jan 21	WTE change since Dec 20	WTE change since Feb 20
Overall	580	574	-6	-1.0%	-18	+52
Consultants	1	1			-1	
Medical & Dental	1	1			-1	
Nurse/ Midwife Manager	28	29	+1	+2.2%	+1	+3
Nurse/ Midwife Specialist & AN/MP	4	4				
Staff Nurse/ Staff Midwife	94	91	-3	-3.3%	-7	+5
Nursing & Midwifery	126	123	-2	-2.0%	-6	+8
Therapy Professions	15	13	-2	-13.6%	-2	+0
Social Care	103	100	-3	-2.5%	-4	+17
Social Workers	5	5	+0	+2.1%	+0	+0
Psychologists	6	6				-0
H&SC, Other	2	1	-1	-60.3%		-0
Health & Social Care Professionals	130	125	-5	-4.1%	-6	+17
Management (VIII & above)	2	2				
Administrative/ Supervisory (V to VII)	6	7	+1	+16.0%	+1	+1
Clerical (III & IV)	11	10	-1	-7.7%	-1	-2
Management & Administrative	19	19	+0	+0.5%	+0	-1
Support	5	5	+0	+1.9%	-1	-3
Maintenance/ Technical	2	2				
General Support	7	7	+0	+1.4%	-1	-3
Health Care Assistants	203	203	-0	-0.0%	-1	+23
Care, other	94	96	+2	+2.2%	-3	+7
Patient & Client Care	297	299	+2	+0.7%	-4	+30

Feb 2021 (Dec 2020 figure: 776)	WTE Jan 2021	WTE Feb 2021	WTE change since Jan 21	% change since Jan 21	WTE change since Dec 20	WTE change since Feb 20
Overall	785	783	-2	-0.3%	+7	+49
Nurse/ Midwife Manager	15	12	-3	-18.8%	-3	-4
Nurse/ Midwife Specialist & AN/MP	3	3				
Staff Nurse/ Staff Midwife	56	56	+0	+0.3%	+0	-4
Nursing & Midwifery	74	71	-3	-3.5%	-2	-8
Therapy Professions	46	47	+1	+1.4%	+1	-1
Social Care	126	128	+1	+1.1%	+5	+3
Social Workers	17	18	+1	+6.0%	+0	+1
Psychologists	21	21	-0	-0.4%	-0	+2
Health & Social Care Professionals	210	213	+3	+1.4%	+7	+5
Management (VIII & above)	8	8				-0
Administrative/ Supervisory (V to VII)	10	11	+1	+9.9%	+1	+1
Clerical (III & IV)	35	34	-1	-2.8%	-1	+2
Management & Administrative	53	53	+0	+0.1%	-0	+3
Support	13	12	-1	-7.6%	-2	-2
Maintenance/ Technical	3	3	-0	-1.2%		+1
General Support	16	15	-1	-6.6%	-2	-1
Health Care Assistants	231	227	-4	-1.9%	+5	+32
Care, other	201	204	+3	+1.3%	-0	+17
Patient & Client Care	433	431	-2	-0.4%	+5	+49

Feb 2021 (Dec 2020 figure: 668)	WTE Jan 2021	WTE Feb 2021	WTE change since Jan 21	% change since Jan 21	WTE change since Dec 20	WTE change since Feb 20
Overall	666	667	+1	+0.1%	-1	+36
Consultants	1	1				-0
Medical & Dental	1	1				-0
Nurse/ Midwife Manager	23	22	-1	-4.2%	-0	-2
Staff Nurse/ Staff Midwife	48	47	-1	-1.9%	-2	-1
<i>Pre-registration Nurse/ Midwife Intern</i>	6	6			+6	+3
Nursing/ Midwifery Student	6	6			+6	+3
Nursing & Midwifery	78	76	-2	-2.4%	+4	-1
Therapy Professions	2	2			+1	-1
Social Care	70	69	-1	-1.0%	-1	+4
Social Workers	8	7	-1	-15.3%	-1	-2
Psychologists	4	4				-1
H&SC, Other	4	4	+0	+2.5%	+0	-1
Health & Social Care Professionals	88	86	-2	-2.1%	-1	-0
Management (VIII & above)	5	5	+0	+1.0%	-0	+0
Administrative/ Supervisory (V to VII)	16	16	+0	+0.4%	+0	+3
Clerical (III & IV)	26	25	-1	-3.5%	-2	+3
Management & Administrative	47	47	-1	-1.7%	-1	+6
Support	2	1	-0	-5.3%	-0	-0
Maintenance/ Technical	3	3				
General Support	4	4	-0	-1.8%	-0	-0
Health Care Assistants	353	356	+4	+1.1%	-6	+28
Care, other	96	97	+2	+1.6%	+4	+3
Patient & Client Care	448	454	+5	+1.2%	-2	+31

Carriglea Cairde Services

Feb 2021 (Dec 2020 figure: 214)	WTE Jan 2021	WTE Feb 2021	WTE change since Jan 21	% change since Jan 21	WTE change since Dec 20	WTE change since Feb 20
Overall	216	215	-1	-0.6%	+1	+3
Nurse/ Midwife Manager	13	13	-0	-0.3%	+0	+0
Staff Nurse/ Staff Midwife	26	24	-2	-7.0%	-3	-0
<i>Pre-registration Nurse/ Midwife Intern</i>				-100.0%		-2
Nursing/ Midwifery Student				-100.0%		-2
Nursing & Midwifery	39	37	-2	-4.8%	-3	-2
Social Care	31	29	-2	-6.7%	-2	-7
Health & Social Care Professionals	31	29	-2	-6.7%	-2	-7
Management (VIII & above)	2	2				
Administrative/ Supervisory (V to VII)	3	3				+0
Clerical (III & IV)	6	6	-0	-0.6%	-0	+0
Management & Administrative	11	11	-0	-0.4%	-0	+0
Support	7	6	-1	-8.0%	-0	+2
Maintenance/ Technical	1	1				
General Support	8	8	-1	-6.6%	-0	+2
Health Care Assistants	82	86	+3	+3.8%	+6	+14
Care, other	44	45	+0	+0.2%	-0	-4
Patient & Client Care	127	130	+3	+2.5%	+5	+10

Central Remedial Clinic

Feb 2021 (Dec 2020 figure: 296)	WTE Jan 2021	WTE Feb 2021	WTE change since Jan 21	% change since Jan 21	WTE change since Dec 20	WTE change since Feb 20
Overall	299	298	-1	-0.3%	+2	+15
Consultants	1	1				
Medical/ Dental, other	0	0				
Medical & Dental	2	2				
Nurse/ Midwife Manager	2	2				
Nurse/ Midwife Specialist & AN/MP	2	2				+1
Staff Nurse/ Staff Midwife	4	4			-1	
Nursing/ Midwifery other	1	1				+1
Nursing & Midwifery	8	8			-1	+2
Therapy Professions	79	78	-1	-1.3%	+0	+1
Health Science/ Diagnostics	14	14			+1	
Social Workers	9	9			+1	+1
Psychologists	13	13				+2
Health & Social Care Professionals	115	114	-1	-0.9%	+2	+4
Management (VIII & above)	7	7				
Administrative/ Supervisory (V to VII)	14	14	+0	+0.0%	-1	-1
Clerical (III & IV)	34	34				+2
Management & Administrative	56	56			-1	+1
Support	12	13	+1	+8.1%	+1	-2
Maintenance/ Technical	2	2				+1
General Support	14	15	+1	+7.0%	+1	-1
Health Care Assistants	59	58	-1	-1.7%	-0	+3
Care, other	45	45	-0	-0.0%	+1	+7
Patient & Client Care	104	103	-1	-1.0%	+1	+9

Feb 2021 (Dec 2020 figure: 395)	WTE Jan 2021	WTE Feb 2021	WTE change since Jan 21	% change since Jan 21	WTE change since Dec 20	WTE change since Feb 20
Overall	400	395	-6	-1.4%	+0	-3
Consultants	0	0				
Medical/ Dental, other	1	1				
Medical & Dental	1	1				
Nurse/ Midwife Manager	26	25	-1	-3.8%	-2	-1
Nurse/ Midwife Specialist & AN/MP	2	2				
Staff Nurse/ Staff Midwife	111	107	-4	-3.2%	+2	+1
Nursing & Midwifery	138	134	-5	-3.2%	-1	+0
Therapy Professions	13	13				+1
Social Care	35	37	+3	+7.2%	+3	+2
Social Workers	5	5			+1	-1
Psychologists	4	3	-1	-25.0%	-2	-2
Pharmacy	0	0				-0
H&SC, Other	2	2				
Health & Social Care Professionals	59	60	+2	+2.5%	+2	+1
Management (VIII & above)	3	3				+1
Administrative/ Supervisory (V to VII)	15	14	-2	-9.9%	-1	-1
Clerical (III & IV)	12	12				+1
Management & Administrative	31	29	-2	-4.9%	-1	+1
Support	27	27			-0	-0
Maintenance/ Technical	4	4				
General Support	30	30	+0	+0.0%	-0	-0
Health Care Assistants	129	128	-1	-0.8%	-1	-5
Care, other	12	12			+2	+0
Patient & Client Care	141	140	-1	-0.7%	+1	-5

Children's Sunshine Home

Feb 2021 (Dec 2020 figure: 56)	WTE Jan 2021	WTE Feb 2021	WTE change since Jan 21	% change since Jan 21	WTE change since Dec 20	WTE change since Feb 20
Overall	56	57	+0	+0.4%	+1	-1
Nurse/ Midwife Manager	8	8				
Staff Nurse/ Staff Midwife	18	18				-1
Nursing & Midwifery	26	26				-1
Therapy Professions	2	2			+1	-0
Social Workers	1		-1	-100.0%	-1	-1
Health & Social Care Professionals	2	2	-1	-33.9%	-0	-1
Management (VIII & above)	2	3	+1	+50.0%	+1	
Administrative/ Supervisory (V to VII)	4	4				
General Administrative (III & IV)	1	1				
Clerical (III & IV)	1	1				
Management & Administrative	7	8	+1	+15.0%	+1	
Support	3	3				
General Support	3	3				
Health Care Assistants	13	13				-1
Care, other	5	5				+2
Patient & Client Care	18	18				+1

Feb 2021 (Dec 2020 figure: 1,147)	WTE Jan 2021	WTE Feb 2021	WTE change since Jan 21	% change since Jan 21	WTE change since Dec 20	WTE change since Feb 20
Overall	1,155	1,146	-8	-0.7%	-0	+51
Nurse/ Midwife Manager	42	42				+1
Nurse/ Midwife Specialist & AN/MP	11	11				+1
Staff Nurse/ Staff Midwife	180	180			+3	+10
Pre-registration Nurse/ Midwife Intern	8	8			+2	+2
Pre-registration Nurse Intern (COVID-19)				-100.0%		
Nursing/ Midwifery Student	8	8			+0	+2
Nursing/ Midwifery other				-100.0%		-1
Nursing & Midwifery	241	241			+3	+14
Therapy Professions	37	37				-1
Social Care	43	43				+11
Social Workers	9	9				
Psychologists	11	11				+1
H&SC, Other	3	3				
Health & Social Care Professionals	102	102				+12
Management (VIII & above)	7	7				+1
Administrative/ Supervisory (V to VII)	23	23				+4
Clerical (III & IV)	26	26				+2
Management & Administrative	55	55				+7
Support	78	78				+1
Maintenance/ Technical	7	7			+0	+1
General Support	85	85				+2
Health Care Assistants	591	583	-8	-1.4%	-4	+15
Care, other	81	81				+1
Patient & Client Care	672	663	-8	-1.3%	-4	+16

Daughters of Charity, Dublin

Feb 2021 (Dec 2020 figure: 1,063)	WTE Jan 2021	WTE Feb 2021	WTE change since Jan 21	% change since Jan 21	WTE change since Dec 20	WTE change since Feb 20
Overall	1,072	1,075	+4	+0.3%	+12	+39
Consultants	2	2	-0	-0.5%	-0	+0
Medical/ Dental, other	2	2				
Medical & Dental	4	4	-0	-0.3%	-0	+0
Nurse/ Midwife Manager	62	63	+1	+1.6%	+1	+1
Nurse/ Midwife Specialist & AN/MP	10	12	+2	+19.1%	+2	+4
Staff Nurse/ Staff Midwife	188	187	-1	-0.5%	-1	+2
Pre-registration Nurse/ Midwife Intern	10	10	-1	-5.0%	+2	+2
Pre-registration Nurse Intern (COVID-19)				-100.0%		
Nursing/ Midwifery Student	10	10	-1	-5.0%		+2
Nursing/ Midwifery other	4	4				
Nursing & Midwifery	275	277	+1	+0.5%	+2	+9
Therapy Professions	36	36	+1	+1.4%	+5	+4
Social Care	177	177	+1	+0.4%	+5	+15
Social Workers	13	13	-0	-0.1%	-0	+1
Psychologists	12	11	-1	-5.8%	+0	+3
Pharmacy	2	2				
H&SC, Other	5	5				+1
Health & Social Care Professionals	244	245	+1	+0.2%	+9	+26
Management (VIII & above)	9	9				+3
Administrative/ Supervisory (V to VII)	27	28	+1	+3.7%	+1	+1
Clerical (III & IV)	31	31			-1	-1
Management & Administrative	67	68	+1	+1.5%	+0	+4
Support	77	77	-0	-0.1%	+1	-3
Maintenance/ Technical	7	7			-1	-1
General Support	84	84	-0	-0.1%	+0	-4
Health Care Assistants	366	368	+2	+0.6%	+2	+4
Care, other	32	30	-2	-5.7%	-1	+0
Patient & Client Care	398	398	+1	+0.1%	+0	+4

Daughters of Charity, Limerick

Feb 2021 (Dec 2020 figure: 549)	WTE Jan 2021	WTE Feb 2021	WTE change since Jan 21	% change since Jan 21	WTE change since Dec 20	WTE change since Feb 20
Overall	550	550	-0	-0.1%	+1	+8
Medical/ Dental, other	1	1				
Medical & Dental	1	1				
Nurse/ Midwife Manager	32	33	+1	+3.1%	+1	-1
Nurse/ Midwife Specialist & AN/MP	5	5			-1	-2
Staff Nurse/ Staff Midwife	153	153	+0	+0.3%	+1	+10
<i>Pre-registration Nurse/ Midwife Intern</i>	8	8			-4	-4
<i>Pre-registration Nurse Intern (COVID-19)</i>				-100.0%		
Nursing/ Midwifery Student	8	8			+8	-4
Nursing/ Midwifery other	3	3				
Nursing & Midwifery	201	203	+1	+0.7%	+9	+4
Therapy Professions	15	15			-1	
Social Care	56	65	+9	+16.8%	-2	+11
Social Workers	5	5				+0
Psychologists	7	7				+2
H&SC, Other	6	6				
Health & Social Care Professionals	89	98	+9	+10.6%	-3	+13
Management (VIII & above)	2	2				
Administrative/ Supervisory (V to VII)	11	11				
Clerical (III & IV)	13	13			-1	-1
Management & Administrative	26	26			-1	-1
Support	42	42			-1	-2
Maintenance/ Technical	4	4				
General Support	47	47			-1	-2
Health Care Assistants	163	152	-11	-6.9%	-4	-7
Care, other	23	23				+1
Patient & Client Care	186	175	-11	-6.1%	-4	-6

Daughters of Charity, Roscrea

Feb 2021 (Dec 2020 figure: 289)	WTE Jan 2021	WTE Feb 2021	WTE change since Jan 21	% change since Jan 21	WTE change since Dec 20	WTE change since Feb 20
Overall	289	290	+2	+0.5%	+1	-1
Nurse/ Midwife Manager	14	14			-1	-2
Staff Nurse/ Staff Midwife	19	18	-1	-5.4%	-1	-1
Nursing/ Midwifery other	1	1				
Nursing & Midwifery	33	32	-1	-3.0%	-2	-3
Therapy Professions	2	2				
Social Care	25	26	+1	+4.9%	+1	+7
Social Workers	1	1				
Psychologists	1	1				
Health & Social Care Professionals	29	30	+1	+4.2%	+1	+7
Management (VIII & above)	1	1				
Administrative/ Supervisory (V to VII)	7	7			-1	
Clerical (III & IV)	7	7			+1	+0
Management & Administrative	15	15			-0	+0
Support	4	4				
Maintenance/ Technical	5	5				-1
General Support	9	9				-1
Health Care Assistants	201	202	+1	+0.6%	+2	-1
Care, other	2	2				-4
Patient & Client Care	202	204	+1	+0.6%	+2	-5

Feb 2021 (Dec 2020 figure: 267)	WTE Jan 2021	WTE Feb 2021	WTE change since Jan 21	% change since Jan 21	WTE change since Dec 20	WTE change since Feb 20
Overall	267	269	+2	+0.7%	+2	+43
Consultants	2	2				+0
Registrars	2	2				
SHO/ Interns	4	4				
Medical & Dental	8	8				+0
Nurse/ Midwife Manager	18	18				-0
Staff Nurse/ Staff Midwife	70	70				+10
Nursing & Midwifery	88	88				+10
Therapy Professions	34	35	+1	+3.0%	+1	+12
Health Science/ Diagnostics	1	1				
Social Workers	9	9				+2
Pharmacy	4	4				+1
Health & Social Care Professionals	47	48	+1	+2.1%	+1	+14
Management (VIII & above)	2	2				+1
Administrative/ Supervisory (V to VII)	6	7	+1	+15.5%	+1	+1
Clerical (III & IV)	10	10				
Management & Administrative	18	19	+1	+5.5%	+1	+2
Support	40	40				+5
Maintenance/ Technical	2	2				
General Support	42	42				+5
Health Care Assistants	64	64				+11
Care, other	0	0				
Patient & Client Care	64	64				+11

Kare, Newbridge, Co Kildare

Feb 2021 (Dec 2020 figure: 377)	WTE Jan 2021	WTE Feb 2021	WTE change since Jan 21	% change since Jan 21	WTE change since Dec 20	WTE change since Feb 20
Overall	376	380	+3	+0.9%	+3	+16
Nurse/ Midwife Manager	7	7				-3
Staff Nurse/ Staff Midwife	24	24	-0	-1.2%	-1	+1
Nursing & Midwifery	31	31	-0	-1.0%	-1	-2
Therapy Professions	13	13	-0	-0.8%	-0	-3
Social Care	68	68	+0	+0.4%	+0	+6
Social Workers	4	4				-0
Psychologists	7	7	-0	-3.5%	-1	+1
Health & Social Care Professionals	92	91	-0	-0.1%	-0	+4
Management (VIII & above)	6	6				
Administrative/ Supervisory (V to VII)	13	13	-0	-1.3%	+0	+0
Clerical (III & IV)	13	13			-1	+1
Management & Administrative	33	33	-0	-0.5%	-1	+1
Support	1	1			-0	-0
General Support	1	1			-0	-0
Health Care Assistants	108	108	+0	+0.5%	+3	+6
Care, other	111	115	+3	+3.0%	+3	+6
Patient & Client Care	219	223	+4	+1.7%	+5	+13

Leopardstown Park Hospital

Feb 2021 (Dec 2020 figure: 207)	WTE Jan 2021	WTE Feb 2021	WTE change since Jan 21	% change since Jan 21	WTE change since Dec 20	WTE change since Feb 20
Overall	207	203	-3	-1.6%	-3	-7
Medical/ Dental, other	1	1				
Medical & Dental	1	1				
Nurse/ Midwife Manager	12	13	+1	+9.1%	-1	-3
Staff Nurse/ Staff Midwife	41	39	-2	-4.0%	-3	-4
Nursing & Midwifery	52	52	-1	-1.1%	-4	-7
Therapy Professions	9	9				+2
Social Workers	1	1				
Pharmacy	2	2			-0	-0
Health & Social Care Professionals	12	12			-0	+2
Management (VIII & above)	1	1				
Administrative/ Supervisory (V to VII)	7	7	-0	-4.5%	-0	-0
Clerical (III & IV)	12	11	-0	-2.5%	-0	+1
Management & Administrative	20	19	-1	-3.1%	-1	+1
Support	34	34	-1	-1.5%	+0	+0
Maintenance/ Technical	4	4				
General Support	38	38	-1	-1.3%	+0	+0
Health Care Assistants	80	79	-1	-1.8%	+2	-3
Care, other	3	3	-0	-4.4%	-0	-0
Patient & Client Care	83	82	-2	-1.9%	+2	-3

Muiriosa Foundation, Laois/Offaly

Feb 2021 (Dec 2020 figure: 320)	WTE Jan 2021	WTE Feb 2021	WTE change since Jan 21	% change since Jan 21	WTE change since Dec 20	WTE change since Feb 20
Overall	331	335	+4	+1.1%	+14	+35
Nurse/ Midwife Manager	17	18	+0	+2.6%	+1	+2
Staff Nurse/ Staff Midwife	29	32	+3	+10.4%	+4	+4
Nursing & Midwifery	46	50	+3	+7.5%	+5	+6
Social Care	107	110	+2	+2.2%	+5	+15
Social Workers	3	3	+0	+0.6%		-1
Psychologists	1	1				-1
H&SC, Other	1	1				
Health & Social Care Professionals	112	115	+2	+2.1%	+5	+14
Management (VIII & above)	3	3				+2
Administrative/ Supervisory (V to VII)	6	5	-1	-16.7%	+0	+0
Clerical (III & IV)	11	11	-0	-1.6%	-0	+0
Management & Administrative	20	19	-1	-5.8%	-0	+2
Support	1	1	+0	+6.4%	+0	+0
Maintenance/ Technical	2	2				
General Support	3	3	+0	+2.4%	+0	+0
Health Care Assistants	121	120	-0	-0.2%	+6	+15
Care, other	28	27	-1	-3.2%	-1	-2
Patient & Client Care	148	147	-1	-0.7%	+5	+13

Muiriosa Foundation, Longford/Westmeath

Feb 2021 (Dec 2020 figure: 284)	WTE Jan 2021	WTE Feb 2021	WTE change since Jan 21	% change since Jan 21	WTE change since Dec 20	WTE change since Feb 20
Overall	285	287	+2	+0.6%	+2	+22
Nurse/ Midwife Manager	9	9	+0	+0.9%	-0	-0
Staff Nurse/ Staff Midwife	4	4	+0	+3.5%	-0	-0
Nursing & Midwifery	13	13	+0	+1.7%	-1	-1
Therapy Professions	3	3				
Social Care	99	99	+0	+0.3%	-0	+7
Social Workers	4	4	+0	+3.9%	+0	+1
Psychologists	2	2	+0	+2.6%	+0	+0
H&SC, Other	2	2	+1	+39.0%	+0	-0
Health & Social Care Professionals	109	111	+1	+1.1%	+0	+8
Senior Management (VIII & GM)	1	1			+1	+1
Management (VIII & above)	1	1			+1	+1
Administrative/ Supervisory (V to VII)	4	4	+0	+1.3%		-1
Clerical (III & IV)	10	10	+0	+0.8%	+0	-0
Management & Administrative	15	15	+0	+0.9%	+1	+0
Support	1	1				
Maintenance/ Technical	3	3				
General Support	4	4				
Health Care Assistants	128	128	+0	+0.3%	+2	+16
Care, other	16	15	-0	-1.2%	-0	-2
Patient & Client Care	143	144	+0	+0.2%	+2	+14

Feb 2021 (Dec 2020 figure: 342)	WTE Jan 2021	WTE Feb 2021	WTE change since Jan 21	% change since Jan 21	WTE change since Dec 20	WTE change since Feb 20
Overall	341	342	+1	+0.2%	+0	+12
Nurse/ Midwife Manager	14	13	-0	-0.6%	-0	-3
Nurse/ Midwife Specialist & AN/MP	2	2	+0	+3.2%	+0	+0
Staff Nurse/ Staff Midwife	21	21	+0	+1.3%	-1	-3
<i>Pre-registration Nurse/ Midwife Intern</i>	1	6	+5	+664.5%	+6	+1
Nursing/ Midwifery Student	1	6	+5	+664.5%	+6	+1
Nursing/ Midwifery other	6	6	-0	-3.2%	-1	-1
Nursing & Midwifery	43	48	+5	+11.9%	+4	-4
Therapy Professions	8	8			-0	-0
Social Care	94	92	-2	-2.0%	-2	+5
Social Workers	3	3				+0
Psychologists	2	2				+0
H&SC, Other	3	3				
Health & Social Care Professionals	109	108	-2	-1.7%	-2	+5
Management (VIII & above)	4	4				+1
Administrative/ Supervisory (V to VII)	13	12	-1	-4.3%	-1	-2
Clerical (III & IV)	13	13	+0	+2.1%	+0	-1
Management & Administrative	30	29	-0	-0.9%	-0	-1
Support	14	13	-1	-4.1%	-0	-1
Maintenance/ Technical	4	4				-1
General Support	18	17	-1	-3.2%	-0	-2
Health Care Assistants	133	131	-2	-1.2%	-2	+15
Care, other	9	9	+0	+0.9%	+0	+0
Patient & Client Care	141	140	-2	-1.1%	-1	+15

Peamount Hospital (Newcastle)

Feb 2021 (Dec 2020 figure: 483)	WTE Jan 2021	WTE Feb 2021	WTE change since Jan 21	% change since Jan 21	WTE change since Dec 20	WTE change since Feb 20
Overall	482	475	-6	-1.3%	-7	-24
Registrars	2	2	+0	+14.3%		
SHO/ Interns	7	7	+0	+2.5%		
Medical & Dental	9	9	+0	+4.9%		
Nurse/ Midwife Manager	29	31	+1	+4.1%	+3	+4
Nurse/ Midwife Specialist & AN/MP	2	2				
Staff Nurse/ Staff Midwife	74	73	-1	-1.6%	-3	-13
Nursing/ Midwifery other	1	1				+1
Nursing & Midwifery	106	106	+0	+0.1%	+0	-8
Therapy Professions	32	29	-3	-8.4%	+1	-3
Health Science/ Diagnostics	3	3				
Social Care	3	3	-0	-8.5%	-1	+1
Social Workers	5	6	+1	+14.7%	+1	+1
Pharmacy	3	4	+1	+19.2%	+0	-1
Health & Social Care Professionals	47	45	-2	-3.3%	+1	-2
Management (VIII & above)	4	4				
Administrative/ Supervisory (V to VII)	16	17	+1	+7.9%	+1	+3
Clerical (III & IV)	18	19	+0	+1.1%	-1	-3
Management & Administrative	39	40	+1	+3.8%	-0	-0
Support	44	42	-2	-4.0%	-2	-5
Maintenance/ Technical	8	8	+0	+0.5%	-1	-0
General Support	52	50	-2	-3.3%	-3	-5
Health Care Assistants	226	221	-5	-2.2%	-5	-9
Care, other	3	3	+0	+5.3%	+0	+0
Patient & Client Care	229	224	-5	-2.1%	-5	-9

Feb 2021 (Dec 2020 figure: 268)	WTE Jan 2021	WTE Feb 2021	WTE change since Jan 21	% change since Jan 21	WTE change since Dec 20	WTE change since Feb 20
Overall	269	269	-0	-0.1%	+1	-9
Registrars	2	2			+1	+1
Medical/ Dental, other	1	1				
Medical & Dental	3	3			+1	+1
Nurse/ Midwife Manager	16	16	-0	-0.2%	-1	-4
Staff Nurse/ Staff Midwife	75	75			+1	-2
Nursing & Midwifery	91	91	-0	-0.0%	-0	-6
Therapy Professions	29	30	+1	+4.5%	+1	-0
Social Workers	6	6				
Psychologists	1	1				
Health & Social Care Professionals	35	36	+1	+3.7%	+1	-0
Management (VIII & above)	1	1				+1
Administrative/ Supervisory (V to VII)	6	7	+1	+17.1%	+2	+1
Clerical (III & IV)	9	8	-1	-10.9%	-1	+1
Management & Administrative	16	16			+1	+3
Support	34	34				-2
Maintenance/ Technical	4	4			-1	-1
General Support	38	38			-1	-3
Health Care Assistants	85	84	-1	-1.2%	-1	-4
Care, other	1	1	-1	-50.0%	-1	-1
Patient & Client Care	86	85	-2	-1.7%	-2	-4

Stewart's Hospital, (Palmerstown)

Feb 2021 (Dec 2020 figure: 914)	WTE Jan 2021	WTE Feb 2021	WTE change since Jan 21	% change since Jan 21	WTE change since Dec 20	WTE change since Feb 20
Overall	916	915	-1	-0.2%	+1	+58
Consultants	0	0				
Medical & Dental	0	0				
Nurse/ Midwife Manager	34	34			+3	+2
Staff Nurse/ Staff Midwife	83	84	+1	+0.6%	+3	+12
<i>Pre-registration Nurse/ Midwife Intern</i>	7	7			+7	-1
Nursing/ Midwifery Student	7	7			+7	-1
Nursing/ Midwifery other	1	1				
Nursing & Midwifery	125	125	+1	+0.4%	+13	+13
Therapy Professions	18	18	-1	-2.8%	-2	+2
Social Care	13	13				+1
Social Workers	6	6				-1
Psychologists	4	4				-1
Health & Social Care Professionals	41	40	-1	-1.2%	-2	+2
Management (VIII & above)	16	17	+1	+6.3%	+1	+5
Administrative/ Supervisory (V to VII)	17	18	+1	+6.0%	+1	+4
Clerical (III & IV)	25	24	-1	-3.9%		+1
Management & Administrative	58	59	+1	+1.7%	+2	+9
Support	53	53	-0	-0.5%	-1	-3
Maintenance/ Technical	6	6				+1
General Support	59	59	-0	-0.4%	-1	-2
Health Care Assistants	512	509	-2	-0.4%	-10	+32
Care, other	122	122	+0	+0.1%	-0	+4
Patient & Client Care	633	631	-2	-0.3%	-11	+36

Feb 2021 (Dec 2020 figure: 648)	WTE Jan 2021	WTE Feb 2021	WTE change since Jan 21	% change since Jan 21	WTE change since Dec 20	WTE change since Feb 20
Overall	670	646	-23	-3.5%	-2	+18
Registrars	1	1				
Medical & Dental	1	1				
Nurse/ Midwife Manager	47	45	-2	-4.2%	-2	+0
Nurse/ Midwife Specialist & AN/MP	3	3			-0	-1
Staff Nurse/ Staff Midwife	155	166	+11	+6.8%	+13	+21
Pre-registration Nurse/ Midwife Intern	12		-12	-100.0%		-9
Pre-registration Nurse Intern (COVID-19)				-100.0%		
Nursing/ Midwifery Student	12		-12	-100.0%	-4	-9
Nursing Education/Clinical		1	+1	-100.0%	+1	+1
Nursing/ Midwifery other		1	+1	-100.0%	+1	+1
Nursing & Midwifery	216	214	-2	-1.1%	+8	+12
Therapy Professions	3	3				+1
Social Care	77	71	-6	-8.2%	-5	-4
Social Workers	2	2				+0
Psychologists	1	1				
Health & Social Care Professionals	83	77	-6	-7.7%	-5	-3
Management (VIII & above)	1	1			+0	+0
Administrative/ Supervisory (V to VII)	6	6	-0	-1.2%	+0	+0
Clerical (III & IV)	12	12	-1	-4.2%	+0	+0
Management & Administrative	19	18	-1	-3.1%	+0	+0
Support	20	20	-1	-2.5%	+0	-1
Maintenance/ Technical	3	2	-1	-34.6%	-1	-1
General Support	23	22	-2	-6.5%	-1	-2
Health Care Assistants	294	282	-12	-4.2%	-5	+13
Care, other	33	33	+0	+0.4%	+0	-2
Patient & Client Care	327	315	-12	-3.8%	-5	+11

St. John of God (IDS)

Feb 2021 (Dec 2020 figure: 468)	WTE Jan 2021	WTE Feb 2021	WTE change since Jan 21	% change since Jan 21	WTE change since Dec 20	WTE change since Feb 20
Overall	423	459	+35	+8.3%	-9	+2
Medical & Dental	1	1				
Nurse/ Midwife Manager	7	9	+2	+29.2%	+1	+1
Staff Nurse/ Staff Midwife	50	50	-1	-1.8%	+0	+4
Nursing & Midwifery	57	58	+1	+1.9%	+1	+5
Therapy Professions	13	13	-0	-1.0%	-0	+1
Social Care	159	156	-3	-1.9%	-4	+4
Social Workers	3	3				
Psychologists	5	7	+2	+51.6%	+1	+1
Health & Social Care Professionals	180	179	-1	-0.4%	-3	+7
Management (VIII & above)	3	14	+11	+379.7%	-0	-2
Administrative/ Supervisory (V to VII)	7	27	+19	+257.9%	-0	-1
Clerical (III & IV)	9	18	+10	+106.7%	-0	-0
Management & Administrative	19	59	+40	+206.3%	-1	-3
Support	11	12	+1	+7.5%	-0	+0
Maintenance/ Technical	5	5				
General Support	16	17	+1	+5.2%	-0	+0
Health Care Assistants	20	18	-2	-7.9%	+0	-0
Care, other	130	126	-4	-3.4%	-7	-6
Patient & Client Care	150	144	-6	-4.0%	-7	-6

St. John of God, Kerry

Feb 2021 (Dec 2020 figure: 320)	WTE Jan 2021	WTE Feb 2021	WTE change since Jan 21	% change since Jan 21	WTE change since Dec 20	WTE change since Feb 20
Overall	330	321	-8	-2.6%	+1	+11
Nurse/ Midwife Manager	15	15	-0	-1.7%	-0	-0
Staff Nurse/ Staff Midwife	47	47	-0	-0.2%	-0	+1
Nursing & Midwifery	62	62	-0	-0.6%	-0	+0
Therapy Professions	4	4	+0	+3.6%	+0	+1
Social Care	46	45	-1	-2.3%	-1	-1
Social Workers	1	1				
Psychologists	1	1	+0	+25.0%	+0	-1
Health & Social Care Professionals	52	51	-1	-1.4%	-1	-1
Management (VIII & above)	1	1				
Administrative/ Supervisory (V to VII)	7	6	-1	-13.8%	-1	-1
Clerical (III & IV)	9	9	+1	+5.8%	+1	-1
Management & Administrative	17	17	-1	-2.9%	-1	-2
General Support	30	30	+0	+0.8%	+0	+0
Health Care Assistants	123	117	-6	-5.0%	+3	+12
Care, other	46	45	-1	-1.9%	-1	+1
Patient & Client Care	169	162	-7	-4.2%	+3	+13

Feb 2021 (Dec 2020 figure: 801)	WTE Jan 2021	WTE Feb 2021	WTE change since Jan 21	% change since Jan 21	WTE change since Dec 20	WTE change since Feb 20
Overall	792	782	-10	-1.2%	-19	+14
Registrars	1	1	-0	-5.7%		
Medical & Dental	1	1	-0	-5.7%		
Nurse/ Midwife Manager	21	20	-1	-4.7%	-2	-0
Nurse/ Midwife Specialist & AN/MP	1	1				
Staff Nurse/ Staff Midwife	91	90	-1	-0.8%	-1	-0
Nursing & Midwifery	113	111	-2	-1.5%	-2	-1
Therapy Professions	11	10	-1	-6.5%	-3	-5
Social Care	267	264	-3	-1.1%	-5	+12
Social Workers	5	6	+0	+5.9%	-0	-1
Psychologists	6	7	+0	+6.3%	+0	+1
Health & Social Care Professionals	290	287	-3	-1.0%	-8	+8
Management (VIII & above)	5	6	+1	+10.2%	+1	
Administrative/ Supervisory (V to VII)	11	10	-1	-5.9%	-1	-1
Clerical (III & IV)	19	20	+0	+1.5%	+2	+2
Management & Administrative	36	36	+0	+0.5%	+2	+1
Support	27	26	-1	-2.6%	-2	-5
Maintenance/ Technical	14	14	+0	+0.6%	-0	+1
General Support	41	41	-1	-1.5%	-2	-4
Health Care Assistants	167	159	-8	-4.5%	-6	+4
Care, other	144	147	+3	+2.0%	-2	+6
Patient & Client Care	311	307	-5	-1.5%	-8	+10

Feb 2021 (Dec 2020 figure: 1,453)	WTE Jan 2021	WTE Feb 2021	WTE change since Jan 21	% change since Jan 21	WTE change since Dec 20	WTE change since Feb 20
Overall	1,427	1,428	+2	+0.1%	-25	-0
Consultants	6	6				+1
Registrars	1	1				-2
Medical/ Dental, other	4	4				
Medical & Dental	11	11				-1
Nurse/ Midwife Manager	87	87	-1	-0.6%	-1	+2
Staff Nurse/ Staff Midwife	165	168	+3	+1.9%	+3	+11
Nursing & Midwifery	252	255	+3	+1.1%	+2	+13
Therapy Professions	48	51	+3	+6.5%	+5	-3
Social Care	568	572	+4	+0.7%	+7	+41
Social Workers	21	20	-1	-6.2%	-2	-1
Psychologists	23	22	-1	-3.6%	-1	+1
H&SC, Other	9	9	+0	+0.7%	-0	-1
Health & Social Care Professionals	669	673	+5	+0.7%	+9	+37
Management (VIII & above)	21	21			+0	-0
Administrative/ Supervisory (V to VII)	50	50			+4	+8
Clerical (III & IV)	46	45	-1	-1.4%	-8	-9
Management & Administrative	117	116	-1	-0.5%	-4	-1
Support	46	46	-0	-0.3%	-2	-50
Maintenance/ Technical	12	12				
General Support	58	58	-0	-0.2%	-2	-50
Health Care Assistants	296	292	-4	-1.2%	-29	+5
Care, other	24	23	-1	-4.6%	-1	-3
Patient & Client Care	320	315	-5	-1.5%	-30	+2

St. Patrick's, Kilkenny

Feb 2021 (Dec 2020 figure: 287)	WTE Jan 2021	WTE Feb 2021	WTE change since Jan 21	% change since Jan 21	WTE change since Dec 20	WTE change since Feb 20
Overall	285	284	-1	-0.3%	-2	+10
Nurse/ Midwife Manager	12	12	+0	+0.3%	+0	-1
Staff Nurse/ Staff Midwife	26	26	-1	-2.1%	-1	+0
Pre-registration Nurse/ Midwife Intern	1	1			+1	+1
Nursing/ Midwifery Student	1	1			+1	+1
Nursing & Midwifery	39	39	-1	-1.4%	-0	+0
Social Care	29	28	-1	-3.7%	-0	-2
Social Workers	1	1			-0	+0
H&SC, Other	2	2	-0	-10.2%	-0	-1
Health & Social Care Professionals	32	31	-1	-4.0%	-1	-3
Executive Management	1	1			+1	
Management (VIII & above)	1	1				
Administrative/ Supervisory (V to VII)	6	6				+0
Clerical (III & IV)	12	12	-0	-0.3%		-1
Management & Administrative	19	19	-0	-0.2%		-1
Support	1	1	-1	-43.4%	-1	-2
Maintenance/ Technical	2	2			-1	-1
General Support	3	3	-1	-18.1%	-2	-3
Patient & Client Care	192	193	+2	+0.8%	+0	+17

Sunbeam House Services

Feb 2021 (Dec 2020 figure: 450)	WTE Jan 2021	WTE Feb 2021	WTE change since Jan 21	% change since Jan 21	WTE change since Dec 20	WTE change since Feb 20
Overall	486	468	-18	-3.7%	+19	+22
Nurse/ Midwife Manager	4	4				+1
Staff Nurse/ Staff Midwife	35	33	-2	-6.3%	+1	-2
Nursing & Midwifery	39	37	-2	-5.6%	+1	-1
Therapy Professions	3	4	+0	+3.2%	+1	+2
Social Care	213	202	-11	-5.0%	+8	+27
Social Workers	2	2				+0
Psychologists				-100.0%		-2
H&SC, Other				-100.0%		
Health & Social Care Professionals	218	208	-11	-4.8%	+9	+28
Management (VIII & above)	9	9				+1
Administrative/ Supervisory (V to VII)	9	9	+0	+0.6%	+0	-1
Clerical (III & IV)	26	28	+2	+7.9%	+3	+1
Management & Administrative	44	46	+2	+4.8%	+3	+1
Support	5	4	-0	-6.0%	-4	-17
Maintenance/ Technical				-100.0%		-2
General Support	5	4	-0	-6.0%	-4	-19
Health Care Assistants	73	73	+0	+0.2%	+8	+7
Care, other	107	100	-7	-6.8%	+1	+6
Patient & Client Care	180	173	-7	-3.9%	+9	+13

Bros. of Charity, West Region

Feb 2021 (Dec 2020 figure: 1,298)	WTE Jan 2021	WTE Feb 2021	WTE change since Jan 21	% change since Jan 21	WTE change since Dec 20	WTE change since Feb 20
Overall	1,281	1,287	+6	+0.5%	-10	+13
Consultants	2	2				
Registrars	2	2				-1
Medical & Dental	4	4				-1
Nurse/ Midwife Manager	68	69	+1	+1.6%	+0	-1
Nurse/ Midwife Specialist & AN/MP	5	5	-0	-1.4%	+0	-0
Staff Nurse/ Staff Midwife	120	121	+1	+0.6%	-3	+0
<i>Pre-registration Nurse Intern (COVID-19)</i>	1		-1	-100.0%		
Nursing/ Midwifery Student	1		-1	-100.0%	-1	
Nursing & Midwifery	193	195	+1	+0.6%	-3	-0
Therapy Professions	30	31	+1	+1.7%	+2	-4
Social Care	214	214	+1	+0.3%	+3	+19
Social Workers	25	27	+1	+5.3%	+1	+1
Psychologists	13	14	+0	+0.6%	+1	-1
H&SC, Other	9	11	+2	+20.9%	-0	-4
Health & Social Care Professionals	292	296	+4	+1.5%	+7	+11
Management (VIII & above)	13	13			+0	
Administrative/ Supervisory (V to VII)	38	37	-0	-1.2%	+1	+2
Clerical (III & IV)	37	37	+0	+1.2%	-0	-0
Management & Administrative	87	87	-0	-0.0%	+0	+2
Support	39	40	+2	+3.9%	-3	-8
Maintenance/ Technical	5	5				+0
General Support	44	45	+2	+3.4%	-3	-8
Health Care Assistants	539	539	+1	+0.1%	-9	+14
Care, other	121	120	-1	-1.1%	-3	-5
Patient & Client Care	660	659	-1	-0.1%	-12	+9

Social Care Services Employment by Grade Group: Feb 2021

Feb 2021 (Dec 2020 figure: 32,359)	WTE Jan 2021	WTE Feb 2021	WTE change since Jan 21	% change since Jan 21	WTE change since Dec 20	WTE change since Feb 20
Overall	32,352	32,302	-49	-0.2%	-57	+925
Consultant Medicine	4	4	-0	-0.5%	-0	-0
Consultant Paediatrics	3	3				
Consultant Psychiatry	21	20	-1	-5.0%	-2	+0
Consultants	28	27	-1	-3.8%	-2	+0
Registrar	13	13	+1	+6.1%	+4	+1
Senior Registrar	3	3			-1	
Specialist Registrar	4	4	+0	+0.8%		-1
Registrars	20	20	+1	+4.0%	+3	+0
SHO/ Interns	21	18	-3	-12.7%	-5	-1
Medical/ Dental, other	102	100	-1	-1.4%	-18	+1
Medical & Dental	170	165	-4	-2.5%	-21	+0
Clinical Nurse/ Midwife Manager	1,349	1,362	+12	+0.9%	+11	+38
Director Nursing/Midwifery, Assistant	154	151	-3	-1.7%	-1	+13
Director of Nursing/Midwifery	140	144	+4	+2.6%	+2	+2
Nurse/ Midwife Manager	1,643	1,656	+13	+0.8%	+13	+53
Advanced Nurse/ Midwife Practitioner	26	27	+1	+3.8%	+2	+13
Clinical Nurse/ Midwife Specialist	78	79	+0	+0.1%	+1	+2
Nurse/ Midwife Specialist & AN/MP	104	105	+1	+1.0%	+3	+15
Staff Midwives	1	1	+0	+13.9%	+0	+1
Staff Nurse [Intellectual Disability]	1,810	1,665	-145	-8.0%	-125	+81
Staff Nurse [Psychiatric]	54	204	+150	+279.2%	+146	+125
Staff Nurses [General/ Children's]	3,366	3,375	+10	+0.3%	+6	-111
Staff Nurse/ Staff Midwife	5,230	5,245	+15	+0.3%	+28	+96
Public Health Nurse	20	19	-1	-4.5%	-1	+1
Pre-registration Nurse/ Midwife Intern	64	75	+11	+17.3%	+73	-4
Pre-registration Nurse Intern (COVID-19)	12	10	-2	-18.2%	-22	+10
Post-registration Nurse/ Midwife Student				-100.0%		-1
Nursing/ Midwifery awaiting registration	15	14	-0	-1.6%	-0	-3
Nursing/ Midwifery Student	90	99	+9	+9.7%	+50	+1
Nursing Education/Clinical	27	28	+1	+5.1%	+1	+5
Other Nursing/ Midwifery	1	1				
Nursing/ Midwifery other	28	29	+1	+4.9%	+1	+5
Nursing & Midwifery	7,116	7,154	+38	+0.5%	+94	+170
Dietitians	34	37	+3	+7.9%	+3	+3
Occupational Therapists	399	412	+13	+3.4%	+21	+25
Physiotherapists	332	332	+0	+0.0%	+7	+18
Podiatrists & Chiropodists	15	15	-0	-0.7%	+2	+3
Speech & Language Therapists	339	322	-17	-5.0%	-5	+7
Therapy Professions	1,119	1,118	-1	-0.1%	+27	+57
Clinical Engineering	14	14			+1	+2
Clinical Measurement	2	2	-0	-5.7%	-0	+1
Medical Science	4	4				
Phlebotomists				-100.0%		-1
Radiographers	6	6	+0	+1.0%	+0	+0
Health Science/ Diagnostics	26	26	-0	-0.2%	+1	+2
Social Care	2,814	2,799	-14	-0.5%	+7	+210
Social Workers	331	331	+1	+0.2%	+3	+16
Psychologists	237	234	-4	-1.5%	+3	+19

Feb 2021 (Dec 2020 figure: 32,359)	WTE Jan 2021	WTE Feb 2021	WTE change since Jan 21	% change since Jan 21	WTE change since Dec 20	WTE change since Feb 20
Overall	32,352	32,302	-49	-0.2%	-57	+925
Pharmacy	23	24	+1	+4.0%	+1	-1
Counsellor Therapists	19	21	+2	+12.0%	+1	+2
Other Health & Social Care	45	45	-0	-0.8%	-1	-5
Play Therapists/ Specialists	12	12	+0	+0.2%	+0	-4
H&SC, Other	76	78	+2	+2.5%	+1	-7
Health & Social Care Professionals	4,625	4,610	-15	-0.3%	+44	+296
Executive Management	47	52	+6	+12.0%	+2	+8
Senior Management (VIII & GM)	226	237	+12	+5.2%	+6	+21
Management (VIII & above)	273	290	+17	+6.4%	+7	+30
Middle Management (V-VII)	680	711	+31	+4.5%	+24	+75
Other Administrative	15	15			-1	-1
Administrative/ Supervisory (V to VII)	695	726	+31	+4.4%	+23	+75
Clerical (III & IV)	1,271	1,268	-3	-0.3%	-4	+29
Management & Administrative	2,239	2,284	+45	+2.0%	+26	+133
Catering	308	310	+2	+0.7%	-3	-19
Household Services	882	873	-9	-1.0%	-12	-27
Other Labs & Associated	1	1	-0	-5.7%		
Other Support	162	166	+3	+2.2%	+1	-61
Portering	99	97	-2	-2.5%	-4	-13
Support	1,452	1,446	-6	-0.4%	-18	-120
Maintenance	213	208	-4	-2.1%	-8	-8
Technical Services	11	15	+4	+36.0%	+4	+7
Maintenance/ Technical	224	223	-0	-0.2%	-4	-1
General Support	1,675	1,669	-6	-0.4%	-22	-121
HCA (Student Nurse/Midwife COVID-19)	17	14	-2	-14.3%	-8	+14
HCA, Nurse's Aide, etc.	11,162	11,132	-30	-0.3%	-28	+391
Health & Social Care Assistants	38	39	+0	+1.2%	+1	+6
Health Care Assistants	11,217	11,185	-32	-0.3%	-35	+411
Home Help	3,459	3,381	-77	-2.2%	-144	-47
Care, other	1,851	1,853	+3	+0.2%	+1	+81
Patient & Client Care	16,527	16,420	-107	-0.6%	-178	+446

Employment by WTE, Headcount, Gender, Full-Time /Part-Time etc.: Feb 2021

Social Care Services Staff Group	WTE	Headcount	WTE: no.	% Male	% female	Male WTE: no.	Female WTE: no.	% Total Perm	% Male Perm	% Female Perm	% Total Full Time	% Total Part Time	% Male FT	% Female FT
Overall	32,302	38,856	1.20	16.5%	83.5%	1.11	1.22	84.5%	84.1%	84.5%	57.9%	42.1%	73.6%	54.8%
Consultant Medicine	4	7	1.73	14.3%	85.7%	2.00	1.69	85.7%	85.7%	83.3%	28.6%	71.4%	0.0%	33.3%
Consultant Paediatrics	3	6	1.97	16.7%	83.3%	1.82	2.00	66.7%	66.7%	80.0%	33.3%	66.7%	100.0%	20.0%
Consultant Psychiatry	20	26	1.33	26.9%	73.1%	1.33	1.33	84.6%	84.6%	84.2%	57.7%	42.3%	71.4%	52.6%
Consultants	27	39	1.47	23.1%	76.9%	1.42	1.48	82.1%	77.8%	83.3%	48.7%	51.3%	66.7%	43.3%
Registrar	13	14	1.05	28.6%	71.4%	1.00	1.07	28.6%	28.6%	20.0%	85.7%	14.3%	100.0%	80.0%
Senior Registrar	3	3	1.00		100.0%		1.00	33.3%	33.3%	33.3%	100.0%	0.0%		100.0%
Specialist Registrar	4	4	1.00	75.0%	25.0%	1.00	1.00	0.0%	0.0%	0.0%	100.0%	0.0%	100.0%	100.0%
Registrars	20	21	1.03	33.3%	66.7%	1.00	1.05	23.8%	28.6%	21.4%	90.5%	9.5%	100.0%	85.7%
SHO/ Interns	18	18	1.00	33.3%	66.7%	1.00	1.00	11.1%	33.3%	0.0%	100.0%	0.0%	100.0%	100.0%
Medical/ Dental, other	100	183	1.82	62.8%	37.2%	1.93	1.67	58.5%	59.1%	57.4%	36.1%	63.9%	32.2%	42.6%
Medical & Dental	165	261	1.58	52.5%	47.5%	1.73	1.44	55.9%	57.7%	54.0%	46.7%	53.3%	40.9%	53.2%
Clinical Nurse/ Midwife Manager	1,362	1,454	1.07	10.7%	89.3%	1.02	1.07	94.2%	94.2%	94.7%	80.9%	19.1%	96.8%	79.0%
Director Nursing/Midwifery, Assistant	151	156	1.03	7.7%	92.3%	1.00	1.04	97.4%	97.4%	97.2%	91.7%	8.3%	100.0%	91.0%
Director of Nursing/Midwifery	144	147	1.02	6.1%	93.9%	1.11	1.02	97.3%	97.3%	97.1%	97.3%	2.7%	100.0%	97.1%
Nurse/ Midwife Manager	1,656	1,757	1.06	10.0%	90.0%	1.03	1.06	94.7%	90.9%	95.1%	83.2%	16.8%	97.2%	81.7%
Advanced Nurse/ Midwife Practitioner	27	27	1.02	18.5%	81.5%	1.00	1.02	100.0%	100.0%	100.0%	100.0%	0.0%	100.0%	100.0%
Clinical Nurse/ Midwife Specialist	79	89	1.13	5.6%	94.4%	1.01	1.14	96.6%	96.6%	96.4%	59.6%	40.4%	100.0%	57.1%
Nurse/ Midwife Specialist & AN/MP	105	116	1.10	8.6%	91.4%	1.00	1.11	97.4%	100.0%	97.2%	69.0%	31.0%	100.0%	66.0%
Staff Midwives	1	1	1.11		100.0%		1.11	100.0%	100.0%	100.0%	0.0%	100.0%		0.0%
Staff Nurse [Intellectual Disability]	1,665	1,918	1.15	8.3%	91.7%	1.07	1.16	94.9%	94.9%	94.9%	63.8%	36.2%	84.3%	62.0%
Staff Nurse [Psychiatric]	204	236	1.16	10.6%	89.4%	1.03	1.17	91.9%	91.9%	91.5%	67.8%	32.2%	88.0%	65.4%
Staff Nurses [General/ Children's]	3,375	3,925	1.16	8.6%	91.4%	1.05	1.17	89.6%	89.6%	89.7%	62.6%	37.4%	89.6%	60.1%
Staff Nurse/ Staff Midwife	5,245	6,080	1.16	8.6%	91.4%	1.06	1.17	91.4%	90.8%	91.4%	63.2%	36.8%	87.9%	60.9%
Public Health Nurse	19	23	1.18	4.3%	95.7%	1.00	1.19	100.0%	100.0%	100.0%	56.5%	43.5%	100.0%	54.5%
Nursing/ Midwifery Student	99	181	1.83	5.5%	94.5%	1.72	1.83	20.4%	0.0%	21.6%	72.4%	27.6%	90.0%	71.3%
Nursing Education/Clinical	28	31	1.11	3.2%	96.8%	1.00	1.11	96.8%	96.8%	96.7%	77.4%	22.6%	100.0%	76.7%
Other Nursing/ Midwifery	1	1	1.00	100.0%		1.00		100.0%	100.0%		100.0%	0.0%	100.0%	

Nursing/ Midwifery other	29	32	1.10	6.3%	93.8%	1.00	1.11	96.9%	100.0%	96.7%	78.1%	21.9%	100.0%	76.7%
Nursing & Midwifery	7,154	8,189	1.14	8.8%	91.2%	1.05	1.15	90.6%	89.7%	90.7%	67.8%	32.2%	90.4%	65.6%
Dietitians	37	50	1.35	4.0%	96.0%	1.00	1.36	88.0%	88.0%	87.5%	56.0%	44.0%	100.0%	54.2%
Occupational Therapists	412	469	1.14	7.7%	92.3%	1.05	1.15	88.7%	88.7%	88.2%	78.3%	21.7%	91.7%	77.1%
Physiotherapists	332	386	1.16	15.5%	84.5%	1.05	1.18	88.6%	88.6%	88.3%	69.7%	30.3%	91.7%	65.6%
Podiatrists & Chiropodists	15	19	1.30	21.1%	78.9%	1.00	1.41	47.4%	47.4%	46.7%	63.2%	36.8%	75.0%	60.0%
Speech & Language Therapists	322	372	1.16	1.6%	98.4%	1.01	1.16	91.7%	91.7%	91.8%	74.5%	25.5%	100.0%	74.0%
Therapy Professions	1,118	1,296	1.16	8.3%	91.7%	1.04	1.17	88.9%	89.8%	88.8%	73.5%	26.5%	91.7%	71.9%
Clinical Engineering	14	14	1.00	92.9%	7.1%	1.00	1.00	92.9%	92.9%	100.0%	92.9%	7.1%	92.3%	100.0%
Clinical Measurement	2	2	1.00	100.0%		1.00		100.0%	100.0%		100.0%	0.0%	100.0%	
Medical Science	4	4	1.00	75.0%	25.0%	1.00	1.00	75.0%	75.0%	100.0%	100.0%	0.0%	100.0%	100.0%
Radiographers	6	10	1.66	10.0%	90.0%	2.00	1.63	90.0%	90.0%	88.9%	20.0%	80.0%	0.0%	22.2%
Health Science/ Diagnostics	26	30	1.16	63.3%	36.7%	1.03	1.46	90.0%	89.5%	90.9%	70.0%	30.0%	89.5%	36.4%
Social Care	2,799	3,293	1.18	16.0%	84.0%	1.10	1.19	90.3%	91.5%	90.1%	49.3%	50.7%	63.6%	46.5%
Social Workers	331	383	1.16	16.4%	83.6%	1.06	1.18	91.9%	87.3%	92.8%	73.6%	26.4%	85.7%	71.3%
Psychologists	234	268	1.15	21.6%	78.4%	1.07	1.17	92.9%	93.1%	92.9%	72.4%	27.6%	82.8%	69.5%
Pharmacy	24	33	1.37	15.2%	84.8%	1.36	1.37	75.8%	100.0%	71.4%	51.5%	48.5%	60.0%	50.0%
Counsellor Therapists	21	25	1.21	8.0%	92.0%	1.00	1.23	96.0%	96.0%	95.7%	56.0%	44.0%	100.0%	52.2%
Other Health & Social Care	45	59	1.32	18.6%	81.4%	1.11	1.38	86.4%	86.4%	87.5%	49.2%	50.8%	72.7%	43.8%
Play Therapists/ Specialists	12	16	1.31	25.0%	75.0%	1.00	1.45	100.0%	100.0%	100.0%	50.0%	50.0%	100.0%	33.3%
H&SC, Other	78	100	1.29	17.0%	83.0%	1.07	1.34	91.0%	88.2%	91.6%	51.0%	49.0%	82.4%	44.6%
Health & Social Care	4,610	5,403	1.17	14.8%	85.2%	1.09	1.19	90.1%	91.0%	90.0%	58.1%	41.9%	71.6%	55.8%
Executive Management	52	53	1.01	41.5%	58.5%	1.00	1.02	92.5%	92.5%	93.5%	100.0%	0.0%	100.0%	100.0%
Senior Management (VIII & GM)	237	243	1.02	30.0%	70.0%	1.02	1.03	93.4%	93.4%	94.7%	95.5%	4.5%	95.9%	95.3%
Management (VIII & above)	290	296	1.02	32.1%	67.9%	1.01	1.02	93.2%	90.5%	94.5%	96.3%	3.7%	96.8%	96.0%
Middle Management (V-VII)	711	765	1.08	20.4%	79.6%	1.04	1.08	93.2%	93.2%	93.9%	77.9%	22.1%	85.3%	76.0%
Other Administrative	15	15	1.01	20.0%	80.0%	1.00	1.02	100.0%	100.0%	100.0%	93.3%	6.7%	100.0%	91.7%
Administrative/ Supervisory (V to VII)	726	780	1.07	20.4%	79.6%	1.04	1.08	93.3%	90.6%	94.0%	78.2%	21.8%	85.5%	76.3%
Clerical (III & IV)	1,268	1,499	1.18	8.7%	91.3%	1.09	1.19	86.3%	79.4%	86.9%	61.2%	38.8%	80.2%	59.4%
Management & Administrative	2,284	2,575	1.13	15.0%	85.0%	1.05	1.14	89.2%	86.8%	89.6%	70.4%	29.6%	86.5%	67.5%
Catering	310	350	1.13	32.9%	67.1%	1.05	1.17	95.1%	95.1%	97.0%	67.7%	32.3%	89.6%	57.0%
Household Services	873	1,109	1.27	16.9%	83.1%	1.22	1.28	86.5%	86.5%	88.2%	47.3%	52.7%	70.6%	42.6%
Other Labs & Associated	1	1	1.00		100.0%		1.00	100.0%	100.0%	100.0%	100.0%	0.0%		100.0%
Other Support	166	260	1.57	51.9%	48.1%	1.29	2.06	91.5%	91.5%	96.8%	31.9%	68.1%	49.6%	12.8%
Portering	97	105	1.09	98.1%	1.9%	1.08	1.30	86.7%	86.7%	100.0%	81.9%	18.1%	82.5%	50.0%

Support	1,446	1,825	1.26	29.6%	70.4%	1.17	1.31	88.9%	84.6%	90.7%	51.1%	48.9%	71.7%	42.4%
Maintenance	208	224	1.08	95.5%	4.5%	1.07	1.29	92.9%	92.9%	100.0%	82.6%	17.4%	85.0%	30.0%
Technical Services	15	15	0.99	80.0%	20.0%	0.99	1.00	93.3%	93.3%	100.0%	100.0%	0.0%	100.0%	100.0%
Maintenance/ Technical	223	239	1.07	94.6%	5.4%	1.06	1.21	92.9%	92.5%	100.0%	83.7%	16.3%	85.8%	46.2%
General Support	1,669	2,064	1.24	37.1%	62.9%	1.13	1.31	89.3%	86.9%	90.8%	54.8%	45.2%	75.8%	42.4%
HCA (Student Nurse/Midwife COVID-19)	14	25	1.76	20.0%	80.0%	2.18	1.67	0.0%	0.0%	0.0%	20.0%	80.0%	40.0%	15.0%
HCA, Nurse's Aide, etc.	11,132	12,941	1.16	22.0%	78.0%	1.09	1.18	85.0%	85.0%	85.1%	56.2%	43.8%	70.9%	52.1%
Health & Social Care Assistants	39	45	1.16	22.2%	77.8%	1.08	1.18	84.4%	84.4%	80.0%	71.1%	28.9%	90.0%	65.7%
Health Care Assistants	11,185	13,011	1.16	22.0%	78.0%	1.09	1.18	84.8%	84.5%	84.9%	56.2%	43.8%	70.9%	52.1%
Home Help	3,381	5,168	1.53	3.5%	96.5%	1.48	1.53	63.7%	32.2%	64.9%	39.8%	60.2%	52.2%	39.3%
Care, other	1,853	2,185	1.18	25.6%	74.4%	1.15	1.19	87.4%	82.1%	89.2%	62.0%	38.0%	71.3%	58.8%
Patient & Client Care	16,420	20,364	1.24	17.7%	82.3%	1.12	1.27	79.7%	81.5%	79.3%	52.7%	47.3%	70.0%	49.0%

Employment by WTE, Headcount, Gender, Full-Time /Part-Time etc.: Feb 2021

Social Care Services CHO	WTE	Headcount	WTE: no.	% Male	% female	Male WTE: no.	Female WTE: no.	% Total Perm	% Male Perm	% Female Perm	% Total Full Time	% Total Part Time	% Male FT	% Female FT
Overall	32,302	38,856	1.20	16.5%	83.5%	1.11	1.22	84.5%	84.1%	84.5%	57.9%	42.1%	73.6%	54.8%
CHO 1	3,439	4,019	1.17	16.1%	83.9%	1.10	1.18	79.9%	79.9%	78.6%	58.2%	41.8%	80.4%	53.9%
HSE	1,783	2,113	1.19	13.5%	86.5%	1.04	1.21	90.1%	90.1%	90.8%	50.5%	49.5%	89.5%	89.5%
Section 38	1,287	1,628	1.26	23.1%	76.9%	1.24	1.27	81.4%	81.4%	81.3%	39.3%	60.7%	43.9%	43.9%
CHO 2	3,070	3,741	1.22	17.7%	82.3%	1.15	1.24	86.3%	86.3%	86.9%	45.7%	54.3%	63.5%	41.8%
HSE	1,202	1,544	1.28	12.6%	87.4%	1.05	1.33	91.4%	91.4%	92.5%	52.2%	47.8%	88.7%	88.7%
Section 38	1,792	2,136	1.19	11.9%	88.1%	1.16	1.20	84.3%	84.3%	84.6%	37.9%	62.1%	38.2%	38.2%
CHO 3	2,993	3,680	1.23	12.2%	87.8%	1.11	1.25	87.3%	87.3%	87.9%	43.9%	56.1%	60.0%	41.7%
HSE	3,219	4,190	1.30	12.4%	87.6%	1.15	1.33	66.9%	66.9%	68.4%	75.7%	24.3%	87.6%	87.6%
Section 38	2,250	2,742	1.22	19.4%	80.6%	1.15	1.24	85.3%	85.3%	86.8%	63.6%	36.4%	67.7%	67.7%
CHO 4	5,469	6,932	1.27	15.1%	84.9%	1.15	1.29	74.2%	74.2%	75.3%	70.9%	29.1%	77.5%	69.7%
HSE	2,067	2,496	1.21	10.2%	89.8%	1.09	1.22	83.5%	83.5%	83.2%	50.7%	49.3%	81.5%	81.5%
Section 38	1,166	1,368	1.17	20.8%	79.2%	1.10	1.19	82.5%	82.5%	81.7%	47.5%	52.5%	58.8%	58.8%
CHO 5	3,233	3,864	1.20	13.9%	86.1%	1.10	1.21	83.2%	83.2%	82.7%	49.6%	50.4%	69.5%	46.3%
HSE	579	639	1.10	21.0%	79.0%	1.05	1.12	83.3%	83.3%	84.4%	75.3%	24.7%	89.6%	89.6%
Section 38	1,456	1,642	1.13	23.0%	77.0%	1.07	1.15	93.6%	93.6%	93.4%	69.6%	30.4%	83.3%	83.3%
CHO 6	2,034	2,281	1.12	22.4%	77.6%	1.06	1.14	90.7%	90.7%	90.8%	71.2%	28.8%	85.0%	67.2%
HSE	1,143	1,383	1.21	15.5%	84.5%	1.12	1.23	89.2%	89.2%	90.2%	63.4%	36.6%	79.5%	79.5%
Section 38	2,946	3,447	1.17	23.2%	76.8%	1.09	1.20	88.8%	88.8%	88.8%	67.6%	32.4%	80.8%	80.8%
CHO 7	4,089	4,830	1.18	21.0%	79.0%	1.10	1.21	88.9%	88.9%	89.2%	66.4%	33.6%	80.5%	62.6%
HSE	2,090	2,590	1.24	12.5%	87.5%	1.13	1.26	83.7%	83.7%	83.3%	52.0%	48.0%	77.2%	77.2%
Section 38	1,610	1,950	1.21	21.7%	78.3%	1.14	1.23	94.7%	94.7%	94.6%	41.7%	58.3%	48.2%	48.2%
CHO 8	3,700	4,540	1.23	16.5%	83.5%	1.14	1.25	88.4%	88.4%	87.8%	47.6%	52.4%	60.8%	45.0%
HSE	1,122	1,250	1.11	25.4%	74.6%	1.05	1.14	89.0%	89.0%	89.2%	79.2%	20.8%	90.5%	90.5%
Section 38	3,070	3,633	1.18	12.2%	87.8%	1.10	1.20	89.5%	89.5%	89.5%	53.3%	46.7%	67.2%	67.2%
CHO 9	4,193	4,883	1.16	15.6%	84.4%	1.08	1.18	89.4%	89.4%	89.4%	59.9%	40.1%	76.9%	56.8%
other Community Services	81	86	1.06	24.4%	75.6%	1.05	1.07	81.4%	81.4%	81.5%	87.2%	12.8%	90.5%	86.2%

Summary Staff Movement: February 2021

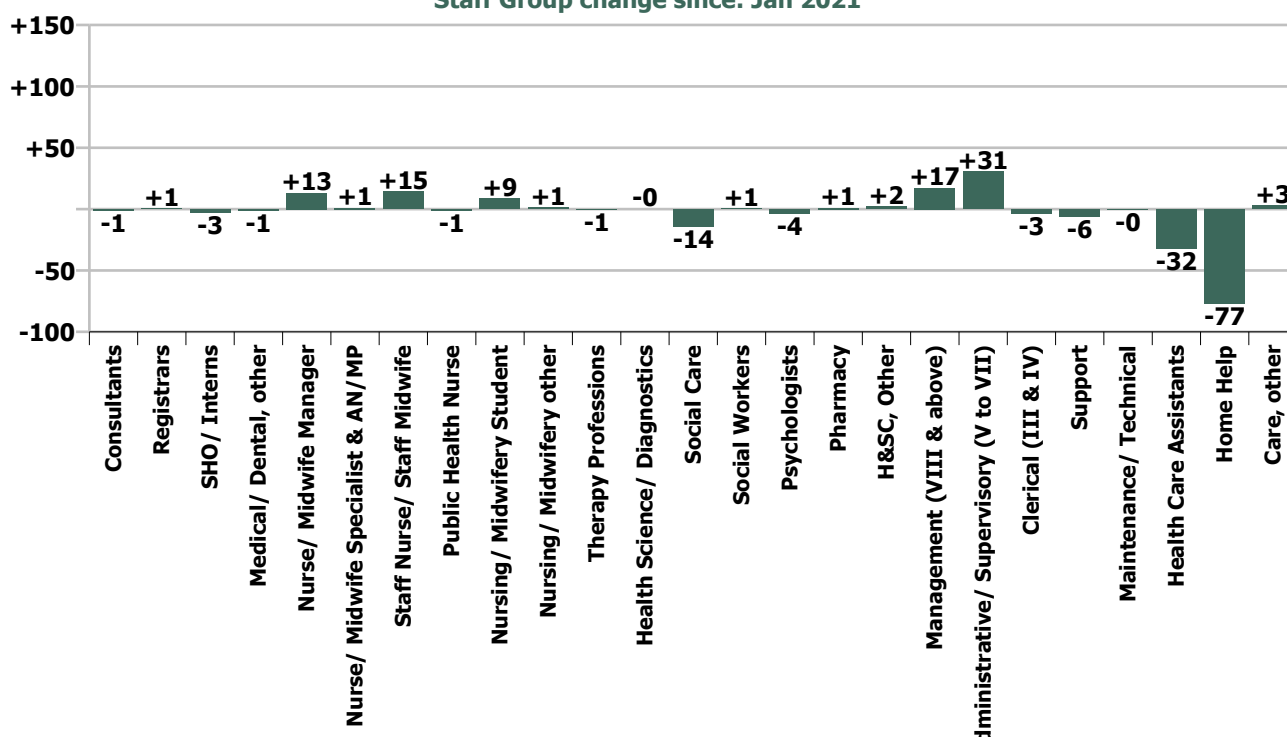
Month-on-month
Summary

WTE change since Jan 21	% change since Jan 21	overall	Consultants	Registrars	SHO/ Interns	Medical/ Dental, other	Medical & Dental	Nurse/ Midwife Manager	Nurse/ Midwife Specialist & AN/MP	Staff Nurse/ Staff Midwife	Public Health Nurse	Nursing/ Midwifery Student	Nursing/ Midwifery other	Nursing & Midwifery	Therapy Professions	Health Science/ Diagnostics	Social Care	Social Workers	Psychologists	Pharmacy	H&SC, Other	Health & Social Care Professionals	Management (VIII & above)	Administrative Supervisory (V to VII)	Clerical (III & IV)	Management & Administrative	Support	Maintenance/ Technical	General Support	Health Care Assistants	Home Help	Care, other	Patient & Client Care
Overall	-0.2%	-49	-1.0	+0.8	-2.6	-1.4	-4.3	+13.1	+1.1	+14.5	-0.9	+8.7	+1.4	+37.9	-0.8	-0.1	-14.3	+0.8	-3.6	+0.9	+1.9	-15.1	+17.3	+30.9	-3.4	+44.8	-5.8	-0.4	-6.2	-32.1	-77.4	+2.9	-106.5
CHO 1	+0.3%	+9				-1.1	-1.2	-0.2	-0.0	-1.5		+14.5		+12.8	+2.4	+0.1	-0.2	+0.4	-0.1			+2.5	+0.3	+1.8	-0.6	+1.5	-2.4	+0.4	-1.9	+5.5	-9.2	-1.3	-4.9
Disabilities	+0.5%	+8				-0.0	-0.0	+2.9	-0.1	+2.0		-0.6		+4.2	-0.2		-0.5	+1.3	+0.1		+2.0	+2.7	+1.0	-1.4	+0.5	+0.0	+1.5	+0.9	+1.5	+0.9	-1.2	-0.3	
Older People	-0.9%	-14				-0.1	-0.1	+3.3		-1.5				+1.8	+0.4			-0.0				+0.4		+0.7	-4.1	-3.4	-1.0	+0.1	-0.9	+4.3	-20.1	+3.8	-12.0
CHO 2	-0.2%	-6				-0.1	-0.1	+6.2	-0.1	+0.6		-0.6		+6.0	+0.3		-0.5	+1.4	+0.1		+2.0	+3.2	+1.0	-0.7	-3.6	-3.3	+0.5	+0.1	+0.6	+5.2	-20.1	+2.6	-12.3
Disabilities	-0.2%	-3	-0.0				-0.0	+1.6		-3.6				-2.0	-3.8		+4.9	-0.4	-0.2		-1.0	-0.7		+2.3	-0.4	+2.0	+0.1	+0.1	-4.6	-3.6	+1.8	-2.8	
Older People	+1.6%	+17						-1.3		+5.6	-0.0			+4.2	-0.7	-0.1		-1.1				-1.9	-0.4		+0.3	-0.1	+1.4	+0.8	+2.1	+8.2	-0.6	+4.9	+12.5
CHO 3	+0.4%	+13	-0.0				-0.0	+0.3	-0.0	+1.9	-0.0			+2.2	-4.5	-0.1	+4.9	-1.6	-0.2		-1.0	-2.6	-0.4	+2.3	-0.1	+1.9	+1.5	+0.7	+2.2	+3.6	-0.6	+6.7	+9.7
Disabilities	-0.7%	-17						-2.8		+0.3		+0.7		-1.8	+0.4		+0.3	+1.0	-0.0		-0.1	+1.6	+0.1	-0.4	-1.1	-1.4	-1.7	-0.0	-1.7	-15.5		+1.7	-13.9
Older People	-0.6%	-18				-0.9	-0.9	+2.2	-1.0	+2.8				+4.0	+5.8			-0.3		-0.0		+5.4	-0.2	+0.8	-2.5	-1.8	-1.4	-1.4	+1.6	-25.0	+0.5	-22.9	
CHO 4	-0.6%	-35				-0.9	-0.9	-0.6	-1.1	+3.1		+0.7		+2.2	+6.2		+0.3	+0.7	-0.0	-0.0	-0.1	+7.0	-0.1	+0.5	-3.6	-3.3	-3.1	-0.0	-3.1	-13.9	-25.0	+2.1	-36.8
Disabilities	+1.1%	+18						+1.3		-3.3	-0.0	+1.3	+0.8	+0.1	+3.0		-3.7	+0.9	-0.5		-0.1	-0.3	+3.0	+7.0	+0.9	+10.9	-0.5	-0.5	+8.7	-3.6	+2.6	+7.7	
Older People	-1.3%	-22				+0.6	+0.6	+0.5	-0.1	+0.5	-0.9			+0.1	+0.2							+0.2	+1.0	-1.1	+3.0	+2.9	+0.9	+0.1	+0.9	-6.3	-18.9	-1.3	-26.5
CHO 5	-0.1%	-4				+0.6	+0.6	+1.9	-0.1	-2.8	-0.9	+1.3	+0.8	+0.1	+3.2		-3.7	+0.9	-0.5		-0.1	-0.1	+4.0	+5.9	+3.9	+13.8	+0.4	+0.1	+0.4	+2.4	-22.5	+1.3	-18.8
Disabilities	+1.4%	+17		-0.2			-0.2	+1.7		-3.6				-1.9	+0.8		-13.6	-0.8	+1.6		+0.3	-11.7	+11.7	+19.1	+12.5	+43.3	+0.5	+0.5	-2.3		-10.7		-13.1
Older People	+0.2%	+1				+0.1	+0.1	+1.0		-2.1				-1.2	+2.2			-0.0	+0.9			+3.0		+1.6	-2.3	-0.6	-0.4	+1.1		-0.6	+0.5		
CHO 6	+0.9%	+19		-0.2		+0.1	-0.1	+2.7		-5.7				-3.1	+3.0		-13.6	-0.8	+2.4		+0.3	-8.7	+11.7	+20.7	+10.3	+42.7	+0.2	+0.2	-1.2		-11.3	-12.5	
Disabilities	-0.9%	-26		+0.2	+0.2		+0.4	-0.8		-5.2				-5.9	-9.8		-0.4	+0.2	-1.5	+0.6		-10.8	+1.5	-0.0	-1.0	+0.4	-2.8	+0.1	-2.6	-15.5	+1.1	+6.5	-7.8
Older People	-0.8%	-8					+1.6	+0.0	+0.8			-0.2		+2.3	+0.6			-0.6				-0.0	+0.0	+0.0	-0.7	-0.6	-0.4	-0.4	-10.6	+1.3	-0.1	-9.4	
CHO 7	-0.8%	-35		+0.2	+0.2		+0.4	+0.9	+0.0	-4.3		-0.2		-3.7	-9.2		-0.4	-0.4	-1.5	+0.6		-10.9	+1.5	+0.0	-1.7	-0.1	-3.1	+0.1	-3.0	-26.1	+2.4	+6.5	-17.2
Disabilities	-0.7%	-16	-1.0				-1.0	+0.4	-0.8	+15.7		-6.7	+0.6	+9.3	-1.3		-5.6	+0.7	+0.6		+0.6	-5.0	-0.0	-3.5	-0.9	-4.4	-1.0	-1.0	-2.0	-13.3	+0.2	-0.2	-13.3
Older People	+0.0%	+0					+0.9	+1.0	+0.6	+0.0				+2.5	-0.4			+0.0		+0.3		-0.0	-0.0	+0.2	-4.1	-3.9	+0.4	-0.8	-0.4	+5.0	-2.6	-0.4	+1.9
CHO 8	-0.4%	-16	-1.0				-1.0	+1.3	+0.3	+16.3	+0.0	-6.7	+0.6	+11.8	-1.7		-5.6	+0.7	+0.6	+0.3	+0.6	-5.1	-0.1	-3.3	-4.9	-8.3	-0.6	-1.8	-2.4	-8.3	-2.4	-0.6	-11.4
Disabilities	+0.2%	+7	-0.0	+0.8	-1.5		-0.8	+0.9	+2.0	+10.2		-0.2	-0.0	+12.8	-0.2		+4.6	-1.4	-4.4		+0.2	-1.2	+2.0	-0.7	+1.3	+0.6	-0.0	+0.6	-2.6		-3.4	-6.0	
Older People	-0.0%	-0	-0.0		-1.3		-1.3	-0.1	-0.0	-3.2				-3.4	-0.3			+1.0				+0.7	-0.6	+1.0	-0.4	-0.0	+0.1	+0.1	+3.3		+0.4	+3.7	
CHO 9	+0.2%	+7	-0.0	+0.8	-2.8		-2.1	+0.7	+2.0	+7.0		-0.2	-0.0	+9.4	-0.5		+4.6	-0.5	-4.4		+0.2	-0.5	-0.6	+3.0	-1.1	+1.3	+0.7		+0.7	+0.7		-3.0	-2.3
Disabilities	-0.5%	-0																						-0.1	+0.7	-1.8	-1.2						
Older People	-1.6%	-1																						-0.1	+0.7	-1.9	-1.3						
other Community Services	-1.5%	-1																						-0.1	+0.7	-1.9	-1.3						0.0
		-0.2%	-3.8%	+4.0%	-12.7%	-1.4%	-2.5%	+0.8%	+1.0%	+0.3%	-4.5%	+9.7%	+4.9%	+0.5%	-0.1%	-0.2%	-0.5%	+0.2%	-1.5%	+4.0%	+2.5%	-0.3%	+6.4%	+4.4%	-0.3%	+2.0%	-0.4%	-0.2%	-0.4%	-0.3%	-2.2%	+0.2%	-0.6%

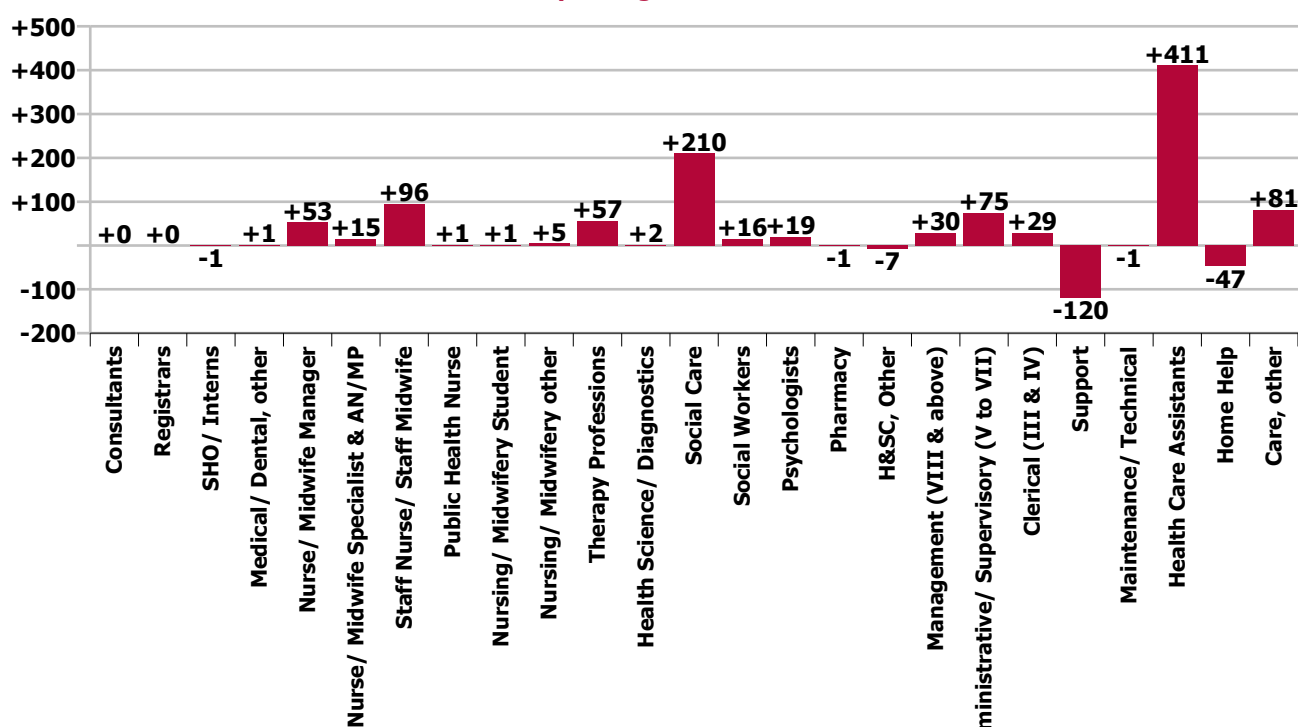
Year-on-year Summary

WTE change since Feb 20	% change since Feb 20	overall	Consultants	Registrars	SHO/ Interns	Medical/ Dental, other	Medical & Dental	Nurse/ Midwife Manager	Nurse/ Midwife Specialist & AN/MP	Staff Nurse/ Staff Midwife	Public Health Nurse	Nursing/ Midwifery Student	Nursing/ Midwifery other	Nursing & Midwifery	Therapy Professions	Health Science/ Diagnostics	Social Care	Social Workers	Psychologists	Pharmacy	H&SC, Other	Health & Social Care Professionals	Management (VIII & above)	Administrative Supervisory (V to VII)	Clerical (III & IV)	Management & Administrative	Support	Maintenance/ Technical	General Support	Health Care Assistants	Home Help	Care, other	Patient & Client Care	
Overall	+2.9%	+925	+0	+0	-1	+1	+0	+53	+15	+96	+1	+1	+5	+170	+57	+2	+210	+16	+19	-1	-7	+296	+30	+75	+29	+133	-120	-1	-121	+411	-47	+81	+446	
Disabilities	+3.4%	+52				-0	-0	+2	+2	+9		+6	-1	+18	-2		+3	+2	+7		-3	+6	+3	+8	+2	+13	+1	+0	+2	+9	+1	+3	+13	
Older People	+2.8%	+51				-2	-2	-2	+1	+6			+1	+6	+5	+0		-0				+5		+4	-0	+4	-5	-1	-6	+17	+33	-6	+45	
CHO 1	+3.1%	+103				-2	-2	+0	+3	+14		+6	+0	+24	+2	+11	+3	+1	+7		-3	+11	+3	+12	+2	+16	-4	-1	-5	+27	+34	-3	+58	
Disabilities	+1.9%	+27		-1		-0	-1	+1	-0	+0			+0	+1	-6		+25	+0	-1		-4	+14	+2	+4	-0	+6	-8	-0	-8	+15		+0	+15	
Older People	+0.8%	+12				-0	-0	+13		+1	+0			+14	+1			+1		+0		+2	+0	-0	-9	-9	-0	+0	+0	+17	-24	+11	+5	
CHO 2	+1.3%	+39			-1		-0	-1	+14	-0	+2	+0		+16	-5		+25	+1	-1	-1	+0	-4	+16	+2	+4	-10	-4	-8	+0	-8	+32	-24	+12	+19
Disabilities	+6.7%	+122	+0				+0	-0	-2	+16		-4		+10	+4	+2	+39	+0	+2		-0	+48	+1	+6	+1	+7	-5	+6	+1	+49		+6	+55	
Older People	+9.9%	+95				+1	+1	+2	+2	+3				+7	+1			-1				-0	-0	-0	+2	+1	+0	+0	+0	+36	+42	+7	+85	
CHO 3	+7.8%	+217	+0			+1	+1	+2	-0	+19		-4		+17	+5	+2	+39	-1	+2		-0	+48	+1	+5	+2	+9	-4	+6	+2	+85	+42	+13	+140	
Disabilities	+5.2%	+128					-2	+1	+5		+4	-1		+6	-3		+15	+1	+2		+2	+17	+1	+0	+7	+8	-3	+2	-1	+78		+20	+98	
Older People	+0.0%	+1			+1	-1	+0	+5	+0	+12	+2	-1		+19	+6			+1		-0		+7	+2	+3	+4	+10	+14	+1	+15	+19	-71	+3	-49	
CHO 4	+2.4%	+129				+1	-1	+0	+3	+1	+17	+2	+3	-1	+25	+3		+15	+1	+2	-0	+2	+24	+3	+3	+11	+18	+11	+3	+13	+97	-71	+23	+49
Disabilities	+5.4%	+82	-0				-0	+2	+2	-7	+1	+1	+1	+0	+8		-7	+5	+5		-3	+8	+4	+10	+5	+18	+0	-1	-1	+61	-14	+9	+56	
Older People	+0.9%	+15				+6	+6	+4	+2	-1	-2	-2		+1	-7			+0				-6	+1	+6	+7	+14	-37	-4	-41	+39	+5	-3	+41	
CHO 5	+3.1%	+96	-0			+6	+6	+6	+4	-8	-1	-2	+1	+1	+1		-7	+5	+5		-3	+2	+5	+16	+12	+32	-37	-5	-42	+100	-9	+7	+97	
Disabilities	+3.2%	+38	+0	+1			+1	+1		+1				+2	+4		+32	-0	-0		+0	+35	-1	-1	+3	+1	-17	-2	-19	+12		+6	+17	
Older People	-1.9%	-16		+1		-1	-0	-6		-7				-13	+0			-0	+0	-0	-0		-0	+0	+1	+3	+4	-1	-5	-0		-1	-2	
CHO 6	+1.1%	+22	+0	+2		-1	+1	-5	-22	-6				-11	+4		+32	-0	-0	-0	+0	+35	-1	-0	+7	+5	-21	-3	-24	+11		+4	+16	
Disabilities	+2.6%	+78					+2	-1	+1		+1	-1	+1	+3	+2		+23	-1	-0	-1		+22	+7	+11	+1	+19	-14	+2	-12	+28	-2	+20	+46	
Older People	+1.6%	+16				-2	-2	+10	-0	+27		+1		+38	+2			+2		-1		+3	+2	+4	+1	+8	+10		+10	-36	-4	+0	-40	
CHO 7	+2.4%	+94				-2	-2	+12	-1	+28		+1	+1	+41	+4		+23	+1	-0	-2		+25	+9	+15	+2	+27	-4	+2						
Disabilities	+4.1%	+87	-1				-1	+4	-2	+9			-8	+0	+4		+23	+1	-0	-2	-1	+28	+5	-4	+3	+4	-1	-3	-4	+56	+1	+0	+57	
Older People	-0.2%	-2						+12	+3	+4	+1		+2	+21	+4			+0		+1		+5	+1	-3	-2	-2	-1	-3	-12	-13	+2	-24		
CHO 8	+2.4%	+85	-1				-1	+16	+1	+13	+1	-8	+2	+25	+10		+23	+1	-0	+1	-1	+33	+6	-4	+0	+2	-4	-4	-8	+44	-13	+2	+33	
Disabilities	+2.6%	+82	+1	-1	-1		-0	+2	+5	+8		+5	+1	+21	+14		+57	+2	+5		+1	+78	+5	+16	-7	+13	-50	-0	-50	+17	+4	+21		
Older People	+5.9%	+50	-0		-2		-2	+3	+1	+10	-0		+13	+18			+4	+3		+1	+23	+2	+7	+3	+8	+3	+6	+3	+6		-1	+6	+26	
CHO 9	+3.3%	+132	+1	-1	-2		-2	+4	+6	+18	-0	+5	+1	+34	+31		+57	+6	+5	+1	+1	+101	+3	+22	-4	+21	-48		-48	+23		+3	+26	
Disabilities	+19.6%	+1																						+1	-0	+1							+0	
Older People	+7.9%	+6																						-1	+0	+6	+5			+0			+0	
other Community Services	+8.7%	+6																						-1	+1	+6	+6						+0	
		+2.9%	+0.3%	+1.5%	-7.1%	+1.4%	+0.3%	+3.3%	+16.1%	+1.9%	+6.3%	+1.3%	+18.9%	+2.4%	+5.3%	+10.2%	+8.1%	+5.0%	+9.0%	-3.7%	-8.4%	+6.9%	+11.3%	+11.5%	+2.4%	+6.2%	-7.6%	-0.6%	-6.8%	+3.8%	-1.4%	+4.6%	+2.8%	

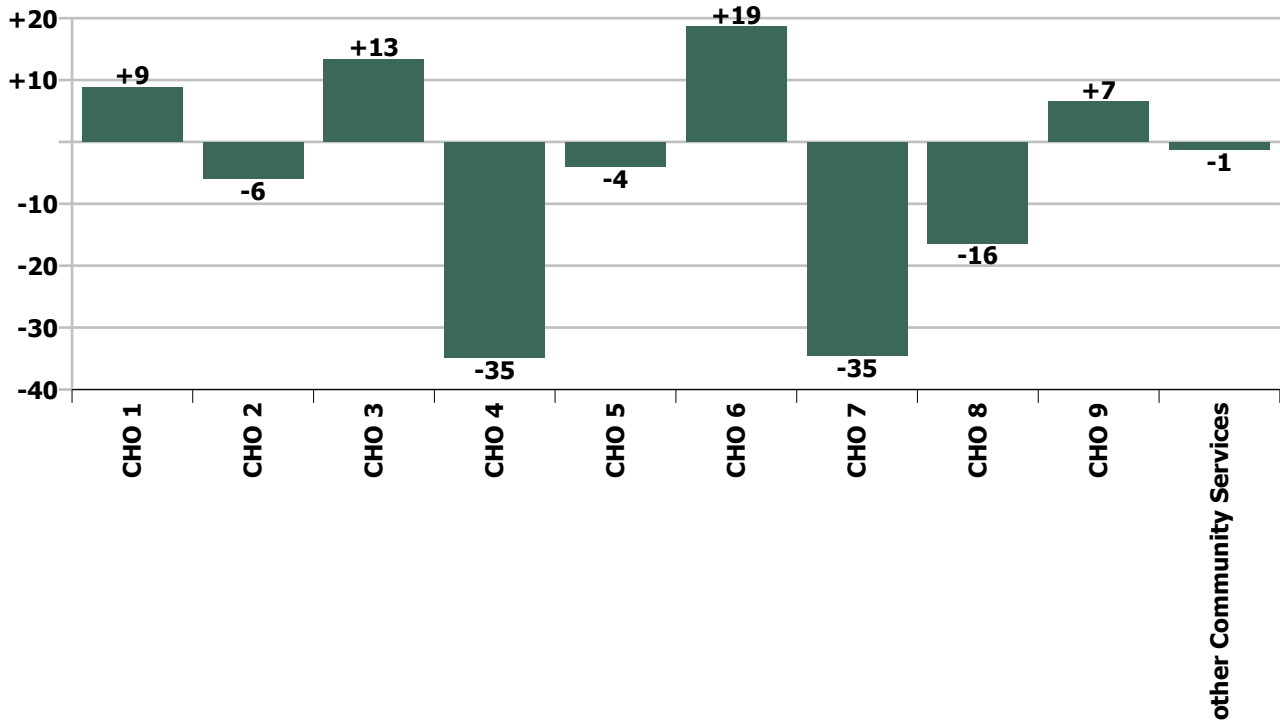
Staff Group change since: Jan 2021



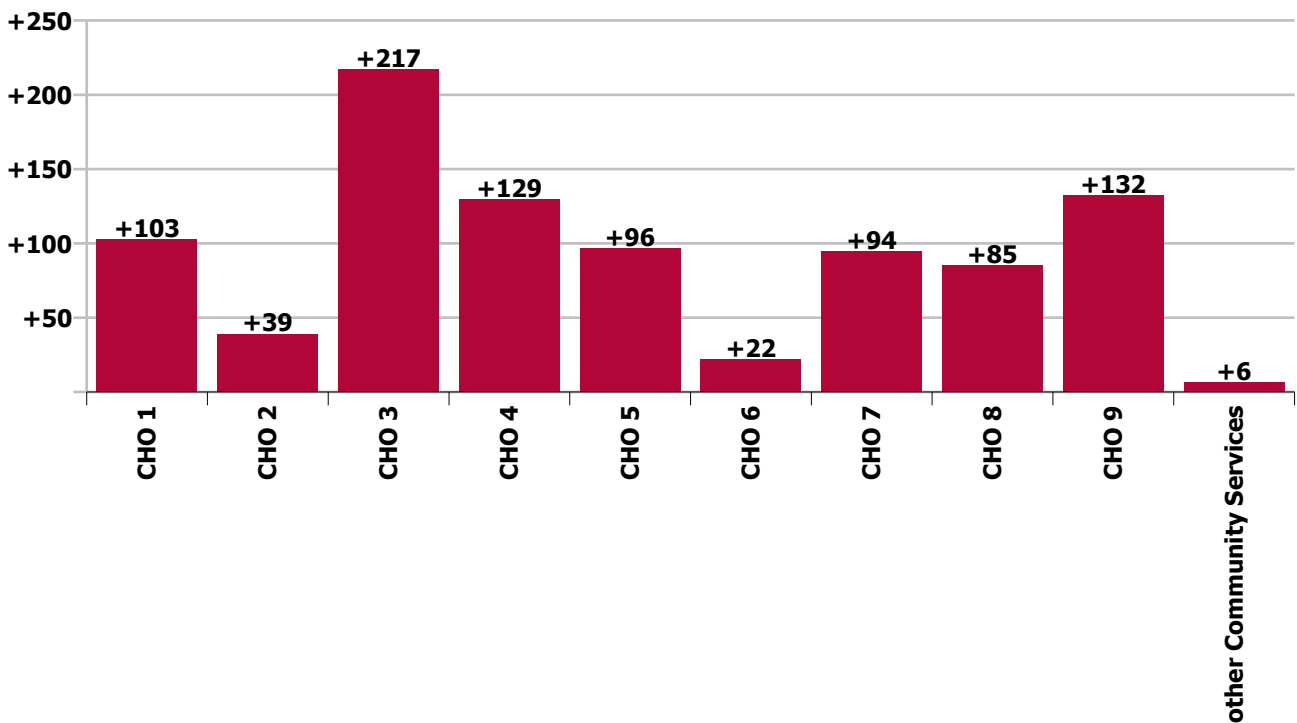
Staff Group change since: Feb 2020



CHO change since: Jan 2021



CHO change since: Feb 2020



Longitudinal Employment Levels by Grade Group - Dec 2015 to Feb 2021

Feb 2021 (Dec 2015 figure: 28,322)	WTE Feb 2021	WTE change since Dec 15	WTE change since Dec 16	WTE change since Dec 17	WTE change since Dec 18	WTE change since Dec 19	WTE change since Dec 20	% change since Dec 15	% change since Dec 16	% change since Dec 17	% change since Dec 18	% change since Dec 19	% change since Dec 20
Overall	32,302	+3,981	+3,066	+1,802	+1,178	+767	-57	+14.1%	+10.5%	+5.9%	+3.8%	+2.4%	-0.2%
Consultant Medicine	4	-4	-7	-5	+0	+0	-0	-50.7%	-63.1%	-56.1%	+12.2%	+12.2%	-8.6%
Consultant Paediatrics	3	-0	-0	-0				-3.5%	-5.0%	-2.9%			
Consultant Psychiatry	20	-2	-2	-4	+2	-1	-2	-10.9%	-11.3%	-17.6%	+9.0%	-6.3%	-8.6%
Consultant Surgery		-1	-1	-0	-0			-100.0%	-100.0%	-100.0%	-100.0%	-100.0%	-100.0%
Consultants	27	-8	-10	-10	+2	-1	-2	-22.6%	-28.1%	-26.4%	+7.8%	-3.2%	-7.7%
Registrar	13	-1	+2	-0	+1	-0	+4	-5.5%	+15.6%	-1.5%	+5.0%	-1.5%	+50.6%
Senior Registrar	3	-1		-1	-1		-1	-25.0%		-25.0%	-25.0%		-25.0%
Specialist Registrar	4	-1		-1	+2	-2		-20.0%		-20.0%	+100.0%	-33.3%	
Registrars	20	-3	+2	-2	+2	-2	+3	-12.0%	+9.7%	-9.8%	+8.7%	-9.8%	+20.6%
SHO/ Interns	18	+2	+2	+1	-1	-4	-5	+14.0%	+12.9%	+6.4%	-4.7%	-18.0%	-20.6%
Dentists		-1						-100.0%	-100.0%	-100.0%	-100.0%	-100.0%	-100.0%
Other Medical	100	+2	-0	+0	+1	-10	-18	+2.2%	-0.4%	+0.2%	+0.8%	-9.4%	-15.0%
Medical/ Dental, other	100	+2	-0	+0	+1	-10	-18	+1.7%	-0.4%	+0.2%	+0.8%	-9.4%	-15.0%
Medical & Dental	165	-7	-7	-10	+3	-17	-21	-3.9%	-4.0%	-5.9%	+2.1%	-9.6%	-11.3%
Clinical Nurse/ Midwife Manager	1,362	+35	+16	+25	+29	+43	+11	+2.7%	+1.2%	+1.9%	+2.2%	+3.2%	+0.8%
Director Nursing/Midwifery, Assistant	151	+29	+21	+22	+26	+8	-1	+23.3%	+16.3%	+17.3%	+21.1%	+5.3%	-0.6%
Director of Nursing/Midwifery	144	+16	+15	+16	+23	+3	+2	+12.1%	+11.6%	+12.1%	+19.1%	+2.2%	+1.7%
Nurse/ Midwife Manager	1,656	+80	+52	+63	+78	+53	+13	+5.0%	+3.2%	+3.9%	+5.0%	+3.3%	+0.8%
Advanced Nurse/ Midwife Practitioner	27	+24	+23	+22	+18	+14	+2	+786.0%	+564.5%	+431.6%	+196.0%	+109.0%	+8.0%
Clinical Nurse/ Midwife Specialist	79	-12	-5	-1	-4	+3	+1	-12.8%	-5.9%	-0.7%	-5.4%	+3.8%	+1.3%
Nurse/ Midwife Specialist & AN/MP	105	+12	+18	+21	+13	+17	+3	+12.9%	+20.2%	+24.9%	+14.3%	+19.0%	+2.9%
Graduate Nursing/ Midwifery		-13						-100.0%	-100.0%	-100.0%	-100.0%	-100.0%	-100.0%
Staff Midwives	1	+0	+1	-1	+1	+1	+0	+12.5%	+125.0%	-50.0%	-100.0%	-100.0%	+2.3%
Staff Nurse [Intellectual Disability]	1,665	-116	-61	-39	-21	+67	-125	-6.5%	-3.6%	-2.3%	-1.2%	+4.2%	-7.0%
Staff Nurse [Psychiatric]	204	+94	+114	+128	+128	+116	+146	+85.3%	+125.8%	+168.5%	+166.9%	+130.7%	+252.8%
Staff Nurses [General/ Children's]	3,375	-129	-141	-110	-97	-88	+6	-3.7%	-4.0%	-3.2%	-2.8%	-2.5%	+0.2%
Staff Nurse/ Staff Midwife	5,245	-164	-88	-22	+10	+96	+28	-3.0%	-1.6%	-0.4%	+0.2%	+1.9%	+0.5%
Public Health Nurse	19	-3	-1	-1	-1	-0	-1	-14.4%	-6.3%	-6.8%	-4.0%	-1.2%	-4.4%
Pre-registration Nurse/ Midwife Intern	75	+61	+63	+64	+40	+47	+73	+427.4%	+527.6%	+538.8%	+116.3%	+166.6%	+2912.4%
Pre-registration Nurse Intern (COVID-19)	10	+10	+10	+10	+10	+10	-22	-100.0%	-100.0%	-100.0%	-100.0%	-100.0%	-70.1%
Post-registration Nurse/ Midwife Student						-1		-100.0%	-100.0%	-100.0%	-100.0%	-100.0%	-100.0%
Nursing/ Midwifery awaiting registration	14	+14	+14	+0	+14	-1	-0	-100.0%	-100.0%	+1.9%	-100.0%	-3.8%	-0.6%
Nursing/ Midwifery Student	99	+85	+87	+73	+64	+55	+50	+593.8%	+725.7%	+284.2%	+184.5%	+124.7%	+103.7%
Nursing Education/Clinical	28	+7	+6	+6	+6	+6	+1	+30.6%	+25.7%	+26.6%	+26.2%	+26.1%	+4.4%
Other Nursing/ Midwifery	1	-5	-4	-4				-84.5%	-80.0%	-80.0%			
Nursing/ Midwifery other	29	+1	+2	+2	+6	+6	+1	+3.9%	+6.3%	+6.9%	+25.1%	+25.0%	+4.3%
Nursing & Midwifery	7,154	+11	+69	+135	+171	+227	+94	+0.1%	+1.0%	+1.9%	+2.5%	+3.3%	+1.3%

Feb 2021 (Dec 2015 figure: 28,322)	WTE Feb 2021	WTE change since Dec 15	WTE change since Dec 16	WTE change since Dec 17	WTE change since Dec 18	WTE change since Dec 19	WTE change since Dec 20	% change since Dec 15	% change since Dec 16	% change since Dec 17	% change since Dec 18	% change since Dec 19	% change since Dec 20
Overall	32,302	+3,981	+3,066	+1,802	+1,178	+767	-57	+14.1%	+10.5%	+5.9%	+3.8%	+2.4%	-0.2%
Dietitians	37	+15	+8	+8	+6	+2	+3	+67.5%	+28.1%	+26.3%	+19.8%	+6.7%	+8.0%
Occupational Therapists	412	+118	+65	+69	+67	+35	+21	+40.2%	+18.7%	+20.0%	+19.5%	+9.2%	+5.2%
Physiotherapists	332	+46	+32	+27	+24	+20	+7	+16.3%	+10.6%	+8.8%	+7.9%	+6.3%	+2.3%
Podiatrists & Chiropodists	15	+3	-0	-1	-0	+3	+2	+21.1%	-0.9%	-9.3%	-2.0%	+21.6%	+15.8%
Speech & Language Therapists	322	+88	+31	+15	+20	+6	-5	+37.8%	+10.5%	+5.0%	+6.5%	+1.9%	-1.6%
Therapy Professions	1,118	+270	+136	+117	+117	+65	+27	+31.9%	+13.8%	+11.7%	+11.7%	+6.2%	+2.5%
Audiology		-14	-13	-18				-100.0%	-100.0%	-100.0%	-100.0%	-100.0%	-100.0%
Clinical Engineering	14	-4	-4	-4	+2	+1	+1	-22.9%	-23.8%	-22.5%	+16.2%	+7.3%	+7.7%
Clinical Measurement	2	+1	+1	+1	+1	+1	-0	+100.0%	+100.0%	+100.0%	+85.2%	+65.3%	-7.4%
Medical Science	4	+1		+1				+33.3%		+33.3%			
Phlebotomists		-1	-1	-1	-1	-1		-100.0%	-100.0%	-100.0%	-100.0%	-100.0%	-100.0%
Radiographers	6	-2	-2	-2	-1	-1	+0	-27.2%	-25.9%	-26.8%	-9.4%	-13.3%	+0.7%
Health Science/ Diagnostics	26	-19	-19	-23	+1	-0	+1	-42.7%	-42.4%	-47.1%	+5.1%	-0.7%	+3.5%
Social Care	2,799	+856	+605	+451	+308	+201	+7	+44.1%	+27.6%	+19.2%	+12.4%	+7.8%	+0.3%
Social Workers	331	+68	+29	+27	+17	+14	+3	+25.7%	+9.7%	+8.9%	+5.5%	+4.5%	+1.0%
Psychologists	234	+42	+23	+10	+27	+28	+3	+21.6%	+11.1%	+4.5%	+12.9%	+13.3%	+1.5%
Pharmacy	24	+3	+3	+3	+1	+2	+1	+15.0%	+16.7%	+12.5%	+3.4%	+9.5%	+3.8%
Counsellor Therapists	21	+4	+4	+1	+3	+2	+1	+24.6%	+23.2%	+6.7%	+16.8%	+9.7%	+5.0%
HSCP Trainees/ Students		-3	-2	-1				-100.0%	-100.0%	-100.0%	-100.0%	-100.0%	-100.0%
Other Health & Social Care	45	-18	-15	-15	-8	-6	-1	-29.0%	-24.9%	-25.5%	-15.9%	-12.0%	-1.8%
Play Therapists/ Specialists	12	-2	-3	-2	-3	-4	+0	-15.8%	-19.6%	-13.5%	-21.3%	-25.5%	+3.2%
H&SC, Other	78	-20	-16	-16	-9	-8	+1	-20.1%	-17.3%	-17.5%	-10.2%	-9.8%	+0.7%
Health & Social Care Professionals	4,610	+1,200	+761	+568	+462	+302	+44	+35.2%	+19.8%	+14.0%	+11.1%	+7.0%	+1.0%
Executive Management	52	+18	+16	+6	+11	+10	+2	+54.0%	+45.4%	+14.0%	+25.3%	+22.7%	+3.1%
Senior Management (VIII & GM)	237	+71	+60	+60	+44	+26	+6	+42.5%	+33.5%	+33.6%	+23.0%	+12.3%	+2.4%
Management (VIII & above)	290	+89	+76	+66	+55	+36	+7	+44.5%	+35.5%	+29.6%	+23.4%	+14.0%	+2.5%
Middle Management (V-VII)	711	+261	+215	+191	+142	+83	+24	+58.1%	+43.4%	+36.8%	+24.9%	+13.3%	+3.5%
Other Administrative	15	-1		-2	-2	-1	-1	-8.8%		-12.6%	-11.9%	-7.1%	-6.3%
Administrative/ Supervisory (V to VII)	726	+260	+215	+189	+140	+82	+23	+55.7%	+42.2%	+35.2%	+23.8%	+12.8%	+3.3%
Clerical (III & IV)	1,268	+224	+178	+127	+50	+37	-4	+21.5%	+16.3%	+11.1%	+4.1%	+3.0%	-0.4%
Management & Administrative	2,284	+573	+469	+382	+245	+154	+26	+33.5%	+25.8%	+20.1%	+12.0%	+7.2%	+1.2%
Catering	310	-18	-16	-8	-10	-9	-3	-5.4%	-5.1%	-2.4%	-3.1%	-3.0%	-0.9%
Household Services	873	-258	-198	-138	-97	-39	-12	-22.8%	-18.5%	-13.7%	-10.0%	-4.3%	-1.3%
Other Labs & Associated	1	-0	-0		-0			-16.7%	-6.5%		-3.8%		
Other Support	166	-87	-68	-67	-63	-56	+1	-34.3%	-29.2%	-28.8%	-27.7%	-25.4%	+0.5%
Portering	97	-16	-15	-14	-9	-12	-4	-14.0%	-13.4%	-12.4%	-8.2%	-11.4%	-4.3%
Support	1,446	-378	-298	-227	-179	-117	-18	-20.7%	-17.1%	-13.6%	-11.0%	-7.5%	-1.2%
Maintenance	208	-25	-20	-25	-14	-6	-8	-10.9%	-8.8%	-10.6%	-6.4%	-3.0%	-3.7%
Technical Services	15	+10	+10	+10	+9	+7	+4	+196.1%	+196.1%	+196.1%	+147.5%	+86.4%	+36.0%

Feb 2021 (Dec 2015 figure: 28,322)	WTE Feb 2021	WTE change since Dec 15	WTE change since Dec 16	WTE change since Dec 17	WTE change since Dec 18	WTE change since Dec 19	WTE change since Dec 20	% change since Dec 15	% change since Dec 16	% change since Dec 17	% change since Dec 18	% change since Dec 19	% change since Dec 20
Overall	32,302	+3,981	+3,066	+1,802	+1,178	+767	-57	+14.1%	+10.5%	+5.9%	+3.8%	+2.4%	-0.2%
Maintenance/ Technical	223	-15	-10	-15	-5	+1	-4	-6.5%	-4.3%	-6.2%	-2.2%	+0.3%	-1.7%
General Support	1,669	-393	-308	-241	-184	-117	-22	-19.1%	-15.6%	-12.6%	-9.9%	-6.5%	-1.3%
HCA (Student Nurse/Midwife COVID-19)	14	+14	+14	+14	+14	+14	-8	-100.0%	-100.0%	-100.0%	-100.0%	-100.0%	-35.7%
HCA, Nurse's Aide, etc.	11,132	+1,977	+1,332	+871	+471	+294	-28	+21.6%	+13.6%	+8.5%	+4.4%	+2.7%	-0.2%
Health & Social Care Assistants	39	+1	+2	+4	+4	+8	+1	+2.0%	+6.0%	+11.2%	+10.8%	+26.2%	+1.5%
Health Care Assistants	11,185	+1,992	+1,349	+889	+489	+316	-35	+21.7%	+13.7%	+8.6%	+4.6%	+2.9%	-0.3%
Home Help	3,381	+289	+491	-98	-152	-169	-144	+9.3%	+17.0%	-2.8%	-4.3%	-4.8%	-4.1%
Care, other	1,853	+317	+242	+178	+144	+72	+1	+20.6%	+15.0%	+10.6%	+8.4%	+4.0%	+0.1%
Patient & Client Care	16,420	+2,597	+2,081	+968	+481	+219	-178	+18.8%	+14.5%	+6.3%	+3.0%	+1.4%	-1.1%

Source: Health Service Personnel Census