

Social Care Services Employment Report: January 2021

Employment by Staff Group

Jan 2021 (Dec 2019 figure: 31,535)	WTE Dec 2020	WTE Jan 2021	WTE change since Dec 20	% change since Dec 20	WTE change since Dec 19	WTE change since Jan 20
Overall	32,359	32,352	-7	-0.0%	+817	+994
Consultants	29	28	-1	-4.1%	+0	-0
Registrars	17	20	+3	+15.9%	-3	-2
SHO/ Interns	23	21	-2	-9.0%	-1	-0
Medical/ Dental, other	118	102	-16	-13.8%	-9	-0
Medical & Dental	186	170	-17	-9.0%	-13	-3
Nurse/ Midwife Manager	1,643	1,643	-0	-0.0%	+40	+38
Nurse/ Midwife Specialist & AN/MP	102	104	+2	+1.9%	+16	+15
Staff Nurse/ Staff Midwife	5,217	5,230	+13	+0.3%	+81	+95
Public Health Nurse	20	20	+0	+0.1%	+1	+2
Pre-registration Nurse/ Midwife Intern	3	64.22	+62	+2468.8%	+36	-0
Pre-registration Nurse Intern (COVID-19)	32	11.62	-20	-63.4%	+12	+12
Post-registration Nurse/ Midwife Student				-100.0%	-1	-1
Nursing/ Midwifery awaiting registration	14	14.50	+0	+1.0%	-0	-3
Nursing/ Midwifery Student	49	90	+42	+85.7%	+46	+8
Nursing/ Midwifery other	28	28	-0	-0.6%	+4	+4
Nursing & Midwifery	7,060	7,116	+56	+0.8%	+189	+162
Therapy Professions	1,091	1,119	+28	+2.6%	+66	+62
Health Science/ Diagnostics	25	26	+1	+3.7%	-0	+2
Social Care	2,792	2,814	+22	+0.8%	+216	+222
Social Workers	328	331	+3	+0.8%	+13	+16
Psychologists	230	237	+7	+3.1%	+31	+28
Pharmacy	23	23	-0	-0.2%	+1	+0
H&SC, Other	77	76	-1	-1.8%	-10	-7
Health & Social Care Professionals	4,567	4,625	+59	+1.3%	+317	+323
Management (VIII & above)	283	272	-10	-3.6%	+18	+14
Administrative/ Supervisory (V to VII)	703	695	-7	-1.1%	+51	+49
Clerical (III & IV)	1,272	1,271	-1	-0.1%	+40	+33
Management & Administrative	2,258	2,239	-19	-0.8%	+110	+96
Support	1,464	1,452	-12	-0.8%	-112	-115
Maintenance/ Technical	227	224	-4	-1.6%	+1	+2
General Support	1,691	1,675	-16	-0.9%	-111	-114
Health Care Assistants	11,221	11,217	-3	-0.0%	+348	+438
Home Help	3,525	3,459	-66	-1.9%	-92	+7
Care, other	1,852	1,851	-2	-0.1%	+69	+86
Patient & Client Care	16,598	16,527	-71	-0.4%	+325	+530

Social Care Services Employment by Administration (HSE / S38): January 2021

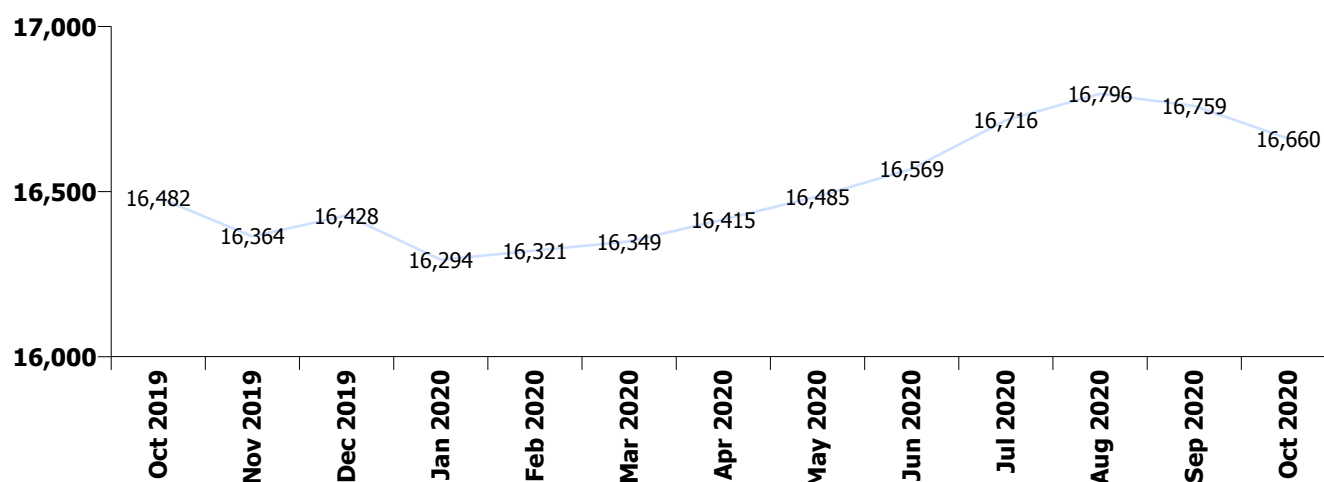
Jan 2021 (Dec 2019 figure: 31,535)	WTE Dec 2020	WTE Jan 2021	WTE change since Dec 20	% change since Dec 20	WTE change since Dec 19	WTE change since Jan 20
Overall	32,359	32,352	-7	-0.0%	+817	+994
HSE	16,758	16,743	-15	-0.1%	+316	+450
Section 38	15,601	15,609	+7	+0.0%	+501	+544

HSE

Jan 2021 (Dec 2019 figure: 16,428)	WTE Dec 2020	WTE Jan 2021	WTE change since Dec 20	% change since Dec 20	WTE change since Dec 19	WTE change since Jan 20
Overall	16,758	16,743	-15	-0.1%	+316	+450
Consultants	11	10.96	-0	-3.2%	+0	-0
Registrars	7	8.71	+2	+27.3%	-1	+1
SHO/ Interns	12	9.79	-2	-16.1%	-0	-0
Medical/ Dental, other	108	91.73	-16	-15.1%	-9	-0
Medical & Dental	138	121	-17	-12.1%	-10	+0
Nurse/ Midwife Manager	958	959.95	+2	+0.2%	+46	+46
Nurse/ Midwife Specialist & AN/MP	53	55.63	+3	+5.1%	+15	+14
Staff Nurse/ Staff Midwife	3,211	3,220.10	+10	+0.3%	+28	+37
Public Health Nurse	20	20.35	+0	+0.1%	+1	+2
Pre-registration Nurse/ Midwife Intern	3	11.74	+9	+369.6%	+8	-6
Pre-registration Nurse Intern (COVID-19)	9	11.00	+2	+28.4%	+11	+11
Post-registration Nurse/ Midwife Student				-100.0%	-1	-1
Nursing/ Midwifery awaiting registration	14	14.50	+0	+1.0%	-0	-3
Nursing/ Midwifery Student	25	37.24	+12	+46.5%	+18	+1
Nursing/ Midwifery other	11	10.88	+0	+1.8%	+2	+2
Nursing & Midwifery	4,278	4,304	+26	+0.6%	+111	+103
Therapy Professions	596	613.98	+18	+3.0%	+52	+56
Health Science/ Diagnostics	8	8.02	-0	-0.7%	+1	+2
Social Care	103	106.04	+3	+2.5%	+14	+12
Social Workers	151	154.10	+3	+2.2%	+12	+12
Psychologists	83	90.55	+7	+8.9%	+13	+14
Pharmacy	12	12.42	+1	+5.3%	+2	+1
H&SC, Other	27	27.04	+0	+1.4%	-1	+1
Health & Social Care Professionals	980	1,012	+32	+3.3%	+93	+98
Management (VIII & above)	133	132.78	+0	+0.1%	+15	+12
Administrative/ Supervisory (V to VII)	326	332.08	+6	+1.9%	+45	+44
Clerical (III & IV)	755	771.47	+16	+2.2%	+49	+44
Management & Administrative	1,214	1,236	+23	+1.9%	+110	+99
Support	782	781.14	-1	-0.1%	-34	-27
Maintenance/ Technical	110	110.72	+1	+0.7%	+1	+1
General Support	892	892	+0	+0.0%	-32	-26
Health Care Assistants	5,449	5,435.56	-14	-0.3%	+98	+126
Home Help	3,525	3,458.62	-66	-1.9%	-92	+7
Care, other	282	283.30	+1	+0.3%	+38	+44
Patient & Client Care	9,257	9,177	-79	-0.9%	+43	+176

Section 38

Jan 2021 (Dec 2019 figure: 15,107)	WTE Dec 2020	WTE Jan 2021	WTE change since Dec 20	% change since Dec 20	WTE change since Dec 19	WTE change since Jan 20
Overall	15,601	15,609	+7	+0.0%	+501	+544
Consultants	18	16.69	-1	-4.6%	-0	+0
Registrars	10	10.81	+1	+8.1%	-2	-3
SHO/ Interns	11	10.83	-0	-1.5%	-1	-0
Medical/ Dental, other	10	10.09				
Medical & Dental	49	48	-0	-0.3%	-4	-3
Nurse/ Midwife Manager	685	683.14	-2	-0.3%	-6	-9
Nurse/ Midwife Specialist & AN/MP	49	48.45	-1	-1.6%	+0	+1
Staff Nurse/ Staff Midwife	2,007	2,010.17	+4	+0.2%	+53	+58
Pre-registration Nurse/ Midwife Intern		52.48	+52	-100.0%	+27	+6
Pre-registration Nurse Intern (COVID-19)	23	0.62	-23	-97.3%	+1	+1
Nursing/ Midwifery Student	23	53.10	+30	+128.7%	+28	+7
Nursing/ Midwifery other	17	16.75	-0	-2.1%	+2	+2
Nursing & Midwifery	2,782	2,812	+30	+1.1%	+78	+59
Therapy Professions	495	504.89	+10	+2.1%	+14	+6
Health Science/ Diagnostics	17	18.00	+1	+5.9%	-1	
Social Care	2,689	2,707.46	+19	+0.7%	+201	+209
Social Workers	177	176.56	-1	-0.4%	+1	+5
Psychologists	147	146.82	-0	-0.2%	+18	+14
Pharmacy	11	10.75	-1	-5.9%	-1	-1
H&SC, Other	51	48.84	-2	-3.4%	-10	-8
Health & Social Care Professionals	3,587	3,613	+27	+0.7%	+224	+225
Management (VIII & above)	150	139.72	-10	-6.9%	+3	+2
Administrative/ Supervisory (V to VII)	377	363.19	-14	-3.6%	+6	+5
Clerical (III & IV)	517	499.91	-17	-3.4%	-9	-10
Management & Administrative	1,044	1,003	-41	-4.0%	-0	-3
General Support	799	783	-16	-2.0%	-78	-87
Patient & Client Care	7,341	7,349	+8	+0.1%	+282	+354



Social Care Services Employment by Care Group & Administration (HSE / S38): January 2021

Social Care

Jan 2021 (Dec 2019 figure: 31,535)	WTE Dec 2020	WTE Jan 2021	WTE change since Dec 20	% change since Dec 20	WTE change since Dec 19	WTE change since Jan 20
Overall	32,359	32,352	-7	-0.0%	+817	+994
HSE	4,085	4,115	+30	+0.7%	+212	+205
Section 38	14,860	14,866	+6	+0.0%	+466	+511
Disabilities	18,944	18,981	+37	+0.2%	+678	+717
HSE	12,673	12,628	-45	-0.4%	+103	+244
Section 38	742	743	+1	+0.2%	+35	+33
Older People	13,415	13,371	-44	-0.3%	+138	+277

Disabilities

Jan 2021 (Dec 2019 figure: 18,303)	WTE Dec 2020	WTE Jan 2021	WTE change since Dec 20	% change since Dec 20	WTE change since Dec 19	WTE change since Jan 20
Overall	18,944	18,981	+37	+0.2%	+678	+717
Consultants	24	24	-1	-3.3%	-0	-0
Registrars	8	9	+1	+12.6%	-4	-3
SHO/ Interns	9	8	-1	-7.0%	+1	+0
Medical/ Dental, other	14	14			-0	-0
Medical & Dental	56	55	-0	-0.8%	-3	-2
Nurse/ Midwife Manager	897	896	-1	-0.2%	+2	+5
Nurse/ Midwife Specialist & AN/MP	64	66	+2	+3.3%	+4	+5
Staff Nurse/ Staff Midwife	2,593	2,593	-0	-0.0%	+21	+30
Public Health Nurse	7	7	-0	-0.1%	+1	+1
Pre-registration Nurse/ Midwife Intern	3	64	+62	+2468.8%	+29	-0
Pre-registration Nurse Intern (COVID-19)	32	12	-20	-63.4%	+12	+12
Nursing/ Midwifery awaiting registration	13	13			+13	-3
Nursing/ Midwifery Student	47	89	+42	+87.9%	+47	+8
Nursing/ Midwifery other	24	24	-0	-0.8%	+1	+1
Nursing & Midwifery	3,632	3,674	+42	+1.2%	+76	+50
Therapy Professions	795	809	+14	+1.7%	+45	+39
Health Science/ Diagnostics	20	21	+1	+5.0%	+1	+2
Social Care	2,789	2,811	+22	+0.8%	+216	+222
Social Workers	228	228	+0	+0.1%	+10	+11
Psychologists	229	236	+7	+3.0%	+32	+29
Pharmacy	6	6	-0	-5.1%	-1	-1
H&SC, Other	76	74	-1	-1.8%	-11	-8
Health & Social Care Professionals	4,144	4,185	+42	+1.0%	+291	+294
Management (VIII & above)	204	193	-11	-5.2%	+14	+10
Administrative/ Supervisory (V to VII)	527	511	-16	-2.9%	+32	+28
Clerical (III & IV)	685	674	-12	-1.7%	+13	+7
Management & Administrative	1,416	1,378	-38	-2.7%	+60	+45
Support	663	653	-10	-1.5%	-82	-88
Maintenance/ Technical	132	130	-3	-2.0%	+6	+7
General Support	795	782	-13	-1.6%	-76	-81
Health Care Assistants	7,102	7,108	+5	+0.1%	+281	+342
Home Help	94	95	+1	+1.0%	-14	-11
Care, other	1,706	1,703	-2	-0.1%	+64	+79
Patient & Client Care	8,902	8,906	+4	+0.0%	+331	+410

Older People

Jan 2021 (Dec 2019 figure: 13,233)	WTE Dec 2020	WTE Jan 2021	WTE change since Dec 20	% change since Dec 20	WTE change since Dec 19	WTE change since Jan 20
Overall	13,415	13,371	-44	-0.3%	+138	+277
Consultants	4	4	-0	-8.1%	+0	-0
Registrars	9	11	+2	+18.9%	+1	+1
SHO/ Interns	14	12	-1	-10.4%	-3	-1
Medical/ Dental, other	104	88	-16	-15.7%	-9	-0
Medical & Dental	131	114	-16	-12.5%	-10	-0
Nurse/ Midwife Manager	746	747	+1	+0.1%	+38	+32
Nurse/ Midwife Specialist & AN/MP	38	38	-0	-0.5%	+12	+10
Staff Nurse/ Staff Midwife	2,624	2,637	+13	+0.5%	+61	+65
Public Health Nurse	13	13	+0	+0.2%	+0	+1
<i>Post-registration Nurse/ Midwife Student</i>				-100.0%		-1
<i>Nursing/ Midwifery awaiting registration</i>	1	2	+0	+11.1%	+2	+1
Nursing/ Midwifery Student	1	2	+0	+11.1%	-1	-1
Nursing/ Midwifery other	4	4	+0	+0.5%	+3	+3
Nursing & Midwifery	3,427	3,442	+14	+0.4%	+113	+111
Therapy Professions	295	310	+14	+4.8%	+21	+23
Health Science/ Diagnostics	5	5	-0	-1.2%	-1	-0
Social Care	3	3	+0	+0.0%	+0	-0
Social Workers	100	102	+2	+2.5%	+4	+6
Psychologists	1	1	+0	+13.6%	-1	-1
Pharmacy	17	17	+0	+1.6%	+2	+2
H&SC, Other	2	2			+0	+0
Health & Social Care Professionals	423	440	+17	+4.0%	+26	+29
Management (VIII & above)	79	79	+0	+0.5%	+5	+4
Administrative/ Supervisory (V to VII)	176	184	+8	+4.6%	+19	+20
Clerical (III & IV)	587	598	+11	+1.8%	+27	+26
Management & Administrative	842	861	+19	+2.2%	+50	+50
Support	801	799	-2	-0.3%	-30	-27
Maintenance/ Technical	95	94	-1	-1.0%	-5	-6
General Support	896	893	-3	-0.3%	-35	-33
Health Care Assistants	4,118	4,110	-8	-0.2%	+67	+96
Home Help	3,431	3,364	-67	-2.0%	-78	+17
Care, other	147	147	+1	+0.4%	+5	+7
Patient & Client Care	7,696	7,621	-75	-1.0%	-6	+120

Social Care Services Employment by CHO etc. Jan 2021

CHO 1

Jan 2021 (Dec 2019 figure: 3,334)	WTE Dec 2020	WTE Jan 2021	WTE change since Dec 20	% change since Dec 20	WTE change since Dec 19	WTE change since Jan 20
Overall	3,464	3,430	-34	-1.0%	+96	+110
Consultants				-100.0%		
Medical/ Dental, other	35	20	-15	-43.4%	-13	-5
Medical & Dental	35	20	-15	-43.4%	-13	-5
Nurse/ Midwife Manager	194	193	-1	-0.7%	-3	+0
Nurse/ Midwife Specialist & AN/MP	18	19	+1	+5.7%	+5	+4
Staff Nurse/ Staff Midwife	643	651	+8	+1.2%	+20	+24
Pre-registration Nurse/ Midwife Intern		4	+4	-100.0%	-7	-9
Pre-registration Nurse Intern (COVID-19)	6	5	-1	-15.6%	+5	+5
Nursing/ Midwifery awaiting registration	11	11			+11	
Nursing/ Midwifery Student	17	20	+3	+17.1%	+6	-3
Nursing/ Midwifery other	5	5			+0	+0
Nursing & Midwifery	877	888	+11	+1.2%	+28	+25
Therapy Professions	56	56	-0	-0.8%	+2	+3
Health Science/ Diagnostics	2	2	-0	-1.3%	+0	+0
Social Care	11	11	+0	+1.4%	+4	+4
Social Workers	34	35	+1	+3.3%	+2	+1
Psychologists	7	11	+4	+53.4%	+7	+7
H&SC, Other	10	10	+0	+3.0%	-2	-2
Health & Social Care Professionals	120	125	+5	+4.2%	+12	+12
Management (VIII & above)	25	24	-0	-1.1%	+2	+1
Administrative/ Supervisory (V to VII)	49	51	+2	+4.0%	+10	+10
Clerical (III & IV)	141	139	-1	-1.0%	+4	+3
Management & Administrative	215	215	+0	+0.2%	+16	+15
Support	168	170	+2	+1.5%	-2	-2
Maintenance/ Technical	13	12	-1	-7.7%	-1	-1
General Support	181	182	+1	+0.8%	-3	-3
Health Care Assistants	1,355	1,355	+0	+0.0%	+31	+32
Home Help	618	584	-35	-5.6%	+27	+34
Care, other	63	61	-2	-2.7%	-3	-1
Patient & Client Care	2,037	2,000	-36	-1.8%	+55	+65

CHO 2

Jan 2021 (Dec 2019 figure: 3,103)	WTE Dec 2020	WTE Jan 2021	WTE change since Dec 20	% change since Dec 20	WTE change since Dec 19	WTE change since Jan 20
Overall	3,105	3,076	-29	-0.9%	-26	+54
Consultants	3	3				
Registrars	2	2				-1
Medical/ Dental, other	12	12			-1	
Medical & Dental	17	17			-1	-1
Nurse/ Midwife Manager	144	144	-0	-0.0%	+9	+5
Nurse/ Midwife Specialist & AN/MP	8	8	+0	+1.8%	-0	+0
Staff Nurse/ Staff Midwife	474	469	-5	-1.0%	+3	-0
Public Health Nurse	1	1			+0	+0
<i>Pre-registration Nurse Intern (COVID-19)</i>	1	1	-0	-7.5%	+1	+1
Nursing/ Midwifery Student	1	1	-0	-7.5%	+1	+1
Nursing & Midwifery	628	623	-5	-0.7%	+12	+6
Therapy Professions	59	62	+3	+5.4%	-4	-5
Health Science/ Diagnostics	1	1				
Social Care	243	247	+4	+1.7%	+26	+26
Social Workers	36	36	-1	-1.4%	-1	-0
Psychologists	14	15	+1	+8.4%	-0	-0
Pharmacy	1	1			+0	+0
H&SC, Other	12	9	-2	-19.3%	-6	-6
Health & Social Care Professionals	366	372	+6	+1.6%	+14	+15
Management (VIII & above)	18	18	+0	+0.3%	-0	+1
Administrative/ Supervisory (V to VII)	54	54	+0	+0.8%	+6	+5
Clerical (III & IV)	116	115	-1	-1.1%	-7	-6
Management & Administrative	187	187	-1	-0.4%	-1	-0
Support	99	95	-4	-3.8%	-5	-6
Maintenance/ Technical	32	32	-0	-0.2%	+0	-0
General Support	132	128	-4	-2.9%	-5	-6
Health Care Assistants	1,151	1,139	-12	-1.1%	+0	+23
Home Help	456	445	-12	-2.5%	-55	+9
Care, other	168	167	-2	-1.0%	+8	+9
Patient & Client Care	1,775	1,750	-25	-1.4%	-46	+41

CHO 3

Jan 2021 (Dec 2019 figure: 2,798)	WTE Dec 2020	WTE Jan 2021	WTE change since Dec 20	% change since Dec 20	WTE change since Dec 19	WTE change since Jan 20
Overall	2,976	2,980	+4	+0.1%	+182	+197
Consultants	3	2	-1	-27.7%	+0	+0
Medical/ Dental, other	7	7			+1	+1
Medical & Dental	10	9	-1	-8.2%	+1	+1
Nurse/ Midwife Manager	139	140	+1	+1.0%	+1	+0
Nurse/ Midwife Specialist & AN/MP	14	13	-1	-6.5%	-1	-0
Staff Nurse/ Staff Midwife	502	504	+2	+0.4%	+18	+16
Public Health Nurse	1	1			+1	
Public Health Nurse	1	1				
Pre-registration Nurse/ Midwife Intern		8	+8	-100.0%	+1	-4
Pre-registration Nurse Intern (COVID-19)	2		-2	-100.0%		
Nursing/ Midwifery Student	2	8	+7	+433.3%	-4	-4
Nursing/ Midwifery other	4	4				
Nursing & Midwifery	661	670	+9	+1.4%	+14	+13
Therapy Professions	113	113	+0	+0.2%	+12	+11
Health Science/ Diagnostics	3	3	-0	-1.5%	+2	+2
Social Care	284	273	-11	-4.0%	+32	+34
Social Workers	23	24	+0	+0.9%	+0	+0
Psychologists	20	21	+0	+1.2%	+5	+2
Pharmacy	1	1				
H&SC, Other	11	12	+1	+8.6%	+0	+0
Health & Social Care Professionals	456	446	-10	-2.1%	+50	+50
Management (VIII & above)	14	14			+1	+1
Administrative/ Supervisory (V to VII)	61	62	+0	+0.3%	+0	+2
Clerical (III & IV)	107	111	+4	+3.5%	+2	+4
Management & Administrative	182	186	+4	+2.2%	+4	+8
Support	116	114	-2	-1.7%	-3	-6
Maintenance/ Technical	40	41	+1	+2.4%	+5	+5
General Support	157	156	-1	-0.6%	+2	-1
Health Care Assistants	1,101	1,108	+7	+0.6%	+64	+74
Home Help	216	215	-2	-0.9%	+39	+45
Care, other	193	191	-3	-1.4%	+8	+8
Patient & Client Care	1,511	1,513	+2	+0.2%	+111	+127

CHO 4

Jan 2021 (Dec 2019 figure: 5,358)	WTE Dec 2020	WTE Jan 2021	WTE change since Dec 20	% change since Dec 20	WTE change since Dec 19	WTE change since Jan 20
Overall	5,486	5,504	+18	+0.3%	+146	+163
Consultants	4	4			+1	
Registrars	3	3				
SHO/ Interns	1	1				
Medical/ Dental, other	23	23	-1	-3.5%	+2	+2
Medical & Dental	31	30	-1	-2.6%	+3	+2
Nurse/ Midwife Manager	213	216	+3	+1.4%	+9	+7
Nurse/ Midwife Specialist & AN/MP	20	20	-0	-1.5%	+3	+3
Staff Nurse/ Staff Midwife	840	846	+6	+0.7%	+22	+17
Public Health Nurse	6	6			+1	+2
Pre-registration Nurse/ Midwife Intern		8	+8	-100.0%	+0	+1
Pre-registration Nurse Intern (COVID-19)	8		-8	-100.0%		
Post-registration Nurse/ Midwife Student				-100.0%		-1
Nursing/ Midwifery awaiting registration	2	2			+2	+1
Nursing/ Midwifery Student	10	10	+1	+7.6%	+1	+1
Nursing/ Midwifery other				-100.0%	-1	-1
Nursing & Midwifery	1,089	1,098	+9	+0.8%	+36	+29
Therapy Professions	145	148	+3	+2.3%	-4	-5
Health Science/ Diagnostics	1	1			+0	+0
Social Care	240	244	+4	+1.6%	+16	+15
Social Workers	39	38	-2	-3.9%	+0	-0
Psychologists	36	36	+0	+0.0%	+1	+3
Pharmacy	4	4	-0	-2.1%	+1	+1
H&SC, Other	10	10	+0	+1.3%	+2	+2
Health & Social Care Professionals	476	482	+6	+1.2%	+17	+16
Management (VIII & above)	37	38	+1	+2.9%	+3	+4
Administrative/ Supervisory (V to VII)	78	75	-3	-3.4%	+5	+3
Clerical (III & IV)	221	226	+5	+2.3%	+13	+13
Management & Administrative	335	339	+3	+1.0%	+21	+20
Support	252	251	-1	-0.3%	+10	+12
Maintenance/ Technical	18	19	+1	+4.3%	+3	+3
General Support	271	271	+0	+0.0%	+13	+15
Health Care Assistants	1,852	1,881	+29	+1.6%	+105	+109
Home Help	1,067	1,040	-26	-2.5%	-73	-52
Care, other	366	364	-2	-0.6%	+26	+24
Patient & Client Care	3,285	3,285	+1	+0.0%	+58	+81

CHO 5

Jan 2021 (Dec 2019 figure: 3,152)	WTE Dec 2020	WTE Jan 2021	WTE change since Dec 20	% change since Dec 20	WTE change since Dec 19	WTE change since Jan 20
Overall	3,213	3,237	+24	+0.7%	+85	+94
Consultants	1	1			-0	-0
Medical/ Dental, other	15	15			+5	+5
Medical & Dental	16	16			+5	+5
Nurse/ Midwife Manager	158	157	-2	-1.0%	+9	+6
Nurse/ Midwife Specialist & AN/MP	6	8	+2	+31.4%	+4	+4
Staff Nurse/ Staff Midwife	476	477	+1	+0.2%	-7	-3
Public Health Nurse	9	9	+0	+0.1%	-1	-0
Pre-registration Nurse/ Midwife Intern		8	+8	-100.0%	+8	+3
Pre-registration Nurse Intern (COVID-19)	1	1			+1	+1
Nursing/ Midwifery awaiting registration				-100.0%		-5
Nursing/ Midwifery Student	1	9	+8	+774.0%	+7	-1
Nursing & Midwifery	650	660	+9	+1.4%	+12	+5
Therapy Professions	97	102	+4	+4.3%	-2	-2
Social Care	143	143	+0	+0.2%	-11	-9
Social Workers	28	28	-0	-0.4%	+4	+5
Psychologists	19	20	+1	+6.0%	+6	+6
Pharmacy	1	1	+0	+3.1%	+1	+1
Pharmacy	1	1	+0	+3.1%	+1	+1
H&SC, Other	5	5			-2	-2
Health & Social Care Professionals	294	300	+5	+1.9%	-3	-1
Management (VIII & above)	17	17	-0	-0.1%	+2	+1
Administrative/ Supervisory (V to VII)	58	62	+4	+7.1%	+9	+8
Clerical (III & IV)	93	97	+4	+4.8%	+5	+6
Management & Administrative	167	176	+9	+5.1%	+15	+15
Support	95	94	-1	-1.4%	-45	-43
Maintenance/ Technical	11	10	-1	-8.5%	-5	-5
General Support	107	104	-2	-2.2%	-50	-48
Health Care Assistants	1,180	1,166	-14	-1.2%	+104	+112
Home Help	638	652	+14	+2.2%	-9	-4
Care, other	162	165	+3	+2.1%	+11	+10
Patient & Client Care	1,980	1,983	+3	+0.2%	+106	+119

CHO 6

Jan 2021 (Dec 2019 figure: 2,021)	WTE Dec 2020	WTE Jan 2021	WTE change since Dec 20	% change since Dec 20	WTE change since Dec 19	WTE change since Jan 20
Overall	2,020	2,016	-5	-0.2%	-5	+2
Consultants	3	3				+0
Registrars	1	3	+2	+195.0%	+2	+2
Medical/ Dental, other	4	4	-0	-1.8%	-1	-1
Medical & Dental	8	10	+2	+24.0%	+1	+1
Nurse/ Midwife Manager	106	102	-4	-3.8%	-10	-10
Nurse/ Midwife Specialist & AN/MP	1	1				
Staff Nurse/ Staff Midwife	348	350	+2	+0.5%	-1	-0
Nursing & Midwifery	455	453	-2	-0.5%	-11	-10
Therapy Professions	89	92	+3	+3.7%	+1	+3
Social Care	361	379	+18	+4.9%	+44	+43
Social Workers	20	21	+1	+3.6%	-1	+1
Psychologists	15	14	-1	-6.8%	-2	-4
Pharmacy	3	3	-0	-12.4%	-0	-0
H&SC, Other	1	1	-0	-18.8%	-1	+0
Health & Social Care Professionals	489	509	+20	+4.1%	+40	+43
Management (VIII & above)	35	24	-12	-32.9%	-11	-11
Administrative/ Supervisory (V to VII)	73	56	-17	-23.6%	-19	-21
Clerical (III & IV)	89	81	-7	-8.3%	-2	-6
Management & Administrative	197	161	-36	-18.4%	-33	-39
Support	128	124	-4	-2.7%	-7	-16
Maintenance/ Technical	14	13	-1	-7.1%	-2	-2
General Support	142	137	-5	-3.2%	-8	-18
Health Care Assistants	479	492	+12	+2.6%	+5	+14
Care, other	250	254	+4	+1.6%	+1	+11
Patient & Client Care	730	746	+16	+2.2%	+6	+25

CHO 7

Jan 2021 (Dec 2019 figure: 3,978)	WTE Dec 2020	WTE Jan 2021	WTE change since Dec 20	% change since Dec 20	WTE change since Dec 19	WTE change since Jan 20
Overall	4,125	4,124	-1	-0.0%	+146	+161
Consultants	1	1				
Registrars	3	3	-0	-6.3%	-0	-1
SHO/ Interns	9	9	-0	-1.9%	-0	-0
Medical/ Dental, other	3	3			-2	-2
Medical & Dental	16	15	-0	-2.3%	-2	-3
Nurse/ Midwife Manager	204	207	+2	+1.2%	+8	+11
Nurse/ Midwife Specialist & AN/MP	7	7	+0	+0.3%	-1	-1
Staff Nurse/ Staff Midwife	620	625	+5	+0.8%	+31	+35
<i>Pre-registration Nurse/ Midwife Intern</i>		7	+7	-100.0%	+7	
<i>Nursing/ Midwifery awaiting registration</i>	1	2	+0	+11.1%	+2	+2
Nursing/ Midwifery Student	1	9	+7	+529.6%	+9	+2
Nursing/ Midwifery other	2	2			+1	+1
Nursing & Midwifery	834	849	+14	+1.7%	+48	+48
Therapy Professions	152	155	+3	+2.2%	+20	+19
Health Science/ Diagnostics	3	3				
Social Care	389	386	-3	-0.8%	+25	+34
Social Workers	44	47	+2	+5.4%	+2	+2
Psychologists	32	31	-2	-4.8%	+3	+1
Pharmacy	6	6	-0	-5.1%	-2	-2
H&SC, Other	3	3				
Health & Social Care Professionals	628	629	+1	+0.1%	+48	+54
Management (VIII & above)	50	51	+1	+1.5%	+14	+11
Administrative/ Supervisory (V to VII)	106	106	-0	-0.1%	+16	+17
Clerical (III & IV)	138	139	+1	+0.4%	+13	+7
Management & Administrative	294	295	+1	+0.4%	+42	+36
Support	274	270	-4	-1.3%	-6	-3
Maintenance/ Technical	35	33	-1	-3.9%	+3	+3
General Support	309	304	-5	-1.6%	-4	+0
Health Care Assistants	1,504	1,499	-5	-0.3%	-1	+16
Home Help	132	127	-4	-3.3%	+0	-7
Care, other	408	405	-3	-0.8%	+14	+16
Patient & Client Care	2,043	2,031	-12	-0.6%	+13	+26

CHO 8

Jan 2021 (Dec 2019 figure: 3,650)	WTE Dec 2020	WTE Jan 2021	WTE change since Dec 20	% change since Dec 20	WTE change since Dec 19	WTE change since Jan 20
Overall	3,689	3,716	+27	+0.7%	+66	+77
Consultants	1	1				
Registrars	1	1			-1	
Medical/ Dental, other	12	12	-0	-0.4%		
Medical & Dental	14	14	-0	-0.4%	-1	
Nurse/ Midwife Manager	208	211	+3	+1.3%	+11	+12
Nurse/ Midwife Specialist & AN/MP	10	10	+0	+0.3%	+1	+1
Staff Nurse/ Staff Midwife	567	563	-4	-0.7%	-5	-2
Public Health Nurse	4	4	+0	+0.3%	+1	+1
Pre-registration Nurse/ Midwife Intern		12	+12	-100.0%	+12	+3
Pre-registration Nurse Intern (COVID-19)	4		-4	-100.0%		
Nursing/ Midwifery Student	4	12	+8	+212.0%	+12	+3
Nursing/ Midwifery other	9	8	-0	-4.0%	+3	+2
Nursing & Midwifery	802	809	+7	+0.9%	+23	+17
Therapy Professions	122	124	+2	+1.3%	+12	+14
Health Science/ Diagnostics	2	2				
Social Care	380	383	+3	+0.9%	+22	+23
Social Workers	29	29	+0	+0.2%	-1	-1
Psychologists	22	24	+1	+5.0%	-1	-1
Pharmacy	2	3	+1	+34.0%	+0	+0
H&SC, Other	6	6	-0	-4.2%	-1	-1
Health & Social Care Professionals	564	570	+6	+1.1%	+31	+35
Management (VIII & above)	20	21	+1	+3.0%	+7	+6
Administrative/ Supervisory (V to VII)	78	79	+1	+1.4%	+3	+2
Clerical (III & IV)	159	163	+4	+2.3%	+9	+7
Management & Administrative	257	263	+5	+2.1%	+18	+14
Support	67	67	+1	+1.2%	-5	-2
Maintenance/ Technical	38	38	+0	+0.1%	-2	-2
General Support	104	105	+1	+0.8%	-7	-4
Health Care Assistants	1,416	1,424	+8	+0.6%	+25	+32
Home Help	397	396	-1	-0.3%	-22	-19
Care, other	135	136	+1	+0.6%	+0	+2
Patient & Client Care	1,948	1,956	+8	+0.4%	+3	+15

CHO 9

Jan 2021 (Dec 2019 figure: 4,064)	WTE Dec 2020	WTE Jan 2021	WTE change since Dec 20	% change since Dec 20	WTE change since Dec 19	WTE change since Jan 20
Overall	4,199	4,186	-13	-0.3%	+123	+131
Consultants	14	13	-0	-2.6%	-1	-0
Registrars	7	8	+1	+13.5%	-4	-2
SHO/ Interns	13	11	-2	-14.8%	-1	-0
Medical/ Dental, other	7	7				
Medical & Dental	40	39	-1	-3.3%	-6	-2
Nurse/ Midwife Manager	277	274	-3	-1.1%	+7	+5
Nurse/ Midwife Specialist & AN/MP	18	18	+0	+0.2%	+4	+4
Staff Nurse/ Staff Midwife	747	745	-2	-0.2%	+1	+9
Public Health Nurse				-100.0%	-0	-0
Pre-registration Nurse/ Midwife Intern	3	17	+14	+568.8%	+8	+5
Pre-registration Nurse Intern (COVID-19)	11	5	-6	-57.3%	+5	+5
Nursing/ Midwifery Student	13	21	+8	+62.4%	+13	+10
Nursing/ Midwifery other	9	9	+0	+1.9%	+1	+1
Nursing & Midwifery	1,063	1,067	+4	+0.4%	+27	+29
Therapy Professions	257	267	+9	+3.6%	+31	+25
Health Science/ Diagnostics	14	15	+1	+7.1%	-1	
Social Care	741	747	+7	+0.9%	+57	+53
Social Workers	73	73	+0	+0.4%	+8	+8
Psychologists	64	66	+2	+3.0%	+13	+13
Pharmacy	6	6			+1	+1
H&SC, Other	19	19	-0	-0.1%	-0	+1
Health & Social Care Professionals	1,174	1,193	+19	+1.6%	+109	+100
Management (VIII & above)	50	49	-1	-1.7%	+3	+2
Administrative/ Supervisory (V to VII)	121	126	+5	+3.8%	+23	+21
Clerical (III & IV)	170	161	-9	-5.4%	-4	-1
Management & Administrative	342	336	-6	-1.6%	+22	+21
Support	265	265	-0	-0.2%	-49	-49
Maintenance/ Technical	25	24	-1	-3.9%	-0	+0
General Support	290	289	-1	-0.5%	-49	-49
Health Care Assistants	1,182	1,154	-29	-2.4%	+15	+25
Care, other	107	108	+1	+1.1%	+5	+7
Patient & Client Care	1,289	1,262	-27	-2.1%	+20	+32

other Community Services

Jan 2021 (Dec 2019 figure: 78)	WTE Dec 2020	WTE Jan 2021	WTE change since Dec 20	% change since Dec 20	WTE change since Dec 19	WTE change since Jan 20
Overall	81	82	+1	+1.4%	+4	+5
Health Science/ Diagnostics				-100.0%	-1	-1
Health & Social Care Professionals				-100.0%	-1	-1
Management (VIII & above)	18	18	+0	+0.4%	-2	-1
Administrative/ Supervisory (V to VII)	24	24	+0	+1.2%	-0	+0
Clerical (III & IV)	39	39	+1	+1.9%	+6	+6
Management & Administrative	81	82	+1	+1.4%	+5	+6
Health Care Assistants	0	0			+0	+0
Patient & Client Care	0	0			+0	+0

Social Care Services Employment by CHO & Admin : Jan 2021

Jan 2021 (Dec 2019 figure: 31,535)	WTE Dec 2020	WTE Jan 2021	WTE change since Dec 20	% change since Dec 20	WTE change since Dec 19	WTE change since Jan 20
Overall	32,359	32,352	-7	-0.0%	+817	+994
CHO 1	3,464	3,430	-34	-1.0%	+96	+110
Health Service Executive	1,808	1,795	-12	-0.7%	-19	+47
Bros. of Charity, West Region	1,298	1,281	-17	-1.3%	-7	+7
Section 38 Voluntary Agencies	1,298	1,281	-17	-1.3%	-7	+7
CHO 2	3,105	3,076	-29	-0.9%	-26	+54
Health Service Executive	1,174	1,187	+14	+1.2%	+91	+100
Bros. of Charity, Clare	372	374	+1	+0.4%	+25	+31
Bros. of Charity, Limerick	592	580	-12	-2.0%	+60	+59
Daughters of Charity, Limerick	549	550	+1	+0.2%	+7	+11
Daughters of Charity, Roscrea	289	289	-0	-0.1%	-1	-5
Section 38 Voluntary Agencies	1,802	1,793	-10	-0.5%	+91	+97
CHO 3	2,976	2,980	+4	+0.1%	+182	+197
Health Service Executive	3,243	3,235	-9	-0.3%	+23	+41
Bros. of Charity, Southern	776	785	+9	+1.2%	+45	+45
Cope Foundation	1,147	1,155	+8	+0.7%	+64	+62
St. John of God, Kerry	320	330	+10	+3.0%	+14	+15
Section 38 Voluntary Agencies	2,242	2,269	+27	+1.2%	+123	+121
CHO 4	5,486	5,504	+18	+0.3%	+146	+163
Health Service Executive	2,045	2,070	+25	+1.2%	+41	+44
Bros. of Charity, Waterford	668	666	-2	-0.3%	+36	+42
Carriglea Cairde Services	214	216	+2	+1.1%	+2	-3
St. Patrick's, Kilkenny	287	285	-1	-0.5%	+6	+11
Section 38 Voluntary Agencies	1,169	1,167	-1	-0.1%	+44	+50
CHO 5	3,213	3,237	+24	+0.7%	+85	+94
Health Service Executive	573	574	+1	+0.2%	-1	+6
Children's Sunshine Home	56	56	+0	+0.9%	-2	-1
Leopardstown Park Hospital	207	207	+0	+0.1%	-4	-6
Royal Hospital, Donnybrook, Dublin	268	269	+1	+0.4%	-3	-4
St. John of God (IDS)	468	423	-44	-9.5%	-33	-28
Sunbeam House Services	450	486	+37	+8.1%	+37	+35
Section 38 Voluntary Agencies	1,448	1,442	-6	-0.4%	-5	-4
CHO 6	2,020	2,016	-5	-0.2%	-5	+2
Health Service Executive	1,157	1,158	+1	+0.1%	+61	+59
Cheeverstown House	395	400	+6	+1.4%	+4	+4
Kare, Newbridge, Co Kildare	377	376	-1	-0.2%	+17	+14
Peamount Hospital (Newcastle)	483	482	-1	-0.2%	-5	-11
Stewart's Hospital, (Palmerstown)	914	916	+3	+0.3%	+65	+61
St. John of God Liffey Services	801	792	-9	-1.1%	+4	+35
Section 38 Voluntary Agencies	2,968	2,966	-3	-0.1%	+85	+102
CHO 7	4,125	4,124	-1	-0.0%	+146	+161
Health Service Executive	2,094	2,090	-5	-0.2%	-9	+1
Muiriosa Foundation, Laois/Offaly	320	331	+11	+3.4%	+30	+30
Muiriosa Foundation, Longford/Westmeath	284	285	+1	+0.2%	+15	+13

Jan 2021 (Dec 2019 figure: 31,535)	WTE Dec 2020	WTE Jan 2021	WTE change since Dec 20	% change since Dec 20	WTE change since Dec 19	WTE change since Jan 20
Overall	32,359	32,352	-7	-0.0%	+817	+994
Muiriosa Foundation, South Kildare	342	341	-1	-0.2%	+8	+4
St. John of God, Drumcar	648	670	+21	+3.3%	+23	+28
Section 38 Voluntary Agencies	1,595	1,627	+32	+2.0%	+75	+76
CHO 8	3,689	3,716	+27	+0.7%	+66	+77
Health Service Executive	1,120	1,122	+2	+0.2%	+27	+36
Central Remedial Clinic	296	299	+3	+1.0%	+20	+15
Daughters of Charity, Dublin	1,063	1,072	+8	+0.8%	+38	+36
Incorporated Orthopaedic Hospital	267	267			+41	+42
St. Michael's House, Dublin	1,453	1,427	-27	-1.8%	-4	+2
Section 38 Voluntary Agencies	3,079	3,064	-15	-0.5%	+95	+95
CHO 9	4,199	4,186	-13	-0.3%	+123	+131
other Community Services	81	82	+1	+1.4%	+4	+5

Disability Services Employment by CHO & Admin: Jan 2021

Jan 2021 (Dec 2019 figure: 18,303)	WTE Dec 2020	WTE Jan 2021	WTE change since Dec 20	% change since Dec 20	WTE change since Dec 19	WTE change since Jan 20
Overall	18,944	18,981	+37	+0.2%	+678	+717
CHO 1	1,547	1,559	+12	+0.8%	+61	+58
Health Service Executive	218	219	+1	+0.5%	+11	+11
Bros. of Charity, West Region	1,298	1,281	-17	-1.3%	-7	+7
Section 38 Voluntary Agencies	1,298	1,281	-17	-1.3%	-7	+7
CHO 2	1,516	1,500	-15	-1.0%	+3	+18
Health Service Executive	145	148	+3	+2.4%	+26	+27
Bros. of Charity, Clare	372	374	+1	+0.4%	+25	+31
Bros. of Charity, Limerick	592	580	-12	-2.0%	+60	+59
Daughters of Charity, Limerick	549	550	+1	+0.2%	+7	+11
Daughters of Charity, Roscrea	289	289	-0	-0.1%	-1	-5
Section 38 Voluntary Agencies	1,802	1,793	-10	-0.5%	+91	+97
CHO 3	1,947	1,941	-6	-0.3%	+118	+124
Health Service Executive	313	317	+4	+1.2%	+25	+20
Bros. of Charity, Southern	776	785	+9	+1.2%	+45	+45
Cope Foundation	1,147	1,155	+8	+0.7%	+64	+62
St. John of God, Kerry	320	330	+10	+3.0%	+14	+15
Section 38 Voluntary Agencies	2,242	2,269	+27	+1.2%	+123	+121
CHO 4	2,556	2,586	+31	+1.2%	+148	+142
Health Service Executive	394	399	+5	+1.2%	+17	+13
Bros. of Charity, Waterford	668	666	-2	-0.3%	+36	+42
Carriglea Cairde Services	214	216	+2	+1.1%	+2	-3
St. Patrick's, Kilkenny	287	285	-1	-0.5%	+6	+11
Section 38 Voluntary Agencies	1,169	1,167	-1	-0.1%	+44	+50
CHO 5	1,563	1,567	+4	+0.2%	+61	+63
Health Service Executive	243	244	+1	+0.2%	+10	+11
Children's Sunshine Home	56	56	+1	+0.9%	-2	-1
St. John of God (IDS)	468	423	-44	-9.5%	-33	-28
Sunbeam House Services	450	486	+37	+8.1%	+37	+35
Section 38 Voluntary Agencies	973	966	-7	-0.7%	+2	+5
CHO 6	1,217	1,210	-7	-0.5%	+12	+16
Health Service Executive	135	136	+1	+0.8%	+36	+32
Cheeverstown House	395	400	+6	+1.4%	+4	+4
Kare, Newbridge, Co Kildare	377	376	-1	-0.2%	+17	+14
Peamount Hospital (Newcastle)	483	482	-1	-0.2%	-5	-11
Stewart's Hospital, (Palmerstown)	914	916	+3	+0.3%	+65	+61
St. John of God Liffey Services	801	792	-9	-1.1%	+4	+35
Section 38 Voluntary Agencies	2,968	2,966	-3	-0.1%	+85	+102
CHO 7	3,103	3,102	-2	-0.0%	+120	+134
Health Service Executive	611	608	-3	-0.5%	-3	+3
Muiriosa Foundation, Laois/Offaly	320	331	+11	+3.4%	+30	+30
Muiriosa Foundation, Longford/Westmeath	284	285	+1	+0.2%	+15	+13
Muiriosa Foundation, South Kildare	342	341	-1	-0.2%	+8	+4
St. John of God, Drumcar	648	670	+21	+3.3%	+23	+28

Jan 2021 (Dec 2019 figure: 18,303)	WTE Dec 2020	WTE Jan 2021	WTE change since Dec 20	% change since Dec 20	WTE change since Dec 19	WTE change since Jan 20
Overall	18,944	18,981	+37	+0.2%	+678	+717
Section 38 Voluntary Agencies	1,595	1,627	+32	+2.0%	+75	+76
CHO 8	2,205	2,234	+29	+1.3%	+72	+79
Health Service Executive	472	479	+6	+1.3%	+28	+29
Central Remedial Clinic	296	299	+3	+1.0%	+20	+15
Daughters of Charity, Dublin	1,063	1,072	+8	+0.8%	+38	+36
St. Michael's House, Dublin	1,453	1,427	-27	-1.8%	-4	+2
Section 38 Voluntary Agencies	2,812	2,797	-15	-0.5%	+54	+53
CHO 9	3,285	3,276	-9	-0.3%	+82	+82
other Community Services	6	6			+1	+1

Older Persons Services Employment by CHO & Admin: Jan 2021

Jan 2021 (Dec 2019 figure: 13,232)	WTE Dec 2020	WTE Jan 2021	WTE change since Dec 20	% change since Dec 20	WTE change since Dec 19	WTE change since Jan 20
Overall	13,415	13,371	-44	-0.3%	+138	+277
CHO 1	1,918	1,871	-46	-2.4%	+36	+52
CHO 2	1,590	1,576	-14	-0.8%	-30	+36
CHO 3	1,029	1,039	+10	+1.0%	+65	+74
CHO 4	2,930	2,918	-13	-0.4%	-2	+21
CHO 5	1,650	1,671	+20	+1.2%	+24	+31
Health Service Executive	329	330	+1	+0.2%	-11	-5
Leopardstown Park Hospital	207	207	+0	+0.1%	-4	-6
Royal Hospital, Donnybrook, Dublin	268	269	+1	+0.4%	-3	-4
Section 38 Voluntary Agencies	475	476	+1	+0.3%	-7	-9
CHO 6	804	806	+2	+0.2%	-18	-14
CHO 7	1,021	1,022	+0	+0.0%	+26	+26
CHO 8	1,484	1,482	-2	-0.1%	-6	-2
Health Service Executive	647	644	-4	-0.6%	-1	+7
Incorporated Orthopaedic Hospital	267	267	-0	-0.0%	+41	+42
Section 38 Voluntary Agencies	267	267	+0	+0.0%	+41	+42
CHO 9	914	911	-4	-0.4%	+41	+50
other Community Services	75	76	+1	+1.5%	+3	+4

Social Care Services Employment by CHO etc. Jan 2021

Bros. of Charity, Clare

Jan 2021 (Dec 2019 figure: 348)	WTE Dec 2020	WTE Jan 2021	WTE change since Dec 20	% change since Dec 20	WTE change since Dec 19	WTE change since Jan 20
Overall	372	374	+1	+0.4%	+25	+31
Consultants	0	0	-0	-15.4%	+0	+0
Medical & Dental	0	0	-0	-15.4%	+0	+0
Nurse/ Midwife Manager				-100.0%		
Staff Nurse/ Staff Midwife	2	3	+1	+38.8%	+1	+1
<i>Pre-registration Nurse Intern (COVID-19)</i>	1		-1	-100.0%		
Nursing/ Midwifery Student	1		-1	-100.0%		
Nursing & Midwifery	3	3	-0	-8.1%	+1	+1
Social Care	85	86	+1	+0.6%	+3	+4
Social Workers	3	3	-0	-3.3%	-0	+0
Psychologists	3	3				
H&SC, Other	4	4			-0	-0
Health & Social Care Professionals	94	95	+0	+0.4%	+3	+4
Management (VIII & above)	1	1				
Administrative/ Supervisory (V to VII)	5	5	+0	+3.1%	+0	+0
Clerical (III & IV)	5	5	-1	-10.0%	+0	+0
Management & Administrative	11	11	-0	-3.2%	+0	+0
Health Care Assistants	232	232	-0	-0.1%	+20	+26
Care, other	31	33	+2	+5.5%	+1	+1
Patient & Client Care	264	265	+2	+0.6%	+21	+26

Jan 2021 (Dec 2019 figure: 520)	WTE Dec 2020	WTE Jan 2021	WTE change since Dec 20	% change since Dec 20	WTE change since Dec 19	WTE change since Jan 20
Overall	592	580	-12	-2.0%	+60	+59
Consultants	2	1	-1	-44.1%		-0
Medical & Dental	2	1	-1	-44.1%		-0
Nurse/ Midwife Manager	28	28	-0	-0.1%	+3	+4
Nurse/ Midwife Specialist & AN/MP	4	4			-1	
Staff Nurse/ Staff Midwife	98	94	-4	-4.1%	+10	+7
Nursing & Midwifery	130	126	-4	-3.1%	+12	+11
Therapy Professions	15	15	-0	-0.1%	+3	+3
Social Care	105	103	-2	-1.6%	+18	+19
Social Workers	5	5	+0	+0.6%	+0	+0
Psychologists	6	6				
H&SC, Other	1	2	+1	+151.7%	+1	+1
Health & Social Care Professionals	131	130	-1	-0.6%	+22	+23
Management (VIII & above)	2	2				
Administrative/ Supervisory (V to VII)	6	6	-0	-0.2%	+0	
Clerical (III & IV)	11	11			-2	-1
Management & Administrative	19	19	-0	-0.1%	-2	-1
Support	6	5	-1	-14.4%	-2	-2
Maintenance/ Technical	2	2			-0	
General Support	8	7	-1	-10.9%	-2	-2
Health Care Assistants	204	203	-1	-0.4%	+24	+21
Care, other	98	94	-5	-4.7%	+6	+7
Patient & Client Care	303	297	-6	-1.8%	+30	+28

Jan 2021 (Dec 2019 figure: 740)	WTE Dec 2020	WTE Jan 2021	WTE change since Dec 20	% change since Dec 20	WTE change since Dec 19	WTE change since Jan 20
Overall	776	785	+9	+1.2%	+45	+45
Nurse/ Midwife Manager	15	15	-0	-0.1%	-0	-2
Nurse/ Midwife Specialist & AN/MP	3	3				-0
Staff Nurse/ Staff Midwife	56	56	+0	+0.3%	-3	-4
Nursing & Midwifery	73	74	+0	+0.2%	-4	-5
Therapy Professions	46	46	+0	+1.1%	-1	-2
Social Care	123	126	+4	+2.9%	+2	+1
Social Workers	17	17	-1	-3.3%	-1	-1
Psychologists	21	21	+0	+0.4%	+1	+3
Health & Social Care Professionals	207	210	+4	+1.7%	+1	+1
Management (VIII & above)	8	8			+0	+0
Administrative/ Supervisory (V to VII)	10	10	+0	+0.1%	+1	-0
Clerical (III & IV)	35	35	-0	-0.4%	+2	+2
Management & Administrative	53	53	-0	-0.3%	+3	+2
Support	14	13	-1	-4.4%	-1	-1
Maintenance/ Technical	3	3	+0	+1.2%	+1	+1
General Support	16	16	-1	-3.5%	-0	+0
Health Care Assistants	222	231	+9	+4.2%	+25	+32
Care, other	204	201	-3	-1.4%	+20	+16
Patient & Client Care	426	433	+6	+1.5%	+45	+47

Jan 2021 (Dec 2019 figure: 630)	WTE Dec 2020	WTE Jan 2021	WTE change since Dec 20	% change since Dec 20	WTE change since Dec 19	WTE change since Jan 20
Overall	668	666	-2	-0.3%	+36	+42
Consultants	1	1			-0	-0
Medical & Dental	1	1			-0	-0
Nurse/ Midwife Manager	22	23	+1	+4.3%	-1	-1
Staff Nurse/ Staff Midwife	50	48	-2	-3.1%	+0	+1
<i>Pre-registration Nurse/ Midwife Intern</i>		6	+6	-100.0%	+6	+3
Nursing/ Midwifery Student		6	+6	-100.0%	+6	+3
Nursing & Midwifery	72	78	+5	+7.5%	+5	+2
Therapy Professions	1	2	+1	+100.0%	-1	-1
Social Care	70	70	-1	-0.9%	+3	+4
Social Workers	8	8			-2	-1
Psychologists	4	4			-0	-1
H&SC, Other	4	4			-0	-0
Health & Social Care Professionals	87	88	+0	+0.5%	+0	+1
Management (VIII & above)	5	5	-0	-2.0%		
Administrative/ Supervisory (V to VII)	16	16	+0	+2.3%	+4	+4
Clerical (III & IV)	27	26	-1	-2.7%	+1	+2
Management & Administrative	48	47	-0	-1.0%	+4	+5
Support	1	2	+0	+2.0%	-0	+0
Maintenance/ Technical	3	3				
General Support	4	4	+0	+0.7%	-0	+0
Health Care Assistants	362	353	-10	-2.6%	+22	+30
Care, other	94	96	+2	+2.3%	+5	+4
Patient & Client Care	456	448	-7	-1.6%	+26	+33

Carriglea Cairde Services

Jan 2021 (Dec 2019 figure: 214)	WTE Dec 2020	WTE Jan 2021	WTE change since Dec 20	% change since Dec 20	WTE change since Dec 19	WTE change since Jan 20
Overall	214	216	+2	+1.1%	+2	-3
Nurse/ Midwife Manager	13	13	+0	+0.5%	+1	+1
Staff Nurse/ Staff Midwife	27	26	-1	-2.8%	+0	-1
<i>Pre-registration Nurse/ Midwife Intern</i>				-100.0%		-2
Nursing/ Midwifery Student				-100.0%		-2
Nursing & Midwifery	40	39	-1	-1.7%	+1	-1
Social Care	30	31	+0	+1.2%	-6	-8
Health & Social Care Professionals	30	31	+0	+1.2%	-6	-8
Management (VIII & above)	2	2				
Administrative/ Supervisory (V to VII)	3	3			+0	+0
Clerical (III & IV)	6	6	+0	+0.3%	-0	-0
Management & Administrative	11	11	+0	+0.2%	-0	-0
Support	6	7	+0	+5.0%	+2	+2
Maintenance/ Technical	1	1				
General Support	8	8	+0	+4.1%	+2	+2
Health Care Assistants	80	82	+3	+3.3%	+9	+8
Care, other	45	44	-0	-0.9%	-4	-4
Patient & Client Care	125	127	+2	+1.8%	+4	+4

Central Remedial Clinic

Jan 2021 (Dec 2019 figure: 278)	WTE Dec 2020	WTE Jan 2021	WTE change since Dec 20	% change since Dec 20	WTE change since Dec 19	WTE change since Jan 20
Overall	296	299	+3	+1.0%	+20	+15
Consultants	1	1				
Medical/ Dental, other	0	0				
Medical & Dental	2	2				
Nurse/ Midwife Manager	2	2				
Nurse/ Midwife Specialist & AN/MP	2	2			+1	+1
Staff Nurse/ Staff Midwife	4	4	-1	-18.7%		
Nursing/ Midwifery other	1	1			+1	+1
Nursing & Midwifery	9	8	-1	-8.9%	+2	+2
Therapy Professions	78	79	+1	+1.5%	+2	-0
Health Science/ Diagnostics	13	14	+1	+7.7%	-1	
Social Workers	8	9	+1	+7.5%	+1	+1
Psychologists	13	13			+2	+2
Health & Social Care Professionals	112	115	+3	+2.5%	+4	+3
Management (VIII & above)	7	7				
Administrative/ Supervisory (V to VII)	15	14	-1	-6.5%	-1	-1
Clerical (III & IV)	34	34			+2	+2
Management & Administrative	57	56	-1	-1.8%	+1	+1
Support	12	12			-2	-3
Maintenance/ Technical	2	2			+1	+1
General Support	14	14			-1	-2
Health Care Assistants	58	59	+1	+1.6%	+8	+5
Care, other	44	45	+1	+2.5%	+7	+7
Patient & Client Care	102	104	+2	+2.0%	+15	+11

Jan 2021 (Dec 2019 figure: 396)	WTE Dec 2020	WTE Jan 2021	WTE change since Dec 20	% change since Dec 20	WTE change since Dec 19	WTE change since Jan 20
Overall	395	400	+6	+1.4%	+4	+4
Consultants	0	0				
Medical/ Dental, other	1	1				
Medical & Dental	1	1				
Nurse/ Midwife Manager	27	26	-1	-3.7%		
Nurse/ Midwife Specialist & AN/MP	2	2				
Staff Nurse/ Staff Midwife	106	111	+5	+4.7%	+4	+4
Nursing & Midwifery	134	138	+4	+3.0%	+4	+4
Therapy Professions	13	13			-0	+2
Social Care	35	35			-0	-1
Social Workers	4	5	+1	+25.0%	-1	-1
Psychologists	5	4	-1	-20.0%		
Pharmacy	0	0			-0	-0
H&SC, Other	2	2				
Health & Social Care Professionals	59	59			-1	+1
Management (VIII & above)	3	3			+1	+1
Administrative/ Supervisory (V to VII)	15	15	+0	+2.2%	+0	+0
Clerical (III & IV)	12	12			+1	+1
Management & Administrative	30	31	+0	+1.1%	+3	+3
Support	27	27	-0	-1.3%	-0	-0
Maintenance/ Technical	4	4				
General Support	30	30	-0	-1.1%	-0	-0
Health Care Assistants	129	129	-0	-0.1%	-1	-3
Care, other	11	12	+2	+16.7%	+0	+0
Patient & Client Care	139	141	+2	+1.1%	-1	-3

Children's Sunshine Home

Jan 2021 (Dec 2019 figure: 58)	WTE Dec 2020	WTE Jan 2021	WTE change since Dec 20	% change since Dec 20	WTE change since Dec 19	WTE change since Jan 20
Overall	56	56	+1	+0.9%	-2	-1
Nurse/ Midwife Manager	8	8			+1	+1
Staff Nurse/ Staff Midwife	18	18			-3	-2
Nursing & Midwifery	26	26			-2	-1
Therapy Professions	1	2	+1	+48.1%	-0	-0
Social Workers	1	1				
Health & Social Care Professionals	2	2	+1	+27.3%	-0	-0
Management (VIII & above)	2	2			-1	-1
Administrative/ Supervisory (V to VII)	4	4				
General Administrative (III & IV)	1	1			+1	
Clerical (III & IV)	1	1				
Management & Administrative	7	7			-1	-1
Support	3	3				
General Support	3	3				
Health Care Assistants	13	13			-1	-1
Care, other	5	5			+1	+2
Patient & Client Care	18	18			+1	+1

Jan 2021 (Dec 2019 figure: 1,091)	WTE Dec 2020	WTE Jan 2021	WTE change since Dec 20	% change since Dec 20	WTE change since Dec 19	WTE change since Jan 20
Overall	1,147	1,155	+8	+0.7%	+64	+62
Nurse/ Midwife Manager	42	42			+1	+1
Nurse/ Midwife Specialist & AN/MP	11	11			+1	+1
Staff Nurse/ Staff Midwife	177	180	+3	+1.6%	+10	+10
Pre-registration Nurse/ Midwife Intern		8	+8	-100.0%		+2
Pre-registration Nurse Intern (COVID-19)	8		-8	-100.0%		
Nursing/ Midwifery Student	8	8	+0	+6.0%	+2	+2
Nursing/ Midwifery other				-100.0%	-1	-1
Nursing & Midwifery	238	241	+3	+1.4%	+14	+14
Therapy Professions	37	37			-1	-1
Social Care	43	43			+11	+11
Social Workers	9	9				
Psychologists	11	11			+1	+1
H&SC, Other	3	3				
Health & Social Care Professionals	102	102			+12	+12
Management (VIII & above)	7	7			+1	+1
Administrative/ Supervisory (V to VII)	23	23			+4	+4
Clerical (III & IV)	26	26			+2	+2
Management & Administrative	55	55			+7	+7
Support	78	78			+1	+1
Maintenance/ Technical	7	7			+1	+1
General Support	85	85			+2	+2
Health Care Assistants	587	591	+5	+0.8%	+28	+26
Care, other	81	81			+1	+1
Patient & Client Care	667	672	+5	+0.7%	+29	+27

Daughters of Charity, Dublin

Jan 2021 (Dec 2019 figure: 1,034)	WTE Dec 2020	WTE Jan 2021	WTE change since Dec 20	% change since Dec 20	WTE change since Dec 19	WTE change since Jan 20
Overall	1,063	1,072	+8	+0.8%	+38	+36
Consultants	2	2			+1	+1
Medical/ Dental, other	2	2				
Medical & Dental	4	4			+1	+1
Nurse/ Midwife Manager	62	62			+0	-2
Nurse/ Midwife Specialist & AN/MP	10	10	+0	+1.9%	+2	+2
Staff Nurse/ Staff Midwife	188	188			+2	+5
Pre-registration Nurse/ Midwife Intern		10	+10	-100.0%	+3	+3
Pre-registration Nurse Intern (COVID-19)	10		-10	-100.0%		
Nursing/ Midwifery Student	10	10	+1	+5.3%	+3	+3
Nursing/ Midwifery other	4	4				
Nursing & Midwifery	274	275	+1	+0.3%	+7	+8
Therapy Professions	32	36	+4	+12.5%	+3	+3
Social Care	173	177	+4	+2.2%	+14	+13
Social Workers	13	13			+3	+3
Psychologists	11	12	+1	+9.0%	+5	+4
Pharmacy	2	2				
H&SC, Other	5	5			+1	+1
Health & Social Care Professionals	235	244	+9	+3.7%	+25	+23
Management (VIII & above)	9	9			+3	+2
Administrative/ Supervisory (V to VII)	27	27	-0	-0.4%	+2	+1
Clerical (III & IV)	32	31	-1	-2.1%	-2	-0
Management & Administrative	68	67	-1	-1.2%	+3	+3
Support	76	77	+1	+1.5%	-1	-2
Maintenance/ Technical	8	7	-1	-12.7%	-1	-1
General Support	84	84	+0	+0.2%	-2	-3
Health Care Assistants	366	366	-1	-0.2%	+4	+4
Care, other	31	32	+0	+1.0%	+0	+1
Patient & Client Care	398	398	-0	-0.1%	+4	+5

Daughters of Charity, Limerick

Jan 2021 (Dec 2019 figure: 543)	WTE Dec 2020	WTE Jan 2021	WTE change since Dec 20	% change since Dec 20	WTE change since Dec 19	WTE change since Jan 20
Overall	549	550	+1	+0.2%	+7	+11
Medical/ Dental, other	1	1				
Medical & Dental	1	1				
Nurse/ Midwife Manager	32	32			-3	-2
Nurse/ Midwife Specialist & AN/MP	6	5	-1	-15.7%	-2	-2
Staff Nurse/ Staff Midwife	152	153	+1	+0.4%	+9	+10
Pre-registration Nurse/ Midwife Intern		8	+8	-100.0%	+1	-4
Pre-registration Nurse (COVID-19)	1		-1	-100.0%		
Nursing/ Midwifery Student	1	8	+8	+1500.0%	-4	-4
Nursing/ Midwifery other	3	3				
Nursing & Midwifery	194	201	+7	+3.7%	+0	+2
Therapy Professions	16	15	-1	-6.3%		
Social Care	67	56	-11	-16.4%	+3	+2
Social Workers	5	5			-0	+0
Psychologists	7	7			+4	+2
H&SC, Other	6	6				
Health & Social Care Professionals	101	89	-12	-11.9%	+6	+4
Management (VIII & above)	2	2				
Administrative/ Supervisory (V to VII)	11	11			+1	
Clerical (III & IV)	14	13	-1	-3.6%	-2	-1
Management & Administrative	27	26	-1	-1.9%	-1	-1
Support	43	42	-1	-1.2%	+1	-1
Maintenance/ Technical	4	4				
General Support	47	47	-1	-1.1%	+1	-1
Health Care Assistants	156	163	+7	+4.4%	-2	+4
Care, other	23	23			+2	+2
Patient & Client Care	179	186	+7	+3.9%	-0	+6

Daughters of Charity, Roscrea

Jan 2021 (Dec 2019 figure: 290)	WTE Dec 2020	WTE Jan 2021	WTE change since Dec 20	% change since Dec 20	WTE change since Dec 19	WTE change since Jan 20
Overall	289	289	-0	-0.1%	-1	-5
Nurse/ Midwife Manager	15	14	-1	-6.9%	-2	-3
Staff Nurse/ Staff Midwife	19	19			+0	+0
Nursing/ Midwifery other	1	1				
Nursing & Midwifery	34	33	-1	-2.9%	-2	-3
Therapy Professions	2	2			+0	+0
Social Care	25	25			+6	+6
Social Workers	1	1				
Psychologists	1	1				
Health & Social Care Professionals	29	29			+7	+7
Management (VIII & above)	1	1				
Administrative/ Supervisory (V to VII)	8	7	-1	-12.7%		
Clerical (III & IV)	6	7	+1	+15.3%	+0	+0
Management & Administrative	15	15	-0	-0.3%	+0	+0
Support	4	4				
Maintenance/ Technical	5	5			-1	-1
General Support	9	9			-1	-1
Health Care Assistants	200	201	+1	+0.4%	-2	-4
Care, other	2	2			-4	-4
Patient & Client Care	202	202	+1	+0.4%	-6	-8

Jan 2021 (Dec 2019 figure: 226)	WTE Dec 2020	WTE Jan 2021	WTE change since Dec 20	% change since Dec 20	WTE change since Dec 19	WTE change since Jan 20
Overall	267	267			+41	+42
Consultants	2	2			+1	+0
Registrars	2	2				
SHO/ Interns	4	4			-1	
Medical & Dental	8	8				+0
Nurse/ Midwife Manager	18	18			+0	+0
Staff Nurse/ Staff Midwife	70	70			+10	+10
Nursing & Midwifery	88	88			+11	+11
Therapy Professions	34	34			+14	+11
Health Science/ Diagnostics	1	1				
Social Workers	9	9			+2	+2
Pharmacy	4	4			+1	+1
Health & Social Care Professionals	47	47			+16	+13
Management (VIII & above)	2	2			+1	+1
Administrative/ Supervisory (V to VII)	6	6				
Clerical (III & IV)	10	10				
Management & Administrative	18	18			+1	+1
Support	40	40			+6	+5
Maintenance/ Technical	2	2				
General Support	42	42			+6	+5
Health Care Assistants	64	64			+8	+12
Care, other	0	0				
Patient & Client Care	64	64			+8	+12

Kare, Newbridge, Co Kildare

Jan 2021 (Dec 2019 figure: 360)	WTE Dec 2020	WTE Jan 2021	WTE change since Dec 20	% change since Dec 20	WTE change since Dec 19	WTE change since Jan 20
Overall	377	376	-1	-0.2%	+17	+14
Nurse/ Midwife Manager	7	7			-5	-4
Staff Nurse/ Staff Midwife	25	24	-1	-4.4%	+2	+1
Nursing & Midwifery	33	31	-1	-3.4%	-3	-2
Therapy Professions	13	13	+0	+0.6%	-2	-3
Social Care	68	68	+0	+0.1%	+7	+8
Social Workers	4	4				-0
Psychologists	7	7	-0	-4.2%	+3	+2
Health & Social Care Professionals	92	92	-0	-0.2%	+8	+7
Management (VIII & above)	6	6				
Administrative/ Supervisory (V to VII)	13	13	+0	+1.7%	+1	+1
Clerical (III & IV)	14	13	-1	-7.0%	+2	+1
Management & Administrative	34	33	-1	-2.3%	+3	+3
Support	1	1	-0	-0.7%	-0	-0
General Support	1	1	-0	-0.7%	-0	-0
Health Care Assistants	106	108	+2	+2.1%	+7	+6
Care, other	112	111	-1	-0.7%	+2	+1
Patient & Client Care	218	219	+1	+0.7%	+9	+7

Leopardstown Park Hospital

Jan 2021 (Dec 2019 figure: 211)	WTE Dec 2020	WTE Jan 2021	WTE change since Dec 20	% change since Dec 20	WTE change since Dec 19	WTE change since Jan 20
Overall	207	207	+0	+0.1%	-4	-6
Medical/ Dental, other	1	1				
Medical & Dental	1	1				
Nurse/ Midwife Manager	14	12	-2	-15.0%	-4	-4
Staff Nurse/ Staff Midwife	42	41	-1	-3.4%	-2	-2
Nursing & Midwifery	56	52	-4	-6.3%	-5	-5
Therapy Professions	9	9			+2	+2
Social Workers	1	1				
Pharmacy	2	2	-0	-18.9%	-0	-0
Health & Social Care Professionals	12	12	-0	-3.0%	+2	+2
Management (VIII & above)	1	1				
Administrative/ Supervisory (V to VII)	7	7				
Clerical (III & IV)	12	12			+1	+2
Management & Administrative	20	20			+1	+2
Support	34	34	+1	+2.3%	+1	-1
Maintenance/ Technical	4	4				
General Support	38	38	+1	+2.0%	+1	-1
Health Care Assistants	77	80	+3	+4.2%	-1	-2
Care, other	3	3	+0	+1.4%	-2	-1
Patient & Client Care	80	83	+3	+4.1%	-3	-3

Muiriosa Foundation, Laois/Offaly

Jan 2021 (Dec 2019 figure: 302)	WTE Dec 2020	WTE Jan 2021	WTE change since Dec 20	% change since Dec 20	WTE change since Dec 19	WTE change since Jan 20
Overall	320	331	+11	+3.4%	+30	+30
Nurse/ Midwife Manager	17	17	+1	+3.4%	+2	+2
Staff Nurse/ Staff Midwife	28	29	+1	+2.3%	+3	+2
Nursing & Midwifery	45	46	+1	+2.7%	+5	+4
Social Care	105	107	+2	+2.2%	+13	+13
Social Workers	3	3	-0	-0.6%	-0	-1
Psychologists	1	1				
H&SC, Other	1	1				
Health & Social Care Professionals	110	112	+2	+2.1%	+12	+13
Management (VIII & above)	3	3			+2	+2
Administrative/ Supervisory (V to VII)	5	6	+1	+21.0%	+1	+1
Clerical (III & IV)	11	11	-0	-0.9%	+0	+1
Management & Administrative	19	20	+1	+4.8%	+3	+4
Support	1	1	-0	-2.3%	+0	+0
Maintenance/ Technical	2	2				
General Support	3	3	-0	-0.9%	+0	+0
Health Care Assistants	114	121	+6	+5.4%	+11	+11
Care, other	28	28	+0	+0.6%	-2	-2
Patient & Client Care	142	148	+6	+4.4%	+9	+9

Muiriosa Foundation, Longford/Westmeath

Jan 2021 (Dec 2019 figure: 270)	WTE Dec 2020	WTE Jan 2021	WTE change since Dec 20	% change since Dec 20	WTE change since Dec 19	WTE change since Jan 20
Overall	284	285	+1	+0.2%	+15	+13
Nurse/ Midwife Manager	9	9	-0	-2.8%	-1	-1
Staff Nurse/ Staff Midwife	5	4	-1	-11.1%	-1	-1
Nursing & Midwifery	14	13	-1	-5.7%	-2	-1
Therapy Professions	3	3				
Social Care	100	99	-1	-0.8%	+5	+4
Social Workers	4	4			+1	+1
Psychologists	2	2	+0	+1.6%		
H&SC, Other	2	2	-0	-11.9%	-1	-1
Health & Social Care Professionals	111	109	-1	-0.9%	+5	+4
Senior Management (VIII & GM)	1	1	+1	+100.0%	+1	+1
Management (VIII & above)	1	1	+1	+100.0%	+1	+1
Administrative/ Supervisory (V to VII)	4	4	-0	-1.3%	-0	-0
Clerical (III & IV)	10	10	+0	+0.3%	-0	-0
Management & Administrative	14	15	+0	+3.3%	+1	+1
Support	1	1				
Maintenance/ Technical	3	3				
General Support	4	4				
Health Care Assistants	126	128	+2	+1.4%	+13	+12
Care, other	16	16	+0	+0.7%	-2	-2
Patient & Client Care	141	143	+2	+1.3%	+11	+10

Jan 2021 (Dec 2019 figure: 334)	WTE Dec 2020	WTE Jan 2021	WTE change since Dec 20	% change since Dec 20	WTE change since Dec 19	WTE change since Jan 20
Overall	342	341	-1	-0.2%	+8	+4
Nurse/ Midwife Manager	14	14			-4	-4
Nurse/ Midwife Specialist & AN/MP	2	2	-0	-2.5%	+0	+0
Staff Nurse/ Staff Midwife	22	21	-2	-6.8%	-3	-3
<i>Pre-registration Nurse/ Midwife Intern</i>		1	+1	-100.0%	+1	+1
Nursing/ Midwifery Student		1	+1	-100.0%	+1	+1
Nursing/ Midwifery other	7	6	-0	-5.5%	+1	+0
Nursing & Midwifery	44	43	-1	-2.6%	-6	-6
Therapy Professions	8	8	-0	-0.7%	-0	-0
Social Care	94	94	-0	-0.0%	+5	+4
Social Workers	3	3			+0	+0
Psychologists	2	2			+0	+0
H&SC, Other	3	3				
Health & Social Care Professionals	110	109	-0	-0.1%	+5	+4
Management (VIII & above)	4	4			+1	+1
Administrative/ Supervisory (V to VII)	13	13	-0	-0.2%	-1	-1
Clerical (III & IV)	13	13	+0	+1.6%	-0	-1
Management & Administrative	29	30	+0	+0.6%	-0	-1
Support	14	14	+0	+1.2%	-2	-0
Maintenance/ Technical	4	4			-1	-1
General Support	18	18	+0	+0.9%	-3	-1
Health Care Assistants	133	133	+0	+0.1%	+10	+8
Care, other	9	9	+0	+0.3%	+1	+0
Patient & Client Care	141	141	+0	+0.1%	+11	+8

Peamount Hospital (Newcastle)

Jan 2021 (Dec 2019 figure: 486)	WTE Dec 2020	WTE Jan 2021	WTE change since Dec 20	% change since Dec 20	WTE change since Dec 19	WTE change since Jan 20
Overall	483	482	-1	-0.2%	-5	-11
Registrars	2	2	-0	-12.5%	-0	-0
SHO/ Interns	7	7	-0	-2.4%	-0	-0
Medical & Dental	9	9	-0	-4.7%	-0	-1
Nurse/ Midwife Manager	28	29	+2	+5.8%	+3	+3
Nurse/ Midwife Specialist & AN/MP	2	2				
Staff Nurse/ Staff Midwife	75	74	-1	-1.9%	-8	-8
Nursing/ Midwifery other	1	1			+1	+1
Nursing & Midwifery	106	106	+0	+0.2%	-4	-4
Therapy Professions	29	32	+4	+12.5%	+3	+0
Health Science/ Diagnostics	3	3				
Social Care	4	3	-1	-23.0%	+2	+2
Social Workers	5	5	+0	+4.6%	+0	+0
Pharmacy	4	3	-0	-8.5%	-1	-1
Health & Social Care Professionals	44	47	+3	+5.7%	+4	+1
Management (VIII & above)	4	4				
Administrative/ Supervisory (V to VII)	17	16	-1	-3.9%	+2	+2
Clerical (III & IV)	19	18	-1	-5.8%	-2	-2
Management & Administrative	40	39	-2	-4.4%	+1	
Support	44	44	-0	-0.2%	-3	-4
Maintenance/ Technical	9	8	-1	-13.0%	+0	-0
General Support	53	52	-1	-2.4%	-2	-4
Health Care Assistants	226	226	-0	-0.2%	-2	-3
Care, other	3	3	-0	-3.0%	-0	-0
Patient & Client Care	230	229	-0	-0.2%	-2	-3

Jan 2021 (Dec 2019 figure: 272)	WTE Dec 2020	WTE Jan 2021	WTE change since Dec 20	% change since Dec 20	WTE change since Dec 19	WTE change since Jan 20
Overall	268	269	+1	+0.4%	-3	-4
Registrars	1	2	+1	+100.0%	+1	+1
Medical/ Dental, other	1	1				
Medical & Dental	2	3	+1	+50.0%	+1	+1
Nurse/ Midwife Manager	17	16	-1	-5.8%	-4	-4
Staff Nurse/ Staff Midwife	74	75	+1	+1.4%	+1	-0
Nursing & Midwifery	91	91			-3	-4
Therapy Professions	29	29			-1	-0
Social Workers	6	6				
Psychologists	1	1				
Health & Social Care Professionals	35	35			-1	-0
Management (VIII & above)	1	1			+1	+1
Administrative/ Supervisory (V to VII)	5	6	+1	+20.6%	-0	-0
Clerical (III & IV)	9	9			+2	+2
Management & Administrative	15	16	+1	+6.6%	+3	+3
Support	34	34			-2	-2
Maintenance/ Technical	5	4	-1	-20.0%		-1
General Support	39	38	-1	-2.6%	-2	-3
Health Care Assistants	85	85			-1	-1
Care, other	1	1			+1	+1
Patient & Client Care	86	86				

Stewart's Hospital, (Palmerstown)

Jan 2021 (Dec 2019 figure: 852)	WTE Dec 2020	WTE Jan 2021	WTE change since Dec 20	% change since Dec 20	WTE change since Dec 19	WTE change since Jan 20
Overall	914	916	+3	+0.3%	+65	+61
Consultants	0	0				
Registrars				-100.0%		
Medical & Dental	0	0				
Nurse/ Midwife Manager	32	34	+3	+7.9%	-2	+2
Staff Nurse/ Staff Midwife	81	83	+3	+3.1%	+10	+9
<i>Pre-registration Nurse/ Midwife Intern</i>		7	+7	-100.0%	+7	
Nursing/ Midwifery Student		7	+7	-100.0%	+7	
Nursing/ Midwifery other	1	1				
Nursing & Midwifery	113	125	+12	+10.6%	+16	+11
Therapy Professions	19	18	-1	-5.3%	+2	+3
Social Care	13	13			+3	+2
Social Workers	6	6			+1	+1
Psychologists	4	4			-1	-1
Health & Social Care Professionals	42	41	-1	-2.4%	+5	+5
Management (VIII & above)	16	16			+5	+6
Administrative/ Supervisory (V to VII)	17	17			+3	+3
Clerical (III & IV)	24	25	+1	+4.1%	+2	+1
Management & Administrative	57	58	+1	+1.8%	+10	+9
Support	54	53	-1	-1.8%	-4	-3
Maintenance/ Technical	6	6			+1	+1
General Support	60	59	-1	-1.7%	-3	-2
Health Care Assistants	520	512	-8	-1.5%	+31	+32
Care, other	122	122	-0	-0.3%	+6	+5
Patient & Client Care	642	633	-8	-1.3%	+36	+37

Jan 2021 (Dec 2019 figure: 647)	WTE Dec 2020	WTE Jan 2021	WTE change since Dec 20	% change since Dec 20	WTE change since Dec 19	WTE change since Jan 20
Overall	648	670	+21	+3.3%	+23	+28
Registrars	1	1				
Medical & Dental	1	1				
Nurse/ Midwife Manager	47	47	+0	+0.2%	+3	+3
Nurse/ Midwife Specialist & AN/MP	3	3	-0	-2.7%	-1	-1
Staff Nurse/ Staff Midwife	152	155	+3	+1.8%	+2	+7
<i>Pre-registration Nurse/ Midwife Intern</i>		12	+12	-100.0%	+11	+3
<i>Pre-registration Nurse Intern (COVID-19)</i>	4		-4	-100.0%		
Nursing/ Midwifery Student	4	12	+8	+193.0%	+12	+3
Nursing & Midwifery	206	216	+10	+5.1%	+17	+12
Therapy Professions	3	3				
Social Care	76	77	+2	+2.3%	-1	+0
Social Workers	2	2			-0	-0
Psychologists	1	1				
Health & Social Care Professionals	81	83	+2	+2.1%	-1	+0
Management (VIII & above)	1	1	+0	+7.5%	+0	+0
Administrative/ Supervisory (V to VII)	6	6	+0	+2.6%	+0	+0
Clerical (III & IV)	11	12	+1	+6.0%	+1	+1
Management & Administrative	18	19	+1	+5.0%	+1	+1
Support	19	20	+1	+4.6%	-3	-1
Maintenance/ Technical	3	3	+0	+1.0%	-0	
General Support	22	23	+1	+4.1%	-3	-1
Health Care Assistants	287	294	+7	+2.5%	+13	+18
Care, other	33	33	+0	+0.6%	-3	-2
Patient & Client Care	320	327	+7	+2.3%	+10	+16

St. John of God (IDS)

Jan 2021 (Dec 2019 figure: 456)	WTE Dec 2020	WTE Jan 2021	WTE change since Dec 20	% change since Dec 20	WTE change since Dec 19	WTE change since Jan 20
Overall	468	423	-44	-9.5%	-33	-28
Medical & Dental	1	1				
Nurse/ Midwife Manager	8	7	-1	-12.7%	-1	-1
Staff Nurse/ Staff Midwife	49	50	+1	+2.8%	+4	+3
Nursing & Midwifery	57	57	+0	+0.7%	+3	+2
Therapy Professions	13	13	+0	+0.3%	+1	+1
Social Care	159	159	-0	-0.3%	+12	+9
Social Workers	3	3			-1	
Psychologists	6	5	-1	-23.0%		-1
Health & Social Care Professionals	181	180	-2	-1.0%	+12	+9
Management (VIII & above)	14	3	-11	-79.6%	-12	-12
Administrative/ Supervisory (V to VII)	27	7	-19	-72.3%	-21	-20
Clerical (III & IV)	19	9	-10	-52.1%	-10	-10
Management & Administrative	60	19	-40	-67.7%	-43	-42
Support	12	11	-1	-8.9%	-1	-0
Maintenance/ Technical	5	5			+0	
General Support	17	16	-1	-6.3%	-1	-0
Health Care Assistants	18	20	+2	+10.8%	+1	+3
Care, other	134	130	-3	-2.3%	-6	-1
Patient & Client Care	151	150	-1	-0.8%	-5	+2

St. John of God, Kerry

Jan 2021 (Dec 2019 figure: 315)	WTE Dec 2020	WTE Jan 2021	WTE change since Dec 20	% change since Dec 20	WTE change since Dec 19	WTE change since Jan 20
Overall	320	330	+10	+3.0%	+14	+15
Nurse/ Midwife Manager	15	15			-1	-1
Staff Nurse/ Staff Midwife	47	47			-2	-2
Nursing & Midwifery	62	62			-2	-3
Therapy Professions	4	4			+0	+0
Social Care	46	46	+0	+0.0%	+1	+0
Social Workers	1	1				
Psychologists	1	1			-1	-1
Health & Social Care Professionals	52	52			+1	+0
Management (VIII & above)	1	1				
Administrative/ Supervisory (V to VII)	7	7			-0	+0
Clerical (III & IV)	9	9			-1	-1
Management & Administrative	17	17			-1	-1
General Support	30	30			-0	-0
Health Care Assistants	113	123	+10	+8.5%	+17	+16
Care, other	46	46	-0	-0.0%	-0	+2
Patient & Client Care	159	169	+10	+6.0%	+17	+19

Jan 2021 (Dec 2019 figure: 787)	WTE Dec 2020	WTE Jan 2021	WTE change since Dec 20	% change since Dec 20	WTE change since Dec 19	WTE change since Jan 20
Overall	801	792	-9	-1.1%	+4	+35
Registrars	1	1	+0	+6.0%	+0	-1
Medical & Dental	1	1	+0	+6.0%	+0	-1
Nurse/ Midwife Manager	22	21	-1	-4.1%	+1	+1
Nurse/ Midwife Specialist & AN/MP	1	1				
Staff Nurse/ Staff Midwife	91	91	+0	+0.2%	+1	+3
Nursing & Midwifery	113	113	-1	-0.6%	+2	+5
Therapy Professions	13	11	-2	-17.6%	-4	-4
Social Care	269	267	-2	-0.8%	+14	+23
Social Workers	6	5	-0	-7.6%	-1	-1
Psychologists	6	6	-0	-0.3%	+0	+0
Health & Social Care Professionals	295	290	-5	-1.7%	+10	+19
Management (VIII & above)	5	5	+0	+8.3%	-1	-1
Administrative/ Supervisory (V to VII)	11	11	-0	-2.8%	+0	+0
Clerical (III & IV)	18	19	+1	+6.8%	+1	+2
Management & Administrative	34	36	+1	+3.8%	+1	+2
Support	29	27	-1	-4.7%	-7	-7
Maintenance/ Technical	14	14	-0	-1.4%	+2	+2
General Support	43	41	-2	-3.6%	-6	-4
Health Care Assistants	165	167	+1	+0.8%	-5	+9
Care, other	149	144	-4	-3.0%	+3	+5
Patient & Client Care	314	311	-3	-1.0%	-2	+14

Jan 2021 (Dec 2019 figure: 1,431)	WTE Dec 2020	WTE Jan 2021	WTE change since Dec 20	% change since Dec 20	WTE change since Dec 19	WTE change since Jan 20
Overall	1,453	1,427	-27	-1.8%	-4	+2
Consultants	6	6			-2	-1
Registrars	1	1			-3	-2
Medical/ Dental, other	4	4				
Medical & Dental	11	11			-5	-3
Nurse/ Midwife Manager	88	87	-0	-0.4%	+3	+3
Staff Nurse/ Staff Midwife	165	165	-0	-0.2%	+3	+6
Nursing & Midwifery	253	252	-1	-0.2%	+6	+9
Therapy Professions	46	48	+2	+3.7%	-4	-6
Social Care	565	568	+3	+0.5%	+43	+40
Social Workers	22	21	-1	-2.3%	+1	+1
Psychologists	23	23	+0	+0.6%	+5	+5
H&SC, Other	9	9	-0	-1.8%	-1	-1
Health & Social Care Professionals	665	669	+4	+0.6%	+44	+38
Management (VIII & above)	20	21	+0	+0.8%	-1	-1
Administrative/ Supervisory (V to VII)	46	50	+4	+9.6%	+7	+8
Clerical (III & IV)	53	46	-8	-14.0%	-8	-8
Management & Administrative	120	117	-3	-2.4%	-1	-0
Support	48	46	-2	-3.4%	-50	-49
Maintenance/ Technical	12	12			-0	+0
General Support	60	58	-2	-2.7%	-50	-49
Health Care Assistants	321	296	-25	-7.9%	+3	+8
Care, other	24	24	-0	-0.5%	-1	-1
Patient & Client Care	345	320	-26	-7.4%	+2	+7

St. Patrick's, Kilkenny

Jan 2021 (Dec 2019 figure: 279)	WTE Dec 2020	WTE Jan 2021	WTE change since Dec 20	% change since Dec 20	WTE change since Dec 19	WTE change since Jan 20
Overall	287	285	-1	-0.5%	+6	+11
Nurse/ Midwife Manager	12	12	+0	+0.4%	+2	-1
Staff Nurse/ Staff Midwife	27	26	-1	-2.4%	+1	+1
Pre-registration Nurse/ Midwife Intern		1	+1	-100.0%	+1	+1
Nursing/ Midwifery Student		1	+1	-100.0%	+1	+1
Nursing & Midwifery	39	39	+0	+1.1%	+3	+1
Social Care	28	29	+1	+2.4%	-6	-2
Social Workers	1	1	-0	-27.5%	-1	+0
H&SC, Other	2	2			-1	-1
Health & Social Care Professionals	32	32	+0	+0.9%	-8	-3
Executive Management	1	1			+1	
Management (VIII & above)	1	1			+1	
Administrative/ Supervisory (V to VII)	6	6			-1	-1
Clerical (III & IV)	12	12	+0	+0.3%	-2	-1
Management & Administrative	19	19	+0	+0.2%	-2	-2
Support	1	1	+0	+2.9%	-5	-4
Maintenance/ Technical	3	2	-1	-33.3%	-1	-1
General Support	4	3	-1	-21.9%	-6	-5
Patient & Client Care	193	192	-1	-0.7%	+18	+19

Sunbeam House Services

Jan 2021 (Dec 2019 figure: 449)	WTE Dec 2020	WTE Jan 2021	WTE change since Dec 20	% change since Dec 20	WTE change since Dec 19	WTE change since Jan 20
Overall	450	486	+37	+8.1%	+37	+35
Nurse/ Midwife Manager	4	4				
Staff Nurse/ Staff Midwife	32	35	+3	+9.8%	-2	-0
Nursing & Midwifery	36	39	+3	+8.7%	-2	-0
Therapy Professions	2	3	+1	+41.0%	+2	+2
Social Care	195	213	+18	+9.5%	+31	+34
Social Workers	2	2				+1
Psychologists				-100.0%	-1	-2
H&SC, Other				-100.0%	-1	
Health & Social Care Professionals	199	218	+19	+9.7%	+32	+35
Management (VIII & above)	9	9				+1
Administrative/ Supervisory (V to VII)	9	9				-1
Clerical (III & IV)	25	26	+1	+5.3%	+2	-4
Management & Administrative	42	44	+1	+3.1%	+2	-4
Support	8	5	-3	-41.5%	-0	-9
Maintenance/ Technical				-100.0%	-2	-1
General Support	8	5	-3	-41.5%	-2	-10
Health Care Assistants	65	73	+8	+12.2%	+2	+7
Care, other	99	107	+8	+8.2%	+4	+8
Patient & Client Care	164	180	+16	+9.8%	+6	+15

Bros. of Charity, West Region

Jan 2021 (Dec 2019 figure: 1,288)	WTE Dec 2020	WTE Jan 2021	WTE change since Dec 20	% change since Dec 20	WTE change since Dec 19	WTE change since Jan 20
Overall	1,298	1,281	-17	-1.3%	-7	+7
Consultants	2	2				
Registrars	2	2				-1
Medical & Dental	4	4				-1
Nurse/ Midwife Manager	68	68	-1	-0.8%	+0	-2
Nurse/ Midwife Specialist & AN/MP	5	5	+0	+3.0%	-0	+0
Staff Nurse/ Staff Midwife	124	120	-3	-2.7%	+0	-2
<i>Pre-registration Nurse Intern (COVID-19)</i>	<i>1</i>	<i>1</i>	<i>-0</i>	<i>-7.5%</i>	<i>+1</i>	<i>+1</i>
Nursing/ Midwifery Student	1	1	-0	-7.5%	+1	+1
Nursing & Midwifery	197	193	-4	-1.9%	+1	-3
Therapy Professions	29	30	+1	+3.6%	-4	-4
Social Care	211	214	+3	+1.2%	+18	+20
Social Workers	26	25	-1	-2.0%	-0	-0
Psychologists	12	13	+1	+9.8%	-1	-1
H&SC, Other	12	9	-2	-19.3%	-6	-6
Health & Social Care Professionals	290	292	+2	+0.7%	+7	+8
Management (VIII & above)	13	13	+0	+0.0%	-0	+0
Administrative/ Supervisory (V to VII)	36	38	+1	+3.2%	+3	+3
Clerical (III & IV)	38	37	-1	-2.2%	-0	-1
Management & Administrative	87	87	+0	+0.4%	+3	+2
Support	43	39	-4	-9.6%	-6	-8
Maintenance/ Technical	5	5			+0	+0
General Support	48	44	-4	-8.6%	-6	-8
Health Care Assistants	548	539	-10	-1.7%	-7	+12
Care, other	123	121	-2	-1.2%	-5	-4
Patient & Client Care	671	660	-11	-1.6%	-12	+8

Social Care Services Employment by Grade Group: Jan 2021

Jan 2021 (Dec 2019 figure: 31,535)	WTE Dec 2020	WTE Jan 2021	WTE change since Dec 20	% change since Dec 20	WTE change since Dec 19	WTE change since Jan 20
Overall	32,359	32,352	-7	-0.0%	+817	+994
Consultant Medicine	4	4	-0	-8.1%	+0	-0
Consultant Paediatrics	3	3				
Consultant Psychiatry	21	21	-1	-3.8%	-0	-0
Consultants	29	28	-1	-4.1%	+0	-0
Registrar	9	13	+4	+42.0%	-1	-0
Senior Registrar	4	3	-1	-25.0%		
Specialist Registrar	4	4	-0	-0.8%	-2	-1
Registrars	17	20	+3	+15.9%	-3	-2
SHO/ Interns	23	21	-2	-9.0%	-1	-0
Medical/ Dental, other	118	102	-16	-13.8%	-9	-0
Medical & Dental	186	170	-17	-9.0%	-13	-3
Clinical Nurse/ Midwife Manager	1,350	1,349	-1	-0.1%	+30	+29
Director Nursing/Midwifery, Assistant	152	154	+2	+1.2%	+10	+10
Director of Nursing/Midwifery	141	140	-1	-0.9%	-1	-2
Nurse/ Midwife Manager	1,643	1,643	-0	-0.0%	+40	+38
Advanced Nurse/ Midwife Practitioner	25	26	+1	+4.0%	+13	+12
Clinical Nurse/ Midwife Specialist	78	78	+1	+1.2%	+3	+3
Nurse/ Midwife Specialist & AN/MP	102	104	+2	+1.9%	+16	+15
Staff Midwives	1	1	-0	-10.2%	+1	+1
Staff Nurse [Intellectual Disability]	1,789	1,810	+21	+1.2%	+213	+212
Staff Nurse [Psychiatric]	58	54	-4	-6.9%	-35	-20
Staff Nurses [General/ Children's]	3,369	3,366	-4	-0.1%	-97	-98
Staff Nurse/ Staff Midwife	5,217	5,230	+13	+0.3%	+82	+95
Public Health Nurse	20	20	+0	+0.1%	+1	+2
Pre-registration Nurse/ Midwife Intern	3	64	+62	+2468.8%	+36	-0
Pre-registration Nurse Intern (COVID-19)	32	12	-20	-63.4%	+12	+12
Post-registration Nurse/ Midwife Student				-100.0%	-1	-1
Nursing/ Midwifery awaiting registration	14	15	+0	+1.0%	-0	-3
Nursing/ Midwifery Student	49	90	+42	+85.7%	+46	+8
Nursing Education/Clinical	27	27	-0	-0.6%	+4	+4
Other Nursing/ Midwifery	1	1				
Nursing/ Midwifery other	28	28	-0	-0.6%	+4	+4
Nursing & Midwifery	7,060	7,116	+56	+0.8%	+189	+162
Dietitians	34	34	+0	+0.1%	-0	-1
Occupational Therapists	392	399	+7	+1.8%	+21	+16
Physiotherapists	325	332	+7	+2.2%	+20	+21
Podiatrists & Chiropodists	13	15	+2	+16.6%	+3	+4
Speech & Language Therapists	327	339	+12	+3.5%	+23	+22
Therapy Professions	1,091	1,119	+28	+2.6%	+66	+62
Clinical Engineering	13	14	+1	+7.7%	+1	+2
Clinical Measurement	2	2	-0	-1.9%	+1	+1
Medical Laboratory	4	4				
Phlebotomists				-100.0%	-1	-1
Radiographers	6	6	-0	-0.3%	-1	-0
Health Science/ Diagnostics	25	26	+1	+3.7%	-0	+2
Social Care	2,792	2,814	+22	+0.8%	+216	+222
Social Workers	328	331	+3	+0.8%	+13	+16
Psychologists	230	237	+7	+3.1%	+31	+28

Jan 2021 (Dec 2019 figure: 31,535)	WTE Dec 2020	WTE Jan 2021	WTE change since Dec 20	% change since Dec 20	WTE change since Dec 19	WTE change since Jan 20
Overall	32,359	32,352	-7	-0.0%	+817	+994
Pharmacy	23	23	-0	-0.2%	+1	+0
Counsellor Therapists	20	19	-1	-6.3%	-0	+0
Other Health & Social Care	46	45	-0	-1.0%	-6	-4
Play Therapists/ Specialists	12	12	+0	+2.9%	-4	-4
H&SC, Other	77	76	-1	-1.8%	-10	-7
Health & Social Care Professionals	4,567	4,625	+59	+1.3%	+317	+323
Executive Management	51	47	-4	-7.9%	+4	+4
Senior Management (VIII & GM)	232	226	-6	-2.6%	+14	+10
Management (VIII & above)	283	273	-10	-3.6%	+18	+14
Middle Management (V-VII)	687	680	-6	-0.9%	+52	+48
Other Administrative	16	15	-1	-6.3%	-1	+1
Administrative/ Supervisory (V to VII)	703	695	-7	-1.1%	+51	+49
Clerical (III & IV)	1,272	1,271	-1	-0.1%	+40	+33
Management & Administrative	2,258	2,239	-19	-0.8%	+110	+96
Catering	312	308	-5	-1.6%	-12	-15
Household Services	885	882	-3	-0.3%	-30	-29
Other Labs & Associated	1	1	+0	+6.0%	+0	+0
Other Support	165	162	-3	-1.6%	-60	-60
Portering	101	99	-2	-1.9%	-10	-12
Support	1,464	1,452	-12	-0.8%	-112	-115
Maintenance	216	213	-4	-1.7%	-2	-2
Technical Services	11	11			+3	+3
Maintenance/ Technical	227	224	-4	-1.6%	+1	+2
General Support	1,691	1,675	-16	-0.9%	-111	-114
HCA, Nurse's Aide, etc.	11,182	11,179	-3	-0.0%	+341	+430
Health & Social Care Assistants	38	38	+0	+0.3%	+8	+8
Health Care Assistants	11,221	11,217	-3	-0.0%	+348	+438
Home Help	3,525	3,459	-66	-1.9%	-92	+7
Care, other	1,852	1,851	-2	-0.1%	+69	+86
Patient & Client Care	16,598	16,527	-71	-0.4%	+325	+530

Employment by WTE, Headcount, Gender, Full-Time /Part-Time etc.: Jan 2021

Social Care Services Staff Group	WTE	Headcount	WTE: no.	% Male	% female	Male WTE: no.	Female WTE: no.	% Total Perm	% Male Perm	% Female Perm	% Total Full Time	% Total Part Time	% Male FT	% Female FT
Overall	32,352	38,893	1.20	16.5%	83.5%	1.11	1.22	84.5%	83.9%	84.6%	57.7%	42.3%	73.7%	54.5%
Consultant Medicine	4	7	1.72	14.3%	85.7%	2.00	1.69	85.7%	85.7%	83.3%	28.6%	71.4%	0.0%	33.3%
Consultant Paediatrics	3	6	1.97	16.7%	83.3%	1.82	2.00	66.7%	66.7%	80.0%	33.3%	66.7%	100.0%	20.0%
Consultant Psychiatry	21	27	1.31	29.6%	70.4%	1.28	1.33	85.2%	85.2%	84.2%	59.3%	40.7%	75.0%	52.6%
Consultants	28	40	1.45	25.0%	75.0%	1.37	1.48	82.5%	80.0%	83.3%	50.0%	50.0%	70.0%	43.3%
Registrar	13	17	1.35	29.4%	70.6%	1.22	1.42	23.5%	23.5%	16.7%	88.2%	11.8%	100.0%	83.3%
Senior Registrar	3	3	1.00		100.0%		1.00	33.3%	33.3%	33.3%	100.0%	0.0%		100.0%
Specialist Registrar	4	5	1.26	60.0%	40.0%	1.00	2.06	0.0%	0.0%	0.0%	100.0%	0.0%	100.0%	100.0%
Registrars	20	25	1.28	32.0%	68.0%	1.13	1.37	20.0%	25.0%	17.6%	92.0%	8.0%	100.0%	88.2%
SHO/ Interns	21	27	1.31	33.3%	66.7%	1.31	1.31	7.4%	22.2%	0.0%	100.0%	0.0%	100.0%	100.0%
Medical/ Dental, other	102	184	1.81	63.0%	37.0%	1.88	1.70	58.7%	59.5%	57.4%	35.9%	64.1%	32.8%	41.2%
Medical & Dental	170	276	1.63	51.8%	48.2%	1.72	1.54	53.6%	56.6%	50.4%	49.3%	50.7%	43.4%	55.6%
Clinical Nurse/ Midwife Manager	1,349	1,443	1.07	11.0%	89.0%	1.02	1.08	94.7%	94.7%	95.2%	80.7%	19.3%	93.7%	79.0%
Director Nursing/Midwifery, Assistant	154	162	1.05	7.4%	92.6%	1.01	1.06	97.5%	97.5%	97.3%	90.7%	9.3%	100.0%	90.0%
Director of Nursing/Midwifery	140	142	1.01	6.3%	93.7%	1.02	1.01	97.2%	97.2%	97.0%	97.2%	2.8%	100.0%	97.0%
Nurse/ Midwife Manager	1,643	1,747	1.06	10.3%	89.7%	1.01	1.07	95.2%	91.7%	95.6%	82.9%	17.1%	94.4%	81.6%
Advanced Nurse/ Midwife Practitioner	26	26	1.02	19.2%	80.8%	1.00	1.02	100.0%	100.0%	100.0%	100.0%	0.0%	100.0%	100.0%
Clinical Nurse/ Midwife Specialist	78	89	1.13	5.6%	94.4%	1.01	1.14	97.8%	97.8%	97.6%	59.6%	40.4%	100.0%	57.1%
Nurse/ Midwife Specialist & AN/MP	104	115	1.10	8.7%	91.3%	1.00	1.12	98.3%	100.0%	98.1%	68.7%	31.3%	100.0%	65.7%
Staff Midwives	1	1	1.27		100.0%		1.27	100.0%	100.0%	100.0%	0.0%	100.0%		0.0%
Staff Nurse [Intellectual Disability]	1,810	2,098	1.16	8.3%	91.7%	1.06	1.17	95.1%	95.1%	95.0%	64.1%	35.9%	85.1%	62.2%
Staff Nurse [Psychiatric]	54	71	1.32	15.5%	84.5%	1.41	1.30	80.3%	80.3%	83.3%	59.2%	40.8%	63.6%	58.3%
Staff Nurses [General/ Children's]	3,366	3,916	1.16	8.7%	91.3%	1.05	1.18	90.3%	90.3%	90.5%	62.3%	37.7%	89.4%	59.7%
Staff Nurse/ Staff Midwife	5,230	6,086	1.16	8.6%	91.4%	1.06	1.17	91.9%	90.5%	92.0%	62.9%	37.1%	87.4%	60.6%
Public Health Nurse	20	24	1.18	4.2%	95.8%	1.00	1.19	100.0%	100.0%	100.0%	58.3%	41.7%	100.0%	56.5%
Nursing/ Midwifery Student	90	188	2.08	6.4%	93.6%	2.11	2.08	19.7%	0.0%	21.0%	72.3%	27.7%	91.7%	71.0%
Nursing Education/Clinical	27	29	1.09	3.4%	96.6%	1.00	1.09	96.6%	96.6%	96.4%	79.3%	20.7%	100.0%	78.6%
Other Nursing/ Midwifery	1	1	1.00	100.0%		1.00		100.0%	100.0%		100.0%	0.0%	100.0%	

Nursing/ Midwifery other	28	30	1.09	6.7%	93.3%	1.00	1.09	96.7%	100.0%	96.4%	80.0%	20.0%	100.0%	78.6%
Nursing & Midwifery	7,116	8,190	1.15	8.9%	91.1%	1.06	1.16	91.0%	89.5%	91.2%	67.5%	32.5%	89.5%	65.4%
Dietitians	34	46	1.34	4.3%	95.7%	1.00	1.36	89.1%	89.1%	88.6%	52.2%	47.8%	100.0%	50.0%
Occupational Therapists	399	453	1.14	7.3%	92.7%	1.07	1.14	88.5%	88.5%	88.1%	77.0%	23.0%	90.9%	76.0%
Physiotherapists	332	385	1.16	16.1%	83.9%	1.05	1.18	89.6%	89.6%	89.2%	70.4%	29.6%	91.9%	66.3%
Podiatrists & Chiropodists	15	22	1.49	18.2%	81.8%	1.11	1.61	54.5%	54.5%	55.6%	68.2%	31.8%	75.0%	66.7%
Speech & Language Therapists	339	387	1.14	2.1%	97.9%	1.10	1.14	91.2%	91.2%	91.3%	74.9%	25.1%	100.0%	74.4%
Therapy Professions	1,119	1,293	1.16	8.4%	91.6%	1.06	1.17	89.1%	90.8%	88.9%	73.4%	26.6%	91.7%	71.7%
Clinical Engineering	14	14	1.00	92.9%	7.1%	1.00	1.00	92.9%	92.9%	100.0%	92.9%	7.1%	92.3%	100.0%
Clinical Measurement	2	3	1.42	66.7%	33.3%	1.00	8.33	66.7%	66.7%	0.0%	66.7%	33.3%	100.0%	0.0%
Medical Laboratory	4	4	1.00	75.0%	25.0%	1.00	1.00	75.0%	75.0%	100.0%	100.0%	0.0%	100.0%	100.0%
Radiographers	6	10	1.68	10.0%	90.0%	2.00	1.65	90.0%	90.0%	88.9%	20.0%	80.0%	0.0%	22.2%
Health Science/ Diagnostics	26	31	1.19	61.3%	38.7%	1.03	1.59	87.1%	89.5%	83.3%	67.7%	32.3%	89.5%	33.3%
Social Care	2,814	3,291	1.17	16.1%	83.9%	1.10	1.18	91.0%	91.9%	90.8%	49.3%	50.7%	64.0%	46.5%
Social Workers	331	381	1.15	16.5%	83.5%	1.06	1.17	92.4%	87.3%	93.4%	73.8%	26.2%	85.7%	71.4%
Psychologists	237	270	1.14	21.5%	78.5%	1.08	1.16	92.2%	91.4%	92.5%	73.7%	26.3%	82.8%	71.2%
Pharmacy	23	32	1.38	15.6%	84.4%	1.36	1.38	78.1%	100.0%	74.1%	53.1%	46.9%	60.0%	51.9%
Counsellor Therapists	19	25	1.35	8.0%	92.0%	1.00	1.39	100.0%	100.0%	100.0%	56.0%	44.0%	100.0%	52.2%
Other Health & Social Care	45	59	1.31	18.6%	81.4%	1.11	1.36	86.4%	86.4%	87.5%	50.8%	49.2%	72.7%	45.8%
Play Therapists/ Specialists	12	16	1.31	25.0%	75.0%	1.00	1.46	100.0%	100.0%	100.0%	50.0%	50.0%	100.0%	33.3%
H&SC, Other	76	100	1.32	17.0%	83.0%	1.07	1.38	92.0%	88.2%	92.8%	52.0%	48.0%	82.4%	45.8%
Health & Social Care	4,625	5,398	1.17	14.8%	85.2%	1.09	1.18	90.6%	91.3%	90.5%	58.2%	41.8%	71.8%	55.8%
Executive Management	47	47	1.01	46.8%	53.2%	1.00	1.01	93.6%	93.6%	96.0%	100.0%	0.0%	100.0%	100.0%
Senior Management (VIII & GM)	226	231	1.02	30.3%	69.7%	1.02	1.03	93.1%	93.1%	94.4%	95.2%	4.8%	95.7%	95.0%
Management (VIII & above)	273	278	1.02	33.1%	66.9%	1.01	1.02	93.2%	90.2%	94.6%	96.0%	4.0%	96.7%	95.7%
Middle Management (V-VII)	680	732	1.08	19.9%	80.1%	1.04	1.09	93.3%	93.3%	94.0%	77.7%	22.3%	83.6%	76.3%
Other Administrative	15	15	1.01	20.0%	80.0%	1.00	1.02	100.0%	100.0%	100.0%	93.3%	6.7%	100.0%	91.7%
Administrative/ Supervisory (V to VII)	695	747	1.07	19.9%	80.1%	1.04	1.08	93.4%	90.6%	94.1%	78.0%	22.0%	83.9%	76.6%
Clerical (III & IV)	1,271	1,503	1.18	8.8%	91.2%	1.10	1.19	86.4%	79.5%	87.0%	61.0%	39.0%	80.3%	59.2%
Management & Administrative	2,239	2,528	1.13	14.8%	85.2%	1.05	1.14	89.2%	86.6%	89.7%	69.9%	30.1%	85.8%	67.1%
Catering	308	351	1.14	32.2%	67.8%	1.05	1.19	95.2%	95.2%	97.1%	67.8%	32.2%	89.4%	57.6%
Household Services	882	1,123	1.27	16.9%	83.1%	1.20	1.29	86.0%	86.0%	88.0%	47.4%	52.6%	71.6%	42.4%
Other Labs & Associated	1	2	1.89	50.0%	50.0%	16.67	1.00	50.0%	50.0%	100.0%	50.0%	50.0%	0.0%	100.0%
Other Support	162	256	1.58	50.8%	49.2%	1.29	2.06	91.8%	91.8%	96.8%	32.4%	67.6%	52.3%	11.9%
Portering	99	112	1.13	98.2%	1.8%	1.13	1.30	85.7%	85.7%	100.0%	77.7%	22.3%	78.2%	50.0%

Support	1,452	1,844	1.27	29.5%	70.5%	1.17	1.32	88.5%	83.6%	90.5%	51.0%	49.0%	71.9%	42.3%
Maintenance	213	229	1.08	95.6%	4.4%	1.07	1.29	93.0%	93.0%	100.0%	83.0%	17.0%	85.4%	30.0%
Technical Services	11	11	0.99	72.7%	27.3%	0.99	1.00	90.9%	90.9%	100.0%	100.0%	0.0%	100.0%	100.0%
Maintenance/ Technical	224	240	1.07	94.6%	5.4%	1.07	1.21	92.9%	92.5%	100.0%	83.8%	16.3%	85.9%	46.2%
General Support	1,675	2,084	1.24	37.0%	63.0%	1.14	1.32	89.0%	86.3%	90.6%	54.8%	45.2%	76.0%	42.3%
HCA, Nurse's Aide, etc.	11,179	13,001	1.16	22.1%	77.9%	1.09	1.18	84.6%	84.6%	84.7%	56.1%	43.9%	71.1%	51.9%
Health & Social Care Assistants	38	44	1.14	20.5%	79.5%	1.03	1.18	84.1%	84.1%	80.0%	70.5%	29.5%	100.0%	62.9%
Health Care Assistants	11,217	13,045	1.16	22.1%	77.9%	1.09	1.18	84.6%	84.3%	84.7%	56.2%	43.8%	71.2%	51.9%
Home Help	3,459	5,196	1.50	3.4%	96.6%	1.49	1.50	63.5%	30.7%	64.6%	39.3%	60.7%	53.1%	38.8%
Care, other	1,851	2,176	1.18	25.4%	74.6%	1.16	1.18	87.9%	83.2%	89.5%	62.0%	38.0%	72.3%	58.5%
Patient & Client Care	16,527	20,417	1.24	17.7%	82.3%	1.12	1.26	79.6%	81.5%	79.1%	52.5%	47.5%	70.5%	48.6%

Employment by WTE, Headcount, Gender, Full-Time /Part-Time etc.: Jan 2021

Social Care Services CHO	WTE	Headcount	WTE: no.	% Male	% female	Male WTE: no.	Female WTE: no.	% Total Perm	% Male Perm	% Female Perm	% Total Full Time	% Total Part Time	% Male FT	% Female FT
Overall	32,352	38,893	1.20	16.5%	83.5%	1.11	1.22	84.5%	83.9%	84.6%	57.7%	42.3%	73.7%	54.5%
CHO 1	3,430	4,010	1.17	16.2%	83.8%	1.10	1.18	80.1%	80.1%	79.0%	57.9%	42.1%	80.3%	53.6%
HSE	1,795	2,107	1.17	13.5%	86.5%	1.04	1.20	90.0%	90.0%	90.7%	50.6%	49.4%	89.5%	89.5%
Section 38	1,281	1,625	1.27	23.1%	76.9%	1.25	1.28	82.3%	82.3%	82.0%	39.1%	60.9%	43.7%	43.7%
CHO 2	3,076	3,732	1.21	17.7%	82.3%	1.15	1.23	86.7%	86.7%	87.1%	45.6%	54.4%	63.5%	41.8%
HSE	1,187	1,540	1.30	12.6%	87.4%	1.06	1.34	91.6%	91.6%	92.5%	51.2%	48.8%	88.7%	88.7%
Section 38	1,793	2,145	1.20	12.0%	88.0%	1.18	1.20	84.1%	84.1%	84.5%	37.6%	62.4%	37.7%	37.7%
CHO 3	2,980	3,685	1.24	12.2%	87.8%	1.13	1.25	87.2%	87.2%	87.8%	43.3%	56.7%	59.6%	41.0%
HSE	3,235	4,186	1.29	12.4%	87.6%	1.14	1.32	67.0%	67.0%	68.7%	75.6%	24.4%	87.5%	87.5%
Section 38	2,269	2,749	1.21	19.1%	80.9%	1.15	1.23	85.2%	85.2%	86.5%	63.0%	37.0%	68.2%	68.2%
CHO 4	5,504	6,935	1.26	15.1%	84.9%	1.15	1.28	74.2%	74.2%	75.4%	70.6%	29.4%	77.8%	69.3%
HSE	2,070	2,489	1.20	10.2%	89.8%	1.10	1.22	83.3%	83.3%	83.0%	50.7%	49.3%	82.3%	82.3%
Section 38	1,167	1,369	1.17	21.1%	78.9%	1.12	1.19	83.0%	83.0%	82.0%	47.9%	52.1%	61.6%	61.6%
CHO 5	3,237	3,858	1.19	14.1%	85.9%	1.11	1.21	83.2%	83.2%	82.7%	49.7%	50.3%	71.3%	46.2%
HSE	574	636	1.11	21.1%	78.9%	1.04	1.13	82.5%	82.5%	84.3%	75.2%	24.8%	89.6%	89.6%
Section 38	1,442	1,598	1.11	22.5%	77.5%	1.05	1.13	94.4%	94.4%	94.3%	69.2%	30.8%	83.3%	83.3%
CHO 6	2,016	2,234	1.11	22.1%	77.9%	1.05	1.13	91.0%	91.0%	91.4%	70.9%	29.1%	85.0%	66.9%
HSE	1,158	1,403	1.21	15.5%	84.5%	1.13	1.23	88.8%	88.8%	89.7%	63.2%	36.8%	79.7%	79.7%
Section 38	2,966	3,483	1.17	23.8%	76.2%	1.10	1.20	88.7%	88.7%	88.7%	67.7%	32.3%	81.4%	81.4%
CHO 7	4,124	4,886	1.18	21.4%	78.6%	1.10	1.21	88.7%	88.7%	89.0%	66.4%	33.6%	81.1%	62.4%
HSE	2,090	2,603	1.25	12.6%	87.4%	1.14	1.26	83.0%	83.0%	82.5%	51.4%	48.6%	76.9%	76.9%
Section 38	1,627	1,965	1.21	21.6%	78.4%	1.13	1.23	94.6%	94.6%	94.4%	42.1%	57.9%	48.0%	48.0%
CHO 8	3,716	4,568	1.23	16.5%	83.5%	1.13	1.25	88.0%	88.0%	87.3%	47.4%	52.6%	60.6%	44.8%
HSE	1,122	1,260	1.12	25.6%	74.4%	1.06	1.15	87.3%	87.3%	88.2%	78.8%	21.2%	89.8%	89.8%
Section 38	3,064	3,638	1.19	12.2%	87.8%	1.10	1.20	90.1%	90.1%	90.2%	53.3%	46.7%	67.2%	67.2%
CHO 9	4,186	4,898	1.17	15.7%	84.3%	1.08	1.19	89.4%	89.4%	89.7%	59.8%	40.2%	76.7%	56.7%
other Community Services	82	87	1.06	24.1%	75.9%	1.05	1.06	81.6%	81.6%	81.8%	87.4%	12.6%	90.5%	86.4%

Summary Staff Movement: January 2021

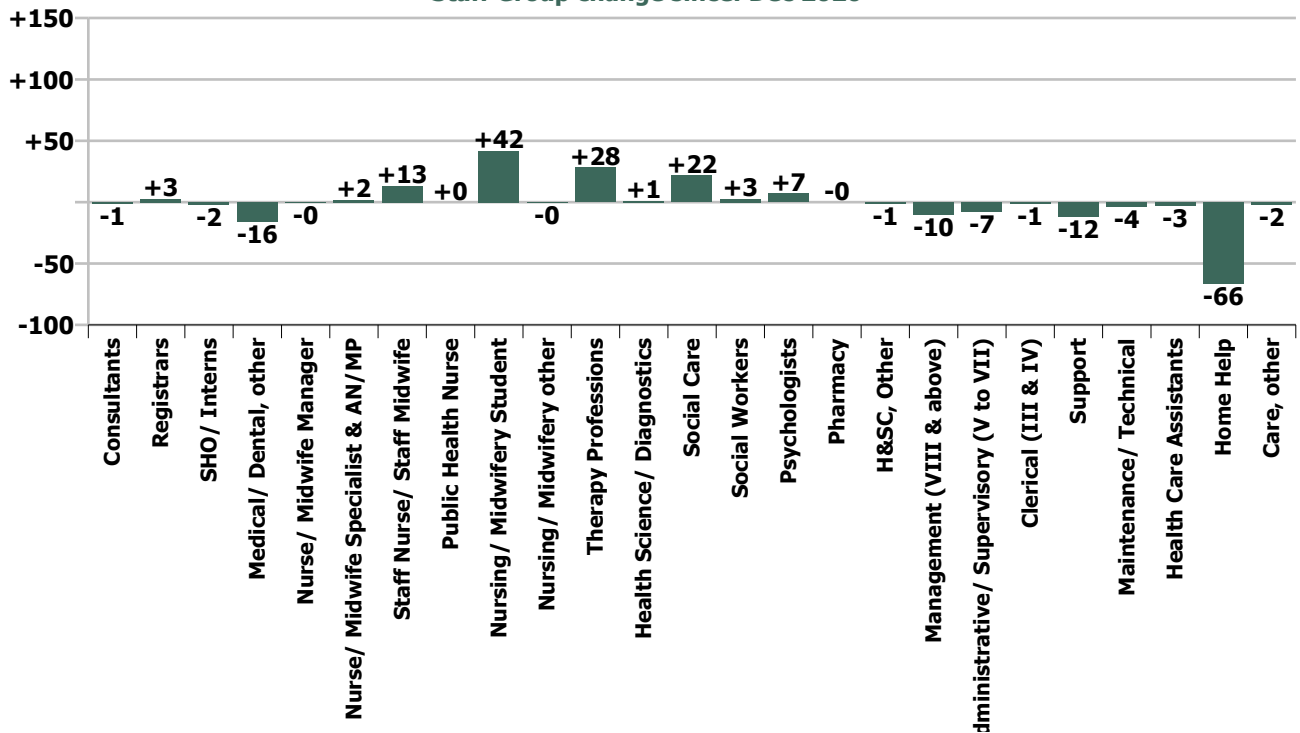
Month-on-month
Summary

WTE change since Dec 20	% change since Dec 20	overall	Consultants	Registrars	SHO/ Interns	Medical/ Dental, other	Medical & Dental	Nurse/ Midwife Manager	Nurse/ Midwife Specialist & AN/MP	Staff Nurse/ Staff Midwife	Public Health Nurse	Nursing/ Midwifery Student	Nursing/ Midwifery other	Nursing & Midwifery	Therapy Professions	Health Science/ Diagnostics	Social Care	Social Workers	Psychologists	Pharmacy	H&SC, Other	Health & Social Care Professionals	Management (VIII & above)	Administrative/ Supervisory (V to VII)	Clerical (III & IV)	Management & Administrative	Support	Maintenance/ Technical	General Support	Health Care Assistants	Home Help	Care, other	Patient & Client Care
Overall	-0.0%	-7	-1.2	+2.7	-2.1	-16.3	-16.8	-0.4	+1.9	+13.2	+0.0	+41.7	-0.2	+56.2	+28.1	+0.9	+21.5	+2.6	+7.1	-0.0	-1.4	+58.9	-10.1	-7.5	-1.1	-18.7	-12.2	-3.6	-15.8	-3.1	-66.2	-1.8	-71.1
CHO 1	-1.0%	-34				-15.3	-15.3	-1.3	+1.0	+7.8		+3.0		+10.5	-0.5	-0.0	+0.2	+1.1	+4.0		+0.3	+5.0	-0.3	+2.0	-1.4	+0.3	+2.5	-1.0	+1.4	+0.1	-34.6	-1.7	-36.2
Disabilities	-1.0%	-15						-0.9	+0.1	-5.3		-0.1		-6.1	+1.4		+4.1	-0.5	+1.2		-2.3	+3.9	+0.1	+1.8	-0.8	+1.1	-4.1		-4.1	-8.7		-1.4	-10.1
Older People	-0.8%	-14						+0.9		+0.6				+1.5	+1.8			-0.0				+1.8		-1.4	-0.5	-1.9	+0.3	-0.1	+0.3	-3.4	-11.6	-0.2	-15.2
CHO 2	-0.9%	-29					0.0	-0.0	+0.1	-4.7		-0.1		-4.6	+3.2		+4.1	-0.5	+1.2		-2.3	+5.7	+0.1	+0.4	-1.3	-0.8	-3.8	-0.1	-3.8	-12.1	-11.6	-1.6	-25.3
Disabilities	-0.3%	-6	-0.8				-0.8	-1.0	-1.0	-2.6		+6.5		+1.8	-0.8		-11.2	-0.4	+0.3		+1.0	-11.2		-0.7	+0.4	-0.3	-1.4	+0.7	-0.7	+6.7		-1.9	+4.8
Older People	+1.0%	+10						+2.4	+0.1	+4.8				+7.2	+1.1	-0.0		+0.6				+1.7		+0.9	+3.4	+4.3	-0.6	+0.3	-0.3	+0.3	-2.0	-0.8	-2.5
CHO 3	+0.1%	+4	-0.8				-0.8	+1.3	-0.9	+2.1		+6.5		+9.1	+0.3	-0.0	-11.2	+0.2	+0.3		+1.0	-9.6		+0.2	+3.8	+4.0	-2.0	+1.0	-1.0	+7.0	-2.0	-2.7	+2.3
Disabilities	+1.2%	+31						+0.0		+3.2		+0.7		+3.9	+0.7		+3.9	-0.6	+0.0		+0.1	+4.2	-0.1	-1.9	+1.6	-0.5	-0.7	+0.0	-0.7	+26.8		-2.9	+23.9
Older People	-0.4%	-13				-0.8	-0.8	+3.0	-0.3	+2.6				+5.3	+2.7			-1.0			-0.1	+1.6	+1.2	-0.8	+3.6	+4.0	-0.1	+0.8	+0.7	+2.2	-26.2	+0.8	-23.3
CHO 4	+0.3%	+18				-0.8	-0.8	+3.0	-0.3	+5.8		+0.7		+9.2	+3.3		+3.9	-1.5	+0.0	-0.1	+0.1	+5.8	+1.1	-2.7	+5.1	+3.5	-0.8	+0.8	+0.0	+29.0	-26.2	-2.1	+0.6
Disabilities	+0.2%	+4						-0.1	+1.8	-3.6		+7.7		+5.9	+2.6		+0.3	-0.4	+1.1			+3.6	-0.0	-0.1	+0.2	+0.1	+0.0	-1.0	-8.5	+0.6	+3.0	-4.9	
Older People	+1.2%	+20						-1.4	+0.0	+4.7	+0.0			+3.3	+1.5			+0.3			+0.0	+1.9		+4.2	+4.3	+8.5	-1.4	+0.0	-1.3	-5.7	+13.1	+0.5	+7.9
CHO 5	+0.7%	+24					0.0	-1.5	+1.9	+1.1	+0.0	+7.7		+9.2	+4.2		+0.3	-0.1	+1.1	+0.0		+5.5	-0.0	+4.1	+4.5	+8.6	-1.3	-1.0	-2.3	-14.2	+13.8	+3.5	+3.0
Disabilities	-0.5%	-7		+1.0			+1.0	-1.2		+4.7				+3.5	+2.1		+17.7	-0.0	-1.1		-0.2	+18.5	-11.6	-19.3	-7.9	-38.7	-4.4		-4.4	+9.5		+4.1	+13.6
Older People	+0.2%	+2		+1.0		-0.1	+0.9	-2.9		-3.0				-5.9	+1.2			+0.7	+0.1	-0.4		+1.7		+1.9	+0.6	+2.5	+0.9	-1.0	-0.1	+2.8		-0.0	+2.7
CHO 6	-0.2%	-5		+2.0		-0.1	+1.9	-4.0		+1.6				-2.4	+3.3		+17.7	+0.7	-1.0	-0.4	-0.2	+20.2	-11.6	-17.3	-7.3	-36.2	-3.5	-1.0	-4.5	+12.3		+4.0	+16.3
Disabilities	-0.0%	-2		-0.2	-0.2		-0.4	+2.3		+5.1		+7.0		+14.4	+1.8		-3.2	+1.1	-1.6	-0.3		-2.1	+0.6	-1.1	+0.2	-0.3	-2.8	-1.4	-4.2	-4.9	-1.0	-3.1	-9.0
Older People	+0.0%	+0						+0.1	+0.0	-0.2		+0.1		+0.1	+1.5			+1.3				+2.8	+0.2	+1.0	+0.3	+1.4	-0.9		+0.1	-3.3		-3.2	
CHO 7	-0.0%	-1		-0.2	-0.2		-0.4	+2.4	+0.0	+4.9		+7.2		+14.5	+3.3		-3.2	+2.4	-1.6	-0.3		+0.7	+0.8	-0.1	+0.5	+1.1	-3.7	-1.4	-5.1	-4.8	-4.3	-3.1	-12.2
Disabilities	+1.3%	+29						+1.4	-0.0	-3.5	-0.0	+8.5	-0.4	+6.0	+0.0		+3.2	+0.1	+1.1		-0.3	+4.3	+0.6	+0.9	+2.7	+4.2	+1.0	+0.0	+1.0	+12.6	-0.1	+0.9	+13.5
Older People	-0.1%	-2				-0.0	-0.0	+1.2	+0.1	-0.5	+0.0		+0.0	+0.9	+1.6			-0.0			+0.7	+2.2	+0.0	+0.2	+0.9	+1.1	-0.2	-0.2	-4.4	-1.1	-0.1	-5.6	
CHO 8	+0.7%	+27				-0.0	-0.0	+2.6	+0.0	-3.9	+0.0	+8.5	-0.3	+6.9	+1.6		+3.2	+0.1	+1.1	+0.7	-0.3	+6.5	+0.6	+1.1	+3.6	+5.3	+0.8	+0.0	+0.8	+8.2	-1.2	+0.8	+7.8
Disabilities	-0.3%	-9		+0.3	-0.5		-0.2	-2.0	+0.2	-3.9		+8.2	+0.2	+2.6	+7.5	+1.0	+6.6	+0.3	+1.9		-0.0	+17.3	+0.2	+3.9	-8.2	-4.1	+0.5	-1.0	-0.5	-25.5		+1.3	-24.2
Older People	-0.4%	-4	-0.4	+0.7	-1.4		-1.1	-0.9	-0.2	+2.3				+1.2	+1.8			-0.0				+1.8	-1.0	+0.7	-1.1	-1.4	-0.9		-0.9	-3.2		-0.1	-3.3
CHO 9	-0.3%	-13	-0.4	+0.9	-1.9		-1.3	-2.9	+0.0	-1.6		+8.2	+0.2	+3.8	+9.3	+1.0	+6.6	+0.3	+1.9		-0.0	+19.1	-0.9	+4.6	-9.3	-5.6	-0.4	-1.0	-1.4	-28.7		+1.2	-27.5
Disabilities																							+0.1	+0.3	+0.7	+1.1							
Older People	+1.5%	+1																					+0.1	+0.3	+0.7	+1.1							
other Community Services	+1.4%	+1																					+0.1	+0.3	+0.7	+1.1							0.0
		-0.0%	-4.1%	+15.9%	-9.0%	-13.8%	-9.0%	-0.0%	+1.9%	+0.3%	+0.1%	+85.7%	-0.6%	+0.8%	+2.6%	+3.7%	+0.8%	+0.8%	+3.1%	-0.2%	-1.8%	+1.3%	-3.6%	-1.1%	-0.1%	-0.8%	-0.8%	-1.6%	-0.9%	-0.0%	-1.9%	-0.1%	-0.4%

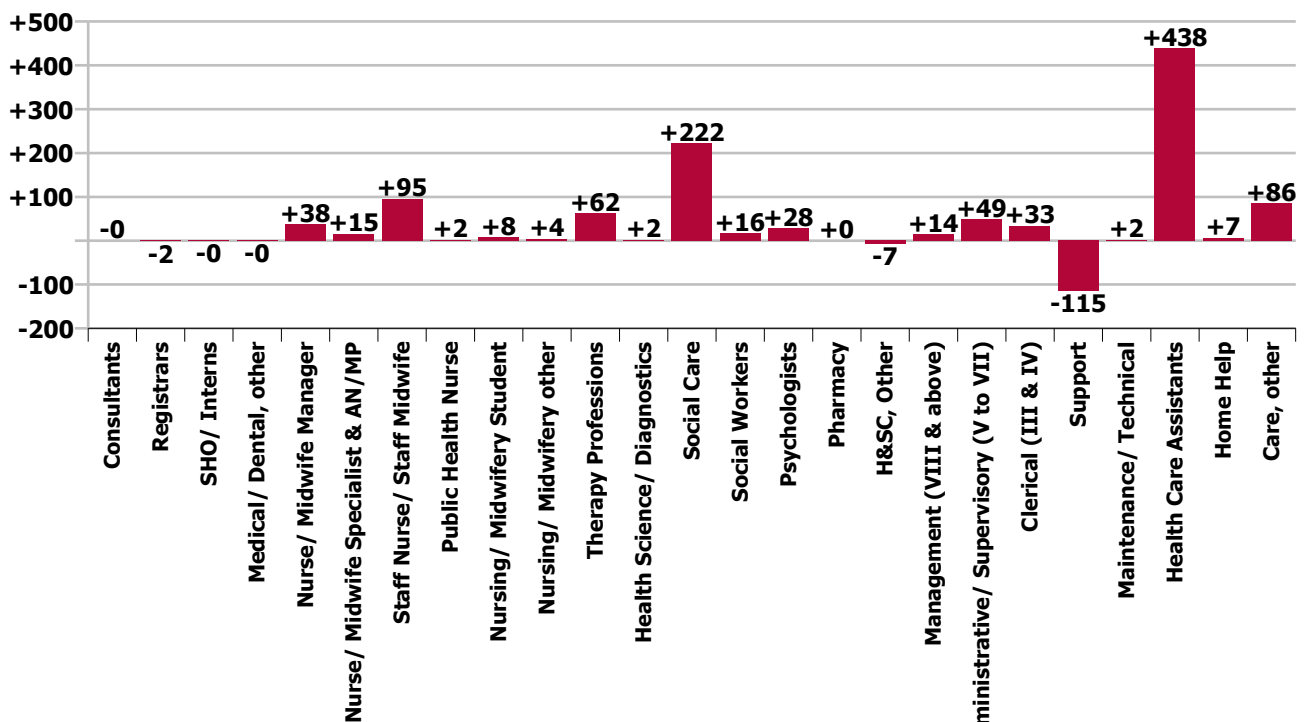
Year-on-year Summary

WTE change since Jan 20	% change since Jan 20	overall	Consultants	Registrars	SHO/ Interns	Medical/ Dental, other	Medical & Dental	Nurse/ Midwife Manager	Nurse/ Midwife Specialist & AN/MP	Staff Nurse/ Staff Midwife	Public Health Nurse	Nursing/ Midwifery Student	Nursing/ Midwifery other	Nursing & Midwifery	Therapy Professions	Health Science/ Diagnostics	Social Care	Social Workers	Psychologists	Pharmacy	H&SC, Other	Health & Social Care Professionals	Management (VIII & above)	Administrative Supervisory (V to VII)	Clerical (III & IV)	Management & Administrative	Support	Maintenance/ Technical	General Support	Health Care Assistants	Home Help	Care, other	Patient & Client Care	
Overall	+3.2%	+994	-0	-2	-0	-0	-3	+38	+15	+95	+2	+8	+4	+162	+62	+2	+222	+16	+28	+0	-7	+323	+14	+49	+33	+96	-115	+2	-114	+438	+7	+86	+530	
Disabilities	+3.9%	+58				-0	-0	+3	+3	+14		-3	-1	+16	-0		+4	+3	+7		-2	+10	+1	+8	+3	+12	+2	+2	+13	+2	+3	+18	+3	+18
Older People	+2.8%	+52				-5	-5	-3	+1	+11			+1	+10	+3	+0		-1				+2	-0	+3	+0	+3	-4	-1	-5	+18	+33	-5	+47	
CHO 1	+3.3%	+110				-5	-5	+0	+4	+24		-3	+0	+25	+3	+0	+4	+1	+7		-2	+12	+1	+10	+3	+15	-2	-1	-3	+32	+34	-1	+65	
Disabilities	+1.2%	+18		-1			-1	-3	+0	-3		+1		-5	-6		+26	-1	-0		-6	+13		+6	-1	+5	-8	-0	-8	+13		+2	+14	
Older People	+2.4%	+36						+8		+3	+0			+11	+1			+1			+0	+2	+1	-1	-5	-5	+2	-0	+2	+11	+9	+7	+27	
CHO 2	+1.8%	+54		-1			-1	+5	+0	-0	+0	+1		+6	-5		+26	-0	-0	-0	-6	+15	+1	+5	-6	-0	-6	-0	-6	+23	+9	+9	+41	
Disabilities	+6.8%	+124	+0				+0	-1	-2	+18		-4		+11	+9	+2	+34	+1	+2		+0	+48	+1	+3	+2	+6	-3	+6	+3	+48		+7	+55	
Older People	+7.6%	+73				+1	+1	+2	+2	-2				+1	+2	+0		-1				+2	+0	-0	+2	+2	-4	-1	-4	+26	+45	+1	+72	
CHO 3	+7.1%	+197	+0			+1	+1	+0	-0	+16		-4		+13	+11	+2	+34	+0	+2		+0	+50	+1	+2	+4	+8	-6	+5	-1	+74	+45	+8	+127	
Disabilities	+5.8%	+142					-1	+1	+1	+3		+3	-1	+6	-5		+15	-1	+3		+2	+14	+1	+1	+7	+9	-3	+2	-1	+94		+21	+114	
Older People	+0.7%	+21				+2	+2	+7	+2	+14	+2	-2		+23	-0	+0		+1			+1	+2	+3	+3	+6	+11	+15	+1	+16	+15	-52	+4	-33	
CHO 4	+3.0%	+163				+2	+2	+7	+3	+17	+2	+1	-1	+29	-5	+0	+15	-0	+3	+1	+2	+16	+4	+3	+13	+20	+12	+3	+15	+109	-52	+24	+81	
Disabilities	+4.2%	+63	-0				-0	+3	+2	-4	+1	-1		+0	+5		-9	+4	+6		-2	+4	+1	+1	+2	+4	-2	-1	-3	+59	-12	+11	+59	
Older People	+1.9%	+31				+5	+5	+3	+2	+0	-1			+4	-7			+1				-5		+7	+4	+11	-41	-4	-45	+54	+8	-2	+60	
CHO 5	+3.0%	+94	-0			+5	+5	+6	+4	-3	-0	-1		+5	-2		-9	+5	+6	+1	-2	-1	+1	+8	+6	+15	-43	-5	-48	+112	-4	+10	+119	
Disabilities	+1.4%	+16	+0	+1			+1	-1		+1				-0	+3		+43	+1	-3		+0	+44	-11	-20	-12	-43	-9	-1	-10	+12		+12	+24	
Older People	-1.7%	-14		+1		-1	-0	-8			-1			-10	-0			-0	-1	-0		+2	+0	-1	+6	+4	-7	-1	-8	+2		-1	+1	
CHO 6	+0.1%	+2	+0	+2		-1	+1	-10		-0				-10	+3		+43	+1	-4	-0	+0	+3	-11	-21	-6	-39	-16	-2	-18	+14		+11	+25	
Disabilities	+4.5%	+134		-1	-0		-1	+3	-1	+10			+1	+13	+18		+34	-1	+1	-1		+51	+9	+14	+5	+27	-14	+3	-11	+41	-2	+16	+55	
Older People	+2.7%	+26				-2	-2	+9	-0	+26		+2		+36	+1			+3		-1		+3	+2	+4	+3	+8	+11		+11	-25	-5	+1	-29	
CHO 7	+4.1%	+161		-1	-0	-2	-3	+11	-1	+35		+2	+1	+48	+19		+34	+2	+1	-2		+54	+11	+17	+7	+36	-3	+3	+0	+16	-7	+16	+53	
Disabilities	+3.6%	+79						+1	-1	-7		+3	+0	-3	+7		+23	+0	-1		-1	+28	+5	+0	+7	+12	-1	-2	-3	+43	+1	+0	+20	
Older People	-0.1%	-2						+10	+2	+4	+1		+2	+19	+7			-1		+0		+7	+1	+2	+0	+3	-1	-0	-1	-11	-20	+2	+1	
CHO 8	+2.1%	+77						+12	+1	-2		+3	+2	+17	+14		+23	-1	-1	+0	-1	+35	+6	+2	+7	+14	-2	-2	-4	+32	-19	+2	+2	
Disabilities	+2.6%	+82	-0	-2	+1		-1	+1	+3	-2		+10	+1	+13	+9		+53	+5	+13		+1	+81	+3	+15	-6	+13	-50	+0	-50	+19		+8	+1	
Older People	+5.8%	+50	-0		-1		-1	+4	+1	+12	-0		+1	+17	+16		-0	+2		+1	+1	+19	-1	+6	+4	+9	+1	+1	+1	+6		-1	+1	
CHO 9	+3.2%	+131	-0	-2	-0		-2	+5	+4	+9	-0	+10	+1	+29	+25		+53	+8	+13	+1	+1	+100	+2	+21	-1	+21	-49	+0	-49	+25		+7	+1	
Disabilities	+20.2%	+1															-1					-1	-1	+1	+1									
Older People	+5.4%	+4																					-1	-1	+1	+5				+0				
other Community Services	+6.4%	+5															-1						-1	-1	+0	+6	+6							
		+3.2%	-1.1%	-7.2%	-2.2%	-0.4%	-1.6%	+2.3%	+17.2%	+1.9%	+9.4%	+9.5%	+16.9%	+2.3%	+5.9%	+6.9%	+8.6%	+5.2%	+13.4%	+0.7%	-9.0%	+7.5%	+5.4%	+7.5%	+2.7%	+4.5%	-7.4%	+0.7%	-6.4%	+4.1%	+0.2%	+4.9%	+3.3%	

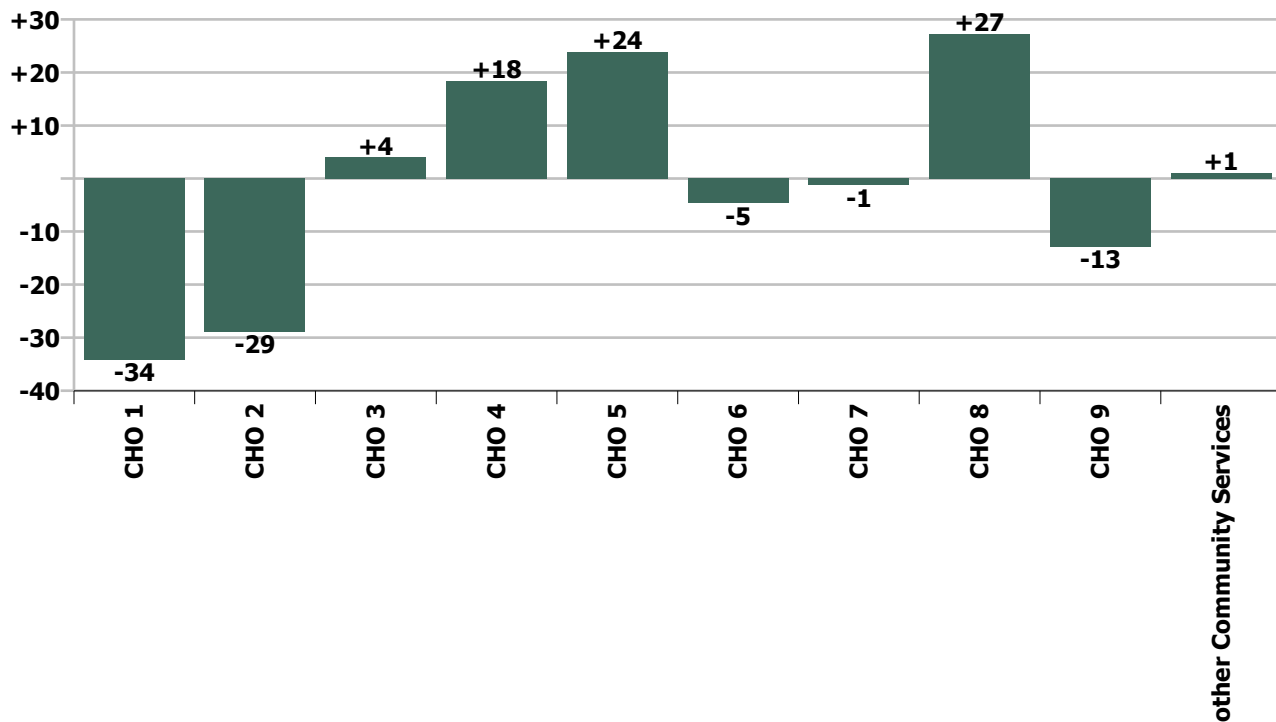
Staff Group change since: Dec 2020



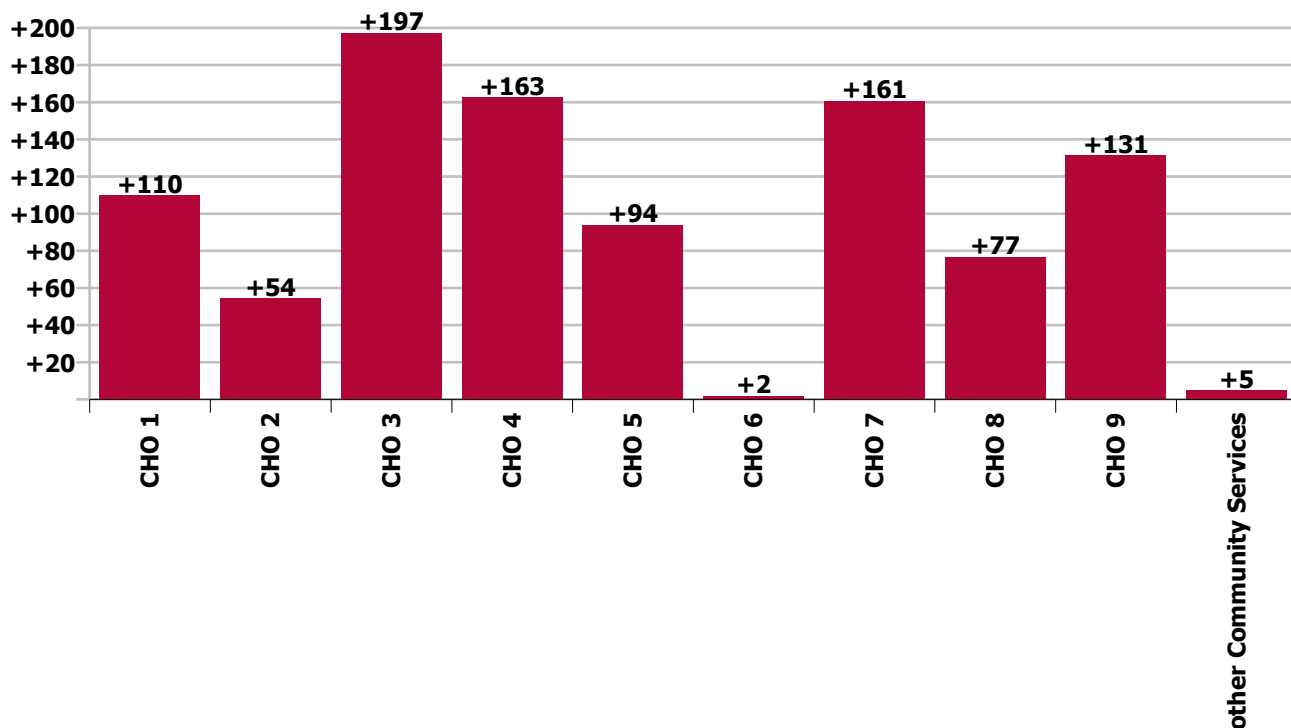
Staff Group change since: Jan 2020



CHO change since: Dec 2020



CHO change since: Jan 2020



Longitudinal Employment Levels by Grade Group - Oct 2013 to Jan 2021

Jan 2021 (Oct 2013 figure: 26,374)	WTE Jan 2021	WTE change since Oct 13	WTE change since Dec 15	WTE change since Dec 16	WTE change since Dec 17	WTE change since Dec 18	WTE change since Dec 19	% change since Oct 13	% change since Dec 15	% change since Dec 16	% change since Dec 17	% change since Dec 18	% change since Dec 19
Overall	32,352	+5,978	+4,030	+3,115	+1,852	+1,228	+817	+22.7%	+14.2%	+10.7%	+6.1%	+3.9%	+2.6%
Consultant Medicine	4	+0	-4	-7	-5	+0	+0	+13.1%	-50.5%	-63.0%	-55.9%	+12.8%	+12.8%
Consultant Paediatrics	3	+0	-0	-0	-0			+6.6%	-3.5%	-5.0%	-2.9%		
Consultant Psychiatry	21	-9	-1	-1	-3	+3	-0	-29.8%	-6.3%	-6.6%	-13.3%	+14.7%	-1.4%
Consultant Radiology		-0						-100.0%	-100.0%	-100.0%	-100.0%	-100.0%	-100.0%
Consultant Surgery		-1	-1	-1	-0	-0		-100.0%	-100.0%	-100.0%	-100.0%	-100.0%	-100.0%
Consultants	28	-9	-7	-9	-9	+3	+0	-25.3%	-19.6%	-25.3%	-23.5%	+12.0%	+0.6%
Registrar	13	-4	-2	+1	-1	-0	-1	-24.3%	-10.9%	+9.0%	-7.1%	-1.0%	-7.1%
Senior Registrar	3	-1	-1		-1	-1		-25.0%	-25.0%		-25.0%	-25.0%	
Specialist Registrar	4	-0	-1	-0	-1	+2	-2	-0.8%	-20.6%	-0.8%	-20.6%	+98.5%	-33.8%
Registrars	20	-5	-4	+1	-3	+1	-3	-20.6%	-15.4%	+5.5%	-13.3%	+4.5%	-13.3%
SHO/ Interns	21	+0	+5	+5	+4	+2	-1	+0.9%	+30.6%	+29.3%	+21.9%	+9.2%	-6.1%
Dentists			-1					-100.0%	-100.0%	-100.0%	-100.0%	-100.0%	-100.0%
Other Medical	102	+0	+4	+1	+2	+2	-9	+0.3%	+3.7%	+1.0%	+1.7%	+2.2%	-8.1%
Medical/ Dental, other	102	+0	+3	+1	+2	+2	-9	+0.3%	+3.2%	+1.0%	+1.7%	+2.2%	-8.1%
Medical & Dental	170	-14	-2	-3	-6	+8	-13	-7.6%	-1.4%	-1.5%	-3.5%	+4.8%	-7.2%
Clinical Nurse/ Midwife Manager	1,349	+74	+23	+3	+13	+17	+30	+5.8%	+1.8%	+0.3%	+0.9%	+1.3%	+2.3%
Director Nursing/Midwifery, Assistant	154	+34	+31	+24	+25	+29	+10	+27.9%	+25.5%	+18.3%	+19.4%	+23.3%	+7.2%
Director of Nursing/Midwifery	140	+26	+12	+11	+12	+19	-1	+22.4%	+9.3%	+8.8%	+9.3%	+16.0%	-0.4%
Nurse/ Midwife Manager	1,643	+133	+66	+39	+49	+65	+40	+8.8%	+4.2%	+2.4%	+3.1%	+4.1%	+2.5%
Advanced Nurse/ Midwife Practitioner	26	+22	+23	+22	+21	+17	+13	+559.8%	+753.3%	+540.0%	+412.0%	+185.1%	+101.3%
Clinical Nurse/ Midwife Specialist	78	-19	-12	-5	-1	-5	+3	-19.7%	-12.9%	-6.0%	-0.8%	-5.5%	+3.7%
Nurse/ Midwife Specialist & AN/MP	104	+2	+11	+17	+20	+12	+16	+2.4%	+11.8%	+19.0%	+23.7%	+13.1%	+17.8%
Graduate Nursing/ Midwifery		-11	-13					-100.0%	-100.0%	-100.0%	-100.0%	-100.0%	-100.0%
Staff Midwives	1	-0	-0	+0	-1	+1	+1	-21.0%	-1.2%	+97.5%	-56.1%	-100.0%	-100.0%
Staff Nurse [Intellectual Disability]	1,810	+53	+29	+84	+106	+125	+213	+3.0%	+1.6%	+4.9%	+6.2%	+7.4%	+13.3%
Staff Nurse [Psychiatric]	54	-96	-56	-37	-22	-23	-35	-64.0%	-51.1%	-40.4%	-29.2%	-29.6%	-39.1%
Staff Nurses [General/ Children's]	3,366	-406	-138	-150	-120	-107	-97	-10.8%	-3.9%	-4.3%	-3.4%	-3.1%	-2.8%
Staff Nurse/ Staff Midwife	5,230	-459	-178	-102	-36	-4	+82	-8.1%	-3.3%	-1.9%	-0.7%	-0.1%	+1.6%
Public Health Nurse	20	-1	-2	-0	-1	+0	+1	-6.6%	-10.4%	-1.9%	-2.4%	+0.4%	+3.4%
Pre-registration Nurse/ Midwife Intern	64	+41	+50	+52	+52	+29	+36	+178.7%	+349.7%	+435.2%	+444.7%	+84.4%	+127.3%
Pre-registration Nurse Intern (COVID-19)	12	+12	+12	+12	+12	+12	+12	-100.0%	-100.0%	-100.0%	-100.0%	-100.0%	-100.0%
Post-registration Nurse/ Midwife Student		-1					-1	-100.0%	-100.0%	-100.0%	-100.0%	-100.0%	-100.0%
Nursing/ Midwifery awaiting registration	15	+15	+15	+15	+1	+15	-0	-100.0%	-100.0%	-100.0%	+3.6%	-100.0%	-2.3%
Nursing/ Midwifery Student	90	+66	+76	+78	+65	+56	+46	+275.8%	+532.6%	+652.8%	+250.3%	+159.4%	+104.9%
Nursing Education/Clinical	27	-0	+5	+4	+5	+4	+4	-0.5%	+24.3%	+19.6%	+20.4%	+20.1%	+20.0%
Other Nursing/ Midwifery	1	-7	-5	-4	-4			-87.1%	-84.5%	-80.0%	-80.0%		
Nursing/ Midwifery other	28	-7	-0	+0	+1	+4	+4	-20.0%	-0.9%	+1.3%	+1.9%	+19.2%	+19.1%

Jan 2021 (Oct 2013 figure: 26,374)	WTE Jan 2021	WTE change since Oct 13	WTE change since Dec 15	WTE change since Dec 16	WTE change since Dec 17	WTE change since Dec 18	WTE change since Dec 19	% change since Oct 13	% change since Dec 15	% change since Dec 16	% change since Dec 17	% change since Dec 18	% change since Dec 19
Overall	32,352	+5,978	+4,030	+3,115	+1,852	+1,228	+817	+22.7%	+14.2%	+10.7%	+6.1%	+3.9%	+2.6%
Nursing & Midwifery	7,116	-265	-27	+31	+98	+133	+189	-3.6%	-0.4%	+0.4%	+1.4%	+1.9%	+2.7%
Dietitians	34	+8	+12	+5	+5	+3	-0	+30.1%	+55.3%	+18.7%	+17.1%	+11.0%	-1.1%
Occupational Therapists	399	+141	+105	+52	+55	+54	+21	+54.5%	+35.6%	+14.9%	+16.1%	+15.6%	+5.6%
Physiotherapists	332	+70	+46	+32	+27	+24	+20	+26.5%	+16.2%	+10.5%	+8.7%	+7.8%	+6.2%
Podiatrists & Chiropodists	15	+2	+3	-0	-1	-0	+3	+11.7%	+22.0%	-0.3%	-8.7%	-1.3%	+22.5%
Speech & Language Therapists	339	+142	+105	+48	+32	+37	+23	+72.6%	+45.1%	+16.4%	+10.6%	+12.1%	+7.3%
Therapy Professions	1,119	+362	+271	+136	+118	+118	+66	+47.8%	+32.0%	+13.9%	+11.8%	+11.7%	+6.3%
Audiology		-7	-14	-13	-18			-100.0%	-100.0%	-100.0%	-100.0%	-100.0%	-100.0%
Clinical Engineering	14	-4	-4	-4	-4	+2	+1	-22.1%	-22.9%	-23.8%	-22.5%	+16.2%	+7.3%
Clinical Measurement	2	+1	+1	+1	+1	+1	+1	+112.0%	+112.0%	+112.0%	+112.0%	+96.3%	+75.2%
Medical Laboratory	4	+1	+1		+1			+33.3%	+33.3%		+33.3%		
Phlebotomists		-1	-1	-1	-1	-1	-1	-100.0%	-100.0%	-100.0%	-100.0%	-100.0%	-100.0%
Radiographers	6	-4	-2	-2	-2	-1	-1	-38.1%	-27.9%	-26.6%	-27.5%	-10.3%	-14.1%
Health Science/ Diagnostics	26	-13	-19	-19	-23	+1	-0	-33.5%	-42.5%	-42.3%	-47.0%	+5.3%	-0.5%
Social Care	2,814	+1,050	+870	+619	+465	+322	+216	+59.5%	+44.8%	+28.2%	+19.8%	+12.9%	+8.3%
Social Workers	331	+95	+67	+28	+26	+16	+13	+40.2%	+25.3%	+9.4%	+8.6%	+5.2%	+4.2%
Psychologists	237	+69	+45	+27	+14	+30	+31	+41.2%	+23.5%	+12.8%	+6.1%	+14.6%	+15.1%
Pharmacy	23	+4	+2	+3	+2	-0	+1	+23.6%	+10.6%	+12.2%	+8.2%	-0.5%	+5.3%
Counsellor Therapists	19	+6	+2	+2	-1	+1	-0	+45.6%	+11.3%	+10.0%	-4.7%	+4.3%	-2.0%
HSCP Trainees/ Students		-2	-3	-2	-1			-100.0%	-100.0%	-100.0%	-100.0%	-100.0%	-100.0%
Other Health & Social Care	45	-25	-18	-14	-15	-8	-6	-35.7%	-28.4%	-24.3%	-24.9%	-15.2%	-11.3%
Play Therapists/ Specialists	12	-5	-2	-3	-2	-3	-4	-30.5%	-16.0%	-19.8%	-13.8%	-21.5%	-25.7%
H&SC, Other	76	-27	-22	-18	-18	-11	-10	-26.0%	-22.1%	-19.3%	-19.5%	-12.3%	-12.0%
Health & Social Care Professionals	4,625	+1,540	+1,215	+776	+583	+477	+317	+49.9%	+35.6%	+20.2%	+14.4%	+11.5%	+7.4%
Executive Management	47	+18	+13	+11	+1	+5	+4	+61.5%	+37.5%	+29.9%	+1.8%	+11.9%	+9.6%
Senior Management (VIII & GM)	226	+97	+59	+48	+48	+33	+14	+75.1%	+35.5%	+26.9%	+27.1%	+17.0%	+6.7%
Management (VIII & above)	273	+115	+72	+59	+49	+38	+18	+72.6%	+35.8%	+27.4%	+21.9%	+16.1%	+7.2%
Middle Management (V-VII)	680	+259	+230	+184	+160	+111	+52	+61.6%	+51.2%	+37.2%	+30.8%	+19.4%	+8.3%
Other Administrative	15	-4	-1		-2	-2	-1	-19.7%	-8.8%		-12.6%	-11.9%	-7.1%
Administrative/ Supervisory (V to VII)	695	+256	+229	+184	+158	+109	+51	+58.2%	+49.1%	+36.1%	+29.4%	+18.5%	+8.0%
Clerical (III & IV)	1,271	+290	+227	+181	+130	+53	+40	+29.6%	+21.8%	+16.6%	+11.4%	+4.4%	+3.2%
Management & Administrative	2,239	+660	+528	+424	+337	+200	+110	+41.8%	+30.9%	+23.4%	+17.7%	+9.8%	+5.1%
Catering	308	-26	-20	-19	-10	-12	-12	-7.7%	-6.1%	-5.7%	-3.1%	-3.8%	-3.7%
Household Services	882	-366	-249	-189	-129	-88	-30	-29.4%	-22.0%	-17.6%	-12.8%	-9.0%	-3.3%
Other Labs & Associated	1	+0	-0	-0	+0	+0	+0	+6.0%	-11.7%	-0.9%	+6.0%	+1.9%	+6.0%
Other Support	162	-77	-90	-72	-71	-67	-60	-32.2%	-35.7%	-30.7%	-30.3%	-29.2%	-27.0%
Portering	99	-41	-13	-13	-11	-6	-10	-29.3%	-11.8%	-11.2%	-10.2%	-5.9%	-9.1%
Support	1,452	-510	-372	-292	-221	-173	-112	-26.0%	-20.4%	-16.7%	-13.2%	-10.6%	-7.1%

Jan 2021 (Oct 2013 figure: 26,374)	WTE Jan 2021	WTE change since Oct 13	WTE change since Dec 15	WTE change since Dec 16	WTE change since Dec 17	WTE change since Dec 18	WTE change since Dec 19	% change since Oct 13	% change since Dec 15	% change since Dec 16	% change since Dec 17	% change since Dec 18	% change since Dec 19
Overall	32,352	+5,978	+4,030	+3,115	+1,852	+1,228	+817	+22.7%	+14.2%	+10.7%	+6.1%	+3.9%	+2.6%
Maintenance	213	-28	-21	-16	-20	-10	-2	-11.6%	-9.0%	-6.9%	-8.7%	-4.4%	-0.9%
Technical Services	11	+7	+6	+6	+6	+5	+3	+170.7%	+117.6%	+117.6%	+117.6%	+82.0%	+37.0%
Maintenance/ Technical	224	-21	-15	-10	-14	-5	+1	-8.5%	-6.3%	-4.2%	-6.0%	-2.1%	+0.5%
General Support	1,675	-531	-387	-302	-235	-178	-111	-24.1%	-18.8%	-15.3%	-12.3%	-9.6%	-6.2%
HCA, Nurse's Aide, etc.	11,179	+3,180	+2,023	+1,379	+918	+517	+341	+39.7%	+22.1%	+14.1%	+8.9%	+4.9%	+3.1%
Health & Social Care Assistants	38	+6	+0	+2	+3	+3	+8	+17.9%	+0.8%	+4.8%	+9.9%	+9.4%	+24.7%
Health Care Assistants	11,217	+3,186	+2,024	+1,381	+921	+521	+348	+39.7%	+22.0%	+14.0%	+8.9%	+4.9%	+3.2%
Home Help	3,459	+1,012	+366	+568	-21	-74	-92	+41.4%	+11.8%	+19.7%	-0.6%	-2.1%	-2.6%
Ambulance Staff		-8						-100.0%	-100.0%	-100.0%	-100.0%	-100.0%	-100.0%
Care, other	1,851	+398	+314	+239	+175	+141	+69	+27.4%	+20.4%	+14.8%	+10.4%	+8.3%	+3.9%
Patient & Client Care	16,527	+4,587	+2,703	+2,188	+1,075	+588	+325	+38.4%	+19.6%	+15.3%	+7.0%	+3.7%	+2.0%

Source: Health Service Personnel Census