

Social Care Services Employment Report: July 2020

Employment by Staff Group

Jul 2020 (Dec 2019 figure: 31,535)	WTE Jun 2020	WTE Jul 2020	WTE change since Jun 20	% change since Jun 20	WTE change since Dec 19	WTE change since Jul 19
Overall	31,732	31,892	+160	+0.5%	+356	+455
Consultants	27	27	+0	+0.4%	-1	+0
Registrars	20	18	-1	-7.3%	-4	-2
SHO/ Interns	23	21	-2	-7.2%	-1	+0
Medical/ Dental, other	100	99	-1	-0.8%	-11	-1
Medical & Dental	170	166	-4	-2.2%	-17	-3
Nurse/ Midwife Manager	1,628	1,639	+11	+0.7%	+37	+16
Nurse/ Midwife Specialist & AN/MP	98	96	-2	-1.8%	+8	+8
Staff Nurse/ Staff Midwife	5,158	5,135	-23	-0.4%	-14	+8
Public Health Nurse	19	20	+0	+0.5%	-0	+1
<i>Pre-registration Nurse/ Midwife Intern</i>	7	6.79	-0	-3.0%	-21	-63
<i>Pre-registration Nurse Intern (COVID-19)</i>	160	154.94	-5	-3.0%	+155	+155
<i>Post-registration Nurse/ Midwife Student</i>	5	3.93	-1	-21.4%	+3	+4
<i>Nursing/ Midwifery awaiting registration</i>	13	13.55	+1	+8.4%	-1	+14
Nursing/ Midwifery Student	184	179	-5	-2.8%	+135	+110
Nursing/ Midwifery other	28	28	+0	+0.2%	+5	+5
Nursing & Midwifery	7,115	7,097	-18	-0.3%	+170	+147
Therapy Professions	1,082	1,082	-1	-0.1%	+29	+68
Health Science/ Diagnostics	24	24	+0	+0.4%	-2	-1
Social Care	2,617	2,621	+4	+0.2%	+23	+55
Social Workers	322	319	-3	-1.0%	+2	-0
Psychologists	214	215	+0	+0.1%	+8	+6
Pharmacy	24	25	+1	+5.1%	+3	+4
H&SC, Other	84	85	+0	+0.3%	-1	-0
Health & Social Care Professionals	4,368	4,370	+2	+0.0%	+61	+131
Management (VIII & above)	261	264	+3	+1.3%	+10	+12
Administrative/ Supervisory (V to VII)	671	668	-3	-0.4%	+24	+45
Clerical (III & IV)	1,242	1,246	+4	+0.3%	+14	+26
Management & Administrative	2,173	2,178	+5	+0.2%	+48	+83
Support	1,556	1,545	-11	-0.7%	-18	-30
Maintenance/ Technical	228	229	+1	+0.6%	+6	-0
General Support	1,783	1,774	-9	-0.5%	-12	-31
Health Care Assistants	11,194	11,325	+130	+1.2%	+455	+397
Home Help	3,197	3,249	+51	+1.6%	-302	-295
Care, other	1,730	1,734	+3	+0.2%	-47	+25
Patient & Client Care	16,122	16,307	+185	+1.1%	+106	+128

Social Care Services Employment by Administration (HSE / S38): July 2020

Jul 2020 (Dec 2019 figure: 31,535)	WTE Jun 2020	WTE Jul 2020	WTE change since Jun 20	% change since Jun 20	WTE change since Dec 19	WTE change since Jul 19
Overall	31,732	31,892	+160	+0.5%	+356	+455
HSE	16,569	16,716	+147	+0.9%	+288	+212
Section 38	15,163	15,176	+13	+0.1%	+68	+243

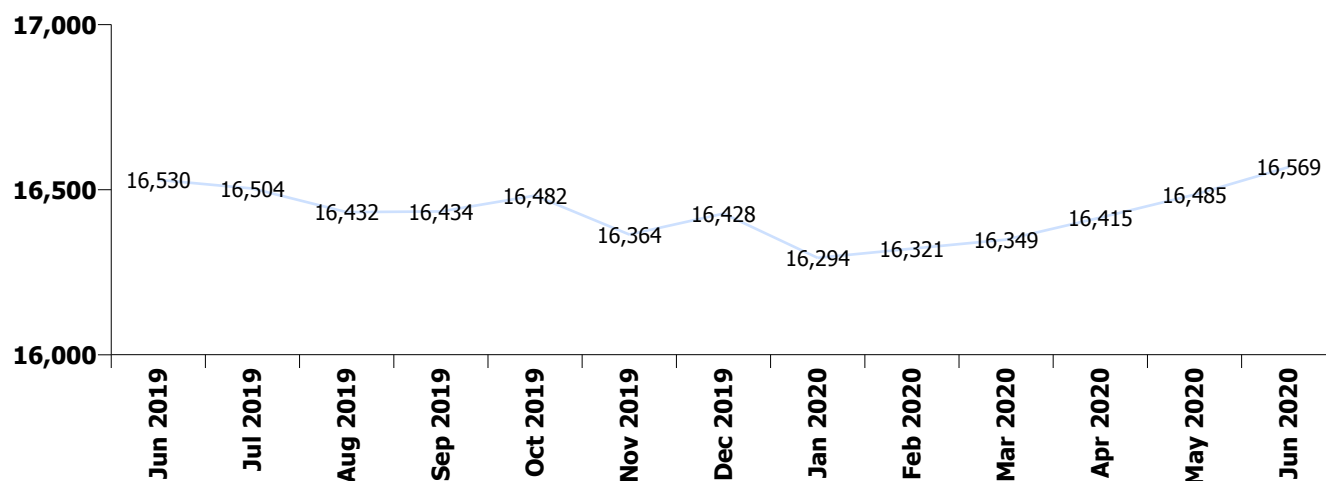
HSE

Jul 2020 (Dec 2019 figure: 16,428)	WTE Jun 2020	WTE Jul 2020	WTE change since Jun 20	% change since Jun 20	WTE change since Dec 19	WTE change since Jul 19
Overall	16,569	16,716	+147	+0.9%	+288	+212
Consultants	11	10.50				
Registrars	8	7.49	-1	-6.5%	-2	-1
SHO/ Interns	11	9.83	-1	-10.6%	-0	+1
Medical/ Dental, other	90	89.36	-0	-0.5%	-11	-1
Medical & Dental	119	117	-2	-1.8%	-14	-1
Nurse/ Midwife Manager	934	946.53	+13	+1.4%	+33	+11
Nurse/ Midwife Specialist & AN/MP	50	49.04	-1	-1.4%	+9	+9
Staff Nurse/ Staff Midwife	3,211	3,196.98	-14	-0.4%	+5	+8
Public Health Nurse	19	19.53	+0	+0.5%	-0	+1
Pre-registration Nurse/ Midwife Intern	7	6.79	-0	-3.0%	+4	-14
Pre-registration Nurse Intern (COVID-19)	43	37.60	-5	-12.6%	+38	+38
Post-registration Nurse/ Midwife Student	1		-1	-100.0%	-1	
Nursing/ Midwifery awaiting registration	13	13.55	+1	+8.4%	-1	+14
Nursing/ Midwifery Student	64	57.94	-6	-8.8%	+39	+37
Nursing/ Midwifery other	11	10.67	+0	+0.5%	+2	+1
Nursing & Midwifery	4,288	4,281	-8	-0.2%	+88	+68
Therapy Professions	582	582.79	+1	+0.1%	+21	+45
Health Science/ Diagnostics	7	7.03	+0	+1.4%	-0	+1
Social Care	95	95.89	+1	+1.4%	+4	-2
Social Workers	148	148.03	+0	+0.3%	+6	+0
Psychologists	75	76.91	+2	+2.2%	-1	-3
Pharmacy	12	12.08	+0	+1.6%	+1	+2
H&SC, Other	25	27.10	+2	+7.7%	-1	+0
Health & Social Care Professionals	944	950	+6	+0.7%	+31	+44
Management (VIII & above)	123	124.53	+1	+0.9%	+7	+12
Administrative/ Supervisory (V to VII)	303	301.08	-2	-0.7%	+14	+27
Clerical (III & IV)	728	727.13	-1	-0.1%	+5	+17
Management & Administrative	1,154	1,153	-2	-0.1%	+26	+56
Support	805	814.23	+9	+1.1%	-1	-21
Maintenance/ Technical	112	114.64	+3	+2.4%	+5	+3
General Support	917	929	+12	+1.3%	+5	-18
Health Care Assistants	5,694	5,783.29	+90	+1.6%	+446	+354
Home Help	3,197	3,248.73	+51	+1.6%	-302	-295
Care, other	255	254.57	-0	-0.0%	+9	+4

Patient & Client Care	9,146	9,287	+141	+1.5%	+153	+63
-----------------------	-------	-------	------	-------	------	-----

Section 38

Jul 2020 (Dec 2019 figure: 15,107)	WTE Jun 2020	WTE Jul 2020	WTE change since Jun 20	% change since Jun 20	WTE change since Dec 19	WTE change since Jul 19
Overall	15,163	15,176	+13	+0.1%	+68	+243
Consultants	16	16.44	+0	+0.6%	-1	+0
Registrars	12	10.71	-1	-7.9%	-2	-2
SHO/ Interns	12	11.42	-0	-4.1%	-1	-1
Medical/ Dental, other	10	10.09	-0	-3.4%		
Medical & Dental	50	49	-2	-3.3%	-3	-2
Nurse/ Midwife Manager	694	692.95	-1	-0.2%	+4	+4
Nurse/ Midwife Specialist & AN/MP	48	46.87	-1	-2.1%	-1	-1
Staff Nurse/ Staff Midwife	1,946	1,937.66	-9	-0.4%	-19	-1
Pre-registration Nurse/ Midwife Intern				-100.0%	-25	-49
Pre-registration Nurse Intern (COVID-19)	117	117.34	+1	+0.5%	+117	+117
Post-registration Nurse/ Midwife Student	4	3.93	-0	-1.7%	+4	+4
Nursing/ Midwifery Student	121	121.27	+0	+0.4%	+96	+72
Nursing/ Midwifery other	17	17.26			+3	+4
Nursing & Midwifery	2,827	2,816	-11	-0.4%	+82	+79
Therapy Professions	500	498.82	-1	-0.3%	+8	+23
Health Science/ Diagnostics	17	17.00			-2	-2
Social Care	2,522	2,524.72	+3	+0.1%	+19	+57
Social Workers	175	170.88	-4	-2.1%	-4	-1
Psychologists	139	137.62	-2	-1.1%	+9	+9
Pharmacy	12	13.18	+1	+8.5%	+2	+3
H&SC, Other	59	57.68	-2	-2.8%	-1	-1
Health & Social Care Professionals	3,425	3,420	-5	-0.1%	+30	+88
Management (VIII & above)	137	139.44	+2	+1.6%	+3	+0
Administrative/ Supervisory (V to VII)	368	367.19	-1	-0.1%	+10	+18
Clerical (III & IV)	514	518.60	+4	+0.9%	+9	+8
Management & Administrative	1,019	1,025	+6	+0.6%	+22	+26
General Support	866	845	-21	-2.4%	-16	-12
Patient & Client Care	6,976	7,021	+44	+0.6%	-47	+65



Social Care Services Employment by Care Group & Administration (HSE / S38): July 2020

Social Care

Jul 2020 (Dec 2019 figure: 31,535)	WTE Jun 2020	WTE Jul 2020	WTE change since Jun 20	% change since Jun 20	WTE change since Dec 19	WTE change since Jul 19
Overall	31,732	31,892	+160	+0.5%	+356	+455
HSE	3,959	3,987	+28	+0.7%	+84	+139
Section 38	14,423	14,431	+8	+0.1%	+32	+216
Disabilities	18,382	18,419	+37	+0.2%	+116	+354
HSE	12,610	12,728	+119	+0.9%	+204	+73
Section 38	740	744	+4	+0.6%	+36	+27
Older People	13,350	13,473	+123	+0.9%	+240	+101

Disabilities

Jul 2020 (Dec 2019 figure: 18,303)	WTE Jun 2020	WTE Jul 2020	WTE change since Jun 20	% change since Jun 20	WTE change since Dec 19	WTE change since Jul 19
Overall	18,382	18,419	+37	+0.2%	+116	+354
Consultants	23	22	-0	-1.3%	-2	-1
Registrars	10	10	-0	-1.1%	-3	-1
SHO/ Interns	10	9	-1	-6.7%	+2	+2
Medical/ Dental, other	15	14	-0	-2.4%	+0	-0
Medical & Dental	57	56	-1	-2.5%	-3	+0
Nurse/ Midwife Manager	896	899	+3	+0.3%	+6	+10
Nurse/ Midwife Specialist & AN/MP	64	65	+0	+0.1%	+3	+3
Staff Nurse/ Staff Midwife	2,537	2,521	-16	-0.6%	-51	-16
Public Health Nurse	6	6	-0	-0.8%	-0	+1
Pre-registration Nurse/ Midwife Intern	7	7	-0	-3.0%	-28	-63
Pre-registration Nurse Intern (COVID-19)	160	155	-5	-3.0%	+155	+155
Post-registration Nurse/ Midwife Student	4	4	-0	-1.7%	+4	+4
Nursing/ Midwifery awaiting registration	11	11			+11	+11
Nursing/ Midwifery Student	182	177	-5	-2.8%	+135	+107
Nursing/ Midwifery other	25	25	+0	+0.0%	+3	+4
Nursing & Midwifery	3,711	3,693	-18	-0.5%	+94	+108
Therapy Professions	782	782	+0	+0.0%	+18	+56
Health Science/ Diagnostics	19	19			-1	-1
Social Care	2,614	2,618	+4	+0.2%	+23	+55
Social Workers	226	221	-5	-2.0%	+2	+6
Psychologists	212	212	+0	+0.1%	+8	+6
Pharmacy	7	8	+0	+6.4%	+1	+2
H&SC, Other	83	83	+0	+0.3%	-1	-0
Health & Social Care Professionals	3,943	3,944	+1	+0.0%	+50	+123
Management (VIII & above)	188	190	+2	+1.1%	+11	+8
Administrative/ Supervisory (V to VII)	501	499	-2	-0.3%	+20	+37
Clerical (III & IV)	676	680	+4	+0.6%	+20	+34
Management & Administrative	1,365	1,369	+4	+0.3%	+51	+80
Support	729	708	-21	-2.9%	-26	-24
Maintenance/ Technical	129	130	+1	+0.7%	+6	+0
General Support	858	838	-20	-2.4%	-20	-24
Health Care Assistants	6,779	6,833	+54	+0.8%	+7	+56
Home Help	89	101	+12	+13.6%	-8	-11

Care, other	1,581	1,585	+5	+0.3%	-54	+23
Patient & Client Care	8,448	8,519	+71	+0.8%	-55	+68

Older People

Jul 2020 (Dec 2019 figure: 13,232)	WTE Jun 2020	WTE Jul 2020	WTE change since Jun 20	% change since Jun 20	WTE change since Dec 19	WTE change since Jul 19
Overall	13,350	13,473	+123	+0.9%	+240	+101
Consultants	4	5	+0	+9.5%	+1	+1
Registrars	10	9	-1	-13.3%	-1	-1
SHO/ Interns	13	12	-1	-7.7%	-3	-2
Medical/ Dental, other	85	85	-0	-0.5%	-11	-1
Medical & Dental	113	110	-2	-2.1%	-14	-3
Nurse/ Midwife Manager	732	740	+8	+1.1%	+31	+6
Nurse/ Midwife Specialist & AN/MP	33	31	-2	-5.3%	+5	+5
Staff Nurse/ Staff Midwife	2,621	2,614	-7	-0.3%	+37	+24
Public Health Nurse	13	13	+0	+1.1%	-0	+0
Post-registration Nurse/ Midwife Student	1		-1	-100.0%		
Nursing/ Midwifery awaiting registration	2	3	+1	+70.0%	+3	+3
Nursing/ Midwifery Student	3	3	+0	+2.0%	+1	+3
Nursing/ Midwifery other	3	3	+0	+1.7%	+2	+1
Nursing & Midwifery	3,404	3,404	-0	-0.0%	+76	+39
Therapy Professions	301	299	-1	-0.4%	+11	+12
Health Science/ Diagnostics	5	5	+0	+2.0%	-1	+0
Social Care	3	3				
Social Workers	97	98	+1	+1.2%	-1	-6
Psychologists	2	2				
Pharmacy	17	17	+1	+4.5%	+2	+3
H&SC, Other	1	1				
Health & Social Care Professionals	425	426	+1	+0.2%	+12	+9
Management (VIII & above)	73	74	+1	+1.5%	-1	+4
Administrative/ Supervisory (V to VII)	170	169	-1	-0.6%	+4	+8
Clerical (III & IV)	566	566	-0	-0.0%	-6	-8
Management & Administrative	809	809	+0	+0.0%	-2	+3
Support	827	837	+10	+1.3%	+8	-6
Maintenance/ Technical	98	99	+1	+0.5%	+0	-1
General Support	925	936	+11	+1.2%	+9	-7
Health Care Assistants	4,415	4,492	+76	+1.7%	+448	+341
Home Help	3,108	3,148	+39	+1.3%	-294	-284
Care, other	150	149	-1	-0.7%	+7	+2
Patient & Client Care	7,674	7,788	+114	+1.5%	+161	+60

Social Care Services Employment by CHO etc. Jul 2020

CHO 1

Jul 2020 (Dec 2019 figure: 3,334)	WTE Jun 2020	WTE Jul 2020	WTE change since Jun 20	% change since Jun 20	WTE change since Dec 19	WTE change since Jul 19
Overall	3,381	3,421	+40	+1.2%	+87	+71
Consultants				-100.0%		
Medical/ Dental, other	20	20			-12	+1
Medical & Dental	20	20			-12	+1
Nurse/ Midwife Manager	196	199	+4	+2.0%	+3	-2
Nurse/ Midwife Specialist & AN/MP	19	18	-1	-5.5%	+4	+5
Staff Nurse/ Staff Midwife	632	632	+0	+0.0%	+1	-8
Pre-registration Nurse/ Midwife Intern	7		-7	-100.0%	-11	-11
Pre-registration Nurse Intern (COVID-19)	21	27	+6	+29.8%	+27	+27
Nursing/ Midwifery awaiting registration	11	11			+11	+11
Nursing/ Midwifery Student	39	38	-1	-1.9%	+24	+27
Nursing/ Midwifery other	6	6	+0	+0.9%	+1	+1
Nursing & Midwifery	891	893	+2	+0.3%	+33	+23
Therapy Professions	56	56	-0	-0.4%	+3	+6
Health Science/ Diagnostics	1	1	+0	+6.0%	-0	-0
Social Care	9	9	+0	+0.8%	+1	+0
Social Workers	36	36	-0	-0.4%	+3	+6
Psychologists	6	6	+0	+1.2%	+1	+1
H&SC, Other	9	10	+1	+9.2%	-3	-3
Health & Social Care Professionals	117	117	+1	+0.5%	+5	+10
Management (VIII & above)	23	23			+1	+1
Administrative/ Supervisory (V to VII)	49	48	-1	-2.2%	+6	+8
Clerical (III & IV)	128	132	+4	+3.5%	-3	+2
Management & Administrative	200	203	+3	+1.7%	+4	+11
Support	169	169	+1	+0.3%	-3	-7
Maintenance/ Technical	13	13				-1
General Support	182	182	+1	+0.3%	-3	-8
Health Care Assistants	1,380	1,405	+26	+1.8%	+80	+72
Home Help	528	534	+6	+1.1%	-22	-38
Care, other	65	66	+2	+2.4%	+2	+1
Patient & Client Care	1,972	2,005	+33	+1.7%	+60	+35

CHO 2

Jul 2020 (Dec 2019 figure: 3,103)	WTE Jun 2020	WTE Jul 2020	WTE change since Jun 20	% change since Jun 20	WTE change since Dec 19	WTE change since Jul 19
Overall	3,059	3,077	+18	+0.6%	-26	+42
Consultants	4	3	-0	-2.9%		
Registrars	2	2	+0	+10.0%	+0	+0
Medical/ Dental, other	12	11	-0	-3.7%	-1	-1
Medical & Dental	17	17	-0	-1.9%	-1	-1
Nurse/ Midwife Manager	143	142	-1	-0.9%	+6	+10
Nurse/ Midwife Specialist & AN/MP	8	7	-1	-12.5%	-1	+0
Staff Nurse/ Staff Midwife	464	462	-2	-0.5%	-5	-5
Public Health Nurse	1	1			+0	
<i>Pre-registration Nurse Intern (COVID-19)</i>		1	+1	-100.0%	+1	+1
Nursing/ Midwifery Student		1	+1	-100.0%	+1	+1
Nursing & Midwifery	616	613	-3	-0.6%	+2	+6
Therapy Professions	60	60	-0	-0.3%	-7	-7
Health Science/ Diagnostics	1	1				
Social Care	240	239	-0	-0.1%	+17	+20
Social Workers	36	36	+0	+1.0%	-0	-0
Psychologists	15	14	-1	-6.9%	-1	-2
Pharmacy	1	1				+0
H&SC, Other	14	13	-1	-5.1%	-2	-3
Health & Social Care Professionals	366	364	-2	-0.5%	+6	+8
Management (VIII & above)	16	17	+1	+6.4%	-1	-1
Administrative/ Supervisory (V to VII)	48	49	+0	+0.7%	+1	+2
Clerical (III & IV)	118	114	-4	-3.1%	-7	-11
Management & Administrative	182	180	-2	-1.2%	-8	-11
Support	96	91	-4	-4.5%	-9	-14
Maintenance/ Technical	32	33	+0	+1.2%	+1	+0
General Support	128	124	-4	-3.1%	-9	-14
Health Care Assistants	1,179	1,204	+26	+2.2%	+66	+64
Home Help	420	418	-2	-0.5%	-81	-18
Care, other	151	157	+6	+4.2%	-2	+6
Patient & Client Care	1,749	1,779	+30	+1.7%	-17	+53

CHO 3

Jul 2020 (Dec 2019 figure: 2,798)	WTE Jun 2020	WTE Jul 2020	WTE change since Jun 20	% change since Jun 20	WTE change since Dec 19	WTE change since Jul 19
Overall	2,939	2,948	+9	+0.3%	+150	+139
Consultants	2	3	+1	+30.0%	+1	-0
Medical/ Dental, other	6	6				
Medical & Dental	8	9	+1	+7.6%	+1	-0
Nurse/ Midwife Manager	143	142	-1	-0.6%	+2	+7
Nurse/ Midwife Specialist & AN/MP	13	13	-0	-0.4%	-2	+0
Staff Nurse/ Staff Midwife	481	479	-2	-0.5%	-7	-19
Public Health Nursing	1	1			+1	+1
Public Health Nurse	1	1				+1
Pre-registration Nurse/ Midwife Intern				-100.0%	-7	-6
Pre-registration Nurse Intern (COVID-19)	24	24	-0	-0.5%	+24	+24
Nursing/ Midwifery Student	24	24	-0	-0.5%	+12	+18
Nursing/ Midwifery other	4	4				
Nursing & Midwifery	666	663	-3	-0.5%	+6	+7
Therapy Professions	104	105	+1	+0.9%	+3	+6
Health Science/ Diagnostics	2	2	+0	+1.6%	+1	+1
Social Care	253	260	+8	+3.0%	+19	+13
Social Workers	22	21	-1	-5.3%	-3	-5
Psychologists	21	22	+1	+4.9%	+6	+5
Pharmacy	1	1				
H&SC, Other	12	12	-0	-0.1%	+0	-0
Health & Social Care Professionals	415	423	+8	+2.0%	+27	+19
Management (VIII & above)	13	13	-0	-1.0%	+0	+1
Administrative/ Supervisory (V to VII)	62	62	+0	+0.3%	+1	+4
Clerical (III & IV)	111	110	-0	-0.4%	+1	+4
Management & Administrative	185	185	-0	-0.2%	+2	+9
Support	116	117	+1	+0.9%	+0	-4
Maintenance/ Technical	38	40	+2	+5.7%	+3	+4
General Support	154	157	+3	+2.0%	+4	-0
Health Care Assistants	1,106	1,106	+0	+0.0%	+63	+61
Home Help	219	218	-1	-0.6%	+43	+33
Care, other	186	187	+1	+0.8%	+4	+9
Patient & Client Care	1,511	1,512	+0	+0.0%	+110	+103

CHO 4

Jul 2020 (Dec 2019 figure: 5,358)	WTE Jun 2020	WTE Jul 2020	WTE change since Jun 20	% change since Jun 20	WTE change since Dec 19	WTE change since Jul 19
Overall	5,360	5,363	+3	+0.1%	+5	-34
Consultants	3	3				
Registrars	3	3				+1
SHO/ Interns				-100.0%	-1	-1
Medical/ Dental, other	24	24	-0	-0.2%	+2	+2
Medical & Dental	29	29	-0	-0.2%	+1	+2
Nurse/ Midwife Manager	212	215	+3	+1.4%	+9	-3
Nurse/ Midwife Specialist & AN/MP	19	19	+1	+4.1%	+3	+2
Staff Nurse/ Staff Midwife	836	831	-5	-0.6%	+8	-7
Public Health Nurse	5	5				-0
<i>Pre-registration Nurse/ Midwife Intern</i>				-100.0%	-8	-11
<i>Pre-registration Nurse Intern (COVID-19)</i>	27	27			+27	+27
<i>Post-registration Nurse/ Midwife Student</i>	1		-1	-100.0%		
<i>Nursing/ Midwifery awaiting registration</i>				-100.0%		
Nursing/ Midwifery Student	28	27	-1	-3.5%	+18	+17
Nursing/ Midwifery other	1	1				
Nursing & Midwifery	1,102	1,099	-2	-0.2%	+37	+9
Therapy Professions	151	150	-1	-0.6%	-2	-2
Health Science/ Diagnostics	1	1			+0	+0
Social Care	230	231	+1	+0.4%	+2	+5
Social Workers	36	35	-1	-2.3%	-2	-0
Psychologists	34	33	-0	-0.3%	-1	-0
Pharmacy	4	4	+0	+5.3%	+1	+1
H&SC, Other	10	11	+1	+12.8%	+2	+3
Health & Social Care Professionals	465	465	+0	+0.1%	+0	+7
Management (VIII & above)	37	37			+2	+4
Administrative/ Supervisory (V to VII)	73	73	-0	-0.2%	+2	+6
Clerical (III & IV)	218	218	+0	+0.2%	+6	-1
Management & Administrative	328	328	+0	+0.1%	+10	+9
Support	253	259	+7	+2.7%	+18	+19
Maintenance/ Technical	16	16				-1
General Support	269	276	+7	+2.5%	+18	+18
Health Care Assistants	1,859	1,879	+19	+1.0%	+102	+49
Home Help	980	957	-23	-2.4%	-157	-136
Care, other	329	331	+2	+0.5%	-7	+9
Patient & Client Care	3,168	3,166	-2	-0.1%	-62	-78

CHO 5

Jul 2020 (Dec 2019 figure: 3,152)	WTE Jun 2020	WTE Jul 2020	WTE change since Jun 20	% change since Jun 20	WTE change since Dec 19	WTE change since Jul 19
Overall	3,087	3,192	+105	+3.4%	+39	+48
Consultants	1		-1	-100.0%	-1	-1
Medical/ Dental, other	9	9	+0	+0.3%	-1	-2
Medical & Dental	10	9	-1	-9.1%	-2	-3
Nurse/ Midwife Manager	151	153	+2	+1.2%	+5	+1
Nurse/ Midwife Specialist & AN/MP	4	5	+1	+26.2%	+1	+1
Staff Nurse/ Staff Midwife	485	480	-4	-0.9%	-5	+22
Public Health Nurse	9	9	+0	+0.6%	-0	+1
<i>Pre-registration Nurse/ Midwife Intern</i>				-100.0%		-11
<i>Pre-registration Nurse Intern (COVID-19)</i>	12	7	-4	-35.6%	+7	+7
<i>Post-registration Nurse/ Midwife Student</i>	4	4	-0	-1.7%	+4	+4
<i>Nursing/ Midwifery awaiting registration</i>				-100.0%		
Nursing/ Midwifery Student	16	11	-4	-26.9%	+10	+1
Nursing & Midwifery	664	659	-5	-0.8%	+11	+25
Therapy Professions	101	99	-3	-2.5%	-5	+1
Social Care	139	140	+1	+0.6%	-14	-16
Social Workers	28	26	-2	-5.5%	+2	+1
Psychologists	13	13	+1	+5.6%	-1	+1
<i>Pharmacy</i>	1	1			+1	+1
Pharmacy	1	1			+1	+1
H&SC, Other	7	8	+1	+14.8%	+1	+1
Health & Social Care Professionals	288	286	-2	-0.5%	-16	-11
Management (VIII & above)	16	15	-1	-4.4%	+0	+2
Administrative/ Supervisory (V to VII)	55	53	-2	-3.0%	+0	+3
Clerical (III & IV)	90	89	-1	-1.5%	-4	-1
Management & Administrative	160	157	-4	-2.3%	-3	+4
Support	131	131	-0	-0.3%	-8	-14
Maintenance/ Technical	15	15	+0	+0.9%	-0	-3
General Support	146	146	-0	-0.1%	-8	-17
Health Care Assistants	1,137	1,186	+49	+4.3%	+125	+135
Home Help	527	597	+71	+13.4%	-64	-101
Care, other	154	151	-3	-2.0%	-3	+15
Patient & Client Care	1,818	1,935	+117	+6.4%	+58	+50

CHO 6

Jul 2020 (Dec 2019 figure: 2,021)	WTE Jun 2020	WTE Jul 2020	WTE change since Jun 20	% change since Jun 20	WTE change since Dec 19	WTE change since Jul 19
Overall	2,012	2,013	+1	+0.1%	-8	+9
Consultants	3	3				
Registrars	1	1				
Medical/ Dental, other	5	5				
Medical & Dental	9	9				
Nurse/ Midwife Manager	111	111	+0	+0.1%	-1	-5
Nurse/ Midwife Specialist & AN/MP	1	1				
Staff Nurse/ Staff Midwife	344	339	-6	-1.7%	-12	-11
Nursing & Midwifery	456	450	-6	-1.2%	-13	-16
Therapy Professions	85	84	-1	-0.6%	-7	+4
Social Care	318	320	+2	+0.7%	-15	-13
Social Workers	20	21	+0	+2.4%	-2	-3
Psychologists	17	17	+0	+1.7%	+1	-1
Pharmacy	3	3	+0	+2.1%	+0	+0
H&SC, Other	1	1	+0	+5.2%	-1	+0
Health & Social Care Professionals	443	446	+3	+0.6%	-23	-13
Management (VIII & above)	35	36	+1	+3.5%	+1	-1
Administrative/ Supervisory (V to VII)	76	75	-1	-1.5%	-0	+1
Clerical (III & IV)	93	97	+4	+4.1%	+14	+11
Management & Administrative	204	208	+4	+1.9%	+15	+11
Support	145	151	+6	+4.4%	+21	+15
Maintenance/ Technical	17	16	-1	-7.2%	+1	+4
General Support	162	167	+5	+3.2%	+22	+20
Health Care Assistants	503	502	-1	-0.2%	+15	+22
Care, other	234	230	-4	-1.6%	-23	-15
Patient & Client Care	737	732	-5	-0.7%	-8	+7

CHO 7

Jul 2020 (Dec 2019 figure: 3,978)	WTE Jun 2020	WTE Jul 2020	WTE change since Jun 20	% change since Jun 20	WTE change since Dec 19	WTE change since Jul 19
Overall	3,994	4,042	+48	+1.2%	+65	+81
Consultants	1	1				
Registrars	3	3				+1
SHO/ Interns	10	9	-0	-4.9%	+0	+0
Medical/ Dental, other	5	5				-1
Medical & Dental	18	18	-0	-2.7%	+0	-0
Nurse/ Midwife Manager	198	205	+7	+3.6%	+5	-0
Nurse/ Midwife Specialist & AN/MP	8	7	-1	-14.9%	-1	-2
Staff Nurse/ Staff Midwife	617	619	+2	+0.4%	+26	+33
<i>Pre-registration Nurse/ Midwife Intern</i>				-100.0%		-7
<i>Pre-registration Nurse Intern (COVID-19)</i>	15	15			+15	+15
<i>Nursing/ Midwifery awaiting registration</i>	2	3	+1	+70.0%	+3	+3
Nursing/ Midwifery Student	17	18	+1	+6.4%	+18	+11
Nursing/ Midwifery other	1	1				
Nursing & Midwifery	840	849	+9	+1.1%	+48	+41
Therapy Professions	154	156	+2	+1.2%	+20	+23
Health Science/ Diagnostics	3	3				
Social Care	353	362	+9	+2.5%	+2	+6
Social Workers	47	47	+0	+0.5%	+3	+1
Psychologists	29	30	+0	+1.6%	+2	+0
Pharmacy	8	9	+0	+5.7%	+2	+2
H&SC, Other	4	3	-2	-43.9%		
Health & Social Care Professionals	599	609	+10	+1.6%	+28	+32
Management (VIII & above)	45	44	-1	-2.4%	+7	+7
Administrative/ Supervisory (V to VII)	97	98	+1	+0.6%	+7	+5
Clerical (III & IV)	132	133	+1	+0.9%	+7	+14
Management & Administrative	274	274	+1	+0.2%	+21	+25
Support	266	272	+6	+2.2%	-5	-11
Maintenance/ Technical	32	32			+1	-1
General Support	298	303	+6	+1.9%	-4	-12
Health Care Assistants	1,452	1,476	+24	+1.6%	-24	-21
Home Help	133	134	+1	+0.5%	+7	+10
Care, other	380	379	-1	-0.4%	-12	+6
Patient & Client Care	1,966	1,989	+23	+1.2%	-29	-5

CHO 8

Jul 2020 (Dec 2019 figure: 3,650)	WTE Jun 2020	WTE Jul 2020	WTE change since Jun 20	% change since Jun 20	WTE change since Dec 19	WTE change since Jul 19
Overall	3,695	3,662	-33	-0.9%	+12	-7
Consultants	1	1				
Registrars	1	2	+1	+81.0%	-0	+1
Medical/ Dental, other	12	12			+0	-0
Medical & Dental	14	15	+1	+5.8%	-0	+1
Nurse/ Midwife Manager	200	200	-1	-0.3%	-0	-2
Nurse/ Midwife Specialist & AN/MP	10	10	-0	-1.0%	+1	+0
Staff Nurse/ Staff Midwife	570	561	-9	-1.6%	-7	-1
Public Health Nurse	3	3	+0	+1.5%	+0	-0
<i>Pre-registration Nurse/ Midwife Intern</i>				-100.0%	-1	-12
<i>Pre-registration Nurse Intern (COVID-19)</i>	30	30	-0	-0.6%	+30	+30
Nursing/ Midwifery Student	30	30	-0	-0.6%	+30	+18
Nursing/ Midwifery other	8	8			+3	+2
Nursing & Midwifery	822	812	-10	-1.2%	+26	+16
Therapy Professions	113	112	-1	-1.0%	+0	+7
Health Science/ Diagnostics	2	2				
Social Care	373	366	-7	-1.9%	+5	+5
Social Workers	29	29	-0	-0.2%	-1	+0
Psychologists	22	20	-2	-8.9%	-5	-4
Pharmacy	2	2			-1	-1
H&SC, Other	7	7	-0	-1.6%	-0	+0
Health & Social Care Professionals	548	538	-10	-1.9%	-2	+9
Management (VIII & above)	17	19	+2	+11.2%	+5	+3
Administrative/ Supervisory (V to VII)	80	79	-1	-1.4%	+2	+7
Clerical (III & IV)	160	159	-1	-0.5%	+5	+5
Management & Administrative	257	257	-0	-0.0%	+12	+16
Support	73	70	-3	-4.1%	-2	-4
Maintenance/ Technical	40	40			-0	-0
General Support	113	110	-3	-2.6%	-3	-4
Health Care Assistants	1,420	1,409	-11	-0.8%	+9	+4
Home Help	390	391	+1	+0.2%	-27	-45
Care, other	132	132	-1	-0.4%	-4	-2
Patient & Client Care	1,942	1,931	-11	-0.6%	-22	-44

CHO 9

Jul 2020 (Dec 2019 figure: 4,064)	WTE Jun 2020	WTE Jul 2020	WTE change since Jun 20	% change since Jun 20	WTE change since Dec 19	WTE change since Jul 19
Overall	4,133	4,102	-31	-0.7%	+39	+108
Consultants	13	14	+1	+4.1%	-0	+1
Registrars	10	7	-2	-25.4%	-4	-4
SHO/ Interns	13	12	-1	-9.0%	-0	+1
Medical/ Dental, other	8	7	-0	-4.7%		
Medical & Dental	44	40	-3	-7.9%	-5	-2
Nurse/ Midwife Manager	275	273	-2	-0.7%	+7	+9
Nurse/ Midwife Specialist & AN/MP	15	15			+2	+2
Staff Nurse/ Staff Midwife	728	731	+3	+0.4%	-13	+5
Public Health Nurse				-100.0%	-0	-0
Pre-registration Nurse/ Midwife Intern		7	+7	-100.0%	-2	-5
Pre-registration Nurse Intern (COVID-19)	31	23	-8	-24.7%	+23	+23
Nursing/ Midwifery Student	31	30	-1	-2.8%	+22	+18
Nursing/ Midwifery other	9	9			+1	+2
Nursing & Midwifery	1,059	1,059	+0	+0.0%	+19	+36
Therapy Professions	257	259	+2	+0.7%	+24	+31
Health Science/ Diagnostics	14	14			-2	-3
Social Care	703	695	-9	-1.2%	+5	+34
Social Workers	69	68	-1	-1.1%	+3	+1
Psychologists	59	59	+1	+1.1%	+6	+6
Pharmacy	5	6	+1	+10.0%	+1	+1
H&SC, Other	20	20	-0	-0.0%	+1	+1
Health & Social Care Professionals	1,127	1,121	-6	-0.6%	+37	+70
Management (VIII & above)	44	44			-3	-2
Administrative/ Supervisory (V to VII)	106	108	+2	+1.6%	+5	+7
Clerical (III & IV)	163	164	+1	+0.5%	-2	+6
Management & Administrative	313	315	+3	+0.8%	+1	+10
Support	308	285	-24	-7.7%	-29	-12
Maintenance/ Technical	24	24	+0	+0.0%	-0	-3
General Support	333	309	-24	-7.1%	-29	-14
Health Care Assistants	1,158	1,157	-1	-0.1%	+19	+10
Care, other	100	101	+1	+1.3%	-2	-3
Patient & Client Care	1,258	1,258	+0	+0.0%	+16	+7

other Community Services

Jul 2020 (Dec 2019 figure: 78)	WTE Jun 2020	WTE Jul 2020	WTE change since Jun 20	% change since Jun 20	WTE change since Dec 19	WTE change since Jul 19
Overall	72	72	+0	+0.4%	-6	-2
Health Science/ Diagnostics				-100.0%	-1	
Health & Social Care Professionals				-100.0%	-1	
Management (VIII & above)	17	18	+1	+6.2%	-2	-2
Administrative/ Supervisory (V to VII)	25	25	-0	-1.1%	+0	+2
Clerical (III & IV)	30	29	-1	-1.7%	-4	-3
Management & Administrative	71	72	+0	+0.4%	-6	-2
Health Care Assistants	0	0			+0	
Patient & Client Care	0	0			+0	

Social Care Services Employment by CHO & Admin : Jul 2020

Jul 2020 (Dec 2019 figure: 31,535)	WTE Jun 2020	WTE Jul 2020	WTE change since Jun 20	% change since Jun 20	WTE change since Dec 19	WTE change since Jul 19
Overall	31,732	31,892	+160	+0.5%	+356	+455
CHO 1	3,381	3,421	+40	+1.2%	+87	+71
Health Service Executive	1,795	1,811	+16	+0.9%	-3	+24
Bros. of Charity, West Region	1,263	1,265	+2	+0.2%	-23	+18
Section 38 Voluntary Agencies	1,263	1,265	+2	+0.2%	-23	+18
CHO 2	3,059	3,077	+18	+0.6%	-26	+42
Health Service Executive	1,179	1,187	+8	+0.6%	+91	+74
Bros. of Charity, Clare	336	341	+5	+1.6%	-7	+7
Bros. of Charity, Limerick	564	575	+11	+2.0%	+55	+55
Daughters of Charity, Limerick	571	556	-16	-2.8%	+12	+5
Daughters of Charity, Roscrea	289	289	+0	+0.1%	-1	-2
Section 38 Voluntary Agencies	1,760	1,761	+1	+0.1%	+60	+65
CHO 3	2,939	2,948	+9	+0.3%	+150	+139
Health Service Executive	3,186	3,170	-17	-0.5%	-42	-54
Bros. of Charity, Southern	735	756	+21	+2.8%	+15	-1
Cope Foundation	1,125	1,124	-1	-0.1%	+34	+15
St. John of God, Kerry	313	313	-0	-0.1%	-2	+6
Section 38 Voluntary Agencies	2,173	2,193	+19	+0.9%	+47	+20
CHO 4	5,360	5,363	+3	+0.1%	+5	-34
Health Service Executive	1,980	2,060	+80	+4.0%	+31	+27
Bros. of Charity, Waterford	612	636	+24	+4.0%	+6	+24
Carriglea Cairde Services	210	207	-3	-1.2%	-7	-2
St. Patrick's, Kilkenny	285	288	+3	+1.1%	+9	-1
Section 38 Voluntary Agencies	1,107	1,132	+25	+2.2%	+8	+21
CHO 5	3,087	3,192	+105	+3.4%	+39	+48
Health Service Executive	601	596	-5	-0.9%	+21	+32
Children's Sunshine Home	57	56	-0	-0.9%	-2	-3
Leopardstown Park Hospital	205	204	-1	-0.7%	-7	-5
Royal Hospital, Donnybrook, Dublin	277	277	-0	-0.0%	+5	-6
St. John of God (IDS)	444	448	+4	+0.8%	-9	-3
Sunbeam House Services	428	433	+5	+1.1%	-16	-5
Section 38 Voluntary Agencies	1,411	1,417	+7	+0.5%	-29	-22
CHO 6	2,012	2,013	+1	+0.1%	-8	+9
Health Service Executive	1,142	1,157	+15	+1.3%	+61	+54
Section 38 Voluntary Agencies	2,853	2,885	+33	+1.1%	+4	+27
CHO 7	3,994	4,042	+48	+1.2%	+65	+81
Health Service Executive	2,114	2,113	-1	-0.1%	+14	-12
Section 38 Voluntary Agencies	1,581	1,549	-32	-2.0%	-2	+6
CHO 8	3,695	3,662	-33	-0.9%	+12	-7
Health Service Executive	1,118	1,129	+11	+1.0%	+34	-2
Central Remedial Clinic	283	283	+0	+0.0%	+5	+7
Daughters of Charity, Dublin	1,071	1,050	-21	-1.9%	+16	+44
Incorporated Orthopaedic Hospital	258	264	+6	+2.3%	+38	+39
St. Michael's House, Dublin	1,403	1,376	-27	-1.9%	-55	+21

Jul 2020 (Dec 2019 figure: 31,535)	WTE Jun 2020	WTE Jul 2020	WTE change since Jun 20	% change since Jun 20	WTE change since Dec 19	WTE change since Jul 19
Overall	31,732	31,892	+160	+0.5%	+356	+455
Section 38 Voluntary Agencies	3,015	2,973	-42	-1.4%	+4	+110
CHO 9	4,133	4,102	-31	-0.7%	+39	+108
other Community Services	72	72	+0	+0.4%	-6	-2

Disability Services Employment by CHO & Admin: Jul 2020

Jul 2020 (Dec 2019 figure: 18,303)	WTE Jun 2020	WTE Jul 2020	WTE change since Jun 20	% change since Jun 20	WTE change since Dec 19	WTE change since Jul 19
Overall	18,382	18,419	+37	+0.2%	+116	+354
CHO 1	1,526	1,536	+10	+0.7%	+37	+39
Health Service Executive	211	213	+2	+1.1%	+5	-0
Bros. of Charity, West Region	1,263	1,265	+2	+0.2%	-23	+18
Section 38 Voluntary Agencies	1,263	1,265	+2	+0.2%	-23	+18
CHO 2	1,474	1,479	+4	+0.3%	-18	+17
Health Service Executive	132	138	+7	+5.1%	+16	+18
Bros. of Charity, Clare	336	341	+5	+1.6%	-7	+7
Bros. of Charity, Limerick	564	575	+11	+2.0%	+55	+55
Daughters of Charity, Limerick	571	556	-16	-2.8%	+12	+5
Daughters of Charity, Roscrea	289	289	+0	+0.1%	-1	-2
Section 38 Voluntary Agencies	1,760	1,761	+1	+0.1%	+60	+65
CHO 3	1,891	1,899	+8	+0.4%	+76	+83
Health Service Executive	301	302	+1	+0.4%	+10	+13
Bros. of Charity, Southern	735	756	+21	+2.8%	+15	-1
Cope Foundation	1,126	1,124	-1	-0.1%	+34	+15
St. John of God, Kerry	313	313	-0	-0.1%	-2	+6
Section 38 Voluntary Agencies	2,173	2,193	+19	+0.9%	+47	+20
CHO 4	2,475	2,495	+21	+0.8%	+57	+33
Health Service Executive	371	373	+2	+0.6%	-8	+27
Bros. of Charity, Waterford	612	636	+24	+4.0%	+6	+24
Carriglea Cairde Services	210	207	-3	-1.2%	-7	-2
St. Patrick's, Kilkenny	285	288	+3	+1.1%	+9	-1
Section 38 Voluntary Agencies	1,107	1,132	+25	+2.2%	+8	+21
CHO 5	1,478	1,505	+27	+1.8%	-0	+48
Health Service Executive	234	235	+1	+0.6%	+2	+8
Children's Sunshine Home	57	56	-1	-0.9%	-2	-3
St. John of God (IDS)	444	448	+4	+0.8%	-9	-3
Sunbeam House Services	428	433	+5	+1.1%	-16	-5
Section 38 Voluntary Agencies	929	937	+8	+0.9%	-28	-11
CHO 6	1,163	1,172	+9	+0.8%	-26	-3
Health Service Executive	120	123	+3	+2.6%	+23	+34
Cheeverstown House	393	395	+1	+0.3%	-2	-6
Kare, Newbridge, Co Kildare	345	335	-10	-3.0%	-25	-7
Peamount Hospital (Newcastle)	510	526	+16	+3.1%	+39	+36
Stewart's Hospital, (Palmerstown)	866	863	-4	-0.4%	+11	-14
St. John of God Liffey Services	738	768	+29	+4.0%	-20	+18
Section 38 Voluntary Agencies	2,853	2,885	+33	+1.1%	+4	+27
CHO 7	2,973	3,009	+36	+1.2%	+27	+61
Health Service Executive	605	603	-2	-0.3%	-7	+3
Muiriosa Foundation, Laois/Offaly	295	291	-4	-1.5%	-11	-9
Muiriosa Foundation, Longford/Westmeath	275	269	-6	-2.0%	-1	-1
Muiriosa Foundation, South Kildare	355	344	-10	-2.9%	+11	+9
St. John of God, Drumcar	657	645	-12	-1.8%	-1	+7

Jul 2020 (Dec 2019 figure: 18,303)	WTE Jun 2020	WTE Jul 2020	WTE change since Jun 20	% change since Jun 20	WTE change since Dec 19	WTE change since Jul 19
Overall	18,382	18,419	+37	+0.2%	+116	+354
Section 38 Voluntary Agencies	1,581	1,549	-32	-2.0%	-2	+6
CHO 8	2,186	2,153	-34	-1.5%	-9	+9
Health Service Executive	454	457	+3	+0.7%	+7	-3
Central Remedial Clinic	283	283	+0	+0.0%	+5	+7
Daughters of Charity, Dublin	1,071	1,050	-21	-1.9%	+16	+44
St. Michael's House, Dublin	1,403	1,376	-27	-1.9%	-55	+21
Section 38 Voluntary Agencies	2,757	2,709	-48	-1.7%	-34	+71
CHO 9	3,211	3,167	-45	-1.4%	-27	+68
other Community Services	5	5	-0	-0.2%	-0	+0

Older Persons Services Employment by CHO & Admin: Jul 2020

Jul 2020 (Dec 2019 figure: 13,232)	WTE Jun 2020	WTE Jul 2020	WTE change since Jun 20	% change since Jun 20	WTE change since Dec 19	WTE change since Jul 19
Overall	13,350	13,473	+123	+0.9%	+240	+101
CHO 1	1,856	1,885	+30	+1.6%	+50	+33
CHO 2	1,584	1,598	+14	+0.9%	-8	+25
CHO 3	1,048	1,048	+1	+0.1%	+74	+56
CHO 4	2,885	2,867	-18	-0.6%	-52	-67
CHO 5	1,609	1,687	+78	+4.8%	+40	-0
Health Service Executive	367	360	-7	-1.8%	+19	+24
Leopardstown Park Hospital	205	204	-1	-0.7%	-7	-5
Royal Hospital, Donnybrook, Dublin	277	277			+5	-6
Section 38 Voluntary Agencies	482	481	-1	-0.3%	-2	-12
CHO 6	849	841	-8	-1.0%	+17	+12
CHO 7	1,022	1,034	+12	+1.2%	+38	+20
CHO 8	1,509	1,510	+1	+0.0%	+21	-15
Health Service Executive	664	672	+8	+1.2%	+28	+1
Incorporated Orthopaedic Hospital	258	264	+6	+2.3%	+38	+39
Section 38 Voluntary Agencies	258	264	+6	+2.3%	+38	+39
CHO 9	922	936	+14	+1.5%	+66	+40
other Community Services	67	67	+0	+0.4%	-6	-2

Social Care Services Employment by CHO etc. Jul 2020

Bros. of Charity, Clare

Jul 2020 (Dec 2019 figure: 348)	WTE Jun 2020	WTE Jul 2020	WTE change since Jun 20	% change since Jun 20	WTE change since Dec 19	WTE change since Jul 19
Overall	336	341	+5	+1.6%	-7	+7
Consultants		0	+0	-100.0%	+0	+0
Medical & Dental		0	+0	-100.0%	+0	+0
Nurse/ Midwife Manager				-100.0%		
Staff Nurse/ Staff Midwife	2	2	-0	-2.1%	+0	+0
<i>Pre-registration Nurse Intern (COVID-19)</i>	1	1	-0	-11.7%	+1	+1
Nursing/ Midwifery Student	1	1	-0	-11.7%	+1	+1
Nursing & Midwifery	3	3	-0	-5.2%	+1	+1
Social Care	79	81	+2	+2.5%	-1	-8
Social Workers	1	1			-2	-2
Psychologists	3	3				
H&SC, Other	4	4			-0	-1
Health & Social Care Professionals	86	88	+2	+2.3%	-4	-11
Management (VIII & above)	1	1				
Administrative/ Supervisory (V to VII)	5	5	-0	-2.0%	+0	+0
Clerical (III & IV)	5	5			+1	+1
Management & Administrative	11	11	-0	-0.9%	+1	+1
Health Care Assistants	204	208	+4	+1.8%	-4	+14
Care, other	32	31	-0	-0.9%	-1	+2
Patient & Client Care	236	239	+4	+1.5%	-5	+15

Jul 2020 (Dec 2019 figure: 520)	WTE Jun 2020	WTE Jul 2020	WTE change since Jun 20	% change since Jun 20	WTE change since Dec 19	WTE change since Jul 19
Overall	564	575	+11	+2.0%	+55	+55
Consultants	1	2	+1	+50.0%	+1	-0
Medical & Dental	1	2	+1	+50.0%	+1	-0
Nurse/ Midwife Manager	30	28	-2	-5.3%	+3	+5
Nurse/ Midwife Specialist & AN/MP	4	4			-1	+1
Staff Nurse/ Staff Midwife	88	88	+0	+0.2%	+4	+3
Nursing & Midwifery	121	120	-1	-1.2%	+6	+9
Therapy Professions	15	15			+3	+3
Social Care	93	98	+5	+5.3%	+13	+15
Social Workers	5	4	-1	-17.2%	-1	-2
Psychologists	6	6			+0	+0
H&SC, Other	2	2	-0	-0.6%	+1	+1
Health & Social Care Professionals	120	124	+4	+3.4%	+16	+18
Management (VIII & above)	2	2				
Administrative/ Supervisory (V to VII)	6	6	+0	+1.9%	+0	-0
Clerical (III & IV)	11	11	-0	-0.4%	-2	-2
Management & Administrative	18	19	+0	+0.4%	-2	-2
Support	5	5	+0	+0.4%	-2	-3
Maintenance/ Technical	2	2			-0	-0
General Support	7	7	+0	+0.3%	-2	-3
Health Care Assistants	205	210	+5	+2.4%	+31	+26
Care, other	90	93	+3	+3.4%	+5	+8
Patient & Client Care	295	303	+8	+2.7%	+36	+34

Jul 2020 (Dec 2019 figure: 740)	WTE Jun 2020	WTE Jul 2020	WTE change since Jun 20	% change since Jun 20	WTE change since Dec 19	WTE change since Jul 19
Overall	735	756	+21	+2.8%	+15	-1
Nurse/ Midwife Manager	16	15	-0	-2.9%	-0	-2
Nurse/ Midwife Specialist & AN/MP	3	4	+1	+34.0%	+1	+1
Staff Nurse/ Staff Midwife	59	56	-2	-4.2%	-3	-6
Nursing & Midwifery	77	75	-2	-2.5%	-2	-7
Therapy Professions	45	46	+1	+1.3%	-2	-1
Social Care	126	126	-0	-0.0%	+2	+2
Social Workers	17	17			-1	+0
Psychologists	19	18	-0	-0.5%	-1	-1
Health & Social Care Professionals	207	207	+0	+0.2%	-2	+0
Management (VIII & above)	8	8			+0	+0
Administrative/ Supervisory (V to VII)	10	10			+1	
Clerical (III & IV)	34	35	+1	+3.3%	+2	-3
Management & Administrative	53	54	+1	+2.1%	+4	-2
Support	15	16	+1	+9.1%	+2	+1
Maintenance/ Technical	2	2				-1
General Support	16	18	+1	+8.3%	+2	+0
Health Care Assistants	207	222	+15	+7.1%	+15	+1
Care, other	175	180	+5	+2.9%	-1	+8
Patient & Client Care	382	402	+20	+5.2%	+14	+9

Jul 2020 (Dec 2019 figure: 630)	WTE Jun 2020	WTE Jul 2020	WTE change since Jun 20	% change since Jun 20	WTE change since Dec 19	WTE change since Jul 19
Overall	612	636	+24	+4.0%	+6	+24
Consultants	1		-1	-100.0%	-1	-1
Medical & Dental	1		-1	-100.0%	-1	-1
Nurse/ Midwife Manager	23	22	-1	-4.7%	-3	-2
Staff Nurse/ Staff Midwife	47	47	-0	-0.2%	-1	+7
Pre-registration Nurse/ Midwife Intern				-100.0%		-6
Pre-registration Nurse Intern (COVID-19)	8	7	-0	-1.5%	+7	+7
Nursing/ Midwifery Student	8	7	-0	-1.5%	+7	+2
Nursing & Midwifery	77	76	-1	-1.6%	+3	+6
Therapy Professions	3	3				
Social Care	67	67	+0	+0.6%	+1	-0
Social Workers	9	9	-1	-5.5%	-1	+0
Psychologists	4	4			-0	+0
H&SC, Other	4	5	+1	+26.3%	+1	+1
Health & Social Care Professionals	86	87	+1	+1.0%	+0	+1
Management (VIII & above)	5	5			+0	+1
Administrative/ Supervisory (V to VII)	16	16	-0	-1.4%	+3	+4
Clerical (III & IV)	24	24	+1	+3.5%	-1	-1
Management & Administrative	45	45	+1	+1.3%	+2	+5
Support	1	1	-0	-17.5%	-0	-0
Maintenance/ Technical	3	3				
General Support	4	4	-0	-5.7%	-0	-0
Health Care Assistants	308	333	+25	+8.1%	+2	-2
Care, other	91	92	+0	+0.4%	+1	+15
Patient & Client Care	399	424	+25	+6.3%	+2	+13

Jul 2020 (Dec 2019 figure: 214)	WTE Jun 2020	WTE Jul 2020	WTE change since Jun 20	% change since Jun 20	WTE change since Dec 19	WTE change since Jul 19
Overall	210	207	-3	-1.2%	-7	-2
Nurse/ Midwife Manager	13	13	+0	+0.4%	+1	+0
Staff Nurse/ Staff Midwife	25	24	-0	-1.8%	-2	+0
<i>Pre-registration Nurse/ Midwife Intern</i>				-100.0%		-2
<i>Post-registration Nurse/ Midwife Student</i>	4	4	-0	-1.7%	+4	+4
Nursing/ Midwifery Student	4	4	-0	-1.7%	+4	+2
Nursing & Midwifery	41	41	-0	-1.1%	+3	+2
Social Care	32	32	-1	-2.3%	-5	-3
Health & Social Care Professionals	32	32	-1	-2.3%	-5	-3
Management (VIII & above)	2	2				
Administrative/ Supervisory (V to VII)	3	3			+0	+0
Clerical (III & IV)	6	6	+0	+4.6%	-1	-0
Management & Administrative	11	11	+0	+2.5%	-0	-0
Support	7	7	+0	+1.0%	+3	+3
Maintenance/ Technical	1	1				-1
General Support	9	9	+0	+0.8%	+3	+2
Health Care Assistants	72	73	+1	+1.4%	-1	+0
Care, other	44	42	-3	-6.3%	-7	-3
Patient & Client Care	116	114	-2	-1.5%	-8	-3

Central Remedial Clinic

Jul 2020 (Dec 2019 figure: 278)	WTE Jun 2020	WTE Jul 2020	WTE change since Jun 20	% change since Jun 20	WTE change since Dec 19	WTE change since Jul 19
Overall	283	283	+0	+0.0%	+5	+7
Consultants	1	1				
Medical/ Dental, other	0	0				
Medical & Dental	2	2				
Nurse/ Midwife Manager	2	2				
Nurse/ Midwife Specialist & AN/MP	1	2	+1	+200.0%	+1	
Staff Nurse/ Staff Midwife	4	4			+1	+1
Nursing/ Midwifery other	1	1			+1	+1
Nursing & Midwifery	8	9	+1	+12.2%	+3	+2
Therapy Professions	78	77	-1	-1.3%	-1	+2
Health Science/ Diagnostics	13	13			-2	-2
Social Workers	9	9			+1	+1
Psychologists	11	11			+0	+0
Health & Social Care Professionals	110	109	-1	-0.9%	-2	+2
Management (VIII & above)	5	5			-2	-2
Administrative/ Supervisory (V to VII)	15	15	-0	-0.0%		+1
Clerical (III & IV)	33	33			+0	+2
Management & Administrative	53	53			-2	+1
Support	14	14			+0	+0
Maintenance/ Technical	1	1				
General Support	15	15			+0	+0
Health Care Assistants	57	56	-1	-1.6%	+5	+0
Care, other	38	39	+1	+2.7%	+0	+1
Patient & Client Care	94	94	+0	+0.1%	+5	+2

Jul 2020 (Dec 2019 figure: 396)	WTE Jun 2020	WTE Jul 2020	WTE change since Jun 20	% change since Jun 20	WTE change since Dec 19	WTE change since Jul 19
Overall	393	395	+1	+0.3%	-2	-6
Consultants	0	0				
Medical/ Dental, other	1	1				
Medical & Dental	1	1				
Nurse/ Midwife Manager	28	30	+2	+7.3%	+4	+1
Nurse/ Midwife Specialist & AN/MP	2	2				
Staff Nurse/ Staff Midwife	103	104	+1	+1.0%	-3	-3
Nursing & Midwifery	132	135	+3	+2.3%	+0	-2
Therapy Professions	12	11	-1	-8.2%	-3	-2
Social Care	35	33	-2	-5.7%	-2	-3
Social Workers	5	5			-1	-1
Psychologists	5	5			+1	+1
Pharmacy	0	0			-0	-0
H&SC, Other	2	2				
Health & Social Care Professionals	59	56	-3	-5.1%	-4	-6
Management (VIII & above)	2	2				
Administrative/ Supervisory (V to VII)	15	15				+0
Clerical (III & IV)	12	12			+1	+1
Management & Administrative	29	29			+1	+1
Support	27	27	+0	+0.0%		+2
Maintenance/ Technical	4	4				
General Support	30	30				+2
Health Care Assistants	131	132	+1	+0.9%	+2	-1
Care, other	12	12			-0	-1
Patient & Client Care	142	143	+1	+0.8%	+1	-2

Children's Sunshine Home

Jul 2020 (Dec 2019 figure: 58)	WTE Jun 2020	WTE Jul 2020	WTE change since Jun 20	% change since Jun 20	WTE change since Dec 19	WTE change since Jul 19
Overall	57	56	-1	-0.9%	-2	-3
Nurse/ Midwife Manager	8	8			+1	
Staff Nurse/ Staff Midwife	19	19			-2	-2
Nursing & Midwifery	27	27			-1	-2
Therapy Professions	2	1	-1	-28.6%	-1	-0
Social Workers	1	1				
Health & Social Care Professionals	3	2	-1	-19.7%	-1	-0
Management (VIII & above)	2	2			-1	-1
Administrative/ Supervisory (V to VII)	4	4				+1
General Administrative (III & IV)	1	1			+1	+1
Clerical (III & IV)	1	1				+1
Management & Administrative	7	7			-1	+1
Support	3	3				-1
General Support	3	3				-1
Health Care Assistants	14	14			-0	-0
Care, other	3	3			-0	-0
Patient & Client Care	17	17			-0	-0

Jul 2020 (Dec 2019 figure: 1,091)	WTE Jun 2020	WTE Jul 2020	WTE change since Jun 20	% change since Jun 20	WTE change since Dec 19	WTE change since Jul 19
Overall	1,126	1,124	-1	-0.1%	+34	+15
Nurse/ Midwife Manager	41	41				
Nurse/ Midwife Specialist & AN/MP	10	10				
Staff Nurse/ Staff Midwife	168	168			-1	+0
Pre-registration Nurse/ Midwife Intern				-100.0%	-8	-9
Pre-registration Nurse Intern (COVID-19)	25	25			+25	+25
Nursing/ Midwifery Student	25	25			+19	+17
Nursing/ Midwifery other	1	1				
Nursing & Midwifery	245	245			+18	+17
Therapy Professions	37	37			-1	+0
Social Care	34	34			+2	-0
Social Workers	9	9				
Psychologists	11	11			+1	+1
H&SC, Other	3	3				
Health & Social Care Professionals	93	93			+3	+1
Management (VIII & above)	7	7			+1	+1
Administrative/ Supervisory (V to VII)	19	19				
Clerical (III & IV)	25	25			+2	+2
Management & Administrative	51	51			+3	+3
Support	77	77			+0	+6
Maintenance/ Technical	6	6				
General Support	83	83				+6
Health Care Assistants	576	575	-1	-0.2%	+11	-18
Care, other	78	78			-1	+6
Patient & Client Care	654	653	-1	-0.2%	+10	-12

Daughters of Charity, Dublin

Jul 2020 (Dec 2019 figure: 1,034)	WTE Jun 2020	WTE Jul 2020	WTE change since Jun 20	% change since Jun 20	WTE change since Dec 19	WTE change since Jul 19
Overall	1,071	1,050	-21	-1.9%	+16	+44
Consultants	2	2			+1	+1
Medical/ Dental, other	2	2				
Medical & Dental	4	4			+1	+1
Nurse/ Midwife Manager	62	62			-0	+2
Nurse/ Midwife Specialist & AN/MP	9	9			+1	+1
Staff Nurse/ Staff Midwife	185	186	+0	+0.1%	-1	+4
<i>Pre-registration Nurse/ Midwife Intern</i>				-100.0%	-8	-8
<i>Pre-registration Nurse Intern (COVID-19)</i>	15	15			+15	+15
Nursing/ Midwifery Student	15	15			+8	+8
Nursing/ Midwifery other	4	4				+1
Nursing & Midwifery	275	276	+0	+0.1%	+8	+16
Therapy Professions	34	34			+1	+2
Social Care	168	165	-3	-1.8%	+2	+15
Social Workers	11	11			+1	+1
Psychologists	10	10			+3	+2
Pharmacy	2	2				
H&SC, Other	5	5			+1	+1
Health & Social Care Professionals	229	226	-3	-1.3%	+7	+20
Management (VIII & above)	7	7			+1	
Administrative/ Supervisory (V to VII)	27	27			+2	-0
Clerical (III & IV)	32	32			-1	-1
Management & Administrative	66	66			+2	-1
Support	78	79	+1	+0.6%	-0	+1
Maintenance/ Technical	8	8				-2
General Support	86	86	+1	+0.6%	-0	-1
Health Care Assistants	380	361	-18	-4.8%	-0	+13
Care, other	31	31			-1	-3
Patient & Client Care	410	392	-18	-4.5%	-1	+10

Daughters of Charity, Limerick

Jul 2020 (Dec 2019 figure: 543)	WTE Jun 2020	WTE Jul 2020	WTE change since Jun 20	% change since Jun 20	WTE change since Dec 19	WTE change since Jul 19
Overall	571	556	-16	-2.8%	+12	+5
Medical/ Dental, other	1	1				
Medical & Dental	1	1				
Nurse/ Midwife Manager	35	35				+2
Nurse/ Midwife Specialist & AN/MP	7	7			-1	-1
Staff Nurse/ Staff Midwife	144	143	-1	-0.7%	-0	-5
<i>Pre-registration Nurse/ Midwife Intern</i>				-100.0%	-7	-6
<i>Pre-registration Nurse Intern (COVID-19)</i>	23	23			+23	+23
Nursing/ Midwifery Student	23	23			+12	+17
Nursing/ Midwifery other	3	3				
Nursing & Midwifery	212	212	-1	-0.4%	+11	+14
Therapy Professions	15	15				
Social Care	55	56	+1	+1.0%	+2	+0
Social Workers	5	5			+0	+0
Psychologists	7	7			+4	+3
H&SC, Other	6	6				
Health & Social Care Professionals	88	89	+1	+0.6%	+6	+3
Management (VIII & above)	2	2				
Administrative/ Supervisory (V to VII)	10	10				
Clerical (III & IV)	14	14			-1	-1
Management & Administrative	26	26			-1	-1
Support	44	44			+3	+1
Maintenance/ Technical	4	4				
General Support	49	49			+3	+1
Health Care Assistants	173	157	-15	-8.9%	-8	-14
Care, other	22	22			+1	+1
Patient & Client Care	195	180	-15	-7.9%	-7	-13

Daughters of Charity, Roscrea

Jul 2020 (Dec 2019 figure: 290)	WTE Jun 2020	WTE Jul 2020	WTE change since Jun 20	% change since Jun 20	WTE change since Dec 19	WTE change since Jul 19
Overall	289	289	+0	+0.1%	-1	-2
Nurse/ Midwife Manager	16	16				-0
Staff Nurse/ Staff Midwife	18	18				-1
Nursing/ Midwifery other	1	1				
Nursing & Midwifery	35	35				-1
Therapy Professions	2	2			+0	+1
Social Care	24	24			+5	+4
Social Workers	1	1				
Psychologists	1	1				
Health & Social Care Professionals	28	28			+5	+4
Management (VIII & above)	1	1				
Administrative/ Supervisory (V to VII)	7	7				
Clerical (III & IV)	7	7			+0	
Management & Administrative	15	15			+0	
Support	4	4				-1
Maintenance/ Technical	5	5			-1	-1
General Support	9	9			-1	-2
Health Care Assistants	201	201	+0	+0.1%	-2	+0
Care, other	2	2			-4	-4
Patient & Client Care	202	203	+0	+0.1%	-5	-4

Jul 2020 (Dec 2019 figure: 226)	WTE Jun 2020	WTE Jul 2020	WTE change since Jun 20	% change since Jun 20	WTE change since Dec 19	WTE change since Jul 19
Overall	258	264	+6	+2.3%	+38	+39
Consultants	1	2	+0	+33.3%	+1	+1
Registrars	2	2				
SHO/ Interns	4	4			-1	-1
Medical & Dental	7	8	+0	+5.6%		
Nurse/ Midwife Manager	17	17			-1	-1
Staff Nurse/ Staff Midwife	71	74	+3	+4.3%	+14	+14
Nursing & Midwifery	88	91	+3	+3.4%	+13	+13
Therapy Professions	30	30			+10	+10
Health Science/ Diagnostics	1	1				
Social Workers	8	8			+1	+1
Pharmacy	3	4	+1	+16.7%	+1	+1
Health & Social Care Professionals	42	43	+1	+1.2%	+11	+11
Management (VIII & above)	1	1				
Administrative/ Supervisory (V to VII)	6	6				
Clerical (III & IV)	11	11			+1	+2
Management & Administrative	18	18			+1	+2
Support	40	40			+6	+6
Maintenance/ Technical	2	2				
General Support	42	42	-0	-0.0%	+6	+6
Health Care Assistants	61	63	+2	+3.3%	+7	+7
Care, other	0	0				
Patient & Client Care	61	63	+2	+3.3%	+7	+7

Kare, Newbridge, Co Kildare

Jul 2020 (Dec 2019 figure: 360)	WTE Jun 2020	WTE Jul 2020	WTE change since Jun 20	% change since Jun 20	WTE change since Dec 19	WTE change since Jul 19
Overall	345	335	-10	-3.0%	-25	-7
Nurse/ Midwife Manager	10	8	-2	-18.7%	-4	-4
Staff Nurse/ Staff Midwife	22	22	+0	+0.3%	-0	+0
Nursing & Midwifery	32	30	-2	-5.7%	-4	-4
Therapy Professions	13	13			-2	-1
Social Care	58	59	+1	+2.0%	-2	-1
Social Workers	4	4				-0
Psychologists	5	5			+1	+2
Health & Social Care Professionals	80	81	+1	+1.5%	-3	-1
Management (VIII & above)	6	5	-1	-16.7%	-1	-1
Administrative/ Supervisory (V to VII)	13	13	+0	+0.5%	+1	+1
Clerical (III & IV)	14	14			+2	+3
Management & Administrative	32	31	-1	-2.9%	+2	+3
Support	1	1			-0	+0
General Support	1	1			-0	+0
Health Care Assistants	90	84	-6	-6.6%	-16	-15
Care, other	109	106	-3	-2.5%	-3	+10
Patient & Client Care	199	190	-9	-4.4%	-20	-6

Leopardstown Park Hospital

Jul 2020 (Dec 2019 figure: 211)	WTE Jun 2020	WTE Jul 2020	WTE change since Jun 20	% change since Jun 20	WTE change since Dec 19	WTE change since Jul 19
Overall	205	204	-1	-0.7%	-7	-5
Medical/ Dental, other	1	1				
Medical & Dental	1	1				
Nurse/ Midwife Manager	16	16			+1	+1
Staff Nurse/ Staff Midwife	40	39	-1	-2.6%	-3	-0
Nursing & Midwifery	57	56	-1	-1.8%	-2	+1
Therapy Professions	7	7	+0	+2.1%		+1
Social Workers	1	1	+0	+81.8%		
Pharmacy	2	2	+0	+3.3%	+0	+0
Health & Social Care Professionals	9	10	+1	+7.0%	+0	+1
Management (VIII & above)	1	1				
Administrative/ Supervisory (V to VII)	7	7				
Clerical (III & IV)	10	10				-1
Management & Administrative	19	19				-1
Support	34	35	+2	+4.5%	+2	+1
Maintenance/ Technical	4	4				+1
General Support	38	39	+2	+4.0%	+2	+2
Health Care Assistants	79	76	-3	-3.6%	-6	-6
Care, other	3	3	+0	+6.8%	-1	-1
Patient & Client Care	82	79	-3	-3.2%	-7	-8

Muiriosa Foundation, Laois/Offaly

Jul 2020 (Dec 2019 figure: 302)	WTE Jun 2020	WTE Jul 2020	WTE change since Jun 20	% change since Jun 20	WTE change since Dec 19	WTE change since Jul 19
Overall	295	291	-4	-1.5%	-11	-9
Nurse/ Midwife Manager	16	16	-0	-0.1%	-0	-0
Staff Nurse/ Staff Midwife	28	27	-1	-2.8%	+1	-1
Nursing & Midwifery	44	43	-1	-1.8%	+1	-2
Social Care	99	97	-2	-2.1%	+3	+1
Social Workers	4	4			-0	
Psychologists	1	1				
H&SC, Other	1	1				-0
Health & Social Care Professionals	105	103	-2	-2.0%	+2	+1
Management (VIII & above)	1	1				
Administrative/ Supervisory (V to VII)	5	5			-0	-0
Clerical (III & IV)	11	11	+0	+0.2%	-0	-1
Management & Administrative	17	17	+0	+0.1%	-0	-1
Support	1	1	+0	+0.8%	+0	+0
Maintenance/ Technical	2	2				
General Support	3	3	+0	+0.3%	+0	+0
Health Care Assistants	98	96	-2	-2.4%	-13	-6
Care, other	28	29	+1	+3.0%	-1	-1
Patient & Client Care	126	125	-2	-1.2%	-14	-7

Muiriosa Foundation, Longford/Westmeath

Jul 2020 (Dec 2019 figure: 270)	WTE Jun 2020	WTE Jul 2020	WTE change since Jun 20	% change since Jun 20	WTE change since Dec 19	WTE change since Jul 19
Overall	275	269	-6	-2.0%	-1	-1
Nurse/ Midwife Manager	9	10	+0	+0.3%	+0	+0
Staff Nurse/ Staff Midwife	5	5	-0	-3.1%	-1	-2
Nursing & Midwifery	14	14	-0	-0.8%	-1	-2
Therapy Professions	3	3				
Social Care	98	96	-2	-1.9%	+3	-2
Social Workers	4	4			+1	+2
Psychologists	2	2	-0	-1.0%	+0	-0
H&SC, Other	3	3	+0	+1.6%	-0	-0
Health & Social Care Professionals	110	108	-2	-1.7%	+3	-0
Administrative/ Supervisory (V to VII)	5	5	+0	+1.0%	+1	+2
Clerical (III & IV)	10	10	-0	-0.5%	-0	+1
Management & Administrative	15	15	+0	+0.0%	+1	+3
Support	1	1				
Maintenance/ Technical	3	3				
General Support	4	4				
Health Care Assistants	115	112	-3	-2.8%	-3	+0
Care, other	17	17	-0	-1.6%	-1	-2
Patient & Client Care	132	129	-4	-2.7%	-4	-2

Jul 2020 (Dec 2019 figure: 334)	WTE Jun 2020	WTE Jul 2020	WTE change since Jun 20	% change since Jun 20	WTE change since Dec 19	WTE change since Jul 19
Overall	355	344	-10	-2.9%	+11	+9
Nurse/ Midwife Manager	16	14	-2	-13.6%	-4	-5
Nurse/ Midwife Specialist & AN/MP	1	1	-0	-6.1%		
Staff Nurse/ Staff Midwife	25	23	-1	-4.2%	-0	-2
Pre-registration Nurse/ Midwife Intern				-100.0%		-2
Pre-registration Nurse Intern (COVID-19)	9	9	+0	+0.7%	+9	+9
Nursing/ Midwifery Student	9	9	+0	+0.7%	+9	+7
Nursing/ Midwifery other	7	7			+2	+2
Nursing & Midwifery	58	55	-3	-5.7%	+6	+2
Therapy Professions	8	7	-0	-2.8%	-1	-1
Social Care	94	92	-2	-1.7%	+3	+7
Social Workers	2	2				
Psychologists	2	2			-0	
H&SC, Other	3	3				+1
Health & Social Care Professionals	108	106	-2	-1.7%	+2	+7
Management (VIII & above)	3	5	+2	+66.7%	+2	+2
Administrative/ Supervisory (V to VII)	14	14			+0	+0
Clerical (III & IV)	14	14	+0	+0.6%	+1	-0
Management & Administrative	31	33	+2	+6.8%	+3	+2
Support	14	14	-0	-2.9%	-2	-3
Maintenance/ Technical	5	5				
General Support	19	19	-0	-2.2%	-2	-3
Health Care Assistants	131	124	-7	-5.2%	+1	+3
Care, other	8	8	-0	-1.8%	-0	-2
Patient & Client Care	138	132	-7	-5.0%	+1	+2

Peamount Hospital (Newcastle)

Jul 2020 (Dec 2019 figure: 486)	WTE Jun 2020	WTE Jul 2020	WTE change since Jun 20	% change since Jun 20	WTE change since Dec 19	WTE change since Jul 19
Overall	510	526	+16	+3.1%	+39	+36
Registrars	2	2				+1
SHO/ Interns	8	7	-0	-6.2%	+0	+0
Medical & Dental	10	9	-0	-4.9%	+0	+1
Nurse/ Midwife Manager	27	30	+4	+14.7%	+4	+4
Nurse/ Midwife Specialist & AN/MP	2		-2	-100.0%	-2	-2
Staff Nurse/ Staff Midwife	87	90	+4	+4.1%	+8	+6
Nursing & Midwifery	115	120	+6	+4.9%	+10	+8
Therapy Professions	39	39	+0	+0.2%	+10	+12
Health Science/ Diagnostics	3	3				
Social Care	5	5			+3	+2
Social Workers	6	6			+1	+1
Pharmacy	5	5	+0	+9.5%	+1	+2
Health & Social Care Professionals	58	59	+1	+0.9%	+15	+17
Management (VIII & above)	4	4				
Administrative/ Supervisory (V to VII)	18	18	+0	+1.0%	+4	+2
Clerical (III & IV)	18	18	+0	+1.3%	-2	-2
Management & Administrative	39	40	+0	+1.0%	+2	-0
Support	46	47	+1	+2.7%	+0	-1
Maintenance/ Technical	9	9			+2	+1
General Support	55	56	+1	+2.3%	+2	-1
Health Care Assistants	229	238	+9	+3.8%	+10	+11
Care, other	3	3			-0	+0
Patient & Client Care	233	241	+9	+3.7%	+10	+11

Jul 2020 (Dec 2019 figure: 272)	WTE Jun 2020	WTE Jul 2020	WTE change since Jun 20	% change since Jun 20	WTE change since Dec 19	WTE change since Jul 19
Overall	277	277			+5	-6
Registrars	1	1				
Medical/ Dental, other	1	1				
Medical & Dental	2	2				
Nurse/ Midwife Manager	19	19			-1	-3
Staff Nurse/ Staff Midwife	76	76			+2	+1
Nursing & Midwifery	95	95			+1	-2
Therapy Professions	29	29			-2	-3
Social Workers	6	6				-0
Psychologists	1	1				
Health & Social Care Professionals	35	35			-2	-3
Management (VIII & above)				-100.0%		-1
Administrative/ Supervisory (V to VII)	6	6				+0
Clerical (III & IV)	8	8			+1	-0
Management & Administrative	14	14			+1	-1
Support	34	34			-2	-1
Maintenance/ Technical	5	5			+1	+1
General Support	39	39			-1	+0
Health Care Assistants	91	91			+5	-0
Care, other	1	1			+1	+1
Patient & Client Care	92	92			+6	+0

Stewart's Hospital, (Palmerstown)

Jul 2020 (Dec 2019 figure: 852)	WTE Jun 2020	WTE Jul 2020	WTE change since Jun 20	% change since Jun 20	WTE change since Dec 19	WTE change since Jul 19
Overall	866	863	-4	-0.4%	+11	-14
Consultants	0	0				
Registrars				-100.0%		
Medical & Dental	0	0				
Nurse/ Midwife Manager	33	32	-1	-3.1%	-4	-6
Staff Nurse/ Staff Midwife	74	74			+1	+0
<i>Pre-registration Nurse/ Midwife Intern</i>				-100.0%		-7
<i>Pre-registration Nurse Intern (COVID-19)</i>	15	15			+15	+15
Nursing/ Midwifery Student	15	15			+15	+8
Nursing/ Midwifery other	1	1				
Nursing & Midwifery	122	121	-1	-0.8%	+12	+2
Therapy Professions	15	14	-1	-3.4%	-2	-2
Social Care	13	13			+3	+2
Social Workers	7	6	-1	-7.4%	+1	+1
Psychologists	4	4			-1	-1
Health & Social Care Professionals	38	37	-1	-2.6%	+2	+0
Management (VIII & above)	11	11				-1
Administrative/ Supervisory (V to VII)	17	17			+3	-1
Clerical (III & IV)	23	22	-1	-2.4%	-1	-3
Management & Administrative	51	50	-1	-1.1%	+2	-5
Support	57	57			+0	-2
Maintenance/ Technical	4	4			-1	-2
General Support	61	61			-1	-4
Health Care Assistants	481	479	-2	-0.4%	-2	-2
Care, other	113	114	+1	+0.9%	-2	-6
Patient & Client Care	594	593	-1	-0.2%	-4	-7

Jul 2020 (Dec 2019 figure: 647)	WTE Jun 2020	WTE Jul 2020	WTE change since Jun 20	% change since Jun 20	WTE change since Dec 19	WTE change since Jul 19
Overall	657	645	-12	-1.8%	-1	+7
Registrars	1	1				
Medical & Dental	1	1				
Nurse/ Midwife Manager	44	45	+0	+0.9%	+1	+4
Nurse/ Midwife Specialist & AN/MP	4	4	-0	-0.3%		
Staff Nurse/ Staff Midwife	148	145	-3	-2.0%	-8	+2
<i>Pre-registration Nurse/ Midwife Intern</i>				-100.0%	-1	-10
<i>Pre-registration Nurse Intern (COVID-19)</i>	21	21	-0	-1.1%	+21	+21
Nursing/ Midwifery Student	21	21	-0	-1.1%	+21	+11
Nursing & Midwifery	217	215	-3	-1.3%	+15	+18
Therapy Professions	3	3				
Social Care	78	76	-2	-2.6%	-3	+0
Social Workers	2	2			-0	-0
Psychologists	1	1				
Health & Social Care Professionals	83	81	-2	-2.4%	-3	+0
Management (VIII & above)	1	1			-0	-1
Administrative/ Supervisory (V to VII)	6	6			-0	+1
Clerical (III & IV)	12	12	-0	-1.7%	+0	+1
Management & Administrative	19	18	-0	-1.1%	+0	+0
Support	22	21	-2	-8.1%	-3	-3
Maintenance/ Technical	3	3			-0	-0
General Support	25	23	-2	-7.2%	-3	-3
Health Care Assistants	277	273	-4	-1.3%	-8	-5
Care, other	35	34	-1	-3.3%	-3	-3
Patient & Client Care	311	306	-5	-1.6%	-11	-8

St. John of God (IDS)

Jul 2020 (Dec 2019 figure: 456)	WTE Jun 2020	WTE Jul 2020	WTE change since Jun 20	% change since Jun 20	WTE change since Dec 19	WTE change since Jul 19
Overall	444	448	+4	+0.8%	-9	-3
Medical & Dental	1	1				
Nurse/ Midwife Manager	8	8			+0	-1
Staff Nurse/ Staff Midwife	45	45	-0	-0.1%	-1	-2
Nursing & Midwifery	53	53	-0	-0.1%	-1	-3
Therapy Professions	10	11	+0	+0.8%	-2	-2
Social Care	150	148	-2	-1.0%	+2	+2
Social Workers	3	3			-1	
Psychologists	6	6	-0	-3.1%	+1	+0
Health & Social Care Professionals	170	168	-2	-1.0%	+1	+1
Management (VIII & above)	15	15	+0	+1.4%	+0	-1
Administrative/ Supervisory (V to VII)	26	26	+0	+0.2%	-2	-1
Clerical (III & IV)	19	19	+0	+0.3%	-1	+1
Management & Administrative	59	59	+0	+0.5%	-3	-1
Support	12	12	+0	+3.2%	-0	+0
Maintenance/ Technical	5	5			+0	+1
General Support	17	17	+0	+2.2%	+0	+1
Health Care Assistants	16	16	+1	+4.2%	-3	+0
Care, other	129	133	+4	+3.2%	-3	-1
Patient & Client Care	145	149	+5	+3.3%	-6	-1

St. John of God, Kerry

Jul 2020 (Dec 2019 figure: 315)	WTE Jun 2020	WTE Jul 2020	WTE change since Jun 20	% change since Jun 20	WTE change since Dec 19	WTE change since Jul 19
Overall	313	313	-0	-0.1%	-2	+6
Nurse/ Midwife Manager	15	15	+0	+2.2%	-1	-0
Staff Nurse/ Staff Midwife	48	47	-0	-0.3%	-1	-4
Nursing & Midwifery	62	63	+0	+0.3%	-2	-4
Therapy Professions	3	3	-0	-1.2%	-0	-0
Social Care	44	44	+0	+0.2%	-1	+2
Social Workers	1	1	-0	-32.0%	-0	-0
Psychologists	1	1			-1	-1
Health & Social Care Professionals	49	49	-0	-0.5%	-3	+1
Management (VIII & above)	1	1				+1
Administrative/ Supervisory (V to VII)	7	7	-0	-0.8%	-0	-0
Clerical (III & IV)	10	10	-0	-3.2%	-0	-0
Management & Administrative	18	18	-0	-2.0%	-0	+1
General Support	29	29	+0	+0.2%	-1	+0
Health Care Assistants	113	113	+1	+0.6%	+8	+10
Care, other	42	41	-1	-1.5%	-5	-1
Patient & Client Care	154	155	+0	+0.1%	+3	+9

Jul 2020 (Dec 2019 figure: 787)	WTE Jun 2020	WTE Jul 2020	WTE change since Jun 20	% change since Jun 20	WTE change since Dec 19	WTE change since Jul 19
Overall	738	768	+29	+4.0%	-20	+18
Registrars	1	1				
Medical & Dental	1	1				
Nurse/ Midwife Manager	23	23	-0	-0.7%	+3	-1
Nurse/ Midwife Specialist & AN/MP	1	1				
Staff Nurse/ Staff Midwife	87	89	+2	+1.8%	-2	+9
Nursing & Midwifery	111	112	+1	+1.2%	+2	+7
Therapy Professions	14	17	+3	+21.9%	+3	+1
Social Care	242	252	+10	+4.0%	-1	+6
Social Workers	6	6	+0	+7.4%	-1	-2
Psychologists	7	7	-0	-0.6%	+1	+1
<i>Play Therapists/ Specialists</i>	2		-2	-100.0%		
H&SC, Other	2		-2	-100.0%		
Health & Social Care Professionals	270	282	+11	+4.1%	+2	+7
Management (VIII & above)	6	6			-0	-0
Administrative/ Supervisory (V to VII)	10	10			-1	+1
Clerical (III & IV)	18	19	+1	+6.0%	+1	+1
Management & Administrative	34	35	+1	+3.2%	-0	+1
Support	29	30	+0	+0.8%	-5	-5
Maintenance/ Technical	13	13			+1	+1
General Support	43	43	+0	+0.6%	-4	-4
Health Care Assistants	142	158	+16	+11.0%	-14	+3
Care, other	137	137			-5	+4
Patient & Client Care	279	295	+16	+5.6%	-19	+7

St. Michael's House, Dublin

Jul 2020 (Dec 2019 figure: 1,431)	WTE Jun 2020	WTE Jul 2020	WTE change since Jun 20	% change since Jun 20	WTE change since Dec 19	WTE change since Jul 19
Overall	1,403	1,376	-27	-1.9%	-55	+21
Consultants	6	6	+0	+2.5%	-2	-0
Registrars	3	2	-1	-42.6%	-2	-3
Medical/ Dental, other	4	4	-0	-8.5%		
Medical & Dental	13	12	-1	-10.3%	-4	-3
Nurse/ Midwife Manager	86	87	+1	+0.9%	+3	+6
Staff Nurse/ Staff Midwife	154	152	-3	-1.9%	-10	-3
Nursing & Midwifery	241	238	-2	-0.9%	-7	+3
Therapy Professions	55	55	-0	-0.4%	+3	+10
Social Care	533	527	-6	-1.1%	+2	+20
Social Workers	21	21	-1	-3.8%	+1	+1
Psychologists	19	19			+0	+2
H&SC, Other	10	10			+0	-0
Health & Social Care Professionals	639	632	-7	-1.1%	+7	+33
Management (VIII & above)	22	22			+0	+1
Administrative/ Supervisory (V to VII)	42	42	-0	-0.2%	-1	+3
Clerical (III & IV)	51	51	-0	-0.7%	-3	+4
Management & Administrative	115	114	-0	-0.4%	-4	+8
Support	90	67	-24	-26.2%	-29	-7
Maintenance/ Technical	12	12			-0	-1
General Support	102	79	-24	-23.1%	-29	-8
Health Care Assistants	271	278	+7	+2.6%	-16	-11
Care, other	24	24	+0	+1.1%	-1	-1
Patient & Client Care	294	301	+7	+2.4%	-17	-12

St. Patrick's, Kilkenny

Jul 2020 (Dec 2019 figure: 279)	WTE Jun 2020	WTE Jul 2020	WTE change since Jun 20	% change since Jun 20	WTE change since Dec 19	WTE change since Jul 19
Overall	285	288	+3	+1.1%	+9	-1
Nurse/ Midwife Manager	12	11	-1	-10.3%	+1	+1
Staff Nurse/ Staff Midwife	25	25	+1	+2.0%	+0	-4
Nursing & Midwifery	37	36	-1	-2.0%	+1	-2
Social Care	26	27	+1	+4.6%	-8	-8
Social Workers	1		-1	-100.0%	-2	-2
H&SC, Other	3	3			-0	+0
Health & Social Care Professionals	30	30	+0	+0.7%	-10	-9
Executive Management	1	1			+1	+1
Management (VIII & above)	1	1			+1	+1
Administrative/ Supervisory (V to VII)	5	6	+1	+16.2%	-1	-0
Clerical (III & IV)	13	13	-1	-6.7%	-1	-1
Management & Administrative	19	19	-0	-0.5%	-1	-0
Support	3	3	+0	+10.3%	-4	-10
Maintenance/ Technical	3	3				-2
General Support	6	6	+0	+4.9%	-4	-12
Patient & Client Care	193	196	+3	+1.8%	+23	+23

Sunbeam House Services

Jul 2020 (Dec 2019 figure: 449)	WTE Jun 2020	WTE Jul 2020	WTE change since Jun 20	% change since Jun 20	WTE change since Dec 19	WTE change since Jul 19
Overall	428	433	+5	+1.1%	-16	-5
Nurse/ Midwife Manager	3	3			-1	-2
Staff Nurse/ Staff Midwife	32	28	-4	-12.9%	-9	-10
Nursing & Midwifery	35	31	-4	-11.8%	-10	-12
Therapy Professions	1	1	-0	-2.2%		-0
Social Care	161	165	+4	+2.4%	-17	-14
Social Workers	2	2	-0	-1.7%	-0	-0
Psychologists	2	2			+1	+1
H&SC, Other				-100.0%	-1	
Health & Social Care Professionals	166	170	+4	+2.3%	-16	-14
Management (VIII & above)	9	10	+1	+11.1%	+1	+1
Administrative/ Supervisory (V to VII)	11	9	-1	-11.7%	+1	+1
Clerical (III & IV)	31	36	+4	+13.7%	+12	+10
Management & Administrative	51	55	+4	+7.9%	+14	+12
Support	23	28	+5	+22.3%	+23	+16
Maintenance/ Technical	3	2	-1	-41.0%	-0	+2
General Support	26	29	+4	+14.9%	+22	+18
Health Care Assistants	57	63	+5	+9.3%	-9	+1
Care, other	93	85	-8	-8.7%	-18	-10
Patient & Client Care	150	147	-3	-1.9%	-26	-9

Bros. of Charity, West Region

Jul 2020 (Dec 2019 figure: 1,288)	WTE Jun 2020	WTE Jul 2020	WTE change since Jun 20	% change since Jun 20	WTE change since Dec 19	WTE change since Jul 19
Overall	1,263	1,265	+2	+0.2%	-23	+18
Consultants	3	2	-0	-4.0%		
Registrars	2	2	+0	+10.0%	+0	+0
Medical & Dental	5	5	+0	+2.2%	+0	+0
Nurse/ Midwife Manager	66	67	+1	+1.2%	-0	+5
Nurse/ Midwife Specialist & AN/MP	5	4	-1	-20.5%	-1	-1
Staff Nurse/ Staff Midwife	118	116	-1	-1.1%	-3	-4
<i>Pre-registration Nurse Intern (COVID-19)</i>		1	+1	-100.0%	+1	+1
Nursing/ Midwifery Student		1	+1	-100.0%	+1	+1
Nursing & Midwifery	189	189	-1	-0.3%	-3	+2
Therapy Professions	29	27	-2	-6.8%	-7	-5
Social Care	209	208	-1	-0.3%	+13	+19
Social Workers	26	26	-1	-2.0%	+0	+1
Psychologists	14	12	-1	-8.9%	-2	-3
H&SC, Other	14	13	-1	-5.1%	-2	-3
Health & Social Care Professionals	292	287	-5	-1.7%	+1	+9
Management (VIII & above)	13	13			-0	-0
Administrative/ Supervisory (V to VII)	35	35	-0	-0.2%	+0	+3
Clerical (III & IV)	36	35	-1	-2.9%	-2	-4
Management & Administrative	84	83	-1	-1.3%	-2	-1
Support	40	35	-5	-11.5%	-9	-10
Maintenance/ Technical	5	5			+0	+0
General Support	45	40	-5	-10.2%	-9	-10
Health Care Assistants	532	542	+10	+1.8%	-4	+12
Care, other	117	121	+4	+3.1%	-6	+6
Patient & Client Care	649	662	+13	+2.0%	-10	+17

Social Care Services Employment by Grade Group: Jul 2020

Jul 2020 (Dec 2019 figure: 31,535)	WTE Jun 2020	WTE Jul 2020	WTE change since Jun 20	% change since Jun 20	WTE change since Dec 19	WTE change since Jul 19
Overall	31,732	31,892	+160	+0.5%	+356	+455
Consultant Medicine	4	5	+0	+9.5%	+1	+1
Consultant Paediatrics	3	3				
Consultant Psychiatry	20	19	-0	-1.5%	-2	-1
Consultants	27	27	+0	+0.4%	-1	+0
Registrar	11	9	-2	-17.7%	-4	-3
Senior Registrar	3	4	+1	+33.3%	+1	+2
Specialist Registrar	6	5	-0	-8.7%	-1	-1
Registrars	20	18	-1	-7.3%	-4	-2
SHO/ Interns	23	21	-2	-7.2%	-1	+0
Medical/ Dental, other	100	99	-1	-0.8%	-11	-1
Medical & Dental	170	166	-4	-2.2%	-17	-3
Clinical Nurse/ Midwife Manager	1,343	1,355	+12	+0.9%	+36	+6
Director Nursing/Midwifery, Assistant	143	144	+1	+0.8%	+1	+6
Director of Nursing/Midwifery	142	141	-2	-1.1%	+0	+3
Nurse/ Midwife Manager	1,628	1,639	+11	+0.7%	+37	+16
Advanced Nurse/ Midwife Practitioner	14	15	+1	+7.2%	+2	+4
Clinical Nurse/ Midwife Specialist	84	81	-3	-3.2%	+6	+5
Nurse/ Midwife Specialist & AN/MP	98	96	-2	-1.8%	+8	+8
Staff Nurse [Intellectual Disability]	1,581	1,573	-9	-0.6%	-24	-53
Staff Nurse [Psychiatric]	66	61	-5	-7.7%	-27	-8
Staff Nurses [General/ Children's]	3,510	3,501	-9	-0.3%	+37	+69
Staff Nurse/ Staff Midwife	5,158	5,135	-23	-0.4%	-14	+8
Public Health Nurse	19	20	+0	+0.5%	-0	+1
Pre-registration Nurse/ Midwife Intern	7	7	-0	-3.0%	-21	-63
Pre-registration Nurse Intern (COVID-19)	160	155	-5	-3.0%	+155	+155
Post-registration Nurse/ Midwife Student	5	4	-1	-21.4%	+3	+4
Nursing/ Midwifery awaiting registration	13	14	+1	+8.4%	-1	+14
Nursing/ Midwifery Student	184	179	-5	-2.8%	+135	+110
Nursing Education/Clinical	27	27	+0	+0.2%	+5	+5
Other Nursing/ Midwifery	1	1				
Nursing/ Midwifery other	28	28	+0	+0.2%	+5	+5
Nursing & Midwifery	7,115	7,097	-18	-0.3%	+170	+147
Dietitians	39	41	+2	+5.2%	+6	+7
Occupational Therapists	388	389	+1	+0.2%	+12	+38
Physiotherapists	322	317	-5	-1.6%	+4	+6
Podiatrists & Chiropodists	12	12	-0	-1.1%	+0	+1
Speech & Language Therapists	321	322	+2	+0.5%	+7	+16
Therapy Professions	1,082	1,082	-1	-0.1%	+29	+68
Clinical Engineering	12	12			-1	-1
Clinical Measurement	1	2	+1	+72.0%	+1	+1
Medical Laboratory	4	4				
Phlebotomists	1		-1	-100.0%	-1	-1
Radiographers	6	6	+0	+1.3%	-1	-0
Health Science/ Diagnostics	24	24	+0	+0.4%	-2	-1
Social Care	2,617	2,621	+4	+0.2%	+23	+55
Social Workers	322	319	-3	-1.0%	+2	-0
Psychologists	214	215	+0	+0.1%	+8	+6
Pharmacy	24	25	+1	+5.1%	+3	+4

Jul 2020 (Dec 2019 figure: 31,535)	WTE Jun 2020	WTE Jul 2020	WTE change since Jun 20	% change since Jun 20	WTE change since Dec 19	WTE change since Jul 19
Overall	31,732	31,892	+160	+0.5%	+356	+455
Counsellor Therapists	19	21	+2	+10.7%	+2	+4
Other Health & Social Care	51	50	-1	-1.7%	-1	-1
Play Therapists/ Specialists	15	14	-1	-5.9%	-3	-3
H&SC, Other	84	85	+0	+0.3%	-1	-0
Health & Social Care Professionals	4,368	4,370	+2	+0.0%	+61	+131
Executive Management	46	47	+1	+2.2%	+4	+6
Senior Management (VIII & GM)	215	217	+2	+1.0%	+5	+6
Management (VIII & above)	261	264	+3	+1.3%	+10	+12
Middle Management (V-VII)	654	652	-2	-0.3%	+24	+48
Other Administrative	17	16	-1	-5.9%	-0	-3
Administrative/ Supervisory (V to VII)	671	668	-3	-0.4%	+24	+45
Clerical (III & IV)	1,242	1,246	+4	+0.3%	+14	+26
Management & Administrative	2,173	2,178	+5	+0.2%	+48	+83
Catering	328	330	+2	+0.7%	+11	+11
Household Services	909	923	+14	+1.5%	+11	-25
Other Labs & Associated	1	1				
Other Support	212	185	-27	-12.7%	-37	-13
Portering	106	106	+0	+0.1%	-3	-3
Support	1,556	1,545	-11	-0.7%	-18	-30
Maintenance	220	222	+1	+0.7%	+7	+1
Technical Services	7	7			-1	-1
Maintenance/ Technical	228	229	+1	+0.6%	+6	-0
General Support	1,783	1,774	-9	-0.5%	-12	-31
HCA, Nurse's Aide, etc.	11,159	11,288	+129	+1.2%	+449	+392
Health & Social Care Assistants	35	37	+1	+3.7%	+6	+5
Health Care Assistants	11,194	11,325	+130	+1.2%	+455	+397
Home Help	3,197	3,249	+51	+1.6%	-302	-295
Care, other	1,730	1,734	+3	+0.2%	-47	+25
Patient & Client Care	16,122	16,307	+185	+1.1%	+106	+128

Employment by WTE, Headcount, Gender, Full-Time /Part-Time etc.: Jul 2020

Social Care Services Staff Group	WTE	Headcount	WTE: no.	% Male	% female	Male WTE: no.	Female WTE: no.	% Total Perm	% Male Perm	% Female Perm	% Total Full Time	% Total Part Time	% Male FT	% Female FT
Overall	31,892	38,801	1.22	16.2%	83.8%	1.11	1.24	88.0%	87.0%	88.2%	52.4%	47.6%	72.1%	48.6%
Consultant Medicine	5	7	1.52	14.3%	85.7%	2.00	1.46	85.7%	85.7%	83.3%	28.6%	71.4%	0.0%	33.3%
Consultant Paediatrics	3	6	1.97	16.7%	83.3%	1.82	2.00	66.7%	66.7%	80.0%	33.3%	66.7%	100.0%	20.0%
Consultant Psychiatry	19	26	1.35	30.8%	69.2%	1.28	1.38	80.8%	80.8%	77.8%	61.5%	38.5%	75.0%	55.6%
Consultants	27	39	1.45	25.6%	74.4%	1.37	1.48	79.5%	80.0%	79.3%	51.3%	48.7%	70.0%	44.8%
Registrar	9	13	1.43	61.5%	38.5%	1.69	1.16	15.4%	15.4%	0.0%	92.3%	7.7%	100.0%	80.0%
Senior Registrar	4	4	1.00		100.0%		1.00	75.0%	75.0%	75.0%	50.0%	50.0%		50.0%
Specialist Registrar	5	8	1.56	25.0%	75.0%	1.82	1.49	0.0%	0.0%	0.0%	62.5%	37.5%	0.0%	83.3%
Registrars	18	25	1.37	40.0%	60.0%	1.71	1.21	20.0%	20.0%	20.0%	76.0%	24.0%	80.0%	73.3%
SHO/ Interns	21	32	1.51	43.8%	56.3%	1.34	1.67	0.0%	0.0%	0.0%	100.0%	0.0%	100.0%	100.0%
Medical/ Dental, other	99	184	1.85	63.6%	36.4%	1.95	1.70	86.4%	88.0%	83.6%	24.5%	75.5%	22.2%	28.4%
Medical & Dental	166	280	1.69	53.9%	46.1%	1.81	1.57	69.6%	74.8%	63.6%	41.4%	58.6%	36.4%	47.3%
Clinical Nurse/ Midwife Manager	1,355	1,458	1.08	10.4%	89.6%	1.02	1.08	95.3%	95.3%	95.6%	79.2%	20.8%	95.4%	77.4%
Director Nursing/Midwifery, Assistant	144	151	1.05	8.6%	91.4%	1.00	1.05	98.0%	98.0%	97.8%	89.4%	10.6%	100.0%	88.4%
Director of Nursing/Midwifery	141	142	1.01	7.0%	93.0%	1.00	1.01	98.6%	98.6%	98.5%	98.6%	1.4%	100.0%	98.5%
Nurse/ Midwife Manager	1,639	1,751	1.07	9.9%	90.1%	1.02	1.07	95.8%	93.7%	96.0%	81.7%	18.3%	96.0%	80.1%
Advanced Nurse/ Midwife Practitioner	15	15	1.02	20.0%	80.0%	1.00	1.02	100.0%	100.0%	100.0%	93.3%	6.7%	100.0%	91.7%
Clinical Nurse/ Midwife Specialist	81	95	1.17	5.3%	94.7%	1.01	1.18	97.9%	97.9%	97.8%	53.7%	46.3%	100.0%	51.1%
Nurse/ Midwife Specialist & AN/MP	96	110	1.15	7.3%	92.7%	1.01	1.16	98.2%	100.0%	98.0%	59.1%	40.9%	100.0%	55.9%
Staff Nurse [Intellectual Disability]	1,573	1,832	1.16	8.5%	91.5%	1.09	1.17	95.4%	95.4%	95.3%	63.8%	36.2%	84.5%	61.8%
Staff Nurse [Psychiatric]	61	79	1.29	17.7%	82.3%	1.17	1.32	87.3%	87.3%	89.2%	62.0%	38.0%	78.6%	58.5%
Staff Nurses [General/ Children's]	3,501	4,088	1.17	8.2%	91.8%	1.04	1.18	96.4%	96.4%	96.6%	59.7%	40.3%	87.5%	57.2%
Staff Nurse/ Staff Midwife	5,135	5,999	1.17	8.4%	91.6%	1.06	1.18	95.9%	94.2%	96.1%	60.9%	39.1%	86.3%	58.6%
Public Health Nurse	20	23	1.18	13.0%	87.0%	1.00	1.21	100.0%	100.0%	100.0%	52.2%	47.8%	100.0%	45.0%
Nursing/ Midwifery Student	179	192	1.07	4.7%	95.3%	1.02	1.07	21.4%	0.0%	22.4%	77.6%	22.4%	100.0%	76.5%
Nursing Education/Clinical	27	30	1.11		100.0%		1.11	93.3%	93.3%	93.3%	76.7%	23.3%		76.7%
Other Nursing/ Midwifery	1	1	1.00	100.0%		1.00		100.0%	100.0%		100.0%	0.0%	100.0%	
Nursing/ Midwifery other	28	31	1.11	3.2%	96.8%	1.00	1.11	93.5%	100.0%	93.3%	77.4%	22.6%	100.0%	76.7%

Nursing & Midwifery	7,097	8,106	1.14	8.6%	91.4%	1.05	1.15	94.2%	93.0%	94.3%	65.8%	34.2%	89.1%	63.6%
Dietitians	41	52	1.26	3.8%	96.2%	1.00	1.27	84.6%	84.6%	84.0%	57.7%	42.3%	100.0%	56.0%
Occupational Therapists	389	442	1.14	6.8%	93.2%	1.05	1.14	92.1%	92.1%	92.0%	75.3%	24.7%	86.7%	74.5%
Physiotherapists	317	366	1.16	15.8%	84.2%	1.06	1.18	92.1%	92.1%	91.9%	66.7%	33.3%	87.9%	62.7%
Podiatrists & Chiropodists	12	17	1.41	23.5%	76.5%	1.14	1.52	100.0%	100.0%	100.0%	47.1%	52.9%	75.0%	38.5%
Speech & Language Therapists	322	372	1.15	1.9%	98.1%	1.08	1.16	90.1%	90.1%	90.1%	72.8%	27.2%	85.7%	72.6%
Therapy Professions	1,082	1,249	1.15	8.1%	91.9%	1.06	1.16	91.3%	93.1%	91.1%	70.9%	29.1%	87.1%	69.5%
Clinical Engineering	12	12	1.00	83.3%	16.7%	1.01	1.00	83.3%	83.3%	50.0%	91.7%	8.3%	90.0%	100.0%
Clinical Measurement	2	3	1.22	66.7%	33.3%	1.00	2.17	33.3%	33.3%	0.0%	66.7%	33.3%	100.0%	0.0%
Medical Laboratory	4	4	1.00	75.0%	25.0%	1.00	1.00	75.0%	75.0%	0.0%	100.0%	0.0%	100.0%	100.0%
Radiographers	6	10	1.78	10.0%	90.0%	2.00	1.76	90.0%	90.0%	88.9%	20.0%	80.0%	0.0%	22.2%
Health Science/ Diagnostics	24	29	1.21	55.2%	44.8%	1.04	1.52	79.3%	87.5%	69.2%	65.5%	34.5%	87.5%	38.5%
Social Care	2,621	3,101	1.18	15.4%	84.6%	1.10	1.20	90.1%	92.1%	89.8%	48.5%	51.5%	63.9%	45.7%
Social Workers	319	371	1.16	16.4%	83.6%	1.05	1.19	93.5%	91.8%	93.9%	70.9%	29.1%	86.9%	67.7%
Psychologists	215	248	1.16	19.4%	80.6%	1.06	1.18	93.1%	89.6%	94.0%	71.0%	29.0%	83.3%	68.0%
Pharmacy	25	34	1.35	20.6%	79.4%	1.32	1.35	85.3%	85.7%	85.2%	52.9%	47.1%	57.1%	51.9%
Counsellor Therapists	21	25	1.21	8.0%	92.0%	1.00	1.23	100.0%	100.0%	100.0%	52.0%	48.0%	100.0%	47.8%
Other Health & Social Care	50	62	1.24	19.4%	80.6%	1.21	1.24	88.7%	88.7%	88.0%	50.0%	50.0%	66.7%	46.0%
Play Therapists/ Specialists	14	17	1.22	23.5%	76.5%	1.00	1.31	94.1%	94.1%	92.3%	58.8%	41.2%	100.0%	46.2%
H&SC, Other	85	104	1.23	17.3%	82.7%	1.13	1.25	92.3%	94.4%	91.9%	51.9%	48.1%	77.8%	46.5%
Health & Social Care	4,370	5,136	1.18	14.2%	85.8%	1.09	1.19	90.8%	91.9%	90.6%	56.8%	43.2%	71.1%	54.5%
Executive Management	47	47	1.00	46.8%	53.2%	1.00	1.00	93.6%	93.6%	92.0%	100.0%	0.0%	100.0%	100.0%
Senior Management (VIII & GM)	217	223	1.03	30.0%	70.0%	1.03	1.03	95.1%	95.1%	94.9%	93.3%	6.7%	95.5%	92.3%
Management (VIII & above)	264	270	1.02	33.0%	67.0%	1.02	1.02	94.8%	95.5%	94.5%	94.4%	5.6%	96.6%	93.4%
Middle Management (V-VII)	652	707	1.08	20.1%	79.9%	1.04	1.10	93.4%	93.4%	94.3%	79.3%	20.7%	91.5%	76.3%
Other Administrative	16	16	1.01	25.0%	75.0%	1.00	1.02	93.8%	93.8%	100.0%	93.8%	6.3%	100.0%	91.7%
Administrative/ Supervisory (V to VII)	668	723	1.08	20.2%	79.8%	1.04	1.09	93.4%	89.0%	94.5%	79.7%	20.3%	91.8%	76.6%
Clerical (III & IV)	1,246	1,487	1.19	8.5%	91.5%	1.08	1.21	89.5%	78.6%	90.5%	58.9%	41.1%	77.8%	57.2%
Management & Administrative	2,178	2,480	1.14	14.6%	85.4%	1.05	1.16	91.2%	87.0%	91.9%	68.8%	31.2%	88.1%	65.5%
Catering	330	377	1.14	31.3%	68.7%	1.08	1.17	96.8%	96.8%	97.3%	66.6%	33.4%	91.5%	55.2%
Household Services	923	1,180	1.28	16.9%	83.1%	1.26	1.28	90.0%	90.0%	91.7%	44.1%	55.9%	63.5%	40.1%
Other Labs & Associated	1	1	1.00		100.0%		1.00	100.0%	100.0%	100.0%	100.0%	0.0%		100.0%
Other Support	185	290	1.57	42.8%	57.2%	1.27	1.90	91.7%	91.7%	94.0%	28.6%	71.4%	55.6%	8.4%
Portering	106	118	1.11	98.3%	1.7%	1.11	1.30	87.3%	87.3%	100.0%	78.8%	21.2%	79.3%	50.0%
Support	1,545	1,966	1.27	28.4%	71.6%	1.19	1.31	91.4%	87.3%	93.0%	48.2%	51.8%	71.0%	39.2%

Maintenance	222	238	1.07	94.5%	5.5%	1.06	1.32	94.1%	94.1%	100.0%	83.6%	16.4%	86.2%	38.5%
Technical Services	7	7	0.99	57.1%	42.9%	0.98	1.00	100.0%	100.0%	100.0%	100.0%	0.0%	100.0%	100.0%
Maintenance/ Technical	229	245	1.07	93.5%	6.5%	1.06	1.24	94.3%	93.9%	100.0%	84.1%	15.9%	86.5%	50.0%
General Support	1,774	2,211	1.25	35.6%	64.4%	1.15	1.31	91.7%	89.2%	93.1%	52.2%	47.8%	75.5%	39.3%
HCA, Nurse's Aide, etc.	11,288	13,133	1.16	21.5%	78.5%	1.09	1.19	85.2%	85.2%	85.1%	55.6%	44.4%	70.4%	51.6%
Health & Social Care Assistants	37	42	1.15	28.6%	71.4%	1.02	1.20	88.1%	88.1%	86.7%	69.0%	31.0%	100.0%	56.7%
Health Care Assistants	11,325	13,175	1.16	21.5%	78.5%	1.09	1.19	85.2%	85.5%	85.1%	55.7%	44.3%	70.6%	51.6%
Home Help	3,249	5,343	1.64	3.5%	96.5%	1.64	1.64	80.8%	68.6%	81.2%	9.6%	90.4%	11.9%	9.5%
Care, other	1,734	2,070	1.19	26.1%	73.9%	1.15	1.21	88.5%	86.7%	89.2%	61.0%	39.0%	74.1%	56.3%
Patient & Client Care	16,307	20,588	1.26	17.3%	82.7%	1.12	1.30	84.4%	84.8%	84.3%	44.2%	55.8%	68.0%	39.3%

Employment by WTE, Headcount, Gender, Full-Time /Part-Time etc.: Jul 2020

Social Care Services CHO	WTE	Headcount	WTE: no.	% Male	% female	Male WTE: no.	Female WTE: no.	% Total Perm	% Male Perm	% Female Perm	% Total Full Time	% Total Part Time	% Male FT	% Female FT
Overall	31,892	38,801	1.22	16.2%	83.8%	1.11	1.24	88.0%	87.0%	88.2%	52.4%	47.6%	72.1%	48.6%
CHO 1	3,421	4,048	1.18	15.9%	84.1%	1.10	1.20	77.6%	77.6%	76.5%	57.8%	42.2%	80.5%	53.5%
HSE	1,811	2,167	1.20	13.4%	86.6%	1.04	1.22	87.3%	87.3%	87.7%	49.8%	50.2%	88.3%	88.3%
Section 38	1,265	1,597	1.26	21.4%	78.6%	1.16	1.29	79.5%	79.5%	79.2%	37.8%	62.2%	45.3%	45.3%
CHO 2	3,077	3,764	1.22	16.8%	83.2%	1.10	1.25	84.0%	84.0%	84.3%	44.7%	55.3%	65.1%	40.6%
HSE	1,187	1,545	1.30	12.3%	87.7%	1.05	1.35	91.4%	91.4%	92.6%	50.6%	49.4%	87.9%	87.9%
Section 38	1,761	2,081	1.18	11.8%	88.2%	1.15	1.19	84.3%	84.3%	84.9%	38.5%	61.5%	40.4%	40.4%
CHO 3	2,948	3,626	1.23	12.0%	88.0%	1.11	1.25	87.3%	87.3%	88.2%	43.7%	56.3%	61.1%	41.3%
HSE	3,170	4,264	1.35	12.0%	88.0%	1.17	1.37	99.9%	99.9%	99.9%	32.7%	67.3%	65.1%	65.1%
Section 38	2,193	2,642	1.20	19.0%	81.0%	1.15	1.22	84.6%	84.6%	85.6%	62.9%	37.1%	69.6%	69.6%
CHO 4	5,363	6,906	1.29	14.7%	85.3%	1.16	1.31	94.0%	94.0%	94.7%	44.3%	55.7%	67.3%	40.3%
HSE	2,060	2,581	1.25	9.3%	90.7%	1.11	1.27	99.4%	99.4%	99.4%	47.3%	52.7%	75.9%	75.9%
Section 38	1,132	1,320	1.17	21.0%	79.0%	1.09	1.19	84.2%	84.2%	83.6%	45.9%	54.1%	59.9%	59.9%
CHO 5	3,192	3,901	1.22	13.3%	86.7%	1.10	1.24	94.3%	94.3%	94.5%	46.9%	53.1%	67.4%	43.7%
HSE	596	667	1.12	20.8%	79.2%	1.06	1.14	77.5%	77.5%	79.2%	74.2%	25.8%	88.5%	88.5%
Section 38	1,417	1,599	1.13	24.0%	76.0%	1.10	1.14	94.7%	94.7%	94.2%	69.9%	30.1%	79.9%	79.9%
CHO 6	2,013	2,266	1.13	23.0%	77.0%	1.09	1.14	89.6%	89.6%	89.7%	71.2%	28.8%	82.2%	67.9%
HSE	1,157	1,436	1.24	14.6%	85.4%	1.13	1.26	87.5%	87.5%	87.9%	62.7%	37.3%	79.4%	79.4%
Section 38	2,885	3,419	1.19	23.2%	76.8%	1.11	1.21	88.0%	88.0%	88.4%	67.7%	32.3%	81.7%	81.7%
CHO 7	4,042	4,855	1.20	20.6%	79.4%	1.11	1.23	87.9%	87.9%	88.2%	66.2%	33.8%	81.2%	62.3%
HSE	2,113	2,656	1.26	12.6%	87.4%	1.15	1.27	80.8%	80.8%	80.2%	50.8%	49.2%	77.0%	77.0%
Section 38	1,549	1,888	1.22	21.0%	79.0%	1.14	1.24	95.0%	95.0%	95.0%	40.4%	59.6%	49.7%	49.7%
CHO 8	3,662	4,544	1.24	16.1%	83.9%	1.14	1.26	86.7%	86.7%	86.0%	46.5%	53.5%	62.2%	43.5%
HSE	1,129	1,275	1.13	24.9%	75.1%	1.07	1.15	83.9%	83.9%	84.4%	77.3%	22.7%	88.7%	88.7%
Section 38	2,973	3,537	1.19	12.6%	87.4%	1.11	1.20	88.7%	88.7%	89.1%	52.5%	47.5%	67.6%	67.6%
CHO 9	4,102	4,812	1.17	15.9%	84.1%	1.09	1.19	87.4%	87.4%	88.0%	59.0%	41.0%	76.3%	55.8%
other Community Services	72	79	1.10	29.1%	70.9%	1.08	1.11	82.3%	82.3%	80.4%	86.1%	13.9%	91.3%	83.9%

Summary Staff Movement: July 2020

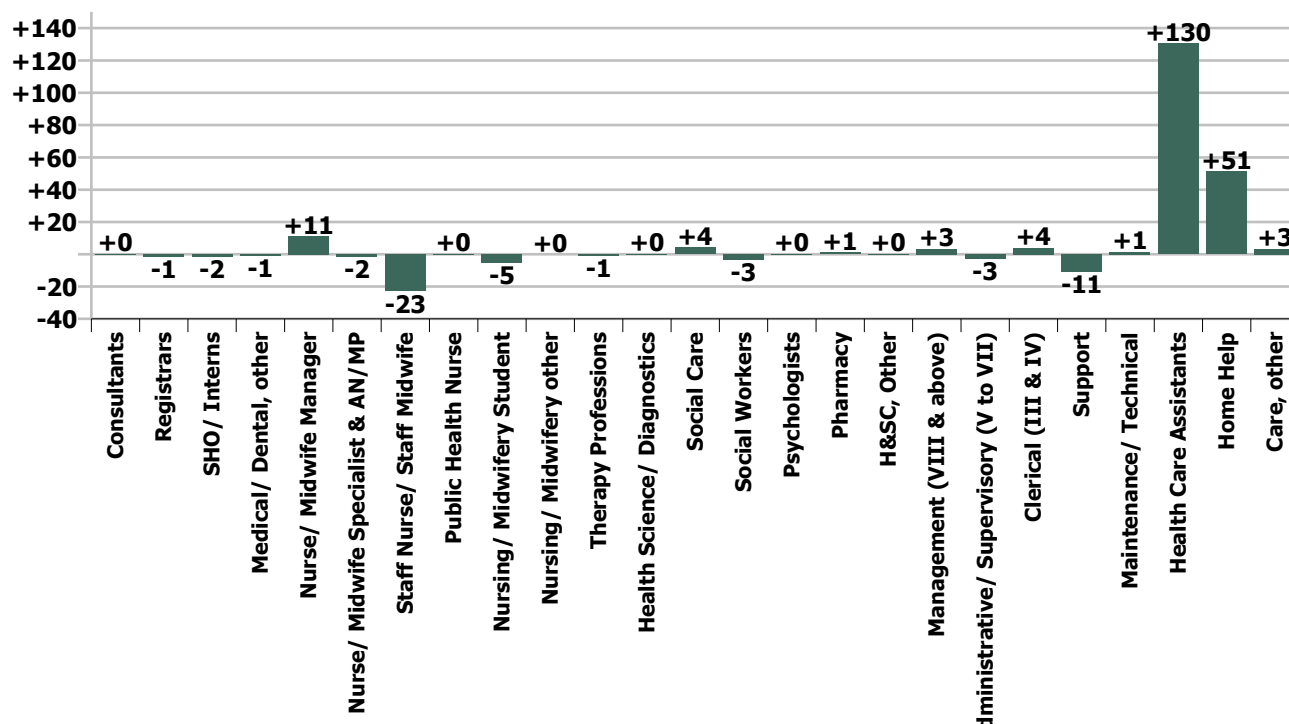
Month-on-month
Summary

WTE change since Jun 20	% change since Jun 20	overall	Consultants	Registrars	SHO/ Interns	Medical/ Dental, other	Medical & Dental	Nurse/ Midwife Manager	Nurse/ Midwife Specialist & AN/MP	Staff Nurse/ Staff Midwife	Public Health Nurse	Nursing/ Midwifery Student	Nursing/ Midwifery other	Nursing & Midwifery	Therapy Professions	Health Science/ Diagnostics	Social Care	Social Workers	Psychologists	Pharmacy	H&SC, Other	Health & Social Care Professionals	Management (VIII & above)	Administrative/ Supervisory (V to VII)	Clerical (III & IV)	Management & Administrative	Support	Maintenance/ Technical	General Support	Health Care Assistants	Home Help	Care, other	Patient & Client Care
Overall	+0.5%	+160	+0.1	-1.4	-1.7	-0.8	-3.8	+11.2	-1.7	-22.9	+0.1	-5.1	+0.1	-18.3	-0.8	+0.1	+4.1	-3.4	+0.1	+1.2	+0.3	+1.6	+3.3	-2.6	+3.9	+4.5	-10.8	+1.4	-9.4	+130.5	+51.3	+3.5	+185.3
CHO 1	+1.2%	+40					0.0	+3.9	-1.0	+0.1		-0.7	+0.0	+2.3	-0.2	+0.1	+0.1	-0.1	+0.1		+0.8	+0.6		-1.1	+4.5	+3.4	+0.6		+0.6	+25.5	+5.8	+1.5	+32.9
Disabilities	+0.3%	+4	-0.1	+0.2			+0.1	+0.8	-1.1	-1.5		+1.0		-0.8	-1.4		-0.3	-0.5	-1.1		-0.7	-4.0	+1.0	-0.1	-1.0	-0.1	-4.6		-4.6	+10.2		+3.6	+13.8
Older People	+0.9%	+14				-0.4	-0.4	-2.0	+0.0	-0.7				-2.6	+1.2			+0.9				+2.1		+0.4	-2.6	-2.2	+0.3	+0.4	+0.7	+15.6	-1.9	+2.6	+16.3
CHO 2	+0.6%	+18	-0.1	+0.2		-0.4	-0.3	-1.2	-1.0	-2.2		+1.0		-3.5	-0.1		-0.3	+0.3	-1.1		-0.7	-1.9	+1.0	+0.3	-3.6	-2.3	-4.3	+0.4	-3.9	+25.8	-1.9	+6.3	+30.1
Disabilities	+0.4%	+8	+0.6				+0.6	-1.6		-0.8		-0.1		-2.5	+2.1		+7.5	-0.9	+1.0		-0.0	+9.7		+2.3	-0.5	+1.8	+0.0	+2.1	+2.2	-6.4		+2.5	-3.9
Older People	+0.1%	+1						+0.7	-0.1	-1.5				-0.8	-1.1	+0.0		-0.2				-1.3	-0.1	-2.1	+0.0	-2.2	+1.0	-0.0	+1.0	+6.4	-1.3	-1.0	+4.1
CHO 3	+0.3%	+9	+0.6				+0.6	-0.9	-0.1	-2.3		-0.1		-3.4	+0.9	+0.0	+7.5	-1.1	+1.0		-0.0	+8.4	-0.1	+0.2	-0.5	-0.5	+1.0	+2.1	+3.2	+0.0	-1.3	+1.5	+0.2
Disabilities	+0.8%	+21						-0.3	+1.0	-3.2				-2.6	+0.0		+0.9	-0.3	-0.1		+1.2	+1.7		-0.2	+1.0	+0.8	+1.4	+1.4	+13.7		+5.4	+19.2	
Older People	-0.6%	-18				-0.1	-0.0	+3.2	-0.2	-1.7		-1.0		+0.2	-1.0			-0.5		+0.2		-1.3		+0.1	-0.7	-0.6	+5.3	+5.6	-23.4	-3.7	-21.4		
CHO 4	+0.1%	+3				-0.1	-0.1	+2.9	+0.8	-5.0		-1.0		-2.3	-0.9		+0.9	-0.8	-0.1	+0.2	+1.2	+0.5		-0.1	+0.3	+0.2	+6.7	+6.7	+19.4	-23.4	+1.7	-2.2	
Disabilities	+1.8%	+27	-1.0				-1.0	+1.8	+1.0	-5.3	-0.0	-4.2		-6.8	-1.6		+0.8	-1.7	+0.7		+1.0	-0.8	-0.7	-1.5	-1.8	-4.0	+0.1	+0.1	+31.6	+10.5	-2.7	+39.4	
Older People	+4.8%	+78				+0.0	+0.0	+0.1		+1.1	+0.1			+1.4	-0.9			+0.2				-0.8		-0.1	+0.5	+0.3	-0.4	+0.1	-0.3	+17.5	+60.1	-0.4	+77.1
CHO 5	+3.4%	+105	-1.0			+0.0	-0.9	+1.9	+1.0	-4.2	+0.0	-4.2		-5.4	-2.5		+0.8	-1.5	+0.7		+1.0	-1.5	-0.7	-1.6	-1.3	-3.7	-0.3	+0.1	-0.2	+49.1	+70.5	-3.1	+116.5
Disabilities	+0.8%	+9					-0.0			-4.7				-4.8	+0.6		+2.3	-0.0	+0.3		+0.1	+3.1	+1.2	-1.1	+3.3	+3.4	+5.5	-1.2	+4.3	+7.3		-4.0	+3.3
Older People	-1.0%	-8					+0.2			-1.0				-0.8	-1.1			+0.5		+0.1		-0.5			+0.6	+0.6	+0.9		+0.9	-8.4		+0.2	-8.1
CHO 6	+0.1%	+1					0.0	+0.1		-5.7				-5.6	-0.5		+2.3	+0.5	+0.3	+0.1	+0.1	+2.6	+1.2	-1.1	+3.9	+3.9	+6.4	-1.2	+5.1	-1.1		-3.8	-4.8
Disabilities	+1.2%	+36			-0.5		-0.5	+2.8	-1.8	+6.1				+7.1	+1.9		+8.8	+0.2	+0.5	+0.5	+0.5	-2.0	+9.9	-1.0	+1.5	+1.5	+2.0	+1.5	+1.5	+17.3	+0.1	-1.7	+15.7
Older People	+1.2%	+12					+4.2	+0.5	-3.8			+1.0		+2.0	-0.1			+0.1				-0.1	-0.1	-0.9	-0.3	-1.4	+4.2	+4.2	+6.6	+0.6	+0.3	+7.4	
CHO 7	+1.2%	+48			-0.5		-0.5	+7.0	-1.3	+2.3		+1.0		+9.1	+1.8		+8.8	+0.3	+0.5	+0.5	-2.0	+9.8	-1.1	+0.5	+1.2	+0.7	+5.7		+5.7	+23.9	+0.6	-1.4	+23.1
Disabilities	-1.5%	-34		+0.8			+0.8	-2.6	-0.1	-3.9		-0.2	-0.0	-6.7	-1.3		-7.2	-0.0	-1.9		-0.1	-10.6	+1.7	-1.3	-0.9	-0.5	-2.2	-0.0	-2.2	-14.7	+1.5	-1.3	-14.5
Older People	+0.0%	+1					+1.9			-4.9	+0.0			-3.0	+0.2			-0.0				+0.2	+0.2	+0.2	+0.1	+0.5	-0.8		-0.8	+3.5	-0.6	+0.8	+3.7
CHO 8	-0.9%	-33		+0.8			+0.8	-0.6	-0.1	-8.9	+0.1	-0.2		-9.7	-1.1		-7.2	-0.1	-1.9		-0.1	-10.5	+1.9	-1.1	-0.8	-0.0	-3.0		-3.0	-11.2	+0.9	-0.5	-10.9
Disabilities	-1.4%	-45	+0.1	-1.1	-0.2	-0.3	-1.5	+1.5	+1.0	-3.5		-0.9		-1.9	+0.4		-8.8	-1.1	+0.7		-0.0	-8.8		-0.2	-0.3	-0.5	-23.1		-23.1	-10.1		+1.3	-8.8
Older People	+1.5%	+14	+0.4	-1.3	-1.0		-1.9	-3.3	-1.0	+6.3				+2.0	+1.5			+0.4		+0.5		+2.4		+1.9	+1.1	+3.0	-0.5		-0.5	+9.1			+9.1
CHO 9	-0.7%	-31	+0.5	-2.4	-1.2	-0.3	-3.4	-1.9		+2.9		-0.9		+0.2	+1.9		-8.8	-0.7	+0.7	+0.5	-0.0	-6.4		+1.7	+0.8	+2.5	-23.6	+0.0	-23.6	-1.0		+1.3	+0.3
Disabilities	-0.2%	-0																					-0.0			-0.0							
Older People	+0.4%	+0																					+1.1	-0.3	-0.5	+0.3							
other Community Services	+0.4%	+0																					+1.0	-0.3	-0.5	+0.3							0.0
		+0.5%	+0.4%	-7.3%	-7.2%	-0.8%	-2.2%	+0.7%	-1.8%	-0.4%	+0.5%	-2.8%	+0.2%	-0.3%	-0.1%	+0.4%	+0.2%	-1.0%	+0.1%	+5.1%	+0.3%	+0.0%	+1.3%	-0.4%	+0.3%	+0.2%	-0.7%	+0.6%	-0.5%	+1.2%	+1.6%	+0.2%	+1.1%

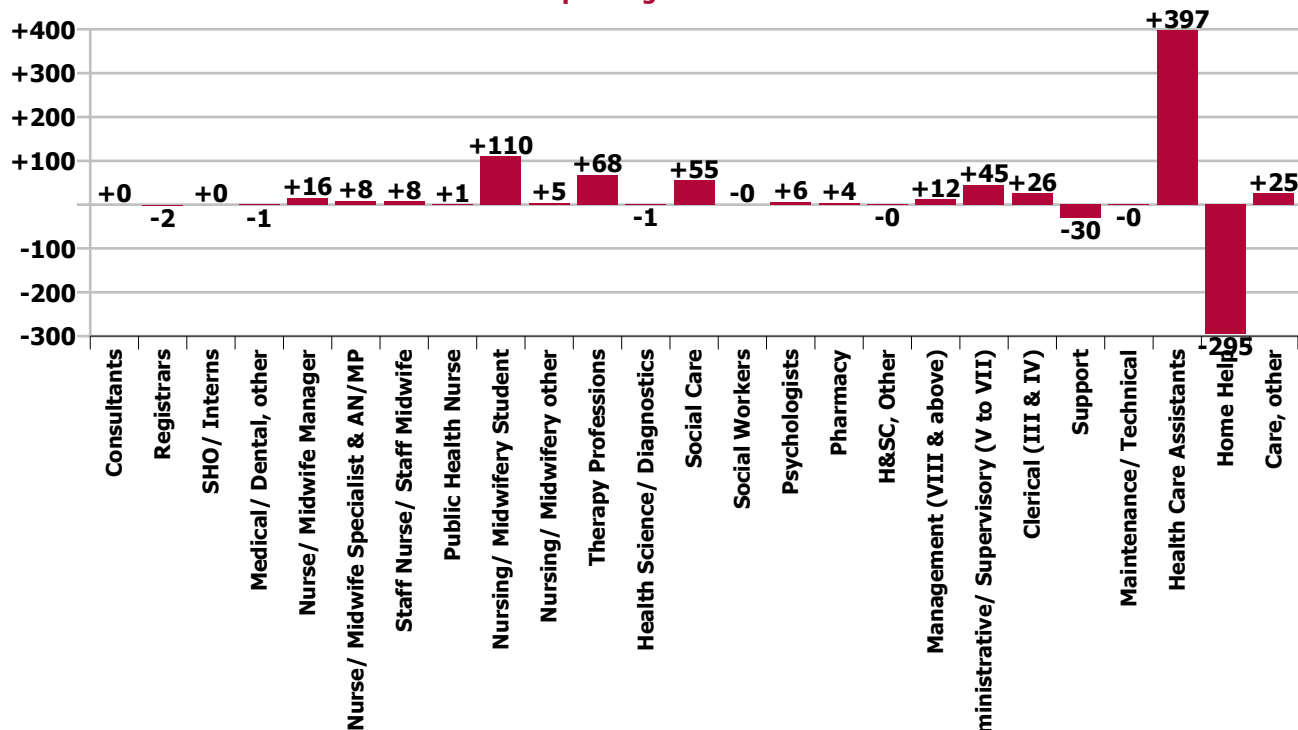
Year-on-year Summary

WTE change since Jul 19	% change since Jul 19	overall	Consultants	Registrars	SHO/ Interns	Medical/ Dental, other	Medical & Dental	Nurse/ Midwife Manager	Nurse/ Midwife Specialist & AN/MP	Staff Nurse/ Staff Midwife	Public Health Nurse	Nursing/ Midwifery Student	Nursing/ Midwifery other	Nursing & Midwifery	Therapy Professions	Health Science/ Diagnostics	Social Care	Social Workers	Psychologists	Pharmacy	H&SC, Other	Health & Social Care Professionals	Management (VIII & above)	Administrative Supervisory (V to VII)	Clerical (III & IV)	Management & Administrative	Support	Maintenance/ Technical	General Support	Health Care Assistants	Home Help	Care, other	Patient & Client Care	
Overall	+1.4%	+455	+0	-2	+0	-1	-3	+16	+8	+8	+1	+110	+5	+147	+68	-1	+55	-0	+6	+6	+4	-0	+131	+12	+45	+26	+83	-30	-0	-31	+397	-295	+25	+128
Disabilities	+2.6%	+39				+0	+0	+3	+3	-10		+27	-0	+23	+5		+0	+6	+1			-3	+10	+1	+7	+4	+13	-0	-0	-0	-6	-1	+1	-6
Older People	+1.8%	+33				+1	+1	-5	+2	+2			+1	+0	+0	-0		-0					+0	+0	+0	-2	-6	-1	-7	+78	-37	-1	+40	
CHO 1	+2.1%	+71				+1	+1	-2	+5	-8		+27	+1	+23	+6	-0	+0	+6	+1			-3	+10	+1	+8	+2	+11	-7	-1	-8	+72	-38	+1	+35
Disabilities	+1.2%	+17		+0		+0	+0	+6	-1	-2		+1		+4	-5		+20	-0	-2			-3	+10	-0	+1	-4	-3	-10	+0	-10	+11		+5	+16
Older People	+1.6%	+25				-1	-1	+4	+1	-3				+2	-2			+0				+0	-1	-1	+1	-8	-4	+0	-4	+53	-18	+2	+37	
CHO 2	+1.4%	+42		+0		-1	-1	+10	+0	-5		+1		+6	-7		+20	-0	-2	+0	+0	-3	+8	-1	+2	-11	-11	-14	+0	-14	+64	-18	+6	+53
Disabilities	+4.5%	+83	-0				-0	+7	+1	-2		+18		+23	+6	+1	+13	-4	+5	-4	+5	-0	+21	-1	+2	+3	+5	-3	+4	+1	+27		+5	+32
Older People	+5.6%	+56					+1	-0	-17	+1				-16	-0	+0		-2					-2	+1	+2	+1	+4	-1	-1	-2	+34	+33	+3	+71
CHO 3	+4.9%	+139	-0				-0	+7	+0	-19	+1	+18		+7	+6	+1	+13	-5	+5		-0	+19	+1	+4	+4	+9	-4	+4	-0	+61	+33	+9	+103	
Disabilities	+1.3%	+33					-3	+1	+1	-8		+17		+7	-4		+5	+0	-0		+3	+4	+2	+3	+0	+6	+3	-1	+2	+4		+11	+14	
Older People	-2.3%	-67		+1	-1	+2	+2	-0	+1	+0	-0			+1	+2	+0		-0		+1	+2	+3	+1	+3	-1	+3	+16	+0	+16	+46	-136	-2	-92	
CHO 4	-0.6%	-34		+1	-1	+2	+2	-3	+2	-7	-0	+17		+9	-2	+0	+5	-0	-0	+1	+3	+7	+4	+6	-1	+9	+19	-1	+18	+49	-136	+9	-78	
Disabilities	+3.3%	+48	-1			-0	-1	+1	+1	+9	+1	+1		+13	+1		-16	+1	+1		+1	-12	+1	+4	-0	+5	-7	-3	-10	+45	-8	+16	+53	
Older People	-0.0%	-0				-2	-2	-1	-0	+13	+0			+12	-1			+0		+1		+0	+1	-1	-1	-1	-7	+0	-7	+90	-93	-1	-3	
CHO 5	+1.5%	+48	-1			-2	-3	+1	+1	+22	+1	+1		+25	+1		-16	+1	+1	+1	+1	-11	+2	+3	-1	+4	-14	-3	-17	+135	-101	+15	+50	
Disabilities	-0.3%	-3					-2			-16				-17	+5		-13	-3	-1		+0	-11	+0	+3	+12	+15	+3	+18	+5			-13	-8	
Older People	+1.5%	+12					-3			+5				+2	-2			-0		+0		-2	-1	-2	-1	-5	+0	+2	+2	+17		-1	+16	
CHO 6	+0.5%	+9						-5		-11				-16	+4		-13	-3	-1	+0	+0	-13	-1	+1	+11	+11	+15	+4	+20	+22		-15	+7	
Disabilities	+2.1%	+61		+1	+0		+1	-4	-2	+12		+8		+13	+26		+6	+2	+0	+2		+36	+5	+4	+9	+18	-6	-0	-6	-5	-2	+6	-1	
Older People	+2.0%	+20				-1	-1	+4	+0	+21		+3		+28	-3			-1				-4	+2	+1	+5	+8	-5	-1	-6	-17	+12	+1	-4	
CHO 7	+2.0%	+81		+1	+0	-1	-0	-0	-2	+33		+11		+41	+23		+6	+1	+0	+2		+32	+7	+5	+14	+25	-11	-1	-12	-21	+10	+6	-5	
Disabilities	+0.4%	+9		+1			+1	-3	+0	-1		+18		+15	+7		+5	+1	-4		+0	+10	+1	+6	+4	+12	-6	-0	-6	-18	+0	-5	-23	
Older People	-1.0%	-15				-0	-0	+1	-2	-0	-0			+0	+0			-1		-1	-1	-1	+2	+1	+1	+4	+2	-0	+2	+22	-45	+2	-21	
CHO 8	-0.2%	-7			+1	-0	-0	-1	+0	-1	-0	+18	+2	+16	+7		+5	+0	-4	-1	+0	+9	+3	+7	+5	+16	-4	-0	-4	+4	-45	-2	-44	
Disabilities	+2.2%	+68	+0	-3	+2		-0	+5	+1	+2		+18	+2	+27	+15	-2	+35	+2	+6		+1	+1	+55	-2	+5	+5	+8	-10	-3	-13	-7		-2	-10
Older People	+4.4%	+40	+1	-2	-1		-2	+5	+1	+4	-0	-1		+9	+16	-1		-1		+1	+2	+15	+1	+1	+1	+2	-2		-2	+18		-1	+17	
Disabilities	+2.7%	+108	+1	-4	+1		-2	+9	+2	+5	-0	+18	+2	+36	+31	-3	+34	+1	+6	+1	+1	+70	-2	+7	+6	+10	-12	-3	-14	+10			-3	+7
Older People	-3.3%	-2																						-2	+2	-3	-2							
other Community Services	-3.1%	-2																							-2	+2	-3	-2						
		+1.4%	+0.4%	-10.5%	+0.8%	-1.2%	-1.8%	+1.0%	+9.7%	+0.1%	+3.9%	+158.0%	+19.4%	+2.1%	+6.7%	-4.0%	+2.1%	-0.1%	+3.0%	+21.4%	-0.5%	+3.1%	+4.8%	+7.2%	+2.1%	+4.0%	-1.9%	-0.2%	-1.7%	+3.6%	-8.3%	+1.5%	+0.8%	

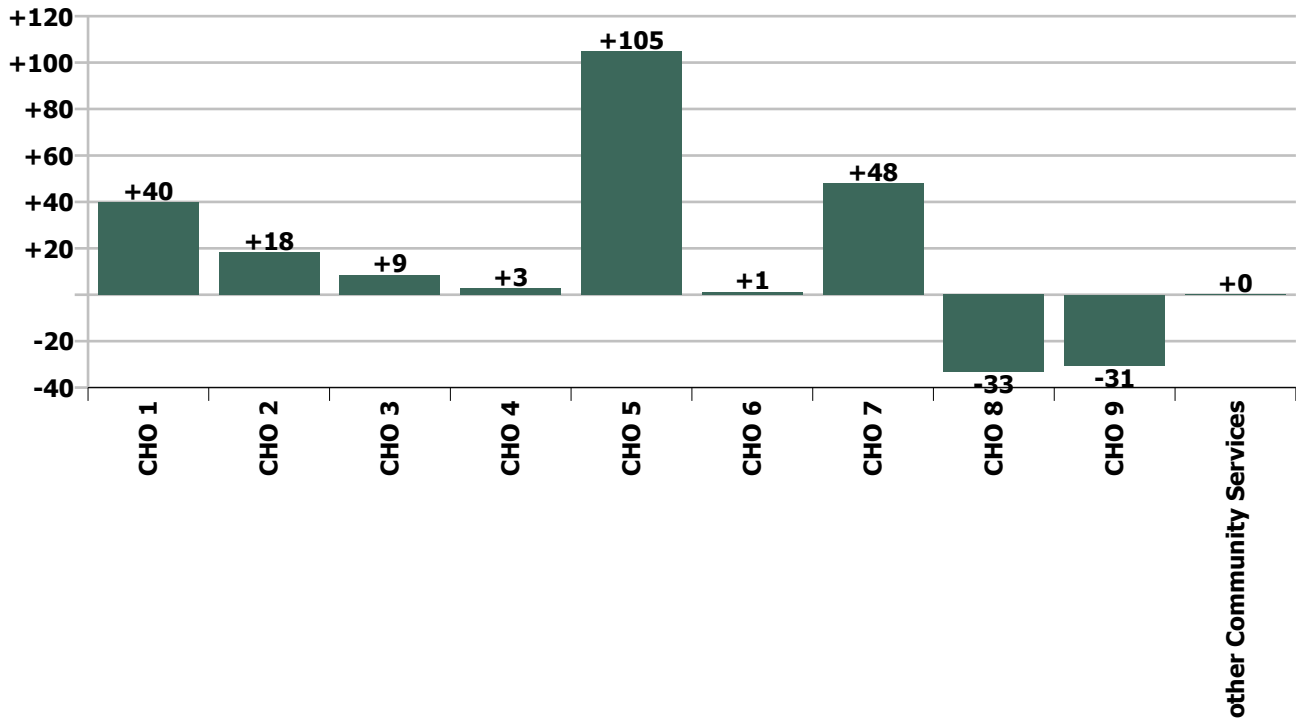
Staff Group change since: Jun 2020



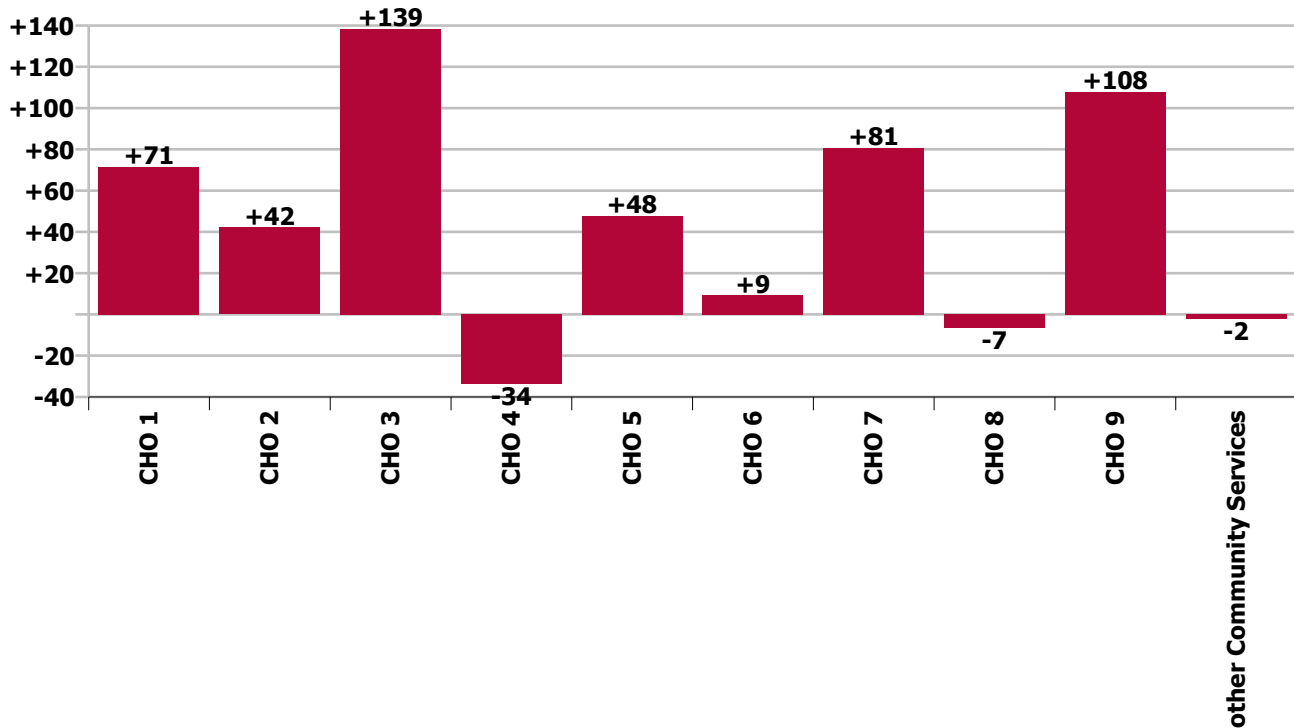
Staff Group change since: Jul 2019



CHO change since: Jun 2020



CHO change since: Jul 2019



Longitudinal Employment Levels by Grade Group - Oct 2013 to Jul 2020

Jul 2020 (Oct 2013 figure: 26,374)	WTE Jul 2020	WTE change since Oct 13	WTE change since Dec 15	WTE change since Dec 16	WTE change since Dec 17	WTE change since Dec 18	WTE change since Dec 19	% change since Oct 13	% change since Dec 15	% change since Dec 16	% change since Dec 17	% change since Dec 18	% change since Dec 19
Overall	31,892	+5,518	+3,570	+2,655	+1,391	+767	+356	+20.9%	+12.6%	+9.1%	+4.6%	+2.5%	+1.1%
Consultant Medicine	5	+1	-4	-6	-5	+1	+1	+28.1%	-43.9%	-58.0%	-50.0%	+27.8%	+27.8%
Consultant Paediatrics	3	+0	-0	-0	-0			+6.6%	-3.5%	-5.0%	-2.9%		
Consultant Psychiatry	19	-10	-3	-3	-4	+1	-2	-34.1%	-12.0%	-12.3%	-18.6%	+7.7%	-7.4%
Consultant Radiology		-0						-100.0%	-100.0%	-100.0%	-100.0%	-100.0%	-100.0%
Consultant Surgery		-1	-1	-1	-0	-0		-100.0%	-100.0%	-100.0%	-100.0%	-100.0%	-100.0%
Consultants	27	-10	-7	-10	-9	+2	-1	-27.2%	-21.6%	-27.2%	-25.5%	+9.2%	-2.0%
Registrar	9	-8	-5	-2	-4	-4	-4	-45.4%	-35.7%	-21.3%	-32.9%	-28.5%	-32.9%
Senior Registrar	4			+1			+1			+33.3%			+33.3%
Specialist Registrar	5	+1	+0	+1	+0	+3	-1	+28.5%	+2.8%	+28.5%	+2.8%	+157.0%	-14.3%
Registrars	18	-6	-5	-0	-4	-0	-4	-26.0%	-21.1%	-1.7%	-19.1%	-2.6%	-19.1%
SHO/ Interns	21	+1	+5	+5	+4	+2	-1	+4.0%	+34.6%	+33.2%	+25.7%	+12.6%	-3.2%
Dentists			-1					-100.0%	-100.0%	-100.0%	-100.0%	-100.0%	-100.0%
Other Medical	99	-2	+1	-1	-1	-0	-11	-2.0%	+1.3%	-1.3%	-0.7%	-0.1%	-10.3%
Medical/ Dental, other	99	-2	+1	-1	-1	-0	-11	-2.0%	+0.7%	-1.3%	-0.7%	-0.1%	-10.3%
Medical & Dental	166	-18	-6	-6	-10	+4	-17	-9.6%	-3.6%	-3.7%	-5.6%	+2.5%	-9.3%
Clinical Nurse/ Midwife Manager	1,355	+80	+29	+9	+18	+22	+36	+6.2%	+2.2%	+0.7%	+1.3%	+1.7%	+2.7%
Director Nursing/Midwifery, Assistant	144	+24	+22	+14	+15	+19	+1	+20.0%	+17.8%	+11.0%	+12.0%	+15.6%	+0.6%
Director of Nursing/Midwifery	141	+26	+12	+12	+12	+20	+0	+22.9%	+9.7%	+9.2%	+9.7%	+16.5%	+0.0%
Nurse/ Midwife Manager	1,639	+130	+63	+35	+46	+62	+37	+8.6%	+4.0%	+2.2%	+2.9%	+3.9%	+2.3%
Advanced Nurse/ Midwife Practitioner	15	+11	+12	+11	+10	+6	+2	+279.1%	+390.3%	+267.8%	+194.2%	+63.8%	+15.6%
Clinical Nurse/ Midwife Specialist	81	-17	-9	-2	+2	-2	+6	-16.9%	-9.9%	-2.7%	+2.6%	-2.2%	+7.3%
Nurse/ Midwife Specialist & AN/MP	96	-6	+3	+8	+12	+4	+8	-5.6%	+3.0%	+9.7%	+14.0%	+4.3%	+8.5%
Graduate Nursing/ Midwifery		-11	-13					-100.0%	-100.0%	-100.0%	-100.0%	-100.0%	-100.0%
Staff Midwives		-1	-1	-0	-2			-100.0%	-100.0%	-100.0%	-100.0%	-100.0%	-100.0%
Staff Nurse [Intellectual Disability]	1,573	-184	-208	-153	-131	-112	-24	-10.5%	-11.7%	-8.9%	-7.7%	-6.7%	-1.5%
Staff Nurse [Psychiatric]	61	-88	-49	-29	-15	-15	-27	-58.9%	-44.3%	-32.1%	-19.2%	-19.7%	-30.6%
Staff Nurses [General/ Children's]	3,501	-271	-3	-15	+15	+28	+37	-7.2%	-0.1%	-0.4%	+0.4%	+0.8%	+1.1%
Staff Nurse/ Staff Midwife	5,135	-555	-274	-198	-132	-100	-14	-9.8%	-5.1%	-3.7%	-2.5%	-1.9%	-0.3%
Public Health Nurse	20	-2	-3	-1	-1	-1	-0	-10.4%	-14.0%	-5.8%	-6.4%	-3.6%	-0.8%
Pre-registration Nurse/ Midwife Intern	7	-16	-7	-5	-5	-28	-21	-70.5%	-52.5%	-43.4%	-42.4%	-80.5%	-76.0%
Pre-registration Nurse Intern (COVID-19)	155	+155	+155	+155	+155	+155	+155	-100.0%	-100.0%	-100.0%	-100.0%	-100.0%	-100.0%
Post-registration Nurse/ Midwife Student	4	+3	+4	+4	+4	+4	+3	+293.0%	-100.0%	-100.0%	-100.0%	-100.0%	+293.0%
Nursing/ Midwifery awaiting registration	14	+14	+14	+14	-0	+14	-1	-100.0%	-100.0%	-100.0%	-3.2%	-100.0%	-8.7%
Nursing/ Midwifery Student	179	+155	+165	+167	+153	+144	+135	+645.5%	+1155.0%	+1393.4%	+594.9%	+414.7%	+306.5%
Nursing Education/Clinical	27	+0	+6	+5	+5	+5	+5	+0.6%	+25.7%	+20.9%	+21.8%	+21.4%	+21.3%
Other Nursing/ Midwifery	1	-7	-5	-4	-4			-87.1%	-84.5%	-80.0%	-80.0%		
Nursing/ Midwifery other	28	-7	+0	+1	+1	+5	+5	-19.1%	+0.1%	+2.4%	+3.0%	+20.5%	+20.4%

Jul 2020 (Oct 2013 figure: 26,374)	WTE Jul 2020	WTE change since Oct 13	WTE change since Dec 15	WTE change since Dec 16	WTE change since Dec 17	WTE change since Dec 18	WTE change since Dec 19	% change since Oct 13	% change since Dec 15	% change since Dec 16	% change since Dec 17	% change since Dec 18	% change since Dec 19
Overall	31,892	+5,518	+3,570	+2,655	+1,391	+767	+356	+20.9%	+12.6%	+9.1%	+4.6%	+2.5%	+1.1%
Nursing & Midwifery	7,097	-284	-46	+12	+78	+114	+170	-3.9%	-0.6%	+0.2%	+1.1%	+1.6%	+2.4%
Dietitians	41	+15	+19	+12	+12	+10	+6	+56.0%	+86.2%	+42.4%	+40.4%	+33.2%	+18.6%
Occupational Therapists	389	+131	+95	+42	+46	+44	+12	+50.8%	+32.4%	+12.2%	+13.4%	+12.8%	+3.1%
Physiotherapists	317	+54	+31	+16	+11	+8	+4	+20.5%	+10.7%	+5.3%	+3.6%	+2.7%	+1.2%
Podiatrists & Chiropodists	12	-1	-0	-3	-4	-3	+0	-8.7%	-0.3%	-18.5%	-25.4%	-19.4%	+0.1%
Speech & Language Therapists	322	+126	+89	+31	+16	+20	+7	+64.2%	+38.1%	+10.8%	+5.2%	+6.7%	+2.1%
Therapy Professions	1,082	+325	+234	+99	+81	+80	+29	+42.9%	+27.6%	+10.1%	+8.1%	+8.0%	+2.7%
Audiology		-7	-14	-13	-18			-100.0%	-100.0%	-100.0%	-100.0%	-100.0%	-100.0%
Clinical Engineering	12	-6	-6	-6	-6	-0	-1	-33.2%	-34.0%	-34.7%	-33.6%	-0.4%	-8.1%
Clinical Measurement	2	+1	+1	+1	+1	+1	+1	+146.0%	+146.0%	+146.0%	+146.0%	+127.8%	+103.3%
Medical Laboratory	4	+1	+1		+1			+33.3%	+33.3%		+33.3%		
Phlebotomists		-1	-1	-1	-1	-1	-1	-100.0%	-100.0%	-100.0%	-100.0%	-100.0%	-100.0%
Radiographers	6	-4	-3	-2	-3	-1	-1	-41.5%	-31.9%	-30.7%	-31.5%	-15.2%	-18.9%
Health Science/ Diagnostics	24	-15	-21	-21	-25	-1	-2	-38.6%	-46.9%	-46.7%	-51.0%	-2.8%	-8.1%
Social Care	2,621	+857	+678	+427	+272	+129	+23	+48.6%	+34.9%	+19.4%	+11.6%	+5.2%	+0.9%
Social Workers	319	+83	+55	+17	+15	+5	+2	+35.2%	+20.9%	+5.5%	+4.8%	+1.5%	+0.5%
Psychologists	215	+46	+22	+4	-9	+7	+8	+27.6%	+11.6%	+2.0%	-4.1%	+3.6%	+4.0%
Pharmacy	25	+7	+4	+5	+4	+2	+3	+34.7%	+20.6%	+22.3%	+18.0%	+8.5%	+14.8%
Counsellor Therapists	21	+8	+4	+4	+1	+3	+2	+62.8%	+24.5%	+23.0%	+6.6%	+16.6%	+9.6%
HSCP Trainees/ Students		-2	-3	-2	-1			-100.0%	-100.0%	-100.0%	-100.0%	-100.0%	-100.0%
Other Health & Social Care	50	-20	-13	-10	-10	-3	-1	-28.6%	-20.5%	-15.9%	-16.6%	-5.8%	-1.5%
Play Therapists/ Specialists	14	-4	-1	-1	-0	-2	-3	-20.6%	-4.1%	-8.5%	-1.6%	-10.4%	-15.2%
H&SC, Other	85	-18	-13	-9	-9	-2	-1	-17.3%	-12.9%	-9.9%	-10.1%	-2.1%	-1.7%
Health & Social Care Professionals	4,370	+1,285	+959	+521	+327	+221	+61	+41.6%	+28.1%	+13.5%	+8.1%	+5.3%	+1.4%
Executive Management	47	+18	+13	+11	+1	+5	+4	+62.2%	+38.1%	+30.4%	+2.3%	+12.3%	+10.0%
Senior Management (VIII & GM)	217	+88	+50	+39	+39	+24	+5	+68.3%	+30.3%	+22.0%	+22.1%	+12.5%	+2.6%
Management (VIII & above)	264	+106	+63	+50	+40	+29	+10	+67.2%	+31.6%	+23.4%	+18.1%	+12.4%	+3.8%
Middle Management (V-VII)	652	+231	+202	+156	+132	+83	+24	+54.9%	+45.0%	+31.6%	+25.4%	+14.5%	+3.9%
Other Administrative	16	-3	-0	+1	-1	-1	-0	-14.3%	-2.6%	+6.7%	-6.7%	-5.9%	-0.9%
Administrative/ Supervisory (V to VII)	668	+229	+202	+157	+131	+82	+24	+52.0%	+43.3%	+30.8%	+24.4%	+13.9%	+3.8%
Clerical (III & IV)	1,246	+265	+202	+156	+105	+28	+14	+27.0%	+19.3%	+14.3%	+9.2%	+2.3%	+1.2%
Management & Administrative	2,178	+599	+467	+363	+276	+139	+48	+38.0%	+27.3%	+20.0%	+14.5%	+6.8%	+2.3%
Catering	330	-3	+3	+4	+13	+10	+11	-0.9%	+0.9%	+1.2%	+4.0%	+3.3%	+3.5%
Household Services	923	-326	-208	-148	-88	-47	+11	-26.1%	-18.4%	-13.8%	-8.7%	-4.8%	+1.2%
Other Labs & Associated	1		-0	-0		-0			-16.7%	-6.5%		-3.8%	
Other Support	185	-54	-67	-49	-48	-44	-37	-22.6%	-26.7%	-20.9%	-20.5%	-19.2%	-16.7%
Portering	106	-34	-6	-6	-4	+1	-3	-24.3%	-5.5%	-4.9%	-3.8%	+0.8%	-2.7%
Support	1,545	-417	-279	-198	-127	-79	-18	-21.2%	-15.3%	-11.4%	-7.6%	-4.9%	-1.2%

Jul 2020 (Oct 2013 figure: 26,374)	WTE Jul 2020	WTE change since Oct 13	WTE change since Dec 15	WTE change since Dec 16	WTE change since Dec 17	WTE change since Dec 18	WTE change since Dec 19	% change since Oct 13	% change since Dec 15	% change since Dec 16	% change since Dec 17	% change since Dec 18	% change since Dec 19
Overall	31,892	+5,518	+3,570	+2,655	+1,391	+767	+356	+20.9%	+12.6%	+9.1%	+4.6%	+2.5%	+1.1%
Maintenance	222	-19	-12	-6	-11	-0	+7	-7.7%	-5.0%	-2.8%	-4.7%	-0.2%	+3.4%
Technical Services	7	+3	+2	+2	+2	+1	-1	+73.2%	+39.2%	+39.2%	+39.2%	+16.4%	-12.3%
Maintenance/ Technical	229	-16	-10	-4	-9	+1	+6	-6.4%	-4.1%	-1.9%	-3.8%	+0.2%	+2.8%
General Support	1,774	-432	-288	-203	-136	-79	-12	-19.6%	-14.0%	-10.3%	-7.1%	-4.3%	-0.7%
HCA, Nurse's Aide, etc.	11,288	+3,289	+2,132	+1,488	+1,027	+626	+449	+41.1%	+23.3%	+15.2%	+10.0%	+5.9%	+4.1%
Health & Social Care Assistants	37	+4	-2	-0	+2	+1	+6	+12.2%	-4.1%	-0.2%	+4.6%	+4.2%	+18.7%
Health Care Assistants	11,325	+3,293	+2,131	+1,488	+1,028	+628	+455	+41.0%	+23.2%	+15.1%	+10.0%	+5.9%	+4.2%
Home Help	3,249	+802	+156	+358	-231	-284	-302	+32.8%	+5.0%	+12.4%	-6.6%	-8.0%	-8.5%
Ambulance Staff		-8						-100.0%	-100.0%	-100.0%	-100.0%	-100.0%	-100.0%
Care, other	1,734	+281	+197	+122	+58	+25	-47	+19.4%	+12.8%	+7.6%	+3.5%	+1.4%	-2.7%
Patient & Client Care	16,307	+4,368	+2,484	+1,969	+856	+368	+106	+36.6%	+18.0%	+13.7%	+5.5%	+2.3%	+0.7%

Source: Health Service Personnel Census