

Social Care Services Employment Report: July 2021

Employment by Staff Group

Jul 2021 (Dec 2020 figure: 32,359)	WTE Jun 2021	WTE Jul 2021	WTE change since Jun 21	% change since Jun 21	WTE change since Dec 20	WTE change since Jul 20
Overall	32,737	32,780	+42	+0.1%	+420	+888
Consultants	25	25	-0	-1.6%	-4	-2
Registrars	20	22	+2	+9.0%	+5	+4
SHO/ Interns	22	22	-0	-0.8%	-1	+0
Medical/ Dental, other	98	98	-0	-0.2%	-20	-1
Medical & Dental	166	167	+1	+0.6%	-20	+1
Nurse/ Midwife Manager	1,670	1,680	+10	+0.6%	+36	+40
Nurse/ Midwife Specialist & AN/MP	105	106	+1	+0.7%	+4	+10
Staff Nurse/ Staff Midwife	5,273	5,254	-18	-0.3%	+37	+120
Public Health Nurse	23	22	-0	-1.0%	+2	+3
<i>Pre-registration Nurse/ Midwife Intern</i>	78	77.62	-0	-0.4%	+75	+71
<i>Pre-registration Nurse Intern (COVID-19)</i>	5	1.75	-3	-64.8%	-30	-153
<i>Post-registration Nurse/ Midwife Student</i>				-100.0%		-4
<i>Nursing/ Midwifery awaiting registration</i>	4	3.39	-0	-11.0%	-11	-10
Nursing/ Midwifery Student	87	83	-4	-4.6%	+34	-96
Nursing/ Midwifery other	30	27	-3	-8.8%	-0	-0
Nursing & Midwifery	7,187	7,173	-15	-0.2%	+113	+76
Therapy Professions	1,159	1,144	-15	-1.3%	+53	+62
Health Science/ Diagnostics	25	26	+0	+1.9%	+1	+2
Social Care	2,860	2,899	+38	+1.3%	+107	+278
Social Workers	331	327	-4	-1.2%	-1	+8
Psychologists	234	233	-2	-0.7%	+3	+18
Pharmacy	25	27	+2	+6.6%	+4	+2
H&SC, Other	74	72	-2	-2.6%	-5	-13
Health & Social Care Professionals	4,708	4,727	+19	+0.4%	+160	+357
Management (VIII & above)	297	299	+2	+0.7%	+16	+35
Administrative/ Supervisory (V to VII)	741	751	+10	+1.3%	+48	+82
Clerical (III & IV)	1,296	1,287	-9	-0.7%	+15	+41
Management & Administrative	2,333	2,336	+3	+0.1%	+79	+158
Support	1,454	1,426	-28	-2.0%	-38	-119
Maintenance/ Technical	228	223	-5	-2.3%	-5	-6
General Support	1,682	1,649	-34	-2.0%	-42	-125
Health Care Assistants	11,385	11,393	+9	+0.1%	+173	+69
Home Help	3,399	3,453	+55	+1.6%	-71	+205
Care, other	1,876	1,882	+5	+0.3%	+29	+148
Patient & Client Care	16,660	16,728	+68	+0.4%	+130	+421

Social Care Services Employment by Administration (HSE / S38): July 2021

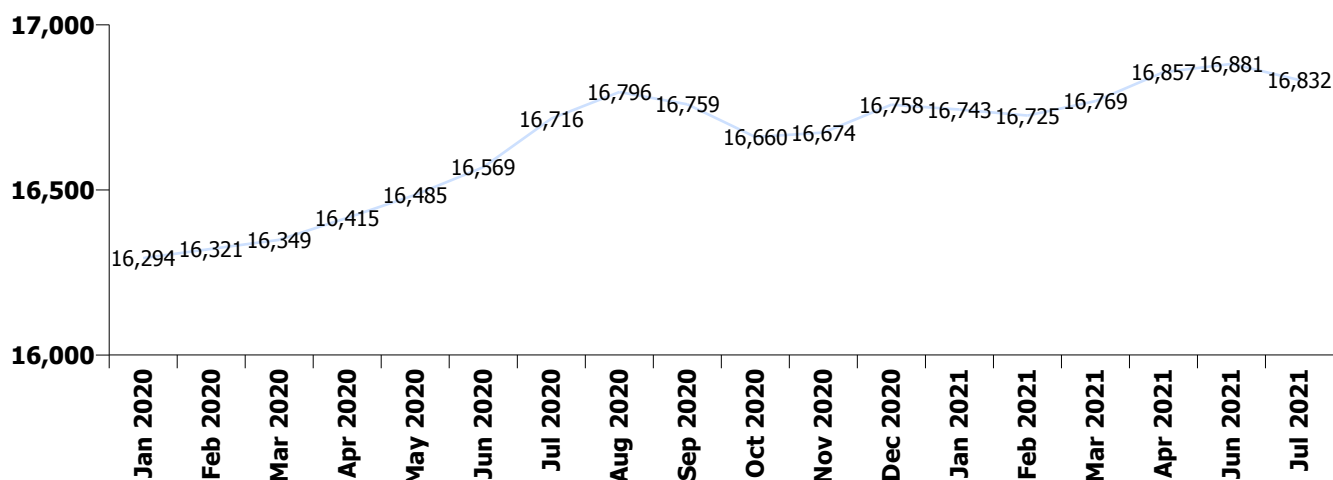
Jul 2021 (Dec 2020 figure: 32,359)	WTE Jun 2021	WTE Jul 2021	WTE change since Jun 21	% change since Jun 21	WTE change since Dec 20	WTE change since Jul 20
Overall	32,737	32,780	+42	+0.1%	+420	+888
HSE	16,881	16,832	-49	-0.3%	+75	+117
Section 38	15,856	15,947	+91	+0.6%	+346	+771

HSE

Jul 2021 (Dec 2020 figure: 16,758)	WTE Jun 2021	WTE Jul 2021	WTE change since Jun 21	% change since Jun 21	WTE change since Dec 20	WTE change since Jul 20
Overall	16,881	16,832	-49	-0.3%	+75	+117
Consultants	10	10.30			-1	-0
Registrars	9	8.63	-1	-8.1%	+2	+1
SHO/ Interns	10	8.14	-2	-16.2%	-4	-2
Medical/ Dental, other	89	88.90	-0	-0.2%	-19	-0
Medical & Dental	119	116	-3	-2.2%	-22	-1
Nurse/ Midwife Manager	975	978.12	+3	+0.3%	+20	+32
Nurse/ Midwife Specialist & AN/MP	56	57.36	+1	+2.1%	+4	+8
Staff Nurse/ Staff Midwife	3,294	3,286.00	-8	-0.2%	+75	+89
Public Health Nurse	23	22.27	-0	-1.0%	+2	+3
Pre-registration Nurse/ Midwife Intern	30	30.21	+0	+0.1%	+28	+23
Pre-registration Nurse Intern (COVID-19)	5	1.00	-4	-77.8%	-8	-37
Nursing/ Midwifery awaiting registration	4	3.39	-0	-11.0%	-11	-10
Nursing/ Midwifery Student	39	34.60	-4	-10.1%	+9	-23
Nursing/ Midwifery other	12	8.87	-3	-24.1%	-2	-2
Nursing & Midwifery	4,397	4,387	-10	-0.2%	+109	+107
Therapy Professions	653	640.87	-12	-1.9%	+45	+58
Health Science/ Diagnostics	7	8.80	+1	+18.0%	+1	+2
Social Care	102	100.10	-2	-1.7%	-3	+4
Social Workers	155	152.24	-2	-1.6%	+1	+4
Psychologists	93	92.83	-0	-0.1%	+10	+16
Pharmacy	13	13.72	+1	+6.4%	+2	+2
H&SC, Other	24	23.52	-1	-2.1%	-3	-4
Health & Social Care Professionals	1,047	1,032	-15	-1.4%	+52	+82
Management (VIII & above)	137	140.23	+3	+2.1%	+8	+16
Administrative/ Supervisory (V to VII)	357	361.35	+4	+1.2%	+36	+60
Clerical (III & IV)	775	760.66	-14	-1.9%	+5	+34
Management & Administrative	1,269	1,262	-7	-0.6%	+49	+110
Support	777	752.66	-24	-3.1%	-29	-62
Maintenance/ Technical	111	106.27	-5	-4.2%	-4	-8
General Support	887	859	-29	-3.2%	-33	-70
Health Care Assistants	5,452	5,397.28	-55	-1.0%	-52	-386
Home Help	3,399	3,453.35	+55	+1.6%	-71	+205
Care, other	311	325.38	+14	+4.6%	+43	+71
Patient & Client Care	9,162	9,176	+14	+0.2%	-81	-111

Section 38

Jul 2021 (Dec 2020 figure: 15,601)	WTE Jun 2021	WTE Jul 2021	WTE change since Jun 21	% change since Jun 21	WTE change since Dec 20	WTE change since Jul 20
Overall	15,856	15,947	+91	+0.6%	+346	+771
Consultants	15	14.78	-0	-2.6%	-3	-2
Registrars	11	13.59	+3	+23.5%	+4	+3
SHO/ Interns	12	13.39	+1	+11.6%	+2	+2
Medical/ Dental, other	9	9.09			-1	-1
Medical & Dental	47	51	+4	+7.6%	+2	+2
Nurse/ Midwife Manager	695	701.56	+6	+0.9%	+16	+9
Nurse/ Midwife Specialist & AN/MP	49	48.68	-0	-1.0%	-1	+2
Staff Nurse/ Staff Midwife	1,979	1,968.40	-11	-0.5%	-38	+31
Pre-registration Nurse/ Midwife Intern	48	47.41	-0	-0.8%	+47	+47
Pre-registration Nurse Intern (COVID-19)	0	0.75	+0	+59.6%	-22	-117
Post-registration Nurse/ Midwife Student				-100.0%		-4
Nursing/ Midwifery Student	48	48.16	-0	-0.2%	+25	-73
Nursing/ Midwifery other	18	18.60	+0	+0.9%	+1	+1
Nursing & Midwifery	2,790	2,785	-5	-0.2%	+4	-31
Therapy Professions	506	503.15	-2	-0.5%	+8	+4
Health Science/ Diagnostics	18	17.00	-1	-4.8%		
Social Care	2,759	2,798.69	+40	+1.5%	+110	+274
Social Workers	176	174.58	-2	-0.9%	-3	+4
Psychologists	142	140.10	-1	-1.0%	-7	+2
Pharmacy	12	13.08	+1	+6.9%	+2	-0
H&SC, Other	50	48.27	-1	-2.8%	-2	-9
Health & Social Care Professionals	3,662	3,695	+33	+0.9%	+108	+275
Management (VIII & above)	159	158.54	-1	-0.6%	+9	+19
Administrative/ Supervisory (V to VII)	384	389.26	+5	+1.3%	+12	+22
Clerical (III & IV)	521	526.40	+6	+1.1%	+9	+8
Management & Administrative	1,064	1,074	+10	+1.0%	+30	+49
General Support	795	790	-5	-0.7%	-10	-55
Patient & Client Care	7,498	7,552	+54	+0.7%	+211	+531



Social Care Services Employment by Care Group & Administration (HSE / S38): July 2021

Social Care

Jul 2021 (Dec 2020 figure: 32,359)	WTE Jun 2021	WTE Jul 2021	WTE change since Jun 21	% change since Jun 21	WTE change since Dec 20	WTE change since Jul 20
Overall	32,737	32,780	+42	+0.1%	+420	+888
HSE	4,211	4,132	-79	-1.9%	+47	+144
Section 38	15,112	15,200	+88	+0.6%	+340	+768
Disabilities	19,323	19,331	+9	+0.0%	+387	+913
HSE	12,670	12,701	+30	+0.2%	+27	-28
Section 38	744	748	+4	+0.5%	+6	+3
Older People	13,414	13,448	+34	+0.3%	+33	-25

Disabilities

Jul 2021 (Dec 2020 figure: 18,944)	WTE Jun 2021	WTE Jul 2021	WTE change since Jun 21	% change since Jun 21	WTE change since Dec 20	WTE change since Jul 20
Overall	19,323	19,331	+9	+0.0%	+387	+913
Consultants	21	21	-0	-1.9%	-4	-2
Registrars	10	11	+1	+12.1%	+3	+1
SHO/ Interns	8	8	+0	+4.5%	-1	-1
Medical/ Dental, other	14	14				-0
Medical & Dental	53	54	+1	+2.2%	-1	-1
Nurse/ Midwife Manager	911	912	+1	+0.1%	+15	+12
Nurse/ Midwife Specialist & AN/MP	67	66	-1	-1.2%	+2	+2
Staff Nurse/ Staff Midwife	2,599	2,584	-15	-0.6%	-10	+62
Public Health Nurse	10	10	+0	+0.5%	+3	+4
Pre-registration Nurse/ Midwife Intern	78	78	-0	-0.4%	+49	+71
Pre-registration Nurse Intern (COVID-19)	5	2	-3	-64.8%	+2	-153
Post-registration Nurse/ Midwife Student				-100.0%		-4
Nursing/ Midwifery awaiting registration	2	2			-12	-9
Nursing/ Midwifery Student	85	81	-4	-4.2%	+34	-95
Nursing/ Midwifery other	26	23	-3	-10.1%	-0	-1
Nursing & Midwifery	3,698	3,676	-22	-0.6%	+44	-16
Therapy Professions	816	808	-8	-0.9%	+13	+26
Health Science/ Diagnostics	20	21	+1	+2.5%	+1	+2
Social Care	2,858	2,896	+38	+1.3%	+107	+278
Social Workers	229	226	-3	-1.5%	-2	+5
Psychologists	232	232	+0	+0.0%	+3	+20
Pharmacy	7	7	+0	+6.8%	+1	-1
H&SC, Other	72	70	-2	-2.6%	-5	-13
Health & Social Care Professionals	4,234	4,261	+26	+0.6%	+117	+317
Management (VIII & above)	218	217	-1	-0.7%	+13	+27
Administrative/ Supervisory (V to VII)	553	560	+7	+1.3%	+33	+61
Clerical (III & IV)	701	703	+2	+0.2%	+18	+23
Management & Administrative	1,472	1,480	+7	+0.5%	+64	+110
Support	658	638	-20	-3.0%	-25	-70
Maintenance/ Technical	133	130	-3	-1.9%	-2	+0
General Support	791	768	-23	-2.9%	-27	-70
Health Care Assistants	7,272	7,291	+20	+0.3%	+189	+458
Home Help	88	88			-6	-13
Care, other	1,715	1,713	-2	-0.1%	+8	+128
Patient & Client Care	9,074	9,092	+18	+0.2%	+191	+573

Older People

Jul 2021 (Dec 2020 figure: 13,415)	WTE Jun 2021	WTE Jul 2021	WTE change since Jun 21	% change since Jun 21	WTE change since Dec 20	WTE change since Jul 20
Overall	13,414	13,448	+34	+0.3%	+33	-25
Consultants	4	4			-0	-0
Registrars	11	11	+1	+6.0%	+2	+3
SHO/ Interns	14	13	-1	-3.9%	-1	+1
Medical/ Dental, other	84	84	-0	-0.3%	-20	-1
Medical & Dental	113	112	-0	-0.1%	-18	+2
Nurse/ Midwife Manager	759	768	+9	+1.2%	+22	+28
Nurse/ Midwife Specialist & AN/MP	38	40	+2	+4.0%	+2	+9
Staff Nurse/ Staff Midwife	2,674	2,671	-3	-0.1%	+47	+57
Public Health Nurse	12	12	-0	-2.3%	-1	-1
<i>Post-registration Nurse/ Midwife Student</i>				-100.0%	-1	
<i>Nursing/ Midwifery awaiting registration</i>	2	1	-0	-23.2%	+0	-1
Nursing/ Midwifery Student	2	1	-0	-23.2%	+0	-1
Nursing/ Midwifery other	4	4			+0	+1
Nursing & Midwifery	3,489	3,496	+7	+0.2%	+69	+92
Therapy Professions	343	336	-7	-2.0%	+41	+37
Health Science/ Diagnostics	5	5	-0	-0.6%	-0	-0
Social Care	3	3			+0	
Social Workers	102	101	-1	-0.6%	+1	+3
Psychologists	2	1	-2	-76.2%	-1	-2
Pharmacy	18	20	+1	+6.6%	+2	+2
H&SC, Other	2	2				+0
Health & Social Care Professionals	474	466	-8	-1.7%	+43	+40
Management (VIII & above)	78	82	+3	+4.3%	+3	+8
Administrative/ Supervisory (V to VII)	188	191	+3	+1.4%	+15	+22
Clerical (III & IV)	594	584	-10	-1.7%	-3	+18
Management & Administrative	861	857	-4	-0.5%	+15	+48
Support	797	788	-8	-1.1%	-13	-49
Maintenance/ Technical	95	92	-3	-2.8%	-2	-6
General Support	892	881	-11	-1.2%	-15	-56
Health Care Assistants	4,113	4,102	-11	-0.3%	-17	-390
Home Help	3,311	3,366	+55	+1.7%	-66	+218
Care, other	162	168	+7	+4.1%	+22	+20
Patient & Client Care	7,585	7,636	+50	+0.7%	-60	-152

Social Care Services Employment by CHO etc. Jul 2021

CHO 1

Jul 2021 (Dec 2020 figure: 3,464)	WTE Jun 2021	WTE Jul 2021	WTE change since Jun 21	% change since Jun 21	WTE change since Dec 20	WTE change since Jul 20
Overall	3,512	3,448	-65	-1.8%	-16	+27
Medical/ Dental, other	17	17			-18	-3
Medical & Dental	17	17	+0	+0.0%	-18	-3
Nurse/ Midwife Manager	199	199	-1	-0.3%	+5	-1
Nurse/ Midwife Specialist & AN/MP	19	20	+1	+3.4%	+2	+2
Staff Nurse/ Staff Midwife	679	670	-10	-1.4%	+27	+38
Public Health Nurse	1	1			+1	+1
Public Health Nurse	1	1			+1	+1
Pre-registration Nurse/ Midwife Intern	19	19	+0	+1.2%	+16	+19
Pre-registration Nurse Intern (COVID-19)	5	1	-4	-77.8%	+1	-26
Nursing/ Midwifery awaiting registration				-100.0%	-11	-11
Nursing/ Midwifery Student	24	20	-3	-13.8%	+3	-18
Nursing/ Midwifery other	5	3	-2	-38.5%	-2	-3
Nursing & Midwifery	927	912	-15	-1.6%	+35	+19
Therapy Professions	59	58	-1	-1.8%	+2	+2
Health Science/ Diagnostics	2	2	-0	-1.9%	-0	+0
Social Care	11	11	-1	-6.6%	-1	+2
Social Workers	33	32	-2	-4.6%	-2	-4
Psychologists	13	13	+0	+3.3%	+6	+8
H&SC, Other	8	8	-0	-4.3%	-2	-2
Health & Social Care Professionals	126	123	-3	-2.6%	+3	+6
Management (VIII & above)	24	24	-0	-1.1%	-0	+1
Administrative/ Supervisory (V to VII)	54	56	+3	+4.9%	+7	+9
Clerical (III & IV)	138	132	-6	-4.1%	-9	-0
Management & Administrative	216	213	-3	-1.5%	-2	+10
Support	163	150	-14	-8.4%	-18	-19
Maintenance/ Technical	13	11	-2	-14.9%	-2	-2
General Support	176	161	-16	-8.9%	-20	-21
Health Care Assistants	1,372	1,333	-38	-2.8%	-22	-72
Home Help	607	615	+7	+1.2%	-4	+81
Care, other	70	74	+4	+5.4%	+11	+8
Patient & Client Care	2,050	2,022	-28	-1.3%	-15	+17

CHO 2

Jul 2021 (Dec 2020 figure: 3,105)	WTE Jun 2021	WTE Jul 2021	WTE change since Jun 21	% change since Jun 21	WTE change since Dec 20	WTE change since Jul 20
Overall	3,086	3,114	+28	+0.9%	+9	+37
Consultants	3	3	-1	-14.7%	-1	-1
Registrars	2	2				-0
Medical/ Dental, other	12	12				+0
Medical & Dental	17	17	-1	-2.9%	-1	-0
Nurse/ Midwife Manager	150	150	-0	-0.1%	+5	+8
Nurse/ Midwife Specialist & AN/MP	9	8	-0	-5.1%	+1	+1
Staff Nurse/ Staff Midwife	470	466	-4	-0.9%	-8	+4
Public Health Nurse	1	1				
<i>Pre-registration Nurse Intern (COVID-19)</i>				-100.0%		-1
Nursing/ Midwifery Student				-100.0%	-1	-1
Nursing & Midwifery	630	625	-5	-0.8%	-3	+12
Therapy Professions	62	58	-5	-7.3%	-1	-2
Health Science/ Diagnostics	1	1				
Social Care	260	264	+4	+1.6%	+21	+25
Social Workers	38	37	-1	-2.9%	+0	+1
Psychologists	15	15	+0	+0.4%	+1	+1
Pharmacy	1	1	-0	-6.8%	-0	-0
H&SC, Other	12	10	-2	-17.6%	-1	-3
Health & Social Care Professionals	389	386	-4	-0.9%	+19	+21
Management (VIII & above)	20	19	-1	-4.1%	+1	+2
Administrative/ Supervisory (V to VII)	54	58	+4	+6.8%	+4	+9
Clerical (III & IV)	110	105	-4	-3.9%	-10	-9
Management & Administrative	183	182	-1	-0.7%	-5	+3
Support	103	99	-4	-3.5%	+0	+8
Maintenance/ Technical	31	30	-1	-3.2%	-2	-2
General Support	134	130	-5	-3.4%	-2	+6
Health Care Assistants	1,169	1,187	+17	+1.5%	+36	-18
Home Help	389	416	+27	+6.9%	-41	-2
Care, other	174	173	-0	-0.2%	+5	+17
Patient & Client Care	1,732	1,775	+44	+2.5%	+0	-4

CHO 3

Jul 2021 (Dec 2020 figure: 2,976)	WTE Jun 2021	WTE Jul 2021	WTE change since Jun 21	% change since Jun 21	WTE change since Dec 20	WTE change since Jul 20
Overall	3,049	3,097	+48	+1.6%	+121	+150
Consultants	2	1	-1	-48.4%	-2	-2
Medical/ Dental, other	6	6			-1	
Medical & Dental	8	7	-1	-12.8%	-3	-1
Nurse/ Midwife Manager	139	139	+0	+0.1%	+0	-3
Nurse/ Midwife Specialist & AN/MP	14	14	-0	-0.1%	-1	+1
Staff Nurse/ Staff Midwife	508	510	+2	+0.4%	+8	+31
Public Health Nurse	1	1				
Public Health Nurse	1	1				
Pre-registration Nurse/ Midwife Intern	8	8			-4	+8
Pre-registration Nurse Intern (COVID-19)		0	+0	-100.0%	+0	-24
Nursing/ Midwifery Student	8	8	+0	+4.1%	+7	-15
Nursing/ Midwifery other	4	4				
Nursing & Midwifery	673	676	+3	+0.4%	+15	+13
Therapy Professions	113	114	+1	+1.3%	+1	+9
Health Science/ Diagnostics	2	3	+1	+40.8%	+1	+2
Social Care	279	286	+6	+2.2%	+2	+25
Social Workers	23	24	+1	+5.0%	+1	+4
Psychologists	19	19	+0	+0.6%	-1	-3
Pharmacy	1	1				
H&SC, Other	10	10	+0	+1.2%	-1	-2
Health & Social Care Professionals	448	458	+10	+2.2%	+2	+35
Management (VIII & above)	14	14	+0	+0.3%	+0	+1
Administrative/ Supervisory (V to VII)	61	62	+1	+1.0%	+0	-0
Clerical (III & IV)	115	116	+1	+0.9%	+9	+6
Management & Administrative	190	191	+2	+0.9%	+9	+7
Support	117	115	-1	-1.2%	-1	-2
Maintenance/ Technical	41	41	-1	-1.6%	+0	+1
General Support	158	156	-2	-1.3%	-0	-1
Health Care Assistants	1,148	1,157	+9	+0.8%	+56	+51
Home Help	220	250	+30	+13.6%	+33	+32
Care, other	204	202	-2	-0.8%	+9	+15
Patient & Client Care	1,572	1,609	+37	+2.4%	+98	+98

CHO 4

Jul 2021 (Dec 2020 figure: 5,486)	WTE Jun 2021	WTE Jul 2021	WTE change since Jun 21	% change since Jun 21	WTE change since Dec 20	WTE change since Jul 20
Overall	5,530	5,508	-23	-0.4%	+22	+145
Consultants	4	4				+1
Registrars	3	2	-1	-35.1%	-1	-1
SHO/ Interns	1	1				+1
Medical/ Dental, other	23	23	-0	-0.7%	-0	-1
Medical & Dental	31	29	-1	-4.1%	-1	+0
Nurse/ Midwife Manager	209	211	+2	+0.9%	-1	-4
Nurse/ Midwife Specialist & AN/MP	18	18	+0	+0.1%	-2	-1
Staff Nurse/ Staff Midwife	842	838	-4	-0.5%	-2	+7
Public Health Nurse	6	6	+0	+0.0%	-0	+1
Pre-registration Nurse/ Midwife Intern	10	10			+4	+10
Pre-registration Nurse Intern (COVID-19)				-100.0%		-27
Post-registration Nurse/ Midwife Student				-100.0%	-1	
Nursing/ Midwifery awaiting registration	2	2				+2
Nursing/ Midwifery Student	12	12			+2	-15
Nursing/ Midwifery other				-100.0%		-1
Nursing & Midwifery	1,087	1,085	-2	-0.2%	-4	-14
Therapy Professions	169	166	-3	-1.9%	+21	+16
Health Science/ Diagnostics	1	1				
Social Care	247	245	-2	-0.7%	+5	+15
Social Workers	39	37	-2	-5.4%	-2	+2
Psychologists	35	35	-0	-1.0%	-1	+2
Pharmacy	4	5	+0	+8.9%	+1	+1
H&SC, Other	9	8	-1	-10.7%	-2	-2
Health & Social Care Professionals	506	497	-8	-1.6%	+22	+32
Management (VIII & above)	40	39	-1	-2.0%	+3	+2
Administrative/ Supervisory (V to VII)	75	76	+1	+1.4%	-2	+3
Clerical (III & IV)	224	223	-1	-0.3%	+2	+4
Management & Administrative	338	338	-0	-0.1%	+3	+10
Support	257	254	-3	-1.0%	+2	-5
Maintenance/ Technical	19	19	+0	+0.1%	+1	+3
General Support	276	273	-3	-1.0%	+3	-2
Health Care Assistants	1,895	1,901	+7	+0.3%	+50	+23
Home Help	1,025	1,012	-14	-1.3%	-55	+55
Care, other	373	372	-1	-0.3%	+6	+41
Patient & Client Care	3,293	3,285	-8	-0.3%	+0	+119

CHO 5

Jul 2021 (Dec 2020 figure: 3,213)	WTE Jun 2021	WTE Jul 2021	WTE change since Jun 21	% change since Jun 21	WTE change since Dec 20	WTE change since Jul 20
Overall	3,279	3,280	+1	+0.0%	+67	+89
Consultants	1	1	+0	+28.4%	+0	+1
Medical/ Dental, other	15	15			+1	+6
Medical & Dental	16	16	+0	+1.3%	+1	+7
Nurse/ Midwife Manager	158	162	+3	+2.0%	+3	+9
Nurse/ Midwife Specialist & AN/MP	6	6	+0	+0.6%	+0	+2
Staff Nurse/ Staff Midwife	485	484	-1	-0.2%	+7	+4
Public Health Nurse	10	10	+0	+0.5%	+2	+1
Pre-registration Nurse/ Midwife Intern	9	9	-0	-2.3%	+9	+9
Pre-registration Nurse Intern (COVID-19)				-100.0%		-7
Post-registration Nurse/ Midwife Student				-100.0%		-4
Nursing/ Midwifery awaiting registration	1		-1	-100.0%	-2	
Nursing/ Midwifery Student	10	9	-1	-12.1%	+8	-3
Nursing Education/Clinical	1	1	+0	+3.8%	+1	+1
Nursing/ Midwifery other	1	1	+0	+3.8%	+1	+1
Nursing & Midwifery	670	671	+1	+0.2%	+21	+13
Therapy Professions	107	104	-3	-3.2%	+6	+5
Social Care	138	138	-0	-0.0%	-5	-2
Social Workers	30	29	-1	-2.1%	+1	+3
Psychologists	22	22	+1	+2.9%	+3	+9
Pharmacy	0		-0	-100.0%		-1
Pharmacy	0		-0	-100.0%	-1	-1
H&SC, Other	6	6	+0	+3.3%	+1	-2
Health & Social Care Professionals	302	299	-4	-1.2%	+5	+13
Management (VIII & above)	19	19	+0	+0.2%	+2	+4
Administrative/ Supervisory (V to VII)	73	74	+1	+1.4%	+16	+21
Clerical (III & IV)	98	95	-3	-3.3%	+2	+6
Management & Administrative	190	188	-2	-1.1%	+21	+31
Support	92	90	-2	-1.7%	-5	-40
Maintenance/ Technical	11	11	+0	+2.0%	+0	-4
General Support	103	102	-1	-1.3%	-5	-44
Health Care Assistants	1,182	1,186	+4	+0.3%	+6	-1
Home Help	645	651	+6	+0.9%	+13	+54
Care, other	171	168	-3	-1.8%	+6	+17
Patient & Client Care	1,998	2,005	+7	+0.3%	+25	+70

CHO 6

Jul 2021 (Dec 2020 figure: 2,020)	WTE Jun 2021	WTE Jul 2021	WTE change since Jun 21	% change since Jun 21	WTE change since Dec 20	WTE change since Jul 20
Overall	2,034	2,026	-8	-0.4%	+5	+13
Consultants	3	3				
Registrars	3	2	-0	-14.3%	+1	+1
SHO/ Interns		1	+1	-100.0%	+1	+1
Medical/ Dental, other	3	3			-1	-2
Medical & Dental	9	9	+1	+6.7%	+1	+0
Nurse/ Midwife Manager	106	109	+3	+2.8%	+3	-2
Nurse/ Midwife Specialist & AN/MP	1	1				
Staff Nurse/ Staff Midwife	337	332	-5	-1.6%	-16	-7
Nursing & Midwifery	444	442	-2	-0.5%	-13	-9
Therapy Professions	91	93	+2	+1.7%	+4	+9
Social Care	371	373	+2	+0.5%	+12	+54
Social Workers	19	21	+1	+7.3%	+0	-0
Psychologists	16	15	-1	-7.7%	-0	-3
Pharmacy	3	4	+1	+26.7%	+1	+1
H&SC, Other	1	1	+0	+13.3%		+0
Health & Social Care Professionals	502	507	+5	+1.0%	+18	+61
Management (VIII & above)	36	37	+1	+2.8%	+2	+1
Administrative/ Supervisory (V to VII)	81	78	-2	-2.6%	+5	+3
Clerical (III & IV)	85	86	+0	+0.4%	-3	-11
Management & Administrative	202	201	-1	-0.4%	+4	-7
Support	128	128	+0	+0.2%	+0	-23
Maintenance/ Technical	15	14	-1	-5.9%	+0	-2
General Support	143	142	-1	-0.5%	+1	-25
Health Care Assistants	490	479	-11	-2.2%	-1	-23
Care, other	245	246	+1	+0.6%	-4	+16
Patient & Client Care	735	725	-10	-1.3%	-5	-7

CHO 7

Jul 2021 (Dec 2020 figure: 4,125)	WTE Jun 2021	WTE Jul 2021	WTE change since Jun 21	% change since Jun 21	WTE change since Dec 20	WTE change since Jul 20
Overall	4,198	4,234	+36	+0.9%	+109	+191
Consultants	0	0			-0	-0
Registrars	3	4	+1	+19.3%	+1	+1
SHO/ Interns	10	9	-1	-6.1%	+0	-0
Medical/ Dental, other	3	3				-2
Medical & Dental	16	16	-0	-0.2%	+1	-2
Nurse/ Midwife Manager	229	232	+3	+1.4%	+28	+27
Nurse/ Midwife Specialist & AN/MP	7	7	-0	-0.1%	-1	-1
Staff Nurse/ Staff Midwife	628	635	+6	+1.0%	+15	+16
Pre-registration Nurse/ Midwife Intern	8	8			+8	+8
Pre-registration Nurse Intern (COVID-19)				-100.0%		-15
Nursing/ Midwifery awaiting registration	1	1	+1	+71.6%	+1	-1
Nursing/ Midwifery Student	8	9	+1	+7.0%	+8	-9
Nursing/ Midwifery other	3	3			+1	+2
Nursing & Midwifery	875	885	+10	+1.2%	+51	+36
Therapy Professions	157	160	+2	+1.4%	+8	+4
Health Science/ Diagnostics	3	2	-1	-30.1%	-1	-1
Social Care	394	409	+16	+4.0%	+20	+47
Social Workers	44	45	+1	+2.0%	+1	-2
Psychologists	30	32	+1	+3.9%	-1	+2
Pharmacy	7	7	+0	+6.8%	+1	-2
H&SC, Other	3	4	+1	+40.0%	+1	+1
Health & Social Care Professionals	638	658	+20	+3.2%	+30	+49
Management (VIII & above)	52	52			+3	+9
Administrative/ Supervisory (V to VII)	108	111	+3	+2.9%	+5	+13
Clerical (III & IV)	147	142	-5	-3.3%	+4	+9
Management & Administrative	308	306	-2	-0.6%	+12	+31
Support	269	265	-4	-1.5%	-9	-7
Maintenance/ Technical	36	35	-1	-2.3%	+0	+3
General Support	305	300	-5	-1.6%	-9	-3
Health Care Assistants	1,535	1,544	+9	+0.6%	+40	+68
Home Help	126	125	-2	-1.3%	-7	-9
Care, other	396	401	+5	+1.2%	-7	+22
Patient & Client Care	2,057	2,069	+12	+0.6%	+25	+80

CHO 8

Jul 2021 (Dec 2020 figure: 3,689)	WTE Jun 2021	WTE Jul 2021	WTE change since Jun 21	% change since Jun 21	WTE change since Dec 20	WTE change since Jul 20
Overall	3,716	3,738	+22	+0.6%	+48	+75
Consultants				-100.0%	-1	-1
Registrars	1	1				-1
Medical/ Dental, other	12	12	-0	-0.4%	-0	-0
Medical & Dental	13	13	-0	-0.4%	-1	-2
Nurse/ Midwife Manager	205	204	-1	-0.6%	-4	+5
Nurse/ Midwife Specialist & AN/MP	13	14	+0	+3.3%	+4	+4
Staff Nurse/ Staff Midwife	578	578	-0	-0.0%	+11	+17
Public Health Nurse	4	3	-0	-7.5%	-0	+0
<i>Pre-registration Nurse/ Midwife Intern</i>	6	6	-0	-5.7%	+6	+6
<i>Pre-registration Nurse Intern (COVID-19)</i>	0	0	-0	-10.6%	+0	-29
Nursing/ Midwifery Student	7	6	-0	-6.1%	+2	-23
Nursing/ Midwifery other	10	10	+0	+1.6%	+2	+2
Nursing & Midwifery	817	816	-1	-0.2%	+14	+4
Therapy Professions	122	119	-2	-1.9%	-3	+7
Health Science/ Diagnostics	2	2	+0	+23.9%	-0	-0
Social Care	378	382	+4	+0.9%	+2	+15
Social Workers	33	32	-0	-1.0%	+3	+3
Psychologists	26	25	-0	-1.8%	+3	+5
Pharmacy	3	3	+0	+8.3%	+1	+2
H&SC, Other	7	7	+0	+2.0%	+1	+0
Health & Social Care Professionals	569	570	+1	+0.2%	+6	+32
Management (VIII & above)	20	21	+1	+3.2%	+1	+2
Administrative/ Supervisory (V to VII)	75	72	-3	-4.2%	-6	-7
Clerical (III & IV)	162	170	+8	+5.1%	+10	+11
Management & Administrative	257	262	+6	+2.3%	+5	+6
Support	64	64	+0	+0.0%	-2	-5
Maintenance/ Technical	38	38	-0	-0.4%	+0	-2
General Support	102	102	-0	-0.1%	-2	-7
Health Care Assistants	1,434	1,447	+13	+0.9%	+31	+38
Home Help	386	386	+1	+0.1%	-11	-5
Care, other	139	141	+3	+2.1%	+6	+10
Patient & Client Care	1,958	1,974	+16	+0.8%	+26	+43

CHO 9

Jul 2021 (Dec 2020 figure: 4,199)	WTE Jun 2021	WTE Jul 2021	WTE change since Jun 21	% change since Jun 21	WTE change since Dec 20	WTE change since Jul 20
Overall	4,251	4,254	+4	+0.1%	+55	+152
Consultants	12	13	+1	+7.4%	-0	-1
Registrars	9	11	+3	+32.1%	+4	+4
SHO/ Interns	11	10	-1	-5.0%	-3	-2
Medical/ Dental, other	7	7				
Medical & Dental	39	42	+3	+8.0%	+1	+2
Nurse/ Midwife Manager	274	275	+0	+0.1%	-2	+2
Nurse/ Midwife Specialist & AN/MP	19	19	+0	+0.2%	+1	+3
Staff Nurse/ Staff Midwife	745	742	-3	-0.3%	-4	+11
Public Health Nurse				-100.0%		
Pre-registration Nurse/ Midwife Intern	18	18			+10	+11
Pre-registration Nurse Intern (COVID-19)				-100.0%		-23
Nursing/ Midwifery Student	18	18			+5	-12
Nursing/ Midwifery other	8	7	-1	-11.5%	-2	-2
Nursing & Midwifery	1,064	1,061	-3	-0.3%	-2	+2
Therapy Professions	278	273	-5	-1.9%	+15	+14
Health Science/ Diagnostics	15	15			+1	+1
Social Care	781	791	+10	+1.2%	+50	+96
Social Workers	72	70	-2	-2.4%	-3	+2
Psychologists	59	57	-2	-3.3%	-7	-2
Pharmacy	6	6				
H&SC, Other	17	17	+0	+0.2%	-1	-3
Health & Social Care Professionals	1,228	1,229	+1	+0.1%	+55	+108
Management (VIII & above)	54	55	+1	+2.1%	+5	+12
Administrative/ Supervisory (V to VII)	136	139	+3	+2.2%	+18	+31
Clerical (III & IV)	179	182	+2	+1.4%	+11	+18
Management & Administrative	370	376	+7	+1.8%	+34	+61
Support	261	260	-2	-0.6%	-6	-25
Maintenance/ Technical	23	23	-0	-0.3%	-2	-1
General Support	285	283	-2	-0.6%	-8	-26
Health Care Assistants	1,160	1,160	-0	-0.0%	-23	+2
Care, other	105	104	-2	-1.6%	-3	+3
Patient & Client Care	1,265	1,263	-2	-0.1%	-26	+5

other Community Services

Jul 2021 (Dec 2020 figure: 81)	WTE Jun 2021	WTE Jul 2021	WTE change since Jun 21	% change since Jun 21	WTE change since Dec 20	WTE change since Jul 20
Overall	82	81	-1	-1.5%	-0	+9
Health Science/ Diagnostics				-100.0%		
Health & Social Care Professionals				-100.0%		
Management (VIII & above)	18	19	+1	+5.2%	+1	+1
Administrative/ Supervisory (V to VII)	25	25	-0	-1.3%	+0	-0
Clerical (III & IV)	38	36	-2	-4.9%	-3	+7
Management & Administrative	81	80	-1	-1.5%	-1	+8
Health Care Assistants	0	0				
<i>Other Care Grades</i>	1	1			+1	+1
Care, other	1	1			+1	+1
Patient & Client Care	1	1			+1	+1

Social Care Services Employment by CHO & Admin : Jul 2021

Jul 2021 (Dec 2020 figure: 32,359)	WTE Jun 2021	WTE Jul 2021	WTE change since Jun 21	% change since Jun 21	WTE change since Dec 20	WTE change since Jul 20
Overall	32,737	32,780	+42	+0.1%	+420	+888
CHO 1	3,512	3,448	-65	-1.8%	-16	+27
Health Service Executive	1,760	1,782	+22	+1.3%	-25	-29
Bros. of Charity, West Region	1,326	1,332	+6	+0.5%	+34	+66
Section 38 Voluntary Agencies	1,326	1,332	+6	+0.5%	+34	+66
CHO 2	3,086	3,114	+28	+0.9%	+9	+37
Health Service Executive	1,230	1,263	+34	+2.7%	+90	+76
Bros. of Charity, Clare	402	399	-2	-0.6%	+27	+58
Bros. of Charity, Limerick	587	597	+10	+1.8%	+5	+22
Daughters of Charity, Limerick	545	545	+0	+0.1%	-4	-10
Daughters of Charity, Roscrea	286	292	+6	+2.2%	+3	+3
Section 38 Voluntary Agencies	1,819	1,834	+15	+0.8%	+32	+73
CHO 3	3,049	3,097	+48	+1.6%	+121	+150
Health Service Executive	3,240	3,220	-20	-0.6%	-23	+50
Bros. of Charity, Southern	802	803	+1	+0.2%	+28	+48
Cope Foundation	1,159	1,157	-2	-0.2%	+10	+32
St. John of God, Kerry	330	328	-2	-0.7%	+8	+15
Section 38 Voluntary Agencies	2,291	2,288	-3	-0.1%	+45	+95
CHO 4	5,530	5,508	-23	-0.4%	+22	+145
Health Service Executive	2,091	2,089	-2	-0.1%	+44	+29
Bros. of Charity, Waterford	679	688	+9	+1.4%	+20	+52
Carriglea Cairde Services	220	221	+0	+0.1%	+7	+13
St. Patrick's, Kilkenny	290	283	-7	-2.4%	-4	-5
Section 38 Voluntary Agencies	1,189	1,191	+3	+0.2%	+23	+60
CHO 5	3,279	3,280	+1	+0.0%	+67	+89
Health Service Executive	573	567	-6	-1.0%	-5	-28
Children's Sunshine Home	57	58	+1	+1.8%	+2	+2
Leopardstown Park Hospital	206	206	+0	+0.1%	-0	+2
Royal Hospital, Donnybrook, Dublin	266	265	-2	-0.6%	-3	-12
St. John of God (IDS)	455	452	-3	-0.7%	-16	+4
Sunbeam House Services	476	478	+1	+0.3%	+28	+45
Section 38 Voluntary Agencies	1,460	1,458	-2	-0.1%	+11	+41
CHO 6	2,034	2,026	-8	-0.4%	+5	+13
Health Service Executive	1,150	1,148	-2	-0.1%	-9	-9
Cheeverstown House	414	419	+4	+1.1%	+24	+24
Kare, Newbridge, Co Kildare	394	395	+1	+0.3%	+18	+60
Peamount Hospital (Newcastle)	531	535	+4	+0.8%	+53	+10
Stewart's Hospital, (Palmerstown)	934	939	+5	+0.5%	+25	+76
St. John of God Liffey Services	775	798	+22	+2.9%	-3	+30
Section 38 Voluntary Agencies	3,048	3,086	+37	+1.2%	+117	+200
CHO 7	4,198	4,234	+36	+0.9%	+109	+191
Health Service Executive	2,080	2,076	-4	-0.2%	-18	-37
Muiriosa Foundation, Laois/Offaly	347	352	+5	+1.4%	+32	+62
Muiriosa Foundation, Longford/Westmeath	289	294	+5	+1.8%	+10	+25

Jul 2021 (Dec 2020 figure: 32,359)	WTE Jun 2021	WTE Jul 2021	WTE change since Jun 21	% change since Jun 21	WTE change since Dec 20	WTE change since Jul 20
Overall	32,737	32,780	+42	+0.1%	+420	+888
Muiriosa Foundation, South Kildare	347	352	+5	+1.5%	+10	+8
St. John of God, Drumcar	652	663	+10	+1.6%	+14	+18
Section 38 Voluntary Agencies	1,636	1,661	+26	+1.6%	+67	+112
CHO 8	3,716	3,738	+22	+0.6%	+48	+75
Health Service Executive	1,164	1,158	-7	-0.6%	+38	+28
Central Remedial Clinic	297	293	-4	-1.5%	-3	+10
Daughters of Charity, Dublin	1,079	1,080	+1	+0.1%	+17	+30
Incorporated Orthopaedic Hospital	271	276	+5	+1.8%	+9	+12
St. Michael's House, Dublin	1,439	1,448	+9	+0.6%	-5	+72
Section 38 Voluntary Agencies	3,086	3,097	+10	+0.3%	+18	+124
CHO 9	4,251	4,254	+4	+0.1%	+55	+152
other Community Services	82	81	-1	-1.5%	-0	+9

Disability Services Employment by CHO & Admin: Jul 2021

Jul 2021 (Dec 2020 figure: 18,944)	WTE Jun 2021	WTE Jul 2021	WTE change since Jun 21	% change since Jun 21	WTE change since Dec 20	WTE change since Jul 20
Overall	19,323	19,331	+9	+0.0%	+387	+913
CHO 1	1,599	1,539	-59	-3.7%	-7	+4
Health Service Executive	224	223	-1	-0.4%	+5	+10
Bros. of Charity, West Region	1,326	1,332	+6	+0.5%	+34	+66
Section 38 Voluntary Agencies	1,326	1,332	+6	+0.5%	+34	+66
CHO 2	1,550	1,555	+5	+0.3%	+39	+76
Health Service Executive	141	142	+2	+1.1%	-3	+4
Bros. of Charity, Clare	402	399	-2	-0.6%	+27	+58
Bros. of Charity, Limerick	587	597	+10	+1.8%	+5	+22
Daughters of Charity, Limerick	545	545	+0	+0.1%	-4	-10
Daughters of Charity, Roscrea	286	292	+6	+2.2%	+3	+3
Section 38 Voluntary Agencies	1,819	1,834	+15	+0.8%	+32	+73
CHO 3	1,960	1,976	+16	+0.8%	+29	+77
Health Service Executive	329	328	-1	-0.3%	+15	+25
Bros. of Charity, Southern	802	803	+1	+0.2%	+28	+48
Cope Foundation	1,159	1,157	-2	-0.2%	+10	+32
St. John of God, Kerry	330	328	-2	-0.7%	+8	+15
Section 38 Voluntary Agencies	2,291	2,288	-3	-0.1%	+45	+95
CHO 4	2,620	2,616	-4	-0.2%	+60	+120
Health Service Executive	435	430	-5	-1.2%	+36	+57
Bros. of Charity, Waterford	679	688	+9	+1.4%	+20	+52
Carriglea Cairde Services	220	221	+0	+0.1%	+7	+13
St. Patrick's, Kilkenny	290	283	-7	-2.4%	-4	-5
Section 38 Voluntary Agencies	1,189	1,191	+3	+0.2%	+23	+60
CHO 5	1,624	1,621	-3	-0.2%	+58	+116
Health Service Executive	242	243	+1	+0.6%	-0	+8
Children's Sunshine Home	57	58	+1	+1.8%	+2	+2
St. John of God (IDS)	455	452	-3	-0.7%	-16	+4
Sunbeam House Services	476	478	+1	+0.3%	+28	+45
Section 38 Voluntary Agencies	988	987	-1	-0.1%	+14	+51
CHO 6	1,229	1,230	+1	+0.1%	+14	+58
Health Service Executive	130	131	+1	+0.6%	-4	+8
Cheeverstown House	414	419	+4	+1.1%	+24	+24
Kare, Newbridge, Co Kildare	394	395	+1	+0.3%	+18	+60
Peamount Hospital (Newcastle)	531	535	+4	+0.8%	+53	+10
Stewart's Hospital, (Palmerstown)	934	939	+5	+0.5%	+25	+76
St. John of God Liffey Services	775	798	+22	+2.9%	-3	+30
Section 38 Voluntary Agencies	3,048	3,086	+37	+1.2%	+117	+200
CHO 7	3,179	3,217	+38	+1.2%	+113	+208
Health Service Executive	604	604	-1	-0.1%	-7	+0
Muiriosa Foundation, Laois/Offaly	347	352	+5	+1.4%	+32	+62
Muiriosa Foundation, Longford/Westmeath	289	294	+5	+1.8%	+10	+25
Muiriosa Foundation, South Kildare	347	352	+5	+1.5%	+10	+8
St. John of God, Drumcar	652	663	+10	+1.6%	+14	+18

Jul 2021 (Dec 2020 figure: 18,944)	WTE Jun 2021	WTE Jul 2021	WTE change since Jun 21	% change since Jun 21	WTE change since Dec 20	WTE change since Jul 20
Overall	19,323	19,331	+9	+0.0%	+387	+913
Section 38 Voluntary Agencies	1,636	1,661	+26	+1.6%	+67	+112
CHO 8	2,240	2,265	+25	+1.1%	+59	+112
Health Service Executive	501	486	-16	-3.1%	+13	+28
Central Remedial Clinic	297	293	-4	-1.5%	-3	+10
Daughters of Charity, Dublin	1,079	1,080	+1	+0.1%	+17	+30
St. Michael's House, Dublin	1,439	1,448	+9	+0.6%	-5	+72
Section 38 Voluntary Agencies	2,815	2,821	+6	+0.2%	+8	+111
CHO 9	3,316	3,306	-10	-0.3%	+21	+140
other Community Services	6	6	+0	+1.9%		+1

Older Persons Services Employment by CHO & Admin: Jul 2021

Jul 2021 (Dec 2020 figure: 13,415)	WTE Jun 2021	WTE Jul 2021	WTE change since Jun 21	% change since Jun 21	WTE change since Dec 20	WTE change since Jul 20
Overall	13,414	13,448	+34	+0.3%	+33	-25
CHO 1	1,914	1,908	-5	-0.3%	-9	+23
CHO 2	1,536	1,559	+23	+1.5%	-31	-39
CHO 3	1,089	1,121	+32	+2.9%	+93	+73
CHO 4	2,911	2,892	-19	-0.6%	-38	+25
CHO 5	1,655	1,659	+4	+0.2%	+9	-28
Health Service Executive	332	324	-7	-2.2%	-5	-36
Leopardstown Park Hospital	206	206	+0	+0.1%	-0	+2
Royal Hospital, Donnybrook, Dublin	266	265	-2	-0.6%	-3	-12
Section 38 Voluntary Agencies	473	471	-1	-0.3%	-3	-9
CHO 6	804	796	-9	-1.1%	-8	-45
CHO 7	1,019	1,017	-2	-0.2%	-5	-17
CHO 8	1,476	1,473	-3	-0.2%	-11	-37
Health Service Executive	663	672	+9	+1.4%	+25	+0
Incorporated Orthopaedic Hospital	271	276	+5	+1.8%	+9	+12
Section 38 Voluntary Agencies	271	276	+5	+1.8%	+9	+12
CHO 9	934	948	+14	+1.5%	+34	+13
other Community Services	76	75	-1	-1.8%	-0	+8

Social Care Services Employment by CHO etc. Jul 2021

Bros. of Charity, Clare

Jul 2021 (Dec 2020 figure: 372)	WTE Jun 2021	WTE Jul 2021	WTE change since Jun 21	% change since Jun 21	WTE change since Dec 20	WTE change since Jul 20
Overall	402	399	-2	-0.6%	+27	+58
Consultants	0	0	-0	-23.1%	-0	
Medical & Dental	0	0	-0	-23.1%	-0	
Staff Nurse/ Staff Midwife	3	3	+0	+0.7%	+1	+1
<i>Pre-registration Nurse Intern (COVID-19)</i>		0	+0	-100.0%	+0	-1
Nursing/ Midwifery Student		0	+0	-100.0%	-1	-1
Nursing & Midwifery	3	3	+0	+12.9%	+0	+0
Social Care	85	87	+2	+2.6%	+2	+6
Social Workers	3	3				+2
Psychologists	3	3				
H&SC, Other	3	3			-1	-1
Health & Social Care Professionals	93	96	+2	+2.3%	+1	+7
Management (VIII & above)	1	1				
Administrative/ Supervisory (V to VII)	5	5	-0	-1.2%	+0	+0
Clerical (III & IV)	5	5			+0	+0
Management & Administrative	11	11	-0	-0.5%	+0	+0
Health Care Assistants	260	256	-4	-1.6%	+23	+48
Care, other	35	34	-1	-2.0%	+3	+3
Patient & Client Care	295	290	-5	-1.6%	+26	+50

Jul 2021 (Dec 2020 figure: 592)	WTE Jun 2021	WTE Jul 2021	WTE change since Jun 21	% change since Jun 21	WTE change since Dec 20	WTE change since Jul 20
Overall	587	597	+10	+1.8%	+5	+22
Consultants	1		-1	-100.0%	-2	-2
Medical & Dental	1		-1	-100.0%	-2	-2
Nurse/ Midwife Manager	27	27			-1	-1
Nurse/ Midwife Specialist & AN/MP	4	4			-0	-0
Staff Nurse/ Staff Midwife	88	87	-1	-1.2%	-11	-1
Nursing & Midwifery	119	118	-1	-0.9%	-12	-2
Therapy Professions	15	15	+0	+0.3%	+0	+0
Social Care	104	105	+1	+1.0%	+1	+7
Social Workers	6	6	+0	+1.3%	+1	+2
Psychologists	6	6	+0	+1.4%	+0	
H&SC, Other		0	+0	-100.0%	-0	-1
Health & Social Care Professionals	131	133	+2	+1.3%	+2	+8
Management (VIII & above)	2	2				
Administrative/ Supervisory (V to VII)	7	7	-0	-1.2%	+1	+1
Clerical (III & IV)	10	10			-1	-1
Management & Administrative	19	19	-0	-0.4%	-0	
Support	7	8	+1	+11.5%	+2	+2
Maintenance/ Technical	2	2				
General Support	9	10	+1	+8.9%	+2	+2
Health Care Assistants	206	216	+10	+5.0%	+12	+6
Care, other	102	102	-0	-0.3%	+4	+9
Patient & Client Care	308	318	+10	+3.3%	+16	+15

Jul 2021 (Dec 2020 figure: 776)	WTE Jun 2021	WTE Jul 2021	WTE change since Jun 21	% change since Jun 21	WTE change since Dec 20	WTE change since Jul 20
Overall	802	803	+1	+0.2%	+28	+48
Nurse/ Midwife Manager	11	12	+0	+2.7%	-3	-3
Nurse/ Midwife Specialist & AN/MP	2	2			-1	-2
Staff Nurse/ Staff Midwife	55	54	-1	-1.4%	-1	-2
Nursing & Midwifery	69	68	-0	-0.7%	-5	-7
Therapy Professions	46	45	-1	-2.4%	-1	-2
Social Care	127	127	-1	-0.4%	+4	+0
Social Workers	18	16	-1	-7.9%	-1	-0
Psychologists	20	20	-0	-1.6%	-1	+2
Health & Social Care Professionals	211	207	-3	-1.6%	+1	+0
Management (VIII & above)	8	7	-1	-16.5%	-1	-1
Administrative/ Supervisory (V to VII)	12	12			+2	+2
Clerical (III & IV)	36	36	+0	+0.4%	+1	+1
Management & Administrative	56	55	-1	-2.0%	+2	+1
Support	12	12	-0	-1.2%	-2	-4
Maintenance/ Technical	3	3				+1
General Support	15	15	-0	-1.0%	-2	-3
Health Care Assistants	241	247	+6	+2.6%	+25	+25
Care, other	211	211	+0	+0.1%	+7	+31
Patient & Client Care	452	458	+6	+1.4%	+32	+56

Jul 2021 (Dec 2020 figure: 668)	WTE Jun 2021	WTE Jul 2021	WTE change since Jun 21	% change since Jun 21	WTE change since Dec 20	WTE change since Jul 20
Overall	679	688	+9	+1.4%	+20	+52
Consultants	1	1	+0	+28.4%	+0	+1
Medical & Dental	1	1	+0	+28.4%	+0	+1
Nurse/ Midwife Manager	23	25	+2	+9.1%	+3	+4
Staff Nurse/ Staff Midwife	47	44	-2	-4.9%	-5	-2
Pre-registration Nurse/ Midwife Intern	6	6			+6	+6
Pre-registration Nurse Intern (COVID-19)				-100.0%		-7
Nursing/ Midwifery Student	6	6			+6	-2
Nursing & Midwifery	75	75	-0	-0.3%	+3	-1
Therapy Professions	2	2			+1	-1
Social Care	70	71	+1	+1.6%	+0	+4
Social Workers	8	9	+1	+10.0%	+1	+0
Psychologists	4	4				
H&SC, Other	4	4	+0	+4.6%	+1	-1
Health & Social Care Professionals	88	90	+2	+2.4%	+3	+3
Management (VIII & above)	5	5				
Administrative/ Supervisory (V to VII)	15	16	+1	+8.6%	+1	+1
Clerical (III & IV)	25	23	-1	-4.5%	-4	-1
Management & Administrative	45	45	+0	+0.4%	-3	-0
Support	1	1	+0	+0.7%	-0	+0
Maintenance/ Technical	3	3				
General Support	4	4	+0	+0.2%	-0	+0
Health Care Assistants	369	380	+11	+3.1%	+18	+47
Care, other	97	93	-4	-4.5%	-1	+1
Patient & Client Care	466	473	+7	+1.5%	+17	+49

Jul 2021 (Dec 2020 figure: 214)	WTE Jun 2021	WTE Jul 2021	WTE change since Jun 21	% change since Jun 21	WTE change since Dec 20	WTE change since Jul 20
Overall	220	221	+0	+0.1%	+7	+13
Nurse/ Midwife Manager	13	13	-0	-0.7%	-0	-0
Staff Nurse/ Staff Midwife	25	25	-1	-2.0%	-2	+0
Post-registration Nurse/ Midwife Student				-100.0%		-4
Nursing/ Midwifery Student				-100.0%		-4
Nursing & Midwifery	38	37	-1	-1.6%	-2	-4
Social Care	31	31	-0	-0.4%	+0	-1
Health & Social Care Professionals	31	31	-0	-0.4%	+0	-1
Management (VIII & above)	2	2				
Administrative/ Supervisory (V to VII)	3	3				
Clerical (III & IV)	7	6	-0	-1.4%	+0	+0
Management & Administrative	11	11	-0	-0.8%	+0	+0
Support	5	5	-0	-1.9%	-1	-2
Maintenance/ Technical	2	2	+0	+11.7%	+1	+1
General Support	7	8	+0	+2.0%	-0	-1
Health Care Assistants	83	84	+1	+1.3%	+4	+11
Care, other	50	50	-0	-0.3%	+5	+8
Patient & Client Care	133	134	+1	+0.7%	+9	+19

Central Remedial Clinic

Jul 2021 (Dec 2020 figure: 296)	WTE Jun 2021	WTE Jul 2021	WTE change since Jun 21	% change since Jun 21	WTE change since Dec 20	WTE change since Jul 20
Overall	297	293	-4	-1.5%	-3	+10
Consultants	1	1			-1	-1
Medical/ Dental, other	0	0				
Medical & Dental	1	1			-1	-1
Nurse/ Midwife Manager	2	2				
Nurse/ Midwife Specialist & AN/MP	2	2				
Staff Nurse/ Staff Midwife	3	3			-1	-1
Nursing/ Midwifery other	1	1				
Nursing & Midwifery	8	8	-0	-0.0%	-1	-1
Therapy Professions	76	72	-4	-5.2%	-6	-4
Health Science/ Diagnostics	14	14			+1	+1
Social Workers	7	7			-1	-2
Psychologists	12	11	-1	-5.0%	-1	+1
Health & Social Care Professionals	109	105	-5	-4.2%	-7	-5
Management (VIII & above)	7	7				+2
Administrative/ Supervisory (V to VII)	14	15	+1	+6.9%	+0	+0
Clerical (III & IV)	33	34	+1	+2.4%		+2
Management & Administrative	55	57	+2	+3.3%		+4
Support	13	13			+0	-2
Maintenance/ Technical	2	2				+1
General Support	15	15			+0	-1
Health Care Assistants	60	59	-2	-2.6%	+1	+3
Care, other	49	49	-0	-0.0%	+5	+10
Patient & Client Care	109	108	-2	-1.4%	+5	+13

Jul 2021 (Dec 2020 figure: 395)	WTE Jun 2021	WTE Jul 2021	WTE change since Jun 21	% change since Jun 21	WTE change since Dec 20	WTE change since Jul 20
Overall	414	419	+4	+1.1%	+24	+24
Consultants				-100.0%	-0	-0
Medical/ Dental, other	1	1				
Medical & Dental	1	1			-0	-0
Nurse/ Midwife Manager	33	33			+6	+4
Nurse/ Midwife Specialist & AN/MP	2	2				
Staff Nurse/ Staff Midwife	99	100	+2	+1.8%	-6	-3
Nursing & Midwifery	134	135	+2	+1.4%	+1	+0
Therapy Professions	11	11			-2	+0
Social Care	42	43	+1	+2.4%	+9	+10
Social Workers	5	5			+1	+1
Psychologists	3	3			-2	-2
Pharmacy	0	0				
H&SC, Other	2	2				
Health & Social Care Professionals	63	64	+1	+1.6%	+6	+9
Management (VIII & above)	5	5			+2	+3
Administrative/ Supervisory (V to VII)	16	16			+2	+2
Clerical (III & IV)	15	15			+3	+3
Management & Administrative	36	36			+6	+7
Support	26	25	-1	-3.3%	-2	-2
Maintenance/ Technical	4	4				
General Support	30	29	-1	-2.9%	-2	-2
Health Care Assistants	138	140	+3	+1.8%	+12	+9
Care, other	12	12			+2	+1
Patient & Client Care	150	153	+3	+1.7%	+13	+9

Children's Sunshine Home

Jul 2021 (Dec 2020 figure: 56)	WTE Jun 2021	WTE Jul 2021	WTE change since Jun 21	% change since Jun 21	WTE change since Dec 20	WTE change since Jul 20
Overall	57	58	+1	+1.8%	+2	+2
Nurse/ Midwife Manager	8	8				
Staff Nurse/ Staff Midwife	18	18				-1
Nursing & Midwifery	26	26				-1
Therapy Professions	2	2			+1	+0
Social Workers				-100.0%	-1	-1
Health & Social Care Professionals	2	2			-0	-1
Management (VIII & above)	3	3			+1	+1
Administrative/ Supervisory (V to VII)	4	4				
General Administrative (III & IV)	1	1				
Clerical (III & IV)	1	1				
Management & Administrative	8	8			+1	+1
Support	3	3				
General Support	3	3				
Health Care Assistants	13	14	+1	+7.7%	+1	+0
Care, other	5	5				+2
Patient & Client Care	18	19	+1	+5.5%	+1	+2

Jul 2021 (Dec 2020 figure: 1,147)	WTE Jun 2021	WTE Jul 2021	WTE change since Jun 21	% change since Jun 21	WTE change since Dec 20	WTE change since Jul 20
Overall	1,159	1,157	-2	-0.2%	+10	+32
Nurse/ Midwife Manager	42	42				+1
Nurse/ Midwife Specialist & AN/MP	11	11				+1
Staff Nurse/ Staff Midwife	173	173			-4	+5
Pre-registration Nurse/ Midwife Intern	9	9			+3	+9
Pre-registration Nurse Intern (COVID-19)				-100.0%		-25
Nursing/ Midwifery Student	9	9			+1	-16
Nursing/ Midwifery other				-100.0%		-1
Nursing & Midwifery	235	235			-3	-10
Therapy Professions	37	37				
Social Care	43	43				+9
Social Workers	9	9				
Psychologists	11	11				
H&SC, Other	3	3				
Health & Social Care Professionals	102	102			-0	+9
Management (VIII & above)	7	7				
Administrative/ Supervisory (V to VII)	19	19			-4	-0
Clerical (III & IV)	26	26				+0
Management & Administrative	52	52			-4	+0
Support	85	85			+7	+8
Maintenance/ Technical	7	7			+0	+1
General Support	92	92			+7	+9
Health Care Assistants	600	598	-2	-0.4%	+12	+23
Care, other	78	78			-2	+0
Patient & Client Care	679	677	-2	-0.3%	+10	+24

Daughters of Charity, Dublin

Jul 2021 (Dec 2020 figure: 1,063)	WTE Jun 2021	WTE Jul 2021	WTE change since Jun 21	% change since Jun 21	WTE change since Dec 20	WTE change since Jul 20
Overall	1,079	1,080	+1	+0.1%	+17	+30
Consultants	2	2			-0	-0
<i>Senior Registrar</i>		1	+1	-100.0%	+1	+1
Registrars		1	+1	-100.0%	+1	+1
Medical/ Dental, other	2	2				
Medical & Dental	4	5	+1	+26.2%	+1	+1
Nurse/ Midwife Manager	63	62	-1	-1.2%	+0	+0
Nurse/ Midwife Specialist & AN/MP	12	12			+1	+3
Staff Nurse/ Staff Midwife	183	181	-2	-1.1%	-7	-5
<i>Pre-registration Nurse/ Midwife Intern</i>	11	11			+3	+11
<i>Pre-registration Nurse Intern (COVID-19)</i>				-100.0%		-15
Nursing/ Midwifery Student	11	11			+1	-5
Nursing/ Midwifery other	4	4				
Nursing & Midwifery	273	270	-3	-1.0%	-5	-6
Therapy Professions	34	34			+2	+0
Social Care	192	193	+1	+0.7%	+20	+28
Social Workers	13	12	-1	-8.0%	-1	+1
Psychologists	12	13	+0	+1.6%	+2	+2
Pharmacy	2	2				
H&SC, Other	3	3			-2	-2
Health & Social Care Professionals	256	256	+1	+0.2%	+21	+30
Management (VIII & above)	9	9				+2
Administrative/ Supervisory (V to VII)	29	29			+2	+2
Clerical (III & IV)	31	32	+2	+4.9%	+0	-0
Management & Administrative	68	70	+2	+2.2%	+2	+4
Support	78	77	-1	-0.8%	+1	-1
Maintenance/ Technical	7	7			-1	-1
General Support	85	84	-1	-0.7%	+0	-2
Health Care Assistants	365	367	+2	+0.5%	+0	+5
Care, other	29	28	-0	-0.7%	-3	-2
Patient & Client Care	394	395	+2	+0.4%	-3	+3

Daughters of Charity, Limerick

Jul 2021 (Dec 2020 figure: 549)	WTE Jun 2021	WTE Jul 2021	WTE change since Jun 21	% change since Jun 21	WTE change since Dec 20	WTE change since Jul 20
Overall	545	545	+0	+0.1%	-4	-10
Medical/ Dental, other	1	1				
Medical & Dental	1	1				
Nurse/ Midwife Manager	33	33			+1	-2
Nurse/ Midwife Specialist & AN/MP	5	5			-1	-2
Staff Nurse/ Staff Midwife	146	145	-1	-0.5%	-7	+2
<i>Pre-registration Nurse/ Midwife Intern</i>	8	8			-4	+8
<i>Pre-registration Nurse Intern (COVID-19)</i>				-100.0%		-23
Nursing/ Midwifery Student	8	8			+8	-15
Nursing/ Midwifery other	3	3				
Nursing & Midwifery	195	194	-1	-0.4%	+0	-17
Therapy Professions	14	14			-2	-1
Social Care	63	66	+3	+4.7%	-1	+10
Social Workers	5	5			+0	
Psychologists	6	6			-1	-1
H&SC, Other	6	6			+0	+0
Health & Social Care Professionals	95	98	+3	+3.1%	-3	+9
Management (VIII & above)	2	2				
Administrative/ Supervisory (V to VII)	11	11				+1
Clerical (III & IV)	14	14			-0	-0
Management & Administrative	27	27			-0	+1
Support	42	42			-1	-2
Maintenance/ Technical	4	4				
General Support	47	47			-1	-2
Health Care Assistants	157	156	-2	-1.1%	-0	-2
Care, other	23	23	-0	-0.5%	+0	+1
Patient & Client Care	181	179	-2	-1.0%	-0	-1

Daughters of Charity, Roscrea

Jul 2021 (Dec 2020 figure: 289)	WTE Jun 2021	WTE Jul 2021	WTE change since Jun 21	% change since Jun 21	WTE change since Dec 20	WTE change since Jul 20
Overall	286	292	+6	+2.2%	+3	+3
Nurse/ Midwife Manager	15	15	-0	-0.0%	+0	-1
Staff Nurse/ Staff Midwife	18	18			-1	-1
Nursing/ Midwifery other	1	1				
Nursing & Midwifery	34	34			-1	-1
Therapy Professions	2	2				
Social Care	25	25	+0	+0.0%	+0	+1
Social Workers	1	1				
Psychologists	1	1				
Health & Social Care Professionals	29	29	+0	+0.0%	+0	+1
Management (VIII & above)	1	1				
Administrative/ Supervisory (V to VII)	7	7			-1	
Clerical (III & IV)	7	7			+1	+0
Management & Administrative	15	15			-0	+0
Support	4	4				
Maintenance/ Technical	5	5				
General Support	9	9				
Health Care Assistants	198	204	+6	+3.1%	+4	+3
Care, other	2	2				
Patient & Client Care	199	205	+6	+3.1%	+4	+3

Jul 2021 (Dec 2020 figure: 267)	WTE Jun 2021	WTE Jul 2021	WTE change since Jun 21	% change since Jun 21	WTE change since Dec 20	WTE change since Jul 20
Overall	271	276	+5	+1.8%	+9	+12
Consultants	2	2				
Registrars	2	3	+1	+50.0%	+1	+1
SHO/ Interns	4	6	+2	+50.0%	+2	+2
Medical & Dental	8	11	+3	+39.5%	+3	+3
Nurse/ Midwife Manager	18	18				+1
Staff Nurse/ Staff Midwife	70	70				-4
Nursing & Midwifery	88	88				-3
Therapy Professions	35	35			+1	+5
Health Science/ Diagnostics	1	1				
Social Workers	9	9				+1
Pharmacy	4	4				
Health & Social Care Professionals	49	49	-0	-0.0%	+1	+6
Management (VIII & above)	2	2				+1
Administrative/ Supervisory (V to VII)	7	7			+1	+1
Clerical (III & IV)	10	10				-1
Management & Administrative	19	19			+1	+1
Support	40	40				
Maintenance/ Technical	2	2				
General Support	42	42				+0
Health Care Assistants	66	68	+2	+3.1%	+4	+5
Care, other	0	0				
Patient & Client Care	66	68	+2	+3.0%	+4	+5

Kare, Newbridge, Co Kildare

Jul 2021 (Dec 2020 figure: 377)	WTE Jun 2021	WTE Jul 2021	WTE change since Jun 21	% change since Jun 21	WTE change since Dec 20	WTE change since Jul 20
Overall	394	395	+1	+0.3%	+18	+60
Nurse/ Midwife Manager	8	8			+1	-0
Staff Nurse/ Staff Midwife	22	21	-1	-6.6%	-4	-1
Nursing & Midwifery	31	29	-1	-4.8%	-4	-1
Therapy Professions	15	15	-0	-1.4%	+2	+2
Social Care	74	75	+2	+2.3%	+7	+16
Social Workers	3	3	-0	-6.9%	-1	-1
Psychologists	7	8	+0	+5.6%	+0	+2
Health & Social Care Professionals	99	101	+2	+1.6%	+9	+20
Management (VIII & above)	6	6				+1
Administrative/ Supervisory (V to VII)	13	13	+0	+0.7%	-1	-0
Clerical (III & IV)	15	15			+1	+2
Management & Administrative	34	34	+0	+0.3%	+0	+2
Support	1	1			-0	-0
General Support	1	1			-0	-0
Health Care Assistants	115	115	-0	-0.0%	+10	+31
Care, other	113	115	+1	+1.0%	+2	+9
Patient & Client Care	229	230	+1	+0.5%	+12	+40

Leopardstown Park Hospital

Jul 2021 (Dec 2020 figure: 207)	WTE Jun 2021	WTE Jul 2021	WTE change since Jun 21	% change since Jun 21	WTE change since Dec 20	WTE change since Jul 20
Overall	206	206	+0	+0.1%	-0	+2
Medical/ Dental, other				-100.0%	-1	-1
Medical & Dental				-100.0%	-1	-1
Nurse/ Midwife Manager	13	15	+2	+18.9%	+2	-1
Staff Nurse/ Staff Midwife	40	39	-1	-2.9%	-3	-0
Nursing & Midwifery	53	54	+1	+2.4%	-2	-1
Therapy Professions	9	9	+0	+3.3%	-0	+2
Social Workers		0	+0	-100.0%	-1	-1
Pharmacy	2	2	+0	+19.6%	+0	+0
Health & Social Care Professionals	11	12	+1	+10.7%	-0	+2
Management (VIII & above)	1	1				
Administrative/ Supervisory (V to VII)	6	6	-0	-3.3%	-1	-1
Clerical (III & IV)	11	12	+0	+4.3%	-0	+1
Management & Administrative	18	18	+0	+1.5%	-1	-0
Support	36	36	-0	-1.3%	+2	+0
Maintenance/ Technical	4	4				
General Support	40	40	-0	-1.2%	+2	+0
Health Care Assistants	81	79	-2	-2.4%	+2	+4
Care, other	3	3	-0	-2.5%	-0	-1
Patient & Client Care	84	82	-2	-2.4%	+2	+3

Muiriosa Foundation, Laois/Offaly

Jul 2021 (Dec 2020 figure: 320)	WTE Jun 2021	WTE Jul 2021	WTE change since Jun 21	% change since Jun 21	WTE change since Dec 20	WTE change since Jul 20
Overall	347	352	+5	+1.4%	+32	+62
Nurse/ Midwife Manager	17	17			+1	+2
Staff Nurse/ Staff Midwife	30	30	-0	-0.5%	+1	+3
Nursing & Midwifery	47	47	-0	-0.3%	+2	+5
Social Care	110	111	+1	+1.2%	+6	+14
Social Workers	4	4	+0	+7.3%	+1	+1
Psychologists	1	1				
H&SC, Other	1	1				
Health & Social Care Professionals	115	117	+2	+1.4%	+7	+14
Management (VIII & above)	3	3				+2
Administrative/ Supervisory (V to VII)	3	3			-2	-2
Clerical (III & IV)	14	15	+1	+8.6%	+4	+4
Management & Administrative	20	21	+1	+6.0%	+2	+4
Support	2	1	-0	-9.3%	+0	+0
Maintenance/ Technical	2	2				
General Support	4	3	-0	-3.9%	+0	+0
Health Care Assistants	133	136	+2	+1.7%	+21	+40
Care, other	28	28	+0	+0.5%	+0	-1
Patient & Client Care	161	164	+2	+1.5%	+22	+39

Muiriosa Foundation, Longford/Westmeath

Jul 2021 (Dec 2020 figure: 284)	WTE Jun 2021	WTE Jul 2021	WTE change since Jun 21	% change since Jun 21	WTE change since Dec 20	WTE change since Jul 20
Overall	289	294	+5	+1.8%	+10	+25
Nurse/ Midwife Manager	8	7	-1	-11.9%	-2	-3
Staff Nurse/ Staff Midwife	4	4	+0	+0.7%	-0	-0
Nursing & Midwifery	12	11	-1	-7.4%	-2	-3
Therapy Professions	2	2	-0	-10.3%	-1	-1
Social Care	94	94	+0	+0.2%	-5	-2
Social Workers	4	4			+0	+0
Psychologists	2	2			+0	-0
H&SC, Other	3	3	+0	+4.4%	+1	+0
Health & Social Care Professionals	106	106	+0	+0.0%	-5	-2
Senior Management (VIII & GM)	1	1			+1	+1
Management (VIII & above)	1	1			+1	+1
Administrative/ Supervisory (V to VII)	4	4				-1
Clerical (III & IV)	12	12	+1	+4.2%	+2	+2
Management & Administrative	17	17	+1	+3.0%	+3	+2
Support	1	1				
Maintenance/ Technical	3	3				
General Support	4	4				
Health Care Assistants	135	141	+6	+4.2%	+15	+29
Care, other	15	15			-0	-1
Patient & Client Care	151	156	+6	+3.8%	+15	+28

Jul 2021 (Dec 2020 figure: 342)	WTE Jun 2021	WTE Jul 2021	WTE change since Jun 21	% change since Jun 21	WTE change since Dec 20	WTE change since Jul 20
Overall	347	352	+5	+1.5%	+10	+8
Nurse/ Midwife Manager	15	15	+1	+3.7%	+2	+1
Nurse/ Midwife Specialist & AN/MP	2	2	-0	-1.9%	-0	+0
Staff Nurse/ Staff Midwife	22	21	-0	-1.7%	-1	-2
Pre-registration Nurse/ Midwife Intern	6	6	-0	-5.7%	+6	+6
Pre-registration Nurse Intern (COVID-19)	0	0	-0	-10.6%	+0	-8
Nursing/ Midwifery Student	7	6	-0	-6.1%	+6	-2
Nursing/ Midwifery other	6	6	-0	-4.1%	-1	-1
Nursing & Midwifery	51	51	-1	-1.0%	+7	-4
Therapy Professions	6	6			-2	-1
Social Care	95	95	-1	-0.5%	+0	+3
Social Workers	1	1	-0	-29.6%	-2	-1
Psychologists	2	2				+0
H&SC, Other	3	3				
Health & Social Care Professionals	107	106	-1	-0.9%	-3	+0
Management (VIII & above)	4	4				-1
Administrative/ Supervisory (V to VII)	12	12	-0	-0.4%	-1	-2
Clerical (III & IV)	18	23	+5	+28.3%	+10	+9
Management & Administrative	34	39	+5	+14.8%	+10	+6
Support	13	13	-0	-0.8%	-1	-1
Maintenance/ Technical	4	4				-1
General Support	17	17	-0	-0.6%	-1	-2
Health Care Assistants	129	130	+2	+1.2%	-2	+7
Care, other	9	9	+0	+0.8%	+0	+1
Patient & Client Care	138	139	+2	+1.2%	-2	+8

Peamount Hospital (Newcastle)

Jul 2021 (Dec 2020 figure: 483)	WTE Jun 2021	WTE Jul 2021	WTE change since Jun 21	% change since Jun 21	WTE change since Dec 20	WTE change since Jul 20
Overall	531	535	+4	+0.8%	+53	+10
Registrars	2	2	+0	+1.0%	+0	+0
SHO/ Interns	8	7	-1	-7.6%	+0	-0
Medical & Dental	10	9	-1	-5.9%	+0	-0
Nurse/ Midwife Manager	34	35	+1	+2.6%	+7	+4
Nurse/ Midwife Specialist & AN/MP	2	2				+2
Staff Nurse/ Staff Midwife	93	92	-1	-0.9%	+17	+2
Nursing/ Midwifery other	1	1				+1
Nursing & Midwifery	130	130	+0	+0.0%	+24	+10
Therapy Professions	39	39	-0	-0.2%	+10	-1
Health Science/ Diagnostics	3	2	-1	-30.1%	-1	-1
Social Care	4	5	+1	+25.0%	+1	+0
Social Workers	5	6	+0	+6.0%	+1	-1
Psychologists		0	+0	-100.0%	+0	+0
Psychologists		0	+0	-100.0%	+0	+0
Pharmacy	4	5	+0	+10.4%	+1	-1
Health & Social Care Professionals	55	56	+1	+2.1%	+12	-2
Management (VIII & above)	4	5	+1	+25.0%	+1	+1
Administrative/ Supervisory (V to VII)	17	19	+2	+9.6%	+2	+1
Clerical (III & IV)	21	19	-2	-11.0%	-0	+1
Management & Administrative	43	43	+0	+0.7%	+3	+3
Support	44	44	-0	-0.7%	-1	-3
Maintenance/ Technical	9	8	-1	-9.0%	-1	-1
General Support	53	52	-1	-2.2%	-1	-4
Health Care Assistants	239	243	+4	+1.8%	+17	+5
Care, other	1	1			-2	-2
Patient & Client Care	240	244	+4	+1.8%	+14	+3

Jul 2021 (Dec 2020 figure: 268)	WTE Jun 2021	WTE Jul 2021	WTE change since Jun 21	% change since Jun 21	WTE change since Dec 20	WTE change since Jul 20
Overall	266	265	-2	-0.6%	-3	-12
Registrars	2	2			+1	+1
Medical/ Dental, other	1	1				
Medical & Dental	3	3			+1	+1
Nurse/ Midwife Manager	17	17			-1	-3
Staff Nurse/ Staff Midwife	72	71	-1	-1.4%	-3	-5
Nursing & Midwifery	89	88	-1	-1.1%	-3	-8
Therapy Professions	31	33	+3	+8.1%	+4	+5
Social Workers	6	6				
Psychologists	1	1				
Health & Social Care Professionals	37	39	+3	+6.8%	+4	+5
Management (VIII & above)	1	1				+1
Administrative/ Supervisory (V to VII)	8	8			+3	+2
Clerical (III & IV)	9	9			-1	+0
Management & Administrative	18	18			+2	+3
Support	33	33			-1	-1
Maintenance/ Technical	4	4			-1	-1
General Support	37	37			-2	-2
Health Care Assistants	83	80	-3	-3.6%	-5	-11
Care, other	1	1			-1	-1
Patient & Client Care	84	81	-3	-3.6%	-6	-11

Stewart's Hospital, (Palmerstown)

Jul 2021 (Dec 2020 figure: 914)	WTE Jun 2021	WTE Jul 2021	WTE change since Jun 21	% change since Jun 21	WTE change since Dec 20	WTE change since Jul 20
Overall	934	939	+5	+0.5%	+25	+76
Consultants	0	0				
Medical & Dental	0	0				
Nurse/ Midwife Manager	32	33	+1	+3.1%	+2	+2
Staff Nurse/ Staff Midwife	83	82	-1	-1.2%	+1	+8
Pre-registration Nurse/ Midwife Intern	8	8			+8	+8
Pre-registration Nurse Intern (COVID-19)				-100.0%		-15
Nursing/ Midwifery Student	8	8			+8	-8
Nursing/ Midwifery other	2	2			+1	+1
Nursing & Midwifery	124	124	-0	-0.0%	+11	+3
Therapy Professions	16	19	+3	+19.3%	-0	+4
Social Care	12	16	+4	+29.2%	+3	+3
Social Workers	6	6				
Psychologists	5	5			+1	+1
Health & Social Care Professionals	38	45	+6	+16.9%	+3	+8
Management (VIII & above)	17	17			+1	+6
Administrative/ Supervisory (V to VII)	19	20	+1	+5.2%	+4	+3
Clerical (III & IV)	25	25	-1	-2.0%	+1	+3
Management & Administrative	62	62	+1	+0.8%	+5	+12
Support	53	52	-1	-2.7%	-3	-5
Maintenance/ Technical	7	7			+1	+3
General Support	60	59	-1	-2.4%	-2	-2
Health Care Assistants	528	528			+9	+49
Care, other	121	121	-1	-0.5%	-1	+7
Patient & Client Care	650	649	-1	-0.1%	+7	+56

Jul 2021 (Dec 2020 figure: 648)	WTE Jun 2021	WTE Jul 2021	WTE change since Jun 21	% change since Jun 21	WTE change since Dec 20	WTE change since Jul 20
Overall	652	663	+10	+1.6%	+14	+17
Registrars	1	1				
Medical & Dental	1	1				
Nurse/ Midwife Manager	44	43	-2	-3.7%	-4	-2
Nurse/ Midwife Specialist & AN/MP	4	4			+1	+0
Staff Nurse/ Staff Midwife	163	164	+1	+0.9%	+12	+19
<i>Pre-registration Nurse Intern (COVID-19)</i>				-100.0%		-21
Nursing/ Midwifery Student				-100.0%	-4	-21
<i>Nursing Education/Clinical</i>	1	1	+0	+72.4%	+1	+1
Nursing/ Midwifery other	1	1	+0	+72.4%	+1	+1
Nursing & Midwifery	212	212	+0	+0.1%	+6	-3
Therapy Professions	3	3				
Social Care	74	77	+2	+3.4%	+1	+1
Social Workers	2	2				
Psychologists	1	1				
Health & Social Care Professionals	80	82	+2	+3.1%	+1	+1
Management (VIII & above)	2	2			+1	+1
Administrative/ Supervisory (V to VII)	6	6	-0	-6.8%	-0	-0
Clerical (III & IV)	11	11	-0	-0.1%	-0	-0
Management & Administrative	19	19	-0	-2.2%	+1	+1
Support	19	19	+0	+2.0%	-0	-1
Maintenance/ Technical	3	3			+0	+0
General Support	22	22	+0	+1.7%	-0	-1
Health Care Assistants	287	295	+8	+2.7%	+7	+22
Care, other	32	32	+0	+0.2%	-1	-2
Patient & Client Care	319	327	+8	+2.4%	+7	+20

St. John of God (IDS)

Jul 2021 (Dec 2020 figure: 468)	WTE Jun 2021	WTE Jul 2021	WTE change since Jun 21	% change since Jun 21	WTE change since Dec 20	WTE change since Jul 20
Overall	455	452	-3	-0.7%	-16	+4
Medical & Dental	1	1				
Nurse/ Midwife Manager	9	9			+1	+1
Staff Nurse/ Staff Midwife	49	48	-1	-2.3%	-1	+3
Nursing & Midwifery	58	57	-1	-1.9%	-0	+4
Therapy Professions	11	10	-0	-4.6%	-3	-0
Social Care	154	155	+1	+0.4%	-5	+6
Social Workers	3	4	+1	+33.3%	+1	+1
Psychologists	6	6	-1	-10.4%	-1	-0
Health & Social Care Professionals	174	174	+0	+0.2%	-7	+6
Management (VIII & above)	15	15	+0	+0.9%	+1	+0
Administrative/ Supervisory (V to VII)	27	26	-1	-4.5%	-1	+0
Clerical (III & IV)	17	18	+2	+10.6%	-0	-0
Management & Administrative	59	59	+1	+1.1%	-0	+0
Support	12	12	+0	+1.6%	-0	-0
Maintenance/ Technical	5	5				
General Support	17	17	+0	+1.1%	-0	-0
Health Care Assistants	20	20	-1	-2.7%	+2	+3
Care, other	127	124	-3	-2.2%	-10	-9
Patient & Client Care	147	143	-3	-2.3%	-8	-6

St. John of God, Kerry

Jul 2021 (Dec 2020 figure: 320)	WTE Jun 2021	WTE Jul 2021	WTE change since Jun 21	% change since Jun 21	WTE change since Dec 20	WTE change since Jul 20
Overall	330	328	-2	-0.7%	+8	+15
Nurse/ Midwife Manager	15	15	+0	+0.6%	+1	+0
Staff Nurse/ Staff Midwife	47	45	-2	-4.4%	-2	-2
Nursing & Midwifery	63	61	-2	-3.2%	-1	-2
Therapy Professions	4	4	-0	-0.5%	+0	+1
Social Care	48	48	-0	-0.9%	+2	+4
Social Workers	1	1	-0	-32.0%	-0	
Psychologists	1	1	+0	+7.7%	+0	+1
Health & Social Care Professionals	54	54	-1	-1.3%	+2	+5
Management (VIII & above)	2	3	+1	+22.3%	+2	+2
Administrative/ Supervisory (V to VII)	7	7	-0	-0.9%	-1	-0
Clerical (III & IV)	8	8	+0	+1.7%	-0	-1
Management & Administrative	17	18	+1	+3.4%	+1	+0
General Support	30	31	+1	+4.7%	+1	+2
Health Care Assistants	118	119	+0	+0.3%	+5	+5
Care, other	48	46	-2	-4.2%	-0	+5
Patient & Client Care	166	165	-2	-1.0%	+5	+10

Jul 2021 (Dec 2020 figure: 801)	WTE Jun 2021	WTE Jul 2021	WTE change since Jun 21	% change since Jun 21	WTE change since Dec 20	WTE change since Jul 20
Overall	775	798	+22	+2.9%	-3	+30
Registrars	1	2	+1	+56.0%	+1	+1
Medical & Dental	1	2	+1	+56.0%	+1	+1
Nurse/ Midwife Manager	21	22	+1	+6.2%	+0	-1
Nurse/ Midwife Specialist & AN/MP	1	1				
Staff Nurse/ Staff Midwife	93	98	+5	+5.7%	+7	+9
Nursing & Midwifery	114	121	+7	+5.7%	+7	+8
Therapy Professions	12	13	+1	+8.3%	-1	-5
Social Care	262	271	+8	+3.2%	+1	+19
Social Workers	6	6	+0	+3.7%	+0	+0
Psychologists	5	5			-1	-2
Health & Social Care Professionals	285	294	+10	+3.4%	-1	+13
Management (VIII & above)	6	5	-1	-16.3%	-0	-1
Administrative/ Supervisory (V to VII)	10	10	-0	-0.4%	-1	+0
Clerical (III & IV)	20	20	-1	-3.6%	+2	+0
Management & Administrative	36	35	-2	-4.7%	+0	-0
Support	28	26	-1	-4.8%	-2	-3
Maintenance/ Technical	14	14			-0	+1
General Support	42	40	-1	-3.2%	-2	-3
Health Care Assistants	162	168	+6	+3.5%	+2	+10
Care, other	135	138	+3	+2.3%	-11	+1
Patient & Client Care	297	306	+9	+2.9%	-8	+11

Jul 2021 (Dec 2020 figure: 1,453)	WTE Jun 2021	WTE Jul 2021	WTE change since Jun 21	% change since Jun 21	WTE change since Dec 20	WTE change since Jul 20
Overall	1,439	1,448	+9	+0.6%	-5	+72
Consultants	5	6	+1	+16.8%	+0	+0
Registrars	1	1	+0	+1.0%	+0	-1
Medical/ Dental, other	4	4				
Medical & Dental	10	11	+1	+9.1%	+0	-0
Nurse/ Midwife Manager	87	87	+0	+0.4%	-1	+0
Staff Nurse/ Staff Midwife	162	160	-2	-1.0%	-5	+9
Nursing & Midwifery	248	247	-1	-0.5%	-6	+9
Therapy Professions	53	52	-1	-1.1%	+7	-2
Social Care	586	595	+8	+1.4%	+30	+67
Social Workers	20	19	-0	-1.3%	-3	-1
Psychologists	20	19	-1	-4.7%	-5	
H&SC, Other	9	9			+0	-1
Health & Social Care Professionals	688	694	+6	+0.9%	+30	+63
Management (VIII & above)	20	21	+1	+2.8%	+1	-1
Administrative/ Supervisory (V to VII)	49	49			+3	+7
Clerical (III & IV)	46	47	+1	+1.7%	-7	-4
Management & Administrative	115	116	+1	+1.2%	-4	+2
Support	43	42	-1	-2.1%	-6	-25
Maintenance/ Technical	12	12	-0	-0.7%	-0	-0
General Support	55	54	-1	-1.8%	-6	-25
Health Care Assistants	303	306	+4	+1.2%	-15	+29
Care, other	20	19	-1	-7.0%	-5	-5
Patient & Client Care	323	325	+2	+0.7%	-20	+24

St. Patrick's, Kilkenny

Jul 2021 (Dec 2020 figure: 287)	WTE Jun 2021	WTE Jul 2021	WTE change since Jun 21	% change since Jun 21	WTE change since Dec 20	WTE change since Jul 20
Overall	290	283	-7	-2.4%	-4	-5
Nurse/ Midwife Manager	11	12	+1	+7.3%	-0	+1
Staff Nurse/ Staff Midwife	25	25	+0	+1.8%	-1	+0
Pre-registration Nurse/ Midwife Intern	1	1			+1	+1
Nursing/ Midwifery Student	1	1			+1	+1
Nursing & Midwifery	37	38	+1	+3.4%	-1	+2
Social Care	25	24	-1	-4.8%	-5	-3
Social Workers	1	1			-0	+1
H&SC, Other	2	2			-0	-1
Health & Social Care Professionals	28	27	-1	-4.4%	-5	-4
Executive Management	1	1			+1	
Management (VIII & above)	1	1				
Administrative/ Supervisory (V to VII)	6	6				+0
Clerical (III & IV)	12	12	-0	-1.1%	-0	-1
Management & Administrative	19	19	-0	-0.7%	-0	-0
Support	1		-1	-100.0%	-1	-3
Maintenance/ Technical	2	2			-1	-1
General Support	3	2	-1	-26.5%	-2	-4
Patient & Client Care	203	197	-6	-3.0%	+4	+1

Sunbeam House Services

Jul 2021 (Dec 2020 figure: 450)	WTE Jun 2021	WTE Jul 2021	WTE change since Jun 21	% change since Jun 21	WTE change since Dec 20	WTE change since Jul 20
Overall	476	478	+1	+0.3%	+28	+45
Nurse/ Midwife Manager	5	5			+1	+2
Staff Nurse/ Staff Midwife	31	30	-1	-2.6%	-2	+2
Nursing & Midwifery	36	35	-1	-2.3%	-1	+4
Therapy Professions	3	3	-0	-0.9%	+1	+2
Social Care	210	212	+2	+0.9%	+17	+47
Social Workers	3	3			+1	+1
Psychologists				-100.0%		-2
H&SC, Other				-100.0%		
Health & Social Care Professionals	217	219	+2	+0.8%	+19	+49
Management (VIII & above)	9	9				-1
Administrative/ Supervisory (V to VII)	11	11	+0	+0.7%	+2	+1
Clerical (III & IV)	25	24	-1	-2.8%	-0	-11
Management & Administrative	45	44	-1	-1.4%	+2	-11
Support	4	6	+2	+36.5%	-2	-22
Maintenance/ Technical	1	1			+1	-1
General Support	5	7	+2	+29.6%	-1	-22
Health Care Assistants	74	71	-3	-4.7%	+5	+8
Care, other	99	102	+3	+2.9%	+3	+18
Patient & Client Care	174	173	-1	-0.3%	+9	+26

Bros. of Charity, West Region

Jul 2021 (Dec 2020 figure: 1,298)	WTE Jun 2021	WTE Jul 2021	WTE change since Jun 21	% change since Jun 21	WTE change since Dec 20	WTE change since Jul 20
Overall	1,326	1,332	+6	+0.5%	+34	+66
Consultants	2	2	-1	-20.8%	-1	-1
Registrars	2	2				-0
Medical & Dental	4	4	-1	-11.4%	-1	-1
Nurse/ Midwife Manager	70	70	+0	+0.0%	+1	+2
Nurse/ Midwife Specialist & AN/MP	5	4	-0	-9.1%	-0	+0
Staff Nurse/ Staff Midwife	116	115	-1	-0.5%	-8	-1
<i>Pre-registration Nurse Intern (COVID-19)</i>				-100.0%		-1
Nursing/ Midwifery Student				-100.0%	-1	-1
Nursing & Midwifery	190	189	-1	-0.5%	-8	+0
Therapy Professions	30	27	-2	-8.3%	-2	-0
Social Care	228	232	+4	+1.8%	+21	+24
Social Workers	27	26	-1	-4.1%	-0	+0
Psychologists	13	13			+1	+1
H&SC, Other	12	10	-2	-17.6%	-1	-3
Health & Social Care Professionals	310	309	-2	-0.5%	+19	+22
Management (VIII & above)	14	13	-1	-6.3%		
Administrative/ Supervisory (V to VII)	37	39	+2	+5.9%	+2	+4
Clerical (III & IV)	37	36	-1	-2.3%	-2	+1
Management & Administrative	87	88	+0	+0.5%	+1	+5
Support	44	42	-2	-3.8%	-1	+7
Maintenance/ Technical	5	5				
General Support	49	48	-2	-3.4%	-1	+7
Health Care Assistants	565	580	+15	+2.6%	+31	+38
Care, other	119	115	-4	-3.6%	-8	-6
Patient & Client Care	684	695	+10	+1.5%	+24	+32

Social Care Services Employment by Grade Group: Jul 2021

Jul 2021 (Dec 2020 figure: 32,359)	WTE Jun 2021	WTE Jul 2021	WTE change since Jun 21	% change since Jun 21	WTE change since Dec 20	WTE change since Jul 20
Overall	32,737	32,780	+42	+0.1%	+420	+888
Consultant Medicine	4	4			-0	-0
Consultant Paediatrics	3	2	-1	-20.0%	-1	-1
Consultant Psychiatry	19	19	+0	+0.5%	-3	-1
Consultants	25	25	-0	-1.6%	-4	-2
Registrar	11	14	+3	+22.2%	+5	+5
Senior Registrar	3	3			-1	-1
Specialist Registrar	6	5	-1	-11.3%	+1	+0
Registrars	20	22	+2	+9.0%	+5	+4
SHO/ Interns	22	22	-0	-0.8%	-1	+0
Medical/ Dental, other	98	98	-0	-0.2%	-20	-1
Medical & Dental	166	167	+1	+0.6%	-20	+1
Clinical Nurse/ Midwife Manager	1,376	1,389	+13	+0.9%	+39	+34
Director Nursing/Midwifery, Assistant	151	149	-2	-1.4%	-3	+4
Director of Nursing/Midwifery	143	142	-1	-0.8%	+1	+2
Nurse/ Midwife Manager	1,670	1,680	+10	+0.6%	+36	+40
Advanced Nurse/ Midwife Practitioner	27	27	-0	-0.2%	+3	+13
Clinical Nurse/ Midwife Specialist	78	79	+1	+1.0%	+1	-3
Nurse/ Midwife Specialist & AN/MP	105	106	+1	+0.7%	+4	+10
Staff Midwives	1	1	+0	+2.5%	-0	+1
Staff Nurse [Intellectual Disability]	1,763	1,728	-36	-2.0%	-62	+155
Staff Nurse [Psychiatric]	208	213	+6	+2.7%	+155	+152
Staff Nurses [General/ Children's]	3,301	3,313	+12	+0.4%	-56	-188
Staff Nurse/ Staff Midwife	5,273	5,254	-18	-0.3%	+37	+120
Public Health Nurse	23	22	-0	-1.0%	+2	+3
Pre-registration Nurse/ Midwife Intern	78	78	-0	-0.4%	+75	+71
Pre-registration Nurse Intern (COVID-19)	5	2	-3	-64.8%	-30	-153
Post-registration Nurse/ Midwife Student				-100.0%		-4
Nursing/ Midwifery awaiting registration	4	3	-0	-11.0%	-11	-10
Nursing/ Midwifery Student	87	83	-4	-4.6%	+34	-96
Nursing Education/Clinical	28	25	-3	-9.4%	-1	-1
Other Nursing/ Midwifery	2	2			+1	+1
Nursing/ Midwifery other	30	27	-3	-8.8%	-0	-0
Nursing & Midwifery	7,187	7,173	-15	-0.2%	+113	+76
Dietitians	44	43	-1	-1.3%	+9	+2
Occupational Therapists	415	416	+1	+0.3%	+25	+27
Physiotherapists	346	341	-5	-1.6%	+16	+24
Podiatrists & Chiropodists	15	13	-2	-12.2%	+1	+1
Speech & Language Therapists	338	330	-8	-2.4%	+3	+8
Therapy Professions	1,159	1,144	-15	-1.3%	+53	+62
Clinical Engineering	14	15	+1	+10.1%	+2	+3
Clinical Measurement	2	2			-0	-0
Medical Science	4	4				
Radiographers	6	5	-1	-15.3%	-1	-1
Health Science/ Diagnostics	25	26	+0	+1.9%	+1	+2
Social Care	2,860	2,899	+38	+1.3%	+107	+278
Social Workers	331	327	-4	-1.2%	-1	+8
Psychologists	234	233	-2	-0.7%	+3	+18
Pharmacy	25	27	+2	+6.6%	+4	+2

Jul 2021 (Dec 2020 figure: 32,359)	WTE Jun 2021	WTE Jul 2021	WTE change since Jun 21	% change since Jun 21	WTE change since Dec 20	WTE change since Jul 20
Overall	32,737	32,780	+42	+0.1%	+420	+888
Counsellor Therapists	21	23	+2	+8.3%	+3	+2
Other Health & Social Care	42	37	-4	-10.3%	-8	-13
Play Therapists/ Specialists	11	12	+1	+6.1%	-0	-2
H&SC, Other	74	72	-2	-2.6%	-5	-13
Health & Social Care Professionals	4,708	4,727	+19	+0.4%	+160	+357
Executive Management	53	54	+1	+1.9%	+3	+7
Senior Management (VIII & GM)	244	245	+1	+0.4%	+13	+28
Management (VIII & above)	297	299	+2	+0.7%	+16	+35
Middle Management (V-VII)	727	737	+10	+1.3%	+50	+84
Other Administrative	14	14			-2	-2
Administrative/ Supervisory (V to VII)	741	751	+10	+1.3%	+48	+82
Clerical (III & IV)	1,296	1,287	-9	-0.7%	+15	+41
Management & Administrative	2,333	2,336	+3	+0.1%	+79	+158
Catering	303	297	-6	-1.9%	-15	-33
Household Services	887	864	-23	-2.6%	-21	-59
Other Labs & Associated	1	1	+0	+4.0%	+0	+0
Other Support	171	171	+0	+0.2%	+6	-14
Portering	93	93	-0	-0.4%	-8	-14
Support	1,454	1,426	-28	-2.0%	-38	-119
Maintenance	212	205	-7	-3.4%	-11	-17
Technical Services	16	18	+2	+11.8%	+7	+11
Maintenance/ Technical	228	223	-5	-2.3%	-5	-6
General Support	1,682	1,649	-34	-2.0%	-42	-125
HCA (Student Nurse/Midwife COVID-19)	6	5	-1	-14.8%	-17	-462
HCA, Nurse's Aide, etc.	11,334	11,341	+7	+0.1%	+181	+521
Health & Social Care Assistants	45	47	+2	+4.9%	+8	+10
Health Care Assistants	11,385	11,393	+9	+0.1%	+173	+69
Home Help	3,399	3,453	+55	+1.6%	-71	+205
Care, other	1,876	1,882	+5	+0.3%	+29	+148
Patient & Client Care	16,660	16,728	+68	+0.4%	+130	+421

Employment by WTE, Headcount, Gender, Full-Time /Part-Time etc.: Jul 2021

Social Care Services Staff Group	WTE	Headcount	WTE: no.	% Male	% female	Male WTE: no.	Female WTE: no.	% Total Perm	% Male Perm	% Female Perm	% Total Full Time	% Total Part Time	% Male FT	% Female FT
Overall	32,780	39,336	1.20	16.7%	83.3%	1.12	1.22	85.3%	84.1%	85.6%	58.0%	42.0%	72.7%	55.1%
Consultant Medicine	4	7	1.59	14.3%	85.7%	2.00	1.54	85.7%	85.7%	83.3%	28.6%	71.4%	0.0%	33.3%
Consultant Paediatrics	2	5	2.50		100.0%		2.50	80.0%	80.0%	80.0%	20.0%	80.0%		20.0%
Consultant Psychiatry	19	24	1.28	20.8%	79.2%	1.00	1.39	79.2%	79.2%	78.9%	58.3%	41.7%	100.0%	47.4%
Consultants	25	36	1.44	16.7%	83.3%	1.09	1.53	80.6%	83.3%	80.0%	47.2%	52.8%	83.3%	40.0%
Registrar	14	17	1.23	41.2%	58.8%	1.08	1.36	23.5%	23.5%	10.0%	88.2%	11.8%	100.0%	80.0%
Senior Registrar	3	4	1.30	25.0%	75.0%	12.50	1.00	25.0%	25.0%	33.3%	75.0%	25.0%	0.0%	100.0%
Specialist Registrar	5	8	1.50	37.5%	62.5%	1.34	1.62	0.0%	0.0%	0.0%	75.0%	25.0%	66.7%	80.0%
Registrars	22	29	1.31	37.9%	62.1%	1.25	1.34	17.2%	27.3%	11.1%	82.8%	17.2%	81.8%	83.3%
SHO/ Interns	22	33	1.53	27.3%	72.7%	1.25	1.68	6.1%	22.2%	0.0%	100.0%	0.0%	100.0%	100.0%
Medical/ Dental, other	98	182	1.86	62.1%	37.9%	1.99	1.67	58.2%	58.4%	58.0%	35.2%	64.8%	30.1%	43.5%
Medical & Dental	167	280	1.68	49.6%	50.4%	1.78	1.59	50.7%	54.7%	46.8%	49.3%	50.7%	41.0%	57.4%
Clinical Nurse/ Midwife Manager	1,389	1,489	1.07	10.7%	89.3%	1.02	1.08	94.2%	94.2%	94.4%	81.3%	18.7%	96.3%	79.5%
Director Nursing/Midwifery, Assistant	149	156	1.05	7.1%	92.9%	1.00	1.05	99.4%	99.4%	99.3%	92.9%	7.1%	100.0%	92.4%
Director of Nursing/Midwifery	142	146	1.03	6.2%	93.8%	1.02	1.03	97.3%	97.3%	97.1%	96.6%	3.4%	100.0%	96.4%
Nurse/ Midwife Manager	1,680	1,791	1.07	10.1%	89.9%	1.02	1.07	94.9%	92.8%	95.1%	83.5%	16.5%	96.7%	82.1%
Advanced Nurse/ Midwife Practitioner	27	28	1.02	17.9%	82.1%	1.00	1.03	100.0%	100.0%	100.0%	100.0%	0.0%	100.0%	100.0%
Clinical Nurse/ Midwife Specialist	79	89	1.13	9.0%	91.0%	1.05	1.14	97.8%	97.8%	97.5%	61.8%	38.2%	100.0%	58.0%
Nurse/ Midwife Specialist & AN/MP	106	117	1.10	11.1%	88.9%	1.03	1.11	98.3%	100.0%	98.1%	70.9%	29.1%	100.0%	67.3%
Staff Midwives	1	1	1.23		100.0%		1.23	100.0%	100.0%	100.0%	0.0%	100.0%		0.0%
Staff Nurse [Intellectual Disability]	1,728	1,979	1.15	8.3%	91.7%	1.08	1.15	95.5%	95.5%	95.5%	65.6%	34.4%	81.7%	64.2%
Staff Nurse [Psychiatric]	213	249	1.17	11.6%	88.4%	1.10	1.18	88.8%	88.8%	89.1%	63.9%	36.1%	79.3%	61.8%
Staff Nurses [General/ Children's]	3,313	3,887	1.17	8.9%	91.1%	1.04	1.19	88.1%	88.1%	88.2%	63.6%	36.4%	91.3%	60.9%
Staff Nurse/ Staff Midwife	5,254	6,116	1.16	8.8%	91.2%	1.05	1.18	90.5%	89.4%	90.6%	64.3%	35.7%	87.7%	62.0%
Public Health Nurse	22	27	1.21	3.7%	96.3%	1.00	1.22	100.0%	100.0%	100.0%	66.7%	33.3%	100.0%	65.4%
Nursing/ Midwifery Student	83	165	1.99	5.5%	94.5%	2.05	1.99	22.4%	0.0%	23.7%	67.3%	32.7%	88.9%	66.0%
Nursing Education/Clinical	25	29	1.14	3.4%	96.6%	1.00	1.14	96.6%	96.6%	96.4%	79.3%	20.7%	100.0%	78.6%
Other Nursing/ Midwifery	2	2	1.00	50.0%	50.0%	1.00	1.00	100.0%	100.0%	100.0%	100.0%	0.0%	100.0%	100.0%

Nursing/ Midwifery other	27	31	1.13	6.5%	93.5%	1.00	1.14	96.8%	100.0%	96.6%	80.6%	19.4%	100.0%	79.3%
Nursing & Midwifery	7,173	8,247	1.15	9.0%	91.0%	1.05	1.16	90.3%	89.4%	90.4%	68.7%	31.3%	90.2%	66.6%
Dietitians	43	54	1.25	3.7%	96.3%	1.01	1.26	94.4%	94.4%	96.2%	61.1%	38.9%	100.0%	59.6%
Occupational Therapists	416	469	1.13	7.0%	93.0%	1.06	1.13	88.9%	88.9%	88.3%	79.7%	20.3%	90.9%	78.9%
Physiotherapists	341	399	1.17	16.3%	83.7%	1.05	1.20	89.7%	89.7%	89.2%	69.9%	30.1%	87.7%	66.5%
Podiatrists & Chiropodists	13	17	1.28	23.5%	76.5%	1.11	1.34	70.6%	70.6%	61.5%	70.6%	29.4%	100.0%	61.5%
Speech & Language Therapists	330	385	1.17	1.6%	98.4%	1.01	1.17	92.2%	92.2%	92.3%	74.0%	26.0%	100.0%	73.6%
Therapy Professions	1,144	1,324	1.16	8.3%	91.7%	1.05	1.17	90.1%	92.7%	89.9%	74.2%	25.8%	90.0%	72.8%
Clinical Engineering	15	15	1.01	93.3%	6.7%	1.01	1.00	86.7%	86.7%	100.0%	93.3%	6.7%	92.9%	100.0%
Clinical Measurement	2	2	1.00	100.0%		1.00		100.0%	100.0%		100.0%	0.0%	100.0%	
Medical Science	4	4	1.00	75.0%	25.0%	1.00	1.00	75.0%	75.0%	100.0%	100.0%	0.0%	100.0%	100.0%
Radiographers	5	9	1.83	11.1%	88.9%	2.00	1.81	88.9%	88.9%	87.5%	11.1%	88.9%	0.0%	12.5%
Health Science/ Diagnostics	26	30	1.16	66.7%	33.3%	1.03	1.56	86.7%	85.0%	90.0%	70.0%	30.0%	90.0%	30.0%
Social Care	2,899	3,409	1.18	16.9%	83.1%	1.11	1.19	89.4%	90.1%	89.2%	49.6%	50.4%	64.2%	46.6%
Social Workers	327	380	1.16	16.6%	83.4%	1.07	1.18	92.9%	88.9%	93.7%	73.9%	26.1%	82.5%	72.2%
Psychologists	233	266	1.14	19.9%	80.1%	1.08	1.16	93.2%	94.3%	93.0%	72.9%	27.1%	81.1%	70.9%
Pharmacy	27	37	1.38	13.5%	86.5%	1.36	1.38	78.4%	100.0%	75.0%	56.8%	43.2%	60.0%	56.3%
Counsellor Therapists	23	27	1.20	7.4%	92.6%	1.00	1.21	96.3%	96.3%	96.0%	59.3%	40.7%	100.0%	56.0%
Other Health & Social Care	37	51	1.36	15.7%	84.3%	1.06	1.44	88.2%	88.2%	88.4%	43.1%	56.9%	75.0%	37.2%
Play Therapists/ Specialists	12	16	1.36	25.0%	75.0%	1.00	1.54	93.8%	93.8%	91.7%	56.3%	43.8%	100.0%	41.7%
H&SC, Other	72	94	1.31	14.9%	85.1%	1.03	1.37	91.5%	92.9%	91.3%	50.0%	50.0%	85.7%	43.8%
Health & Social Care	4,727	5,540	1.17	15.2%	84.8%	1.10	1.19	89.9%	90.6%	89.8%	58.4%	41.6%	71.0%	56.2%
Executive Management	54	54	1.00	37.0%	63.0%	1.00	1.01	96.3%	96.3%	100.0%	100.0%	0.0%	100.0%	100.0%
Senior Management (VIII & GM)	245	251	1.02	31.9%	68.1%	1.02	1.03	94.0%	94.0%	95.9%	96.4%	3.6%	97.5%	95.9%
Management (VIII & above)	299	305	1.02	32.8%	67.2%	1.02	1.02	94.4%	90.0%	96.6%	97.0%	3.0%	98.0%	96.6%
Middle Management (V-VII)	737	798	1.08	20.7%	79.3%	1.06	1.09	93.1%	93.1%	93.4%	79.2%	20.8%	86.7%	77.3%
Other Administrative	14	14	1.00	21.4%	78.6%	1.00	1.00	100.0%	100.0%	100.0%	100.0%	0.0%	100.0%	100.0%
Administrative/ Supervisory (V to VII)	751	812	1.08	20.7%	79.3%	1.05	1.09	93.2%	92.3%	93.5%	79.6%	20.4%	86.9%	77.6%
Clerical (III & IV)	1,287	1,552	1.21	9.9%	90.1%	1.11	1.22	86.0%	74.0%	87.3%	59.5%	40.5%	77.3%	57.6%
Management & Administrative	2,336	2,669	1.14	15.8%	84.2%	1.07	1.16	89.1%	85.1%	89.9%	69.9%	30.1%	86.0%	66.9%
Catering	297	336	1.13	31.8%	68.2%	1.05	1.18	95.2%	95.2%	96.9%	67.9%	32.1%	89.7%	57.6%
Household Services	864	1,106	1.28	16.5%	83.5%	1.24	1.29	86.3%	86.3%	87.8%	46.8%	53.2%	69.9%	42.3%
Other Labs & Associated	1	2	1.92	50.0%	50.0%	25.00	1.00	50.0%	50.0%	100.0%	50.0%	50.0%	0.0%	100.0%
Other Support	171	260	1.52	52.7%	47.3%	1.30	1.87	91.2%	91.2%	97.6%	32.3%	67.7%	51.1%	11.4%
Portering	93	104	1.12	98.1%	1.9%	1.12	1.30	87.5%	87.5%	100.0%	79.8%	20.2%	80.4%	50.0%

Support	1,426	1,808	1.27	29.3%	70.7%	1.19	1.30	88.7%	84.5%	90.4%	50.6%	49.4%	70.9%	42.1%
Maintenance	205	222	1.08	95.0%	5.0%	1.08	1.26	93.2%	93.2%	100.0%	83.3%	16.7%	85.8%	36.4%
Technical Services	18	18	1.00	83.3%	16.7%	1.00	1.00	94.4%	94.4%	100.0%	94.4%	5.6%	93.3%	100.0%
Maintenance/ Technical	223	240	1.08	94.2%	5.8%	1.07	1.19	93.3%	92.9%	100.0%	84.2%	15.8%	86.3%	50.0%
General Support	1,649	2,048	1.24	36.9%	63.1%	1.15	1.30	89.2%	87.0%	90.5%	54.5%	45.5%	75.5%	42.2%
HCA (Student Nurse/Midwife COVID-19)	5	9	1.81	22.2%	77.8%	3.64	1.59	0.0%	0.0%	0.0%	22.2%	77.8%	50.0%	14.3%
HCA, Nurse's Aide, etc.	11,341	13,118	1.16	22.1%	77.9%	1.09	1.18	84.9%	84.9%	85.0%	55.5%	44.5%	69.8%	51.5%
Health & Social Care Assistants	47	54	1.15	22.2%	77.8%	1.14	1.16	83.3%	83.3%	83.3%	74.1%	25.9%	91.7%	69.0%
Health Care Assistants	11,393	13,181	1.16	22.1%	77.9%	1.09	1.18	84.9%	84.8%	84.9%	55.6%	44.4%	69.8%	51.5%
Home Help	3,453	5,138	1.49	3.8%	96.2%	1.49	1.49	71.3%	37.4%	72.6%	40.4%	59.6%	51.3%	40.0%
Care, other	1,882	2,233	1.19	26.0%	74.0%	1.19	1.18	87.3%	82.1%	89.2%	62.8%	37.2%	68.7%	60.7%
Patient & Client Care	16,728	20,552	1.23	17.9%	82.1%	1.12	1.25	81.7%	81.9%	81.7%	52.6%	47.4%	68.7%	49.0%

Employment by WTE, Headcount, Gender, Full-Time /Part-Time etc.: Jul 2021

Social Care Services CHO	WTE	Headcount	WTE: no.	% Male	% female	Male WTE: no.	Female WTE: no.	% Total Perm	% Male Perm	% Female Perm	% Total Full Time	% Total Part Time	% Male FT	% Female FT
Overall	32,780	39,336	1.20	16.7%	83.3%	1.12	1.22	85.3%	84.1%	85.6%	58.0%	42.0%	72.7%	55.1%
CHO 1	3,448	4,035	1.17	15.6%	84.4%	1.11	1.18	80.1%	80.1%	78.8%	57.7%	42.3%	78.9%	53.8%
CHO 2	3,114	3,775	1.21	18.4%	81.6%	1.17	1.22	85.7%	85.7%	86.4%	46.2%	53.8%	61.7%	42.7%
CHO 3	3,097	3,761	1.21	12.3%	87.7%	1.10	1.23	86.4%	86.4%	86.9%	45.2%	54.8%	60.6%	43.1%
CHO 4	5,508	6,931	1.26	15.4%	84.6%	1.15	1.28	73.5%	73.5%	74.6%	70.5%	29.5%	77.5%	69.2%
CHO 5	3,280	3,898	1.19	14.3%	85.7%	1.11	1.20	90.8%	90.8%	91.6%	49.9%	50.1%	68.2%	46.9%
CHO 6	2,026	2,299	1.13	23.7%	76.3%	1.11	1.14	92.3%	92.3%	92.4%	70.6%	29.4%	82.4%	66.9%
CHO 7	4,234	4,962	1.17	21.2%	78.8%	1.10	1.19	88.9%	88.9%	89.2%	67.5%	32.5%	80.1%	64.1%
CHO 8	3,738	4,601	1.23	16.9%	83.1%	1.14	1.25	90.7%	90.7%	90.8%	47.9%	52.1%	60.1%	45.4%
CHO 9	4,254	4,987	1.17	15.7%	84.3%	1.08	1.19	89.1%	89.1%	89.2%	59.6%	40.4%	76.7%	56.4%
other Community Services	81	87	1.08	25.3%	74.7%	1.05	1.09	86.2%	86.2%	87.7%	86.2%	13.8%	90.9%	84.6%

Summary Staff Movement: July 2021

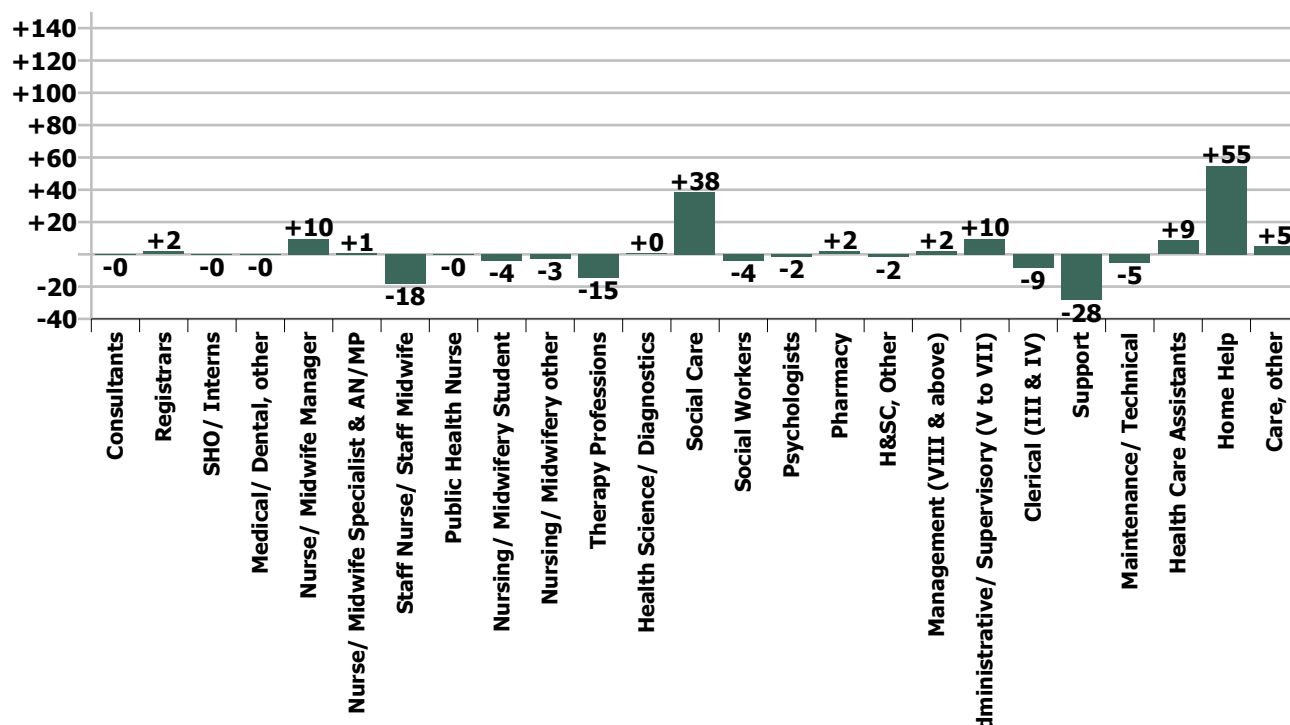
Month-on-month
Summary

WTE change since Jun 21	% change since Jun 21	overall	Consultants	Registrars	SHO/ Interns	Medical/ Dental, other	Medical & Dental	Nurse/ Midwife Manager	Nurse/ Midwife Specialist & AN/MP	Staff Nurse/ Staff Midwife	Public Health Nurse	Nursing/ Midwifery Student	Nursing/ Midwifery other	Nursing & Midwifery	Therapy Professions	Health Science/ Diagnostics	Social Care	Social Workers	Psychologists	Pharmacy	H&SC, Other	Health & Social Care Professionals	Management (VIII & above)	Administrative & Supervisory (V to VII)	Clerical (III & IV)	Management & Administrative	Support	Maintenance/ Technical	General Support	Health Care Assistants	Home Help	Care, other	Patient & Client Care	
Overall	+0.1%	+42	-0.4	+1.8	-0.2	-0.2	+1.0	+9.6	+0.7	-18.2	-0.2	-4.0	-2.7	-14.7	-14.6	+0.5	+38.4	-4.0	-1.5	+1.7	-1.9	+18.5	+2.0	+9.6	-8.6	+3.0	-28.4	-5.3	-33.7	+8.6	+54.7	+5.1	+68.3	
CHO 1	-1.8%	-65					+0.0	-0.5	+0.6	-9.7		-3.3	-1.9	-14.7	-1.1	-0.0	-0.8	-1.5	+0.4		-0.3	-3.3	-0.3	+2.6	-5.7	-3.3	-13.7	-1.9	-15.6	-38.4	+7.1	+3.8	-27.6	
Disabilities	+0.3%	+5	-0.5				-0.5	-1.0	-0.4	-1.6				-3.0	-1.5		+4.2	-1.1	+0.1		-2.2	-0.5	-0.8	+1.9	-0.8	+0.3	-1.7		-1.7	+14.0		-3.5	+10.6	
Older People	+1.5%	+23						+0.8	-0.0	-2.9				-2.1	-3.1			-0.0		-0.1		-2.2	-3.1		+1.8	-3.4	-1.6	-1.9	-1.0	-2.9	+3.1	+26.7	+3.1	+32.9
CHO 2	+0.9%	+28	-0.5				-0.5	-0.2	-0.4	-4.4				-5.1	-4.5		+4.2	-1.1	+0.1	-0.1	-2.2	-3.6	-0.8	+3.7	-4.2	-1.3	-3.6	-1.0	-4.6	+17.2	+26.7	-0.3	+43.5	
Disabilities	+0.8%	+16	-1.0				-1.0			-1.7		+0.3		-1.4	+1.6	+1.0	+6.1	+1.2	+0.1		+0.1	+10.1		-1.1	-0.1	-1.2	+0.8		+0.8	+9.6		-0.7	+8.9	
Older People	+2.9%	+32						+0.1	-0.0	+3.9				+4.0	-0.1			-0.0				-0.1	+0.0	+1.7	+1.1	+2.9	-2.2	-0.6	-2.9	-0.9	+29.9	-0.8	+28.1	
CHO 3	+1.6%	+48	-1.0				-1.0	+0.1	-0.0	+2.2		+0.3		+2.6	+1.5	+1.0	+6.1	+1.2	+0.1		+0.1	+10.0	+0.0	+0.6	+1.0	+1.7	-1.4	-0.6	-2.1	+8.7	+29.9	-1.5	+37.0	
Disabilities	-0.2%	-4					+0.2	+0.0		-4.2				-4.0	+0.2		-1.8	-1.7	-0.3		-1.0	-4.6	-0.8	+1.1	-0.1	+0.3	+0.3	+0.0	+0.3	+5.5		-1.6	+3.9	
Older People	-0.6%	-19		-1.1		-0.2	-1.3	+1.7		+0.4				+2.0	-3.4			-0.4		+0.4		-3.5		-0.0	-0.7	-0.7	-3.0	+0.0	-3.0	+1.1	-13.7	+0.5	-12.1	
CHO 4	-0.4%	-23		-1.1		-0.2	-1.3	+1.8	+0.0	-3.8	+0.0			-2.0	-3.2		-1.8	-2.1	-0.3	+0.4	-1.0	-8.1	-0.8	+1.1	-0.8	-0.5	-2.7	+0.0	-2.7	+6.6	-13.7	-1.1	-8.2	
Disabilities	-0.2%	-3	+0.2				+0.2	+0.3		+0.1	+0.1	-0.2	+0.0	+0.3	-4.3		-0.0	-0.5	+0.6		+0.2	-4.0	+0.0	+1.8	-2.9	-1.0	-1.3	+0.3	-1.0	+4.9	+0.9	-3.0	+2.8	
Older People	+0.2%	+4						+2.8	+0.0	-1.1		-1.0		+0.8	+0.9			-0.2		-0.3		+0.5	+0.0		-0.8	-0.3	-1.1	-0.3	-0.0	-0.4	-1.0	+5.0	+0.0	+4.0
CHO 5	+0.0%	+1	+0.2				+0.2	+3.1	+0.0	-0.9	+0.0	-1.2	+0.0	+1.1	-3.5		-0.0	-0.6	+0.6	-0.3	+0.2	-3.5	+0.0	+1.0	-3.2	-2.1	-1.6	+0.2	-1.4	+3.9	+5.9	-3.0	+6.8	
Disabilities	+0.1%	+1		-0.4	+1.0		+0.6	-0.4		-1.8				-2.2	+1.5		+1.9	+1.0	+0.4		+0.1	+5.0	+0.1	-2.1	+0.8	-1.1	+1.5		+1.5	-4.5		+1.4	-3.1	
Older People	-1.1%	-9				+0.0		+3.4		-3.6				-0.1	+0.1			+0.4	-1.6	+0.9		-0.2	+0.9	-0.0	-0.5	+0.4	-1.3	-0.9	-2.2	-6.4		-0.1	-6.5	
CHO 6	-0.4%	-8		-0.4	+1.0		+0.6	+3.0		-5.3				-2.3	+1.6		+1.9	+1.4	-1.2	+0.9	+0.1	+4.8	+1.0	-2.1	+0.4	-0.7	+0.2	-0.9	-0.7	-10.9		+1.4	-9.6	
Disabilities	+1.2%	+38		+0.6	-0.6		-0.0			+3.8				+7.0	+3.0	-0.9	+15.6	-0.0	+1.2	+0.5	+1.0	+20.3	+0.0	+2.5	-2.9	-0.3	-4.0	-0.8	-4.8	+12.5	-0.1	+3.7	+16.0	
Older People	-0.2%	-2						+0.1	-0.0	+2.6		+0.6		+3.3	-0.8			+0.9				+0.1		+0.6	-2.0	-1.5	-0.1	-0.1	-3.7	-1.5	+1.0	-4.2		
CHO 7	+0.9%	+36		+0.6	-0.6		-0.0	+3.3	-0.0	+6.4		+0.6		+10.3	+2.2	-0.9	+15.6	+0.9	+1.2	+0.5	+1.0	+20.4	+0.0	+3.1	-4.9	-1.8	-4.1	-0.8	-4.9	+8.8	-1.7	+4.7	+11.8	
Disabilities	+1.1%	+25						-1.0	-0.0	+0.1		-0.4	+0.2	-1.2	-2.6	+0.4	+3.5	-0.5	-0.4		+0.1	+0.5	+0.3	+0.3	+7.9	+8.2	+0.0	+0.0	+17.0	+0.1	+0.3	+17.4		
Older People	-0.2%	-3				-0.0	-0.0	-0.2	+0.5	-0.2	-0.3			-0.2	+0.2			+0.2		+0.3		+0.7	+0.6	-3.4	+0.4	-2.4	-0.0	-0.1	-0.2	-4.1	+0.5	+2.5	-1.1	
CHO 8	+0.6%	+22				-0.0	-0.0	-1.2	+0.4	-0.1	-0.3	-0.4	+0.2	-1.3	-2.3	+0.4	+3.5	-0.3	-0.4	+0.3	+0.1	+1.1	+0.6	-3.1	+8.3	+5.8	+0.0	-0.1	-0.1	+12.9	+0.5	+2.8	+16.3	
Disabilities	-0.3%	-10	+0.9	+1.0			+1.9	-1.3	+0.0	-5.6		-1.0		-7.8	-3.8		+9.6	-1.4	-1.9		+0.0	+2.5	+0.3	+0.9	+3.0	+4.2	-1.5	-0.1	-1.6	-7.8		-1.6	-9.4	
Older People	+1.5%	+14		+1.7	-0.5		+1.2	+1.5		+3.1				+4.6	-1.4			-0.3				-1.7	+0.9	+2.1	-0.5	+2.4	-0.1	-0.1	+7.7		+0.0	+7.7		
CHO 9	+0.1%	+4	+0.9	+2.7	-0.5		+3.1	+0.3	+0.0	-2.6			-1.0	-3.2	-5.2		+9.6	-1.7	-1.9		+0.0	+0.8	+1.1	+3.0	+2.5	+6.6	-1.6	-0.1	-1.7	-0.1		-1.6	-1.7	
Disabilities	+1.9%	+0																							+0.1	+0.1								
Older People	-1.8%	-1																							-0.3	-2.0	-1.3							
other Community Services	-1.5%	-1																						+0.9	-0.3	-1.8	-1.2							
		+0.1%	-1.6%	+9.0%	-0.8%	-0.2%	+0.6%	+0.6%	+0.7%	-0.3%	-1.0%	-4.6%	-8.8%	-0.2%	-1.3%	+1.9%	+1.3%	-1.2%	-0.7%	+6.6%	-2.6%	+0.4%	+0.7%	+1.3%	-0.7%	+0.1%	-2.0%	-2.3%	-2.0%	+0.1%	+1.6%	+0.3%	+0.4%	

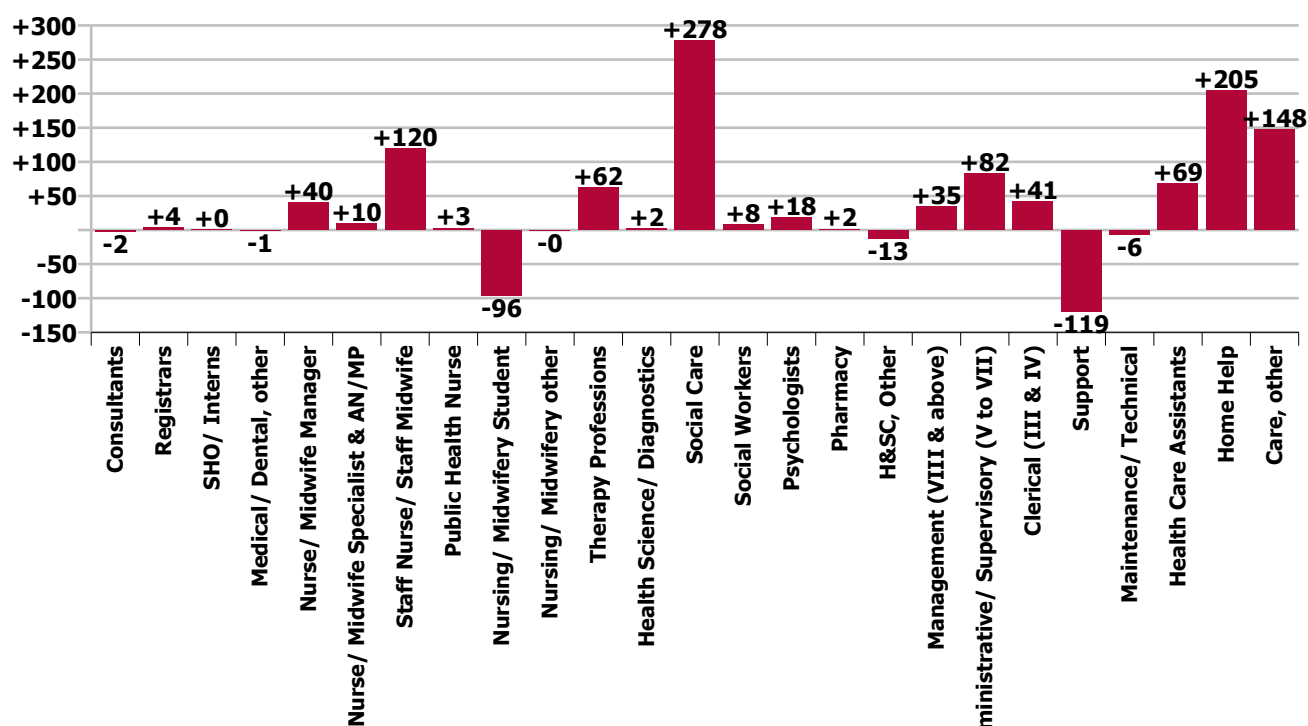
Year-on-year Summary

WTE change since Jul 20	% change since Jul 20	overall	Consultants	Registrars	SHO/ Interns	Medical/ Dental, other	Medical & Dental	Nurse/ Midwife Manager	Nurse/ Midwife Specialist & AN/MP	Staff Nurse/ Staff Midwife	Public Health Nurse	Nursing/ Midwifery Student	Nursing/ Midwifery other	Nursing & Midwifery	Therapy Professions	Health Science/ Diagnostics	Social Care	Social Workers	Psychologists	Pharmacy	H&SC, Other	Health & Social Care Professionals	Management (VIII & above)	Administrative Supervisory (V to VII)	Clerical (III & IV)	Management & Administrative	Support	Maintenance/ Technical	General Support	Health Care Assistants	Home Help	Care, other	Patient & Client Care	
Overall	+2.8%	+888	-2	+4	+0	-1	+1	+40	+10	+120	+3	-96	-0	+76	+62	+2	+278	+8	+18	+2	-13	+357	+35	+82	+41	+158	-119	-6	-125	+69	+205	+148	+421	
Disabilities	+0.2%	+4				-0	-0	+2	-0	+22	+1	-18	-3	+4	-3		+2	-2	+8		-2	+2	+1	+7	-0	+8	-16	-2	-18	-1	-0	+10	+9	
Older People	+1.2%	+23				-3	-3	-2	+2	+16				+16	+5	+0		-2				+3		+2	+0	+2	-3		-3	-71	+81	-2	+8	
CHO 1	+0.8%	+27				-3	-3	-1	+2	+38	+1	-18	-3	+19	+2	+0	+2	-4	+8		-2	+6	+1	+9	-0	+10	-19	-2	-21	-72	+81	+8	+17	
Disabilities	+5.2%	+76	-1	-0			+1	+3	+1	-3		-1		-0	-1		+25	+1	+1		-3	+22	+1	+8	-1	+8	+7	-0	+7	+39		+2	+41	
Older People	-2.4%	-39				+0	+0	+5	-0	+7				+12	-1			+0		-0		-0	+1	+1	-7	-5	+1	-2	-1	-57	-2	+14	-45	
CHO 2	+1.2%	+37	-1	-0		+0	-0	+8	+1	+4		-1		+12	-2		+25	+1	+1		-3	+21	+2	+9	-9	+3	+8	-2	+6	-18	-2	+17	-4	
Disabilities	+4.0%	+77	-2				-2	-3	-2	+1		-15		-20	+1	+2	+25	+5	-3		-2	+28	+1	+0	-2	-1	+0	+1	+1	+56		+14	+70	
Older People	+6.9%	+73						+0	+3	+30				+33	+8	-0		-1				+6	+0	-1	+8	+8	-2	-0	-2	-5	+32	+1	+28	
CHO 3	+5.1%	+150	-2				-2	-3	+1	+31		-15		+13	+9	+2	+25	+4	-3		-2	+35	+1	-0	+6	+7	-2	+1	-1	+51	+32	+15	+98	
Disabilities	+4.8%	+120	+1				+1	-5	-1	+1		-15	-1	-21	+13		+15	-0	+2		-2	+27	-1	+2	+3	+4	+3	+2	+5	+68		+36	+104	
Older People	+0.9%	+25		-1	+1	-1	-1	+1	-0	+5	+1			+7	+2			+3		+1		+6	+3	+2	+1	+6	-8	+1	-7	-45	+55	+5	+14	
CHO 4	+2.7%	+145	+1	-1	+1	-1	+0	-4	-1	+7	+1	-15	-1	-14	+16		+15	+2	+2	+1	-2	+32	+2	+3	+4	+10	-5	+3	-2	+23	+55	+41	+119	
Disabilities	+7.7%	+116	+1				+1	+4		+5	+3	-3	+1	+11	+13		-2	+3	+9		-2	+22	+4	+12	+4	+19	-5		-5	+58	-9	+19	+68	
Older People	-1.6%	-28				+6	+6	+5	+2	-2	-2			+2	-8			-0		-1		-9	+0	+9	+2	+11	-36	-4	-40	-58	+62	-3	+1	
CHO 5	+2.8%	+89	+1				+6	+9	+2	+4	+1	-3	+1	+13	+5		-2	+3	+9	-1	-2	+13	+4	+21	+6	+31	-40	-4	-44	-1	+54	+17	+70	
Disabilities	+5.0%	+58		+0	+1		+1	+2		+2				+4	+4		+54	+1	-1		+0	+58	-1	+2	-11	-10	-22	-1	-23	+11		+17	+28	
Older People	-5.4%	-45		+1		-2	-1	-4		-9				-12	+5			-2	-2	+1		+3	+2	+2	-1	+3	-1	-1	-2	-34		-1	-35	
CHO 6	+0.6%	+13		+1	+1	-2	+0	-2		-7				-9	+9		+54	-0	-3	+1	+0	+61	+1	+3	-11	-7	-23	-2	-25	-23		+16	-7	
Disabilities	+6.9%	+208	-0	+1	-0		+0	+10	+1	+14		-8	+2	+20	-0	-1	+47	-1	+2		-1	+48	+8	+11	+8	+28	-14	+3	-11	+105	-2	+20	+123	
Older People	-1.6%	-17				-2	-2	+18	-2	+1		-1		+16	+4			-1		-1		+1	+1	+2	+1	+4	+7		+7	-37	-7	+1	-43	
CHO 7	+4.7%	+191	-0	+1	-0	-2	-2	+27	-1	+16		-9	+2	+36	+4	-1	+47	-2	+2	+1		+9	+9	+13	+9	+31	-7	+3	-3	+68	-9	+22	+80	
Disabilities	+5.2%	+112	-1	-1			-2	+2	-1	+7		-23	-0	-15	-2	-0	+15	+1	+5		-2	+20	+3	-6	+13	+10	-2	-2	-4	+98	-2	+7	+103	
Older People	-2.4%	-37				-0	-0	+3	+4	+10	+0		+2	+19	+8			+2		+2		+12	-1	-0	-3	-4	-3	-0	-4	-60	-2	+3	-60	
CHO 8	+2.1%	+75	-1	-1		-0	-2	+5	+4	+17	+0	-23	+2	+4	+7	-0	+15	+3	+5	+2	+0	+32	+2	-7	+11	+6	-5	-2	-7	+38	-5	+10	+43	
Disabilities	+4.4%	+140	-0	+2	-2		-1	-0	+4	+12		-12	-1	+3	+0	+1	+96	-2	-2		-3	+90	+10	+25	+8	+44	-22	-1	-23	+25		+2	+27	
Older People	+1.3%	+13	-0	+3	+0		+3	+2	-0	-1		-1	-0	+13	+0	+1		+5		+0	+18	+2	+6	+10	+17	-3	-23		-3	-23		+1	+22	
CHO 9	+3.7%	+152	-1	+4	-2		+2	+2	+3	+11		-12	-2	+2	+14	+1	+96	+2	-2		-3	+108	+12	+31	+18	+61	-25	-1	-26	+2		+3	+5	
Disabilities	+20.4%	+1																				+0	+1	-0	+1								+1	
Older People	+11.7%	+8																					+1	-1	+7	+7							+1	+1
other Community Services	+12.3%	+9																					+1	-0	+7	+8							+1	+1
		+2.8%	-6.9%	+22.1%	+1.3%	-1.5%	+0.6%	+2.5%	+10.6%	+2.3%	+14.0%	-53.8%	-1.6%	+1.1%	+5.8%	+7.4%	+10.6%	+2.5%	+8.6%	+6.1%	-15.3%	+8.2%	+13.2%	+12.3%	+3.3%	+7.3%	-7.7%	-2.7%	-7.1%	+0.6%	+6.3%	+8.5%	+2.6%	

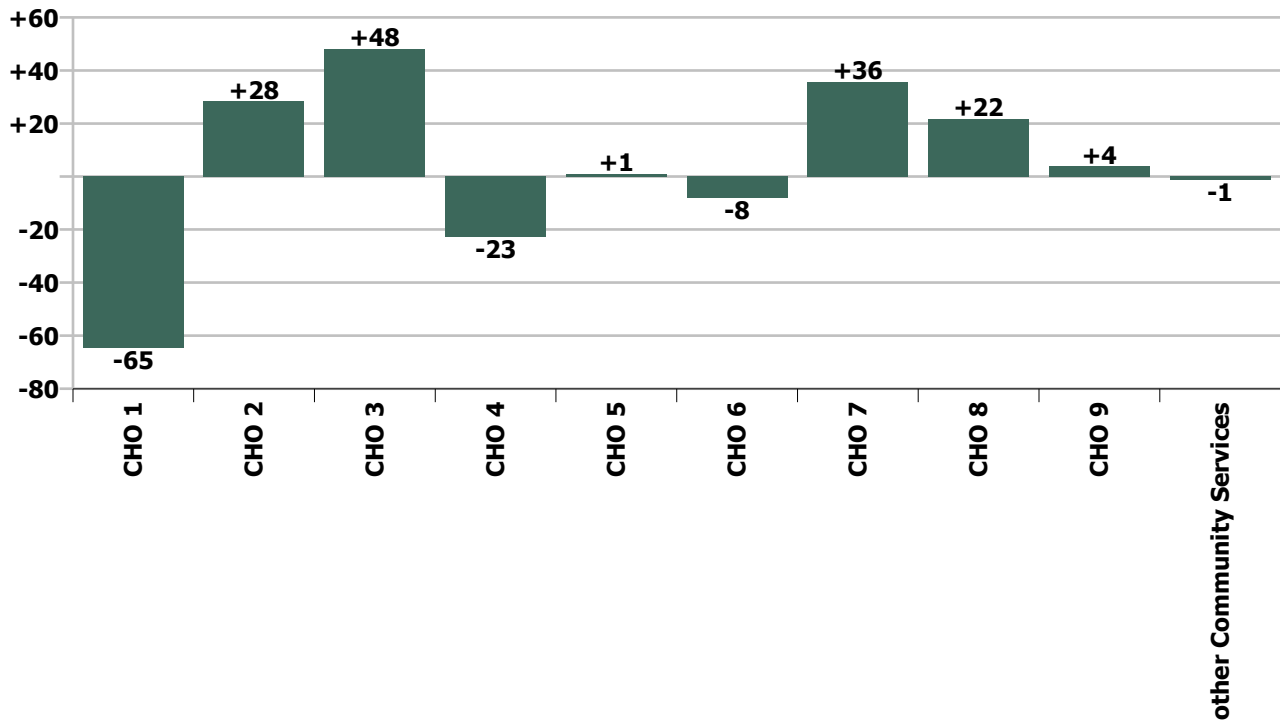
Staff Group change since: Jun 2021



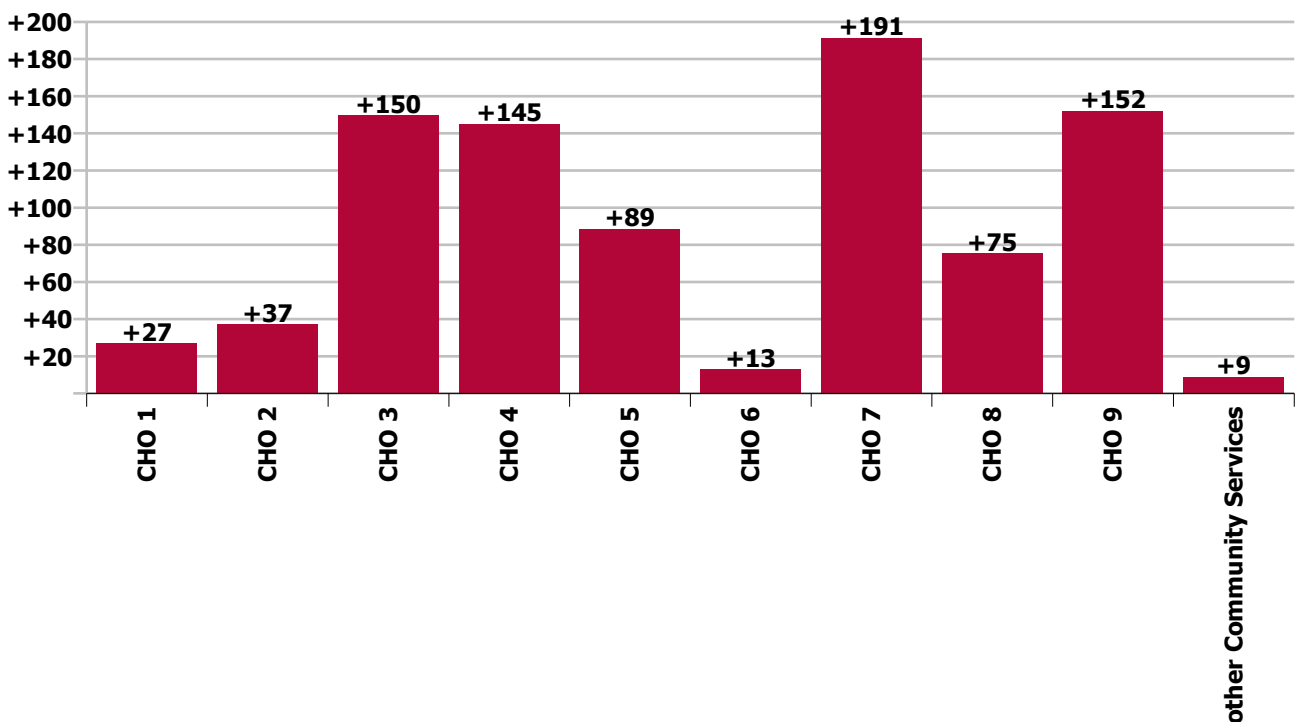
Staff Group change since: Jul 2020



CHO change since: Jun 2021



CHO change since: Jul 2020



Longitudinal Employment Levels by Grade Group - Dec 2016 to Jul 2021

Jul 2021 (Dec 2015 figure: 28,322)	WTE Jul 2021	WTE change since Dec 16	WTE change since Dec 17	WTE change since Dec 18	WTE change since Dec 19	WTE change since Dec 20	WTE change since Apr 21	% change since Dec 16	% change since Dec 17	% change since Dec 18	% change since Dec 19	% change since Dec 20	% change since Apr 21
Overall	32,780	+3,543	+2,279	+1,655	+1,244	+420	+270	+12.1%	+7.5%	+5.3%	+3.9%	+1.3%	+0.8%
Consultant Medicine	4	-7	-5	+1	+1	-0	-0	-59.9%	-52.2%	+22.2%	+22.2%	-0.5%	-4.3%
Consultant Paediatrics	2	-1	-1	-1	-1	-1	-1	-37.7%	-36.3%	-34.4%	-34.4%	-34.4%	-34.4%
Consultant Psychiatry	19	-3	-5	+1	-2	-3	+0	-15.1%	-21.2%	+4.3%	-10.4%	-12.5%	+0.9%
Consultant Surgery		-1	-0	-0				-100.0%	-100.0%	-100.0%	-100.0%	-100.0%	-100.0%
Consultants	25	-12	-11	+0	-2	-4	-1	-32.2%	-30.6%	+1.6%	-8.8%	-13.0%	-4.2%
Registrar	14	+2	+0	+1	+0	+5	+2	+20.1%	+2.3%	+9.0%	+2.3%	+56.3%	+19.3%
Senior Registrar	3	+0	-1	-1	+0	-1	-0	+2.7%	-23.0%	-23.0%	+2.7%	-23.0%	-1.6%
Specialist Registrar	5	+1	+0	+3	-1	+1	-0	+33.0%	+6.4%	+166.0%	-11.3%	+33.0%	-6.5%
Registrars	22	+4	-0	+4	-0	+5	+2	+20.0%	-1.3%	+19.0%	-1.3%	+31.9%	+8.9%
SHO/ Interns	22	+6	+5	+3	-0	-1	+2	+35.0%	+27.3%	+14.0%	-2.0%	-5.0%	+8.2%
Dentists								-100.0%	-100.0%	-100.0%	-100.0%	-100.0%	-100.0%
Other Medical	98	-3	-2	-2	-13	-20	-3	-2.8%	-2.2%	-1.6%	-11.6%	-17.0%	-2.8%
Medical/ Dental, other	98	-3	-2	-2	-13	-20	-3	-2.8%	-2.2%	-1.6%	-11.6%	-17.0%	-2.8%
Medical & Dental	167	-5	-9	+5	-16	-20	-0	-3.2%	-5.1%	+3.1%	-8.7%	-10.5%	-0.3%
Clinical Nurse/ Midwife Manager	1,389	+43	+52	+56	+70	+39	+20	+3.2%	+3.9%	+4.2%	+5.3%	+2.9%	+1.4%
Director Nursing/Midwifery, Assistant	149	+19	+20	+24	+5	-3	-2	+14.4%	+15.4%	+19.2%	+3.6%	-2.1%	-1.4%
Director of Nursing/Midwifery	142	+13	+14	+22	+2	+1	-1	+10.5%	+11.0%	+17.8%	+1.2%	+0.6%	-1.0%
Nurse/ Midwife Manager	1,680	+75	+86	+102	+77	+36	+16	+4.7%	+5.4%	+6.5%	+4.8%	+2.2%	+1.0%
Advanced Nurse/ Midwife Practitioner	27	+23	+22	+18	+15	+3	+1	+585.2%	+448.2%	+205.2%	+115.5%	+11.3%	+4.3%
Clinical Nurse/ Midwife Specialist	79	-5	-1	-4	+3	+1	+1	-5.8%	-0.7%	-5.3%	+3.9%	+1.4%	+0.9%
Nurse/ Midwife Specialist & AN/MP	106	+19	+22	+14	+18	+4	+2	+21.2%	+26.0%	+15.3%	+20.0%	+3.8%	+1.8%
Graduate Nursing/ Midwifery								-100.0%	-100.0%	-100.0%	-100.0%	-100.0%	-100.0%
Staff Midwives	1	+0	-1	+1	+1	-0	-0	+102.5%	-55.0%	-100.0%	-100.0%	-8.0%	-10.0%
Staff Nurse [Intellectual Disability]	1,728	+2	+24	+42	+130	-62	-28	+0.1%	+1.4%	+2.5%	+8.2%	-3.5%	-1.6%
Staff Nurse [Psychiatric]	213	+123	+137	+137	+125	+155	+3	+136.1%	+180.7%	+179.0%	+141.2%	+268.9%	+1.6%
Staff Nurses [General/ Children's]	3,313	-203	-172	-160	-150	-56	+45	-5.8%	-4.9%	-4.6%	-4.3%	-1.7%	+1.4%
Staff Nurse/ Staff Midwife	5,254	-78	-12	+20	+106	+37	+21	-1.5%	-0.2%	+0.4%	+2.1%	+0.7%	+0.4%
Public Health Nurse	22	+2	+1	+2	+3	+2	-0	+7.4%	+6.8%	+9.9%	+13.2%	+9.5%	-1.4%
Pre-registration Nurse/ Midwife Intern	78	+66	+66	+43	+49	+75	-4	+546.8%	+558.4%	+122.9%	+174.8%	+3004.8%	-4.4%
Pre-registration Nurse Intern (COVID-19)	2	+2	+2	+2	+2	-30	+1	-100.0%	-100.0%	-100.0%	-100.0%	-94.5%	+386.1%
Post-registration Nurse/ Midwife Student					-1			-100.0%	-100.0%	-100.0%	-100.0%	-100.0%	-100.0%
Nursing/ Midwifery awaiting registration	3	+3	-11	+3	-11	-11	-11	-100.0%	-75.8%	-100.0%	-77.2%	-76.4%	-76.6%
Nursing/ Midwifery Student	83	+71	+57	+48	+39	+34	-13	+589.7%	+220.9%	+137.7%	+87.7%	+70.1%	-13.9%
Nursing Education/Clinical	25	+3	+3	+3	+3	-1	-2	+14.4%	+15.2%	+14.8%	+14.7%	-5.0%	-8.7%
Other Nursing/ Midwifery	2	-3	-3	+1	+1	+1		-60.0%	-60.0%	+100.0%	+100.0%	+100.0%	
Nursing/ Midwifery other	27	+0	+0	+4	+4	-0	-2	+0.7%	+1.3%	+18.5%	+18.4%	-1.2%	-8.1%

Jul 2021 (Dec 2015 figure: 28,322)	WTE Jul 2021	WTE change since Dec 16	WTE change since Dec 17	WTE change since Dec 18	WTE change since Dec 19	WTE change since Dec 20	WTE change since Apr 21	% change since Dec 16	% change since Dec 17	% change since Dec 18	% change since Dec 19	% change since Dec 20	% change since Apr 21
Overall	32,780	+3,543	+2,279	+1,655	+1,244	+420	+270	+12.1%	+7.5%	+5.3%	+3.9%	+1.3%	+0.8%
Nursing & Midwifery	7,173	+88	+154	+190	+246	+113	+23	+1.2%	+2.2%	+2.7%	+3.5%	+1.6%	+0.3%
Dietitians	43	+14	+14	+12	+9	+9	+2	+49.4%	+47.3%	+39.7%	+24.4%	+26.0%	+5.9%
Occupational Therapists	416	+69	+73	+71	+39	+25	+5	+20.0%	+21.3%	+20.7%	+10.3%	+6.3%	+1.3%
Physiotherapists	341	+40	+35	+33	+28	+16	+6	+13.4%	+11.5%	+10.6%	+9.0%	+4.9%	+1.7%
Podiatrists & Chiropodists	13	-1	-3	-2	+1	+1	-1	-10.0%	-17.6%	-11.0%	+10.5%	+5.2%	-5.6%
Speech & Language Therapists	330	+39	+24	+28	+14	+3	-2	+13.4%	+7.7%	+9.3%	+4.5%	+0.9%	-0.5%
Therapy Professions	1,144	+161	+143	+143	+91	+53	+11	+16.4%	+14.3%	+14.3%	+8.7%	+4.9%	+1.0%
Audiology		-13	-18					-100.0%	-100.0%	-100.0%	-100.0%	-100.0%	-100.0%
Clinical Engineering	15	-3	-3	+3	+2	+2	+1	-18.7%	-17.4%	+23.9%	+14.4%	+14.8%	+6.6%
Clinical Measurement	2	+1	+1	+1	+1	-0		+100.0%	+100.0%	+85.2%	+65.3%	-7.4%	
Medical Science	4		+1						+33.3%				
Phlebotomists		-1	-1	-1	-1			-100.0%	-100.0%	-100.0%	-100.0%	-100.0%	-100.0%
Radiographers	5	-3	-3	-2	-2	-1	-1	-39.2%	-40.0%	-25.6%	-28.9%	-17.4%	-15.4%
Health Science/ Diagnostics	26	-19	-23	+1	-0	+1	+0	-42.8%	-47.4%	+4.4%	-1.3%	+2.9%	+0.1%
Social Care	2,899	+705	+550	+407	+301	+107	+72	+32.1%	+23.4%	+16.4%	+11.6%	+3.8%	+2.6%
Social Workers	327	+25	+22	+13	+10	-1	-6	+8.1%	+7.4%	+4.0%	+3.0%	-0.4%	-1.7%
Psychologists	233	+23	+9	+26	+27	+3	-3	+10.7%	+4.1%	+12.5%	+12.9%	+1.1%	-1.5%
Pharmacy	27	+6	+5	+4	+5	+4	+2	+29.8%	+25.2%	+15.1%	+21.8%	+15.5%	+7.8%
Counsellor Therapists	23	+6	+3	+5	+4	+3	+2	+34.1%	+16.3%	+27.2%	+19.5%	+14.3%	+7.9%
HSCP Trainees/ Students		-2	-1					-100.0%	-100.0%	-100.0%	-100.0%	-100.0%	-100.0%
Other Health & Social Care	37	-22	-23	-16	-13	-8	-5	-37.3%	-37.8%	-29.7%	-26.5%	-18.0%	-11.3%
Play Therapists/ Specialists	12	-3	-2	-4	-5	-0	+0	-22.6%	-16.7%	-24.2%	-28.3%	-0.6%	+0.4%
H&SC, Other	72	-22	-22	-15	-14	-5	-3	-23.7%	-23.8%	-17.1%	-16.8%	-7.1%	-4.1%
Health & Social Care Professionals	4,727	+878	+684	+578	+418	+160	+73	+22.8%	+16.9%	+13.9%	+9.7%	+3.5%	+1.6%
Executive Management	54	+18	+8	+12	+11	+3	-0	+49.3%	+17.1%	+28.6%	+25.9%	+5.8%	-0.8%
Senior Management (VIII & GM)	245	+67	+67	+52	+33	+13	+5	+37.7%	+37.9%	+27.0%	+15.8%	+5.7%	+2.0%
Management (VIII & above)	299	+85	+75	+64	+45	+16	+4	+39.7%	+33.6%	+27.3%	+17.5%	+5.7%	+1.5%
Middle Management (V-VII)	737	+241	+216	+167	+109	+50	+8	+48.5%	+41.6%	+29.3%	+17.3%	+7.2%	+1.1%
Other Administrative	14	-1	-3	-3	-2	-2		-5.5%	-17.5%	-16.8%	-12.3%	-11.5%	
Administrative/ Supervisory (V to VII)	751	+240	+213	+164	+107	+48	+8	+47.0%	+39.7%	+28.0%	+16.6%	+6.8%	+1.1%
Clerical (III & IV)	1,287	+197	+146	+69	+56	+15	-2	+18.1%	+12.8%	+5.7%	+4.5%	+1.1%	-0.2%
Management & Administrative	2,336	+522	+435	+297	+207	+79	+10	+28.7%	+22.9%	+14.6%	+9.7%	+3.5%	+0.4%
Catering	297	-29	-20	-22	-22	-15	-9	-8.9%	-6.3%	-7.0%	-6.9%	-4.9%	-3.1%
Household Services	864	-207	-147	-106	-48	-21	-13	-19.3%	-14.6%	-10.9%	-5.3%	-2.3%	-1.5%
Other Labs & Associated	1	-0	+0		+0	+0	-0	-2.8%	+4.0%		+4.0%	+4.0%	-8.0%
Other Support	171	-63	-62	-58	-51	+6	+0	-26.8%	-26.5%	-25.2%	-22.9%	+3.9%	+0.3%
Portering	93	-19	-18	-13	-17	-8	-2	-17.1%	-16.1%	-12.1%	-15.1%	-8.4%	-2.3%
Support	1,426	-318	-247	-199	-137	-38	-25	-18.2%	-14.7%	-12.2%	-8.8%	-2.6%	-1.7%

Jul 2021 (Dec 2015 figure: 28,322)	WTE Jul 2021	WTE change since Dec 16	WTE change since Dec 17	WTE change since Dec 18	WTE change since Dec 19	WTE change since Dec 20	WTE change since Apr 21	% change since Dec 16	% change since Dec 17	% change since Dec 18	% change since Dec 19	% change since Dec 20	% change since Apr 21
Overall	32,780	+3,543	+2,279	+1,655	+1,244	+420	+270	+12.1%	+7.5%	+5.3%	+3.9%	+1.3%	+0.8%
Maintenance	205	-24	-28	-18	-10	-11	-5	-10.3%	-12.1%	-7.9%	-4.6%	-5.3%	-2.4%
Technical Services	18	+13	+13	+12	+10	+7	+3	+252.9%	+252.9%	+195.1%	+122.2%	+62.2%	+19.2%
Maintenance/ Technical	223	-11	-15	-6	+0	-5	-2	-4.6%	-6.4%	-2.5%	+0.0%	-2.0%	-0.9%
General Support	1,649	-328	-262	-204	-137	-42	-27	-16.6%	-13.7%	-11.0%	-7.7%	-2.5%	-1.6%
HCA (Student Nurse/Midwife COVID-19)	5	+5	+5	+5	+5	-17	-7	-100.0%	-100.0%	-100.0%	-100.0%	-77.6%	-56.8%
HCA, Nurse's Aide, etc.	11,341	+1,541	+1,080	+680	+503	+181	+141	+15.7%	+10.5%	+6.4%	+4.6%	+1.6%	+1.3%
Health & Social Care Assistants	47	+10	+12	+12	+16	+8	+6	+27.4%	+33.6%	+33.1%	+51.6%	+22.0%	+15.1%
Health Care Assistants	11,393	+1,557	+1,097	+696	+524	+173	+141	+15.8%	+10.7%	+6.5%	+4.8%	+1.5%	+1.2%
Home Help	3,453	+563	-26	-79	-97	-71	+29	+19.5%	-0.8%	-2.2%	-2.7%	-2.0%	+0.9%
Care, other	1,882	+270	+206	+172	+100	+29	+22	+16.8%	+12.3%	+10.1%	+5.6%	+1.6%	+1.2%
Patient & Client Care	16,728	+2,389	+1,276	+789	+527	+130	+192	+16.7%	+8.3%	+5.0%	+3.3%	+0.8%	+1.2%

Source: Health Service Personnel Census