

Social Care Services Employment Report: March 2021

Employment by Staff Group

Mar 2021 (Dec 2020 figure: 32,359)	WTE Feb 2021	WTE Mar 2021	WTE change since Feb 21	% change since Feb 21	WTE change since Dec 20	WTE change since Mar 20
Overall	32,302	32,368	+65	+0.2%	+9	+984
Consultants	27	25	-1	-5.0%	-4	-2
Registrars	20	21	+0	+1.5%	+4	+1
SHO/ Interns	18	20	+2	+10.8%	-3	-0
Medical/ Dental, other	100	101	+0	+0.3%	-17	-1
Medical & Dental	165	167	+1	+0.8%	-20	-3
Nurse/ Midwife Manager	1,656	1,667	+11	+0.7%	+24	+63
Nurse/ Midwife Specialist & AN/MP	105	104	-1	-0.9%	+2	+12
Staff Nurse/ Staff Midwife	5,245	5,237	-8	-0.1%	+20	+86
Public Health Nurse	19	23	+3	+16.4%	+2	+4
Pre-registration Nurse/ Midwife Intern	75	80.64	+5	+7.1%	+78	+2
Pre-registration Nurse Intern (COVID-19)	10		-10	-100.0%	-32	
Post-registration Nurse/ Midwife Student				-100.0%		-1
Nursing/ Midwifery awaiting registration	14	14.50	+0	+1.6%	+0	-1
Nursing/ Midwifery Student	99	95	-4	-4.0%	+47	-0
Nursing/ Midwifery other	29	30	+1	+3.4%	+2	+5
Nursing & Midwifery	7,154	7,156	+3	+0.0%	+97	+171
Therapy Professions	1,118	1,133	+15	+1.3%	+42	+77
Health Science/ Diagnostics	26	27	+1	+2.7%	+2	+4
Social Care	2,799	2,805	+6	+0.2%	+13	+205
Social Workers	331	335	+4	+1.1%	+7	+16
Psychologists	234	235	+1	+0.3%	+4	+18
Pharmacy	24	25	+0	+1.9%	+1	+0
H&SC, Other	78	77	-1	-1.4%	-1	-10
Health & Social Care Professionals	4,610	4,635	+25	+0.5%	+68	+311
Management (VIII & above)	290	293	+3	+1.1%	+10	+35
Administrative/ Supervisory (V to VII)	726	744	+18	+2.4%	+41	+83
Clerical (III & IV)	1,268	1,293	+25	+2.0%	+21	+49
Management & Administrative	2,284	2,330	+46	+2.0%	+72	+168
Support	1,446	1,444	-2	-0.2%	-20	-116
Maintenance/ Technical	223	223	-0	-0.0%	-4	-3
General Support	1,669	1,667	-2	-0.1%	-24	-119
Health Care Assistants	11,185	11,195	+10	+0.1%	-26	+434
Home Help	3,381	3,365	-17	-0.5%	-160	-74
Care, other	1,853	1,854	+0	+0.0%	+1	+96
Patient & Client Care	16,420	16,413	-7	-0.0%	-185	+456

Social Care Services Employment by Administration (HSE / S38): March 2021

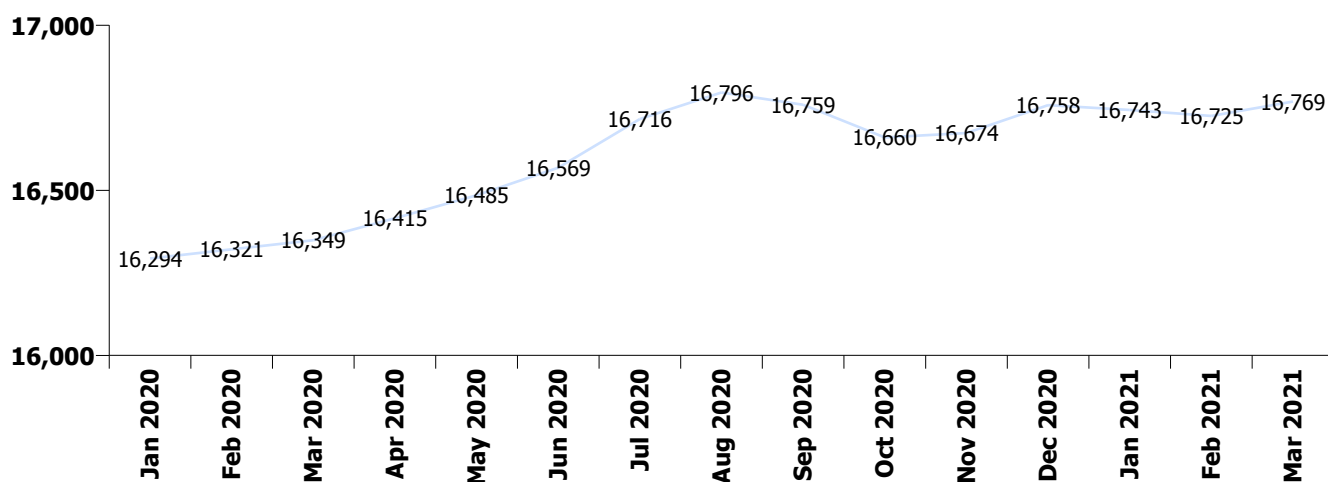
Mar 2021 (Dec 2020 figure: 32,359)	WTE Feb 2021	WTE Mar 2021	WTE change since Feb 21	% change since Feb 21	WTE change since Dec 20	WTE change since Mar 20
Overall	32,302	32,368	+65	+0.2%	+9	+984
HSE	16,725	16,769	+44	+0.3%	+11	+420
Section 38	15,577	15,599	+22	+0.1%	-2	+565

HSE

Mar 2021 (Dec 2020 figure: 16,758)	WTE Feb 2021	WTE Mar 2021	WTE change since Feb 21	% change since Feb 21	WTE change since Dec 20	WTE change since Mar 20
Overall	16,725	16,769	+44	+0.3%	+11	+420
Consultants	10	9.50	-0	-4.4%	-2	-2
Registrars	9	9.56	+0	+2.7%	+3	+2
SHO/ Interns	7	8.00	+1	+14.3%	-4	-1
Medical/ Dental, other	90	91.62	+1	+1.5%	-16	+0
Medical & Dental	117	119	+2	+1.8%	-19	-1
Nurse/ Midwife Manager	973	975.11	+2	+0.2%	+17	+64
Nurse/ Midwife Specialist & AN/MP	55	55.63	+1	+1.7%	+3	+11
Staff Nurse/ Staff Midwife	3,234	3,235.79	+1	+0.0%	+25	+28
Public Health Nurse	19	22.63	+3	+16.4%	+2	+4
Pre-registration Nurse/ Midwife Intern	30	34.00	+4	+13.3%	+32	+7
Pre-registration Nurse Intern (COVID-19)	10		-10	-100.0%	-9	
Post-registration Nurse/ Midwife Student				-100.0%		-1
Nursing/ Midwifery awaiting registration	14	14.50	+0	+1.6%	+0	-1
Nursing/ Midwifery Student	54	48.50	-5	-9.8%	+23	+5
Nursing/ Midwifery other	12	11.66	-0	-0.1%	+1	+3
Nursing & Midwifery	4,347	4,349	+2	+0.0%	+71	+114
Therapy Professions	613	626.78	+14	+2.2%	+31	+63
Health Science/ Diagnostics	8	8.05	+0	+1.1%	-0	+2
Social Care	104	102.26	-2	-1.7%	-1	+12
Social Workers	154	153.86	-1	-0.3%	+3	+10
Psychologists	87	88.84	+2	+2.6%	+6	+13
Pharmacy	13	12.66	-0	-0.3%	+1	-0
H&SC, Other	27	26.81	-0	-1.5%	+0	+0
Health & Social Care Professionals	1,006	1,019	+13	+1.3%	+39	+100
Management (VIII & above)	136	138.68	+2	+1.6%	+6	+17
Administrative/ Supervisory (V to VII)	342	358.75	+17	+4.9%	+33	+64
Clerical (III & IV)	761	783.58	+23	+3.0%	+28	+53
Management & Administrative	1,239	1,281	+42	+3.4%	+67	+134
Support	779	779.22	+1	+0.1%	-3	-24
Maintenance/ Technical	111	110.11	-1	-1.0%	+0	+1
General Support	890	889	-1	-0.1%	-2	-23
Health Care Assistants	5,453	5,448.26	-5	-0.1%	-1	+112
Home Help	3,381	3,364.56	-17	-0.5%	-160	-74
Care, other	292	298.18	+6	+2.2%	+16	+57
Patient & Client Care	9,126	9,111	-15	-0.2%	-146	+95

Section 38

Mar 2021 (Dec 2020 figure: 15,601)	WTE Feb 2021	WTE Mar 2021	WTE change since Feb 21	% change since Feb 21	WTE change since Dec 20	WTE change since Mar 20
Overall	15,577	15,599	+22	+0.1%	-2	+565
Consultants	17	15.78	-1	-5.3%	-2	-0
Registrars	11	11.06	+0	+0.5%	+1	-1
SHO/ Interns	11	11.95	+1	+8.6%	+1	+1
Medical/ Dental, other	10	9.09	-1	-9.9%	-1	-1
Medical & Dental	49	48	-1	-1.8%	-1	-2
Nurse/ Midwife Manager	683	692.16	+9	+1.3%	+7	-0
Nurse/ Midwife Specialist & AN/MP	50	48.53	-2	-3.8%	-1	+1
Staff Nurse/ Staff Midwife	2,010	2,001.29	-9	-0.4%	-5	+59
Pre-registration Nurse/ Midwife Intern	45	46.64	+1	+2.9%	+47	-5
Pre-registration Nurse Intern (COVID-19)				-100.0%	-23	
Nursing/ Midwifery Student	45	46.64	+1	+2.9%	+23	-5
Nursing/ Midwifery other	17	18.33	+1	+5.8%	+1	+2
Nursing & Midwifery	2,806	2,807	+1	+0.0%	+25	+57
Therapy Professions	505	505.95	+1	+0.2%	+11	+14
Health Science/ Diagnostics	18	18.60	+1	+3.3%	+2	+2
Social Care	2,695	2,702.50	+7	+0.3%	+14	+193
Social Workers	177	181.17	+4	+2.3%	+4	+6
Psychologists	147	145.72	-1	-1.0%	-1	+5
Pharmacy	11	11.88	+0	+4.3%	+0	+1
H&SC, Other	51	49.91	-1	-1.3%	-1	-10
Health & Social Care Professionals	3,604	3,616	+11	+0.3%	+29	+210
Management (VIII & above)	153	154.34	+1	+0.6%	+4	+19
Administrative/ Supervisory (V to VII)	384	385.02	+1	+0.3%	+8	+19
Clerical (III & IV)	507	509.77	+2	+0.5%	-7	-4
Management & Administrative	1,045	1,049	+4	+0.4%	+5	+34
General Support	779	777	-2	-0.2%	-22	-96
Patient & Client Care	7,294	7,302	+8	+0.1%	-39	+361



Social Care Services Employment by Care Group & Administration (HSE / S38): March 2021

Social Care

Mar 2021 (Dec 2020 figure: 32,359)	WTE Feb 2021	WTE Mar 2021	WTE change since Feb 21	% change since Feb 21	WTE change since Dec 20	WTE change since Mar 20
Overall	32,302	32,368	+65	+0.2%	+9	+984
HSE	4,147	4,181	+33	+0.8%	+96	+233
Section 38	14,836	14,858	+22	+0.1%	-1	+537
Disabilities	18,983	19,039	+56	+0.3%	+95	+770
HSE	12,578	12,588	+10	+0.1%	-85	+187
Section 38	741	741	-0	-0.0%	-1	+27
Older People	13,319	13,329	+10	+0.1%	-86	+214

Disabilities

Mar 2021 (Dec 2020 figure: 18,944)	WTE Feb 2021	WTE Mar 2021	WTE change since Feb 21	% change since Feb 21	WTE change since Dec 20	WTE change since Mar 20
Overall	18,983	19,039	+56	+0.3%	+95	+770
Consultants	23	22	-1	-3.9%	-3	-2
Registrars	10	10	+0	+0.6%	+2	-1
SHO/ Interns	7	8	+1	+13.6%	-1	-0
Medical/ Dental, other	14	14	+0	+0.1%		-0
Medical & Dental	54	54	+0	+0.2%	-2	-2
Nurse/ Midwife Manager	901	907	+6	+0.7%	+10	+18
Nurse/ Midwife Specialist & AN/MP	67	65	-2	-2.8%	+1	+3
Staff Nurse/ Staff Midwife	2,604	2,606	+2	+0.1%	+13	+47
Public Health Nurse	7	10	+3	+44.9%	+3	+4
Pre-registration Nurse/ Midwife Intern	75	81	+5	+7.1%	+52	+2
Pre-registration Nurse Intern (COVID-19)	10		-10	-100.0%		
Nursing/ Midwifery awaiting registration	13	13			-1	-2
Nursing/ Midwifery Student	98	94	-4	-4.3%	+46	-0
Nursing/ Midwifery other	25	26	+1	+4.1%	+2	+2
Nursing & Midwifery	3,701	3,708	+6	+0.2%	+76	+74
Therapy Professions	800	802	+3	+0.4%	+7	+31
Health Science/ Diagnostics	21	22	+1	+2.9%	+2	+4
Social Care	2,797	2,802	+6	+0.2%	+13	+205
Social Workers	229	232	+3	+1.3%	+4	+8
Psychologists	232	232	+1	+0.3%	+3	+18
Pharmacy	6	6	+0	+0.5%	+0	-0
H&SC, Other	76	75	-1	-1.4%	-1	-10
Health & Social Care Professionals	4,161	4,172	+12	+0.3%	+29	+256
Management (VIII & above)	211	215	+4	+1.7%	+11	+32
Administrative/ Supervisory (V to VII)	537	548	+11	+2.0%	+21	+55
Clerical (III & IV)	683	695	+12	+1.8%	+10	+22
Management & Administrative	1,431	1,458	+27	+1.9%	+42	+109
Support	648	648	-0	-0.0%	-15	-88
Maintenance/ Technical	129	130	+1	+0.4%	-3	+3
General Support	778	778	+0	+0.0%	-17	-85
Health Care Assistants	7,067	7,081	+14	+0.2%	-21	+355
Home Help	92	90	-1	-1.5%	-3	-16
Care, other	1,701	1,698	-3	-0.1%	-8	+79
Patient & Client Care	8,859	8,869	+10	+0.1%	-32	+418

Older People

Mar 2021 (Dec 2020 figure: 13,415)	WTE Feb 2021	WTE Mar 2021	WTE change since Feb 21	% change since Feb 21	WTE change since Dec 20	WTE change since Mar 20
Overall	13,319	13,329	+10	+0.1%	-86	+214
Consultants	4	4	-0	-10.9%	-1	-1
Registrars	11	11	+0	+2.4%	+2	+1
SHO/ Interns	11	12	+1	+9.1%	-2	
Medical/ Dental, other	86	86	+0	+0.4%	-17	-1
Medical & Dental	112	113	+1	+1.0%	-18	-0
Nurse/ Midwife Manager	755	760	+5	+0.6%	+14	+45
Nurse/ Midwife Specialist & AN/MP	38	39	+1	+2.3%	+1	+9
Staff Nurse/ Staff Midwife	2,641	2,631	-10	-0.4%	+7	+39
Public Health Nurse	13	13	+0	+0.9%	-1	+0
<i>Post-registration Nurse/ Midwife Student</i>				-100.0%	-1	-1
<i>Nursing/ Midwifery awaiting registration</i>	1	2	+0	+18.1%	+1	+1
Nursing/ Midwifery Student	1	2	+0	+18.1%	+0	
Nursing/ Midwifery other	4	4	-0	-0.5%		+3
Nursing & Midwifery	3,452	3,449	-4	-0.1%	+21	+97
Therapy Professions	319	330	+12	+3.7%	+35	+46
Health Science/ Diagnostics	5	5	+0	+1.8%	-0	+0
Social Care	3	3			+0	
Social Workers	102	103	+1	+0.5%	+3	+8
Psychologists	2	2			+1	+0
Pharmacy	18	18	+0	+2.4%	+1	+1
H&SC, Other	2	2				+0
Health & Social Care Professionals	450	463	+13	+2.8%	+40	+55
Management (VIII & above)	79	79	-0	-0.6%	-0	+3
Administrative/ Supervisory (V to VII)	189	196	+7	+3.6%	+20	+28
Clerical (III & IV)	585	598	+13	+2.3%	+11	+28
Management & Administrative	853	872	+19	+2.3%	+30	+59
Support	798	796	-2	-0.3%	-6	-28
Maintenance/ Technical	94	93	-1	-0.7%	-2	-6
General Support	892	889	-3	-0.3%	-7	-34
Health Care Assistants	4,119	4,114	-5	-0.1%	-4	+79
Home Help	3,289	3,274	-15	-0.5%	-157	-58
Care, other	153	156	+3	+1.8%	+9	+18
Patient & Client Care	7,561	7,544	-17	-0.2%	-152	+38

Social Care Services Employment by CHO etc. Mar 2021

CHO 1

Mar 2021 (Dec 2020 figure: 3,464)	WTE Feb 2021	WTE Mar 2021	WTE change since Feb 21	% change since Feb 21	WTE change since Dec 20	WTE change since Mar 20
Overall	3,439	3,461	+22	+0.6%	-4	+106
Medical/ Dental, other	19	19	-0	-0.9%	-17	-5
Medical & Dental	19	19	-0	-0.9%	-17	-5
Nurse/ Midwife Manager	193	193	+0	+0.3%	-1	+1
Nurse/ Midwife Specialist & AN/MP	19	19	+0	+0.2%	+1	+3
Staff Nurse/ Staff Midwife	649	655	+5	+0.8%	+12	+17
Pre-registration Nurse/ Midwife Intern	19	24	+5	+27.0%	+21	+5
Pre-registration Nurse Intern (COVID-19)	6		-6	-100.0%		
Nursing/ Midwifery awaiting registration	11	11				
Nursing/ Midwifery Student	35	35	-1	-1.4%	+17	+5
Nursing/ Midwifery other	5	5				
Nursing & Midwifery	901	906	+5	+0.6%	+29	+26
Therapy Professions	58	56	-2	-3.4%	-0	+0
Health Science/ Diagnostics	2	2	+0	+5.6%	+0	+0
Social Care	11	11	-1	-5.2%	-1	+2
Social Workers	35	34	-1	-1.9%	+1	-1
Psychologists	11	11	-0	-0.7%	+4	+6
H&SC, Other	10	10	-0	-2.0%	+0	-3
Health & Social Care Professionals	127	124	-3	-2.7%	+4	+5
Management (VIII & above)	25	25				+3
Administrative/ Supervisory (V to VII)	53	53	+0	+0.2%	+4	+10
Clerical (III & IV)	139	138	-0	-0.2%	-2	+4
Management & Administrative	216	216	-0	-0.1%	+2	+17
Support	168	168	+0	+0.2%	+0	-6
Maintenance/ Technical	12	12	-0	-3.6%	-1	-1
General Support	180	180	-0	-0.1%	-1	-7
Health Care Assistants	1,361	1,359	-2	-0.1%	+4	+31
Home Help	575	594	+19	+3.4%	-24	+38
Care, other	60	63	+2	+4.1%	-0	-0
Patient & Client Care	1,995	2,016	+20	+1.0%	-21	+69

CHO 2

Mar 2021 (Dec 2020 figure: 3,105)	WTE Feb 2021	WTE Mar 2021	WTE change since Feb 21	% change since Feb 21	WTE change since Dec 20	WTE change since Mar 20
Overall	3,070	3,059	-11	-0.4%	-46	+63
Consultants	3	3				
Registrars	2	2				-1
Medical/ Dental, other	12	12	+0	+0.7%		
Medical & Dental	17	17	+0	+0.5%		-1
Nurse/ Midwife Manager	150	150	+0	+0.0%	+6	+13
Nurse/ Midwife Specialist & AN/MP	8	9	+1	+12.6%	+1	+1
Staff Nurse/ Staff Midwife	470	474	+4	+0.8%	-0	+3
Public Health Nurse	1	1				+0
<i>Pre-registration Nurse Intern (COVID-19)</i>				-100.0%		
Nursing/ Midwifery Student				-100.0%	-1	
Nursing & Midwifery	629	634	+5	+0.8%	+6	+17
Therapy Professions	63	63	+0	+0.7%	+4	-5
Health Science/ Diagnostics	1	1				
Social Care	247	246	-1	-0.3%	+3	+26
Social Workers	37	37	+0	+0.2%	+1	+2
Psychologists	16	15	-0	-0.5%	+1	-1
Pharmacy	1	1				+0
H&SC, Other	11	10	-1	-7.7%	-1	-5
Health & Social Care Professionals	375	374	-1	-0.3%	+8	+17
Management (VIII & above)	19	17	-2	-10.6%	-1	
Administrative/ Supervisory (V to VII)	53	52	-2	-3.4%	-2	+2
Clerical (III & IV)	111	113	+2	+1.4%	-3	-9
Management & Administrative	183	181	-2	-1.2%	-6	-7
Support	96	97	+1	+1.2%	-2	-7
Maintenance/ Technical	32	32			+0	+1
General Support	128	129	+1	+0.9%	-2	-6
Health Care Assistants	1,144	1,146	+2	+0.2%	-4	+33
Home Help	425	408	-17	-3.9%	-48	-3
Care, other	169	170	+0	+0.3%	+1	+12
Patient & Client Care	1,737	1,724	-14	-0.8%	-51	+43

CHO 3

Mar 2021 (Dec 2020 figure: 2,976)	WTE Feb 2021	WTE Mar 2021	WTE change since Feb 21	% change since Feb 21	WTE change since Dec 20	WTE change since Mar 20
Overall	2,993	3,016	+22	+0.7%	+40	+227
Consultants	2	2			-1	-0
Medical/ Dental, other	7	7				+1
Medical & Dental	9	9			-1	+1
Nurse/ Midwife Manager	141	141	+0	+0.3%	+2	+2
Nurse/ Midwife Specialist & AN/MP	13	13	+0	+0.1%	-1	-0
Staff Nurse/ Staff Midwife	506	506	+0	+0.0%	+4	+19
Public Health Nurse	1	1	+0	+1.0%		
Public Health Nurse	1	1	+0	+1.0%		
Pre-registration Nurse/ Midwife Intern	8	8			-4	-4
Pre-registration Nurse Intern (COVID-19)				-100.0%		
Nursing/ Midwifery Student	8	8			+7	-4
Nursing/ Midwifery other	4	4				
Nursing & Midwifery	673	673	+1	+0.1%	+12	+17
Therapy Professions	109	112	+3	+2.8%	-1	+10
Health Science/ Diagnostics	2	2			-0	+2
Social Care	278	282	+5	+1.7%	-2	+35
Social Workers	22	24	+2	+9.8%	+1	+1
Psychologists	20	19	-2	-7.8%	-2	+1
Pharmacy	1	1				
H&SC, Other	11	11	+0	+1.1%	+0	-0
Health & Social Care Professionals	443	452	+8	+1.9%	-4	+48
Management (VIII & above)	13	14	+1	+8.6%	+1	+2
Administrative/ Supervisory (V to VII)	64	64	-0	-0.2%	+2	+4
Clerical (III & IV)	111	114	+4	+3.3%	+7	+4
Management & Administrative	188	193	+5	+2.5%	+11	+10
Support	116	117	+1	+0.9%	+1	-1
Maintenance/ Technical	42	42	-1	-1.5%	+1	+5
General Support	158	158	+0	+0.2%	+2	+4
Health Care Assistants	1,111	1,119	+7	+0.6%	+18	+101
Home Help	214	212	-2	-0.7%	-4	+31
Care, other	197	200	+3	+1.4%	+7	+16
Patient & Client Care	1,523	1,531	+8	+0.5%	+20	+148

CHO 4

Mar 2021 (Dec 2020 figure: 5,486)	WTE Feb 2021	WTE Mar 2021	WTE change since Feb 21	% change since Feb 21	WTE change since Dec 20	WTE change since Mar 20
Overall	5,469	5,465	-4	-0.1%	-21	+94
Consultants	4	4				
Registrars	3	3				
SHO/ Interns	1	1				+1
Medical/ Dental, other	22	23	+1	+6.3%	-0	+1
Medical & Dental	29	31	+1	+4.7%	-0	+2
Nurse/ Midwife Manager	215	215	+0	+0.2%	+3	+6
Nurse/ Midwife Specialist & AN/MP	19	18	-1	-5.2%	-2	+0
Staff Nurse/ Staff Midwife	849	842	-8	-0.9%	+1	+6
Public Health Nurse	6	6				+2
Pre-registration Nurse/ Midwife Intern	9	9			+3	+2
Pre-registration Nurse Intern (COVID-19)				-100.0%		
Post-registration Nurse/ Midwife Student				-100.0%	-1	-1
Nursing/ Midwifery awaiting registration	2	2				+2
Nursing/ Midwifery Student	11	11			+1	+3
Nursing/ Midwifery other				-100.0%		-1
Nursing & Midwifery	1,100	1,092	-8	-0.7%	+3	+16
Therapy Professions	155	158	+4	+2.4%	+13	+9
Health Science/ Diagnostics	1	1				
Social Care	244	244	-1	-0.3%	+4	+14
Social Workers	39	38	-0	-0.2%	-1	+2
Psychologists	36	36	+0	+0.5%	+0	+3
Pharmacy	4	4	-0	-1.1%	-0	+0
H&SC, Other	10	10			+0	+2
Health & Social Care Professionals	489	492	+3	+0.6%	+16	+29
Management (VIII & above)	38	37	-1	-2.5%	+0	+3
Administrative/ Supervisory (V to VII)	76	79	+3	+4.4%	+1	+5
Clerical (III & IV)	222	222	-0	-0.1%	+1	+11
Management & Administrative	335	337	+2	+0.6%	+2	+18
Support	248	248	-0	-0.0%	-4	+9
Maintenance/ Technical	19	19	-0	-0.1%	+1	+3
General Support	267	267	-0	-0.0%	-3	+12
Health Care Assistants	1,867	1,867	-0	-0.0%	+15	+73
Home Help	1,015	1,004	-11	-1.1%	-62	-99
Care, other	366	375	+9	+2.3%	+9	+42
Patient & Client Care	3,248	3,246	-3	-0.1%	-39	+16

CHO 5

Mar 2021 (Dec 2020 figure: 3,213)	WTE Feb 2021	WTE Mar 2021	WTE change since Feb 21	% change since Feb 21	WTE change since Dec 20	WTE change since Mar 20
Overall	3,233	3,253	+20	+0.6%	+40	+120
Consultants	1	1	+0	+14.9%	+0	-0
Medical/ Dental, other	15	15			+1	+6
Medical & Dental	16	16	+0	+0.7%	+1	+6
Nurse/ Midwife Manager	159	160	+2	+1.0%	+2	+11
Nurse/ Midwife Specialist & AN/MP	8	8	+0	+0.5%	+2	+4
Staff Nurse/ Staff Midwife	475	478	+3	+0.7%	+2	-4
Public Health Nurse	8	11	+3	+40.1%	+2	+2
Pre-registration Nurse/ Midwife Intern	9	9			+9	+4
Pre-registration Nurse Intern (COVID-19)	1		-1	-100.0%		
Nursing/ Midwifery awaiting registration				-100.0%	-2	-4
Nursing/ Midwifery Student	10	9	-1	-10.0%	+8	-0
Nursing Education/Clinical	1	1			+1	+1
Nursing/ Midwifery other	1	1			+1	+1
Nursing & Midwifery	660	667	+7	+1.1%	+16	+14
Therapy Professions	105	110	+6	+5.3%	+13	+8
Social Care	139	142	+2	+1.7%	-1	-3
Social Workers	29	30	+1	+2.4%	+2	+5
Psychologists	20	22	+2	+9.7%	+3	+7
Pharmacy	1	1			+1	
Pharmacy	1	1			+0	
H&SC, Other	5	5	-0	-1.5%	-0	-3
Health & Social Care Professionals	299	310	+10	+3.5%	+16	+14
Management (VIII & above)	21	21	+0	+0.2%	+4	+5
Administrative/ Supervisory (V to VII)	68	71	+3	+5.0%	+13	+18
Clerical (III & IV)	101	104	+3	+3.0%	+11	+15
Management & Administrative	189	196	+6	+3.4%	+29	+38
Support	94	92	-2	-1.9%	-3	-38
Maintenance/ Technical	10	10	-0	-0.4%	-1	-5
General Support	105	103	-2	-1.8%	-4	-43
Health Care Assistants	1,168	1,172	+4	+0.4%	-8	+107
Home Help	630	626	-4	-0.6%	-12	-20
Care, other	166	164	-3	-1.5%	+2	+5
Patient & Client Care	1,964	1,962	-2	-0.1%	-18	+92

CHO 6

Mar 2021 (Dec 2020 figure: 2,020)	WTE Feb 2021	WTE Mar 2021	WTE change since Feb 21	% change since Feb 21	WTE change since Dec 20	WTE change since Mar 20
Overall	2,034	2,013	-21	-1.0%	-7	+20
Consultants	3	3				
Registrars	3	3			+2	+2
Medical/ Dental, other	4	3	-1	-25.9%	-1	-2
Medical & Dental	10	9	-1	-10.4%	+1	-0
Nurse/ Midwife Manager	105	104	-1	-0.7%	-2	-6
Nurse/ Midwife Specialist & AN/MP	1	1				
Staff Nurse/ Staff Midwife	344	341	-3	-0.7%	-7	-8
Nursing & Midwifery	450	446	-3	-0.7%	-9	-13
Therapy Professions	95	94	-0	-0.5%	+6	+6
Social Care	365	359	-6	-1.7%	-2	+35
Social Workers	20	21	+1	+5.4%	+1	+1
Psychologists	16	16	+0	+0.4%	+2	-2
Pharmacy	3	3	+0	+18.1%	+0	+0
H&SC, Other	1	1	-0	-6.5%	+0	-1
Health & Social Care Professionals	500	495	-5	-1.1%	+6	+39
Management (VIII & above)	35	36	+1	+2.8%	+1	+1
Administrative/ Supervisory (V to VII)	77	80	+3	+4.3%	+7	+4
Clerical (III & IV)	92	92	+0	+0.1%	+3	+4
Management & Administrative	204	208	+4	+2.1%	+11	+9
Support	124	123	-1	-1.0%	-5	-15
Maintenance/ Technical	13	13			-1	-4
General Support	137	136	-1	-0.9%	-6	-19
Health Care Assistants	490	485	-6	-1.1%	+5	+13
Care, other	243	234	-9	-3.7%	-16	-9
Patient & Client Care	734	719	-15	-2.0%	-11	+4

CHO 7

Mar 2021 (Dec 2020 figure: 4,125)	WTE Feb 2021	WTE Mar 2021	WTE change since Feb 21	% change since Feb 21	WTE change since Dec 20	WTE change since Mar 20
Overall	4,089	4,092	+3	+0.1%	-33	+109
Consultants	1	1				
Registrars	3	3	+0	+2.0%	+0	+0
SHO/ Interns	9	10	+1	+10.6%	+1	+1
Medical/ Dental, other	3	3				-2
Medical & Dental	16	17	+1	+6.5%	+1	-1
Nurse/ Midwife Manager	208	218	+11	+5.2%	+14	+18
Nurse/ Midwife Specialist & AN/MP	7	7	-0	-0.1%	+0	-1
Staff Nurse/ Staff Midwife	620	615	-5	-0.8%	-5	+27
<i>Pre-registration Nurse/ Midwife Intern</i>	7	8	+1	+7.1%	+8	
<i>Nursing/ Midwifery awaiting registration</i>	1	2	+0	+18.1%	+2	+1
Nursing/ Midwifery Student	8	9	+1	+8.8%	+8	+1
Nursing/ Midwifery other	2	3	+1	+66.7%	+1	+2
Nursing & Midwifery	845	853	+7	+0.9%	+18	+46
Therapy Professions	146	149	+3	+2.2%	-3	+8
Health Science/ Diagnostics	3	4	+1	+20.0%	+1	+1
Social Care	385	386	+0	+0.1%	-3	+25
Social Workers	46	45	-1	-1.4%	+1	-2
Psychologists	29	29			-3	-0
Pharmacy	6	6	+0	+0.5%	+0	-1
H&SC, Other	3	3				
Health & Social Care Professionals	618	622	+4	+0.6%	-7	+30
Management (VIII & above)	52	52	-0	-0.6%	+2	+10
Administrative/ Supervisory (V to VII)	106	105	-1	-0.9%	-1	+13
Clerical (III & IV)	137	137	-0	-0.1%	-1	+2
Management & Administrative	295	294	-1	-0.5%	-0	+25
Support	267	267	-1	-0.2%	-7	-3
Maintenance/ Technical	34	35	+1	+3.1%	-0	+2
General Support	301	301	+0	+0.1%	-8	-1
Health Care Assistants	1,473	1,472	-1	-0.1%	-32	-3
Home Help	130	129	-1	-0.6%	-3	-8
Care, other	411	405	-6	-1.6%	-3	+21
Patient & Client Care	2,014	2,006	-8	-0.4%	-37	+9

CHO 8

Mar 2021 (Dec 2020 figure: 3,689)	WTE Feb 2021	WTE Mar 2021	WTE change since Feb 21	% change since Feb 21	WTE change since Dec 20	WTE change since Mar 20
Overall	3,700	3,705	+5	+0.1%	+16	+82
Consultants				-100.0%	-1	-1
Registrars	1	1				
Medical/ Dental, other	12	12	+0	+0.4%		+0
Medical & Dental	13	13	+0	+0.4%	-1	-1
Nurse/ Midwife Manager	212	212	+0	+0.0%	+4	+17
Nurse/ Midwife Specialist & AN/MP	10	10	-0	-1.4%	+0	+0
Staff Nurse/ Staff Midwife	579	575	-4	-0.7%	+8	+6
Public Health Nurse	4	4	+0	+2.6%	+0	+1
Pre-registration Nurse/ Midwife Intern	6	6	-0	-2.9%	+6	-7
Pre-registration Nurse Intern (COVID-19)				-100.0%		
Nursing/ Midwifery Student	6	6	-0	-2.9%	+2	-7
Nursing/ Midwifery other	9	9	-0	-0.1%	+0	+2
Nursing & Midwifery	820	816	-4	-0.5%	+14	+19
Therapy Professions	122	120	-2	-1.8%	-2	+8
Health Science/ Diagnostics	2	2				
Social Care	377	376	-2	-0.5%	-4	+14
Social Workers	30	31	+1	+2.4%	+2	+2
Psychologists	24	25	+0	+1.7%	+2	+2
Pharmacy	3	3			+1	+1
H&SC, Other	6	7	+0	+6.5%	+1	
Health & Social Care Professionals	565	563	-3	-0.5%	-1	+26
Management (VIII & above)	21	20	-1	-2.9%	-0	+4
Administrative/ Supervisory (V to VII)	76	77	+2	+2.1%	-1	-4
Clerical (III & IV)	158	158	-0	-0.2%	-2	+1
Management & Administrative	254	255	+1	+0.3%	-2	+1
Support	67	66	-1	-0.8%	-0	-6
Maintenance/ Technical	36	36	+0	+0.0%	-2	-4
General Support	103	102	-1	-0.5%	-2	-10
Health Care Assistants	1,416	1,427	+11	+0.8%	+11	+56
Home Help	393	391	-2	-0.6%	-6	-13
Care, other	135	138	+3	+2.2%	+3	+4
Patient & Client Care	1,944	1,956	+12	+0.6%	+8	+47

CHO 9

Mar 2021 (Dec 2020 figure: 4,199)	WTE Feb 2021	WTE Mar 2021	WTE change since Feb 21	% change since Feb 21	WTE change since Dec 20	WTE change since Mar 20
Overall	4,193	4,222	+30	+0.7%	+23	+156
Consultants	13	12	-1	-10.8%	-2	-1
Registrars	9	9	+0	+2.9%	+2	-1
SHO/ Interns	8	9	+1	+12.5%	-4	-2
Medical/ Dental, other	7	7				
Medical & Dental	37	37	-0	-0.5%	-4	-4
Nurse/ Midwife Manager	274	272	-2	-0.8%	-4	+2
Nurse/ Midwife Specialist & AN/MP	20	19	-1	-4.6%	+1	+5
Staff Nurse/ Staff Midwife	752	751	-1	-0.1%	+4	+19
Public Health Nurse				-100.0%		-0
Pre-registration Nurse/ Midwife Intern	18	18			+10	+3
Pre-registration Nurse Intern (COVID-19)	3		-3	-100.0%		
Nursing/ Midwifery Student	21	18	-3	-14.3%	+5	+3
Nursing/ Midwifery other	9	9	+0	+0.1%	+0	+1
Nursing & Midwifery	1,076	1,069	-7	-0.6%	+6	+29
Therapy Professions	266	270	+3	+1.3%	+12	+33
Health Science/ Diagnostics	15	15			+1	+1
Social Care	752	760	+8	+1.1%	+19	+58
Social Workers	73	73	+0	+0.3%	+0	+7
Psychologists	62	62	-0	-0.0%	-2	+2
Pharmacy	6	6				+1
H&SC, Other	19	19	-0	-1.8%	-0	-0
Health & Social Care Professionals	1,192	1,204	+12	+1.0%	+30	+101
Management (VIII & above)	49	53	+5	+9.4%	+3	+8
Administrative/ Supervisory (V to VII)	129	137	+9	+6.9%	+16	+31
Clerical (III & IV)	160	179	+18	+11.5%	+8	+12
Management & Administrative	337	369	+32	+9.5%	+28	+52
Support	265	265	-0	-0.2%	-0	-50
Maintenance/ Technical	24	24			-1	
General Support	290	289	-0	-0.1%	-1	-50
Health Care Assistants	1,154	1,147	-7	-0.6%	-35	+23
Care, other	105	106	+1	+0.9%	-1	+5
Patient & Client Care	1,260	1,253	-6	-0.5%	-36	+27

other Community Services

Mar 2021 (Dec 2020 figure: 81)	WTE Feb 2021	WTE Mar 2021	WTE change since Feb 21	% change since Feb 21	WTE change since Dec 20	WTE change since Mar 20
Overall	81	81	-0	-0.4%	-1	+6
Health Science/ Diagnostics				-100.0%		
Health & Social Care Professionals				-100.0%		
Management (VIII & above)	18	18	+0	+1.7%	+0	+1
Administrative/ Supervisory (V to VII)	25	25	-0	-0.4%	+1	+1
Clerical (III & IV)	38	37	-1	-1.5%	-2	+5
Management & Administrative	81	80	-0	-0.4%	-1	+6
Health Care Assistants	0	0				+0
Patient & Client Care	0	0				+0

Social Care Services Employment by CHO & Admin : Mar 2021

Mar 2021 (Dec 2020 figure: 32,359)	WTE Feb 2021	WTE Mar 2021	WTE change since Feb 21	% change since Feb 21	WTE change since Dec 20	WTE change since Mar 20
Overall	32,302	32,368	+65	+0.2%	+9	+984
CHO 1	3,439	3,461	+22	+0.6%	-4	+106
Health Service Executive	1,783	1,768	-15	-0.9%	-40	+46
Bros. of Charity, West Region	1,287	1,292	+4	+0.3%	-6	+17
Section 38 Voluntary Agencies	1,287	1,292	+4	+0.3%	-6	+17
CHO 2	3,070	3,059	-11	-0.4%	-46	+63
Health Service Executive	1,202	1,210	+8	+0.7%	+36	+114
Bros. of Charity, Clare	377	383	+6	+1.5%	+11	+51
Bros. of Charity, Limerick	574	578	+4	+0.7%	-14	+51
Daughters of Charity, Limerick	550	553	+4	+0.7%	+4	+10
Daughters of Charity, Roscrea	290	291	+1	+0.4%	+2	+2
Section 38 Voluntary Agencies	1,792	1,806	+14	+0.8%	+4	+113
CHO 3	2,993	3,016	+22	+0.7%	+40	+227
Health Service Executive	3,219	3,200	-19	-0.6%	-43	-27
Bros. of Charity, Southern	783	786	+3	+0.4%	+10	+51
Cope Foundation	1,146	1,152	+6	+0.5%	+5	+54
St. John of God, Kerry	321	326	+5	+1.6%	+6	+17
Section 38 Voluntary Agencies	2,250	2,264	+14	+0.6%	+22	+121
CHO 4	5,469	5,465	-4	-0.1%	-21	+94
Health Service Executive	2,067	2,081	+14	+0.7%	+36	+59
Bros. of Charity, Waterford	667	676	+10	+1.4%	+8	+54
Carriglea Cairde Services	215	212	-2	-1.1%	-1	+1
St. Patrick's, Kilkenny	284	284	-1	-0.3%	-3	+6
Section 38 Voluntary Agencies	1,166	1,172	+6	+0.6%	+4	+61
CHO 5	3,233	3,253	+20	+0.6%	+40	+120
Health Service Executive	579	578	-1	-0.1%	+5	+10
Children's Sunshine Home	57	57			+1	-1
Leopardstown Park Hospital	203	201	-3	-1.4%	-6	-10
Royal Hospital, Donnybrook, Dublin	269	269	+0	+0.1%	+1	-6
St. John of God (IDS)	459	458	-0	-0.1%	-9	+6
Sunbeam House Services	468	451	-17	-3.7%	+1	+21
Section 38 Voluntary Agencies	1,456	1,435	-20	-1.4%	-12	+10
CHO 6	2,034	2,013	-21	-1.0%	-7	+20
Health Service Executive	1,143	1,149	+6	+0.5%	-8	+36
Cheeverstown House	395	394	-1	-0.1%	-1	-4
Kare, Newbridge, Co Kildare	380	374	-5	-1.4%	-3	+15
Peamount Hospital (Newcastle)	475	475	+0	+0.0%	-7	-18
Stewart's Hospital, (Palmerstown)	915	921	+7	+0.7%	+8	+64
St. John of God Liffey Services	782	778	-4	-0.5%	-22	+16
Section 38 Voluntary Agencies	2,946	2,943	-3	-0.1%	-25	+73
CHO 7	4,089	4,092	+3	+0.1%	-33	+109
Health Service Executive	2,090	2,089	-1	-0.1%	-5	-4
Muiriosa Foundation, Laois/Offaly	335	335	-0	-0.1%	+14	+35
Muiriosa Foundation, Longford/Westmeath	287	292	+5	+1.9%	+8	+23

Mar 2021 (Dec 2020 figure: 32,359)	WTE Feb 2021	WTE Mar 2021	WTE change since Feb 21	% change since Feb 21	WTE change since Dec 20	WTE change since Mar 20
Overall	32,302	32,368	+65	+0.2%	+9	+984
Muiriosa Foundation, South Kildare	342	343	+1	+0.4%	+1	+13
St. John of God, Drumcar	646	646	+0	+0.0%	-2	+15
Section 38 Voluntary Agencies	1,610	1,616	+6	+0.4%	+22	+86
CHO 8	3,700	3,705	+5	+0.1%	+16	+82
Health Service Executive	1,122	1,153	+30	+2.7%	+33	+72
Central Remedial Clinic	298	298	+0	+0.1%	+2	+14
Daughters of Charity, Dublin	1,075	1,075	-1	-0.1%	+11	+24
Incorporated Orthopaedic Hospital	269	271	+2	+0.8%	+4	+44
St. Michael's House, Dublin	1,428	1,426	-2	-0.2%	-27	+2
Section 38 Voluntary Agencies	3,070	3,070	-1	-0.0%	-10	+83
CHO 9	4,193	4,222	+30	+0.7%	+23	+156
other Community Services	81	81	-0	-0.4%	-1	+6

Disability Services Employment by CHO & Admin: Mar 2021

Mar 2021 (Dec 2020 figure: 18,944)	WTE Feb 2021	WTE Mar 2021	WTE change since Feb 21	% change since Feb 21	WTE change since Dec 20	WTE change since Mar 20
Overall	18,983	19,039	+56	+0.3%	+95	+770
CHO 1	1,575	1,575	-0	-0.0%	+28	+51
Health Service Executive	221	218	-3	-1.3%	+0	+11
Bros. of Charity, West Region	1,287	1,292	+4	+0.3%	-6	+17
Section 38 Voluntary Agencies	1,287	1,292	+4	+0.3%	-6	+17
CHO 2	1,508	1,510	+1	+0.1%	-6	+29
Health Service Executive	146	144	-1	-1.0%	-1	+24
Bros. of Charity, Clare	377	383	+6	+1.5%	+11	+51
Bros. of Charity, Limerick	574	578	+4	+0.7%	-14	+51
Daughters of Charity, Limerick	550	553	+4	+0.7%	+4	+10
Daughters of Charity, Roscrea	290	291	+1	+0.4%	+2	+2
Section 38 Voluntary Agencies	1,792	1,806	+14	+0.8%	+4	+113
CHO 3	1,938	1,951	+13	+0.7%	+3	+137
Health Service Executive	319	324	+5	+1.4%	+10	+21
Bros. of Charity, Southern	783	786	+3	+0.4%	+10	+51
Cope Foundation	1,146	1,152	+6	+0.5%	+5	+54
St. John of God, Kerry	321	326	+5	+1.6%	+6	+17
Section 38 Voluntary Agencies	2,250	2,264	+14	+0.6%	+22	+121
CHO 4	2,569	2,588	+19	+0.7%	+32	+141
Health Service Executive	419	436	+18	+4.2%	+42	+51
Bros. of Charity, Waterford	667	676	+10	+1.4%	+8	+54
Carriglea Cairde Services	215	212	-2	-1.1%	-1	+1
St. Patrick's, Kilkenny	284	284	-1	-0.3%	-3	+6
Section 38 Voluntary Agencies	1,166	1,172	+6	+0.6%	+4	+61
CHO 5	1,585	1,609	+24	+1.5%	+46	+113
Health Service Executive	244	243	-1	-0.3%	-0	+12
Children's Sunshine Home	57	57			+1	-1
St. John of God (IDS)	459	458	-0	-0.1%	-9	+6
Sunbeam House Services	468	451	-17	-3.7%	+1	+21
Section 38 Voluntary Agencies	983	965	-18	-1.8%	-8	+26
CHO 6	1,227	1,209	-18	-1.5%	-8	+38
Health Service Executive	129	131	+1	+1.0%	-5	+18
Cheeverstown House	395	394	-1	-0.1%	-1	-4
Kare, Newbridge, Co Kildare	380	374	-5	-1.4%	-3	+15
Peamount Hospital (Newcastle)	475	475	+0	+0.0%	-7	-18
Stewart's Hospital, (Palmerstown)	915	921	+7	+0.7%	+8	+64
St. John of God Liffey Services	782	778	-4	-0.5%	-22	+16
Section 38 Voluntary Agencies	2,946	2,943	-3	-0.1%	-25	+73
CHO 7	3,075	3,074	-2	-0.1%	-30	+92
Health Service Executive	608	604	-4	-0.6%	-6	-4
Muiriosa Foundation, Laois/Offaly	335	335	-0	-0.1%	+14	+35
Muiriosa Foundation, Longford/Westmeath	287	292	+5	+1.9%	+8	+23
Muiriosa Foundation, South Kildare	342	343	+1	+0.4%	+1	+13
St. John of God, Drumcar	646	646			-2	+15

Mar 2021 (Dec 2020 figure: 18,944)	WTE Feb 2021	WTE Mar 2021	WTE change since Feb 21	% change since Feb 21	WTE change since Dec 20	WTE change since Mar 20
Overall	18,983	19,039	+56	+0.3%	+95	+770
Section 38 Voluntary Agencies	1,610	1,616	+6	+0.4%	+22	+86
CHO 8	2,218	2,221	+3	+0.1%	+15	+82
Health Service Executive	481	500	+19	+3.9%	+27	+48
Central Remedial Clinic	298	298	+0	+0.1%	+2	+14
Daughters of Charity, Dublin	1,075	1,075	-1	-0.1%	+11	+24
St. Michael's House, Dublin	1,428	1,426	-2	-0.2%	-27	+2
Section 38 Voluntary Agencies	2,801	2,799	-3	-0.1%	-14	+40
CHO 9	3,282	3,298	+16	+0.5%	+14	+88
other Community Services	6	6	+0	+0.5%		+1

Older Persons Services Employment by CHO & Admin: Mar 2021

Mar 2021 (Dec 2020 figure: 13,415)	WTE Feb 2021	WTE Mar 2021	WTE change since Feb 21	% change since Feb 21	WTE change since Dec 20	WTE change since Mar 20
Overall	13,319	13,329	+10	+0.1%	-86	+214
CHO 1	1,864	1,886	+22	+1.2%	-31	+55
CHO 2	1,562	1,549	-12	-0.8%	-40	+35
CHO 3	1,056	1,065	+9	+0.9%	+37	+90
CHO 4	2,900	2,877	-23	-0.8%	-53	-47
CHO 5	1,649	1,645	-4	-0.2%	-6	+8
Health Service Executive	335	335	-0	-0.0%	+6	-2
Leopardstown Park Hospital	203	201	-3	-1.4%	-6	-10
Royal Hospital, Donnybrook, Dublin	269	269	+0	+0.1%	+1	-6
Section 38 Voluntary Agencies	472	470	-3	-0.5%	-5	-16
CHO 6	807	805	-3	-0.3%	+1	-18
CHO 7	1,014	1,018	+5	+0.5%	-3	+17
CHO 8	1,482	1,485	+3	+0.2%	+1	+1
Health Service Executive	641	653	+11	+1.8%	+5	+25
Incorporated Orthopaedic Hospital	269	271	+2	+0.8%	+4	+44
Section 38 Voluntary Agencies	269	271	+2	+0.8%	+4	+44
CHO 9	910	924	+14	+1.5%	+10	+68
other Community Services	75	75	-0	-0.5%	-1	+5

Social Care Services Employment by CHO etc. Mar 2021

Bros. of Charity, Clare

Mar 2021 (Dec 2020 figure: 372)	WTE Feb 2021	WTE Mar 2021	WTE change since Feb 21	% change since Feb 21	WTE change since Dec 20	WTE change since Mar 20
Overall	377	383	+6	+1.5%	+11	+51
Consultants	0	0			-0	-0
Medical & Dental	0	0			-0	-0
Staff Nurse/ Staff Midwife	3	3	-0	-0.7%	+1	+1
<i>Pre-registration Nurse Intern (COVID-19)</i>				-100.0%		
Nursing/ Midwifery Student				-100.0%	-1	
Nursing & Midwifery	3	3	-0	-0.7%	-0	+1
Social Care	83	84	+1	+1.2%	-1	+3
Social Workers	3	3				+0
Psychologists	3	2	-0	-14.2%	-0	-0
H&SC, Other	4	4				
Health & Social Care Professionals	93	93	+1	+0.6%	-1	+2
Management (VIII & above)	1	1				
Administrative/ Supervisory (V to VII)	5	5			+0	
Clerical (III & IV)	5	5			+0	+0
Management & Administrative	11	11			+0	+0
Health Care Assistants	238	243	+5	+2.2%	+11	+46
Care, other	33	33	-0	-0.1%	+2	+1
Patient & Client Care	271	276	+5	+1.9%	+12	+47

Mar 2021 (Dec 2020 figure: 592)	WTE Feb 2021	WTE Mar 2021	WTE change since Feb 21	% change since Feb 21	WTE change since Dec 20	WTE change since Mar 20
Overall	574	578	+4	+0.7%	-14	+51
Consultants	1	1			-1	
Medical & Dental	1	1			-1	
Nurse/ Midwife Manager	29	29	-0	-0.5%	+0	+2
Nurse/ Midwife Specialist & AN/MP	4	4				
Staff Nurse/ Staff Midwife	91	91	+1	+0.6%	-7	+4
Nursing & Midwifery	123	124	+0	+0.3%	-6	+6
Therapy Professions	13	14	+1	+7.9%	-1	+1
Social Care	100	102	+2	+1.8%	-2	+15
Social Workers	5	6	+1	+18.2%	+1	+1
Psychologists	6	6	+0	+0.7%	+0	
H&SC, Other	1	0	-0	-43.3%	-0	-1
Health & Social Care Professionals	125	129	+4	+2.9%	-2	+17
Management (VIII & above)	2	2				
Administrative/ Supervisory (V to VII)	7	7	-0	-1.3%	+1	+1
Clerical (III & IV)	10	10	-0	-0.2%	-1	-2
Management & Administrative	19	19	-0	-0.6%	-0	-1
Support	5	7	+1	+26.7%	+1	+0
Maintenance/ Technical	2	2				
General Support	7	9	+1	+19.4%	+1	+0
Health Care Assistants	203	198	-5	-2.4%	-6	+20
Care, other	96	99	+4	+3.7%	+1	+8
Patient & Client Care	299	298	-1	-0.5%	-5	+28

Mar 2021 (Dec 2020 figure: 776)	WTE Feb 2021	WTE Mar 2021	WTE change since Feb 21	% change since Feb 21	WTE change since Dec 20	WTE change since Mar 20
Overall	783	786	+3	+0.4%	+10	+51
Nurse/ Midwife Manager	12	13	+1	+4.9%	-2	-3
Nurse/ Midwife Specialist & AN/MP	3	2	-1	-34.0%	-1	-1
Staff Nurse/ Staff Midwife	56	57	+0	+0.7%	+1	-3
Nursing & Midwifery	71	71	-0	-0.0%	-2	-7
Therapy Professions	47	47	+0	+0.6%	+1	+4
Social Care	128	126	-1	-1.0%	+4	-1
Social Workers	18	18	+1	+3.1%	+1	+1
Psychologists	21	21	+0	+0.6%	+0	+3
Health & Social Care Professionals	213	213	-0	-0.1%	+6	+7
Management (VIII & above)	8	8				-0
Administrative/ Supervisory (V to VII)	11	12	+1	+9.0%	+2	+2
Clerical (III & IV)	34	35	+1	+1.7%	-1	+1
Management & Administrative	53	54	+2	+3.0%	+1	+3
Support	12	13	+0	+1.5%	-1	-2
Maintenance/ Technical	3	3				+1
General Support	15	15	+0	+1.2%	-1	-1
Health Care Assistants	227	224	-3	-1.5%	+2	+18
Care, other	204	209	+5	+2.6%	+5	+31
Patient & Client Care	431	433	+2	+0.4%	+7	+49

Mar 2021 (Dec 2020 figure: 668)	WTE Feb 2021	WTE Mar 2021	WTE change since Feb 21	% change since Feb 21	WTE change since Dec 20	WTE change since Mar 20
Overall	667	676	+10	+1.4%	+8	+54
Consultants	1	1	+0	+14.9%	+0	-0
Medical & Dental	1	1	+0	+14.9%	+0	-0
Nurse/ Midwife Manager	22	22			-0	+0
Staff Nurse/ Staff Midwife	47	49	+2	+3.2%	-1	+3
<i>Pre-registration Nurse/ Midwife Intern</i>	6	6			+6	+3
Nursing/ Midwifery Student	6	6			+6	+3
Nursing & Midwifery	76	77	+2	+2.0%	+5	+5
Therapy Professions	2	2			+1	-1
Social Care	69	71	+2	+2.6%	+1	+4
Social Workers	7	8	+1	+14.9%	-0	-1
Psychologists	4	4				
H&SC, Other	4	4	-0	-2.4%		-1
Health & Social Care Professionals	86	88	+3	+3.2%	+1	+1
Management (VIII & above)	5	5	+0	+1.0%		
Administrative/ Supervisory (V to VII)	16	16	-0	-0.5%	+0	+2
Clerical (III & IV)	25	26	+1	+2.8%	-1	+1
Management & Administrative	47	47	+1	+1.5%	-1	+3
Support	1	1			-0	
Maintenance/ Technical	3	3				
General Support	4	4			-0	
Health Care Assistants	356	363	+7	+1.9%	+1	+42
Care, other	97	95	-2	-2.4%	+1	+2
Patient & Client Care	454	458	+4	+1.0%	+2	+45

Carriglea Cairde Services

Mar 2021 (Dec 2020 figure: 214)	WTE Feb 2021	WTE Mar 2021	WTE change since Feb 21	% change since Feb 21	WTE change since Dec 20	WTE change since Mar 20
Overall	215	212	-2	-1.1%	-1	+1
Nurse/ Midwife Manager	13	13	-0	-0.1%	+0	+0
Staff Nurse/ Staff Midwife	24	24	-1	-2.1%	-3	-1
<i>Pre-registration Nurse/ Midwife Intern</i>				-100.0%		-2
Nursing/ Midwifery Student				-100.0%		-2
Nursing & Midwifery	37	37	-1	-1.4%	-3	-2
Social Care	29	28	-0	-0.3%	-2	-7
Health & Social Care Professionals	29	28	-0	-0.3%	-2	-7
Management (VIII & above)	2	2				
Administrative/ Supervisory (V to VII)	3	3				
Clerical (III & IV)	6	6	+0	+0.6%	+0	+0
Management & Administrative	11	11	+0	+0.4%	+0	+0
Support	6	5	-1	-14.7%	-1	+1
Maintenance/ Technical	1	1				
General Support	8	7	-1	-12.0%	-1	+1
Health Care Assistants	86	85	-1	-0.9%	+5	+14
Care, other	45	44	-0	-0.2%	-0	-5
Patient & Client Care	130	129	-1	-0.7%	+5	+9

Central Remedial Clinic

Mar 2021 (Dec 2020 figure: 296)	WTE Feb 2021	WTE Mar 2021	WTE change since Feb 21	% change since Feb 21	WTE change since Dec 20	WTE change since Mar 20
Overall	298	298	+0	+0.1%	+2	+14
Consultants	1	1				
Medical/ Dental, other	0	0				
Medical & Dental	2	2				
Nurse/ Midwife Manager	2	2				
Nurse/ Midwife Specialist & AN/MP	2	2				+1
Staff Nurse/ Staff Midwife	4	4			-1	
Nursing/ Midwifery other	1	1				+1
Nursing & Midwifery	8	8			-1	+2
Therapy Professions	78	78			+0	-0
Health Science/ Diagnostics	14	14			+1	+1
Social Workers	9	9			+1	+1
Psychologists	13	13				+2
Health & Social Care Professionals	114	114			+2	+4
Management (VIII & above)	7	7				
Administrative/ Supervisory (V to VII)	14	14			-1	-1
Clerical (III & IV)	34	34				+2
Management & Administrative	56	56			-1	+1
Support	13	13			+1	-2
Maintenance/ Technical	2	2				+1
General Support	15	15			+1	-1
Health Care Assistants	58	57	-1	-0.9%	-1	+1
Care, other	45	46	+1	+1.5%	+2	+7
Patient & Client Care	103	103	+0	+0.2%	+1	+8

Mar 2021 (Dec 2020 figure: 395)	WTE Feb 2021	WTE Mar 2021	WTE change since Feb 21	% change since Feb 21	WTE change since Dec 20	WTE change since Mar 20
Overall	395	394	-1	-0.1%	-1	-4
Consultants	0	0				
Medical/ Dental, other	1	1				
Medical & Dental	1	1				
Nurse/ Midwife Manager	25	28	+3	+12.0%	+1	+1
Nurse/ Midwife Specialist & AN/MP	2	2				
Staff Nurse/ Staff Midwife	107	104	-3	-2.8%	-2	-0
Nursing & Midwifery	134	134			-1	+1
Therapy Professions	13	13				+2
Social Care	37	38	+1	+2.7%	+4	+2
Social Workers	5	5			+1	-1
Psychologists	3	3			-2	-2
Pharmacy	0	0				
H&SC, Other	2	2				
Health & Social Care Professionals	60	61	+1	+1.7%	+3	+2
Management (VIII & above)	3	3				+2
Administrative/ Supervisory (V to VII)	14	15	+1	+7.3%	-0	+1
Clerical (III & IV)	12	11	-1	-8.1%	-1	-1
Management & Administrative	29	29			-1	+2
Support	27	27	-0	-0.3%	-0	-1
Maintenance/ Technical	4	4				
General Support	30	30	-0	-0.3%	-0	-1
Health Care Assistants	128	126	-2	-1.2%	-3	-8
Care, other	12	12			+2	+0
Patient & Client Care	140	138	-1	-1.1%	-1	-7

Children's Sunshine Home

Mar 2021 (Dec 2020 figure: 56)	WTE Feb 2021	WTE Mar 2021	WTE change since Feb 21	% change since Feb 21	WTE change since Dec 20	WTE change since Mar 20
Overall	57	57			+1	-1
Nurse/ Midwife Manager	8	8				
Staff Nurse/ Staff Midwife	18	18				-1
Nursing & Midwifery	26	26				-1
Therapy Professions	2	2			+1	-0
Social Workers				-100.0%	-1	-1
Health & Social Care Professionals	2	2			-0	-1
Management (VIII & above)	3	3			+1	
Administrative/ Supervisory (V to VII)	4	4				
General Administrative (III & IV)	1	1				
Clerical (III & IV)	1	1				
Management & Administrative	8	8			+1	
Support	3	3				
General Support	3	3				
Health Care Assistants	13	13				-1
Care, other	5	5				+2
Patient & Client Care	18	18				+1

Mar 2021 (Dec 2020 figure: 1,147)	WTE Feb 2021	WTE Mar 2021	WTE change since Feb 21	% change since Feb 21	WTE change since Dec 20	WTE change since Mar 20
Overall	1,146	1,152	+6	+0.5%	+5	+54
Nurse/ Midwife Manager	42	42				+1
Nurse/ Midwife Specialist & AN/MP	11	11				+1
Staff Nurse/ Staff Midwife	180	180			+3	+10
Pre-registration Nurse/ Midwife Intern	8	8			+2	+2
Pre-registration Nurse Intern (COVID-19)				-100.0%		
Nursing/ Midwifery Student	8	8			+0	+2
Nursing/ Midwifery other				-100.0%		-1
Nursing & Midwifery	241	241			+3	+14
Therapy Professions	37	37				-1
Social Care	43	43				+11
Social Workers	9	9				
Psychologists	11	11				+0
H&SC, Other	3	3				
Health & Social Care Professionals	102	102	-0	-0.0%	-0	+11
Management (VIII & above)	7	7				+1
Administrative/ Supervisory (V to VII)	23	23				+4
Clerical (III & IV)	26	26				+2
Management & Administrative	55	55				+7
Support	78	78				+1
Maintenance/ Technical	7	7			+0	+1
General Support	85	85				+2
Health Care Assistants	583	589	+6	+1.0%	+2	+19
Care, other	81	81				+1
Patient & Client Care	663	669	+6	+0.9%	+2	+20

Daughters of Charity, Dublin

Mar 2021 (Dec 2020 figure: 1,063)	WTE Feb 2021	WTE Mar 2021	WTE change since Feb 21	% change since Feb 21	WTE change since Dec 20	WTE change since Mar 20
Overall	1,075	1,075	-1	-0.1%	+11	+24
Consultants	2	2			-0	+0
Medical/ Dental, other	2	2				
Medical & Dental	4	4			-0	+0
Nurse/ Midwife Manager	63	63			+1	+1
Nurse/ Midwife Specialist & AN/MP	12	12	-1	-7.2%	+1	+3
Staff Nurse/ Staff Midwife	187	186	-2	-0.9%	-3	+1
Pre-registration Nurse/ Midwife Intern	10	11	+1	+10.5%	+3	+3
Pre-registration Nurse Intern (COVID-19)				-100.0%		
Nursing/ Midwifery Student	10	11	+1	+10.5%	+1	+3
Nursing/ Midwifery other	4	4				
Nursing & Midwifery	277	275	-2	-0.6%	+1	+8
Therapy Professions	36	35	-2	-4.1%	+3	+0
Social Care	177	183	+6	+3.2%	+10	+15
Social Workers	13	13			-0	+1
Psychologists	11	12	+1	+8.8%	+1	+3
Pharmacy	2	2				
H&SC, Other	5	4	-1	-20.3%	-1	-1
Health & Social Care Professionals	245	249	+4	+1.7%	+14	+19
Management (VIII & above)	9	9				+3
Administrative/ Supervisory (V to VII)	28	28			+1	+1
Clerical (III & IV)	31	31			-1	-1
Management & Administrative	68	68			+0	+3
Support	77	77			+1	-2
Maintenance/ Technical	7	7			-1	-1
General Support	84	84			+0	-3
Health Care Assistants	368	365	-3	-0.9%	-2	-3
Care, other	30	30			-1	+0
Patient & Client Care	398	395	-3	-0.8%	-3	-3

Daughters of Charity, Limerick

Mar 2021 (Dec 2020 figure: 549)	WTE Feb 2021	WTE Mar 2021	WTE change since Feb 21	% change since Feb 21	WTE change since Dec 20	WTE change since Mar 20
Overall	550	553	+4	+0.7%	+4	+10
Medical/ Dental, other	1	1				
Medical & Dental	1	1				
Nurse/ Midwife Manager	33	35	+2	+6.0%	+3	
Nurse/ Midwife Specialist & AN/MP	5	5	+0	+0.2%	-1	-2
Staff Nurse/ Staff Midwife	153	151	-3	-1.7%	-2	+8
<i>Pre-registration Nurse/ Midwife Intern</i>	8	8			-4	-4
<i>Pre-registration Nurse Intern (COVID-19)</i>				-100.0%		
Nursing/ Midwifery Student	8	8			+8	-4
Nursing/ Midwifery other	3	3				
Nursing & Midwifery	203	202	-1	-0.3%	+8	+2
Therapy Professions	15	15			-1	
Social Care	65	68	+3	+4.3%	+1	+12
Social Workers	5	5				-0
Psychologists	7	6	-1	-14.3%	-1	+1
H&SC, Other	6	6	+0	+6.5%	+0	+0
Health & Social Care Professionals	98	100	+2	+2.2%	-0	+13
Management (VIII & above)	2	2				
Administrative/ Supervisory (V to VII)	11	11				
Clerical (III & IV)	13	14	+0	+2.0%	-0	-0
Management & Administrative	26	27	+0	+1.0%	-0	-0
Support	42	42			-1	-2
Maintenance/ Technical	4	4				
General Support	47	47			-1	-2
Health Care Assistants	152	154	+2	+1.5%	-2	-4
Care, other	23	23	-1	-2.5%	-1	+0
Patient & Client Care	175	177	+2	+1.0%	-3	-3

Daughters of Charity, Roscrea

Mar 2021 (Dec 2020 figure: 289)	WTE Feb 2021	WTE Mar 2021	WTE change since Feb 21	% change since Feb 21	WTE change since Dec 20	WTE change since Mar 20
Overall	290	291	+1	+0.4%	+2	+2
Nurse/ Midwife Manager	14	14	-0	-0.0%	-1	-1
Staff Nurse/ Staff Midwife	18	19	+2	+8.5%	+1	+1
Nursing/ Midwifery other	1	1				
Nursing & Midwifery	32	34	+2	+4.7%	-1	-0
Therapy Professions	2	2				
Social Care	26	25	-1	-3.8%	+0	+5
Social Workers	1	1				
Psychologists	1	1				
Health & Social Care Professionals	30	29	-1	-3.3%	+0	+5
Management (VIII & above)	1	1				
Administrative/ Supervisory (V to VII)	7	7			-1	
Clerical (III & IV)	7	7			+1	+0
Management & Administrative	15	15			-0	+0
Support	4	4				
Maintenance/ Technical	5	5				-1
General Support	9	9				-1
Health Care Assistants	202	203	+1	+0.3%	+3	+1
Care, other	2	2				-3
Patient & Client Care	204	204	+1	+0.3%	+3	-2

Mar 2021 (Dec 2020 figure: 267)	WTE Feb 2021	WTE Mar 2021	WTE change since Feb 21	% change since Feb 21	WTE change since Dec 20	WTE change since Mar 20
Overall	269	271	+2	+0.8%	+4	+44
Consultants	2	2				+0
Registrars	2	2				
SHO/ Interns	4	4				
Medical & Dental	8	8				+0
Nurse/ Midwife Manager	18	18				+1
Staff Nurse/ Staff Midwife	70	70				+9
Nursing & Midwifery	88	88				+10
Therapy Professions	35	37	+2	+6.4%	+3	+14
Health Science/ Diagnostics	1	1				
Social Workers	9	9				+3
Pharmacy	4	4				+1
Health & Social Care Professionals	48	51	+2	+4.6%	+3	+18
Management (VIII & above)	2	2				+1
Administrative/ Supervisory (V to VII)	7	7			+1	+1
Clerical (III & IV)	10	10				-1
Management & Administrative	19	19			+1	+1
Support	40	40				+2
Maintenance/ Technical	2	2				
General Support	42	42				+2
Health Care Assistants	64	64				+12
Care, other	0	0				
Patient & Client Care	64	64				+12

Kare, Newbridge, Co Kildare

Mar 2021 (Dec 2020 figure: 377)	WTE Feb 2021	WTE Mar 2021	WTE change since Feb 21	% change since Feb 21	WTE change since Dec 20	WTE change since Mar 20
Overall	380	374	-5	-1.4%	-3	+15
Nurse/ Midwife Manager	7	8	+1	+11.9%	+1	-2
Staff Nurse/ Staff Midwife	24	24	+0	+1.0%	-1	+1
Nursing & Midwifery	31	32	+1	+3.6%	-0	-1
Therapy Professions	13	12	-0	-3.3%	-0	-1
Social Care	68	69	+0	+0.7%	+1	+7
Social Workers	4	4				-0
Psychologists	7	7	+0	+1.3%	-0	+1
Health & Social Care Professionals	91	92	+0	+0.2%	-0	+7
Management (VIII & above)	6	6				
Administrative/ Supervisory (V to VII)	13	12	-1	-11.2%	-1	-1
Clerical (III & IV)	13	13			-1	+1
Management & Administrative	33	31	-1	-4.6%	-2	-0
Support	1	1			-0	-0
General Support	1	1			-0	-0
Health Care Assistants	108	102	-6	-5.8%	-4	+3
Care, other	115	116	+1	+0.9%	+4	+7
Patient & Client Care	223	218	-5	-2.3%	+0	+10

Leopardstown Park Hospital

Mar 2021 (Dec 2020 figure: 207)	WTE Feb 2021	WTE Mar 2021	WTE change since Feb 21	% change since Feb 21	WTE change since Dec 20	WTE change since Mar 20
Overall	203	201	-3	-1.4%	-6	-10
Medical/ Dental, other	1		-1	-100.0%	-1	-1
Medical & Dental	1		-1	-100.0%	-1	-1
Nurse/ Midwife Manager	13	13	-0	-0.4%	-1	-2
Staff Nurse/ Staff Midwife	39	37	-2	-6.3%	-6	-7
Nursing & Midwifery	52	49	-3	-4.8%	-7	-8
Therapy Professions	9	10	+1	+6.8%	+1	+3
Social Workers	1	1				
Pharmacy	2	2	+0	+29.9%	+0	+0
Health & Social Care Professionals	12	13	+1	+9.2%	+1	+3
Management (VIII & above)	1	1				
Administrative/ Supervisory (V to VII)	7	7			-0	-0
Clerical (III & IV)	11	11			-0	+1
Management & Administrative	19	19			-1	+1
Support	34	33	-1	-2.6%	-1	-1
Maintenance/ Technical	4	4				
General Support	38	37	-1	-2.3%	-1	-1
Health Care Assistants	79	79	+1	+0.6%	+2	-3
Care, other	3	3			-0	-0
Patient & Client Care	82	82	+1	+0.6%	+2	-4

Muiriosa Foundation, Laois/Offaly

Mar 2021 (Dec 2020 figure: 320)	WTE Feb 2021	WTE Mar 2021	WTE change since Feb 21	% change since Feb 21	WTE change since Dec 20	WTE change since Mar 20
Overall	335	335	-0	-0.1%	+14	+35
Nurse/ Midwife Manager	18	18	-0	-2.5%	+1	+2
Staff Nurse/ Staff Midwife	32	29	-3	-9.2%	+1	+0
Nursing & Midwifery	50	47	-3	-6.8%	+1	+2
Social Care	110	104	-6	-5.1%	-1	+9
Social Workers	3	3				-0
Psychologists	1	1				
H&SC, Other	1	1				
Health & Social Care Professionals	115	109	-6	-4.9%	-1	+8
Management (VIII & above)	3	3				+2
Administrative/ Supervisory (V to VII)	5	5			+0	+0
Clerical (III & IV)	11	11	+0	+1.5%	-0	+1
Management & Administrative	19	19	+0	+0.9%	-0	+3
Support	1	1	-0	-7.5%	-0	+0
Maintenance/ Technical	2	2				
General Support	3	3	-0	-2.9%	-0	+0
Health Care Assistants	120	128	+8	+6.3%	+14	+23
Care, other	27	28	+1	+3.7%	+0	-1
Patient & Client Care	147	156	+9	+5.8%	+14	+22

Muiriosa Foundation, Longford/Westmeath

Mar 2021 (Dec 2020 figure: 284)	WTE Feb 2021	WTE Mar 2021	WTE change since Feb 21	% change since Feb 21	WTE change since Dec 20	WTE change since Mar 20
Overall	287	292	+5	+1.9%	+8	+23
Nurse/ Midwife Manager	9	9	+0	+0.1%	-0	-0
Staff Nurse/ Staff Midwife	4	4			-0	-0
Nursing & Midwifery	13	13	+0	+0.1%	-1	-1
Therapy Professions	3	3				
Social Care	99	101	+1	+1.3%	+1	+4
Social Workers	4	4	-0	-1.6%	+0	+1
Psychologists	2	2	-0	-1.0%	+0	+0
H&SC, Other	2	3	+1	+22.0%	+1	+0
Health & Social Care Professionals	111	112	+2	+1.6%	+2	+5
Senior Management (VIII & GM)	1	1			+1	+1
Management (VIII & above)	1	1			+1	+1
Administrative/ Supervisory (V to VII)	4	4	+1	+13.2%	+1	-1
Clerical (III & IV)	10	10	-0	-0.1%	+0	-0
Management & Administrative	15	16	+0	+3.2%	+1	+0
Support	1	1				
Maintenance/ Technical	3	3				
General Support	4	4				
Health Care Assistants	128	132	+3	+2.6%	+6	+20
Care, other	15	15	-0	-0.5%	-0	-2
Patient & Client Care	144	147	+3	+2.2%	+5	+19

Mar 2021 (Dec 2020 figure: 342)	WTE Feb 2021	WTE Mar 2021	WTE change since Feb 21	% change since Feb 21	WTE change since Dec 20	WTE change since Mar 20
Overall	342	343	+1	+0.4%	+1	+13
Nurse/ Midwife Manager	13	14	+1	+6.9%	+1	-2
Nurse/ Midwife Specialist & AN/MP	2	2	+0	+0.6%	+0	+0
Staff Nurse/ Staff Midwife	21	20	-1	-3.5%	-2	-3
<i>Pre-registration Nurse/ Midwife Intern</i>	6	6	-0	-2.9%	+6	+1
Nursing/ Midwifery Student	6	6	-0	-2.9%	+6	+1
Nursing/ Midwifery other	6	6	+0	+0.2%	-1	-1
Nursing & Midwifery	48	48	+0	+0.1%	+4	-5
Therapy Professions	8	8	-1	-6.6%	-1	-1
Social Care	92	95	+2	+2.6%	+1	+6
Social Workers	3	3				+0
Psychologists	2	2				+0
H&SC, Other	3	3				
Health & Social Care Professionals	108	109	+2	+1.8%	-0	+5
Management (VIII & above)	4	4				+1
Administrative/ Supervisory (V to VII)	12	12			-1	-2
Clerical (III & IV)	13	13			+0	-1
Management & Administrative	29	29			-0	-2
Support	13	13	-0	-2.1%	-1	-1
Maintenance/ Technical	4	4				-1
General Support	17	17	-0	-1.6%	-1	-2
Health Care Assistants	131	130	-1	-0.5%	-2	+15
Care, other	9	9	+0	+2.8%	+0	+1
Patient & Client Care	140	140	-0	-0.2%	-2	+16

Peamount Hospital (Newcastle)

Mar 2021 (Dec 2020 figure: 483)	WTE Feb 2021	WTE Mar 2021	WTE change since Feb 21	% change since Feb 21	WTE change since Dec 20	WTE change since Mar 20
Overall	475	475	+0	+0.0%	-7	-18
Registrars	2	2	+0	+3.0%	+0	+0
SHO/ Interns	7	8	+1	+13.6%	+1	+1
Medical & Dental	9	10	+1	+11.2%	+1	+1
Nurse/ Midwife Manager	31	33	+3	+8.1%	+5	+6
Nurse/ Midwife Specialist & AN/MP	2	2				+0
Staff Nurse/ Staff Midwife	73	73	+1	+0.8%	-2	-11
Nursing/ Midwifery other	1	1				+1
Nursing & Midwifery	106	109	+3	+2.9%	+3	-4
Therapy Professions	29	29	-0	-1.5%	+0	-5
Health Science/ Diagnostics	3	4	+1	+20.0%	+1	+1
Social Care	3	3	-0	-6.0%	-1	-1
Social Workers	6	6	+0	+4.5%	+1	+1
Pharmacy	4	4	+0	+0.8%	+0	-0
Health & Social Care Professionals	45	46	+0	+0.6%	+1	-4
Management (VIII & above)	4	4				
Administrative/ Supervisory (V to VII)	17	18	+1	+3.0%	+1	+3
Clerical (III & IV)	19	20	+1	+5.5%	+0	-1
Management & Administrative	40	42	+2	+3.9%	+1	+2
Support	42	38	-4	-10.5%	-6	-9
Maintenance/ Technical	8	9	+1	+14.4%		+1
General Support	50	47	-3	-6.6%	-6	-8
Health Care Assistants	221	221	-0	-0.1%	-6	-3
Care, other	3	1	-2	-70.1%	-2	-2
Patient & Client Care	224	222	-3	-1.1%	-8	-5

Mar 2021 (Dec 2020 figure: 268)	WTE Feb 2021	WTE Mar 2021	WTE change since Feb 21	% change since Feb 21	WTE change since Dec 20	WTE change since Mar 20
Overall	269	269	+0	+0.1%	+1	-6
Registrars	2	2			+1	+1
Medical/ Dental, other	1	1				
Medical & Dental	3	3			+1	+1
Nurse/ Midwife Manager	16	17	+1	+6.1%	-0	-3
Staff Nurse/ Staff Midwife	75	75			+1	-2
Nursing & Midwifery	91	92	+1	+1.1%	+1	-5
Therapy Professions	30	30	-1	-2.7%	+0	+0
Social Workers	6	6				
Psychologists	1	1				
Health & Social Care Professionals	36	36	-1	-2.2%	+0	+0
Management (VIII & above)	1	1				+1
Administrative/ Supervisory (V to VII)	7	8	+1	+14.6%	+3	+2
Clerical (III & IV)	8	8			-1	
Management & Administrative	16	17	+1	+6.2%	+2	+3
Support	34	33	-1	-3.0%	-1	-1
Maintenance/ Technical	4	4			-1	-1
General Support	38	37	-1	-2.7%	-2	-2
Health Care Assistants	84	84			-1	-3
Care, other	1	1			-1	-1
Patient & Client Care	85	85			-2	-4

Stewart's Hospital, (Palmerstown)

Mar 2021 (Dec 2020 figure: 914)	WTE Feb 2021	WTE Mar 2021	WTE change since Feb 21	% change since Feb 21	WTE change since Dec 20	WTE change since Mar 20
Overall	915	921	+7	+0.7%	+8	+64
Consultants	0	0				
Medical & Dental	0	0				
Nurse/ Midwife Manager	34	33	-1	-2.9%	+2	+1
Staff Nurse/ Staff Midwife	84	82	-2	-2.4%	+1	+9
<i>Pre-registration Nurse/ Midwife Intern</i>	7	8	+1	+7.1%	+8	
Nursing/ Midwifery Student	7	8	+1	+7.1%	+8	
Nursing/ Midwifery other	1	2	+1	+200.0%	+1	+1
Nursing & Midwifery	125	124	-2	-1.2%	+11	+11
Therapy Professions	18	19	+1	+5.7%	-1	+2
Social Care	13	12	-1	-7.7%	-1	
Social Workers	6	6				-1
Psychologists	4	4				-1
Health & Social Care Professionals	40	40	+0	+0.0%	-1	+1
Management (VIII & above)	17	18	+1	+7.0%	+2	+7
Administrative/ Supervisory (V to VII)	18	18	+0	+1.0%	+1	+2
Clerical (III & IV)	24	24				+2
Management & Administrative	59	60	+1	+2.3%	+3	+11
Support	53	53	+0	+0.2%	-1	-2
Maintenance/ Technical	6	6				+1
General Support	59	59	+0	+0.2%	-1	-1
Health Care Assistants	509	515	+6	+1.1%	-5	+36
Care, other	122	123	+1	+0.7%	+1	+6
Patient & Client Care	631	638	+7	+1.0%	-4	+42

Mar 2021 (Dec 2020 figure: 648)	WTE Feb 2021	WTE Mar 2021	WTE change since Feb 21	% change since Feb 21	WTE change since Dec 20	WTE change since Mar 20
Overall	646	646			-2	+15
Registrars	1	1				
Medical & Dental	1	1				
Nurse/ Midwife Manager	45	45			-2	+1
Nurse/ Midwife Specialist & AN/MP	3	3			-0	-1
Staff Nurse/ Staff Midwife	166	166			+13	+19
<i>Pre-registration Nurse/ Midwife Intern</i>				-100.0%		-9
<i>Pre-registration Nurse Intern (COVID-19)</i>				-100.0%		
Nursing/ Midwifery Student				-100.0%	-4	-9
<i>Nursing Education/Clinical</i>	1	1			+1	+1
Nursing/ Midwifery other	1	1			+1	+1
Nursing & Midwifery	214	214	-0	-0.0%	+8	+12
Therapy Professions	3	3				+1
Social Care	71	71			-5	-4
Social Workers	2	2				
Psychologists	1	1				
Health & Social Care Professionals	77	77	+0	+0.0%	-5	-4
Management (VIII & above)	1	1			+0	+0
Administrative/ Supervisory (V to VII)	6	6			+0	+0
Clerical (III & IV)	12	12			+0	+0
Management & Administrative	18	18			+0	+0
Support	20	20			+0	-1
Maintenance/ Technical	2	2			-1	-1
General Support	22	22			-1	-2
Health Care Assistants	282	282			-5	+11
Care, other	33	33			+0	-2
Patient & Client Care	315	315	-0	-0.0%	-5	+9

St. John of God (IDS)

Mar 2021 (Dec 2020 figure: 468)	WTE Feb 2021	WTE Mar 2021	WTE change since Feb 21	% change since Feb 21	WTE change since Dec 20	WTE change since Mar 20
Overall	459	458	-0	-0.1%	-9	+6
Medical & Dental	1	1				
Nurse/ Midwife Manager	9	9	-0	-1.5%	+1	+1
Staff Nurse/ Staff Midwife	50	51	+1	+2.6%	+2	+4
Nursing & Midwifery	58	60	+1	+2.0%	+3	+5
Therapy Professions	13	13	-0	-0.2%	-0	+2
Social Care	156	154	-1	-0.9%	-5	+2
Social Workers	3	3				
Psychologists	7	7	+0	+0.1%	+1	+1
Health & Social Care Professionals	179	178	-1	-0.8%	-4	+5
Management (VIII & above)	14	14	+0	+1.7%	-0	+0
Administrative/ Supervisory (V to VII)	27	27	+0	+1.2%	+0	-1
Clerical (III & IV)	18	18	-0	-0.2%	-0	-0
Management & Administrative	59	60	+1	+0.9%	-0	-2
Support	12	12	-0	-2.3%	-1	-0
Maintenance/ Technical	5	5				
General Support	17	17	-0	-1.6%	-1	-0
Health Care Assistants	18	19	+0	+1.6%	+1	+2
Care, other	126	125	-1	-0.5%	-8	-5
Patient & Client Care	144	144	-0	-0.2%	-7	-2

St. John of God, Kerry

Mar 2021 (Dec 2020 figure: 320)	WTE Feb 2021	WTE Mar 2021	WTE change since Feb 21	% change since Feb 21	WTE change since Dec 20	WTE change since Mar 20
Overall	321	326	+5	+1.6%	+6	+17
Nurse/ Midwife Manager	15	15	+0	+3.3%	+0	+1
Staff Nurse/ Staff Midwife	47	48	+1	+3.0%	+1	+2
Nursing & Midwifery	62	64	+2	+3.0%	+2	+2
Therapy Professions	4	4			+0	+1
Social Care	45	46	+1	+1.4%	-0	+0
Social Workers	1	1				
Psychologists	1	1	+0	+3.0%	+0	+0
Health & Social Care Professionals	51	52	+1	+1.3%	-0	+1
Management (VIII & above)	1	1				
Administrative/ Supervisory (V to VII)	6	6	+0	+0.9%	-1	-1
Clerical (III & IV)	9	9	-0	-0.8%	+0	-1
Management & Administrative	17	17	-0	-0.1%	-1	-2
General Support	30	30	-0	-0.6%	+0	+0
Health Care Assistants	117	117	-0	-0.0%	+3	+11
Care, other	45	48	+3	+5.9%	+2	+4
Patient & Client Care	162	165	+3	+1.6%	+5	+15

Mar 2021 (Dec 2020 figure: 801)	WTE Feb 2021	WTE Mar 2021	WTE change since Feb 21	% change since Feb 21	WTE change since Dec 20	WTE change since Mar 20
Overall	782	778	-4	-0.5%	-22	+16
Registrars	1	1				
Medical & Dental	1	1				
Nurse/ Midwife Manager	20	20	-0	-0.3%	-2	-4
Nurse/ Midwife Specialist & AN/MP	1	1				
Staff Nurse/ Staff Midwife	90	92	+2	+1.8%	+1	+2
Nursing & Midwifery	111	113	+2	+1.4%	-1	-1
Therapy Professions	10	11	+1	+6.0%	-2	-3
Social Care	264	264	+0	+0.1%	-5	+17
Social Workers	6	6	+0	+0.5%	-0	-1
Psychologists	7	6	-1	-11.3%	-0	+0
Health & Social Care Professionals	287	287	+0	+0.0%	-8	+12
Management (VIII & above)	6	5	-1	-8.4%	+0	-1
Administrative/ Supervisory (V to VII)	10	10	-1	-7.7%	-2	-1
Clerical (III & IV)	20	19	-1	-4.1%	+1	+1
Management & Administrative	36	34	-2	-5.8%	-1	-1
Support	26	29	+3	+10.7%	+1	-2
Maintenance/ Technical	14	14	-0	-0.7%	-0	-0
General Support	41	43	+3	+6.7%	+1	-2
Health Care Assistants	159	160	+1	+0.6%	-5	+4
Care, other	147	140	-7	-4.7%	-9	+4
Patient & Client Care	307	301	-6	-2.0%	-14	+8

Mar 2021 (Dec 2020 figure: 1,453)	WTE Feb 2021	WTE Mar 2021	WTE change since Feb 21	% change since Feb 21	WTE change since Dec 20	WTE change since Mar 20
Overall	1,428	1,426	-2	-0.2%	-27	+2
Consultants	6	5	-1	-16.0%	-1	-1
Registrars	1	1				-2
Medical/ Dental, other	4	4				
Medical & Dental	11	10	-1	-9.1%	-1	-3
Nurse/ Midwife Manager	87	86	-1	-1.3%	-2	-1
Staff Nurse/ Staff Midwife	168	166	-2	-1.3%	+1	+10
Nursing & Midwifery	255	251	-3	-1.3%	-1	+8
Therapy Professions	51	50	-1	-1.1%	+4	-2
Social Care	572	574	+3	+0.4%	+9	+42
Social Workers	20	20	+0	+1.4%	-2	-1
Psychologists	22	22	-0	-2.0%	-1	+1
H&SC, Other	9	9	+1	+7.6%	+1	-1
Health & Social Care Professionals	673	676	+2	+0.4%	+11	+38
Management (VIII & above)	21	21			+0	
Administrative/ Supervisory (V to VII)	50	50	+0	+0.1%	+4	+9
Clerical (III & IV)	45	47	+1	+3.0%	-7	-8
Management & Administrative	116	118	+1	+1.2%	-2	+1
Support	46	46	+0	+0.4%	-2	-50
Maintenance/ Technical	12	12				
General Support	58	58	+0	+0.3%	-2	-50
Health Care Assistants	292	291	-2	-0.6%	-31	+10
Care, other	23	22	-0	-1.9%	-2	-3
Patient & Client Care	315	313	-2	-0.7%	-33	+8

St. Patrick's, Kilkenny

Mar 2021 (Dec 2020 figure: 287)	WTE Feb 2021	WTE Mar 2021	WTE change since Feb 21	% change since Feb 21	WTE change since Dec 20	WTE change since Mar 20
Overall	284	284	-1	-0.3%	-3	+6
Nurse/ Midwife Manager	12	12	-0	-0.5%	+0	-1
Staff Nurse/ Staff Midwife	26	25	-0	-0.5%	-1	-1
Pre-registration Nurse/ Midwife Intern	1	1			+1	+1
Nursing/ Midwifery Student	1	1			+1	+1
Nursing & Midwifery	39	38	-0	-0.5%	-0	-1
Social Care	28	28	+0	+1.0%	-0	-0
Social Workers	1	1			-0	+0
H&SC, Other	2	2	+0	+0.6%	-0	-1
Health & Social Care Professionals	31	31	+0	+0.9%	-1	-1
Executive Management	1	1			+1	
Management (VIII & above)	1	1				
Administrative/ Supervisory (V to VII)	6	6	+0	+0.5%	+0	+0
Clerical (III & IV)	12	12	+0	+3.7%	+0	-0
Management & Administrative	19	20	+0	+2.5%	+0	+0
Support	1	1	-0	-11.1%	-1	-2
Maintenance/ Technical	2	2			-1	-1
General Support	3	3	-0	-3.2%	-2	-3
Patient & Client Care	193	192	-1	-0.6%	-1	+11

Sunbeam House Services

Mar 2021 (Dec 2020 figure: 450)	WTE Feb 2021	WTE Mar 2021	WTE change since Feb 21	% change since Feb 21	WTE change since Dec 20	WTE change since Mar 20
Overall	468	451	-17	-3.7%	+1	+21
Nurse/ Midwife Manager	4	4				+1
Staff Nurse/ Staff Midwife	33	32	-1	-4.1%	-0	-1
Nursing & Midwifery	37	36	-1	-3.6%	-0	+0
Therapy Professions	4	4	+0	+12.7%	+2	+3
Social Care	202	197	-5	-2.5%	+3	+33
Social Workers	2	3	+1	+50.0%	+1	+2
Psychologists				-100.0%		-2
H&SC, Other				-100.0%		-1
Health & Social Care Professionals	208	204	-4	-1.8%	+5	+34
Management (VIII & above)	9	9				
Administrative/ Supervisory (V to VII)	9	9	-0	-0.6%		-1
Clerical (III & IV)	28	28	-0	-0.8%	+3	+1
Management & Administrative	46	45	-0	-0.6%	+3	+0
Support	4	4	+0	+2.1%	-3	-11
Maintenance/ Technical				-100.0%		-3
General Support	4	4	+0	+2.1%	-3	-14
Health Care Assistants	73	70	-4	-5.3%	+4	+9
Care, other	100	91	-8	-8.3%	-7	-8
Patient & Client Care	173	161	-12	-7.0%	-3	+1

Bros. of Charity, West Region

Mar 2021 (Dec 2020 figure: 1,298)	WTE Feb 2021	WTE Mar 2021	WTE change since Feb 21	% change since Feb 21	WTE change since Dec 20	WTE change since Mar 20
Overall	1,287	1,292	+4	+0.3%	-6	+17
Consultants	2	2				
Registrars	2	2				-1
Medical & Dental	4	4				-1
Nurse/ Midwife Manager	69	70	+1	+1.2%	+1	+0
Nurse/ Midwife Specialist & AN/MP	5	5	-0	-0.4%	+0	-0
Staff Nurse/ Staff Midwife	121	123	+2	+1.3%	-1	+2
<i>Pre-registration Nurse Intern (COVID-19)</i>				-100.0%		
Nursing/ Midwifery Student				-100.0%	-1	
Nursing & Midwifery	195	197	+2	+1.2%	-0	+2
Therapy Professions	31	30	-1	-3.4%	+1	-5
Social Care	214	215	+1	+0.4%	+4	+20
Social Workers	27	27	+0	+0.2%	+1	+1
Psychologists	14	13	-0	-0.6%	+1	-1
H&SC, Other	11	10	-1	-7.7%	-1	-5
Health & Social Care Professionals	296	295	-1	-0.4%	+5	+10
Management (VIII & above)	13	13	-0	-0.0%		-0
Administrative/ Supervisory (V to VII)	37	36	-1	-3.3%	-1	+1
Clerical (III & IV)	37	37	-0	-0.3%	-0	-1
Management & Administrative	87	86	-1	-1.5%	-1	+0
Support	40	41	+1	+1.3%	-2	-7
Maintenance/ Technical	5	5				+0
General Support	45	46	+1	+1.2%	-2	-7
Health Care Assistants	539	543	+3	+0.6%	-5	+17
Care, other	120	120	+0	+0.3%	-2	-5
Patient & Client Care	659	663	+4	+0.6%	-8	+12

Social Care Services Employment by Grade Group: Mar 2021

Mar 2021 (Dec 2020 figure: 32,359)	WTE Feb 2021	WTE Mar 2021	WTE change since Feb 21	% change since Feb 21	WTE change since Dec 20	WTE change since Mar 20
Overall	32,302	32,368	+65	+0.2%	+9	+984
Consultant Medicine	4	4	-0	-10.9%	-1	-1
Consultant Paediatrics	3	3				
Consultant Psychiatry	20	19	-1	-4.6%	-3	-2
Consultants	27	25	-1	-5.0%	-4	-2
Registrar	13	13			+4	+2
Senior Registrar	3	3			-1	
Specialist Registrar	4	4	+0	+7.8%	+0	-1
Registrars	20	21	+0	+1.5%	+4	+1
SHO/ Interns	18	20	+2	+10.8%	-3	-0
Medical/ Dental, other	100	101	+0	+0.3%	-17	-1
Medical & Dental	165	167	+1	+0.8%	-20	-3
Clinical Nurse/ Midwife Manager	1,362	1,374	+12	+0.9%	+23	+47
Director Nursing/Midwifery, Assistant	151	150	-1	-1.0%	-2	+14
Director of Nursing/Midwifery	144	144	+0	+0.3%	+3	+2
Nurse/ Midwife Manager	1,656	1,667	+11	+0.7%	+24	+63
Advanced Nurse/ Midwife Practitioner	27	26	-0	-0.3%	+2	+13
Clinical Nurse/ Midwife Specialist	79	78	-1	-1.1%	+0	-0
Nurse/ Midwife Specialist & AN/MP	105	104	-1	-0.9%	+2	+12
Staff Midwives	1	1			+0	-0
Staff Nurse [Intellectual Disability]	1,665	1,667	+2	+0.1%	-123	+87
Staff Nurse [Psychiatric]	204	209	+5	+2.7%	+152	+131
Staff Nurses [General/ Children's]	3,375	3,360	-15	-0.5%	-9	-131
Staff Nurse/ Staff Midwife	5,245	5,237	-8	-0.1%	+20	+86
Public Health Nurse	19	23	+3	+16.4%	+2	+4
Pre-registration Nurse/ Midwife Intern	75	81	+5	+7.1%	+78	+2
Pre-registration Nurse Intern (COVID-19)	10		-10	-100.0%	-32	
Post-registration Nurse/ Midwife Student				-100.0%		-1
Nursing/ Midwifery awaiting registration	14	15	+0	+1.6%	+0	-1
Nursing/ Midwifery Student	99	95	-4	-4.0%	+47	-0
Nursing Education/Clinical	28	28	+0	+0.0%	+1	+4
Other Nursing/ Midwifery	1	2	+1	+100.0%	+1	+1
Nursing/ Midwifery other	29	30	+1	+3.4%	+2	+5
Nursing & Midwifery	7,154	7,156	+3	+0.0%	+97	+171
Dietitians	37	41	+4	+10.9%	+7	+7
Occupational Therapists	412	413	+1	+0.2%	+21	+35
Physiotherapists	332	336	+3	+1.0%	+11	+18
Podiatrists & Chiropodists	15	15	+1	+4.3%	+3	+4
Speech & Language Therapists	322	328	+6	+1.8%	+1	+13
Therapy Professions	1,118	1,133	+15	+1.3%	+42	+77
Clinical Engineering	14	14			+1	+3
Clinical Measurement	2	3	+1	+30.0%	+0	+1
Medical Science	4	4				
Phlebotomists				-100.0%		-1
Radiographers	6	6	+0	+1.5%	+0	+0
Health Science/ Diagnostics	26	27	+1	+2.7%	+2	+4
Social Care	2,799	2,805	+6	+0.2%	+13	+205
Social Workers	331	335	+4	+1.1%	+7	+16
Psychologists	234	235	+1	+0.3%	+4	+18

Mar 2021 (Dec 2020 figure: 32,359)	WTE Feb 2021	WTE Mar 2021	WTE change since Feb 21	% change since Feb 21	WTE change since Dec 20	WTE change since Mar 20
Overall	32,302	32,368	+65	+0.2%	+9	+984
Pharmacy	24	25	+0	+1.9%	+1	+0
Counsellor Therapists	21	21	+0	+1.6%	+1	+2
Other Health & Social Care	45	44	-1	-2.3%	-2	-8
Play Therapists/ Specialists	12	12	-0	-2.8%	+0	-4
H&SC, Other	78	77	-1	-1.4%	-1	-10
Health & Social Care Professionals	4,610	4,635	+25	+0.5%	+68	+311
Executive Management	52	55	+3	+5.9%	+5	+12
Senior Management (VIII & GM)	237	238	+0	+0.1%	+6	+23
Management (VIII & above)	290	293	+3	+1.1%	+10	+35
Middle Management (V-VII)	711	730	+18	+2.6%	+43	+87
Other Administrative	15	14	-1	-5.5%	-2	-4
Administrative/ Supervisory (V to VII)	726	744	+18	+2.4%	+41	+83
Clerical (III & IV)	1,268	1,293	+25	+2.0%	+21	+49
Management & Administrative	2,284	2,330	+46	+2.0%	+72	+168
Catering	310	308	-2	-0.5%	-4	-19
Household Services	873	877	+4	+0.5%	-8	-22
Other Labs & Associated	1	1	+0	+4.0%	+0	+0
Other Support	166	164	-2	-1.1%	-1	-62
Portering	97	94	-3	-3.2%	-7	-13
Support	1,446	1,444	-2	-0.2%	-20	-116
Maintenance	208	208	-0	-0.0%	-8	-10
Technical Services	15	15			+4	+7
Maintenance/ Technical	223	223	-0	-0.0%	-4	-3
General Support	1,669	1,667	-2	-0.1%	-24	-119
HCA (Student Nurse/Midwife COVID-19)	14	12	-3	-17.8%	-10	+12
HCA, Nurse's Aide, etc.	11,132	11,144	+12	+0.1%	-16	+415
Health & Social Care Assistants	39	39	+0	+1.0%	+1	+7
Health Care Assistants	11,185	11,195	+10	+0.1%	-26	+434
Home Help	3,381	3,365	-17	-0.5%	-160	-74
Care, other	1,853	1,854	+0	+0.0%	+1	+96
Patient & Client Care	16,420	16,413	-7	-0.0%	-185	+456

Employment by WTE, Headcount, Gender, Full-Time /Part-Time etc.: Mar 2021

Social Care Services Staff Group	WTE	Headcount	WTE: no.	% Male	% female	Male WTE: no.	Female WTE: no.	% Total Perm	% Male Perm	% Female Perm	% Total Full Time	% Total Part Time	% Male FT	% Female FT
Overall	32,368	39,094	1.21	16.8%	83.2%	1.14	1.22	84.9%	84.4%	85.0%	58.2%	41.8%	74.0%	55.0%
Consultant Medicine	4	6	1.67	16.7%	83.3%	2.00	1.61	83.3%	83.3%	80.0%	16.7%	83.3%	0.0%	20.0%
Consultant Paediatrics	3	6	1.97	16.7%	83.3%	1.82	2.00	66.7%	66.7%	80.0%	33.3%	66.7%	100.0%	20.0%
Consultant Psychiatry	19	25	1.34	28.0%	72.0%	1.33	1.35	84.0%	84.0%	83.3%	56.0%	44.0%	71.4%	50.0%
Consultants	25	37	1.46	24.3%	75.7%	1.42	1.48	81.1%	77.8%	82.1%	45.9%	54.1%	66.7%	39.3%
Registrar	13	14	1.05	28.6%	71.4%	1.00	1.07	28.6%	28.6%	20.0%	85.7%	14.3%	100.0%	80.0%
Senior Registrar	3	3	1.00		100.0%		1.00	33.3%	33.3%	33.3%	100.0%	0.0%		100.0%
Specialist Registrar	4	6	1.39	50.0%	50.0%	1.00	2.29	0.0%	0.0%	0.0%	100.0%	0.0%	100.0%	100.0%
Registrars	21	23	1.12	30.4%	69.6%	1.00	1.17	21.7%	28.6%	18.8%	91.3%	8.7%	100.0%	87.5%
SHO/ Interns	20	22	1.10	31.8%	68.2%	1.16	1.08	9.1%	28.6%	0.0%	100.0%	0.0%	100.0%	100.0%
Medical/ Dental, other	101	183	1.82	62.3%	37.7%	1.91	1.68	57.9%	58.8%	56.5%	36.1%	63.9%	31.6%	43.5%
Medical & Dental	167	265	1.59	51.7%	48.3%	1.74	1.46	54.0%	56.9%	50.8%	47.5%	52.5%	40.9%	54.7%
Clinical Nurse/ Midwife Manager	1,374	1,469	1.07	10.5%	89.5%	1.02	1.08	94.1%	94.1%	94.7%	81.1%	18.9%	96.8%	79.2%
Director Nursing/Midwifery, Assistant	149	154	1.03	8.4%	91.6%	1.00	1.03	98.1%	98.1%	97.9%	92.2%	7.8%	100.0%	91.5%
Director of Nursing/Midwifery	144	147	1.02	6.1%	93.9%	1.02	1.02	97.3%	97.3%	97.1%	97.3%	2.7%	100.0%	97.1%
Nurse/ Midwife Manager	1,667	1,770	1.06	9.9%	90.1%	1.01	1.07	94.7%	90.9%	95.2%	83.4%	16.6%	97.2%	81.9%
Advanced Nurse/ Midwife Practitioner	26	27	1.02	18.5%	81.5%	1.00	1.02	100.0%	100.0%	100.0%	100.0%	0.0%	100.0%	100.0%
Clinical Nurse/ Midwife Specialist	78	88	1.13	6.8%	93.2%	1.01	1.14	97.7%	97.7%	97.6%	61.4%	38.6%	100.0%	58.5%
Nurse/ Midwife Specialist & AN/MP	104	115	1.10	9.6%	90.4%	1.01	1.12	98.3%	100.0%	98.1%	70.4%	29.6%	100.0%	67.3%
Staff Midwives	1	1	1.11		100.0%		1.11	100.0%	100.0%	100.0%	0.0%	100.0%		0.0%
Staff Nurse [Intellectual Disability]	1,667	1,932	1.16	8.2%	91.8%	1.09	1.17	94.9%	94.9%	94.9%	63.6%	36.4%	83.6%	61.8%
Staff Nurse [Psychiatric]	209	243	1.16	10.7%	89.3%	1.07	1.17	90.9%	90.9%	90.8%	67.1%	32.9%	84.6%	65.0%
Staff Nurses [General/ Children's]	3,360	3,913	1.16	8.8%	91.2%	1.06	1.18	89.6%	89.6%	89.8%	62.8%	37.2%	90.1%	60.2%
Staff Nurse/ Staff Midwife	5,237	6,089	1.16	8.7%	91.3%	1.07	1.17	91.4%	90.4%	91.5%	63.2%	36.8%	87.9%	60.9%
Public Health Nurse	23	26	1.15	3.8%	96.2%	1.00	1.16	100.0%	100.0%	100.0%	65.4%	34.6%	100.0%	64.0%
Nursing/ Midwifery Student	95	179	1.88	4.5%	95.5%	2.03	1.88	21.2%	0.0%	22.2%	70.4%	29.6%	87.5%	69.6%
Nursing Education/Clinical	28	31	1.11	3.2%	96.8%	1.00	1.11	96.8%	96.8%	96.7%	77.4%	22.6%	100.0%	76.7%
Other Nursing/ Midwifery	2	2	1.00	50.0%	50.0%	1.00	1.00	100.0%	100.0%	100.0%	100.0%	0.0%	100.0%	100.0%

Nursing/ Midwifery other	30	33	1.10	6.1%	93.9%	1.00	1.11	97.0%	100.0%	96.8%	78.8%	21.2%	100.0%	77.4%
Nursing & Midwifery	7,156	8,212	1.15	8.9%	91.1%	1.06	1.16	90.7%	89.7%	90.8%	67.9%	32.1%	90.4%	65.7%
Dietitians	41	53	1.29	3.8%	96.2%	1.00	1.30	90.6%	90.6%	90.2%	56.6%	43.4%	100.0%	54.9%
Occupational Therapists	413	468	1.13	7.9%	92.1%	1.06	1.14	88.9%	88.9%	88.2%	78.0%	22.0%	89.2%	77.0%
Physiotherapists	336	387	1.15	15.5%	84.5%	1.04	1.18	88.1%	88.1%	88.1%	70.3%	29.7%	91.7%	66.4%
Podiatrists & Chiropodists	15	20	1.31	20.0%	80.0%	1.07	1.38	45.0%	45.0%	43.8%	65.0%	35.0%	75.0%	62.5%
Speech & Language Therapists	328	380	1.16	1.6%	98.4%	1.00	1.16	92.6%	92.6%	92.5%	73.9%	26.1%	100.0%	73.5%
Therapy Professions	1,133	1,308	1.15	8.3%	91.7%	1.04	1.17	89.1%	90.8%	89.0%	73.5%	26.5%	90.8%	71.9%
Clinical Engineering	14	14	1.00	92.9%	7.1%	1.00	1.00	92.9%	92.9%	100.0%	92.9%	7.1%	92.3%	100.0%
Clinical Measurement	3	3	1.15	66.7%	33.3%	1.00	1.67	100.0%	100.0%	100.0%	100.0%	0.0%	100.0%	100.0%
Medical Science	4	4	1.00	75.0%	25.0%	1.00	1.00	75.0%	75.0%	100.0%	100.0%	0.0%	100.0%	100.0%
Radiographers	6	10	1.64	10.0%	90.0%	2.00	1.61	90.0%	90.0%	88.9%	20.0%	80.0%	0.0%	22.2%
Health Science/ Diagnostics	27	31	1.16	61.3%	38.7%	1.03	1.46	90.3%	89.5%	91.7%	71.0%	29.0%	89.5%	41.7%
Social Care	2,805	3,314	1.18	16.1%	83.9%	1.11	1.20	90.1%	92.1%	89.7%	48.9%	51.1%	63.7%	46.1%
Social Workers	335	388	1.16	16.5%	83.5%	1.06	1.18	91.8%	87.5%	92.6%	73.5%	26.5%	85.9%	71.0%
Psychologists	235	269	1.15	21.6%	78.4%	1.09	1.16	94.1%	93.1%	94.3%	73.2%	26.8%	82.8%	70.6%
Pharmacy	25	34	1.39	14.7%	85.3%	1.36	1.39	76.5%	100.0%	72.4%	50.0%	50.0%	60.0%	48.3%
Counsellor Therapists	21	25	1.19	8.0%	92.0%	1.00	1.21	96.0%	96.0%	95.7%	56.0%	44.0%	100.0%	52.2%
Other Health & Social Care	44	60	1.37	16.7%	83.3%	1.10	1.44	88.3%	88.3%	88.0%	45.0%	55.0%	80.0%	38.0%
Play Therapists/ Specialists	12	16	1.34	25.0%	75.0%	1.00	1.52	100.0%	100.0%	100.0%	50.0%	50.0%	100.0%	33.3%
H&SC, Other	77	101	1.32	15.8%	84.2%	1.06	1.38	92.1%	93.8%	91.8%	48.5%	51.5%	87.5%	41.2%
Health & Social Care	4,635	5,445	1.17	14.8%	85.2%	1.09	1.19	90.1%	91.7%	89.8%	57.9%	42.1%	71.6%	55.5%
Executive Management	55	56	1.01	42.9%	57.1%	1.00	1.02	94.6%	94.6%	96.9%	98.2%	1.8%	100.0%	96.9%
Senior Management (VIII & GM)	238	246	1.04	30.1%	69.9%	1.03	1.04	93.5%	93.5%	95.3%	95.9%	4.1%	95.9%	95.9%
Management (VIII & above)	293	302	1.03	32.5%	67.5%	1.02	1.04	93.7%	89.8%	95.6%	96.4%	3.6%	96.9%	96.1%
Middle Management (V-VII)	730	784	1.07	20.0%	80.0%	1.04	1.08	93.9%	93.9%	94.3%	78.4%	21.6%	85.4%	76.7%
Other Administrative	14	14	1.00	21.4%	78.6%	1.00	1.00	100.0%	100.0%	100.0%	100.0%	0.0%	100.0%	100.0%
Administrative/ Supervisory (V to VII)	744	798	1.07	20.1%	79.9%	1.04	1.08	94.0%	92.5%	94.4%	78.8%	21.2%	85.6%	77.1%
Clerical (III & IV)	1,293	1,534	1.19	8.9%	91.1%	1.09	1.20	86.3%	78.7%	87.1%	61.3%	38.7%	80.9%	59.4%
Management & Administrative	2,330	2,634	1.13	15.0%	85.0%	1.05	1.15	89.5%	87.1%	89.9%	70.6%	29.4%	86.8%	67.8%
Catering	308	350	1.14	32.6%	67.4%	1.06	1.18	95.1%	95.1%	97.0%	68.3%	31.7%	89.5%	58.1%
Household Services	877	1,112	1.27	16.9%	83.1%	1.22	1.28	86.5%	86.5%	88.3%	47.9%	52.1%	70.7%	43.3%
Other Labs & Associated	1	2	1.92	50.0%	50.0%	25.00	1.00	50.0%	50.0%	100.0%	100.0%	0.0%	100.0%	100.0%
Other Support	164	257	1.57	51.8%	48.2%	1.28	2.08	91.4%	91.4%	96.8%	31.9%	68.1%	50.4%	12.1%
Portering	94	103	1.10	98.1%	1.9%	1.10	1.30	86.4%	86.4%	100.0%	81.6%	18.4%	82.2%	50.0%

Support	1,444	1,824	1.26	29.4%	70.6%	1.17	1.31	88.8%	84.2%	90.8%	51.5%	48.5%	71.9%	43.0%
Maintenance	208	224	1.08	95.5%	4.5%	1.07	1.29	92.9%	92.9%	100.0%	83.0%	17.0%	85.5%	30.0%
Technical Services	15	15	0.99	80.0%	20.0%	0.99	1.00	93.3%	93.3%	100.0%	100.0%	0.0%	100.0%	100.0%
Maintenance/ Technical	223	239	1.07	94.6%	5.4%	1.06	1.21	92.9%	92.5%	100.0%	84.1%	15.9%	86.3%	46.2%
General Support	1,667	2,063	1.24	37.0%	63.0%	1.14	1.30	89.3%	86.6%	90.8%	55.3%	44.7%	76.1%	43.1%
HCA (Student Nurse/Midwife COVID-19)	12	24	2.05	25.0%	75.0%	3.11	1.84	0.0%	0.0%	0.0%	20.8%	79.2%	33.3%	16.7%
HCA, Nurse's Aide, etc.	11,144	12,941	1.16	22.1%	77.9%	1.09	1.18	85.0%	85.0%	85.2%	56.6%	43.4%	71.1%	52.5%
Health & Social Care Assistants	39	45	1.14	22.2%	77.8%	1.08	1.16	84.4%	84.4%	80.0%	73.3%	26.7%	90.0%	68.6%
Health Care Assistants	11,195	13,010	1.16	22.1%	77.9%	1.10	1.18	84.8%	84.3%	85.0%	56.6%	43.4%	71.1%	52.4%
Home Help	3,365	5,157	1.53	3.5%	96.5%	1.52	1.53	66.1%	35.5%	67.2%	39.9%	60.1%	51.9%	39.5%
Care, other	1,854	2,308	1.25	29.1%	70.9%	1.40	1.19	88.1%	85.4%	89.2%	63.5%	36.5%	74.3%	59.1%
Patient & Client Care	16,413	20,475	1.25	18.2%	81.8%	1.16	1.27	80.5%	82.1%	80.1%	53.2%	46.8%	70.7%	49.3%

Employment by WTE, Headcount, Gender, Full-Time /Part-Time etc.: Mar 2021

Social Care Services CHO	WTE	Headcount	WTE: no.	% Male	% female	Male WTE: no.	Female WTE: no.	% Total Perm	% Male Perm	% Female Perm	% Total Full Time	% Total Part Time	% Male FT	% Female FT
Overall	32,368	39,094	1.21	16.8%	83.2%	1.14	1.22	84.9%	84.4%	85.0%	58.2%	41.8%	74.0%	55.0%
CHO 1	3,461	4,031	1.16	16.1%	83.9%	1.10	1.18	79.7%	79.7%	78.4%	58.2%	41.8%	80.1%	54.1%
HSE	1,768	2,114	1.20	13.6%	86.4%	1.04	1.22	90.1%	90.1%	90.7%	50.6%	49.4%	89.2%	89.2%
Section 38	1,292	1,633	1.26	23.5%	76.5%	1.26	1.27	81.4%	81.4%	81.3%	39.4%	60.6%	42.7%	42.7%
CHO 2	3,059	3,747	1.22	17.9%	82.1%	1.16	1.24	86.3%	86.3%	86.9%	45.7%	54.3%	62.6%	42.0%
HSE	1,210	1,551	1.28	12.6%	87.4%	1.06	1.32	90.7%	90.7%	91.8%	52.4%	47.6%	88.2%	88.2%
Section 38	1,806	2,153	1.19	12.0%	88.0%	1.17	1.20	84.3%	84.3%	84.7%	37.9%	62.1%	38.8%	38.8%
CHO 3	3,016	3,704	1.23	12.2%	87.8%	1.12	1.25	87.0%	87.0%	87.7%	44.0%	56.0%	60.0%	41.7%
HSE	3,200	4,173	1.30	12.5%	87.5%	1.15	1.33	66.6%	66.6%	68.2%	75.7%	24.3%	88.1%	88.1%
Section 38	2,264	2,751	1.21	19.3%	80.7%	1.15	1.23	85.5%	85.5%	87.0%	63.4%	36.6%	68.0%	68.0%
CHO 4	5,465	6,924	1.27	15.2%	84.8%	1.15	1.29	74.1%	74.1%	75.3%	70.8%	29.2%	78.0%	69.6%
HSE	2,081	2,531	1.22	10.3%	89.7%	1.11	1.23	84.3%	84.3%	84.0%	50.9%	49.1%	80.5%	80.5%
Section 38	1,172	1,370	1.17	20.8%	79.2%	1.11	1.18	82.5%	82.5%	81.8%	47.6%	52.4%	59.6%	59.6%
CHO 5	3,253	3,901	1.20	14.0%	86.0%	1.11	1.22	83.6%	83.6%	83.3%	49.7%	50.3%	69.6%	46.5%
HSE	578	639	1.11	20.8%	79.2%	1.05	1.12	83.7%	83.7%	84.6%	74.6%	25.4%	88.7%	88.7%
Section 38	1,435	1,756	1.22	28.0%	72.0%	1.41	1.16	94.3%	94.3%	93.6%	70.6%	29.4%	84.6%	84.6%
CHO 6	2,013	2,395	1.19	26.1%	73.9%	1.31	1.15	91.5%	91.5%	91.0%	71.6%	28.4%	85.4%	66.8%
HSE	1,149	1,376	1.20	15.7%	84.3%	1.12	1.21	89.3%	89.3%	90.3%	64.0%	36.0%	79.6%	79.6%
Section 38	2,943	3,457	1.17	23.2%	76.8%	1.10	1.20	88.9%	88.9%	89.0%	69.5%	30.5%	82.5%	82.5%
CHO 7	4,092	4,833	1.18	21.1%	78.9%	1.10	1.20	89.1%	89.1%	89.4%	67.9%	32.1%	81.9%	64.2%
HSE	2,089	2,590	1.24	12.6%	87.4%	1.14	1.26	88.6%	88.6%	88.9%	52.6%	47.4%	77.6%	77.6%
Section 38	1,616	1,958	1.21	21.7%	78.3%	1.14	1.23	94.3%	94.3%	94.1%	41.7%	58.3%	48.5%	48.5%
CHO 8	3,705	4,548	1.23	16.5%	83.5%	1.14	1.25	91.1%	91.1%	91.0%	47.9%	52.1%	61.1%	45.3%
HSE	1,153	1,288	1.12	25.2%	74.8%	1.05	1.14	89.5%	89.5%	89.7%	79.6%	20.4%	90.4%	90.4%
Section 38	3,070	3,636	1.18	12.3%	87.7%	1.10	1.20	89.5%	89.5%	89.6%	53.0%	47.0%	67.3%	67.3%
CHO 9	4,222	4,924	1.17	15.7%	84.3%	1.08	1.18	89.5%	89.5%	89.6%	60.0%	40.0%	77.0%	56.8%
other Community Services	81	87	1.08	24.1%	75.9%	1.05	1.09	82.8%	82.8%	83.3%	87.4%	12.6%	90.5%	86.4%

Summary Staff Movement: March 2021

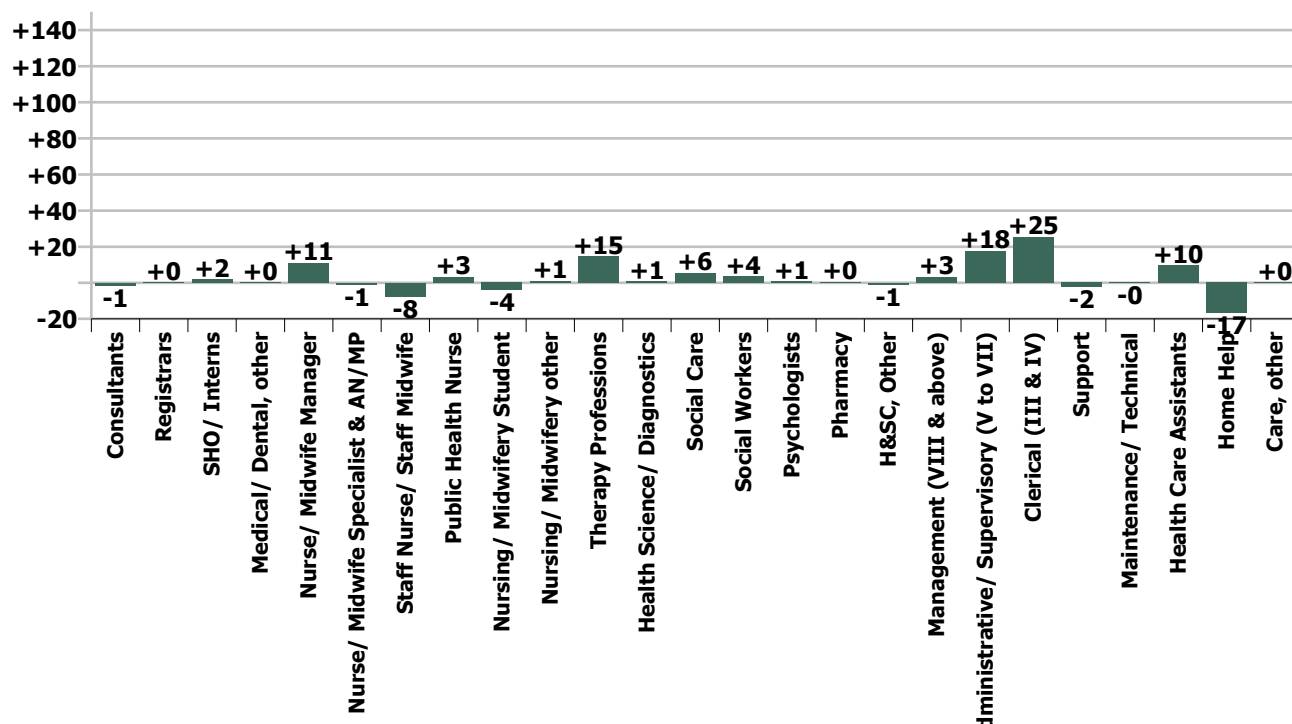
Month-on-month
Summary

WTE change since Feb 21	% change since Feb 21	overall	Consultants	Registrars	SHO/ Interns	Medical/ Dental, other	Medical & Dental	Nurse/ Midwife Manager	Nurse/ Midwife Specialist & AN/MP	Staff Nurse/ Staff Midwife	Public Health Nurse	Nursing/ Midwifery Student	Nursing/ Midwifery other	Nursing & Midwifery	Therapy Professions	Health Science/ Diagnostics	Social Care	Social Workers	Psychologists	Pharmacy	H&SC, Other	Health & Social Care Professionals	Management (VIII & above)	Administrative/ Supervisory (V to VII)	Clerical (III & IV)	Management & Administrative	Support	Maintenance/ Technical	General Support	Health Care Assistants	Home Help	Care, other	Patient & Client Care	
Overall	+0.2%	+65	-1.3	+0.3	+1.9	+0.3	+1.3	+11.0	-1.0	-7.7	+3.2	-3.9	+1.0	+2.6	+14.6	+0.7	+5.5	+3.6	+0.8	+0.4	-1.1	+24.6	+3.2	+17.6	+25.4	+46.2	-2.3	-0.1	-2.4	+9.5	-16.7	+0.2	-6.9	
CHO 1	+0.6%	+22				-0.2	-0.2	+0.5	+0.0	+5.2		-0.5		+5.3	-2.0	+0.1	-0.6	-0.7	-0.1		-0.2	-3.4		+0.1	-0.2	-0.1	+0.3	-0.4	-0.2	-1.6	+19.5	+2.5	+20.4	
Disabilities	+0.1%	+1				+0.0	+0.0	-0.6	+1.0	+1.9				+2.3	-0.9		-0.8	+0.1	-0.1		-0.9	-2.5	-1.0	-2.2	+0.9	-2.3	+0.5	+0.5	+3.0		+0.3	+3.3		
Older People	-0.8%	-12				+0.1	+0.1	+0.6		+2.0				+2.6	+1.3			-0.0				+1.3	-1.0	+0.4	+0.7	+0.1	+0.6		+0.6	-0.5	-16.7	+0.2	-17.1	
CHO 2	-0.4%	-11				+0.1	+0.1	+0.1	+1.0	+3.9				+4.9	+0.4		-0.8	+0.1	-0.1		-0.9	-1.2	-2.0	-1.8	+1.6	-2.2	+1.1	+1.1	+2.5	-16.7	+0.5	-13.8		
Disabilities	+0.7%	+13					+0.0	+1.9	+0.0	-0.6				+1.3	+1.9		+4.6	+0.7	-1.6		+0.1	+5.7		-0.3	-0.9	-1.1	+1.4		+1.4	+3.3		+2.4	+5.6	
Older People	+0.9%	+9						-1.4		+0.7	+0.0			-0.8	+1.2			+1.4				+2.7	+1.1	+0.1	+4.5	+5.8	-0.4	-0.6	-1.1	+3.9	-1.5	+0.3	+2.7	
CHO 3	+0.7%	+22					+0.0	+0.4	+0.0	+0.1	+0.0			+0.6	+3.1		+4.6	+2.2	-1.6		+0.1	+8.4	+1.1	-0.1	+3.7	+4.7	+1.0	-0.6	+0.4	+7.1	-1.5	+2.7	+8.3	
Disabilities	+0.7%	+19						+1.1	-1.0	+1.7				+1.8	-0.4		-0.7	+0.6	+0.2			-0.3	+0.0	+2.8	+0.7	+3.5	+0.0	+0.0	+0.0	+5.9		+8.0	+13.8	
Older People	-0.8%	-23				+1.4	+1.4	-0.6		-9.2				-9.8	+4.0			-0.6		-0.0		+3.4	-1.0	+0.6	-1.0	-1.4	-0.0	-0.0	-0.1	-6.1	-11.2	+0.6	-16.7	
CHO 4	-0.1%	-4				+1.4	+1.4	+0.5	-1.0	-7.5				-8.1	+3.7		-0.7	-0.1	+0.2	-0.0		+3.1	-0.9	+3.3	-0.3	+2.1	-0.0	-0.0	-0.0	-0.2	-11.2	+8.5	-2.8	
Disabilities	+1.5%	+24	+0.1				+0.1	+1.9	-1.0	+1.4	+3.1	-1.0		+4.4	+6.6		+2.4	+0.7	+1.9		-0.1	+11.5	+0.1	+0.8	+5.3	+6.2	-0.9	-0.9	+4.7	+0.5	-2.4	+2.8		
Older People	-0.2%	-4						-0.3	+1.0	+1.9				+2.7	-1.0							-1.0		+2.5	-2.3	+0.3	-0.9	-0.0	-0.9	-0.6	-4.2	-0.1	-4.9	
CHO 5	+0.6%	+20	+0.1				+0.1	+1.6	+0.0	+3.4	+3.1	-1.0		+7.1	+5.6		+2.4	+0.7	+1.9		-0.1	+10.5	+0.1	+3.4	+3.0	+6.4	-1.8	-0.0	-1.9	+4.1	-3.7	-2.5	-2.1	
Disabilities	-1.5%	-18						-1.7		+0.2				-1.5	-0.5		-6.4	+1.0	+0.1		-0.1	-5.9	+0.2	+2.4	-0.2	+2.3	-0.2	-0.2	-4.2		-8.9	-13.1		
Older People	-0.3%	-3				-1.0	-1.0	+1.0		-2.8				-1.8	+0.1			+0.1		+0.5		+0.6	+0.8	+0.9	+0.3	+2.1	-1.1		-1.1	-1.4		-0.0	-1.5	
CHO 6	-1.0%	-21				-1.0	-1.0	-0.7		-2.6				-3.3	-0.4		-6.3	+1.1	+0.1	+0.5	-0.1	-5.3	+1.0	+3.3	+0.1	+4.4	-1.3		-1.3	-5.6		-9.0	-14.6	
Disabilities	-0.1%	-2		+0.1	+1.0		+1.0	+5.3		-2.6		+0.5	+1.0	+4.2	+3.0	+0.6	+0.5	+0.1		+0.0		+4.2	+0.6	-0.7	-2.2	-2.2	-1.6	+1.0	-0.6	-1.5	-0.5	-6.5	-8.5	
Older People	+0.5%	+5						+5.5	-0.0	-2.5			+0.2	+3.2	+0.1			-0.7				-0.6	-1.0	-0.3	+2.0	+0.8	+1.0		+1.0	+0.7	-0.3	+0.1	+0.5	
CHO 7	+0.1%	+3		+0.1	+0.9		+1.0	+10.8	-0.0	-5.1			+1.0	+7.4	+3.2	+0.6	+0.5	-0.7		+0.0		+3.6	-0.3	-0.9	-0.2	-1.4	-0.6	+1.0	+0.4	-0.8	-0.8	-6.4	-8.0	
Disabilities	+0.1%	+3						+0.3	+0.0	-3.7		-0.2	+0.0	-3.6	-2.5		-1.9	+0.3	+0.4		+0.4	-3.3	+0.0	+0.7	-0.3	+0.5	-0.4	-0.0	-0.4	+8.0	-1.3	+2.9	+9.6	
Older People	+0.2%	+3				+0.0	+0.0	-0.3	-0.1	-0.5	+0.1		-0.0	-0.8	+0.3			+0.5				+0.8	-0.6	+0.9	+0.0	+0.3	-0.2		-0.2	+3.3	-0.9	+0.1	+2.5	
CHO 8	+0.1%	+5				+0.0	+0.0	+0.1	-0.1	-4.2	+0.1	-0.2	-0.0	-4.4	-2.2		-1.9	+0.7	+0.4		+0.4	-2.6	-0.6	+1.6	-0.3	+0.8	-0.5		-0.5	+11.3	-2.2	+2.9	+12.0	
Disabilities	+0.5%	+16	-1.0				-1.0	-1.9	-0.9	+1.5		-3.0	+0.0	-4.3	-1.4		+8.3	+0.3	-0.0		-0.4	+6.8	+3.7	+7.3	+8.9	+19.9	+1.1		+1.1	-6.7		+0.2	-6.4	
Older People	+1.5%	+14	-0.4	+0.3	+1.0		+0.8	-0.3		-2.4				-2.7	+4.8			-0.1				+4.7	+0.8	+1.6	+9.6	+12.0	-1.5		-1.5	-0.6		+0.7	+0.2	
CHO 9	+0.7%	+30	-1.4	+0.3	+1.0		-0.2	-2.1	-0.9	-0.9		-3.0	+0.0	-6.9	+3.3		+8.3	+0.2	-0.0		-0.4	+11.5	+4.6	+8.9	+18.5	+32.0	-0.4		-0.4	-7.2		+1.0	-6.3	
Disabilities	+0.5%	+0																							+0.0									
Older People	-0.5%	-0																						+0.3	-0.1									
other Community Services	-0.4%	-0																						+0.3	-0.1	-0.5	-0.4							0.0
		+0.2%	-5.0%	+1.5%	+10.8%	+0.3%	+0.8%	+0.7%	-0.9%	-0.1%	+16.4%	-4.0%	+3.4%	+0.0%	+1.3%	+2.7%	+0.2%	+1.1%	+0.3%	+1.9%	-1.4%	+0.5%	+1.1%	+2.4%	+2.0%	+2.0%	-0.2%	-0.0%	-0.1%	+0.1%	-0.5%	+0.0%	-0.0%	

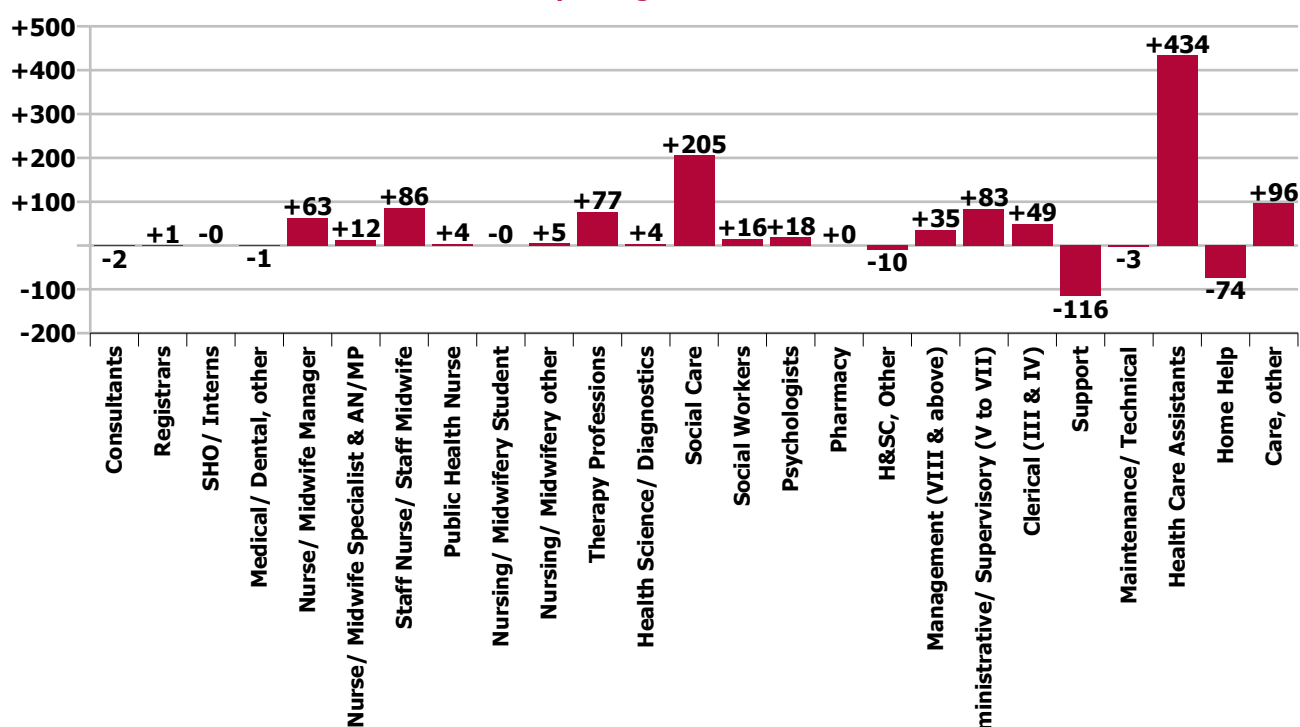
Year-on-year Summary

WTE change since Mar 20	% change since Mar 20	overall	Consultants	Registrars	SHO/ Interns	Medical/ Dental, other	Medical & Dental	Nurse/ Midwife Manager	Nurse/ Midwife Specialist & AN/MP	Staff Nurse/ Staff Midwife	Public Health Nurse	Nursing/ Midwifery Student	Nursing/ Midwifery other	Nursing & Midwifery	Therapy Professions	Health Science/ Diagnostics	Social Care	Social Workers	Psychologists	Pharmacy	H&SC, Other	Health & Social Care Professionals	Management (VIII & above)	Administrative Supervisory (V to VII)	Clerical (III & IV)	Management & Administrative	Support	Maintenance/ Technical	General Support	Health Care Assistants	Home Help	Care, other	Patient & Client Care	
Overall	+3.1%	+984	-2	+1	-0	-1	-3	+63	+12	+86	+4	-0	+5	+5	+171	+77	+4	+205	+16	+18	+0	-10	+311	+35	+83	+49	+168	-116	-3	-119	+434	-74	+96	-456
Disabilities	+3.4%	+51				-0	-0	+1	+2	+10		+5	-1	+17	-6		+2	-0	+6		-3	-0	+3	+7	+3	+13	+1		+1	+16	+1	+4	+21	
Older People	+3.0%	+55				-5	-5	-0	+1	+7			+1	+9	+6	+0		-1				+5	+3	+1	+4	-7	-1	-8	+15	+37	-4	+48		
CHO 1	+3.1%	+106				-5	-5	+1	+3	+17		+5		+26	+0	+0	+2	-1	+6		-3	+5	+3	+10	+4	+17	-6	-1	-7	+31	+38	-0	+69	
Disabilities	+1.9%	+29		-1			-1	+2	+1	+1				+3	-8		+26	+1	-1		-5	+13	+1	+2	+0	+3	-7	-0	-3	+17		+0	+17	
Older People	+2.3%	+35						+11		+3	+0			+14	+3			+1		+0		+4	-1	+0	-10	-10	+0	+1	+1	+17	-3	+12	+26	
CHO 2	+2.1%	+63		-1			-1	+13	+1	+3	+0			+17	-5		+26	+2	-1	+0	-5	+17		+2	-9	-7	+1	+1	-6	+33	-3	+12	+43	
Disabilities	+7.6%	+137	-0				-0	+1	-2	+14		-4		+9	+7	+2	+35	+1	+1		-0	+45	+1	+6	-1	+5	-2	+6	+4	+66		+8	+73	
Older People	+9.3%	+90				+1	+1	+1	+2	+5				+8	+3	-0		+0				+3	+1	-2	+5	+4	+0	-1	-0	+35	+31	+8	+74	
CHO 3	+8.2%	+227	-0			+1	+1	+2	-0	+19		-4		+17	+10	+2	+35	+1	+1		-0	+48	+2	+4	+4	+10	-1	+5	+4	+101	+31	+16	+148	
Disabilities	+5.8%	+141						-1		+8		+4	-1	+10	+0		+14	+1	+3		+2	+20	+2	+2	+6	+9	-2	+2	-1	+65		+38	+103	
Older People	-1.6%	-47			+1	+1	+2	+7	+0	-1	+2	-1		+6	+9			+0		+0		+10	+1	+3	+5	+9	+12	+1	+13	+8	-99	+4	-87	
CHO 4	+1.8%	+94			+1	+1	+2	+6	+0	+6	+2	+3	-1	+16	+9		+14	+2	+3	+0	+2	+29	+3	+5	+11	+18	+9	+3	+12	+73	-99	+42	+16	
Disabilities	+7.5%	+113	-0				-0	+7	+1	-2	+4	-0	+1	+10	+15		-3	+4	+7		-3	+20	+4	+9	+8	+22	-1	-1	-2	+68	-13	+8	+63	
Older People	+0.5%	+8				+6	+6	+4	+3	-2	-2			+4	-7			+0				-6	+1	+9	+6	+16	-37	-4	-41	+39	-7	-2	+29	
CHO 5	+3.8%	+120	-0			+6	+6	+11	+4	-4	+2	-0	+1	+14	+8		-3	+5	+7		-3	+14	+5	+18	+15	+38	-38	-5	-43	+107	-20	+5	+92	
Disabilities	+3.2%	+38		+1			+1	-1		+3				+2	+4		+35	+1	-2		-1	+38	+1	+0	+3	+4	-11	-3	-5	+64	-1	+3	+67	
Older People	-2.2%	-18		+1		-2	-1	-4		-11				-15	+1			+0	+0			+2	+0	+4	+1	+5	-4	-1	-5	-2		-2	-3	
CHO 6	+1.0%	+20		+2		-2	-0	-6		-8				-13	+6		+35	+1	-2	+0	-1	+39	+1	+4	+4	+9	-15	-4	-19	+13		-9	+4	
Disabilities	+3.1%	+92		+0	+1		+1	+3	-1	+2			+2	+6	+7	+1	+25	-2	-0	-0		+29	+9	+9	-1	+17	-14	+2	-12	+32	-2	+20	+50	
Older People	+1.7%	+17				-2	-2	+15	-0	+24		+1		+40	+1			+0		-1		+1	+1	+4	+3	+8	+11		+11	-35	-6	+0	-41	
CHO 7	+2.7%	+109		+0	+1	-2	-1	+18	-1	+27		+1	+2	+46	+8	+1	+25	-2	-0	-1		+30	+10	+13	+2	+25	-3	+2	-1	-3	-8	+21	+9	
Disabilities	+3.8%	+82	-1				-1	+7	-2	+3		-7	-0	+1	+2	</td>																		

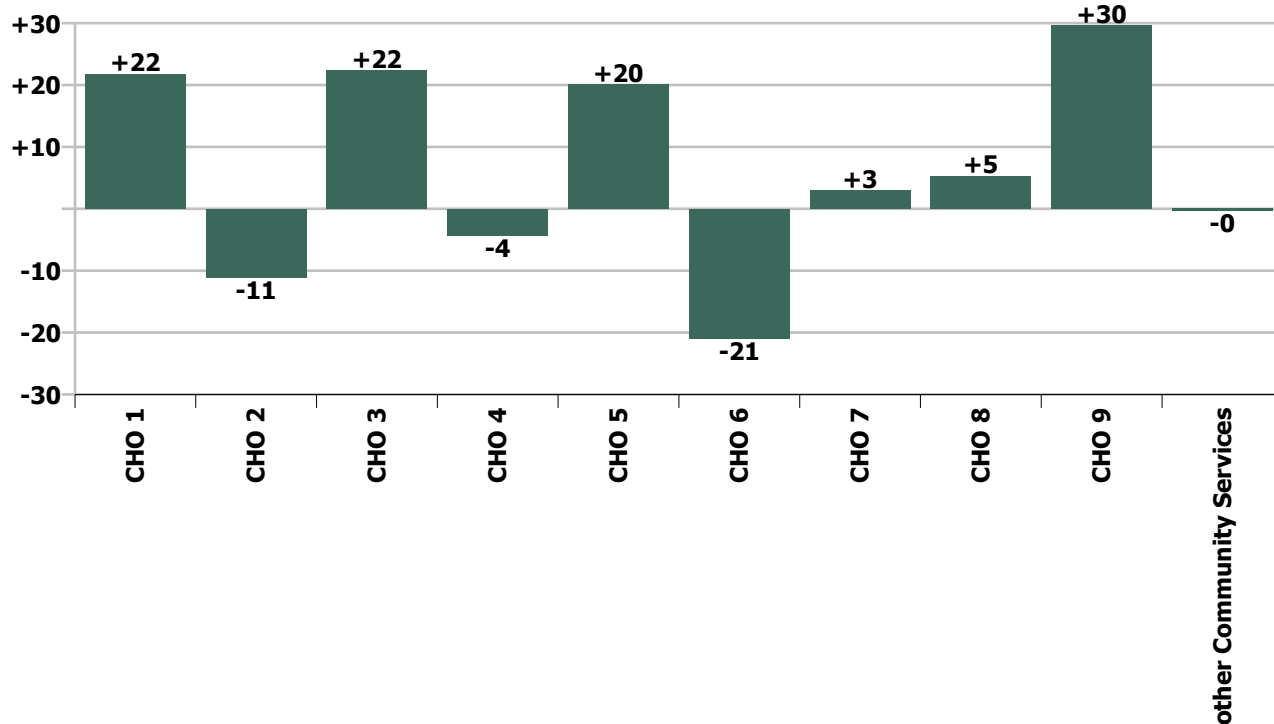
Staff Group change since: Feb 2021



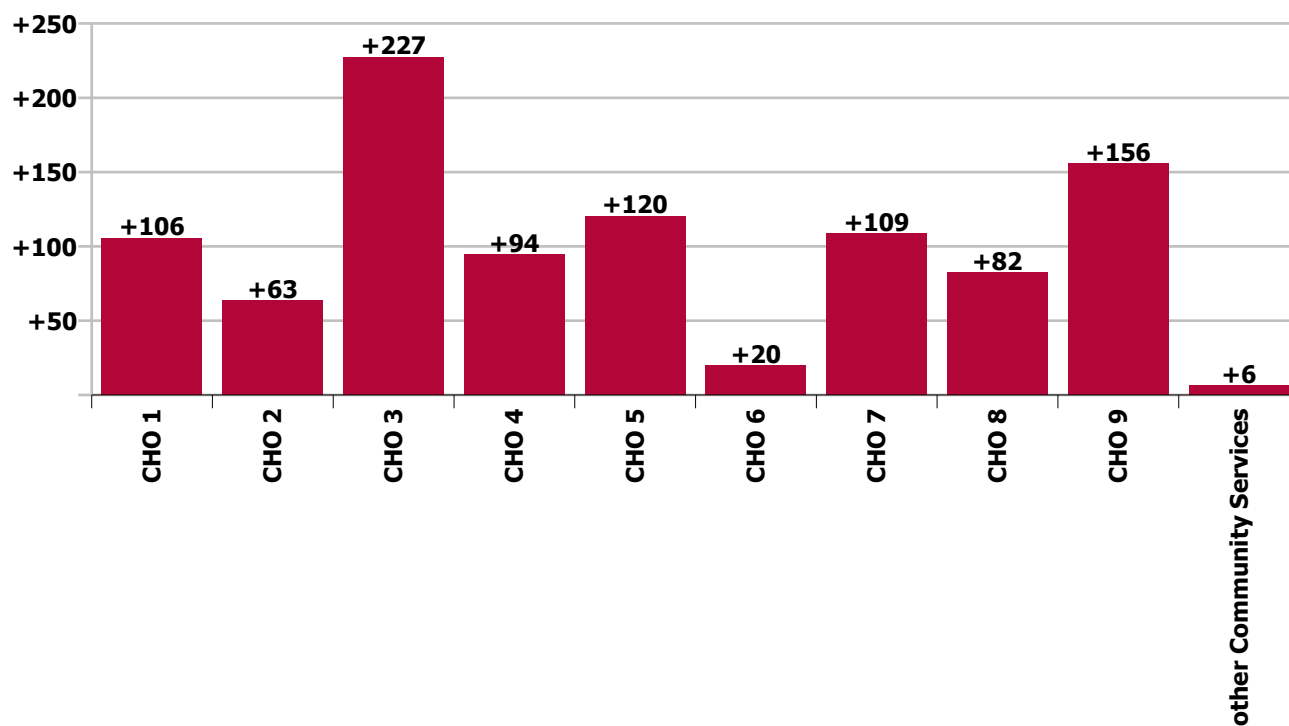
Staff Group change since: Mar 2020



CHO change since: Feb 2021



CHO change since: Mar 2020



Longitudinal Employment Levels by Grade Group - Dec 2015 to Mar 2021

Mar 2021 (Dec 2015 figure: 28,322)	WTE Mar 2021	WTE change since Dec 15	WTE change since Dec 16	WTE change since Dec 17	WTE change since Dec 18	WTE change since Dec 19	WTE change since Dec 20	% change since Dec 15	% change since Dec 16	% change since Dec 17	% change since Dec 18	% change since Dec 19	% change since Dec 20
Overall	32,368	+4,046	+3,131	+1,867	+1,244	+833	+9	+14.3%	+10.7%	+6.1%	+4.0%	+2.6%	+0.0%
Consultant Medicine	4	-5	-7	-6			-1	-56.1%	-67.2%	-60.9%			-18.6%
Consultant Paediatrics	3	-0	-0	-0				-3.5%	-5.0%	-2.9%			
Consultant Psychiatry	19	-3	-3	-5	+1	-2	-3	-15.0%	-15.3%	-21.4%	+4.0%	-10.6%	-12.7%
Consultant Surgery		-1	-1	-0	-0			-100.0%	-100.0%	-100.0%	-100.0%	-100.0%	-100.0%
Consultants	25	-9	-12	-11	+1	-2	-4	-26.4%	-31.7%	-30.1%	+2.4%	-8.0%	-12.3%
Registrar	13	-1	+2	-0	+1	-0	+4	-5.5%	+15.6%	-1.5%	+5.0%	-1.5%	+50.6%
Senior Registrar	3	-1		-1	-1		-1	-25.0%		-25.0%	-25.0%		-25.0%
Specialist Registrar	4	-1	+0	-1	+2	-2	+0	-13.8%	+7.8%	-13.8%	+115.5%	-28.2%	+7.8%
Registrars	21	-2	+2	-2	+2	-2	+4	-10.7%	+11.4%	-8.4%	+10.4%	-8.4%	+22.4%
SHO/ Interns	20	+4	+4	+3	+1	-2	-3	+26.3%	+25.1%	+18.0%	+5.7%	-9.2%	-12.0%
Dentists		-1						-100.0%	-100.0%	-100.0%	-100.0%	-100.0%	-100.0%
Other Medical	101	+3	-0	+1	+1	-10	-17	+2.6%	-0.1%	+0.6%	+1.1%	-9.1%	-14.7%
Medical/ Dental, other	101	+2	-0	+1	+1	-10	-17	+2.0%	-0.1%	+0.6%	+1.1%	-9.1%	-14.7%
Medical & Dental	167	-5	-6	-9	+5	-16	-20	-3.1%	-3.3%	-5.2%	+2.9%	-8.9%	-10.7%
Clinical Nurse/ Midwife Manager	1,374	+48	+28	+37	+41	+55	+23	+3.6%	+2.1%	+2.8%	+3.1%	+4.1%	+1.7%
Director Nursing/Midwifery, Assistant	150	+27	+20	+21	+25	+6	-2	+22.1%	+15.1%	+16.1%	+19.9%	+4.3%	-1.5%
Director of Nursing/Midwifery	144	+16	+15	+16	+23	+4	+3	+12.5%	+12.0%	+12.5%	+19.4%	+2.6%	+2.0%
Nurse/ Midwife Manager	1,667	+91	+63	+74	+90	+64	+24	+5.7%	+3.9%	+4.6%	+5.7%	+4.0%	+1.4%
Advanced Nurse/ Midwife Practitioner	26	+23	+22	+21	+18	+14	+2	+783.0%	+562.3%	+429.8%	+195.0%	+108.3%	+7.6%
Clinical Nurse/ Midwife Specialist	78	-12	-6	-1	-5	+2	+0	-13.8%	-6.9%	-1.9%	-6.4%	+2.7%	+0.1%
Nurse/ Midwife Specialist & AN/MP	104	+11	+17	+20	+12	+16	+2	+11.8%	+19.1%	+23.8%	+13.2%	+17.9%	+1.9%
Graduate Nursing/ Midwifery		-13						-100.0%	-100.0%	-100.0%	-100.0%	-100.0%	-100.0%
Staff Midwives	1	+0	+1	-1	+1	+1	+0	+12.5%	+125.0%	-50.0%	-100.0%	-100.0%	+2.3%
Staff Nurse [Intellectual Disability]	1,667	-114	-59	-37	-19	+69	-123	-6.4%	-3.4%	-2.2%	-1.1%	+4.3%	-6.9%
Staff Nurse [Psychiatric]	209	+99	+119	+133	+133	+121	+152	+90.2%	+131.9%	+175.7%	+174.0%	+136.9%	+262.3%
Staff Nurses [General/ Children's]	3,360	-144	-156	-125	-113	-103	-9	-4.1%	-4.4%	-3.6%	-3.2%	-3.0%	-0.3%
Staff Nurse/ Staff Midwife	5,237	-171	-96	-30	+3	+88	+20	-3.2%	-1.8%	-0.6%	+0.1%	+1.7%	+0.4%
Public Health Nurse	23	-0	+2	+2	+2	+3	+2	-0.4%	+9.1%	+8.5%	+11.7%	+15.0%	+11.3%
Pre-registration Nurse/ Midwife Intern	81	+66	+69	+69	+46	+52	+78	+464.7%	+572.0%	+584.0%	+131.6%	+185.5%	+3125.6%
Pre-registration Nurse Intern (COVID-19)							-32	-100.0%	-100.0%	-100.0%	-100.0%	-100.0%	-100.0%
Post-registration Nurse/ Midwife Student						-1		-100.0%	-100.0%	-100.0%	-100.0%	-100.0%	-100.0%
Nursing/ Midwifery awaiting registration	15	+15	+15	+1	+15	-0	+0	-100.0%	-100.0%	+3.6%	-100.0%	-2.3%	+1.0%
Nursing/ Midwifery Student	95	+81	+83	+69	+60	+51	+47	+566.2%	+692.8%	+268.9%	+173.2%	+115.8%	+95.6%
Nursing Education/Clinical	28	+7	+6	+6	+6	+6	+1	+30.6%	+25.7%	+26.6%	+26.2%	+26.1%	+4.4%
Other Nursing/ Midwifery	2	-4	-3	-3	+1	+1	+1	-69.0%	-60.0%	-60.0%	+100.0%	+100.0%	+100.0%
Nursing/ Midwifery other	30	+2	+3	+3	+7	+7	+2	+7.5%	+10.0%	+10.6%	+29.4%	+29.3%	+7.9%
Nursing & Midwifery	7,156	+13	+72	+138	+174	+229	+97	+0.2%	+1.0%	+2.0%	+2.5%	+3.3%	+1.4%

Mar 2021 (Dec 2015 figure: 28,322)	WTE Mar 2021	WTE change since Dec 15	WTE change since Dec 16	WTE change since Dec 17	WTE change since Dec 18	WTE change since Dec 19	WTE change since Dec 20	% change since Dec 15	% change since Dec 16	% change since Dec 17	% change since Dec 18	% change since Dec 19	% change since Dec 20
Overall	32,368	+4,046	+3,131	+1,867	+1,244	+833	+9	+14.3%	+10.7%	+6.1%	+4.0%	+2.6%	+0.0%
Dietitians	41	+19	+12	+12	+10	+6	+7	+85.8%	+42.1%	+40.1%	+32.9%	+18.3%	+19.8%
Occupational Therapists	413	+119	+66	+69	+68	+35	+21	+40.4%	+19.0%	+20.2%	+19.7%	+9.4%	+5.4%
Physiotherapists	336	+50	+35	+30	+27	+23	+11	+17.4%	+11.7%	+9.8%	+8.9%	+7.3%	+3.3%
Podiatrists & Chiropodists	15	+3	+0	-1	+0	+3	+3	+26.3%	+3.3%	-5.4%	+2.2%	+26.9%	+20.8%
Speech & Language Therapists	328	+94	+37	+21	+26	+12	+1	+40.3%	+12.6%	+6.9%	+8.5%	+3.7%	+0.2%
Therapy Professions	1,133	+285	+150	+132	+131	+80	+42	+33.6%	+15.3%	+13.2%	+13.1%	+7.6%	+3.8%
Audiology		-14	-13	-18				-100.0%	-100.0%	-100.0%	-100.0%	-100.0%	-100.0%
Clinical Engineering	14	-4	-4	-4	+2	+1	+1	-22.9%	-23.8%	-22.5%	+16.2%	+7.3%	+7.7%
Clinical Measurement	3	+2	+2	+2	+2	+1	+0	+160.0%	+160.0%	+160.0%	+140.7%	+114.9%	+20.4%
Medical Science	4	+1		+1				+33.3%		+33.3%			
Phlebotomists		-1	-1	-1	-1	-1		-100.0%	-100.0%	-100.0%	-100.0%	-100.0%	-100.0%
Radiographers	6	-2	-2	-2	-1	-1	+0	-26.1%	-24.8%	-25.7%	-8.0%	-12.0%	+2.2%
Health Science/ Diagnostics	27	-19	-18	-22	+2	+1	+2	-41.2%	-40.9%	-45.7%	+7.9%	+2.0%	+6.3%
Social Care	2,805	+862	+611	+456	+313	+207	+13	+44.3%	+27.8%	+19.4%	+12.6%	+8.0%	+0.5%
Social Workers	335	+71	+33	+31	+21	+18	+7	+27.0%	+10.8%	+10.1%	+6.6%	+5.6%	+2.1%
Psychologists	235	+42	+24	+11	+27	+28	+4	+22.1%	+11.5%	+4.9%	+13.3%	+13.7%	+1.8%
Pharmacy	25	+4	+4	+3	+1	+3	+1	+17.1%	+18.8%	+14.6%	+5.4%	+11.5%	+5.7%
Counsellor Therapists	21	+4	+4	+2	+3	+2	+1	+26.7%	+25.2%	+8.5%	+18.7%	+11.5%	+6.7%
HSCP Trainees/ Students		-3	-2	-1				-100.0%	-100.0%	-100.0%	-100.0%	-100.0%	-100.0%
Other Health & Social Care	44	-19	-16	-16	-10	-7	-2	-30.6%	-26.7%	-27.2%	-17.8%	-14.1%	-4.1%
Play Therapists/ Specialists	12	-3	-3	-2	-4	-5	+0	-18.1%	-21.9%	-15.9%	-23.5%	-27.6%	+0.3%
H&SC, Other	77	-21	-17	-18	-10	-10	-1	-21.2%	-18.4%	-18.6%	-11.4%	-11.0%	-0.7%
Health & Social Care Professionals	4,635	+1,225	+786	+593	+486	+326	+68	+35.9%	+20.4%	+14.7%	+11.7%	+7.6%	+1.5%
Executive Management	55	+21	+19	+10	+14	+13	+5	+63.1%	+54.0%	+20.8%	+32.7%	+29.9%	+9.2%
Senior Management (VIII & GM)	238	+71	+60	+60	+45	+26	+6	+42.6%	+33.6%	+33.7%	+23.1%	+12.3%	+2.5%
Management (VIII & above)	293	+92	+79	+69	+58	+39	+10	+46.1%	+37.0%	+31.1%	+24.8%	+15.3%	+3.7%
Middle Management (V-VII)	730	+280	+234	+210	+160	+102	+43	+62.2%	+47.1%	+40.3%	+28.1%	+16.2%	+6.2%
Other Administrative	14	-2	-1	-3	-3	-2	-2	-13.8%	-5.5%	-17.5%	-16.8%	-12.3%	-11.5%
Administrative/ Supervisory (V to VII)	744	+278	+233	+207	+157	+100	+41	+59.5%	+45.6%	+38.5%	+26.8%	+15.5%	+5.8%
Clerical (III & IV)	1,293	+249	+203	+152	+75	+62	+21	+23.9%	+18.6%	+13.3%	+6.2%	+5.0%	+1.6%
Management & Administrative	2,330	+619	+515	+428	+291	+201	+72	+36.2%	+28.4%	+22.5%	+14.3%	+9.4%	+3.2%
Catering	308	-19	-18	-9	-12	-11	-4	-5.9%	-5.5%	-2.9%	-3.6%	-3.5%	-1.4%
Household Services	877	-254	-194	-134	-93	-35	-8	-22.4%	-18.1%	-13.3%	-9.6%	-3.8%	-0.9%
Other Labs & Associated	1	-0	-0	+0		+0	+0	-13.3%	-2.8%	+4.0%		+4.0%	+4.0%
Other Support	164	-88	-70	-69	-65	-58	-1	-35.0%	-29.9%	-29.6%	-28.4%	-26.2%	-0.5%
Portering	94	-19	-18	-17	-12	-15	-7	-16.7%	-16.2%	-15.2%	-11.1%	-14.2%	-7.3%
Support	1,444	-380	-300	-229	-181	-120	-20	-20.8%	-17.2%	-13.7%	-11.1%	-7.7%	-1.4%
Maintenance	208	-26	-20	-25	-14	-6	-8	-10.9%	-8.9%	-10.6%	-6.4%	-3.0%	-3.7%
Technical Services	15	+10	+10	+10	+9	+7	+4	+196.1%	+196.1%	+196.1%	+147.5%	+86.4%	+36.0%

Mar 2021 (Dec 2015 figure: 28,322)	WTE Mar 2021	WTE change since Dec 15	WTE change since Dec 16	WTE change since Dec 17	WTE change since Dec 18	WTE change since Dec 19	WTE change since Dec 20	% change since Dec 15	% change since Dec 16	% change since Dec 17	% change since Dec 18	% change since Dec 19	% change since Dec 20
Overall	32,368	+4,046	+3,131	+1,867	+1,244	+833	+9	+14.3%	+10.7%	+6.1%	+4.0%	+2.6%	+0.0%
Maintenance/ Technical	223	-16	-10	-15	-5	+1	-4	-6.5%	-4.4%	-6.2%	-2.3%	+0.2%	-1.8%
General Support	1,667	-396	-310	-244	-186	-119	-24	-19.2%	-15.7%	-12.8%	-10.0%	-6.7%	-1.4%
HCA (Student Nurse/Midwife COVID-19)	12	+12	+12	+12	+12	+12	-10	-100.0%	-100.0%	-100.0%	-100.0%	-100.0%	-47.1%
HCA, Nurse's Aide, etc.	11,144	+1,988	+1,344	+883	+482	+305	-16	+21.7%	+13.7%	+8.6%	+4.5%	+2.8%	-0.1%
Health & Social Care Assistants	39	+1	+3	+4	+4	+8	+1	+3.0%	+7.1%	+12.3%	+11.9%	+27.5%	+2.6%
Health Care Assistants	11,195	+2,001	+1,358	+899	+498	+326	-26	+21.8%	+13.8%	+8.7%	+4.7%	+3.0%	-0.2%
Home Help	3,365	+272	+474	-115	-168	-186	-160	+8.8%	+16.4%	-3.3%	-4.8%	-5.2%	-4.5%
Care, other	1,854	+317	+242	+178	+144	+72	+1	+20.6%	+15.0%	+10.6%	+8.4%	+4.1%	+0.1%
Patient & Client Care	16,413	+2,590	+2,074	+962	+474	+212	-185	+18.7%	+14.5%	+6.2%	+3.0%	+1.3%	-1.1%

Source: Health Service Personnel Census