

# Social Care Services Employment Report: May 2020

## Employment by Staff Group

May 2020 (Dec 2019 figure: 31,535)	WTE Apr 2020	WTE May 2020	WTE change since Apr 20	% change since Apr 20	WTE change since Dec 19	WTE change since May 19
<b>Overall</b>	<b>31,476</b>	<b>31,578</b>	<b>+102</b>	<b>+0.3%</b>	<b>+43</b>	<b>+92</b>
Consultants	27	27	-0	-0.9%	-0	+1
Registrars	21	20	-1	-4.2%	-2	-2
SHO/ Interns	21	19	-2	-7.5%	-3	-1
Medical/ Dental, other	100	99	-0	-0.2%	-11	+2
<b>Medical &amp; Dental</b>	<b>169</b>	<b>166</b>	<b>-3</b>	<b>-1.7%</b>	<b>-17</b>	<b>-1</b>
Nurse/ Midwife Manager	1,617	1,619	+2	+0.1%	+16	+20
Nurse/ Midwife Specialist & AN/MP	93	95	+2	+2.1%	+6	+8
Staff Nurse/ Staff Midwife	5,156	5,154	-2	-0.0%	+6	-39
Public Health Nurse	19	20	+1	+3.0%	-0	-1
<i>Pre-registration Nurse/ Midwife Intern</i>	52	7.00	-45	-86.6%	-21	-64
<i>Pre-registration Nurse Intern (COVID-19)</i>	63	158.65	+96	+153.5%	+159	+159
<i>Post-registration Nurse/ Midwife Student</i>	1	5.00	+4	+400.0%	+4	+5
<i>Nursing/ Midwifery awaiting registration</i>	24	14.33	-10	-41.0%	-1	+14
Nursing/ Midwifery Student	140	185	+45	+32.2%	+141	+114
Nursing/ Midwifery other	28	28	+0	+0.8%	+5	+5
<b>Nursing &amp; Midwifery</b>	<b>7,053</b>	<b>7,101</b>	<b>+48</b>	<b>+0.7%</b>	<b>+174</b>	<b>+107</b>
Therapy Professions	1,068	1,080	+12	+1.1%	+27	+51
Health Science/ Diagnostics	24	24	+0	+1.3%	-2	-1
Social Care	2,599	2,587	-12	-0.5%	-11	+41
Social Workers	324	324	-0	-0.1%	+7	-8
Psychologists	217	215	-1	-0.6%	+9	+11
Pharmacy	24	25	+0	+2.0%	+3	+4
H&SC, Other	81	81	+0	+0.3%	-5	-6
<b>Health &amp; Social Care Professionals</b>	<b>4,336</b>	<b>4,336</b>	<b>-0</b>	<b>-0.0%</b>	<b>+27</b>	<b>+93</b>
Management (VIII & above)	259	263	+3	+1.3%	+8	+25
Administrative/ Supervisory (V to VII)	669	669	-1	-0.1%	+25	+41
Clerical (III & IV)	1,250	1,252	+2	+0.2%	+21	+26
<b>Management &amp; Administrative</b>	<b>2,178</b>	<b>2,183</b>	<b>+5</b>	<b>+0.2%</b>	<b>+54</b>	<b>+92</b>
Support	1,562	1,563	+1	+0.1%	+0	-38
Maintenance/ Technical	227	224	-3	-1.2%	+2	-5
<b>General Support</b>	<b>1,789</b>	<b>1,788</b>	<b>-2</b>	<b>-0.1%</b>	<b>+2</b>	<b>-43</b>
Health Care Assistants	10,785	11,017	+232	+2.2%	+148	+167
Home Help	3,425	3,255	-170	-5.0%	-296	-332
Care, other	1,741	1,732	-9	-0.5%	-49	+8
<b>Patient &amp; Client Care</b>	<b>15,951</b>	<b>16,005</b>	<b>+53</b>	<b>+0.3%</b>	<b>-197</b>	<b>-157</b>

## Social Care Services Employment by Administration (HSE / S38): May 2020

May 2020 (Dec 2019 figure: 31,535)	WTE Apr 2020	WTE May 2020	WTE change since Apr 20	% change since Apr 20	WTE change since Dec 19	WTE change since May 19
<b>Overall</b>	<b>31,476</b>	<b>31,578</b>	<b>+102</b>	<b>+0.3%</b>	<b>+43</b>	<b>+92</b>
<b>HSE</b>	<b>16,415</b>	<b>16,485</b>	<b>+70</b>	<b>+0.4%</b>	<b>+57</b>	<b>-141</b>
<b>Section 38</b>	<b>15,061</b>	<b>15,093</b>	<b>+32</b>	<b>+0.2%</b>	<b>-15</b>	<b>+233</b>

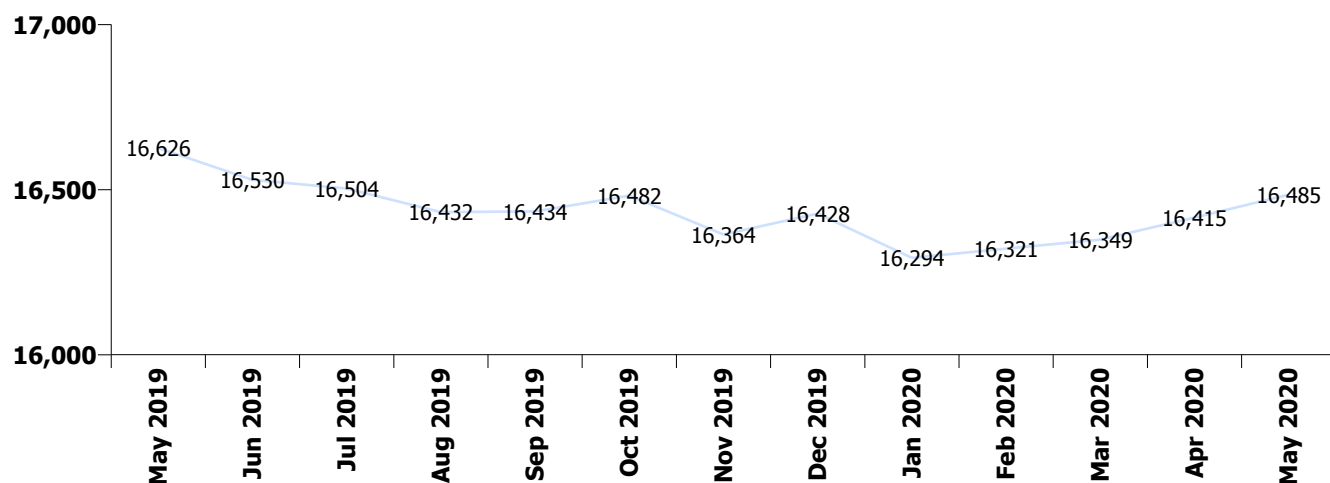
### HSE

May 2020 (Dec 2019 figure: 16,428)	WTE Apr 2020	WTE May 2020	WTE change since Apr 20	% change since Apr 20	WTE change since Dec 19	WTE change since May 19
<b>Overall</b>	<b>16,415</b>	<b>16,485</b>	<b>+70</b>	<b>+0.4%</b>	<b>+57</b>	<b>-141</b>
Consultants	11	10.50	-0	-3.0%		-1
Registrars	9	8.51			-1	-1
SHO/ Interns	10	10.00	+0	+3.6%		+1
Medical/ Dental, other	89	88.86	-0	-0.5%	-12	+2
<b>Medical &amp; Dental</b>	<b>118</b>	<b>118</b>	<b>-0</b>	<b>-0.4%</b>	<b>-13</b>	<b>+1</b>
Nurse/ Midwife Manager	926	927.00	+1	+0.1%	+13	+18
Nurse/ Midwife Specialist & AN/MP	46	47.05	+1	+3.0%	+7	+9
Staff Nurse/ Staff Midwife	3,214	3,210.75	-3	-0.1%	+19	-41
Public Health Nurse	19	19.57	+1	+3.0%	-0	-1
Pre-registration Nurse/ Midwife Intern	31	7.00	-24	-77.6%	+4	-14
Pre-registration Nurse Intern (COVID-19)	5	41.28	+36	+681.8%	+41	+41
Post-registration Nurse/ Midwife Student	1	1.00				+1
Nursing/ Midwifery awaiting registration	24	14.33	-10	-41.0%	-1	+14
Nursing/ Midwifery Student	62	63.61	+2	+2.9%	+45	+43
Nursing/ Midwifery other	11	10.73	+0	+1.9%	+2	+1
<b>Nursing &amp; Midwifery</b>	<b>4,276</b>	<b>4,279</b>	<b>+2</b>	<b>+0.1%</b>	<b>+86</b>	<b>+28</b>
Therapy Professions	572	581.69	+9	+1.6%	+20	+27
Health Science/ Diagnostics	7	6.92	+0	+4.7%	-0	+1
Social Care	91	91.32	+1	+0.7%	-0	-2
Social Workers	147	146.31	-1	-0.4%	+4	-6
Psychologists	75	74.77	-1	-0.9%	-3	-1
Pharmacy	13	12.96	+0	+0.3%	+2	+3
H&SC, Other	23	23.96	+0	+2.1%	-4	-4
<b>Health &amp; Social Care Professionals</b>	<b>928</b>	<b>938</b>	<b>+10</b>	<b>+1.0%</b>	<b>+19</b>	<b>+18</b>
Management (VIII & above)	123	124.50	+2	+1.2%	+7	+24
Administrative/ Supervisory (V to VII)	301	303.59	+3	+0.9%	+17	+30
Clerical (III & IV)	734	735.71	+2	+0.3%	+14	+26
<b>Management &amp; Administrative</b>	<b>1,158</b>	<b>1,164</b>	<b>+6</b>	<b>+0.5%</b>	<b>+37</b>	<b>+79</b>
Support	803	809.24	+6	+0.8%	-6	-27
Maintenance/ Technical	109	109.64	+0	+0.4%	+0	-2
<b>General Support</b>	<b>912</b>	<b>919</b>	<b>+7</b>	<b>+0.7%</b>	<b>-5</b>	<b>-29</b>
Health Care Assistants	5,350	5,563.05	+213	+4.0%	+225	+103
Home Help	3,425	3,255.10	-170	-5.0%	-296	-332
Care, other	246	249.46	+3	+1.2%	+4	-10

Patient & Client Care	9,022	9,068	+45	+0.5%	-66	-239
-----------------------	-------	-------	-----	-------	-----	------

## Section 38

May 2020 (Dec 2019 figure: 15,107)	WTE Apr 2020	WTE May 2020	WTE change since Apr 20	% change since Apr 20	WTE change since Dec 19	WTE change since May 19
<b>Overall</b>	<b>15,061</b>	<b>15,093</b>	<b>+32</b>	<b>+0.2%</b>	<b>-15</b>	<b>+233</b>
Consultants	17	16.65	+0	+0.5%	-0	+2
Registrars	12	11.54	-1	-7.0%	-1	-2
SHO/ Interns	11	9.05	-2	-17.3%	-3	-2
Medical/ Dental, other	10	10.59	+0	+2.6%	+1	+0
<b>Medical &amp; Dental</b>	<b>50</b>	<b>48</b>	<b>-2</b>	<b>-4.8%</b>	<b>-4</b>	<b>-1</b>
Nurse/ Midwife Manager	692	692.24	+1	+0.1%	+3	+1
Nurse/ Midwife Specialist & AN/MP	47	47.49	+1	+1.2%	-1	-0
Staff Nurse/ Staff Midwife	1,942	1,943.55	+1	+0.1%	-13	+3
Pre-registration Nurse/ Midwife Intern	21		-21	-100.0%	-25	-50
Pre-registration Nurse Intern (COVID-19)	57	117.37	+60	+104.8%	+117	+117
Post-registration Nurse/ Midwife Student		4.00	+4	-100.0%	+4	+4
Nursing/ Midwifery Student	78	121.37	+43	+55.4%	+96	+72
Nursing/ Midwifery other	17	17.34	+0	+0.1%	+3	+4
<b>Nursing &amp; Midwifery</b>	<b>2,776</b>	<b>2,822</b>	<b>+46</b>	<b>+1.6%</b>	<b>+88</b>	<b>+79</b>
Therapy Professions	495	498.18	+3	+0.6%	+7	+25
Health Science/ Diagnostics	17	17.00			-2	-2
Social Care	2,508	2,495.77	-13	-0.5%	-10	+43
Social Workers	177	177.58	+0	+0.2%	+3	-2
Psychologists	141	140.52	-1	-0.5%	+12	+11
Pharmacy	11	11.58	+0	+3.9%	+0	+1
H&SC, Other	58	57.37	-0	-0.4%	-1	-2
<b>Health &amp; Social Care Professionals</b>	<b>3,408</b>	<b>3,398</b>	<b>-10</b>	<b>-0.3%</b>	<b>+9</b>	<b>+74</b>
Management (VIII & above)	136	138.12	+2	+1.4%	+1	+2
Administrative/ Supervisory (V to VII)	368	365.02	-3	-0.9%	+8	+11
Clerical (III & IV)	516	516.28	+0	+0.1%	+7	+0
<b>Management &amp; Administrative</b>	<b>1,021</b>	<b>1,019</b>	<b>-1</b>	<b>-0.1%</b>	<b>+16</b>	<b>+13</b>
<b>General Support</b>	<b>877</b>	<b>869</b>	<b>-8</b>	<b>-0.9%</b>	<b>+7</b>	<b>-14</b>
<b>Patient &amp; Client Care</b>	<b>6,929</b>	<b>6,937</b>	<b>+8</b>	<b>+0.1%</b>	<b>-130</b>	<b>+82</b>



# Social Care Services Employment by Care Group & Administration (HSE / S38): May 2020

## Social Care

May 2020 (Dec 2019 figure: 31,535)	WTE Apr 2020	WTE May 2020	WTE change since Apr 20	% change since Apr 20	WTE change since Dec 19	WTE change since May 19
<b>Overall</b>	<b>31,476</b>	<b>31,578</b>	<b>+102</b>	<b>+0.3%</b>	<b>+43</b>	<b>+92</b>
HSE	3,942	3,947	+5	+0.1%	+44	+70
Section 38	14,317	14,354	+37	+0.3%	-46	+212
<b>Disabilities</b>	<b>18,258</b>	<b>18,300</b>	<b>+42</b>	<b>+0.2%</b>	<b>-2</b>	<b>+282</b>
HSE	12,474	12,538	+64	+0.5%	+14	-211
Section 38	744	739	-5	-0.6%	+31	+21
<b>Older People</b>	<b>13,217</b>	<b>13,277</b>	<b>+60</b>	<b>+0.5%</b>	<b>+45</b>	<b>-190</b>

## Disabilities

May 2020 (Dec 2019 figure: 18,303)	WTE Apr 2020	WTE May 2020	WTE change since Apr 20	% change since Apr 20	WTE change since Dec 19	WTE change since May 19
<b>Overall</b>	<b>18,258</b>	<b>18,300</b>	<b>+42</b>	<b>+0.2%</b>	<b>-2</b>	<b>+282</b>
Consultants	23	23	-0	-1.0%	-1	+0
Registrars	10	10	-1	-8.4%	-3	-3
SHO/ Interns	8	6	-2	-23.8%	-1	+0
Medical/ Dental, other	15	15	+0	+1.8%	+1	+0
<b>Medical &amp; Dental</b>	<b>56</b>	<b>53</b>	<b>-3</b>	<b>-4.9%</b>	<b>-5</b>	<b>-2</b>
Nurse/ Midwife Manager	889	890	+0	+0.0%	-4	+0
Nurse/ Midwife Specialist & AN/MP	62	62	+1	+0.9%	+0	+1
Staff Nurse/ Staff Midwife	2,536	2,532	-4	-0.2%	-40	-27
Public Health Nurse	6	6	+1	+9.9%	-0	+0
Pre-registration Nurse/ Midwife Intern	52	7	-45	-86.6%	-28	-64
Pre-registration Nurse Intern (COVID-19)	63	159	+96	+153.5%	+159	+159
Post-registration Nurse/ Midwife Student		4	+4	-100.0%	+4	+4
Nursing/ Midwifery awaiting registration	15	11	-4	-26.7%	+11	+11
Nursing/ Midwifery Student	130	181	+51	+39.3%	+139	+110
Nursing/ Midwifery other	26	26	+0	+0.9%	+4	+5
<b>Nursing &amp; Midwifery</b>	<b>3,648</b>	<b>3,697</b>	<b>+49</b>	<b>+1.3%</b>	<b>+98</b>	<b>+88</b>
Therapy Professions	769	778	+9	+1.2%	+14	+48
Health Science/ Diagnostics	19	19	+0	+1.7%	-1	-1
Social Care	2,596	2,584	-12	-0.5%	-11	+41
Social Workers	226	227	+1	+0.6%	+8	+2
Psychologists	215	213	-1	-0.6%	+9	+9
Pharmacy	6	7	+0	+4.2%	-0	+1
H&SC, Other	80	80	+0	+0.3%	-5	-5
<b>Health &amp; Social Care Professionals</b>	<b>3,910</b>	<b>3,909</b>	<b>-2</b>	<b>-0.0%</b>	<b>+14</b>	<b>+96</b>
Management (VIII & above)	184	191	+6	+3.4%	+11	+16
Administrative/ Supervisory (V to VII)	501	501	-0	-0.1%	+22	+32
Clerical (III & IV)	677	678	+1	+0.1%	+18	+26
<b>Management &amp; Administrative</b>	<b>1,362</b>	<b>1,369</b>	<b>+7</b>	<b>+0.5%</b>	<b>+50</b>	<b>+75</b>
Support	737	731	-6	-0.8%	-3	-27
Maintenance/ Technical	128	127	-2	-1.4%	+2	-3
<b>General Support</b>	<b>865</b>	<b>858</b>	<b>-7</b>	<b>-0.9%</b>	<b>-1</b>	<b>-30</b>
Health Care Assistants	6,717	6,731	+14	+0.2%	-95	+57
Home Help	100	96	-4	-3.8%	-12	-17

Care, other	1,599	1,587	-11	-0.7%	-52	+14
<b>Patient &amp; Client Care</b>	<b>8,416</b>	<b>8,415</b>	<b>-1</b>	<b>-0.0%</b>	<b>-160</b>	<b>+54</b>

## Older People

May 2020 (Dec 2019 figure: 13,233)	WTE Apr 2020	WTE May 2020	WTE change since Apr 20	% change since Apr 20	WTE change since Dec 19	WTE change since May 19
<b>Overall</b>	<b>13,217</b>	<b>13,277</b>	<b>+60</b>	<b>+0.5%</b>	<b>+45</b>	<b>-190</b>
Consultants	4	4			+1	+1
Registrars	11	11			+1	+0
SHO/ Interns	13	13	+0	+2.8%	-2	-1
Medical/ Dental, other	85	85	-0	-0.6%	-12	+2
<b>Medical &amp; Dental</b>	<b>112</b>	<b>112</b>	<b>-0</b>	<b>-0.1%</b>	<b>-12</b>	<b>+1</b>
Nurse/ Midwife Manager	728	730	+2	+0.2%	+21	+19
Nurse/ Midwife Specialist & AN/MP	31	32	+1	+4.4%	+6	+8
Staff Nurse/ Staff Midwife	2,620	2,622	+2	+0.1%	+46	-12
Public Health Nurse	13	13	+0	+0.1%	-0	-1
Post-registration Nurse/ Midwife Student	1	1			+1	+1
Nursing/ Midwifery awaiting registration	9	3	-6	-64.1%	+3	+3
Nursing/ Midwifery Student	10	4	-6	-57.9%	+2	+4
Nursing/ Midwifery other	2	2			+1	
<b>Nursing &amp; Midwifery</b>	<b>3,404</b>	<b>3,404</b>	<b>-1</b>	<b>-0.0%</b>	<b>+75</b>	<b>+18</b>
Therapy Professions	299	302	+3	+1.0%	+13	+3
Health Science/ Diagnostics	5	5	-0	-0.2%	-1	-0
Social Care	3	3	-0	-1.8%	-0	+0
Social Workers	98	97	-2	-1.6%	-2	-10
Psychologists	2	2	-0	-2.4%	-0	+2
Pharmacy	18	18	+0	+1.2%	+3	+3
H&SC, Other	1	1				-1
<b>Health &amp; Social Care Professionals</b>	<b>426</b>	<b>427</b>	<b>+2</b>	<b>+0.4%</b>	<b>+13</b>	<b>-3</b>
Management (VIII & above)	75	72	-3	-3.8%	-3	+9
Administrative/ Supervisory (V to VII)	168	168	-0	-0.2%	+3	+8
Clerical (III & IV)	573	574	+1	+0.2%	+3	+0
<b>Management &amp; Administrative</b>	<b>816</b>	<b>814</b>	<b>-2</b>	<b>-0.2%</b>	<b>+3</b>	<b>+18</b>
Support	826	832	+7	+0.8%	+3	-11
Maintenance/ Technical	99	98	-1	-0.9%	-1	-2
<b>General Support</b>	<b>924</b>	<b>930</b>	<b>+6</b>	<b>+0.6%</b>	<b>+3</b>	<b>-13</b>
Health Care Assistants	4,068	4,286	+219	+5.4%	+243	+110
Home Help	3,325	3,159	-167	-5.0%	-283	-315
Care, other	142	145	+3	+1.9%	+3	-6
<b>Patient &amp; Client Care</b>	<b>7,535</b>	<b>7,590</b>	<b>+55</b>	<b>+0.7%</b>	<b>-37</b>	<b>-211</b>

## Social Care Services Employment by CHO etc. May 2020

### CHO 1

May 2020 (Dec 2019 figure: 3,334)	WTE Apr 2020	WTE May 2020	WTE change since Apr 20	% change since Apr 20	WTE change since Dec 19	WTE change since May 19
<b>Overall</b>	<b>3,354</b>	<b>3,358</b>	<b>+4</b>	<b>+0.1%</b>	<b>+24</b>	<b>-9</b>
Consultants				-100.0%		-1
Medical/ Dental, other	20	20			-12	+3
<b>Medical &amp; Dental</b>	<b>20</b>	<b>20</b>			<b>-12</b>	<b>+2</b>
Nurse/ Midwife Manager	193	194	+0	+0.2%	-2	-7
Nurse/ Midwife Specialist & AN/MP	16	16	+0	+0.0%	+2	+4
Staff Nurse/ Staff Midwife	631	628	-3	-0.5%	-3	-13
Pre-registration Nurse/ Midwife Intern	25	7	-18	-72.3%	-4	-4
Pre-registration Nurse Intern (COVID-19)		21	+21	-100.0%	+21	+21
Nursing/ Midwifery awaiting registration	11	11			+11	+11
Nursing/ Midwifery Student	36	39	+2	+6.8%	+25	+28
Nursing/ Midwifery other	5	5	+0	+1.3%	+0	+0
<b>Nursing &amp; Midwifery</b>	<b>882</b>	<b>882</b>	<b>-0</b>	<b>-0.0%</b>	<b>+22</b>	<b>+12</b>
Therapy Professions	59	58	-1	-1.2%	+5	+9
Health Science/ Diagnostics	1	1			-0	-0
Social Care	9	8	-0	-1.5%	+1	+0
Social Workers	37	37	-0	-0.4%	+4	+6
Psychologists	5	5	+0	+3.5%	+0	+2
H&SC, Other	9	9	+0	+2.0%	-3	-4
<b>Health &amp; Social Care Professionals</b>	<b>119</b>	<b>119</b>	<b>-1</b>	<b>-0.5%</b>	<b>+6</b>	<b>+14</b>
Management (VIII & above)	22	23	+1	+4.6%	+1	+1
Administrative/ Supervisory (V to VII)	48	50	+2	+3.3%	+8	+9
Clerical (III & IV)	133	131	-2	-1.7%	-4	+0
<b>Management &amp; Administrative</b>	<b>203</b>	<b>203</b>	<b>+0</b>	<b>+0.1%</b>	<b>+5</b>	<b>+11</b>
Support	174	169	-5	-2.8%	-3	-5
Maintenance/ Technical	13	13				
<b>General Support</b>	<b>187</b>	<b>182</b>	<b>-5</b>	<b>-2.6%</b>	<b>-3</b>	<b>-5</b>
Health Care Assistants	1,328	1,349	+21	+1.6%	+24	+0
Home Help	549	539	-11	-2.0%	-18	-38
Care, other	65	64	-1	-1.0%	-0	-4
<b>Patient &amp; Client Care</b>	<b>1,942</b>	<b>1,952</b>	<b>+10</b>	<b>+0.5%</b>	<b>+6</b>	<b>-42</b>

## CHO 2

May 2020 (Dec 2019 figure: 3,103)	WTE Apr 2020	WTE May 2020	WTE change since Apr 20	% change since Apr 20	WTE change since Dec 19	WTE change since May 19
<b>Overall</b>	<b>2,983</b>	<b>3,033</b>	<b>+50</b>	<b>+1.7%</b>	<b>-69</b>	<b>-20</b>
Consultants	4	4			+0	+1
Registrars	2	2				
Medical/ Dental, other	12	12			-1	-1
<b>Medical &amp; Dental</b>	<b>17</b>	<b>17</b>			<b>-0</b>	<b>-0</b>
Nurse/ Midwife Manager	139	141	+2	+1.2%	+5	+1
Nurse/ Midwife Specialist & AN/MP	7	8	+0	+4.3%	-0	+1
Staff Nurse/ Staff Midwife	472	468	-4	-0.8%	+1	-3
Public Health Nurse	1	1			+0	+0
<b>Nursing &amp; Midwifery</b>	<b>619</b>	<b>617</b>	<b>-2</b>	<b>-0.3%</b>	<b>+7</b>	<b>-1</b>
Therapy Professions	62	61	-1	-1.7%	-6	-6
Health Science/ Diagnostics	1	1				
Social Care	231	232	+1	+0.6%	+10	+17
Social Workers	36	36	-1	-2.3%	-1	-1
Psychologists	16	16	-0	-0.1%	-0	-2
Pharmacy	1	1				+1
H&SC, Other	14	14			-2	-3
<b>Health &amp; Social Care Professionals</b>	<b>361</b>	<b>360</b>	<b>-1</b>	<b>-0.2%</b>	<b>+2</b>	<b>+6</b>
Management (VIII & above)	17	17			-1	+1
Administrative/ Supervisory (V to VII)	49	48	-1	-1.9%	+0	-2
Clerical (III & IV)	119	121	+1	+1.1%	-1	-4
<b>Management &amp; Administrative</b>	<b>185</b>	<b>186</b>	<b>+0</b>	<b>+0.2%</b>	<b>-1</b>	<b>-5</b>
Support	94	95	+1	+0.8%	-6	-11
Maintenance/ Technical	32	32	-0	-0.2%	-0	-1
<b>General Support</b>	<b>126</b>	<b>127</b>	<b>+1</b>	<b>+0.6%</b>	<b>-6</b>	<b>-12</b>
Health Care Assistants	1,103	1,149	+46	+4.2%	+10	+18
Home Help	424	429	+5	+1.1%	-71	-25
Care, other	148	149	+1	+0.6%	-10	+0
<b>Patient &amp; Client Care</b>	<b>1,674</b>	<b>1,726</b>	<b>+51</b>	<b>+3.1%</b>	<b>-70</b>	<b>-7</b>

### CHO 3

May 2020 (Dec 2019 figure: 2,798)	WTE Apr 2020	WTE May 2020	WTE change since Apr 20	% change since Apr 20	WTE change since Dec 19	WTE change since May 19
<b>Overall</b>	<b>2,810</b>	<b>2,838</b>	<b>+28</b>	<b>+1.0%</b>	<b>+40</b>	<b>+66</b>
Consultants	2	2	+0	+4.2%	+0	-0
Medical/ Dental, other	6	6				
<b>Medical &amp; Dental</b>	<b>8</b>	<b>8</b>	<b>+0</b>	<b>+1.1%</b>	<b>+0</b>	<b>-0</b>
Nurse/ Midwife Manager	141	143	+2	+1.7%	+4	+5
Nurse/ Midwife Specialist & AN/MP	13	13			-2	+1
Staff Nurse/ Staff Midwife	486	477	-8	-1.7%	-9	-20
Public Health Nursing	1	1			+1	+1
Public Health Nurse	1	1				+1
Pre-registration Nurse/ Midwife Intern				-100.0%	-7	-7
Pre-registration Nurse Intern (COVID-19)	24	24	+0	+0.4%	+24	+24
Nursing/ Midwifery Student	24	24	+0	+0.4%	+12	+17
Nursing/ Midwifery other	4	4				-0
<b>Nursing &amp; Midwifery</b>	<b>668</b>	<b>662</b>	<b>-6</b>	<b>-0.9%</b>	<b>+6</b>	<b>+4</b>
Therapy Professions	104	104	+0	+0.0%	+2	+1
Health Science/ Diagnostics	2	2	+0	+19.7%	+1	+1
Social Care	240	254	+14	+5.7%	+13	+10
Social Workers	24	23	-1	-3.0%	-1	-4
Psychologists	19	21	+2	+8.2%	+5	+4
Pharmacy	1	1				
H&SC, Other	12	12	+0	+4.1%	+0	+0
<b>Health &amp; Social Care Professionals</b>	<b>402</b>	<b>417</b>	<b>+15</b>	<b>+3.8%</b>	<b>+21</b>	<b>+13</b>
Management (VIII & above)	13	13	-1	-4.4%	+0	+2
Administrative/ Supervisory (V to VII)	61	60	-0	-0.7%	-1	+3
Clerical (III & IV)	111	110	-0	-0.1%	+2	+3
<b>Management &amp; Administrative</b>	<b>185</b>	<b>184</b>	<b>-1</b>	<b>-0.6%</b>	<b>+1</b>	<b>+8</b>
Support	118	118	-1	-0.7%	+1	-3
Maintenance/ Technical	37	36	-0	-1.3%	-0	-0
<b>General Support</b>	<b>155</b>	<b>154</b>	<b>-1</b>	<b>-0.8%</b>	<b>+0</b>	<b>-3</b>
Health Care Assistants	1,029	1,076	+47	+4.6%	+33	+41
Home Help	177	154	-23	-12.9%	-21	+0
Care, other	187	183	-4	-1.9%	+0	+4
<b>Patient &amp; Client Care</b>	<b>1,393</b>	<b>1,414</b>	<b>+21</b>	<b>+1.5%</b>	<b>+12</b>	<b>+45</b>



## CHO 4

May 2020 (Dec 2019 figure: 5,358)	WTE Apr 2020	WTE May 2020	WTE change since Apr 20	% change since Apr 20	WTE change since Dec 19	WTE change since May 19
<b>Overall</b>	<b>5,393</b>	<b>5,415</b>	<b>+21</b>	<b>+0.4%</b>	<b>+57</b>	<b>+0</b>
Consultants	3	3	-0	-11.7%		
Registrars	3	3				+1
SHO/ Interns				-100.0%	-1	-1
Medical/ Dental, other	23	23	-0	-1.9%	+2	+1
<b>Medical &amp; Dental</b>	<b>29</b>	<b>28</b>	<b>-1</b>	<b>-2.7%</b>	<b>+1</b>	<b>+1</b>
Nurse/ Midwife Manager	210	211	+1	+0.4%	+4	+28
Nurse/ Midwife Specialist & AN/MP	18	19	+1	+5.4%	+2	+0
Staff Nurse/ Staff Midwife	839	841	+1	+0.2%	+17	-35
Public Health Nurse	5	5	+0	+2.0%	+0	-1
Pre-registration Nurse/ Midwife Intern	8		-8	-100.0%	-8	-11
Pre-registration Nurse Intern (COVID-19)		27	+27	-100.0%	+27	+27
Post-registration Nurse/ Midwife Student	1	1			+1	+1
Nursing/ Midwifery awaiting registration				-100.0%		
Nursing/ Midwifery Student	9	28	+20	+233.9%	+19	+18
Nursing/ Midwifery other	1	1				
<b>Nursing &amp; Midwifery</b>	<b>1,081</b>	<b>1,104</b>	<b>+23</b>	<b>+2.2%</b>	<b>+42</b>	<b>+10</b>
Therapy Professions	151	150	-1	-0.8%	-3	-4
Health Science/ Diagnostics	1	1			+0	+0
Social Care	232	228	-4	-1.6%	-0	+3
Social Workers	37	37	+0	+0.8%	-1	-1
Psychologists	34	33	-0	-0.4%	-1	-1
Pharmacy	4	4	+0	+1.9%	+1	+1
H&SC, Other	9	9	-0	-0.5%	+0	+1
<b>Health &amp; Social Care Professionals</b>	<b>467</b>	<b>462</b>	<b>-5</b>	<b>-1.0%</b>	<b>-3</b>	<b>-1</b>
Management (VIII & above)	35	37	+1	+3.6%	+2	+8
Administrative/ Supervisory (V to VII)	72	72	+0	+0.4%	+2	+13
Clerical (III & IV)	217	219	+3	+1.2%	+7	-3
<b>Management &amp; Administrative</b>	<b>324</b>	<b>328</b>	<b>+4</b>	<b>+1.3%</b>	<b>+11</b>	<b>+18</b>
Support	244	251	+7	+2.9%	+10	+11
Maintenance/ Technical	16	16			+0	-1
<b>General Support</b>	<b>260</b>	<b>268</b>	<b>+7</b>	<b>+2.7%</b>	<b>+10</b>	<b>+10</b>
Health Care Assistants	1,791	1,838	+47	+2.6%	+62	+26
Home Help	1,114	1,062	-52	-4.6%	-52	-69
Care, other	327	324	-3	-1.0%	-14	+5
<b>Patient &amp; Client Care</b>	<b>3,232</b>	<b>3,224</b>	<b>-8</b>	<b>-0.2%</b>	<b>-3</b>	<b>-39</b>

## CHO 5

May 2020 (Dec 2019 figure: 3,152)	WTE Apr 2020	WTE May 2020	WTE change since Apr 20	% change since Apr 20	WTE change since Dec 19	WTE change since May 19
<b>Overall</b>	<b>3,125</b>	<b>3,080</b>	<b>-46</b>	<b>-1.5%</b>	<b>-73</b>	<b>-60</b>
Consultants	1	1				-0
Medical/ Dental, other	9	9	-0	-0.3%	-1	-0
<b>Medical &amp; Dental</b>	<b>10</b>	<b>10</b>	<b>-0</b>	<b>-0.3%</b>	<b>-1</b>	<b>-0</b>
Nurse/ Midwife Manager	153	150	-3	-2.1%	+2	-6
Nurse/ Midwife Specialist & AN/MP	4	4			-0	-0
Staff Nurse/ Staff Midwife	490	487	-2	-0.5%	+2	+31
Public Health Nurse	9	9	+1	+6.6%	-0	-1
<i>Pre-registration Nurse/ Midwife Intern</i>	2		-2	-100.0%		-11
<i>Pre-registration Nurse Intern (COVID-19)</i>	4	11	+8	+209.2%	+11	+11
<i>Post-registration Nurse/ Midwife Student</i>		4	+4	-100.0%	+4	+4
<i>Nursing/ Midwifery awaiting registration</i>	4		-4	-100.0%		
Nursing/ Midwifery Student	10	15	+6	+57.6%	+13	+4
<b>Nursing &amp; Midwifery</b>	<b>665</b>	<b>665</b>	<b>+1</b>	<b>+0.1%</b>	<b>+18</b>	<b>+28</b>
Therapy Professions	100	102	+1	+1.4%	-2	+2
Social Care	141	138	-2	-1.7%	-16	-16
Social Workers	27	27	+0	+0.8%	+3	+0
Psychologists	13	13	-0	-3.7%	-1	+1
<i>Pharmacy</i>	1	1	-0	-11.0%	+1	+1
Pharmacy	1	1	-0	-11.0%	+1	+1
H&SC, Other	7	7	-0	-0.3%	-0	-0
<b>Health &amp; Social Care Professionals</b>	<b>289</b>	<b>288</b>	<b>-1</b>	<b>-0.5%</b>	<b>-15</b>	<b>-11</b>
Management (VIII & above)	16	17	+1	+6.3%	+2	+3
Administrative/ Supervisory (V to VII)	55	54	-1	-1.7%	+1	+2
Clerical (III & IV)	89	90	+1	+0.7%	-3	-0
<b>Management &amp; Administrative</b>	<b>160</b>	<b>161</b>	<b>+1</b>	<b>+0.4%</b>	<b>+1</b>	<b>+5</b>
Support	129	132	+3	+2.4%	-7	-16
Maintenance/ Technical	16	15	-0	-1.9%	-0	-2
<b>General Support</b>	<b>144</b>	<b>147</b>	<b>+3</b>	<b>+1.9%</b>	<b>-7</b>	<b>-17</b>
Health Care Assistants	1,075	1,105	+30	+2.8%	+43	+85
Home Help	627	546	-80	-12.8%	-115	-160
Care, other	156	158	+2	+1.3%	+3	+10
<b>Patient &amp; Client Care</b>	<b>1,857</b>	<b>1,809</b>	<b>-48</b>	<b>-2.6%</b>	<b>-68</b>	<b>-64</b>

## CHO 6

May 2020 (Dec 2019 figure: 2,021)	WTE Apr 2020	WTE May 2020	WTE change since Apr 20	% change since Apr 20	WTE change since Dec 19	WTE change since May 19
<b>Overall</b>	<b>1,976</b>	<b>1,997</b>	<b>+20</b>	<b>+1.0%</b>	<b>-24</b>	<b>+11</b>
Consultants	3	3				
Registrars	1	1				-1
Medical/ Dental, other	5	5				
<b>Medical &amp; Dental</b>	<b>9</b>	<b>9</b>				<b>-1</b>
Nurse/ Midwife Manager	110	110	-0	-0.2%	-2	-0
Nurse/ Midwife Specialist & AN/MP	1	1				
Staff Nurse/ Staff Midwife	345	345	+0	+0.0%	-6	-8
<b>Nursing &amp; Midwifery</b>	<b>456</b>	<b>456</b>	<b>-0</b>	<b>-0.0%</b>	<b>-8</b>	<b>-8</b>
Therapy Professions	85	85	+0	+0.4%	-6	+2
Social Care	317	309	-8	-2.7%	-26	-18
Social Workers	19	20	+1	+5.8%	-3	-6
Psychologists	17	17	+0	+1.1%	+1	+5
Pharmacy	3	3	-0	-2.1%	-0	-0
H&SC, Other	2	1	-1	-49.8%	-1	-0
<b>Health &amp; Social Care Professionals</b>	<b>443</b>	<b>435</b>	<b>-8</b>	<b>-1.8%</b>	<b>-34</b>	<b>-18</b>
Management (VIII & above)	34	34	+1	+2.7%	-0	+3
Administrative/ Supervisory (V to VII)	76	76	+0	+0.1%	+1	+5
Clerical (III & IV)	92	92	+0	+0.1%	+9	+8
<b>Management &amp; Administrative</b>	<b>202</b>	<b>203</b>	<b>+1</b>	<b>+0.6%</b>	<b>+9</b>	<b>+17</b>
Support	146	143	-3	-1.9%	+12	+8
Maintenance/ Technical	17	17	-0	-0.5%	+2	+5
<b>General Support</b>	<b>163</b>	<b>160</b>	<b>-3</b>	<b>-1.8%</b>	<b>+14</b>	<b>+14</b>
Health Care Assistants	467	498	+31	+6.6%	+11	+15
Care, other	237	237	-0	-0.2%	-17	-8
<b>Patient &amp; Client Care</b>	<b>704</b>	<b>734</b>	<b>+30</b>	<b>+4.3%</b>	<b>-6</b>	<b>+7</b>

## CHO 7

May 2020 (Dec 2019 figure: 3,978)	WTE Apr 2020	WTE May 2020	WTE change since Apr 20	% change since Apr 20	WTE change since Dec 19	WTE change since May 19
<b>Overall</b>	<b>3,994</b>	<b>3,987</b>	<b>-7</b>	<b>-0.2%</b>	<b>+10</b>	<b>+16</b>
Consultants	1	1				
Registrars	3	3	-1	-25.5%	-0	-2
SHO/ Interns	9	7	-2	-21.1%	-2	-1
Medical/ Dental, other	5	5				-1
<b>Medical &amp; Dental</b>	<b>18</b>	<b>15</b>	<b>-3</b>	<b>-15.4%</b>	<b>-2</b>	<b>-3</b>
Nurse/ Midwife Manager	200	197	-3	-1.5%	-2	-6
Nurse/ Midwife Specialist & AN/MP	8	9	+0	+5.9%	+1	-1
Staff Nurse/ Staff Midwife	590	607	+17	+2.9%	+14	+19
<i>Pre-registration Nurse/ Midwife Intern</i>	1		-1	-100.0%		-8
<i>Pre-registration Nurse Intern (COVID-19)</i>	7	15	+8	+114.3%	+15	+15
<i>Nursing/ Midwifery awaiting registration</i>	9	3	-6	-64.1%	+3	+3
Nursing/ Midwifery Student	17	18	+2	+9.2%	+18	+11
Nursing/ Midwifery other	1	1				
<b>Nursing &amp; Midwifery</b>	<b>816</b>	<b>832</b>	<b>+16</b>	<b>+2.0%</b>	<b>+32</b>	<b>+24</b>
Therapy Professions	145	152	+8	+5.2%	+17	+18
Health Science/ Diagnostics	3	3				
Social Care	360	356	-4	-1.2%	-5	+10
Social Workers	49	48	-1	-1.8%	+4	+1
Psychologists	30	30	+0	+0.1%	+2	-3
Pharmacy	7	8	+0	+3.6%	+0	+1
H&SC, Other	3	3				-1
<b>Health &amp; Social Care Professionals</b>	<b>596</b>	<b>599</b>	<b>+3</b>	<b>+0.5%</b>	<b>+18</b>	<b>+26</b>
Management (VIII & above)	44	45	+1	+2.6%	+8	+7
Administrative/ Supervisory (V to VII)	94	95	+1	+0.8%	+5	+1
Clerical (III & IV)	135	135	+0	+0.4%	+9	+13
<b>Management &amp; Administrative</b>	<b>273</b>	<b>275</b>	<b>+2</b>	<b>+0.9%</b>	<b>+22</b>	<b>+21</b>
Support	270	271	+1	+0.2%	-6	-16
Maintenance/ Technical	33	31	-2	-6.0%	+1	-3
<b>General Support</b>	<b>303</b>	<b>302</b>	<b>-1</b>	<b>-0.4%</b>	<b>-5</b>	<b>-18</b>
Health Care Assistants	1,467	1,446	-21	-1.4%	-54	-48
Home Help	136	133	-3	-2.1%	+6	+6
Care, other	384	384	+0	+0.0%	-7	+9
<b>Patient &amp; Client Care</b>	<b>1,987</b>	<b>1,963</b>	<b>-24</b>	<b>-1.2%</b>	<b>-54</b>	<b>-33</b>

## CHO 8

May 2020 (Dec 2019 figure: 3,650)	WTE Apr 2020	WTE May 2020	WTE change since Apr 20	% change since Apr 20	WTE change since Dec 19	WTE change since May 19
<b>Overall</b>	<b>3,654</b>	<b>3,686</b>	<b>+32</b>	<b>+0.9%</b>	<b>+36</b>	<b>+26</b>
Consultants	1	1				
Registrars	1	1			-1	-1
Medical/ Dental, other	12	12				-0
<b>Medical &amp; Dental</b>	<b>14</b>	<b>14</b>			<b>-1</b>	<b>-1</b>
Nurse/ Midwife Manager	199	202	+2	+1.1%	+2	+1
Nurse/ Midwife Specialist & AN/MP	10	10	+0	+0.9%	+1	+1
Staff Nurse/ Staff Midwife	570	570	+0	+0.0%	+2	+1
Public Health Nurse	3	3			+0	-0
Pre-registration Nurse/ Midwife Intern	12		-12	-100.0%	-1	-12
Pre-registration Nurse Intern (COVID-19)	8	31	+23	+285.9%	+31	+31
Nursing/ Midwifery Student	20	31	+11	+56.8%	+31	+20
Nursing/ Midwifery other	8	8	+0	+0.2%	+3	+2
<b>Nursing &amp; Midwifery</b>	<b>811</b>	<b>825</b>	<b>+14</b>	<b>+1.7%</b>	<b>+39</b>	<b>+24</b>
Therapy Professions	113	115	+2	+1.7%	+3	+10
Health Science/ Diagnostics	2	2				
Social Care	367	367	-0	-0.1%	+6	+1
Social Workers	29	29	+0	+1.0%	-1	-2
Psychologists	24	23	-1	-2.9%	-2	+0
Pharmacy	2	2	+0	+2.9%	-0	+1
H&SC, Other	7	7	-0	-1.9%	-0	+0
<b>Health &amp; Social Care Professionals</b>	<b>544</b>	<b>545</b>	<b>+1</b>	<b>+0.2%</b>	<b>+5</b>	<b>+9</b>
Management (VIII & above)	17	17	+0	+2.4%	+3	+4
Administrative/ Supervisory (V to VII)	82	80	-2	-2.3%	+4	+8
Clerical (III & IV)	158	159	+1	+0.9%	+5	+14
<b>Management &amp; Administrative</b>	<b>256</b>	<b>256</b>	<b>-0</b>	<b>-0.0%</b>	<b>+11</b>	<b>+26</b>
Support	73	75	+2	+2.3%	+3	+0
Maintenance/ Technical	40	40	+0	+0.7%	-0	-1
<b>General Support</b>	<b>113</b>	<b>115</b>	<b>+2</b>	<b>+1.7%</b>	<b>+3</b>	<b>-0</b>
Health Care Assistants	1,383	1,407	+24	+1.7%	+7	+18
Home Help	399	392	-6	-1.6%	-26	-46
Care, other	134	133	-2	-1.3%	-3	-4
<b>Patient &amp; Client Care</b>	<b>1,916</b>	<b>1,931</b>	<b>+16</b>	<b>+0.8%</b>	<b>-22</b>	<b>-32</b>

## CHO 9

May 2020 (Dec 2019 figure: 4,064)	WTE Apr 2020	WTE May 2020	WTE change since Apr 20	% change since Apr 20	WTE change since Dec 19	WTE change since May 19
<b>Overall</b>	<b>4,113</b>	<b>4,112</b>	<b>-1</b>	<b>-0.0%</b>	<b>+48</b>	<b>+67</b>
Consultants	13	13			-1	+1
Registrars	11	11			-1	+0
SHO/ Interns	12	12	+0	+3.0%		+1
Medical/ Dental, other	7	8	+0	+3.7%	+1	+0
<b>Medical &amp; Dental</b>	<b>43</b>	<b>44</b>	<b>+1</b>	<b>+1.4%</b>	<b>-1</b>	<b>+3</b>
Nurse/ Midwife Manager	270	271	+1	+0.3%	+5	+4
Nurse/ Midwife Specialist & AN/MP	15	15	+0	+0.4%	+2	+3
Staff Nurse/ Staff Midwife	733	731	-2	-0.3%	-13	-12
Public Health Nurse	0		-0	-100.0%	-0	-0
Pre-registration Nurse/ Midwife Intern	5		-5	-100.0%	-9	-13
Pre-registration Nurse Intern (COVID-19)	20	30	+9	+45.7%	+30	+30
Nursing/ Midwifery Student	25	30	+4	+16.9%	+22	+17
Nursing/ Midwifery other	10	10	+0	+1.4%	+2	+3
<b>Nursing &amp; Midwifery</b>	<b>1,054</b>	<b>1,057</b>	<b>+3</b>	<b>+0.3%</b>	<b>+17</b>	<b>+15</b>
Therapy Professions	248	252	+4	+1.6%	+17	+19
Health Science/ Diagnostics	14	14			-2	-3
Social Care	703	695	-8	-1.1%	+5	+34
Social Workers	67	68	+0	+0.7%	+2	-1
Psychologists	60	58	-2	-3.3%	+5	+4
Pharmacy	5	5	+0	+4.8%	+0	+0
H&SC, Other	19	20	+1	+4.4%	+1	+1
<b>Health &amp; Social Care Professionals</b>	<b>1,116</b>	<b>1,112</b>	<b>-4</b>	<b>-0.4%</b>	<b>+27</b>	<b>+55</b>
Management (VIII & above)	45	44	-1	-2.2%	-3	-1
Administrative/ Supervisory (V to VII)	106	107	+1	+0.5%	+4	+2
Clerical (III & IV)	166	165	-1	-0.6%	-1	-3
<b>Management &amp; Administrative</b>	<b>317</b>	<b>315</b>	<b>-1</b>	<b>-0.4%</b>	<b>+1</b>	<b>-2</b>
Support	313	309	-4	-1.2%	-4	-8
Maintenance/ Technical	24	24	+0	+0.0%	-0	-3
<b>General Support</b>	<b>338</b>	<b>334</b>	<b>-4</b>	<b>-1.1%</b>	<b>-4</b>	<b>-11</b>
Health Care Assistants	1,143	1,150	+7	+0.6%	+11	+13
Care, other	103	101	-2	-1.9%	-3	-5
<b>Patient &amp; Client Care</b>	<b>1,246</b>	<b>1,251</b>	<b>+5</b>	<b>+0.4%</b>	<b>+9</b>	<b>+8</b>

## other Community Services

May 2020 (Dec 2019 figure: 78)	WTE Apr 2020	WTE May 2020	WTE change since Apr 20	% change since Apr 20	WTE change since Dec 19	WTE change since May 19
<b>Overall</b>	<b>74</b>	<b>72</b>	<b>-2</b>	<b>-2.0%</b>	<b>-6</b>	<b>-6</b>
Health Science/ Diagnostics				-100.0%	-1	
<b>Health &amp; Social Care Professionals</b>				<b>-100.0%</b>	<b>-1</b>	
Management (VIII & above)	18	17	-1	-4.3%	-3	-3
Administrative/ Supervisory (V to VII)	25	25	+0	+0.9%	+1	-1
Clerical (III & IV)	31	30	-1	-3.1%	-3	-3
<b>Management &amp; Administrative</b>	<b>74</b>	<b>72</b>	<b>-2</b>	<b>-2.0%</b>	<b>-5</b>	<b>-6</b>
Health Care Assistants	0	0			+0	
<b>Patient &amp; Client Care</b>	<b>0</b>	<b>0</b>			<b>+0</b>	

## Social Care Services Employment by CHO & Admin : May 2020

May 2020 (Dec 2019 figure: 31,535)	WTE Apr 2020	WTE May 2020	WTE change since Apr 20	% change since Apr 20	WTE change since Dec 19	WTE change since May 19
<b>Overall</b>	<b>31,476</b>	<b>31,578</b>	<b>+102</b>	<b>+0.3%</b>	<b>+43</b>	<b>+92</b>
<b>CHO 1</b>	<b>3,354</b>	<b>3,358</b>	<b>+4</b>	<b>+0.1%</b>	<b>+24</b>	<b>-9</b>
Health Service Executive	1,749	1,779	+29	+1.7%	-36	-38
Bros. of Charity, West Region	1,234	1,254	+21	+1.7%	-34	+18
Section 38 Voluntary Agencies	1,234	1,254	+21	+1.7%	-34	+18
<b>CHO 2</b>	<b>2,983</b>	<b>3,033</b>	<b>+50</b>	<b>+1.7%</b>	<b>-69</b>	<b>-20</b>
Health Service Executive	1,099	1,093	-7	-0.6%	-4	+7
Bros. of Charity, Clare	322	327	+4	+1.4%	-21	+1
Bros. of Charity, Limerick	528	555	+27	+5.2%	+35	+35
Daughters of Charity, Limerick	569	570	+1	+0.3%	+27	+23
Daughters of Charity, Roscrea	291	293	+2	+0.7%	+3	-0
Section 38 Voluntary Agencies	1,710	1,745	+35	+2.1%	+44	+59
<b>CHO 3</b>	<b>2,810</b>	<b>2,838</b>	<b>+28</b>	<b>+1.0%</b>	<b>+40</b>	<b>+66</b>
Health Service Executive	3,257	3,258	+1	+0.0%	+46	-5
Bros. of Charity, Southern	736	730	-6	-0.8%	-10	-7
Cope Foundation	1,091	1,118	+26	+2.4%	+27	+7
St. John of God, Kerry	309	310	+1	+0.2%	-6	+6
Section 38 Voluntary Agencies	2,136	2,157	+21	+1.0%	+11	+6
<b>CHO 4</b>	<b>5,393</b>	<b>5,415</b>	<b>+21</b>	<b>+0.4%</b>	<b>+57</b>	<b>+0</b>
Health Service Executive	2,012	1,974	-38	-1.9%	-55	-78
Bros. of Charity, Waterford	615	610	-5	-0.7%	-20	+9
Carriglea Cairde Services	212	210	-1	-0.5%	-4	+5
St. Patrick's, Kilkenny	287	285	-1	-0.5%	+6	+5
Section 38 Voluntary Agencies	1,113	1,106	-7	-0.6%	-18	+18
<b>CHO 5</b>	<b>3,125</b>	<b>3,080</b>	<b>-46</b>	<b>-1.5%</b>	<b>-73</b>	<b>-60</b>
Health Service Executive	568	599	+31	+5.4%	+24	+49
Children's Sunshine Home	58	57	-1	-1.7%	-2	-2
Leopardstown Park Hospital	205	205	+0	+0.1%	-6	-6
Royal Hospital, Donnybrook, Dublin	276	277	+1	+0.4%	+5	-5
St. John of God (IDS)	449	447	-1	-0.3%	-9	+4
Sunbeam House Services	422	413	-9	-2.1%	-36	-29
Section 38 Voluntary Agencies	1,408	1,398	-10	-0.7%	-48	-39
<b>CHO 6</b>	<b>1,976</b>	<b>1,997</b>	<b>+20</b>	<b>+1.0%</b>	<b>-24</b>	<b>+11</b>
Health Service Executive	1,131	1,138	+6	+0.6%	+41	+9
Section 38 Voluntary Agencies	2,863	2,849	-13	-0.5%	-32	+8
<b>CHO 7</b>	<b>3,994</b>	<b>3,987</b>	<b>-7</b>	<b>-0.2%</b>	<b>+10</b>	<b>+16</b>
Health Service Executive	2,092	2,116	+23	+1.1%	+17	-7
Section 38 Voluntary Agencies	1,561	1,570	+9	+0.6%	+19	+32
<b>CHO 8</b>	<b>3,654</b>	<b>3,686</b>	<b>+32</b>	<b>+0.9%</b>	<b>+36</b>	<b>+26</b>
Health Service Executive	1,078	1,100	+22	+2.0%	+5	-64
Central Remedial Clinic	286	284	-2	-0.6%	+5	+8
Daughters of Charity, Dublin	1,072	1,073	+1	+0.1%	+39	+70
Incorporated Orthopaedic Hospital	264	258	-6	-2.2%	+32	+33
St. Michael's House, Dublin	1,414	1,398	-16	-1.1%	-33	+21



May 2020 (Dec 2019 figure: 31,535)	WTE Apr 2020	WTE May 2020	WTE change since Apr 20	% change since Apr 20	WTE change since Dec 19	WTE change since May 19
<b>Overall</b>	<b>31,476</b>	<b>31,578</b>	<b>+102</b>	<b>+0.3%</b>	<b>+43</b>	<b>+92</b>
Section 38 Voluntary Agencies	3,035	3,012	-23	-0.8%	+43	+132
<b>CHO 9</b>	<b>4,113</b>	<b>4,112</b>	<b>-1</b>	<b>-0.0%</b>	<b>+48</b>	<b>+67</b>
other Community Services	74	72	-2	-2.0%	-6	-6

## Disability Services Employment by CHO & Admin: May 2020

May 2020 (Dec 2019 figure: 18,303)	WTE Apr 2020	WTE May 2020	WTE change since Apr 20	% change since Apr 20	WTE change since Dec 19	WTE change since May 19
<b>Overall</b>	<b>18,258</b>	<b>18,300</b>	<b>+42</b>	<b>+0.2%</b>	<b>-2</b>	<b>+282</b>
<b>CHO 1</b>	<b>1,526</b>	<b>1,522</b>	<b>-3</b>	<b>-0.2%</b>	<b>+24</b>	<b>+23</b>
<b>Health Service Executive</b>	<b>206</b>	<b>209</b>	<b>+4</b>	<b>+1.8%</b>	<b>+1</b>	<b>-2</b>
Bros. of Charity, West Region	1,234	1,254	+21	+1.7%	-34	+18
<b>Section 38 Voluntary Agencies</b>	<b>1,234</b>	<b>1,254</b>	<b>+21</b>	<b>+1.7%</b>	<b>-34</b>	<b>+18</b>
<b>CHO 2</b>	<b>1,439</b>	<b>1,464</b>	<b>+24</b>	<b>+1.7%</b>	<b>-33</b>	<b>+16</b>
<b>Health Service Executive</b>	<b>126</b>	<b>127</b>	<b>+1</b>	<b>+1.0%</b>	<b>+5</b>	<b>+4</b>
Bros. of Charity, Clare	322	327	+4	+1.4%	-21	+1
Bros. of Charity, Limerick	528	555	+27	+5.2%	+35	+35
Daughters of Charity, Limerick	569	570	+1	+0.3%	+27	+23
Daughters of Charity, Roscrea	291	293	+2	+0.7%	+3	-0
<b>Section 38 Voluntary Agencies</b>	<b>1,710</b>	<b>1,745</b>	<b>+35</b>	<b>+2.1%</b>	<b>+44</b>	<b>+59</b>
<b>CHO 3</b>	<b>1,836</b>	<b>1,873</b>	<b>+36</b>	<b>+2.0%</b>	<b>+49</b>	<b>+63</b>
<b>Health Service Executive</b>	<b>302</b>	<b>301</b>	<b>-1</b>	<b>-0.3%</b>	<b>+9</b>	<b>+12</b>
Bros. of Charity, Southern	736	730	-6	-0.8%	-10	-7
Cope Foundation	1,091	1,118	+26	+2.4%	+27	+7
St. John of God, Kerry	309	309	+1	+0.2%	-6	+6
<b>Section 38 Voluntary Agencies</b>	<b>2,136</b>	<b>2,157</b>	<b>+21</b>	<b>+1.0%</b>	<b>+11</b>	<b>+6</b>
<b>CHO 4</b>	<b>2,438</b>	<b>2,458</b>	<b>+20</b>	<b>+0.8%</b>	<b>+20</b>	<b>+17</b>
<b>Health Service Executive</b>	<b>381</b>	<b>380</b>	<b>-1</b>	<b>-0.3%</b>	<b>-2</b>	<b>+23</b>
Bros. of Charity, Waterford	615	610	-5	-0.7%	-20	+9
Carriglea Cairde Services	212	210	-1	-0.5%	-4	+5
St. Patrick's, Kilkenny	287	285	-1	-0.5%	+6	+5
<b>Section 38 Voluntary Agencies</b>	<b>1,113</b>	<b>1,106</b>	<b>-7</b>	<b>-0.6%</b>	<b>-18</b>	<b>+18</b>
<b>CHO 5</b>	<b>1,494</b>	<b>1,485</b>	<b>-8</b>	<b>-0.6%</b>	<b>-20</b>	<b>+42</b>
<b>Health Service Executive</b>	<b>231</b>	<b>231</b>	<b>+0</b>	<b>+0.2%</b>	<b>-2</b>	<b>+14</b>
Children's Sunshine Home	58	57	-1	-1.7%	-2	-2
St. John of God (IDS)	449	447	-1	-0.3%	-9	+4
Sunbeam House Services	422	413	-9	-2.1%	-36	-29
<b>Section 38 Voluntary Agencies</b>	<b>928</b>	<b>917</b>	<b>-11</b>	<b>-1.2%</b>	<b>-47</b>	<b>-27</b>
<b>CHO 6</b>	<b>1,159</b>	<b>1,148</b>	<b>-11</b>	<b>-0.9%</b>	<b>-50</b>	<b>-14</b>
<b>Health Service Executive</b>	<b>115</b>	<b>120</b>	<b>+5</b>	<b>+4.8%</b>	<b>+20</b>	<b>+26</b>
Cheeverstown House	399	395	-4	-0.9%	-1	-11
Kare, Newbridge, Co Kildare	362	352	-11	-2.9%	-8	+15
Peamount Hospital (Newcastle)	485	486	+1	+0.3%	-0	+8
Stewart's Hospital, (Palmerstown)	863	871	+7	+0.9%	+19	-12
St. John of God Liffey Services	754	746	-8	-1.0%	-41	+9
<b>Section 38 Voluntary Agencies</b>	<b>2,863</b>	<b>2,849</b>	<b>-13</b>	<b>-0.5%</b>	<b>-32</b>	<b>+8</b>
<b>CHO 7</b>	<b>2,978</b>	<b>2,970</b>	<b>-8</b>	<b>-0.3%</b>	<b>-12</b>	<b>+33</b>
<b>Health Service Executive</b>	<b>605</b>	<b>605</b>	<b>+0</b>	<b>+0.0%</b>	<b>-5</b>	<b>+6</b>
Muiriosa Foundation, Laois/Offaly	300	299	-1	-0.2%	-2	+2
Muiriosa Foundation, Longford/Westmeath	272	274	+2	+0.7%	+4	+3
Muiriosa Foundation, South Kildare	348	352	+4	+1.1%	+19	+19
St. John of God, Drumcar	641	645	+4	+0.6%	-1	+8

May 2020 (Dec 2019 figure: 18,303)	WTE Apr 2020	WTE May 2020	WTE change since Apr 20	% change since Apr 20	WTE change since Dec 19	WTE change since May 19
<b>Overall</b>	<b>18,258</b>	<b>18,300</b>	<b>+42</b>	<b>+0.2%</b>	<b>-2</b>	<b>+282</b>
<b>Section 38 Voluntary Agencies</b>	<b>1,561</b>	<b>1,570</b>	<b>+9</b>	<b>+0.6%</b>	<b>+19</b>	<b>+32</b>
<b>CHO 8</b>	<b>2,167</b>	<b>2,176</b>	<b>+9</b>	<b>+0.4%</b>	<b>+14</b>	<b>+38</b>
<b>Health Service Executive</b>	<b>446</b>	<b>445</b>	<b>-0</b>	<b>-0.1%</b>	<b>-5</b>	<b>-36</b>
Central Remedial Clinic	286	284	-2	-0.6%	+5	+8
Daughters of Charity, Dublin	1,072	1,073	+1	+0.1%	+39	+70
St. Michael's House, Dublin	1,414	1,398	-16	-1.1%	-33	+21
<b>Section 38 Voluntary Agencies</b>	<b>2,771</b>	<b>2,754</b>	<b>-17</b>	<b>-0.6%</b>	<b>+11</b>	<b>+99</b>
<b>CHO 9</b>	<b>3,217</b>	<b>3,200</b>	<b>-18</b>	<b>-0.5%</b>	<b>+6</b>	<b>+63</b>
<b>other Community Services</b>	<b>5</b>	<b>5</b>				

## Older Persons Services Employment by CHO & Admin: May 2020

May 2020 (Dec 2019 figure: 13,232)	WTE Apr 2020	WTE May 2020	WTE change since Apr 20	% change since Apr 20	WTE change since Dec 19	WTE change since May 19
<b>Overall</b>	<b>13,217</b>	<b>13,277</b>	<b>+60</b>	<b>+0.5%</b>	<b>+45</b>	<b>-190</b>
<b>CHO 1</b>	<b>1,828</b>	<b>1,836</b>	<b>+8</b>	<b>+0.4%</b>	<b>-0</b>	<b>-32</b>
<b>CHO 2</b>	<b>1,544</b>	<b>1,569</b>	<b>+26</b>	<b>+1.7%</b>	<b>-36</b>	<b>-36</b>
<b>CHO 3</b>	<b>973</b>	<b>965</b>	<b>-8</b>	<b>-0.8%</b>	<b>-9</b>	<b>+3</b>
<b>CHO 4</b>	<b>2,955</b>	<b>2,957</b>	<b>+2</b>	<b>+0.1%</b>	<b>+37</b>	<b>-17</b>
<b>CHO 5</b>	<b>1,632</b>	<b>1,594</b>	<b>-37</b>	<b>-2.3%</b>	<b>-53</b>	<b>-101</b>
<b>Health Service Executive</b>	<b>337</b>	<b>367</b>	<b>+30</b>	<b>+8.9%</b>	<b>+26</b>	<b>+36</b>
Leopardstown Park Hospital	205	205	+0	+0.1%	-6	-6
Royal Hospital, Donnybrook, Dublin	276	277	+1	+0.4%	+5	-5
<b>Section 38 Voluntary Agencies</b>	<b>480</b>	<b>481</b>	<b>+1</b>	<b>+0.3%</b>	<b>-1</b>	<b>-11</b>
<b>CHO 6</b>	<b>817</b>	<b>849</b>	<b>+31</b>	<b>+3.8%</b>	<b>+25</b>	<b>+24</b>
<b>CHO 7</b>	<b>1,016</b>	<b>1,017</b>	<b>+1</b>	<b>+0.1%</b>	<b>+21</b>	<b>-17</b>
<b>CHO 8</b>	<b>1,487</b>	<b>1,510</b>	<b>+23</b>	<b>+1.6%</b>	<b>+22</b>	<b>-12</b>
<b>Health Service Executive</b>	<b>632</b>	<b>654</b>	<b>+22</b>	<b>+3.5%</b>	<b>+10</b>	<b>-28</b>
Incorporated Orthopaedic Hospital	264	258	-6	-2.2%	+32	+33
<b>Section 38 Voluntary Agencies</b>	<b>264</b>	<b>258</b>	<b>-6</b>	<b>-2.2%</b>	<b>+32</b>	<b>+33</b>
<b>CHO 9</b>	<b>896</b>	<b>912</b>	<b>+16</b>	<b>+1.8%</b>	<b>+42</b>	<b>+4</b>
<b>other Community Services</b>	<b>69</b>	<b>67</b>	<b>-1</b>	<b>-2.2%</b>	<b>-6</b>	<b>-6</b>

## Social Care Services Employment by CHO etc. May 2020

Bros. of Charity, Clare

May 2020 (Dec 2019 figure: 348)	WTE Apr 2020	WTE May 2020	WTE change since Apr 20	% change since Apr 20	WTE change since Dec 19	WTE change since May 19
<b>Overall</b>	<b>322</b>	<b>327</b>	<b>+4</b>	<b>+1.4%</b>	<b>-21</b>	<b>+1</b>
Consultants	0	0	+0	+75.0%	+0	+0
<b>Medical &amp; Dental</b>	<b>0</b>	<b>0</b>	<b>+0</b>	<b>+75.0%</b>	<b>+0</b>	<b>+0</b>
Nurse/ Midwife Manager				-100.0%		
Staff Nurse/ Staff Midwife	2	2			+0	+0
<i>Pre-registration Nurse Intern (COVID-19)</i>	1	1	+0	+14.3%	+1	+1
Nursing/ Midwifery Student	1	1	+0	+14.3%	+1	+1
<b>Nursing &amp; Midwifery</b>	<b>2</b>	<b>3</b>	<b>+0</b>	<b>+3.6%</b>	<b>+1</b>	<b>+1</b>
Social Care	77	79	+2	+2.3%	-3	-7
Social Workers	3	2	-1	-34.5%	-1	-1
Psychologists	3	3				
H&SC, Other	4	4			-0	-1
<b>Health &amp; Social Care Professionals</b>	<b>86</b>	<b>87</b>	<b>+1</b>	<b>+0.9%</b>	<b>-5</b>	<b>-9</b>
Management (VIII & above)	1	1				
Administrative/ Supervisory (V to VII)	5	5			+0	+0
Clerical (III & IV)	5	5			+1	+1
<b>Management &amp; Administrative</b>	<b>11</b>	<b>11</b>			<b>+1</b>	<b>+1</b>
Health Care Assistants	190	195	+4	+2.3%	-18	+6
Care, other	32	31	-1	-2.6%	-1	+2
<b>Patient &amp; Client Care</b>	<b>223</b>	<b>226</b>	<b>+3</b>	<b>+1.6%</b>	<b>-18</b>	<b>+8</b>

May 2020 (Dec 2019 figure: 520)	WTE Apr 2020	WTE May 2020	WTE change since Apr 20	% change since Apr 20	WTE change since Dec 19	WTE change since May 19
<b>Overall</b>	<b>528</b>	<b>555</b>	<b>+27</b>	<b>+5.2%</b>	<b>+35</b>	<b>+35</b>
Consultants	1	1				-0
<b>Medical &amp; Dental</b>	<b>1</b>	<b>1</b>				<b>-0</b>
Nurse/ Midwife Manager	26	30	+4	+13.7%	+5	+6
Nurse/ Midwife Specialist & AN/MP	4	4			-1	+1
Staff Nurse/ Staff Midwife	87	85	-2	-2.3%	+1	+0
<b>Nursing &amp; Midwifery</b>	<b>117</b>	<b>119</b>	<b>+2</b>	<b>+1.4%</b>	<b>+5</b>	<b>+7</b>
Therapy Professions	13	14	+1	+7.0%	+2	+1
Social Care	87	94	+7	+7.9%	+9	+12
Social Workers	5	5	-0	-0.4%	+0	-1
Psychologists	6	6	+0	+0.7%	+0	+0
H&SC, Other	1	2	+0	+44.1%	+1	+1
<b>Health &amp; Social Care Professionals</b>	<b>112</b>	<b>120</b>	<b>+8</b>	<b>+7.4%</b>	<b>+12</b>	<b>+14</b>
Management (VIII & above)	2	2				
Administrative/ Supervisory (V to VII)	6	6	+0	+1.8%	+0	-1
Clerical (III & IV)	12	11	-1	-9.0%	-2	-2
<b>Management &amp; Administrative</b>	<b>19</b>	<b>19</b>	<b>-1</b>	<b>-4.9%</b>	<b>-2</b>	<b>-3</b>
Support	6	5	-1	-14.6%	-2	-3
Maintenance/ Technical	2	2			-0	-0
<b>General Support</b>	<b>8</b>	<b>7</b>	<b>-1</b>	<b>-11.1%</b>	<b>-2</b>	<b>-3</b>
Health Care Assistants	178	200	+22	+12.3%	+21	+16
Care, other	91	89	-3	-2.8%	+1	+3
<b>Patient &amp; Client Care</b>	<b>269</b>	<b>289</b>	<b>+19</b>	<b>+7.2%</b>	<b>+22</b>	<b>+19</b>

May 2020 (Dec 2019 figure: 740)	WTE Apr 2020	WTE May 2020	WTE change since Apr 20	% change since Apr 20	WTE change since Dec 19	WTE change since May 19
<b>Overall</b>	<b>736</b>	<b>730</b>	<b>-6</b>	<b>-0.8%</b>	<b>-10</b>	<b>-7</b>
Nurse/ Midwife Manager	15	15	+0	+1.0%	+0	-2
Nurse/ Midwife Specialist & AN/MP	3	3				-2
Staff Nurse/ Staff Midwife	59	58	-2	-2.6%	-1	-2
<b>Nursing &amp; Midwifery</b>	<b>77</b>	<b>76</b>	<b>-1</b>	<b>-1.8%</b>	<b>-1</b>	<b>-7</b>
Therapy Professions	45	46	+1	+2.0%	-2	+1
Social Care	126	125	-1	-0.7%	+1	+0
Social Workers	17	18	+0	+1.7%	+0	-0
Psychologists	19	18	-0	-0.6%	-1	-1
<b>Health &amp; Social Care Professionals</b>	<b>207</b>	<b>207</b>	<b>+0</b>	<b>+0.1%</b>	<b>-2</b>	<b>+1</b>
Management (VIII & above)	8	8			+0	+0
Administrative/ Supervisory (V to VII)	10	10			+1	+1
Clerical (III & IV)	36	34	-2	-4.8%	+1	-2
<b>Management &amp; Administrative</b>	<b>54</b>	<b>52</b>	<b>-2</b>	<b>-3.2%</b>	<b>+2</b>	<b>-1</b>
Support	15	15	-0	-0.8%	+0	+1
Maintenance/ Technical	2	2				-1
<b>General Support</b>	<b>16</b>	<b>16</b>	<b>-0</b>	<b>-0.7%</b>	<b>+0</b>	<b>-0</b>
Health Care Assistants	207	206	-1	-0.6%	-1	-1
Care, other	175	173	-2	-1.1%	-9	+1
<b>Patient &amp; Client Care</b>	<b>382</b>	<b>379</b>	<b>-3</b>	<b>-0.8%</b>	<b>-9</b>	<b>+0</b>

May 2020 (Dec 2019 figure: 630)	WTE Apr 2020	WTE May 2020	WTE change since Apr 20	% change since Apr 20	WTE change since Dec 19	WTE change since May 19
<b>Overall</b>	<b>615</b>	<b>610</b>	<b>-5</b>	<b>-0.7%</b>	<b>-20</b>	<b>+9</b>
Consultants	1	1				-0
<b>Medical &amp; Dental</b>	<b>1</b>	<b>1</b>				<b>-0</b>
Nurse/ Midwife Manager	23	21	-2	-8.0%	-3	-2
Staff Nurse/ Staff Midwife	48	46	-3	-5.5%	-2	+4
<i>Pre-registration Nurse/ Midwife Intern</i>				-100.0%		-6
<i>Pre-registration Nurse Intern (COVID-19)</i>	4	7	+4	+98.1%	+7	+7
Nursing/ Midwifery Student	4	7	+4	+98.1%	+7	+1
<b>Nursing &amp; Midwifery</b>	<b>75</b>	<b>74</b>	<b>-1</b>	<b>-1.3%</b>	<b>+2</b>	<b>+3</b>
Therapy Professions	3	3				+1
Social Care	65	65	+0	+0.7%	-1	+0
Social Workers	10	10				
Psychologists	4	4			-0	+1
H&SC, Other	4	4			-0	-0
<b>Health &amp; Social Care Professionals</b>	<b>85</b>	<b>85</b>	<b>+0</b>	<b>+0.5%</b>	<b>-2</b>	<b>+1</b>
Management (VIII & above)	5	5			+0	+1
Administrative/ Supervisory (V to VII)	16	16			+3	+4
Clerical (III & IV)	24	24	-0	-0.0%	-2	-1
<b>Management &amp; Administrative</b>	<b>45</b>	<b>45</b>	<b>-0</b>	<b>-0.0%</b>	<b>+2</b>	<b>+5</b>
Support	2	2	+0	+10.9%	+0	+0
Maintenance/ Technical	3	3				
<b>General Support</b>	<b>5</b>	<b>5</b>	<b>+0</b>	<b>+3.8%</b>	<b>+0</b>	<b>+0</b>
Health Care Assistants	315	309	-7	-2.1%	-22	-4
Care, other	89	91	+2	+2.7%	+0	+4
<b>Patient &amp; Client Care</b>	<b>404</b>	<b>400</b>	<b>-4</b>	<b>-1.0%</b>	<b>-22</b>	<b>-0</b>



May 2020 (Dec 2019 figure: 214)	WTE Apr 2020	WTE May 2020	WTE change since Apr 20	% change since Apr 20	WTE change since Dec 19	WTE change since May 19
<b>Overall</b>	<b>212</b>	<b>210</b>	<b>-1</b>	<b>-0.5%</b>	<b>-4</b>	<b>+5</b>
Nurse/ Midwife Manager	13	13			+1	+0
Staff Nurse/ Staff Midwife	25	24	-1	-3.8%	-2	+1
Pre-registration Nurse/ Midwife Intern	2		-2	-100.0%		-2
Post-registration Nurse/ Midwife Student		4	+4	-100.0%	+4	+4
Nursing/ Midwifery Student	2	4	+2	+100.0%	+4	+2
<b>Nursing &amp; Midwifery</b>	<b>40</b>	<b>41</b>	<b>+1</b>	<b>+2.6%</b>	<b>+3</b>	<b>+3</b>
Social Care	34	33	-1	-3.0%	-4	-0
<b>Health &amp; Social Care Professionals</b>	<b>34</b>	<b>33</b>	<b>-1</b>	<b>-3.0%</b>	<b>-4</b>	<b>-0</b>
Management (VIII & above)	2	2				
Administrative/ Supervisory (V to VII)	3	3			+0	
Clerical (III & IV)	6	6	+0	+0.3%	-1	-1
<b>Management &amp; Administrative</b>	<b>11</b>	<b>11</b>	<b>+0</b>	<b>+0.2%</b>	<b>-1</b>	<b>-1</b>
Support	5	5				
Maintenance/ Technical	1	1				-1
<b>General Support</b>	<b>6</b>	<b>6</b>				<b>-1</b>
Health Care Assistants	72	72	+0	+0.4%	-2	+1
Care, other	49	48	-2	-3.1%	-1	+3
<b>Patient &amp; Client Care</b>	<b>121</b>	<b>120</b>	<b>-1</b>	<b>-1.0%</b>	<b>-3</b>	<b>+4</b>

## Central Remedial Clinic

May 2020 (Dec 2019 figure: 278)	WTE Apr 2020	WTE May 2020	WTE change since Apr 20	% change since Apr 20	WTE change since Dec 19	WTE change since May 19
<b>Overall</b>	<b>286</b>	<b>284</b>	<b>-2</b>	<b>-0.6%</b>	<b>+5</b>	<b>+8</b>
Consultants	1	1				
Medical/ Dental, other	0	0				
<b>Medical &amp; Dental</b>	<b>2</b>	<b>2</b>				
Nurse/ Midwife Manager	2	2				
Nurse/ Midwife Specialist & AN/MP	1	1				-1
Staff Nurse/ Staff Midwife	4	4			+1	+1
Nursing/ Midwifery other	1	1			+1	+1
<b>Nursing &amp; Midwifery</b>	<b>8</b>	<b>8</b>			<b>+2</b>	<b>+1</b>
Therapy Professions	78	77	-1	-1.3%	-1	+4
Health Science/ Diagnostics	13	13			-2	-2
Social Workers	9	9			+1	+1
Psychologists	11	11			+0	+0
<b>Health &amp; Social Care Professionals</b>	<b>110</b>	<b>109</b>	<b>-1</b>	<b>-0.9%</b>	<b>-2</b>	<b>+4</b>
Management (VIII & above)	7	6	-1	-14.3%	-1	-1
Administrative/ Supervisory (V to VII)	15	15	+0	+0.0%	+0	
Clerical (III & IV)	33	33			+0	+0
<b>Management &amp; Administrative</b>	<b>55</b>	<b>54</b>	<b>-1</b>	<b>-1.8%</b>	<b>-1</b>	<b>-1</b>
Support	14	14			+0	+0
Maintenance/ Technical	1	1				
<b>General Support</b>	<b>15</b>	<b>15</b>			<b>+0</b>	<b>+0</b>
Health Care Assistants	56	57	+0	+0.6%	+6	+3
Care, other	39	39				+0
<b>Patient &amp; Client Care</b>	<b>95</b>	<b>95</b>	<b>+0</b>	<b>+0.4%</b>	<b>+6</b>	<b>+3</b>

May 2020 (Dec 2019 figure: 396)	WTE Apr 2020	WTE May 2020	WTE change since Apr 20	% change since Apr 20	WTE change since Dec 19	WTE change since May 19
<b>Overall</b>	<b>399</b>	<b>395</b>	<b>-4</b>	<b>-0.9%</b>	<b>-1</b>	<b>-11</b>
Consultants	0	0				
Medical/ Dental, other	1	1				
<b>Medical &amp; Dental</b>	<b>1</b>	<b>1</b>				
Nurse/ Midwife Manager	28	28	-1	-1.8%	+2	-1
Nurse/ Midwife Specialist & AN/MP	2	2				
Staff Nurse/ Staff Midwife	104	103	-1	-0.8%	-4	-6
<b>Nursing &amp; Midwifery</b>	<b>133</b>	<b>132</b>	<b>-1</b>	<b>-1.0%</b>	<b>-3</b>	<b>-7</b>
Therapy Professions	12	13	+1	+6.0%	-1	-1
Social Care	36	35	-1	-1.8%	+0	-1
Social Workers	6	6				
Psychologists	5	5			+1	+1
Pharmacy	0	0			-0	-0
H&SC, Other	2	2				
<b>Health &amp; Social Care Professionals</b>	<b>61</b>	<b>61</b>	<b>+0</b>	<b>+0.1%</b>	<b>+1</b>	<b>-1</b>
Management (VIII & above)	2	2				-1
Administrative/ Supervisory (V to VII)	14	15	+1	+7.2%		+0
Clerical (III & IV)	12	11	-1	-8.1%	+0	+1
<b>Management &amp; Administrative</b>	<b>28</b>	<b>28</b>	<b>-0</b>	<b>-0.0%</b>	<b>+0</b>	<b>-0</b>
Support	27	27			-0	+1
Maintenance/ Technical	4	4				
<b>General Support</b>	<b>30</b>	<b>30</b>				<b>+1</b>
Health Care Assistants	133	131	-3	-1.9%	+1	-3
Care, other	12	12				-1
<b>Patient &amp; Client Care</b>	<b>145</b>	<b>143</b>	<b>-3</b>	<b>-1.8%</b>	<b>+1</b>	<b>-4</b>

## Children's Sunshine Home

May 2020 (Dec 2019 figure: 58)	WTE Apr 2020	WTE May 2020	WTE change since Apr 20	% change since Apr 20	WTE change since Dec 19	WTE change since May 19
<b>Overall</b>	<b>58</b>	<b>57</b>	<b>-1</b>	<b>-1.7%</b>	<b>-2</b>	<b>-2</b>
Nurse/ Midwife Manager	8	8			+1	
Staff Nurse/ Staff Midwife	19	19			-2	-1
<b>Nursing &amp; Midwifery</b>	<b>27</b>	<b>27</b>			<b>-1</b>	<b>-1</b>
Therapy Professions	2	2				+0
Social Workers	1	1				
<b>Health &amp; Social Care Professionals</b>	<b>3</b>	<b>3</b>				<b>+0</b>
Management (VIII & above)	3	2	-1	-33.3%	-1	-1
Administrative/ Supervisory (V to VII)	4	4				+1
<i>General Administrative (III &amp; IV)</i>	1	1			+1	+1
Clerical (III & IV)	1	1				+1
<b>Management &amp; Administrative</b>	<b>8</b>	<b>7</b>	<b>-1</b>	<b>-13.0%</b>	<b>-1</b>	<b>+1</b>
Support	3	3				-1
<b>General Support</b>	<b>3</b>	<b>3</b>				<b>-1</b>
Health Care Assistants	14	14			-0	+1
Care, other	3	3			-0	-1
<b>Patient &amp; Client Care</b>	<b>17</b>	<b>17</b>			<b>-0</b>	<b>-1</b>

May 2020 (Dec 2019 figure: 1,091)	WTE Apr 2020	WTE May 2020	WTE change since Apr 20	% change since Apr 20	WTE change since Dec 19	WTE change since May 19
<b>Overall</b>	<b>1,091</b>	<b>1,118</b>	<b>+26</b>	<b>+2.4%</b>	<b>+27</b>	<b>+7</b>
Nurse/ Midwife Manager	41	41				
Nurse/ Midwife Specialist & AN/MP	10	10				
Staff Nurse/ Staff Midwife	169	168	-1	-0.7%	-1	+0
Pre-registration Nurse/ Midwife Intern	7		-7	-100.0%	-8	-9
Pre-registration Nurse Intern (COVID-19)		25	+25	-100.0%	+25	+25
Nursing/ Midwifery Student	7	25	+19	+290.5%	+19	+17
Nursing/ Midwifery other	1	1				
<b>Nursing &amp; Midwifery</b>	<b>227</b>	<b>245</b>	<b>+18</b>	<b>+7.8%</b>	<b>+18</b>	<b>+17</b>
Therapy Professions	37	37	-1	-2.1%	-1	+0
Social Care	34	34			+2	-0
Social Workers	9	9				
Psychologists	11	11			+1	+1
H&SC, Other	3	3				
<b>Health &amp; Social Care Professionals</b>	<b>94</b>	<b>93</b>	<b>-1</b>	<b>-0.9%</b>	<b>+3</b>	<b>+1</b>
Management (VIII & above)	6	7	+1	+17.9%	+1	+1
Administrative/ Supervisory (V to VII)	19	19				
Clerical (III & IV)	23	25	+2	+8.5%	+2	+2
<b>Management &amp; Administrative</b>	<b>48</b>	<b>51</b>	<b>+3</b>	<b>+6.2%</b>	<b>+3</b>	<b>+3</b>
Support	77	77			+0	+6
Maintenance/ Technical	6	6				
<b>General Support</b>	<b>83</b>	<b>83</b>				<b>+6</b>
Health Care Assistants	560	568	+8	+1.4%	+5	-26
Care, other	79	78	-1	-1.7%	-1	+6
<b>Patient &amp; Client Care</b>	<b>640</b>	<b>646</b>	<b>+6</b>	<b>+1.0%</b>	<b>+3</b>	<b>-20</b>

## Daughters of Charity, Dublin

May 2020 (Dec 2019 figure: 1,034)	WTE Apr 2020	WTE May 2020	WTE change since Apr 20	% change since Apr 20	WTE change since Dec 19	WTE change since May 19
<b>Overall</b>	<b>1,072</b>	<b>1,073</b>	<b>+1</b>	<b>+0.1%</b>	<b>+39</b>	<b>+70</b>
Consultants	2	2			+1	+1
Medical/ Dental, other	2	2				
<b>Medical &amp; Dental</b>	<b>4</b>	<b>4</b>			<b>+1</b>	<b>+1</b>
Nurse/ Midwife Manager	62	62			-0	+3
Nurse/ Midwife Specialist & AN/MP	9	9			+1	+2
Staff Nurse/ Staff Midwife	187	187	-1	-0.3%	+1	+2
<i>Pre-registration Nurse/ Midwife Intern</i>				-100.0%	-8	-8
<i>Pre-registration Nurse Intern (COVID-19)</i>	15	15			+15	+15
Nursing/ Midwifery Student	15	15			+8	+8
Nursing/ Midwifery other	4	4				+1
<b>Nursing &amp; Midwifery</b>	<b>277</b>	<b>277</b>	<b>-1</b>	<b>-0.2%</b>	<b>+9</b>	<b>+15</b>
Therapy Professions	34	34			+1	+1
Social Care	168	164	-4	-2.4%	+1	+8
Social Workers	11	11			+1	+1
Psychologists	9	10	+1	+10.7%	+3	+2
Pharmacy	2	2				
H&SC, Other	5	5			+1	+1
<b>Health &amp; Social Care Professionals</b>	<b>228</b>	<b>225</b>	<b>-3</b>	<b>-1.3%</b>	<b>+6</b>	<b>+12</b>
Management (VIII & above)	6	7	+1	+16.7%	+1	
Administrative/ Supervisory (V to VII)	27	27			+2	+0
Clerical (III & IV)	32	32			-1	-1
<b>Management &amp; Administrative</b>	<b>65</b>	<b>66</b>	<b>+1</b>	<b>+1.5%</b>	<b>+2</b>	<b>-1</b>
Support	79	78	-1	-1.6%	-1	+2
Maintenance/ Technical	8	8				-2
<b>General Support</b>	<b>87</b>	<b>86</b>	<b>-1</b>	<b>-1.4%</b>	<b>-1</b>	<b>-0</b>
Health Care Assistants	379	384	+5	+1.4%	+22	+46
Care, other	32	31	-1	-3.0%	-1	-2
<b>Patient &amp; Client Care</b>	<b>411</b>	<b>415</b>	<b>+4</b>	<b>+1.1%</b>	<b>+22</b>	<b>+44</b>

## Daughters of Charity, Limerick

May 2020 (Dec 2019 figure: 543)	WTE Apr 2020	WTE May 2020	WTE change since Apr 20	% change since Apr 20	WTE change since Dec 19	WTE change since May 19
<b>Overall</b>	<b>569</b>	<b>570</b>	<b>+1</b>	<b>+0.3%</b>	<b>+27</b>	<b>+23</b>
Medical/ Dental, other	1	1				
<b>Medical &amp; Dental</b>	<b>1</b>	<b>1</b>				
Nurse/ Midwife Manager	35	35				+1
Nurse/ Midwife Specialist & AN/MP	7	7			-1	-1
Staff Nurse/ Staff Midwife	143	144	+1	+0.7%	+0	-6
<i>Pre-registration Nurse/ Midwife Intern</i>				-100.0%	-7	-7
<i>Pre-registration Nurse Intern (COVID-19)</i>	23	23			+23	+23
Nursing/ Midwifery Student	23	23			+12	+17
Nursing/ Midwifery other	3	3				-0
<b>Nursing &amp; Midwifery</b>	<b>211</b>	<b>212</b>	<b>+1</b>	<b>+0.5%</b>	<b>+11</b>	<b>+11</b>
Therapy Professions	15	15				
Social Care	55	56	+1	+1.9%	+2	+1
Social Workers	5	5			+0	+0
Psychologists	6	7	+1	+16.7%	+4	+3
H&SC, Other	6	6				
<b>Health &amp; Social Care Professionals</b>	<b>87</b>	<b>89</b>	<b>+2</b>	<b>+2.4%</b>	<b>+6</b>	<b>+4</b>
Management (VIII & above)	2	2				
Administrative/ Supervisory (V to VII)	11	10	-1	-9.1%		
Clerical (III & IV)	14	14			-1	-1
<b>Management &amp; Administrative</b>	<b>27</b>	<b>26</b>	<b>-1</b>	<b>-3.7%</b>	<b>-1</b>	<b>-1</b>
Support	45	45			+4	+2
Maintenance/ Technical	4	4				
<b>General Support</b>	<b>49</b>	<b>49</b>			<b>+4</b>	<b>+2</b>
Health Care Assistants	171	171	-1	-0.4%	+6	+6
Care, other	22	22			+1	+1
<b>Patient &amp; Client Care</b>	<b>194</b>	<b>193</b>	<b>-1</b>	<b>-0.3%</b>	<b>+7</b>	<b>+6</b>

## Daughters of Charity, Roscrea

May 2020 (Dec 2019 figure: 290)	WTE Apr 2020	WTE May 2020	WTE change since Apr 20	% change since Apr 20	WTE change since Dec 19	WTE change since May 19
<b>Overall</b>	<b>291</b>	<b>293</b>	<b>+2</b>	<b>+0.7%</b>	<b>+3</b>	<b>-0</b>
Nurse/ Midwife Manager	15	16	+1	+6.9%		-0
Staff Nurse/ Staff Midwife	18	18				-0
Nursing/ Midwifery other	1	1				
<b>Nursing &amp; Midwifery</b>	<b>34</b>	<b>35</b>	<b>+1</b>	<b>+3.0%</b>		<b>-1</b>
Therapy Professions	2	2			+0	+1
Social Care	20	24	+4	+20.4%	+5	+2
Social Workers	1	1				
Psychologists	1	1				
<b>Health &amp; Social Care Professionals</b>	<b>24</b>	<b>28</b>	<b>+4</b>	<b>+17.0%</b>	<b>+5</b>	<b>+2</b>
Management (VIII & above)	1	1				
Administrative/ Supervisory (V to VII)	7	7				+1
Clerical (III & IV)	7	7			+0	-1
<b>Management &amp; Administrative</b>	<b>15</b>	<b>15</b>			<b>+0</b>	<b>-0</b>
Support	4	4				-1
Maintenance/ Technical	6	5	-1	-17.4%	-1	-1
<b>General Support</b>	<b>10</b>	<b>9</b>	<b>-1</b>	<b>-9.9%</b>	<b>-1</b>	<b>-2</b>
Health Care Assistants	204	205	+1	+0.4%	+3	+3
Care, other	5	2	-3	-62.9%	-4	-3
<b>Patient &amp; Client Care</b>	<b>209</b>	<b>207</b>	<b>-2</b>	<b>-1.0%</b>	<b>-1</b>	<b>-0</b>



# Incorporated Orthopaedic Hospital

May 2020 (Dec 2019 figure: 226)	WTE Apr 2020	WTE May 2020	WTE change since Apr 20	% change since Apr 20	WTE change since Dec 19	WTE change since May 19
<b>Overall</b>	<b>264</b>	<b>258</b>	<b>-6</b>	<b>-2.2%</b>	<b>+32</b>	<b>+33</b>
Consultants	1	1			+1	+1
Registrars	2	2				
SHO/ Interns	4	4			-1	-1
<b>Medical &amp; Dental</b>	<b>7</b>	<b>7</b>			<b>-0</b>	<b>-0</b>
Nurse/ Midwife Manager	17	17			-1	-1
Staff Nurse/ Staff Midwife	71	71			+11	+11
<b>Nursing &amp; Midwifery</b>	<b>88</b>	<b>88</b>			<b>+10</b>	<b>+10</b>
Therapy Professions	30	30			+10	+10
Health Science/ Diagnostics	1	1				
Social Workers	8	8			+1	+1
Pharmacy	3	3	+0	+8.3%	+0	+0
<b>Health &amp; Social Care Professionals</b>	<b>42</b>	<b>42</b>	<b>+0</b>	<b>+0.5%</b>	<b>+11</b>	<b>+10</b>
Management (VIII & above)	1	1				
Administrative/ Supervisory (V to VII)	6	6				+1
Clerical (III & IV)	11	11			+1	+1
<b>Management &amp; Administrative</b>	<b>18</b>	<b>18</b>			<b>+1</b>	<b>+2</b>
Support	40	40			+6	+6
Maintenance/ Technical	2	2				
<b>General Support</b>	<b>42</b>	<b>42</b>			<b>+6</b>	<b>+6</b>
Health Care Assistants	67	61	-6	-9.0%	+5	+5
Care, other	0	0				
<b>Patient &amp; Client Care</b>	<b>67</b>	<b>61</b>	<b>-6</b>	<b>-9.0%</b>	<b>+5</b>	<b>+5</b>

## Kare, Newbridge, Co Kildare

May 2020 (Dec 2019 figure: 360)	WTE Apr 2020	WTE May 2020	WTE change since Apr 20	% change since Apr 20	WTE change since Dec 19	WTE change since May 19
<b>Overall</b>	<b>362</b>	<b>352</b>	<b>-11</b>	<b>-2.9%</b>	<b>-8</b>	<b>+15</b>
Nurse/ Midwife Manager	10	10			-2	-2
Staff Nurse/ Staff Midwife	23	22	-1	-2.8%	-0	+1
<b>Nursing &amp; Midwifery</b>	<b>33</b>	<b>33</b>	<b>-1</b>	<b>-1.9%</b>	<b>-2</b>	<b>-1</b>
Therapy Professions	14	13	-1	-6.1%	-2	+0
Social Care	62	60	-2	-3.8%	-1	+1
Social Workers	4	4				+0
Psychologists	6	5	-1	-10.0%	+1	+2
<b>Health &amp; Social Care Professionals</b>	<b>85</b>	<b>82</b>	<b>-4</b>	<b>-4.4%</b>	<b>-2</b>	<b>+3</b>
Management (VIII & above)	6	6				
Administrative/ Supervisory (V to VII)	13	13	-0	-0.4%	+1	+1
Clerical (III & IV)	14	14			+2	+4
<b>Management &amp; Administrative</b>	<b>33</b>	<b>33</b>	<b>-0</b>	<b>-0.2%</b>	<b>+3</b>	<b>+5</b>
Support	2	2			-0	+0
<b>General Support</b>	<b>2</b>	<b>2</b>			<b>-0</b>	<b>+0</b>
Health Care Assistants	100	94	-6	-5.7%	-6	-3
Care, other	110	109	-0	-0.4%	-0	+11
<b>Patient &amp; Client Care</b>	<b>210</b>	<b>203</b>	<b>-6</b>	<b>-3.0%</b>	<b>-7</b>	<b>+8</b>

## Leopardstown Park Hospital

May 2020 (Dec 2019 figure: 211)	WTE Apr 2020	WTE May 2020	WTE change since Apr 20	% change since Apr 20	WTE change since Dec 19	WTE change since May 19
<b>Overall</b>	<b>205</b>	<b>205</b>	<b>+0</b>	<b>+0.1%</b>	<b>-6</b>	<b>-6</b>
Medical/ Dental, other	1	1				
<b>Medical &amp; Dental</b>	<b>1</b>	<b>1</b>				
Nurse/ Midwife Manager	15	15	-1	-3.2%	-0	-1
Staff Nurse/ Staff Midwife	41	41	+1	+2.0%	-1	-1
<b>Nursing &amp; Midwifery</b>	<b>56</b>	<b>56</b>	<b>+0</b>	<b>+0.5%</b>	<b>-2</b>	<b>-2</b>
Therapy Professions	6	7	+1	+16.1%		+0
Social Workers	1	1			-0	-0
Pharmacy	2	2	-0	-3.2%	-0	-0
<b>Health &amp; Social Care Professionals</b>	<b>9</b>	<b>10</b>	<b>+1</b>	<b>+10.8%</b>	<b>-0</b>	<b>-0</b>
Management (VIII & above)	1	1				
Administrative/ Supervisory (V to VII)	7	7				
Clerical (III & IV)	10	10				
<b>Management &amp; Administrative</b>	<b>19</b>	<b>19</b>				
Support	34	34	-1	-2.2%	+0	+0
Maintenance/ Technical	4	4				+1
<b>General Support</b>	<b>38</b>	<b>38</b>	<b>-1</b>	<b>-1.9%</b>	<b>+0</b>	<b>+1</b>
Health Care Assistants	79	79	-0	-0.3%	-3	-3
Care, other	3	3	-0	-0.4%	-2	-2
<b>Patient &amp; Client Care</b>	<b>82</b>	<b>82</b>	<b>-0</b>	<b>-0.3%</b>	<b>-4</b>	<b>-5</b>

### Muiriosa Foundation, Laois/Offaly

May 2020 (Dec 2019 figure: 302)	WTE Apr 2020	WTE May 2020	WTE change since Apr 20	% change since Apr 20	WTE change since Dec 19	WTE change since May 19
<b>Overall</b>	<b>300</b>	<b>299</b>	<b>-1</b>	<b>-0.2%</b>	<b>-2</b>	<b>+2</b>
Nurse/ Midwife Manager	16	16	-0	-1.1%	+0	+1
Staff Nurse/ Staff Midwife	29	29	+0	+0.8%	+3	+1
<b>Nursing &amp; Midwifery</b>	<b>45</b>	<b>45</b>	<b>+0</b>	<b>+0.1%</b>	<b>+3</b>	<b>+2</b>
Social Care	97	99	+2	+2.1%	+4	+0
Social Workers	4	4			-0	
Psychologists	1	1				-0
H&SC, Other	1	1				-0
<b>Health &amp; Social Care Professionals</b>	<b>102</b>	<b>104</b>	<b>+2</b>	<b>+2.0%</b>	<b>+4</b>	<b>-0</b>
Management (VIII & above)	1	1				
Administrative/ Supervisory (V to VII)	5	5			-0	-0
Clerical (III & IV)	11	11	-0	-0.1%	-0	-1
<b>Management &amp; Administrative</b>	<b>17</b>	<b>17</b>	<b>-0</b>	<b>-0.1%</b>	<b>-0</b>	<b>-1</b>
Support	1	1	+0	+4.2%	+0	+0
Maintenance/ Technical	2	2				
<b>General Support</b>	<b>3</b>	<b>3</b>	<b>+0</b>	<b>+1.5%</b>	<b>+0</b>	<b>+0</b>
Health Care Assistants	103	102	-1	-1.4%	-8	+3
Care, other	30	28	-1	-4.4%	-2	-2
<b>Patient &amp; Client Care</b>	<b>133</b>	<b>130</b>	<b>-3</b>	<b>-2.1%</b>	<b>-9</b>	<b>+2</b>

### Muiriosa Foundation, Longford/Westmeath

May 2020 (Dec 2019 figure: 270)	WTE Apr 2020	WTE May 2020	WTE change since Apr 20	% change since Apr 20	WTE change since Dec 19	WTE change since May 19
<b>Overall</b>	<b>272</b>	<b>274</b>	<b>+2</b>	<b>+0.7%</b>	<b>+4</b>	<b>+3</b>
Nurse/ Midwife Manager	10	10	+0	+2.0%	+0	+0
Staff Nurse/ Staff Midwife	5	5			-1	-1
<b>Nursing &amp; Midwifery</b>	<b>14</b>	<b>14</b>	<b>+0</b>	<b>+1.3%</b>	<b>-0</b>	<b>-0</b>
Therapy Professions	3	3				
Social Care	100	99	-1	-1.2%	+5	-2
Social Workers	4	4	+0	+6.6%	+0	+1
Psychologists	2	2	-0	-2.0%		+0
H&SC, Other	3	3			-0	-0
<b>Health &amp; Social Care Professionals</b>	<b>111</b>	<b>110</b>	<b>-1</b>	<b>-0.9%</b>	<b>+5</b>	<b>-1</b>
Administrative/ Supervisory (V to VII)	5	5			+1	+3
Clerical (III & IV)	11	10	-0	-2.3%		-0
<b>Management &amp; Administrative</b>	<b>15</b>	<b>15</b>	<b>-0</b>	<b>-1.6%</b>	<b>+1</b>	<b>+3</b>
Support	1	1				
Maintenance/ Technical	3	3				
<b>General Support</b>	<b>4</b>	<b>4</b>				
Health Care Assistants	111	113	+3	+2.5%	-2	+3
Care, other	17	18	+0	+1.4%	+0	-1
<b>Patient &amp; Client Care</b>	<b>128</b>	<b>131</b>	<b>+3</b>	<b>+2.3%</b>	<b>-1</b>	<b>+2</b>

May 2020 (Dec 2019 figure: 334)	WTE Apr 2020	WTE May 2020	WTE change since Apr 20	% change since Apr 20	WTE change since Dec 19	WTE change since May 19
<b>Overall</b>	<b>348</b>	<b>352</b>	<b>+4</b>	<b>+1.1%</b>	<b>+19</b>	<b>+19</b>
Nurse/ Midwife Manager	17	17	-0	-1.3%	-1	-2
Nurse/ Midwife Specialist & AN/MP	1	1	+0	+6.5%	+0	+0
Staff Nurse/ Staff Midwife	24	25	+2	+6.6%	+1	-1
Pre-registration Nurse/ Midwife Intern	5		-5	-100.0%		-2
Pre-registration Nurse Intern (COVID-19)	4	10	+6	+145.9%	+10	+10
Nursing/ Midwifery Student	9	10	+0	+3.9%	+10	+8
Nursing/ Midwifery other	7	7	+0	+0.3%	+2	+2
<b>Nursing &amp; Midwifery</b>	<b>58</b>	<b>60</b>	<b>+2</b>	<b>+3.1%</b>	<b>+12</b>	<b>+8</b>
Therapy Professions	8	8				+0
Social Care	90	89	-1	-1.2%	+0	+4
Social Workers	2	2				-2
Psychologists	2	2	-0	-14.2%	-0	-0
H&SC, Other	3	3				+1
<b>Health &amp; Social Care Professionals</b>	<b>106</b>	<b>104</b>	<b>-1</b>	<b>-1.2%</b>	<b>+0</b>	<b>+3</b>
Management (VIII & above)	3	3				
Administrative/ Supervisory (V to VII)	14	14			+0	
Clerical (III & IV)	15	14	-0	-1.0%	+1	+0
<b>Management &amp; Administrative</b>	<b>31</b>	<b>31</b>	<b>-0</b>	<b>-0.4%</b>	<b>+1</b>	<b>+0</b>
Support	15	15	+0	+1.1%	-1	-2
Maintenance/ Technical	5	5				
<b>General Support</b>	<b>20</b>	<b>20</b>	<b>+0</b>	<b>+0.8%</b>	<b>-1</b>	<b>-2</b>
Health Care Assistants	125	129	+4	+2.8%	+6	+11
Care, other	8	8	-0	-2.3%	+0	-1
<b>Patient &amp; Client Care</b>	<b>134</b>	<b>137</b>	<b>+3</b>	<b>+2.5%</b>	<b>+6</b>	<b>+10</b>

## Peamount Hospital (Newcastle)

May 2020 (Dec 2019 figure: 486)	WTE Apr 2020	WTE May 2020	WTE change since Apr 20	% change since Apr 20	WTE change since Dec 19	WTE change since May 19
<b>Overall</b>	<b>485</b>	<b>486</b>	<b>+1</b>	<b>+0.3%</b>	<b>-0</b>	<b>+8</b>
Registrars	2	2	-1	-36.1%	-0	-1
SHO/ Interns	7	5	-2	-27.2%	-2	-1
<b>Medical &amp; Dental</b>	<b>9</b>	<b>7</b>	<b>-3</b>	<b>-29.5%</b>	<b>-2</b>	<b>-1</b>
Nurse/ Midwife Manager	25	26	+0	+1.1%	-1	+2
Nurse/ Midwife Specialist & AN/MP	2	2	+0	+7.5%		
Staff Nurse/ Staff Midwife	82	85	+2	+2.6%	+3	+3
<b>Nursing &amp; Midwifery</b>	<b>110</b>	<b>112</b>	<b>+3</b>	<b>+2.3%</b>	<b>+2</b>	<b>+5</b>
Therapy Professions	32	36	+4	+11.9%	+7	+9
Health Science/ Diagnostics	3	3				
Social Care	4	4	+0	+7.2%	+2	+1
Social Workers	5	6	+1	+20.0%	+1	+1
Pharmacy	4	4	+0	+6.6%	+0	+1
<b>Health &amp; Social Care Professionals</b>	<b>48</b>	<b>53</b>	<b>+5</b>	<b>+11.2%</b>	<b>+10</b>	<b>+12</b>
Management (VIII & above)	4	4				+1
Administrative/ Supervisory (V to VII)	17	17	+0	+2.8%	+3	+2
Clerical (III & IV)	19	19	-0	-0.5%	-1	-2
<b>Management &amp; Administrative</b>	<b>40</b>	<b>40</b>	<b>+0</b>	<b>+0.9%</b>	<b>+2</b>	<b>+0</b>
Support	47	51	+4	+9.3%	+4	+3
Maintenance/ Technical	8	8	-0	-3.1%	+0	-1
<b>General Support</b>	<b>55</b>	<b>59</b>	<b>+4</b>	<b>+7.5%</b>	<b>+4</b>	<b>+1</b>
Health Care Assistants	221	212	-9	-4.1%	-16	-9
Care, other	3	3	+1	+26.4%	-0	+0
<b>Patient &amp; Client Care</b>	<b>223</b>	<b>215</b>	<b>-8</b>	<b>-3.7%</b>	<b>-16</b>	<b>-9</b>

May 2020 (Dec 2019 figure: 272)	WTE Apr 2020	WTE May 2020	WTE change since Apr 20	% change since Apr 20	WTE change since Dec 19	WTE change since May 19
<b>Overall</b>	<b>276</b>	<b>277</b>	<b>+1</b>	<b>+0.4%</b>	<b>+5</b>	<b>-5</b>
Registrars	1	1				-1
Medical/ Dental, other	1	1				
<b>Medical &amp; Dental</b>	<b>2</b>	<b>2</b>				<b>-1</b>
Nurse/ Midwife Manager	20	20				
Staff Nurse/ Staff Midwife	76	76			+2	+0
<b>Nursing &amp; Midwifery</b>	<b>96</b>	<b>96</b>			<b>+2</b>	<b>+0</b>
Therapy Professions	30	29	-1	-3.4%	-2	-4
Social Workers	6	6				-0
Psychologists	1	1				
<b>Health &amp; Social Care Professionals</b>	<b>36</b>	<b>35</b>	<b>-1</b>	<b>-2.8%</b>	<b>-2</b>	<b>-4</b>
Management (VIII & above)				-100.0%		-1
Administrative/ Supervisory (V to VII)	6	6				+0
Clerical (III & IV)	8	8			+1	-0
<b>Management &amp; Administrative</b>	<b>14</b>	<b>14</b>			<b>+1</b>	<b>-1</b>
Support	35	35			-1	+1
Maintenance/ Technical	5	5			+1	+1
<b>General Support</b>	<b>40</b>	<b>40</b>				<b>+2</b>
Health Care Assistants	87	89	+2	+2.3%	+3	-2
Care, other	1	1			+1	+1
<b>Patient &amp; Client Care</b>	<b>88</b>	<b>90</b>	<b>+2</b>	<b>+2.3%</b>	<b>+4</b>	<b>-2</b>

## Stewart's Hospital, (Palmerstown)

May 2020 (Dec 2019 figure: 852)	WTE Apr 2020	WTE May 2020	WTE change since Apr 20	% change since Apr 20	WTE change since Dec 19	WTE change since May 19
<b>Overall</b>	<b>863</b>	<b>871</b>	<b>+7</b>	<b>+0.9%</b>	<b>+19</b>	<b>-12</b>
Consultants	0	0				
Registrars				-100.0%		-1
<b>Medical &amp; Dental</b>	<b>0</b>	<b>0</b>				<b>-1</b>
Nurse/ Midwife Manager	33	33			-3	-5
Staff Nurse/ Staff Midwife	72	74	+2	+2.4%	+1	+0
Pre-registration Nurse/ Midwife Intern	1		-1	-100.0%		-8
Pre-registration Nurse Intern (COVID-19)	7	15	+8	+114.3%	+15	+15
Nursing/ Midwifery Student	8	15	+8	+100.0%	+15	+8
Nursing/ Midwifery other	1	1				
<b>Nursing &amp; Midwifery</b>	<b>113</b>	<b>122</b>	<b>+9</b>	<b>+8.2%</b>	<b>+13</b>	<b>+3</b>
Therapy Professions	15	16	+1	+3.3%	-0	-0
Social Care	14	14			+4	+3
Social Workers	7	7			+1	
Psychologists	4	4				
<b>Health &amp; Social Care Professionals</b>	<b>40</b>	<b>40</b>	<b>+1</b>	<b>+1.3%</b>	<b>+5</b>	<b>+3</b>
Management (VIII & above)	11	11				-2
Administrative/ Supervisory (V to VII)	16	16			+2	-2
Clerical (III & IV)	23	25	+2	+10.3%	+1	-1
<b>Management &amp; Administrative</b>	<b>49</b>	<b>52</b>	<b>+2</b>	<b>+4.7%</b>	<b>+3</b>	<b>-5</b>
Support	58	58	-0	-0.1%	+1	-1
Maintenance/ Technical	5	5				-1
<b>General Support</b>	<b>63</b>	<b>63</b>	<b>-0</b>	<b>-0.1%</b>	<b>+1</b>	<b>-2</b>
Health Care Assistants	483	480	-3	-0.5%	-1	-1
Care, other	116	114	-2	-1.7%	-2	-8
<b>Patient &amp; Client Care</b>	<b>598</b>	<b>594</b>	<b>-5</b>	<b>-0.8%</b>	<b>-3</b>	<b>-9</b>

May 2020 (Dec 2019 figure: 647)	WTE Apr 2020	WTE May 2020	WTE change since Apr 20	% change since Apr 20	WTE change since Dec 19	WTE change since May 19
<b>Overall</b>	<b>641</b>	<b>645</b>	<b>+4</b>	<b>+0.6%</b>	<b>-1</b>	<b>+8</b>
Registrars	1	1				
<b>Medical &amp; Dental</b>	<b>1</b>	<b>1</b>				
Nurse/ Midwife Manager	44	45	+0	+0.1%	+1	+3
Nurse/ Midwife Specialist & AN/MP	4	4			+0	+1
Staff Nurse/ Staff Midwife	147	146	-0	-0.3%	-7	+3
<i>Pre-registration Nurse/ Midwife Intern</i>	6		-6	-100.0%	-1	-10
<i>Pre-registration Nurse Intern (COVID-19)</i>	4	21	+17	+419.4%	+21	+21
Nursing/ Midwifery Student	11	21	+11	+103.7%	+21	+11
<b>Nursing &amp; Midwifery</b>	<b>205</b>	<b>216</b>	<b>+11</b>	<b>+5.2%</b>	<b>+16</b>	<b>+18</b>
Therapy Professions	2	3	+1	+30.0%	-0	-0
Social Care	76	76	+0	+0.6%	-2	
Social Workers	2	2			-0	-0
Psychologists	1	1				
<b>Health &amp; Social Care Professionals</b>	<b>81</b>	<b>82</b>	<b>+1</b>	<b>+1.3%</b>	<b>-3</b>	<b>-0</b>
Management (VIII & above)	1	1			-0	-1
Administrative/ Supervisory (V to VII)	6	6			-0	+1
Clerical (III & IV)	12	12	+0	+1.1%	+1	+1
<b>Management &amp; Administrative</b>	<b>18</b>	<b>19</b>	<b>+0</b>	<b>+0.7%</b>	<b>+1</b>	<b>+1</b>
Support	22	22	+0	+0.7%	-1	-2
Maintenance/ Technical	3	3			-0	-0
<b>General Support</b>	<b>25</b>	<b>25</b>	<b>+0</b>	<b>+0.6%</b>	<b>-1</b>	<b>-2</b>
Health Care Assistants	275	269	-6	-2.2%	-12	-6
Care, other	36	34	-2	-5.3%	-2	-3
<b>Patient &amp; Client Care</b>	<b>311</b>	<b>303</b>	<b>-8</b>	<b>-2.5%</b>	<b>-14</b>	<b>-9</b>



## St. John of God (IDS)

May 2020 (Dec 2019 figure: 456)	WTE Apr 2020	WTE May 2020	WTE change since Apr 20	% change since Apr 20	WTE change since Dec 19	WTE change since May 19
<b>Overall</b>	<b>449</b>	<b>447</b>	<b>-1</b>	<b>-0.3%</b>	<b>-9</b>	<b>+4</b>
<b>Medical &amp; Dental</b>	<b>1</b>	<b>1</b>				
Nurse/ Midwife Manager	8	8			+0	+1
Staff Nurse/ Staff Midwife	45	46	+2	+3.6%	+0	+0
<b>Nursing &amp; Midwifery</b>	<b>53</b>	<b>54</b>	<b>+2</b>	<b>+3.1%</b>	<b>+0</b>	<b>+1</b>
Therapy Professions	11	11	-0	-0.2%	-2	-2
Social Care	152	150	-2	-1.5%	+4	+7
Social Workers	2	2	+0	+8.7%	-2	-2
Psychologists	6	7	+0	+5.7%	+2	+2
<b>Health &amp; Social Care Professionals</b>	<b>171</b>	<b>169</b>	<b>-2</b>	<b>-1.0%</b>	<b>+2</b>	<b>+5</b>
Management (VIII & above)	15	14	-0	-0.6%	-0	-2
Administrative/ Supervisory (V to VII)	28	27	-1	-3.7%	-1	-1
Clerical (III & IV)	18	18	-0	-0.6%	-1	+0
<b>Management &amp; Administrative</b>	<b>60</b>	<b>59</b>	<b>-1</b>	<b>-2.0%</b>	<b>-3</b>	<b>-3</b>
Support	12	12	-0	-0.9%	-1	+1
Maintenance/ Technical	5	5			+0	+1
<b>General Support</b>	<b>17</b>	<b>17</b>	<b>-0</b>	<b>-0.6%</b>	<b>-0</b>	<b>+2</b>
Health Care Assistants	15	16	+0	+2.3%	-3	-0
Care, other	132	131	-0	-0.3%	-5	-1
<b>Patient &amp; Client Care</b>	<b>147</b>	<b>147</b>	<b>-0</b>	<b>-0.0%</b>	<b>-8</b>	<b>-1</b>

## St. John of God, Kerry

May 2020 (Dec 2019 figure: 315)	WTE Apr 2020	WTE May 2020	WTE change since Apr 20	% change since Apr 20	WTE change since Dec 19	WTE change since May 19
<b>Overall</b>	<b>309</b>	<b>309</b>	<b>+1</b>	<b>+0.2%</b>	<b>-6</b>	<b>+6</b>
Nurse/ Midwife Manager	14	15	+0	+2.9%	-1	-1
Staff Nurse/ Staff Midwife	46	47	+1	+2.1%	-2	-6
<b>Nursing &amp; Midwifery</b>	<b>60</b>	<b>62</b>	<b>+1</b>	<b>+2.3%</b>	<b>-3</b>	<b>-6</b>
Therapy Professions	3	3	+0	+1.2%	-0	-0
Social Care	47	45	-2	-5.0%	-1	+1
Social Workers	1	1				
Psychologists	1	1			-1	-1
<b>Health &amp; Social Care Professionals</b>	<b>52</b>	<b>50</b>	<b>-2</b>	<b>-4.5%</b>	<b>-2</b>	<b>+0</b>
Management (VIII & above)	1	1				
Administrative/ Supervisory (V to VII)	8	7	-0	-2.5%	+0	+1
Clerical (III & IV)	10	10	-0	-1.5%	+0	+0
<b>Management &amp; Administrative</b>	<b>19</b>	<b>18</b>	<b>-0</b>	<b>-1.8%</b>	<b>+0</b>	<b>+1</b>
<b>General Support</b>	<b>29</b>	<b>29</b>	<b>+0</b>	<b>+0.6%</b>	<b>-0</b>	<b>-1</b>
Health Care Assistants	107	109	+1	+1.3%	+3	+10
Care, other	41	42	+0	+0.8%	-5	+2
<b>Patient &amp; Client Care</b>	<b>149</b>	<b>151</b>	<b>+2</b>	<b>+1.2%</b>	<b>-1</b>	<b>+11</b>

May 2020 (Dec 2019 figure: 787)	WTE Apr 2020	WTE May 2020	WTE change since Apr 20	% change since Apr 20	WTE change since Dec 19	WTE change since May 19
<b>Overall</b>	<b>754</b>	<b>746</b>	<b>-8</b>	<b>-1.0%</b>	<b>-41</b>	<b>+9</b>
Registrars	1	1				
<b>Medical &amp; Dental</b>	<b>1</b>	<b>1</b>				
Nurse/ Midwife Manager	24	23	-0	-1.7%	+3	-2
Nurse/ Midwife Specialist & AN/MP	1	1				
Staff Nurse/ Staff Midwife	85	87	+2	+1.9%	-3	+8
<b>Nursing &amp; Midwifery</b>	<b>109</b>	<b>111</b>	<b>+1</b>	<b>+1.1%</b>	<b>-0</b>	<b>+6</b>
Therapy Professions	16	16	+0	+0.9%	+1	
Social Care	244	243	-2	-0.6%	-10	+6
Social Workers	7	6	-1	-12.8%		-1
Psychologists	6	7	+1	+7.7%	+1	-0
<b>Health &amp; Social Care Professionals</b>	<b>274</b>	<b>272</b>	<b>-2</b>	<b>-0.7%</b>	<b>-8</b>	<b>+5</b>
Management (VIII & above)	6	6			-0	+1
Administrative/ Supervisory (V to VII)	11	10	-1	-9.3%	-1	-0
Clerical (III & IV)	18	18			+0	-1
<b>Management &amp; Administrative</b>	<b>35</b>	<b>34</b>	<b>-1</b>	<b>-2.9%</b>	<b>-1</b>	<b>-0</b>
Support	31	30	-1	-4.7%	-5	-6
Maintenance/ Technical	15	13	-2	-11.8%	+0	+1
<b>General Support</b>	<b>46</b>	<b>42</b>	<b>-3</b>	<b>-7.0%</b>	<b>-5</b>	<b>-6</b>
Health Care Assistants	152	147	-5	-3.3%	-25	-5
Care, other	136	139	+2	+1.6%	-3	+9
<b>Patient &amp; Client Care</b>	<b>289</b>	<b>286</b>	<b>-3</b>	<b>-1.0%</b>	<b>-28</b>	<b>+4</b>

## St. Michael's House, Dublin

May 2020 (Dec 2019 figure: 1,431)	WTE Apr 2020	WTE May 2020	WTE change since Apr 20	% change since Apr 20	WTE change since Dec 19	WTE change since May 19
<b>Overall</b>	<b>1,414</b>	<b>1,398</b>	<b>-16</b>	<b>-1.1%</b>	<b>-33</b>	<b>+21</b>
Consultants	6	6			-2	+0
Registrars	3	3			-1	+1
Medical/ Dental, other	4	4	+0	+6.8%	+1	+0
<b>Medical &amp; Dental</b>	<b>13</b>	<b>13</b>	<b>+0</b>	<b>+2.1%</b>	<b>-2</b>	<b>+2</b>
Nurse/ Midwife Manager	86	86	-0	-0.2%	+2	+5
Staff Nurse/ Staff Midwife	153	155	+2	+1.2%	-7	+2
<b>Nursing &amp; Midwifery</b>	<b>239</b>	<b>241</b>	<b>+2</b>	<b>+0.7%</b>	<b>-5</b>	<b>+7</b>
Therapy Professions	53	53	-0	-0.4%	+1	+6
Social Care	532	529	-4	-0.7%	+3	+27
Social Workers	21	21	-0	-0.5%	+1	+1
Psychologists	21	19	-3	-12.0%	+0	+2
H&SC, Other	10	10	+0	+2.8%	+0	-0
<b>Health &amp; Social Care Professionals</b>	<b>638</b>	<b>632</b>	<b>-6</b>	<b>-1.0%</b>	<b>+7</b>	<b>+36</b>
Management (VIII & above)	21	21			-1	+2
Administrative/ Supervisory (V to VII)	42	42			-1	+3
Clerical (III & IV)	53	52	-1	-1.4%	-2	+1
<b>Management &amp; Administrative</b>	<b>116</b>	<b>115</b>	<b>-1</b>	<b>-0.7%</b>	<b>-3</b>	<b>+6</b>
Support	95	91	-4	-4.7%	-5	-11
Maintenance/ Technical	12	12			-0	-1
<b>General Support</b>	<b>107</b>	<b>103</b>	<b>-4</b>	<b>-4.2%</b>	<b>-5</b>	<b>-12</b>
Health Care Assistants	276	270	-6	-2.2%	-23	-16
Care, other	24	23	-0	-1.6%	-1	-1
<b>Patient &amp; Client Care</b>	<b>300</b>	<b>294</b>	<b>-7</b>	<b>-2.2%</b>	<b>-24</b>	<b>-17</b>

## St. Patrick's, Kilkenny

May 2020 (Dec 2019 figure: 279)	WTE Apr 2020	WTE May 2020	WTE change since Apr 20	% change since Apr 20	WTE change since Dec 19	WTE change since May 19
<b>Overall</b>	<b>287</b>	<b>285</b>	<b>-1</b>	<b>-0.5%</b>	<b>+6</b>	<b>+5</b>
Nurse/ Midwife Manager	12	12	-1	-6.1%	+1	+1
Staff Nurse/ Staff Midwife	25	26	+0	+1.3%	+0	+1
<b>Nursing &amp; Midwifery</b>	<b>38</b>	<b>37</b>	<b>-0</b>	<b>-1.1%</b>	<b>+2</b>	<b>+1</b>
Social Care	28	26	-2	-6.7%	-8	-9
Social Workers	1	1			-1	-1
H&SC, Other	3	3	-0	-0.7%	-0	+0
<b>Health &amp; Social Care Professionals</b>	<b>32</b>	<b>30</b>	<b>-2</b>	<b>-6.0%</b>	<b>-10</b>	<b>-10</b>
Executive Management	1	1			+1	+1
Management (VIII & above)	1	1			+1	+1
Administrative/ Supervisory (V to VII)	6	5	-1	-16.7%	-2	-3
Clerical (III & IV)	12	13	+0	+2.4%	-1	-1
<b>Management &amp; Administrative</b>	<b>19</b>	<b>19</b>	<b>-1</b>	<b>-3.6%</b>	<b>-2</b>	<b>-3</b>
Support	3	3			-4	-10
Maintenance/ Technical	3	3				-1
<b>General Support</b>	<b>6</b>	<b>6</b>			<b>-4</b>	<b>-11</b>
<b>Patient &amp; Client Care</b>	<b>191</b>	<b>193</b>	<b>+2</b>	<b>+0.8%</b>	<b>+20</b>	<b>+28</b>

## Sunbeam House Services

May 2020 (Dec 2019 figure: 449)	WTE Apr 2020	WTE May 2020	WTE change since Apr 20	% change since Apr 20	WTE change since Dec 19	WTE change since May 19
<b>Overall</b>	<b>422</b>	<b>413</b>	<b>-9</b>	<b>-2.1%</b>	<b>-36</b>	<b>-29</b>
Nurse/ Midwife Manager	3	3			-1	-2
Staff Nurse/ Staff Midwife	32	30	-2	-5.5%	-7	-10
<b>Nursing &amp; Midwifery</b>	<b>35</b>	<b>33</b>	<b>-2</b>	<b>-5.0%</b>	<b>-8</b>	<b>-12</b>
Therapy Professions	2	2	-0	-16.5%	+0	+0
Social Care	158	152	-6	-3.9%	-30	-28
Social Workers	1	2	+1	+66.0%	-0	-0
Psychologists	2	2			+1	+1
H&SC, Other	1		-1	-100.0%	-1	
<b>Health &amp; Social Care Professionals</b>	<b>164</b>	<b>157</b>	<b>-7</b>	<b>-4.1%</b>	<b>-29</b>	<b>-27</b>
Management (VIII & above)	8	9	+1	+12.5%		+2
Administrative/ Supervisory (V to VII)	9	10	+0	+2.7%	+1	+1
Clerical (III & IV)	31	31	-0	-0.8%	+7	+5
<b>Management &amp; Administrative</b>	<b>49</b>	<b>49</b>	<b>+1</b>	<b>+2.0%</b>	<b>+8</b>	<b>+8</b>
Support	22	20	-2	-7.9%	+15	+9
Maintenance/ Technical	3	3	-0	-3.0%	+1	+3
<b>General Support</b>	<b>25</b>	<b>23</b>	<b>-2</b>	<b>-7.3%</b>	<b>+16</b>	<b>+12</b>
Health Care Assistants	56	56	+0	+0.8%	-15	-10
Care, other	93	94	+0	+0.0%	-9	-1
<b>Patient &amp; Client Care</b>	<b>149</b>	<b>150</b>	<b>+0</b>	<b>+0.3%</b>	<b>-24</b>	<b>-10</b>

Bros. of Charity, West Region

May 2020 (Dec 2019 figure: 1,288)	WTE Apr 2020	WTE May 2020	WTE change since Apr 20	% change since Apr 20	WTE change since Dec 19	WTE change since May 19
<b>Overall</b>	<b>1,234</b>	<b>1,254</b>	<b>+21</b>	<b>+1.7%</b>	<b>-34</b>	<b>+18</b>
Consultants	3	3			+0	+1
Registrars	2	2				
<b>Medical &amp; Dental</b>	<b>5</b>	<b>5</b>			<b>+0</b>	<b>+1</b>
Nurse/ Midwife Manager	67	66	-0	-0.7%	-1	-0
Nurse/ Midwife Specialist & AN/MP	4	5	+0	+7.3%	-0	-0
Staff Nurse/ Staff Midwife	121	120	-0	-0.2%	+1	-1
<b>Nursing &amp; Midwifery</b>	<b>192</b>	<b>192</b>	<b>-0</b>	<b>-0.2%</b>	<b>-0</b>	<b>-2</b>
Therapy Professions	31	29	-2	-5.3%	-5	-3
Social Care	204	203	-0	-0.2%	+8	+16
Social Workers	26	26	+0	+0.3%	+1	+1
Psychologists	14	14			-0	-2
H&SC, Other	14	14			-2	-3
<b>Health &amp; Social Care Professionals</b>	<b>289</b>	<b>287</b>	<b>-2</b>	<b>-0.7%</b>	<b>+1</b>	<b>+9</b>
Management (VIII & above)	13	14	+1	+7.8%	+1	+2
Administrative/ Supervisory (V to VII)	35	34	-1	-2.8%	-1	+0
Clerical (III & IV)	35	36	+1	+3.1%	-1	-3
<b>Management &amp; Administrative</b>	<b>83</b>	<b>84</b>	<b>+1</b>	<b>+1.4%</b>	<b>-1</b>	<b>-1</b>
Support	39	40	+1	+2.1%	-5	-6
Maintenance/ Technical	5	5			+0	+0
<b>General Support</b>	<b>44</b>	<b>45</b>	<b>+1</b>	<b>+1.8%</b>	<b>-5</b>	<b>-6</b>
Health Care Assistants	506	526	+20	+4.0%	-20	+13
Care, other	116	117	+1	+1.1%	-10	+4
<b>Patient &amp; Client Care</b>	<b>621</b>	<b>643</b>	<b>+21</b>	<b>+3.4%</b>	<b>-30</b>	<b>+17</b>

## Social Care Services Employment by Grade Group: May 2020

May 2020 (Dec 2019 figure: 31,535)	WTE Apr 2020	WTE May 2020	WTE change since Apr 20	% change since Apr 20	WTE change since Dec 19	WTE change since May 19
<b>Overall</b>	<b>31,476</b>	<b>31,578</b>	<b>+102</b>	<b>+0.3%</b>	<b>+43</b>	<b>+92</b>
Consultant Medicine	4	4			+1	+1
Consultant Paediatrics	3	3				
Consultant Psychiatry	20	20	-0	-1.2%	-1	+0
Consultant Surgery				-100.0%		-0
<b>Consultants</b>	<b>27</b>	<b>27</b>	<b>-0</b>	<b>-0.9%</b>	<b>-0</b>	<b>+1</b>
Registrar	12	11	-1	-7.3%	-2	-4
Senior Registrar	3	3				
Specialist Registrar	6	6				+2
<b>Registrars</b>	<b>21</b>	<b>20</b>	<b>-1</b>	<b>-4.2%</b>	<b>-2</b>	<b>-2</b>
<b>SHO/ Interns</b>	<b>21</b>	<b>19</b>	<b>-2</b>	<b>-7.5%</b>	<b>-3</b>	<b>-1</b>
<b>Medical/ Dental, other</b>	<b>100</b>	<b>99</b>	<b>-0</b>	<b>-0.2%</b>	<b>-11</b>	<b>+2</b>
<b>Medical &amp; Dental</b>	<b>169</b>	<b>166</b>	<b>-3</b>	<b>-1.7%</b>	<b>-17</b>	<b>-1</b>
Clinical Nurse/ Midwife Manager	1,340	1,344	+4	+0.3%	+25	+5
Director Nursing/Midwifery, Assistant	138	133	-5	-3.7%	-10	-3
Director of Nursing/Midwifery	139	142	+3	+2.2%	+1	+18
<b>Nurse/ Midwife Manager</b>	<b>1,617</b>	<b>1,619</b>	<b>+2</b>	<b>+0.1%</b>	<b>+16</b>	<b>+20</b>
Advanced Nurse/ Midwife Practitioner	14	14			+1	+4
Clinical Nurse/ Midwife Specialist	79	81	+2	+2.4%	+5	+5
<b>Nurse/ Midwife Specialist &amp; AN/MP</b>	<b>93</b>	<b>95</b>	<b>+2</b>	<b>+2.1%</b>	<b>+6</b>	<b>+8</b>
Staff Nurse [Intellectual Disability]	1,584	1,585	+0	+0.0%	-13	-54
Staff Nurse [Psychiatric]	62	60	-1	-2.2%	-28	-16
Staff Nurses [General/ Children's]	3,510	3,509	-0	-0.0%	+46	+32
<b>Staff Nurse/ Staff Midwife</b>	<b>5,156</b>	<b>5,154</b>	<b>-2</b>	<b>-0.0%</b>	<b>+6</b>	<b>-39</b>
<b>Public Health Nurse</b>	<b>19</b>	<b>20</b>	<b>+1</b>	<b>+3.0%</b>	<b>-0</b>	<b>-1</b>
Pre-registration Nurse/ Midwife Intern	52	7	-45	-86.6%	-21	-64
Pre-registration Nurse Intern (COVID-19)	63	159	+96	+153.5%	+159	+159
Post-registration Nurse/ Midwife Student	1	5	+4	+400.0%	+4	+5
Nursing/ Midwifery awaiting registration	24	14	-10	-41.0%	-1	+14
<b>Nursing/ Midwifery Student</b>	<b>140</b>	<b>185</b>	<b>+45</b>	<b>+32.2%</b>	<b>+141</b>	<b>+114</b>
Nursing Education/Clinical	27	27	+0	+0.8%	+5	+5
Other Nursing/ Midwifery	1	1				
<b>Nursing/ Midwifery other</b>	<b>28</b>	<b>28</b>	<b>+0</b>	<b>+0.8%</b>	<b>+5</b>	<b>+5</b>
<b>Nursing &amp; Midwifery</b>	<b>7,053</b>	<b>7,101</b>	<b>+48</b>	<b>+0.7%</b>	<b>+174</b>	<b>+107</b>
Dietitians	37	38	+1	+2.6%	+3	+5
Occupational Therapists	381	390	+9	+2.3%	+12	+31
Physiotherapists	321	323	+1	+0.4%	+10	+6
Podiatrists & Chiropodists	14	12	-1	-10.5%	+0	-1
Speech & Language Therapists	314	317	+3	+0.8%	+1	+10
<b>Therapy Professions</b>	<b>1,068</b>	<b>1,080</b>	<b>+12</b>	<b>+1.1%</b>	<b>+27</b>	<b>+51</b>
Clinical Engineering	12	12	+0	+2.8%	-1	-1
Clinical Measurement	1	1	-0	-0.7%	+0	+0
Medical Laboratory	4	4				
Phlebotomists	1	1				
Radiographers	6	6			-1	-0
<b>Health Science/ Diagnostics</b>	<b>24</b>	<b>24</b>	<b>+0</b>	<b>+1.3%</b>	<b>-2</b>	<b>-1</b>
<b>Social Care</b>	<b>2,599</b>	<b>2,587</b>	<b>-12</b>	<b>-0.5%</b>	<b>-11</b>	<b>+41</b>
<b>Social Workers</b>	<b>324</b>	<b>324</b>	<b>-0</b>	<b>-0.1%</b>	<b>+7</b>	<b>-8</b>
<b>Psychologists</b>	<b>217</b>	<b>215</b>	<b>-1</b>	<b>-0.6%</b>	<b>+9</b>	<b>+11</b>

May 2020 (Dec 2019 figure: 31,535)	WTE Apr 2020	WTE May 2020	WTE change since Apr 20	% change since Apr 20	WTE change since Dec 19	WTE change since May 19
<b>Overall</b>	<b>31,476</b>	<b>31,578</b>	<b>+102</b>	<b>+0.3%</b>	<b>+43</b>	<b>+92</b>
<b>Pharmacy</b>	<b>24</b>	<b>25</b>	<b>+0</b>	<b>+2.0%</b>	<b>+3</b>	<b>+4</b>
Counsellor Therapists	20	19	-1	-4.2%	-0	+3
Other Health & Social Care	49	50	+1	+2.4%	-1	-4
Play Therapists/ Specialists	13	13	-0	-0.9%	-4	-4
<b>H&amp;SC, Other</b>	<b>81</b>	<b>81</b>	<b>+0</b>	<b>+0.3%</b>	<b>-5</b>	<b>-6</b>
<b>Health &amp; Social Care Professionals</b>	<b>4,336</b>	<b>4,336</b>	<b>-0</b>	<b>-0.0%</b>	<b>+27</b>	<b>+93</b>
Executive Management	43	46	+3	+7.7%	+3	+4
Senior Management (VIII & GM)	217	217	+0	+0.1%	+5	+21
<b>Management (VIII &amp; above)</b>	<b>259</b>	<b>263</b>	<b>+3</b>	<b>+1.3%</b>	<b>+8</b>	<b>+25</b>
Middle Management (V-VII)	651	652	+0	+0.1%	+24	+42
Other Administrative	18	17	-1	-5.6%	+1	-1
<b>Administrative/ Supervisory (V to VII)</b>	<b>669</b>	<b>669</b>	<b>-1</b>	<b>-0.1%</b>	<b>+25</b>	<b>+41</b>
<b>Clerical (III &amp; IV)</b>	<b>1,250</b>	<b>1,252</b>	<b>+2</b>	<b>+0.2%</b>	<b>+21</b>	<b>+26</b>
<b>Management &amp; Administrative</b>	<b>2,178</b>	<b>2,183</b>	<b>+5</b>	<b>+0.2%</b>	<b>+54</b>	<b>+92</b>
Catering	327	326	-1	-0.2%	+7	+11
Household Services	912	916	+4	+0.4%	+4	-40
Other Labs & Associated	1	1				-0
Other Support	215	214	-2	-0.7%	-8	-11
Portering	107	107	-0	-0.3%	-2	+2
<b>Support</b>	<b>1,562</b>	<b>1,563</b>	<b>+1</b>	<b>+0.1%</b>	<b>+0</b>	<b>-38</b>
Maintenance	219	216	-3	-1.2%	+2	-5
Technical Services	8	8				
<b>Maintenance/ Technical</b>	<b>227</b>	<b>224</b>	<b>-3</b>	<b>-1.2%</b>	<b>+2</b>	<b>-5</b>
<b>General Support</b>	<b>1,789</b>	<b>1,788</b>	<b>-2</b>	<b>-0.1%</b>	<b>+2</b>	<b>-43</b>
HCA, Nurse's Aide, etc.	10,751	10,984	+233	+2.2%	+146	+165
Health & Social Care Assistants	34	33	-0	-0.7%	+3	+2
<b>Health Care Assistants</b>	<b>10,785</b>	<b>11,017</b>	<b>+232</b>	<b>+2.2%</b>	<b>+148</b>	<b>+167</b>
<b>Home Help</b>	<b>3,425</b>	<b>3,255</b>	<b>-170</b>	<b>-5.0%</b>	<b>-296</b>	<b>-332</b>
<b>Care, other</b>	<b>1,741</b>	<b>1,732</b>	<b>-9</b>	<b>-0.5%</b>	<b>-49</b>	<b>+8</b>
<b>Patient &amp; Client Care</b>	<b>15,951</b>	<b>16,005</b>	<b>+53</b>	<b>+0.3%</b>	<b>-197</b>	<b>-157</b>

## Employment by WTE, Headcount, Gender, Full-Time /Part-Time etc.: May 2020

Social Care Services Staff Group	WTE	Headcount	WTE: no.	% Male	% female	Male WTE: no.	Female WTE: no.	% Total Perm	% Male Perm	% Female Perm	% Total Full Time	% Total Part Time	% Male FT	% Female FT
<b>Overall</b>	<b>31,578</b>	<b>38,749</b>	<b>1.23</b>	<b>16.1%</b>	<b>83.9%</b>	<b>1.12</b>	<b>1.25</b>	<b>88.3%</b>	<b>87.0%</b>	<b>88.5%</b>	<b>51.9%</b>	<b>48.1%</b>	<b>71.8%</b>	<b>48.0%</b>
Consultant Medicine	4	6	1.43	16.7%	83.3%	2.00	1.35	83.3%	83.3%	80.0%	33.3%	66.7%	0.0%	40.0%
Consultant Paediatrics	3	6	1.97	16.7%	83.3%	1.82	2.00	66.7%	66.7%	80.0%	33.3%	66.7%	100.0%	20.0%
Consultant Psychiatry	20	26	1.31	30.8%	69.2%	1.28	1.32	84.6%	84.6%	83.3%	57.7%	42.3%	75.0%	50.0%
<b>Consultants</b>	<b>27</b>	<b>38</b>	<b>1.40</b>	<b>26.3%</b>	<b>73.7%</b>	<b>1.37</b>	<b>1.41</b>	<b>81.6%</b>	<b>80.0%</b>	<b>82.1%</b>	<b>50.0%</b>	<b>50.0%</b>	<b>70.0%</b>	<b>42.9%</b>
Registrar	11	12	1.09	50.0%	50.0%	1.08	1.09	16.7%	16.7%	0.0%	91.7%	8.3%	100.0%	83.3%
Senior Registrar	3	3	1.00	33.3%	66.7%	1.00	1.00	33.3%	33.3%	50.0%	100.0%	0.0%	100.0%	100.0%
Specialist Registrar	6	6	1.00	16.7%	83.3%	1.00	1.00	0.0%	0.0%	0.0%	100.0%	0.0%	100.0%	100.0%
<b>Registrars</b>	<b>20</b>	<b>21</b>	<b>1.05</b>	<b>38.1%</b>	<b>61.9%</b>	<b>1.06</b>	<b>1.04</b>	<b>14.3%</b>	<b>25.0%</b>	<b>7.7%</b>	<b>95.2%</b>	<b>4.8%</b>	<b>100.0%</b>	<b>92.3%</b>
<b>SHO/ Interns</b>	<b>19</b>	<b>22</b>	<b>1.15</b>	<b>40.9%</b>	<b>59.1%</b>	<b>1.05</b>	<b>1.24</b>	<b>0.0%</b>	<b>0.0%</b>	<b>0.0%</b>	<b>81.8%</b>	<b>18.2%</b>	<b>100.0%</b>	<b>69.2%</b>
<b>Medical/ Dental, other</b>	<b>99</b>	<b>184</b>	<b>1.85</b>	<b>63.6%</b>	<b>36.4%</b>	<b>1.96</b>	<b>1.68</b>	<b>86.4%</b>	<b>88.0%</b>	<b>83.6%</b>	<b>23.9%</b>	<b>76.1%</b>	<b>21.4%</b>	<b>28.4%</b>
<b>Medical &amp; Dental</b>	<b>166</b>	<b>265</b>	<b>1.60</b>	<b>54.3%</b>	<b>45.7%</b>	<b>1.73</b>	<b>1.46</b>	<b>72.8%</b>	<b>78.5%</b>	<b>66.1%</b>	<b>38.1%</b>	<b>61.9%</b>	<b>34.0%</b>	<b>43.0%</b>
Clinical Nurse/ Midwife Manager	1,344	1,444	1.07	10.3%	89.7%	1.01	1.08	95.2%	95.2%	95.5%	79.4%	20.6%	96.0%	77.5%
Director Nursing/Midwifery, Assistant	133	138	1.04	6.5%	93.5%	1.00	1.04	99.3%	99.3%	99.2%	89.9%	10.1%	100.0%	89.1%
Director of Nursing/Midwifery	142	144	1.01	6.9%	93.1%	1.03	1.01	97.9%	97.9%	97.8%	97.2%	2.8%	90.0%	97.8%
<b>Nurse/ Midwife Manager</b>	<b>1,619</b>	<b>1,726</b>	<b>1.07</b>	<b>9.7%</b>	<b>90.3%</b>	<b>1.01</b>	<b>1.07</b>	<b>95.8%</b>	<b>93.5%</b>	<b>96.0%</b>	<b>81.7%</b>	<b>18.3%</b>	<b>95.8%</b>	<b>80.2%</b>
Advanced Nurse/ Midwife Practitioner	14	14	1.01	21.4%	78.6%	1.00	1.02	100.0%	100.0%	100.0%	92.9%	7.1%	100.0%	90.9%
Clinical Nurse/ Midwife Specialist	81	93	1.15	5.4%	94.6%	1.01	1.16	98.9%	98.9%	98.9%	54.8%	45.2%	100.0%	52.3%
<b>Nurse/ Midwife Specialist &amp; AN/MP</b>	<b>95</b>	<b>107</b>	<b>1.13</b>	<b>7.5%</b>	<b>92.5%</b>	<b>1.00</b>	<b>1.14</b>	<b>99.1%</b>	<b>100.0%</b>	<b>99.0%</b>	<b>59.8%</b>	<b>40.2%</b>	<b>100.0%</b>	<b>56.6%</b>
Staff Nurse [Intellectual Disability]	1,585	1,863	1.18	8.5%	91.5%	1.12	1.18	95.4%	95.4%	95.2%	62.9%	37.1%	81.8%	61.2%
Staff Nurse [Psychiatric]	60	73	1.21	15.1%	84.9%	1.03	1.25	91.8%	91.8%	91.9%	65.8%	34.2%	90.9%	61.3%
Staff Nurses [General/ Children's]	3,509	4,092	1.17	8.1%	91.9%	1.05	1.18	96.7%	96.7%	96.9%	59.9%	40.1%	87.7%	57.5%
<b>Staff Nurse/ Staff Midwife</b>	<b>5,154</b>	<b>6,028</b>	<b>1.17</b>	<b>8.3%</b>	<b>91.7%</b>	<b>1.07</b>	<b>1.18</b>	<b>96.3%</b>	<b>95.4%</b>	<b>96.3%</b>	<b>60.9%</b>	<b>39.1%</b>	<b>85.9%</b>	<b>58.7%</b>
<b>Public Health Nurse</b>	<b>20</b>	<b>23</b>	<b>1.18</b>	<b>13.0%</b>	<b>87.0%</b>	<b>1.00</b>	<b>1.21</b>	<b>100.0%</b>	<b>100.0%</b>	<b>100.0%</b>	<b>47.8%</b>	<b>52.2%</b>	<b>100.0%</b>	<b>40.0%</b>
<b>Nursing/ Midwifery Student</b>	<b>185</b>	<b>206</b>	<b>1.11</b>	<b>4.9%</b>	<b>95.1%</b>	<b>1.24</b>	<b>1.11</b>	<b>22.3%</b>	<b>0.0%</b>	<b>23.5%</b>	<b>72.8%</b>	<b>27.2%</b>	<b>100.0%</b>	<b>71.4%</b>
Nursing Education/Clinical	27	30	1.11		100.0%		1.11	93.3%	93.3%	93.3%	76.7%	23.3%		76.7%
Other Nursing/ Midwifery	1	1	1.00	100.0%		1.00		100.0%	100.0%		100.0%	0.0%	100.0%	
<b>Nursing/ Midwifery other</b>	<b>28</b>	<b>31</b>	<b>1.10</b>	<b>3.2%</b>	<b>96.8%</b>	<b>1.00</b>	<b>1.11</b>	<b>93.5%</b>	<b>100.0%</b>	<b>93.3%</b>	<b>77.4%</b>	<b>22.6%</b>	<b>100.0%</b>	<b>76.7%</b>



<b>Nursing &amp; Midwifery</b>	<b>7,101</b>	<b>8,121</b>	<b>1.14</b>	<b>8.5%</b>	<b>91.5%</b>	<b>1.06</b>	<b>1.15</b>	<b>94.3%</b>	<b>93.6%</b>	<b>94.4%</b>	<b>65.7%</b>	<b>34.3%</b>	<b>88.7%</b>	<b>63.5%</b>
Dietitians	38	48	1.26	4.2%	95.8%	1.00	1.28	87.5%	87.5%	87.0%	52.1%	47.9%	100.0%	50.0%
Occupational Therapists	390	436	1.12	6.9%	93.1%	1.08	1.12	92.2%	92.2%	92.1%	75.7%	24.3%	90.0%	74.6%
Physiotherapists	323	370	1.15	17.0%	83.0%	1.04	1.17	92.7%	92.7%	92.8%	66.5%	33.5%	87.3%	62.2%
Podiatrists & Chiropodists	12	17	1.39	23.5%	76.5%	1.14	1.49	100.0%	100.0%	100.0%	47.1%	52.9%	75.0%	38.5%
Speech & Language Therapists	317	364	1.15	1.9%	98.1%	1.08	1.15	89.3%	89.3%	89.4%	72.5%	27.5%	85.7%	72.3%
<b>Therapy Professions</b>	<b>1,080</b>	<b>1,235</b>	<b>1.14</b>	<b>8.6%</b>	<b>91.4%</b>	<b>1.06</b>	<b>1.15</b>	<b>91.4%</b>	<b>92.5%</b>	<b>91.3%</b>	<b>70.7%</b>	<b>29.3%</b>	<b>87.7%</b>	<b>69.1%</b>
Clinical Engineering	12	12	1.00	83.3%	16.7%	1.01	1.00	83.3%	83.3%	50.0%	91.7%	8.3%	90.0%	100.0%
Clinical Measurement	1	2	1.40	50.0%	50.0%	1.00	2.33	50.0%	50.0%	0.0%	50.0%	50.0%	100.0%	0.0%
Medical Laboratory	4	4	1.00	75.0%	25.0%	1.00	1.00	75.0%	75.0%	0.0%	100.0%	0.0%	100.0%	100.0%
Phlebotomists	1	1	1.00	100.0%		1.00		0.0%	0.0%		100.0%	0.0%	100.0%	
Radiographers	6	9	1.62	11.1%	88.9%	2.00	1.59	88.9%	88.9%	87.5%	33.3%	66.7%	0.0%	37.5%
<b>Health Science/ Diagnostics</b>	<b>24</b>	<b>28</b>	<b>1.17</b>	<b>57.1%</b>	<b>42.9%</b>	<b>1.04</b>	<b>1.42</b>	<b>78.6%</b>	<b>87.5%</b>	<b>66.7%</b>	<b>71.4%</b>	<b>28.6%</b>	<b>87.5%</b>	<b>50.0%</b>
<b>Social Care</b>	<b>2,587</b>	<b>3,089</b>	<b>1.19</b>	<b>15.1%</b>	<b>84.9%</b>	<b>1.09</b>	<b>1.21</b>	<b>90.6%</b>	<b>91.8%</b>	<b>90.4%</b>	<b>48.5%</b>	<b>51.5%</b>	<b>65.5%</b>	<b>45.4%</b>
<b>Social Workers</b>	<b>324</b>	<b>373</b>	<b>1.15</b>	<b>16.6%</b>	<b>83.4%</b>	<b>1.04</b>	<b>1.18</b>	<b>93.3%</b>	<b>91.9%</b>	<b>93.6%</b>	<b>72.4%</b>	<b>27.6%</b>	<b>91.9%</b>	<b>68.5%</b>
<b>Psychologists</b>	<b>215</b>	<b>248</b>	<b>1.15</b>	<b>19.0%</b>	<b>81.0%</b>	<b>1.04</b>	<b>1.18</b>	<b>93.1%</b>	<b>89.4%</b>	<b>94.0%</b>	<b>70.2%</b>	<b>29.8%</b>	<b>83.0%</b>	<b>67.2%</b>
<b>Pharmacy</b>	<b>25</b>	<b>33</b>	<b>1.34</b>	<b>21.2%</b>	<b>78.8%</b>	<b>1.24</b>	<b>1.37</b>	<b>81.8%</b>	<b>85.7%</b>	<b>80.8%</b>	<b>51.5%</b>	<b>48.5%</b>	<b>71.4%</b>	<b>46.2%</b>
Counsellor Therapists	19	23	1.22	8.7%	91.3%	1.00	1.24	100.0%	100.0%	100.0%	47.8%	52.2%	100.0%	42.9%
Other Health & Social Care	50	62	1.25	21.0%	79.0%	1.19	1.26	88.7%	88.7%	87.8%	50.0%	50.0%	69.2%	44.9%
Play Therapists/ Specialists	13	16	1.26	18.8%	81.3%	1.00	1.34	93.8%	93.8%	92.3%	56.3%	43.8%	100.0%	46.2%
<b>H&amp;SC, Other</b>	<b>81</b>	<b>101</b>	<b>1.24</b>	<b>17.8%</b>	<b>82.2%</b>	<b>1.13</b>	<b>1.27</b>	<b>92.1%</b>	<b>94.4%</b>	<b>91.6%</b>	<b>50.5%</b>	<b>49.5%</b>	<b>77.8%</b>	<b>44.6%</b>
<b>Health &amp; Social Care</b>	<b>4,336</b>	<b>5,107</b>	<b>1.18</b>	<b>14.1%</b>	<b>85.9%</b>	<b>1.08</b>	<b>1.20</b>	<b>91.0%</b>	<b>91.7%</b>	<b>90.9%</b>	<b>56.8%</b>	<b>43.2%</b>	<b>73.0%</b>	<b>54.2%</b>
Executive Management	46	46	1.00	41.3%	58.7%	1.00	1.01	93.5%	93.5%	92.6%	100.0%	0.0%	100.0%	100.0%
Senior Management (VIII & GM)	217	222	1.02	30.6%	69.4%	1.01	1.03	95.9%	95.9%	95.5%	94.6%	5.4%	97.1%	93.5%
<b>Management (VIII &amp; above)</b>	<b>263</b>	<b>268</b>	<b>1.02</b>	<b>32.5%</b>	<b>67.5%</b>	<b>1.01</b>	<b>1.03</b>	<b>95.5%</b>	<b>96.6%</b>	<b>95.0%</b>	<b>95.5%</b>	<b>4.5%</b>	<b>97.7%</b>	<b>94.5%</b>
Middle Management (V-VII)	652	700	1.07	20.6%	79.4%	1.03	1.09	93.7%	93.7%	94.6%	79.4%	20.6%	91.7%	76.3%
Other Administrative	17	17	1.01	29.4%	70.6%	1.00	1.02	88.2%	88.2%	100.0%	94.1%	5.9%	100.0%	91.7%
<b>Administrative/ Supervisory (V to VII)</b>	<b>669</b>	<b>717</b>	<b>1.07</b>	<b>20.8%</b>	<b>79.2%</b>	<b>1.02</b>	<b>1.09</b>	<b>93.6%</b>	<b>89.3%</b>	<b>94.7%</b>	<b>79.8%</b>	<b>20.2%</b>	<b>91.9%</b>	<b>76.6%</b>
<b>Clerical (III &amp; IV)</b>	<b>1,252</b>	<b>1,484</b>	<b>1.19</b>	<b>8.4%</b>	<b>91.6%</b>	<b>1.08</b>	<b>1.20</b>	<b>89.6%</b>	<b>79.0%</b>	<b>90.5%</b>	<b>59.1%</b>	<b>40.9%</b>	<b>77.4%</b>	<b>57.4%</b>
<b>Management &amp; Administrative</b>	<b>2,183</b>	<b>2,469</b>	<b>1.13</b>	<b>14.6%</b>	<b>85.4%</b>	<b>1.04</b>	<b>1.15</b>	<b>91.4%</b>	<b>87.5%</b>	<b>92.0%</b>	<b>69.1%</b>	<b>30.9%</b>	<b>88.3%</b>	<b>65.8%</b>
Catering	326	376	1.15	31.6%	68.4%	1.09	1.19	97.3%	97.3%	98.1%	66.5%	33.5%	90.8%	55.3%
Household Services	916	1,162	1.27	15.7%	84.3%	1.20	1.28	89.9%	89.9%	91.6%	44.4%	55.6%	68.3%	39.9%
Other Labs & Associated	1	1	1.00		100.0%		1.00	100.0%	100.0%	100.0%	100.0%	0.0%		100.0%
Other Support	214	355	1.66	37.7%	62.3%	1.29	2.02	81.4%	81.4%	78.7%	23.7%	76.3%	50.7%	7.2%
Portering	107	119	1.12	98.3%	1.7%	1.11	1.30	87.4%	87.4%	100.0%	78.2%	21.8%	78.6%	50.0%

<b>Support</b>	<b>1,563</b>	<b>2,013</b>	<b>1.29</b>	<b>27.5%</b>	<b>72.5%</b>	<b>1.17</b>	<b>1.34</b>	<b>89.7%</b>	<b>86.6%</b>	<b>90.8%</b>	<b>46.9%</b>	<b>53.1%</b>	<b>71.1%</b>	<b>37.7%</b>
Maintenance	216	233	1.08	95.3%	4.7%	1.07	1.36	<b>94.0%</b>	94.0%	100.0%	<b>82.8%</b>	17.2%	85.1%	36.4%
Technical Services	8	8	0.99	62.5%	37.5%	0.98	1.00	<b>100.0%</b>	100.0%	100.0%	<b>100.0%</b>	0.0%	100.0%	100.0%
<b>Maintenance/ Technical</b>	<b>224</b>	<b>241</b>	<b>1.07</b>	<b>94.2%</b>	<b>5.8%</b>	<b>1.06</b>	<b>1.26</b>	<b>94.2%</b>	<b>93.8%</b>	<b>100.0%</b>	<b>83.4%</b>	<b>16.6%</b>	<b>85.5%</b>	<b>50.0%</b>
<b>General Support</b>	<b>1,788</b>	<b>2,254</b>	<b>1.26</b>	<b>34.6%</b>	<b>65.4%</b>	<b>1.14</b>	<b>1.34</b>	<b>90.2%</b>	<b>88.7%</b>	<b>90.9%</b>	<b>50.8%</b>	<b>49.2%</b>	<b>75.3%</b>	<b>37.9%</b>
HCA, Nurse's Aide, etc.	10,984	12,976	1.18	21.6%	78.4%	1.10	1.21	<b>85.7%</b>	85.7%	85.8%	<b>54.9%</b>	45.1%	70.0%	50.7%
Health & Social Care Assistants	33	40	1.20	25.0%	75.0%	1.03	1.27	<b>92.5%</b>	92.5%	90.0%	<b>65.0%</b>	35.0%	100.0%	53.3%
<b>Health Care Assistants</b>	<b>11,017</b>	<b>13,016</b>	<b>1.18</b>	<b>21.6%</b>	<b>78.4%</b>	<b>1.10</b>	<b>1.21</b>	<b>85.7%</b>	<b>85.2%</b>	<b>85.9%</b>	<b>54.9%</b>	<b>45.1%</b>	<b>70.1%</b>	<b>50.7%</b>
<b>Home Help</b>	<b>3,255</b>	<b>5,445</b>	<b>1.67</b>	<b>3.4%</b>	<b>96.6%</b>	<b>1.62</b>	<b>1.67</b>	<b>81.1%</b>	<b>68.8%</b>	<b>81.5%</b>	<b>9.4%</b>	<b>90.6%</b>	<b>10.8%</b>	<b>9.4%</b>
<b>Care, other</b>	<b>1,732</b>	<b>2,072</b>	<b>1.20</b>	<b>26.8%</b>	<b>73.2%</b>	<b>1.16</b>	<b>1.21</b>	<b>88.9%</b>	<b>86.9%</b>	<b>89.6%</b>	<b>60.5%</b>	<b>39.5%</b>	<b>72.3%</b>	<b>56.2%</b>
<b>Patient &amp; Client Care</b>	<b>16,005</b>	<b>20,533</b>	<b>1.28</b>	<b>17.3%</b>	<b>82.7%</b>	<b>1.13</b>	<b>1.32</b>	<b>84.8%</b>	<b>84.6%</b>	<b>84.8%</b>	<b>43.4%</b>	<b>56.6%</b>	<b>67.3%</b>	<b>38.4%</b>

## Employment by WTE, Headcount, Gender, Full-Time /Part-Time etc.: May 2020

Social Care Services CHO	WTE	Headcount	WTE: no.	% Male	% female	Male WTE: no.	Female WTE: no.	% Total Perm	% Male Perm	% Female Perm	% Total Full Time	% Total Part Time	% Male FT	% Female FT
<b>Overall</b>	<b>31,578</b>	<b>38,749</b>	<b>1.23</b>	<b>16.1%</b>	<b>83.9%</b>	<b>1.12</b>	<b>1.25</b>	<b>88.3%</b>	<b>87.0%</b>	<b>88.5%</b>	<b>51.9%</b>	<b>48.1%</b>	<b>71.8%</b>	<b>48.0%</b>
<b>CHO 1</b>	<b>3,358</b>	<b>3,972</b>	<b>1.18</b>	<b>15.9%</b>	<b>84.1%</b>	<b>1.09</b>	<b>1.20</b>	<b>78.2%</b>	<b>78.2%</b>	<b>77.1%</b>	<b>57.1%</b>	<b>42.9%</b>	<b>80.4%</b>	<b>52.7%</b>
HSE	1,779	2,129	1.20	13.3%	86.7%	1.05	1.22	89.3%	89.3%	89.8%	48.7%	51.3%	88.0%	88.0%
Section 38	1,254	1,611	1.28	21.8%	78.2%	1.18	1.32	80.3%	80.3%	80.7%	37.6%	62.4%	44.7%	44.7%
<b>CHO 2</b>	<b>3,033</b>	<b>3,740</b>	<b>1.23</b>	<b>17.0%</b>	<b>83.0%</b>	<b>1.12</b>	<b>1.26</b>	<b>85.4%</b>	<b>85.4%</b>	<b>86.1%</b>	<b>43.9%</b>	<b>56.1%</b>	<b>64.0%</b>	<b>39.8%</b>
HSE	1,093	1,528	1.40	12.5%	87.5%	1.08	1.46	92.5%	92.5%	93.9%	48.8%	51.2%	88.0%	88.0%
Section 38	1,745	2,087	1.20	11.8%	88.2%	1.18	1.20	84.2%	84.2%	84.8%	39.1%	60.9%	40.2%	40.2%
<b>CHO 3</b>	<b>2,838</b>	<b>3,615</b>	<b>1.27</b>	<b>12.1%</b>	<b>87.9%</b>	<b>1.13</b>	<b>1.30</b>	<b>87.7%</b>	<b>87.7%</b>	<b>88.7%</b>	<b>43.2%</b>	<b>56.8%</b>	<b>61.1%</b>	<b>40.8%</b>
HSE	3,258	4,312	1.32	11.7%	88.3%	1.16	1.35	99.9%	99.9%	99.9%	33.8%	66.2%	64.6%	64.6%
Section 38	2,157	2,641	1.22	19.2%	80.8%	1.17	1.24	84.1%	84.1%	85.3%	63.1%	36.9%	68.8%	68.8%
<b>CHO 4</b>	<b>5,415</b>	<b>6,953</b>	<b>1.28</b>	<b>14.6%</b>	<b>85.4%</b>	<b>1.17</b>	<b>1.31</b>	<b>93.9%</b>	<b>93.9%</b>	<b>94.7%</b>	<b>44.9%</b>	<b>55.1%</b>	<b>66.7%</b>	<b>41.2%</b>
HSE	1,974	2,547	1.29	9.5%	90.5%	1.13	1.31	99.5%	99.5%	99.4%	45.0%	55.0%	74.5%	74.5%
Section 38	1,106	1,309	1.18	20.9%	79.1%	1.11	1.21	84.5%	84.5%	84.5%	46.1%	53.9%	60.1%	60.1%
<b>CHO 5</b>	<b>3,080</b>	<b>3,856</b>	<b>1.25</b>	<b>13.4%</b>	<b>86.6%</b>	<b>1.12</b>	<b>1.28</b>	<b>94.4%</b>	<b>94.4%</b>	<b>94.8%</b>	<b>45.4%</b>	<b>54.6%</b>	<b>66.9%</b>	<b>42.1%</b>
HSE	599	675	1.13	20.1%	79.9%	1.04	1.15	76.1%	76.1%	77.7%	73.9%	26.1%	87.5%	87.5%
Section 38	1,398	1,610	1.15	24.1%	75.9%	1.12	1.16	94.4%	94.4%	94.2%	69.8%	30.2%	80.2%	80.2%
<b>CHO 6</b>	<b>1,997</b>	<b>2,285</b>	<b>1.14</b>	<b>22.9%</b>	<b>77.1%</b>	<b>1.10</b>	<b>1.16</b>	<b>89.0%</b>	<b>89.0%</b>	<b>89.2%</b>	<b>71.0%</b>	<b>29.0%</b>	<b>82.1%</b>	<b>67.7%</b>
HSE	1,138	1,418	1.25	14.7%	85.3%	1.13	1.27	89.6%	89.6%	89.9%	61.7%	38.3%	80.3%	80.3%
Section 38	2,849	3,395	1.19	23.2%	76.8%	1.10	1.22	87.7%	87.7%	88.0%	66.6%	33.4%	82.0%	82.0%
<b>CHO 7</b>	<b>3,987</b>	<b>4,813</b>	<b>1.21</b>	<b>20.7%</b>	<b>79.3%</b>	<b>1.11</b>	<b>1.24</b>	<b>88.3%</b>	<b>88.3%</b>	<b>88.6%</b>	<b>65.2%</b>	<b>34.8%</b>	<b>81.6%</b>	<b>60.9%</b>
HSE	2,116	2,669	1.26	12.5%	87.5%	1.15	1.28	81.1%	81.1%	80.5%	50.2%	49.8%	76.9%	76.9%
Section 38	1,570	1,914	1.22	21.0%	79.0%	1.14	1.24	95.0%	95.0%	95.0%	39.9%	60.1%	49.1%	49.1%
<b>CHO 8</b>	<b>3,686</b>	<b>4,583</b>	<b>1.24</b>	<b>16.0%</b>	<b>84.0%</b>	<b>1.15</b>	<b>1.26</b>	<b>86.9%</b>	<b>86.9%</b>	<b>86.2%</b>	<b>45.9%</b>	<b>54.1%</b>	<b>61.8%</b>	<b>42.9%</b>
HSE	1,100	1,238	1.13	24.4%	75.6%	1.06	1.15	85.9%	85.9%	86.2%	77.1%	22.9%	89.4%	89.4%
Section 38	3,012	3,615	1.20	12.2%	87.8%	1.10	1.22	87.6%	87.6%	87.7%	51.6%	48.4%	67.5%	67.5%
<b>CHO 9</b>	<b>4,112</b>	<b>4,853</b>	<b>1.18</b>	<b>15.3%</b>	<b>84.7%</b>	<b>1.08</b>	<b>1.20</b>	<b>87.2%</b>	<b>87.2%</b>	<b>87.4%</b>	<b>58.1%</b>	<b>41.9%</b>	<b>76.4%</b>	<b>54.8%</b>
<b>other Community Services</b>	<b>72</b>	<b>79</b>	<b>1.09</b>	<b>29.1%</b>	<b>70.9%</b>	<b>1.07</b>	<b>1.10</b>	<b>82.3%</b>	<b>82.3%</b>	<b>80.4%</b>	<b>84.8%</b>	<b>15.2%</b>	<b>91.3%</b>	<b>82.1%</b>

Summary Staff Movement: May 2020

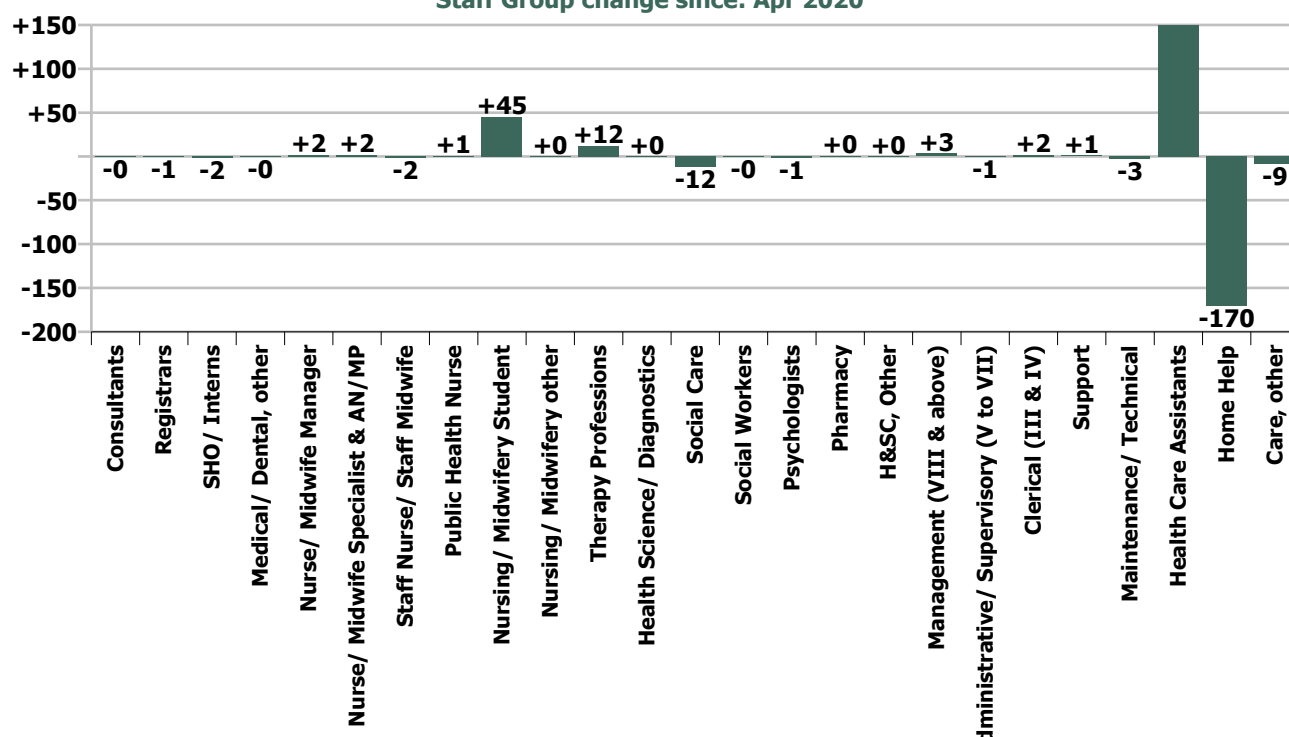
Month-on-month  
Summary

WTE change since Apr 20	% change since Apr 20	overall	Consultants	Registrars	SHO/ Interns	Medical/ Dental, other	Medical & Dental	Nurse/ Midwife Manager	Nurse/ Midwife Specialist & AN/MP	Staff Nurse/ Staff Midwife	Public Health Nurse	Nursing/ Midwifery Student	Nursing/ Midwifery other	Nursing & Midwifery	Therapy Professions	Health Science/ Diagnostics	Social Care	Social Workers	Psychologists	Pharmacy	H&SC, Other	Health & Social Care Professionals	Management (VIII & above)	Administrative Supervisory (V to VII)	Clerical (III & IV)	Management & Administrative	Support	Maintenance/ Technical	General Support	Health Care Assistants	Home Help	Care, other	Patient & Client Care
Overall	+0.3%	+102	-0.2	-0.9	-1.5	-0.2	-2.9	+1.9	-1.6	+0.6	+45.0	+0.2	+48.1	+12.2	+0.3	-11.9	-0.2	-1.4	+0.5	+0.2	-0.2	+3.4	-0.7	+2.2	+5.0	+1.1	-2.6	-1.6	+232.4	-170.4	-8.6	+53.4	
CHO 1	+0.1%	+4					0.0	+0.5		-3.3		+2.5	+0.1	-0.3	-0.7		-0.1	-0.1	+0.2		+0.2	-0.6	+1.0	+1.6	-2.3	+0.3	-4.9	-4.9	+21.4	-10.9	-0.6	+9.9	
Disabilities	+1.7%	+24						+0.5	+0.3	-0.1				+0.7	-1.8		+1.4	+0.1	-0.0			-0.3	+1.0	-1.0	+1.1	+1.1	+0.8	+0.8	+20.9		+1.2	+22.1	
Older People	+1.7%	+26						+1.3		-3.8				-2.5	+0.7			-0.9				-0.2	-1.0	+0.0	+0.2	-0.8	-0.0	-0.1	-0.0	+25.0	+4.7	-0.3	+29.4
CHO 2	+1.7%	+50					+0.0	+1.7	+0.3	-3.9				-1.8	-1.1		+1.4	-0.8	-0.0			-0.5		-0.9	+1.3	+0.3	+0.8	-0.1	+0.8	+45.9	+4.7	+0.9	+51.5
Disabilities	+2.0%	+36	+0.1				+0.1	+4.6		-1.0		+0.1		+3.7	+0.2	+0.3	+13.8	-1.0	+1.6		+0.5	+15.4		-0.5	-0.8	-1.4	-1.0	+0.1	-0.9	+26.1		-6.7	+19.5
Older People	-0.8%	-8					-2.2			-7.3				-9.6	-0.2	-0.0		+0.3				+0.1	-0.6	+0.1	+0.7	+0.2	+0.2	-0.6	-0.4	+21.3	-22.8	+3.1	+1.5
CHO 3	+1.0%	+28	+0.1				+0.1	+2.4		-8.3		+0.1		-5.9	+0.0	+0.3	+13.8	-0.7	+1.6		+0.5	+15.4	-0.6	-0.4	-0.2	-1.1	-0.8	-0.5	-1.3	+47.4	-22.8	-3.5	+21.0
Disabilities	+0.8%	+20	-0.3				-0.3	-0.1		-1.6		+19.9		+18.1	-0.8		-3.7	+0.3	-0.1		-0.0	-4.4	+1.3	-0.0	-0.4	+0.9	-0.7	-0.0	-0.7	+9.1		-2.9	+6.2
Older People	+0.1%	+2				-0.5	-0.5	+1.1	+1.0	+3.0	+0.1			+5.1	-0.4					+0.1		-0.4	+0.3	+3.1	+3.4	+7.8	+7.8	+37.9	-51.6	-0.3	-14.0		
CHO 4	+0.4%	+21	-0.3				-0.5	-0.8	+0.9	+1.0	+1.4	+0.1	+19.9	+23.3	-1.2		-3.7	+0.3	-0.1	+0.1	-0.0	-4.7	+1.3	+0.3	+2.7	+4.3	+7.1	+7.1	+47.0	-51.6	-3.2	-7.8	
Disabilities	-0.6%	-8						-2.6		-3.9	+0.6	+5.5		-0.4	+0.4		-2.4	+0.3	-0.5		-0.0	-2.2	+1.0	-0.9	+0.6	+0.6	+0.3	+0.3	-4.8	-3.7	+1.9	-6.6	
Older People	-2.3%	-37				-0.0	-0.0	-0.6		+1.5				+0.9	+1.0			-0.1		-0.1		+0.8			+0.0	+0.0	+2.8	-0.3	+2.5	+35.1	-76.8	+0.1	-41.6
CHO 5	-1.5%	-46					-0.0	-0.0	-3.1	-2.4	+0.6	+5.5		+0.6	+1.4		-2.4	+0.2	-0.5	-0.1	-0.0	-1.3	+1.0	-0.9	+0.6	+0.7	+3.1	-0.3	+2.8	+30.3	-80.5	+2.0	-48.2
Disabilities	-0.9%	-11						-0.5		+0.9				+0.3	-0.2		-8.4	+0.8	+0.2		-1.1	-8.6	+0.9	+0.1	+0.0	+1.0	-2.0	-0.1	-2.1	-1.2		-0.4	-1.6
Older People	+3.8%	+31						+0.3		-0.8				-0.5	+0.6			+0.2	-0.0	-0.1		+0.7		+0.0	+0.1	+0.1	-0.8		-0.8	+32.0		-0.0	+31.9
CHO 6	+1.0%	+20					0.0	-0.2		+0.1				-0.2	+0.4		-8.4	+1.1	+0.2	-0.1	-1.1	-7.9	+0.9	+0.1	+0.1	+1.1	-2.8	-0.1	-2.9	+30.8		-0.4	+30.4
Disabilities	-0.3%	-8		-0.9	-1.9		-2.8	-0.6	+0.1	+4.0			+7.5	+11.1	+8.4		-4.3	+0.4	+0.0	+0.3		+4.8	+0.9	+0.8	+1.4	+3.1	+2.8	-2.0	+0.9	-25.2	-0.0	+0.4	-24.9
Older People	+0.1%	+1					-2.4	+0.4	+12.9	-5.9				+4.9	-0.8			-1.3				-2.1	+0.2	-0.1	-0.9	-0.7	-2.2	-2.2	+4.2	-2.8	-0.3	+1.0	
CHO 7	-0.2%	-7		-0.9	-1.9		-2.8	-3.0	+0.5	+17.0		+1.5		+16.0	+7.5		-4.3	-0.9	+0.0	+0.3		+2.7	+1.1	+0.8	+0.5	+2.4	+0.7	-2.0	-1.3	-21.0	-2.8	+0.0	-23.9
Disabilities	+0.4%	+9					-0.6	+0.1	+1.1	+1.1		+11.3	+0.0	+11.9	+2.6		-0.4	+0.2	-0.7		-0.1	+1.6	+0.2	-0.8	+1.2	+0.5	+0.4	+0.2	+0.5	-2.2	-0.1	-3.1	-5.4
Older People	+1.6%	+23					+2.7			-0.9				+1.7	-0.6			+0.0			+0.1	-0.5	+0.3	-1.1	+0.2	-0.6	+1.3	+0.1	+1.4	+26.1	-6.2	+1.3	+21.2
CHO 8	+0.9%	+32					0.0	+2.1	+0.1	+0.1		+11.3	+0.0	+13.6	+2.0		-0.4	+0.3	-0.7	+0.1	-0.1	+1.1	+0.4	-1.9	+1.4	-0.1	+1.7	+0.3	+2.0	+24.0	-6.4	-1.7	+15.8
Disabilities	-0.5%	-18	-0.0			+0.3	+0.3	-0.4		-2.1		+4.3	+0.1	+1.9	+0.9		-7.7	+0.2	-2.0		+0.9	-7.7		+0.8	-0.8	+0.0	-5.7		-5.7	-5.0	-1.3	-6.4	
Older People	+1.8%	+16			+0.3	+0.3	+1.1	+0.1	+0.1	-0.2	-0.1			+0.8	+3.0		-0.1	+0.3			+0.2	+3.4	-1.0	-0.2	-0.1	-1.4	+1.9	+11.8		+11.8	-0.6	+11.1	
CHO 9	-0.0%	-1			+0.3	+0.3	+0.6	+0.7	+0.1	-2.3	-0.1	+4.3	+0.1	+2.7	+3.9		-7.8	+0.5	-2.0	+0.2	+0.9	-4.3	-1.0	+0.6	-0.9	-1.3	-3.8	-3.8	+6.7		-2.0	+4.7	
Disabilities																								-0.8	+0.2	-1.0	-1.5						
Older People	-2.2%	-2																						-0.8	+0.2	-1.0	-1.5						
other Community Services	-2.0%	-2																						-0.8	+0.2	-1.0	-1.5						0.0
		+0.3%	-0.9%	-4.2%	-7.5%	-0.2%	-1.7%	+0.1%	+2.1%	-0.0%	+3.0%	+32.2%	+0.8%	+0.7%	+1.1%	+1.3%	-0.5%	-0.1%	-0.6%	+2.0%	+0.3%	-0.0%	+1.3%	-0.1%	+0.2%	+0.2%	+0.1%	-1.2%	-0.1%	+2.2%	-5.0%	-0.5%	+0.3%

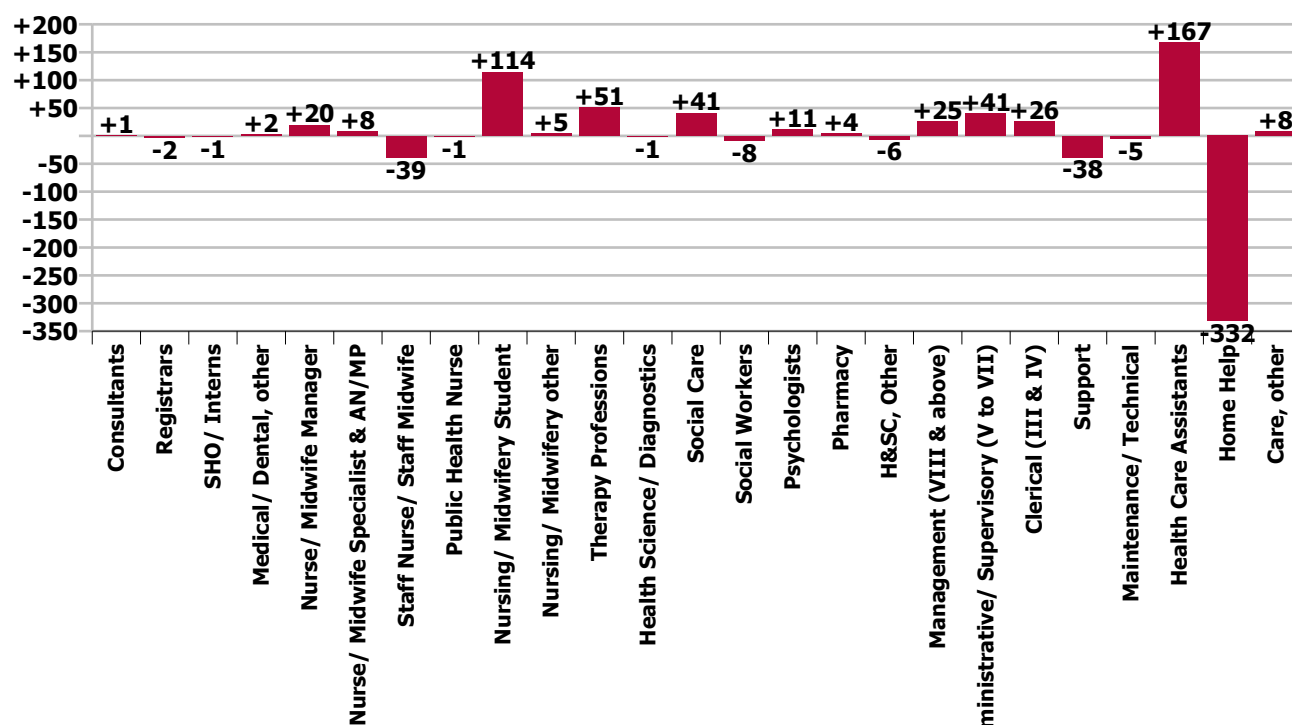
Year-on-year Summary

WTE change since May 19	% change since May 19	overall	Consultants	Registrars	SHO/ Interns	Medical/ Dental, other	Medical & Dental	Nurse/ Midwife Manager	Nurses/ Midwife Specialist & AN/MP	Staff Nurse/ Staff Midwife	Public Health Nurse	Nursing/ Midwifery Student	Nursing/ Midwifery other	Nursing & Midwifery	Therapy Professions	Health Science/ Diagnostics	Social Care	Social Workers	Psychologists	Pharmacy	H&SC, Other	Health & Social Care Professionals	Management (VIII & above)	Administrative Supervisory (V to VII)	Clerical (III & IV)	Management & Administrative	Support	Maintenance/ Technical	General Support	Health Care Assistants	Home Help	Care, other	Patient & Client Care	
Overall	+0.3%	+92	+1	-2	-1	+2	-1	+20	+8	-39	-1	+114	+5	+107	+51	-1	+41	-8	+11	+4	-6	+93	+25	+41	+26	+92	-38	-5	-43	+167	-332	+8	-157	
Disabilities	+1.6%	+23	-1			+0	-1	+0	+1	-12		+28	+0	+17	+11		+0	+5	+2		-4	+15	+1	+9	+1	+11	+0		+0	-17	-1	-1	-19	
Older People	-1.7%	-32				+3	+3	-7	+3	-1				-5	-2	-0		+1				-1		+0	-1	-0	-6		-6	+17	-38	-2	-23	
CHO 1	-0.3%	-9	-1			+3	+2	-7	+4	-13		+28	+0	+12	+9	-0	+0	+6	+2		-4	+14	+1	+9	+0	+11	-5		-5	+0	-38	-4	-42	
Disabilities	+1.1%	+16	+1			+1	+1	-0	+1	-2				-1	-4		+17	-0	-2		-3	+7	+1	+2	-2	-3	-6	+0	-6	+15		+3	+18	
Older People	-2.2%	-36				-1	-1	-0	+1	-1	+0			-0	-1				+1		+1	-1		+0	-3	-2	-5	-1	-6	+3	-25	-2	-25	
CHO 2	-0.6%	-20	+1			-1	-0	+1	+1	-3	+0			-1	-6		+17	-1	-2		+1	-3	+6	+1	-2	-4	-5	-11	-1	-12	+18	-25	+0	-7
Disabilities	+3.5%	+63	-0				-0	+7	+1	-6		+17	-0	+19	+0	+1	+10	-2	+4		+0	+13		-1	+3	+2	-3	+1	-2	+31		+0	+31	
Older People	+0.3%	+3					-2			-14	+1			-15	+1	+0		-2				-1	+2	+3	+0	+6	+0		-1	+10	+0	+3	+14	
CHO 3	+2.4%	+66	-0				-0	+5	+1	-20	+1	+17	-0	+4	+1	+1	+10	-4	+4		+0	+13	+2	+3	+3	+8	-3	-0	-3	+41	+0	+4	+45	
Disabilities	+0.7%	+17				+0	+17	-2	-9			+17		+6	-2		+3	-0	-1		+1	+1	+5	+4	+1	+10	+1	-1	+0	-6		+6	-0	
Older People	-0.6%	-17		+1	-1	+1	+1	+28	+2	-26	-1	+1		+4	-2	+0		-1			+1	-2	+2	+9	-4	+8	+10	-0	+10	+32	-69	-1	-38	
CHO 4	+0.0%	+0		+1	-1	+1	+1	+28	+0	-35	-1	+18		+10	-4	+0	+3	-1	-1	+1	+1	-1	+8	+13	-3	+18	+11	-1	+10	+26	-69	+5	-39	
Disabilities	+2.9%	+42	-0			-0	-0	-3		+15		+4		+17	+2		-16	+1	+1		-0	-12	+2	+2	+1	+5	-10	-2	-12	+45	-12	+11	+43	
Older People	-6.0%	-101				-0	-0	-4	-0	+16	-1			+11	-0			-0		+1		+0	+1	+0	-1	+0	-6	+0	-6	+41	-147	-0	-107	
CHO 5	-1.9%	-60	-0			-0	-0	-6	-0	+31	-1	+4		+28	+2		-16	+0	+1	+1	-0	-11	+3	+2	-0	+5	-16	-2	-17	+85	-160	+10	-64	
Disabilities	-1.2%	-14				+1	+1			-13				-11	+3		-18	-5	+3		-0	-17	+1	+8	+7	+16	+9	+4	+13	-8		-6	-14	
Older People	+2.9%	+24		-1		-1	-2			+5				+3	-1			+2	-0			-1	+2	-2	+2	+1	-0	+2	+1	+22		-2	+20	
CHO 6	+0.5%	+11		-1			-1	-0		-8				-8	+2		-18	-6	+5	-0	-0	-18	+3	+5	+8	+17	+8	+5	+14	+15		-8	+7	
Disabilities	+1.1%	+33		-2	-1		-2	-6	-0	+5		+8		+7	+22		+10	+4	-3	+1		+34	+5	+2	+9	+16	-3	-2	-5	-22	-3	+10	-15	
Older People	-1.6%	-17				-1	-1	-0	-0	+14		+3		+17	-4			-2			-1	-7	+2	-1	+4	+5	-12	-1	-13	-26	+9	-1	-18	
CHO 7	+0.4%	+16		-2	-1	-1	-3	-6	-1	+19		+11		+24	+18		+10	+1	-3	+1	-1	+26	+7	+1	+13	+21	-16	-3	-18	-48	+6	+9	-33	
Disabilities	+1.8%	+38		-1			-1	-1	+1	-1		+20	+2	+20	+7		+1	-1	+0		-1	+8	+0	+6	+5	+11	-4	-0	-4	+7	-1	-4	+3	
Older People	-0.8%	-12				-0	-0	+2	+0	+1	-0			+4	+2			-2		+1		+1	+3	+2	+9	+14	+4	-0	+4	+11	-45	-0	-35	
CHO 8	+0.7%	+26		-1		-0	-1	+1	+1	+1	-0	+20	+2	+24	+10		+1	-2	+0	+1	+0	+9	+4	+8	+14	+26	+0	-1	-0	+18	-46	-4	-32	
Disabilities	+2.0%	+63	+1			+1	+0	+2	+0	+1	-6		+17	+3	+15	+9	-2	+34	+1	+4		+1	+47	-0	+5	+1	+6	-12	-3	-15	+12		-4	+8
Older People	+0.5%	+4	+1	+0	+0		+1	+4	+2	-6	-0			+0	+10	-1	+0	-2		+0	+0	+4	+8	-1	-3	-4	-8	+4	+1		+1		-1	+0
CHO 9	+1.7%	+67	+1	+0	+1	+0	+3	+4	+3	-12	-0	+17	+3	+15	+19	-3	+34	-1	+4	+0	+1	+55	-1	+2	-3	-2	-8	-3	-11	+13		-5	+8	
Disabilities																																		
Older People	-8.0%	-6																																
other Community Services	-7.5%	-6																																
		+0.3%	+2.7%	-11.0%	-4.1%	+2.0%	-0.4%	+1.2%	+9.8%	-0.7%	-6.9%	+162.3%	+20.1%	+1.5%	+5.0%	-4.2%	+1.6%	-2.4%	+5.3%	+20.0%	-6.8%	+2.2%	+10.7%	+6.5%	+2.1%	+4.4%	-2.4%	-2.0%	-2.3%	+1.5%	-9.3%	+0.5%	-1.0%	

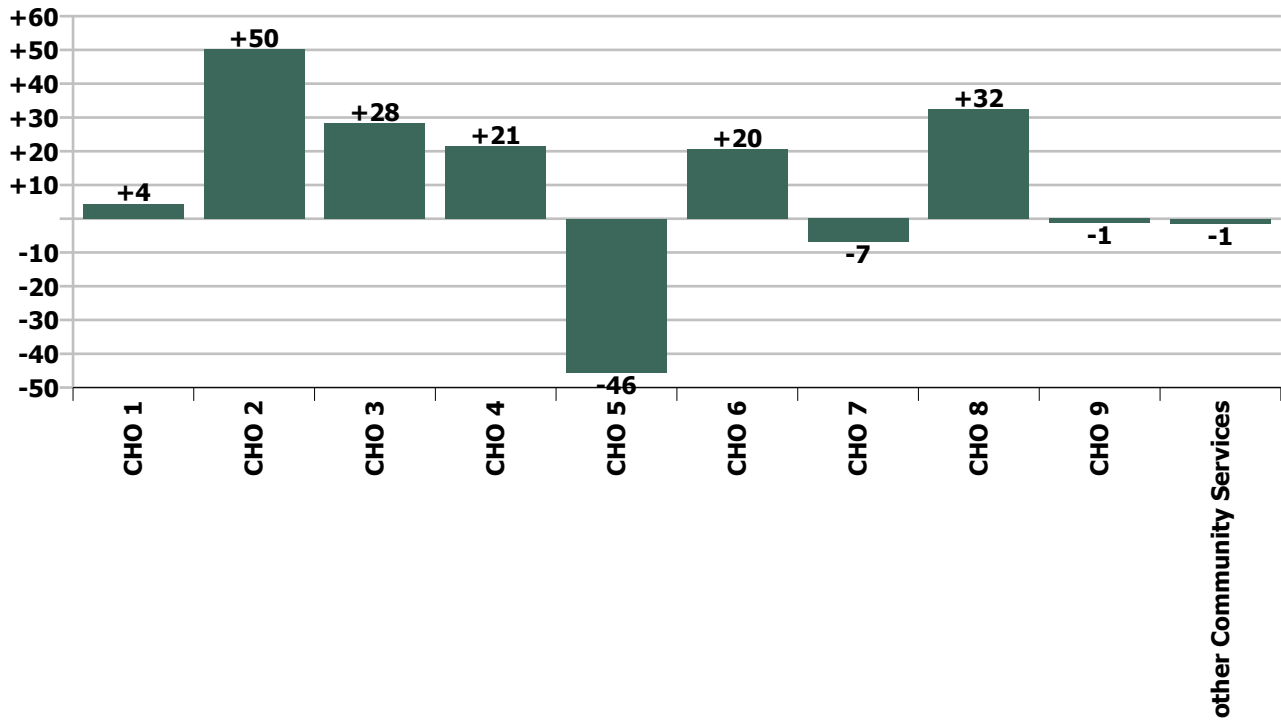
Staff Group change since: Apr 2020



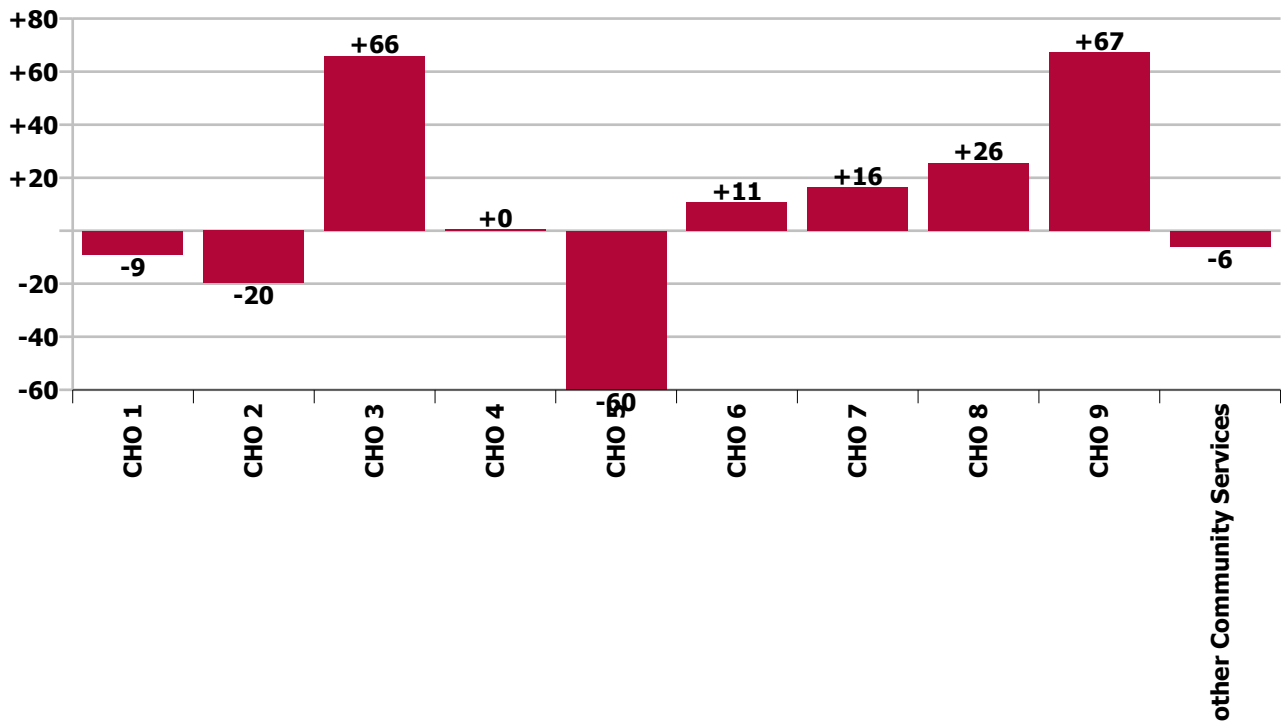
Staff Group change since: May 2019



CHO change since: Apr 2020



CHO change since: May 2019





## Longitudinal Employment Levels by Grade Group - Oct 2013 to May 2020

May 2020 (Oct 2013 figure: 26,374)	WTE May 2020	WTE change since Oct 13	WTE change since Dec 15	WTE change since Dec 16	WTE change since Dec 17	WTE change since Dec 18	WTE change since Dec 19	% change since Oct 13	% change since Dec 15	% change since Dec 16	% change since Dec 17	% change since Dec 18	% change since Dec 19
<b>Overall</b>	<b>31,578</b>	<b>+5,204</b>	<b>+3,256</b>	<b>+2,341</b>	<b>+1,077</b>	<b>+454</b>	<b>+43</b>	<b>+19.7%</b>	<b>+11.5%</b>	<b>+8.0%</b>	<b>+3.5%</b>	<b>+1.5%</b>	<b>+0.1%</b>
Consultant Medicine	4	+1	-4	-7	-5	+1	+1	+17.0%	-48.8%	-61.7%	-54.3%	+16.7%	+16.7%
Consultant Paediatrics	3	+0	-0	-0	-0			+6.6%	-3.5%	-5.0%	-2.9%		
Consultant Psychiatry	20	-9	-2	-2	-4	+2	-1	-32.0%	-9.2%	-9.5%	-16.0%	+11.1%	-4.5%
Consultant Radiology		-0						-100.0%	-100.0%	-100.0%	-100.0%	-100.0%	-100.0%
Consultant Surgery		-1	-1	-1	-0	-0		-100.0%	-100.0%	-100.0%	-100.0%	-100.0%	-100.0%
<b>Consultants</b>	<b>27</b>	<b>-10</b>	<b>-7</b>	<b>-10</b>	<b>-9</b>	<b>+2</b>	<b>-0</b>	<b>-26.6%</b>	<b>-21.0%</b>	<b>-26.6%</b>	<b>-24.9%</b>	<b>+10.0%</b>	<b>-1.2%</b>
Registrar	11	-6	-3	-0	-2	-2	-2	-33.4%	-21.5%	-4.0%	-18.2%	-12.9%	-18.2%
Senior Registrar	3	-1	-1		-1	-1		-25.0%	-25.0%		-25.0%	-25.0%	
Specialist Registrar	6	+2	+1	+2	+1	+4		+50.0%	+20.0%	+50.0%	+20.0%	+200.0%	
<b>Registrars</b>	<b>20</b>	<b>-5</b>	<b>-3</b>	<b>+2</b>	<b>-2</b>	<b>+1</b>	<b>-2</b>	<b>-18.4%</b>	<b>-13.1%</b>	<b>+8.3%</b>	<b>-10.9%</b>	<b>+7.3%</b>	<b>-10.9%</b>
<b>SHO/ Interns</b>	<b>19</b>	<b>-1</b>	<b>+3</b>	<b>+3</b>	<b>+2</b>	<b>+0</b>	<b>-3</b>	<b>-6.8%</b>	<b>+20.6%</b>	<b>+19.4%</b>	<b>+12.7%</b>	<b>+0.9%</b>	<b>-13.3%</b>
Dentists			-1					-100.0%	-100.0%	-100.0%	-100.0%	-100.0%	-100.0%
Other Medical	99	-2	+1	-1	-1	-0	-11	-2.0%	+1.3%	-1.3%	-0.7%	-0.1%	-10.3%
<b>Medical/ Dental, other</b>	<b>99</b>	<b>-2</b>	<b>+1</b>	<b>-1</b>	<b>-1</b>	<b>-0</b>	<b>-11</b>	<b>-2.0%</b>	<b>+0.7%</b>	<b>-1.3%</b>	<b>-0.7%</b>	<b>-0.1%</b>	<b>-10.3%</b>
<b>Medical &amp; Dental</b>	<b>166</b>	<b>-18</b>	<b>-6</b>	<b>-7</b>	<b>-10</b>	<b>+4</b>	<b>-17</b>	<b>-9.7%</b>	<b>-3.6%</b>	<b>-3.8%</b>	<b>-5.7%</b>	<b>+2.4%</b>	<b>-9.3%</b>
Clinical Nurse/ Midwife Manager	1,344	+69	+18	-2	+7	+12	+25	+5.4%	+1.4%	-0.1%	+0.6%	+0.9%	+1.9%
Director Nursing/Midwifery, Assistant	133	+13	+11	+3	+4	+8	-10	+10.8%	+8.7%	+2.5%	+3.4%	+6.8%	-7.1%
Director of Nursing/Midwifery	142	+28	+14	+13	+14	+21	+1	+24.1%	+10.8%	+10.3%	+10.8%	+17.6%	+1.0%
<b>Nurse/ Midwife Manager</b>	<b>1,619</b>	<b>+110</b>	<b>+43</b>	<b>+15</b>	<b>+26</b>	<b>+41</b>	<b>+16</b>	<b>+7.3%</b>	<b>+2.7%</b>	<b>+0.9%</b>	<b>+1.6%</b>	<b>+2.6%</b>	<b>+1.0%</b>
Advanced Nurse/ Midwife Practitioner	14	+10	+11	+10	+9	+5	+1	+256.2%	+360.7%	+245.5%	+176.4%	+53.9%	+8.6%
Clinical Nurse/ Midwife Specialist	81	-17	-9	-3	+2	-2	+5	-17.4%	-10.4%	-3.3%	+2.0%	-2.8%	+6.7%
<b>Nurse/ Midwife Specialist &amp; AN/MP</b>	<b>95</b>	<b>-7</b>	<b>+1</b>	<b>+7</b>	<b>+10</b>	<b>+3</b>	<b>+6</b>	<b>-6.9%</b>	<b>+1.5%</b>	<b>+8.1%</b>	<b>+12.3%</b>	<b>+2.8%</b>	<b>+7.0%</b>
Graduate Nursing/ Midwifery		-11	-13					-100.0%	-100.0%	-100.0%	-100.0%	-100.0%	-100.0%
Staff Midwives		-1	-1	-0	-2			-100.0%	-100.0%	-100.0%	-100.0%	-100.0%	-100.0%
Staff Nurse [Intellectual Disability]	1,585	-172	-196	-141	-119	-101	-13	-9.8%	-11.0%	-8.2%	-7.0%	-6.0%	-0.8%
Staff Nurse [Psychiatric]	60	-89	-50	-30	-16	-16	-28	-59.6%	-45.2%	-33.2%	-20.5%	-21.0%	-31.7%
Staff Nurses [General/ Children's]	3,509	-263	+5	-7	+24	+37	+46	-7.0%	+0.2%	-0.2%	+0.7%	+1.1%	+1.3%
<b>Staff Nurse/ Staff Midwife</b>	<b>5,154</b>	<b>-535</b>	<b>-254</b>	<b>-178</b>	<b>-112</b>	<b>-80</b>	<b>+6</b>	<b>-9.4%</b>	<b>-4.7%</b>	<b>-3.3%</b>	<b>-2.1%</b>	<b>-1.5%</b>	<b>+0.1%</b>
<b>Public Health Nurse</b>	<b>20</b>	<b>-2</b>	<b>-3</b>	<b>-1</b>	<b>-1</b>	<b>-1</b>	<b>-0</b>	<b>-10.2%</b>	<b>-13.8%</b>	<b>-5.6%</b>	<b>-6.2%</b>	<b>-3.4%</b>	<b>-0.6%</b>
Pre-registration Nurse/ Midwife Intern	7	-16	-7	-5	-5	-28	-21	-69.6%	-51.0%	-41.7%	-40.6%	-79.9%	-75.2%
Pre-registration Nurse Intern (COVID-19)	159	+159	+159	+159	+159	+159	+159	-100.0%	-100.0%	-100.0%	-100.0%	-100.0%	-100.0%
Post-registration Nurse/ Midwife Student	5	+4	+5	+5	+5	+5	+4	+400.0%	-100.0%	-100.0%	-100.0%	-100.0%	+400.0%
Nursing/ Midwifery awaiting registration	14	+14	+14	+14	+0	+14	-1	-100.0%	-100.0%	-100.0%	+2.4%	-100.0%	-3.4%
<b>Nursing/ Midwifery Student</b>	<b>185</b>	<b>+161</b>	<b>+171</b>	<b>+173</b>	<b>+159</b>	<b>+150</b>	<b>+141</b>	<b>+669.5%</b>	<b>+1195.4%</b>	<b>+1441.5%</b>	<b>+617.3%</b>	<b>+431.2%</b>	<b>+319.6%</b>
Nursing Education/Clinical	27	+0	+6	+5	+5	+5	+5	+1.1%	+26.3%	+21.6%	+22.4%	+22.0%	+21.9%
Other Nursing/ Midwifery	1	-7	-5	-4	-4			-87.1%	-84.5%	-80.0%	-80.0%		
<b>Nursing/ Midwifery other</b>	<b>28</b>	<b>-6</b>	<b>+0</b>	<b>+1</b>	<b>+1</b>	<b>+5</b>	<b>+5</b>	<b>-18.7%</b>	<b>+0.6%</b>	<b>+2.9%</b>	<b>+3.5%</b>	<b>+21.1%</b>	<b>+21.0%</b>

May 2020 (Oct 2013 figure: 26,374)	WTE May 2020	WTE change since Oct 13	WTE change since Dec 15	WTE change since Dec 16	WTE change since Dec 17	WTE change since Dec 18	WTE change since Dec 19	% change since Oct 13	% change since Dec 15	% change since Dec 16	% change since Dec 17	% change since Dec 18	% change since Dec 19
<b>Overall</b>	<b>31,578</b>	<b>+5,204</b>	<b>+3,256</b>	<b>+2,341</b>	<b>+1,077</b>	<b>+454</b>	<b>+43</b>	<b>+19.7%</b>	<b>+11.5%</b>	<b>+8.0%</b>	<b>+3.5%</b>	<b>+1.5%</b>	<b>+0.1%</b>
<b>Nursing &amp; Midwifery</b>	<b>7,101</b>	<b>-280</b>	<b>-42</b>	<b>+16</b>	<b>+82</b>	<b>+118</b>	<b>+174</b>	<b>-3.8%</b>	<b>-0.6%</b>	<b>+0.2%</b>	<b>+1.2%</b>	<b>+1.7%</b>	<b>+2.5%</b>
Dietitians	38	+12	+16	+9	+9	+7	+3	+43.8%	+71.6%	+31.2%	+29.4%	+22.7%	+9.2%
Occupational Therapists	390	+132	+96	+43	+46	+45	+12	+51.0%	+32.6%	+12.3%	+13.5%	+13.0%	+3.3%
Physiotherapists	323	+60	+37	+22	+17	+14	+10	+22.8%	+12.8%	+7.3%	+5.6%	+4.7%	+3.2%
Podiatrists & Chiropodists	12	-1	+0	-3	-4	-3	+0	-7.4%	+1.1%	-17.4%	-24.3%	-18.2%	+1.5%
Speech & Language Therapists	317	+121	+84	+26	+11	+15	+1	+61.5%	+35.8%	+8.9%	+3.5%	+5.0%	+0.4%
<b>Therapy Professions</b>	<b>1,080</b>	<b>+323</b>	<b>+232</b>	<b>+97</b>	<b>+79</b>	<b>+79</b>	<b>+27</b>	<b>+42.7%</b>	<b>+27.4%</b>	<b>+9.9%</b>	<b>+7.9%</b>	<b>+7.9%</b>	<b>+2.6%</b>
Audiology		-7	-14	-13	-18			-100.0%	-100.0%	-100.0%	-100.0%	-100.0%	-100.0%
Clinical Engineering	12	-6	-6	-6	-6	-0	-1	-33.2%	-34.0%	-34.7%	-33.6%	-0.4%	-8.1%
Clinical Measurement	1	+0	+0	+0	+0	+0	+0	+43.0%	+43.0%	+43.0%	+43.0%	+32.4%	+18.2%
Medical Laboratory	4	+1	+1		+1			+33.3%	+33.3%		+33.3%		
Phlebotomists	1												
Radiographers	6	-4	-3	-3	-3	-1	-1	-42.4%	-32.8%	-31.7%	-32.5%	-16.4%	-20.1%
<b>Health Science/ Diagnostics</b>	<b>24</b>	<b>-15</b>	<b>-21</b>	<b>-21</b>	<b>-25</b>	<b>-1</b>	<b>-2</b>	<b>-38.9%</b>	<b>-47.2%</b>	<b>-46.9%</b>	<b>-51.3%</b>	<b>-3.2%</b>	<b>-8.5%</b>
<b>Social Care</b>	<b>2,587</b>	<b>+823</b>	<b>+644</b>	<b>+393</b>	<b>+238</b>	<b>+96</b>	<b>-11</b>	<b>+46.7%</b>	<b>+33.1%</b>	<b>+17.9%</b>	<b>+10.2%</b>	<b>+3.8%</b>	<b>-0.4%</b>
<b>Social Workers</b>	<b>324</b>	<b>+88</b>	<b>+60</b>	<b>+22</b>	<b>+19</b>	<b>+10</b>	<b>+7</b>	<b>+37.3%</b>	<b>+22.8%</b>	<b>+7.1%</b>	<b>+6.4%</b>	<b>+3.1%</b>	<b>+2.1%</b>
<b>Psychologists</b>	<b>215</b>	<b>+47</b>	<b>+23</b>	<b>+5</b>	<b>-8</b>	<b>+8</b>	<b>+9</b>	<b>+28.1%</b>	<b>+12.0%</b>	<b>+2.3%</b>	<b>-3.8%</b>	<b>+4.0%</b>	<b>+4.4%</b>
<b>Pharmacy</b>	<b>25</b>	<b>+6</b>	<b>+4</b>	<b>+4</b>	<b>+3</b>	<b>+1</b>	<b>+3</b>	<b>+30.9%</b>	<b>+17.1%</b>	<b>+18.8%</b>	<b>+14.6%</b>	<b>+5.4%</b>	<b>+11.5%</b>
Counsellor Therapists	19	+6	+2	+2	-1	+1	-0	+48.3%	+13.4%	+12.1%	-2.9%	+6.3%	-0.2%
HSCP Trainees/ Students		-2	-3	-2	-1			-100.0%	-100.0%	-100.0%	-100.0%	-100.0%	-100.0%
Other Health & Social Care	50	-20	-13	-10	-10	-3	-1	-29.1%	-21.1%	-16.6%	-17.2%	-6.5%	-2.2%
Play Therapists/ Specialists	13	-5	-2	-3	-1	-3	-4	-27.7%	-12.6%	-16.6%	-10.3%	-18.4%	-22.7%
<b>H&amp;SC, Other</b>	<b>81</b>	<b>-21</b>	<b>-16</b>	<b>-13</b>	<b>-13</b>	<b>-5</b>	<b>-5</b>	<b>-20.7%</b>	<b>-16.5%</b>	<b>-13.5%</b>	<b>-13.7%</b>	<b>-6.0%</b>	<b>-5.7%</b>
<b>Health &amp; Social Care Professionals</b>	<b>4,336</b>	<b>+1,251</b>	<b>+926</b>	<b>+487</b>	<b>+293</b>	<b>+187</b>	<b>+27</b>	<b>+40.5%</b>	<b>+27.1%</b>	<b>+12.6%</b>	<b>+7.3%</b>	<b>+4.5%</b>	<b>+0.6%</b>
Executive Management	46	+17	+12	+10	-0	+4	+3	+58.2%	+34.8%	+27.3%	-0.2%	+9.6%	+7.4%
Senior Management (VIII & GM)	217	+88	+50	+39	+39	+24	+5	+68.2%	+30.1%	+21.9%	+22.0%	+12.3%	+2.5%
<b>Management (VIII &amp; above)</b>	<b>263</b>	<b>+105</b>	<b>+62</b>	<b>+49</b>	<b>+39</b>	<b>+28</b>	<b>+8</b>	<b>+66.3%</b>	<b>+30.9%</b>	<b>+22.8%</b>	<b>+17.5%</b>	<b>+11.9%</b>	<b>+3.3%</b>
Middle Management (V-VII)	652	+231	+202	+156	+132	+82	+24	+54.8%	+44.8%	+31.4%	+25.3%	+14.4%	+3.8%
Other Administrative	17	-2	+1	+2	-0		+1	-8.8%	+3.5%	+13.5%	-0.8%		+5.4%
<b>Administrative/ Supervisory (V to VII)</b>	<b>669</b>	<b>+229</b>	<b>+202</b>	<b>+158</b>	<b>+132</b>	<b>+82</b>	<b>+25</b>	<b>+52.1%</b>	<b>+43.4%</b>	<b>+30.9%</b>	<b>+24.5%</b>	<b>+14.0%</b>	<b>+3.8%</b>
<b>Clerical (III &amp; IV)</b>	<b>1,252</b>	<b>+271</b>	<b>+208</b>	<b>+162</b>	<b>+111</b>	<b>+34</b>	<b>+21</b>	<b>+27.6%</b>	<b>+19.9%</b>	<b>+14.8%</b>	<b>+9.7%</b>	<b>+2.8%</b>	<b>+1.7%</b>
<b>Management &amp; Administrative</b>	<b>2,183</b>	<b>+605</b>	<b>+472</b>	<b>+368</b>	<b>+281</b>	<b>+144</b>	<b>+54</b>	<b>+38.3%</b>	<b>+27.6%</b>	<b>+20.3%</b>	<b>+14.8%</b>	<b>+7.1%</b>	<b>+2.5%</b>
Catering	326	-7	-1	+0	+9	+7	+7	-2.1%	-0.3%	+0.0%	+2.8%	+2.1%	+2.2%
Household Services	916	-333	-215	-155	-95	-54	+4	-26.6%	-19.0%	-14.5%	-9.4%	-5.5%	+0.4%
Other Labs & Associated	1		-0	-0		-0			-16.7%	-6.5%		-3.8%	
Other Support	214	-25	-38	-20	-19	-15	-8	-10.5%	-15.2%	-8.6%	-8.1%	-6.6%	-3.7%
Portering	107	-34	-6	-5	-4	+1	-2	-24.0%	-5.2%	-4.6%	-3.4%	+1.2%	-2.3%
<b>Support</b>	<b>1,563</b>	<b>-398</b>	<b>-260</b>	<b>-180</b>	<b>-109</b>	<b>-61</b>	<b>+0</b>	<b>-20.3%</b>	<b>-14.3%</b>	<b>-10.3%</b>	<b>-6.5%</b>	<b>-3.8%</b>	<b>+0.0%</b>



May 2020 (Oct 2013 figure: 26,374)	WTE May 2020	WTE change since Oct 13	WTE change since Dec 15	WTE change since Dec 16	WTE change since Dec 17	WTE change since Dec 18	WTE change since Dec 19	% change since Oct 13	% change since Dec 15	% change since Dec 16	% change since Dec 17	% change since Dec 18	% change since Dec 19
<b>Overall</b>	<b>31,578</b>	<b>+5,204</b>	<b>+3,256</b>	<b>+2,341</b>	<b>+1,077</b>	<b>+454</b>	<b>+43</b>	<b>+19.7%</b>	<b>+11.5%</b>	<b>+8.0%</b>	<b>+3.5%</b>	<b>+1.5%</b>	<b>+0.1%</b>
Maintenance	216	-24	-17	-12	-17	-6	+2	-10.1%	-7.5%	-5.3%	-7.2%	-2.8%	+0.7%
Technical Services	8	+4	+3	+3	+3	+2		+97.6%	+58.8%	+58.8%	+58.8%	+32.8%	
<b>Maintenance/ Technical</b>	<b>224</b>	<b>-20</b>	<b>-14</b>	<b>-9</b>	<b>-14</b>	<b>-4</b>	<b>+2</b>	<b>-8.3%</b>	<b>-6.1%</b>	<b>-3.9%</b>	<b>-5.8%</b>	<b>-1.8%</b>	<b>+0.7%</b>
<b>General Support</b>	<b>1,788</b>	<b>-419</b>	<b>-275</b>	<b>-189</b>	<b>-123</b>	<b>-65</b>	<b>+2</b>	<b>-19.0%</b>	<b>-13.3%</b>	<b>-9.6%</b>	<b>-6.4%</b>	<b>-3.5%</b>	<b>+0.1%</b>
HCA, Nurse's Aide, etc.	10,984	+2,985	+1,828	+1,184	+723	+322	+146	+37.3%	+20.0%	+12.1%	+7.0%	+3.0%	+1.3%
Health & Social Care Assistants	33	+1	-5	-3	-2	-2	+3	+2.3%	-12.5%	-9.1%	-4.7%	-5.0%	+8.2%
<b>Health Care Assistants</b>	<b>11,017</b>	<b>+2,986</b>	<b>+1,824</b>	<b>+1,181</b>	<b>+721</b>	<b>+321</b>	<b>+148</b>	<b>+37.2%</b>	<b>+19.8%</b>	<b>+12.0%</b>	<b>+7.0%</b>	<b>+3.0%</b>	<b>+1.4%</b>
<b>Home Help</b>	<b>3,255</b>	<b>+808</b>	<b>+162</b>	<b>+365</b>	<b>-224</b>	<b>-278</b>	<b>-296</b>	<b>+33.0%</b>	<b>+5.3%</b>	<b>+12.6%</b>	<b>-6.5%</b>	<b>-7.9%</b>	<b>-8.3%</b>
<b>Ambulance Staff</b>		<b>-8</b>						<b>-100.0%</b>	<b>-100.0%</b>	<b>-100.0%</b>	<b>-100.0%</b>	<b>-100.0%</b>	<b>-100.0%</b>
<b>Care, other</b>	<b>1,732</b>	<b>+280</b>	<b>+195</b>	<b>+121</b>	<b>+56</b>	<b>+23</b>	<b>-49</b>	<b>+19.2%</b>	<b>+12.7%</b>	<b>+7.5%</b>	<b>+3.4%</b>	<b>+1.3%</b>	<b>-2.8%</b>
<b>Patient &amp; Client Care</b>	<b>16,005</b>	<b>+4,065</b>	<b>+2,182</b>	<b>+1,666</b>	<b>+553</b>	<b>+66</b>	<b>-197</b>	<b>+34.1%</b>	<b>+15.8%</b>	<b>+11.6%</b>	<b>+3.6%</b>	<b>+0.4%</b>	<b>-1.2%</b>

Source: Health Service Personnel Census