

Social Care Services Employment Report: October 2020

Employment by Staff Group

Oct 2020 (Dec 2019 figure: 31,535)	WTE Sep 2020	WTE Oct 2020	WTE change since Sep 20	% change since Sep 20	WTE change since Dec 19	WTE change since Oct 19
Overall	32,134	32,034	-100	-0.3%	+498	+608
Consultants	29	29	-0	-1.4%	+1	+1
Registrars	18	17	-1	-3.0%	-6	-5
SHO/ Interns	22	23	+1	+5.8%	+1	+1
Medical/ Dental, other	123	114	-9	-7.3%	+3	+16
Medical & Dental	191	183	-9	-4.5%		+13
Nurse/ Midwife Manager	1,647	1,621	-26	-1.6%	+18	+15
Nurse/ Midwife Specialist & AN/MP	98	100	+2	+1.7%	+11	+14
Staff Nurse/ Staff Midwife	5,166	5,152	-14	-0.3%	+3	+45
Public Health Nurse	20	20	-0	-1.6%	+0	+2
<i>Pre-registration Nurse/ Midwife Intern</i>	1	6.99	+6	+832.0%	-21	-15
<i>Pre-registration Nurse Intern (COVID-19)</i>	95	46.52	-48	-50.9%	+47	+47
<i>Post-registration Nurse/ Midwife Student</i>	3	1.85	-1	-30.2%	+1	+1
<i>Nursing/ Midwifery awaiting registration</i>	15	14.25	-1	-5.6%	-1	+6
Nursing/ Midwifery Student	113	70	-44	-38.6%	+26	+38
Nursing/ Midwifery other	27	48	+21	+76.8%	+25	+25
Nursing & Midwifery	7,072	7,010	-62	-0.9%	+83	+139
Therapy Professions	1,084	1,085	+1	+0.1%	+32	+35
Health Science/ Diagnostics	25	25	-0	-0.6%	-1	-0
Social Care	2,704	2,721	+16	+0.6%	+123	+162
Social Workers	318	322	+4	+1.2%	+5	+0
Psychologists	222	229	+7	+3.1%	+22	+25
Pharmacy	25	25	-0	-0.3%	+3	+3
H&SC, Other	84	82	-2	-2.0%	-4	-3
Health & Social Care Professionals	4,462	4,488	+26	+0.6%	+180	+221
Management (VIII & above)	275	279	+4	+1.4%	+25	+22
Administrative/ Supervisory (V to VII)	675	683	+7	+1.1%	+39	+46
Clerical (III & IV)	1,236	1,255	+18	+1.5%	+23	+33
Management & Administrative	2,187	2,216	+29	+1.3%	+87	+101
Support	1,468	1,468	-0	-0.0%	-96	-111
Maintenance/ Technical	225	224	-1	-0.4%	+2	+0
General Support	1,693	1,692	-1	-0.1%	-94	-111
Health Care Assistants	11,342	11,171	-171	-1.5%	+301	+279
Home Help	3,404	3,460	+57	+1.7%	-90	-115
Care, other	1,783	1,814	+31	+1.7%	+32	+80
Patient & Client Care	16,529	16,445	-84	-0.5%	+243	+244

Social Care Services Employment by Administration (HSE / S38): October 2020

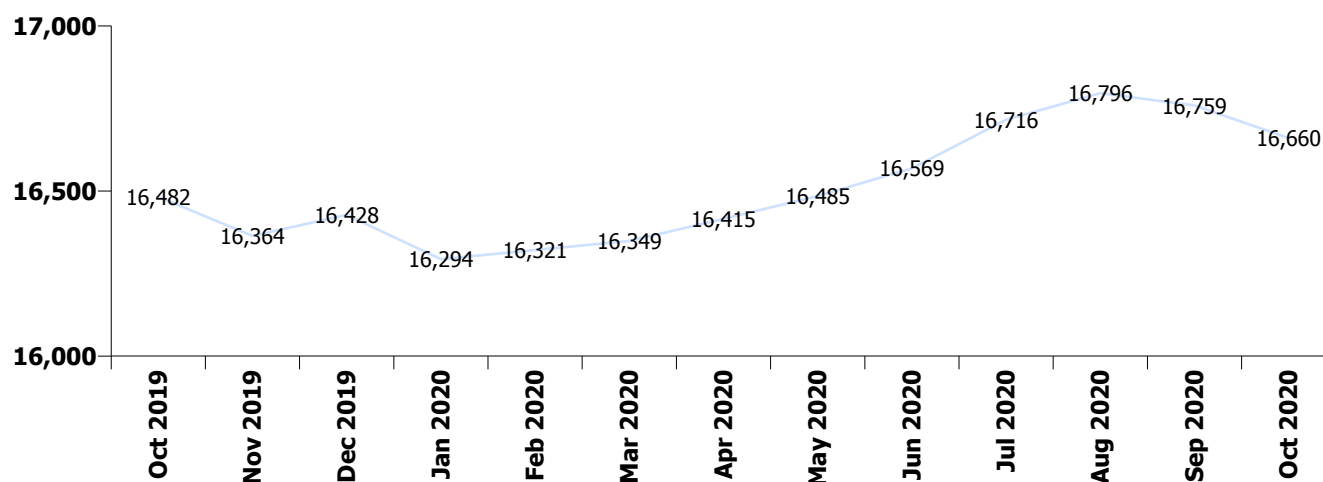
Oct 2020 (Dec 2019 figure: 31,535)	WTE Sep 2020	WTE Oct 2020	WTE change since Sep 20	% change since Sep 20	WTE change since Dec 19	WTE change since Oct 19
Overall	32,134	32,034	-100	-0.3%	+498	+608
HSE	16,759	16,660	-99	-0.6%	+233	+178
Section 38	15,375	15,373	-1	-0.0%	+266	+429

HSE

Oct 2020 (Dec 2019 figure: 16,428)	WTE Sep 2020	WTE Oct 2020	WTE change since Sep 20	% change since Sep 20	WTE change since Dec 19	WTE change since Oct 19
Overall	16,759	16,660	-99	-0.6%	+233	+178
Consultants	12	11.47	-1	-4.4%	+1	+1
Registrars	8	7.51			-2	-2
SHO/ Interns	11	12.00	+1	+9.5%	+2	+2
Medical/ Dental, other	113	103.88	-9	-8.0%	+3	+16
Medical & Dental	143	135	-9	-5.9%	+4	+17
Nurse/ Midwife Manager	962	959.29	-3	-0.3%	+46	+45
Nurse/ Midwife Specialist & AN/MP	50	53.07	+3	+7.0%	+13	+15
Staff Nurse/ Staff Midwife	3,217	3,199.49	-18	-0.5%	+8	+11
Public Health Nurse	20	19.73	-0	-1.6%	+0	+2
<i>Pre-registration Nurse/ Midwife Intern</i>	1	5.99	+5	+698.7%	+3	-8
<i>Pre-registration Nurse Intern (COVID-19)</i>	41	24.89	-16	-39.7%	+25	+25
<i>Post-registration Nurse/ Midwife Student</i>				-100.0%	-1	-1
<i>Nursing/ Midwifery awaiting registration</i>	15	14.25	-1	-5.6%	-1	+6
Nursing/ Midwifery Student	57	45.13	-12	-21.0%	+26	+23
Nursing/ Midwifery other	11	10.73	-0	-1.4%	+2	+2
Nursing & Midwifery	4,317	4,287	-30	-0.7%	+94	+98
Therapy Professions	584	600.92	+17	+2.8%	+39	+36
Health Science/ Diagnostics	8	8.16	-0	-1.7%	+1	+2
Social Care	95	95.55	+1	+1.1%	+4	+4
Social Workers	148	149.99	+2	+1.2%	+8	+2
Psychologists	78	85.16	+7	+8.7%	+7	+6
Pharmacy	13	12.71	-0	-1.9%	+2	+2
H&SC, Other	27	25.97	-1	-2.9%	-2	-2
Health & Social Care Professionals	953	978	+25	+2.6%	+59	+50
Management (VIII & above)	131	134.06	+3	+2.5%	+17	+18
Administrative/ Supervisory (V to VII)	303	309.46	+7	+2.2%	+23	+32
Clerical (III & IV)	723	737.75	+14	+2.0%	+16	+27
Management & Administrative	1,157	1,181	+24	+2.1%	+55	+78
Support	773	776.23	+3	+0.4%	-39	-47
Maintenance/ Technical	110	109.60	-0	-0.1%	+0	-2
General Support	883	886	+3	+0.4%	-39	-48
Health Care Assistants	5,626	5,451.92	-174	-3.1%	+114	+65
Home Help	3,404	3,460.29	+57	+1.7%	-90	-115
Care, other	276	280.24	+4	+1.4%	+35	+36
Patient & Client Care	9,305	9,192	-113	-1.2%	+58	-15

Section 38

Oct 2020 (Dec 2019 figure: 15,107)	WTE Sep 2020	WTE Oct 2020	WTE change since Sep 20	% change since Sep 20	WTE change since Dec 19	WTE change since Oct 19
Overall	15,375	15,373	-1	-0.0%	+266	+429
Consultants	17	17.10	+0	+0.6%	+0	+0
Registrars	10	9.49	-1	-5.2%	-4	-3
SHO/ Interns	11	11.24	+0	+2.2%	-1	-1
Medical/ Dental, other	10	10.09				
Medical & Dental	48	48	-0	-0.4%	-4	-4
Nurse/ Midwife Manager	684	661.28	-23	-3.4%	-28	-30
Nurse/ Midwife Specialist & AN/MP	48	46.66	-2	-3.7%	-2	-1
Staff Nurse/ Staff Midwife	1,949	1,952.55	+3	+0.2%	-4	+34
Pre-registration Nurse/ Midwife Intern		1.00	+1	-100.0%	-24	-8
Pre-registration Nurse Intern (COVID-19)	54	21.63	-32	-59.6%	+22	+22
Post-registration Nurse/ Midwife Student	3	1.85	-1	-30.2%	+2	+2
Nursing/ Midwifery awaiting registration				-100.0%		-1
Nursing/ Midwifery Student	56	24.48	-32	-56.4%	-1	+15
Nursing/ Midwifery other	16	37.25	+21	+129.1%	+23	+23
Nursing & Midwifery	2,754	2,722	-32	-1.2%	-12	+42
Therapy Professions	500	483.85	-16	-3.2%	-7	-1
Health Science/ Diagnostics	17	17.00			-2	-2
Social Care	2,610	2,625.08	+15	+0.6%	+119	+158
Social Workers	170	171.78	+2	+1.3%	-3	-2
Psychologists	143	143.57	+0	+0.1%	+15	+19
Pharmacy	12	12.24	+0	+1.3%	+1	+1
H&SC, Other	57	56.08	-1	-1.5%	-3	-1
Health & Social Care Professionals	3,509	3,510	+1	+0.0%	+120	+172
Management (VIII & above)	144	144.95	+1	+0.4%	+8	+5
Administrative/ Supervisory (V to VII)	373	373.10	+1	+0.1%	+16	+13
Clerical (III & IV)	513	516.82	+4	+0.8%	+8	+6
Management & Administrative	1,030	1,035	+5	+0.5%	+32	+24
General Support	811	806	-4	-0.5%	-55	-62
Patient & Client Care	7,223	7,252	+29	+0.4%	+185	+259



Social Care Services Employment by Care Group & Administration (HSE / S38): October 2020

Social Care

Oct 2020 (Dec 2019 figure: 31,535)	WTE Sep 2020	WTE Oct 2020	WTE change since Sep 20	% change since Sep 20	WTE change since Dec 19	WTE change since Oct 19
Overall	32,134	32,034	-100	-0.3%	+498	+608
HSE	4,001	4,062	+61	+1.5%	+159	+192
Section 38	14,623	14,629	+6	+0.0%	+230	+396
Disabilities	18,624	18,691	+67	+0.4%	+388	+588
HSE	12,758	12,599	-159	-1.2%	+74	-13
Section 38	751	744	-8	-1.0%	+36	+33
Older People	13,509	13,342	-167	-1.2%	+110	+20

Disabilities

Oct 2020 (Dec 2019 figure: 18,303)	WTE Sep 2020	WTE Oct 2020	WTE change since Sep 20	% change since Sep 20	WTE change since Dec 19	WTE change since Oct 19
Overall	18,624	18,691	+67	+0.4%	+388	+588
Consultants	23	24	+1	+2.6%	+0	+0
Registrars	8	7	-1	-6.5%	-6	-5
SHO/ Interns	8	9	+1	+15.5%	+2	+2
Medical/ Dental, other	16	15	-1	-6.2%	+1	+1
Medical & Dental	55	56	+0	+0.6%	-2	-2
Nurse/ Midwife Manager	898	873	-25	-2.8%	-21	-13
Nurse/ Midwife Specialist & AN/MP	64	62	-2	-2.9%	+0	+1
Staff Nurse/ Staff Midwife	2,525	2,532	+7	+0.3%	-40	-1
Public Health Nurse	7	6	-1	-13.6%	-0	+1
Pre-registration Nurse/ Midwife Intern	1	7	+6	+832.0%	-28	-15
Pre-registration Nurse Intern (COVID-19)	95	47	-48	-50.9%	+47	+47
Post-registration Nurse/ Midwife Student	3	2	-1	-30.2%	+2	+2
Nursing/ Midwifery awaiting registration	13	13	+0	+1.2%	+13	+4
Nursing/ Midwifery Student	111	68	-43	-38.5%	+26	+38
Nursing/ Midwifery other	24	45	+21	+86.3%	+23	+23
Nursing & Midwifery	3,629	3,586	-43	-1.2%	-12	+49
Therapy Professions	785	785	+0	+0.0%	+21	+25
Health Science/ Diagnostics	20	20			-0	-0
Social Care	2,702	2,718	+16	+0.6%	+123	+162
Social Workers	218	223	+5	+2.4%	+4	+4
Psychologists	220	227	+8	+3.5%	+23	+26
Pharmacy	7	7	+0	+1.8%	+0	-0
H&SC, Other	82	81	-2	-2.2%	-4	-3
Health & Social Care Professionals	4,033	4,061	+28	+0.7%	+167	+213
Management (VIII & above)	198	200	+2	+1.1%	+20	+15
Administrative/ Supervisory (V to VII)	505	514	+8	+1.7%	+35	+38
Clerical (III & IV)	675	679	+4	+0.6%	+19	+28
Management & Administrative	1,378	1,393	+15	+1.1%	+74	+81
Support	667	669	+1	+0.2%	-65	-72
Maintenance/ Technical	130	129	-1	-0.9%	+4	+4
General Support	797	797	+0	+0.0%	-61	-68
Health Care Assistants	7,011	7,028	+17	+0.2%	+202	+244
Home Help	96	105	+10	+10.0%	-3	-2
Care, other	1,624	1,664	+40	+2.5%	+25	+74
Patient & Client Care	8,731	8,798	+66	+0.8%	+223	+315

Older People

Oct 2020 (Dec 2019 figure: 13,233)	WTE Sep 2020	WTE Oct 2020	WTE change since Sep 20	% change since Sep 20	WTE change since Dec 19	WTE change since Oct 19
Overall	13,509	13,342	-167	-1.2%	+110	+20
Consultants	6	5	-1	-18.2%	+1	+1
Registrars	10	10				
SHO/ Interns	14	14	+0	+0.3%	-1	-1
Medical/ Dental, other	107	99	-8	-7.5%	+2	+15
Medical & Dental	136	127	-9	-6.6%	+2	+15
Nurse/ Midwife Manager	749	748	-1	-0.2%	+38	+28
Nurse/ Midwife Specialist & AN/MP	34	38	+4	+10.3%	+11	+13
Staff Nurse/ Staff Midwife	2,641	2,620	-21	-0.8%	+44	+45
Public Health Nurse	13	14	+1	+4.9%	+0	+1
<i>Post-registration Nurse/ Midwife Student</i>				-100.0%		-1
<i>Nursing/ Midwifery awaiting registration</i>	2	2	-1	-39.8%	+2	+2
Nursing/ Midwifery Student	2	2	-1	-39.8%	-1	+1
Nursing/ Midwifery other	3	3			+2	+2
Nursing & Midwifery	3,442	3,423	-19	-0.5%	+95	+91
Therapy Professions	299	300	+0	+0.1%	+11	+10
Health Science/ Diagnostics	5	5	-0	-2.6%	-1	-0
Social Care	3	3	-0	-3.9%	-0	-0
Social Workers	100	99	-1	-1.3%	+0	-4
Psychologists	2	1	-1	-30.3%	-1	-1
Pharmacy	18	18	-0	-1.1%	+3	+3
H&SC, Other	1	2	+0	+10.3%	+0	+0
Health & Social Care Professionals	429	427	-2	-0.4%	+13	+8
Management (VIII & above)	78	79	+2	+2.0%	+5	+8
Administrative/ Supervisory (V to VII)	170	169	-1	-0.6%	+4	+7
Clerical (III & IV)	561	575	+14	+2.5%	+4	+5
Management & Administrative	809	823	+15	+1.8%	+12	+20
Support	800	799	-2	-0.2%	-30	-39
Maintenance/ Technical	96	96	+0	+0.2%	-3	-3
General Support	896	895	-1	-0.2%	-33	-42
Health Care Assistants	4,330	4,142	-188	-4.3%	+99	+35
Home Help	3,308	3,355	+47	+1.4%	-87	-113
Care, other	159	150	-9	-5.9%	+8	+6
Patient & Client Care	7,797	7,647	-150	-1.9%	+20	-72

Social Care Services Employment by CHO etc. Oct 2020

CHO 1

Oct 2020 (Dec 2019 figure: 3,334)	WTE Sep 2020	WTE Oct 2020	WTE change since Sep 20	% change since Sep 20	WTE change since Dec 19	WTE change since Oct 19
Overall	3,436	3,407	-29	-0.9%	+73	+30
Consultants				-100.0%		
Medical/ Dental, other	20	20	+0	+0.0%	-12	+1
Medical & Dental	20	20			-12	+1
Nurse/ Midwife Manager	199	200	+1	+0.7%	+4	+9
Nurse/ Midwife Specialist & AN/MP	18	19	+0	+2.0%	+5	+6
Staff Nurse/ Staff Midwife	636	637	+1	+0.1%	+6	-6
<i>Pre-registration Nurse/ Midwife Intern</i>				-100.0%	-11	-14
<i>Pre-registration Nurse Intern (COVID-19)</i>	26	20	-6	-21.5%	+20	+20
<i>Nursing/ Midwifery awaiting registration</i>	11	11			+11	+11
Nursing/ Midwifery Student	37	31	-6	-15.0%	+17	+17
Nursing/ Midwifery other	6	6	-0	-2.6%	+1	+1
Nursing & Midwifery	895	892	-3	-0.3%	+33	+27
Therapy Professions	52	58	+5	+10.5%	+4	+5
Health Science/ Diagnostics	1	2	+0	+6.1%	+0	+0
Social Care	9	9	-0	-1.0%	+1	+1
Social Workers	34	33	-1	-3.2%	-0	+1
Psychologists	10	11	+1	+12.0%	+6	+6
H&SC, Other	9	9	-0	-1.6%	-3	-3
Health & Social Care Professionals	116	121	+5	+4.7%	+9	+10
Management (VIII & above)	22	24	+2	+6.8%	+2	+1
Administrative/ Supervisory (V to VII)	48	49	+0	+0.7%	+7	+7
Clerical (III & IV)	134	137	+3	+2.4%	+3	+4
Management & Administrative	205	210	+5	+2.4%	+11	+13
Support	166	166	+0	+0.1%	-5	-4
Maintenance/ Technical	12	13	+1	+4.3%	-0	-2
General Support	179	179	+1	+0.4%	-5	-6
Health Care Assistants	1,395	1,355	-40	-2.9%	+30	+22
Home Help	558	560	+2	+0.4%	+4	-43
Care, other	68	69	+1	+1.4%	+4	+7
Patient & Client Care	2,021	1,984	-37	-1.9%	+38	-14

CHO 2

Oct 2020 (Dec 2019 figure: 3,103)	WTE Sep 2020	WTE Oct 2020	WTE change since Sep 20	% change since Sep 20	WTE change since Dec 19	WTE change since Oct 19
Overall	3,088	3,069	-18	-0.6%	-33	+25
Consultants	3	3				
Registrars	2	2				
Medical/ Dental, other	12	12			-1	-0
Medical & Dental	17	17			-1	-0
Nurse/ Midwife Manager	145	144	-1	-0.4%	+9	+10
Nurse/ Midwife Specialist & AN/MP	8	8	-0	-1.3%	-0	-0
Staff Nurse/ Staff Midwife	474	470	-3	-0.6%	+4	+2
Public Health Nurse	1	1			+0	+0
<i>Pre-registration Nurse Intern (COVID-19)</i>	<i>1</i>	<i>0</i>	<i>-1</i>	<i>-72.9%</i>	<i>+0</i>	<i>+0</i>
Nursing/ Midwifery Student	1	0	-1	-72.9%	+0	+0
Nursing & Midwifery	628	624	-4	-0.7%	+13	+13
Therapy Professions	63	61	-2	-2.6%	-6	-5
Health Science/ Diagnostics	1	1				-0
Social Care	242	237	-5	-1.9%	+15	+9
Social Workers	35	36	+1	+3.2%	-0	+1
Psychologists	15	14	-1	-4.5%	-1	-2
Pharmacy	1	1	+0	+1.0%	+0	
H&SC, Other	14	14			-2	-1
Health & Social Care Professionals	371	365	-6	-1.5%	+6	+3
Management (VIII & above)	19	20	+1	+5.6%	+2	+2
Administrative/ Supervisory (V to VII)	51	53	+2	+3.1%	+5	+4
Clerical (III & IV)	114	116	+2	+2.0%	-5	-5
Management & Administrative	184	189	+5	+2.7%	+2	+1
Support	99	99	+0	+0.4%	-1	-5
Maintenance/ Technical	32	33	+0	+0.3%	+1	+0
General Support	131	132	+0	+0.4%	-1	-5
Health Care Assistants	1,183	1,158	-25	-2.1%	+20	+22
Home Help	418	426	+8	+1.8%	-73	-15
Care, other	155	159	+3	+2.2%	+0	+7
Patient & Client Care	1,757	1,743	-14	-0.8%	-53	+13

CHO 3

Oct 2020 (Dec 2019 figure: 2,798)	WTE Sep 2020	WTE Oct 2020	WTE change since Sep 20	% change since Sep 20	WTE change since Dec 19	WTE change since Oct 19
Overall	2,930	2,930	-0	-0.0%	+132	+165
Consultants	2	3	+0	+4.6%	+1	+1
Medical/ Dental, other	5	7	+1	+27.4%	+1	+1
Medical & Dental	8	9	+2	+20.2%	+1	+2
Nurse/ Midwife Manager	141	142	+1	+0.4%	+2	+5
Nurse/ Midwife Specialist & AN/MP	14	14	+0	+0.1%	-1	+2
Staff Nurse/ Staff Midwife	484	490	+6	+1.2%	+4	+5
Public Health Nurse	1	1			+1	
Public Health Nurse	1	1				
Pre-registration Nurse/ Midwife Intern				-100.0%	-7	
Pre-registration Nurse Intern (COVID-19)	2	3	+1	+35.1%	+3	+3
Nursing/ Midwifery Student	2	3	+1	+35.1%	-9	+3
Nursing/ Midwifery other	4	4				
Nursing & Midwifery	646	653	+7	+1.1%	-4	+14
Therapy Professions	108	109	+1	+1.1%	+7	+7
Health Science/ Diagnostics	3	3	-0	-7.8%	+2	+2
Social Care	267	269	+2	+0.7%	+28	+26
Social Workers	21	21	+0	+1.4%	-3	-3
Psychologists	20	20	-0	-1.1%	+4	+4
Pharmacy	1	1				
H&SC, Other	12	11	-1	-8.7%	-1	
Health & Social Care Professionals	432	434	+2	+0.4%	+38	+36
Management (VIII & above)	14	14	-0	-0.7%	+1	+2
Administrative/ Supervisory (V to VII)	63	64	+1	+1.6%	+3	+7
Clerical (III & IV)	110	107	-2	-2.1%	-1	+1
Management & Administrative	186	185	-1	-0.7%	+3	+10
Support	117	118	+1	+0.8%	+1	+0
Maintenance/ Technical	39	39	-0	-0.4%	+2	+2
General Support	156	157	+1	+0.5%	+3	+3
Health Care Assistants	1,103	1,090	-13	-1.2%	+46	+47
Home Help	214	213	-1	-0.6%	+38	+46
Care, other	185	189	+4	+2.2%	+6	+8
Patient & Client Care	1,502	1,492	-10	-0.7%	+90	+101

CHO 4

Oct 2020 (Dec 2019 figure: 5,358)	WTE Sep 2020	WTE Oct 2020	WTE change since Sep 20	% change since Sep 20	WTE change since Dec 19	WTE change since Oct 19
Overall	5,462	5,469	+8	+0.1%	+112	+75
Consultants	4	3	-1	-13.3%	+1	+1
Registrars	3	3				
SHO/ Interns	1	1				
Medical/ Dental, other	36	30	-6	-15.8%	+9	+9
Medical & Dental	44	37	-6	-14.1%	+10	+10
Nurse/ Midwife Manager	218	212	-6	-2.7%	+6	-4
Nurse/ Midwife Specialist & AN/MP	20	21	+1	+5.6%	+4	+4
Staff Nurse/ Staff Midwife	825	812	-13	-1.6%	-12	-1
Public Health Nurse	6	6	+0	+2.4%	+1	+2
<i>Pre-registration Nurse/ Midwife Intern</i>				-100.0%	-8	-9
<i>Pre-registration Nurse Intern (COVID-19)</i>	19	17	-2	-10.5%	+17	+17
<i>Post-registration Nurse/ Midwife Student</i>				-100.0%		-1
<i>Nursing/ Midwifery awaiting registration</i>	2	2	+0	+9.4%	+2	+2
Nursing/ Midwifery Student	21	19	-2	-9.0%	+10	+9
Nursing/ Midwifery other	1		-1	-100.0%	-1	-1
Nursing & Midwifery	1,090	1,069	-20	-1.9%	+7	+10
Therapy Professions	155	149	-6	-4.1%	-4	-4
Health Science/ Diagnostics	1	1			+0	+1
Social Care	231	241	+10	+4.4%	+13	+14
Social Workers	38	38	-0	-0.9%	+0	+0
Psychologists	36	36	+0	+0.5%	+1	+3
Pharmacy	5	4	-1	-15.5%	+1	+1
H&SC, Other	11	10	-1	-6.7%	+2	+2
Health & Social Care Professionals	476	478	+2	+0.5%	+13	+17
Management (VIII & above)	36	37	+1	+3.0%	+2	+2
Administrative/ Supervisory (V to VII)	76	75	-1	-1.7%	+4	+4
Clerical (III & IV)	208	219	+12	+5.7%	+7	+8
Management & Administrative	320	331	+12	+3.6%	+13	+15
Support	252	252	+1	+0.4%	+11	+16
Maintenance/ Technical	17	17	-0	-0.5%	+1	+1
General Support	269	270	+1	+0.3%	+12	+17
Health Care Assistants	1,847	1,845	-1	-0.1%	+69	+47
Home Help	1,057	1,078	+21	+2.0%	-36	-73
Care, other	361	360	-0	-0.0%	+22	+33
Patient & Client Care	3,264	3,284	+19	+0.6%	+56	+7

CHO 5

Oct 2020 (Dec 2019 figure: 3,152)	WTE Sep 2020	WTE Oct 2020	WTE change since Sep 20	% change since Sep 20	WTE change since Dec 19	WTE change since Oct 19
Overall	3,192	3,210	+18	+0.6%	+58	+54
Consultants	1	1			-0	-0
Medical/ Dental, other	21	16	-5	-22.8%	+6	+6
Medical & Dental	22	17	-5	-22.0%	+6	+6
Nurse/ Midwife Manager	156	156	-1	-0.5%	+8	+3
Nurse/ Midwife Specialist & AN/MP	4	6	+2	+53.7%	+2	+2
Staff Nurse/ Staff Midwife	481	475	-6	-1.3%	-10	+1
Public Health Nurse	9	8	-1	-10.9%	-1	-1
<i>Pre-registration Nurse Intern (COVID-19)</i>	6	5	-1	-17.1%	+5	+5
<i>Post-registration Nurse/ Midwife Student</i>	3	2	-1	-30.2%	+2	+2
<i>Nursing/ Midwifery awaiting registration</i>				-100.0%		-4
Nursing/ Midwifery Student	9	7	-2	-21.1%	+5	+3
Nursing & Midwifery	659	651	-8	-1.2%	+4	+8
Therapy Professions	87	94	+7	+7.9%	-10	-8
Social Care	148	143	-5	-3.4%	-11	-7
Social Workers	26	28	+1	+4.4%	+3	+1
Psychologists	13	19	+6	+47.2%	+5	+5
<i>Pharmacy</i>	1	1	-0	-4.7%	+1	+1
Pharmacy	1	1	-0	-4.7%	+1	+1
H&SC, Other	7	7	-0	-0.7%	-0	-0
Health & Social Care Professionals	282	291	+9	+3.2%	-11	-8
Management (VIII & above)	15	16	+0	+0.9%	+1	+1
Administrative/ Supervisory (V to VII)	53	57	+4	+6.7%	+4	+5
Clerical (III & IV)	90	93	+3	+3.7%	+0	-2
Management & Administrative	158	165	+7	+4.4%	+5	+4
Support	96	96	+0	+0.3%	-43	-46
Maintenance/ Technical	12	12	-0	-2.7%	-3	-3
General Support	108	108	-0	-0.1%	-46	-49
Health Care Assistants	1,190	1,166	-24	-2.0%	+105	+106
Home Help	624	654	+29	+4.7%	-8	-18
Care, other	149	158	+9	+6.0%	+4	+6
Patient & Client Care	1,963	1,978	+15	+0.8%	+100	+94

CHO 6

Oct 2020 (Dec 2019 figure: 2,021)	WTE Sep 2020	WTE Oct 2020	WTE change since Sep 20	% change since Sep 20	WTE change since Dec 19	WTE change since Oct 19
Overall	2,009	2,014	+6	+0.3%	-7	+18
Consultants	3	3				
Registrars	1	1				
Medical/ Dental, other	5	5				
Medical & Dental	9	9				
Nurse/ Midwife Manager	108	108	-0	-0.2%	-4	-2
Nurse/ Midwife Specialist & AN/MP	1	1				
Staff Nurse/ Staff Midwife	346	345	-1	-0.4%	-6	+2
Nursing & Midwifery	455	454	-2	-0.3%	-10	+0
Therapy Professions	85	88	+3	+3.5%	-4	-5
Social Care	342	350	+9	+2.5%	+16	+26
Social Workers	18	19	+1	+4.5%	-3	-4
Psychologists	18	16	-2	-12.5%	+0	-1
Pharmacy	3	3	+0	+1.4%	+0	-0
H&SC, Other	1	1	+0	+31.1%	-0	-0
Health & Social Care Professionals	467	478	+10	+2.2%	+9	+16
Management (VIII & above)	36	37	+0	+1.1%	+2	+1
Administrative/ Supervisory (V to VII)	75	73	-1	-1.6%	-2	-2
Clerical (III & IV)	91	91	+0	+0.2%	+8	+7
Management & Administrative	202	201	-1	-0.3%	+8	+6
Support	133	129	-4	-3.0%	-1	-10
Maintenance/ Technical	15	14	-1	-6.7%	-1	+0
General Support	148	143	-5	-3.3%	-2	-10
Health Care Assistants	486	485	-1	-0.2%	-2	+7
Care, other	241	245	+4	+1.5%	-9	-1
Patient & Client Care	727	730	+3	+0.3%	-11	+6

CHO 7

Oct 2020 (Dec 2019 figure: 3,978)	WTE Sep 2020	WTE Oct 2020	WTE change since Sep 20	% change since Sep 20	WTE change since Dec 19	WTE change since Oct 19
Overall	4,105	4,054	-52	-1.3%	+76	+121
Consultants	1	1				
Registrars	3	2	-1	-17.3%	-1	-0
SHO/ Interns	9	9	+0	+2.7%	+0	+0
Medical/ Dental, other	5	5				-1
Medical & Dental	18	17	-0	-1.6%	-0	-1
Nurse/ Midwife Manager	207	200	-7	-3.2%	+1	+3
Nurse/ Midwife Specialist & AN/MP	9	8	-0	-4.1%	+0	+0
Staff Nurse/ Staff Midwife	620	615	-5	-0.8%	+22	+29
<i>Pre-registration Nurse Intern (COVID-19)</i>	<i>11</i>		<i>-11</i>	<i>-100.0%</i>		
<i>Nursing/ Midwifery awaiting registration</i>	<i>2</i>	<i>2</i>	<i>-1</i>	<i>-39.8%</i>	<i>+2</i>	<i>+2</i>
Nursing/ Midwifery Student	13	2	-12	-88.9%	+2	+2
Nursing/ Midwifery other	2	2			+1	+1
Nursing & Midwifery	851	827	-24	-2.8%	+26	+35
Therapy Professions	159	147	-11	-7.1%	+12	+13
Health Science/ Diagnostics	3	3				
Social Care	369	373	+4	+1.1%	+13	+19
Social Workers	47	47	-1	-1.6%	+2	+1
Psychologists	30	31	+1	+2.1%	+3	+3
Pharmacy	8	8	+0	+1.6%	+1	-0
H&SC, Other	3	3				
Health & Social Care Professionals	619	611	-7	-1.1%	+31	+36
Management (VIII & above)	44	45	+2	+3.6%	+9	+9
Administrative/ Supervisory (V to VII)	99	98	-1	-0.7%	+8	+5
Clerical (III & IV)	133	135	+2	+1.6%	+9	+13
Management & Administrative	276	279	+3	+1.1%	+25	+26
Support	270	268	-2	-0.6%	-9	-13
Maintenance/ Technical	34	34	-0	-0.2%	+4	+4
General Support	304	302	-2	-0.5%	-5	-9
Health Care Assistants	1,517	1,492	-26	-1.7%	-9	+6
Home Help	132	132	+1	+0.5%	+5	+13
Care, other	390	393	+4	+0.9%	+3	+14
Patient & Client Care	2,039	2,017	-22	-1.1%	-1	+33

CHO 8

Oct 2020 (Dec 2019 figure: 3,650)	WTE Sep 2020	WTE Oct 2020	WTE change since Sep 20	% change since Sep 20	WTE change since Dec 19	WTE change since Oct 19
Overall	3,676	3,648	-29	-0.8%	-3	+9
Consultants	1	1				
Registrars	1	1			-1	-1
Medical/ Dental, other	12	12	-0	-0.5%	+0	-0
Medical & Dental	14	14	-0	-0.4%	-1	-1
Nurse/ Midwife Manager	204	186	-18	-8.8%	-14	-14
Nurse/ Midwife Specialist & AN/MP	10	7	-3	-25.8%	-2	-1
Staff Nurse/ Staff Midwife	559	566	+6	+1.1%	-2	+11
Public Health Nurse	3	4	+1	+15.1%	+1	+1
Pre-registration Nurse/ Midwife Intern		1	+1	-100.0%	+1	+1
Pre-registration Nurse Intern (COVID-19)	18	1	-17	-95.0%	+1	+1
Nursing/ Midwifery awaiting registration				-100.0%		-1
Nursing/ Midwifery Student	18	2	-16	-89.5%	+2	+1
Nursing/ Midwifery other	6	28	+22	+346.8%	+22	+22
Nursing & Midwifery	801	793	-8	-1.0%	+7	+20
Therapy Professions	112	117	+5	+4.4%	+5	+6
Health Science/ Diagnostics	2	2				
Social Care	374	374	-0	-0.0%	+14	+20
Social Workers	30	31	+1	+3.6%	+1	+1
Psychologists	20	22	+2	+8.3%	-3	-3
Pharmacy	2	2	+1	+33.3%	-1	-0
H&SC, Other	7	7	+0	+2.1%	-0	+0
Health & Social Care Professionals	547	555	+8	+1.5%	+16	+24
Management (VIII & above)	21	20	-1	-4.6%	+6	+6
Administrative/ Supervisory (V to VII)	75	77	+2	+2.1%	+0	+4
Clerical (III & IV)	159	156	-2	-1.3%	+2	+1
Management & Administrative	255	254	-1	-0.6%	+9	+11
Support	69	68	-1	-1.7%	-4	-3
Maintenance/ Technical	38	38	+0	+0.2%	-1	-1
General Support	108	106	-1	-1.0%	-6	-4
Health Care Assistants	1,420	1,394	-26	-1.8%	-6	-15
Home Help	400	397	-3	-0.7%	-21	-24
Care, other	132	135	+3	+2.2%	-1	-1
Patient & Client Care	1,951	1,925	-26	-1.3%	-28	-40

CHO 9

Oct 2020 (Dec 2019 figure: 4,064)	WTE Sep 2020	WTE Oct 2020	WTE change since Sep 20	% change since Sep 20	WTE change since Dec 19	WTE change since Oct 19
Overall	4,164	4,161	-2	-0.1%	+98	+116
Consultants	14	14	-0	-0.0%	-0	-0
Registrars	8	8			-4	-4
SHO/ Interns	12	13	+1	+8.7%	+1	+1
Medical/ Dental, other	7	7				
Medical & Dental	41	42	+1	+2.6%	-3	-3
Nurse/ Midwife Manager	268	272	+4	+1.4%	+6	+4
Nurse/ Midwife Specialist & AN/MP	15	17	+1	+7.7%	+3	+3
Staff Nurse/ Staff Midwife	741	743	+2	+0.2%	-1	+2
Public Health Nurse				-100.0%	-0	-0
Pre-registration Nurse/ Midwife Intern	1	6	+5	+698.7%	-3	+6
Pre-registration Nurse Intern (COVID-19)	12	1	-12	-93.6%	+1	+1
Nursing/ Midwifery awaiting registration				-100.0%		-4
Nursing/ Midwifery Student	13	7	-6	-48.4%	-1	+3
Nursing/ Midwifery other	9	9			+1	+1
Nursing & Midwifery	1,047	1,048	+0	+0.0%	+7	+13
Therapy Professions	263	262	-2	-0.6%	+26	+26
Health Science/ Diagnostics	14	14			-2	-3
Social Care	722	723	+2	+0.2%	+34	+53
Social Workers	68	69	+2	+2.4%	+4	+3
Psychologists	60	61	+1	+0.8%	+8	+8
Pharmacy	6	6			+1	+1
H&SC, Other	20	20	-0	-0.6%	+0	+0
Health & Social Care Professionals	1,152	1,154	+2	+0.2%	+70	+88
Management (VIII & above)	49	48	-1	-2.0%	+1	
Administrative/ Supervisory (V to VII)	111	115	+4	+3.3%	+12	+12
Clerical (III & IV)	169	168	-0	-0.2%	+3	+8
Management & Administrative	329	331	+2	+0.7%	+16	+20
Support	266	270	+4	+1.4%	-44	-46
Maintenance/ Technical	24	24	-0	-0.0%	-0	-1
General Support	291	295	+4	+1.3%	-44	-47
Health Care Assistants	1,201	1,186	-15	-1.3%	+47	+37
Care, other	103	107	+3	+3.3%	+3	+8
Patient & Client Care	1,304	1,292	-12	-0.9%	+51	+45

other Community Services

Oct 2020 (Dec 2019 figure: 78)	WTE Sep 2020	WTE Oct 2020	WTE change since Sep 20	% change since Sep 20	WTE change since Dec 19	WTE change since Oct 19
Overall	73	72	-1	-1.5%	-7	-5
Health Science/ Diagnostics				-100.0%	-1	-1
Health & Social Care Professionals				-100.0%	-1	-1
Management (VIII & above)	19	19	+0	+0.2%	-1	-0
Administrative/ Supervisory (V to VII)	23	22	-1	-5.3%	-2	-1
Clerical (III & IV)	30	30	+0	+0.4%	-3	-3
Management & Administrative	73	71	-1	-1.5%	-6	-4
Health Care Assistants	0	0			+0	
Patient & Client Care	0	0			+0	

Social Care Services Employment by CHO & Admin : Oct 2020

Oct 2020 (Dec 2019 figure: 31,535)	WTE Sep 2020	WTE Oct 2020	WTE change since Sep 20	% change since Sep 20	WTE change since Dec 19	WTE change since Oct 19
Overall	32,134	32,034	-100	-0.3%	+498	+608
CHO 1	3,436	3,407	-29	-0.9%	+73	+30
Health Service Executive	1,804	1,795	-9	-0.5%	-19	+20
Bros. of Charity, West Region	1,284	1,274	-10	-0.7%	-14	+5
Section 38 Voluntary Agencies	1,284	1,274	-10	-0.7%	-14	+5
CHO 2	3,088	3,069	-18	-0.6%	-33	+25
Health Service Executive	1,168	1,164	-3	-0.3%	+68	+86
Bros. of Charity, Clare	357	357	+0	+0.0%	+9	+15
Bros. of Charity, Limerick	575	578	+3	+0.6%	+58	+60
Daughters of Charity, Limerick	544	543	-1	-0.3%	-0	+8
Daughters of Charity, Roscrea	286	287	+1	+0.4%	-3	-4
Section 38 Voluntary Agencies	1,762	1,765	+3	+0.2%	+64	+80
CHO 3	2,930	2,930	-0	-0.0%	+132	+165
Health Service Executive	3,253	3,224	-29	-0.9%	+13	-39
Bros. of Charity, Southern	765	777	+12	+1.6%	+37	+42
Cope Foundation	1,120	1,150	+29	+2.6%	+59	+58
St. John of God, Kerry	323	319	-5	-1.5%	+3	+14
Section 38 Voluntary Agencies	2,208	2,245	+37	+1.7%	+99	+114
CHO 4	5,462	5,469	+8	+0.1%	+112	+75
Health Service Executive	2,053	2,070	+16	+0.8%	+41	+42
Bros. of Charity, Waterford	643	645	+2	+0.3%	+15	+21
Carriglea Cairde Services	207	208	+2	+0.7%	-6	+0
St. Patrick's, Kilkenny	289	287	-2	-0.6%	+8	-9
Section 38 Voluntary Agencies	1,138	1,140	+2	+0.1%	+17	+12
CHO 5	3,192	3,210	+18	+0.6%	+58	+54
Health Service Executive	573	574	+1	+0.1%	-1	-2
Children's Sunshine Home	57	56	-1	-2.1%	-3	-1
Leopardstown Park Hospital	209	207	-2	-0.9%	-3	-4
Royal Hospital, Donnybrook, Dublin	273	271	-2	-0.7%	-1	-3
St. John of God (IDS)	457	462	+6	+1.2%	+6	+16
Sunbeam House Services	440	445	+5	+1.1%	-5	+11
Section 38 Voluntary Agencies	1,436	1,441	+5	+0.4%	-6	+20
CHO 6	2,009	2,014	+6	+0.3%	-7	+18
Health Service Executive	1,164	1,155	-9	-0.8%	+59	+65
Cheeverstown House	390	389	-1	-0.2%	-7	-10
Kare, Newbridge, Co Kildare	364	362	-2	-0.7%	+2	+11
Peamount Hospital (Newcastle)	532	476	-56	-10.4%	-10	-14
Stewart's Hospital, (Palmerstown)	880	892	+12	+1.4%	+41	+45
St. John of God Liffey Services	775	779	+4	+0.5%	-9	+24
Section 38 Voluntary Agencies	2,941	2,898	-43	-1.5%	+17	+56
CHO 7	4,105	4,054	-52	-1.3%	+76	+121
Health Service Executive	2,112	2,083	-30	-1.4%	-16	-20
Muiriosa Foundation, Laois/Offaly	310	314	+4	+1.2%	+12	+10
Muiriosa Foundation, Longford/Westmeath	279	280	+1	+0.4%	+10	+10

Oct 2020 (Dec 2019 figure: 31,535)	WTE Sep 2020	WTE Oct 2020	WTE change since Sep 20	% change since Sep 20	WTE change since Dec 19	WTE change since Oct 19
Overall	32,134	32,034	-100	-0.3%	+498	+608
Muiriosa Foundation, South Kildare	338	335	-2	-0.6%	+2	+4
St. John of God, Drumcar	637	636	-1	-0.2%	-11	+6
Section 38 Voluntary Agencies	1,564	1,565	+1	+0.1%	+13	+29
CHO 8	3,676	3,648	-29	-0.8%	-3	+9
Health Service Executive	1,122	1,117	-5	-0.5%	+22	+2
Central Remedial Clinic	287	295	+8	+2.8%	+16	+18
Daughters of Charity, Dublin	1,052	1,051	-1	-0.1%	+16	+26
Incorporated Orthopaedic Hospital	270	266	-4	-1.4%	+40	+40
St. Michael's House, Dublin	1,433	1,433	-0	-0.0%	+2	+30
Section 38 Voluntary Agencies	3,042	3,044	+3	+0.1%	+76	+114
CHO 9	4,164	4,161	-2	-0.1%	+98	+116
other Community Services	73	72	-1	-1.5%	-7	-5

Disability Services Employment by CHO & Admin: Oct 2020

Oct 2020 (Dec 2019 figure: 18,303)	WTE Sep 2020	WTE Oct 2020	WTE change since Sep 20	% change since Sep 20	WTE change since Dec 19	WTE change since Oct 19
Overall	18,624	18,691	+67	+0.4%	+388	+588
CHO 1	1,546	1,553	+7	+0.5%	+55	+58
Health Service Executive	214	217	+3	+1.3%	+8	+5
Bros. of Charity, West Region	1,284	1,274	-10	-0.7%	-14	+5
Section 38 Voluntary Agencies	1,284	1,274	-10	-0.7%	-14	+5
CHO 2	1,498	1,491	-7	-0.5%	-6	+10
Health Service Executive	137	138	+1	+0.8%	+16	+15
Bros. of Charity, Clare	357	357	+0	+0.0%	+9	+15
Bros. of Charity, Limerick	575	578	+3	+0.6%	+58	+60
Daughters of Charity, Limerick	544	543	-1	-0.3%	-0	+8
Daughters of Charity, Roscrea	286	287	+1	+0.4%	-3	-4
Section 38 Voluntary Agencies	1,762	1,765	+3	+0.2%	+64	+80
CHO 3	1,900	1,904	+4	+0.2%	+80	+94
Health Service Executive	303	302	-1	-0.4%	+9	+10
Bros. of Charity, Southern	765	777	+12	+1.6%	+37	+42
Cope Foundation	1,120	1,150	+29	+2.6%	+59	+58
St. John of God, Kerry	323	319	-5	-1.5%	+3	+14
Section 38 Voluntary Agencies	2,208	2,245	+37	+1.7%	+99	+114
CHO 4	2,511	2,547	+35	+1.4%	+108	+123
Health Service Executive	366	397	+31	+8.4%	+15	+37
Bros. of Charity, Waterford	643	645	+2	+0.3%	+15	+21
Carriglea Cairde Services	207	208	+2	+0.7%	-6	+0
St. Patrick's, Kilkenny	289	287	-2	-0.6%	+8	-9
Section 38 Voluntary Agencies	1,138	1,140	+2	+0.1%	+17	+12
CHO 5	1,504	1,537	+32	+2.2%	+31	+48
Health Service Executive	235	241	+6	+2.5%	+8	+5
Children's Sunshine Home	57	56	-1	-2.1%	-3	-1
St. John of God (IDS)	457	462	+6	+1.2%	+6	+16
Sunbeam House Services	440	445	+5	+1.1%	-5	+11
Section 38 Voluntary Agencies	954	963	+9	+1.0%	-1	+27
CHO 6	1,189	1,204	+15	+1.3%	+6	+31
Health Service Executive	128	130	+2	+1.7%	+29	+46
Cheeverstown House	390	389	-1	-0.2%	-7	-10
Kare, Newbridge, Co Kildare	364	362	-2	-0.7%	+2	+11
Peamount Hospital (Newcastle)	532	476	-56	-10.4%	-10	-14
Stewart's Hospital, (Palmerstown)	880	892	+12	+1.4%	+41	+45
St. John of God Liffey Services	775	779	+4	+0.5%	-9	+24
Section 38 Voluntary Agencies	2,941	2,898	-43	-1.5%	+17	+56
CHO 7	3,069	3,028	-41	-1.3%	+46	+101
Health Service Executive	600	606	+5	+0.9%	-5	+5
Muiriosa Foundation, Laois/Offaly	310	314	+4	+1.2%	+12	+10
Muiriosa Foundation, Longford/Westmeath	279	280	+1	+0.4%	+10	+10
Muiriosa Foundation, South Kildare	338	335	-2	-0.6%	+2	+4
St. John of God, Drumcar	637	636	-1	-0.2%	-11	+6

Oct 2020 (Dec 2019 figure: 18,303)	WTE Sep 2020	WTE Oct 2020	WTE change since Sep 20	% change since Sep 20	WTE change since Dec 19	WTE change since Oct 19
Overall	18,624	18,691	+67	+0.4%	+388	+588
Section 38 Voluntary Agencies	1,564	1,565	+1	+0.1%	+13	+29
CHO 8	2,164	2,171	+6	+0.3%	+8	+34
Health Service Executive	465	472	+7	+1.5%	+22	+11
Central Remedial Clinic	287	295	+8	+2.8%	+16	+18
Daughters of Charity, Dublin	1,052	1,051	-1	-0.1%	+16	+26
St. Michael's House, Dublin	1,433	1,433	-0	-0.0%	+2	+30
Section 38 Voluntary Agencies	2,772	2,778	+7	+0.2%	+35	+74
CHO 9	3,237	3,251	+14	+0.4%	+57	+86
other Community Services	6	6			+1	+1

Older Persons Services Employment by CHO & Admin: Oct 2020

Oct 2020 (Dec 2019 figure: 13,232)	WTE Sep 2020	WTE Oct 2020	WTE change since Sep 20	% change since Sep 20	WTE change since Dec 19	WTE change since Oct 19
Overall	13,509	13,342	-167	-1.2%	+110	+20
CHO 1	1,890	1,854	-37	-1.9%	+18	-28
CHO 2	1,590	1,578	-12	-0.7%	-28	+15
CHO 3	1,030	1,026	-4	-0.4%	+52	+71
CHO 4	2,950	2,923	-28	-0.9%	+3	-48
CHO 5	1,687	1,673	-14	-0.9%	+26	+6
Health Service Executive	338	332	-5	-1.6%	-9	-7
Leopardstown Park Hospital	209	207	-2	-0.9%	-3	-4
Royal Hospital, Donnybrook, Dublin	273	271	-2	-0.7%	-1	-3
Section 38 Voluntary Agencies	482	478	-4	-0.8%	-4	-7
CHO 6	820	810	-9	-1.1%	-13	-13
CHO 7	1,037	1,026	-11	-1.1%	+30	+20
CHO 8	1,512	1,477	-35	-2.3%	-11	-25
Health Service Executive	657	645	-12	-1.8%	+0	-10
Incorporated Orthopaedic Hospital	270	266	-4	-1.4%	+40	+40
Section 38 Voluntary Agencies	270	266	-4	-1.4%	+40	+40
CHO 9	926	910	-16	-1.7%	+41	+30
other Community Services	67	66	-1	-1.6%	-8	-6

Social Care Services Employment by CHO etc. Oct 2020

Bros. of Charity, Clare

Oct 2020 (Dec 2019 figure: 348)	WTE Sep 2020	WTE Oct 2020	WTE change since Sep 20	% change since Sep 20	WTE change since Dec 19	WTE change since Oct 19
Overall	357	357	+0	+0.0%	+9	+15
Consultants	0	0	+0	+110.0%	+0	+0
Medical & Dental	0	0	+0	+110.0%	+0	+0
Nurse/ Midwife Manager				-100.0%		
Staff Nurse/ Staff Midwife	2	2	-0	-1.0%	+0	+0
<i>Pre-registration Nurse Intern (COVID-19)</i>	1	1	-0	-40.0%	+1	+1
Nursing/ Midwifery Student	1	1	-0	-40.0%	+1	+1
Nursing & Midwifery	3	2	-0	-12.8%	+1	+1
Social Care	82	81	-1	-0.9%	-1	-4
Social Workers	2	2			-1	-1
Psychologists	3	3				
H&SC, Other	4	4			-0	-0
Health & Social Care Professionals	90	90	-1	-0.8%	-2	-5
Management (VIII & above)	1	1				
Administrative/ Supervisory (V to VII)	5	5	+0	+2.0%	+0	+0
Clerical (III & IV)	5	5	-0	-4.8%	+0	+1
Management & Administrative	11	11	-0	-1.3%	+1	+1
Health Care Assistants	221	222	+1	+0.6%	+10	+17
Care, other	32	32	-0	-0.4%	-1	+1
Patient & Client Care	253	254	+1	+0.5%	+10	+18

Oct 2020 (Dec 2019 figure: 520)	WTE Sep 2020	WTE Oct 2020	WTE change since Sep 20	% change since Sep 20	WTE change since Dec 19	WTE change since Oct 19
Overall	575	578	+3	+0.6%	+58	+60
Consultants	1	1			+0	+0
Medical & Dental	1	1			+0	+0
Nurse/ Midwife Manager	29	28	-1	-2.8%	+3	+1
Nurse/ Midwife Specialist & AN/MP	4	4			-1	+1
Staff Nurse/ Staff Midwife	90	93	+3	+2.9%	+9	+12
<i>Pre-registration Nurse Intern (COVID-19)</i>		1	+1	-100.0%	+1	+1
Nursing/ Midwifery Student		1	+1	-100.0%	+1	+1
Nursing & Midwifery	123	126	+3	+2.3%	+12	+15
Therapy Professions	14	14	-0	-0.1%	+2	+2
Social Care	100	101	+1	+1.3%	+16	+17
Social Workers	4	4	-0	-0.2%	-1	-1
Psychologists	6	6			+0	+0
H&SC, Other	2	1	-1	-62.5%	-0	+1
Health & Social Care Professionals	125	126	+0	+0.2%	+17	+19
Management (VIII & above)	2	2				
Administrative/ Supervisory (V to VII)	6	6	+0	+1.5%	+0	+0
Clerical (III & IV)	11	10	-0	-2.3%	-2	-2
Management & Administrative	18	18	-0	-0.8%	-2	-2
Support	7	8	+1	+7.8%	+0	+0
Maintenance/ Technical	2	2			-0	-1
General Support	9	10	+1	+6.1%	+0	-1
Health Care Assistants	205	203	-2	-1.0%	+24	+21
Care, other	92	94	+2	+1.9%	+7	+7
Patient & Client Care	298	297	-0	-0.1%	+31	+28

Oct 2020 (Dec 2019 figure: 740)	WTE Sep 2020	WTE Oct 2020	WTE change since Sep 20	% change since Sep 20	WTE change since Dec 19	WTE change since Oct 19
Overall	765	777	+12	+1.6%	+37	+42
Nurse/ Midwife Manager	15	15	+0	+0.3%	-0	-0
Nurse/ Midwife Specialist & AN/MP	3	3				
Staff Nurse/ Staff Midwife	55	54	-1	-2.6%	-5	-5
Nursing & Midwifery	73	72	-1	-1.9%	-6	-5
Therapy Professions	49	45	-4	-8.6%	-3	-4
Social Care	125	127	+1	+1.1%	+2	+3
Social Workers	16	17	+1	+4.1%	-0	-0
Psychologists	21	21	+0	+0.7%	+1	+3
Health & Social Care Professionals	211	209	-2	-1.0%	-0	+1
Management (VIII & above)	7	8	+0	+5.4%	+0	+0
Administrative/ Supervisory (V to VII)	10	10			+1	+0
Clerical (III & IV)	36	35	-1	-2.6%	+2	+1
Management & Administrative	53	53	-1	-1.0%	+3	+1
Support	14	12	-2	-12.5%	-2	-2
Maintenance/ Technical	2	2				
General Support	16	14	-2	-11.3%	-2	-2
Health Care Assistants	214	228	+14	+6.6%	+22	+24
Care, other	197	201	+4	+1.9%	+20	+23
Patient & Client Care	412	430	+18	+4.4%	+42	+47

Oct 2020 (Dec 2019 figure: 630)	WTE Sep 2020	WTE Oct 2020	WTE change since Sep 20	% change since Sep 20	WTE change since Dec 19	WTE change since Oct 19
Overall	643	645	+2	+0.3%	+15	+21
Consultants	1	1			-0	-0
Medical & Dental	1	1			-0	-0
Nurse/ Midwife Manager	21	21	-0	-0.7%	-3	-3
Staff Nurse/ Staff Midwife	45	46	+0	+1.0%	-2	+1
<i>Pre-registration Nurse Intern (COVID-19)</i>	3	1	-2	-63.6%	+1	+1
Nursing/ Midwifery Student	3	1	-2	-63.6%	+1	+1
Nursing & Midwifery	69	68	-1	-2.1%	-4	-1
Therapy Professions	2	2			-1	-1
Social Care	75	72	-3	-4.1%	+5	+8
Social Workers	8	8	+0	+5.3%	-1	-1
Psychologists	4	4			-0	-1
H&SC, Other	4	4	-0	-5.0%	-0	-0
Health & Social Care Professionals	92	89	-3	-3.1%	+2	+5
Management (VIII & above)	5	5	+0	+0.6%	+0	+0
Administrative/ Supervisory (V to VII)	15	16	+1	+7.0%	+3	+3
Clerical (III & IV)	26	25	-0	-0.4%	-0	-2
Management & Administrative	45	46	+1	+2.1%	+3	+1
Support	2	1	-0	-11.5%	-0	-0
Maintenance/ Technical	3	3				
General Support	5	4	-0	-4.0%	-0	-0
Health Care Assistants	343	345	+1	+0.4%	+14	+13
Care, other	88	91	+4	+4.5%	+0	+3
Patient & Client Care	431	436	+5	+1.3%	+14	+16

Carriglea Cairde Services

Oct 2020 (Dec 2019 figure: 214)	WTE Sep 2020	WTE Oct 2020	WTE change since Sep 20	% change since Sep 20	WTE change since Dec 19	WTE change since Oct 19
Overall	207	208	+2	+0.7%	-6	+0
Nurse/ Midwife Manager	13	13	+0	+0.3%	+1	+0
Staff Nurse/ Staff Midwife	25	25	+0	+1.1%	-1	+1
Post-registration Nurse/ Midwife Student	3	2	-1	-30.2%	+2	+2
Nursing/ Midwifery Student	3	2	-1	-30.2%	+2	+2
Nursing & Midwifery	40	40	-0	-1.2%	+2	+3
Social Care	32	31	-2	-5.1%	-6	-4
Health & Social Care Professionals	32	31	-2	-5.1%	-6	-4
Management (VIII & above)	2	2				
Administrative/ Supervisory (V to VII)	3	3	+0	+0.3%	+0	+0
Clerical (III & IV)	6	6	+0	+4.6%	-1	-0
Management & Administrative	11	11	+0	+2.6%	-0	-0
Support	6	6	-0	-0.3%	+2	+2
Maintenance/ Technical	1	1				
General Support	8	8	-0	-0.3%	+2	+2
Health Care Assistants	73	75	+2	+2.6%	+1	+4
Care, other	43	44	+2	+3.5%	-4	-4
Patient & Client Care	115	119	+3	+2.9%	-4	+0

Central Remedial Clinic

Oct 2020 (Dec 2019 figure: 278)	WTE Sep 2020	WTE Oct 2020	WTE change since Sep 20	% change since Sep 20	WTE change since Dec 19	WTE change since Oct 19
Overall	287	295	+8	+2.8%	+16	+18
Consultants	1	1				
Medical/ Dental, other	0	0				
Medical & Dental	2	2				
Nurse/ Midwife Manager	2	2				
Nurse/ Midwife Specialist & AN/MP	2	2			+1	
Staff Nurse/ Staff Midwife	4	4			+1	+2
Nursing/ Midwifery other	1	1			+1	+1
Nursing & Midwifery	9	9			+3	+3
Therapy Professions	75	80	+5	+6.0%	+2	+2
Health Science/ Diagnostics	13	13			-2	-2
Social Workers	9	9			+1	+1
Psychologists	11	13	+2	+18.4%	+2	+2
Health & Social Care Professionals	108	114	+7	+6.0%	+3	+3
Management (VIII & above)	6	6			-1	-2
Administrative/ Supervisory (V to VII)	15	15				
Clerical (III & IV)	33	33			+1	+2
Management & Administrative	55	55			-0	-0
Support	14	14			+0	+0
Maintenance/ Technical	1	1				
General Support	15	15			+0	+0
Health Care Assistants	57	57	+1	+1.1%	+7	+2
Care, other	42	43	+1	+2.4%	+4	+10
Patient & Client Care	99	100	+2	+1.6%	+11	+12

Oct 2020 (Dec 2019 figure: 396)	WTE Sep 2020	WTE Oct 2020	WTE change since Sep 20	% change since Sep 20	WTE change since Dec 19	WTE change since Oct 19
Overall	390	389	-1	-0.2%	-7	-10
Consultants	0	0				
Medical/ Dental, other	1	1				
Medical & Dental	1	1				
Nurse/ Midwife Manager	27	27			+1	-1
Nurse/ Midwife Specialist & AN/MP	2	2				
Staff Nurse/ Staff Midwife	102	102	-1	-0.8%	-6	-4
Nursing & Midwifery	131	130	-1	-0.6%	-5	-5
Therapy Professions	12	12			-1	-2
Social Care	33	34	+1	+3.0%	-1	-1
Social Workers	5	5			-1	-1
Psychologists	5	5			+1	+1
Pharmacy	0	0			-0	-0
H&SC, Other	2	2				
Health & Social Care Professionals	57	58	+1	+1.8%	-2	-4
Management (VIII & above)	2	2				
Administrative/ Supervisory (V to VII)	15	15			+1	+1
Clerical (III & IV)	12	12			+1	+1
Management & Administrative	30	30			+2	+2
Support	27	27				+0
Maintenance/ Technical	4	4				
General Support	30	30				
Health Care Assistants	129	129			-1	-2
Care, other	12	11	-1	-8.6%	-1	-1
Patient & Client Care	141	140	-1	-0.7%	-3	-3

Children's Sunshine Home

Oct 2020 (Dec 2019 figure: 58)	WTE Sep 2020	WTE Oct 2020	WTE change since Sep 20	% change since Sep 20	WTE change since Dec 19	WTE change since Oct 19
Overall	57	56	-1	-2.1%	-3	-1
Nurse/ Midwife Manager	8	8			+1	+1
Staff Nurse/ Staff Midwife	18	17	-1	-5.5%	-4	-1
Nursing & Midwifery	26	25	-1	-3.8%	-3	-0
Therapy Professions	1	1	-0	-16.8%	-1	-1
Social Workers	1	1				
Health & Social Care Professionals	2	2	-0	-10.3%	-1	-1
Management (VIII & above)	3	3				
Administrative/ Supervisory (V to VII)	4	4				
<i>General Administrative (III & IV)</i>	1	1			+1	
Clerical (III & IV)	1	1				
Management & Administrative	8	8				
Support	3	3				
General Support	3	3				
Health Care Assistants	13	13			-1	-1
Care, other	5	5			+1	+1
Patient & Client Care	18	18			+1	+1

Oct 2020 (Dec 2019 figure: 1,091)	WTE Sep 2020	WTE Oct 2020	WTE change since Sep 20	% change since Sep 20	WTE change since Dec 19	WTE change since Oct 19
Overall	1,120	1,150	+29	+2.6%	+59	+58
Nurse/ Midwife Manager	41	42	+1	+2.6%	+1	+1
Nurse/ Midwife Specialist & AN/MP	10	11	+1	+10.5%	+1	+1
Staff Nurse/ Staff Midwife	166	163	-3	-1.6%	-6	-5
Pre-registration Nurse/ Midwife Intern				-100.0%	-8	-9
Pre-registration Nurse Intern (COVID-19)	19	17	-2	-10.5%	+17	+17
Nursing/ Midwifery Student	19	17	-2	-10.5%	+11	+9
Nursing/ Midwifery other	1		-1	-100.0%	-1	-1
Nursing & Midwifery	236	233	-3	-1.3%	+7	+5
Therapy Professions	37	37			-1	+0
Social Care	34	43	+9	+27.3%	+11	+9
Social Workers	9	9				
Psychologists	11	11			+1	+1
H&SC, Other	3	3				
Health & Social Care Professionals	93	102	+9	+9.9%	+12	+10
Management (VIII & above)	7	7			+1	+1
Administrative/ Supervisory (V to VII)	23	23			+4	+4
Clerical (III & IV)	25	28	+3	+10.5%	+5	+5
Management & Administrative	55	58	+3	+4.8%	+9	+9
Support	78	83	+5	+6.9%	+6	+12
Maintenance/ Technical	6	7	+1	+15.8%	+1	+1
General Support	84	90	+6	+7.5%	+7	+13
Health Care Assistants	577	589	+12	+2.1%	+25	+13
Care, other	76	79	+3	+3.3%	-1	+7
Patient & Client Care	653	667	+14	+2.2%	+24	+20

Daughters of Charity, Dublin

Oct 2020 (Dec 2019 figure: 1,034)	WTE Sep 2020	WTE Oct 2020	WTE change since Sep 20	% change since Sep 20	WTE change since Dec 19	WTE change since Oct 19
Overall	1,052	1,051	-1	-0.1%	+16	+26
Consultants	2	2			+1	+1
Medical/ Dental, other	2	2				
Medical & Dental	4	4			+1	+1
Nurse/ Midwife Manager	59	60	+1	+1.9%	-2	-0
Nurse/ Midwife Specialist & AN/MP	9	9	+0	+2.4%	+1	+1
Staff Nurse/ Staff Midwife	188	190	+2	+0.9%	+4	+1
<i>Pre-registration Nurse/ Midwife Intern</i>				-100.0%	-8	
Nursing/ Midwifery Student				-100.0%	-8	
Nursing/ Midwifery other	4	4				
Nursing & Midwifery	260	263	+3	+1.1%	-5	+2
Therapy Professions	33	31	-2	-4.9%	-2	-1
Social Care	173	171	-1	-0.8%	+8	+11
Social Workers	12	13	+1	+8.6%	+3	+3
Psychologists	11	11			+4	+4
Pharmacy	2	2				
H&SC, Other	5	5			+1	+1
Health & Social Care Professionals	235	233	-2	-0.8%	+14	+18
Management (VIII & above)	9	9			+3	+2
Administrative/ Supervisory (V to VII)	27	27			+2	+1
Clerical (III & IV)	32	31	-1	-3.1%	-2	-1
Management & Administrative	68	67	-1	-1.5%	+3	+2
Support	77	77			-1	-2
Maintenance/ Technical	8	8				-1
General Support	85	85			-1	-3
Health Care Assistants	369	366	-3	-0.9%	+4	+7
Care, other	31	33	+2	+6.8%	+1	+0
Patient & Client Care	400	399	-1	-0.3%	+5	+7

Daughters of Charity, Limerick

Oct 2020 (Dec 2019 figure: 543)	WTE Sep 2020	WTE Oct 2020	WTE change since Sep 20	% change since Sep 20	WTE change since Dec 19	WTE change since Oct 19
Overall	544	543	-1	-0.3%	-0	+8
Medical/ Dental, other	1	1				
Medical & Dental	1	1				
Nurse/ Midwife Manager	35	34	-1	-2.8%	-1	+1
Nurse/ Midwife Specialist & AN/MP	7	7			-1	-1
Staff Nurse/ Staff Midwife	143	145	+2	+1.1%	+2	-1
<i>Pre-registration Nurse/ Midwife Intern</i>				-100.0%	-7	
<i>Pre-registration Nurse Intern (COVID-19)</i>	1	1			+1	+1
Nursing/ Midwifery Student	1	1			-11	+1
Nursing/ Midwifery other	3	3				
Nursing & Midwifery	190	190	+1	+0.3%	-10	+0
Therapy Professions	15	15				
Social Care	58	59	+1	+2.0%	+6	+5
Social Workers	5	5			+0	+0
Psychologists	7	7			+4	+4
H&SC, Other	6	6				
Health & Social Care Professionals	91	92	+1	+1.3%	+10	+9
Management (VIII & above)	2	2				
Administrative/ Supervisory (V to VII)	11	11			+1	+1
Clerical (III & IV)	14	14			-1	-1
Management & Administrative	27	27				
Support	43	43			+2	+3
Maintenance/ Technical	4	4				
General Support	48	48			+2	+3
Health Care Assistants	166	162	-4	-2.5%	-3	-5
Care, other	22	23	+1	+4.3%	+1	+1
Patient & Client Care	188	185	-3	-1.7%	-2	-4

Daughters of Charity, Roscrea

Oct 2020 (Dec 2019 figure: 290)	WTE Sep 2020	WTE Oct 2020	WTE change since Sep 20	% change since Sep 20	WTE change since Dec 19	WTE change since Oct 19
Overall	286	287	+1	+0.4%	-3	-4
Nurse/ Midwife Manager	15	15			-1	-1
Staff Nurse/ Staff Midwife	18	19	+1	+5.6%	+1	+1
Nursing/ Midwifery other	1	1				
Nursing & Midwifery	33	34	+1	+3.0%	-1	-1
Therapy Professions	2	2			+0	+0
Social Care	25	25			+6	+6
Social Workers	1	1				
Psychologists	1	1				
Health & Social Care Professionals	29	29			+6	+6
Management (VIII & above)	1	1				
Administrative/ Supervisory (V to VII)	7	7				
Clerical (III & IV)	7	7			+0	
Management & Administrative	15	15			+0	
Support	4	4				-1
Maintenance/ Technical	5	5			-1	-1
General Support	9	9			-1	-2
Health Care Assistants	198	199	+0	+0.1%	-4	-4
Care, other	2	2			-4	-4
Patient & Client Care	200	200	+0	+0.1%	-8	-8

Incorporated Orthopaedic Hospital

Oct 2020 (Dec 2019 figure: 226)	WTE Sep 2020	WTE Oct 2020	WTE change since Sep 20	% change since Sep 20	WTE change since Dec 19	WTE change since Oct 19
Overall	270	266	-4	-1.4%	+40	+40
Consultants	2	2			+1	+1
Registrars	2	2				
SHO/ Interns	4	4			-1	-1
Medical & Dental	8	8				
Nurse/ Midwife Manager	17	17			-1	-1
Staff Nurse/ Staff Midwife	74	70	-4	-5.0%	+10	+10
Nursing & Midwifery	91	87	-4	-4.1%	+10	+10
Therapy Professions	34	34			+14	+13
Health Science/ Diagnostics	1	1				
Social Workers	9	9			+2	+2
Pharmacy	4	4			+1	+1
Health & Social Care Professionals	47	47			+16	+16
Management (VIII & above)	1	1				
Administrative/ Supervisory (V to VII)	6	6				
Clerical (III & IV)	11	11			+1	+1
Management & Administrative	18	18			+1	+1
Support	40	40			+6	+6
Maintenance/ Technical	2	2				
General Support	42	42			+6	+6
Health Care Assistants	64	64			+8	+8
Care, other	0	0				
Patient & Client Care	64	64			+8	+8

Kare, Newbridge, Co Kildare

Oct 2020 (Dec 2019 figure: 360)	WTE Sep 2020	WTE Oct 2020	WTE change since Sep 20	% change since Sep 20	WTE change since Dec 19	WTE change since Oct 19
Overall	364	362	-2	-0.7%	+2	+11
Nurse/ Midwife Manager	7	7			-5	-5
Staff Nurse/ Staff Midwife	24	24	+1	+2.7%	+2	+2
Nursing & Midwifery	31	32	+1	+2.0%	-3	-2
Therapy Professions	12	12	-0	-0.2%	-2	-1
Social Care	63	64	+1	+1.9%	+3	+4
Social Workers	4	4				
Psychologists	6	7	+1	+10.2%	+2	+4
Health & Social Care Professionals	86	87	+2	+2.1%	+4	+7
Management (VIII & above)	5	6	+1	+10.7%	-0	-0
Administrative/ Supervisory (V to VII)	13	13	-0	-0.8%	+1	+1
Clerical (III & IV)	14	14			+2	+2
Management & Administrative	32	32	+0	+1.4%	+2	+2
Support	1	1			-0	-0
General Support	1	1			-0	-0
Health Care Assistants	110	102	-8	-7.3%	+1	+1
Care, other	105	107	+3	+2.5%	-2	+3
Patient & Client Care	215	209	-5	-2.5%	-1	+4

Leopardstown Park Hospital

Oct 2020 (Dec 2019 figure: 211)	WTE Sep 2020	WTE Oct 2020	WTE change since Sep 20	% change since Sep 20	WTE change since Dec 19	WTE change since Oct 19
Overall	209	207	-2	-0.9%	-3	-4
Medical/ Dental, other	1	1				
Medical & Dental	1	1				
Nurse/ Midwife Manager	16	15	-1	-5.5%	-0	-0
Staff Nurse/ Staff Midwife	41	42	+1	+2.1%	-1	+3
Nursing & Midwifery	57	57	-0	-0.1%	-1	+2
Therapy Professions	8	8			+1	+1
Social Workers	1	1				
Pharmacy	2	2	+0	+2.2%	+0	-0
Health & Social Care Professionals	11	11	+0	+0.4%	+1	+1
Management (VIII & above)	1	1				
Administrative/ Supervisory (V to VII)	7	7				
Clerical (III & IV)	12	12			+1	+1
Management & Administrative	20	20			+1	+1
Support	35	34	-1	-2.2%	+1	+0
Maintenance/ Technical	4	4				+1
General Support	39	38	-1	-1.9%	+1	+1
Health Care Assistants	78	77	-1	-1.4%	-4	-8
Care, other	3	3	-0	-3.2%	-2	-1
Patient & Client Care	81	80	-1	-1.5%	-6	-9

Muiriosa Foundation, Laois/Offaly

Oct 2020 (Dec 2019 figure: 302)	WTE Sep 2020	WTE Oct 2020	WTE change since Sep 20	% change since Sep 20	WTE change since Dec 19	WTE change since Oct 19
Overall	310	314	+4	+1.2%	+12	+10
Nurse/ Midwife Manager	15	15	-0	-0.3%	-0	-1
Staff Nurse/ Staff Midwife	29	30	+1	+5.1%	+4	+3
Pre-registration Nurse Intern (COVID-19)		1	+1	-100.0%	+1	+1
Nursing/ Midwifery Student		1	+1	-100.0%	+1	+1
Nursing & Midwifery	44	46	+2	+5.3%	+4	+3
Social Care	103	102	-2	-1.8%	+7	+6
Social Workers	3	4	+0	+7.5%	-0	
Psychologists	1	1				
H&SC, Other	1	1				
Health & Social Care Professionals	109	107	-2	-1.5%	+7	+6
Management (VIII & above)	2	2			+1	+1
Administrative/ Supervisory (V to VII)	5	6	+1	+16.4%	+1	+1
Clerical (III & IV)	11	12	+0	+3.5%	+1	-1
Management & Administrative	18	20	+1	+6.7%	+3	+1
Support	1	1			+0	+0
Maintenance/ Technical	2	2				
General Support	3	3			+0	+0
Health Care Assistants	107	110	+2	+2.2%	+0	+1
Care, other	28	28	-0	-1.7%	-2	-2
Patient & Client Care	136	137	+2	+1.4%	-2	-1

Muiriosa Foundation, Longford/Westmeath

Oct 2020 (Dec 2019 figure: 270)	WTE Sep 2020	WTE Oct 2020	WTE change since Sep 20	% change since Sep 20	WTE change since Dec 19	WTE change since Oct 19
Overall	279	280	+1	+0.4%	+10	+10
Nurse/ Midwife Manager	9	9				
Staff Nurse/ Staff Midwife	5	5	-0	-3.1%	-1	-1
Nursing & Midwifery	14	14	-0	-1.1%	-1	-1
Therapy Professions	3	3				
Social Care	99	98	-0	-0.2%	+5	+7
Social Workers	4	4			+1	+2
Psychologists	2	2	+0	+1.1%	-0	-0
H&SC, Other	3	3	+0	+5.3%	-0	-0
Health & Social Care Professionals	110	110	-0	-0.0%	+5	+8
Administrative/ Supervisory (V to VII)	5	5			+1	+1
Clerical (III & IV)	10	10	-0	-0.5%	-0	-0
Management & Administrative	15	15	-0	-0.3%	+1	+0
Support	1	1				
Maintenance/ Technical	3	3				
General Support	4	4				
Health Care Assistants	120	121	+0	+0.4%	+6	+3
Care, other	16	17	+1	+5.1%	-1	-1
Patient & Client Care	136	137	+1	+0.9%	+5	+2

Oct 2020 (Dec 2019 figure: 334)	WTE Sep 2020	WTE Oct 2020	WTE change since Sep 20	% change since Sep 20	WTE change since Dec 19	WTE change since Oct 19
Overall	338	335	-2	-0.6%	+2	+4
Nurse/ Midwife Manager	13	13	+0	+0.4%	-5	-4
Nurse/ Midwife Specialist & AN/MP	1	2	+0	+12.3%	+0	+0
Staff Nurse/ Staff Midwife	22	22	+0	+1.4%	-2	-3
<i>Pre-registration Nurse Intern (COVID-19)</i>	6		-6	-100.0%		
<i>Nursing/ Midwifery awaiting registration</i>				-100.0%		-1
Nursing/ Midwifery Student	6		-6	-100.0%		-1
Nursing/ Midwifery other	5	5			-0	-0
Nursing & Midwifery	47	42	-5	-11.4%	-7	-8
Therapy Professions	8	9	+1	+17.4%	+1	+1
Social Care	91	94	+3	+2.7%	+5	+9
Social Workers	2	2				-1
Psychologists	2	2			-0	
H&SC, Other	3	3				+1
Health & Social Care Professionals	106	110	+4	+3.6%	+6	+9
Management (VIII & above)	5	5			+2	+2
Administrative/ Supervisory (V to VII)	12	12	-0	-0.9%	-2	-2
Clerical (III & IV)	13	13	-1	-4.4%	-1	-1
Management & Administrative	30	29	-1	-2.3%	-1	-1
Support	14	14	-0	-1.2%	-2	-3
Maintenance/ Technical	5	5				
General Support	19	19	-0	-0.9%	-2	-3
Health Care Assistants	128	128	+0	+0.1%	+5	+8
Care, other	8	8	+0	+0.5%		-1
Patient & Client Care	135	136	+0	+0.2%	+5	+7

Peamount Hospital (Newcastle)

Oct 2020 (Dec 2019 figure: 486)	WTE Sep 2020	WTE Oct 2020	WTE change since Sep 20	% change since Sep 20	WTE change since Dec 19	WTE change since Oct 19
Overall	532	476	-56	-10.4%	-10	-14
Registrars	2	1	-1	-25.9%	-1	-0
SHO/ Interns	7	7	+0	+3.4%	+0	+0
Medical & Dental	9	9	-0	-3.1%	-0	-0
Nurse/ Midwife Manager	31	27	-4	-12.3%	+1	+0
Nurse/ Midwife Specialist & AN/MP	2	2				
Staff Nurse/ Staff Midwife	90	75	-15	-16.5%	-7	-8
Nursing/ Midwifery other	1	1			+1	+1
Nursing & Midwifery	124	105	-19	-15.1%	-5	-6
Therapy Professions	37	27	-10	-27.4%	-2	-3
Health Science/ Diagnostics	3	3				
Social Care	4	4			+2	+2
Social Workers	6	5	-1	-19.7%		+1
Pharmacy	4	4	+0	+2.8%	+0	+0
Health & Social Care Professionals	55	44	-11	-20.6%	+0	-0
Management (VIII & above)	4	4				
Administrative/ Supervisory (V to VII)	18	18	-1	-4.5%	+4	+2
Clerical (III & IV)	18	17	-1	-7.3%	-3	-3
Management & Administrative	41	39	-2	-5.3%	+1	-1
Support	45	42	-3	-7.1%	-5	-7
Maintenance/ Technical	9	8	-0	-3.2%	+1	+0
General Support	54	50	-3	-6.5%	-4	-6
Health Care Assistants	246	226	-20	-8.0%	-2	-0
Care, other	4	4			+0	+0
Patient & Client Care	249	230	-20	-7.8%	-2	+0

Oct 2020 (Dec 2019 figure: 272)	WTE Sep 2020	WTE Oct 2020	WTE change since Sep 20	% change since Sep 20	WTE change since Dec 19	WTE change since Oct 19
Overall	273	271	-2	-0.7%	-1	-3
Registrars	1	1				
Medical/ Dental, other	1	1				
Medical & Dental	2	2				
Nurse/ Midwife Manager	18	19	+1	+2.7%	-2	-2
Staff Nurse/ Staff Midwife	76	73	-3	-3.3%	-1	-1
Nursing & Midwifery	94	92	-2	-2.1%	-2	-2
Therapy Professions	27	28	+1	+3.7%	-2	-1
Social Workers	5	5			-1	-1
Psychologists	1	1				
Health & Social Care Professionals	32	33	+1	+3.1%	-3	-2
Management (VIII & above)	1	1			+1	+1
Administrative/ Supervisory (V to VII)	6	5	-1	-17.1%	-1	-1
Clerical (III & IV)	9	9			+2	+1
Management & Administrative	16	15	-1	-6.2%	+2	+1
Support	34	34			-2	-2
Maintenance/ Technical	5	5			+1	+1
General Support	39	39			-1	-1
Health Care Assistants	89	89			+3	+1
Care, other	1	1			+1	+1
Patient & Client Care	90	90			+4	+2

Stewart's Hospital, (Palmerstown)

Oct 2020 (Dec 2019 figure: 852)	WTE Sep 2020	WTE Oct 2020	WTE change since Sep 20	% change since Sep 20	WTE change since Dec 19	WTE change since Oct 19
Overall	880	892	+12	+1.4%	+41	+45
Consultants	0	0				
Registrars				-100.0%		
Medical & Dental	0	0				
Nurse/ Midwife Manager	33	31	-2	-6.1%	-5	-6
Staff Nurse/ Staff Midwife	73	82	+9	+11.9%	+9	+11
<i>Pre-registration Nurse Intern (COVID-19)</i>	11		-11	-100.0%		
Nursing/ Midwifery Student	11		-11	-100.0%		
Nursing/ Midwifery other	1	1				
Nursing & Midwifery	117	113	-4	-3.6%	+4	+5
Therapy Professions	14	13	-1	-7.8%	-3	-3
Social Care	13	13			+3	+3
Social Workers	6	6			+1	+1
Psychologists	4	4			-1	-1
Health & Social Care Professionals	37	36	-1	-3.0%	+0	+1
Management (VIII & above)	12	13	+1	+8.3%	+2	+1
Administrative/ Supervisory (V to VII)	16	15	-1	-6.3%	+1	-1
Clerical (III & IV)	21	22	+1	+5.8%	-1	-2
Management & Administrative	49	50	+1	+2.5%	+2	-2
Support	56	54	-2	-2.9%	-3	-3
Maintenance/ Technical	6	6			+1	+1
General Support	62	60	-2	-2.7%	-2	-2
Health Care Assistants	499	516	+17	+3.4%	+35	+45
Care, other	116	117	+1	+0.6%	+1	-2
Patient & Client Care	615	633	+18	+2.9%	+36	+43

Oct 2020 (Dec 2019 figure: 647)	WTE Sep 2020	WTE Oct 2020	WTE change since Sep 20	% change since Sep 20	WTE change since Dec 19	WTE change since Oct 19
Overall	637	636	-1	-0.2%	-11	+6
Registrars	1	1				
Medical & Dental	1	1				
Nurse/ Midwife Manager	45	27	-18	-39.8%	-16	-15
Nurse/ Midwife Specialist & AN/MP	4	1	-3	-80.1%	-3	-3
Staff Nurse/ Staff Midwife	143	152	+9	+6.1%	-1	+15
<i>Pre-registration Nurse/ Midwife Intern</i>		1	+1	-100.0%	+1	+1
<i>Pre-registration Nurse Intern (COVID-19)</i>	12		-12	-100.0%		
Nursing/ Midwifery Student	12	1	-11	-91.8%	+1	+1
<i>Nursing Education/Clinical</i>		22	+22	-100.0%	+22	+22
Nursing/ Midwifery other		22	+22	-100.0%	+22	+22
Nursing & Midwifery	205	203	-2	-1.1%	+3	+19
Therapy Professions	3	3				
Social Care	76	75	-1	-0.8%	-3	-2
Social Workers	2	2			-0	
Psychologists	1	1				
Health & Social Care Professionals	82	81	-1	-0.7%	-3	-2
Management (VIII & above)	1	1			-0	-0
Administrative/ Supervisory (V to VII)	6	6			-0	+0
Clerical (III & IV)	12	12	+0	+0.1%	+0	+1
Management & Administrative	18	18	+0	+0.1%	+0	+1
Support	20	20	-1	-2.9%	-4	-1
Maintenance/ Technical	3	3			-0	-0
General Support	23	23	-1	-2.5%	-4	-1
Health Care Assistants	278	279	+1	+0.3%	-2	-5
Care, other	31	32	+1	+3.7%	-4	-6
Patient & Client Care	309	311	+2	+0.6%	-7	-11

St. John of God (IDS)

Oct 2020 (Dec 2019 figure: 456)	WTE Sep 2020	WTE Oct 2020	WTE change since Sep 20	% change since Sep 20	WTE change since Dec 19	WTE change since Oct 19
Overall	457	462	+6	+1.2%	+6	+16
Medical & Dental	1	1				
Nurse/ Midwife Manager	7	8	+1	+6.8%	+0	+0
Staff Nurse/ Staff Midwife	48	49	+0	+0.6%	+2	+3
Nursing & Midwifery	56	57	+1	+1.4%	+2	+3
Therapy Professions	11	12	+1	+8.9%	-0	+1
Social Care	153	154	+1	+0.6%	+8	+11
Social Workers	3	3			-1	+0
Psychologists	7	6	-1	-9.6%	+1	+0
Health & Social Care Professionals	174	175	+1	+0.7%	+8	+13
Management (VIII & above)	14	15	+0	+3.2%	-0	-0
Administrative/ Supervisory (V to VII)	26	27	+0	+1.1%	-2	-1
Clerical (III & IV)	19	19			-0	-0
Management & Administrative	59	60	+1	+1.3%	-2	-2
Support	12	12	+0	+1.7%	+0	-1
Maintenance/ Technical	5	5			+0	+1
General Support	17	17	+0	+1.2%	+0	-0
Health Care Assistants	16	18	+2	+10.9%	-1	-2
Care, other	134	135	+1	+0.7%	-2	+4
Patient & Client Care	150	152	+3	+1.8%	-3	+2

St. John of God, Kerry

Oct 2020 (Dec 2019 figure: 315)	WTE Sep 2020	WTE Oct 2020	WTE change since Sep 20	% change since Sep 20	WTE change since Dec 19	WTE change since Oct 19
Overall	323	319	-5	-1.5%	+3	+14
Nurse/ Midwife Manager	15	15	+0	+0.1%	-1	-0
Staff Nurse/ Staff Midwife	46	46	-0	-0.2%	-3	-1
Nursing & Midwifery	61	61	-0	-0.1%	-4	-2
Therapy Professions	4	4	-0	-1.0%	+0	+0
Social Care	47	47	-1	-1.5%	+1	+4
Social Workers	1	1				
Psychologists	1	1			-1	-1
Health & Social Care Professionals	53	52	-1	-1.5%	+1	+3
Management (VIII & above)	1	1				
Administrative/ Supervisory (V to VII)	7	7	+0	+0.1%	-0	-0
Clerical (III & IV)	9	9	-0	-2.2%	-1	-0
Management & Administrative	17	17	-0	-1.1%	-1	-1
General Support	30	30	+1	+2.4%	+1	+1
Health Care Assistants	120	114	-5	-4.5%	+9	+11
Care, other	43	44	+1	+2.1%	-2	+1
Patient & Client Care	163	158	-5	-2.8%	+7	+12

Oct 2020 (Dec 2019 figure: 787)	WTE Sep 2020	WTE Oct 2020	WTE change since Sep 20	% change since Sep 20	WTE change since Dec 19	WTE change since Oct 19
Overall	775	779	+4	+0.5%	-9	+24
Registrars	1	1				
Medical & Dental	1	1				
Nurse/ Midwife Manager	23	23	-0	-0.4%	+3	+3
Nurse/ Midwife Specialist & AN/MP	1	1				
Staff Nurse/ Staff Midwife	90	90	-0	-0.2%	-0	+7
Nursing & Midwifery	113	113	-0	-0.2%	+2	+10
Therapy Professions	16	16	-1	-3.9%	+1	+1
Social Care	256	258	+2	+0.7%	+5	+12
Social Workers	6	6	-0	-1.5%	-1	-1
Psychologists	7	7	-0	-1.9%	+1	+1
Health & Social Care Professionals	285	286	+1	+0.4%	+6	+12
Management (VIII & above)	6	5	-1	-15.6%	-1	-1
Administrative/ Supervisory (V to VII)	10	10	-0	-3.0%	-1	-1
Clerical (III & IV)	18	19	+1	+4.2%	+1	+1
Management & Administrative	34	33	-0	-1.3%	-2	-1
Support	28	29	+1	+3.7%	-6	-6
Maintenance/ Technical	14	14	+0	+1.4%	+2	+3
General Support	42	43	+1	+2.9%	-4	-4
Health Care Assistants	155	157	+2	+1.3%	-15	-5
Care, other	144	144	+0	+0.2%	+3	+12
Patient & Client Care	299	302	+2	+0.8%	-12	+7

St. Michael's House, Dublin

Oct 2020 (Dec 2019 figure: 1,431)	WTE Sep 2020	WTE Oct 2020	WTE change since Sep 20	% change since Sep 20	WTE change since Dec 19	WTE change since Oct 19
Overall	1,433	1,433	-0	-0.0%	+2	+30
Consultants	6	6			-2	-2
Registrars	1	1			-3	-3
Medical/ Dental, other	4	4				
Medical & Dental	11	11			-5	-5
Nurse/ Midwife Manager	86	86	+1	+0.8%	+3	+2
Staff Nurse/ Staff Midwife	155	160	+5	+2.9%	-2	+3
Nursing & Midwifery	241	246	+5	+2.2%	+0	+5
Therapy Professions	52	48	-4	-8.4%	-4	-1
Social Care	547	549	+2	+0.4%	+24	+40
Social Workers	20	20	+0	+1.2%	-0	-0
Psychologists	20	19	-0	-0.9%	+1	+2
H&SC, Other	9	9	+0	+0.5%	-1	-1
Health & Social Care Professionals	648	646	-2	-0.3%	+21	+41
Management (VIII & above)	21	20	-1	-4.8%	-2	-1
Administrative/ Supervisory (V to VII)	42	44	+2	+4.9%	+1	+2
Clerical (III & IV)	53	54	+1	+2.2%	+0	+2
Management & Administrative	115	118	+2	+1.9%	-0	+3
Support	46	47	+1	+1.5%	-49	-50
Maintenance/ Technical	12	12			-0	-0
General Support	59	59	+1	+1.2%	-49	-50
Health Care Assistants	335	329	-6	-1.9%	+35	+37
Care, other	24	24	+0	+0.9%	-0	-1
Patient & Client Care	360	353	-6	-1.7%	+35	+37

St. Patrick's, Kilkenny

Oct 2020 (Dec 2019 figure: 279)	WTE Sep 2020	WTE Oct 2020	WTE change since Sep 20	% change since Sep 20	WTE change since Dec 19	WTE change since Oct 19
Overall	289	287	-2	-0.6%	+8	-9
Nurse/ Midwife Manager	12	12	+0	+1.4%	+2	-1
Staff Nurse/ Staff Midwife	26	26	-0	-0.5%	+1	-2
Nursing & Midwifery	38	38	+0	+0.1%	+2	-3
Social Care	27	27	-0	-1.1%	-8	-9
Social Workers	1		-1	-100.0%	-2	-2
H&SC, Other	3	3	+0	+4.6%	+0	+0
Health & Social Care Professionals	31	30	-1	-3.7%	-9	-10
Executive Management	1	1			+1	+1
Management (VIII & above)	1	1			+1	+1
Administrative/ Supervisory (V to VII)	7	7	+0	+6.3%	+0	+0
Clerical (III & IV)	11	13	+1	+10.3%	-1	-2
Management & Administrative	19	21	+2	+8.4%	+0	-1
Support	3	3	-0	-0.4%	-4	-8
Maintenance/ Technical	3	3				
General Support	6	6	-0	-0.2%	-4	-8
Patient & Client Care	195	192	-2	-1.2%	+19	+13

Sunbeam House Services

Oct 2020 (Dec 2019 figure: 449)	WTE Sep 2020	WTE Oct 2020	WTE change since Sep 20	% change since Sep 20	WTE change since Dec 19	WTE change since Oct 19
Overall	440	445	+5	+1.1%	-5	+11
Nurse/ Midwife Manager	3	3			-1	-1
Staff Nurse/ Staff Midwife	33	33	+0	+0.3%	-4	-3
Nursing & Midwifery	36	36	+0	+0.3%	-5	-4
Therapy Professions	1	1	+0	+7.4%	+0	+0
Social Care	183	190	+8	+4.2%	+8	+16
Social Workers	1	2	+1	+100.0%		
Psychologists	2	1	-1	-50.0%	+0	+0
H&SC, Other				-100.0%	-1	-1
Health & Social Care Professionals	187	195	+8	+4.1%	+8	+16
Management (VIII & above)	9	9				-1
Administrative/ Supervisory (V to VII)	11	9	-2	-15.3%	+0	+0
Clerical (III & IV)	27	27	+0	+0.0%	+3	+3
Management & Administrative	47	45	-2	-3.4%	+4	+3
Support	12	9	-3	-26.5%	+4	-1
Maintenance/ Technical	1		-1	-100.0%	-2	-2
General Support	13	9	-4	-32.0%	+2	-3
Health Care Assistants	65	66	+2	+2.5%	-5	+6
Care, other	92	94	+1	+1.3%	-9	-6
Patient & Client Care	157	160	+3	+1.8%	-14	-1

Bros. of Charity, West Region

Oct 2020 (Dec 2019 figure: 1,288)	WTE Sep 2020	WTE Oct 2020	WTE change since Sep 20	% change since Sep 20	WTE change since Dec 19	WTE change since Oct 19
Overall	1,284	1,274	-10	-0.7%	-14	+5
Consultants	2	2				
Registrars	2	2				
Medical & Dental	4	4				
Nurse/ Midwife Manager	68	67	-0	-0.6%	+0	+2
Nurse/ Midwife Specialist & AN/MP	5	5	-0	-2.1%	-0	-0
Staff Nurse/ Staff Midwife	118	115	-2	-2.1%	-4	-5
<i>Pre-registration Nurse Intern (COVID-19)</i>	1	0	-1	-72.9%	+0	+0
Nursing/ Midwifery Student	1	0	-1	-72.9%	+0	+0
Nursing & Midwifery	191	188	-4	-1.9%	-4	-3
Therapy Professions	29	28	-1	-4.4%	-6	-5
Social Care	210	206	-4	-2.1%	+10	+4
Social Workers	25	26	+1	+4.0%	+0	+0
Psychologists	13	12	-1	-5.2%	-2	-2
H&SC, Other	14	14			-2	-1
Health & Social Care Professionals	292	286	-5	-1.9%	+1	-4
Management (VIII & above)	14	14			+1	+1
Administrative/ Supervisory (V to VII)	36	36	+1	+1.7%	+2	+2
Clerical (III & IV)	36	37	+1	+2.6%	+0	+1
Management & Administrative	86	87	+2	+1.8%	+3	+3
Support	42	42	-0	-0.7%	-3	-3
Maintenance/ Technical	5	4	-1	-13.7%	-1	-1
General Support	47	46	-1	-2.1%	-4	-3
Health Care Assistants	547	544	-3	-0.6%	-2	+13
Care, other	117	119	+2	+1.6%	-7	-1
Patient & Client Care	664	663	-1	-0.2%	-9	+12

Social Care Services Employment by Grade Group: Oct 2020

Oct 2020 (Dec 2019 figure: 31,535)	WTE Sep 2020	WTE Oct 2020	WTE change since Sep 20	% change since Sep 20	WTE change since Dec 19	WTE change since Oct 19
Overall	32,134	32,034	-100	-0.3%	+498	+608
Consultant Medicine	6	5	-1	-18.2%	+1	+1
Consultant Paediatrics	4	3	-1	-14.4%	-0	-0
Consultant Psychiatry	20	21	+1	+5.6%	+0	+0
Consultants	29	29	-0	-1.4%	+1	+1
Registrar	9	8	-1	-6.1%	-6	-4
Senior Registrar	4	4			+1	+1
Specialist Registrar	5	5			-1	-2
Registrars	18	17	-1	-3.0%	-6	-5
SHO/ Interns	22	23	+1	+5.8%	+1	+1
Medical/ Dental, other	123	114	-9	-7.3%	+3	+16
Medical & Dental	191	183	-9	-4.5%		+13
Clinical Nurse/ Midwife Manager	1,352	1,329	-23	-1.7%	+10	+6
Director Nursing/Midwifery, Assistant	151	146	-6	-3.7%	+2	-0
Director of Nursing/Midwifery	144	146	+2	+1.7%	+6	+9
Nurse/ Midwife Manager	1,647	1,621	-26	-1.6%	+18	+15
Advanced Nurse/ Midwife Practitioner	19	24	+4	+22.8%	+11	+12
Clinical Nurse/ Midwife Specialist	79	76	-3	-3.5%	+0	+2
Nurse/ Midwife Specialist & AN/MP	98	100	+2	+1.7%	+11	+14
Staff Midwives	1	1	+0	+3.9%	+1	+1
Staff Nurse [Intellectual Disability]	1,565	1,485	-80	-5.1%	-112	-93
Staff Nurse [Psychiatric]	66	75	+10	+15.0%	-13	-20
Staff Nurses [General/ Children's]	3,535	3,591	+56	+1.6%	+127	+157
Staff Nurse/ Staff Midwife	5,166	5,152	-14	-0.3%	+3	+45
Public Health Nurse	20	20	-0	-1.6%	+0	+2
Pre-registration Nurse/ Midwife Intern	1	7	+6	+832.0%	-21	-15
Pre-registration Nurse Intern (COVID-19)	95	47	-48	-50.9%	+47	+47
Post-registration Nurse/ Midwife Student	3	2	-1	-30.2%	+1	+1
Nursing/ Midwifery awaiting registration	15	14	-1	-5.6%	-1	+6
Nursing/ Midwifery Student	113	70	-44	-38.6%	+26	+38
Nursing Education/Clinical	26	47	+21	+79.7%	+25	+25
Other Nursing/ Midwifery	1	1				
Nursing/ Midwifery other	27	48	+21	+76.8%	+25	+25
Nursing & Midwifery	7,072	7,010	-62	-0.9%	+83	+139
Dietitians	40	35	-5	-12.0%	-0	-1
Occupational Therapists	385	386	+1	+0.2%	+9	+16
Physiotherapists	322	323	+1	+0.3%	+10	+6
Podiatrists & Chiropodists	12	11	-1	-4.5%	-1	-1
Speech & Language Therapists	326	330	+4	+1.3%	+14	+16
Therapy Professions	1,084	1,085	+1	+0.1%	+32	+35
Clinical Engineering	13	13			-0	-0
Clinical Measurement	2	2	-0	-9.3%	+1	+1
Medical Laboratory	4	4				
Phlebotomists				-100.0%	-1	-1
Radiographers	6	6	+0	+1.5%	-1	-1
Health Science/ Diagnostics	25	25	-0	-0.6%	-1	-0
Social Care	2,704	2,721	+16	+0.6%	+123	+162
Social Workers	318	322	+4	+1.2%	+5	+0
Psychologists	222	229	+7	+3.1%	+22	+25

Oct 2020 (Dec 2019 figure: 31,535)	WTE Sep 2020	WTE Oct 2020	WTE change since Sep 20	% change since Sep 20	WTE change since Dec 19	WTE change since Oct 19
Overall	32,134	32,034	-100	-0.3%	+498	+608
Pharmacy	25	25	-0	-0.3%	+3	+3
Counsellor Therapists	21	21	-0	-0.0%	+2	+3
Other Health & Social Care	50	49	-1	-2.5%	-2	-2
Play Therapists/ Specialists	13	13	-0	-2.8%	-4	-3
H&SC, Other	84	82	-2	-2.0%	-4	-3
Health & Social Care Professionals	4,462	4,488	+26	+0.6%	+180	+221
Executive Management	47	48	+1	+2.1%	+5	+8
Senior Management (VIII & GM)	228	231	+3	+1.2%	+20	+15
Management (VIII & above)	275	279	+4	+1.4%	+25	+22
Middle Management (V-VII)	660	668	+8	+1.2%	+40	+48
Other Administrative	15	15	-1	-3.3%	-1	-2
Administrative/ Supervisory (V to VII)	675	683	+7	+1.1%	+39	+46
Clerical (III & IV)	1,236	1,255	+18	+1.5%	+23	+33
Management & Administrative	2,187	2,216	+29	+1.3%	+87	+101
Catering	323	318	-5	-1.5%	-1	-2
Household Services	871	876	+5	+0.5%	-36	-51
Other Labs & Associated	1	1	-0	-31.0%		
Other Support	166	168	+1	+0.7%	-55	-55
Portering	105	105	-1	-0.6%	-4	-3
Support	1,468	1,468	-0	-0.0%	-96	-111
Maintenance	216	215	-1	-0.4%	+1	-2
Technical Services	9	9			+1	+2
Maintenance/ Technical	225	224	-1	-0.4%	+2	+0
General Support	1,693	1,692	-1	-0.1%	-94	-111
HCA, Nurse's Aide, etc.	11,305	11,135	-170	-1.5%	+296	+275
Health & Social Care Assistants	37	36	-1	-2.3%	+5	+5
Health Care Assistants	11,342	11,171	-171	-1.5%	+301	+279
Home Help	3,404	3,460	+57	+1.7%	-90	-115
Care, other	1,783	1,814	+31	+1.7%	+32	+80
Patient & Client Care	16,529	16,445	-84	-0.5%	+243	+244

Employment by WTE, Headcount, Gender, Full-Time /Part-Time etc.: Oct 2020

Social Care Services Staff Group	WTE	Headcount	WTE: no.	% Male	% female	Male WTE: no.	Female WTE: no.	% Total Perm	% Male Perm	% Female Perm	% Total Full Time	% Total Part Time	% Male FT	% Female FT
Overall	32,034	38,725	1.21	16.4%	83.6%	1.11	1.23	83.0%	83.5%	83.0%	57.3%	42.7%	73.8%	54.1%
Consultant Medicine	5	7	1.53	14.3%	85.7%	2.04	1.47	85.7%	85.7%	83.3%	28.6%	71.4%	0.0%	33.3%
Consultant Paediatrics	3	6	1.97	16.7%	83.3%	1.82	2.01	66.7%	66.7%	80.0%	33.3%	66.7%	100.0%	20.0%
Consultant Psychiatry	21	28	1.34	28.6%	71.4%	1.28	1.36	78.6%	78.6%	75.0%	60.7%	39.3%	75.0%	55.0%
Consultants	29	41	1.44	24.4%	75.6%	1.37	1.46	78.0%	80.0%	77.4%	51.2%	48.8%	70.0%	45.2%
Registrar	8	9	1.13	55.6%	44.4%	1.11	1.14	22.2%	22.2%	0.0%	88.9%	11.1%	100.0%	75.0%
Senior Registrar	4	4	1.00		100.0%		1.00	25.0%	25.0%	25.0%	100.0%	0.0%		100.0%
Specialist Registrar	5	5	1.00	60.0%	40.0%	1.00	1.00	0.0%	0.0%	0.0%	100.0%	0.0%	100.0%	100.0%
Registrars	17	18	1.06	44.4%	55.6%	1.07	1.05	16.7%	25.0%	10.0%	94.4%	5.6%	100.0%	90.0%
SHO/ Interns	23	27	1.16	33.3%	66.7%	1.16	1.16	0.0%	0.0%	0.0%	100.0%	0.0%	100.0%	100.0%
Medical/ Dental, other	114	186	1.63	62.4%	37.6%	1.69	1.54	56.5%	57.8%	54.3%	35.5%	64.5%	32.8%	40.0%
Medical & Dental	183	272	1.49	52.6%	47.4%	1.57	1.41	51.5%	53.8%	48.8%	48.2%	51.8%	43.4%	53.5%
Clinical Nurse/ Midwife Manager	1,329	1,427	1.07	10.7%	89.3%	1.02	1.08	95.9%	95.9%	96.1%	80.1%	19.9%	96.1%	78.2%
Director Nursing/Midwifery, Assistant	146	153	1.05	7.8%	92.2%	1.00	1.06	97.4%	97.4%	97.2%	90.8%	9.2%	100.0%	90.1%
Director of Nursing/Midwifery	146	148	1.01	6.1%	93.9%	1.00	1.01	98.0%	98.0%	97.8%	97.3%	2.7%	100.0%	97.1%
Nurse/ Midwife Manager	1,621	1,728	1.07	10.0%	90.0%	1.01	1.07	96.2%	94.8%	96.3%	82.5%	17.5%	96.5%	81.0%
Advanced Nurse/ Midwife Practitioner	24	25	1.05	20.0%	80.0%	1.00	1.06	100.0%	100.0%	100.0%	96.0%	4.0%	100.0%	95.0%
Clinical Nurse/ Midwife Specialist	76	88	1.16	3.4%	96.6%	1.00	1.17	97.7%	97.7%	97.6%	56.8%	43.2%	100.0%	55.3%
Nurse/ Midwife Specialist & AN/MP	100	113	1.13	7.1%	92.9%	1.00	1.14	98.2%	100.0%	98.1%	65.5%	34.5%	100.0%	62.9%
Staff Midwives	1	1	1.27		100.0%		1.27	100.0%	100.0%	100.0%	0.0%	100.0%		0.0%
Staff Nurse [Intellectual Disability]	1,485	1,737	1.17	8.1%	91.9%	1.07	1.18	94.6%	94.6%	94.5%	62.0%	38.0%	83.0%	60.2%
Staff Nurse [Psychiatric]	75	96	1.27	18.8%	81.3%	1.28	1.27	69.8%	69.8%	73.1%	61.5%	38.5%	55.6%	62.8%
Staff Nurses [General/ Children's]	3,591	4,213	1.17	8.4%	91.6%	1.06	1.19	91.2%	91.2%	91.5%	62.4%	37.6%	89.3%	59.9%
Staff Nurse/ Staff Midwife	5,152	6,047	1.17	8.5%	91.5%	1.07	1.18	91.9%	89.1%	92.1%	62.2%	37.8%	86.4%	60.0%
Public Health Nurse	20	23	1.17	4.3%	95.7%	1.00	1.17	100.0%	100.0%	100.0%	60.9%	39.1%	100.0%	59.1%
Nursing/ Midwifery Student	70	83	1.19	6.0%	94.0%	1.11	1.20	4.8%	0.0%	5.1%	89.2%	10.8%	100.0%	88.5%
Nursing Education/Clinical	47	52	1.11	9.6%	90.4%	1.00	1.12	73.1%	73.1%	78.7%	84.6%	15.4%	100.0%	83.0%
Other Nursing/ Midwifery	1	1	1.00	100.0%		1.00		100.0%	100.0%		100.0%	0.0%	100.0%	

Nursing/ Midwifery other	48	53	1.10	11.3%	88.7%	1.00	1.12	73.6%	33.3%	78.7%	84.9%	15.1%	100.0%	83.0%
Nursing & Midwifery	7,010	8,047	1.15	8.8%	91.2%	1.05	1.16	91.9%	89.5%	92.1%	67.1%	32.9%	89.3%	64.9%
Dietitians	35	47	1.35	2.1%	97.9%	1.00	1.36	83.0%	83.0%	82.6%	53.2%	46.8%	100.0%	52.2%
Occupational Therapists	386	445	1.15	6.5%	93.5%	1.06	1.16	89.9%	89.9%	89.7%	76.4%	23.6%	89.7%	75.5%
Physiotherapists	323	377	1.17	16.2%	83.8%	1.03	1.20	91.2%	91.2%	90.8%	69.5%	30.5%	93.4%	64.9%
Podiatrists & Chiropodists	11	17	1.53	23.5%	76.5%	1.14	1.71	58.8%	58.8%	61.5%	58.8%	41.2%	75.0%	53.8%
Speech & Language Therapists	330	386	1.17	1.8%	98.2%	1.08	1.17	92.2%	92.2%	92.1%	74.1%	25.9%	85.7%	73.9%
Therapy Professions	1,085	1,272	1.17	8.0%	92.0%	1.04	1.19	90.3%	92.2%	90.2%	72.6%	27.4%	91.2%	70.9%
Clinical Engineering	13	13	1.00	84.6%	15.4%	1.00	1.00	84.6%	84.6%	50.0%	92.3%	7.7%	90.9%	100.0%
Clinical Measurement	2	3	1.33	66.7%	33.3%	1.00	4.00	66.7%	66.7%	0.0%	66.7%	33.3%	100.0%	0.0%
Medical Laboratory	4	4	1.00	75.0%	25.0%	1.00	1.00	75.0%	75.0%	0.0%	100.0%	0.0%	100.0%	100.0%
Radiographers	6	10	1.68	10.0%	90.0%	2.00	1.65	90.0%	90.0%	88.9%	20.0%	80.0%	0.0%	22.2%
Health Science/ Diagnostics	25	30	1.19	56.7%	43.3%	1.03	1.49	83.3%	94.1%	69.2%	66.7%	33.3%	88.2%	38.5%
Social Care	2,721	3,205	1.18	15.6%	84.4%	1.09	1.20	89.9%	90.6%	89.8%	49.3%	50.7%	63.9%	46.6%
Social Workers	322	375	1.17	15.7%	84.3%	1.06	1.19	91.7%	88.1%	92.4%	73.9%	26.1%	88.1%	71.2%
Psychologists	229	261	1.14	19.5%	80.5%	1.05	1.16	91.6%	90.2%	91.9%	73.9%	26.1%	86.3%	71.0%
Pharmacy	25	35	1.40	17.1%	82.9%	1.28	1.43	74.3%	100.0%	69.0%	48.6%	51.4%	66.7%	44.8%
Counsellor Therapists	21	25	1.21	8.0%	92.0%	1.00	1.23	100.0%	100.0%	100.0%	56.0%	44.0%	100.0%	52.2%
Other Health & Social Care	49	63	1.29	17.5%	82.5%	1.11	1.34	88.9%	88.9%	90.4%	47.6%	52.4%	72.7%	42.3%
Play Therapists/ Specialists	13	16	1.26	25.0%	75.0%	1.00	1.38	100.0%	100.0%	100.0%	56.3%	43.8%	100.0%	41.7%
H&SC, Other	82	104	1.27	16.3%	83.7%	1.07	1.32	93.3%	88.2%	94.3%	51.0%	49.0%	82.4%	44.8%
Health & Social Care	4,488	5,282	1.18	14.3%	85.7%	1.08	1.20	90.1%	90.7%	90.0%	58.0%	42.0%	72.0%	55.7%
Executive Management	48	48	1.00	43.8%	56.3%	1.00	1.00	93.8%	93.8%	92.6%	100.0%	0.0%	100.0%	100.0%
Senior Management (VIII & GM)	231	239	1.03	29.7%	70.3%	1.03	1.04	94.6%	94.6%	95.8%	95.0%	5.0%	94.4%	95.2%
Management (VIII & above)	279	287	1.03	32.1%	67.9%	1.02	1.03	94.4%	92.4%	95.4%	95.8%	4.2%	95.7%	95.9%
Middle Management (V-VII)	668	721	1.08	20.7%	79.3%	1.03	1.09	93.2%	93.2%	93.9%	80.7%	19.3%	93.3%	77.4%
Other Administrative	15	15	1.01	13.3%	86.7%	1.00	1.01	100.0%	100.0%	100.0%	93.3%	6.7%	100.0%	92.3%
Administrative/ Supervisory (V to VII)	683	736	1.08	20.5%	79.5%	1.03	1.09	93.3%	90.7%	94.0%	81.0%	19.0%	93.4%	77.8%
Clerical (III & IV)	1,255	1,496	1.19	8.5%	91.5%	1.10	1.20	85.8%	78.0%	86.6%	60.0%	40.0%	78.7%	58.2%
Management & Administrative	2,216	2,519	1.14	14.7%	85.3%	1.05	1.15	89.0%	86.8%	89.4%	70.2%	29.8%	88.9%	67.0%
Catering	318	367	1.15	31.9%	68.1%	1.09	1.18	94.3%	94.3%	95.6%	67.8%	32.2%	91.5%	56.8%
Household Services	876	1,121	1.28	16.2%	83.8%	1.21	1.29	85.5%	85.5%	87.6%	46.2%	53.8%	69.2%	41.7%
Other Labs & Associated	1	1	1.00		100.0%		1.00	100.0%	100.0%	100.0%	100.0%	0.0%		100.0%
Other Support	168	262	1.56	50.8%	49.2%	1.30	1.98	91.2%	91.2%	96.9%	34.0%	66.0%	54.1%	13.2%
Portering	105	118	1.13	98.3%	1.7%	1.12	1.30	83.9%	83.9%	100.0%	78.8%	21.2%	79.3%	50.0%

Support	1,468	1,869	1.27	29.3%	70.7%	1.18	1.31	87.9%	82.7%	90.1%	50.8%	49.2%	72.4%	41.9%
Maintenance	215	233	1.08	95.7%	4.3%	1.07	1.29	93.1%	93.1%	100.0%	82.8%	17.2%	85.2%	30.0%
Technical Services	9	9	0.99	66.7%	33.3%	0.98	1.00	100.0%	100.0%	100.0%	100.0%	0.0%	100.0%	100.0%
Maintenance/ Technical	224	242	1.08	94.6%	5.4%	1.07	1.21	93.4%	93.0%	100.0%	83.5%	16.5%	85.6%	46.2%
General Support	1,692	2,111	1.25	36.8%	63.2%	1.15	1.31	88.5%	85.7%	90.2%	54.6%	45.4%	76.3%	41.9%
HCA, Nurse's Aide, etc.	11,135	13,076	1.17	21.7%	78.3%	1.09	1.20	83.8%	83.8%	83.7%	55.7%	44.3%	71.1%	51.4%
Health & Social Care Assistants	36	43	1.20	20.9%	79.1%	1.09	1.23	86.0%	86.0%	82.4%	72.1%	27.9%	100.0%	64.7%
Health Care Assistants	11,171	13,119	1.17	21.7%	78.3%	1.09	1.20	83.8%	84.3%	83.7%	55.7%	44.3%	71.2%	51.4%
Home Help	3,460	5,206	1.50	3.4%	96.6%	1.50	1.50	54.9%	25.8%	55.9%	39.6%	60.4%	53.4%	39.1%
Care, other	1,814	2,169	1.20	26.4%	73.6%	1.18	1.20	87.7%	83.1%	89.3%	60.6%	39.4%	70.3%	57.1%
Patient & Client Care	16,445	20,494	1.25	17.6%	82.4%	1.12	1.28	76.9%	81.2%	75.9%	52.1%	47.9%	70.2%	48.3%

Employment by WTE, Headcount, Gender, Full-Time /Part-Time etc.: Oct 2020

Social Care Services CHO	WTE	Headcount	WTE: no.	% Male	% female	Male WTE: no.	Female WTE: no.	% Total Perm	% Male Perm	% Female Perm	% Total Full Time	% Total Part Time	% Male FT	% Female FT
Overall	32,034	38,725	1.21	16.4%	83.6%	1.11	1.23	83.0%	83.5%	83.0%	57.3%	42.7%	73.8%	54.1%
CHO 1	3,407	3,998	1.17	16.0%	84.0%	1.10	1.19	79.9%	79.9%	78.9%	57.6%	42.4%	80.4%	53.3%
HSE	1,795	2,132	1.19	13.5%	86.5%	1.04	1.21	90.0%	90.0%	90.5%	50.4%	49.6%	89.2%	89.2%
Section 38	1,274	1,628	1.28	22.8%	77.2%	1.24	1.29	80.2%	80.2%	79.6%	37.3%	62.7%	42.3%	42.3%
CHO 2	3,069	3,760	1.23	17.5%	82.5%	1.15	1.24	85.7%	85.7%	86.1%	44.7%	55.3%	62.8%	40.9%
HSE	1,164	1,524	1.31	12.4%	87.6%	1.07	1.35	93.0%	93.0%	94.1%	50.3%	49.7%	87.3%	87.3%
Section 38	1,765	2,104	1.19	12.2%	87.8%	1.17	1.19	83.7%	83.7%	84.1%	38.4%	61.6%	39.1%	39.1%
CHO 3	2,930	3,628	1.24	12.3%	87.7%	1.12	1.26	87.6%	87.6%	88.3%	43.4%	56.6%	59.6%	41.1%
HSE	3,224	4,194	1.30	12.1%	87.9%	1.14	1.33	67.6%	67.6%	69.2%	75.2%	24.8%	87.0%	87.0%
Section 38	2,245	2,711	1.21	19.2%	80.8%	1.14	1.22	85.1%	85.1%	86.4%	62.6%	37.4%	68.7%	68.7%
CHO 4	5,469	6,905	1.26	14.9%	85.1%	1.14	1.29	74.5%	74.5%	75.6%	70.2%	29.8%	77.7%	68.9%
HSE	2,070	2,494	1.20	10.0%	90.0%	1.10	1.22	63.9%	63.9%	62.0%	50.8%	49.2%	82.3%	82.3%
Section 38	1,140	1,329	1.17	20.8%	79.2%	1.10	1.18	84.7%	84.7%	84.3%	46.7%	53.3%	61.0%	61.0%
CHO 5	3,210	3,823	1.19	13.8%	86.2%	1.10	1.21	71.1%	71.1%	69.2%	49.4%	50.6%	71.1%	45.9%
HSE	574	636	1.11	21.4%	78.6%	1.04	1.13	81.0%	81.0%	83.6%	75.3%	24.7%	89.0%	89.0%
Section 38	1,441	1,652	1.15	23.4%	76.6%	1.12	1.16	94.0%	94.0%	93.5%	69.5%	30.5%	79.8%	79.8%
CHO 6	2,014	2,288	1.14	22.9%	77.1%	1.10	1.15	90.4%	90.4%	90.7%	71.1%	28.9%	82.2%	67.8%
HSE	1,155	1,419	1.23	15.3%	84.7%	1.15	1.24	87.4%	87.4%	88.2%	63.8%	36.2%	79.7%	79.7%
Section 38	2,898	3,387	1.17	23.6%	76.4%	1.08	1.20	89.6%	89.6%	89.8%	68.0%	32.0%	81.9%	81.9%
CHO 7	4,054	4,806	1.19	21.1%	78.9%	1.10	1.21	89.0%	89.0%	89.3%	66.8%	33.2%	81.4%	62.9%
HSE	2,083	2,621	1.26	12.6%	87.4%	1.15	1.28	82.6%	82.6%	82.1%	51.1%	48.9%	77.3%	77.3%
Section 38	1,565	1,883	1.20	20.9%	79.1%	1.12	1.23	96.5%	96.5%	96.7%	40.4%	59.6%	50.1%	50.1%
CHO 8	3,648	4,504	1.23	16.1%	83.9%	1.13	1.26	88.4%	88.4%	87.9%	46.6%	53.4%	62.5%	43.6%
HSE	1,117	1,270	1.14	25.6%	74.4%	1.07	1.16	86.1%	86.1%	87.3%	77.6%	22.4%	88.6%	88.6%
Section 38	3,044	3,664	1.20	12.2%	87.8%	1.11	1.22	87.7%	87.7%	87.7%	52.2%	47.8%	68.0%	68.0%
CHO 9	4,161	4,934	1.19	15.6%	84.4%	1.09	1.20	87.3%	87.3%	87.6%	58.7%	41.3%	76.7%	55.4%
other Community Services	72	79	1.10	26.6%	73.4%	1.05	1.12	79.7%	79.7%	79.3%	84.8%	15.2%	90.5%	82.8%

Summary Staff Movement: October 2020

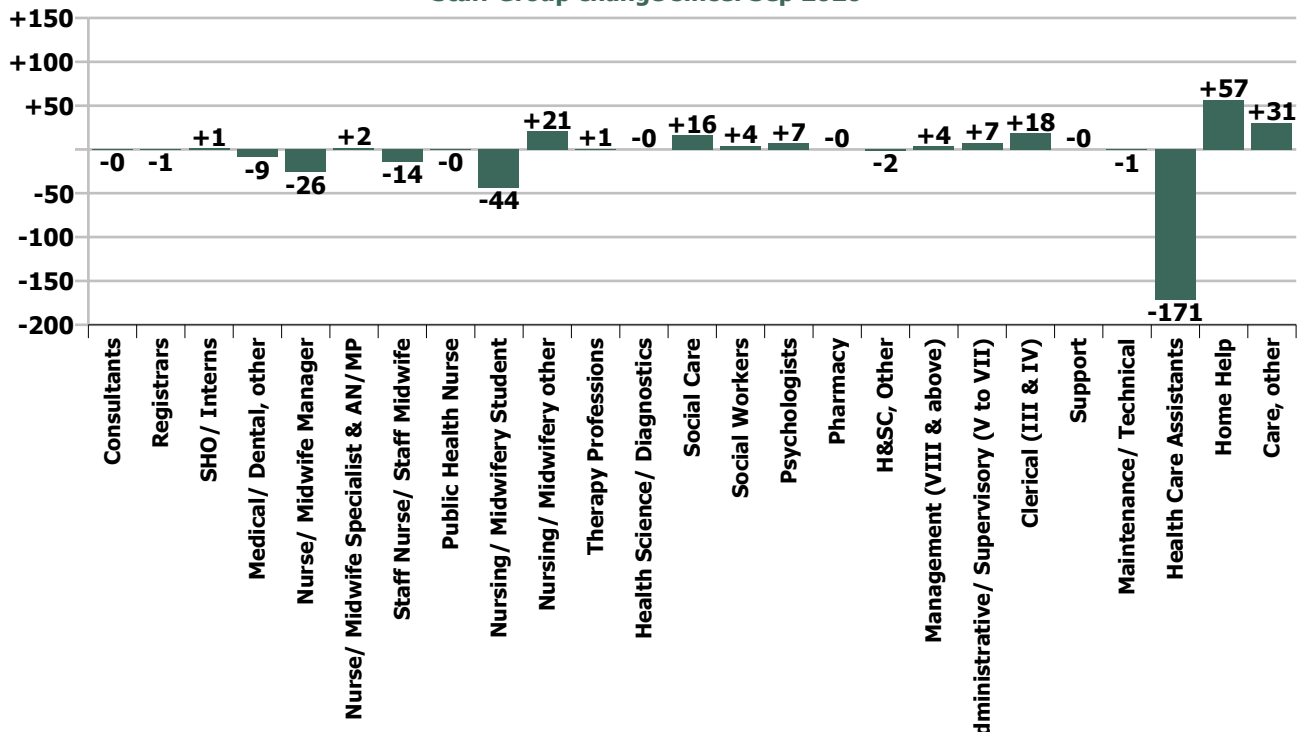
Month-on-month
Summary

	% change since Sep 20	overall	Consultants	Registrars	SHO/ Interns	Medical/ Dental, other	Medical & Dental	Nurse/ Midwife Manager	Nurse/ Midwife Specialist & AN/MP	Staff Nurse/ Staff Midwife	Public Health Nurse	Nursing/ Midwifery Student	Nursing/ Midwifery other	Nursing & Midwifery	Therapy Professions	Health Science/ Diagnostics	Social Care	Social Workers	Psychologists	Pharmacy	H&SC, Other	Health & Social Care Professionals	Management (VIII & above)	Administrative Supervisory (V to VII)	Clerical (III & IV)	Management & Administrative	Support	Maintenance/ Technical	General Support	Health Care Assistants	Home Help	Care, other	Patient & Client Care	
Overall	-0.3%	-100	-0.4	-0.5	+1.3	-9.0	-8.7	-26.1	+1.6	-14.2	-0.3	-43.7	+20.8	-61.8	+0.8	-0.1	+16.2	+3.9	+7.0	-0.1	-1.6	+26.0	+3.8	+7.3	+18.3	+29.4	-0.1	-0.9	-1.1	-171.2	+56.7	+30.7	-83.8	
CHO 1	-0.9%	-29				+0.0	0.0	+1.3	+0.4	+0.8		-5.5	-0.1	-3.1	+5.5	+0.1	-0.1	-1.1	+1.1		-0.2	+5.4	+1.5	+0.3	+3.2	+5.0	+0.2	+0.5	+0.8	-40.5	+2.1	+0.9	-37.5	
Disabilities	-0.5%	-7						-0.6	-0.1	-3.9		-0.6		-5.2	-1.5		-4.6	+1.0	-0.7			-5.7	+1.0	+1.0	+0.9	+3.0	-0.3	-0.8	-1.0	-1.5		+3.6	+2.1	
Older People	-0.7%	-12						+0.1		+0.9				+1.0	-0.1			+0.1			+0.0		-0.0	+0.6	+1.3	+1.9	+0.7	+0.9	+1.5	-23.4	+7.6	-0.2	-16.0	
CHO 2	-0.6%	-18					0.0	-0.5	-0.1	-3.0		-0.6		-4.3	-1.6		-4.6	+1.1	-0.7	+0.0		-5.7	+1.0	+1.6	+2.3	+4.9	+0.4	+0.1	+0.5	-24.8	+7.6	+3.4	-13.9	
Disabilities	+0.2%	+4	+0.1				+0.1	-1.8		+5.2		+0.6		+4.0	-0.3		+1.8	-0.0	-0.2		-1.1	+0.2	+0.2	-1.0	-0.8	+0.5	-0.2	+0.4	-4.4		+4.7	+0.3		
Older People	-0.4%	-4				+1.4	+1.4	+2.4	+0.0	+0.6				+3.1	+1.5	-0.2		+0.3				+1.6	-0.1	+0.8	-1.3	-0.6	+0.4	+0.0	+0.4	-8.4	-1.2	-0.7	-10.3	
CHO 3	-0.0%	-0	+0.1			+1.4	+1.5	+0.6	+0.0	+5.8		+0.6		+7.1	+1.2	-0.2	+1.8	+0.3	-0.2		-1.1	+1.7	-0.1	+1.0	-2.3	-1.4	+1.0	-0.2	+0.8	-12.8	-1.2	+4.0	-10.1	
Disabilities	+1.4%	+36	+0.5				+0.5	+1.0	+1.0	-5.4		-1.9	-0.5	-5.8	-4.1		+10.0	+0.7	+0.2		-0.7	+6.1	+0.0	+1.1	+0.6	+1.7	+4.3	+0.9	+5.2	+20.5		+7.2	+27.8	
Older People	-0.9%	-28	-1.0			-5.6	-6.6	-6.7	+0.1	-8.0	+0.1			-14.5	-2.2		+0.0	-1.0			-0.7	-3.9	+1.0	-2.4	+11.2	+9.9	-3.3	-1.0	-4.3	-22.0	+21.1	-7.4	-8.3	
CHO 4	+0.1%	+8	-0.5			-5.6	-6.1	-5.8	+1.1	-13.3	+0.1	-1.9	-0.5	-20.2	-6.3		+10.0	-0.4	+0.2	-0.7	-0.7	+2.2	+1.1	-1.3	+11.8	+11.6	+1.0	-0.1	+0.9	-1.4	+21.1	-0.2	+19.5	
Disabilities	+2.2%	+32				-1.0	-1.0	-2.1	+0.0	+1.0	-1.0	-1.8		-3.8	+7.2		-5.0	+1.2	+6.0		-0.1	+9.3	+0.0	+2.8	+3.0	+5.8	-0.1		-0.1	+1.9	+10.3	+9.9	+22.1	
Older People	-0.9%	-14				-3.8	-3.8	+1.2	+1.9	-7.2				-4.1	-0.3			+0.0			-0.0	-0.4	+0.1	+0.8	+0.3	+1.2	+0.4	-0.3	+0.0	-25.5	+19.1	-0.9	-7.3	
CHO 5	+0.6%	+18				-4.8	-4.8	-0.9	+2.0	-6.2	-1.0	-1.8		-7.9	+6.8		-5.0	+1.2	+6.0	-0.0	-0.1	+6.9	+0.1	+3.5	+3.3	+7.0	+0.3	-0.3	-0.1	-23.5	+29.3	+9.0	+14.8	
Disabilities	+1.3%	+15					+0.2			-0.6				-0.4	+2.0		+8.5	+1.0	-1.6		+0.3	+10.1	+0.4	-0.2	+0.1	+0.3	-2.1	-1.0	-3.1	+4.4		+3.8	+8.2	
Older People	-1.1%	-9					-0.4			-0.7				-1.0	+1.0			-0.2	-0.6	+0.0		+0.2		-1.0	+0.1	-0.9	-1.8		-1.8	-5.6		-0.1	-5.7	
CHO 6	+0.3%	+6					0.0	-0.2		-1.3				-1.5	+3.0		+8.5	+0.8	-2.3	+0.0	+0.3	+10.4	+0.4	-1.2	+0.2	-0.6	-4.0	-1.0	-5.0	-1.1		+3.7	+2.5	
Disabilities	-1.3%	-41		-0.5	+0.2		-0.3	-5.9	-0.6	-6.3			-11.0	-23.9	-10.9		+4.1	-0.8	+0.6	+0.1		-6.9	+1.2	-1.7	+0.2	-0.4	-3.8	-0.1	-3.9	-8.3	-0.4	+3.5	-5.2	
Older People	-1.1%	-11					-0.6	+0.2	+1.2			-1.0		-0.2	-0.2			+0.0				-0.2	+0.4	+1.1	+2.0	+3.5	+2.3	+2.3	-17.4	+1.0		-16.4		
CHO 7	-1.3%	-52		-0.5	+0.2		-0.3	-6.6	-0.4	-5.2		-12.0		-24.1	-11.2		+4.1	-0.8	+0.6	+0.1		-7.1	+1.6	-0.7	+2.2	+3.1	-1.5	-0.1	-1.6	-25.7	+0.6	+3.5	-21.6	
Disabilities	+0.3%	+6						-18.2	-2.8	+8.8			-16.2	+21.5	-6.9	+4.1		-0.1	+0.2	+1.7		+0.1	+6.0	-1.0	+1.3	-0.7	-0.4	-0.6		-0.6	+5.2	+0.4	+2.7	+8.3
Older People	-2.3%	-35				-0.1	-0.1	+0.3	+0.3	-2.5	+0.5			-1.4	+0.9			+0.9			+0.5	+2.3	-0.0	+0.3	-1.4	-1.1	-0.6	+0.1	-0.5	-31.3	-3.2	+0.3	-34.2	
CHO 8	-0.8%	-29				-0.1	-0.1	-17.9	-2.5	+6.3	+0.5	-16.2	+21.5	-8.3	+6.0		-0.1	+1.1	+1.7	+0.5	+0.1	+8.3	-1.0	+1.6	-2.0	-1.4	-1.2	+0.1	-1.1	-26.1	-2.8	+3.0	-25.9	
Disabilities	+0.4%	+14			+1.0		+1.0	+2.8	+0.2	+7.0		-6.4		+3.7	-0.1		+1.7	+1.6	+0.5		-0.3	+3.5	-1.0	+3.6	+0.7	+3.3	+3.3	+0.0	+3.3	-4.6		+3.3	-1.2	
Older People	-1.7%	-16			+0.0		+0.0	+0.9	+1.0	-5.1				-3.3	-1.6		-0.1	-0.0			+0.1	-1.5		+0.0	-1.0	-1.0	+0.4		+0.4	-10.5		+0.0	-10.5	
CHO 9	-0.1%	-2	-0.0		+1.0		+1.0	+3.7	+1.2	+1.8		-6.4		+0.4	-1.6		+1.5	+1.6	+0.5		-0.1	+2.0	-1.0	+3.6	-0.4	+2.3	+3.7		+3.7	-15.1		+3.4	-11.7	
Disabilities																																		
Older People	-1.6%	-1																					+0.0	-1.3	+0.1	-1.1								
other Community Services	-1.5%	-1																					+0.0	-1.3	+0.1	-1.1							0.0	
		-0.3%	-1.4%	-3.0%	+5.8%	-7.3%	-4.5%	-1.6%	+1.7%	-0.3%	-1.6%	-38.6%	+76.8%	-0.9%	+0.1%	-0.6%	+0.6%	+1.2%	+3.1%	-0.3%	-2.0%	+0.6%	+1.4%	+1.1%	+1.5%	+1.3%	-0.0%	-0.4%	-0.1%	-1.5%	+1.7%	+1.7%	-0.5%	

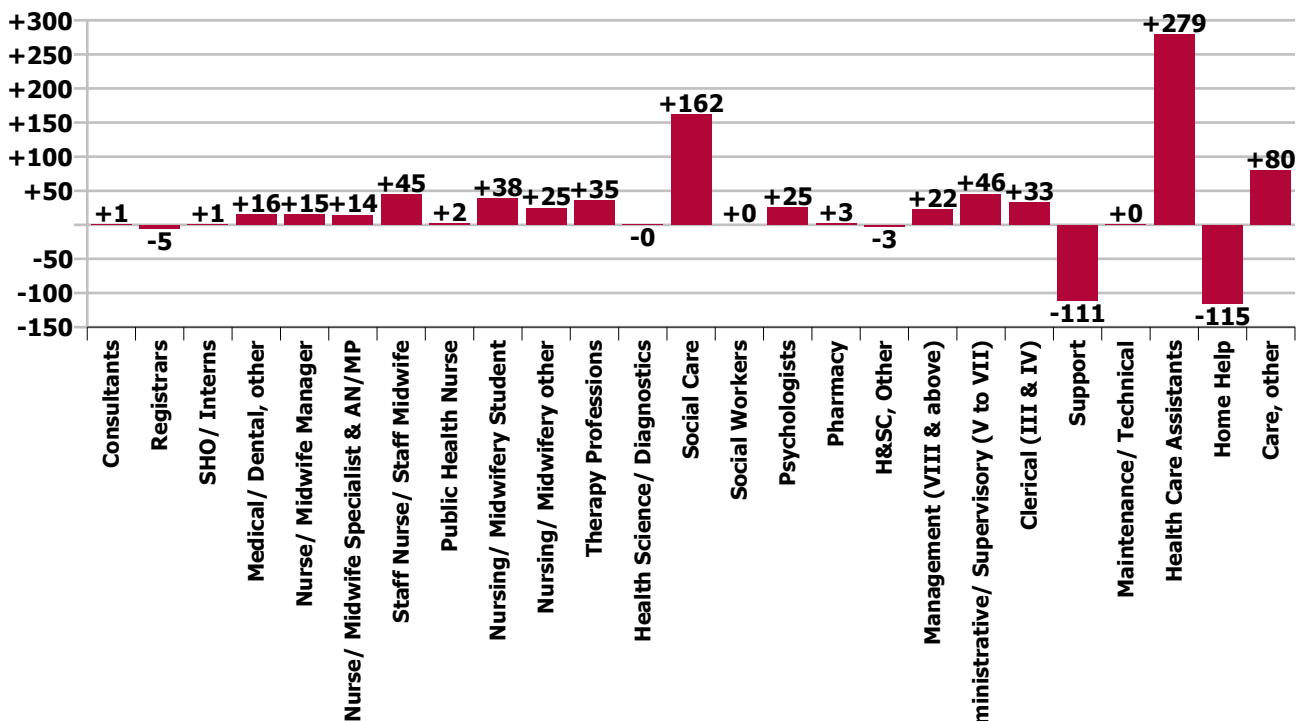
Year-on-year Summary

WTE change since Oct 19	% change since Oct 19	overall	Consultants	Registrars	SHO/ Interns	Medical/ Dental, other	Medical & Dental	Nurse/ Midwife Manager	Nurse/ Midwife Specialist & AN/MP	Staff Nurse/ Staff Midwife	Public Health Nurse	Nursing/ Midwifery Student	Nursing/ Midwifery other	Nursing & Midwifery	Therapy Professions	Health Science/ Diagnostics	Social Care	Social Workers	Psychologists	Pharmacy	H&SC, Other	Health & Social Care Professionals	Management (VIII & above)	Administrative Supervisory (V to VII)	Clerical (III & IV)	Management & Administrative	Support	Maintenance/ Technical	General Support	Health Care Assistants	Home Help	Care, other	Patient & Client Care
Overall	+1.9%	+608	+1	-5	+1	+16	+13	+15	+14	+45	+2	+38	+25	+139	+35	-0	+162	+0	+25	+3	-3	+221	+22	+46	+33	+101	-111	+0	-111	+279	-115	+80	+244
Disabilities	+3.9%	+58						+12	+3	-9		+17	+0	+23	+2		+1	+3	+6		-3	+9	-0	+7	+4	+11	+2	-1	+1	+6	+1	+7	+14
Older People	-1.5%	-28				+1	+1	-3	+3	+3			+1	+4	+3	+0			-2			+1	+1	-0	+1	+1	+6	-1	-7	+16	-44	-0	-29
CHO 1	+0.9%	+30				+1	+1	+9	+6	-6		+17	+1	+27	+5	+0	+1	+1	+6		-3	+10	+1	+7	+4	+13	-4	-2	-6	+22	-43	+7	-14
Disabilities	+0.7%	+10						+1	-0	-6		+0		-5	-6		+9	-1	-2		-1	-0	+2	+1	+0	+4	-3	-1	-4	+12		+3	+15
Older People	+0.9%	+15				-0	-0	+9		+9	+0			+18	+2	-0		+1				+3		+3	-5	-2	-3	+1	-2	+10	-15	+4	-2
CHO 2	+0.8%	+25				-0	-0	+10	-0	+2	+0	+0		+13	-5	-0	+9	+1	-2		-1	+3	+2	+4	-5	+1	-5	+0	-5	+22	-15	+7	+13
Disabilities	+5.2%	+94	+1				+1	+1	+1	+11		+3		+15	+3	+2	+26	-2	+4			+33	+1	+3	+1	+5	+2	+3	+5	+31		+5	+36
Older People	+7.4%	+71				+1	+1	+4	+1	-6				-1	+4	+0		-1				+3	+1	+4	+0	+5	-1	-1	-2	+16	+46	+3	+65
CHO 3	+6.0%	+165	+1			+1	+2	+5	+2	+5		+3		+14	+7	+2	+26	-3	+4		+0	+36	+2	+7	+1	+10	+0	+2	+3	+47	+46	+8	+101
Disabilities	+5.1%	+123	+1			+1	+2	-1	+1	-9		+10	-1	+2	-5		+14	-0	+3		+2	+14	+1	+6	+6	+13	+7	+1	+8	+56		+30	+85
Older People	-1.6%	-48	-0			+8	+8	-3	+3	+7	+2	-1		+8	+1	+1	+0	+1			+1	+4	+1	-2	+2	+1	+9	+9	-9	-73	+3	-79	
CHO 4	+1.4%	+75	+1			+9	+10	-4	+4	-1	+2	+9	-1	+10	-4	+1	+14	+0	+3	+1	+2	+17	+2	+4	+8	+15	+16	+1	+17	+47	-73	+33	+7
Disabilities	+3.3%	+48	-0				-0	+1	+1	+1	+1	+3		+5	-0		-7	+1	+5		-0	-1	+1	+2	-1	+1	-7		+45	-3	+9	+50	
Older People	+0.3%	+6				+6	+6	+2	+2	-0	-1			+3	-8			+0				-7		+3	-0	+3	-39	-3	-43	+62	-15	-3	+43
CHO 5	+1.7%	+54	-0			+6	+6	+3	+2	+1	-1	+3		+8	-8		-7	+1	+5	+1	-0	-8	+1	+5	-2	+4	-46	-3	-49	+106	-18	+6	+94
Disabilities	+2.7%	+31					+1	+1		-4				-3	-1	+26	-2	-0			-0	+22	+0	+1	+4	+5	-2	-1	-3	+9		+1	+10
Older People	-1.6%	-13								+6				+3	-4		-2	-1	-0			-6	+1	-3	+3	+0	-8	+1	-6	-2		-1	-4
CHO 6	+0.9%	+18					-2	-2		+2				+0	-5		+26	-4	-1	-0	-0	+16	+1	-2	+7	+6	-10	+0	-10	+7		-1	+6
Disabilities	+3.5%	+101		-0	+0		-0	-7	-1	+9			+1	+2	+16		+19	+2	+3	-0		+41	+7	+4	+7	+18	-15	+4	-11	+38	-1	+14	+51
Older People	+1.9%	+20				-1	-1	+10	+1	+20		+2		+32	-3			-2				-5	+2	+1	+5	+8	+3	+3	-32	+14	+0	+18	
CHO 7	+3.1%	+121		-0	+0	-1	-1	+3	+0	+29		+2	+1	+35	+13		+19	+1	+3	-0		+36	+9	+5	+13	+26	-13	+4	-9	+6	+13	+14	+33
Disabilities	+1.6%	+34		-1			-1	-23	-3	+10	-0	+1	+21	+6	+8		+20	+0	-3		+0	+26	+3	+3	+2	+8	-4	-1	-5	+3	+0	-3	+1
Older People	-1.7%	-25				-0	-0	+9	+2	+1	+1		+1	+14	-2			+0		-0		-1	+3	+1	-1	+3	+1	-0	+1	-18	-24	+1	-41
CHO 8	+0.3%	+9			-1		-0	-1	-14	-1	+11	+1	+1	+22	+20	+6	+20	+1	-3	-0	+0	+24	+6	+4	+1	+11	-3	-1	-4	-15	-24	-1	-40
Disabilities	+2.7%	+86	-1	-4	+2		-3	+1	+1	-3		+3	+1	+3	+8	-2	+53	+2	+8		+1	+0	+1	+9	+5	+15	-51	-1	-52	+44		+8	+53
Older People	+3.4%	+30	+1		-1		+0	+3	+2	+6	-0			+10	+17	-1	-0	+1			+1	+18	-1	+3	+5	+4	-7		+4	-7		-1	-8
CHO 9	+2.9%	+116	-0	-4	+1		-3	+4	+3	+2	-0	+3	+1	+13	+26	-3	+53	+3	+8	+1	+0	+88		+12	+8	+20	-46	-1	-47	+37		+8	+45
Disabilities	+20.2%	+1																					+1		+1								
Older People	-8.4%	-6														-1						-1	-0	-2	-3	-5							
other Community Services	-6.5%	-5														-1						-1	-0	-1	-3	-4							
		+1.9%	+3.9%	-23.6%	+5.1%	+16.0%	+7.4%	+1.0%	+16.8%	+0.9%	+9.7%	+121.1%	+108.3%	+2.0%	+3.4%	-1.9%	+6.3%	+0.0%	+12.3%	+11.3%	-3.0%	+5.2%	+8.8%	+7.1%	+2.7%	+4.8%	-7.0%	+0.1%	-6.1%	+2.6%	-3.2%	+4.6%	+1.5%

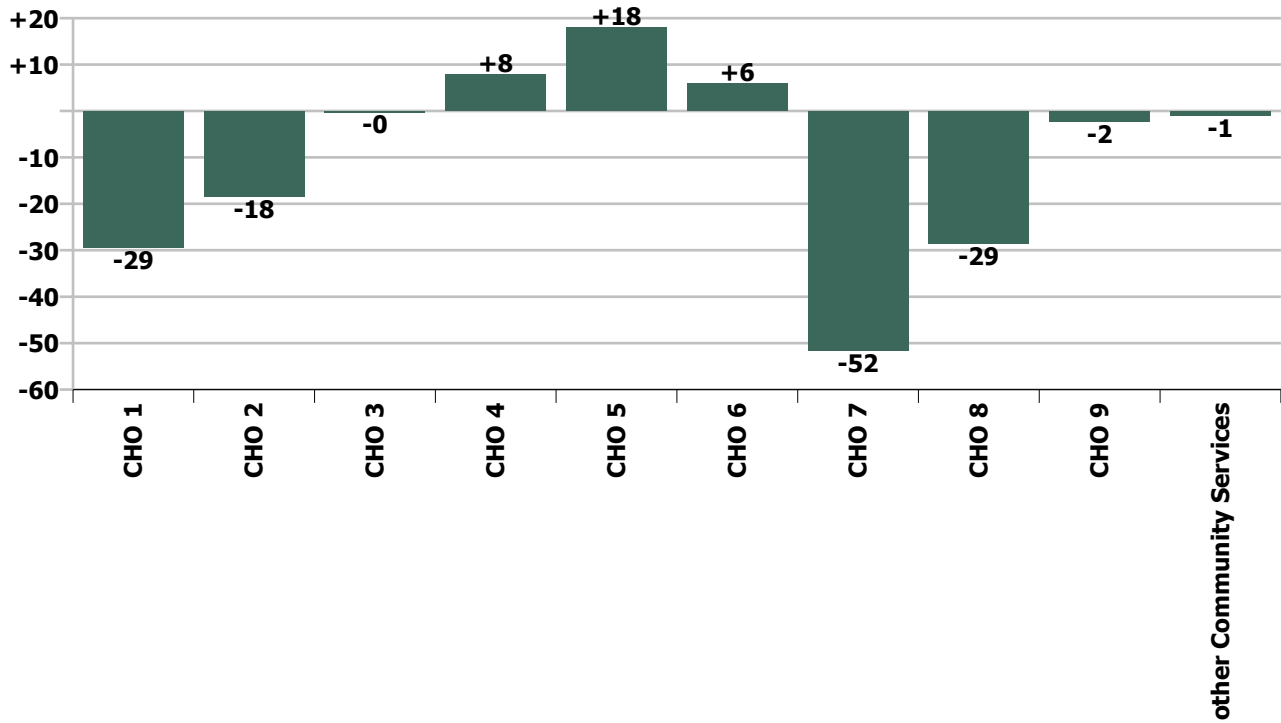
Staff Group change since: Sep 2020



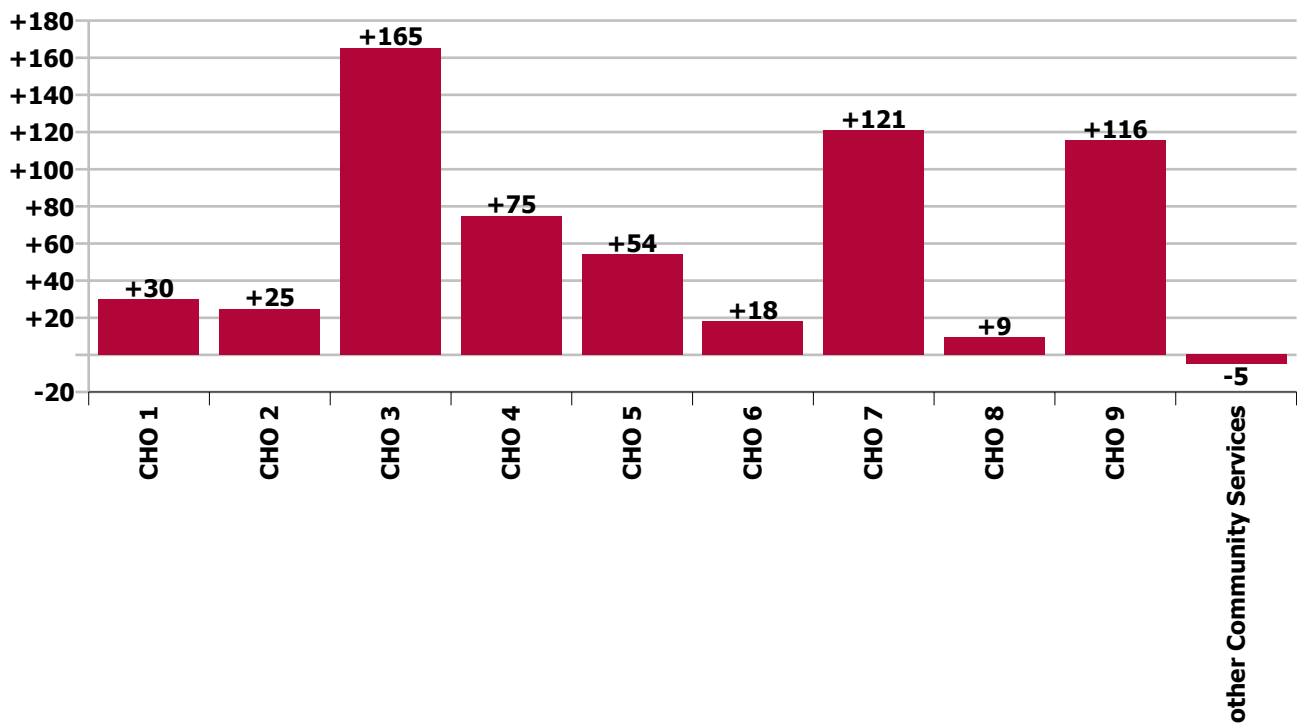
Staff Group change since: Oct 2019



CHO change since: Sep 2020



CHO change since: Oct 2019



Longitudinal Employment Levels by Grade Group - Oct 2013 to Oct 2020

Oct 2020 (Oct 2013 figure: 26,374)	WTE Oct 2020	WTE change since Oct 13	WTE change since Dec 15	WTE change since Dec 16	WTE change since Dec 17	WTE change since Dec 18	WTE change since Dec 19	% change since Oct 13	% change since Dec 15	% change since Dec 16	% change since Dec 17	% change since Dec 18	% change since Dec 19
Overall	32,034	+5,660	+3,712	+2,797	+1,533	+909	+498	+21.5%	+13.1%	+9.6%	+5.0%	+2.9%	+1.6%
Consultant Medicine	5	+1	-4	-6	-5	+1	+1	+27.6%	-44.1%	-58.2%	-50.2%	+27.2%	+27.2%
Consultant Paediatrics	3	+0	-0	-0	-0	-0	-0	+6.3%	-3.8%	-5.3%	-3.2%	-0.3%	-0.3%
Consultant Psychiatry	21	-8	-1	-1	-3	+3	+0	-28.4%	-4.4%	-4.8%	-11.6%	+17.0%	+0.5%
Consultant Radiology		-0						-100.0%	-100.0%	-100.0%	-100.0%	-100.0%	-100.0%
Consultant Surgery		-1	-1	-1	-0	-0		-100.0%	-100.0%	-100.0%	-100.0%	-100.0%	-100.0%
Consultants	29	-8	-6	-8	-8	+4	+1	-22.8%	-16.9%	-22.8%	-21.0%	+15.8%	+3.9%
Registrar	8	-9	-6	-4	-6	-5	-6	-51.7%	-43.2%	-30.5%	-40.8%	-36.9%	-40.8%
Senior Registrar	4			+1			+1			+33.3%			+33.3%
Specialist Registrar	5	+1		+1		+3	-1	+25.0%		+25.0%		+150.0%	-16.7%
Registrars	17	-8	-6	-2	-6	-2	-6	-30.8%	-26.3%	-8.2%	-24.5%	-9.0%	-24.5%
SHO/ Interns	23	+3	+7	+7	+6	+4	+1	+13.7%	+47.2%	+45.7%	+37.4%	+23.1%	+5.8%
Dentists			-1					-100.0%	-100.0%	-100.0%	-100.0%	-100.0%	-100.0%
Other Medical	114	+13	+16	+13	+14	+14	+3	+12.3%	+16.1%	+13.1%	+13.8%	+14.4%	+2.8%
Medical/ Dental, other	114	+13	+15	+13	+14	+14	+3	+12.3%	+15.5%	+13.1%	+13.8%	+14.4%	+2.8%
Medical & Dental	183	-1	+11	+11	+7	+21		-0.4%	+6.3%	+6.1%	+4.0%	+12.9%	
Clinical Nurse/ Midwife Manager	1,329	+54	+3	-17	-8	-4	+10	+4.2%	+0.2%	-1.3%	-0.6%	-0.3%	+0.7%
Director Nursing/Midwifery, Assistant	146	+25	+23	+16	+17	+21	+2	+21.2%	+18.9%	+12.1%	+13.1%	+16.8%	+1.6%
Director of Nursing/Midwifery	146	+32	+18	+17	+18	+25	+6	+27.7%	+14.1%	+13.5%	+14.1%	+21.1%	+4.0%
Nurse/ Midwife Manager	1,621	+111	+44	+16	+27	+43	+18	+7.4%	+2.8%	+1.0%	+1.7%	+2.7%	+1.1%
Advanced Nurse/ Midwife Practitioner	24	+20	+21	+20	+19	+15	+11	+516.2%	+697.0%	+497.8%	+378.2%	+166.3%	+88.0%
Clinical Nurse/ Midwife Specialist	76	-22	-14	-8	-3	-7	+0	-22.4%	-15.9%	-9.2%	-4.2%	-8.7%	+0.2%
Nurse/ Midwife Specialist & AN/MP	100	-2	+7	+12	+16	+8	+11	-1.8%	+7.1%	+14.0%	+18.5%	+8.4%	+12.8%
Graduate Nursing/ Midwifery		-11	-13					-100.0%	-100.0%	-100.0%	-100.0%	-100.0%	-100.0%
Staff Midwives	1	-0	-0	+0	-1	+1	+1	-21.0%	-1.2%	+97.5%	-56.1%	-100.0%	-100.0%
Staff Nurse [Intellectual Disability]	1,485	-271	-296	-241	-218	-200	-112	-15.5%	-16.6%	-13.9%	-12.8%	-11.9%	-7.0%
Staff Nurse [Psychiatric]	75	-74	-35	-15	-0	-1	-13	-49.5%	-31.4%	-16.4%	-0.6%	-1.2%	-14.6%
Staff Nurses [General/ Children's]	3,591	-181	+87	+74	+105	+118	+127	-4.8%	+2.5%	+2.1%	+3.0%	+3.4%	+3.7%
Staff Nurse/ Staff Midwife	5,152	-537	-256	-181	-115	-82	+3	-9.4%	-4.7%	-3.4%	-2.2%	-1.6%	+0.1%
Public Health Nurse	20	-2	-3	-1	-1	-1	+0	-9.5%	-13.1%	-4.9%	-5.4%	-2.6%	+0.3%
Pre-registration Nurse/ Midwife Intern	7	-16	-7	-5	-5	-28	-21	-69.7%	-51.1%	-41.8%	-40.7%	-79.9%	-75.3%
Pre-registration Nurse Intern (COVID-19)	47	+47	+47	+47	+47	+47	+47	-100.0%	-100.0%	-100.0%	-100.0%	-100.0%	-100.0%
Post-registration Nurse/ Midwife Student	2	+1	+2	+2	+2	+2	+1	+85.0%	-100.0%	-100.0%	-100.0%	-100.0%	+85.0%
Nursing/ Midwifery awaiting registration	14	+14	+14	+14	+0	+14	-1	-100.0%	-100.0%	-100.0%	+1.8%	-100.0%	-4.0%
Nursing/ Midwifery Student	70	+46	+55	+58	+44	+35	+26	+189.6%	+387.5%	+480.1%	+169.9%	+99.9%	+57.9%
Nursing Education/Clinical	47	+20	+26	+25	+25	+25	+25	+75.5%	+119.2%	+111.0%	+112.5%	+111.8%	+111.6%
Other Nursing/ Midwifery	1	-7	-5	-4	-4			-87.1%	-84.5%	-80.0%	-80.0%		
Nursing/ Midwifery other	48	+13	+20	+21	+21	+25	+25	+38.9%	+72.0%	+75.9%	+77.0%	+107.0%	+106.8%

Oct 2020 (Oct 2013 figure: 26,374)	WTE Oct 2020	WTE change since Oct 13	WTE change since Dec 15	WTE change since Dec 16	WTE change since Dec 17	WTE change since Dec 18	WTE change since Dec 19	% change since Oct 13	% change since Dec 15	% change since Dec 16	% change since Dec 17	% change since Dec 18	% change since Dec 19
Overall	32,034	+5,660	+3,712	+2,797	+1,533	+909	+498	+21.5%	+13.1%	+9.6%	+5.0%	+2.9%	+1.6%
Nursing & Midwifery	7,010	-371	-133	-75	-9	+27	+83	-5.0%	-1.9%	-1.1%	-0.1%	+0.4%	+1.2%
Dietitians	35	+8	+13	+6	+5	+4	-0	+31.4%	+56.8%	+19.9%	+18.2%	+12.1%	-0.2%
Occupational Therapists	386	+128	+92	+39	+43	+41	+9	+49.5%	+31.3%	+11.2%	+12.4%	+11.9%	+2.3%
Physiotherapists	323	+60	+37	+22	+17	+15	+10	+22.9%	+12.9%	+7.4%	+5.7%	+4.8%	+3.3%
Podiatrists & Chiropodists	11	-2	-1	-4	-5	-4	-1	-15.9%	-8.2%	-24.9%	-31.2%	-25.7%	-7.8%
Speech & Language Therapists	330	+134	+96	+39	+24	+28	+14	+68.1%	+41.3%	+13.4%	+7.7%	+9.2%	+4.5%
Therapy Professions	1,085	+328	+237	+102	+84	+84	+32	+43.3%	+28.0%	+10.4%	+8.4%	+8.3%	+3.0%
Audiology		-7	-14	-13	-18			-100.0%	-100.0%	-100.0%	-100.0%	-100.0%	-100.0%
Clinical Engineering	13	-5	-5	-5	-5	+1	-0	-27.7%	-28.5%	-29.2%	-28.1%	+7.9%	-0.4%
Clinical Measurement	2	+1	+1	+1	+1	+1	+1	+125.0%	+125.0%	+125.0%	+125.0%	+108.3%	+86.0%
Medical Laboratory	4	+1	+1		+1			+33.3%	+33.3%		+33.3%		
Phlebotomists		-1	-1	-1	-1	-1	-1	-100.0%	-100.0%	-100.0%	-100.0%	-100.0%	-100.0%
Radiographers	6	-4	-2	-2	-2	-1	-1	-38.0%	-27.8%	-26.5%	-27.4%	-10.1%	-14.0%
Health Science/ Diagnostics	25	-14	-20	-20	-24	+0	-1	-35.7%	-44.4%	-44.2%	-48.7%	+1.8%	-3.7%
Social Care	2,721	+957	+778	+527	+372	+229	+123	+54.2%	+40.0%	+24.0%	+15.8%	+9.2%	+4.7%
Social Workers	322	+86	+58	+19	+17	+7	+5	+36.4%	+22.0%	+6.4%	+5.7%	+2.4%	+1.4%
Psychologists	229	+61	+37	+18	+5	+22	+22	+36.1%	+19.0%	+8.7%	+2.2%	+10.4%	+10.9%
Pharmacy	25	+6	+4	+4	+4	+2	+3	+33.1%	+19.1%	+20.8%	+16.5%	+7.1%	+13.4%
Counsellor Therapists	21	+8	+4	+4	+1	+3	+2	+62.7%	+24.3%	+22.9%	+6.5%	+16.5%	+9.5%
HSCP Trainees/ Students		-2	-3	-2	-1			-100.0%	-100.0%	-100.0%	-100.0%	-100.0%	-100.0%
Other Health & Social Care	49	-22	-14	-11	-11	-5	-2	-30.7%	-22.8%	-18.4%	-19.0%	-8.6%	-4.4%
Play Therapists/ Specialists	13	-5	-2	-3	-1	-3	-4	-27.8%	-12.8%	-16.7%	-10.4%	-18.5%	-22.9%
H&SC, Other	82	-20	-15	-12	-12	-5	-4	-20.0%	-15.7%	-12.8%	-13.0%	-5.2%	-4.9%
Health & Social Care Professionals	4,488	+1,403	+1,078	+639	+446	+339	+180	+45.5%	+31.6%	+16.6%	+11.0%	+8.2%	+4.2%
Executive Management	48	+19	+14	+12	+2	+6	+5	+65.6%	+41.0%	+33.2%	+4.4%	+14.7%	+12.3%
Senior Management (VIII & GM)	231	+102	+64	+53	+53	+38	+20	+79.2%	+38.7%	+29.9%	+30.1%	+19.7%	+9.2%
Management (VIII & above)	279	+121	+78	+65	+55	+44	+25	+76.7%	+39.1%	+30.5%	+24.8%	+18.8%	+9.8%
Middle Management (V-VII)	668	+247	+218	+172	+148	+98	+40	+58.5%	+48.4%	+34.6%	+28.4%	+17.2%	+6.3%
Other Administrative	15	-4	-1		-2	-2	-1	-19.7%	-8.8%		-12.6%	-11.9%	-7.1%
Administrative/ Supervisory (V to VII)	683	+243	+216	+172	+145	+96	+39	+55.3%	+46.4%	+33.6%	+27.1%	+16.4%	+6.0%
Clerical (III & IV)	1,255	+273	+211	+164	+113	+36	+23	+27.9%	+20.2%	+15.1%	+9.9%	+3.0%	+1.9%
Management & Administrative	2,216	+637	+505	+401	+314	+177	+87	+40.4%	+29.5%	+22.1%	+16.5%	+8.7%	+4.1%
Catering	318	-15	-9	-8	+1	-1	-1	-4.5%	-2.8%	-2.4%	+0.3%	-0.4%	-0.3%
Household Services	876	-372	-255	-195	-135	-94	-36	-29.8%	-22.5%	-18.2%	-13.4%	-9.7%	-3.9%
Other Labs & Associated	1		-0	-0		-0			-16.7%	-6.5%		-3.8%	
Other Support	168	-71	-85	-66	-65	-61	-55	-29.9%	-33.6%	-28.4%	-28.0%	-26.8%	-24.6%
Portering	105	-35	-7	-7	-5	-0	-4	-25.2%	-6.6%	-6.0%	-4.9%	-0.4%	-3.8%
Support	1,468	-494	-356	-276	-205	-157	-96	-25.2%	-19.5%	-15.8%	-12.2%	-9.7%	-6.1%

Oct 2020 (Oct 2013 figure: 26,374)	WTE Oct 2020	WTE change since Oct 13	WTE change since Dec 15	WTE change since Dec 16	WTE change since Dec 17	WTE change since Dec 18	WTE change since Dec 19	% change since Oct 13	% change since Dec 15	% change since Dec 16	% change since Dec 17	% change since Dec 18	% change since Dec 19
Overall	32,034	+5,660	+3,712	+2,797	+1,533	+909	+498	+21.5%	+13.1%	+9.6%	+5.0%	+2.9%	+1.6%
Maintenance	215	-25	-18	-13	-17	-7	+1	-10.4%	-7.8%	-5.7%	-7.5%	-3.1%	+0.4%
Technical Services	9	+5	+4	+4	+4	+3	+1	+122.0%	+78.4%	+78.4%	+78.4%	+49.2%	+12.3%
Maintenance/ Technical	224	-20	-14	-9	-13	-4	+2	-8.2%	-6.0%	-3.8%	-5.7%	-1.7%	+0.8%
General Support	1,692	-514	-370	-285	-218	-161	-94	-23.3%	-18.0%	-14.4%	-11.4%	-8.7%	-5.2%
HCA, Nurse's Aide, etc.	11,135	+3,136	+1,979	+1,335	+874	+473	+296	+39.2%	+21.6%	+13.6%	+8.5%	+4.4%	+2.7%
Health & Social Care Assistants	36	+3	-2	-1	+1	+1	+5	+9.7%	-6.2%	-2.5%	+2.3%	+1.8%	+16.0%
Health Care Assistants	11,171	+3,139	+1,977	+1,334	+874	+474	+301	+39.1%	+21.5%	+13.6%	+8.5%	+4.4%	+2.8%
Home Help	3,460	+1,014	+368	+570	-19	-72	-90	+41.4%	+11.9%	+19.7%	-0.6%	-2.1%	-2.5%
Ambulance Staff		-8						-100.0%	-100.0%	-100.0%	-100.0%	-100.0%	-100.0%
Care, other	1,814	+361	+277	+202	+138	+104	+32	+24.9%	+18.0%	+12.6%	+8.2%	+6.1%	+1.8%
Patient & Client Care	16,445	+4,506	+2,622	+2,106	+993	+506	+243	+37.7%	+19.0%	+14.7%	+6.4%	+3.2%	+1.5%

Source: Health Service Personnel Census