

South/South West Hospital Group Employment Report: July 2021

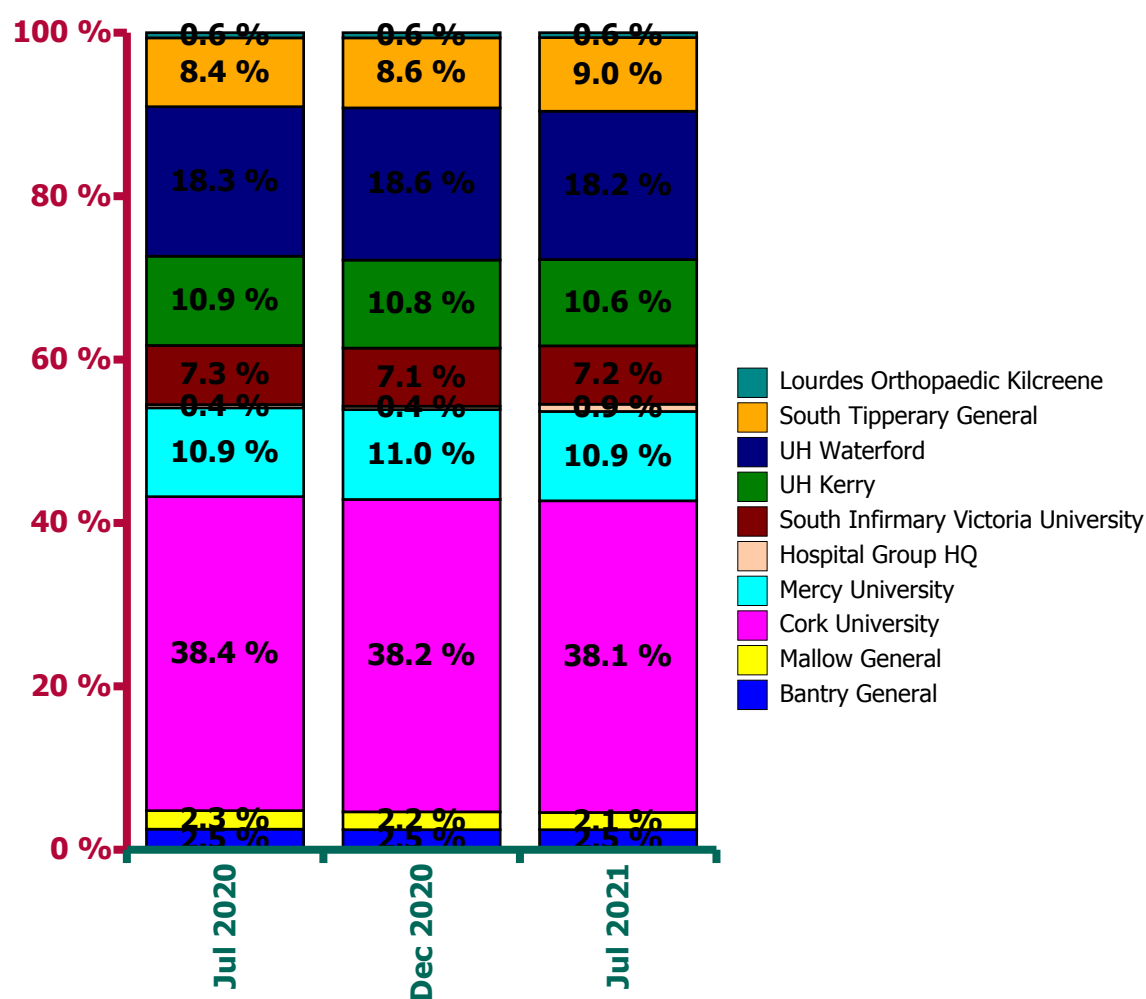
Employment by Staff Group

Jul 2021 (Dec 2020 figure: 11,288)	WTE Jun 2021	WTE Jul 2021	WTE change since Jun 21	% change since Jun 21	WTE change since Dec 20	WTE change since Jul 20
Overall	11,778	11,897	+119.81	+1.0%	+609	+533
Consultants	517	518	+1	+0.2%	+10	+23
Registrars	539	550	+11	+2.1%	+20	+25
SHO/ Interns	607	601	-6	-1.0%	-14	-64
Medical/ Dental, other	10	9	-1	-12.2%	+1	+1
Medical & Dental	1,674	1,679	+5	+0.3%	+18	-16
Nurse/ Midwife Manager	869	880	+12	+1.3%	+24	+3
Nurse/ Midwife Specialist & AN/MP	209	210	+2	+0.8%	+16	+37
Staff Nurse/ Staff Midwife	3,445	3,469	+23	+0.7%	+134	+279
<i>Pre-registration Nurse/ Midwife Intern</i>	88	100	+12	+14.0%	+70	+100
<i>Pre-registration Nurse Intern (COVID-19)</i>	3	2	-1	-22.7%	+2	-178
<i>Post-registration Nurse/ Midwife Student</i>	20	19	-1	-3.2%	-10	-5
<i>Nursing/ Midwifery awaiting registration</i>	27	6	-21	-76.5%	-3	+6
Nursing/ Midwifery Student	138	128	-10	-7.1%	+66	-76
Nursing/ Midwifery other	15	15	-0	-0.3%	-0	+0
<i>Public Health Nurse</i>	0	0	0		+0	+0
Public Health Nurse	0	0			+0	+0
Nursing & Midwifery	4,676	4,703	+27	+0.6%	+240	+243
Therapy Professions	381	382	+1	+0.3%	+25	+29
Health Science/ Diagnostics	883	886	+3	+0.4%	+32	+39
Social Workers	38	39	+1	+2.2%	+2	+8
Psychologists	2	2	+1	+58.7%	+1	+1
Pharmacy	169	168	-1	-0.4%	+18	+22
H&SC, Other	26	29	+4	+15.2%	+8	+24
Health & Social Care Professionals	1,498	1,507	+9	+0.6%	+86	+124
Management (VIII & above)	63	62	-1	-0.8%	+7	+5
Administrative/ Supervisory (V to VII)	343	347	+4	+1.1%	+25	+48
Clerical (III & IV)	1,321	1,340	+19	+1.4%	+70	+84
Management & Administrative	1,727	1,749	+23	+1.3%	+102	+137
Support	1,399	1,455	+56	+4.0%	+134	+124
Maintenance/ Technical	43	42	-1	-2.3%	+1	+6
General Support	1,442	1,497	+55	+3.8%	+135	+129
Health Care Assistants	746	748	+1	+0.2%	+28	-89
Care, other	15	15	+0	+0.8%	+0	+5
Patient & Client Care	761	763	+2	+0.2%	+28	-84

South/South West Hospital Group Employment by Hospital: Jul 2021

Jul 2021 (Dec 2020 figure: 11,288)	WTE Jun 2021	WTE Jul 2021	WTE change since Jun 21	% change since Jun 21	WTE change since Dec 20	WTE change since Jul 20
Overall	11,778	11,897	+120	+1.0%	+609	+533
Bantry General	289	293	+4	+1.5%	+16	+7
Mallow General	251	250	-0	-0.1%	+4	-8
Cork University	4,484	4,537	+53	+1.2%	+222	+170
Mercy University	1,303	1,302	-2	-0.1%	+59	+67
Hospital Group HQ	86	105	+19	+22.1%	+59	+60
South Infirmary Victoria University	845	852	+7	+0.8%	+48	+27
UH Kerry	1,258	1,257	-1	-0.1%	+42	+16
UH Waterford	2,135	2,160	+25	+1.2%	+57	+80
South Tipperary General	1,056	1,071	+15	+1.4%	+103	+114
Lourdes Orthopaedic Kilcreene	72	71	-1	-1.3%	+1	-1

South/South West Hospital Group



**South/South West Hospital Group Employment by Administration (HSE / S38):
July 2021**

Jul 2021 (Dec 2020 figure: 11,288)	WTE Jun 2021	WTE Jul 2021	WTE change since Jun 21	% change since Jun 21	WTE change since Dec 20	WTE change since Jul 20
Overall	11,778	11,897	+120	+1.0%	+609	+533
HSE	9,629	9,744	+114	+1.2%	+503	+439
Section 38 Hospitals	2,148	2,154	+5	+0.2%	+107	+94

HSE

Jul 2021 (Dec 2020 figure: 9,241)	WTE Jun 2021	WTE Jul 2021	WTE change since Jun 21	% change since Jun 21	WTE change since Dec 20	WTE change since Jul 20
Overall	9,629	9,744	+114	+1.2%	+503	+439
Consultants	433	434	+1	+0.0%	+9	+23
Registrars	468	478	+11	+0.0%	+17	+24
SHO/ Interns	500	496	-4	-0.0%	-6	-40
Medical/ Dental, other	10	9	-1	-0.1%	+1	+1
Medical & Dental	1,412	1,418	+6	+0.4%	+21	+8
Nurse/ Midwife Manager	667	679	+12	+0.0%	+18	+1
Nurse/ Midwife Specialist & AN/MP	176	178	+2	+0.0%	+11	+29
Staff Nurse/ Staff Midwife	2,912	2,939	+27	+0.0%	+115	+237
<i>Pre-registration Nurse/ Midwife Intern</i>	74	86	+12	+0.2%	+56	+86
<i>Pre-registration Nurse Intern (COVID-19)</i>	3	2	-1	-0.2%	+2	-139
<i>Post-registration Nurse/ Midwife Student</i>	20	19	-1	-0.0%	-10	-5
<i>Nursing/ Midwifery awaiting registration</i>	23	2	-21	-0.9%	-5	+2
Nursing/ Midwifery Student	119	110	-10	-0.1%	+54	-55
Nursing/ Midwifery other	9	9	-0	-0.0%	-0	+1
<i>Public Health Nurse</i>	0	0		+0.0%	+0	+0
Public Health Nurse	0	0		+0.0%	+0	+0
Nursing & Midwifery	3,884	3,916	+32	+0.8%	+197	+213
Therapy Professions	299	299	-0	-0.0%	+20	+26
Health Science/ Diagnostics	755	758	+3	+0.0%	+27	+31
Social Workers	27	27	+1	+0.0%	+2	+6
Psychologists		1	+1	-1.0%	+1	+1
Pharmacy	131	132	+1	+0.0%	+18	+24
H&SC, Other	26	29	+4	+0.2%	+11	+24
Health & Social Care Professionals	1,237	1,247	+10	+0.8%	+79	+112
Management (VIII & above)	46	45	-1	-0.0%	+5	+3
Administrative/ Supervisory (V to VII)	248	252	+4	+0.0%	+23	+47
Clerical (III & IV)	974	986	+11	+0.0%	+32	+34
Management & Administrative	1,268	1,283	+15	+1.2%	+59	+84
Support	1,206	1,260	+53	+0.0%	+118	+101
Maintenance/ Technical	28	27	-1	-0.0%	-0	+1
General Support	1,234	1,287	+52	+4.2%	+118	+102
Health Care Assistants	582	582	-0	-0.0%	+29	-84
Care, other	12	12	+0	+0.0%	+0	+4
Patient & Client Care	594	594	-0	-0.0%	+29	-80

Section 38 Hospitals

Jul 2021 (Dec 2020 figure: 2,047)	WTE Jun 2021	WTE Jul 2021	WTE change since Jun 21	% change since Jun 21	WTE change since Dec 20	WTE change since Jul 20
Overall	2,148	2,154	+5	+0.2%	+107	+94
Consultants	84	84	+0	+0.0%	+2	-0
Registrars	71	72	+0	+0.0%	+3	+0
SHO/ Interns	107	105	-2	-0.0%	-8	-24
Medical & Dental	262	261	-1	-0.4%	-2	-23
Nurse/ Midwife Manager	202	201	-1	-0.0%	+6	+2
Nurse/ Midwife Specialist & AN/MP	33	33	-1	-0.0%	+6	+8
Staff Nurse/ Staff Midwife	533	530	-3	-0.0%	+20	+41
<i>Pre-registration Nurse/ Midwife Intern</i>	15	15		+0.0%	+15	+15
<i>Pre-registration Nurse Intern (COVID-19)</i>				-1.0%		-40
<i>Nursing/ Midwifery awaiting registration</i>	4	4	-0	-0.0%	+2	+4
Nursing/ Midwifery Student	19	18	-0	-0.0%	+12	-22
Nursing/ Midwifery other	6	6		+0.0%	-0	-1
Nursing & Midwifery	792	787	-5	-0.6%	+43	+29
Therapy Professions	82	83	+1	+0.0%	+5	+2
Health Science/ Diagnostics	128	128		+0.0%	+5	+8
Social Workers	12	12	-0	-0.0%	+1	+2
Psychologists	2	2		+0.0%		
Pharmacy	38	36	-2	-0.1%	+0	-1
H&SC, Other				-1.0%	-3	
Health & Social Care Professionals	261	260	-1	-0.4%	+7	+12
Management (VIII & above)	17	17		+0.0%	+2	+2
Administrative/ Supervisory (V to VII)	94	94	+0	+0.0%	+2	+2
Clerical (III & IV)	347	355	+8	+0.0%	+38	+50
Management & Administrative	458	466	+8	+1.7%	+42	+53
Support	193	195	+3	+0.0%	+16	+23
Maintenance/ Technical	15	15		+0.0%	+1	+5
General Support	207	210	+3	+1.3%	+17	+28
<i>HCA, Nurse's Aide, etc.</i>	160	162	+2	+0.0%	-7	-6
<i>Health & Social Care Assistants</i>	4	4		+0.0%	-1	+1
Health Care Assistants	164	166	+2	+0.0%	-1	-5
<i>Other Care Grades</i>	3	3		+0.0%	+1	+1
Care, other	3	3		+0.0%		+1
Patient & Client Care	167	169	+2	+0.9%	-1	-4

South/South West Hospital Group Employment by Hospital & Staff Category: July 2021

Bantry General

Jul 2021 (Dec 2020 figure: 277)	WTE Jun 2021	WTE Jul 2021	WTE change since Jun 21	% change since Jun 21	WTE change since Dec 19
Overall	289	293	+4	+1.5%	+16
Consultant Medicine	3	3	0	+0.0%	
Consultant Surgery	1	1	0	+0.0%	
Consultants	4	4	0	+0.0%	
Registrar	2	2	-0	-0.1%	-0
Senior Registrar	1	1	0	+0.0%	-1
Specialist Registrar	2	2	-0	-0.0%	-0
Registrars	5	5	-0	-0.0%	-0
Interns	5	5	+0	+0.1%	+1
Senior House Officer	7	7	-0	-0.1%	-2
SHO/ Interns	12	12	-0	-0.0%	-2
Other Medical	1	1	0	+0.0%	+0
Medical/ Dental, other	1	1	0	+0.0%	
Medical & Dental	22	22	-0	-0	-2
Clinical Nurse/ Midwife Manager	24	24	+0	+0.0%	+4
Director Nursing/Midwifery, Assistant	5	5	0	+0.0%	-1
Director of Nursing/Midwifery	1	1	+0	+0.1%	
Nurse/ Midwife Manager	30	30	+0	+0.0%	+2
Advanced Nurse/ Midwife Practitioner	3	3	-0	-0.0%	+3
Clinical Nurse/ Midwife Specialist	2	2	+0	+0.0%	-0
Nurse/ Midwife Specialist & AN/MP	5	5	+0	+0.0%	+1
Staff Nurses [General/ Children's]	85	85	+1	+0.0%	+2
Staff Nurse/ Staff Midwife	85	85	+1	+0.0%	+2
Pre-registration Nurse Intern (COVID-19)				-1.0%	
Nursing/ Midwifery Student				-1.0%	-1
Nursing & Midwifery	119	120	+1	+1	+4
Dietitians	1	1	0	+0.0%	
Occupational Therapists	1	1	-0	-0.3%	
Physiotherapists	7	7	+0	+0.0%	+2
Podiatrists & Chiropodists	1	1	-0	-0.3%	+1
Speech & Language Therapists	1	1	0	+0.0%	
Therapy Professions	11	10	-0	-0.0%	+1
Clinical Measurement	1	1	0	+0.0%	
Phlebotomists	2	2	+0	+0.0%	-0
Radiographers	8	7	-1	-0.1%	-0
Medical Science	7	7	0	+0.0%	+0
Health Science/ Diagnostics	18	17	-1	-0.0%	+1
Pharmacy	2	2	+0	+0.0%	
Pharmacy	2	2	+0	+0.0%	
Health & Social Care Professionals	31	30	-1	-1	+2
Senior Management (VIII & GM)	1	1	0	+0.0%	+1
Management (VIII & above)	1	1	0	+0.0%	+1
Middle Management (V-VII)	4	4	+0	+0.0%	+1
Administrative/ Supervisory (V to VII)	4	4	+0	+0.0%	-1
General Administrative (III & IV)	22	23	+0	+0.0%	+1
Clerical (III & IV)	22	23	+0	+0.0%	+1

Management & Administrative	28	28	+0	+0	+1
<i>Catering</i>	4	4	0	+0.0%	
<i>Household Services</i>	5	5	0	+0.0%	-2
<i>Portering</i>	9	9	0	+0.0%	-0
Support	18	18	0	+0.0%	+0
<i>Maintenance</i>	1	1	0	+0.0%	
Maintenance/ Technical	1	1	0	+0.0%	
General Support	19	19			+0
<i>HCA, Nurse's Aide, etc.</i>	70	71	+2	+0.0%	+16
<i>HCA (Student Nurse/Midwife COVID-19)</i>		3	+3	-1.0%	+3
Health Care Assistants	70	74	+4	+0.1%	+11
<i>Other Care Grades</i>	1	1	0	+0.0%	
Care, other	1	1	0	+0.0%	
Patient & Client Care	70	74	+4	+4	+11

Mallow General

Jul 2021 (Dec 2020 figure: 246)	WTE Jun 2021	WTE Jul 2021	WTE change since Jun 21	% change since Jun 21	WTE change since Dec 19
Overall	251	250	-0	-0.1%	+4
Consultant Anaesthesia	2	2	0	+0.0%	-1
Consultant Medicine	4	4	+0	+0.0%	+0
Consultant Radiology	1	1	0	+0.0%	
Consultant Surgery	2	2	0	+0.0%	-1
Consultants	9	9	+0	+0.0%	-1
Registrar	2	2	0	+0.0%	-1
Senior Registrar	1	1	0	+0.0%	
Specialist Registrar	2	1	-1	-0.5%	-1
Registrars	5	4	-1	-0.2%	-2
Interns	5	6	+1	+0.1%	+2
Senior House Officer	5	5	-0	-0.0%	-2
SHO/ Interns	10	10	+0	+0.0%	-1
Medical & Dental	24	24	-0	-0	-3
Clinical Nurse/ Midwife Manager	17	17	-1	-0.0%	+0
Director Nursing/Midwifery, Assistant	6	6	+0	+0.0%	+1
Nurse/ Midwife Manager	23	23	-1	-0.0%	+1
Advanced Nurse/ Midwife Practitioner	1	1	0	+0.0%	+1
Clinical Nurse/ Midwife Specialist	1	1	0	+0.0%	+1
Nurse/ Midwife Specialist & AN/MP	2	2	0	+0.0%	
Staff Midwives				-1.0%	-1
Staff Nurses [General/ Children's]	77	78	+1	+0.0%	-6
Staff Nurse/ Staff Midwife	77	78	+1	+0.0%	+5
Nursing & Midwifery	102	103	+0	+0	+6
Dietitians	1	1	0	+0.0%	+1
Occupational Therapists	1	0	-0	-0.7%	-0
Physiotherapists	3	3	0	+0.0%	-1
Therapy Professions	5	4	-0	-0.1%	-0
Clinical Measurement	3	3	0	+0.0%	+1
Phlebotomists	1	1	0	+0.0%	
Radiographers	7	7	0	+0.0%	+0
Medical Science	5	6	+1	+0.1%	+1
Health Science/ Diagnostics	16	16	+1	+0.0%	
Pharmacy	3	3	+1	+0.2%	+0
Pharmacy	3	3	+1	+0.2%	+1
Health & Social Care Professionals	23	24	+1	+1	+1
Senior Management (VIII & GM)	1	1	0	+0.0%	+1
Management (VIII & above)	1	1	0	+0.0%	+1
Middle Management (V-VII)	7	7	+0	+0.0%	+2
Administrative/ Supervisory (V to VII)	7	7	+0	+0.0%	-1
General Administrative (III & IV)	33	32	-0	-0.0%	-2
Clerical (III & IV)	33	32	-0	-0.0%	+1
Management & Administrative	41	40	-0	-0	+2
Catering	3	2	-0	-0.2%	-0
Household Services	15	15	0	+0.0%	+7
Other Labs & Associated				-1.0%	-1
Other Support				-1.0%	-1
Support	17	17	-0	-0.0%	+0
General Support	17	17	-0	-0	+0

<i>HCA, Nurse's Aide, etc.</i>	43	42	-1	-0.0%	-2
<i>HCA (Student Nurse/Midwife COVID-19)</i>		1	+1	-1.0%	+1
Health Care Assistants	43	43	+0	+0.0%	-0
<i>Other Care Grades</i>	0	0	0	+0.0%	
Care, other	0	0	0	+0.0%	
Patient & Client Care	43	43	+0	+0	-0

Cork University

Jul 2021 (Dec 2020 figure: 4,316)	WTE Jun 2021	WTE Jul 2021	WTE change since Jun 21	% change since Jun 21	WTE change since Dec 19
Overall	4,484	4,537	+53	+1.2%	+221
Consultant Anaesthesia	32	32	-0	-0.0%	-0
Consultant Emergency Medicine	8	8	0	+0.0%	+1
Consultant Medicine	64	64	-1	-0.0%	+5
Consultant Obstetrics & Gynaecology	18	17	-1	-0.0%	+1
Consultant, Other				-1.0%	-1
Consultant Paediatrics	18	18	-0	-0.0%	+6
Consultant Pathology	27	27	+0	+0.0%	+1
Consultant Radiology	19	19	-1	-0.0%	+1
Consultant Surgery	36	37	+1	+0.0%	+2
Consultants	221	220	-1	-0.0%	+5
Registrar	119	121	+3	+0.0%	+12
Senior Registrar	3	3	0	+0.0%	
Specialist Registrar	111	114	+3	+0.0%	+12
Registrars	232	238	+6	+0.0%	+7
Interns	59	65	+6	+0.1%	+15
Senior House Officer	147	133	-14	-0.1%	+4
SHO/ Interns	206	198	-8	-0.0%	-10
Other Medical	6	6	+1	+0.1%	+1
Medical/ Dental, other	6	6	+1	+0.1%	+1
Medical & Dental	664	662	-2	-2	+4
Clinical Nurse/ Midwife Manager	237	244	+7	+0.0%	-8
Director Nursing/Midwifery, Assistant	15	16	+1	+0.1%	+0
Director of Nursing/Midwifery	2	2	0	+0.0%	
Nurse/ Midwife Manager	255	263	+8	+0.0%	-3
Advanced Nurse/ Midwife Practitioner	20	19	-1	-0.1%	+11
Clinical Nurse/ Midwife Specialist	60	63	+3	+0.0%	+12
Nurse/ Midwife Specialist & AN/MP	80	81	+1	+0.0%	+5
Staff Midwives	212	212	+1	+0.0%	+8
Staff Nurses [General/ Children's]	1,200	1,197	-3	-0.0%	+151
Staff Nurse [Intellectual Disability]	1		-1	-1.0%	
Staff Nurse/ Staff Midwife	1,413	1,409	-4	-0.0%	+69
Pre-registration Nurse/ Midwife Intern	34	46	+12	+0.4%	+20
Pre-registration Nurse Intern (COVID-19)	3	2	-1	-0.3%	+2
Post-registration Nurse/ Midwife Student	20	19	-1	-0.0%	-10
Nursing/ Midwifery awaiting registration				-1.0%	-1
Nursing/ Midwifery Student	56	67	+11	+0.2%	+29
Nursing Education/Clinical	3	3	-0	-0.0%	+1
Nursing/ Midwifery other	3	3	-0	-0.0%	+0
Nursing & Midwifery	1,808	1,824	+16	+16	+101
Dietitians	34	35	+1	+0.0%	+5
Occupational Therapists	28	27	-1	-0.0%	+10
Orthoptists	1	1	0	+0.0%	
Physiotherapists	71	70	-2	-0.0%	+13
Podiatrists & Chiropodists	3	3	0	+0.0%	+1
Speech & Language Therapists	19	20	+1	+0.0%	+6
Therapy Professions	156	155	-1	-0.0%	+19
Biochemists	6	6	0	+0.0%	+3
Clinical Engineering	16	15	-1	-0.0%	-1
Clinical Measurement	23	23	-0	-0.0%	+2
Dosimetrists	10	10	+0	+0.0%	+2

<i>Perfusionists</i>	4	4	-0	-0.0%	-1
<i>Phlebotomists</i>	22	23	+0	+0.0%	+5
<i>Physicists</i>	28	28	-0	-0.0%	+9
<i>Radiation Therapists</i>	40	40	-0	-0.0%	-1
<i>Radiographers</i>	91	89	-2	-0.0%	+8
<i>Medical Science</i>	164	163	-1	-0.0%	-1
Health Science/ Diagnostics	405	401	-4	-0.0%	+12
<i>Social Workers</i>	19	20	+1	+0.0%	+4
Social Workers	19	20	+1	+0.0%	+2
<i>Psychologists</i>		1	+1	-1.0%	+1
Psychologists		1	+1	-1.0%	+1
<i>Pharmacy</i>	62	65	+3	+0.1%	+19
Pharmacy	62	65	+3	+0.1%	+12
<i>HSCP Trainees/ Students</i>	3	1	-2	-0.8%	-11
<i>Other Health & Social Care</i>	2	2	0	+0.0%	
<i>Play Therapists/ Specialists</i>	1	1	0	+0.0%	+1
H&SC, Other	6	4	-2	-0.4%	-9
Health & Social Care Professionals	647	646	-2	-2	+37
<i>Senior Management (VIII & GM)</i>	16	15	-1	-0.1%	+5
Management (VIII & above)	16	15	-1	-0.1%	+0
<i>Middle Management (V-VII)</i>	105	107	+2	+0.0%	+25
Administrative/ Supervisory (V to VII)	105	107	+2	+0.0%	+14
<i>General Administrative (III & IV)</i>	388	391	+3	+0.0%	+4
Clerical (III & IV)	388	391	+3	+0.0%	+4
Management & Administrative	509	513	+4	+4	+18
<i>Catering</i>	33	33	-0	-0.0%	-0
<i>Household Services</i>	326	347	+21	+0.1%	+65
<i>Other Labs & Associated</i>	44	54	+10	+0.2%	+33
<i>Other Support</i>	56	57	+1	+0.0%	-7
<i>Portering</i>	178	186	+8	+0.0%	+42
Support	638	678	+40	+0.1%	+77
<i>Maintenance</i>	2	2	0	+0.0%	
Maintenance/ Technical	2	2	0	+0.0%	
General Support	640	680	+40	+40	+77
<i>HCA, Nurse's Aide, etc.</i>	206	202	-3	-0.0%	+40
<i>Health & Social Care Assistants</i>	2	2	0	+0.0%	
<i>HCA (Student Nurse/Midwife COVID-19)</i>				-1.0%	
Health Care Assistants	208	204	-3	-0.0%	-15
<i>Other Care Grades</i>	8	8	-0	-0.0%	-1
Care, other	8	8	-0	-0.0%	-1
Patient & Client Care	216	213	-4	-4	-15

Mercy University

Jul 2021 (Dec 2020 figure: 1,243)	WTE Jun 2021	WTE Jul 2021	WTE change since Jun 21	% change since Jun 21	WTE change since Dec 19
Overall	1,303	1,302	-2	-0.1%	+59
Consultant Anaesthesia	11	11	0	+0.0%	+2
Consultant Medicine	18	18	0	+0.0%	+4
Consultant Paediatrics	4	4	+0	+0.1%	
Consultant Pathology	4	4	0	+0.0%	+1
Consultant Radiology	7	7	0	+0.0%	
Consultant Surgery	9	9	0	+0.0%	-0
Consultants	51	52	+0	+0.0%	+2
Registrar	30	30	+0	+0.0%	-6
Senior Registrar	2	2	0	+0.0%	+0
Specialist Registrar	16	19	+3	+0.2%	+4
Registrars	48	51	+3	+0.1%	+6
Interns	26	27	+1	+0.1%	+3
Senior House Officer	50	47	-3	-0.1%	-0
SHO/ Interns	76	74	-2	-0.0%	-9
Medical & Dental	175	177	+2	+2	-1
Clinical Nurse/ Midwife Manager	115	115	+0	+0.0%	-2
Director Nursing/Midwifery, Assistant	11	11	0	+0.0%	+1
Director of Nursing/Midwifery	1	1	0	+0.0%	
Nurse/ Midwife Manager	127	127	+0	+0.0%	-3
Advanced Nurse/ Midwife Practitioner	13	13	+0	+0.0%	+9
Clinical Nurse/ Midwife Specialist	7	6	-1	-0.1%	+0
Nurse/ Midwife Specialist & AN/MP	20	19	-1	-0.0%	+4
Staff Nurses [General/ Children's]	314	311	-3	-0.0%	+29
Staff Nurse/ Staff Midwife	314	311	-3	-0.0%	+22
Pre-registration Nurse/ Midwife Intern	10	10	0	+0.0%	+10
Pre-registration Nurse Intern (COVID-19)				-1.0%	
Nursing/ Midwifery awaiting registration	4	4	-0	-0.0%	+2
Nursing/ Midwifery Student	14	13	-0	-0.0%	+7
Nursing Education/Clinical	3	3	0	+0.0%	+0
Nursing/ Midwifery other	3	3	0	+0.0%	
Nursing & Midwifery	478	474	-4	-4	+31
Dietitians	7	8	+1	+0.1%	-1
Occupational Therapists	8	8	0	+0.0%	+2
Physiotherapists	16	17	+1	+0.0%	+1
Speech & Language Therapists	4	4	-0	-0.0%	+1
Therapy Professions	35	36	+1	+0.0%	+4
Biochemists	1	1	0	+0.0%	-0
Clinical Measurement	8	8	+0	+0.0%	-1
Phlebotomists	4	4	0	+0.0%	-0
Physicists	1	1	0	+0.0%	+1
Radiographers	41	40	-0	-0.0%	+10
Medical Science	50	50	-1	-0.0%	+7
Health Science/ Diagnostics	105	104	-0	-0.0%	+4
Social Workers	9	9	-0	-0.0%	+0
Social Workers	9	9	-0	-0.0%	+1
Psychologists	1	1	0	+0.0%	
Psychologists	1	1	0	+0.0%	
Pharmacy	22	21	-1	-0.1%	-1
Pharmacy	22	21	-1	-0.1%	-1

<i>HSCP Trainees/ Students</i>				-1.0%	-4
H&SC, Other				-1.0%	-3
Health & Social Care Professionals	172	171	-1	-1	+5
<i>Executive Management</i>	2	2	0	+0.0%	
<i>Senior Management (VIII & GM)</i>	8	8	0	+0.0%	+2
Management (VIII & above)	10	10	0	+0.0%	+2
<i>Middle Management (V-VII)</i>	50	50	+0	+0.0%	+10
Administrative/ Supervisory (V to VII)	50	50	+0	+0.0%	+2
<i>General Administrative (III & IV)</i>	191	191	+0	+0.0%	+24
Clerical (III & IV)	191	191	+0	+0.0%	+13
Management & Administrative	250	251	+0	+0	+18
<i>Catering</i>	10	10	0	+0.0%	+1
<i>Household Services</i>	49	47	-2	-0.0%	+2
<i>Other Labs & Associated</i>	8	8	+0	+0.0%	+6
<i>Other Support</i>	7	7	+0	+0.0%	+7
<i>Portering</i>	5	5	0	+0.0%	+2
Support	79	78	-2	-0.0%	+6
<i>Maintenance</i>	8	8	0	+0.0%	+3
<i>Technical Services</i>	3	3	0	+0.0%	+2
Maintenance/ Technical	11	11	0	+0.0%	+1
General Support	90	88	-2	-2	+7
<i>HCA, Nurse's Aide, etc.</i>	134	135	+2	+0.0%	+0
<i>Health & Social Care Assistants</i>	2	2	0	+0.0%	-1
Health Care Assistants	136	137	+2	+0.0%	-1
<i>Other Care Grades</i>	3	3	0	+0.0%	+1
Care, other	3	3	0	+0.0%	
Patient & Client Care	139	141	+2	+2	-1

Hospital Group HQ

Jul 2021 (Dec 2020 figure: 45)	WTE Jun 2021	WTE Jul 2021	WTE change since Jun 21	% change since Jun 21	WTE change since Dec 19
Overall	86	105	+19	+22.1%	+59
<i>Consultant Anaesthesia</i>	0	0	0	+0.0%	+0
Consultants	0	0	0	+0.0%	+0
<i>Other Medical</i>	3	1	-2	-0.7%	
Medical/ Dental, other	3	1	-2	-0.7%	
Medical & Dental	4	1	-2	-2	+0
<i>Clinical Nurse/ Midwife Manager</i>	6	8	+2	+0.2%	+7
<i>Director Nursing/Midwifery, Assistant</i>	2	3	+1	+0.5%	+1
<i>Director of Nursing/Midwifery</i>	2	3	+1	+0.5%	+2
Nurse/ Midwife Manager	10	14	+4	+0.3%	+8
<i>Staff Nurses [General/ Children's]</i>	3	3	-0	-0.1%	+3
Staff Nurse/ Staff Midwife	3	3	-0	-0.1%	+1
<i>Public Health Nurse</i>	0	0	0	+0.0%	+0
Public Health Nurse	0	0	0	+0.0%	+0
Nursing & Midwifery	13	17	+3	+3	+9
<i>Pharmacy</i>		1	+1	-1.0%	+1
Pharmacy		1	+1	-1.0%	+1
<i>Vaccinators</i>	15	24	+9	+0.6%	+24
H&SC, Other	15	24	+9	+0.6%	+24
Health & Social Care Professionals	15	25	+10	+10	+25
<i>Executive Management</i>	4	4	0	+0.0%	+1
<i>Senior Management (VIII & GM)</i>	10	10	+1	+0.1%	+1
Management (VIII & above)	14	14	+1	+0.0%	+1
<i>Middle Management (V-VII)</i>	17	18	+1	+0.0%	+2
Administrative/ Supervisory (V to VII)	17	18	+1	+0.0%	+2
<i>General Administrative (III & IV)</i>	17	24	+7	+0.4%	+22
Clerical (III & IV)	17	24	+7	+0.4%	+16
Management & Administrative	47	56	+9	+9	+19
<i>HCA, Nurse's Aide, etc.</i>	7	5	-1	-0.2%	+5
Health Care Assistants	7	5	-1	-0.2%	+5
Patient & Client Care	7	5	-1	-1	+5

South Infirmary Victoria University

Jul 2021 (Dec 2020 figure: 804)	WTE Jun 2021	WTE Jul 2021	WTE change since Jun 21	% change since Jun 21	WTE change since Dec 19
Overall	845	852	+7	+0.8%	+48
Consultant Anaesthesia	5	5	-0	-0.0%	
Consultant Medicine	9	9	+0	+0.0%	+1
Consultant Pathology	0	0	0	+0.0%	
Consultant Radiology	4	4	0	+0.0%	
Consultant Surgery	14	14	-0	-0.0%	+0
Consultants	33	32	-0	-0.0%	+0
Registrar	18	16	-2	-0.1%	+0
Specialist Registrar	6	5	-1	-0.2%	
Registrars	24	21	-3	-0.1%	-3
Interns	21	19	-2	-0.1%	+2
Senior House Officer	10	12	+2	+0.2%	+2
SHO/ Interns	31	31	0	+0.0%	+1
Medical & Dental	87	84	-3	-3	-2
Clinical Nurse/ Midwife Manager	66	65	-1	-0.0%	+6
Director Nursing/Midwifery, Assistant	8	8	0	+0.0%	+2
Director of Nursing/Midwifery	1	1	0	+0.0%	
Nurse/ Midwife Manager	75	74	-1	-0.0%	+9
Advanced Nurse/ Midwife Practitioner	4	4	0	+0.0%	+3
Clinical Nurse/ Midwife Specialist	10	10	0	+0.0%	-0
Nurse/ Midwife Specialist & AN/MP	13	13	0	+0.0%	+1
Staff Nurses [General/ Children's]	219	219	-0	-0.0%	-4
Staff Nurse/ Staff Midwife	219	219	-0	-0.0%	-2
Pre-registration Nurse/ Midwife Intern	5	5	0	+0.0%	+5
Nursing/ Midwifery Student	5	5	0	+0.0%	+5
Nursing Education/Clinical	2	2	0	+0.0%	
Nursing/ Midwifery other	2	2	0	+0.0%	
Nursing & Midwifery	314	313	-1	-1	+13
Dietitians	3	3	0	+0.0%	-1
Occupational Therapists	6	7	+0	+0.1%	+2
Physiotherapists	31	31	0	+0.0%	+6
Podiatrists & Chiropodists	1	1	-0	-0.4%	-1
Speech & Language Therapists	6	6	0	+0.0%	+1
Therapy Professions	47	47	+0	+0.0%	+1
Audiology	4	4	0	+0.0%	
Clinical Engineering	2	2	0	+0.0%	
Phlebotomists	4	4	+0	+0.1%	-0
Radiographers	13	13	0	+0.0%	+1
Medical Science	1	1	0	+0.0%	
Health Science/ Diagnostics	24	24	+0	+0.0%	+0
Social Workers	3	3	0	+0.0%	
Social Workers	3	3	0	+0.0%	
Psychologists	1	1	0	+0.0%	
Psychologists	1	1	0	+0.0%	
Pharmacy	15	14	-1	-0.1%	+4
Pharmacy	15	14	-1	-0.1%	+1
Health & Social Care Professionals	89	89	-0	-0	+2
Executive Management	1	1	0	+0.0%	
Senior Management (VIII & GM)	6	6	0	+0.0%	
Management (VIII & above)	7	7	0	+0.0%	

<i>Middle Management (V-VII)</i>	44	44	+0	+0.0%	+4
Administrative/ Supervisory (V to VII)	44	44	+0	+0.0%	-0
<i>General Administrative (III & IV)</i>	156	164	+8	+0.0%	+22
Clerical (III & IV)	156	164	+8	+0.0%	+25
Management & Administrative	208	216	+8	+8	+25
<i>Catering</i>	3	3	0	+0.0%	
<i>Household Services</i>	52	56	+4	+0.1%	+7
<i>Other Support</i>	14	14	0	+0.0%	+6
<i>Portering</i>	46	46	-0	-0.0%	+7
Support	114	118	+4	+0.0%	+10
<i>Maintenance</i>	4	4	0	+0.0%	
Maintenance/ Technical	4	4	0	+0.0%	
General Support	118	122	+4	+4	+10
<i>HCA, Nurse's Aide, etc.</i>	26	26	0	+0.0%	-7
<i>Health & Social Care Assistants</i>	2	2	0	+0.0%	
Health Care Assistants	28	28	0	+0.0%	
Patient & Client Care	28	28			

UH Kerry

Jul 2021 (Dec 2020 figure: 1,215)	WTE Jun 2021	WTE Jul 2021	WTE change since Jun 21	% change since Jun 21	WTE change since Dec 19
Overall	1,258	1,257	-1	-0.1%	+42
Consultant Anaesthesia	6	7	+1	+0.1%	-1
Consultant Emergency Medicine	3	3	0	+0.0%	
Consultant Medicine	13	13	+0	+0.0%	+4
Consultant Obstetrics & Gynaecology	3	3	-0	-0.0%	-0
Consultant Paediatrics	4	4	0	+0.0%	+1
Consultant Pathology	1	1	0	+0.0%	
Consultant Radiology	2	2	-0	-0.0%	-2
Consultant Surgery	8	7	-1	-0.1%	-1
Consultants	40	40	+0	+0.0%	+0
Registrar	47	48	+1	+0.0%	+1
Senior Registrar	5	4	-1	-0.2%	-2
Specialist Registrar	2	2	-0	-0.0%	+1
Registrars	54	54	+0	+0.0%	-1
Interns	25	26	+1	+0.0%	+9
Senior House Officer	57	54	-3	-0.0%	+2
SHO/ Interns	82	80	-2	-0.0%	+0
Medical & Dental	176	174	-2	-2	-1
Clinical Nurse/ Midwife Manager	99	99	-0	-0.0%	+4
Director Nursing/Midwifery, Assistant	9	9	-0	-0.0%	
Director of Nursing/Midwifery	3	3	+0	+0.0%	+1
Nurse/ Midwife Manager	111	111	-0	-0.0%	+8
Advanced Nurse/ Midwife Practitioner	10	10	+0	+0.0%	+6
Clinical Nurse/ Midwife Specialist	12	12	-0	-0.0%	+3
Nurse/ Midwife Specialist & AN/MP	22	22	-0	-0.0%	+2
Staff Midwives	20	21	+1	+0.0%	-6
Staff Nurses [General/ Children's]	341	337	-4	-0.0%	+18
Staff Nurse/ Staff Midwife	361	358	-3	-0.0%	-14
Pre-registration Nurse/ Midwife Intern	22	22	+0	+0.0%	+18
Pre-registration Nurse Intern (COVID-19)		0	+0	-1.0%	+0
Nursing/ Midwifery awaiting registration				-1.0%	
Nursing/ Midwifery Student	22	22	+0	+0.0%	+17
Other Nursing/ Midwifery	1	1	0	+0.0%	
Nursing/ Midwifery other	1	1	0	+0.0%	
Nursing & Midwifery	517	514	-3	-3	+12
Dietitians	6	5	-1	-0.1%	-0
Occupational Therapists	7	6	-1	-0.1%	+3
Physiotherapists	16	16	-0	-0.0%	+2
Podiatrists & Chiropodists	1	1	0	+0.0%	
Speech & Language Therapists	6	6	-1	-0.1%	+3
Therapy Professions	36	34	-2	-0.1%	-1
Biochemists	1	1	0	+0.0%	
Clinical Engineering	1	1	0	+0.0%	-0
Clinical Measurement	4	4	-0	-0.1%	-0
Phlebotomists	5	5	-0	-0.0%	+1
Physicists	1	1	0	+0.0%	-0
Radiographers	35	36	+2	+0.0%	+14
Medical Science	40	41	+1	+0.0%	+6
Health Science/ Diagnostics	86	88	+2	+0.0%	+5
Social Workers	2	2	0	+0.0%	+1

Social Workers	2	2	0	+0.0%	+1
Pharmacy	13	13	-1	-0.0%	+2
Pharmacy	13	13	-1	-0.0%	-0
HSCP Trainees/ Students	2	1	-1	-0.5%	-1
H&SC, Other	2	1	-1	-0.5%	-1
Health & Social Care Professionals	139	138	-1	-1	+3
Executive Management	1	1	0	+0.0%	
Senior Management (VIII & GM)	3	3	0	+0.0%	
Management (VIII & above)	4	4	0	+0.0%	+1
Middle Management (V-VII)	21	20	-1	-0.0%	+8
Administrative/ Supervisory (V to VII)	21	20	-1	-0.0%	+1
General Administrative (III & IV)	131	134	+3	+0.0%	+4
Clerical (III & IV)	131	134	+3	+0.0%	+6
Management & Administrative	155	158	+3	+3	+8
Catering	18	18	-0	-0.0%	-0
Household Services	92	94	+2	+0.0%	+2
Other Labs & Associated	11	11	-0	-0.0%	+4
Other Support	9	9	-0	-0.0%	-0
Portering	53	53	+0	+0.0%	+10
Support	184	185	+1	+0.0%	+6
General Support	184	185	+1	+1	+6
HCA, Nurse's Aide, etc.	86	86	+0	+0.0%	+26
HCA (Student Nurse/Midwife COVID-19)		0	+0	-1.0%	+0
Health Care Assistants	86	87	+0	+0.0%	+12
Other Care Grades	0	1	+1	+3.0%	+1
Care, other	0	1	+1	+3.0%	+1
Patient & Client Care	87	88	+1	+1	+13

UH Waterford

Jul 2021 (Dec 2020 figure: 2,103)	WTE Jun 2021	WTE Jul 2021	WTE change since Jun 21	% change since Jun 21	WTE change since Dec 19
Overall	2,135	2,160	+25	+1.2%	+57
<i>Consultant Anaesthesia</i>	13	14	+1	+0.1%	+2
<i>Consultant Emergency Medicine</i>	4	4	-0	-0.1%	-0
<i>Consultant Medicine</i>	35	36	+1	+0.0%	+3
<i>Consultant Obstetrics & Gynaecology</i>	6	6	0	+0.0%	+1
<i>Consultant Paediatrics</i>	7	7	+0	+0.0%	+2
<i>Consultant Pathology</i>	13	13	0	+0.0%	+3
<i>Consultant Radiology</i>	9	9	+0	+0.0%	+0
<i>Consultant Surgery</i>	35	34	-0	-0.0%	+3
Consultants	121	123	+2	+0.0%	+4
<i>Registrar</i>	64	70	+6	+0.1%	+10
<i>Senior Registrar</i>	6	6	0	+0.0%	-1
<i>Specialist Registrar</i>	54	52	-2	-0.0%	+9
Registrars	124	128	+4	+0.0%	+12
<i>Interns</i>	28	28	0	+0.0%	+9
<i>Senior House Officer</i>	98	103	+5	+0.0%	+11
SHO/ Interns	126	131	+5	+0.0%	-1
<i>Other Medical</i>	1	1	+0	+0.5%	-0
Medical/ Dental, other	1	1	+0	+0.5%	-0
Medical & Dental	372	383	+11	+11	+15
<i>Clinical Nurse/ Midwife Manager</i>	133	137	+4	+0.0%	+0
<i>Director Nursing/Midwifery, Assistant</i>	14	12	-1	-0.1%	+1
<i>Director of Nursing/Midwifery</i>	3	2	-1	-0.3%	-1
Nurse/ Midwife Manager	149	151	+2	+0.0%	-0
<i>Advanced Nurse/ Midwife Practitioner</i>	14	16	+2	+0.1%	+9
<i>Clinical Nurse/ Midwife Specialist</i>	29	28	-1	-0.0%	+1
Nurse/ Midwife Specialist & AN/MP	44	44	+1	+0.0%	+1
<i>Staff Midwives</i>	41	41	0	+0.0%	+1
<i>Staff Nurses [General/ Children's]</i>	568	577	+9	+0.0%	+74
Staff Nurse/ Staff Midwife	609	618	+9	+0.0%	+13
<i>Pre-registration Nurse/ Midwife Intern</i>	15	14	-0	-0.0%	+14
<i>Pre-registration Nurse Intern (COVID-19)</i>				-1.0%	
<i>Nursing/ Midwifery awaiting registration</i>				-1.0%	-6
Nursing/ Midwifery Student	15	14	-0	-0.0%	+13
<i>Nursing Education/Clinical</i>	5	5	0	+0.0%	-0
Nursing/ Midwifery other	5	5	0	+0.0%	-0
Nursing & Midwifery	822	833	+11	+11	+26
<i>Dietitians</i>	15	15	+1	+0.1%	+7
<i>Occupational Therapists</i>	11	11	0	+0.0%	-1
<i>Orthoptists</i>	3	3	0	+0.0%	
<i>Physiotherapists</i>	29	30	+1	+0.0%	+3
<i>Podiatrists & Chiropodists</i>				-1.0%	-1
<i>Speech & Language Therapists</i>	5	6	+1	+0.1%	+2
Therapy Professions	63	65	+2	+0.0%	-1
<i>Audiology</i>	2	2	0	+0.0%	+0
<i>Clinical Engineering</i>	6	7	+1	+0.1%	+3
<i>Clinical Measurement</i>	20	20	+0	+0.0%	+4
<i>Phlebotomists</i>	5	4	-0	-0.1%	-3
<i>Physicists</i>	2	2	0	+0.0%	+0
<i>Radiographers</i>	47	52	+5	+0.1%	+10
<i>Medical Science</i>	106	105	-1	-0.0%	+5

Health Science/ Diagnostics	187	192	+4	+0.0%	+8
<i>Social Workers</i>	3	3	0	+0.0%	+0
Social Workers	3	3	0	+0.0%	-1
<i>Pharmacy</i>	36	34	-2	-0.1%	+10
Pharmacy	36	34	-2	-0.1%	+2
<i>HSCP Trainees/ Students</i>	3		-3	-1.0%	-5
H&SC, Other	3		-3	-1.0%	-4
Health & Social Care Professionals	292	294	+1	+1	+5
<i>Executive Management</i>	1	1	0	+0.0%	
<i>Senior Management (VIII & GM)</i>	6	6	-0	-0.0%	-0
Management (VIII & above)	7	7	-0	-0.0%	-1
<i>Middle Management (V-VII)</i>	67	69	+2	+0.0%	+20
Administrative/ Supervisory (V to VII)	67	69	+2	+0.0%	+6
<i>General Administrative (III & IV)</i>	265	262	-3	-0.0%	-6
Clerical (III & IV)	265	262	-3	-0.0%	-1
Management & Administrative	339	338	-2	-2	+4
<i>Catering</i>	9	9	-0	-0.0%	+2
<i>Household Services</i>	84	83	-1	-0.0%	-7
<i>Other Labs & Associated</i>	25	32	+7	+0.3%	+10
<i>Other Support</i>	21	21	-0	-0.0%	-3
<i>Portering</i>	65	65	+1	+0.0%	+8
Support	203	209	+6	+0.0%	+9
<i>Maintenance</i>	19	18	-1	-0.1%	+2
Maintenance/ Technical	19	18	-1	-0.1%	+0
General Support	222	228	+5	+5	+9
<i>HCA, Nurse's Aide, etc.</i>	82	81	-1	-0.0%	+8
<i>Health & Social Care Assistants</i>	3	2	-1	-0.3%	-2
Health Care Assistants	85	83	-3	-0.0%	-3
<i>Other Care Grades</i>	2	2	0	+0.0%	
Care, other	2	2	0	+0.0%	+0
Patient & Client Care	87	85	-3	-3	-3

South Tipperary General

Jul 2021 (Dec 2020 figure: 968)	WTE Jun 2021	WTE Jul 2021	WTE change since Jun 21	% change since Jun 21	WTE change since Dec 19
Overall	1,056	1,071	+15	+1.4%	+103
Consultant Anaesthesia	5	5	+0	+0.1%	+0
Consultant Emergency Medicine	3	2	-1	-0.3%	+1
Consultant Medicine	12	12	-0	-0.0%	+0
Consultant Obstetrics & Gynaecology	4	4	0	+0.0%	+1
Consultant Paediatrics	5	6	+1	+0.2%	+2
Consultant Radiology	4	4	0	+0.0%	+1
Consultant Surgery	3	3	0	+0.0%	
Consultants	35	36	+1	+0.0%	+1
Registrar	34	34	+1	+0.0%	-0
Senior Registrar	11	11	0	+0.0%	+2
Specialist Registrar	3	3	0	+0.0%	+1
Registrars	48	48	+1	+0.0%	-0
Interns	17	20	+3	+0.1%	+11
Senior House Officer	42	40	-2	-0.0%	-2
SHO/ Interns	59	59	+1	+0.0%	+5
Other Medical	0	0	0	+0.0%	-1
Medical/ Dental, other	0	0	0	+0.0%	
Medical & Dental	142	144	+2	+2	+6
Clinical Nurse/ Midwife Manager	70	69	-1	-0.0%	-3
Director Nursing/Midwifery, Assistant	9	10	+1	+0.1%	+4
Director of Nursing/Midwifery	2	2	0	+0.0%	
Nurse/ Midwife Manager	81	81	-0	-0.0%	+4
Advanced Nurse/ Midwife Practitioner	5	5	+0	+0.0%	+3
Clinical Nurse/ Midwife Specialist	18	18	+0	+0.0%	+3
Nurse/ Midwife Specialist & AN/MP	23	23	+0	+0.0%	+2
Staff Midwives	20	19	-1	-0.0%	-7
Staff Nurses [General/ Children's]	314	338	+24	+0.1%	+78
Staff Nurse/ Staff Midwife	334	358	+24	+0.1%	+39
Pre-registration Nurse/ Midwife Intern	4	4	0	+0.0%	+4
Nursing/ Midwifery awaiting registration	23	2	-21	-0.9%	+2
Nursing/ Midwifery Student	27	6	-21	-0.8%	-5
Nursing & Midwifery	465	468	+3	+3	+40
Dietitians	6	7	+1	+0.1%	+3
Occupational Therapists	3	3	0	+0.0%	+2
Physiotherapists	16	16	+0	+0.0%	+3
Podiatrists & Chiropodists	1	1	0	+0.0%	
Speech & Language Therapists	3	3	+0	+0.0%	-1
Therapy Professions	29	30	+1	+0.0%	+2
Clinical Engineering	1	1	0	+0.0%	
Clinical Measurement	6	6	-0	-0.0%	+3
Radiographers	24	24	-0	-0.0%	+12
Medical Science	11	12	+0	+0.0%	+1
Health Science/ Diagnostics	43	43	-0	-0.0%	+1
Social Workers	3	3	0	+0.0%	+2
Social Workers	3	3	0	+0.0%	-0
Pharmacy	15	14	-0	-0.0%	+3
Pharmacy	15	14	-0	-0.0%	+2
HSCP Trainees/ Students		1	+1	-1.0%	+1
H&SC, Other		1	+1	-1.0%	+1

Health & Social Care Professionals	90	91	+1	+1	+6
<i>Executive Management</i>	1	1	0	+0.0%	
<i>Senior Management (VIII & GM)</i>	2	2	0	+0.0%	+1
Management (VIII & above)	3	3	0	+0.0%	+2
<i>Middle Management (V-VII)</i>	28	27	-1	-0.0%	+10
Administrative/ Supervisory (V to VII)	28	27	-1	-0.0%	+1
<i>General Administrative (III & IV)</i>	111	112	+1	+0.0%	+2
Clerical (III & IV)	111	112	+1	+0.0%	+4
Management & Administrative	142	142	+1	+1	+7
<i>Household Services</i>	94	101	+7	+0.1%	+24
<i>Other Labs & Associated</i>	3	3	0	+0.0%	+1
<i>Other Support</i>	10	10	+0	+0.0%	-0
<i>Portering</i>	21	21	+0	+0.0%	+18
Support	128	135	+7	+0.1%	+26
<i>Maintenance</i>	6	6	-0	-0.0%	+2
Maintenance/ Technical	6	6	-0	-0.0%	-0
General Support	134	140	+7	+7	+26
<i>HCA, Nurse's Aide, etc.</i>	84	86	+2	+0.0%	+20
<i>Health & Social Care Assistants</i>				-1.0%	-1
<i>HCA (Student Nurse/Midwife COVID-19)</i>				-1.0%	
Health Care Assistants	84	86	+2	+0.0%	+19
<i>Other Care Grades</i>	1		-1	-1.0%	-1
Care, other	1		-1	-1.0%	-0
Patient & Client Care	84	86	+2	+2	+19

Lourdes Orthopaedic Kilcreene

Jul 2021 (Dec 2020 figure: 70)	WTE Jun 2021	WTE Jul 2021	WTE change since Jun 21	% change since Jun 21	WTE change since Dec 19
Overall	72	71	-1	-1.3%	+1
<i>Consultant Anaesthesia</i>	2	1	-1	-0.5%	-1
Consultants	2	1	-1	-0.5%	-1
<i>Registrar</i>		1	+1	-1.0%	+1
Registrars		1	+1	-1.0%	+1
<i>Senior House Officer</i>	6	6	0	+0.0%	+1
SHO/ Interns	6	6	0	+0.0%	+1
Medical & Dental	8	8			+1
<i>Clinical Nurse/ Midwife Manager</i>	6	6	-0	-0.0%	-0
<i>Director Nursing/Midwifery, Assistant</i>	1	1	0	+0.0%	
<i>Director of Nursing/Midwifery</i>	1	1	0	+0.0%	
Nurse/ Midwife Manager	8	8	-0	-0.0%	-0
<i>Staff Nurses [General/ Children's]</i>	30	29	-0	-0.0%	+1
Staff Nurse/ Staff Midwife	30	29	-0	-0.0%	+0
Nursing & Midwifery	37	37	-0	-0	+0
<i>General Administrative (III & IV)</i>	7	7	0	+0.0%	+1
Clerical (III & IV)	7	7	0	+0.0%	+0
Management & Administrative	7	7			+0
<i>Household Services</i>	14	14	-0	-0.0%	-3
<i>Other Support</i>	1	1	0	+0.0%	
<i>Portering</i>	4	4	-0	-0.0%	+2
Support	19	19	-0	-0.0%	-0
General Support	19	19	-0	-0	-0

South/South West Hospital Group Employment by Grade Group & Staff Category: July 2021

Jul 2021 (Dec 2020 figure: 11,288)	WTE Jun 2021	WTE Jul 2021	WTE change since Jun 21	% change since Jun 21	WTE change since Dec 20	WTE change since Jul 20
Overall	11,778	11,897	+120	+1.0%	+609	+533
Consultant Anaesthesia	75	76	+1	+0.7%	+2	+2
Consultant Emergency Medicine	17	16	-1	-5.7%	+0	+1
Consultant Medicine	159	159	+0	+0.2%	+4	+11
Consultant Obstetrics & Gynaecology	31	30	-1	-2.7%	+0	+2
Consultant Paediatrics	37	39	+1	+3.8%	+1	+6
Consultant Pathology	45	45	+0	+1.1%	+1	+1
Consultant Radiology	46	45	-0	-0.7%	-1	-1
Consultant Surgery	108	108	+0	+0.2%	+2	+2
Consultants	517	518	+1	+0.2%	+10	+23
Registrar	314	324	+10	+3.2%	+22	+5
Senior Registrar	29	28	-1	-3.1%	-2	-4
Specialist Registrar	196	198	+2	+1.2%	+0	+23
Registrars	539	550	+11	+2.1%	+20	+25
Interns	186	195	+9	+4.8%	+7	-102
Senior House Officer	422	407	-15	-3.5%	-20	+38
SHO/ Interns	607	601	-6	-1.0%	-14	-64
Other Medical	10	9	-1	-12.2%	+1	+1
Medical/ Dental, other	10	9	-1	-12.2%	+1	+1
Medical & Dental	1,674	1,679	+5	+0.3%	+18	-16
Clinical Nurse/ Midwife Manager	773	782	+10	+1.3%	+17	-6
Director Nursing/Midwifery, Assistant	80	82	+2	+2.1%	+6	+7
Director of Nursing/Midwifery	16	16	+0	+0.8%	+1	+2
Nurse/ Midwife Manager	869	880	+12	+1.3%	+24	+3
Advanced Nurse/ Midwife Practitioner	69	69	+1	+0.8%	+15	+24
Clinical Nurse/ Midwife Specialist	140	141	+1	+0.8%	+1	+13
Nurse/ Midwife Specialist & AN/MP	209	210	+2	+0.8%	+16	+37
Staff Midwives	293	294	+1	+0.3%	+14	+23
Staff Nurses [General/ Children's]	3,151	3,174	+24	+0.7%	+121	+256
Staff Nurse [Intellectual Disability]	1		-1	-100.0%		
Staff Nurse/ Staff Midwife	3,445	3,469	+23	+0.7%	+134	+279
Pre-registration Nurse/ Midwife Intern	88	100	+12	+14.0%	+100	+100
Pre-registration Nurse Intern (COVID-19)	3	2	-1	-22.7%	-21	-178
Post-registration Nurse/ Midwife Student	20	19	-1	-3.2%	-3	-5
Nursing/ Midwifery awaiting registration	27	6	-21	-76.5%	-11	+6
Nursing/ Midwifery Student	138	128	-10	-7.1%	+66	-76
Nursing Education/Clinical	14	14	-0	-0.3%	-0	+0
Other Nursing/ Midwifery	1	1				
Nursing/ Midwifery other	15	15	-0	-0.3%	-0	+0
Public Health Nurse	0	0			+0	+0
Public Health Nurse	0	0			+0	+0

Jul 2021 (Dec 2020 figure: 11,288)	WTE Jun 2021	WTE Jul 2021	WTE change since Jun 21	% change since Jun 21	WTE change since Dec 20	WTE change since Jul 20
Overall	11,778	11,897	+120	+1.0%	+609	+533
Nursing & Midwifery	4,676	4,703	+27	+0.6%	+240	+243
Dietitians	73	75	+3	+3.7%	+7	+7
Occupational Therapists	65	63	-2	-3.4%	+8	+11
Orthoptists	4	4				
Physiotherapists	190	190	+0	+0.3%	+7	+6
Podiatrists & Chiropodists	6	5	-1	-11.0%	+0	+0
Speech & Language Therapists	44	45	+1	+1.9%	+4	+5
Therapy Professions	381	382	+1	+0.3%	+25	+29
Audiology	6	6			+0	
Biochemists	8	8			-0	+2
Clinical Engineering	25	26	+0	+0.2%	-3	-3
Clinical Measurement	65	65	-0	-0.0%	+3	+4
Dosimetrists	10	10	+0	+1.0%	+2	+2
Perfusionists	4	4	-0	-2.4%	-0	-1
Phlebotomists	43	44	+0	+1.0%	+2	+1
Physicists	32	32	-0	-0.1%	+6	+7
Radiation Therapists	40	40	-0	-0.5%	-2	+0
Radiographers	265	268	+3	+1.2%	+25	+34
Medical Science	385	384	-0	-0.1%	-0	-8
Health Science/ Diagnostics	883	886	+3	+0.4%	+32	+39
Social Workers	38	39	+1	+2.2%	+2	+8
Psychologists	2	2	+1	+58.7%	+1	+1
Pharmacy	169	168	-1	-0.4%	+18	+22
HSCP Trainees/ Students	8	2	-6	-73.3%	-17	
Other Health & Social Care	2	2			-1	-1
Play Therapists/ Specialists	1	1			+1	+1
Vaccinators	15	24	+9	+62.2%	+24	+24
H&SC, Other	26	29	+4	+15.2%	+8	+24
Health & Social Care Professionals	1,498	1,507	+9	+0.6%	+86	+124
Executive Management	10	10			+2	+1
Senior Management (VIII & GM)	53	52	-1	-1.0%	+5	+4
Management (VIII & above)	63	62	-1	-0.8%	+7	+5
Administrative/ Supervisory (V to VII)	343	347	+4	+1.1%	+25	+48
Clerical (III & IV)	1,321	1,340	+19	+1.4%	+70	+84
Management & Administrative	1,727	1,749	+23	+1.3%	+102	+137
Catering	80	79	-1	-1.6%	-3	-2
Household Services	730	760	+30	+4.1%	+65	+37
Other Labs & Associated	91	108	+17	+18.7%	+39	+38
Other Support	118	119	+1	+0.9%	-8	+3
Portering	380	388	+9	+2.4%	+40	+47
Support	1,399	1,455	+56	+4.0%	+134	+124
Maintenance/ Technical	43	42	-1	-2.3%	+1	+6

Jul 2021 (Dec 2020 figure: 11,288)	WTE Jun 2021	WTE Jul 2021	WTE change since Jun 21	% change since Jun 21	WTE change since Dec 20	WTE change since Jul 20
Overall	11,778	11,897	+120	+1.0%	+609	+533
General Support	1,442	1,497	+55	+3.8%	+135	+129
HCA, Nurse's Aide, etc.	737	736	-1	-0.2%	+50	+56
Health & Social Care Assistants	9	8	-1	-11.8%	+0	-4
HCA (Student Nurse/Midwife COVID-19)		4	+4	-100.0%	-22	-141
Health Care Assistants	746	748	+1	+0.2%	+28	-89
Care, other	15	15	+0	+0.8%	+0	+5
Patient & Client Care	761	763	+2	+0.2%	+28	-84

Employment by WTE, Headcount, Gender, Full-Time /Part-Time etc.: Jul 2021

South/South West Hospital Group	WTE	Headcount	WTE: no.	% Male	% female	Male WTE: no.	Female WTE: no.	% Total Perm	% Male Perm	% Female Perm	% Total Full Time	% Total Part Time	% Male FT	% Female FT
Overall	11,897	13,741	1.15	21.8%	78.2%	1.06	1.18	69.3%	54.0%	73.5%	69.1%	30.9%	91.8%	62.8%
Consultant Anaesthesia	76	80	1.05	68.8%	31.3%	1.05	1.06	67.5%	67.5%	52.0%	88.8%	11.3%	90.9%	84.0%
Consultant Emergency Medicine	16	18	1.10	94.4%	5.6%	1.10	1.30	50.0%	50.0%	0.0%	88.9%	11.1%	94.1%	0.0%
Consultant Medicine	159	172	1.08	61.0%	39.0%	1.06	1.12	65.1%	65.1%	62.7%	88.4%	11.6%	89.5%	86.6%
Consultant Obstetrics & Gynaecology	30	33	1.10	48.5%	51.5%	1.10	1.09	63.6%	63.6%	64.7%	84.8%	15.2%	87.5%	82.4%
Consultant Paediatrics	39	40	1.04	65.0%	35.0%	1.02	1.07	67.5%	67.5%	64.3%	97.5%	2.5%	100.0%	92.9%
Consultant Pathology	45	51	1.13	39.2%	60.8%	1.20	1.09	64.7%	64.7%	64.5%	88.2%	11.8%	90.0%	87.1%
Consultant Radiology	45	49	1.08	65.3%	34.7%	1.09	1.06	83.7%	83.7%	70.6%	89.8%	10.2%	90.6%	88.2%
Consultant Surgery	108	116	1.08	86.2%	13.8%	1.06	1.19	78.4%	78.4%	75.0%	89.7%	10.3%	92.0%	75.0%
Consultants	518	559	1.08	66.4%	33.6%	1.07	1.10	69.4%	72.5%	63.3%	89.3%	10.7%	91.4%	85.1%
Registrar	324	336	1.04	67.0%	33.0%	1.03	1.05	3.3%	3.3%	2.7%	97.3%	2.7%	97.8%	96.4%
Senior Registrar	28	30	1.06	76.7%	23.3%	1.07	1.00	46.7%	46.7%	57.1%	90.0%	10.0%	87.0%	100.0%
Specialist Registrar	198	204	1.03	49.5%	50.5%	1.02	1.04	1.0%	1.0%	1.9%	97.5%	2.5%	98.0%	97.1%
Registrars	550	570	1.04	61.2%	38.8%	1.03	1.04	4.7%	5.2%	4.1%	97.0%	3.0%	97.1%	96.8%
Interns	195	268	1.38	48.5%	51.5%	1.37	1.38	0.0%	0.0%	0.0%	100.0%	0.0%	100.0%	100.0%
Senior House Officer	407	418	1.03	48.3%	51.7%	1.03	1.03	0.5%	0.5%	0.0%	98.6%	1.4%	98.5%	98.6%
SHO/ Interns	601	686	1.14	48.4%	51.6%	1.14	1.14	0.3%	0.6%	0.0%	99.1%	0.9%	99.1%	99.2%
Other Medical	9	16	1.77	37.5%	62.5%	1.50	1.98	50.0%	50.0%	50.0%	43.8%	56.3%	66.7%	30.0%
Medical/ Dental, other	9	16	1.77	37.5%	62.5%	1.50	1.98	50.0%	50.0%	50.0%	43.8%	56.3%	66.7%	30.0%
Medical & Dental	1,679	1,831	1.09	57.8%	42.2%	1.08	1.11	23.2%	27.6%	17.2%	95.0%	5.0%	95.6%	94.2%
Clinical Nurse/ Midwife Manager	782	895	1.14	6.0%	94.0%	1.09	1.15	96.4%	96.4%	96.6%	59.8%	40.2%	88.9%	57.9%
Director Nursing/Midwifery, Assistant	82	88	1.07	10.2%	89.8%	1.00	1.08	93.2%	93.2%	92.4%	76.1%	23.9%	100.0%	73.4%
Director of Nursing/Midwifery	16	16	1.00	12.5%	87.5%	1.00	1.00	100.0%	100.0%	100.0%	100.0%	0.0%	100.0%	100.0%
Nurse/ Midwife Manager	880	999	1.13	6.5%	93.5%	1.07	1.14	96.2%	95.4%	96.3%	61.9%	38.1%	90.8%	59.9%

Advanced Nurse/ Midwife Practitioner	69	72	1.04	8.3%	91.7%	1.00	1.04	97.2%	97.2%	97.0%	87.5%	12.5%	100.0%	86.4%
Clinical Nurse/ Midwife Specialist	141	168	1.19	3.6%	96.4%	1.01	1.20	96.4%	96.4%	96.3%	51.2%	48.8%	83.3%	50.0%
Nurse/ Midwife Specialist & AN/MP	210	240	1.14	5.0%	95.0%	1.00	1.15	96.7%	100.0%	96.5%	62.1%	37.9%	91.7%	60.5%
Staff Midwives	294	355	1.21	0.8%	99.2%	1.00	1.21	86.5%	86.5%	86.6%	34.6%	65.4%	100.0%	34.1%
Staff Nurses [General/ Children's]	3,174	3,778	1.19	8.1%	91.9%	1.05	1.20	81.0%	81.0%	81.8%	58.0%	42.0%	86.9%	55.5%
Staff Nurse/ Staff Midwife	3,469	4,133	1.19	7.5%	92.5%	1.05	1.20	81.5%	72.1%	82.2%	56.0%	44.0%	87.0%	53.5%
Pre-registration Nurse/ Midwife Intern	100	204	2.03	4.9%	95.1%	2.00	2.04	0.0%	0.0%	0.0%	90.7%	9.3%	70.0%	91.8%
Pre-registration Nurse Intern (COVID-19)	2	3	1.29		100.0%		1.29	0.0%	0.0%	0.0%	100.0%	0.0%		100.0%
Post-registration Nurse/ Midwife Student	19	20	1.04		100.0%		1.04	35.0%	35.0%	35.0%	100.0%	0.0%		100.0%
Nursing/ Midwifery awaiting registration	6	7	1.10		100.0%		1.10	0.0%	0.0%	0.0%	85.7%	14.3%		85.7%
Nursing/ Midwifery Student	128	234	1.82	4.3%	95.7%	2.00	1.82	3.0%	0.0%	3.1%	91.5%	8.5%	70.0%	92.4%
Nursing Education/Clinical	14	18	1.28	5.6%	94.4%	1.00	1.30	88.9%	88.9%	88.2%	44.4%	55.6%	100.0%	41.2%
Other Nursing/ Midwifery	1	1	1.00		100.0%		1.00	100.0%	100.0%	100.0%	100.0%	0.0%		100.0%
Nursing/ Midwifery other	15	19	1.26	5.3%	94.7%	1.00	1.28	89.5%	100.0%	88.9%	47.4%	52.6%	100.0%	44.4%
Public Health Nurse	0	1	4.76		100.0%		4.76	0.0%	0.0%	0.0%	0.0%	100.0%		0.0%
Public Health Nurse	0	1	4.76		100.0%		4.76	0.0%		0.0%	0.0%	100.0%		0.0%
Nursing & Midwifery	4,703	5,626	1.20	7.0%	93.0%	1.06	1.21	81.5%	75.0%	82.0%	58.7%	41.3%	87.4%	56.6%
Dietitians	75	91	1.21	2.2%	97.8%	1.00	1.22	73.6%	73.6%	73.0%	72.5%	27.5%	100.0%	71.9%
Occupational Therapists	63	71	1.13	11.3%	88.7%	1.08	1.13	60.6%	60.6%	60.3%	76.1%	23.9%	75.0%	76.2%
Orthoptists	4	4	1.14	25.0%	75.0%	1.00	1.20	100.0%	100.0%	100.0%	75.0%	25.0%	100.0%	66.7%
Physiotherapists	190	224	1.18	18.8%	81.3%	1.03	1.22	72.8%	72.8%	76.9%	71.9%	28.1%	88.1%	68.1%
Podiatrists & Chiropodists	5	7	1.31	14.3%	85.7%	1.00	1.38	85.7%	85.7%	100.0%	28.6%	71.4%	0.0%	33.3%
Speech & Language Therapists	45	51	1.14		100.0%		1.14	76.5%	76.5%	76.5%	68.6%	31.4%		68.6%
Therapy Professions	382	448	1.17	12.1%	87.9%	1.04	1.19	71.9%	57.4%	73.9%	71.7%	28.3%	85.2%	69.8%
Audiology	6	7	1.17	28.6%	71.4%	1.00	1.25	71.4%	71.4%	60.0%	71.4%	28.6%	100.0%	60.0%
Biochemists	8	8	1.04		100.0%		1.04	75.0%	75.0%	75.0%	62.5%	37.5%		62.5%
Clinical Engineering	26	28	1.10	75.0%	25.0%	1.06	1.24	85.7%	85.7%	42.9%	96.4%	3.6%	100.0%	85.7%
Clinical Measurement	65	71	1.09	23.9%	76.1%	1.00	1.12	76.1%	76.1%	74.1%	84.5%	15.5%	94.1%	81.5%
Dosimetrists	10	12	1.21	8.3%	91.7%	4.00	1.13	75.0%	75.0%	81.8%	66.7%	33.3%	100.0%	63.6%

Perfusionists	4	4	1.08	50.0%	50.0%	1.10	1.06	75.0%	75.0%	50.0%	50.0%	50.0%	50.0%
Phlebotomists	44	70	1.59	12.9%	87.1%	1.47	1.61	52.9%	52.9%	57.4%	44.3%	55.7%	39.3%
Physicists	32	35	1.09	65.7%	34.3%	1.05	1.15	82.9%	82.9%	66.7%	94.3%	5.7%	83.3%
Radiation Therapists	40	44	1.11	6.8%	93.2%	1.00	1.12	72.7%	72.7%	73.2%	77.3%	22.7%	75.6%
Radiographers	268	305	1.14	19.3%	80.7%	1.03	1.17	80.0%	80.0%	79.7%	69.5%	30.5%	65.4%
Medical Science	384	433	1.13	18.5%	81.5%	1.03	1.15	80.1%	80.1%	81.0%	75.8%	24.2%	71.1%
Health Science/ Diagnostics	886	1,017	1.15	21.3%	78.7%	1.05	1.18	77.7%	79.7%	77.1%	73.3%	26.7%	67.9%
Social Workers	39	45	1.15	13.3%	86.7%	1.02	1.17	62.2%	83.3%	59.0%	75.6%	24.4%	71.8%
Psychologists	2	3	1.26		100.0%		1.26	100.0%		100.0%	66.7%	33.3%	66.7%
Pharmacy	168	195	1.16	10.3%	89.7%	1.09	1.17	68.2%	85.0%	66.3%	69.2%	30.8%	67.4%
HSCP Trainees/ Students	2	3	1.50		100.0%		1.50	0.0%	0.0%	0.0%	100.0%	0.0%	100.0%
Other Health & Social Care	2	2	1.00	50.0%	50.0%	1.00	1.00	100.0%	100.0%	100.0%	100.0%	0.0%	100.0%
Play Therapists/ Specialists	1	1	1.00		100.0%		1.00	100.0%	100.0%	100.0%	100.0%	0.0%	100.0%
Vaccinators	24	76	3.11	17.1%	82.9%	2.39	3.31	5.3%	5.3%	6.3%	6.6%	93.4%	6.3%
H&SC, Other	29	82	2.78	17.1%	82.9%	2.17	2.95	8.5%	7.1%	8.8%	13.4%	86.6%	13.2%
Health & Social Care	1,507	1,790	1.19	17.4%	82.6%	1.07	1.22	71.7%	73.0%	71.4%	69.7%	30.3%	65.9%
Executive Management	10	10	1.00	40.0%	60.0%	1.00	1.00	100.0%	100.0%	100.0%	100.0%	0.0%	100.0%
Senior Management (VIII & GM)	52	53	1.02	32.1%	67.9%	1.03	1.01	94.3%	94.3%	97.2%	96.2%	3.8%	94.4%
Management (VIII & above)	62	63	1.02	33.3%	66.7%	1.02	1.01	95.2%	90.5%	97.6%	96.8%	3.2%	95.2%
Administrative/ Supervisory (V to VII)	347	382	1.10	19.4%	80.6%	1.01	1.13	91.1%	85.1%	92.5%	71.2%	28.8%	64.6%
Clerical (III & IV)	1,340	1,522	1.14	13.2%	86.8%	1.04	1.15	69.8%	59.2%	71.5%	69.6%	30.4%	65.9%
Management & Administrative	1,749	1,967	1.12	15.0%	85.0%	1.03	1.14	74.8%	67.9%	76.0%	70.8%	29.2%	66.4%
Catering	79	86	1.09	29.1%	70.9%	1.02	1.12	77.9%	77.9%	78.7%	77.9%	22.1%	68.9%
Household Services	760	876	1.15	20.9%	79.1%	1.10	1.17	63.8%	63.8%	69.4%	65.3%	34.7%	59.7%
Other Labs & Associated	108	117	1.08	29.9%	70.1%	1.03	1.11	34.2%	34.2%	36.6%	88.0%	12.0%	84.1%
Other Support	119	133	1.12	33.1%	66.9%	1.03	1.17	87.2%	87.2%	89.9%	61.7%	38.3%	43.8%
Portering	388	405	1.04	95.1%	4.9%	1.04	1.14	64.9%	64.9%	35.0%	92.1%	7.9%	85.0%
Support	1,455	1,617	1.11	41.6%	58.4%	1.05	1.16	64.6%	59.4%	68.4%	74.0%	26.0%	61.5%
Maintenance	39	40	1.03	100.0%		1.03		95.0%	95.0%		95.0%	5.0%	95.0%
Technical Services	3	3	1.00	100.0%		1.00		0.0%	0.0%		100.0%	0.0%	100.0%

Maintenance/ Technical	42	43	1.03	100.0%		1.03		88.4%	88.4%	#DIV/0	95.3%	4.7%	95.3%	
General Support	1,497	1,660	1.11	43.1%	56.9%	1.05	1.16	65.2%	61.1%	68.4%	74.6%	25.4%	91.9%	61.5%
HCA, Nurse's Aide, etc.	736	830	1.13	25.1%	74.9%	1.05	1.16	79.0%	79.0%	79.4%	67.2%	32.8%	84.1%	61.6%
Health & Social Care Assistants	8	9	1.09	33.3%	66.7%	1.00	1.14	55.6%	55.6%	50.0%	66.7%	33.3%	100.0%	50.0%
HCA (Student Nurse/Midwife COVID-19)	4	7	1.86	14.3%	85.7%	1.47	1.95	0.0%	0.0%	0.0%	57.1%	42.9%	100.0%	50.0%
Health Care Assistants	748	846	1.13	25.1%	74.9%	1.06	1.16	78.1%	77.4%	78.4%	67.1%	32.9%	84.4%	61.4%
Other Care Grades	15	21	1.37	52.4%	47.6%	1.56	1.21	57.1%	57.1%	100.0%	42.9%	57.1%	45.5%	40.0%
Care, other	15	21	1.37	52.4%	47.6%	1.56	1.21	57.1%	18.2%	100.0%	42.9%	57.1%	45.5%	40.0%
Patient & Client Care	763	867	1.14	25.7%	74.3%	1.07	1.16	77.6%	74.4%	78.7%	66.6%	33.4%	82.5%	61.0%

Employment by WTE, Headcount, Gender, Full-Time /Part-Time etc.: Jul 2021

South/South West Hospital Group	WTE	Headcount	WTE: no.	% Male	% female	Male WTE: no.	Female WTE: no.	% Total Perm	% Male Perm	% Female Perm	% Total Full Time	% Total Part Time	% Male FT	% Female FT
Overall	11,897	13,741	1.15	21.8%	78.2%	1.06	1.18	69.3%	54.0%	73.5%	69.1%	30.9%	91.8%	62.8%
Bantry General	293	347	1.18	15.6%	84.4%	1.13	1.19	79.0%	79.0%	82.9%	65.1%	34.9%	88.9%	88.9%
Mallow General	250	298	1.19	13.8%	86.2%	1.06	1.21	70.1%	70.1%	72.4%	67.4%	32.6%	95.1%	95.1%
Cork University	4,537	5,179	1.14	23.0%	77.0%	1.06	1.17	64.3%	64.3%	68.6%	75.4%	24.6%	96.0%	96.0%
Mercy University	1,302	1,491	1.15	22.7%	77.3%	1.03	1.18	68.5%	68.5%	72.2%	63.0%	37.0%	91.1%	91.1%
Hospital Group HQ	105	182	1.74	19.2%	80.8%	1.51	1.80	27.5%	27.5%	29.3%	38.5%	61.5%	45.7%	45.7%
South Infirmary Victoria University	852	1,029	1.21	19.9%	80.1%	1.09	1.24	73.3%	73.3%	76.7%	47.5%	52.5%	71.2%	71.2%
UH Kerry	1,257	1,465	1.17	20.3%	79.7%	1.07	1.19	64.1%	64.1%	68.0%	71.2%	28.8%	94.6%	94.6%
UH Waterford	2,160	2,454	1.14	24.2%	75.8%	1.06	1.16	80.9%	80.9%	86.5%	72.3%	27.7%	93.3%	93.3%
South Tipperary General	1,071	1,213	1.13	19.0%	81.0%	1.06	1.15	72.7%	72.7%	77.1%	67.0%	33.0%	89.6%	89.6%
Lourdes Orthopaedic Kilcreene	71	83	1.17	15.7%	84.3%	1.00	1.21	91.6%	91.6%	94.3%	47.0%	53.0%	92.3%	92.3%

South/South West Hospital Group Employment by Grade Group & Staff Category: July 2021

Jul 2021 (Dec 2019 figure: 10,527)	WTE Dec 2016	WTE Dec 2017	WTE Dec 2018	WTE Dec 2019	WTE Dec 2020	WTE Jun 2021	WTE Jul 2021
Overall	9,585	9,979	10,386	10,527	11,288	11,778	11,897
Consultant Anaesthesia	4.9%	4.9%	4.7%	4.8%	4.4%	4.5%	4.5%
Consultant Emergency Medicine	1.1%	1.2%	1.0%	1.0%	1.0%	1.0%	1.0%
Consultant Medicine	8.9%	9.1%	9.3%	9.2%	9.3%	9.5%	9.5%
Consultant Obstetrics & Gynaecology	1.7%	1.8%	1.8%	1.8%	1.8%	1.8%	1.8%
Consultant, Other				0.0%			
Consultant Paediatrics	1.9%	1.9%	1.9%	1.9%	2.3%	2.2%	2.3%
Consultant Pathology	2.7%	2.8%	2.7%	2.6%	2.6%	2.7%	2.7%
Consultant Radiology	3.2%	3.2%	3.0%	3.0%	2.8%	2.7%	2.7%
Consultant Surgery	6.6%	6.4%	6.8%	6.8%	6.4%	6.4%	6.4%
Consultants	31.1%	31.4%	31.1%	31.2%	30.6%	30.9%	30.9%
Registrar	18.1%	19.1%	19.8%	20.0%	18.2%	18.8%	19.3%
Senior Registrar	2.5%	2.6%	2.3%	2.0%	1.8%	1.8%	1.7%
Specialist Registrar	11.6%	11.1%	10.2%	11.2%	11.9%	11.7%	11.8%
Registrars	32.1%	32.7%	32.3%	33.2%	31.9%	32.8%	32.8%
Interns	10.3%	10.0%	9.8%	9.4%	11.3%	11.1%	11.6%
Senior House Officer	26.3%	25.6%	26.1%	25.6%	25.7%	25.2%	24.2%
SHO/ Interns	36.6%	35.5%	35.9%	35.0%	37.0%	35.8%	35.8%
Other Medical	0.3%	0.4%	0.7%	0.6%	0.5%	0.6%	0.5%
Medical/ Dental, other	0.3%	0.4%	0.7%	0.6%	0.5%	0.5%	0.5%
Medical & Dental	14.4%	14.5%	14.3%	14.6%	14.7%	14.1%	14.1%
Clinical Nurse/ Midwife Manager	15.3%	16.1%	16.5%	18.4%	17.2%	16.5%	16.6%
Director Nursing/Midwifery, Assistant	1.5%	1.6%	1.7%	1.7%	1.7%	1.7%	1.7%
Director of Nursing/Midwifery	0.3%	0.3%	0.3%	0.3%	0.3%	0.3%	0.3%
Nurse/ Midwife Manager	17.1%	18.0%	18.5%	20.5%	19.2%	18.7%	18.7%
Advanced Nurse/ Midwife Practitioner	0.5%	0.5%	0.5%	0.6%	1.2%	1.5%	1.5%
Clinical Nurse/ Midwife Specialist	3.1%	2.9%	2.8%	2.9%	3.1%	3.0%	3.0%
Nurse/ Midwife Specialist & AN/MP	3.6%	3.5%	3.3%	3.5%	4.3%	4.5%	4.5%
Staff Midwives	9.4%	8.4%	8.0%	7.1%	6.3%	6.3%	6.3%
Staff Nurses [General/ Children's]	68.1%	67.1%	68.3%	67.0%	68.4%	67.4%	67.5%
Staff Nurse [Intellectual Disability]						0.0%	
Staff Nurse/ Staff Midwife	77.5%	75.5%	76.3%	74.1%	74.7%	73.8%	73.8%
Pre-registration Nurse/ Midwife Intern	0.8%	0.6%	0.3%	0.7%	0.0%	1.9%	2.1%
Pre-registration Nurse Intern (COVID-19)					0.5%	0.1%	0.0%
Post-registration Nurse/ Midwife Student	0.6%	0.4%	0.5%	0.7%	0.5%	0.4%	0.4%
Nursing/ Midwifery awaiting registration	0.0%	1.8%	0.9%	0.2%	0.4%	0.6%	0.1%
Nursing/ Midwifery Student	1.5%	2.7%	1.7%	1.6%	1.4%	2.7%	2.7%
Nursing Education/Clinical	0.4%	0.3%	0.3%	0.3%	0.3%	0.3%	0.3%
Other Nursing/ Midwifery				0.0%	0.0%	0.0%	0.0%
Nursing/ Midwifery other	0.4%	0.3%	0.3%	0.3%	0.3%	0.3%	0.3%
Public Health Nurse					0.0%	0.0%	0.0%
Public Health Nurse					0.0%	0.0%	0.0%
Nursing & Midwifery	40.3%	40.6%	40.9%	40.1%	39.5%	39.5%	39.5%
Dietitians	4.5%	4.8%	4.9%	4.8%	4.8%	4.8%	5.0%
Occupational Therapists	3.4%	3.2%	3.5%	3.5%	3.9%	4.4%	4.2%
Orthoptists	0.3%	0.3%	0.3%	0.3%	0.2%	0.2%	0.2%
Physiotherapists	12.2%	12.8%	12.6%	12.6%	12.9%	12.7%	12.6%
Podiatrists & Chiropodists	0.5%	0.4%	0.5%	0.4%	0.4%	0.4%	0.4%
Speech & Language Therapists	2.1%	2.6%	2.6%	2.6%	2.9%	2.9%	3.0%
Therapy Professions	23.1%	24.1%	24.5%	24.2%	25.1%	25.4%	25.4%
Audiology	0.6%	0.5%	0.4%	0.5%	0.4%	0.4%	0.4%
Biochemists	0.5%	0.3%	0.4%	0.4%	0.5%	0.5%	0.5%

Jul 2021 (Dec 2019 figure: 10,527)	WTE Dec 2016	WTE Dec 2017	WTE Dec 2018	WTE Dec 2019	WTE Dec 2020	WTE Jun 2021	WTE Jul 2021
Overall	9,585	9,979	10,386	10,527	11,288	11,778	11,897
Clinical Engineering	2.0%	2.0%	2.1%	1.9%	2.0%	1.7%	1.7%
Clinical Measurement	4.7%	4.9%	4.6%	4.3%	4.4%	4.4%	4.3%
Dosimetrists	0.4%	0.4%	0.5%	0.6%	0.6%	0.7%	0.7%
Perfusionists	0.4%	0.4%	0.4%	0.3%	0.3%	0.3%	0.2%
Phlebotomists	3.1%	2.9%	2.9%	3.2%	3.0%	2.9%	2.9%
Physicists	1.7%	1.6%	1.7%	1.8%	1.8%	2.2%	2.1%
Radiation Therapists	2.9%	2.6%	2.7%	3.2%	2.9%	2.7%	2.6%
Radiographers	16.6%	16.5%	16.4%	16.5%	17.1%	17.7%	17.8%
Medical Science	30.5%	30.0%	29.3%	28.5%	27.1%	25.7%	25.5%
Health Science/ Diagnostics	63.5%	62.1%	61.4%	61.2%	60.1%	58.8%	58.8%
Social Workers	2.3%	2.5%	2.6%	2.5%	2.6%	2.6%	2.6%
Psychologists	0.1%	0.1%	0.1%	0.1%	0.1%	0.2%	0.2%
Pharmacy	8.9%	9.0%	9.3%	10.1%	10.6%	11.1%	11.1%
HSCP Trainees/ Students	1.8%	2.0%	2.0%	1.7%	1.3%	0.5%	0.1%
Other Health & Social Care	0.2%	0.1%	0.1%	0.2%	0.2%	0.1%	0.1%
Play Therapists/ Specialists	0.1%	0.1%				0.1%	0.1%
Vaccinators						1.0%	1.6%
H&SC, Other	2.1%	2.2%	2.1%	1.9%	1.5%	2.0%	2.0%
Health & Social Care Professionals	12.0%	12.1%	12.1%	12.2%	12.6%	12.7%	12.7%
Executive Management	0.5%	0.5%	0.4%	0.6%	0.5%	0.6%	0.6%
Senior Management (VIII & GM)	2.1%	2.7%	2.8%	2.6%	2.9%	3.0%	3.0%
Management (VIII & above)	2.6%	3.1%	3.2%	3.2%	3.4%	3.5%	3.5%
Administrative/ Supervisory (V to VII)	13.7%	14.7%	14.4%	16.7%	19.6%	19.8%	19.8%
General Administrative (III & IV)	83.7%	82.2%	82.4%	80.1%	77.1%	76.5%	76.6%
Clerical (III & IV)	83.7%	82.2%	82.4%	80.1%	77.1%	76.6%	76.6%
Management & Administrative	14.8%	15.0%	14.9%	15.0%	14.6%	14.7%	14.7%
Catering	5.5%	5.9%	5.6%	6.2%	6.0%	5.6%	5.3%
Household Services	52.8%	54.2%	54.6%	53.3%	51.0%	50.6%	50.8%
Other Labs & Associated	3.5%	3.9%	3.9%	4.4%	5.1%	6.3%	7.2%
Other Support	8.4%	8.4%	9.1%	9.4%	9.3%	8.2%	7.9%
Portering	26.4%	24.6%	24.0%	24.1%	25.6%	26.3%	26.0%
Support	96.6%	97.1%	97.2%	97.4%	97.0%	97.2%	97.2%
Maintenance	3.3%	2.8%	2.7%	2.5%	2.8%	2.8%	2.6%
Technical Services	0.2%	0.1%	0.1%	0.1%	0.2%	0.2%	0.2%
Maintenance/ Technical	3.4%	2.9%	2.8%	2.6%	3.0%	2.8%	2.8%
General Support	12.7%	12.0%	11.9%	11.9%	12.1%	12.6%	12.6%
HCA, Nurse's Aide, etc.	95.3%	95.7%	95.4%	95.8%	93.4%	96.8%	96.4%
Health & Social Care Assistants	1.1%	1.0%	1.8%	1.8%	1.1%	1.2%	1.1%
HCA (Student Nurse/Midwife COVID-19)					3.5%		0.5%
Health Care Assistants	96.4%	96.7%	97.2%	97.6%	97.9%	98.0%	98.0%
Other Care Grades	3.6%	3.3%	2.8%	2.4%	2.1%	2.0%	2.0%
Care, other	3.6%	3.3%	2.8%	2.4%	2.1%	2.0%	2.0%
Patient & Client Care	5.8%	5.8%	6.0%	6.2%	6.5%	6.4%	6.4%
Total	100%	100%	100%	100%	100%	100%	100%

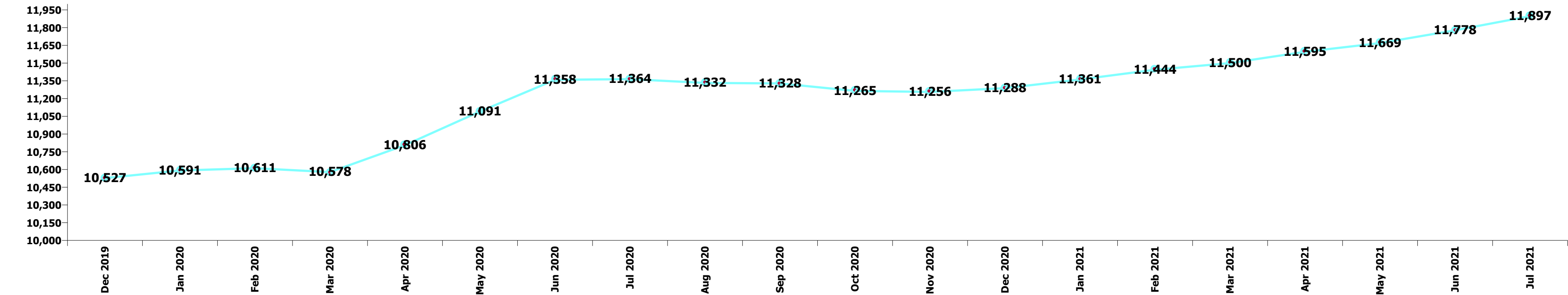
Summary Staff Movement: July 2021

Month-on-month Summary

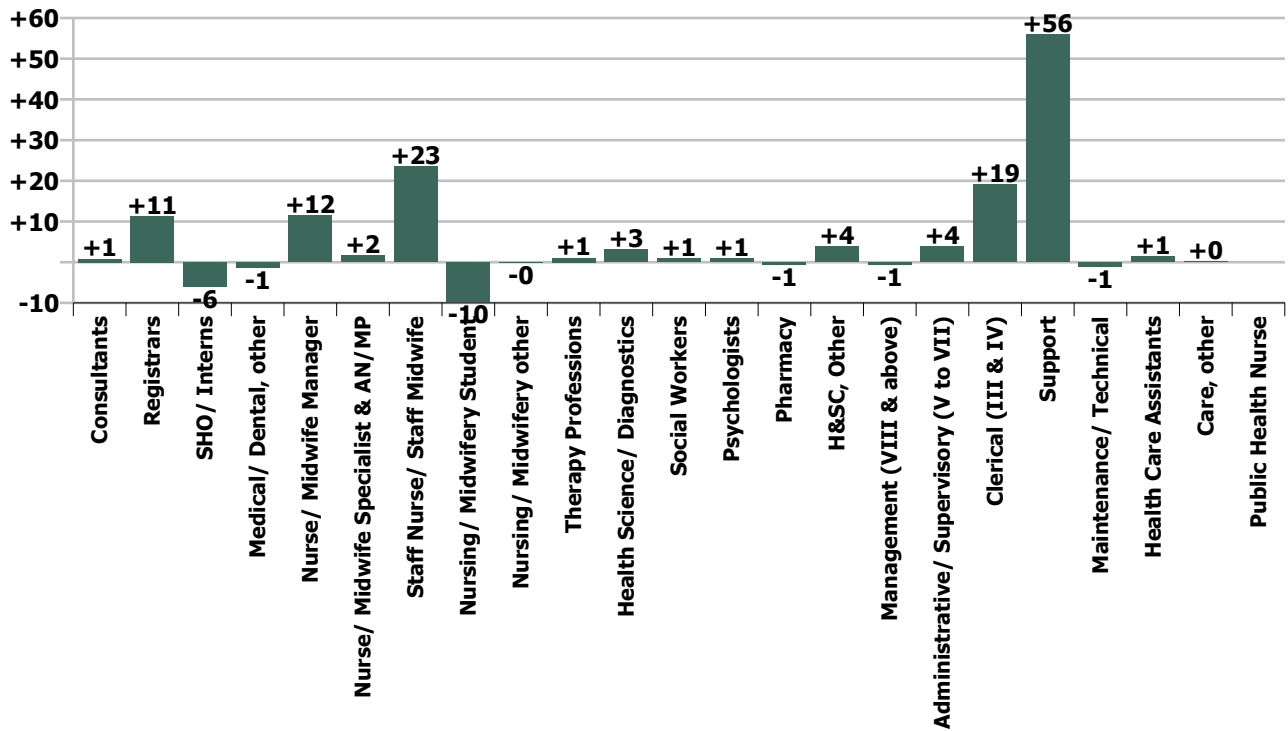
WTE change since Jun 21	% change since Jun 21	overall	Consultants	Registrars	SHO/ Interns	Medical/ Dental, other	Medical & Dental	Nurse/ Midwife Manager	Nurse/ Midwife Specialist & AN/MP	Staff Nurse/ Staff Midwife	Nursing/ Midwifery Student	Nursing/ Midwifery other	Public Health Nurse	Nursing & Midwifery	Therapy Professions	Health Science/ Diagnostics	Social Workers	Psychologists	Pharmacy	H&SC, Other	Health & Social Care Professionals	Management (VIII & above)	Administrativ e/ Supervisory (V to VII)	Clerical (III & IV)	Management & Administrative	General Support	Health Care Assistants	Care, other	Patient & Client Care
Overall	+1.0%	+120	+1	+11	-6	-1	+5	+12	+2	+23	-10	-0		+27	+1	+3	+1	+1	-1	+4	+9	-1	+4	+19	+23	+55	+1	+0	+2
Bantry General	+1.5%	+4		-0	-0		-0	+0	+0	+1				+1	-0	-1			+0		-1		+0	+0	+0		+4		+4
Mallow General	-0.1%	-0	+0	-1	+0		-0	-1		+1				+0	-0	+1			+1		+1		+0	-0	-0	-0	+0		+0
Cork University	+1.2%	+53	-1	+6	-8	+1	-2	+8	+1	-4	+11	-0		+16	-1	-4	+1	+1	+3	-2	-2	-1	+2	+3	+4	+40	-3	-0	-4
Mercy University	-0.1%	-2	+0	+3	-2		+2	+0	-1	-3	-0			-4	+1	-0	-0		-1		-1		+0	+0	+0	-2	+2		+2
Hospital Group HQ	+22.1%	+19				-2	-2	+4		-0				+3					+1	+9	+10	+1	+1	+7	+9		-1		-1
South Infirmary Victoria University	+0.8%	+7	-0	-3			-3	-1		-0				-1	+0	+0			-1		-0		+0	+8	+8	+4			
UH Kerry	-0.1%	-1	+0	+0	-2		-2	-0	-0	-3	+0			-3	-2	+2			-1	-1	-1		-1	+3	+3	+1	+0	+1	+1
UH Waterford	+1.2%	+25	+2	+4	+5	+0	+11	+2	+1	+9	-0			+11	+2	+4			-2	-3	+1	-0	+2	-3	-2	+5	-3		-3
South Tipperary General	+1.4%	+15	+1	+1	+1		+2	-0	+0	+24	-21			+3	+1	-0			-0	+1	+1		-1	+1	+1	+7	+2	-1	+2
Lourdes Orthopaedic Kilcreene	-1.3%	-1	-1	+1				-0		-0				-0											-0				
			+0.2%	+2.1%	-1.0%	-12.2%	+0.3%	+1.3%	+0.8%	+0.7%	-7.1%	-0.3%		+0.6%	+0.3%	+0.4%	+2.2%	+58.7%	-0.4%	+15.2%	+0.6%	-0.8%	+1.1%	+1.4%	+1.3%	+3.8%	+0.2%	+0.8%	+0.2%

Year-on-year Summary

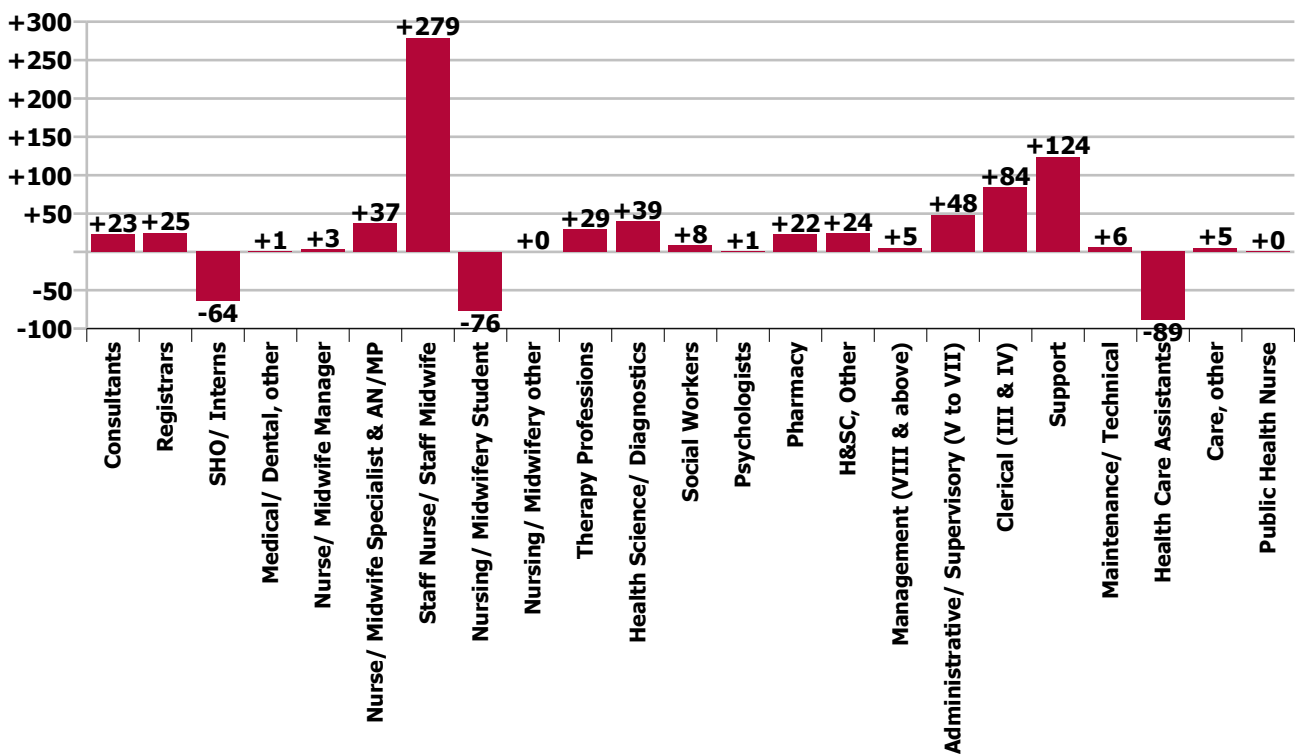
WTE change since Jul 20	% change since Jul 20	overall	Consultants	Registrars	SHO/ Interns	Medical/ Dental, other	Medical & Dental	Nurse/ Midwife Manager	Nurse/ Midwife Specialist & AN/MP	Staff Nurse/ Staff Midwife	Nursing/ Midwifery Student	Nursing/ Midwifery other	Public Health Nurse	Nursing & Midwifery	Therapy Professions	Health Science/ Diagnostics	Social Workers	Psychologists	Pharmacy	H&SC, Other	Health & Social Care Professionals	Management (VIII & above)	Administrativ e/ Supervisory (V to VII)	Clerical (III & IV)	Management & Administrative	General Support	Health Care Assistants	Care, other	Patient & Client Care
Overall	+4.7%	+533	+23	+25	-64	+1	-16	+3	+37	+279	-76	+0	+0	+243	+29	+39	+8	+1	+22	+24	+124	+5	+48	+84	+137	+129	-89	+5	-84
Bantry General	+2.5%	+7	-0	-1	-3	+0	-4	+3	+3	+1				+7	+1	+2			+1		+3	+1	+2	-4	-1	-2	+3	+1	+4
Mallow General	-3.1%	-8	-1	-3	-3		-7	-1	+2	+2				+2	+1	+1			+0		+2	+1	+1	-1	+1	-1	-5	+0	-5
Cork University	+3.9%	+170	+11	+19	-45	+1	-13	-4	+9	+115	-26	+1		+95	+22	+7	+3	+1	+14	-2	+46	+1	+23	+5	+29	+70	-60	+3	-57
Mercy University	+5.4%	+67	+1	+2	-8		-5	-5	+7	+30	-10			+23	-1	+8	+2		-3		+6	+2	+3	+26	+30	+12	+1	+1	+2
Hospital Group HQ	+135.5%	+60	+0				+0	+9		+1			+0	+10					+1	+24	+25	+0	+2	+17	+19		+5		+5
South Infirmary Victoria University	+3.2%	+27	-1	-2	-16		-19	+7	+1	+11	-12	-1		+7	+3	+1			+2		+6		-1	+24	+23	+16	-6		-6
UH Kerry	+1.3%	+16	+3	-1	-6		-4	-3	+7	+4	-20			-12	-3	+12	+1		+1	+1	+11		+7	+7	+14	+6	-0	+1	+1
UH Waterford	+3.9%	+80	+11	+14	+9	-0	+33	+0	+6	+42	-10	-0		+38	+2	+3			+4		+9	-0	+8	+6	+14	+16	-29		-29
South Tipperary General	+11.9%	+114	+0	-2	+3		+1	-2	+3	+70	+1			+72	+4	+7	+2		+2	+1	+15		+4	+5	+9	+15	+3	-1	+2
Lourdes Orthopaedic Kilcreene	-0.8%	-1	-1	-1	+3		+1	-0		+1				+1									+0	+0	-2				
			+4.6%	+4.7%	-9.6%	+9.0%	-0.9%	+0.3%	+21.4%	+8.7%	-37.3%	+0.2%	-100.0%	+5.4%	+8.1%	+4.6%	+26.5%	+58.7%	+15.3%	+489.4%	+9.0%	+8.8%	+16.1%	+6.7%	+8.5%	+9.4%	-10.6%	+50.3%	-9.9%



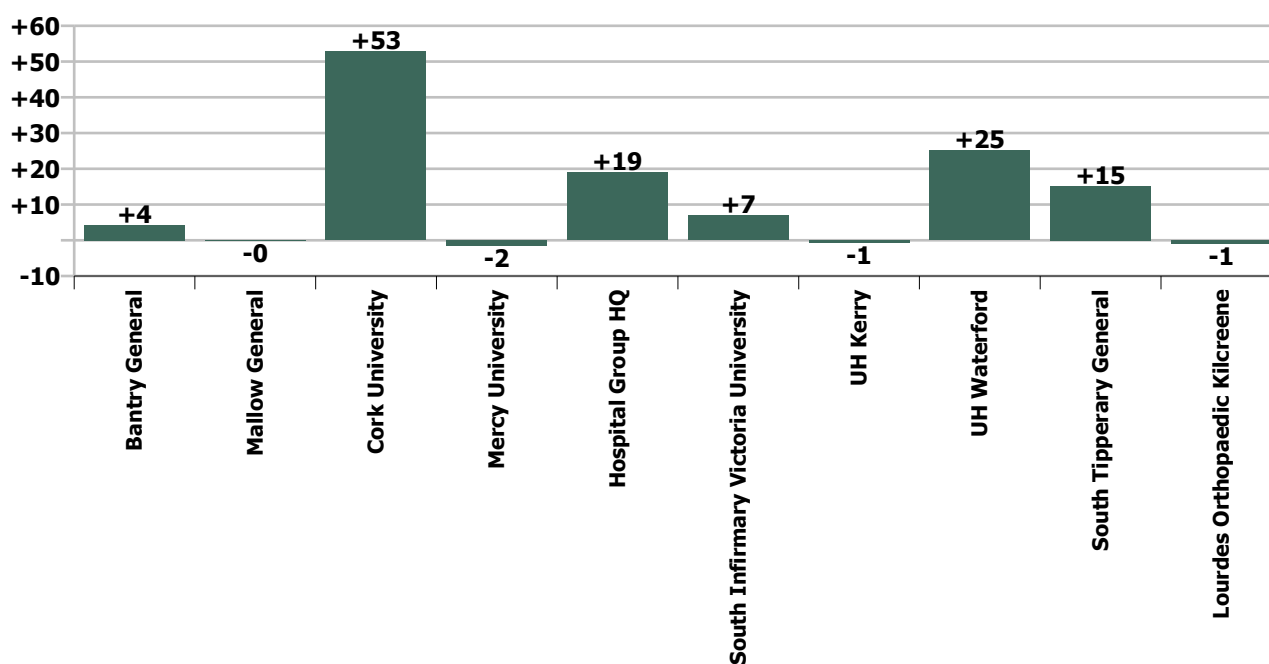
Staff Group change since: Jun 2021



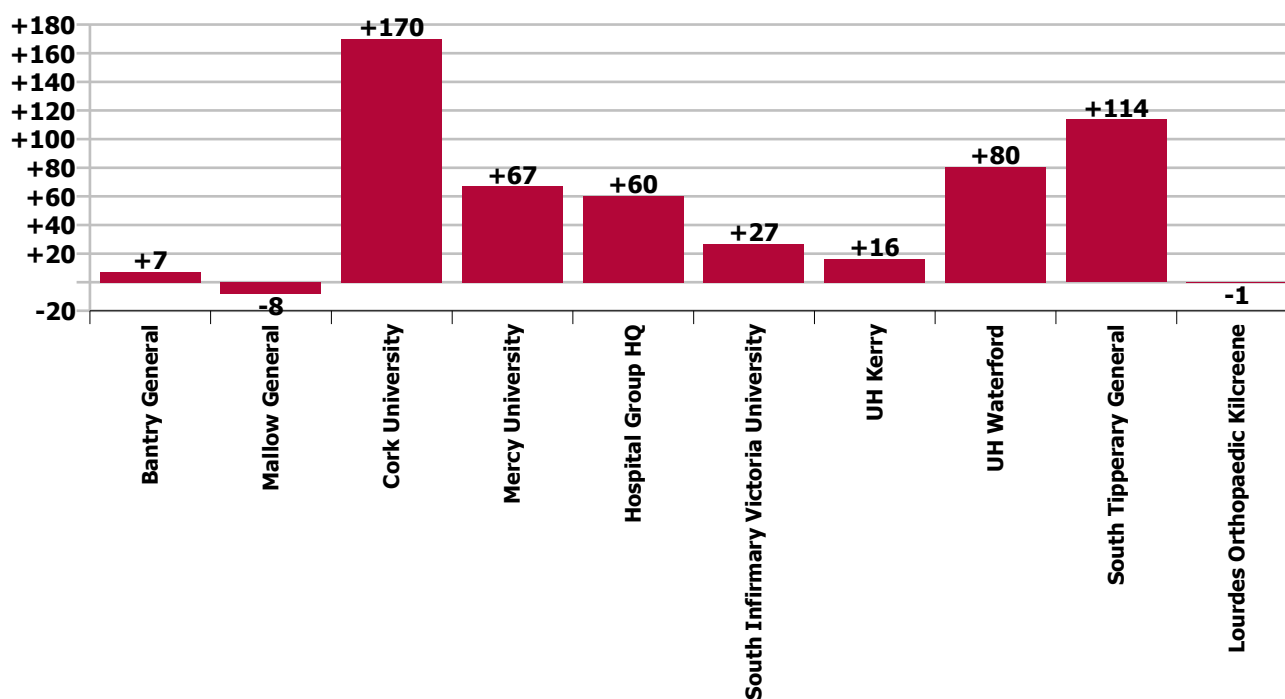
Staff Group change since: Jul 2020



Hospital change since: Jun 2021



Hospital change since: Jul 2020



Longitudinal Employment Levels by Grade Group - Oct 2013 to Jul 2021

Jul 2021 (Dec 2016 figure: 9,585)	WTE Jul 2021	WTE change since Dec 16	WTE change since Dec 18	WTE change since Dec 19	WTE change since Jun 21	% change since Dec 16	% change since Dec 18	% change since Dec 19	% change since Jun 21
Overall	11,897	+2,313	+1,511	+1,370	+120	+24.1%	+14.6%	+13.0%	+1.0%
Consultant Anaesthesia	76	+8	+6	+2	+1	+11.2%	+9.2%	+2.8%	+0.7%
Consultant in Emergency Medicine	16	+0	+1	+1	-1	+3.0%	+10.0%	+8.6%	-5.7%
Consultant Emergency Medicine	16	+0	+1	+1	-1	+3.0%	+10.0%	+8.6%	-5.7%
Consultant Cardiologist	10	-1	+3	+2	+0	-6.3%	+47.3%	+28.9%	+0.6%
Consultant Cardiologist & General Physician			-4	-4		-100.0%	-100.0%	-100.0%	-100.0%
Consultant Clinical Neurophysiologist	3	+2	+1	-0		+142.9%	+41.7%	-0.0%	
Consultant Dermatologist	7	-1	-1	-0	+0	-8.3%	-8.3%	-4.1%	+1.9%
Consultant Gastroenterologist & General Physician	8	+2	-1	-1		+36.4%	-6.3%	-6.3%	
Consultant General Physician	42	+9	+11	+10	-0	+29.2%	+34.3%	+33.0%	-0.4%
Consultant in Palliative Medicine	9	+4	+3	+1	-0	+72.4%	+54.0%	+11.1%	-0.6%
Consultant in Rehabilitation Medicine	1								
Consultant Medical Oncologist	16	+5	+2	+2	+1	+38.9%	+11.0%	+11.0%	+5.2%
Consultant Nephrologist & General Physician	8	+2	+1	+1	-0	+29.8%	+11.3%	+11.3%	-5.7%
Consultant Neurologist	8	+1	+0	+0		+20.0%	+2.4%	+2.4%	
Consultant Physician in Clinical Pharmacology & Therapeutics		-1				-100.0%	-100.0%	-100.0%	-100.0%
Consultant Physician in Endocrinology	5								
Consultant Physician in Geriatric Medicine	23	+11	+6	+5	-0	+88.4%	+35.0%	+27.6%	-0.0%
Consultant Physician in Infectious Diseases	2		-1	-1			-40.0%	-25.0%	
Consultant Respiratory & General Physician	7	+1	-1	-1		+16.7%	-12.5%	-12.5%	
Consultant Rheumatologist			-3	-3		-100.0%	-100.0%	-100.0%	-100.0%
Consultant Rheumatologist & General Physician	9	+1	+5	+5		+12.0%	+93.7%	+93.7%	
Consultant Medicine	159	+36	+22	+17	+0	+29.4%	+15.8%	+12.2%	+0.2%
Consultant Obstetrician & Gynaecologist	30	+6	+4	+3	-1	+26.5%	+14.9%	+10.4%	-2.7%
Consultant Obstetrics & Gynaecology	30	+6	+4	+3	-1	+26.5%	+14.9%	+10.4%	-2.7%
Consultant Unclassified				-1		-100.0%	-100.0%	-100.0%	-100.0%
Consultant, Other				-1		-100.0%	-100.0%	-100.0%	-100.0%
Consultant Neonatologist	7	+2	+2	+2	+0	+37.4%	+30.0%	+30.0%	+1.2%
Consultant Paediatrician	32	+10	+9	+9	+1	+45.8%	+40.0%	+36.7%	+4.3%
Consultant Paediatrics	39	+12	+11	+10	+1	+44.3%	+38.2%	+35.5%	+3.8%
Consultant Clinical Biochemist	1	+1				+233.3%			
Consultant Haematologist (Clinical & Laboratory)	14	+5	+3	+2	+1	+51.4%	+23.2%	+14.7%	+3.7%
Consultant Histopathologist	22	+2	+1	+2	+0	+10.3%	+4.8%	+7.4%	+0.1%
Consultant Microbiologist	9	+1	+2	+2	-0	+12.6%	+29.8%	+29.8%	-0.6%

Jul 2021 (Dec 2016 figure: 9,585)	WTE Jul 2021	WTE change since Dec 16	WTE change since Dec 18	WTE change since Dec 19	WTE change since Jun 21	% change since Dec 16	% change since Dec 18	% change since Dec 19	% change since Jun 21
Overall	11,897	+2,313	+1,511	+1,370	+120	+24.1%	+14.6%	+13.0%	+1.0%
Consultant Pathology	45	+8	+6	+5	+0	+22.9%	+14.1%	+13.1%	+1.1%
Consultant Radiation Oncologist	1	-1				-50.0%			
Consultant Radiologist	44	+2	+1	-1	-0	+5.9%	+2.5%	-2.0%	-0.7%
Consultant Radiology	45	+1	+1	-1	-0	+3.4%	+2.4%	-2.0%	-0.7%
Consultant Cardio-thoracic Surgeon	3			-1	+0			-25.0%	+2.7%
Consultant General Surgeon	25	-8	+3	+3	-0	-24.0%	+13.5%	+11.3%	-1.8%
Consultant General Surgeon Breast	3	+3				-100.0%			
Consultant General Surgeon Colo-rectal	1	+1	-1	-2		-100.0%	-50.0%	-66.7%	
Consultant General Surgeon Gastro-intestinal	3	+3				-100.0%			
Consultant General Surgeon s.i. vascular surgery	8	+5	+1	+1		+166.7%	+6.7%	+6.7%	
Consultant Neurosurgeon	4	+1				+33.3%			
Consultant Ophthalmic Surgeon	12	+1	+1	-0	-0	+10.0%	+10.2%	-2.7%	-0.4%
Consultant Oral Surgeon	2	+1	+0	+0		+67.0%	+28.5%	+28.5%	
Consultant Orthopaedic Surgeon	22	+2	+1	+1	-0	+10.8%	+7.2%	+7.2%	-0.2%
Consultant Otolaryngologist	11	+1	-1	+0	-0	+8.6%	-7.9%	+3.6%	-2.6%
Consultant Plastic Surgeon	7	+2	+2	+2	+1	+40.0%	+40.0%	+40.0%	+16.7%
Consultant Urologist	8	+5		-1		+128.6%		-11.1%	
Consultant Surgery	108	+16	+6	+3	+0	+18.0%	+6.3%	+2.7%	+0.2%
Consultants	518	+89	+57	+40	+1	+20.7%	+12.4%	+8.4%	+0.2%
Registrar	176	-63	+11	+9	-0	-26.4%	+6.9%	+5.5%	-0.2%
Registrar, Anaesthesia	21	+17	+3	-1	-1	+435.8%	+19.1%	-2.6%	-3.3%
Registrar, Emergency Medicine	19	+19	+2	-1	+1	-100.0%	+11.9%	-6.0%	+4.4%
Registrar, Medicine	51	+50	+4	+4	+3	+3308.7%	+9.6%	+7.7%	+6.3%
Registrar, Obstetrics & Gynaecology	8	+8	+2	+1	+0	-100.0%	+36.3%	+16.9%	+2.2%
Registrar, Ophthalmology	1	+1				-100.0%			
Registrar, Paediatrics	10	+10	-1	-0	+0	-100.0%	-11.9%	-3.1%	+0.1%
Registrar, Radiology	1	+1				-100.0%			
Registrar, Surgery	37	+32	+8	+5	+7	+638.4%	+27.3%	+15.4%	+23.2%
Registrar	324	+75	+30	+17	+10	+29.9%	+10.2%	+5.5%	+3.2%
Registrar, Senior	28	-5	-6	-2	-1	-16.1%	-17.9%	-6.8%	-3.1%
Senior Registrar	28	-5	-6	-2	-1	-16.1%	-17.9%	-6.8%	-3.1%
Registrar, Specialist	125	-34	+21	+14	+2	-21.6%	+20.8%	+12.9%	+1.6%
Specialist Registrar, Anaesthesia	5	+4		-1		+400.0%		-16.7%	
Specialist Registrar, Emergency Medicine	3	+3	+1	+1	-1	-100.0%	+50.0%	+50.0%	-25.0%
Specialist Registrar, Medicine	27	+27	+8	+4	+0	-100.0%	+42.7%	+17.9%	+0.4%
Specialist Registrar, Obstetrics & Gynaecology	2	+2	-1	-1	-1	-100.0%	-25.0%	-25.0%	-25.0%

Jul 2021 (Dec 2016 figure: 9,585)	WTE Jul 2021	WTE change since Dec 16	WTE change since Dec 18	WTE change since Dec 19	WTE change since Jun 21	% change since Dec 16	% change since Dec 18	% change since Dec 19	% change since Jun 21
Overall	11,897	+2,313	+1,511	+1,370	+120	+24.1%	+14.6%	+13.0%	+1.0%
Specialist Registrar, Paediatrics	4	+4		+2	+1	-100.0%		+100.0%	+33.3%
Specialist Registrar, Pathology	4	+4	+3	+3		-100.0%	+300.0%	+300.0%	
Specialist Registrar, Radiology	10	+10	+2	-0	-0	-100.0%	+24.9%	-0.1%	-0.1%
Specialist Registrar, Surgery	18	+18	+12	+4	+1	-100.0%	+199.0%	+28.1%	+5.5%
Specialist Registrar	198	+38	+47	+27	+2	+23.7%	+31.0%	+15.5%	+1.2%
Registrars	550	+107	+71	+41	+11	+24.1%	+14.7%	+8.1%	+2.1%
Intern	195	+53	+49	+51	+9	+37.1%	+33.2%	+35.1%	+4.8%
Interns	195	+53	+49	+51	+9	+37.1%	+33.2%	+35.1%	+4.8%
House Officer, Senior	200	-156	-6	+1	-19	-43.8%	-3.0%	+0.5%	-8.5%
Senior House Officer, Anaesthesia	18	+16	+2	+5	+1	+800.0%	+11.5%	+38.5%	+5.9%
Senior House Officer, Emergency Medicine	19	+19	-0	-8	-4	-100.0%	-1.7%	-29.5%	-17.3%
Senior House Officer, Medicine	82	+82	+17	+17	+7	-100.0%	+26.3%	+25.7%	+8.7%
Senior House Officer, Obstetrics & Gynaecology	16	+16	+4	+3	+2	-100.0%	+31.3%	+21.2%	+12.5%
Senior House Officer, Ophthalmology	4	+4		-1		-100.0%		-20.0%	
Senior House Officer, Paediatrics	17	+17	-2	-3	-2	-100.0%	-8.2%	-12.8%	-10.5%
Senior House Officer, Pathology	2	+2	+2	+2		-100.0%	-100.0%	-100.0%	
Senior House Officer, Surgery	49	+43	+4	-2	+0	+710.5%	+8.1%	-4.6%	+0.6%
Senior House Officer	407	+43	+20	+14	-15	+11.8%	+5.3%	+3.5%	-3.5%
SHO/ Interns	601	+95	+69	+64	-6	+18.9%	+12.9%	+12.0%	-1.0%
Area Medical Officer	2	-0	-0	-0	-0	-9.4%	-4.7%	-4.7%	-4.7%
Area Medical Officer, Senior	1	+1				-100.0%			
Associate Specialist	1	+1	-1	-0	+1	-100.0%	-63.5%	-27.0%	-100.0%
Director of Public Health	1	+1	+1			-100.0%	-100.0%		
Medical Officer	1	+0	-1	-0	-0	+46.3%	-28.7%	-18.2%	-4.1%
Medical Officer, Principal	1	+1	-1			-100.0%	-33.3%		
Medical Officer, Senior	0	+0	+0	+0	-2	-100.0%	-100.0%	-100.0%	-84.6%
Ophthalmic Physician, Community	1	+1	-0			-100.0%	-4.8%		
Other Medical	9	+5	-1	-0	-1	+151.0%	-11.4%	-3.9%	-12.2%
Medical/ Dental, other	9	+5	-1	-0	-1	+151.0%	-11.4%	-3.9%	-12.2%
Medical & Dental	1,679	+297	+196	+145	+5	+21.5%	+13.2%	+9.5%	+0.3%
Clinical Midwife Manager 1	1	+1	-2	-1		-100.0%	-66.7%	-45.7%	
Clinical Midwife Manager 2	33	+25	+15	+8	+3	+305.3%	+84.1%	+30.4%	+10.6%
Clinical Midwife Manager 3	4	+3	+2		-1	+300.0%	+100.0%		-20.0%
Clinical Nurse Manager 1	176	+25	+1	-10	-1	+16.9%	+0.6%	-5.5%	-0.5%
Clinical Nurse Manager 1 (Mental Health)	2	-2	+0	-0	+0	-56.1%	+1.3%	-1.3%	+1.3%

Jul 2021 (Dec 2016 figure: 9,585)	WTE Jul 2021	WTE change since Dec 16	WTE change since Dec 18	WTE change since Dec 19	WTE change since Jun 21	% change since Dec 16	% change since Dec 18	% change since Dec 19	% change since Jun 21
Overall	11,897	+2,313	+1,511	+1,370	+120	+24.1%	+14.6%	+13.0%	+1.0%
Clinical Nurse Manager 1 - Theatre	3	+1	+3	+3		+71.7%	-100.0%	-100.0%	
Clinical Nurse Manager 2	496	+130	+68	+30	+9	+35.4%	+16.0%	+6.5%	+1.9%
Clinical Nurse Manager 2 (Mental Health)	1		+1				-100.0%		
Clinical Nurse Manager 2 - Theatre	11	-5	+1	-2	+1	-30.2%	+6.8%	-16.1%	+11.5%
Clinical Nurse Manager 3	37	+16	-1	-2	-2	+81.3%	-3.0%	-5.8%	-5.0%
Clinical Nurse Manager 3 - Night	17	-5	-6	-18	-0	-21.3%	-25.2%	-51.3%	-1.0%
Clinical Nurse Manager 3 - Theatre	2	-0	-1	-1		-4.4%	-30.7%	-30.7%	
Clinical Nurse/ Midwife Manager	782	+190	+82	+7	+10	+32.1%	+11.7%	+0.9%	+1.3%
Director of Nursing 1, Assistant	60	+18	+9	+4	+1	+43.8%	+17.6%	+7.4%	+1.2%
Director of Nursing 2, Assistant	12	+7	+6	+6	+1	+150.8%	+109.9%	+105.7%	+8.3%
Director of Nursing 3, Assistant	8	-1	-6	-3	+0	-11.1%	-42.9%	-27.3%	+0.3%
Director of Nursing 4, Assistant	2	+2	+2	+2		-100.0%	-100.0%	-100.0%	
Director of Nursing, Deputy		-1	-1	-1		-100.0%	-100.0%	-100.0%	-100.0%
Director Nursing/Midwifery, Assistant	82	+26	+10	+8	+2	+45.3%	+14.5%	+11.5%	+2.1%
Director of Nursing 1	10	+1	+2	+1	+0	+11.1%	+21.7%	+11.1%	+0.3%
Director of Nursing 2	4	+3	+2	+2	+0	+300.0%	+100.0%	+100.0%	+2.6%
Director of Nursing 3	1	-1	-1	-1		-50.0%	-50.0%	-50.0%	
Director of Nursing & Midwifery, Hospital Group	1	+1				-100.0%			
Director of Nursing/Midwifery	16	+4	+3	+2	+0	+33.3%	+21.0%	+14.3%	+0.8%
Nurse/ Midwife Manager	880	+220	+95	+17	+12	+33.2%	+12.1%	+2.0%	+1.3%
Advanced Midwife Practitioner	1								
Advanced Midwife Practitioner, Candidate	1	+1	+1	+1	-0	-100.0%	-100.0%	-100.0%	-5.6%
Advanced Nurse Practitioner, Candidate (General)	13	+13	+13	+13		-100.0%	-100.0%	-100.0%	
Advanced Nurse Practitioner (General)	55	+37	+33	+31	+1	+210.2%	+155.4%	+130.3%	+1.1%
Advanced Nurse/ Midwife Practitioner	69	+51	+47	+45	+1	+273.5%	+210.5%	+181.2%	+0.8%
Clinical Midwife Specialist	16	+9	+2	+1	-0	+119.6%	+18.8%	+7.2%	-2.0%
Clinical Nurse Specialist (Children's)	1	+1	+1	+1	+1	-100.0%	-100.0%	-100.0%	-100.0%
Clinical Nurse Specialist (General)	125	+13	+21	+18	+1	+11.5%	+20.2%	+16.5%	+0.6%
Clinical Nurse/ Midwife Specialist	141	+22	+24	+19	+1	+18.7%	+20.6%	+16.0%	+0.8%
Nurse/ Midwife Specialist & AN/MP	210	+73	+71	+64	+2	+53.1%	+51.1%	+43.8%	+0.8%
Enhanced Midwife	130	+130	+130	+130	+0	-100.0%	-100.0%	-100.0%	+0.0%
Enhanced Midwife, Senior	52	+52	+52	+52	+1	-100.0%	-100.0%	-100.0%	+2.1%
Staff Midwife	108	-173	-151	-128	+1	-61.6%	-58.3%	-54.4%	+0.8%
Staff Midwife, Senior	4	-78	-76	-59	-0	-95.2%	-95.0%	-93.7%	-3.6%
Staff Midwife, Senior (dual qualified)		-1	-1	-1	-1	-100.0%	-100.0%	-100.0%	-100.0%

Jul 2021 (Dec 2016 figure: 9,585)	WTE Jul 2021	WTE change since Dec 16	WTE change since Dec 18	WTE change since Dec 19	WTE change since Jun 21	% change since Dec 16	% change since Dec 18	% change since Dec 19	% change since Jun 21
Overall	11,897	+2,313	+1,511	+1,370	+120	+24.1%	+14.6%	+13.0%	+1.0%
Staff Midwives	294	-69	-45	-6	+1	-19.0%	-13.2%	-1.9%	+0.3%
Enhanced Nurse (Children's)	6	+6	+6	+6	+0	-100.0%	-100.0%	-100.0%	+0.5%
Enhanced Nurse (General)	1,236	+1,236	+1,236	+1,236	+3	-100.0%	-100.0%	-100.0%	+0.2%
Enhanced Nurse, Senior (Children's)	9	+9	+9	+9	-1	-100.0%	-100.0%	-100.0%	-8.0%
Enhanced Nurse, Senior (General)	859	+859	+859	+859	-6	-100.0%	-100.0%	-100.0%	-0.7%
Staff Nurse (Adaptation Placement), General	73	+73	+66	+56	+28	-100.0%	+1038.1%	+328.5%	+62.6%
Staff Nurse (Children's)		-3				-100.0%	-100.0%	-100.0%	-100.0%
Staff Nurse, Dual Qualified (General)	1	-10	-6	-3	-0	-94.2%	-91.3%	-84.3%	-7.8%
Staff Nurse - General	848	-1,176	-1,396	-1,251	+6	-58.1%	-62.2%	-59.6%	+0.7%
Staff Nurse, Senior (Dual Qualified)	20	-72	-67	-55	-3	-78.5%	-77.3%	-73.9%	-12.1%
Staff Nurse, Senior (General)	123	-380	-430	-509	-3	-75.5%	-77.7%	-80.5%	-2.7%
Staff Nurses [General/ Children's]	3,174	+543	+277	+347	+24	+20.6%	+9.6%	+12.3%	+0.7%
Enhanced Nurse (Intellectual Disability)					-1	-100.0%	-100.0%	-100.0%	-100.0%
Staff Nurse [Intellectual Disability]					-1	-100.0%	-100.0%	-100.0%	-100.0%
Staff Nurse/ Staff Midwife	3,469	+474	+232	+341	+23	+15.8%	+7.2%	+10.9%	+0.7%
Student General Nursing Intern (pre-registration)	93	+60	+82	+67	+12	+184.9%	+781.8%	+263.1%	+15.0%
Student Midwifery Intern (pre-registration)	7	+7	+6	+3	+0	-100.0%	+625.0%	+61.1%	+3.6%
Student Psychiatric Nursing Intern (pre-registration)	1	+1	+1	+1		-100.0%	-100.0%	-100.0%	
Pre-registration Nurse/ Midwife Intern	100	+68	+89	+70	+12	+208.7%	+772.5%	+234.5%	+14.0%
Student General Nursing Intern (COVID-19 HCA)	2	+2	+2	+2	-1	-100.0%	-100.0%	-100.0%	-22.7%
Pre-registration Nurse Intern (COVID-19)	2	+2	+2	+2	-1	-100.0%	-100.0%	-100.0%	-22.7%
Student Midwifery (post registration)	19	-5	-4	-10	-1	-19.8%	-16.3%	-33.6%	-3.2%
Post-registration Nurse/ Midwife Student	19	-5	-4	-10	-1	-19.8%	-16.3%	-33.6%	-3.2%
Staff Midwife (awaiting-registration)			-1	-1		-100.0%	-100.0%	-100.0%	-100.0%
Staff Nurse, General (awaiting-registration)	6	+5	-29	-1	-21	+536.0%	-82.2%	-9.1%	-76.5%
Staff Nurse, Psychiatric (awaiting-registration)				-1		-100.0%	-100.0%	-100.0%	-100.0%
Nursing/ Midwifery awaiting registration	6	+5	-30	-3	-21	+536.0%	-82.6%	-29.3%	-76.5%
Nursing/ Midwifery Student	128	+71	+57	+60	-10	+123.1%	+80.3%	+88.7%	-7.1%
Director, Nursing/ Midwifery Education Centre	2	+2	+1	-0	-0	-100.0%	+55.0%	-4.3%	-6.1%
Nurse Tutor	5	+4	+3	+1	+0	+357.0%	+262.7%	+47.4%	+1.3%
Nurse Tutor (Midwifery)	1	-2	-1	-1		-76.7%	-70.1%	-50.0%	
Nursing/ Midwifery Clinical Placement Co-ordinator	7	-3	+1	-0		-30.7%	+10.0%	-5.7%	
Nursing/ Midwifery Practice Development Co-ordinator	1	-1				-47.3%			
Nursing Education/Clinical	14	-0	+3	+1	-0	-1.7%	+30.5%	+3.7%	-0.3%
Director of the Nursing & Midwifery P&D Unit	1	+1	+1			-100.0%	-100.0%		

Jul 2021 (Dec 2016 figure: 9,585)	WTE Jul 2021	WTE change since Dec 16	WTE change since Dec 18	WTE change since Dec 19	WTE change since Jun 21	% change since Dec 16	% change since Dec 18	% change since Dec 19	% change since Jun 21
Overall	11,897	+2,313	+1,511	+1,370	+120	+24.1%	+14.6%	+13.0%	+1.0%
Other Nursing/ Midwifery	1	+1	+1			-100.0%	-100.0%		
Nursing/ Midwifery other	15	+1	+4	+1	-0	+5.3%	+39.7%	+3.4%	-0.3%
Public Health Nurse	0	+0	+0	+0		-100.0%	-100.0%	-100.0%	
Public Health Nurse	0	+0	+0	+0		-100.0%	-100.0%	-100.0%	
Public Health Nurse	0	+0	+0	+0		-100.0%	-100.0%	-100.0%	
Nursing & Midwifery	4,703	+838	+460	+484	+27	+21.7%	+10.8%	+11.5%	+0.6%
Dietitian	19	+1	-2	+4	+1	+6.7%	-10.9%	+29.4%	+2.9%
Dietitian, Clinical Specialist	2	-0	-0	-0	+0	-6.0%	-6.0%	-11.3%	+9.3%
Dietitian Manager	6	+1	+1	-0	-0	+22.2%	+24.9%	-1.8%	-1.1%
Dietitian Manager-in-charge III	2	+2	+2	+2		-100.0%	-100.0%	-100.0%	
Dietitian, Senior	46	+19	+13	+8	+2	+72.4%	+39.6%	+19.9%	+4.5%
Dietitians	75	+23	+14	+14	+3	+45.1%	+22.1%	+22.1%	+3.7%
Occupational Therapist	26	+9	+8	+11	+0	+57.9%	+42.6%	+72.2%	+1.6%
Occupational Therapist, Clinical Specialist	1	+0	+0	+0		+19.0%	+9.9%	+9.9%	
Occupational Therapist-in-charge III	1	+1	+0	+1	+1	-100.0%	+22.0%	-100.0%	-100.0%
Occupational Therapist Manager	4	-1	+0	-1	-1	-13.6%	+7.5%	-18.4%	-20.6%
Occupational Therapist, Senior	31	+13	+11	+7	-3	+74.0%	+50.8%	+26.2%	-7.7%
Occupational Therapists	63	+23	+19	+18	-2	+58.9%	+42.6%	+38.5%	-3.4%
Orthoptist, Senior	4		-1				-12.5%		
Orthoptists	4		-1				-12.5%		
Physiotherapist	70	+11	-4	+9	+1	+17.9%	-5.8%	+14.4%	+1.1%
Physiotherapist, Clinical Specialist	22	+11	+8	+6	+1	+95.2%	+58.2%	+36.6%	+6.0%
Physiotherapist-in-charge (Grade III)	4	+2	+2	+1	-1	+90.5%	+90.5%	+37.1%	-20.8%
Physiotherapist Manager	5	-2	+0	-0	+1	-28.6%	+0.6%	-1.6%	+23.0%
Physiotherapist, Senior	90	+28	+27	+13	-1	+45.9%	+42.4%	+16.5%	-1.6%
Physiotherapists	190	+49	+32	+28	+0	+35.0%	+20.5%	+17.5%	+0.3%
Chiropodist, Clinical Specialist	1	+1	+1	+0	-0	+227.0%	+188.1%	+21.0%	-19.3%
Chiropodist/ Podiatrist	1		+1	+0	-0		-100.0%	+25.0%	-27.0%
Chiropodist/ Podiatrist, Senior	3	-1	-3	-1	+0	-26.2%	-44.5%	-14.0%	+0.0%
Podiatrists & Chiropodists	5	-0	-1	-0	-1	-4.8%	-11.9%	-1.8%	-11.0%
Speech & Language Therapist	16	+9	+5	+8	+1	+139.2%	+43.5%	+113.8%	+3.6%
Speech & Language Therapist, Clinical Specialist	3	+1	+2	+2	+1	+40.0%	+152.0%	+152.0%	+45.7%
Speech & Language Therapist Manager	3	+1	+1	-0	-0	+45.6%	+45.6%	-3.0%	-1.5%
Speech & Language Therapist Manager-in-charge III	1	+1				-100.0%			

Jul 2021 (Dec 2016 figure: 9,585)	WTE Jul 2021	WTE change since Dec 16	WTE change since Dec 18	WTE change since Dec 19	WTE change since Jun 21	% change since Dec 16	% change since Dec 18	% change since Dec 19	% change since Jun 21
Overall	11,897	+2,313	+1,511	+1,370	+120	+24.1%	+14.6%	+13.0%	+1.0%
Speech & Language Therapist, Senior	23	+9	+5	+2	-0	+61.2%	+30.8%	+11.0%	-2.0%
Speech & Language Therapists	45	+20	+12	+12	+1	+83.2%	+38.7%	+36.5%	+1.9%
Therapy Professions	382	+116	+76	+71	+1	+43.7%	+24.9%	+23.0%	+0.3%
Audiologist	3	-1		-1		-19.1%		-25.0%	
Audiologist, Chief	1	-1		+0		-39.8%		+25.0%	
Audiologist, Senior	2	+0	+1	+1		+11.1%	+100.0%	+100.0%	
Audiology	6	-1	+1	+0		-16.3%	+20.0%	+3.4%	
Biochemist		-1				-100.0%	-100.0%	-100.0%	-100.0%
Biochemist, Principal	3	+1	+1	+1		+50.0%	+50.0%	+50.0%	
Biochemist, Senior	5	+2	+2	+2		+67.9%	+67.9%	+73.4%	
Biochemists	8	+2	+3	+3		+32.8%	+60.4%	+63.5%	
Clinical Engineering Technician	5	-0	-2	-1	-1	-7.9%	-30.1%	-8.6%	-8.6%
Clinical Engineering Technician, Chief	3	+1	+1	+1	+0	+50.0%	+50.0%	+50.0%	+0.7%
Clinical Engineering Technician, Principal	3		-1	-1			-25.0%	-25.0%	
Clinical Engineering Technician, Senior	14	+1	+2	+2	+1	+10.4%	+12.9%	+14.2%	+4.0%
Clinical Engineering	26	+2	-1	+1	+0	+8.0%	-2.6%	+5.2%	+0.2%
Cardiac Physiologist	15	-9	-1	+0	+0	-37.7%	-8.3%	+2.4%	+2.2%
Cardiac Physiologist, Chief I	8	+5	+4	+4	-0	+161.2%	+109.9%	+93.4%	-5.9%
Cardiac Physiologist, Chief II	2	-1	-1	+0	+0	-18.7%	-18.7%	+22.0%	+25.1%
Cardiac Physiologist, Senior	19	+8	+4	+3	-1	+78.4%	+26.7%	+22.1%	-3.0%
E.C.G. Technician	2	-3				-60.0%			
Neuro-Physiologist	7	+4	+1	+1	+0	+104.1%	+20.5%	+25.0%	+0.1%
Neuro-Physiologist, Chief I	1	+1				-100.0%			
Neuro-Physiologist, Chief II	2	+1		+1		+100.0%		+100.0%	
Neuro-Physiologist, Senior	2	+1	-1	-1		+37.3%	-31.2%	-18.5%	
Respiratory Physiologist	2	+1	+1	+1		+100.0%	+100.0%	+100.0%	
Respiratory Physiologist, Chief I	1								
Respiratory Physiologist, Senior	5	+3	+1	-1	+0	+150.0%	+25.0%	-16.7%	+4.8%
Clinical Measurement	65	+11	+8	+10	-0	+19.5%	+14.4%	+17.5%	-0.0%
Dosimetrist, Basic	6	+3	+1	-0	+0	+87.7%	+28.9%	-2.3%	+1.6%
Dosimetrist, Senior	4	+3	+2	+2		+270.0%	+100.0%	+117.6%	
Dosimetrists	10	+6	+3	+2	+0	+129.8%	+48.5%	+22.8%	+1.0%
Perfusionist	4	-1	-1	-1	-0	-20.0%	-19.6%	-17.4%	-2.4%
Perfusionists	4	-1	-1	-1	-0	-20.0%	-19.6%	-17.4%	-2.4%
Phlebotomist	40	+9	+7	+3	-1	+29.3%	+19.2%	+7.8%	-1.2%

Jul 2021 (Dec 2016 figure: 9,585)	WTE Jul 2021	WTE change since Dec 16	WTE change since Dec 18	WTE change since Dec 19	WTE change since Jun 21	% change since Dec 16	% change since Dec 18	% change since Dec 19	% change since Jun 21
Overall	11,897	+2,313	+1,511	+1,370	+120	+24.1%	+14.6%	+13.0%	+1.0%
Phlebotomist, Senior	4	-1	+1	-0	+1	-23.1%	+26.7%	-6.6%	+36.4%
Phlebotomists	44	+8	+7	+3	+0	+22.6%	+19.8%	+6.4%	+1.0%
Physicist	10	+3	+3	+5	-0	+40.7%	+39.7%	+84.2%	-0.5%
Physicist, Chief	2	+1	+1	+1		+50.0%	+50.0%	+50.0%	
Physicist, Principal	6	+2	+1	+0		+50.0%	+20.0%	+4.9%	
Physicist, Senior	11	+5	+4	+1		+86.9%	+61.2%	+11.5%	
Physics Technician	3	+2	+2	+3	+0	+200.0%	+200.0%	-100.0%	+1.0%
Physicists	32	+13	+11	+10	-0	+65.5%	+50.0%	+43.2%	-0.1%
Radiation Therapist	31	+7	+7	+4	+1	+27.8%	+28.6%	+13.4%	+2.4%
Radiation Therapist, Clinical Specialist	9	-0	-1	-4	-1	-4.9%	-13.3%	-34.4%	-10.0%
Radiation Therapists	40	+6	+6	-1	-0	+19.0%	+16.6%	-1.9%	-0.5%
Radiographer	126	+27	+35	+36	-4	+27.6%	+38.2%	+39.4%	-2.8%
Radiographer, Clinical Specialist	56	+17	+5	+5	+0	+44.7%	+10.5%	+10.8%	+0.2%
Radiographer, Senior	71	+27	+20	+15	+7	+60.3%	+38.5%	+27.2%	+10.3%
Radiography Service Manager, I	9	+3	+2	-0	-0	+38.6%	+26.5%	-3.3%	-0.6%
Radiography Service Manager, II	5	+2	+1	+0	+0	+66.7%	+25.0%	+4.2%	+3.1%
Radiographers	268	+76	+63	+56	+3	+39.6%	+30.7%	+26.6%	+1.2%
Laboratory Manager	3	+2	+0	+1		+196.0%	+2.1%	+55.8%	
Medical Scientist	237	-16	-10	+2	-2	-6.2%	-4.0%	+0.8%	-0.7%
Medical Scientist, Chief	31	+8	+3	+2	-0	+34.5%	+11.8%	+5.8%	-0.5%
Medical Scientist, Senior	93	+24	+16	+8	+1	+34.0%	+20.3%	+9.8%	+0.7%
Medical Scientist, Specialist	19	+15	+8	+6	+1	+304.2%	+77.0%	+43.2%	+3.8%
Medical Science	384	+32	+18	+19	-0	+9.2%	+4.8%	+5.2%	-0.1%
Health Science/ Diagnostics	886	+154	+118	+102	+3	+21.0%	+15.4%	+13.0%	+0.4%
Social Worker	22	+8	+2	+2	+1	+57.5%	+11.4%	+8.2%	+4.0%
Social Worker, Medical	3	-2	+2	+2		-40.7%	+219.8%	+219.8%	
Social Worker, Principal	3	+0	-1	+1		+3.1%	-23.3%	+57.1%	
Social Worker, Senior Medical	7	+4	+2	+2		+145.4%	+49.7%	+49.7%	
Social Worker, Team Leader	4	+2	+0	-0	+0	+85.7%	+11.2%	-9.6%	+0.2%
Social Workers	39	+12	+6	+7	+1	+45.2%	+18.3%	+20.3%	+2.2%
Social Workers	39	+12	+6	+7	+1	+45.2%	+18.3%	+20.3%	+2.2%
Psychologist, Counselling	1								
Psychologist, Principal Clinical	1	+1				-100.0%			
Psychologist, Senior Clinical	1	-0	+1	+1	+1	-12.0%	-100.0%	-100.0%	-100.0%
Psychologists	2	+1	+1	+1	+1	+58.7%	+58.7%	+58.7%	+58.7%

Jul 2021 (Dec 2016 figure: 9,585)	WTE Jul 2021	WTE change since Dec 16	WTE change since Dec 18	WTE change since Dec 19	WTE change since Jun 21	% change since Dec 16	% change since Dec 18	% change since Dec 19	% change since Jun 21
Overall	11,897	+2,313	+1,511	+1,370	+120	+24.1%	+14.6%	+13.0%	+1.0%
Psychologists	2	+1	+1	+1	+1	+58.7%	+58.7%	+58.7%	+58.7%
Pharmaceutical Technician	39	+8	+6	+4	-1	+26.1%	+17.2%	+11.2%	-1.9%
Pharmaceutical Technician, Senior	35	+16	+12	+6	+1	+80.1%	+53.7%	+21.8%	+2.4%
Pharmacist	24	+7	+8	+10	+0	+44.1%	+49.4%	+77.0%	+0.5%
Pharmacist, Chief I	3								
Pharmacist, Chief II	11	+6	+3	+4	-0	+116.6%	+40.4%	+64.1%	-0.8%
Pharmacist, Senior	56	+28	+22	+14	-1	+103.3%	+63.7%	+32.5%	-1.4%
Pharmacy	168	+65	+51	+39	-1	+63.5%	+43.4%	+29.9%	-0.4%
Pharmacy	168	+65	+51	+39	-1	+63.5%	+43.4%	+29.9%	-0.4%
E.E.G./ E.C.G. Technician, Student	1	+1	+1	+1	+1	-100.0%	-100.0%	-100.0%	-100.0%
Medical Scientist, Student	1	-19	-23	-21	-7	-95.0%	-95.8%	-95.5%	-86.7%
Pharmacist, Student		-1	-1			-100.0%	-100.0%	-100.0%	-100.0%
HSCP Trainees/ Students	2	-19	-23	-20	-6	-90.5%	-92.0%	-90.9%	-73.3%
Child Care Manager	1		+1				#DIV/0		
Clinical Photographer, Senior	1								
Other Health & Social Care	2		+1				+100.0%		
Play Therapist	1		+1	+1			-100.0%	-100.0%	
Play Therapists/ Specialists	1		+1	+1			-100.0%	-100.0%	
Vaccinator - COVID 19 Vaccination Programme	24	+24	+24	+24	+9	-100.0%	-100.0%	-100.0%	+62.2%
Vaccinators	24	+24	+24	+24	+9	-100.0%	-100.0%	-100.0%	+62.2%
H&SC, Other	29	+5	+3	+5	+4	+22.8%	+13.3%	+22.8%	+15.2%
Health & Social Care Professionals	1,507	+354	+255	+225	+9	+30.7%	+20.4%	+17.5%	+0.6%
CEO (Band H2 Hospital)	1	+1				-100.0%			
CEO (Band H3 Hospital)		-1				-100.0%	-100.0%	-100.0%	-100.0%
Chief Executive, Hospital Group	2	+2	+2	+1		-100.0%	-100.0%	+100.0%	
Chief Executive Officer	1								
Director of Finance	1								
Head of Function /Service, Acute Services	1	+1	+1			-100.0%	-100.0%		
Head of Function /Service, Community Services	1	+1	+1			-100.0%	-100.0%		
Head of Process & Operations (HSE)		-1	-1			-100.0%	-100.0%	-100.0%	-100.0%
National Director, Assistant (Services)	3	+1	+1			+50.0%	+50.0%		
Network Manager (Hospital)		-1				-100.0%	-100.0%	-100.0%	-100.0%
Executive Management	10	+3	+4	+1		+42.9%	+66.7%	+11.1%	
Chief Executive Officer, Deputy		-2				-100.0%	-100.0%	-100.0%	-100.0%

Jul 2021 (Dec 2016 figure: 9,585)	WTE Jul 2021	WTE change since Dec 16	WTE change since Dec 18	WTE change since Dec 19	WTE change since Jun 21	% change since Dec 16	% change since Dec 18	% change since Dec 19	% change since Jun 21
Overall	11,897	+2,313	+1,511	+1,370	+120	+24.1%	+14.6%	+13.0%	+1.0%
Functional Officer	8	+2				+33.3%			
General Manager	10	+5	-3	-0		+92.0%	-26.2%	-4.0%	
Grade VIII	34	+17	+11	+11	-1	+102.5%	+49.7%	+49.7%	-1.5%
Senior Management (VIII & GM)	52	+22	+8	+11	-1	+73.4%	+18.2%	+26.9%	-1.0%
Management (VIII & above)	62	+25	+12	+12	-1	+67.6%	+24.0%	+24.0%	-0.8%
Accountant		-1				-100.0%	-100.0%	-100.0%	-100.0%
Grade V	195	+92	+85	+66	+3	+89.7%	+77.6%	+51.7%	+1.4%
Grade VI	68	+20	+14	+0	-0	+43.0%	+26.2%	+0.2%	-0.1%
Grade VII	81	+43	+24	+14	+1	+114.1%	+43.2%	+21.9%	+1.6%
Supplies Officer Grade A	1	-0	+1	+1		-28.0%	-100.0%	-100.0%	
Supplies Officer Grade B	3	-1	+0	+0		-25.0%	+4.9%	+7.1%	
Middle Management (V-VII)	347	+153	+124	+82	+4	+79.0%	+55.9%	+30.9%	+1.1%
Administrative/ Supervisory (V to VII)	347	+153	+124	+82	+4	+79.0%	+55.9%	+30.9%	+1.1%
Clerical Officer	883	+59	+2	+80	+25	+7.2%	+0.2%	+10.0%	+2.9%
Grade IV	426	+106	+66	-10	-5	+33.1%	+18.4%	-2.2%	-1.1%
Supplies Officer Grade C	11	+3	+2	-1	-1	+37.5%	+22.2%	-8.3%	-8.3%
Supplies Officer Grade D	17	-2	-2	+2		-8.8%	-10.4%	+11.8%	
Telephonist	3	-9	-2	-0	+0	-71.1%	-37.6%	-11.7%	+0.6%
Telephonist, Night		-1				-100.0%	-100.0%	-100.0%	-100.0%
Telephonist, Supervisor		-1				-100.0%	-100.0%	-100.0%	-100.0%
General Administrative (III & IV)	1,340	+156	+66	+71	+19	+13.2%	+5.2%	+5.6%	+1.4%
Clerical (III & IV)	1,340	+156	+66	+71	+19	+13.2%	+5.2%	+5.6%	+1.4%
Management & Administrative	1,749	+334	+202	+165	+23	+23.6%	+13.1%	+10.4%	+1.3%
Catering	79	+12	+10	+1	-1	+17.9%	+14.9%	+1.8%	-1.6%
Household Services	760	+119	+86	+93	+30	+18.5%	+12.8%	+14.0%	+4.1%
Other Labs & Associated	108	+65	+59	+53	+17	+151.0%	+121.8%	+96.6%	+18.7%
Other Support	119	+17	+6	+1	+1	+16.8%	+5.2%	+1.0%	+0.9%
Portering	388	+67	+92	+87	+9	+20.9%	+31.1%	+28.9%	+2.4%
Support	1,455	+280	+254	+236	+56	+23.8%	+21.2%	+19.4%	+4.0%
Boilerman	1								
Chargehand	5	+5	+3	+3		-100.0%	+141.0%	+164.8%	
Electrician	4	-1	-0	-0		-28.8%	-11.0%	-11.0%	
Gardener/ Groundsman	1	+1	+1			-100.0%	-100.0%		
Gardener/ Groundsman, Head	2								

Jul 2021 (Dec 2016 figure: 9,585)	WTE Jul 2021	WTE change since Dec 16	WTE change since Dec 18	WTE change since Dec 19	WTE change since Jun 21	% change since Dec 16	% change since Dec 18	% change since Dec 19	% change since Jun 21
Overall	11,897	+2,313	+1,511	+1,370	+120	+24.1%	+14.6%	+13.0%	+1.0%
General Operative	8	-7	+1	+2	+0	-49.1%	+9.1%	+29.9%	+0.1%
Maintenance Craftsman/Technician	6	-3	+0	+1		-31.7%	+0.7%	+20.0%	
Maintenance Foreman	4	+2	+1	+1	-0	+95.5%	+30.3%	+30.3%	-2.2%
Maintenance Foreman, Assistant	2	+1			-1	+100.0%			-33.3%
Maintenance Officer	1								
Plasterer			-1			-100.0%	-100.0%	-100.0%	-100.0%
Plumber	6	+2	+1	+1	+0	+47.2%	+23.0%	+20.2%	+1.4%
Maintenance	39	-1	+5	+7	-1	-2.4%	+15.0%	+22.8%	-2.5%
Engineer/ Engineering Officer		-2				-100.0%	-100.0%	-100.0%	-100.0%
Technical Services Officer	1	+1	+1			-100.0%	-100.0%		
Technical Services Officer, Assistant	1	+1	+1	+1		-100.0%	-100.0%	-100.0%	
Technical Services Officer, Chief Asst.	1	+1		+1		-100.0%		-100.0%	
Technical Services	3	+1	+2	+2		+50.0%	+200.0%	+200.0%	
Maintenance/ Technical	42	+0	+7	+9	-1	+0.1%	+20.3%	+28.3%	-2.3%
General Support	1,497	+280	+261	+246	+55	+23.0%	+21.1%	+19.6%	+3.8%
HCA, Nurse's Aide, etc.	736	+209	+139	+106	-1	+39.6%	+23.2%	+16.8%	-0.2%
Occupational Therapy Assistant	2	+2	+2	+2		-100.0%	-100.0%	-100.0%	
Physiotherapy Assistant	6	+1	-1	-1	-0	+25.0%	-10.7%	-10.7%	-1.6%
Radiography Aide		-1	-4	-5	-1	-100.0%	-100.0%	-100.0%	-100.0%
Health & Social Care Assistants	8	+2	-3	-4	-1	+37.5%	-27.9%	-31.3%	-11.8%
Health Care Assistant (Student Nurse/Midwife COVID-19)	4	+4	+4	+4	+4	-100.0%	-100.0%	-100.0%	-100.0%
HCA (Student Nurse/Midwife COVID-19)	4	+4	+4	+4	+4	-100.0%	-100.0%	-100.0%	-100.0%
Health Care Assistants	748	+215	+139	+106	+1	+40.3%	+22.9%	+16.5%	+0.2%
Chaplain	11	-3	-2	+1	+0	-19.4%	-16.3%	+6.0%	+2.8%
Dental Surgery Assistant (unqualified)		-1				-100.0%	-100.0%	-100.0%	-100.0%
Nursery Nurse	4	-1	+0	-1	-0	-14.3%	+0.5%	-15.0%	-4.1%
Other Care Grades	15	-4	-2	-0	+0	-22.2%	-12.2%	-0.8%	+0.8%
Care, other	15	-4	-2	-0	+0	-22.2%	-12.2%	-0.8%	+0.8%
Patient & Client Care	763	+210	+137	+106	+2	+38.1%	+21.9%	+16.1%	+0.2%

Source: Health Service Personnel Census

Longitudinal Employment Levels by Staff Group - Oct 2013 to Jul 2021

Jul 2021 (Dec 2016 figure: 9,585)	WTE Jul 2021	WTE change since Dec 16	WTE change since Dec 17	WTE change since Dec 18	WTE change since Dec 19	WTE change since Jun 21	% change since Dec 16	% change since Dec 17	% change since Dec 18	% change since Dec 19	% change since Jun 21
Overall	11,897	+2,313	+1,919	+1,511	+1,370	+120	+24.1%	+19.2%	+14.6%	+13.0%	+1.0%
Consultants	4	-1	-1	-1			-17.7%	-11.8%	-18.5%		
Registrars	5	+1	-1	-0	-1	-0	+31.3%	-19.7%	-3.6%	-19.7%	-2.8%
SHO/ Interns	12	+2	+2	-2	-1	-0	+14.6%	+18.4%	-15.4%	-8.9%	-1.3%
Medical/ Dental, other	1				+0					+51.0%	
Nurse/ Midwife Manager	30	+11	+10	+5	+3	+0	+55.6%	+47.5%	+17.6%	+9.6%	+1.0%
Nurse/ Midwife Specialist & AN/MP	5	+2	+3	+2	+3	+0	+96.8%	+105.0%	+69.7%	+146.0%	+0.4%
Staff Nurse/ Staff Midwife	85	-1	-1	-3	+2	+1	-0.8%	-1.6%	-3.5%	+2.9%	+0.7%
Nursing/ Midwifery Student		-1		-1			-100.0%	-100.0%	-100.0%	-100.0%	-100.0%
Therapy Professions	10	+1	+0	+1	+2	-0	+6.5%	+0.1%	+8.2%	+27.7%	-3.2%
Health Science/ Diagnostics	17	+2	+3	+1	+0	-1	+14.1%	+23.0%	+5.1%	+0.1%	-2.9%
Pharmacy	2	+1	+1	+1		+0	+72.4%	+33.3%	+33.3%		+1.0%
Management (VIII & above)	1	+1	+1	+1	+1		-100.0%	-100.0%	-100.0%	-100.0%	
Administrative/ Supervisory (V to VII)	4	+2	+1	+2	+1	+0	+123.0%	+48.7%	+52.7%	+17.1%	+1.8%
Clerical (III & IV)	23	+1	-2	-3	+1	+0	+3.9%	-6.5%	-12.8%	+6.5%	+0.8%
Support	18	-2	-1	-1	-3		-9.4%	-4.4%	-5.2%	-12.3%	
Maintenance/ Technical	1										
Health Care Assistants	74	+20	+18	+20	+18	+4	+37.6%	+32.8%	+36.7%	+32.6%	+6.1%
Care, other	1	-0	+0				-1.6%	+21.2%			
Bantry General	293	+40	+33	+20	+27	+4	+15.8%	+12.7%	+7.2%	+10.1%	+1.5%
Consultants	9	-1	-1	-2	-2	+0	-10.7%	-10.2%	-14.3%	-14.7%	+1.4%
Registrars	4	+2	+1	+1	-2	-1	+100.0%	+33.3%	+33.3%	-33.3%	-20.0%
SHO/ Interns	10	-2	+0	-1	-0	+0	-14.3%	+2.9%	-6.5%	-1.3%	+4.5%
Nurse/ Midwife Manager	23	+3	+3	+4	+1	-1	+15.6%	+12.5%	+24.4%	+4.8%	-2.7%
Nurse/ Midwife Specialist & AN/MP	2	+2	+2	+2	+2		+182.9%	+182.9%	+182.9%	+182.9%	
Staff Nurse/ Staff Midwife	78	+1	-5	-5	-7	+1	+1.7%	-6.4%	-6.3%	-8.5%	+1.0%
Nursing/ Midwifery Student				-1			-100.0%	-100.0%	-100.0%	-100.0%	-100.0%
Therapy Professions	4	+2	+2	+1	-1	-0	+72.1%	+72.1%	+42.4%	-15.7%	-8.2%
Health Science/ Diagnostics	16	+2	+3	+3	+2	+1	+15.6%	+19.8%	+18.1%	+14.8%	+3.4%
Pharmacy	3	+2	+2	+2	+0	+1	+155.8%	+230.0%	+230.0%	+10.0%	+17.9%
Management (VIII & above)	1	+1	+1	+1	+1		-100.0%	-100.0%	-100.0%	-100.0%	
Administrative/ Supervisory (V to VII)	7	+3	+3	+3	+2	+0	+72.6%	+93.2%	+91.1%	+38.6%	+0.3%
Clerical (III & IV)	32	-1	+2	-1	-2	-0	-1.6%	+7.1%	-2.1%	-5.4%	-1.3%

Jul 2021 (Dec 2016 figure: 9,585)	WTE Jul 2021	WTE change since Dec 16	WTE change since Dec 17	WTE change since Dec 18	WTE change since Dec 19	WTE change since Jun 21	% change since Dec 16	% change since Dec 17	% change since Dec 18	% change since Dec 19	% change since Jun 21
Overall	11,897	+2,313	+1,919	+1,511	+1,370	+120	+24.1%	+19.2%	+14.6%	+13.0%	+1.0%
Support	17	+10	+9	+6	+5	-0	+144.5%	+110.9%	+53.4%	+40.8%	-2.8%
Health Care Assistants	43	-3	-4	-3	-1	+0	-6.4%	-7.8%	-6.4%	-1.9%	+0.7%
Care, other	0										
Mallow General	250	+21	+17	+12	-2	-0	+9.4%	+7.5%	+4.8%	-0.6%	-0.1%
Consultants	220	+46	+29	+30	+15	-1	+26.5%	+15.2%	+16.0%	+7.4%	-0.3%
Registrars	238	+46	+37	+33	+24	+6	+23.7%	+18.2%	+16.4%	+11.2%	+2.6%
SHO/ Interns	198	+22	+18	+15	+19	-8	+12.4%	+10.0%	+8.1%	+10.4%	-3.9%
Medical/ Dental, other	6	+4	+4	+2	+1	+1	+138.3%	+150.6%	+32.6%	+10.6%	+10.6%
Nurse/ Midwife Manager	263	+42	+39	+23	-8	+8	+19.0%	+17.2%	+9.8%	-2.8%	+3.1%
Nurse/ Midwife Specialist & AN/MP	81	+29	+23	+22	+23	+1	+55.5%	+38.3%	+37.2%	+39.3%	+1.8%
Staff Nurse/ Staff Midwife	1,409	+230	+182	+77	+159	-4	+19.5%	+14.8%	+5.8%	+12.7%	-0.3%
Nursing/ Midwifery Student	67	+32	+1	+15	+12	+11	+91.6%	+1.1%	+29.0%	+20.9%	+18.9%
Nursing/ Midwifery other	3	+0	+1	+2	+1	-0	+6.7%	+19.6%	+101.2%	+33.3%	-1.2%
Therapy Professions	155	+55	+48	+38	+35	-1	+54.3%	+45.1%	+31.9%	+29.1%	-0.6%
Health Science/ Diagnostics	401	+55	+51	+43	+24	-4	+15.8%	+14.5%	+11.9%	+6.4%	-0.9%
Social Workers	20	+3	+2	+2	+4	+1	+20.4%	+11.2%	+12.5%	+22.5%	+4.9%
Psychologists	1	+1	+1	+1	+1	+1	-100.0%	-100.0%	-100.0%	-100.0%	-100.0%
Pharmacy	65	+29	+26	+22	+19	+3	+79.3%	+64.4%	+50.1%	+41.3%	+5.0%
H&SC, Other	4	-14	-12	-12	-10	-2	-79.4%	-77.0%	-76.7%	-73.1%	-36.4%
Management (VIII & above)	15	+6	+8	+6	+5	-1	+66.6%	+114.1%	+66.6%	+49.9%	-6.1%
Administrative/ Supervisory (V to VII)	107	+41	+40	+46	+25	+2	+62.9%	+60.6%	+76.2%	+30.4%	+2.2%
Clerical (III & IV)	391	+17	+11	-7	+4	+3	+4.6%	+2.9%	-1.8%	+0.9%	+0.7%
Support	678	+170	+167	+153	+132	+40	+33.4%	+32.7%	+29.3%	+24.2%	+6.2%
Maintenance/ Technical	2										
Health Care Assistants	204	+60	+55	+39	+40	-3	+41.6%	+36.6%	+23.9%	+24.2%	-1.6%
Care, other	8	+0	-1	+0	-1	-0	+3.6%	-7.8%	+0.2%	-8.3%	-1.5%
Cork University	4,537	+874	+728	+551	+523	+53	+23.8%	+19.1%	+13.8%	+13.0%	+1.2%
Consultants	52	+11	+6	+7	+6	+0	+27.6%	+12.7%	+15.8%	+13.9%	+0.9%
Registrars	51	+4	+1	+2	-2	+3	+8.6%	+2.6%	+4.1%	-3.7%	+7.0%
SHO/ Interns	74	+16	+3	+2	+3	-2	+27.8%	+4.3%	+2.3%	+4.0%	-2.2%
Nurse/ Midwife Manager	127	+37	+11	+1	-2	+0	+40.9%	+9.3%	+1.2%	-1.2%	+0.1%
Nurse/ Midwife Specialist & AN/MP	19	+3	+7	+11	+10	-1	+17.6%	+59.5%	+139.1%	+98.7%	-2.9%
Staff Nurse/ Staff Midwife	311	+23	+37	+27	+29	-3	+7.9%	+13.3%	+9.5%	+10.4%	-0.9%
Nursing/ Midwifery Student	13	-7	+6	+11	+11	-0	-34.8%	+91.0%	+389.7%	+568.5%	-1.0%

Jul 2021 (Dec 2016 figure: 9,585)	WTE Jul 2021	WTE change since Dec 16	WTE change since Dec 17	WTE change since Dec 18	WTE change since Dec 19	WTE change since Jun 21	% change since Dec 16	% change since Dec 17	% change since Dec 18	% change since Dec 19	% change since Jun 21
Overall	11,897	+2,313	+1,919	+1,511	+1,370	+120	+24.1%	+19.2%	+14.6%	+13.0%	+1.0%
Nursing/ Midwifery other	3	-1	+1	+1	+0		-23.8%	+44.2%	+44.2%	+1.9%	
Therapy Professions	36	+12	+4	+4	+3	+1	+51.9%	+13.8%	+13.3%	+9.8%	+3.4%
Health Science/ Diagnostics	104	+25	+22	+16	+17	-0	+31.1%	+26.2%	+18.3%	+20.2%	-0.4%
Social Workers	9	+3	+2	+0	+0	-0	+42.4%	+37.9%	+5.0%	+5.5%	-0.6%
Psychologists	1		-0					-9.1%			
Pharmacy	21	+3	+3	+3	-1	-1	+17.6%	+15.2%	+17.8%	-4.7%	-5.3%
H&SC, Other			-4	-4	-4		-100.0%	-100.0%	-100.0%	-100.0%	-100.0%
Management (VIII & above)	10	+2	+2	+2	+2		+25.0%	+25.0%	+25.0%	+25.0%	
Administrative/ Supervisory (V to VII)	50	+26	+15	+16	+10	+0	+108.2%	+41.3%	+45.1%	+26.1%	+0.2%
Clerical (III & IV)	191	+63	+32	+27	+24	+0	+49.4%	+19.9%	+16.5%	+14.1%	+0.1%
Support	78	-23	+20	+15	+17	-2	-23.1%	+35.2%	+24.0%	+27.2%	-2.0%
Maintenance/ Technical	11	-2	+5	+5	+5		-16.8%	+81.2%	+81.5%	+85.9%	
Health Care Assistants	137	+29	+10	+1	-1	+2	+26.5%	+7.5%	+1.0%	-0.6%	+1.1%
Care, other	3	-2	-0	-0	+1		-35.8%	-8.3%	-8.3%	+18.5%	
Mercy University	1,302	+221	+182	+148	+129	-2	+20.5%	+16.2%	+12.8%	+11.0%	-0.1%
Consultants	0	+0	+0	+0	+0		-100.0%	-100.0%	-100.0%	-100.0%	
Medical/ Dental, other	1	+1	+1	+1		-2	-100.0%	-100.0%	-100.0%		-68.2%
Nurse/ Midwife Manager	14	+8	+12	+11	+10	+4	+129.0%	+575.5%	+350.3%	+237.8%	+35.0%
Staff Nurse/ Staff Midwife	3	+3	+3	+3	+3	-0	-100.0%	-100.0%	-100.0%	-100.0%	-10.0%
Pharmacy	1	+1	+1	+1	+1	+1	-100.0%	-100.0%	-100.0%	-100.0%	-100.0%
H&SC, Other	24	+24	+24	+24	+24	+9	-100.0%	-100.0%	-100.0%	-100.0%	+62.2%
Management (VIII & above)	14	+8	+0	+0	+2	+1	+135.0%	+0.7%	+0.7%	+17.5%	+3.9%
Administrative/ Supervisory (V to VII)	18	+14	+12	+7	+2	+1	+354.7%	+219.1%	+64.0%	+12.9%	+4.7%
Clerical (III & IV)	24	+22	+21	+21	+22	+7	+873.4%	+593.7%	+671.2%	+1107.0%	+44.6%
Health Care Assistants	5	+5	+5	+5	+5	-1	-100.0%	-100.0%	-100.0%	-100.0%	-18.9%
Public Health Nurse	0	+0	+0	+0	+0		-100.0%	-100.0%	-100.0%	-100.0%	
Hospital Group HQ	105	+86	+80	+74	+70	+19	+473.6%	+318.9%	+239.4%	+202.8%	+22.1%
Consultants	32	+3	+3	+0	+1	-0	+10.3%	+11.3%	+0.8%	+2.9%	-1.0%
Registrars	21	+4	+0	+2	+0	-3	+26.1%	+0.8%	+11.6%	+1.6%	-12.0%
SHO/ Interns	31	+6	+5	+4	+4		+24.0%	+19.2%	+14.8%	+14.8%	
Nurse/ Midwife Manager	74	+16	+14	+8	+8	-1	+26.9%	+23.2%	+12.1%	+11.5%	-1.3%
Nurse/ Midwife Specialist & AN/MP	13	+2	+2	+3	+2		+21.0%	+15.1%	+32.3%	+22.3%	
Staff Nurse/ Staff Midwife	219	+14	+12	-3	-4	-0	+6.6%	+5.8%	-1.5%	-1.8%	-0.1%
Nursing/ Midwifery Student	5	+5	-1	+5	+5		-100.0%	-16.7%	+900.0%	-100.0%	

Jul 2021 (Dec 2016 figure: 9,585)	WTE Jul 2021	WTE change since Dec 16	WTE change since Dec 17	WTE change since Dec 18	WTE change since Dec 19	WTE change since Jun 21	% change since Dec 16	% change since Dec 17	% change since Dec 18	% change since Dec 19	% change since Jun 21
Overall	11,897	+2,313	+1,919	+1,511	+1,370	+120	+24.1%	+19.2%	+14.6%	+13.0%	+1.0%
Nursing/ Midwifery other	2										
Therapy Professions	47	+12	+11	+10	+7	+0	+32.4%	+31.8%	+26.0%	+16.4%	+0.1%
Health Science/ Diagnostics	24	+3	+3	+2	+1	+0	+12.9%	+14.1%	+9.2%	+4.3%	+2.0%
Social Workers	3										
Psychologists	1										
Pharmacy	14	+5	+5	+5	+4	-1	+52.5%	+57.0%	+53.7%	+41.9%	-6.5%
Management (VIII & above)	7	+1	+1				+16.7%	+17.6%			
Administrative/ Supervisory (V to VII)	44	+6	+4	+5	+4	+0	+16.3%	+8.9%	+12.4%	+8.6%	+0.0%
Clerical (III & IV)	164	+37	+40	+32	+22	+8	+29.0%	+32.4%	+24.2%	+15.4%	+4.8%
Support	118	+18	+18	+21	+19	+4	+18.6%	+18.1%	+21.5%	+19.1%	+3.8%
Maintenance/ Technical	4										
Health Care Assistants	28	-10	-11	-6	-7		-25.5%	-27.2%	-18.5%	-20.2%	
South Infirmary Victoria University	852	+122	+107	+87	+65	+7	+16.7%	+14.4%	+11.3%	+8.3%	+0.8%
Consultants	40	+5	+7	+5	+2	+0	+14.4%	+21.1%	+13.7%	+5.8%	+0.1%
Registrars	54	+13	+6	+2	+0	+0	+31.1%	+13.6%	+4.3%	+0.2%	+0.1%
SHO/ Interns	80	+12	+16	+12	+11	-2	+18.0%	+25.4%	+17.3%	+15.2%	-2.2%
Medical/ Dental, other			-1	-2			-100.0%	-100.0%	-100.0%	-100.0%	-100.0%
Nurse/ Midwife Manager	111	+34	+36	+34	+5	-0	+43.9%	+48.4%	+43.4%	+4.9%	-0.2%
Nurse/ Midwife Specialist & AN/MP	22	+11	+11	+12	+9	-0	+97.8%	+101.6%	+111.1%	+71.7%	-0.4%
Staff Nurse/ Staff Midwife	358	+19	+3	-16	+12	-3	+5.6%	+0.9%	-4.3%	+3.6%	-0.9%
Nursing/ Midwifery Student	22	+22	+21	+18	+18	+0	+4392.0%	+2146.0%	+461.5%	+399.1%	+2.1%
Nursing/ Midwifery other	1	+1	+1	+1			-100.0%	-100.0%	-100.0%		
Therapy Professions	34	+6	+5	+4	+8	-2	+23.8%	+19.2%	+14.6%	+29.2%	-6.0%
Health Science/ Diagnostics	88	+26	+23	+20	+21	+2	+41.7%	+34.3%	+28.7%	+31.0%	+2.9%
Social Workers	2	+1	+1	+1	+1		+33.3%	+33.3%	+33.3%	+33.3%	
Pharmacy	13	+6	+6	+4	+2	-1	+78.6%	+78.6%	+47.1%	+15.7%	-3.8%
H&SC, Other	1	-1	-1	-1	-1	-1	-50.0%	-50.0%	-50.0%	-50.0%	-50.0%
Management (VIII & above)	4	+3					+300.0%				
Administrative/ Supervisory (V to VII)	20	+10	+11	+11	+8	-1	+91.6%	+111.8%	+109.6%	+71.9%	-2.7%
Clerical (III & IV)	134	+9	+5	+2	+4	+3	+7.1%	+3.7%	+1.9%	+3.4%	+2.6%
Support	185	+30	+29	+11	+15	+1	+19.1%	+18.7%	+6.5%	+9.0%	+0.7%
Health Care Assistants	87	+59	+58	+40	+26	+0	+210.8%	+200.3%	+84.7%	+43.1%	+0.3%
Care, other	1	-1	-1		+1	+1	-50.0%	-50.0%		-100.0%	+300.0%
UH Kerry	1,257	+263	+236	+157	+143	-1	+26.5%	+23.1%	+14.3%	+12.8%	-0.1%

Jul 2021 (Dec 2016 figure: 9,585)	WTE Jul 2021	WTE change since Dec 16	WTE change since Dec 17	WTE change since Dec 18	WTE change since Dec 19	WTE change since Jun 21	% change since Dec 16	% change since Dec 17	% change since Dec 18	% change since Dec 19	% change since Jun 21
Overall	11,897	+2,313	+1,919	+1,511	+1,370	+120	+24.1%	+19.2%	+14.6%	+13.0%	+1.0%
Consultants	123	+21	+18	+11	+13	+2	+20.8%	+16.6%	+9.6%	+11.8%	+1.5%
Registrars	128	+30	+27	+23	+18	+4	+29.9%	+26.3%	+21.3%	+16.7%	+3.5%
SHO/ Interns	131	+28	+32	+29	+20	+5	+27.2%	+31.9%	+29.2%	+17.7%	+3.8%
Medical/ Dental, other	1	+1	-0	-0	-0	+0	-100.0%	-23.0%	-23.0%	-23.0%	+54.0%
Nurse/ Midwife Manager	151	+48	+13	+5	-0	+2	+46.3%	+9.3%	+3.7%	-0.1%	+1.2%
Nurse/ Midwife Specialist & AN/MP	44	+17	+17	+15	+10	+1	+64.1%	+61.7%	+51.0%	+29.1%	+1.7%
Staff Nurse/ Staff Midwife	618	+76	+81	+60	+75	+9	+13.9%	+15.1%	+10.8%	+13.7%	+1.5%
Nursing/ Midwifery Student	14	+13	-4	+5	+8	-0	+1338.0%	-19.7%	+61.2%	+139.7%	-0.8%
Nursing/ Midwifery other	5	+1	+2	+1	-0		+12.9%	+46.0%	+13.7%	-7.4%	
Therapy Professions	65	+21	+12	+9	+10	+2	+46.7%	+21.7%	+15.1%	+18.2%	+3.8%
Health Science/ Diagnostics	192	+30	+19	+22	+20	+4	+18.7%	+11.1%	+12.7%	+11.6%	+2.3%
Social Workers	3	+3	+2	+1	+0		+1400.0%	+200.0%	+50.0%	+3.4%	
Pharmacy	34	+15	+14	+11	+10	-2	+76.4%	+66.7%	+46.7%	+42.0%	-6.7%
H&SC, Other		-5	-5	-5	-5	-3	-100.0%	-100.0%	-100.0%	-100.0%	-100.0%
Management (VIII & above)	7	+3	+2	+1	-0	-0	+73.3%	+38.6%	+15.5%	-1.0%	-1.0%
Administrative/ Supervisory (V to VII)	69	+35	+26	+21	+20	+2	+101.7%	+60.8%	+43.7%	+41.4%	+3.0%
Clerical (III & IV)	262	+4	-2	-13	-6	-3	+1.5%	-0.8%	-4.6%	-2.3%	-1.3%
Support	209	+27	+8	+9	+10	+6	+14.9%	+4.0%	+4.3%	+4.9%	+3.1%
Maintenance/ Technical	18	+3	+2	+3	+2	-1	+16.3%	+15.5%	+16.3%	+15.5%	-5.0%
Health Care Assistants	83	+20	+18	+10	+6	-3	+31.5%	+28.2%	+14.2%	+7.8%	-3.0%
Care, other	2	-1	-1	-1			-33.3%	-33.3%	-33.3%		
UH Waterford	2,160	+387	+279	+216	+210	+25	+21.9%	+14.8%	+11.1%	+10.8%	+1.2%
Consultants	36	+5	+5	+7	+5	+1	+15.9%	+14.8%	+24.6%	+15.7%	+1.4%
Registrars	48	+7	+5	+6	+3	+1	+16.0%	+12.8%	+15.5%	+6.1%	+1.4%
SHO/ Interns	59	+12	+10	+9	+9	+1	+24.2%	+20.8%	+17.6%	+17.8%	+0.9%
Medical/ Dental, other	0			-2	-1				-90.5%	-82.6%	
Nurse/ Midwife Manager	81	+22	+15	+4	+1	-0	+37.8%	+23.1%	+4.9%	+1.1%	-0.2%
Nurse/ Midwife Specialist & AN/MP	23	+7	+5	+5	+6	+0	+40.7%	+30.7%	+24.9%	+32.1%	+0.4%
Staff Nurse/ Staff Midwife	358	+108	+99	+93	+71	+24	+43.0%	+38.5%	+34.9%	+24.7%	+7.1%
Nursing/ Midwifery Student	6	+6	-6	+4	+6	-21	-100.0%	-49.8%	+199.5%	-100.0%	-77.5%
Therapy Professions	30	+8	+7	+10	+7	+1	+36.2%	+32.1%	+47.2%	+32.4%	+4.2%
Health Science/ Diagnostics	43	+11	+11	+13	+17	-0	+34.7%	+34.2%	+42.4%	+62.7%	-0.1%
Social Workers	3	+3	+2	+2	+2		-100.0%	+198.0%	+198.0%	+198.0%	
Pharmacy	14	+4	+3	+2	+3	-0	+41.8%	+23.2%	+18.1%	+30.5%	-1.8%
H&SC, Other	1	+1	+1	+1	+1	+1	-100.0%	-100.0%	-100.0%	-100.0%	-100.0%

Jul 2021 (Dec 2016 figure: 9,585)	WTE Jul 2021	WTE change since Dec 16	WTE change since Dec 17	WTE change since Dec 18	WTE change since Dec 19	WTE change since Jun 21	% change since Dec 16	% change since Dec 17	% change since Dec 18	% change since Dec 19	% change since Jun 21
Overall	11,897	+2,313	+1,919	+1,511	+1,370	+120	+24.1%	+19.2%	+14.6%	+13.0%	+1.0%
Management (VIII & above)	3			+1	+1				+50.0%	+50.0%	
Administrative/ Supervisory (V to VII)	27	+16	+15	+14	+10	-1	+145.5%	+128.9%	+111.0%	+56.0%	-2.8%
Clerical (III & IV)	112	+1	+3	+5	+2	+1	+0.8%	+2.6%	+4.8%	+1.4%	+1.2%
Support	135	+50	+44	+43	+42	+7	+59.5%	+47.9%	+46.4%	+46.0%	+5.3%
Maintenance/ Technical	6	+1	+1	+1	+2	-0	+12.8%	+12.8%	+12.8%	+45.4%	-0.5%
Health Care Assistants	86	+35	+35	+33	+19	+2	+67.5%	+68.0%	+61.5%	+29.0%	+2.6%
Care, other		-1	-1	-1	-1	-1	-100.0%	-100.0%	-100.0%	-100.0%	-100.0%
South Tipperary General	1,071	+294	+254	+248	+204	+15	+37.8%	+31.1%	+30.1%	+23.5%	+1.4%
Consultants	1	-1	-1	-1	-1	-1	-50.0%	-50.0%	-50.0%	-50.0%	-50.0%
Registrars	1	+1	+1	+1	+1	+1	-100.0%	-100.0%	-100.0%	-100.0%	-100.0%
SHO/ Interns	6		+2	+1	+1			+50.0%	+20.0%	+20.0%	
Nurse/ Midwife Manager	8	-0	+0	-0	-0	-0	-1.3%	+7.0%	-4.1%	-3.6%	-2.0%
Staff Nurse/ Staff Midwife	29	+2	+2	+0	+1	-0	+6.1%	+8.5%	+0.5%	+1.9%	-1.1%
Clerical (III & IV)	7	+3	+2	+2	+1		+76.5%	+45.5%	+45.5%	+8.1%	
Support	19	+0	-3	-3	-1	-0	+0.5%	-13.5%	-13.1%	-6.1%	-2.3%
Maintenance/ Technical		-1	-1	-1			-100.0%	-100.0%	-100.0%	-100.0%	-100.0%
Lourdes Orthopaedic Kilcreene	71	+4	+3	-1	+1	-1	+5.8%	+4.7%	-0.9%	+0.9%	-1.3%

Source: Health Service Personnel Census