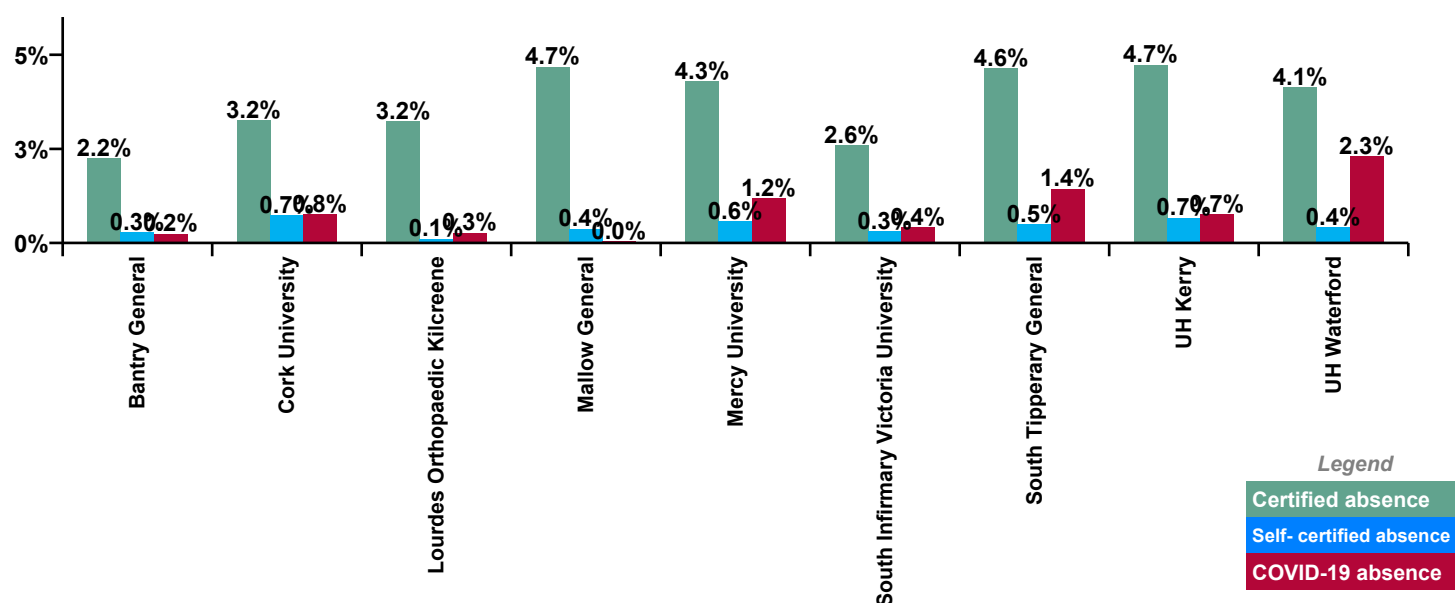


December 2020

South/South West Hospital Group Absence Rate - by Staff Category: Dec 2020	Certified absence	Self- certified absence	COVID-19 absence	Total absence rate	Certified	Self- certified	COVID-19
South/South West Hospital Group	3.8%	0.6%	1.1%	5.4%	69.6%	10.3%	20.1%
Medical & Dental	0.8%	0.1%	2.3%	3.2%	26.5%	2.6%	70.9%
Nursing & Midwifery	4.7%	0.9%	1.0%	6.6%	71.5%	13.3%	15.3%
Health & Social Care Professionals	2.7%	0.3%	0.8%	3.8%	70.9%	9.0%	20.1%
Management & Administrative	3.4%	0.3%	0.7%	4.4%	78.1%	6.8%	15.2%
General Support	4.2%	0.3%	0.9%	5.4%	77.9%	5.8%	16.3%
Patient & Client Care	5.7%	1.0%	1.0%	7.7%	73.8%	13.3%	12.9%

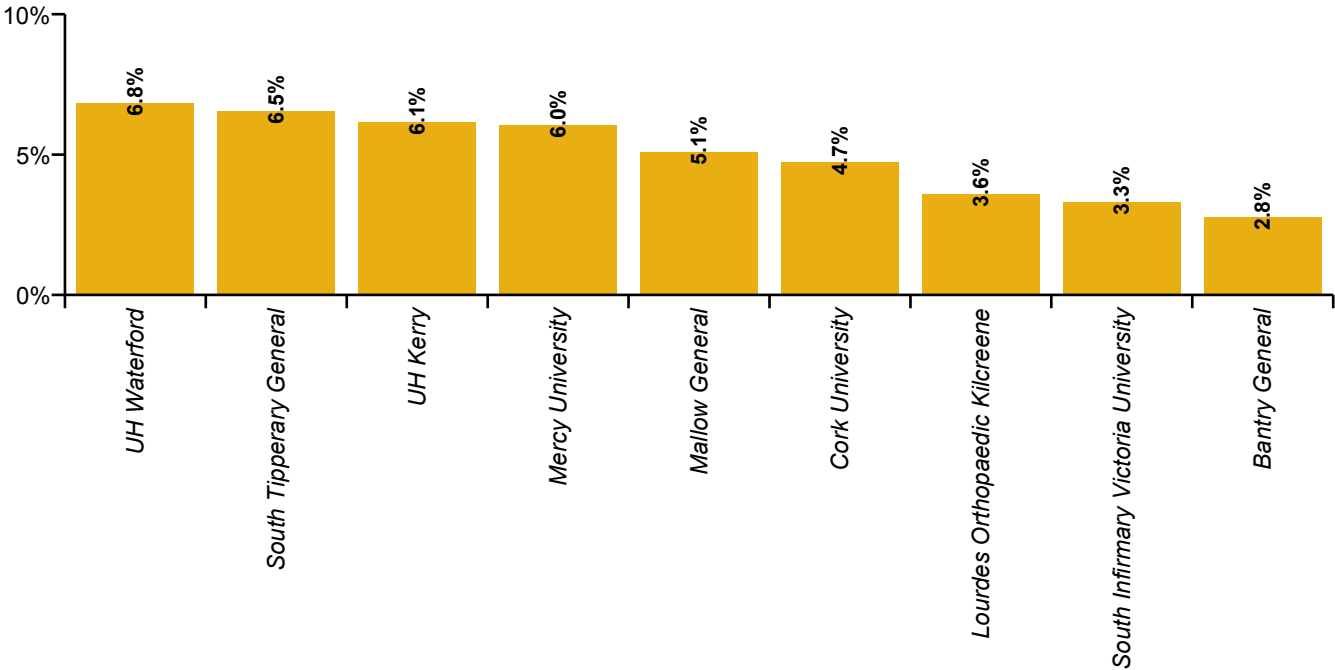
South/South West Hospital Group Absence Rate - by Hospital: Dec 2020	Certified absence	Self- certified absence	COVID-19 absence	Total absence rate	Certified	Self- certified	COVID-19
South/South West Hospital Group	3.8%	0.6%	1.1%	5.4%	69.6%	10.3%	20.1%
Bantry General	2.2%	0.3%	0.2%	2.8%	81.1%	10.2%	8.7%
Cork University	3.2%	0.7%	0.8%	4.7%	68.6%	15.3%	16.1%
Lourdes Orthopaedic Kilcreene	3.2%	0.1%	0.3%	3.6%	89.7%	2.9%	7.3%
Mallow General	4.7%	0.4%	0.0%	5.1%	91.8%	7.3%	0.9%
Mercy University	4.3%	0.6%	1.2%	6.0%	70.9%	9.4%	19.7%
South Infirmary Victoria University	2.6%	0.3%	0.4%	3.3%	78.1%	9.3%	12.6%
South Tipperary General	4.6%	0.5%	1.4%	6.5%	70.7%	7.4%	21.9%
UH Kerry	4.7%	0.7%	0.7%	6.1%	77.0%	10.8%	12.2%
UH Waterford	4.1%	0.4%	2.3%	6.8%	60.5%	6.0%	33.5%

Certified, self-certified & COVID-19: Dec 2020

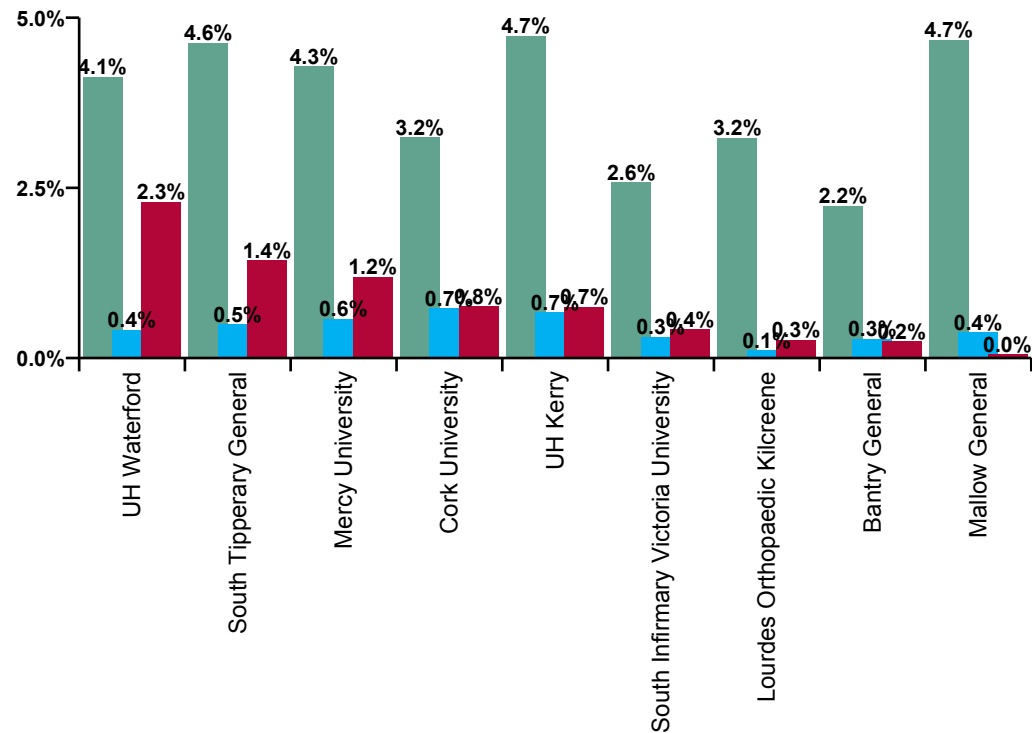
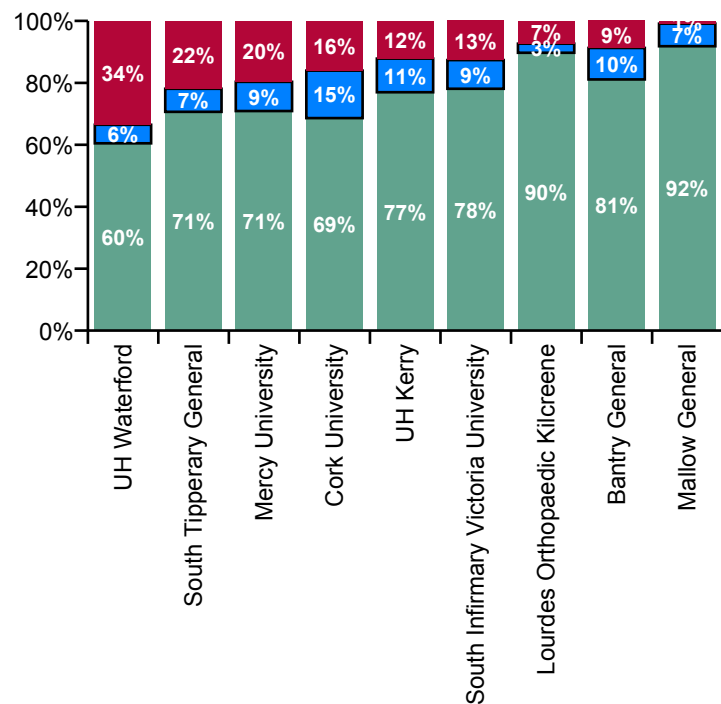


South/South West Hospital Group Absence type by Hospital: Dec 2020	Certified absence	Self- certified absence	COVID-19 absence	Total absence	Certified	Self- certified	COVID-19
Total (Dec 2020):	3.8%	0.6%	1.1%	5.4%	69.6%	10.3%	20.1%
<i>Bantry General</i>	2.2%	0.3%	0.2%	2.8%	81.1%	10.2%	8.7%
<i>Cork University</i>	3.2%	0.7%	0.8%	4.7%	68.6%	15.3%	16.1%
<i>Lourdes Orthopaedic Kilcreene</i>	3.2%	0.1%	0.3%	3.6%	89.7%	2.9%	7.3%
<i>Mallow General</i>	4.7%	0.4%	0.0%	5.1%	91.8%	7.3%	0.9%
<i>Mercy University</i>	4.3%	0.6%	1.2%	6.0%	70.9%	9.4%	19.7%
<i>South Infirmary Victoria University</i>	2.6%	0.3%	0.4%	3.3%	78.1%	9.3%	12.6%
<i>South Tipperary General</i>	4.6%	0.5%	1.4%	6.5%	70.7%	7.4%	21.9%
<i>UH Kerry</i>	4.7%	0.7%	0.7%	6.1%	77.0%	10.8%	12.2%
<i>UH Waterford</i>	4.1%	0.4%	2.3%	6.8%	60.5%	6.0%	33.5%

Total absence rate by Hospital: Dec 2020



South/South West Hospital Group Overall Absence Rate - by Hospital & Staff Category: Dec 2020	Medical & Dental	Nursing & Midwifery	Health & Social Care Professionals	Management & Administrative	General Support	Patient & Client Care	Certified absence	Self-certified absence	COVID-19 absence	Total absence
South/South West Hospital Group	3.2%	6.6%	3.8%	4.4%	5.4%	7.7%	3.8%	0.6%	1.1%	5.4%
<i>Bantry General</i>	2.1%	2.1%	0.2%	4.0%	8.1%	3.1%	2.2%	0.3%	0.2%	2.8%
<i>Cork University</i>	4.0%	5.2%	4.1%	4.2%	5.3%	4.1%	3.2%	0.7%	0.8%	4.7%
<i>Lourdes Orthopaedic Kilcreene</i>	0.0%	5.5%		2.5%	2.0%		3.2%	0.1%	0.3%	3.6%
<i>Mallow General</i>	2.0%	5.8%	0.0%	2.2%	6.5%	7.8%	4.7%	0.4%	0.0%	5.1%
<i>Mercy University</i>	2.3%	7.4%	3.0%	2.8%	9.2%	14.9%	4.3%	0.6%	1.2%	6.0%
<i>South Infirmary Victoria University</i>	1.0%	4.2%	2.8%	3.1%	2.8%	5.6%	2.6%	0.3%	0.4%	3.3%
<i>South Tipperary General</i>	1.5%	9.9%	4.0%	3.7%	3.9%	7.2%	4.6%	0.5%	1.4%	6.5%
<i>UH Kerry</i>	3.0%	8.5%	4.7%	7.9%	2.7%		4.7%	0.7%	0.7%	6.1%
<i>UH Waterford</i>	4.1%	7.8%	4.5%	6.1%	9.0%	13.5%	4.1%	0.4%	2.3%	6.8%



Certified absence

Self-certified absence

COVID-19 absence

South/South West Hospital Group Absence Rate - by Hospital, Staff Category & Absence type: Dec 2020

Bantry General by Staff Category Dec 2020	Certified absence	Self-certified absence	COVID-19 absence	Total absence	Certified	Self-certified	COVID-19
Total	2.2%	0.3%	0.2%	2.8%	81.1%	10.2%	8.7%
Medical & Dental	2.1%	0.0%	0.0%	2.1%	100.0%	0.0%	0.0%
Nursing & Midwifery	1.7%	0.3%	0.1%	2.1%	81.5%	13.7%	4.7%
Health & Social Care Professionals	0.2%	0.0%	0.0%	0.2%	100.0%	0.0%	0.0%
Management & Administrative	3.3%	0.7%	0.0%	4.0%	82.8%	17.2%	0.0%
General Support	7.2%	0.0%	0.9%	8.1%	89.1%	0.0%	10.9%
Patient & Client Care	2.2%	0.4%	0.6%	3.1%	68.5%	12.5%	19.0%

Cork University by Staff Category Dec 2020	Certified absence	Self-certified absence	COVID-19 absence	Total absence	Certified	Self-certified	COVID-19
Total	3.2%	0.7%	0.8%	4.7%	68.6%	15.3%	16.1%
Medical & Dental	0.4%	0.0%	3.6%	4.0%	8.9%	0.5%	90.5%
Nursing & Midwifery	3.8%	1.2%	0.2%	5.2%	73.1%	23.9%	3.0%
Health & Social Care Professionals	3.2%	0.4%	0.5%	4.1%	78.6%	9.9%	11.5%
Management & Administrative	3.3%	0.3%	0.5%	4.2%	78.9%	8.0%	13.1%
General Support	4.1%	0.4%	0.8%	5.3%	77.8%	6.9%	15.3%
Patient & Client Care	3.4%	0.8%	0.0%	4.1%	81.5%	18.5%	0.0%

Lourdes Orthopaedic Kilcreene by Staff Category Dec 2020	Certified absence	Self-certified absence	COVID-19 absence	Total absence	Certified	Self-certified	COVID-19
Total	3.2%	0.1%	0.3%	3.6%	89.7%	2.9%	7.3%
Medical & Dental				0.0%			
Nursing & Midwifery	4.8%	0.2%	0.5%	5.5%	86.8%	3.7%	9.4%
Health & Social Care Professionals	#DIV/0	#DIV/0	#DIV/0				
Management & Administrative	2.5%	0.0%	0.0%	2.5%	100.0%	0.0%	0.0%
General Support	2.0%	0.0%	0.0%	2.0%	100.0%	0.0%	0.0%
Patient & Client Care	#DIV/0	#DIV/0	#DIV/0				

Mallow General by Staff Category Dec 2020	Certified absence	Self-certified absence	COVID-19 absence	Total absence	Certified	Self-certified	COVID-19
Total	4.7%	0.4%	0.0%	5.1%	91.8%	7.3%	0.9%
Medical & Dental	1.6%	0.4%	0.0%	2.0%	79.4%	20.6%	0.0%
Nursing & Midwifery	5.1%	0.6%	0.0%	5.8%	88.9%	11.1%	0.0%
Health & Social Care Professionals	0.0%	0.0%	0.0%	0.0%			
Management & Administrative	1.5%	0.4%	0.4%	2.2%	65.6%	17.2%	17.2%
General Support	6.4%	0.1%	0.0%	6.5%	98.6%	1.4%	0.0%
Patient & Client Care	7.8%	0.0%	0.0%	7.8%	100.0%	0.0%	0.0%

Mercy University by Staff Category Dec 2020	Certified absence	Self-certified absence	COVID-19 absence	Total absence	Certified	Self-certified	COVID-19
Total	4.3%	0.6%	1.2%	6.0%	70.9%	9.4%	19.7%
Medical & Dental	0.2%	0.1%	2.1%	2.3%	7.7%	2.6%	89.7%
Nursing & Midwifery	5.7%	0.7%	1.0%	7.4%	76.7%	9.6%	13.7%
Health & Social Care Professionals	1.4%	0.0%	1.5%	3.0%	48.2%	1.0%	50.8%
Management & Administrative	2.0%	0.3%	0.6%	2.8%	69.7%	10.7%	19.7%
General Support	6.9%	0.4%	1.9%	9.2%	75.2%	4.2%	20.6%
Patient & Client Care	12.0%	2.4%	0.5%	14.9%	80.4%	16.4%	3.2%

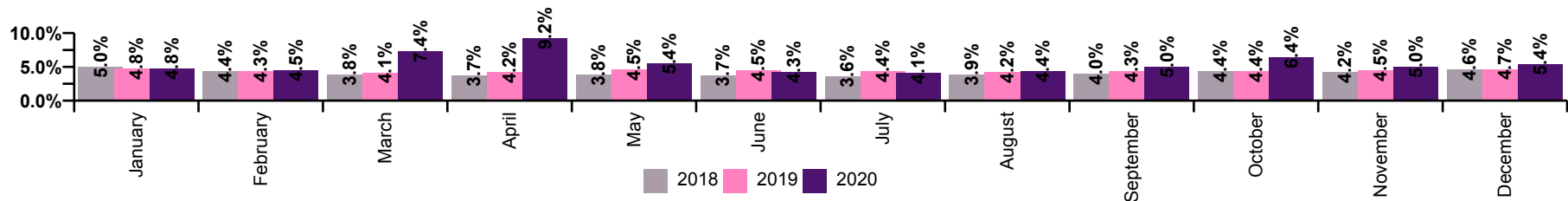
South Infirmary Victoria University by Staff Category Dec 2020	Certified absence	Self-certified absence	COVID-19 absence	Total absence	Certified	Self-certified	COVID-19
Total	2.6%	0.3%	0.4%	3.3%	78.1%	9.3%	12.6%
Medical & Dental	0.8%	0.0%	0.2%	1.0%	78.9%	0.0%	21.1%
Nursing & Midwifery	3.1%	0.5%	0.6%	4.2%	74.5%	10.9%	14.5%
Health & Social Care Professionals	2.1%	0.1%	0.6%	2.8%	75.7%	1.8%	22.5%
Management & Administrative	2.6%	0.3%	0.3%	3.1%	82.5%	9.4%	8.1%
General Support	2.3%	0.2%	0.2%	2.8%	83.6%	8.8%	7.6%
Patient & Client Care	4.7%	0.7%	0.3%	5.6%	83.5%	11.9%	4.6%

South Tipperary General by Staff Category Dec 2020	Certified absence	Self-certified absence	COVID-19 absence	Total absence	Certified	Self-certified	COVID-19
Total	4.6%	0.5%	1.4%	6.5%	70.7%	7.4%	21.9%
Medical & Dental	1.3%	0.2%	0.0%	1.5%	88.5%	11.5%	0.0%
Nursing & Midwifery	6.8%	0.7%	2.4%	9.9%	68.9%	6.7%	24.3%
Health & Social Care Professionals	2.8%	0.1%	1.0%	4.0%	71.0%	2.5%	26.5%
Management & Administrative	3.3%	0.2%	0.3%	3.7%	88.0%	5.1%	6.9%
General Support	3.0%	0.2%	0.7%	3.9%	75.4%	6.3%	18.4%
Patient & Client Care	4.2%	1.3%	1.7%	7.2%	59.0%	17.4%	23.5%

UH Kerry by Staff Category Dec 2020	Certified absence	Self-certified absence	COVID-19 absence	Total absence	Certified	Self-certified	COVID-19
Total	4.7%	0.7%	0.7%	6.1%	77.0%	10.8%	12.2%
Medical & Dental	2.2%	0.2%	0.5%	3.0%	74.0%	7.9%	18.0%
Nursing & Midwifery	6.6%	1.0%	0.9%	8.5%	77.0%	12.0%	10.9%
Health & Social Care Professionals	2.5%	1.2%	1.0%	4.7%	53.9%	25.5%	20.6%
Management & Administrative	7.1%	0.3%	0.5%	7.9%	88.9%	4.4%	6.7%
General Support	2.2%	0.0%	0.5%	2.7%	80.8%	1.6%	17.6%
Patient & Client Care	#DIV/0	#DIV/0	#DIV/0				

UH Waterford by Staff Category Dec 2020	Certified absence	Self- certified absence	COVID-19 absence	Total absence	Certified	Self- certified	COVID-19
Total	4.1%	0.4%	2.3%	6.8%	60.5%	6.0%	33.5%
Medical & Dental	1.0%	0.1%	3.0%	4.1%	24.3%	2.2%	73.5%
Nursing & Midwifery	4.7%	0.5%	2.6%	7.8%	60.4%	6.8%	32.8%
Health & Social Care Professionals	3.3%	0.3%	0.9%	4.5%	73.3%	6.5%	20.2%
Management & Administrative	4.3%	0.2%	1.5%	6.1%	71.1%	4.0%	24.9%
General Support	6.7%	0.6%	1.6%	9.0%	75.2%	6.6%	18.2%
Patient & Client Care	7.3%	1.1%	5.1%	13.5%	53.8%	8.4%	37.8%

South/South West Hospital Group Absence Rate - by Staff Category	Medical & Dental	Nursing & Midwifery	Health & Social Care Professionals	Management & Administrative	General Support	Patient & Client Care	Certified absence	Self- certified absence	COVID-19 absence	Total absence
SSW HG: 2020	1.8%	6.5%	4.3%	5.2%	6.0%	8.3%	3.8%	0.6%	1.1%	5.5%
December	3.2%	6.6%	3.8%	4.4%	5.4%	7.7%	3.8%	0.6%	1.1%	5.4%
November	1.5%	5.9%	3.3%	4.7%	5.9%	7.9%	3.7%	0.5%	0.8%	5.0%
October	2.4%	7.9%	4.8%	5.7%	7.3%	8.9%	3.8%	0.7%	1.9%	6.4%
September	1.5%	6.1%	3.9%	4.5%	5.8%	7.5%	3.6%	0.7%	0.8%	5.0%
August	1.1%	5.1%	3.3%	4.4%	5.3%	6.9%	3.5%	0.5%	0.3%	4.4%
July	0.8%	4.6%	4.0%	4.6%	4.8%	6.0%	3.3%	0.5%	0.3%	4.1%
June	0.9%	5.0%	3.9%	4.2%	5.1%	6.4%	3.3%	0.4%	0.5%	4.3%
May	1.7%	6.2%	4.3%	5.3%	6.5%	9.0%	3.8%	0.4%	1.2%	5.4%
April	3.2%	11.7%	7.7%	7.3%	8.5%	15.0%	4.6%	0.6%	4.0%	9.2%
March	4.5%	8.6%	4.7%	8.3%	6.0%	10.5%	4.4%	0.7%	2.2%	7.4%
February	0.9%	5.0%	3.8%	5.0%	6.3%	6.6%	3.9%	0.6%	0.0%	4.5%
January	0.6%	5.5%	4.3%	5.2%	5.4%	8.0%	4.0%	0.8%	0.0%	4.8%
SSW HG: 2019	1.0%	5.1%	3.9%	4.3%	5.6%	6.3%	3.8%	0.6%	0.0%	4.4%
December	0.8%	5.5%	3.8%	4.9%	5.3%	7.5%	3.8%	0.9%	0.0%	4.7%
November	1.1%	4.9%	4.5%	4.3%	5.6%	6.9%	3.7%	0.7%	0.0%	4.5%
October	1.1%	4.9%	3.8%	4.5%	5.8%	5.9%	3.8%	0.6%	0.0%	4.4%
September	0.9%	4.9%	4.8%	4.0%	5.1%	6.3%	3.7%	0.6%	0.0%	4.3%
August	1.0%	4.9%	4.2%	3.9%	5.0%	6.6%	3.7%	0.5%	0.0%	4.2%
July	1.2%	5.1%	3.4%	4.4%	5.7%	5.8%	3.9%	0.5%	0.0%	4.4%
June	1.1%	5.4%	4.2%	3.7%	5.3%	6.3%	4.0%	0.5%	0.0%	4.5%
May	1.2%	5.3%	4.3%	3.8%	5.5%	6.9%	4.0%	0.6%	0.0%	4.5%
April	1.0%	4.7%	3.7%	3.9%	5.8%	6.1%	3.5%	0.6%	0.0%	4.2%
March	1.0%	4.8%	3.4%	3.6%	6.1%	4.9%	3.5%	0.6%	0.0%	4.1%
February	0.8%	4.9%	3.3%	5.0%	5.3%	6.7%	3.7%	0.6%	0.0%	4.3%
January	1.0%	5.6%	3.4%	5.1%	6.6%	6.2%	4.1%	0.7%	0.0%	4.8%
SSW HG: 2018	0.8%	4.6%	3.6%	3.9%	5.4%	6.3%	3.4%	0.6%	0.0%	4.1%



South/South West Hospital Group Absence Rate - by Hospital	Bantry General	Cork University	Lourdes Orthopaedic Kilcreene	Mallow General	Mercy University	South Infirmary Victoria University	South Tipperary General	UH Kerry	UH Waterford	Total absence	Certified absence	Self- certified absence	COVID-19 absence
SSW HG: 2020 overall	4.7%	5.3%	4.1%	8.0%	7.1%	3.6%	6.3%	5.9%	4.8%	5.5%	3.8%	0.6%	1.1%
Medical & Dental	6.0%	1.5%	0.6%	2.3%	1.5%	2.1%	2.6%	2.7%	1.3%	1.8%	0.8%	0.1%	0.9%
Nursing & Midwifery	4.9%	6.3%	4.7%	9.6%	8.3%	4.3%	7.3%	7.7%	5.6%	6.5%	4.2%	0.9%	1.4%
Health & Social Care Professionals	1.7%	5.3%		2.8%	3.9%	2.1%	6.1%	4.1%	3.4%	4.3%	3.2%	0.4%	0.7%
Management & Administrative	6.0%	4.8%	1.4%	4.4%	5.6%	3.8%	5.9%	7.7%	5.5%	5.2%	4.0%	0.3%	0.9%
General Support	4.8%	6.1%	5.0%	11.6%	9.9%	3.3%	5.7%	3.9%	7.7%	6.0%	4.9%	0.3%	0.8%
Patient & Client Care	4.3%	5.6%		12.6%	17.4%	5.2%	9.3%		6.9%	8.3%	5.9%	0.8%	1.6%
Total December:	2.8%	4.7%	3.6%	5.1%	6.0%	3.3%	6.5%	6.1%	6.8%	5.4%	3.8%	0.6%	1.1%
Medical & Dental	2.1%	4.0%	0.0%	2.0%	2.3%	1.0%	1.5%	3.0%	4.1%	3.2%	0.8%	0.1%	2.3%
Nursing & Midwifery	2.1%	5.2%	5.5%	5.8%	7.4%	4.2%	9.9%	8.5%	7.8%	6.6%	4.7%	0.9%	1.0%
Health & Social Care Professionals	0.2%	4.1%		0.0%	3.0%	2.8%	4.0%	4.7%	4.5%	3.8%	2.7%	0.3%	0.8%
Management & Administrative	4.0%	4.2%	2.5%	2.2%	2.8%	3.1%	3.7%	7.9%	6.1%	4.4%	3.4%	0.3%	0.7%
General Support	8.1%	5.3%	2.0%	6.5%	9.2%	2.8%	3.9%	2.7%	9.0%	5.4%	4.2%	0.3%	0.9%
Patient & Client Care	3.1%	4.1%		7.8%	14.9%	5.6%	7.2%		13.5%	7.7%	5.7%	1.0%	1.0%
Total November:	5.2%	4.7%	1.7%	5.5%	5.8%	3.9%	6.6%	5.5%	4.5%	5.0%	3.7%	0.5%	0.8%
Medical & Dental	4.6%	1.2%	0.0%	1.3%	0.3%	9.7%	2.3%	3.0%	1.2%	1.5%	1.2%	0.1%	0.3%
Nursing & Midwifery	4.5%	5.5%	2.7%	5.8%	7.8%	3.5%	7.5%	7.5%	5.6%	5.9%	4.2%	0.7%	1.1%
Health & Social Care Professionals	4.2%	3.4%		0.4%	3.0%	1.3%	6.5%	3.8%	2.8%	3.3%	2.7%	0.3%	0.3%
Management & Administrative	8.4%	4.1%	0.0%	6.5%	4.0%	4.8%	5.7%	5.8%	4.4%	4.7%	3.6%	0.3%	0.8%
General Support	11.1%	5.9%	1.0%	7.1%	8.8%	4.9%	5.6%	3.3%	7.7%	5.9%	4.7%	0.3%	0.8%
Patient & Client Care	4.1%	7.1%		10.2%	12.2%	3.0%	11.6%		6.6%	7.9%	5.8%	1.0%	1.2%
Total October:	7.4%	7.4%	4.6%	6.0%	7.3%	3.8%	7.1%	6.3%	4.9%	6.4%	3.8%	0.7%	1.9%
Medical & Dental	9.7%	1.8%	0.0%	1.0%	1.4%	2.1%	6.8%	1.3%	2.4%	2.4%	1.4%	0.1%	0.9%
Nursing & Midwifery	8.9%	9.5%	5.3%	5.7%	9.4%	4.1%	7.1%	7.2%	6.3%	7.9%	4.0%	1.1%	2.8%
Health & Social Care Professionals	2.5%	5.7%		4.7%	6.3%	0.9%	8.3%	4.3%	2.9%	4.8%	3.1%	0.3%	1.4%
Management & Administrative	9.7%	5.8%	4.0%	6.4%	4.0%	4.9%	8.3%	6.7%	5.3%	5.7%	4.5%	0.3%	0.9%
General Support	11.1%	8.6%	5.2%	8.8%	10.9%	4.4%	6.3%	4.8%	6.8%	7.3%	5.2%	0.3%	1.8%
Patient & Client Care	3.9%	8.5%		9.5%	13.9%	3.9%	12.2%		6.4%	8.9%	5.3%	1.0%	2.6%
Total September:	3.9%	4.9%	3.8%	6.1%	7.2%	3.7%	4.6%	4.7%	4.6%	5.0%	3.6%	0.7%	0.8%
Medical & Dental	9.4%	0.9%	9.2%	3.7%	0.7%	1.3%	2.9%	1.7%	1.4%	1.5%	0.9%	0.2%	0.4%
Nursing & Midwifery	3.4%	6.0%	0.5%	6.3%	9.0%	5.1%	5.1%	5.8%	5.8%	6.1%	4.0%	1.1%	0.9%
Health & Social Care Professionals	0.0%	4.8%		0.3%	3.3%	3.0%	6.0%	2.3%	3.7%	3.9%	2.5%	0.5%	0.8%
Management & Administrative	5.5%	5.0%	11.2%	3.0%	4.6%	3.4%	4.0%	7.4%	2.9%	4.5%	3.7%	0.2%	0.6%
General Support	4.3%	5.6%	4.8%	7.1%	13.2%	3.3%	3.8%	8.0%	5.8%	5.8%	4.6%	0.4%	0.7%
Patient & Client Care	3.6%	4.8%		10.3%	16.6%	2.4%	7.6%		8.6%	7.5%	6.2%	0.5%	0.8%
Total August:	5.2%	4.1%	2.5%	6.2%	5.5%	2.9%	4.9%	4.9%	4.0%	4.4%	3.5%	0.5%	0.3%
Medical & Dental	5.0%	1.0%	0.0%	1.8%	0.1%	1.9%	0.4%	1.8%	1.0%	1.1%	0.9%	0.1%	0.1%
Nursing & Midwifery	5.3%	4.8%	2.1%	6.8%	7.0%	3.2%	5.6%	6.0%	4.4%	5.1%	3.9%	0.9%	0.3%
Health & Social Care Professionals	0.6%	3.7%		3.2%	2.4%	1.9%	8.7%	2.6%	2.7%	3.3%	2.5%	0.3%	0.5%
Management & Administrative	9.6%	4.4%	0.0%	0.9%	3.1%	2.7%	6.1%	8.3%	4.3%	4.4%	3.8%	0.2%	0.4%
General Support	5.6%	4.8%	4.7%	6.2%	9.0%	3.5%	5.2%	3.9%	8.2%	5.3%	4.5%	0.4%	0.5%
Patient & Client Care	5.1%	5.0%		12.5%	14.6%	3.5%	4.2%		6.3%	6.9%	5.9%	0.7%	0.2%
Total July:	3.0%	3.4%	1.9%	5.2%	6.9%	3.7%	4.9%	4.4%	3.4%	4.1%	3.3%	0.5%	0.3%
Medical & Dental	2.8%	0.3%	0.0%	0.0%	0.2%	1.4%	0.4%	1.0%	1.4%	0.8%	0.7%	0.0%	0.0%
Nursing & Midwifery	4.3%	3.6%	2.2%	9.0%	8.3%	3.7%	5.7%	4.7%	4.1%	4.6%	3.5%	0.7%	0.3%
Health & Social Care Professionals	0.0%	4.6%		0.3%	3.7%	2.6%	8.8%	4.1%	2.7%	4.0%	3.3%	0.2%	0.4%
Management & Administrative	6.0%	3.4%	0.0%	2.4%	5.8%	3.5%	5.4%	10.5%	3.6%	4.6%	3.6%	0.3%	0.7%
General Support	0.6%	4.1%	2.5%		10.0%	6.4%	4.7%	3.2%	5.5%	4.8%	4.2%	0.4%	0.3%
Patient & Client Care	1.6%	4.1%			16.7%	5.6%	6.1%		3.5%	6.0%	5.2%	0.7%	0.1%
Total June:	3.5%	4.0%	2.6%	6.7%	5.8%	2.4%	5.6%	4.0%	4.0%	4.3%	3.3%	0.4%	0.5%
Medical & Dental	6.1%	0.5%	0.0%	0.0%	0.1%	1.3%	2.5%	0.9%	1.0%	0.9%	0.6%	0.1%	0.2%
Nursing & Midwifery	3.8%	5.0%	2.1%	10.7%	6.6%	3.0%	6.1%	4.6%	4.3%	5.0%	3.9%	0.6%	0.4%
Health & Social Care Professionals	1.6%	5.1%		0.0%	3.1%	0.4%	6.1%	3.8%	3.1%	3.9%	3.1%	0.3%	0.5%
Management & Administrative	4.8%	3.5%	0.0%	5.1%	4.4%	2.1%	4.3%	7.5%	4.8%	4.2%	3.2%	0.2%	0.8%
General Support	3.7%	3.9%	5.5%	17.9%	7.6%	2.6%	7.5%	3.6%	7.4%	5.1%	4.0%	0.3%	0.8%
Patient & Client Care	1.9%	3.0%		1.8%	19.0%	5.4%	7.9%		6.0%	6.4%	5.0%	0.7%	0.6%
Total May:	3.7%	5.1%	3.9%	10.2%	7.7%	3.2%	6.0%	6.4%	4.6%	5.4%	3.8%	0.4%	1.2%
Medical & Dental	4.7%	2.3%	0.0%	0.0%	1.4%	2.0%	1.7%	1.4%	0.8%	1.7%	0.4%	0.0%	1.2%
Nursing & Midwifery	3.7%	5.8%	5.7%	11.4%	8.1%	4.4%	6.3%	8.1%	5.3%	6.2%	4.4%	0.7%	1.1%
Health & Social Care Professionals	3.3%	5.7%		0.0%	3.6%	1.0%	4.6%	4.6%	2.9%	4.3%	3.3%	0.2%	0.8%
Management & Administrative	2.7%	4.2%	0.0%	3.9%	7.2%	3.1%	5.7%	9.3%	5.6%	5.3%	3.7%	0.2%	1.3%
General Support	4.5%	6.3%	3.4%	13.1%	10.2%	1.6%	7.5%	5.8%	7.9%	6.5%	5.4%	0.2%	0.9%
Patient & Client Care	3.7%	3.5%		24.3%	23.5%	4.5%	10.8%		7.0%	9.0%	5.6%	0.6%	2.8%
Total April:	4.8%	9.8%	7.6%	29.7%	12.5%	4.5%	10.6%	9.7%	5.2%	9.2%	4.6%	0.6%	4.0%
Medical & Dental	5.2%	2.6%	0.0%	14.4%	2.4%	6.3%	9.2%	1.2%	1.2%	3.2%	0.8%	0.0%	2.4%
Nursing & Midwifery	5.7%	12.3%	11.4%	37.3%	14.8%	5.8%	12.8%	14.1%	6.1%	11.7%	4.8%	1.0%	5.9%
Health & Social Care Professionals	4.3%	10.5%		13.9%	6.9%	2.1%	6.7%	7.7%	3.6%	7.7%	5.1%	0.9%	1.7%
Management & Administrative	5.5%	5.8%	1.5%	6.4%	12.5%	3.2%	7.4%	12.1%	7.1%	7.3%	5.0%	0.1%	2.1%
General Support	0.0%	10.1%	5.5%	31.0%	12.6%	2.3%	7.3%	5.6%	8.3%	8.5%	6.4%	0.2%	1.9%
Patient & Client Care	4.3%	10.8%		53.3%	28.6%	7.8%	16.8%		5.9%	15.0%	6.9%	0.6%	7.6%
Total March:	6.9%		6.5%	6.0%	10.8%	5.3%	6.0%	8.8%	6.0%	7.4%	4.4%	0.7%	2.2%
Medical & Dental	17.8%		0.0%	1.7%	7.8%	4.4%	3.3%	7.9%	0.6%	4.5%	1.1%	0.2%	3.2%
Nursing & Midwifery	6.9%		8.3%	7.5%	9.9%	6.1%	7.2%	12.0%	7.7%	8.6%	5.0%	1.3%	2.4%
Health & Social Care Professionals	0.0%			3.3%	6.1%	4.1%	4.2%	4.4%	5.0%	4.7%	3.5%	0.4%	0.8%
Management & Administrative	7.6%		0.0%	6.4%	11.5%	6.1%	5.8%	10.8%	8.0%	8.3%	4.7%	0.3%	3.3%
General Support	1.1%		7.7%	11.6%	13.6%	3.1%	3.5%	3.0%	8.2%	6.0%	5.1%	0.1%	0.8%
Patient & Client Care	7.2%			5.1%	21.4%	5.5%	10.7%		4.9%	10.5%	8.1%	0.8%	1.7%
Total February:	4.1%	4.5%	5.2%	5.1%	4.8%	3.5%	5.3%		4.5%	4.5%	3.9%	0.6%	
Medical & Dental	0.7%	0.9%	0.0%	0.0%	0.6%	0.4%	1.6%		0.9%	0.9%	0.8%	0.1%	
Nursing & Midwifery	5.4%	4.8%	5.4%	7.3%	5.3%	4.4%	6.2%		4.6%	5.0%	4.1%	0.9%	
Health & Social Care Professionals	0.0%	4.7%		3.2%	2.5%	2.4%	5.0%		3.3%	3.8%	3.4%	0.4%	
Management & Administrative	2.9%	5.7%	0.0%	3.9%	3.6%	4.2%	5.2%		6.0%	5.0%	4.6%	0.4%	
General Support	3.1%	6.4%	8.0%	12.9%	5.9%	2.1%	5.3%		8.3%	6.3%	5.7%	0.6%	
Patient & Client Care	6.0%	3.3%		3.6%	14.2%	4.8%	7.7%			6.6%	5.7%	0.9%	
Total January:	4.8%	5.2%	5.0%	5.6%	4.9%	3.6%	6.2%	3.4%	4.6%	4.8%	4.0%	0.8%	
Medical & Dental	1.1%	0.4%	0.0%	3.0%	0.2%	0.1%	2.2%	0.9%	0.2%	0.6%	0.5%	0.1%	
Nursing & Midwifery	4.7%	5.8%	4.9%	7.1%	5.9%	4.3%	6.6%	5.4%	4.8%	5.5%	4.4%	1.1%	
Health & Social Care Professionals	4.4%	5.3%		5.4%	2.9%	2.5%	4.6%	2.8%	4.2%	4.3%	3.7%	0.6%	
Management & Administrative	2.3%	6.8%	0.0%	5.4%	3.0%	4.5%	8.2%	0.0%	6.7%	5.2%	4.6%	0.5%	
General Support	4.0%	5.7%	8.5%	13.7%	6.6%	1.8%	7.2%	3.3%	7.5%	5.4%	4.8%	0.6%	
Patient & Client Care	8.3%	6.4%		2.0%	13.1%	9.3%	7.7%		8.2%	8.0%	7.0%	1.0%	
SSW HG: 2019 overall	4.5%	4.4%	3.8%	5.2%	4.6%	3.0%	5.6%	4.4%	4.4%	4.4%	3.8%	0.6%	
Medical & Dental	0.9%	0.8%	5.0%	0.9%	0.8%	0.4%	1.4%	1.9%	1.1%	1.0%	0.9%	0.1%	
Nursing & Midwifery	5.8%	5.1%	4.6%	6.7%	5.0%	3.7%	6.7%	5.1%	4.7%	5.1%	4.2%	0.9%	
Health & Social Care Professionals	1.5%	4.2%		5.8%	3.2%	1.9%	4.9%	4.0%	4.3%	3.9%	3.4%	0.5%	
Management & Administrative	2.9%	4.5%	0.6%	4.4%	3.4%	3.4%	5.1%	5.4%	4.4%	4.3%	3.8%	0.4%	
General Support	3.6%	5.8%	2.9%	5.6%	7.8%	3.1%	5.0%	3.9%	7.7%	5.6%	5.2%	0.4%	
Patient & Client Care	5.7%	4.2%		5.5%	10.3%	3.2%	10.8%		6.8%	6.3%	5.6%	0.7%	
SSW HG: 2018 overall	4.9%	4.1%	3.9%	4.9%	4.1%	2.9%	4						