

# University of Limerick Hospital Group Employment Report: March 2021

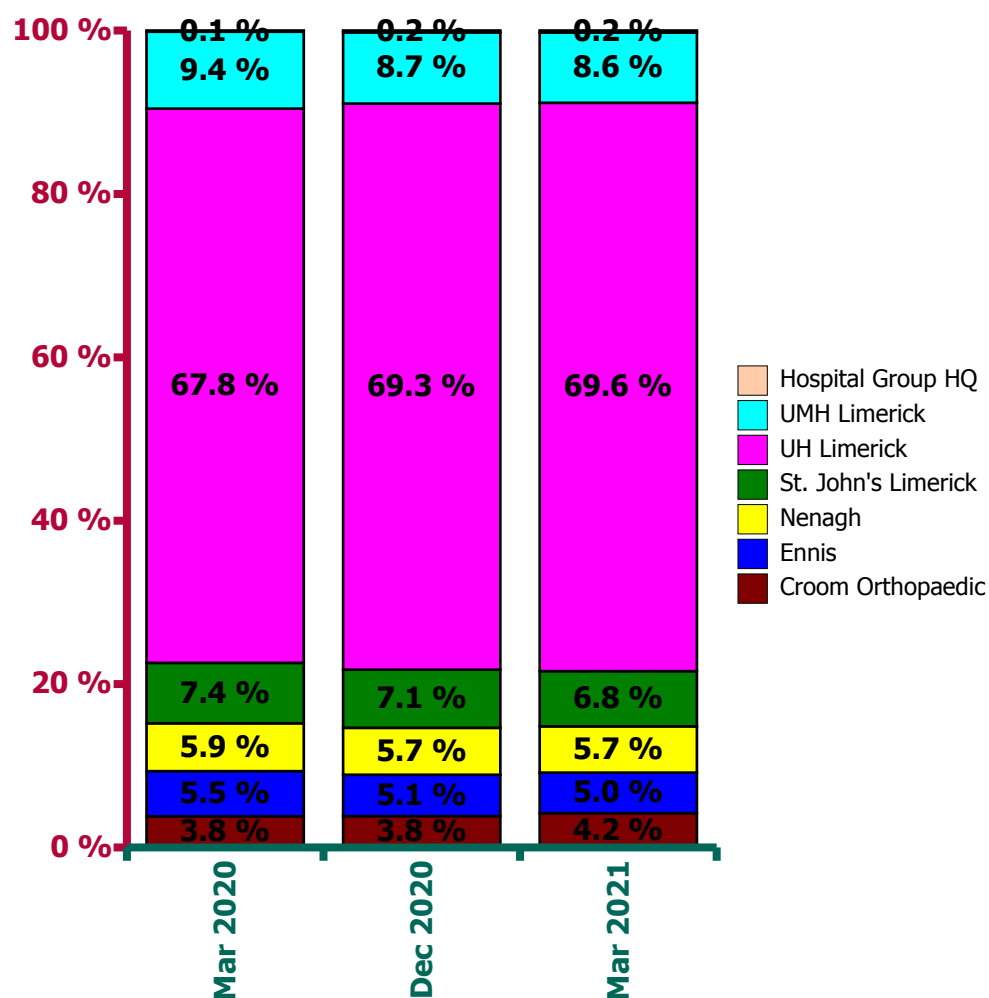
## Employment by Staff Group

Mar 2021 (Dec 2020 figure: 4,506)	WTE Feb 2021	WTE Mar 2021	WTE change since Feb 21	% change since Feb 21	WTE change since Dec 20	WTE change since Mar 20
<b>Overall</b>	<b>4,614</b>	<b>4,689</b>	<b>+75</b>	<b>+1.6%</b>	<b>+183</b>	<b>+494</b>
Consultants	183	185	+3	+1.5%	+2	+15
Registrars	202	202	-0	-0.1%	-2	+8
SHO/ Interns	250	252	+2	+0.7%	-7	+58
Medical/ Dental, other	1	1	+0	+1.2%		
<b>Medical &amp; Dental</b>	<b>636</b>	<b>640</b>	<b>+4</b>	<b>+0.7%</b>	<b>-7</b>	<b>+82</b>
Nurse/ Midwife Manager	352	351	-2	-0.5%	+4	+16
Nurse/ Midwife Specialist & AN/MP	86	87	+1	+0.7%	+5	+11
Staff Nurse/ Staff Midwife	1,314	1,357	+43	+3.3%	+57	+142
<i>Pre-registration Nurse/ Midwife Intern</i>	34	34	+0	+0.5%	+33	+1
<i>Pre-registration Nurse Intern (COVID-19)</i>				-100.0%	-1	
<i>Post-registration Nurse/ Midwife Student</i>	15	13	-2	-13.4%	+3	+0
Nursing/ Midwifery Student	49	47	-2	-3.8%	+35	+2
Nursing/ Midwifery other	11	12	+0	+3.5%	+1	+0
<b>Nursing &amp; Midwifery</b>	<b>1,814</b>	<b>1,854</b>	<b>+40</b>	<b>+2.2%</b>	<b>+102</b>	<b>+171</b>
Therapy Professions	99	102	+3	+3.3%	+5	+17
Health Science/ Diagnostics	254	256	+1	+0.5%	+2	+9
Social Workers	12	14	+2	+13.5%	+3	+3
Psychologists	4	4				+1
Pharmacy	51	51	-0	-0.4%	-0	+7
H&SC, Other	10	10	+0	+0.2%	+4	+1
<b>Health &amp; Social Care Professionals</b>	<b>430</b>	<b>436</b>	<b>+6</b>	<b>+1.4%</b>	<b>+12</b>	<b>+37</b>
Management (VIII & above)	36	34	-2	-4.8%	-3	-1
Administrative/ Supervisory (V to VII)	133	147	+14	+10.8%	+18	+35
Clerical (III & IV)	523	523	-0	-0.0%	+15	+28
<b>Management &amp; Administrative</b>	<b>692</b>	<b>704</b>	<b>+12</b>	<b>+1.8%</b>	<b>+30</b>	<b>+63</b>
Support	603	607	+4	+0.7%	+23	+84
Maintenance/ Technical	37	38	+0	+0.9%	+0	-0
<b>General Support</b>	<b>640</b>	<b>645</b>	<b>+5</b>	<b>+0.7%</b>	<b>+23</b>	<b>+84</b>
Health Care Assistants	397	404	+7	+1.7%	+20	+58
Care, other	6	7	+1	+21.3%	+1	-0
<b>Patient &amp; Client Care</b>	<b>403</b>	<b>411</b>	<b>+8</b>	<b>+2.0%</b>	<b>+22</b>	<b>+58</b>

## University of Limerick Hospital Group Employment by Hospital: Mar 2021

Mar 2021 (Dec 2020 figure: 4,506)	WTE Feb 2021	WTE Mar 2021	WTE change since Feb 21	% change since Feb 21	WTE change since Dec 20	WTE change since Mar 20
<b>Overall</b>	<b>4,614</b>	<b>4,689</b>	<b>+75</b>	<b>+1.6%</b>	<b>+183</b>	<b>+494</b>
Croom Orthopaedic	187	197	+10	+5.2%	+24	+37
Ennis	230	233	+4	+1.6%	+5	+1
Nenagh	262	266	+4	+1.5%	+7	+19
St. John's Limerick	314	317	+3	+1.1%	-4	+7
UH Limerick	3,203	3,263	+59	+1.8%	+140	+416
UMH Limerick	408	403	-4	-1.1%	+10	+9
Hospital Group HQ	11	11	+0	+1.1%	+1	+5

University of Limerick Hospital Group



University of Limerick Hospital Group Employment by Administration (HSE / S38): March 2021

Mar 2021 (Dec 2020 figure: 4,506)	WTE Feb 2021	WTE Mar 2021	WTE change since Feb 21	% change since Feb 21	WTE change since Dec 20	WTE change since Mar 20
<b>Overall</b>	<b>4,614</b>	<b>4,689</b>	<b>+75</b>	<b>+1.6%</b>	<b>+183</b>	<b>+494</b>
<b>HSE</b>	<b>4,300</b>	<b>4,372</b>	<b>+72</b>	<b>+1.7%</b>	<b>+187</b>	<b>+487</b>
<b>Section 38 Hospitals</b>	<b>314</b>	<b>317</b>	<b>+3</b>	<b>+1.1%</b>	<b>-4</b>	<b>+7</b>

## HSE

Mar 2021 (Dec 2020 figure: 4,186)	WTE Feb 2021	WTE Mar 2021	WTE change since Feb 21	% change since Feb 21	WTE change since Dec 20	WTE change since Mar 20
<b>Overall</b>	<b>4,300</b>	<b>4,372</b>	<b>+72</b>	<b>+1.7%</b>	<b>+187</b>	<b>+487</b>
Consultants	175	178	+3	+0.0%	+2	+15
Registrars	193	193	-0	-0.0%	-1	+11
SHO/ Interns	242	244	+2	+0.0%	-4	+59
Medical/ Dental, other	1	1	+0	+0.0%		
<b>Medical &amp; Dental</b>	<b>611</b>	<b>615</b>	<b>+4</b>	<b>+0.7%</b>	<b>-3</b>	<b>+86</b>
Nurse/ Midwife Manager	326	324	-3	-0.0%	+3	+13
Nurse/ Midwife Specialist & AN/MP	77	78	+1	+0.0%	+5	+10
Staff Nurse/ Staff Midwife	1,226	1,265	+39	+0.0%	+58	+142
<i>Pre-registration Nurse/ Midwife Intern</i>	34	34	+0	+0.0%	+33	+1
<i>Pre-registration Nurse Intern (COVID-19)</i>				-1.0%	-1	
<i>Post-registration Nurse/ Midwife Student</i>	15	13	-2	-0.1%	+3	+0
Nursing/ Midwifery Student	49	47	-2	-0.0%	+35	+2
Nursing/ Midwifery other	11	12	+0	+0.0%	+1	+1
<b>Nursing &amp; Midwifery</b>	<b>1,690</b>	<b>1,726</b>	<b>+36</b>	<b>+2.1%</b>	<b>+101</b>	<b>+169</b>
Therapy Professions	93	97	+3	+0.0%	+4	+16
Health Science/ Diagnostics	243	245	+1	+0.0%	+1	+7
Social Workers	12	14	+2	+0.1%	+3	+3
Psychologists	4	4		+0.0%		+1
Pharmacy	45	45	-0	-0.0%	-0	+6
H&SC, Other	10	10	+0	+0.0%	+4	+1
<b>Health &amp; Social Care Professionals</b>	<b>407</b>	<b>413</b>	<b>+6</b>	<b>+1.4%</b>	<b>+11</b>	<b>+33</b>
Management (VIII & above)	30	28	-2	-0.1%	-2	+0
Administrative/ Supervisory (V to VII)	113	128	+15	+0.1%	+19	+31
Clerical (III & IV)	482	481	-0	-0.0%	+15	+31
<b>Management &amp; Administrative</b>	<b>625</b>	<b>638</b>	<b>+13</b>	<b>+2.1%</b>	<b>+32</b>	<b>+63</b>
Support	564	568	+5	+0.0%	+25	+83
Maintenance/ Technical	35	36	+0	+0.0%	+0	-0
<b>General Support</b>	<b>599</b>	<b>604</b>	<b>+5</b>	<b>+0.8%</b>	<b>+25</b>	<b>+83</b>
Health Care Assistants	364	371	+7	+0.0%	+18	+54
Care, other	5	6	+1	+0.3%	+1	-0
<b>Patient &amp; Client Care</b>	<b>369</b>	<b>377</b>	<b>+8</b>	<b>+2.1%</b>	<b>+20</b>	<b>+54</b>

## Section 38 Hospitals

Mar 2021 (Dec 2020 figure: 321)	WTE Feb 2021	WTE Mar 2021	WTE change since Feb 21	% change since Feb 21	WTE change since Dec 20	WTE change since Mar 20
<b>Overall</b>	<b>314</b>	<b>317</b>	<b>+3</b>	<b>+1.1%</b>	<b>-4</b>	<b>+7</b>
Consultants	8	8		+0.0%		
Registrars	9	9		+0.0%	-1	-3
SHO/ Interns	8	8		+0.0%	-3	-1
<b>Medical &amp; Dental</b>	<b>25</b>	<b>25</b>			<b>-4</b>	<b>-4</b>
Nurse/ Midwife Manager	26	27	+1	+0.0%	+2	+2
Nurse/ Midwife Specialist & AN/MP	9	9		+0.0%		+1
Staff Nurse/ Staff Midwife	88	92	+3	+0.0%	-1	-0
Nursing/ Midwifery other				-1.0%		-1
<b>Nursing &amp; Midwifery</b>	<b>123</b>	<b>128</b>	<b>+4</b>	<b>+3.5%</b>	<b>+1</b>	<b>+2</b>
Therapy Professions	6	6	+0	+0.0%	+0	+1
Health Science/ Diagnostics	11	11		+0.0%	+1	+2
Pharmacy	6	6	+0	+0.0%	-0	+1
<b>Health &amp; Social Care Professionals</b>	<b>23</b>	<b>23</b>	<b>+0</b>	<b>+0.8%</b>	<b>+1</b>	<b>+4</b>
Management (VIII & above)	6	6		+0.0%	-1	-1
Administrative/ Supervisory (V to VII)	20	19	-1	-0.0%	-1	+4
Clerical (III & IV)	41	41		+0.0%		-3
<b>Management &amp; Administrative</b>	<b>67</b>	<b>66</b>	<b>-1</b>	<b>-1.5%</b>	<b>-2</b>	
Support	39	39	-0	-0.0%	-2	+1
Maintenance/ Technical	2	2		+0.0%		
<b>General Support</b>	<b>41</b>	<b>41</b>	<b>-0</b>	<b>-0.5%</b>	<b>-2</b>	<b>+1</b>
Health Care Assistants	33	33		+0.0%	+2	+4
Care, other	1	1		+0.0%		
<b>Patient &amp; Client Care</b>	<b>34</b>	<b>34</b>			<b>+2</b>	<b>+4</b>

## University of Limerick Hospital Group Employment by Hospital & Staff Category: March 2021

### Croom Orthopaedic

Mar 2021 (Dec 2020 figure: 173)	WTE Feb 2021	WTE Mar 2021	WTE change since Feb 21	% change since Feb 21	WTE change since Dec 20
<b>Overall</b>	<b>187</b>	<b>197</b>	<b>+10</b>	<b>+5.2%</b>	<b>+24</b>
Consultants	8	9	+1	+0.1%	+1
Registrars	4	4	+0	+0.0%	+1
SHO/ Interns	13	14	+1	+0.0%	+6
<b>Medical &amp; Dental</b>	<b>25</b>	<b>27</b>	<b>+1</b>	<b>+1</b>	<b>+8</b>
Nurse/ Midwife Manager	17	17	+0	+0.0%	-2
Nurse/ Midwife Specialist & AN/MP	5	6	+1	+0.2%	+1
Staff Nurse/ Staff Midwife	51	57	+6	+0.1%	+3
<b>Nursing &amp; Midwifery</b>	<b>73</b>	<b>80</b>	<b>+7</b>	<b>+7</b>	<b>+3</b>
Therapy Professions	2	2	-0	-0.0%	-0
Health Science/ Diagnostics	1	1	0	+0.0%	-0
<b>Health &amp; Social Care Professionals</b>	<b>3</b>	<b>3</b>	<b>-0</b>	<b>-0</b>	<b>-0</b>
Administrative/ Supervisory (V to VII)	2	3	+1	+0.4%	+1
Clerical (III & IV)	17	17	+0	+0.0%	-0
<b>Management &amp; Administrative</b>	<b>19</b>	<b>20</b>	<b>+1</b>	<b>+1</b>	<b>+1</b>
Support	19	21	+1	+0.1%	+13
Maintenance/ Technical	1	1	0	+0.0%	-1
<b>General Support</b>	<b>20</b>	<b>22</b>	<b>+1</b>	<b>+1</b>	<b>+12</b>
Health Care Assistants	45	45	-0	-0.0%	+0
Care, other	1	1	0	+0.0%	
<b>Patient &amp; Client Care</b>	<b>46</b>	<b>46</b>	<b>-0</b>	<b>-0</b>	<b>+0</b>

## Ennis

Mar 2021 (Dec 2020 figure: 228)	WTE Feb 2021	WTE Mar 2021	WTE change since Feb 21	% change since Feb 21	WTE change since Dec 20
<b>Overall</b>	<b>230</b>	<b>233</b>	<b>+4</b>	<b>+1.6%</b>	<b>+5</b>
Consultants	7	7	0	+0.0%	
Registrars	5	6	+1	+0.2%	+3
SHO/ Interns	5	5	-1	-0.1%	+0
<b>Medical &amp; Dental</b>	<b>17</b>	<b>18</b>	<b>+0</b>	<b>+0</b>	<b>+3</b>
Nurse/ Midwife Manager	24	24	+0	+0.0%	-0
Nurse/ Midwife Specialist & AN/MP	4	4	+0	+0.0%	+1
Staff Nurse/ Staff Midwife	72	74	+1	+0.0%	+1
<b>Nursing &amp; Midwifery</b>	<b>100</b>	<b>101</b>	<b>+1</b>	<b>+1</b>	<b>+2</b>
Therapy Professions	5	5	0	+0.0%	
Health Science/ Diagnostics	13	14	+1	+0.1%	+0
Pharmacy	2	2	0	+0.0%	
<b>Health &amp; Social Care Professionals</b>	<b>20</b>	<b>21</b>	<b>+1</b>	<b>+1</b>	<b>+0</b>
Administrative/ Supervisory (V to VII)	3	4	+1	+0.3%	-0
Clerical (III & IV)	39	40	+0	+0.0%	+1
<b>Management &amp; Administrative</b>	<b>42</b>	<b>44</b>	<b>+1</b>	<b>+1</b>	<b>+1</b>
Support	36	37	+0	+0.0%	-0
<b>General Support</b>	<b>36</b>	<b>37</b>	<b>+0</b>	<b>+0</b>	<b>-0</b>
Health Care Assistants	13	13	-1	-0.1%	-1
<b>Patient &amp; Client Care</b>	<b>13</b>	<b>13</b>	<b>-1</b>	<b>-1</b>	<b>-1</b>

## Nenagh

Mar 2021 (Dec 2020 figure: 259)	WTE Feb 2021	WTE Mar 2021	WTE change since Feb 21	% change since Feb 21	WTE change since Dec 20
<b>Overall</b>	<b>262</b>	<b>266</b>	<b>+4</b>	<b>+1.5%</b>	<b>+7</b>
Consultants	5	5	0	+0.0%	
Registrars	4	4	-0	-0.0%	-0
SHO/ Interns	11	10	-1	-0.1%	-1
<b>Medical &amp; Dental</b>	<b>20</b>	<b>18</b>	<b>-1</b>	<b>-1</b>	<b>-1</b>
Nurse/ Midwife Manager	30	29	-1	-0.0%	-1
Nurse/ Midwife Specialist & AN/MP	5	5	+0	+0.0%	+1
Staff Nurse/ Staff Midwife	82	84	+2	+0.0%	+3
<b>Nursing &amp; Midwifery</b>	<b>117</b>	<b>118</b>	<b>+2</b>	<b>+2</b>	<b>+2</b>
Therapy Professions	6	7	+1	+0.2%	-1
Health Science/ Diagnostics	7	7	0	+0.0%	-0
Pharmacy	2	2	0	+0.0%	+0
<b>Health &amp; Social Care Professionals</b>	<b>15</b>	<b>16</b>	<b>+1</b>	<b>+1</b>	<b>-2</b>
Administrative/ Supervisory (V to VII)	2	3	+1	+0.5%	+1
Clerical (III & IV)	36	36	-0	-0.0%	+2
<b>Management &amp; Administrative</b>	<b>38</b>	<b>39</b>	<b>+1</b>	<b>+1</b>	<b>+2</b>
Support	19	20	+2	+0.1%	+2
Maintenance/ Technical	3	3	0	+0.0%	
<b>General Support</b>	<b>22</b>	<b>23</b>	<b>+2</b>	<b>+2</b>	<b>+2</b>
Health Care Assistants	50	49	-0	-0.0%	+2
<b>Patient &amp; Client Care</b>	<b>50</b>	<b>49</b>	<b>-0</b>	<b>-0</b>	<b>+2</b>

## St. John's Limerick

Mar 2021 (Dec 2020 figure: 321)	WTE Feb 2021	WTE Mar 2021	WTE change since Feb 21	% change since Feb 21	WTE change since Dec 20
<b>Overall</b>	<b>314</b>	<b>317</b>	<b>+3</b>	<b>+1.1%</b>	<b>-4</b>
Consultants	8	8	0	+0.0%	
Registrars	9	9	0	+0.0%	-1
SHO/ Interns	8	8	0	+0.0%	-3
<b>Medical &amp; Dental</b>	<b>25</b>	<b>25</b>			<b>-4</b>
Nurse/ Midwife Manager	26	27	+1	+0.0%	+2
Nurse/ Midwife Specialist & AN/MP	9	9	0	+0.0%	
Staff Nurse/ Staff Midwife	88	92	+3	+0.0%	-1
<b>Nursing &amp; Midwifery</b>	<b>123</b>	<b>128</b>	<b>+4</b>	<b>+4</b>	<b>+1</b>
Therapy Professions	6	6	+0	+0.0%	+0
Health Science/ Diagnostics	11	11	0	+0.0%	+1
Pharmacy	6	6	+0	+0.0%	-0
<b>Health &amp; Social Care Professionals</b>	<b>23</b>	<b>23</b>	<b>+0</b>	<b>+0</b>	<b>+1</b>
Management (VIII & above)	6	6	0	+0.0%	-1
Administrative/ Supervisory (V to VII)	20	19	-1	-0.0%	-1
Clerical (III & IV)	41	41	0	+0.0%	
<b>Management &amp; Administrative</b>	<b>67</b>	<b>66</b>	<b>-1</b>	<b>-1</b>	<b>-2</b>
Support	39	39	-0	-0.0%	-2
Maintenance/ Technical	2	2	0	+0.0%	
<b>General Support</b>	<b>41</b>	<b>41</b>	<b>-0</b>	<b>-0</b>	<b>-2</b>
Health Care Assistants	33	33	0	+0.0%	+2
Care, other	1	1	0	+0.0%	
<b>Patient &amp; Client Care</b>	<b>34</b>	<b>34</b>			<b>+2</b>



## UH Limerick

Mar 2021 (Dec 2020 figure: 3,122)	WTE Feb 2021	WTE Mar 2021	WTE change since Feb 21	% change since Feb 21	WTE change since Dec 20
<b>Overall</b>	<b>3,203</b>	<b>3,263</b>	<b>+59</b>	<b>+1.8%</b>	<b>+140</b>
Consultants	140	142	+2	+0.0%	+1
Registrars	164	163	-1	-0.0%	-4
SHO/ Interns	201	203	+2	+0.0%	-9
Medical/ Dental, other	1	1	+0	+0.0%	
<b>Medical &amp; Dental</b>	<b>505</b>	<b>508</b>	<b>+3</b>	<b>+3</b>	<b>-13</b>
Nurse/ Midwife Manager	211	210	-1	-0.0%	+5
Nurse/ Midwife Specialist & AN/MP	58	58	-0	-0.0%	+1
Staff Nurse/ Staff Midwife	842	872	+30	+0.0%	+46
Nursing/ Midwifery Student	24	24	+0	+0.0%	+23
Nursing/ Midwifery other	7	7	+0	+0.1%	+1
<b>Nursing &amp; Midwifery</b>	<b>1,143</b>	<b>1,172</b>	<b>+29</b>	<b>+29</b>	<b>+77</b>
Therapy Professions	78	81	+3	+0.0%	+7
Health Science/ Diagnostics	223	223	+0	+0.0%	+2
Social Workers	11	13	+2	+0.1%	+3
Psychologists	4	4	0	+0.0%	
Pharmacy	41	41	-0	-0.0%	-0
H&SC, Other	10	10	+0	+0.0%	+4
<b>Health &amp; Social Care Professionals</b>	<b>366</b>	<b>370</b>	<b>+4</b>	<b>+4</b>	<b>+14</b>
Management (VIII & above)	22	20	-2	-0.1%	-2
Administrative/ Supervisory (V to VII)	101	112	+11	+0.1%	+16
Clerical (III & IV)	351	352	+1	+0.0%	+15
<b>Management &amp; Administrative</b>	<b>474</b>	<b>485</b>	<b>+11</b>	<b>+11</b>	<b>+28</b>
Support	445	447	+2	+0.0%	+13
Maintenance/ Technical	31	32	+0	+0.0%	+1
<b>General Support</b>	<b>476</b>	<b>479</b>	<b>+3</b>	<b>+3</b>	<b>+14</b>
Health Care Assistants	236	244	+8	+0.0%	+19
Care, other	3	5	+1	+0.4%	+1
<b>Patient &amp; Client Care</b>	<b>239</b>	<b>249</b>	<b>+9</b>	<b>+9</b>	<b>+20</b>

## UMH Limerick

Mar 2021 (Dec 2020 figure: 393)	WTE Feb 2021	WTE Mar 2021	WTE change since Feb 21	% change since Feb 21	WTE change since Dec 20
<b>Overall</b>	<b>408</b>	<b>403</b>	<b>-4</b>	<b>-1.1%</b>	<b>+10</b>
Consultants	15	15	+0	+0.0%	
Registrars	16	16	-0	-0.0%	-1
SHO/ Interns	12	13	+1	+0.1%	+0
<b>Medical &amp; Dental</b>	<b>43</b>	<b>44</b>	<b>+1</b>	<b>+1</b>	<b>-1</b>
Nurse/ Midwife Manager	44	43	-1	-0.0%	+1
Nurse/ Midwife Specialist & AN/MP	5	6	+0	+0.0%	+1
Staff Nurse/ Staff Midwife	178	178	-0	-0.0%	+4
Pre-registration Nurse/ Midwife Intern	10	10	0	+0.0%	+9
Post-registration Nurse/ Midwife Student	15	13	-2	-0.1%	+3
Nursing/ Midwifery Student	25	23	-2	-0.1%	+12
Nursing/ Midwifery other	4	4	-0	-0.0%	-0
<b>Nursing &amp; Midwifery</b>	<b>257</b>	<b>254</b>	<b>-3</b>	<b>-3</b>	<b>+18</b>
Therapy Professions	2	1	-1	-0.4%	-1
Health Science/ Diagnostics				-1.0%	-1
Social Workers	1	1	0	+0.0%	
<b>Health &amp; Social Care Professionals</b>	<b>3</b>	<b>2</b>	<b>-1</b>	<b>-1</b>	<b>-2</b>
Management (VIII & above)	1	1	0	+0.0%	
Administrative/ Supervisory (V to VII)	2	3	+1	+0.7%	+1
Clerical (III & IV)	38	36	-2	-0.0%	-2
<b>Management &amp; Administrative</b>	<b>41</b>	<b>40</b>	<b>-1</b>	<b>-1</b>	<b>-1</b>
Support	44	43	-1	-0.0%	-3
<b>General Support</b>	<b>44</b>	<b>43</b>	<b>-1</b>	<b>-1</b>	<b>-3</b>
Health Care Assistants	20	20	+0	+0.0%	-1
Care, other	0	0	0	+0.0%	
<b>Patient &amp; Client Care</b>	<b>20</b>	<b>20</b>	<b>+0</b>	<b>+0</b>	<b>-1</b>

## Hospital Group HQ

Mar 2021 (Dec 2020 figure: 10)	WTE Feb 2021	WTE Mar 2021	WTE change since Feb 21	% change since Feb 21	WTE change since Dec 20
<b>Overall</b>	<b>11</b>	<b>11</b>	<b>+0</b>	<b>+1.1%</b>	<b>+1</b>
Nurse/ Midwife Manager	1	1	0	+0.0%	
<b>Nursing &amp; Midwifery</b>	<b>1</b>	<b>1</b>			
Management (VIII & above)	7	7	+0	+0.0%	-0
Administrative/ Supervisory (V to VII)	3	3	+0	+0.0%	+1
<b>Management &amp; Administrative</b>	<b>10</b>	<b>10</b>	<b>+0</b>	<b>+0</b>	<b>+1</b>

**University of Limerick Hospital Group Employment by Grade Group & Staff Category: March 2021**

Mar 2021 (Dec 2020 figure: 4,506)	WTE Feb 2021	WTE Mar 2021	WTE change since Feb 21	% change since Feb 21	WTE change since Dec 20	WTE change since Mar 20
<b>Overall</b>	<b>4,614</b>	<b>4,689</b>	<b>+75</b>	<b>+1.6%</b>	<b>+183</b>	<b>+494</b>
Consultant Anaesthesia	25	25	+0	+0.1%	+0	+6
Consultant Emergency Medicine	8	8	-0	-0.9%	+0	-0
Consultant Medicine	55	55	-0	-0.3%	-0	+1
Consultant Obstetrics & Gynaecology	13	13	+0	+0.6%		-0
Consultant Paediatrics	13	14	+1	+4.6%	+1	+2
Consultant Pathology	13	13	+0	+0.1%	-0	+0
Consultant Radiology	15	15	+1	+4.3%	+0	+1
Consultant Surgery	40	42	+2	+4.0%	+1	+5
<b>Consultants</b>	<b>183</b>	<b>185</b>	<b>+3</b>	<b>+1.5%</b>	<b>+2</b>	<b>+15</b>
Registrar	136	137	+1	+0.7%	+5	+10
Senior Registrar	7	7	+0	+0.1%	+0	-1
Specialist Registrar	59	58	-1	-2.0%	-7	-1
<b>Registrars</b>	<b>202</b>	<b>202</b>	<b>-0</b>	<b>-0.1%</b>	<b>-2</b>	<b>+8</b>
Interns	101	101	+0	+0.2%		+46
Senior House Officer	150	151	+2	+1.1%	-7	+12
<b>SHO/ Interns</b>	<b>250</b>	<b>252</b>	<b>+2</b>	<b>+0.7%</b>	<b>-7</b>	<b>+58</b>
Other Medical	1	1	+0	+1.2%		
<b>Medical/ Dental, other</b>	<b>1</b>	<b>1</b>	<b>+0</b>	<b>+1.2%</b>		
<b>Medical &amp; Dental</b>	<b>636</b>	<b>640</b>	<b>+4</b>	<b>+0.7%</b>	<b>-7</b>	<b>+82</b>
Clinical Nurse/ Midwife Manager	306	303	-3	-0.9%	+4	+11
Director Nursing/Midwifery, Assistant	41	42	+1	+2.3%	+0	+6
Director of Nursing/Midwifery	6	6			+0	-1
<b>Nurse/ Midwife Manager</b>	<b>352</b>	<b>351</b>	<b>-2</b>	<b>-0.5%</b>	<b>+4</b>	<b>+16</b>
Advanced Nurse/ Midwife Practitioner	30	31	+1	+2.8%	+4	+9
Clinical Nurse/ Midwife Specialist	56	56	-0	-0.5%	+2	+2
<b>Nurse/ Midwife Specialist &amp; AN/MP</b>	<b>86</b>	<b>87</b>	<b>+1</b>	<b>+0.7%</b>	<b>+5</b>	<b>+11</b>
Staff Midwives	150	149	-1	-0.6%	-0	-2
Staff Nurses [General/ Children's]	1,164	1,208	+44	+3.7%	+57	+144
<b>Staff Nurse/ Staff Midwife</b>	<b>1,314</b>	<b>1,357</b>	<b>+43</b>	<b>+3.3%</b>	<b>+57</b>	<b>+142</b>
Pre-registration Nurse/ Midwife Intern	34	34	+0	+0.5%	+33	+1
Pre-registration Nurse Intern (COVID-19)				-100.0%	-1	
Post-registration Nurse/ Midwife Student	15	13	-2	-13.4%	+3	+0
<b>Nursing/ Midwifery Student</b>	<b>49</b>	<b>47</b>	<b>-2</b>	<b>-3.8%</b>	<b>+35</b>	<b>+2</b>
Nursing Education/Clinical	11	12	+0	+3.5%	+1	+0
<b>Nursing/ Midwifery other</b>	<b>11</b>	<b>12</b>	<b>+0</b>	<b>+3.5%</b>	<b>+1</b>	<b>+0</b>
<b>Nursing &amp; Midwifery</b>	<b>1,814</b>	<b>1,854</b>	<b>+40</b>	<b>+2.2%</b>	<b>+102</b>	<b>+171</b>
Dietitians	19	20	+0	+1.6%	+1	+2
Occupational Therapists	10	10	-0	-2.4%	-1	+3
Physiotherapists	55	58	+3	+5.9%	+3	+5
Podiatrists & Chiropodists	4	4	-0	-0.5%	+0	+1

Mar 2021 (Dec 2020 figure: 4,506)	WTE Feb 2021	WTE Mar 2021	WTE change since Feb 21	% change since Feb 21	WTE change since Dec 20	WTE change since Mar 20
<b>Overall</b>	<b>4,614</b>	<b>4,689</b>	<b>+75</b>	<b>+1.6%</b>	<b>+183</b>	<b>+494</b>
Speech & Language Therapists	11	11	+0	+0.2%	+1	+5
<b>Therapy Professions</b>	<b>99</b>	<b>102</b>	<b>+3</b>	<b>+3.3%</b>	<b>+5</b>	<b>+17</b>
Audiology	1		-1	-100.0%	-1	-1
Biochemists	7	7			-0	+1
Clinical Engineering	9	14	+4	+45.6%	+6	+6
Clinical Measurement	26	27	+1	+3.0%	+1	+0
Medical Science	126	123	-3	-2.5%	-2	-3
Phlebotomists				-100.0%		-1
Physicists	2	2	-0	-7.5%	-0	-0
Radiographers	83	83	-0	-0.0%	-1	+7
<b>Health Science/ Diagnostics</b>	<b>254</b>	<b>256</b>	<b>+1</b>	<b>+0.5%</b>	<b>+2</b>	<b>+9</b>
<b>Social Workers</b>	<b>12</b>	<b>14</b>	<b>+2</b>	<b>+13.5%</b>	<b>+3</b>	<b>+3</b>
<b>Psychologists</b>	<b>4</b>	<b>4</b>				<b>+1</b>
<b>Pharmacy</b>	<b>51</b>	<b>51</b>	<b>-0</b>	<b>-0.4%</b>	<b>-0</b>	<b>+7</b>
HSCP Trainees/ Students	8	8			+4	+1
Play Therapists/ Specialists	2	2	+0	+1.0%		
<b>H&amp;SC, Other</b>	<b>10</b>	<b>10</b>	<b>+0</b>	<b>+0.2%</b>	<b>+4</b>	<b>+1</b>
<b>Health &amp; Social Care Professionals</b>	<b>430</b>	<b>436</b>	<b>+6</b>	<b>+1.4%</b>	<b>+12</b>	<b>+37</b>
Executive Management	6	6	+0	+1.5%	-0	+2
Senior Management (VIII & GM)	30	28	-2	-6.1%	-3	-3
<b>Management (VIII &amp; above)</b>	<b>36</b>	<b>34</b>	<b>-2</b>	<b>-4.8%</b>	<b>-3</b>	<b>-1</b>
<b>Administrative/ Supervisory (V to VII)</b>	<b>133</b>	<b>147</b>	<b>+14</b>	<b>+10.8%</b>	<b>+18</b>	<b>+35</b>
<b>Clerical (III &amp; IV)</b>	<b>523</b>	<b>523</b>	<b>-0</b>	<b>-0.0%</b>	<b>+15</b>	<b>+28</b>
<b>Management &amp; Administrative</b>	<b>692</b>	<b>704</b>	<b>+12</b>	<b>+1.8%</b>	<b>+30</b>	<b>+63</b>
Catering	30	30	+0	+0.3%	+3	+8
Household Services	363	365	+2	+0.5%	+17	+60
Other Labs & Associated	27	26	-1	-2.5%	-1	-4
Other Support	35	36	+1	+2.4%	-1	-4
Portering	147	150	+2	+1.6%	+5	+24
<b>Support</b>	<b>603</b>	<b>607</b>	<b>+4</b>	<b>+0.7%</b>	<b>+23</b>	<b>+84</b>
<b>Maintenance/ Technical</b>	<b>37</b>	<b>38</b>	<b>+0</b>	<b>+0.9%</b>	<b>+0</b>	<b>-0</b>
<b>General Support</b>	<b>640</b>	<b>645</b>	<b>+5</b>	<b>+0.7%</b>	<b>+23</b>	<b>+84</b>
HCA, Nurse's Aide, etc.	387	394	+7	+1.7%	+22	+57
HCA (Student Nurse/Midwife COVID-19)	2	2	+0	+11.2%	-1	+2
Health & Social Care Assistants	8	8			+0	-1
<b>Health Care Assistants</b>	<b>397</b>	<b>404</b>	<b>+7</b>	<b>+1.7%</b>	<b>+20</b>	<b>+58</b>
<b>Care, other</b>	<b>6</b>	<b>7</b>	<b>+1</b>	<b>+21.3%</b>	<b>+1</b>	<b>-0</b>
<b>Patient &amp; Client Care</b>	<b>403</b>	<b>411</b>	<b>+8</b>	<b>+2.0%</b>	<b>+22</b>	<b>+58</b>

## Employment by WTE, Headcount, Gender, Full-Time /Part-Time etc.: Mar 2021

University of Limerick Hospital Group	WTE	Headcount	WTE: no.	% Male	% female	Male WTE: no.	Female WTE: no.	% Total Perm	% Male Perm	% Female Perm	% Total Full Time	% Total Part Time	% Male FT	% Female FT
<b>Overall</b>	<b>4,689</b>	<b>5,267</b>	<b>1.12</b>	<b>20.4%</b>	<b>79.6%</b>	<b>1.03</b>	<b>1.15</b>	<b>78.5%</b>	<b>66.0%</b>	<b>81.7%</b>	<b>76.8%</b>	<b>23.2%</b>	<b>95.5%</b>	<b>72.0%</b>
Consultant Anaesthesia	25	25	1.00	76.0%	24.0%	1.00	1.00	92.0%	92.0%	83.3%	100.0%	0.0%	100.0%	100.0%
Consultant Emergency Medicine	8	9	1.13	66.7%	33.3%	1.01	1.46	88.9%	88.9%	100.0%	77.8%	22.2%	100.0%	33.3%
Consultant Medicine	55	60	1.09	65.0%	35.0%	1.03	1.21	61.7%	61.7%	52.4%	86.7%	13.3%	94.9%	71.4%
Consultant Obstetrics & Gynaecology	13	14	1.08	42.9%	57.1%	1.09	1.07	71.4%	71.4%	87.5%	85.7%	14.3%	83.3%	87.5%
Consultant Paediatrics	14	15	1.09	60.0%	40.0%	1.09	1.09	80.0%	80.0%	100.0%	80.0%	20.0%	77.8%	83.3%
Consultant Pathology	13	14	1.05	35.7%	64.3%	1.00	1.07	85.7%	85.7%	88.9%	92.9%	7.1%	100.0%	88.9%
Consultant Radiology	15	17	1.11	64.7%	35.3%	1.00	1.37	94.1%	94.1%	100.0%	94.1%	5.9%	100.0%	83.3%
Consultant Surgery	42	44	1.05	90.9%	9.1%	1.04	1.14	63.6%	63.6%	75.0%	88.6%	11.4%	90.0%	75.0%
<b>Consultants</b>	<b>185</b>	<b>198</b>	<b>1.07</b>	<b>68.2%</b>	<b>31.8%</b>	<b>1.03</b>	<b>1.15</b>	<b>73.7%</b>	<b>71.9%</b>	<b>77.8%</b>	<b>88.9%</b>	<b>11.1%</b>	<b>93.3%</b>	<b>79.4%</b>
Registrar	137	143	1.05	60.8%	39.2%	1.04	1.06	2.1%	2.1%	1.8%	94.4%	5.6%	96.6%	91.1%
Senior Registrar	7	7	1.00	85.7%	14.3%	1.00	1.00	14.3%	14.3%	0.0%	100.0%	0.0%	100.0%	100.0%
Specialist Registrar	58	59	1.02	55.9%	44.1%	1.00	1.04	0.0%	0.0%	0.0%	94.9%	5.1%	93.9%	96.2%
<b>Registrars</b>	<b>202</b>	<b>209</b>	<b>1.04</b>	<b>60.3%</b>	<b>39.7%</b>	<b>1.02</b>	<b>1.05</b>	<b>1.9%</b>	<b>2.4%</b>	<b>1.2%</b>	<b>94.7%</b>	<b>5.3%</b>	<b>96.0%</b>	<b>92.8%</b>
Interns	101	101	1.00	45.5%	54.5%	1.00	1.00	0.0%	0.0%	0.0%	100.0%	0.0%	100.0%	100.0%
Senior House Officer	151	153	1.01	35.9%	64.1%	1.00	1.02	0.0%	0.0%	0.0%	100.0%	0.0%	100.0%	100.0%
<b>SHO/ Interns</b>	<b>252</b>	<b>254</b>	<b>1.01</b>	<b>39.8%</b>	<b>60.2%</b>	<b>1.00</b>	<b>1.01</b>	<b>0.0%</b>	<b>0.0%</b>	<b>0.0%</b>	<b>100.0%</b>	<b>0.0%</b>	<b>100.0%</b>	<b>100.0%</b>
Other Medical	1	2	2.47		100.0%		2.47	0.0%	0.0%	0.0%	0.0%	100.0%		0.0%
<b>Medical/ Dental, other</b>	<b>1</b>	<b>2</b>	<b>2.47</b>		<b>100.0%</b>		<b>2.47</b>	<b>0.0%</b>		<b>0.0%</b>	<b>0.0%</b>	<b>100.0%</b>		<b>0.0%</b>
<b>Medical &amp; Dental</b>	<b>640</b>	<b>663</b>	<b>1.04</b>	<b>54.6%</b>	<b>45.4%</b>	<b>1.02</b>	<b>1.05</b>	<b>22.6%</b>	<b>27.6%</b>	<b>16.6%</b>	<b>94.7%</b>	<b>5.3%</b>	<b>96.1%</b>	<b>93.0%</b>
Clinical Nurse/ Midwife Manager	303	337	1.11	3.9%	96.1%	1.00	1.12	97.3%	97.3%	97.2%	71.5%	28.5%	100.0%	70.4%
Director Nursing/Midwifery, Assistant	42	43	1.03	11.6%	88.4%	1.11	1.02	97.7%	97.7%	97.4%	95.3%	4.7%	80.0%	97.4%
Director of Nursing/Midwifery	6	6	1.00		100.0%		1.00	100.0%	100.0%	100.0%	100.0%	0.0%		100.0%
<b>Nurse/ Midwife Manager</b>	<b>351</b>	<b>386</b>	<b>1.10</b>	<b>4.7%</b>	<b>95.3%</b>	<b>1.03</b>	<b>1.10</b>	<b>97.4%</b>	<b>100.0%</b>	<b>97.3%</b>	<b>74.6%</b>	<b>25.4%</b>	<b>94.4%</b>	<b>73.6%</b>

Advanced Nurse/ Midwife Practitioner	31	31	1.01	3.2%	96.8%	1.00	1.01	100.0%	100.0%	100.0%	100.0%	0.0%	100.0%	100.0%
Clinical Nurse/ Midwife Specialist	56	64	1.14		100.0%		1.14	100.0%	100.0%	100.0%	65.6%	34.4%		65.6%
<b>Nurse/ Midwife Specialist &amp; AN/MP</b>	<b>87</b>	<b>95</b>	<b>1.09</b>	<b>1.1%</b>	<b>98.9%</b>	<b>1.00</b>	<b>1.09</b>	<b>100.0%</b>	<b>100.0%</b>	<b>100.0%</b>	<b>76.8%</b>	<b>23.2%</b>	<b>100.0%</b>	<b>76.6%</b>
Staff Midwives	149	174	1.16		100.0%		1.16	97.1%	97.1%	97.1%	63.2%	36.8%		63.2%
Staff Nurses [General/ Children's]	1,208	1,430	1.18	7.7%	92.3%	1.06	1.20	97.7%	97.7%	97.6%	67.1%	32.9%	96.4%	64.6%
<b>Staff Nurse/ Staff Midwife</b>	<b>1,357</b>	<b>1,604</b>	<b>1.18</b>	<b>6.9%</b>	<b>93.1%</b>	<b>1.06</b>	<b>1.19</b>	<b>97.6%</b>	<b>99.1%</b>	<b>97.5%</b>	<b>66.6%</b>	<b>33.4%</b>	<b>96.4%</b>	<b>64.5%</b>
Pre-registration Nurse/ Midwife Intern	34	67	1.97	1.5%	98.5%	2.00	1.97	1.5%	1.5%	1.5%	100.0%	0.0%	100.0%	100.0%
Post-registration Nurse/ Midwife Student	13	16	1.22		100.0%		1.22	31.3%	31.3%	31.3%	56.3%	43.8%		56.3%
<b>Nursing/ Midwifery Student</b>	<b>47</b>	<b>83</b>	<b>1.76</b>	<b>1.2%</b>	<b>98.8%</b>	<b>2.00</b>	<b>1.76</b>	<b>7.2%</b>	<b>0.0%</b>	<b>7.3%</b>	<b>91.6%</b>	<b>8.4%</b>	<b>100.0%</b>	<b>91.5%</b>
Nursing Education/Clinical	12	14	1.18		100.0%		1.18	100.0%	100.0%	100.0%	64.3%	35.7%		64.3%
<b>Nursing/ Midwifery other</b>	<b>12</b>	<b>14</b>	<b>1.18</b>		<b>100.0%</b>		<b>1.18</b>	<b>100.0%</b>		<b>100.0%</b>	<b>64.3%</b>	<b>35.7%</b>		<b>64.3%</b>
<b>Nursing &amp; Midwifery</b>	<b>1,854</b>	<b>2,182</b>	<b>1.18</b>	<b>6.0%</b>	<b>94.0%</b>	<b>1.06</b>	<b>1.19</b>	<b>94.3%</b>	<b>98.5%</b>	<b>94.0%</b>	<b>69.4%</b>	<b>30.6%</b>	<b>96.2%</b>	<b>67.7%</b>
Dietitians	20	22	1.12		100.0%		1.12	81.8%	81.8%	81.8%	72.7%	27.3%		72.7%
Occupational Therapists	10	11	1.11	9.1%	90.9%	1.00	1.12	54.5%	54.5%	60.0%	90.9%	9.1%	100.0%	90.0%
Physiotherapists	58	66	1.14	21.2%	78.8%	1.07	1.16	72.7%	72.7%	75.0%	75.8%	24.2%	78.6%	75.0%
Podiatrists & Chiropodists	4	5	1.17		100.0%		1.17	60.0%	60.0%	60.0%	60.0%	40.0%		60.0%
Speech & Language Therapists	11	12	1.11		100.0%		1.11	66.7%	66.7%	66.7%	75.0%	25.0%		75.0%
<b>Therapy Professions</b>	<b>102</b>	<b>116</b>	<b>1.13</b>	<b>12.9%</b>	<b>87.1%</b>	<b>1.06</b>	<b>1.14</b>	<b>71.6%</b>	<b>60.0%</b>	<b>73.3%</b>	<b>75.9%</b>	<b>24.1%</b>	<b>80.0%</b>	<b>75.2%</b>
Biochemists	7	7	1.03	42.9%	57.1%	1.00	1.05	100.0%	100.0%	100.0%	100.0%	0.0%	100.0%	100.0%
Clinical Engineering	14	14	1.02	71.4%	28.6%	1.01	1.07	42.9%	42.9%	25.0%	100.0%	0.0%	100.0%	100.0%
Clinical Measurement	27	30	1.11	13.3%	86.7%	1.00	1.13	86.7%	86.7%	88.5%	86.7%	13.3%	100.0%	84.6%
Medical Science	123	138	1.12	21.0%	79.0%	1.07	1.14	88.4%	88.4%	89.9%	83.3%	16.7%	89.7%	81.7%
Physicists	2	2	1.08		100.0%		1.08	100.0%	100.0%	100.0%	100.0%	0.0%		100.0%
Radiographers	83	91	1.09	16.5%	83.5%	1.00	1.11	90.1%	90.1%	89.5%	81.3%	18.7%	100.0%	77.6%
<b>Health Science/ Diagnostics</b>	<b>256</b>	<b>282</b>	<b>1.10</b>	<b>21.6%</b>	<b>78.4%</b>	<b>1.03</b>	<b>1.12</b>	<b>86.9%</b>	<b>80.3%</b>	<b>88.7%</b>	<b>84.4%</b>	<b>15.6%</b>	<b>95.1%</b>	<b>81.4%</b>
<b>Social Workers</b>	<b>14</b>	<b>15</b>	<b>1.08</b>	<b>20.0%</b>	<b>80.0%</b>	<b>1.00</b>	<b>1.10</b>	<b>66.7%</b>	<b>66.7%</b>	<b>66.7%</b>	<b>86.7%</b>	<b>13.3%</b>	<b>100.0%</b>	<b>83.3%</b>
<b>Psychologists</b>	<b>4</b>	<b>4</b>	<b>1.14</b>		<b>100.0%</b>		<b>1.14</b>	<b>100.0%</b>		<b>100.0%</b>	<b>75.0%</b>	<b>25.0%</b>		<b>75.0%</b>
<b>Pharmacy</b>	<b>51</b>	<b>62</b>	<b>1.22</b>	<b>4.8%</b>	<b>95.2%</b>	<b>1.00</b>	<b>1.24</b>	<b>79.0%</b>	<b>66.7%</b>	<b>79.7%</b>	<b>71.0%</b>	<b>29.0%</b>	<b>100.0%</b>	<b>69.5%</b>
HSCP Trainees/ Students	8	8	1.06	12.5%	87.5%	1.05	1.06	12.5%	12.5%	14.3%	87.5%	12.5%	100.0%	85.7%
Play Therapists/ Specialists	2	2	1.00		100.0%		1.00	100.0%	100.0%	100.0%	100.0%	0.0%		100.0%

<b>H&amp;SC, Other</b>	<b>10</b>	<b>10</b>	<b>1.05</b>	<b>10.0%</b>	<b>90.0%</b>	<b>1.05</b>	<b>1.05</b>	<b>30.0%</b>	<b>0.0%</b>	<b>33.3%</b>	<b>90.0%</b>	<b>10.0%</b>	<b>100.0%</b>	<b>88.9%</b>
<b>Health &amp; Social Care</b>	<b>436</b>	<b>489</b>	<b>1.12</b>	<b>17.0%</b>	<b>83.0%</b>	<b>1.04</b>	<b>1.14</b>	<b>80.6%</b>	<b>74.7%</b>	<b>81.8%</b>	<b>80.8%</b>	<b>19.2%</b>	<b>92.8%</b>	<b>78.3%</b>
Executive Management	6	6	1.00	33.3%	66.7%	1.00	1.00	100.0%	100.0%	100.0%	100.0%	0.0%	100.0%	100.0%
Senior Management (VIII & GM)	28	29	1.02	24.1%	75.9%	1.00	1.02	96.6%	96.6%	95.5%	100.0%	0.0%	100.0%	100.0%
<b>Management (VIII &amp; above)</b>	<b>34</b>	<b>35</b>	<b>1.02</b>	<b>25.7%</b>	<b>74.3%</b>	<b>1.00</b>	<b>1.02</b>	<b>97.1%</b>	<b>100.0%</b>	<b>96.2%</b>	<b>100.0%</b>	<b>0.0%</b>	<b>100.0%</b>	<b>100.0%</b>
<b>Administrative/ Supervisory (V to VII)</b>	<b>147</b>	<b>157</b>	<b>1.07</b>	<b>17.2%</b>	<b>82.8%</b>	<b>1.04</b>	<b>1.07</b>	<b>91.7%</b>	<b>81.5%</b>	<b>93.8%</b>	<b>83.4%</b>	<b>16.6%</b>	<b>100.0%</b>	<b>80.0%</b>
<b>Clerical (III &amp; IV)</b>	<b>523</b>	<b>577</b>	<b>1.10</b>	<b>8.0%</b>	<b>92.0%</b>	<b>1.05</b>	<b>1.11</b>	<b>62.6%</b>	<b>28.3%</b>	<b>65.5%</b>	<b>79.0%</b>	<b>21.0%</b>	<b>95.7%</b>	<b>77.6%</b>
<b>Management &amp; Administrative</b>	<b>704</b>	<b>769</b>	<b>1.09</b>	<b>10.7%</b>	<b>89.3%</b>	<b>1.04</b>	<b>1.10</b>	<b>70.1%</b>	<b>53.7%</b>	<b>72.1%</b>	<b>80.9%</b>	<b>19.1%</b>	<b>97.6%</b>	<b>78.9%</b>
Catering	30	32	1.06	25.0%	75.0%	1.00	1.08	100.0%	100.0%	100.0%	84.4%	15.6%	100.0%	79.2%
Household Services	365	410	1.12	26.6%	73.4%	1.04	1.16	94.9%	94.9%	95.3%	74.6%	25.4%	98.2%	66.1%
Other Labs & Associated	26	32	1.23	15.6%	84.4%	1.24	1.23	96.9%	96.9%	100.0%	56.3%	43.8%	80.0%	51.9%
Other Support	36	42	1.16	19.0%	81.0%	1.07	1.18	100.0%	100.0%	100.0%	52.4%	47.6%	87.5%	44.1%
Portering	150	153	1.02	89.5%	10.5%	1.02	1.07	93.5%	93.5%	93.8%	95.4%	4.6%	97.8%	75.0%
<b>Support</b>	<b>607</b>	<b>669</b>	<b>1.10</b>	<b>39.9%</b>	<b>60.1%</b>	<b>1.03</b>	<b>1.16</b>	<b>95.2%</b>	<b>93.6%</b>	<b>96.3%</b>	<b>77.6%</b>	<b>22.4%</b>	<b>97.4%</b>	<b>64.4%</b>
Maintenance	37	37	1.01	100.0%		1.01		97.3%	97.3%		97.3%	2.7%	97.3%	
Technical Services	1	1	1.00	100.0%		1.00		100.0%	100.0%		100.0%	0.0%	100.0%	
<b>Maintenance/ Technical</b>	<b>38</b>	<b>38</b>	<b>1.01</b>	<b>100.0%</b>		<b>1.01</b>		<b>97.4%</b>	<b>97.4%</b>	<b>#DIV/0</b>	<b>97.4%</b>	<b>2.6%</b>	<b>97.4%</b>	
<b>General Support</b>	<b>645</b>	<b>707</b>	<b>1.10</b>	<b>43.1%</b>	<b>56.9%</b>	<b>1.03</b>	<b>1.16</b>	<b>95.3%</b>	<b>94.1%</b>	<b>96.3%</b>	<b>78.6%</b>	<b>21.4%</b>	<b>97.4%</b>	<b>64.4%</b>
HCA, Nurse's Aide, etc.	394	436	1.11	24.8%	75.2%	1.05	1.13	70.0%	70.0%	67.1%	73.4%	26.6%	88.9%	68.3%
HCA (Student Nurse/Midwife COVID-19)	2	3	1.78		100.0%		1.78	0.0%	0.0%	0.0%	0.0%	100.0%		0.0%
Health & Social Care Assistants	8	10	1.19	10.0%	90.0%	1.00	1.21	90.0%	90.0%	88.9%	40.0%	60.0%	100.0%	33.3%
<b>Health Care Assistants</b>	<b>404</b>	<b>449</b>	<b>1.11</b>	<b>24.3%</b>	<b>75.7%</b>	<b>1.05</b>	<b>1.13</b>	<b>69.9%</b>	<b>78.9%</b>	<b>67.1%</b>	<b>72.2%</b>	<b>27.8%</b>	<b>89.0%</b>	<b>66.8%</b>
Other Care Grades	7	8	1.13	75.0%	25.0%	1.12	1.13	75.0%	75.0%	100.0%	75.0%	25.0%	66.7%	100.0%
<b>Care, other</b>	<b>7</b>	<b>8</b>	<b>1.13</b>	<b>75.0%</b>	<b>25.0%</b>	<b>1.12</b>	<b>1.13</b>	<b>75.0%</b>	<b>66.7%</b>	<b>100.0%</b>	<b>75.0%</b>	<b>25.0%</b>	<b>66.7%</b>	<b>100.0%</b>
<b>Patient &amp; Client Care</b>	<b>411</b>	<b>457</b>	<b>1.11</b>	<b>25.2%</b>	<b>74.8%</b>	<b>1.05</b>	<b>1.13</b>	<b>70.0%</b>	<b>78.3%</b>	<b>67.3%</b>	<b>72.2%</b>	<b>27.8%</b>	<b>87.8%</b>	<b>67.0%</b>

## Employment by WTE, Headcount, Gender, Full-Time /Part-Time etc.: Mar 2021

University of Limerick Hospital Group	WTE	Headcount	WTE: no.	% Male	% female	Male WTE: no.	Female WTE: no.	% Total Perm	% Male Perm	% Female Perm	% Total Full Time	% Total Part Time	% Male FT	% Female FT
<b>Overall</b>	<b>4,689</b>	<b>5,267</b>	<b>1.12</b>	<b>20.4%</b>	<b>79.6%</b>	<b>1.03</b>	<b>1.15</b>	<b>78.5%</b>	<b>66.0%</b>	<b>81.7%</b>	<b>76.8%</b>	<b>23.2%</b>	<b>95.5%</b>	<b>72.0%</b>
Croom Orthopaedic	197	226	1.15	24.8%	75.2%	1.02	1.20	86.3%	86.3%	93.5%	69.9%	30.1%	89.3%	89.3%
Ennis	233	264	1.13	14.4%	85.6%	1.06	1.15	86.0%	86.0%	87.6%	66.3%	33.7%	84.2%	84.2%
Nenagh	266	300	1.13	14.7%	85.3%	1.02	1.15	88.3%	88.3%	90.6%	67.0%	33.0%	100.0%	100.0%
St. John's Limerick	317	361	1.14	15.0%	85.0%	1.01	1.17	85.6%	85.6%	87.9%	65.9%	34.1%	98.1%	98.1%
UH Limerick	3,263	3,647	1.12	23.3%	76.7%	1.03	1.15	75.5%	75.5%	78.7%	80.1%	19.9%	96.1%	96.1%
UMH Limerick	403	458	1.14	7.0%	93.0%	1.06	1.14	81.9%	81.9%	83.3%	74.5%	25.5%	90.6%	90.6%
Hospital Group HQ	11	11	1.00	18.2%	81.8%	1.00	1.00	100.0%	100.0%	100.0%	100.0%	0.0%	100.0%	100.0%



# University of Limerick Hospital Group Employment by Grade Group & Staff Category: March 2021

Mar 2021 (Dec 2020 figure: 4,506)	WTE Dec 2017	WTE Dec 2018	WTE Dec 2019	WTE Dec 2020	WTE Dec 2020	WTE Feb 2021	WTE Mar 2021
<b>Overall</b>	<b>3,974</b>	<b>4,155</b>	<b>4,146</b>	<b>4,506</b>	<b>4,506</b>	<b>4,614</b>	<b>4,689</b>
Consultant Anaesthesia	4.2%	3.6%	3.3%	3.8%	3.8%	3.9%	3.9%
Consultant Emergency Medicine	1.3%	1.4%	1.3%	1.2%	1.2%	1.3%	1.2%
Consultant Medicine	9.8%	9.5%	9.6%	8.5%	8.5%	8.7%	8.6%
Consultant Obstetrics & Gynaecology	1.9%	2.6%	2.4%	2.0%	2.0%	2.0%	2.0%
Consultant Paediatrics	2.4%	2.3%	2.0%	2.0%	2.0%	2.1%	2.1%
Consultant Pathology	2.2%	2.5%	2.4%	2.1%	2.1%	2.1%	2.1%
Consultant Radiology	2.8%	2.9%	2.7%	2.3%	2.3%	2.3%	2.4%
Consultant Surgery	5.7%	5.9%	6.1%	6.3%	6.3%	6.3%	6.5%
<b>Consultants</b>	<b>30.1%</b>	<b>30.6%</b>	<b>29.9%</b>	<b>28.4%</b>	<b>28.4%</b>	<b>29.0%</b>	<b>29.0%</b>
Registrar	23.0%	24.4%	22.9%	20.4%	20.4%	21.4%	21.4%
Senior Registrar	0.6%	0.4%	0.8%	1.1%	1.1%	1.1%	1.1%
Specialist Registrar	8.9%	9.7%	10.7%	10.0%	10.0%	9.3%	9.1%
<b>Registrars</b>	<b>32.5%</b>	<b>34.5%</b>	<b>34.4%</b>	<b>31.5%</b>	<b>31.5%</b>	<b>31.5%</b>	<b>31.5%</b>
Interns	10.7%	10.7%	10.1%	15.6%	15.6%	15.9%	15.8%
Senior House Officer	26.5%	24.0%	25.5%	24.4%	24.4%	23.5%	23.6%
<b>SHO/ Interns</b>	<b>37.2%</b>	<b>34.7%</b>	<b>35.6%</b>	<b>40.0%</b>	<b>40.0%</b>	<b>39.4%</b>	<b>39.4%</b>
Other Medical	0.2%	0.2%	0.1%	0.1%	0.1%	0.1%	0.1%
<b>Medical/ Dental, other</b>	<b>0.2%</b>	<b>0.2%</b>	<b>0.1%</b>	<b>0.1%</b>	<b>0.1%</b>	<b>0.1%</b>	<b>0.1%</b>
<b>Medical &amp; Dental</b>	<b>12.7%</b>	<b>12.6%</b>	<b>13.3%</b>	<b>14.4%</b>	<b>14.4%</b>	<b>13.7%</b>	<b>13.7%</b>
Clinical Nurse/ Midwife Manager	17.9%	17.3%	16.9%	17.1%	17.1%	16.8%	16.3%
Director Nursing/Midwifery, Assistant	2.2%	2.1%	2.3%	2.4%	2.4%	2.3%	2.3%
Director of Nursing/Midwifery	0.4%	0.4%	0.4%	0.3%	0.3%	0.3%	0.3%
<b>Nurse/ Midwife Manager</b>	<b>20.5%</b>	<b>19.8%</b>	<b>19.6%</b>	<b>19.8%</b>	<b>19.8%</b>	<b>18.9%</b>	<b>18.9%</b>
Advanced Nurse/ Midwife Practitioner	0.4%	1.0%	1.3%	1.5%	1.5%	1.7%	1.7%
Clinical Nurse/ Midwife Specialist	3.2%	3.2%	3.3%	3.1%	3.1%	3.1%	3.0%
<b>Nurse/ Midwife Specialist &amp; AN/MP</b>	<b>3.6%</b>	<b>4.2%</b>	<b>4.6%</b>	<b>4.7%</b>	<b>4.7%</b>	<b>4.7%</b>	<b>4.7%</b>
Staff Midwives	9.3%	8.5%	8.7%	8.5%	8.5%	8.3%	8.1%
Staff Nurses [General/ Children's]	65.5%	66.1%	65.2%	65.7%	65.7%	64.2%	65.1%
<b>Staff Nurse/ Staff Midwife</b>	<b>74.8%</b>	<b>74.5%</b>	<b>74.0%</b>	<b>74.2%</b>	<b>74.2%</b>	<b>73.2%</b>	<b>73.2%</b>
Pre-registration Nurse/ Midwife Intern	0.0%	0.1%	0.2%	0.1%	0.1%	1.9%	1.8%
Pre-registration Nurse Intern (COVID-19)				0.1%	0.1%		
Post-registration Nurse/ Midwife Student	0.3%	0.6%	1.0%	0.6%	0.6%	0.8%	0.7%
<b>Nursing/ Midwifery Student</b>	<b>0.4%</b>	<b>0.7%</b>	<b>1.1%</b>	<b>0.7%</b>	<b>0.7%</b>	<b>2.5%</b>	<b>2.5%</b>
Nursing Education/Clinical	0.7%	0.7%	0.7%	0.6%	0.6%	0.6%	0.6%
<b>Nursing/ Midwifery other</b>	<b>0.7%</b>	<b>0.7%</b>	<b>0.7%</b>	<b>0.6%</b>	<b>0.6%</b>	<b>0.6%</b>	<b>0.6%</b>
<b>Nursing &amp; Midwifery</b>	<b>39.2%</b>	<b>40.0%</b>	<b>40.0%</b>	<b>38.9%</b>	<b>38.9%</b>	<b>39.5%</b>	<b>39.5%</b>
Dietitians	4.4%	4.4%	4.3%	4.4%	4.4%	4.5%	4.5%
Occupational Therapists	1.2%	1.4%	1.9%	2.5%	2.5%	2.4%	2.3%
Orthoptists	0.3%						
Physiotherapists	13.1%	13.5%	12.9%	13.0%	13.0%	12.7%	13.3%
Podiatrists & Chiropodists	0.4%	0.7%	0.7%	0.9%	0.9%	1.0%	1.0%
Speech & Language Therapists	1.2%	1.4%	1.1%	2.2%	2.2%	2.5%	2.5%
<b>Therapy Professions</b>	<b>20.5%</b>	<b>21.4%</b>	<b>20.9%</b>	<b>23.1%</b>	<b>23.1%</b>	<b>23.5%</b>	<b>23.5%</b>
Audiology	0.3%	0.2%	0.2%	0.2%	0.2%	0.1%	
Biochemists	0.5%	1.4%	1.7%	1.6%	1.6%	1.6%	1.6%
Clinical Engineering	1.5%	1.7%	1.5%	1.9%	1.9%	2.2%	3.1%
Clinical Measurement	7.2%	6.8%	6.5%	6.2%	6.2%	6.1%	6.2%
Medical Science	34.7%	31.7%	32.1%	29.6%	29.6%	29.4%	28.3%
Phlebotomists	0.5%	0.2%	0.2%				
Physicists		0.5%	0.5%	0.5%	0.5%	0.5%	0.4%
Radiographers	18.8%	19.3%	20.0%	19.9%	19.9%	19.4%	19.1%

Mar 2021 (Dec 2020 figure: 4,506)	WTE Dec 2017	WTE Dec 2018	WTE Dec 2019	WTE Dec 2020	WTE Dec 2020	WTE Feb 2021	WTE Mar 2021
<b>Overall</b>	<b>3,974</b>	<b>4,155</b>	<b>4,146</b>	<b>4,506</b>	<b>4,506</b>	<b>4,614</b>	<b>4,689</b>
<b>Health Science/ Diagnostics</b>	<b>63.4%</b>	<b>61.9%</b>	<b>62.6%</b>	<b>60.0%</b>	<b>60.0%</b>	<b>58.7%</b>	<b>58.7%</b>
<b>Social Workers</b>	<b>2.1%</b>	<b>2.0%</b>	<b>2.8%</b>	<b>2.6%</b>	<b>2.6%</b>	<b>3.2%</b>	<b>3.2%</b>
<b>Psychologists</b>	<b>0.5%</b>	<b>0.5%</b>	<b>0.7%</b>	<b>0.8%</b>	<b>0.8%</b>	<b>0.8%</b>	<b>0.8%</b>
<b>Pharmacy</b>	<b>11.2%</b>	<b>11.7%</b>	<b>11.1%</b>	<b>12.0%</b>	<b>12.0%</b>	<b>11.6%</b>	<b>11.6%</b>
HSCP Trainees/ Students	1.8%	2.0%	1.3%	0.9%	0.9%	1.8%	1.7%
Play Therapists/ Specialists	0.5%	0.5%	0.5%	0.5%	0.5%	0.5%	0.5%
<b>H&amp;SC, Other</b>	<b>2.3%</b>	<b>2.4%</b>	<b>1.8%</b>	<b>1.4%</b>	<b>1.4%</b>	<b>2.2%</b>	<b>2.2%</b>
<b>Health &amp; Social Care Professionals</b>	<b>9.8%</b>	<b>9.7%</b>	<b>9.7%</b>	<b>9.4%</b>	<b>9.4%</b>	<b>9.3%</b>	<b>9.3%</b>
Executive Management	0.5%	0.6%	0.8%	0.9%	0.9%	0.9%	0.9%
Senior Management (VIII & GM)	4.9%	4.6%	4.9%	4.6%	4.6%	4.4%	4.0%
<b>Management (VIII &amp; above)</b>	<b>5.4%</b>	<b>5.2%</b>	<b>5.7%</b>	<b>5.5%</b>	<b>5.5%</b>	<b>4.9%</b>	<b>4.9%</b>
<b>Administrative/ Supervisory (V to VII)</b>	<b>15.5%</b>	<b>15.7%</b>	<b>16.5%</b>	<b>19.1%</b>	<b>19.1%</b>	<b>20.9%</b>	<b>20.9%</b>
General Administrative (III & IV)	79.1%	79.1%	77.8%	75.3%	75.3%	75.6%	74.2%
<b>Clerical (III &amp; IV)</b>	<b>79.1%</b>	<b>79.1%</b>	<b>77.8%</b>	<b>75.3%</b>	<b>75.3%</b>	<b>74.2%</b>	<b>74.2%</b>
<b>Management &amp; Administrative</b>	<b>16.2%</b>	<b>15.8%</b>	<b>15.0%</b>	<b>15.0%</b>	<b>15.0%</b>	<b>15.0%</b>	<b>15.0%</b>
Catering	7.9%	7.0%	7.7%	4.3%	4.3%	4.7%	4.7%
Household Services	19.4%	19.6%	21.0%	56.0%	56.0%	56.7%	56.6%
Other Labs & Associated	9.5%	10.4%	9.5%	4.4%	4.4%	4.2%	4.0%
Other Support	11.0%	11.5%	12.2%	5.9%	5.9%	5.5%	5.6%
Portering	41.4%	39.8%	37.7%	23.4%	23.4%	23.0%	23.2%
<b>Support</b>	<b>89.2%</b>	<b>88.2%</b>	<b>88.1%</b>	<b>94.0%</b>	<b>94.0%</b>	<b>94.2%</b>	<b>94.2%</b>
Maintenance	10.5%	11.4%	11.5%	5.9%	5.9%	5.7%	5.7%
Technical Services	0.3%	0.3%	0.3%	0.2%	0.2%	0.2%	0.2%
<b>Maintenance/ Technical</b>	<b>10.8%</b>	<b>11.8%</b>	<b>11.9%</b>	<b>6.0%</b>	<b>6.0%</b>	<b>5.8%</b>	<b>5.8%</b>
<b>General Support</b>	<b>8.3%</b>	<b>7.9%</b>	<b>7.8%</b>	<b>13.8%</b>	<b>13.8%</b>	<b>13.7%</b>	<b>13.7%</b>
HCA, Nurse's Aide, etc.	97.3%	97.2%	97.1%	95.5%	95.5%	96.1%	95.8%
HCA (Student Nurse/Midwife COVID-19)				0.8%	0.8%	0.4%	0.4%
Health & Social Care Assistants	1.5%	1.5%	1.5%	2.2%	2.2%	2.1%	2.0%
<b>Health Care Assistants</b>	<b>98.8%</b>	<b>98.7%</b>	<b>98.7%</b>	<b>98.5%</b>	<b>98.5%</b>	<b>98.3%</b>	<b>98.3%</b>
Other Care Grades	1.2%	1.3%	1.3%	1.5%	1.5%	1.5%	1.7%
<b>Care, other</b>	<b>1.2%</b>	<b>1.3%</b>	<b>1.3%</b>	<b>1.5%</b>	<b>1.5%</b>	<b>1.7%</b>	<b>1.7%</b>
<b>Patient &amp; Client Care</b>	<b>13.8%</b>	<b>14.0%</b>	<b>14.1%</b>	<b>8.6%</b>	<b>8.6%</b>	<b>8.8%</b>	<b>8.8%</b>
<b>Total</b>	<b>100%</b>	<b>100%</b>	<b>100%</b>	<b>100%</b>	<b>100%</b>	<b>100%</b>	<b>100%</b>

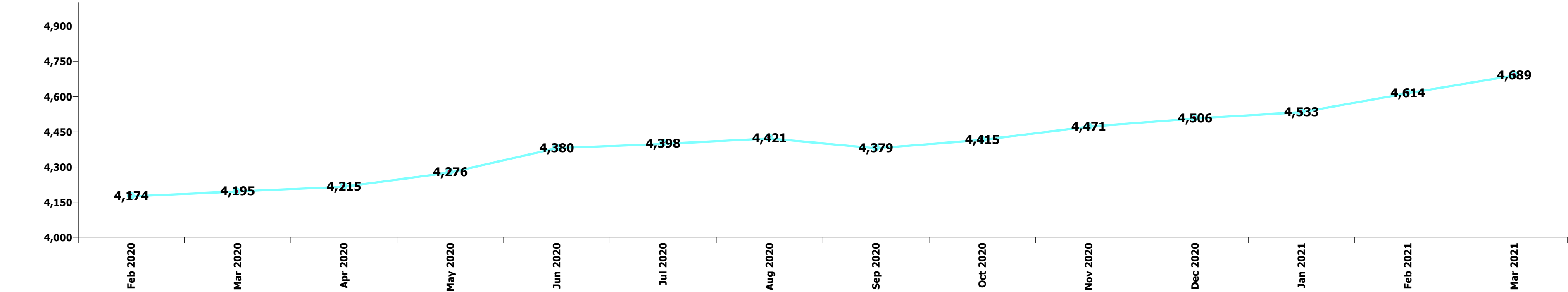
Summary Staff Movement: March 2021

Month-on-month Summary

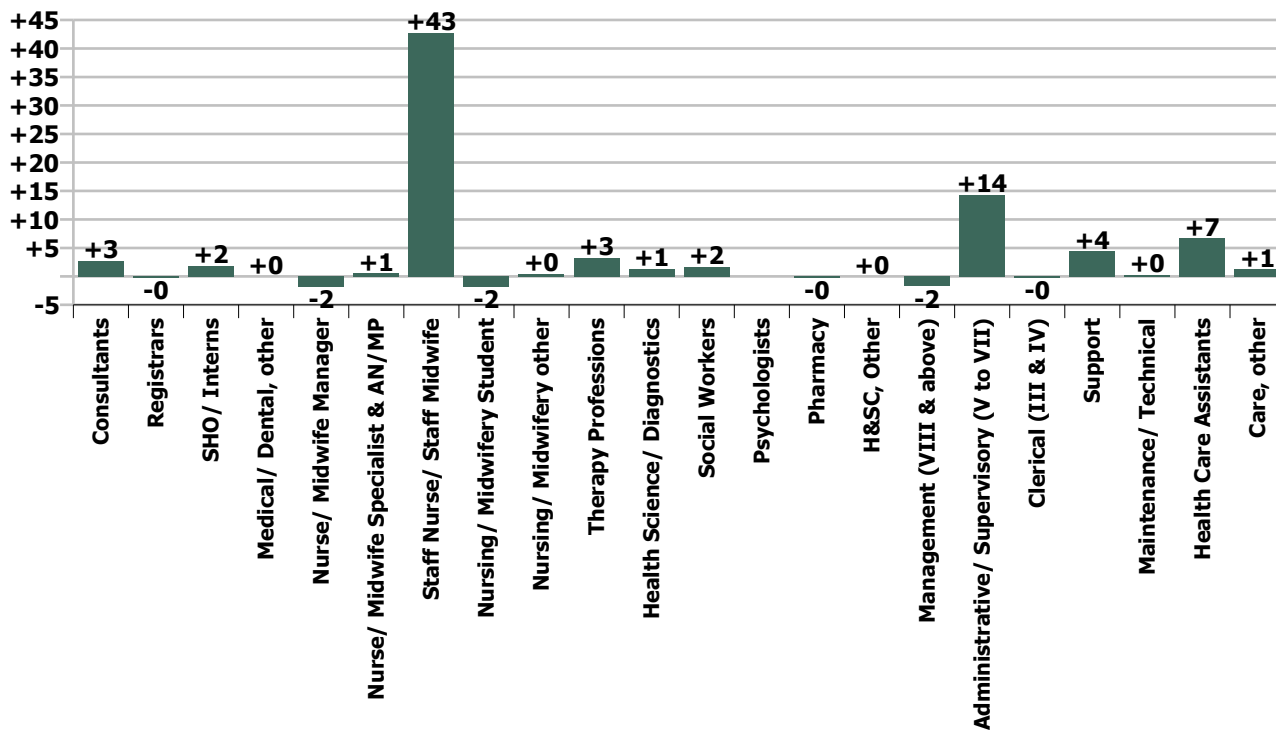
WTE change since Feb 21	% change since Feb 21	overall	Consultants	Registrars	SHO/ Interns	Medical/ Dental, other	Medical & Dental	Nurse/ Midwife Manager	Nurse/ Midwife Specialist & AN/MP	Staff Nurse/ Staff Midwife	Nursing/ Midwifery Student	Nursing/ Midwifery other	Nursing & Midwifery	Therapy Professions	Health Science/ Diagnostics	Social Workers	Psychologists	Pharmacy	H&SC, Other	Health & Social Care Professionals	Management (VIII & above)	Administrativ e/ Supervisory (V to VII)	Clerical (III & IV)	Management & Administrativ e	General Support	Health Care Assistants	Care, other	Patient & Client Care	
Overall	+1.6%	+75	+3	-0	+2	+0	+4	-2	+1	+43	-2	+0	+40	+3	+1	+2			-0	+0	+6	-2	+14	-0	+12	+5	+7	+1	+8
Croom Orthopaedic	+5.2%	+10	+1	+0	+1		+1	+0	+1	+6			+7	-0						-0		+1	+0	+1	+1	-0		-0	
Ennis	+1.6%	+4		+1	-1		+0	+0	+0	+1			+1		+1						+1		+1	+0	+1	-1		-1	
Nenagh	+1.5%	+4		-0	-1		-1	-1	+0	+2			+2	+1							+1		+1	-0	+1	+2	-0	-0	
St. John's Limerick	+1.1%	+3						+1		+3			+4	+0					+0		+0		-1		-1	-0			
UH Limerick	+1.8%	+59	+2	-1	+2	+0	+3	-1	-0	+30	+0	+0	+29	+3	+0	+2			-0	+0	+4	-2	+11	+1	+11	+3	+8	+1	+9
UMH Limerick	-1.1%	-4	+0	-0	+1		+1	-1	+0	-0	-2	-0	-3	-1							-1		+1	-2	-1	-1	+0		+0
Hospital Group HQ	+1.1%	+0																			+0	+0		+0					
			+1.5%	-0.1%	+0.7%	+1.2%	+0.7%	-0.5%	+0.7%	+3.3%	-3.8%	+3.5%	+2.2%	+3.3%	+0.5%	+13.5%			-0.4%	+0.2%	+1.4%	-4.8%	+10.8%	-0.0%	+1.8%	+0.7%	+1.7%	+21.3%	+2.0%

Year-on-year Summary

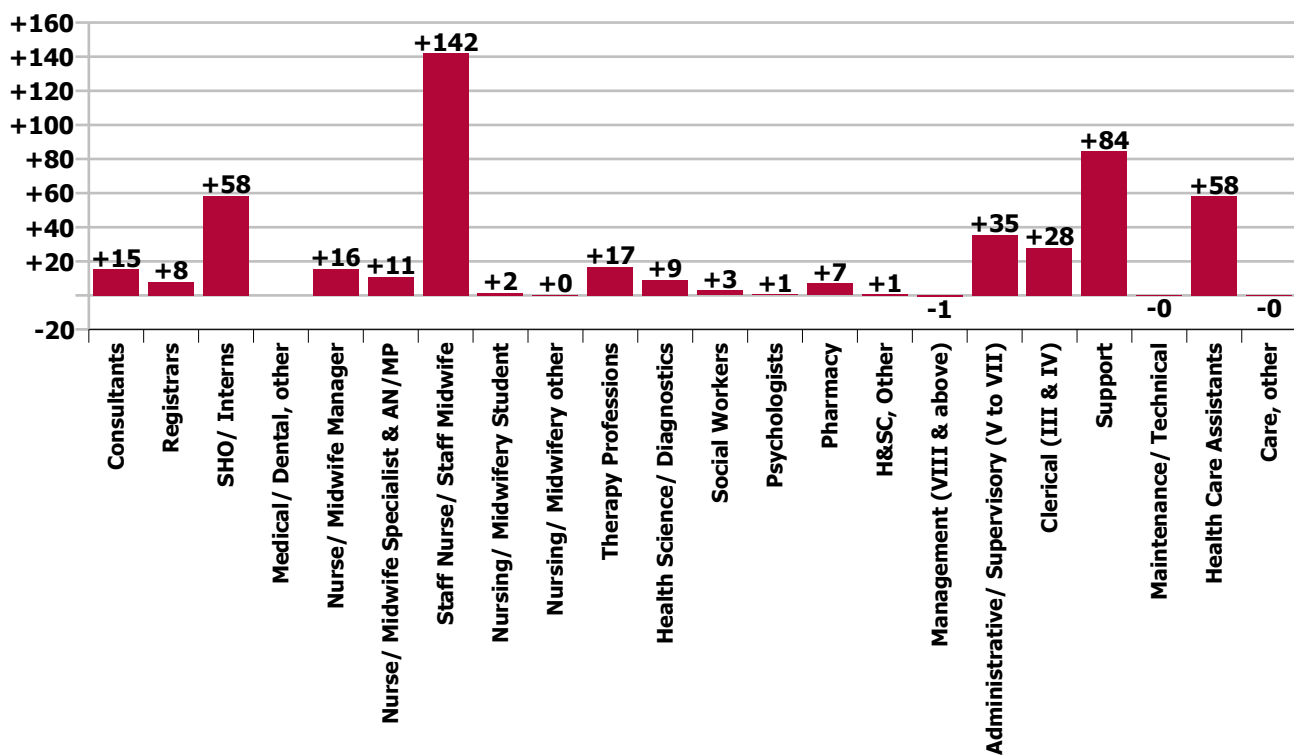
WTE change since Mar 20	% change since Mar 20	overall	Consultants	Registrars	SHO/ Interns	Medical/ Dental, other	Medical & Dental	Nurse/ Midwife Manager	Nurse/ Midwife Specialist & AN/MP	Staff Nurse/ Staff Midwife	Nursing/ Midwifery Student	Nursing/ Midwifery other	Nursing & Midwifery	Therapy Professions	Health Science/ Diagnostics	Social Workers	Psychologists	Pharmacy	H&SC, Other	Health & Social Care Professionals	Management (VIII & above)	Administrative/ Supervisory (V to VII)	Clerical (III & IV)	Management & Administrative	General Support	Health Care Assistants	Care, other	Patient & Client Care
Overall	+11.8%	+494	+15	+8	+58		+82	+16	+11	+142	+2	+0	+171	+17	+9	+3	+1	+7	+1	+37	-1	+35	+28	+63	+84	+58	-0	+58
Croom Orthopaedic	+23.0%	+37	+3	+1	+9		+13		+1	+9			+9	+2	-0					+2		+1	-1	-0	+12	+1		+1
Ennis	+0.6%	+1	-1	+4	-1		+3	-5	+2	+0			-3	+0	-1					-1		+1	-1	-0	+0	+2		+2
Nenagh	+7.7%	+19		-0	+4		+3	+0	+1	+4			+5	-0	+0			+0		+0		-0	+6	+4	+0		+0	
St. John's Limerick	+2.3%	+7		-3	-1		-4	+2	+1	-0		-1	+2	+1	+2			+1		+4	-1	+4	-3		+1	+4		+4
UH Limerick	+14.6%	+416	+13	+5	+51		+70	+10	+5	+126	+3	+1	+144	+15	+9	+3	+1	+5	+1	+33	-4	+27	+28	+51	+69	+49	+0	+49
UMH Limerick	+2.2%	+9	-0	+1	-4		-4	+9	+2	+3	-1	+1	+13	-1	-1					-2	+1	+1	-1	+1	-2	+2	-1	+2
Hospital Group HQ	+83.8%	+5																			+3	+2		+5				
			+9.0%	+4.2%	+30.2%		+14.7%	+4.7%	+14.3%	+11.7%	+3.3%	+3.8%	+10.1%	+19.7%	+3.7%	+25.9%	+16.7%	+16.0%	+7.3%	+9.3%	-2.1%	+31.8%	+5.6%	+9.8%	+15.0%	+16.8%	-5.1%	+16.4%



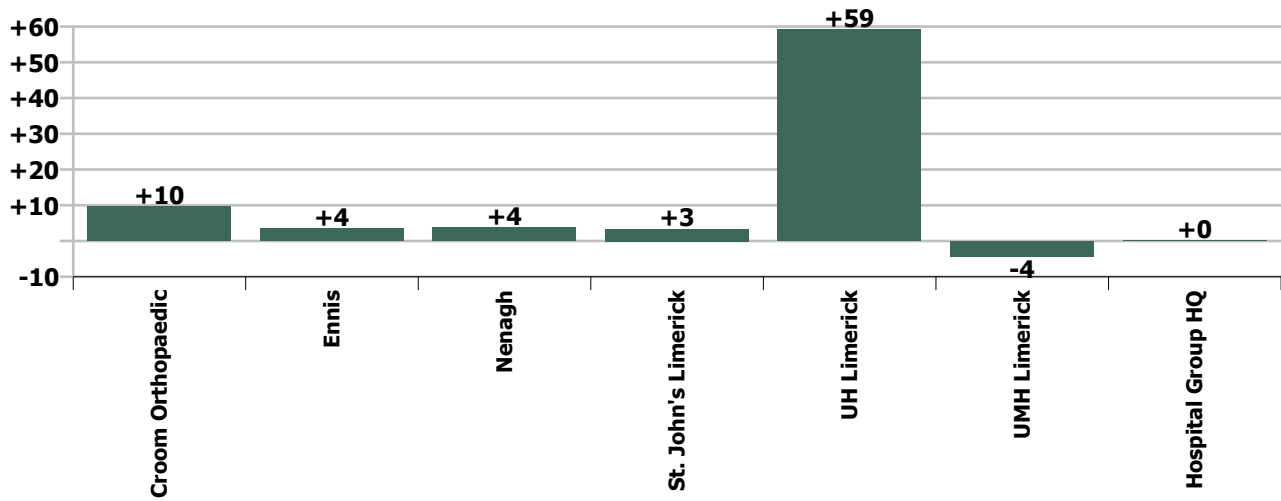
Staff Group change since: Feb 2021



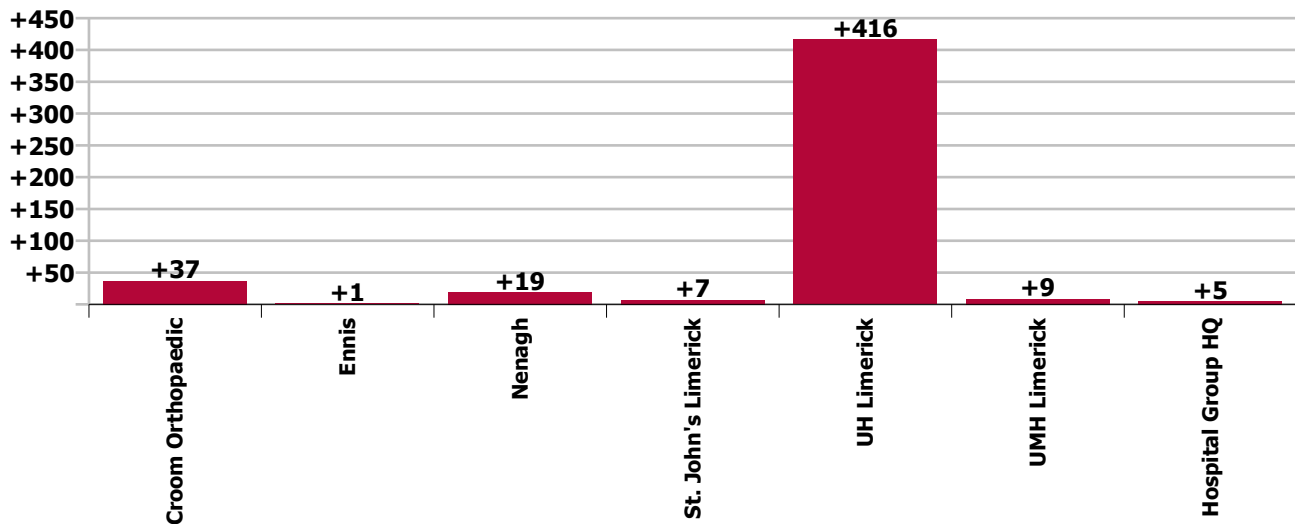
Staff Group change since: Mar 2020



### Hospital change since: Feb 2021



### Hospital change since: Mar 2020



## Longitudinal Employment Levels by Grade Group - Dec 2017 to Mar 2021

Mar 2021 (Dec 2017 figure: 3,974)	WTE Mar 2021	WTE change since Dec 17	WTE change since Dec 18	WTE change since Dec 20	WTE change since Dec 20	WTE change since Feb 21	% change since Dec 17	% change since Dec 18	% change since Dec 19	% change since Dec 20	% change since Feb 21
<b>Overall</b>	<b>4,689</b>	<b>+715</b>	<b>+535</b>	<b>+183</b>	<b>+183</b>	<b>+75</b>	<b>+18.0%</b>	<b>+12.9%</b>	<b>+13.1%</b>	<b>+4.1%</b>	<b>+1.6%</b>
<b>Consultant Anaesthesia</b>	<b>25</b>	<b>+4</b>	<b>+6</b>	<b>+0</b>	<b>+0</b>	<b>+0</b>	<b>+19.0%</b>	<b>+31.6%</b>	<b>+38.9%</b>	<b>+1.1%</b>	<b>+0.1%</b>
Consultant in Emergency Medicine	8	+2	+1	+0	+0	-0	+26.6%	+9.3%	+9.3%	+0.6%	-0.9%
<b>Consultant Emergency Medicine</b>	<b>8</b>	<b>+2</b>	<b>+1</b>	<b>+0</b>	<b>+0</b>	<b>-0</b>	<b>+26.6%</b>	<b>+9.3%</b>	<b>+9.3%</b>	<b>+0.6%</b>	<b>-0.9%</b>
Consultant Cardiologist	4		+1					+31.3%			
Consultant Dermatologist	3	-1	-1				-25.0%	-25.0%	-25.0%		
Consultant General Physician	29	+5	+5	+0	+0	-0	+22.6%	+20.9%	+9.6%	+1.1%	-0.5%
Consultant in Clinical Genetics		-0	-0				-100.0%	-100.0%	-100.0%	-100.0%	-100.0%
Consultant in Palliative Medicine	5	+1	+1	-0	-0	-0	+24.8%	+24.8%	+24.8%	-0.2%	-0.2%
Consultant Medical Oncologist	5	+3	+1	-0	-0		+125.0%	+12.8%	+12.5%	-9.6%	
Consultant Nephrologist & General Physician	1	-1	-1				-50.0%	-50.0%	-50.0%		
Consultant Neurologist	2										
Consultant Physician in Geriatric Medicine	4	-1					-20.0%				
Consultant Respiratory & General Physician	1										
Consultant Rheumatologist & General Physician	1								+4.2%		
<b>Consultant Medicine</b>	<b>55</b>	<b>+6</b>	<b>+5</b>	<b>-0</b>	<b>-0</b>	<b>-0</b>	<b>+11.4%</b>	<b>+10.7%</b>	<b>+4.0%</b>	<b>-0.3%</b>	<b>-0.3%</b>
Consultant Obstetrician & Gynaecologist	13	+4	-1			+0	+36.8%	-3.7%	-3.7%		+0.6%
<b>Consultant Obstetrics &amp; Gynaecology</b>	<b>13</b>	<b>+4</b>	<b>-1</b>			<b>+0</b>	<b>+36.8%</b>	<b>-3.7%</b>	<b>-3.7%</b>		<b>+0.6%</b>
Consultant Neonatologist	3	-1	-1				-25.0%	-25.0%			
Consultant Paediatrician	10	+3	+3	+1	+1	+1	+39.1%	+39.1%	+34.3%	+5.4%	+6.6%
Consultant Paediatrician s.i. respiratory medicine	1										
<b>Consultant Paediatrics</b>	<b>14</b>	<b>+2</b>	<b>+2</b>	<b>+1</b>	<b>+1</b>	<b>+1</b>	<b>+14.5%</b>	<b>+14.5%</b>	<b>+22.1%</b>	<b>+3.8%</b>	<b>+4.6%</b>
Consultant Clinical Biochemist	1										
Consultant Haematologist (Clinical & Laboratory)	5	+1	+0	-0	-0	+0	+35.1%	+7.8%	-1.1%	-0.2%	+0.2%
Consultant Histopathologist	4										
Consultant Microbiologist	3	+1					+50.0%				
<b>Consultant Pathology</b>	<b>13</b>	<b>+2</b>	<b>+0</b>	<b>-0</b>	<b>-0</b>	<b>+0</b>	<b>+21.8%</b>	<b>+3.0%</b>	<b>-0.4%</b>	<b>-0.1%</b>	<b>+0.1%</b>
Consultant Radiologist	15	+1	+0	+0	+0	+1	+9.9%	+2.5%	+3.2%	+2.5%	+4.3%
<b>Consultant Radiology</b>	<b>15</b>	<b>+1</b>	<b>+0</b>	<b>+0</b>	<b>+0</b>	<b>+1</b>	<b>+9.9%</b>	<b>+2.5%</b>	<b>+3.2%</b>	<b>+2.5%</b>	<b>+4.3%</b>
Consultant General Surgeon	15	+6	+4	+1	+1	+1	+55.4%	+35.8%	+29.0%	+6.8%	+5.0%
Consultant General Surgeon Breast	4	+2	+1				+101.7%	+45.6%			
Consultant General Surgeon s.i. vascular surgery	3	+1	+1				+50.0%	+50.0%	+50.0%		
Consultant Ophthalmic Surgeon	4	+1	+0				+33.8%	+0.3%	+0.5%		
Consultant Oral & Maxillo Facial Surgeon	1										

Mar 2021 (Dec 2017 figure: 3,974)	WTE Mar 2021	WTE change since Dec 17	WTE change since Dec 18	WTE change since Dec 20	WTE change since Dec 20	WTE change since Feb 21	% change since Dec 17	% change since Dec 18	% change since Dec 19	% change since Dec 20	% change since Feb 21
<b>Overall</b>	<b>4,689</b>	<b>+715</b>	<b>+535</b>	<b>+183</b>	<b>+183</b>	<b>+75</b>	<b>+18.0%</b>	<b>+12.9%</b>	<b>+13.1%</b>	<b>+4.1%</b>	<b>+1.6%</b>
Consultant Oral Surgeon	1										
Consultant Orthopaedic Surgeon	8	+4	+5	+1	+1	+1	+90.0%	+153.3%	+94.4%	+15.2%	+11.3%
Consultant Otolaryngologist	4			-1	-1					-20.0%	
Consultant Urologist	2	+0	+0	-0	-0	+0	+10.5%	+10.5%	-8.3%	-8.3%	+4.7%
<b>Consultant Surgery</b>	<b>42</b>	<b>+13</b>	<b>+11</b>	<b>+1</b>	<b>+1</b>	<b>+2</b>	<b>+45.7%</b>	<b>+35.7%</b>	<b>+23.6%</b>	<b>+1.9%</b>	<b>+4.0%</b>
<b>Consultants</b>	<b>185</b>	<b>+33</b>	<b>+20</b>	<b>+20</b>	<b>+2</b>	<b>+3</b>	<b>+22.0%</b>		<b>+12.2%</b>	<b>+1.0%</b>	<b>+1.5%</b>
Registrar	114	+6	+7	+6	+6	+1	+5.9%	+6.2%	+12.6%	+5.7%	+0.8%
Registrar, Anaesthesia	1	+1		-2	-2		-100.0%			-60.0%	
Registrar, Emergency Medicine	6	+6	-1	+1	+1	+0	-100.0%	-8.4%	-41.7%	+18.5%	+0.2%
Registrar, General Practice	1	+1	+1				-100.0%	-100.0%	-100.0%		
Registrar, Medicine	6			-1	-1					-14.3%	
Registrar, Obstetrics & Gynaecology	6	+4	+1	-1	-1		+200.0%	+20.0%	+20.2%	-14.3%	
Registrar, Ophthalmology	1	+1					-100.0%				
Registrar, Psychiatry	1	+1	+1	+1	+1		-100.0%	-100.0%		-100.0%	
<b>Registrar</b>	<b>137</b>	<b>+21</b>	<b>+9</b>	<b>+5</b>	<b>+5</b>	<b>+1</b>	<b>+17.9%</b>	<b>+7.1%</b>	<b>+8.1%</b>	<b>+3.6%</b>	<b>+0.7%</b>
Registrar, Senior	7	+4	+5	+0	+0	+0	+133.3%	+250.0%	+55.6%	+1.3%	+0.1%
<b>Senior Registrar</b>	<b>7</b>	<b>+4</b>	<b>+5</b>	<b>+0</b>	<b>+0</b>	<b>+0</b>	<b>+133.3%</b>	<b>+250.0%</b>	<b>+55.6%</b>	<b>+1.3%</b>	<b>+0.1%</b>
Registrar, Specialist	52	+7	+5	-5	-5	-1	+16.2%	+10.7%	-2.8%	-8.3%	-1.3%
Specialist Registrar, Anaesthesia	1	+1					-100.0%				
Specialist Registrar, Emergency Medicine	4	+4	+2	-2	-2	-1	-100.0%	+100.0%	+6.7%	-33.3%	-11.1%
Specialist Registrar, Obstetrics & Gynaecology	1	+1	+0				-100.0%	+2.0%			
<b>Specialist Registrar</b>	<b>58</b>	<b>+13</b>	<b>+7</b>	<b>-7</b>	<b>-7</b>	<b>-1</b>	<b>+29.6%</b>	<b>+13.8%</b>	<b>-2.1%</b>	<b>-10.3%</b>	<b>-2.0%</b>
<b>Registrars</b>	<b>202</b>	<b>+38</b>	<b>+12</b>	<b>+12</b>	<b>-2</b>	<b>-0</b>	<b>+23.2%</b>		<b>+6.0%</b>	<b>-0.9%</b>	<b>-0.1%</b>
Intern	101	+47	+45			+0	+87.0%	+80.4%	+80.4%		+0.2%
<b>Interns</b>	<b>101</b>	<b>+47</b>	<b>+45</b>			<b>+0</b>	<b>+87.0%</b>	<b>+80.4%</b>	<b>+80.4%</b>		<b>+0.2%</b>
House Officer, Senior	133	+7	+16	-11	-11	+1	+5.3%	+14.0%	+0.3%	-7.3%	+1.1%
Senior House Officer, Emergency Medicine	5	+5	+3	+1	+1		-100.0%	+150.0%	+400.0%	+25.0%	
Senior House Officer, Medicine	8	+2	+1	-2	-2		+33.3%	+14.3%	+14.3%	-20.0%	
Senior House Officer, Psychiatry	5	+4	+5	+5	+5	+0	+400.0%	-100.0%	-100.0%	-100.0%	+3.1%
<b>Senior House Officer</b>	<b>151</b>	<b>+18</b>	<b>+25</b>	<b>-7</b>	<b>-7</b>	<b>+2</b>	<b>+13.3%</b>	<b>+20.2%</b>	<b>+7.4%</b>	<b>-4.2%</b>	<b>+1.1%</b>
<b>SHO/ Interns</b>	<b>252</b>	<b>+65</b>	<b>+55</b>	<b>+55</b>	<b>-7</b>	<b>+2</b>	<b>+34.5%</b>		<b>+28.1%</b>	<b>-2.5%</b>	<b>+0.7%</b>
Area Medical Officer	0	-1					-61.9%				
Area Medical Officer, Senior	0	+0				+0	-100.0%				+2.1%
<b>Other Medical</b>	<b>1</b>	<b>-0</b>				<b>+0</b>	<b>-3.6%</b>				<b>+1.2%</b>



Mar 2021 (Dec 2017 figure: 3,974)	WTE Mar 2021	WTE change since Dec 17	WTE change since Dec 18	WTE change since Dec 20	WTE change since Dec 20	WTE change since Feb 21	% change since Dec 17	% change since Dec 18	% change since Dec 19	% change since Dec 20	% change since Feb 21
<b>Overall</b>	<b>4,689</b>	<b>+715</b>	<b>+535</b>	<b>+183</b>	<b>+183</b>	<b>+75</b>	<b>+18.0%</b>	<b>+12.9%</b>	<b>+13.1%</b>	<b>+4.1%</b>	<b>+1.6%</b>
<b>Medical/ Dental, other</b>	<b>1</b>	<b>-0</b>				<b>+0</b>	<b>-3.6%</b>				<b>+1.2%</b>
<b>Medical &amp; Dental</b>	<b>640</b>	<b>+136</b>	<b>+87</b>	<b>+87</b>	<b>-7</b>	<b>+4</b>	<b>+27.0%</b>		<b>+15.7%</b>	<b>-1.0%</b>	<b>+0.7%</b>
Clinical Midwife Manager 1	11	+0	-3	-1	-1	+0	+3.1%	-19.4%	+40.0%	-5.4%	+1.2%
Clinical Midwife Manager 2	20	+1	+1	+1	+1	-1	+7.4%	+7.0%	+38.5%	+4.5%	-4.9%
Clinical Midwife Manager 3	4	+0	+0	+1	+1	+0	+1.1%	+1.1%	+37.5%	+29.6%	+0.5%
Clinical Nurse Manager 1	56	-4	+0	-6	-6	-2	-6.1%	+0.7%	-10.0%	-9.0%	-3.8%
Clinical Nurse Manager 1 - Theatre	7	+2	+3	+1	+1	+0	+47.2%	+86.7%	+13.2%	+10.2%	+0.4%
Clinical Nurse Manager 2	171	+22	+12	+5	+5	-1	+14.8%	+7.5%	+10.2%	+2.9%	-0.4%
Clinical Nurse Manager 2 - Night	1	-1	-1				-50.0%	-50.0%			
Clinical Nurse Manager 2 - Theatre	14	+1	+0	+1	+1	+1	+4.9%	+2.1%	-14.2%	+5.2%	+6.5%
Clinical Nurse Manager 3	18	+6	+5	+3	+3	+1	+55.2%	+36.4%	+51.1%	+22.9%	+7.0%
Clinical Nurse Manager 3 - Night	1	-3	-3	-1	-1	-1	-77.5%	-73.3%	-63.6%	-50.0%	-50.0%
Clinical Nurse Manager 3 - Theatre	1	-1	-0	-0	-0		-54.7%	-13.0%	-7.4%	-8.4%	
<b>Clinical Nurse/ Midwife Manager</b>	<b>303</b>	<b>+24</b>	<b>+16</b>	<b>+4</b>	<b>+4</b>	<b>-3</b>	<b>+8.6%</b>	<b>+5.4%</b>	<b>+7.8%</b>	<b>+1.3%</b>	<b>-0.9%</b>
Director of Midwifery 1, Assistant	1	+1	+1				-100.0%	-100.0%			
Director of Nursing 1, Assistant	27	+2	+3	-1	-1	-0	+8.0%	+10.7%	+1.6%	-2.7%	-0.2%
Director of Nursing 2, Assistant	8	+2	+3	+1	+1	+1	+33.2%	+59.8%	+33.2%	+14.1%	+14.1%
Director of Nursing 3, Assistant	6	+3					+83.3%		+57.1%		
<b>Director Nursing/Midwifery, Assistant</b>	<b>42</b>	<b>+8</b>	<b>+7</b>	<b>+0</b>	<b>+0</b>	<b>+1</b>	<b>+21.9%</b>	<b>+18.9%</b>	<b>+11.9%</b>	<b>+0.6%</b>	<b>+2.3%</b>
Director of Nursing 1	2		-1					-30.8%			
Director of Nursing 3	3		+0	+0	+0			+0.3%	+0.3%	+0.3%	
Director of Nursing 4							-100.0%	-100.0%	-100.0%	-100.0%	-100.0%
Director of Nursing & Midwifery, Hospital Group	1		-1					-33.3%			
<b>Director of Nursing/Midwifery</b>	<b>6</b>		<b>-1</b>	<b>+0</b>	<b>+0</b>			<b>-18.7%</b>	<b>-14.2%</b>	<b>+0.2%</b>	
<b>Nurse/ Midwife Manager</b>	<b>351</b>	<b>+31</b>	<b>+25</b>	<b>+25</b>	<b>+4</b>	<b>-2</b>	<b>+9.9%</b>		<b>+7.8%</b>	<b>+1.2%</b>	<b>-0.5%</b>
Advanced Midwife Practitioner	1	+1					-100.0%				
Advanced Nurse Practitioner, Candidate (General)	10	+10	+2	+2	+2	+0	-100.0%	+27.1%	+42.9%	+24.1%	+1.2%
Advanced Nurse Practitioner (General)	20	+13	+12	+2	+2	+1	+185.5%	+149.8%	+42.6%	+10.7%	+3.7%
<b>Advanced Nurse/ Midwife Practitioner</b>	<b>31</b>	<b>+24</b>	<b>+14</b>	<b>+4</b>	<b>+4</b>	<b>+1</b>	<b>+344.5%</b>	<b>+83.3%</b>	<b>+40.7%</b>	<b>+14.3%</b>	<b>+2.8%</b>
Clinical Midwife Specialist	3	-0	-0	+0	+0	+0	-1.5%	-9.6%	+35.6%	+2.4%	+2.4%
Clinical Nurse Specialist (Children's)	1	+0	+0				+1.0%	+1.0%	+1.0%		
Clinical Nurse Specialist (General)	53	+6	+4	+2	+2	-0	+14.1%	+7.2%	+2.9%	+3.1%	-0.6%
<b>Clinical Nurse/ Midwife Specialist</b>	<b>56</b>	<b>+6</b>	<b>+3</b>	<b>+2</b>	<b>+2</b>	<b>-0</b>	<b>+13.0%</b>	<b>+6.2%</b>	<b>+4.0%</b>	<b>+3.0%</b>	<b>-0.5%</b>
<b>Nurse/ Midwife Specialist &amp; AN/MP</b>	<b>87</b>	<b>+30</b>	<b>+11</b>	<b>+11</b>	<b>+5</b>	<b>+1</b>	<b>+53.5%</b>		<b>+14.6%</b>	<b>+6.7%</b>	<b>+0.7%</b>
Enhanced Midwife	65	+65	+65	+15	+15	+4	-100.0%	-100.0%	-100.0%	+29.0%	+7.1%



Mar 2021 (Dec 2017 figure: 3,974)	WTE Mar 2021	WTE change since Dec 17	WTE change since Dec 18	WTE change since Dec 20	WTE change since Dec 20	WTE change since Feb 21	% change since Dec 17	% change since Dec 18	% change since Dec 19	% change since Dec 20	% change since Feb 21
<b>Overall</b>	<b>4,689</b>	<b>+715</b>	<b>+535</b>	<b>+183</b>	<b>+183</b>	<b>+75</b>	<b>+18.0%</b>	<b>+12.9%</b>	<b>+13.1%</b>	<b>+4.1%</b>	<b>+1.6%</b>
Enhanced Midwife, Senior	24	+24	+24	+1	+1	+1	-100.0%	-100.0%	-100.0%	+5.9%	+3.7%
Staff Midwife	50	-77	-73	-14	-14	-6	-60.4%	-59.2%	-61.0%	-21.6%	-10.9%
Staff Midwife, Senior	10	-9	-8	-2	-2	+0	-46.4%	-44.9%	-38.1%	-18.3%	+0.5%
<b>Staff Midwives</b>	<b>149</b>	<b>+4</b>	<b>+8</b>	<b>-0</b>	<b>-0</b>	<b>-1</b>	<b>+2.9%</b>	<b>+5.9%</b>	<b>+3.2%</b>	<b>-0.0%</b>	<b>-0.6%</b>
Enhanced Nurse (General)	448	+448	+448	+68	+68	+25	-100.0%	-100.0%	-100.0%	+17.8%	+5.9%
Enhanced Nurse, Senior (General)	226	+226	+226	+26	+26	+9	-100.0%	-100.0%	-100.0%	+13.2%	+4.1%
Staff Nurse - General	435	-371	-437	-13	-13	+15	-46.1%	-50.1%	-48.9%	-2.9%	+3.7%
Staff Nurse, Senior (Dual Qualified)	20	-17	-14	-6	-6	+2	-45.8%	-41.4%	-35.8%	-22.0%	+13.7%
Staff Nurse, Senior (General)	78	-99	-114	-19	-19	-8	-55.9%	-59.2%	-60.5%	-19.2%	-9.2%
<b>Staff Nurses [General/ Children's]</b>	<b>1,208</b>	<b>+187</b>	<b>+110</b>	<b>+57</b>	<b>+57</b>	<b>+44</b>	<b>+18.3%</b>	<b>+10.0%</b>	<b>+11.7%</b>	<b>+5.0%</b>	<b>+3.7%</b>
<b>Staff Nurse/ Staff Midwife</b>	<b>1,357</b>	<b>+191</b>	<b>+131</b>	<b>+131</b>	<b>+57</b>	<b>+43</b>	<b>+16.4%</b>		<b>+10.7%</b>	<b>+4.4%</b>	<b>+3.3%</b>
Student General Nursing Intern (pre-registration)	24	+24	+24	+24	+24	+0	+3845.2%	+2617.8%	+20283.3%	-100.0%	+0.7%
Student Midwifery Intern (pre-registration)	10	+9	+8	+9	+9		+7816.7%	+512.9%	+216.7%	+850.0%	
<b>Pre-registration Nurse/ Midwife Intern</b>	<b>34</b>	<b>+33</b>	<b>+32</b>	<b>+33</b>	<b>+33</b>	<b>+0</b>	<b>+4489.2%</b>	<b>+1286.1%</b>	<b>+988.5%</b>	<b>+3296.0%</b>	<b>+0.5%</b>
Student General Nursing Intern (COVID-19 HCA)				-1	-1		-100.0%	-100.0%	-100.0%	-100.0%	-100.0%
<b>Pre-registration Nurse Intern (COVID-19)</b>				<b>-1</b>	<b>-1</b>		<b>-100.0%</b>	<b>-100.0%</b>	<b>-100.0%</b>	<b>-100.0%</b>	<b>-100.0%</b>
Student Midwifery (post registration)	13	+8	+3	+3	+3	-2	+164.7%	+31.4%	-17.0%	+31.4%	-13.4%
<b>Post-registration Nurse/ Midwife Student</b>	<b>13</b>	<b>+8</b>	<b>+3</b>	<b>+3</b>	<b>+3</b>	<b>-2</b>	<b>+164.7%</b>	<b>+31.4%</b>	<b>-17.0%</b>	<b>+31.4%</b>	<b>-13.4%</b>
<b>Nursing/ Midwifery Student</b>	<b>47</b>	<b>+41</b>	<b>+28</b>	<b>+28</b>	<b>+35</b>	<b>-2</b>	<b>+726.1%</b>		<b>+148.8%</b>	<b>+292.7%</b>	<b>-3.8%</b>
Director, Nursing/ Midwifery Education Centre		-1	-1				-100.0%	-100.0%	-100.0%	-100.0%	-100.0%
Nurse Tutor	1	-0		-0	-0		-5.9%			-20.0%	
Nursing/ Midwifery Clinical Placement Co-ordinator	9	+2	+2	+1	+1	+0	+21.4%	+21.9%	+26.4%	+8.7%	+4.5%
Nursing/ Midwifery Practice Development Co-ordinator	1										
Specialist Co-ordinator, Nursing	1								-50.0%		
<b>Nursing Education/Clinical</b>	<b>12</b>	<b>+1</b>	<b>+1</b>	<b>+1</b>	<b>+1</b>	<b>+0</b>	<b>+5.0%</b>	<b>+5.8%</b>	<b>+8.4%</b>	<b>+4.8%</b>	<b>+3.5%</b>
<b>Nursing/ Midwifery other</b>	<b>12</b>	<b>+1</b>	<b>+1</b>	<b>+1</b>	<b>+1</b>	<b>+0</b>	<b>+5.0%</b>		<b>+8.4%</b>	<b>+4.8%</b>	<b>+3.5%</b>
<b>Nursing &amp; Midwifery</b>	<b>1,854</b>	<b>+295</b>	<b>+197</b>	<b>+197</b>	<b>+102</b>	<b>+40</b>	<b>+18.9%</b>		<b>+11.9%</b>	<b>+5.8%</b>	<b>+2.2%</b>
Dietitian	4	-1	+2	+2	+2	+1	-17.7%	+101.0%	+101.0%	+101.0%	+14.9%
Dietitian, Clinical Specialist	1	+1	+1			-0	+164.0%	+164.0%	+164.0%		-2.2%
Dietitian Manager	1		+0	+0	+0			+3.1%		+8.7%	
Dietitian, Senior	13	+3	-1	-1	-1	-0	+23.0%	-7.6%	-2.1%	-6.3%	-1.3%
<b>Dietitians</b>	<b>20</b>	<b>+2</b>	<b>+2</b>	<b>+1</b>	<b>+1</b>	<b>+0</b>	<b>+14.3%</b>	<b>+9.8%</b>	<b>+14.9%</b>	<b>+6.4%</b>	<b>+1.6%</b>
Occupational Therapist	2	+2	+2	+1	+1	+1	-100.0%	-100.0%	-100.0%	+50.0%	+50.0%
Occupational Therapist, Clinical Specialist			-1				-100.0%	-100.0%	-100.0%	-100.0%	-100.0%

Mar 2021 (Dec 2017 figure: 3,974)	WTE Mar 2021	WTE change since Dec 17	WTE change since Dec 18	WTE change since Dec 20	WTE change since Dec 20	WTE change since Feb 21	% change since Dec 17	% change since Dec 18	% change since Dec 19	% change since Dec 20	% change since Feb 21
<b>Overall</b>	<b>4,689</b>	<b>+715</b>	<b>+535</b>	<b>+183</b>	<b>+183</b>	<b>+75</b>	<b>+18.0%</b>	<b>+12.9%</b>	<b>+13.1%</b>	<b>+4.1%</b>	<b>+1.6%</b>
Occupational Therapist Manager	1	+1	+1				-100.0%	-100.0%	-100.0%		
Occupational Therapist, Senior	7	+3	+2	-1	-1	-1	+64.2%	+47.8%	-1.5%	-14.6%	-9.1%
<b>Occupational Therapists</b>	<b>10</b>	<b>+5</b>	<b>+4</b>	<b>-1</b>	<b>-1</b>	<b>-0</b>	<b>+119.8%</b>	<b>+70.5%</b>	<b>+31.9%</b>	<b>-7.1%</b>	<b>-2.4%</b>
Orthoptist, Senior		-1					-100.0%	-100.0%	-100.0%	-100.0%	-100.0%
<b>Orthoptists</b>		<b>-1</b>					<b>-100.0%</b>	<b>-100.0%</b>	<b>-100.0%</b>	<b>-100.0%</b>	<b>-100.0%</b>
Physiotherapist	20	-3	-1	+5	+5	+4	-14.9%	-4.8%	+8.1%	+36.6%	+24.8%
Physiotherapist, Clinical Specialist	2		-4	-3	-3			-63.6%	-55.1%	-62.8%	
Physiotherapist-in-charge (Grade III)	1										
Physiotherapist Manager	4	+2	+1	+1	+1	+0	+136.7%	+33.3%	+37.9%	+33.3%	+2.8%
Physiotherapist, Senior	31	+8	+7	-0	-0	-1	+36.1%	+28.4%	+22.5%	-0.9%	-2.7%
<b>Physiotherapists</b>	<b>58</b>	<b>+7</b>	<b>+3</b>	<b>+3</b>	<b>+3</b>	<b>+3</b>	<b>+13.8%</b>	<b>+6.1%</b>	<b>+11.2%</b>	<b>+4.9%</b>	<b>+5.9%</b>
Chiropodist/ Podiatrist, Senior	4	+3	+2	+0	+0	-0	+153.3%	+59.1%	+42.7%	+7.0%	-0.5%
<b>Podiatrists &amp; Chiropodists</b>	<b>4</b>	<b>+3</b>	<b>+2</b>	<b>+0</b>	<b>+0</b>	<b>-0</b>	<b>+153.3%</b>	<b>+59.1%</b>	<b>+42.7%</b>	<b>+7.0%</b>	<b>-0.5%</b>
Speech & Language Therapist	2	+2	+2	+1	+1	+0	-100.0%	-100.0%	-100.0%	+75.0%	+1.2%
Speech & Language Therapist Manager	1	+1	+1				-100.0%	-100.0%	-100.0%		
Speech & Language Therapist, Senior	7	+2	+1	+1	+1		+54.3%	+19.8%	+93.4%	+8.0%	
Speech & Language Therapy, Practice Tutor	1	+1	+1				-100.0%	-100.0%			
<b>Speech &amp; Language Therapists</b>	<b>11</b>	<b>+6</b>	<b>+5</b>	<b>+1</b>	<b>+1</b>	<b>+0</b>	<b>+136.7%</b>	<b>+83.8%</b>	<b>+132.6%</b>	<b>+13.4%</b>	<b>+0.2%</b>
<b>Therapy Professions</b>	<b>102</b>	<b>+23</b>	<b>+18</b>	<b>+18</b>	<b>+5</b>	<b>+3</b>	<b>+28.4%</b>		<b>+21.6%</b>	<b>+4.8%</b>	<b>+3.3%</b>
Audiologist, Chief		-1	-1	-1	-1	-1	-100.0%	-100.0%	-100.0%	-100.0%	-100.0%
<b>Audiology</b>		<b>-1</b>	<b>-1</b>	<b>-1</b>	<b>-1</b>	<b>-1</b>	<b>-100.0%</b>	<b>-100.0%</b>	<b>-100.0%</b>	<b>-100.0%</b>	<b>-100.0%</b>
Biochemist	1	+1	+0				-100.0%	+20.5%	+17.6%		
Biochemist, Principal	1	+1					-100.0%				
Biochemist, Senior	5	+3	+1	-0	-0		+140.0%	+31.5%	-4.0%	-2.6%	
<b>Biochemists</b>	<b>7</b>	<b>+5</b>	<b>+1</b>	<b>-0</b>	<b>-0</b>		<b>+240.0%</b>	<b>+24.1%</b>	<b>-0.7%</b>	<b>-1.9%</b>	
Clinical Engineering Technician	8	+6	+6	+6	+6	+4	+283.0%	+283.0%	-100.0%	+283.0%	+118.9%
Clinical Engineering Technician, Principal	3	+1	+1	+0	+0		+50.0%	+50.0%	+50.0%	+0.3%	
Clinical Engineering Technician, Senior	3	+1	+0	+0	+0	+0	+51.5%	+0.7%	-24.6%	+0.7%	+4.2%
<b>Clinical Engineering</b>	<b>14</b>	<b>+8</b>	<b>+7</b>	<b>+6</b>	<b>+6</b>	<b>+4</b>	<b>+128.4%</b>	<b>+95.7%</b>	<b>+128.4%</b>	<b>+71.4%</b>	<b>+45.6%</b>
Cardiac Physiologist	7	-3	-3	-1	-1	-1	-30.5%	-27.1%	-1.9%	-13.4%	-9.8%
Cardiac Physiologist, Chief II	2	+1	+1				+100.0%	+100.0%			
Cardiac Physiologist, Senior	9	+2	+2	+2	+2	+1	+34.5%	+34.1%	+33.1%	+36.5%	+14.7%
E.C.G. Technician	1	-1	-1	-1	-1	+1	-34.5%	-34.5%	-34.5%	-27.6%	+61.7%
Neuro-Physiologist, Chief I	1	-0	-0				-28.6%	-28.6%	-28.6%		
Respiratory Physiologist	4		+0	+0	+0			+1.0%	+0.5%	+0.5%	

Mar 2021 (Dec 2017 figure: 3,974)	WTE Mar 2021	WTE change since Dec 17	WTE change since Dec 18	WTE change since Dec 20	WTE change since Dec 20	WTE change since Feb 21	% change since Dec 17	% change since Dec 18	% change since Dec 19	% change since Dec 20	% change since Feb 21
<b>Overall</b>	<b>4,689</b>	<b>+715</b>	<b>+535</b>	<b>+183</b>	<b>+183</b>	<b>+75</b>	<b>+18.0%</b>	<b>+12.9%</b>	<b>+13.1%</b>	<b>+4.1%</b>	<b>+1.6%</b>
Vascular Physiologist	1	-1	-1	-0	-0	-0	-51.0%	-51.0%	-2.0%	-2.0%	-2.0%
Vascular Physiologist, Chief II	1	+1	+1				-100.0%	-100.0%	-100.0%		
Vascular Physiologist, Senior	1	+0					+61.3%		-47.4%		
<b>Clinical Measurement</b>	<b>27</b>	<b>-1</b>	<b>-1</b>	<b>+1</b>	<b>+1</b>	<b>+1</b>	<b>-2.5%</b>	<b>-2.1%</b>	<b>+3.8%</b>	<b>+2.5%</b>	<b>+3.0%</b>
Laboratory Manager	1										
Medical Scientist	68	-12	-4	-5	-5	-5	-14.7%	-5.9%	-11.4%	-6.6%	-6.5%
Medical Scientist, Chief	9	+0	-2	+1	+1	-0	+2.7%	-15.8%	+13.7%	+13.7%	-1.4%
Medical Scientist, Senior	45	-0	+1	+1	+1	+2	-0.1%	+1.7%	+1.5%	+3.1%	+4.0%
Medical Scientist, Specialist	1			+0	+0				-100.0%	+2.0%	
<b>Medical Science</b>	<b>123</b>	<b>-11</b>	<b>-5</b>	<b>-2</b>	<b>-2</b>	<b>-3</b>	<b>-8.5%</b>	<b>-4.1%</b>	<b>-4.6%</b>	<b>-1.8%</b>	<b>-2.5%</b>
Phlebotomist		-2	-1				-100.0%	-100.0%	-100.0%	-100.0%	-100.0%
<b>Phlebotomists</b>		<b>-2</b>	<b>-1</b>				<b>-100.0%</b>	<b>-100.0%</b>	<b>-100.0%</b>	<b>-100.0%</b>	<b>-100.0%</b>
Physicist, Senior	2	+2	-0	-0	-0	-0	-100.0%	-7.5%	-7.5%	-7.5%	-7.5%
<b>Physicists</b>	<b>2</b>	<b>+2</b>	<b>-0</b>	<b>-0</b>	<b>-0</b>	<b>-0</b>	<b>-100.0%</b>	<b>-7.5%</b>	<b>-7.5%</b>	<b>-7.5%</b>	<b>-7.5%</b>
Radiographer	42	+7	+3	-1	-1	+0	+21.8%	+8.8%	+11.6%	-3.0%	+0.0%
Radiographer, Clinical Specialist	16	-1	-2	-1	-1	-0	-6.0%	-10.8%	+1.0%	-5.1%	-0.5%
Radiographer, Senior	19	+2	+4	+1	+1	+0	+12.7%	+25.4%	-8.3%	+6.4%	+0.3%
Radiography Service Manager, I	6	+2	-0	-0	-0		+44.3%	-0.9%		-3.4%	
Radiography Service Manager, II	1										
<b>Radiographers</b>	<b>83</b>	<b>+10</b>	<b>+5</b>	<b>-1</b>	<b>-1</b>	<b>-0</b>	<b>+14.2%</b>	<b>+6.8%</b>	<b>+3.4%</b>	<b>-1.4%</b>	<b>-0.0%</b>
<b>Health Science/ Diagnostics</b>	<b>256</b>	<b>+10</b>	<b>+4</b>	<b>+4</b>	<b>+2</b>	<b>+1</b>	<b>+3.9%</b>		<b>+1.4%</b>	<b>+0.6%</b>	<b>+0.5%</b>
Social Worker	8	+2	+3	+2	+2	+0	+30.4%	+55.3%	+14.9%	+32.1%	+6.2%
Social Worker, Principal	1										
Social Worker, Senior Medical	3	+3	+2	+2	+2	+0	-100.0%	+206.5%	+42.5%	+185.0%	+14.0%
Social Work Practitioner, Senior	2	+1	+1	-1	-1	+1	+81.0%	+81.0%	+81.0%	-38.0%	+82.8%
<b>Social Workers</b>	<b>14</b>	<b>+6</b>	<b>+6</b>	<b>+3</b>	<b>+3</b>	<b>+2</b>	<b>+67.1%</b>	<b>+68.8%</b>	<b>+24.5%</b>	<b>+24.6%</b>	<b>+13.5%</b>
<b>Social Workers</b>	<b>14</b>	<b>+6</b>	<b>+3</b>	<b>+3</b>	<b>+3</b>	<b>+2</b>	<b>+67.1%</b>		<b>+24.5%</b>	<b>+24.6%</b>	<b>+13.5%</b>
Psychologist, Senior Clinical	4	+2	+2				+75.0%	+75.0%	+18.2%		
<b>Psychologists</b>	<b>4</b>	<b>+2</b>	<b>+2</b>				<b>+75.0%</b>	<b>+75.0%</b>	<b>+18.2%</b>		
<b>Psychologists</b>	<b>4</b>	<b>+2</b>	<b>+1</b>	<b>+1</b>			<b>+75.0%</b>		<b>+18.2%</b>		
Pharmaceutical Technician	15	+2	+1	-1	-1	-1	+16.7%	+4.4%	+6.2%	-5.4%	-3.4%
Pharmaceutical Technician, Senior	6	-0	-0	+0	+0	+0	-6.6%	-6.3%	-1.7%	+5.6%	+1.9%
Pharmacist	4	+0	+1	+0	+0	+0	+10.8%	+35.1%	-100.0%	+5.0%	+5.0%
Pharmacist, Chief I	1										
Pharmacist, Chief II	5	+1	-0	+0	+0		+25.1%	-0.2%	+25.1%	+0.4%	

Mar 2021 (Dec 2017 figure: 3,974)	WTE Mar 2021	WTE change since Dec 17	WTE change since Dec 18	WTE change since Dec 20	WTE change since Dec 20	WTE change since Feb 21	% change since Dec 17	% change since Dec 18	% change since Dec 19	% change since Dec 20	% change since Feb 21
<b>Overall</b>	<b>4,689</b>	<b>+715</b>	<b>+535</b>	<b>+183</b>	<b>+183</b>	<b>+75</b>	<b>+18.0%</b>	<b>+12.9%</b>	<b>+13.1%</b>	<b>+4.1%</b>	<b>+1.6%</b>
Pharmacist, Senior	20	+4	+2	-0	-0	+0	+26.8%	+12.2%	+0.2%	-0.2%	+0.0%
<b>Pharmacy</b>	<b>51</b>	<b>+7</b>	<b>+3</b>	<b>-0</b>	<b>-0</b>	<b>-0</b>	<b>+17.0%</b>	<b>+7.3%</b>	<b>+12.9%</b>	<b>-0.7%</b>	<b>-0.4%</b>
<b>Pharmacy</b>	<b>51</b>	<b>+7</b>	<b>+6</b>	<b>+6</b>	<b>-0</b>	<b>-0</b>	<b>+17.0%</b>		<b>+12.9%</b>	<b>-0.7%</b>	<b>-0.4%</b>
E.E.G./ E.C.G. Technician, Student	1										
Medical Scientist, Student	7	+3	+2	+4	+4		+66.3%	+33.0%	+47.8%	+121.7%	
Pharmacist, Student		-2	-2				-100.0%	-100.0%	-100.0%	-100.0%	-100.0%
<b>HSCP Trainees/ Students</b>	<b>8</b>	<b>+1</b>	<b>-0</b>	<b>+4</b>	<b>+4</b>		<b>+9.4%</b>	<b>-4.4%</b>	<b>+39.9%</b>	<b>+93.8%</b>	
Play Specialist	2	+0				+0	+8.1%				+1.0%
<b>Play Therapists/ Specialists</b>	<b>2</b>	<b>+0</b>				<b>+0</b>	<b>+8.1%</b>				<b>+1.0%</b>
<b>H&amp;SC, Other</b>	<b>10</b>	<b>+1</b>	<b>+2</b>	<b>+2</b>	<b>+4</b>	<b>+0</b>	<b>+9.2%</b>		<b>+29.1%</b>	<b>+62.0%</b>	<b>+0.2%</b>
<b>Health &amp; Social Care Professionals</b>	<b>436</b>	<b>+48</b>	<b>+33</b>	<b>+33</b>	<b>+12</b>	<b>+6</b>	<b>+12.3%</b>		<b>+8.2%</b>	<b>+2.9%</b>	<b>+1.4%</b>
CEO (Band H2 Hospital)	1	+1	+1				-100.0%	-100.0%			
Chief Executive Officer		-1	-1				-100.0%	-100.0%	-100.0%	-100.0%	-100.0%
Head of Function /Service, Acute Services	1	+1	+1				-100.0%	-100.0%	-100.0%		
National Director, Assistant (Services)	2	+1	+1			+0	+100.0%	+100.0%	+100.0%		+2.6%
National Director, Assistant (Support)	2	+1	-0	-0	-0	+0	+99.0%	-0.5%	-33.7%	-0.5%	+2.1%
<b>Executive Management</b>	<b>6</b>	<b>+3</b>	<b>+2</b>	<b>-0</b>	<b>-0</b>	<b>+0</b>	<b>+99.7%</b>	<b>+49.8%</b>	<b>+19.8%</b>	<b>-0.2%</b>	<b>+1.5%</b>
Functional Officer	1										
General Manager	11	-3	-2	-0	-0	+0	-22.1%	-15.5%	-8.8%	-0.4%	+0.4%
Grade VIII	17	-0	+1	-3	-3	-2	-0.3%	+3.3%	-6.6%	-14.2%	-10.2%
<b>Senior Management (VIII &amp; GM)</b>	<b>28</b>	<b>-3</b>	<b>-1</b>	<b>-3</b>	<b>-3</b>	<b>-2</b>	<b>-9.9%</b>	<b>-4.9%</b>	<b>-7.3%</b>	<b>-8.9%</b>	<b>-6.1%</b>
<b>Management (VIII &amp; above)</b>	<b>34</b>	<b>-0</b>	<b>-1</b>	<b>-1</b>	<b>-3</b>	<b>-2</b>	<b>-0.4%</b>		<b>-3.5%</b>	<b>-7.5%</b>	<b>-4.8%</b>
Grade V	73	+37	+33	+15	+15	+14	+101.0%	+81.4%	+70.0%	+26.2%	+22.9%
Grade VI	16	-5	-2	-1	-1	-1	-24.7%	-12.4%	-1.7%	-7.1%	-8.2%
Grade VII	58	+16	+13	+4	+4	+2	+36.9%	+29.1%	+33.5%	+7.8%	+3.9%
<b>Middle Management (V-VII)</b>	<b>147</b>	<b>+47</b>	<b>+43</b>	<b>+18</b>	<b>+18</b>	<b>+14</b>	<b>+46.9%</b>	<b>+42.0%</b>	<b>+43.1%</b>	<b>+14.0%</b>	<b>+10.8%</b>
<b>Administrative/ Supervisory (V to VII)</b>	<b>147</b>	<b>+47</b>	<b>+44</b>	<b>+44</b>	<b>+18</b>	<b>+14</b>	<b>+46.9%</b>		<b>+43.1%</b>	<b>+14.0%</b>	<b>+10.8%</b>
Clerical Officer	426	+30	+10	+25	+25	+14	+7.6%	+2.4%	+14.8%	+6.4%	+3.4%
Grade IV	96	-18	-7	-10	-10	-14	-16.0%	-7.0%	-15.3%	-9.7%	-12.9%
Supplies Officer Grade C	1										
<b>General Administrative (III &amp; IV)</b>	<b>523</b>	<b>+12</b>	<b>+3</b>	<b>+15</b>	<b>+15</b>	<b>-0</b>	<b>+2.3%</b>	<b>+0.5%</b>	<b>+7.7%</b>	<b>+3.0%</b>	<b>-0.0%</b>
<b>Clerical (III &amp; IV)</b>	<b>523</b>	<b>+12</b>	<b>+37</b>	<b>+37</b>	<b>+15</b>	<b>-0</b>	<b>+2.3%</b>		<b>+7.7%</b>	<b>+3.0%</b>	<b>-0.0%</b>
<b>Management &amp; Administrative</b>	<b>704</b>	<b>+59</b>	<b>+80</b>	<b>+80</b>	<b>+30</b>	<b>+12</b>	<b>+9.1%</b>		<b>+12.9%</b>	<b>+4.5%</b>	<b>+1.8%</b>

Mar 2021 (Dec 2017 figure: 3,974)	WTE Mar 2021	WTE change since Dec 17	WTE change since Dec 18	WTE change since Dec 20	WTE change since Dec 20	WTE change since Feb 21	% change since Dec 17	% change since Dec 18	% change since Dec 19	% change since Dec 20	% change since Feb 21
<b>Overall</b>	<b>4,689</b>	<b>+715</b>	<b>+535</b>	<b>+183</b>	<b>+183</b>	<b>+75</b>	<b>+18.0%</b>	<b>+12.9%</b>	<b>+13.1%</b>	<b>+4.1%</b>	<b>+1.6%</b>
<b>Catering</b>	<b>30</b>	<b>+4</b>	<b>+7</b>	<b>+3</b>	<b>+3</b>	<b>+0</b>	<b>+14.8%</b>	<b>+30.8%</b>	<b>+20.4%</b>	<b>+12.7%</b>	<b>+0.3%</b>
<b>Household Services</b>	<b>365</b>	<b>+301</b>	<b>+301</b>	<b>+17</b>	<b>+17</b>	<b>+2</b>	<b>+469.3%</b>	<b>+469.6%</b>	<b>+434.3%</b>	<b>+4.8%</b>	<b>+0.5%</b>
<b>Other Labs &amp; Associated</b>	<b>26</b>	<b>-5</b>	<b>-8</b>	<b>-1</b>	<b>-1</b>	<b>-1</b>	<b>-17.3%</b>	<b>-23.1%</b>	<b>-15.5%</b>	<b>-4.1%</b>	<b>-2.5%</b>
<b>Other Support</b>	<b>36</b>	<b>-0</b>	<b>-1</b>	<b>-1</b>	<b>-1</b>	<b>+1</b>	<b>-1.0%</b>	<b>-3.4%</b>	<b>-8.6%</b>	<b>-1.8%</b>	<b>+2.4%</b>
<b>Portering</b>	<b>150</b>	<b>+13</b>	<b>+20</b>	<b>+5</b>	<b>+5</b>	<b>+2</b>	<b>+9.4%</b>	<b>+15.1%</b>	<b>+22.1%</b>	<b>+3.2%</b>	<b>+1.6%</b>
<b>Support</b>	<b>607</b>	<b>+312</b>	<b>+321</b>	<b>+321</b>	<b>+23</b>	<b>+4</b>	<b>+105.5%</b>		<b>+111.9%</b>	<b>+3.9%</b>	<b>+0.7%</b>
Electrician	4	-0	-0	-0	-0	-0	-2.5%	-2.5%	-1.3%	-0.8%	-0.8%
General Operative	8	-1	-1			+0	-11.1%	-11.1%			+0.5%
Maintenance Craftsman/Technician	5	+2	+1	-0	-0	+0	+65.0%	+23.8%	+4.2%	-1.0%	+4.2%
Maintenance Foreman	3		+0					+14.1%			
Maintenance Foreman, Assistant	1										
Maintenance Manager	8	+1	-0	-0	-0	+0	+13.9%	-0.4%	-0.4%	-0.4%	+1.7%
Maintenance Officer	1	-0	-0	-0	-0	-0	-1.0%	-1.0%	-1.0%	-1.0%	-1.0%
Painter	2			+0	+0					+9.3%	
Plumber	5	-0	-1	-0	-0	-0	-0.2%	-17.2%	-17.4%	-0.2%	-0.2%
<b>Maintenance</b>	<b>37</b>	<b>+2</b>	<b>-1</b>	<b>+0</b>	<b>+0</b>	<b>+0</b>	<b>+5.2%</b>	<b>-2.2%</b>	<b>-2.4%</b>	<b>+0.1%</b>	<b>+0.9%</b>
Draughtsman/Technician I	1										
<b>Technical Services</b>	<b>1</b>										
<b>Maintenance/ Technical</b>	<b>38</b>	<b>+2</b>	<b>-1</b>	<b>-1</b>	<b>+0</b>	<b>+0</b>	<b>+5.0%</b>		<b>-2.3%</b>	<b>+0.1%</b>	<b>+0.9%</b>
<b>General Support</b>	<b>645</b>	<b>+313</b>	<b>+320</b>	<b>+320</b>	<b>+23</b>	<b>+5</b>	<b>+94.6%</b>		<b>+98.4%</b>	<b>+3.7%</b>	<b>+0.7%</b>
<b>HCA, Nurse's Aide, etc.</b>	<b>394</b>	<b>-138</b>	<b>-169</b>	<b>+22</b>	<b>+22</b>	<b>+7</b>	<b>-26.0%</b>	<b>-30.1%</b>	<b>-30.7%</b>	<b>+5.9%</b>	<b>+1.7%</b>
Health Care Assistant (Student Nurse/Midwife COVID-19)	2	+2	+2	-1	-1	+0	-100.0%	-100.0%	-100.0%	-44.8%	+11.2%
<b>HCA (Student Nurse/Midwife COVID-19)</b>	<b>2</b>	<b>+2</b>	<b>+2</b>	<b>-1</b>	<b>-1</b>	<b>+0</b>	<b>-100.0%</b>	<b>-100.0%</b>	<b>-100.0%</b>	<b>-44.8%</b>	<b>+11.2%</b>
Physiotherapy Assistant	6	+0	-0	+0	+0	-0	+3.0%	-4.9%	-9.6%	+0.3%	-0.0%
Radiography Aide	3										
<b>Health &amp; Social Care Assistants</b>	<b>8</b>	<b>+0</b>	<b>-0</b>	<b>+0</b>	<b>+0</b>		<b>+2.1%</b>	<b>-3.4%</b>	<b>-6.9%</b>	<b>+0.2%</b>	
<b>Health Care Assistants</b>	<b>404</b>	<b>-137</b>	<b>-173</b>	<b>-173</b>	<b>+20</b>	<b>+7</b>	<b>-25.3%</b>		<b>-30.0%</b>	<b>+5.3%</b>	<b>+1.7%</b>
Chaplain	5	+1	-1	+0	+0	+0	+14.3%	-10.7%	-9.7%	+2.6%	+5.1%
Head of Bed Management (Category B)	1			+1	+1	+1				-100.0%	-100.0%
Pastoral Care Worker	1										
<b>Other Care Grades</b>	<b>7</b>	<b>+1</b>	<b>-1</b>	<b>+1</b>	<b>+1</b>	<b>+1</b>	<b>+9.9%</b>	<b>-7.9%</b>	<b>-7.2%</b>	<b>+18.9%</b>	<b>+21.3%</b>
<b>Care, other</b>	<b>7</b>	<b>+1</b>	<b>-1</b>	<b>-1</b>	<b>+1</b>	<b>+1</b>	<b>+9.9%</b>		<b>-7.2%</b>	<b>+18.9%</b>	<b>+21.3%</b>
<b>Patient &amp; Client Care</b>	<b>411</b>	<b>-136</b>	<b>-174</b>	<b>-174</b>	<b>+22</b>	<b>+8</b>	<b>-24.9%</b>		<b>-29.7%</b>	<b>+5.5%</b>	<b>+2.0%</b>

Mar 2021 (Dec 2017 figure: 3,974)	WTE Mar 2021	WTE change since Dec 17	WTE change since Dec 18	WTE change since Dec 20	WTE change since Dec 20	WTE change since Feb 21	% change since Dec 17	% change since Dec 18	% change since Dec 19	% change since Dec 20	% change since Feb 21
Overall	4,689	+715	+535	+183	+183	+75	+18.0%	+12.9%	+13.1%	+4.1%	+1.6%

Source: Health Service Personnel Census

## Longitudinal Employment Levels by Staff Group -Dec 2017 to Mar 2021

Mar 2021 (Dec 2017 figure: 3,974)	WTE Mar 2021	WTE change since Dec 17	WTE change since Dec 18	WTE change since Dec 19	WTE change since Dec 20	WTE change since Feb 21	% change since Dec 17	% change since Dec 18	% change since Dec 19	% change since Dec 20	% change since Feb 21
<b>Overall</b>	<b>4,689</b>	<b>+715</b>	<b>+535</b>	<b>+543</b>	<b>+183</b>	<b>+75</b>	<b>+18.0%</b>	<b>+12.9%</b>	<b>+13.1%</b>	<b>+4.1%</b>	<b>+1.6%</b>
Consultants	9	+4	+5	+4	+1	+1	+72.0%	+115.0%	+75.2%	+13.2%	+9.8%
Registrars	4	-2	-4	+1	+1	+0	-31.7%	-46.1%	+32.3%	+32.3%	+0.5%
SHO/ Interns	14	+5	+5	+9	+6	+1	+55.6%	+55.6%	+180.0%	+76.1%	+3.9%
Nurse/ Midwife Manager	17	-1	+2	+3	-2	+0	-5.4%	+16.4%	+19.9%	-10.2%	+0.1%
Nurse/ Midwife Specialist & AN/MP	6	+3	-0	+0	+1	+1	+96.3%	-5.9%	+1.9%	+23.6%	+16.0%
Staff Nurse/ Staff Midwife	57	+10	+11	+7	+3	+6	+21.2%	+24.1%	+13.3%	+6.2%	+11.1%
Therapy Professions	2	+1	+1	+2	-0	-0	+78.0%	+78.0%	-100.0%	-6.3%	-1.1%
Health Science/ Diagnostics	1	-0	-0	-0	-0		-4.0%	-4.0%	-4.0%	-4.0%	
Administrative/ Supervisory (V to VII)	3	+1	+1	+1	+1	+1	+43.0%	+43.0%	+43.0%	+43.0%	+43.0%
Clerical (III & IV)	17	-0	-0	+2	-0	+0	-0.2%	-1.3%	+13.3%	-1.1%	+1.4%
Support	21	+7	+14	+13	+13	+1	+50.3%	+224.1%	+176.6%	+172.9%	+5.5%
Maintenance/ Technical	1	-1	-1	-1	-1		-50.0%	-50.0%	-50.0%	-50.0%	
Health Care Assistants	45	+6	-1	+1	+0	-0	+16.4%	-1.7%	+1.8%	+0.9%	-0.7%
Care, other	1										
<b>Croom Orthopaedic</b>	<b>197</b>	<b>+32</b>	<b>+33</b>	<b>+41</b>	<b>+24</b>	<b>+10</b>	<b>+19.7%</b>	<b>+20.1%</b>	<b>+26.2%</b>	<b>+13.6%</b>	<b>+5.2%</b>
Consultants	7	+1	+1	-1			+10.3%	+18.1%	-7.8%		
Registrars	6	+3	+3	+3	+3	+1	+101.0%	+99.7%	+99.7%	+99.7%	+19.8%
SHO/ Interns	5	+1	+1	-0	+0	-1	+13.9%	+12.5%	-8.0%	+7.7%	-10.0%
Nurse/ Midwife Manager	24	-2	-3	-3	-0	+0	-9.1%	-11.5%	-11.9%	-1.7%	+0.3%
Nurse/ Midwife Specialist & AN/MP	4	+2	+2	+2	+1	+0	+95.5%	+95.5%	+105.8%	+33.9%	+1.3%
Staff Nurse/ Staff Midwife	74	-1	-2	-6	+1	+1	-1.8%	-2.7%	-7.0%	+1.8%	+1.6%
Therapy Professions	5	-0	+0	+0			-0.9%	+2.7%	+5.4%		
Health Science/ Diagnostics	14	-1	-1	-1	+0	+1	-4.9%	-9.4%	-7.3%	+3.1%	+8.8%
Pharmacy	2			+0					+11.1%		
Administrative/ Supervisory (V to VII)	4	-0	+1	+2	-0	+1	-1.5%	+34.9%	+97.0%	-1.5%	+31.3%
Clerical (III & IV)	40	+2	-1	-2	+1	+0	+5.5%	-2.1%	-4.8%	+2.1%	+0.8%
Support	37	+21	+22	+23	-0	+0	+132.2%	+148.7%	+163.4%	-0.8%	+1.0%
Health Care Assistants	13	-18	-17	-19	-1	-1	-58.3%	-57.5%	-60.7%	-8.3%	-6.6%
<b>Ennis</b>	<b>233</b>	<b>+7</b>	<b>+5</b>	<b>-2</b>	<b>+5</b>	<b>+4</b>	<b>+3.1%</b>	<b>+2.3%</b>	<b>-0.9%</b>	<b>+2.1%</b>	<b>+1.6%</b>
Consultants	5	-1		+1			-16.1%		+25.0%		
Registrars	4	-0	-0	-0	-0	-0	-0.2%	-0.2%	-0.2%	-0.2%	-0.2%
SHO/ Interns	10	+4	+4	+2	-1	-1	+72.7%	+58.3%	+18.8%	-5.0%	-12.8%



Mar 2021 (Dec 2017 figure: 3,974)	WTE Mar 2021	WTE change since Dec 17	WTE change since Dec 18	WTE change since Dec 19	WTE change since Dec 20	WTE change since Feb 21	% change since Dec 17	% change since Dec 18	% change since Dec 19	% change since Dec 20	% change since Feb 21
<b>Overall</b>	<b>4,689</b>	<b>+715</b>	<b>+535</b>	<b>+543</b>	<b>+183</b>	<b>+75</b>	<b>+18.0%</b>	<b>+12.9%</b>	<b>+13.1%</b>	<b>+4.1%</b>	<b>+1.6%</b>
Nurse/ Midwife Manager	29	+2	+3	+1	-1	-1	+8.0%	+13.5%	+4.0%	-4.8%	-2.0%
Nurse/ Midwife Specialist & AN/MP	5	+0	+2	+1	+1	+0	+4.0%	+62.5%	+27.2%	+27.2%	+0.2%
Staff Nurse/ Staff Midwife	84	+11	+5	+3	+3	+2	+15.4%	+6.1%	+4.2%	+3.5%	+2.9%
Therapy Professions	7	+2	-2	-1	-1	+1	+30.3%	-17.7%	-7.0%	-15.8%	+16.7%
Health Science/ Diagnostics	7	+0	+0	+1	-0		+6.9%	+0.3%	+9.5%	-4.1%	
Pharmacy	2	+0	+0	+0	+0		+10.5%	+7.5%	+19.0%	+7.5%	
Management (VIII & above)		-2					-100.0%	-100.0%	-100.0%	-100.0%	-100.0%
Administrative/ Supervisory (V to VII)	3	+0	+1	+0	+1	+1	+4.3%	+60.7%	+0.3%	+21.0%	+50.0%
Clerical (III & IV)	36	+4	+2	+5	+2	-0	+11.5%	+5.0%	+14.4%	+5.2%	-0.1%
Support	20	+10	+11	+11	+2	+2	+91.2%	+112.1%	+124.5%	+13.7%	+8.4%
Maintenance/ Technical	3	-1	-1	+0			-25.0%	-17.4%	+9.1%		
Health Care Assistants	49	-0	-7	-9	+2	-0	-0.9%	-12.2%	-14.9%	+3.2%	-0.3%
<b>Nenagh</b>	<b>266</b>	<b>+29</b>	<b>+18</b>	<b>+16</b>	<b>+7</b>	<b>+4</b>	<b>+12.3%</b>	<b>+7.4%</b>	<b>+6.4%</b>	<b>+2.5%</b>	<b>+1.5%</b>
Consultants	8	-2	-1	+0			-17.0%	-9.3%	+2.6%		
Registrars	9	+1			-1		+12.5%			-10.0%	
SHO/ Interns	8			+1	-3				+14.3%	-27.3%	
Nurse/ Midwife Manager	27	+3	-1	+3	+2	+1	+10.7%	-3.1%	+10.6%	+6.2%	+3.8%
Nurse/ Midwife Specialist & AN/MP	9	+3	+2	+1			+50.0%	+28.6%	+12.5%		
Staff Nurse/ Staff Midwife	92	-2	-2	-1	-1	+3	-2.0%	-2.0%	-1.4%	-0.6%	+3.8%
Nursing/ Midwifery other		-1	-1	-1			-100.0%	-100.0%	-100.0%	-100.0%	-100.0%
Therapy Professions	6	+0	+0	+1	+0	+0	+2.1%	+6.2%	+19.0%	+6.0%	+3.4%
Health Science/ Diagnostics	11	+0	+1	-1	+1		+4.6%	+8.5%	-5.6%	+9.9%	
Pharmacy	6	+0	+2	+2	-0		+0.2%	+49.5%	+36.0%	-0.2%	
Management (VIII & above)	6	-1	-1	-1	-1		-14.3%	-14.3%	-14.3%	-14.3%	
Administrative/ Supervisory (V to VII)	19	+3	+4	+3	-1	-1	+22.2%	+30.6%	+22.2%	-5.0%	-5.0%
Clerical (III & IV)	41	-3	-4	-4			-6.5%	-7.9%	-9.2%		
Support	39	+5	+1	-1	-2	-0	+14.6%	+3.9%	-2.4%	-5.2%	-0.5%
Maintenance/ Technical	2										
Health Care Assistants	33	+7	+2	+4	+2		+25.5%	+5.4%	+13.0%	+6.4%	
Care, other	1										
<b>St. John's Limerick</b>	<b>317</b>	<b>+14</b>	<b>+4</b>	<b>+6</b>	<b>-4</b>	<b>+3</b>	<b>+4.7%</b>	<b>+1.2%</b>	<b>+1.8%</b>	<b>-1.2%</b>	<b>+1.1%</b>
Consultants	142	+29	+22	+16	+1	+2	+26.0%	+18.0%	+13.1%	+0.6%	+1.3%
Registrars	163	+28	+22	+8	-4	-1	+20.8%	+15.4%	+4.9%	-2.3%	-0.7%
SHO/ Interns	203	+50	+64	+48	-9	+2	+32.8%	+45.7%	+30.9%	-4.4%	+1.2%



Mar 2021 (Dec 2017 figure: 3,974)	WTE Mar 2021	WTE change since Dec 17	WTE change since Dec 18	WTE change since Dec 19	WTE change since Dec 20	WTE change since Feb 21	% change since Dec 17	% change since Dec 18	% change since Dec 19	% change since Dec 20	% change since Feb 21
<b>Overall</b>	<b>4,689</b>	<b>+715</b>	<b>+535</b>	<b>+543</b>	<b>+183</b>	<b>+75</b>	<b>+18.0%</b>	<b>+12.9%</b>	<b>+13.1%</b>	<b>+4.1%</b>	<b>+1.6%</b>
Medical/ Dental, other	1	-0				+0	-3.6%				+1.2%
Nurse/ Midwife Manager	210	+27	+20	+12	+5	-1	+14.9%	+10.3%	+5.8%	+2.6%	-0.7%
Nurse/ Midwife Specialist & AN/MP	58	+19	+10	+5	+1	-0	+50.3%	+21.3%	+10.0%	+2.3%	-0.6%
Staff Nurse/ Staff Midwife	872	+154	+88	+116	+46	+30	+21.5%	+11.2%	+15.4%	+5.6%	+3.6%
Nursing/ Midwifery Student	24	+24	+24	+24	+23	+0	+3845.2%	+2617.8%	+20283.3%	+2346.0%	+0.7%
Nursing/ Midwifery other	7	+2	+2	+1	+1	+0	+33.1%	+32.9%	+15.3%	+9.5%	+6.1%
Therapy Professions	81	+21	+17	+17	+7	+3	+35.1%	+26.5%	+26.6%	+8.8%	+3.6%
Health Science/ Diagnostics	223	+10	+7	+6	+2	+0	+4.9%	+3.2%	+2.6%	+0.7%	+0.1%
Social Workers	13	+5	+6	+3	+3	+2	+55.1%	+78.3%	+26.9%	+27.0%	+14.7%
Psychologists	4	+2	+2	+1			+75.0%	+75.0%	+18.2%		
Pharmacy	41	+7	+1	+4	-0	-0	+21.3%	+3.4%	+9.9%	-1.2%	-0.5%
H&SC, Other	10	+1	-0	+2	+4	+0	+9.2%	-3.5%	+29.1%	+62.0%	+0.2%
Management (VIII & above)	20	+2	-3	-4	-2	-2	+9.8%	-10.9%	-17.2%	-8.1%	-8.2%
Administrative/ Supervisory (V to VII)	112	+40	+33	+35	+16	+11	+54.3%	+41.1%	+45.3%	+16.3%	+11.2%
Clerical (III & IV)	352	+7	+5	+35	+15	+1	+2.1%	+1.5%	+11.1%	+4.3%	+0.3%
Support	447	+249	+248	+252	+13	+2	+125.8%	+124.9%	+128.6%	+2.9%	+0.5%
Maintenance/ Technical	32	+5	+2	-0	+1	+0	+17.9%	+6.1%	-0.5%	+3.4%	+1.0%
Health Care Assistants	244	-115	-127	-130	+19	+8	-32.0%	-34.2%	-34.8%	+8.3%	+3.4%
Care, other	5	+0	-0	-0	+1	+1	+3.4%	-2.1%	-0.9%	+32.4%	+37.1%
<b>UH Limerick</b>	<b>3,263</b>	<b>+568</b>	<b>+440</b>	<b>+449</b>	<b>+140</b>	<b>+59</b>	<b>+21.1%</b>	<b>+15.6%</b>	<b>+16.0%</b>	<b>+4.5%</b>	<b>+1.8%</b>
Consultants	15	+3	-2	-1		+0	+20.0%	-9.1%	-3.2%		+0.5%
Registrars	16	+8	-0		-1	-0	+99.9%	-0.1%		-5.9%	-0.7%
SHO/ Interns	13	+5	-2	-4	+0	+1	+61.9%	-15.6%	-22.1%	+0.3%	+6.8%
Nurse/ Midwife Manager	43	+3	+1	+11	+1	-1	+6.8%	+1.6%	+32.7%	+2.8%	-1.9%
Nurse/ Midwife Specialist & AN/MP	6	+3	+2	+2	+1	+0	+113.9%	+45.0%	+42.8%	+23.4%	+0.9%
Staff Nurse/ Staff Midwife	178	+19	+18	+12	+4	-0	+12.0%	+11.3%	+7.0%	+2.3%	-0.1%
Nursing/ Midwifery Student	23	+18	+11	+4	+12	-2	+345.5%	+96.1%	+20.3%	+105.9%	-8.2%
Nursing/ Midwifery other	4	-0	-0	+1	-0	-0	-6.2%	-4.4%	+26.9%	-2.4%	-0.7%
Therapy Professions	1	-1	-1	-1	-1	-1	-48.0%	-48.0%	-54.8%	-40.6%	-42.2%
Health Science/ Diagnostics		-1	-1	-1	-1		-100.0%	-100.0%	-100.0%	-100.0%	-100.0%
Social Workers	1	+1					-100.0%				
Management (VIII & above)	1	-1	+0	+1			-49.0%	+4.2%	-100.0%		
Administrative/ Supervisory (V to VII)	3	+2	+1	+1	+1	+1	+194.0%	+77.1%	+50.0%	+53.9%	+68.0%
Clerical (III & IV)	36	+2	+0	+2	-2	-2	+4.9%	+1.2%	+5.5%	-5.0%	-5.0%
Support	43	+20	+22	+23	-3	-1	+85.8%	+100.2%	+110.6%	-6.1%	-1.6%

Mar 2021 (Dec 2017 figure: 3,974)	WTE Mar 2021	WTE change since Dec 17	WTE change since Dec 18	WTE change since Dec 19	WTE change since Dec 20	WTE change since Feb 21	% change since Dec 17	% change since Dec 18	% change since Dec 19	% change since Dec 20	% change since Feb 21
<b>Overall</b>	<b>4,689</b>	<b>+715</b>	<b>+535</b>	<b>+543</b>	<b>+183</b>	<b>+75</b>	<b>+18.0%</b>	<b>+12.9%</b>	<b>+13.1%</b>	<b>+4.1%</b>	<b>+1.6%</b>
Maintenance/ Technical		-1	-1				-100.0%	-100.0%	-100.0%	-100.0%	-100.0%
Health Care Assistants	20	-17	-18	-20	-1	+0	-46.3%	-48.0%	-49.8%	-4.9%	+0.1%
Care, other	0	+0	-1	-1			-100.0%	-51.0%	-51.0%		
<b>UMH Limerick</b>	<b>403</b>	<b>+62</b>	<b>+29</b>	<b>+29</b>	<b>+10</b>	<b>-4</b>	<b>+18.0%</b>	<b>+7.8%</b>	<b>+7.7%</b>	<b>+2.6%</b>	<b>-1.1%</b>
Nurse/ Midwife Manager	1		-1					-58.2%			
Management (VIII & above)	7	+2	+4	+3	-0	+0	+39.8%	+133.0%	+75.6%	-0.1%	+1.3%
Administrative/ Supervisory (V to VII)	3	+1	+2	+2	+1	+0	+56.3%	+219.1%	+200.0%	+50.0%	+1.0%
<b>Hospital Group HQ</b>	<b>11</b>	<b>+3</b>	<b>+5</b>	<b>+5</b>	<b>+1</b>	<b>+0</b>	<b>+38.8%</b>	<b>+73.6%</b>	<b>+83.8%</b>	<b>+9.9%</b>	<b>+1.1%</b>

Source: Health Service Personnel Census