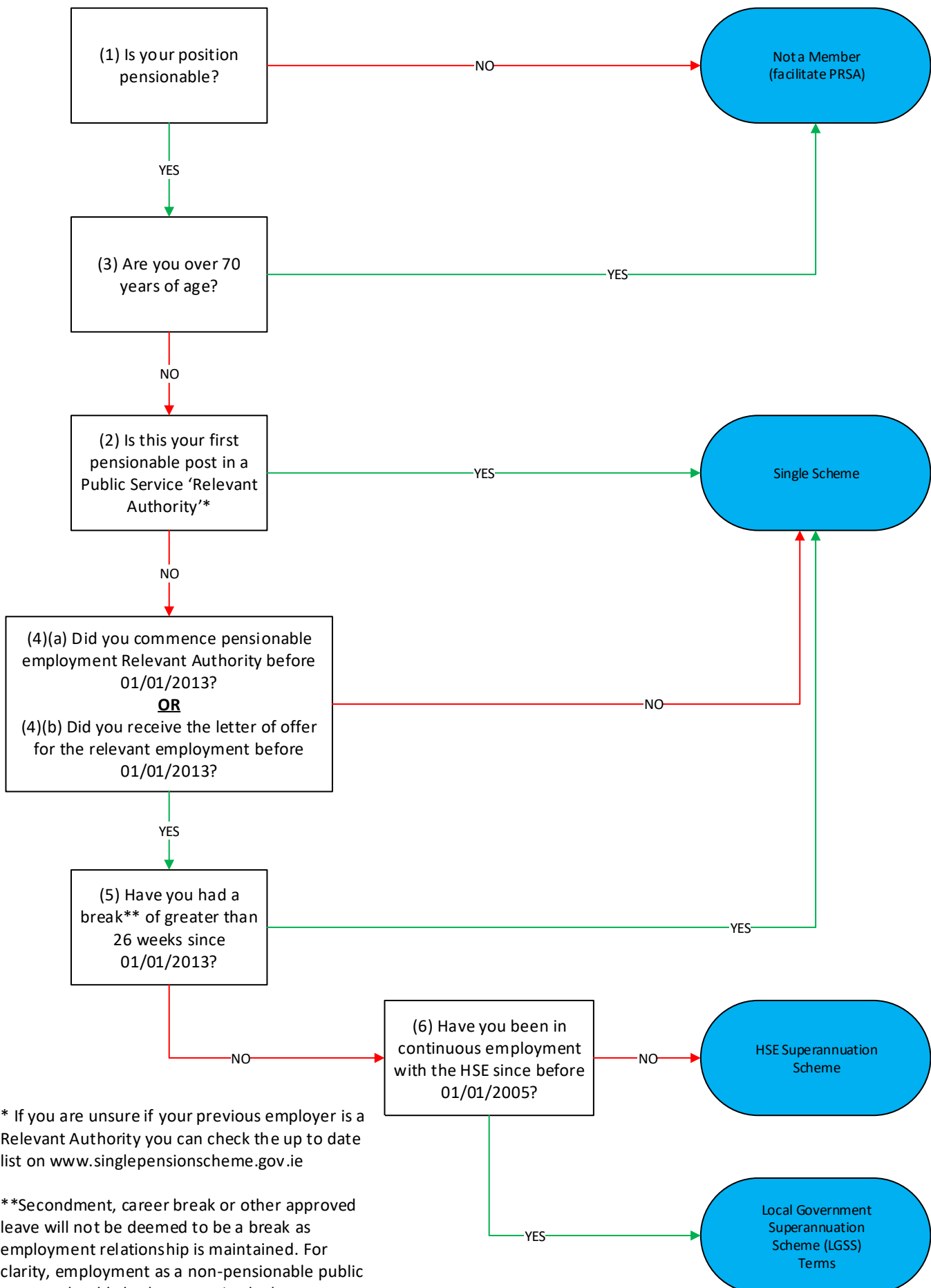


Process Map for Assigning Staff Member to Correct Scheme

WHICH PENSION SCHEME?



* If you are unsure if your previous employer is a Relevant Authority you can check the up to date list on www.singlepensionscheme.gov.ie

**Secondment, career break or other approved leave will not be deemed to be a break as employment relationship is maintained. For clarity, employment as a non-pensionable public servant should also be recognised when determining if the 26 week exemptions applies.