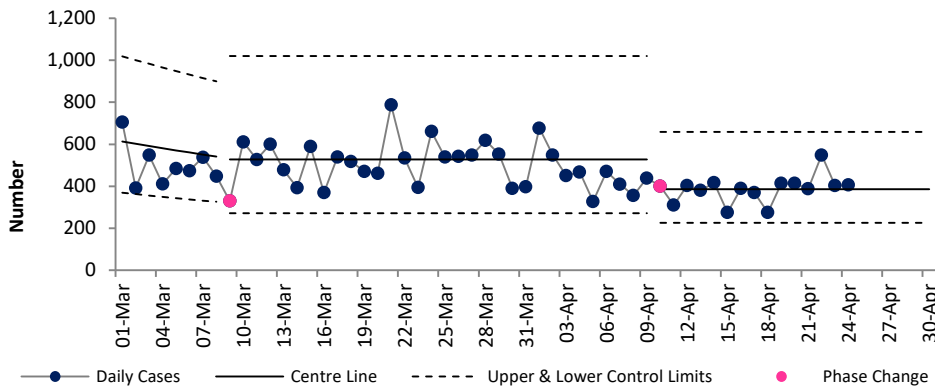


Weekly Report on COVID-19 Statistical Process Control Charts

25 April 2021

Daily COVID-19 Reported Cases

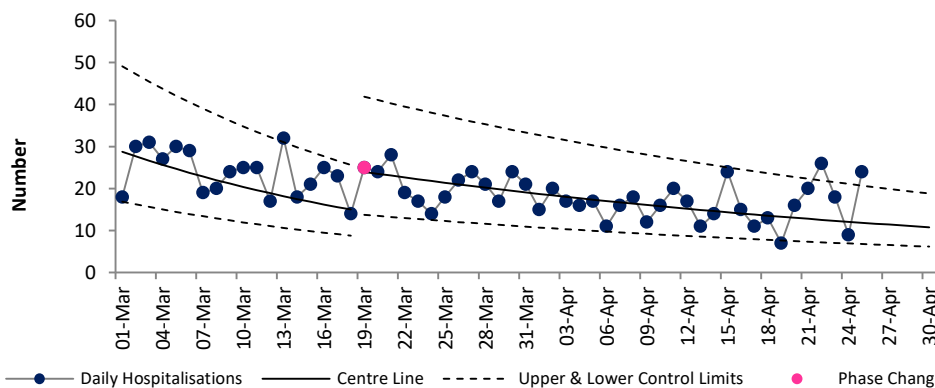


Epoch 3: Plateau or descent in daily reported cases

The number of cases trended downwards between 10th January & 8th March, but at a slower rate from 3rd February onwards. The number of cases then stabilised from 9th March onwards at an average of 529 per day.

However on 10th April there was a **signal of improvement**, and since then the number of cases remains stable but at a lower level. Based on the current data we can continue to expect to see an average of 386 new cases per day. **There is no signal of disimprovement yet.**

Daily new hospital admissions of COVID-19 positive patients

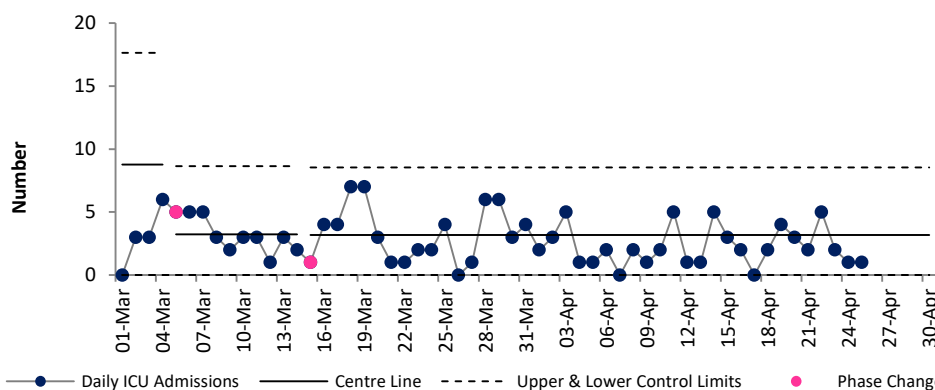


Epoch 3: Plateau or descent in daily reported hospital admissions

The number of new hospitalisations per day of COVID positive patients has been trending downwards since 12th January. Since 19th March the number continues to trend downwards but at a slower rate.

Based on the current data we can expect to continue to see a slowly decreasing trend over the next 2 weeks, from a current average of 12 new admissions per day to less than 11 admissions per day by 30th April.

Daily admissions to ICU of COVID-19 positive patients

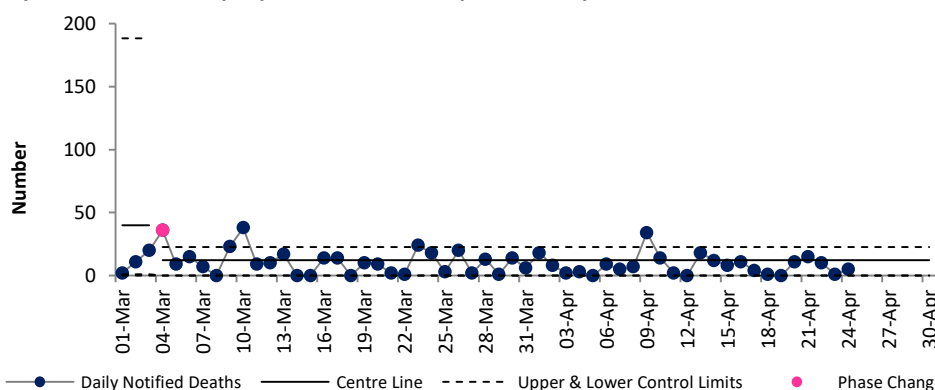


Epoch 4: Stability after descent in daily reported ICU admissions

There was a signal of a reduction in the average number of ICU admissions of COVID positive patients per day from 8.8 since 28th Jan to 3.24 since 5th March. There was a further slight decrease in the average to 3.19 ICU admissions per day from 15th March.

The number is stable since then and based on the current data we can expect to continue to see an average of 3.19 admissions per day.

Daily notified deaths of people with confirmed, probable or possible COVID-19



Epoch 3: Plateau or descent in daily reported deaths

Between 31st Jan and 3rd March there was an average of 40 deaths notified per day. There was a signal of a reduction (a series of 8 days below average), and since 4th March the average has been 12 deaths per day. The number of deaths notified per day is now stable, and while it remains stable we can expect to continue to see an average of 12 deaths notified per day.

For more information on the methodology used above and the team behind the development of this SPC approach see <https://www.hse.ie/eng/about/who/qid/covid-19-qi-learning/resources-developed-to-support-the-national-covid19-response/understanding-variation-in-key-covid-19-indicators-in-ireland-using-statistical-process-control-shewhart-charts.pdf>